



Milk Production

ISSN: 1949-1557

Released August 18, 2011, by the National Agricultural Statistics Service (NASS), Agricultural Statistics Board, United States Department of Agriculture (USDA).

July Milk Production up 0.8 Percent

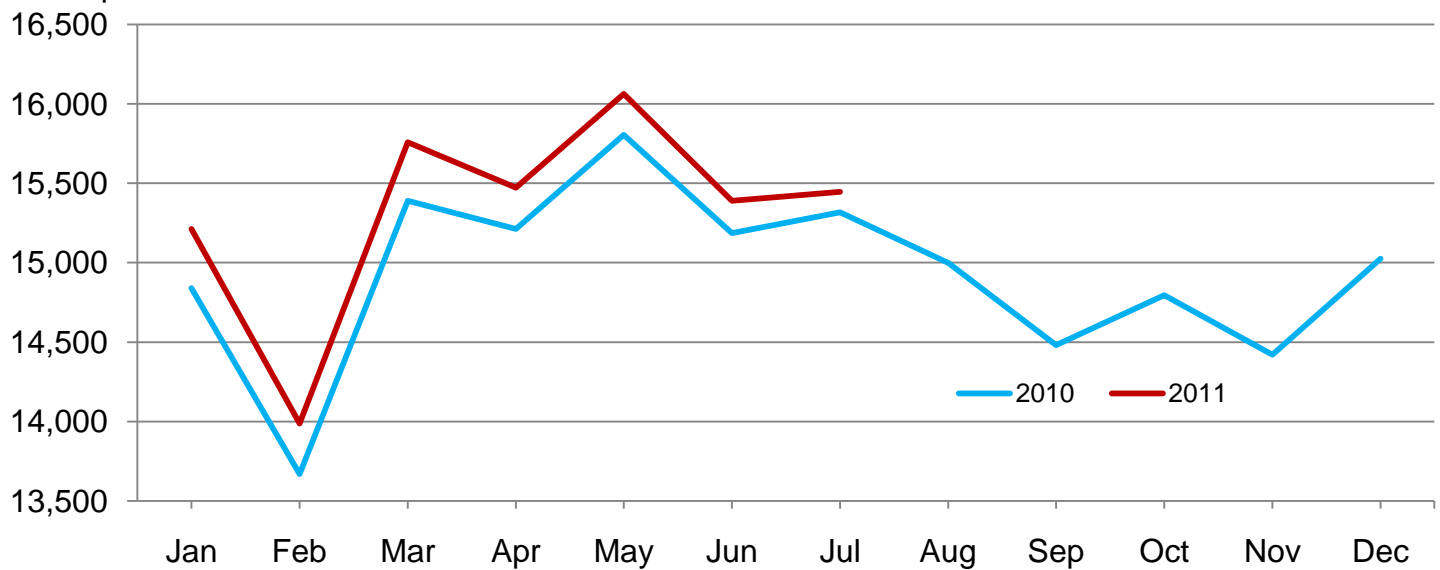
Milk production in the 23 major States during July totaled 15.4 billion pounds, up 0.8 percent from July 2010. June revised production at 15.4 billion pounds, was up 1.3 percent from June 2010. The June revision represented a decrease of 5 million pounds or less than 0.1 percent from last month's preliminary production estimate.

Production per cow in the 23 major States averaged 1,824 pounds for July, 5 pounds below July 2010.

The number of milk cows on farms in the 23 major States was 8.47 million head, 93,000 head more than July 2010, and 8,000 head more than June 2011.

Monthly Milk Production – 23 Selected States

Million pounds



Milk Cows and Production by Quarter – United States: 2010-2011

[May not add due to rounding]

| Quarter | Milk cows ¹ | | Milk per cow ² | | Milk production ² | | |
|------------------------|------------------------|--------------|---------------------------|----------|------------------------------|------------------|------------------|
| | 2010 | 2011 | 2010 | 2011 | 2010 | 2011 | Change from 2010 |
| | (1,000 head) | (1,000 head) | (pounds) | (pounds) | (million pounds) | (million pounds) | (percent) |
| January-March | 9,093 | 9,165 | 5,212 | 5,283 | 47,392 | 48,421 | 2.2 |
| April-June | 9,119 | 9,198 | 5,462 | 5,483 | 49,809 | 50,434 | 1.3 |
| July-September | 9,126 | | 5,267 | | 48,070 | | |
| October-December | 9,130 | | 5,208 | | 47,548 | | |
| Annual | 9,117 | | 21,149 | | 192,819 | | |

¹ Includes dry cows; excludes heifers not yet fresh.

² Excludes milk sucked by calves.

Milk Cows and Production by Month – 23 Selected States: 2010-2011

| Month | Milk cows ¹ | | Milk per cow ² | | Milk production ² | | |
|-----------------|------------------------|--------------|---------------------------|----------|------------------------------|------------------|------------------|
| | 2010 | 2011 | 2010 | 2011 | 2010 | 2011 | Change from 2010 |
| | (1,000 head) | (1,000 head) | (pounds) | (pounds) | (million pounds) | (million pounds) | (percent) |
| January | 8,319 | 8,404 | 1,784 | 1,810 | 14,839 | 15,213 | 2.5 |
| February | 8,323 | 8,405 | 1,642 | 1,664 | 13,670 | 13,987 | 2.3 |
| March | 8,329 | 8,426 | 1,848 | 1,870 | 15,389 | 15,757 | 2.4 |
| April | 8,337 | 8,435 | 1,825 | 1,834 | 15,213 | 15,471 | 1.7 |
| May | 8,347 | 8,451 | 1,893 | 1,901 | 15,804 | 16,063 | 1.6 |
| June | 8,356 | 8,460 | 1,817 | 1,819 | 15,186 | 15,389 | 1.3 |
| July | 8,375 | 8,468 | 1,829 | 1,824 | 15,316 | 15,445 | 0.8 |
| August | 8,369 | | 1,792 | | 14,998 | | |
| September | 8,371 | | 1,730 | | 14,481 | | |
| October | 8,372 | | 1,767 | | 14,796 | | |
| November | 8,373 | | 1,722 | | 14,421 | | |
| December | 8,387 | | 1,791 | | 15,025 | | |
| Annual | 8,355 | | 21,440 | | 179,138 | | |

¹ Includes dry cows; excludes heifers not yet fresh.

² Excludes milk sucked by calves.

Estimated Milk Cows and Production by Month – United States: 2010-2011

| Month | Milk cows ¹ | | Milk per cow ² | | Milk production ² | | |
|-----------------|------------------------|--------------|---------------------------|----------|------------------------------|------------------|------------------|
| | 2010 | 2011 | 2010 | 2011 | 2010 | 2011 | Change from 2010 |
| | (1,000 head) | (1,000 head) | (pounds) | (pounds) | (million pounds) | (million pounds) | (percent) |
| January | 9,089 | 9,158 | 1,763 | 1,789 | 16,020 | 16,385 | 2.3 |
| February | 9,092 | 9,158 | 1,623 | 1,645 | 14,758 | 15,065 | 2.1 |
| March | 9,099 | 9,178 | 1,826 | 1,849 | 16,614 | 16,971 | 2.1 |
| April | 9,108 | 9,185 | 1,802 | 1,812 | 16,416 | 16,645 | 1.4 |
| May | 9,119 | 9,200 | 1,869 | 1,877 | 17,040 | 17,266 | 1.3 |
| June | 9,129 | 9,208 | 1,791 | 1,794 | 16,353 | 16,523 | 1.0 |
| July | 9,135 | 9,215 | 1,799 | 1,796 | 16,436 | 16,553 | 0.7 |
| August | 9,123 | | 1,764 | | 16,094 | | |
| September | 9,121 | | 1,704 | | 15,540 | | |
| October | 9,123 | | 1,743 | | 15,900 | | |
| November | 9,125 | | 1,698 | | 15,498 | | |
| December | 9,141 | | 1,767 | | 16,150 | | |
| Annual | 9,117 | | 21,149 | | 192,819 | | |

¹ Includes dry cows; excludes heifers not yet fresh.

² Excludes milk sucked by calves.

Milk Cows and Production – 23 Selected States: July 2010 and 2011

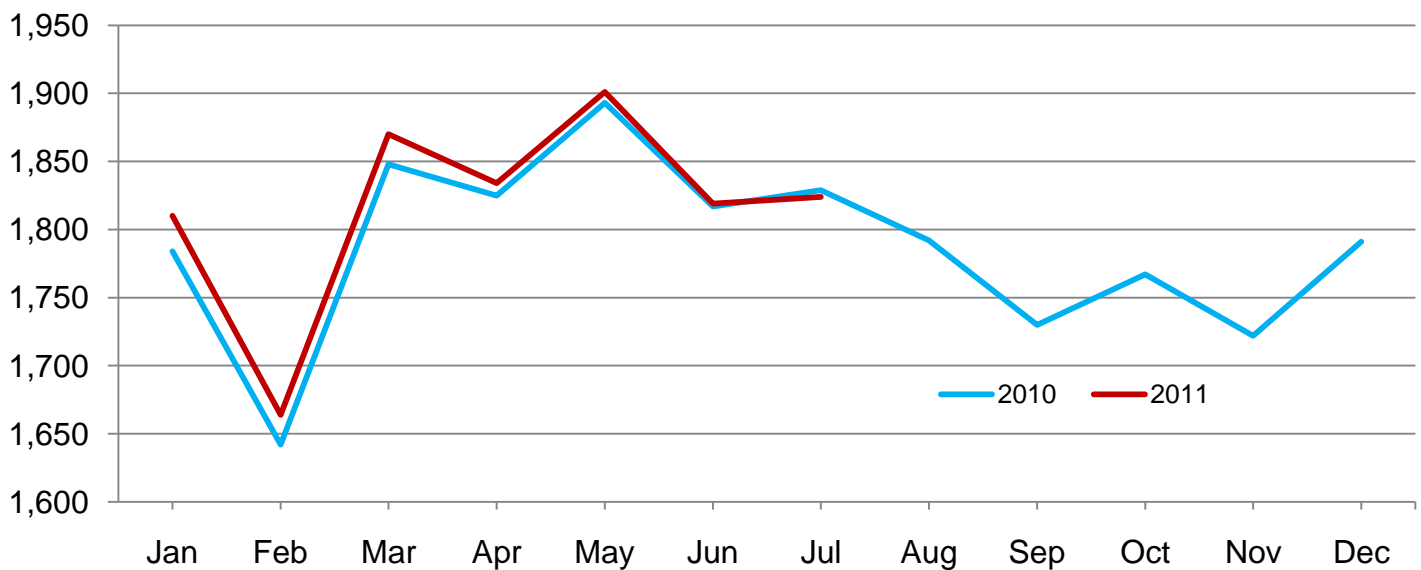
| State | Milk cows ¹ | | Milk per cow ² | | Milk production ² | | Change from 2010 |
|----------------------|------------------------|--------------|---------------------------|----------|------------------------------|------------------|------------------|
| | 2010 | 2011 | 2010 | 2011 | 2010 | 2011 | |
| | (1,000 head) | (1,000 head) | (pounds) | (pounds) | (million pounds) | (million pounds) | (percent) |
| Arizona | 179 | 186 | 1,870 | 1,885 | 335 | 351 | 4.8 |
| California | 1,753 | 1,775 | 1,940 | 2,000 | 3,401 | 3,550 | 4.4 |
| Colorado | 119 | 128 | 2,050 | 2,015 | 244 | 258 | 5.7 |
| Florida | 115 | 120 | 1,530 | 1,580 | 176 | 190 | 8.0 |
| Idaho | 569 | 582 | 2,000 | 2,050 | 1,138 | 1,193 | 4.8 |
| Illinois | 101 | 98 | 1,575 | 1,540 | 159 | 151 | -5.0 |
| Indiana | 169 | 170 | 1,730 | 1,695 | 292 | 288 | -1.4 |
| Iowa | 209 | 200 | 1,760 | 1,710 | 368 | 342 | -7.1 |
| Kansas | 120 | 124 | 1,760 | 1,765 | 211 | 219 | 3.8 |
| Michigan | 359 | 367 | 2,020 | 1,945 | 725 | 714 | -1.5 |
| Minnesota | 470 | 471 | 1,675 | 1,560 | 787 | 735 | -6.6 |
| Missouri | 100 | 96 | 1,190 | 1,140 | 119 | 109 | -8.4 |
| New Mexico | 324 | 330 | 2,095 | 2,105 | 679 | 695 | 2.4 |
| New York | 611 | 610 | 1,790 | 1,790 | 1,094 | 1,092 | -0.2 |
| Ohio | 270 | 266 | 1,640 | 1,560 | 443 | 415 | -6.3 |
| Oregon | 120 | 123 | 1,730 | 1,770 | 208 | 218 | 4.8 |
| Pennsylvania | 541 | 540 | 1,680 | 1,630 | 909 | 880 | -3.2 |
| Texas | 415 | 435 | 1,775 | 1,835 | 737 | 798 | 8.3 |
| Utah | 85 | 88 | 1,860 | 1,840 | 158 | 162 | 2.5 |
| Vermont | 136 | 134 | 1,550 | 1,600 | 211 | 214 | 1.4 |
| Virginia | 95 | 96 | 1,505 | 1,440 | 143 | 138 | -3.5 |
| Washington | 252 | 265 | 2,030 | 2,060 | 512 | 546 | 6.6 |
| Wisconsin | 1,263 | 1,264 | 1,795 | 1,730 | 2,267 | 2,187 | -3.5 |
| 23-State Total | 8,375 | 8,468 | 1,829 | 1,824 | 15,316 | 15,445 | 0.8 |

¹ Includes dry cows; excludes heifers not yet fresh.

² Excludes milk sucked by calves.

Monthly Milk per Cow – 23 Selected States

Pounds



Milk Cows and Production – 23 Selected States: June 2010 and 2011

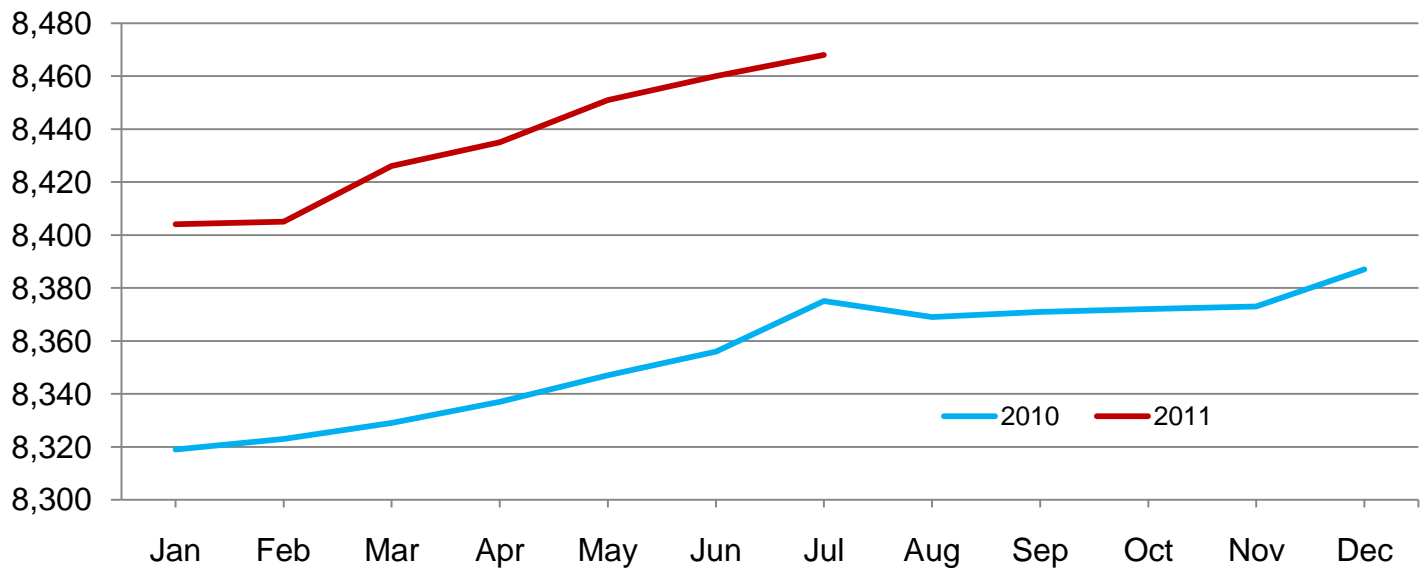
| State | Milk cows ¹ | | Milk per cow ² | | Milk production ² | | Change from 2010 |
|----------------------|------------------------|--------------|---------------------------|----------|------------------------------|------------------|------------------|
| | 2010 | 2011 | 2010 | 2011 | 2010 | 2011 | |
| | (1,000 head) | (1,000 head) | (pounds) | (pounds) | (million pounds) | (million pounds) | (percent) |
| Arizona | 176 | 186 | 2,025 | 1,980 | 356 | 368 | 3.4 |
| California | 1,754 | 1,774 | 1,935 | 1,980 | 3,394 | 3,513 | 3.5 |
| Colorado | 118 | 127 | 2,010 | 1,990 | 237 | 253 | 6.8 |
| Florida | 115 | 119 | 1,600 | 1,630 | 184 | 194 | 5.4 |
| Idaho | 562 | 578 | 1,910 | 1,960 | 1,073 | 1,133 | 5.6 |
| Illinois | 101 | 98 | 1,615 | 1,600 | 163 | 157 | -3.7 |
| Indiana | 169 | 170 | 1,735 | 1,710 | 293 | 291 | -0.7 |
| Iowa | 212 | 204 | 1,760 | 1,775 | 373 | 362 | -2.9 |
| Kansas | 118 | 123 | 1,755 | 1,765 | 207 | 217 | 4.8 |
| Michigan | 359 | 367 | 2,000 | 1,960 | 718 | 719 | 0.1 |
| Minnesota | 470 | 471 | 1,670 | 1,600 | 785 | 754 | -3.9 |
| Missouri | 100 | 96 | 1,230 | 1,210 | 123 | 116 | -5.7 |
| New Mexico | 325 | 328 | 2,080 | 2,100 | 676 | 689 | 1.9 |
| New York | 610 | 610 | 1,770 | 1,770 | 1,080 | 1,080 | |
| Ohio | 270 | 266 | 1,660 | 1,575 | 448 | 419 | -6.5 |
| Oregon | 118 | 122 | 1,695 | 1,730 | 200 | 211 | 5.5 |
| Pennsylvania | 541 | 542 | 1,660 | 1,620 | 898 | 878 | -2.2 |
| Texas | 410 | 434 | 1,775 | 1,850 | 728 | 803 | 10.3 |
| Utah | 85 | 88 | 1,810 | 1,770 | 154 | 156 | 1.3 |
| Vermont | 136 | 134 | 1,565 | 1,580 | 213 | 212 | -0.5 |
| Virginia | 95 | 96 | 1,515 | 1,450 | 144 | 139 | -3.5 |
| Washington | 250 | 262 | 1,970 | 2,000 | 493 | 524 | 6.3 |
| Wisconsin | 1,262 | 1,265 | 1,780 | 1,740 | 2,246 | 2,201 | -2.0 |
| 23-State Total | 8,356 | 8,460 | 1,817 | 1,819 | 15,186 | 15,389 | 1.3 |

¹ Includes dry cows; excludes heifers not yet fresh.

² Excludes milk sucked by calves.

Monthly Milk Cows – 23 Selected States

Thousand head



Statistical Methodology

Survey Procedures: Primary data used to determine these estimates were obtained from a sample of producers. Individual States maintain a list of all known milk producers and information on the size of their herd. States use all known sources of producers to ensure that their lists are as complete as possible. Generally, all large producers and a sample of small producers are included in the survey. Questionnaires are mailed to producers near the end of the month to obtain data for the first day of the month. Additional reports are obtained by telephone, as needed, to supplement the mail response. Where feasible, States utilize state and federal administrative data, rather than conduct a monthly survey, to estimate milk production. This eliminates duplication of data gathering by different government agencies. Indications of milk cow inventory are also obtained in the January and July Cattle Surveys.

Estimation Procedures: State offices prepare these estimates by using a combination of survey indications, historic trends, and any available administrative data. Individual State estimates are reviewed by the Agricultural Statistics Board for reasonableness.

Revision Policy: Milk production, rate per cow, and number of cows are subject to revision the following month for monthly States or the following quarter for the quarterly States. Normally, Federal Market Order sales are the main basis for revisions. However, data for all orders are not available in time for this revision. Estimates are again subject to revisions in February each year based on additional administrative data. In the event that additional changes are necessary, a third revision is possible in February the following year. Estimates are again reviewed after data from the five-year Census of Agriculture are available. No revisions are made after that date.

Reliability: Since all operations with dairy animals are not included in the sample, survey estimates are subject to sampling variability. Survey results are also subject to non-sampling errors such as omissions, duplications, and mistakes in reporting, recording, and processing the data. The effects of these errors cannot be measured directly. They are minimized through rigid quality controls in the data collection process and through a careful review of all reported data for consistency and reasonableness.

To assist users in evaluating the reliability of the estimates in this report, the "Root Mean Square Error" is shown for selected items on the next page. The "Root Mean Square Error" is a statistical measure based on past performance and is computed using the differences between first and final estimates. The "Root Mean Square Error" for the 23 State milk cow inventory estimates over the past 24 months is 0.1 percent. This means that chances are 2 out of 3 that the final estimate will not be above or below the current estimate of 8.47 million head by more than 0.1 percent. Chances are 9 out of 10 that the difference will not exceed 0.1 percent.

Reliability of Monthly Milk Production Estimates

[Based on data for the past 24 months]

| Item | Root mean square error | 90 percent confidence level | Difference between first and latest estimate | | | | |
|-----------------------|------------------------|-----------------------------|--|----------|---------|--------------|--------------|
| | | | Average | Smallest | Largest | Months | |
| | | | | | | Below latest | Above latest |
| | (percent) | (percent) | (1,000) | (1,000) | (1,000) | (number) | (number) |
| Milk production | 0.1 | 0.3 | 18 | 0 | 63 | 16 | 7 |
| All milk cows | 0.1 | 0.1 | 4 | 0 | 15 | 18 | 4 |

Information Contacts

Listed below are the commodity specialists in the Livestock Branch of the National Agricultural Statistics Service to contact for additional information. E-mail inquiries may be sent to nass@nass.usda.gov

| | |
|---|----------------|
| Dan Kerestes, Chief, Livestock Branch | (202) 720-3570 |
| Scott Hollis, Head, Livestock Section | (202) 690-2424 |
| Travis Averill – Dairy Products Prices | (202) 690-2168 |
| Sherry Bertramsen – Livestock Slaughter | (515) 284-4340 |
| Doug Bounds – Hogs and Pigs | (202) 720-3106 |
| Jason Hardegree – Cattle, Cattle on Feed | (202) 720-3040 |
| Mike Miller – Milk Production and Milk Cows | (202) 720-3278 |
| Everett Olbert – Sheep and Goats | (202) 720-4751 |
| Lorie Warren – Dairy Products | (202) 690-3236 |

Access to NASS Reports

For your convenience, you may access NASS reports and products the following ways:

- All reports are available electronically, at no cost, on the NASS web site: <http://www.nass.usda.gov>
- Both national and state specific reports are available via a free e-mail subscription. To set-up this free subscription, visit <http://www.nass.usda.gov> and in the “Receive NASS Updates” box under “Receive reports by Email,” click on “National” or “State” to select the reports you would like to receive.
- Printed reports may be purchased from the National Technical Information Service (NTIS) by calling toll-free (800) 999-6779, or (703) 605-6220 if calling from outside the United States or Canada. Accepted methods of payment are Visa, MasterCard, check, or money order.

For more information on NASS surveys and reports, call the NASS Agricultural Statistics Hotline at (800) 727-9540, 7:30 a.m. to 4:00 p.m. ET, or e-mail: nass@nass.usda.gov.

The United States Department of Agriculture (USDA) prohibits discrimination in all its programs and activities on the basis of race, color, national origin, age, disability, and where applicable, sex, marital status, familial status, parental status, religion, sexual orientation, political beliefs, genetic information, reprisal, or because all or a part of an individual's income is derived from any public assistance program. (Not all prohibited bases apply to all programs.) Persons with disabilities who require alternative means for communication of program information (Braille, large print, audiotape, etc.) should contact USDA's TARGET Center at (202) 720-2600 (voice and TDD).

To file a complaint of discrimination, write to USDA, Assistant Secretary for Civil Rights, Office of the Assistant Secretary for Civil Rights, 1400 Independence Avenue, S.W., Stop 9410, Washington, DC 20250-9410, or call toll-free at (866) 632-9992 (English) or (800) 877-8339 (TDD) or (866) 377-8642 (English Federal-relay) or (800) 845-6136 (Spanish Federal-relay). USDA is an equal opportunity provider and employer.