



Milk Production

ISSN: 1949-1557

Released December 19, 2011, by the National Agricultural Statistics Service (NASS), Agricultural Statistics Board, United States Department of Agriculture (USDA).

November Milk Production up 2.2 Percent

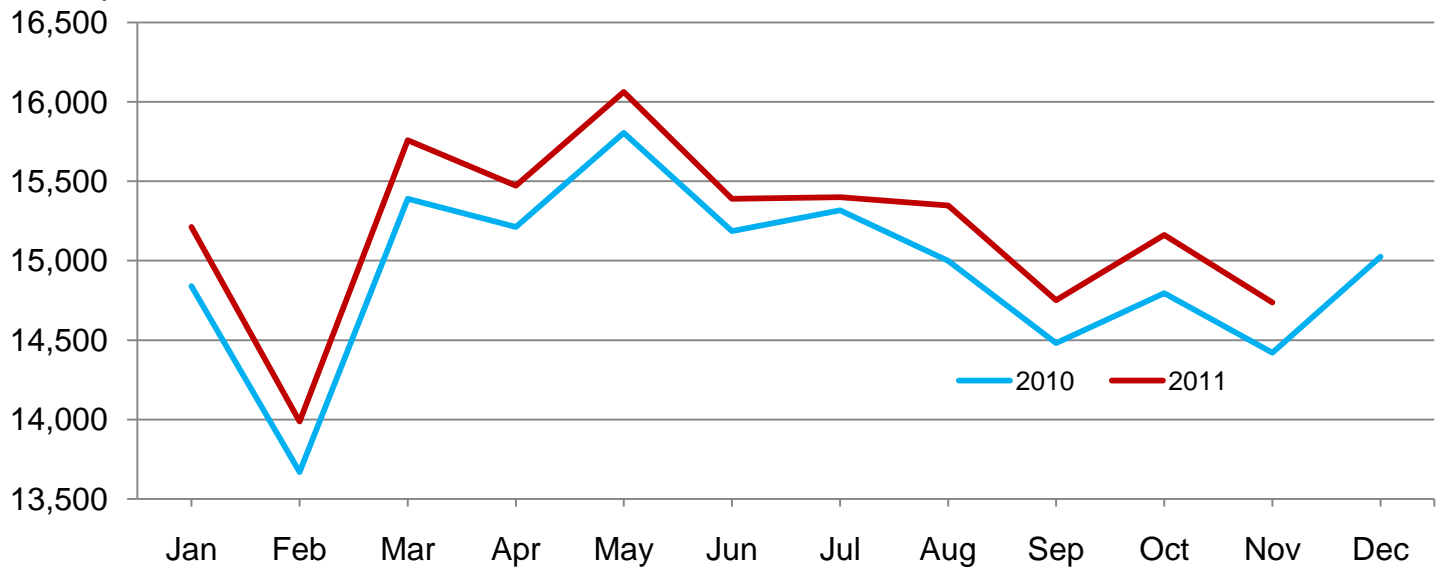
Milk production in the 23 major States during November totaled 14.7 billion pounds, up 2.2 percent from November 2010. October revised production at 15.2 billion pounds, was up 2.5 percent from October 2010. The October revision represented an increase of 1 million pounds or less than 0.1 percent from last month's preliminary production estimate.

Production per cow in the 23 major States averaged 1,738 pounds for November, 16 pounds above November 2010.

The number of milk cows on farms in the 23 major States was 8.48 million head, 108,000 head more than November 2010, but unchanged from October 2011.

Monthly Milk Production – 23 Selected States

Million pounds



Milk Cows and Production by Quarter – United States: 2010-2011

[May not add due to rounding]

Quarter	Milk cows ¹		Milk per cow ²		Milk production ²		
	2010	2011	2010	2011	2010	2011	Change from 2010
	(1,000 head)	(1,000 head)	(pounds)	(pounds)	(million pounds)	(million pounds)	(percent)
January-March	9,093	9,165	5,212	5,283	47,392	48,421	2.2
April-June	9,119	9,198	5,462	5,483	49,809	50,432	1.3
July-September	9,126	9,209	5,267	5,290	48,070	48,715	1.3
October-December	9,130		5,208		47,548		
Annual	9,117		21,149		192,819		

¹ Includes dry cows; excludes heifers not yet fresh.

² Excludes milk sucked by calves.

Milk Cows and Production by Month – 23 Selected States: 2010-2011

Month	Milk cows ¹		Milk per cow ²		Milk production ²		
	2010	2011	2010	2011	2010	2011	Change from 2010
	(1,000 head)	(1,000 head)	(pounds)	(pounds)	(million pounds)	(million pounds)	(percent)
January	8,319	8,404	1,784	1,810	14,839	15,213	2.5
February	8,323	8,405	1,642	1,664	13,670	13,987	2.3
March	8,329	8,426	1,848	1,870	15,389	15,757	2.4
April	8,337	8,435	1,825	1,834	15,213	15,471	1.7
May	8,347	8,451	1,893	1,901	15,804	16,063	1.6
June	8,356	8,460	1,817	1,819	15,186	15,389	1.3
July	8,375	8,468	1,829	1,819	15,316	15,400	0.5
August	8,369	8,471	1,792	1,812	14,998	15,347	2.3
September	8,371	8,473	1,730	1,741	14,481	14,750	1.9
October	8,372	8,481	1,767	1,788	14,796	15,162	2.5
November	8,373	8,481	1,722	1,738	14,421	14,736	2.2
December	8,387		1,791		15,025		
Annual	8,355		21,440		179,138		

¹ Includes dry cows; excludes heifers not yet fresh.

² Excludes milk sucked by calves.

Estimated Milk Cows and Production by Month – United States: 2010-2011

Month	Milk cows ¹		Milk per cow ²		Milk production ²		
	2010	2011	2010	2011	2010	2011	Change from 2010
	(1,000 head)	(1,000 head)	(pounds)	(pounds)	(million pounds)	(million pounds)	(percent)
January	9,089	9,158	1,763	1,789	16,020	16,385	2.3
February	9,092	9,158	1,623	1,645	14,758	15,065	2.1
March	9,099	9,178	1,826	1,849	16,614	16,971	2.1
April	9,108	9,185	1,802	1,812	16,416	16,643	1.4
May	9,119	9,200	1,869	1,877	17,040	17,266	1.3
June	9,129	9,208	1,791	1,794	16,353	16,523	1.0
July	9,135	9,208	1,799	1,791	16,436	16,490	0.3
August	9,123	9,209	1,764	1,784	16,094	16,432	2.1
September	9,121	9,210	1,704	1,715	15,540	15,793	1.6
October	9,123	9,217	1,743	1,761	15,900	16,231	2.1
November	9,125	9,216	1,698	1,712	15,498	15,775	1.8
December	9,141		1,767		16,150		
Annual	9,117		21,149		192,819		

¹ Includes dry cows; excludes heifers not yet fresh.

² Excludes milk sucked by calves.

Milk Cows and Production – 23 Selected States: November 2010 and 2011

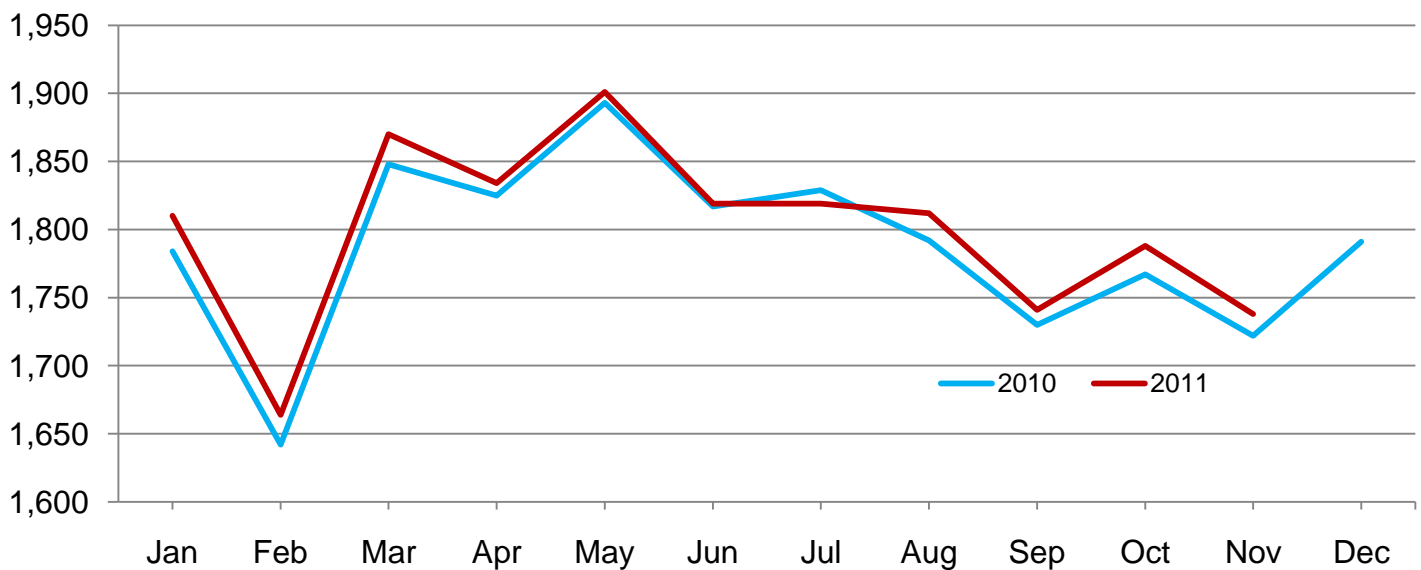
State	Milk cows ¹		Milk per cow ²		Milk production ²		Change from 2010
	2010	2011	2010	2011	2010	2011	
	(1,000 head)	(1,000 head)	(pounds)	(pounds)	(million pounds)	(million pounds)	(percent)
Arizona	183	192	1,835	1,855	336	356	6.0
California	1,751	1,778	1,865	1,880	3,266	3,343	2.4
Colorado	122	131	1,920	1,870	234	245	4.7
Florida	114	120	1,465	1,480	167	178	6.6
Idaho	572	579	1,830	1,840	1,047	1,065	1.7
Illinois	98	98	1,550	1,580	152	155	2.0
Indiana	170	172	1,650	1,680	281	289	2.8
Iowa	204	200	1,700	1,765	347	353	1.7
Kansas	121	124	1,730	1,735	209	215	2.9
Michigan	360	369	1,840	1,865	662	688	3.9
Minnesota	470	471	1,525	1,520	717	716	-0.1
Missouri	96	94	1,180	1,190	113	112	-0.9
New Mexico	319	333	1,985	2,020	633	673	6.3
New York	611	610	1,680	1,660	1,026	1,013	-1.3
Ohio	270	269	1,560	1,560	421	420	-0.2
Oregon	121	122	1,610	1,615	195	197	1.0
Pennsylvania	542	538	1,600	1,580	867	850	-2.0
Texas	415	435	1,750	1,810	726	787	8.4
Utah	85	88	1,720	1,740	146	153	4.8
Vermont	136	134	1,485	1,510	202	202	
Virginia	95	96	1,465	1,435	139	138	-0.7
Washington	253	263	1,870	1,880	473	494	4.4
Wisconsin	1,265	1,265	1,630	1,655	2,062	2,094	1.6
23-State Total	8,373	8,481	1,722	1,738	14,421	14,736	2.2

¹ Includes dry cows; excludes heifers not yet fresh.

² Excludes milk sucked by calves.

Monthly Milk per Cow – 23 Selected States

Pounds



Milk Cows and Production – 23 Selected States: October 2010 and 2011

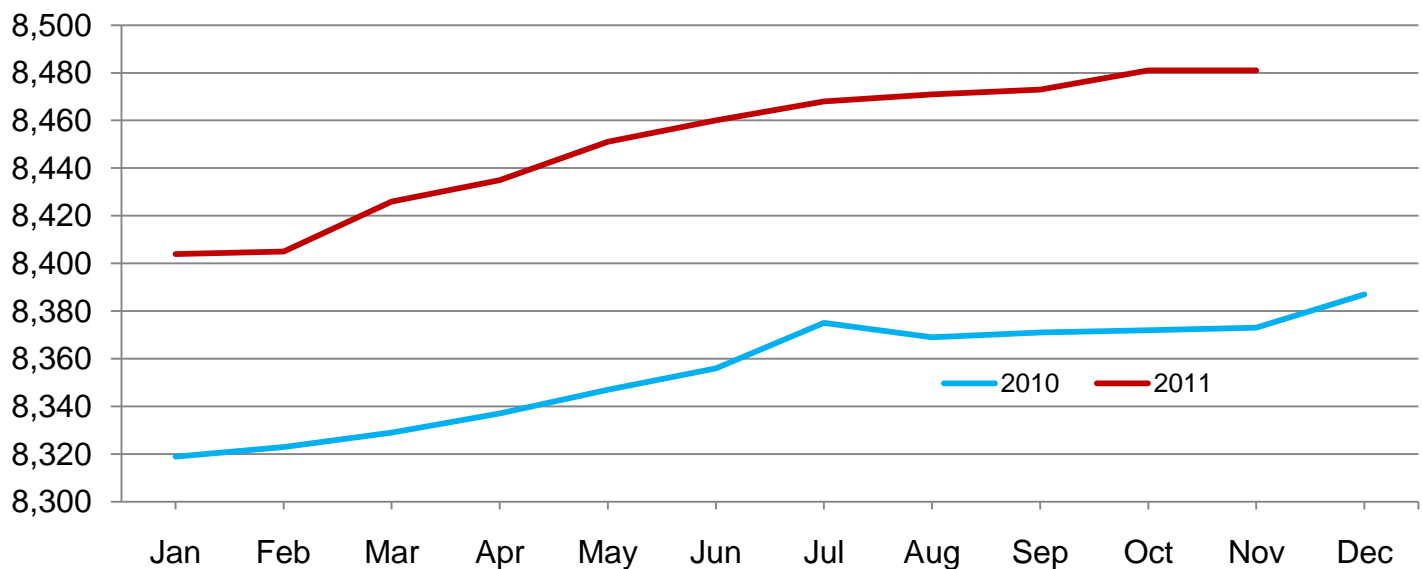
State	Milk cows ¹		Milk per cow ²		Milk production ²		Change from 2010
	2010	2011	2010	2011	2010	2011	
	(1,000 head)	(1,000 head)	(pounds)	(pounds)	(million pounds)	(million pounds)	(percent)
Arizona	183	192	1,825	1,865	334	358	7.2
California	1,752	1,778	1,910	1,925	3,346	3,423	2.3
Colorado	122	131	1,975	1,955	241	256	6.2
Florida	114	120	1,335	1,350	152	162	6.6
Idaho	572	581	1,930	1,930	1,104	1,121	1.5
Illinois	98	98	1,560	1,600	153	157	2.6
Indiana	169	171	1,670	1,710	282	292	3.5
Iowa	204	199	1,725	1,805	352	359	2.0
Kansas	121	124	1,750	1,775	212	220	3.8
Michigan	360	369	1,915	1,925	689	710	3.0
Minnesota	470	471	1,560	1,540	733	725	-1.1
Missouri	97	95	1,180	1,180	114	112	-1.8
New Mexico	318	332	2,055	2,100	653	697	6.7
New York	611	610	1,725	1,725	1,054	1,052	-0.2
Ohio	270	268	1,600	1,600	432	429	-0.7
Oregon	121	122	1,690	1,705	204	208	2.0
Pennsylvania	541	538	1,640	1,620	887	872	-1.7
Texas	415	435	1,775	1,870	737	813	10.3
Utah	85	87	1,790	1,800	152	157	3.3
Vermont	136	134	1,520	1,560	207	209	1.0
Virginia	95	96	1,465	1,450	139	139	0.0
Washington	254	266	1,950	1,965	495	523	5.7
Wisconsin	1,264	1,264	1,680	1,715	2,124	2,168	2.1
23-State Total	8,372	8,481	1,767	1,788	14,796	15,162	2.5

¹ Includes dry cows; excludes heifers not yet fresh.

² Excludes milk sucked by calves.

Monthly Milk Cows – 23 Selected States

Thousand head



Statistical Methodology

Survey Procedures: Primary data used to determine these estimates were obtained from a sample of producers. Individual States maintain a list of all known milk producers and information on the size of their herd. States use all known sources of producers to ensure that their lists are as complete as possible. Generally, all large producers and a sample of small producers are included in the survey. Questionnaires are mailed to producers near the end of the month to obtain data for the first day of the month. Additional reports are obtained by telephone, as needed, to supplement the mail response. Where feasible, States utilize state and federal administrative data, rather than conduct a monthly survey, to estimate milk production. This eliminates duplication of data gathering by different government agencies. Indications of milk cow inventory are also obtained in the January and July Cattle Surveys.

Estimation Procedures: State offices prepare these estimates by using a combination of survey indications, historic trends, and any available administrative data. Individual State estimates are reviewed by the Agricultural Statistics Board for reasonableness.

Revision Policy: Milk production, rate per cow, and number of cows are subject to revision the following month for monthly States or the following quarter for the quarterly States. Normally, Federal Market Order sales are the main basis for revisions. However, data for all orders are not available in time for this revision. Estimates are again subject to revisions in February each year based on additional administrative data. In the event that additional changes are necessary, a third revision is possible in February the following year. Estimates are again reviewed after data from the five-year Census of Agriculture are available. No revisions are made after that date.

Reliability: Since all operations with dairy animals are not included in the sample, survey estimates are subject to sampling variability. Survey results are also subject to non-sampling errors such as omissions, duplications, and mistakes in reporting, recording, and processing the data. The effects of these errors cannot be measured directly. They are minimized through rigid quality controls in the data collection process and through a careful review of all reported data for consistency and reasonableness.

To assist users in evaluating the reliability of the estimates in this report, the "Root Mean Square Error" is shown for selected items on the next page. The "Root Mean Square Error" is a statistical measure based on past performance and is computed using the differences between first and final estimates. The "Root Mean Square Error" for the 23 State milk cow inventory estimates over the past 24 months is 0.1 percent. This means that chances are 2 out of 3 that the final estimate will not be above or below the current estimate of 8.48 million head by more than 0.1 percent. Chances are 9 out of 10 that the difference will not exceed 0.1 percent.

Reliability of Monthly Milk Production Estimates

[Based on data for the past 24 months]

Item	Root mean square error	90 percent confidence level	Difference between first and latest estimate				
			Average	Smallest	Largest	Months	
						Below latest	Above latest
	(percent)	(percent)	(1,000)	(1,000)	(1,000)	(number)	(number)
Milk production	0.2	0.3	20	0	63	15	8
All milk cows	0.1	0.1	4	0	15	19	3

Information Contacts

Listed below are the commodity specialists in the Livestock Branch of the National Agricultural Statistics Service to contact for additional information. E-mail inquiries may be sent to nass@nass.usda.gov

Dan Kerestes, Chief, Livestock Branch	(202) 720-3570
Scott Hollis, Head, Livestock Section	(202) 690-2424
Travis Averill – Cattle, Cattle on Feed	(202) 720-3040
Sherry Bertramsen – Livestock Slaughter	(515) 284-4340
Doug Bounds – Hogs and Pigs, Goats	(202) 720-3106
Mike Miller – Milk Production and Milk Cows	(202) 720-3278
Everett Olbert – Dairy Products Prices	(202) 720-4751
Lorie Warren – Dairy Products, Sheep	(202) 690-3236

Access to NASS Reports

For your convenience, you may access NASS reports and products the following ways:

- All reports are available electronically, at no cost, on the NASS web site: <http://www.nass.usda.gov>
- Both national and state specific reports are available via a free e-mail subscription. To set-up this free subscription, visit <http://www.nass.usda.gov> and in the “Receive NASS Updates” box under “Receive reports by Email,” click on “National” or “State” to select the reports you would like to receive.
- Printed reports may be purchased from the National Technical Information Service (NTIS) by calling toll-free (800) 999-6779, or (703) 605-6220 if calling from outside the United States or Canada. Accepted methods of payment are Visa, MasterCard, check, or money order.

For more information on NASS surveys and reports, call the NASS Agricultural Statistics Hotline at (800) 727-9540, 7:30 a.m. to 4:00 p.m. ET, or e-mail: nass@nass.usda.gov.

The United States Department of Agriculture (USDA) prohibits discrimination in all its programs and activities on the basis of race, color, national origin, age, disability, and where applicable, sex, marital status, familial status, parental status, religion, sexual orientation, political beliefs, genetic information, reprisal, or because all or a part of an individual's income is derived from any public assistance program. (Not all prohibited bases apply to all programs.) Persons with disabilities who require alternative means for communication of program information (Braille, large print, audiotape, etc.) should contact USDA's TARGET Center at (202) 720-2600 (voice and TDD).

To file a complaint of discrimination, write to USDA, Assistant Secretary for Civil Rights, Office of the Assistant Secretary for Civil Rights, 1400 Independence Avenue, S.W., Stop 9410, Washington, DC 20250-9410, or call toll-free at (866) 632-9992 (English) or (800) 877-8339 (TDD) or (866) 377-8642 (English Federal-relay) or (800) 845-6136 (Spanish Federal-relay). USDA is an equal opportunity provider and employer.