



Milk Production

ISSN: 1949-1557

Released January 23, 2012, by the National Agricultural Statistics Service (NASS), Agricultural Statistics Board, United States Department of Agriculture (USDA).

December Milk Production up 2.7 Percent

Milk production in the 23 major States during December totaled 15.4 billion pounds, up 2.7 percent from December 2010. November revised production at 14.7 billion pounds, was up 2.2 percent from November 2010. The November revision represented an increase of 3 million pounds or less than 0.1 percent from last month's preliminary production estimate.

Production per cow in the 23 major States averaged 1,818 pounds for December, 27 pounds above December 2010.

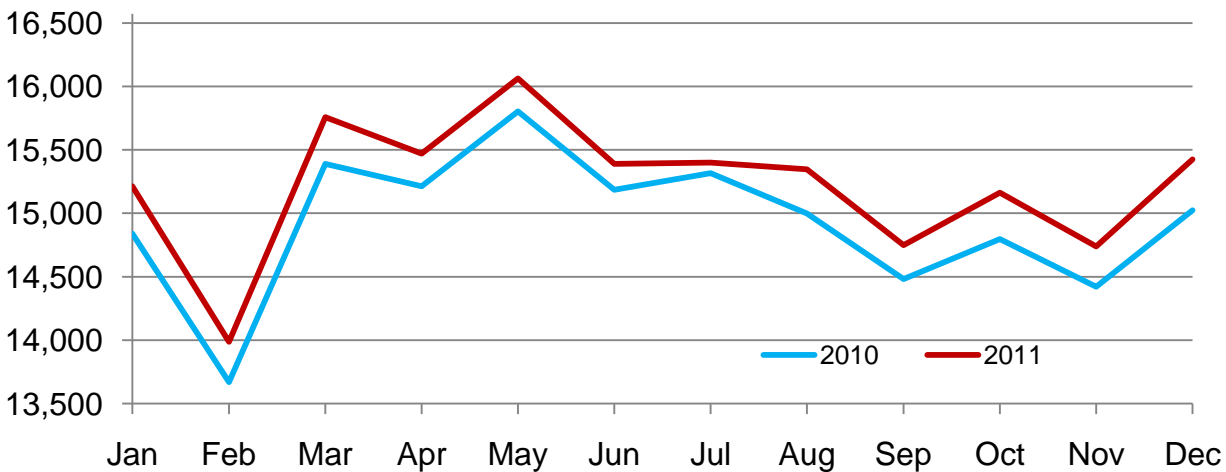
The number of milk cows on farms in the 23 major States was 8.49 million head, 99,000 head more than December 2010, and 12,000 head more than November 2011.

October - December Milk Production up 2.3 Percent

Milk production in the U.S. during the October - December quarter totaled 48.7 billion pounds, up 2.3 percent from the October - December quarter last year. The average number of milk cows in the U.S. during the quarter was 9.22 million head, 86,000 head more than the same period last year.

Monthly Milk Production - 23 Selected States

Million Pounds



Milk Cows and Production by Quarter – United States: 2010-2011

[May not add due to rounding]

Quarter	Milk cows ¹		Milk per cow ²		Milk production ²		
	2010	2011	2010	2011	2010	2011	Change from 2010
	(1,000 head)	(1,000 head)	(pounds)	(pounds)	(million pounds)	(million pounds)	(percent)
January-March	9,093	9,165	5,212	5,283	47,392	48,421	2.2
April-June	9,119	9,198	5,462	5,483	49,809	50,432	1.3
July-September	9,126	9,208	5,267	5,290	48,070	48,713	1.3
October-December	9,130	9,216	5,208	5,279	47,548	48,650	2.3
Annual	9,117	9,197	21,149	21,335	192,819	196,216	1.8

¹ Includes dry cows; excludes heifers not yet fresh.

² Excludes milk sucked by calves.

Milk Cows and Production: By Month, 23 Selected States, 2010-2011

Month	Milk cows ¹		Milk per cow ²		Milk production ²		
	2010	2011	2010	2011	2010	2011	Change from 2010
	(1,000 head)	(1,000 head)	(pounds)	(pounds)	(million pounds)	(million pounds)	(percent)
January	8,319	8,404	1,784	1,810	14,839	15,213	2.5
February	8,323	8,405	1,642	1,664	13,670	13,987	2.3
March	8,329	8,426	1,848	1,870	15,389	15,757	2.4
April	8,337	8,435	1,825	1,834	15,213	15,471	1.7
May	8,347	8,451	1,893	1,901	15,804	16,063	1.6
June	8,356	8,460	1,817	1,819	15,186	15,389	1.3
July	8,375	8,468	1,829	1,819	15,316	15,400	0.5
August	8,369	8,471	1,792	1,812	14,998	15,347	2.3
September	8,371	8,473	1,730	1,741	14,481	14,750	1.9
October	8,372	8,481	1,767	1,788	14,796	15,162	2.5
November	8,373	8,474	1,722	1,739	14,421	14,739	2.2
December	8,387	8,486	1,791	1,818	15,025	15,425	2.7
Annual	8,355	8,453	21,440	21,614	179,138	182,703	2.0

¹ Includes dry cows; excludes heifers not yet fresh.

² Excludes milk sucked by calves.

Estimated Milk Cows and Production by Month – United States: 2010-2011

Month	Milk cows ¹		Milk per cow ²		Milk production ²		
	2010	2011	2010	2011	2010	2011	Change from 2010
	(1,000 head)	(1,000 head)	(pounds)	(pounds)	(million pounds)	(million pounds)	(percent)
January	9,089	9,158	1,763	1,789	16,020	16,385	2.3
February	9,092	9,158	1,623	1,645	14,758	15,065	2.1
March	9,099	9,178	1,826	1,849	16,614	16,971	2.1
April	9,108	9,185	1,802	1,812	16,416	16,643	1.4
May	9,119	9,200	1,869	1,877	17,040	17,266	1.3
June	9,129	9,208	1,791	1,794	16,353	16,523	1.0
July	9,135	9,207	1,799	1,791	16,436	16,488	0.3
August	9,123	9,209	1,764	1,784	16,094	16,432	2.1
September	9,121	9,209	1,704	1,715	15,540	15,793	1.6
October	9,123	9,217	1,743	1,765	15,900	16,272	2.3
November	9,125	9,209	1,698	1,718	15,498	15,819	2.1
December	9,141	9,221	1,767	1,796	16,150	16,559	2.5
Annual	9,117	9,197	21,149	21,335	192,819	196,216	1.8

¹ Includes dry cows; excludes heifers not yet fresh.

² Excludes milk sucked by calves.

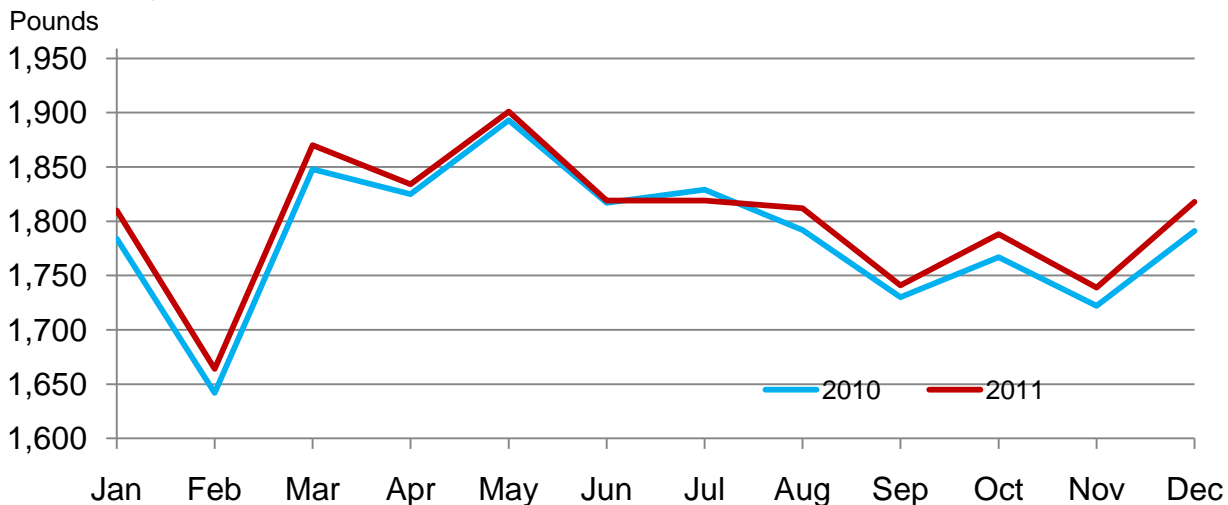
Milk Cows and Production – 23 Selected States: December 2010 and 2011

State	Milk cows ¹		Milk per cow ²		Milk production ²		Change from 2010
	2010	2011	2010	2011	2010	2011	
	(1,000 head)	(1,000 head)	(pounds)	(pounds)	(million pounds)	(million pounds)	(percent)
Arizona	184	191	1,970	1,965	362	375	3.6
California	1,749	1,779	1,925	1,965	3,367	3,496	3.8
Colorado	123	131	1,985	1,955	244	256	4.9
Florida	114	120	1,660	1,600	189	192	1.6
Idaho	574	581	1,870	1,910	1,073	1,110	3.4
Illinois	98	99	1,640	1,690	161	167	3.7
Indiana	171	174	1,685	1,760	288	306	6.3
Iowa	207	203	1,775	1,850	367	376	2.5
Kansas	122	123	1,805	1,780	220	219	-0.5
Michigan	361	370	1,920	1,950	693	722	4.2
Minnesota	470	465	1,605	1,635	754	760	0.8
Missouri	95	93	1,230	1,240	117	115	-1.7
New Mexico	321	334	2,065	2,025	663	676	2.0
New York	611	610	1,750	1,755	1,069	1,071	0.2
Ohio	270	270	1,610	1,625	435	439	0.9
Oregon	121	123	1,660	1,650	201	203	1.0
Pennsylvania	543	539	1,640	1,650	891	889	-0.2
Texas	420	435	1,845	1,855	775	807	4.1
Utah	86	89	1,780	1,800	153	160	4.6
Vermont	135	133	1,575	1,595	213	212	-0.5
Virginia	95	96	1,510	1,530	143	147	2.8
Washington	252	263	1,945	1,950	490	513	4.7
Wisconsin	1,265	1,265	1,705	1,750	2,157	2,214	2.6
23-State Total	8,387	8,486	1,791	1,818	15,025	15,425	2.7

¹ Includes dry cows; excludes heifers not yet fresh.

² Excludes milk sucked by calves.

Monthly Milk per Cow - 23 Selected States



Milk Cows and Production – 23 Selected States: November 2010 and 2011

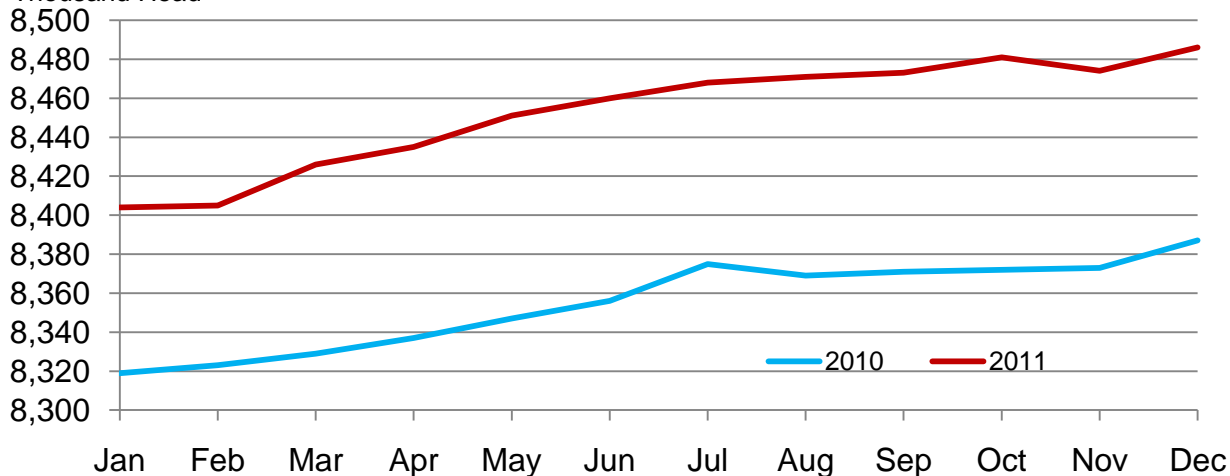
State	Milk cows ¹		Milk per cow ²		Milk production ²		Change from 2010
	2010	2011	2010	2011	2010	2011	
	(1,000 head)	(1,000 head)	(pounds)	(pounds)	(million pounds)	(million pounds)	(percent)
Arizona	183	192	1,835	1,855	336	356	6.0
California	1,751	1,778	1,865	1,880	3,266	3,343	2.4
Colorado	122	131	1,920	1,870	234	245	4.7
Florida	114	120	1,465	1,460	167	175	4.8
Idaho	572	579	1,830	1,840	1,047	1,065	1.7
Illinois	98	98	1,550	1,580	152	155	2.0
Indiana	170	172	1,650	1,680	281	289	2.8
Iowa	204	200	1,700	1,765	347	353	1.7
Kansas	121	123	1,730	1,725	209	212	1.4
Michigan	360	369	1,840	1,865	662	688	3.9
Minnesota	470	465	1,525	1,520	717	707	-1.4
Missouri	96	94	1,180	1,190	113	112	-0.9
New Mexico	319	333	1,985	2,020	633	673	6.3
New York	611	610	1,680	1,680	1,026	1,025	-0.1
Ohio	270	269	1,560	1,560	421	420	-0.2
Oregon	121	122	1,610	1,615	195	197	1.0
Pennsylvania	542	538	1,600	1,580	867	850	-2.0
Texas	415	435	1,750	1,810	726	787	8.4
Utah	85	88	1,720	1,740	146	153	4.8
Vermont	136	134	1,485	1,510	202	202	
Virginia	95	96	1,465	1,440	139	138	-0.7
Washington	253	263	1,870	1,880	473	494	4.4
Wisconsin	1,265	1,265	1,630	1,660	2,062	2,100	1.8
23-State Total	8,373	8,474	1,722	1,739	14,421	14,739	2.2

¹ Includes dry cows; excludes heifers not yet fresh.

² Excludes milk sucked by calves.

Monthly Milk Cows - 23 Selected States

Thousand Head



Milk Cows and Production – States and United States: Revised July-September 2010 and 2011

[May not add due to rounding]

State	July-September milk cows ¹		July-September milk production ²		Change from 2010
	2010	2011	2010	2011	
	(1,000 head)	(1,000 head)	(million pounds)	(million pounds)	(percent)
Alabama	11.0	10.0	34.0	30.0	-11.8
Alaska	0.6	0.5	2.1	1.7	-19.0
Arizona	180.0	187.0	972.0	1,023.0	5.2
Arkansas	12.0	11.5	35.0	32.0	-8.6
California	1,753.0	1,777.0	10,096.0	10,351.0	2.5
Colorado	120.0	129.0	724.0	766.0	5.8
Connecticut	19.0	18.5	89.0	88.0	-1.1
Delaware	5.0	5.0	21.0	21.4	1.9
Florida	114.0	119.0	470.0	503.0	7.0
Georgia	77.0	77.0	315.0	333.0	5.7
Hawaii	1.9	1.9	6.6	6.8	3.0
Idaho	570.0	582.0	3,365.0	3,491.0	3.7
Illinois	100.0	98.0	454.0	451.0	-0.7
Indiana	169.0	171.0	842.0	856.0	1.7
Iowa	207.0	199.0	1,062.0	1,043.0	-1.8
Kansas	120.0	124.0	622.0	648.0	4.2
Kentucky	78.0	75.0	270.0	257.0	-4.8
Louisiana	19.0	18.0	49.0	48.0	-2.0
Maine	32.0	32.0	148.0	150.0	1.4
Maryland	53.0	52.0	241.0	230.0	-4.6
Massachusetts	13.5	12.0	60.0	53.0	-11.7
Michigan	359.0	368.0	2,104.0	2,123.0	0.9
Minnesota	470.0	471.0	2,256.0	2,167.0	-3.9
Mississippi	16.0	14.0	47.0	43.0	-8.5
Missouri	99.0	95.0	343.0	317.0	-7.6
Montana	14.0	14.0	72.0	74.0	2.8
Nebraska	58.0	57.0	290.0	288.0	-0.7
Nevada	28.0	29.0	158.0	167.0	5.7
New Hampshire	15.0	14.0	73.0	69.0	-5.5
New Jersey	7.5	7.5	34.0	33.0	-2.9
New Mexico	320.0	330.0	1,969.0	2,045.0	3.9
New York	611.0	610.0	3,224.0	3,218.0	-0.2
North Carolina	44.0	45.0	206.0	213.0	3.4
North Dakota	21.0	19.0	98.0	85.0	-13.3
Ohio	270.0	267.0	1,299.0	1,260.0	-3.0
Oklahoma	54.0	52.0	224.0	215.0	-4.0
Oregon	121.0	123.0	618.0	641.0	3.7
Pennsylvania	541.0	539.0	2,679.0	2,618.0	-2.3
Rhode Island	1.1	1.1	4.9	4.8	-2.0
South Carolina	16.0	16.0	60.0	60.0	
South Dakota	91.0	90.0	473.0	461.0	-2.5
Tennessee	52.0	49.0	194.0	182.0	-6.2
Texas	415.0	435.0	2,143.0	2,353.0	9.8
Utah	85.0	88.0	464.0	476.0	2.6
Vermont	136.0	134.0	628.0	629.0	0.2
Virginia	95.0	96.0	419.0	413.0	-1.4
Washington	252.0	265.0	1,510.0	1,601.0	6.0
West Virginia	10.0	10.0	39.0	39.0	
Wisconsin	1,263.0	1,264.0	6,532.0	6,504.0	-0.4
Wyoming	6.0	6.0	31.4	31.2	-0.6
United States	9,126.0	9,208.0	48,070.0	48,713.0	1.3

¹ Includes dry cows, excludes heifers not yet fresh.

² Excludes milk sucked by calves.

Milk Cows and Production – States and United States: Preliminary October-December 2010 and 2011

[May not add due to rounding]

State	October-December milk cows ¹		October-December milk production ²		Change from 2010
	2010	2011	2010	2011	
	(1,000 head)	(1,000 head)	(million pounds)	(million pounds)	(percent)
Alabama	11.0	10.0	35.0	32.0	-8.6
Alaska	0.5	0.5	1.6	1.7	6.3
Arizona	183.0	192.0	1,032.0	1,089.0	5.5
Arkansas	12.0	11.5	35.0	34.0	-2.9
California	1,751.0	1,778.0	9,979.0	10,262.0	2.8
Colorado	122.0	131.0	719.0	757.0	5.3
Connecticut	19.0	18.5	89.0	88.0	-1.1
Delaware	5.0	5.0	21.0	22.0	4.8
Florida	114.0	120.0	508.0	529.0	4.1
Georgia	78.0	78.0	329.0	354.0	7.6
Hawaii	1.9	1.9	6.3	6.4	1.6
Idaho	573.0	580.0	3,224.0	3,296.0	2.2
Illinois	98.0	98.0	466.0	479.0	2.8
Indiana	170.0	172.0	851.0	887.0	4.2
Iowa	205.0	201.0	1,066.0	1,088.0	2.1
Kansas	121.0	123.0	641.0	651.0	1.6
Kentucky	77.0	75.0	276.0	274.0	-0.7
Louisiana	19.0	18.0	53.0	54.0	1.9
Maine	32.0	32.0	145.0	149.0	2.8
Maryland	53.0	52.0	244.0	236.0	-3.3
Massachusetts	13.5	12.0	57.0	52.0	-8.8
Michigan	360.0	369.0	2,044.0	2,120.0	3.7
Minnesota	470.0	467.0	2,204.0	2,192.0	-0.5
Mississippi	16.0	14.0	50.0	47.0	-6.0
Missouri	96.0	94.0	344.0	339.0	-1.5
Montana	14.0	14.0	70.0	73.0	4.3
Nebraska	58.0	57.0	288.0	296.0	2.8
Nevada	28.0	29.0	157.0	161.0	2.5
New Hampshire	15.0	14.0	72.0	68.0	-5.6
New Jersey	7.5	7.5	33.0	32.0	-3.0
New Mexico	319.0	333.0	1,949.0	2,046.0	5.0
New York	611.0	610.0	3,149.0	3,148.0	
North Carolina	44.0	45.0	211.0	225.0	6.6
North Dakota	20.0	18.0	93.0	81.0	-12.9
Ohio	270.0	269.0	1,288.0	1,288.0	
Oklahoma	54.0	52.0	234.0	227.0	-3.0
Oregon	121.0	122.0	600.0	608.0	1.3
Pennsylvania	542.0	538.0	2,645.0	2,611.0	-1.3
Rhode Island	1.1	1.1	4.8	4.8	
South Carolina	16.0	16.0	66.0	69.0	4.5
South Dakota	90.0	89.0	463.0	469.0	1.3
Tennessee	51.0	50.0	202.0	200.0	-1.0
Texas	417.0	435.0	2,238.0	2,407.0	7.6
Utah	85.0	88.0	451.0	470.0	4.2
Vermont	136.0	134.0	622.0	623.0	0.2
Virginia	95.0	96.0	421.0	424.0	0.7
Washington	253.0	264.0	1,458.0	1,530.0	4.9
West Virginia	10.0	10.0	39.0	38.0	-2.6
Wisconsin	1,265.0	1,265.0	6,343.0	6,482.0	2.2
Wyoming	6.0	6.0	30.9	30.0	-2.9
United States	9,130.0	9,216.0	47,548.0	48,650.0	2.3

¹ Includes dry cows, excludes heifers not yet fresh.

² Excludes milk sucked by calves.

Statistical Methodology

Survey Procedures: Primary data used to determine these estimates were obtained from a sample of producers. Individual States maintain a list of all known milk producers and information on the size of their herd. States use all known sources of producers to ensure that their lists are as complete as possible. Generally, all large producers and a sample of small producers are included in the survey. Questionnaires are mailed to producers near the end of the month to obtain data for the first day of the month. Additional reports are obtained by telephone, as needed, to supplement the mail response. Where feasible, States utilize state and federal administrative data, rather than conduct a monthly survey, to estimate milk production. This eliminates duplication of data gathering by different government agencies. Indications of milk cow inventory are also obtained in the January and July Cattle Surveys.

Estimation Procedures: State offices prepare these estimates by using a combination of survey indications, historic trends, and any available administrative data. Individual State estimates are reviewed by the Agricultural Statistics Board for reasonableness.

Revision Policy: Milk production, rate per cow, and number of cows are subject to revision the following month for monthly States or the following quarter for the quarterly States. Normally, Federal Market Order sales are the main basis for revisions. However, data for all orders are not available in time for this revision. Estimates are again subject to revisions in February each year based on additional administrative data. In the event that additional changes are necessary, a third revision is possible in February the following year. Estimates are again reviewed after data from the five-year Census of Agriculture are available. No revisions are made after that date.

Reliability: Since all operations with dairy animals are not included in the sample, survey estimates are subject to sampling variability. Survey results are also subject to non-sampling errors such as omissions, duplications, and mistakes in reporting, recording, and processing the data. The effects of these errors cannot be measured directly. They are minimized through rigid quality controls in the data collection process and through a careful review of all reported data for consistency and reasonableness.

To assist users in evaluating the reliability of the estimates in this report, the "Root Mean Square Error" is shown for selected items on the next page. The "Root Mean Square Error" is a statistical measure based on past performance and is computed using the differences between first and final estimates. The "Root Mean Square Error" for milk cow inventory estimates over the past 20 quarters is 0.3 percent. This means that chances are 2 out of 3 that the final estimate will not be above or below the current estimate of 9.22 million head by more than 0.3 percent. Chances are 9 out of 10 that the difference will not exceed 0.5 percent.

Reliability of Quarterly Milk Production Estimates

[Based on data for the past 20 quarters]

Item	Root mean square error	90 percent confidence level	Difference between first and latest estimate				
			Average	Smallest	Largest	Quarters	
						Below latest	Above latest
	(percent)	(percent)	(1,000)	(1,000)	(1,000)	(number)	(number)
Milk production	0.1	0.2	36	0	95	13	6
All milk cows	0.3	0.5	19	0	52	16	0

Information Contacts

Listed below are the commodity specialists in the Livestock Branch of the National Agricultural Statistics Service to contact for additional information. E-mail inquiries may be sent to nass@nass.usda.gov

Dan Kerestes, Chief, Livestock Branch	(202) 720-3570
Scott Hollis, Head, Livestock Section	(202) 690-2424
Travis Averill – Cattle, Cattle on Feed	(202) 720-3040
Sherry Bertramsen – Livestock Slaughter	(515) 284-4340
Doug Bounds – Hogs and Pigs, Goats	(202) 720-3106
Mike Miller – Milk Production and Milk Cows	(202) 720-3278
Everett Olbert – Dairy Products Prices	(202) 720-4751
Lorie Warren – Dairy Products, Sheep	(202) 690-3236

Access to NASS Reports

For your convenience, you may access NASS reports and products the following ways:

- All reports are available electronically, at no cost, on the NASS web site: <http://www.nass.usda.gov>
- Both national and state specific reports are available via a free e-mail subscription. To set-up this free subscription, visit <http://www.nass.usda.gov> and in the “Receive NASS Updates” box under “Receive reports by Email,” click on “National” or “State” to select the reports you would like to receive.
- Printed reports may be purchased from the National Technical Information Service (NTIS) by calling toll-free (800) 999-6779, or (703) 605-6220 if calling from outside the United States or Canada. Accepted methods of payment are Visa, MasterCard, check, or money order.

For more information on NASS surveys and reports, call the NASS Agricultural Statistics Hotline at (800) 727-9540, 7:30 a.m. to 4:00 p.m. ET, or e-mail: nass@nass.usda.gov.

The United States Department of Agriculture (USDA) prohibits discrimination in all its programs and activities on the basis of race, color, national origin, age, disability, and where applicable, sex, marital status, familial status, parental status, religion, sexual orientation, political beliefs, genetic information, reprisal, or because all or a part of an individual's income is derived from any public assistance program. (Not all prohibited bases apply to all programs.) Persons with disabilities who require alternative means for communication of program information (Braille, large print, audiotape, etc.) should contact USDA's TARGET Center at (202) 720-2600 (voice and TDD).

To file a complaint of discrimination, write to USDA, Assistant Secretary for Civil Rights, Office of the Assistant Secretary for Civil Rights, 1400 Independence Avenue, S.W., Stop 9410, Washington, DC 20250-9410, or call toll-free at (866) 632-9992 (English) or (800) 877-8339 (TDD) or (866) 377-8642 (English Federal-relay) or (800) 845-6136 (Spanish Federal-relay). USDA is an equal opportunity provider and employer.



United States Department of Agriculture



Moving Agriculture Forward

USDA – Growing, Innovating, and Celebrating 150 Years

February 23-24, 2012

Crystal Gateway Marriott Hotel • Arlington, Virginia

Early Registration \$375 until January 23, 2012

\$425 after January 23

To register, go to:

www.usda.gov/oce/forum

— more than 80 speakers —

Program at a Glance is available online