



# Milk Production

ISSN: 1949-1557

Released July 19, 2012, by the National Agricultural Statistics Service (NASS), Agricultural Statistics Board, United States Department of Agriculture (USDA).

## June Milk Production Up 1.0 Percent

**Milk production** in the 23 major States during June totaled 15.5 billion pounds, up 1.0 percent from June 2011. May revised production at 16.4 billion pounds, was up 1.9 percent from May 2011. The May revision represented a decrease of 22 million pounds or 0.1 percent from last month's preliminary production estimate.

**Production per cow** in the 23 major States averaged 1,827 pounds for June, 7 pounds above June 2011.

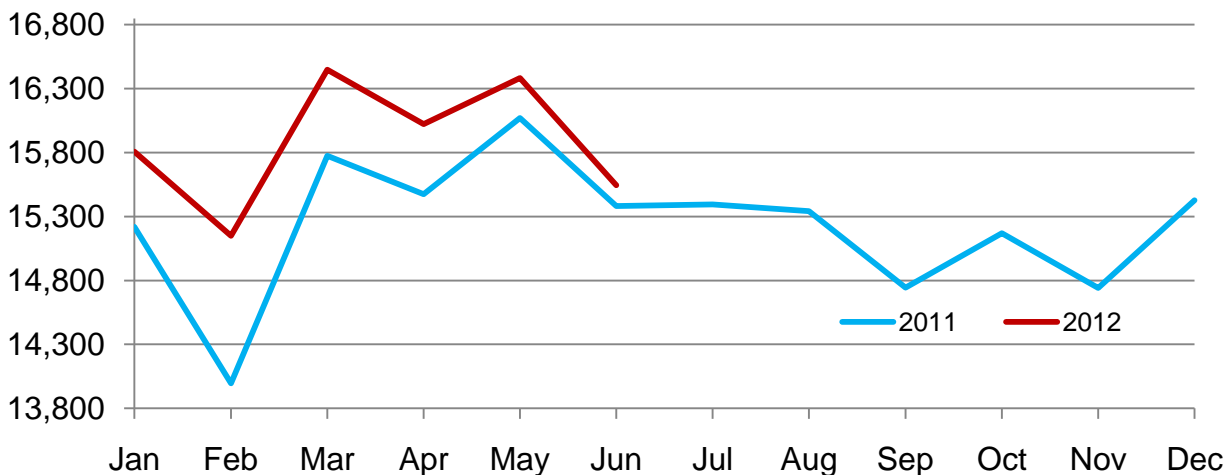
**The number of milk cows** on farms in the 23 major States was 8.51 million head, 57,000 head more than June 2011, and 14,000 head less than May 2012.

## April - June Milk Production Up 2.0 Percent

Milk production in the United States during the April - June quarter totaled 51.5 billion pounds, up 2.0 percent from the April - June quarter last year. The average number of milk cows in the United States during the quarter was 9.26 million head, 66,000 head more than the same period last year.

## Monthly Milk Production – 23 Selected States

Million pounds



## Milk Cows and Production by Quarter – United States: 2011-2012

[May not add due to rounding]

Quarter	Milk cows <sup>1</sup>		Milk per cow <sup>2</sup>		Milk production <sup>2</sup>		
	2011	2012	2011	2012	2011	2012	Change from 2011
	(1,000 head)	(1,000 head)	(pounds)	(pounds)	(million pounds)	(million pounds)	(percent)
January-March .....	9,168	9,254	5,286	5,513	48,459	51,017	5.3
April-June .....	9,191	9,257	5,489	5,561	50,448	51,482	2.0
July-September .....	9,200		5,292		48,684		
October-December .....	9,216		5,279		48,654		
Annual .....	9,194		21,345		196,245		

<sup>1</sup> Includes dry cows; excludes heifers not yet fresh.

<sup>2</sup> Excludes milk sucked by calves.

## Milk Cows and Production: By Month, 23 Selected States, 2011-2012

Month	Milk cows <sup>1</sup>		Milk per cow <sup>2</sup>		Milk production <sup>2</sup>		
	2011	2012	2011	2012	2011	2012	Change from 2011
	(1,000 head)	(1,000 head)	(pounds)	(pounds)	(million pounds)	(million pounds)	(percent)
January .....	8,405	8,502	1,811	1,859	15,219	15,806	3.9
February .....	8,408	8,510	1,665	1,780	13,997	15,149	8.2
March .....	8,425	8,521	1,872	1,930	15,773	16,447	4.3
April .....	8,431	8,527	1,835	1,879	15,475	16,021	3.5
May .....	8,447	8,521	1,902	1,923	16,069	16,382	1.9
June .....	8,450	8,507	1,820	1,827	15,382	15,543	1.0
July .....	8,459		1,820		15,395		
August .....	8,463		1,813		15,342		
September .....	8,466		1,742		14,744		
October .....	8,475		1,790		15,170		
November .....	8,475		1,739		14,742		
December .....	8,485		1,818		15,426		
Annual .....	8,449		21,627		182,734		

<sup>1</sup> Includes dry cows; excludes heifers not yet fresh.

<sup>2</sup> Excludes milk sucked by calves.

## Estimated Milk Cows and Production by Month – United States: 2011-2012

Month	Milk cows <sup>1</sup>		Milk per cow <sup>2</sup>		Milk production <sup>2</sup>		
	2011	2012	2011	2012	2011	2012	Change from 2011
	(1,000 head)	(1,000 head)	(pounds)	(pounds)	(million pounds)	(million pounds)	(percent)
January .....	9,160	9,242	1,790	1,841	16,393	17,011	3.8
February .....	9,163	9,254	1,645	1,762	15,077	16,305	8.1
March .....	9,180	9,267	1,851	1,910	16,989	17,701	4.2
April .....	9,182	9,271	1,814	1,857	16,652	17,220	3.4
May .....	9,194	9,260	1,879	1,900	17,278	17,592	1.8
June .....	9,196	9,241	1,796	1,804	16,518	16,670	0.9
July .....	9,198		1,792		16,479		
August .....	9,200		1,785		16,422		
September .....	9,201		1,715		15,783		
October .....	9,212		1,767		16,278		
November .....	9,213		1,717		15,820		
December .....	9,223		1,795		16,556		
Annual .....	9,194		21,345		196,245		

<sup>1</sup> Includes dry cows; excludes heifers not yet fresh.

<sup>2</sup> Excludes milk sucked by calves.

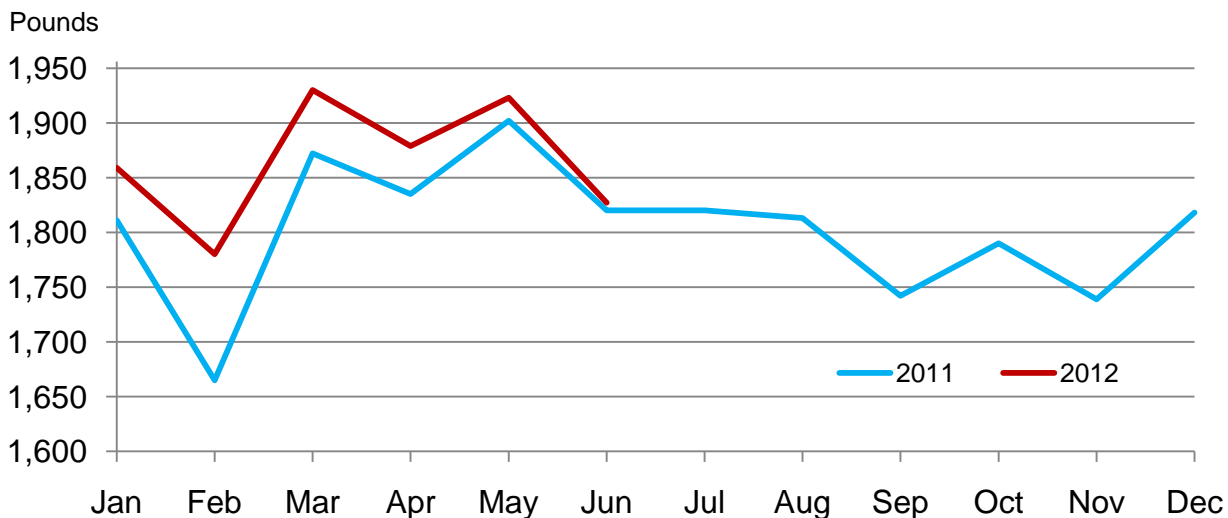
## Milk Cows and Production – 23 Selected States: June 2011 and 2012

State	Milk cows <sup>1</sup>		Milk per cow <sup>2</sup>		Milk production <sup>2</sup>		Change from 2011
	2011	2012	2011	2012	2011	2012	
	(1,000 head)	(1,000 head)	(pounds)	(pounds)	(million pounds)	(million pounds)	(percent)
Arizona .....	186	188	1,980	2,010	368	378	2.7
California .....	1,769	1,783	1,985	1,975	3,511	3,521	0.3
Colorado .....	127	133	1,990	2,010	253	267	5.5
Florida .....	119	123	1,630	1,660	194	204	5.2
Idaho .....	578	578	1,960	1,990	1,133	1,150	1.5
Illinois .....	98	100	1,600	1,610	157	161	2.5
Indiana .....	171	176	1,715	1,745	293	307	4.8
Iowa .....	204	205	1,775	1,740	362	357	-1.4
Kansas .....	123	124	1,765	1,790	217	222	2.3
Michigan .....	364	376	1,960	1,965	713	739	3.6
Minnesota .....	468	465	1,610	1,615	753	751	-0.3
Missouri .....	96	94	1,210	1,265	116	119	2.6
New Mexico .....	328	332	2,100	2,035	689	676	-1.9
New York .....	610	610	1,770	1,795	1,080	1,095	1.4
Ohio .....	266	270	1,575	1,630	419	440	5.0
Oregon .....	122	123	1,730	1,730	211	213	0.9
Pennsylvania .....	542	535	1,620	1,610	878	861	-1.9
Texas .....	434	440	1,850	1,785	803	785	-2.2
Utah .....	88	90	1,770	1,825	156	164	5.1
Vermont .....	134	133	1,580	1,610	212	214	0.9
Virginia .....	96	96	1,450	1,450	139	139	
Washington .....	262	262	2,000	2,000	524	524	
Wisconsin .....	1,265	1,271	1,740	1,775	2,201	2,256	2.5
23-State Total .....	8,450	8,507	1,820	1,827	15,382	15,543	1.0

<sup>1</sup> Includes dry cows; excludes heifers not yet fresh.

<sup>2</sup> Excludes milk sucked by calves.

## Monthly Milk per Cow – 23 Selected States



## Milk Cows and Production – 23 Selected States: May 2011 and 2012

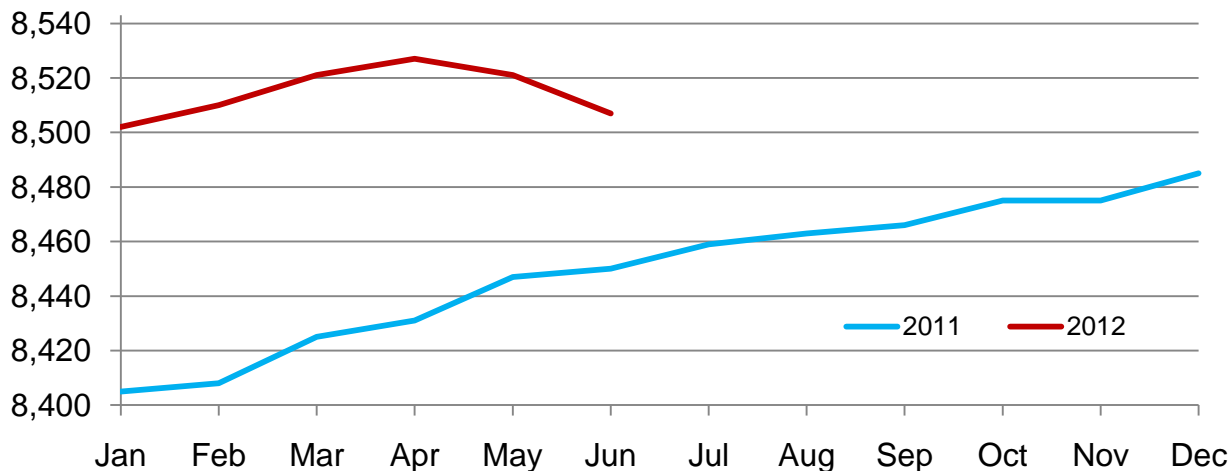
State	Milk cows <sup>1</sup>		Milk per cow <sup>2</sup>		Milk production <sup>2</sup>		Change from 2011
	2011	2012	2011	2012	2011	2012	
	(1,000 head)	(1,000 head)	(pounds)	(pounds)	(million pounds)	(million pounds)	(percent)
Arizona .....	186	194	2,140	2,155	398	418	5.0
California .....	1,767	1,782	2,080	2,100	3,675	3,742	1.8
Colorado .....	126	132	2,040	2,105	257	278	8.2
Florida .....	119	123	1,725	1,770	205	218	6.3
Idaho .....	578	578	1,980	2,020	1,144	1,168	2.1
Illinois .....	98	100	1,700	1,720	167	172	3.0
Indiana .....	171	176	1,825	1,855	312	326	4.5
Iowa .....	208	206	1,860	1,855	387	382	-1.3
Kansas .....	122	124	1,855	1,895	226	235	4.0
Michigan .....	364	375	2,040	2,050	743	769	3.5
Minnesota .....	468	465	1,680	1,670	786	777	-1.1
Missouri .....	96	94	1,360	1,390	131	131	
New Mexico .....	327	336	2,180	2,150	713	722	1.3
New York .....	610	610	1,845	1,890	1,125	1,153	2.5
Ohio .....	268	271	1,680	1,730	450	469	4.2
Oregon .....	121	123	1,790	1,810	217	223	2.8
Pennsylvania .....	543	536	1,730	1,715	939	919	-2.1
Texas .....	430	440	1,955	1,925	841	847	0.7
Utah .....	87	91	1,810	1,865	157	170	8.3
Vermont .....	135	133	1,655	1,675	223	223	
Virginia .....	96	96	1,585	1,575	152	151	-0.7
Washington .....	261	265	2,055	2,075	536	550	2.6
Wisconsin .....	1,266	1,271	1,805	1,840	2,285	2,339	2.4
23-State Total .....	8,447	8,521	1,902	1,923	16,069	16,382	1.9

<sup>1</sup> Includes dry cows; excludes heifers not yet fresh.

<sup>2</sup> Excludes milk sucked by calves.

## Monthly Milk Cows – 23 Selected States

Thousand head



## Milk Cows and Production – States and United States: Revised January-March 2011 and 2012

[May not add due to rounding]

State	January-March milk cows <sup>1</sup>		January-March milk production <sup>2</sup>		Change from 2011
	2011	2012	2011	2012	
	(1,000 head)	(1,000 head)	(million pounds)	(million pounds)	(percent)
Alabama .....	11.0	10.0	43.0	39.0	-9.3
Alaska .....	0.6	0.5	1.8	1.7	-5.6
Arizona .....	186.0	192.0	1,135.0	1,230.0	8.4
Arkansas .....	12.0	11.0	39.0	38.0	-2.6
California .....	1,756.0	1,784.0	10,141.0	10,925.0	7.7
Colorado .....	124.0	133.0	716.0	780.0	8.9
Connecticut .....	18.5	18.5	92.0	93.0	1.1
Delaware .....	5.0	5.0	24.3	25.0	2.9
Florida .....	118.0	122.0	627.0	655.0	4.5
Georgia .....	80.0	80.0	380.0	420.0	10.5
Hawaii .....	1.9	1.9	6.9	7.2	4.3
Idaho .....	574.0	580.0	3,117.0	3,285.0	5.4
Illinois .....	98.0	100.0	481.0	511.0	6.2
Indiana .....	172.0	175.0	874.0	934.0	6.9
Iowa .....	209.0	205.0	1,093.0	1,130.0	3.4
Kansas .....	122.0	123.0	638.0	665.0	4.2
Kentucky .....	76.0	75.0	285.0	305.0	7.0
Louisiana .....	19.0	18.0	69.0	68.0	-1.4
Maine .....	32.0	33.0	147.0	153.0	4.1
Maryland .....	53.0	52.0	253.0	255.0	0.8
Massachusetts .....	13.5	12.0	57.0	55.0	-3.5
Michigan .....	364.0	374.0	2,086.0	2,227.0	6.8
Minnesota .....	470.0	465.0	2,243.0	2,300.0	2.5
Mississippi .....	15.0	14.5	59.0	58.0	-1.7
Missouri .....	95.0	93.0	354.0	366.0	3.4
Montana .....	14.0	14.0	69.0	74.0	7.2
Nebraska .....	57.0	56.0	290.0	300.0	3.4
Nevada .....	29.0	29.0	160.0	162.0	1.3
New Hampshire .....	15.0	14.0	75.0	71.0	-5.3
New Jersey .....	8.0	7.5	35.0	35.0	
New Mexico .....	324.0	335.0	1,991.0	2,086.0	4.8
New York .....	610.0	610.0	3,175.0	3,291.0	3.7
North Carolina .....	45.0	45.0	230.0	249.0	8.3
North Dakota .....	20.0	18.0	88.0	85.0	-3.4
Ohio .....	270.0	270.0	1,291.0	1,329.0	2.9
Oklahoma .....	54.0	52.0	241.0	251.0	4.1
Oregon .....	119.0	123.0	595.0	619.0	4.0
Pennsylvania .....	543.0	540.0	2,640.0	2,668.0	1.1
Rhode Island .....	1.1	1.1	4.8	4.9	2.1
South Carolina .....	16.0	16.0	75.0	81.0	8.0
South Dakota .....	91.0	92.0	460.0	492.0	7.0
Tennessee .....	50.0	51.0	216.0	222.0	2.8
Texas .....	425.0	437.0	2,357.0	2,503.0	6.2
Utah .....	87.0	91.0	442.0	484.0	9.5
Vermont .....	135.0	133.0	636.0	641.0	0.8
Virginia .....	95.0	96.0	439.0	454.0	3.4
Washington .....	252.0	263.0	1,469.0	1,560.0	6.2
West Virginia .....	10.0	10.0	39.0	40.0	2.6
Wisconsin .....	1,266.0	1,267.0	6,449.0	6,759.0	4.8
Wyoming .....	6.0	6.0	30.4	29.8	-2.0
United States .....	9,168.0	9,254.0	48,459.0	51,017.0	5.3

<sup>1</sup> Includes dry cows, excludes heifers not yet fresh.

<sup>2</sup> Excludes milk sucked by calves.

## Milk Cows and Production – States and United States: Preliminary April-June 2011 and 2012

[May not add due to rounding]

State	April-June milk cows <sup>1</sup>		April-June milk production <sup>2</sup>		Change from 2011
	2011	2012	2011	2012	
	(1,000 head)	(1,000 head)	(million pounds)	(million pounds)	(percent)
Alabama .....	11.0	10.0	40.0	37.0	-7.5
Alaska .....	0.5	0.4	1.7	1.4	-17.6
Arizona .....	186.0	192.0	1,163.0	1,214.0	4.4
Arkansas .....	12.0	10.5	40.0	36.0	-10.0
California .....	1,767.0	1,783.0	10,705.0	10,895.0	1.8
Colorado .....	126.0	132.0	760.0	813.0	7.0
Connecticut .....	18.5	18.5	93.0	93.0	
Delaware .....	5.0	5.0	23.5	24.8	5.5
Florida .....	119.0	123.0	606.0	643.0	6.1
Georgia .....	80.0	80.0	382.0	398.0	4.2
Hawaii .....	1.9	2.0	7.3	7.6	4.1
Idaho .....	577.0	578.0	3,354.0	3,422.0	2.0
Illinois .....	98.0	100.0	489.0	506.0	3.5
Indiana .....	171.0	176.0	910.0	955.0	4.9
Iowa .....	207.0	206.0	1,121.0	1,123.0	0.2
Kansas .....	122.0	124.0	663.0	689.0	3.9
Kentucky .....	77.0	74.0	296.0	292.0	-1.4
Louisiana .....	18.0	18.0	61.0	60.0	-1.6
Maine .....	32.0	33.0	152.0	158.0	3.9
Maryland .....	52.0	51.0	251.0	252.0	0.4
Massachusetts .....	13.0	12.0	58.0	56.0	-3.4
Michigan .....	363.0	376.0	2,164.0	2,260.0	4.4
Minnesota .....	468.0	465.0	2,299.0	2,298.0	
Mississippi .....	14.0	14.0	55.0	53.0	-3.6
Missouri .....	96.0	94.0	378.0	386.0	2.1
Montana .....	14.0	14.0	72.0	76.0	5.6
Nebraska .....	57.0	56.0	301.0	299.0	-0.7
Nevada .....	29.0	29.0	170.0	168.0	-1.2
New Hampshire .....	14.5	14.0	74.0	72.0	-2.7
New Jersey .....	8.0	7.0	36.0	33.0	-8.3
New Mexico .....	327.0	335.0	2,095.0	2,116.0	1.0
New York .....	610.0	610.0	3,285.0	3,367.0	2.5
North Carolina .....	45.0	46.0	234.0	245.0	4.7
North Dakota .....	19.0	18.0	88.0	86.0	-2.3
Ohio .....	267.0	271.0	1,303.0	1,371.0	5.2
Oklahoma .....	53.0	50.0	244.0	232.0	-4.9
Oregon .....	121.0	123.0	634.0	648.0	2.2
Pennsylvania .....	543.0	536.0	2,735.0	2,689.0	-1.7
Rhode Island .....	1.1	1.1	5.2	5.0	-3.8
South Carolina .....	16.0	15.5	74.0	74.0	
South Dakota .....	92.0	93.0	480.0	497.0	3.5
Tennessee .....	49.0	50.0	212.0	208.0	-1.9
Texas .....	430.0	440.0	2,460.0	2,475.0	0.6
Utah .....	87.0	91.0	464.0	497.0	7.1
Vermont .....	135.0	133.0	650.0	653.0	0.5
Virginia .....	96.0	96.0	443.0	443.0	
Washington .....	260.0	264.0	1,569.0	1,602.0	2.1
West Virginia .....	10.0	10.0	40.0	41.0	2.5
Wisconsin .....	1,266.0	1,271.0	6,676.0	6,881.0	3.1
Wyoming .....	6.0	6.0	31.5	31.3	-0.6
United States .....	9,191.0	9,257.0	50,448.0	51,482.0	2.0

<sup>1</sup> Includes dry cows, excludes heifers not yet fresh.

<sup>2</sup> Excludes milk sucked by calves.

## Statistical Methodology

**Survey Procedures:** Primary data used to determine these estimates were obtained from a sample of producers. Individual States maintain a list of all known milk producers and information on the size of their herd. States use all known sources of producers to ensure that their lists are as complete as possible. Generally, all large producers and a sample of small producers are included in the survey. Questionnaires are mailed to producers near the end of the month to obtain data for the first day of the month. Additional reports are obtained by telephone, as needed, to supplement the mail response. Where feasible, States utilize state and federal administrative data to estimate milk production. This eliminates duplication of data gathering by different government agencies. Indications of milk cow inventory are also obtained in the January and July Cattle Surveys.

**Estimation Procedures:** State offices prepare these estimates by using a combination of survey indications, historic trends, and any available administrative data. Individual State estimates are reviewed by the Agricultural Statistics Board for reasonableness.

**Revision Policy:** Milk production, rate per cow, and number of cows are subject to revision the following month for monthly States or the following quarter for the quarterly States. Normally, Federal Market Order sales are the main basis for revisions. However, data for all orders are not available in time for this revision. Estimates are again subject to revisions in February each year based on additional administrative data. In the event that additional changes are necessary, a third revision is possible in February the following year. Estimates are again reviewed after data from the five-year Census of Agriculture are available. No revisions are made after that date.

**Reliability:** Since all operations with dairy animals are not included in the sample, survey estimates are subject to sampling variability. Survey results are also subject to non-sampling errors such as omissions, duplications, and mistakes in reporting, recording, and processing the data. The effects of these errors cannot be measured directly. They are minimized through rigid quality controls in the data collection process and through a careful review of all reported data for consistency and reasonableness.

To assist users in evaluating the reliability of the estimates in this report, the "Root Mean Square Error" is shown for selected items on the next page. The "Root Mean Square Error" is a statistical measure based on past performance and is computed using the differences between first and final estimates. The "Root Mean Square Error" for milk cow inventory estimates over the past 20 quarters is 0.3 percent. This means that chances are 2 out of 3 that the final estimate will not be above or below the current estimate of 9.26 million head by more than 0.3 percent. Chances are 9 out of 10 that the difference will not exceed 0.5 percent.

## Reliability of Quarterly Milk Production Estimates

[Based on data for the past 20 quarters]

Item	Root mean square error	90 percent confidence level	Difference between first and latest estimate				
			Average	Smallest	Largest	Quarters	
						Below latest	Above latest
	(percent)	(percent)	(1,000)	(1,000)	(1,000)	(number)	(number)
Milk production .....	0.1	0.2	36	0	96	16	3
All milk cows .....	0.3	0.5	18	0	52	14	2

## Information Contacts

Listed below are the commodity specialists in the Livestock Branch of the National Agricultural Statistics Service to contact for additional information. E-mail inquiries may be sent to [nass@nass.usda.gov](mailto:nass@nass.usda.gov)

Dan Kerestes, Chief, Livestock Branch .....	(202) 720-3570
Scott Hollis, Head, Livestock Section .....	(202) 690-2424
Travis Averill – Cattle, Cattle on Feed .....	(202) 720-3040
Sherry Bertramsen – Livestock Slaughter .....	(515) 284-4340
Doug Bounds – Hogs and Pigs .....	(202) 720-3106
Donnie Fike – Dairy Products .....	(202) 690-3236
Mike Miller – Milk Production and Milk Cows .....	(202) 720-3278
Vacant – Sheep and Goats .....	(202) 720-4751



## Access to NASS Reports

For your convenience, you may access NASS reports and products the following ways:

- All reports are available electronically, at no cost, on the NASS web site: <http://www.nass.usda.gov>
- Both national and state specific reports are available via a free e-mail subscription. To set-up this free subscription, visit <http://www.nass.usda.gov> and in the “Follow NASS” box under “Receive reports by Email,” click on “National” or “State” to select the reports you would like to receive.
- Printed reports may be purchased from the National Technical Information Service (NTIS) by calling toll-free (800) 999-6779, or (703) 605-6220 if calling from outside the United States or Canada. Accepted methods of payment are Visa, MasterCard, check, or money order.

For more information on NASS surveys and reports, call the NASS Agricultural Statistics Hotline at (800) 727-9540, 7:30 a.m. to 4:00 p.m. ET, or e-mail: [nass@nass.usda.gov](mailto:nass@nass.usda.gov).

The United States Department of Agriculture (USDA) prohibits discrimination in all its programs and activities on the basis of race, color, national origin, age, disability, and where applicable, sex, marital status, familial status, parental status, religion, sexual orientation, political beliefs, genetic information, reprisal, or because all or a part of an individual's income is derived from any public assistance program. (Not all prohibited bases apply to all programs.) Persons with disabilities who require alternative means for communication of program information (Braille, large print, audiotape, etc.) should contact USDA's TARGET Center at (202) 720-2600 (voice and TDD).

To file a complaint of discrimination, write to USDA, Assistant Secretary for Civil Rights, Office of the Assistant Secretary for Civil Rights, 1400 Independence Avenue, S.W., Stop 9410, Washington, DC 20250-9410, or call toll-free at (866) 632-9992 (English) or (800) 877-8339 (TDD) or (866) 377-8642 (English Federal-relay) or (800) 845-6136 (Spanish Federal-relay). USDA is an equal opportunity provider and employer.