



Milk Production

ISSN: 1949-1557

Released August 17, 2012, by the National Agricultural Statistics Service (NASS), Agricultural Statistics Board, United States Department of Agriculture (USDA).

July Milk Production Up 0.8 Percent

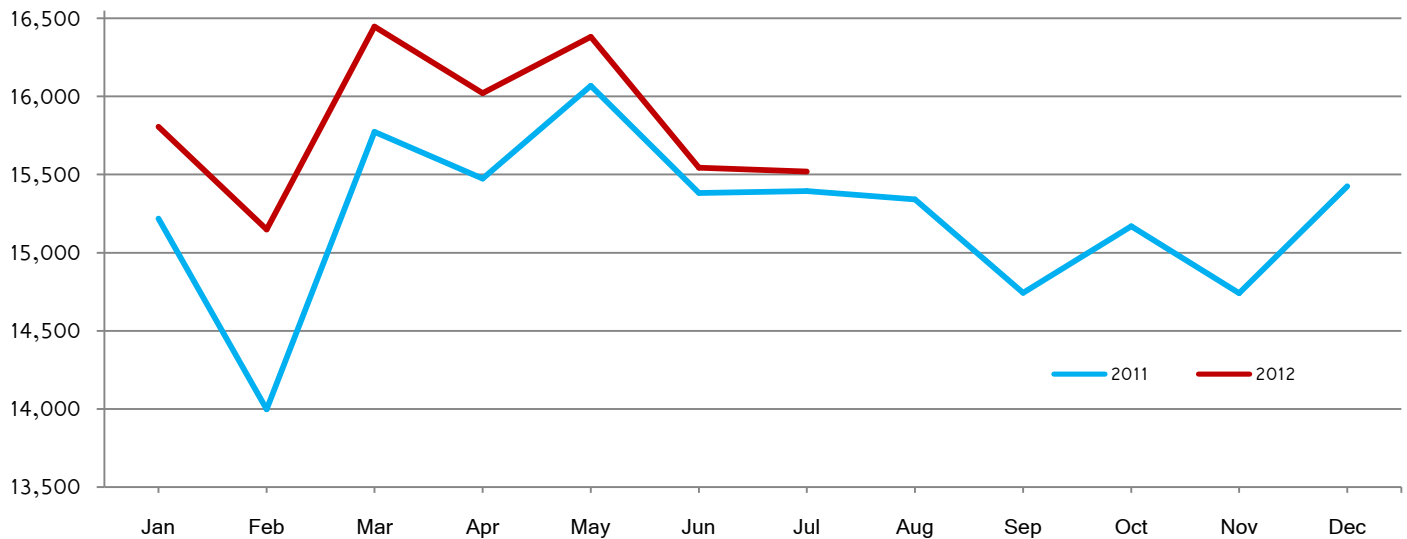
Milk production in the 23 major States during July totaled 15.5 billion pounds, up 0.8 percent from July 2011. June revised production at 15.5 billion pounds, was up 1.1 percent from June 2011. The June revision represented an increase of 2 million pounds or less than 0.1 percent from last month's preliminary production estimate.

Production per cow in the 23 major States averaged 1,826 pounds for July, 6 pounds above July 2011.

The number of milk cows on farms in the 23 major States was 8.50 million head, 41,000 head more than July 2011, but 7,000 head less than June 2012.

Monthly Milk Production – 23 Selected States

Million pounds



Milk Cows and Production by Quarter – United States: 2011-2012

[May not add due to rounding]

Quarter	Milk cows ¹		Milk per cow ²		Milk production ²		
	2011	2012	2011	2012	2011	2012	Change from 2011
	(1,000 head)	(1,000 head)	(pounds)	(pounds)	(million pounds)	(million pounds)	(percent)
January-March	9,168	9,254	5,286	5,513	48,459	51,017	5.3
April-June	9,191	9,257	5,489	5,562	50,448	51,484	2.1
July-September	9,200		5,292		48,684		
October-December	9,216		5,279		48,654		
Annual	9,194		21,345		196,245		

¹ Includes dry cows; excludes heifers not yet fresh.

² Excludes milk sucked by calves.

Milk Cows and Production: By Month, 23 Selected States, 2011-2012

Month	Milk cows ¹		Milk per cow ²		Milk production ²		
	2011	2012	2011	2012	2011	2012	Change from 2011
	(1,000 head)	(1,000 head)	(pounds)	(pounds)	(million pounds)	(million pounds)	(percent)
January	8,405	8,502	1,811	1,859	15,219	15,806	3.9
February	8,408	8,510	1,665	1,780	13,997	15,149	8.2
March	8,425	8,521	1,872	1,930	15,773	16,447	4.3
April	8,431	8,527	1,835	1,879	15,475	16,021	3.5
May	8,447	8,521	1,902	1,923	16,069	16,382	1.9
June	8,450	8,507	1,820	1,827	15,382	15,545	1.1
July	8,459	8,500	1,820	1,826	15,395	15,520	0.8
August	8,463		1,813		15,342		
September	8,466		1,742		14,744		
October	8,475		1,790		15,170		
November	8,475		1,739		14,742		
December	8,485		1,818		15,426		
Annual	8,449		21,627		182,734		

¹ Includes dry cows; excludes heifers not yet fresh.

² Excludes milk sucked by calves.

Estimated Milk Cows and Production by Month – United States: 2011-2012

Month	Milk cows ¹		Milk per cow ²		Milk production ²		
	2011	2012	2011	2012	2011	2012	Change from 2011
	(1,000 head)	(1,000 head)	(pounds)	(pounds)	(million pounds)	(million pounds)	(percent)
January	9,160	9,242	1,790	1,841	16,393	17,011	3.8
February	9,163	9,254	1,645	1,762	15,077	16,305	8.1
March	9,180	9,267	1,851	1,910	16,989	17,701	4.2
April	9,182	9,271	1,814	1,857	16,652	17,220	3.4
May	9,194	9,260	1,879	1,900	17,278	17,592	1.8
June	9,196	9,239	1,796	1,805	16,518	16,672	0.9
July	9,198	9,227	1,792	1,799	16,479	16,600	0.7
August	9,200		1,785		16,422		
September	9,201		1,715		15,783		
October	9,212		1,767		16,278		
November	9,213		1,717		15,820		
December	9,223		1,795		16,556		
Annual	9,194		21,345		196,245		

¹ Includes dry cows; excludes heifers not yet fresh.

² Excludes milk sucked by calves.

Milk Cows and Production – 23 Selected States: July 2011 and 2012

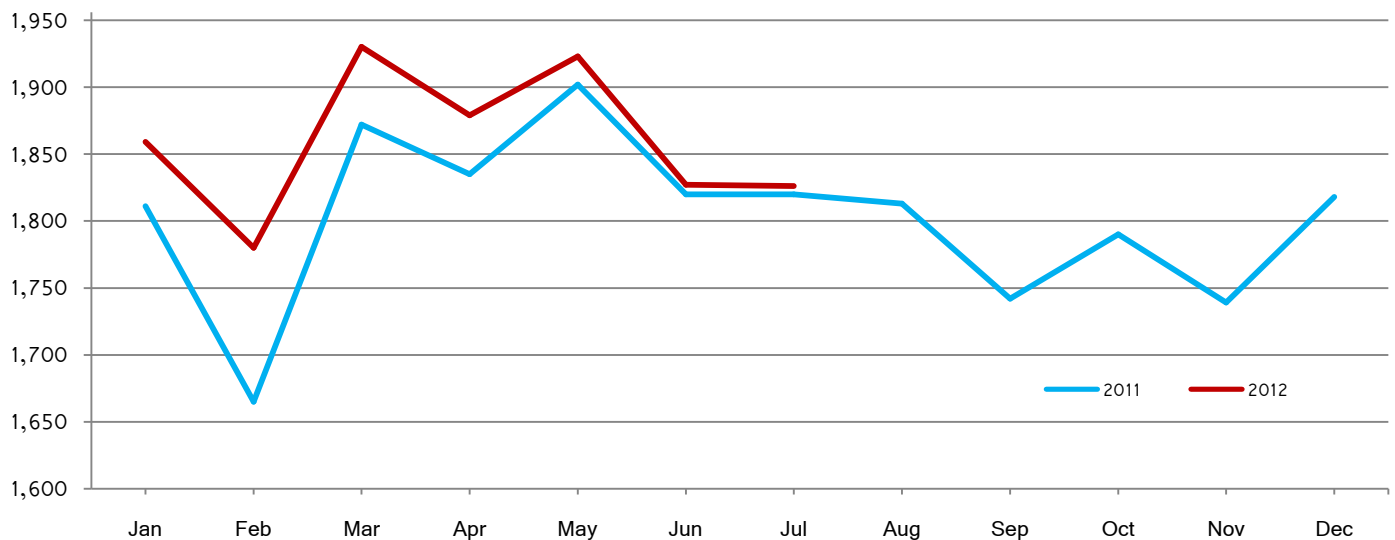
State	Milk cows ¹		Milk per cow ²		Milk production ²		
	2011	2012	2011	2012	2011	2012	Change from 2011
	(1,000 head)	(1,000 head)	(pounds)	(pounds)	(million pounds)	(million pounds)	(percent)
Arizona	186	185	1,885	1,915	351	354	0.9
California	1,772	1,785	1,995	1,960	3,535	3,499	-1.0
Colorado	128	133	2,010	2,045	257	272	5.8
Florida	119	123	1,520	1,520	181	187	3.3
Idaho	582	579	2,050	2,070	1,193	1,199	0.5
Illinois	98	100	1,530	1,550	150	155	3.3
Indiana	171	176	1,690	1,690	289	297	2.8
Iowa	200	203	1,720	1,705	344	346	0.6
Kansas	123	124	1,755	1,780	216	221	2.3
Michigan	366	376	1,945	1,970	712	741	4.1
Minnesota	467	465	1,545	1,570	722	730	1.1
Missouri	96	94	1,110	1,195	107	112	4.7
New Mexico	330	328	2,105	2,060	695	676	-2.7
New York	610	610	1,790	1,825	1,092	1,113	1.9
Ohio	266	270	1,580	1,600	420	432	2.9
Oregon	123	123	1,790	1,755	220	216	-1.8
Pennsylvania	540	535	1,630	1,620	880	867	-1.5
Texas	435	440	1,835	1,770	798	779	-2.4
Utah	88	90	1,840	1,900	162	171	5.6
Vermont	134	133	1,600	1,640	214	218	1.9
Virginia	96	96	1,440	1,450	138	139	0.7
Washington	265	261	2,055	2,020	545	527	-3.3
Wisconsin	1,264	1,271	1,720	1,785	2,174	2,269	4.4
23-State Total	8,459	8,500	1,820	1,826	15,395	15,520	0.8

¹ Includes dry cows; excludes heifers not yet fresh.

² Excludes milk sucked by calves.

Monthly Milk per Cow – 23 Selected States

Pounds



Milk Cows and Production – 23 Selected States: June 2011 and 2012

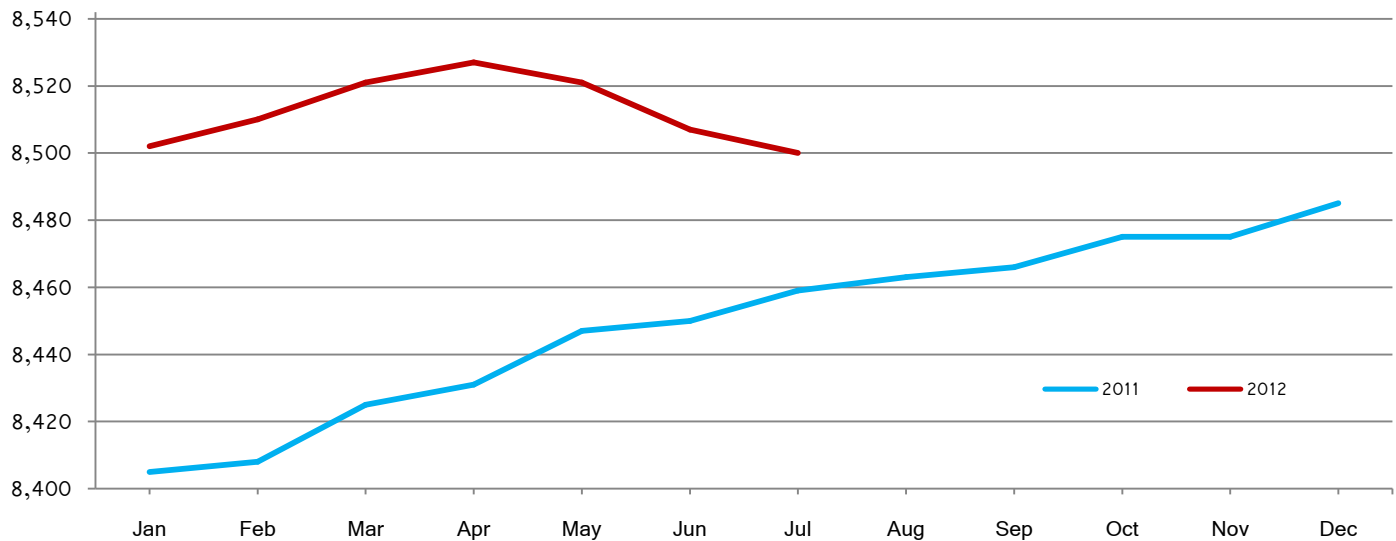
State	Milk cows ¹		Milk per cow ²		Milk production ²		Change from 2011
	2011	2012	2011	2012	2011	2012	
	(1,000 head)	(1,000 head)	(pounds)	(pounds)	(million pounds)	(million pounds)	(percent)
Arizona	186	188	1,980	2,010	368	378	2.7
California	1,769	1,784	1,985	1,975	3,511	3,523	0.3
Colorado	127	133	1,990	2,015	253	268	5.9
Florida	119	123	1,630	1,620	194	199	2.6
Idaho	578	578	1,960	1,990	1,133	1,150	1.5
Illinois	98	100	1,600	1,610	157	161	2.5
Indiana	171	176	1,715	1,745	293	307	4.8
Iowa	204	205	1,775	1,745	362	358	-1.1
Kansas	123	124	1,765	1,790	217	222	2.3
Michigan	364	376	1,960	1,965	713	739	3.6
Minnesota	468	465	1,610	1,600	753	744	-1.2
Missouri	96	94	1,210	1,265	116	119	2.6
New Mexico	328	332	2,100	2,035	689	676	-1.9
New York	610	610	1,770	1,800	1,080	1,098	1.7
Ohio	266	270	1,575	1,630	419	440	5.0
Oregon	122	123	1,730	1,740	211	214	1.4
Pennsylvania	542	535	1,620	1,610	878	861	-1.9
Texas	434	440	1,850	1,785	803	785	-2.2
Utah	88	90	1,770	1,830	156	165	5.8
Vermont	134	133	1,580	1,610	212	214	0.9
Virginia	96	96	1,450	1,460	139	140	0.7
Washington	262	261	2,000	2,000	524	522	-0.4
Wisconsin	1,265	1,271	1,740	1,780	2,201	2,262	2.8
23-State Total	8,450	8,507	1,820	1,827	15,382	15,545	1.1

¹ Includes dry cows; excludes heifers not yet fresh.

² Excludes milk sucked by calves.

Monthly Milk Cows – 23 Selected States

Thousand head



Statistical Methodology

Survey Procedures: Primary data used to determine these estimates were obtained from a sample of producers. Individual States maintain a list of all known milk producers and information on the size of their herd. States use all known sources of producers to ensure that their lists are as complete as possible. Generally, all large producers and a sample of small producers are included in the survey. Questionnaires are mailed to producers near the end of the month to obtain data for the first day of the month. Additional reports are obtained by telephone, as needed, to supplement the mail response. Where feasible, States utilize state and federal administrative data to estimate milk production. This eliminates duplication of data gathering by different government agencies. Indications of milk cow inventory are also obtained in the January and July Cattle Surveys.

Estimation Procedures: State offices prepare these estimates by using a combination of survey indications, historic trends, and any available administrative data. Individual State estimates are reviewed by the Agricultural Statistics Board for reasonableness.

Revision Policy: Milk production, rate per cow, and number of cows are subject to revision the following month for monthly States or the following quarter for the quarterly States. Normally, Federal Market Order sales are the main basis for revisions. However, data for all orders are not available in time for this revision. Estimates are again subject to revisions in February each year based on additional administrative data. In the event that additional changes are necessary, a third revision is possible in February the following year. Estimates are again reviewed after data from the five-year Census of Agriculture are available. No revisions are made after that date.

Reliability: Since all operations with dairy animals are not included in the sample, survey estimates are subject to sampling variability. Survey results are also subject to non-sampling errors such as omissions, duplications, and mistakes in reporting, recording, and processing the data. The effects of these errors cannot be measured directly. They are minimized through rigid quality controls in the data collection process and through a careful review of all reported data for consistency and reasonableness.

To assist users in evaluating the reliability of the estimates in this report, the "Root Mean Square Error" is shown for selected items on the next page. The "Root Mean Square Error" is a statistical measure based on past performance and is computed using the differences between first and final estimates. The "Root Mean Square Error" for the 23 State milk cow inventory estimates over the past 24 months is 0.1 percent. This means that chances are 2 out of 3 that the final estimate will not be above or below the current estimate of 8.50 million head by more than 0.1 percent. Chances are 9 out of 10 that the difference will not exceed 0.1 percent.

Reliability of Monthly Milk Production Estimates

[Based on data for the past 24 months]

Item	Root mean square error	90 percent confidence level	Difference between first and latest estimate				
			Average	Smallest	Largest	Months	
						Below latest	Above latest
	(percent)	(percent)	(1,000)	(1,000)	(1,000)	(number)	(number)
Milk production	0.1	0.2	15	1	50	14	10
All milk cows	0.1	0.1	5	0	12	12	10

Information Contacts

Listed below are the commodity specialists in the Livestock Branch of the National Agricultural Statistics Service to contact for additional information. E-mail inquiries may be sent to nass@nass.usda.gov

Dan Kerestes, Chief, Livestock Branch	(202) 720-3570
Scott Hollis, Head, Livestock Section	(202) 690-2424
Travis Averill – Cattle, Cattle on Feed	(202) 720-3040
Sherry Bertramsen – Livestock Slaughter	(515) 284-4340
Doug Bounds – Hogs and Pigs	(202) 720-3106
Donnie Fike – Dairy Products	(202) 690-3236
Mike Miller – Milk Production and Milk Cows	(202) 720-3278
Alissa Cowell-Mytar – Sheep and Goats	(202) 720-4751

Access to NASS Reports

For your convenience, you may access NASS reports and products the following ways:

- All reports are available electronically, at no cost, on the NASS web site: <http://www.nass.usda.gov>
- Both national and state specific reports are available via a free e-mail subscription. To set-up this free subscription, visit <http://www.nass.usda.gov> and in the “Follow NASS” box under “Receive reports by Email,” click on “National” or “State” to select the reports you would like to receive.
- Printed reports may be purchased from the National Technical Information Service (NTIS) by calling toll-free (800) 999-6779, or (703) 605-6220 if calling from outside the United States or Canada. Accepted methods of payment are Visa, MasterCard, check, or money order.

For more information on NASS surveys and reports, call the NASS Agricultural Statistics Hotline at (800) 727-9540, 7:30 a.m. to 4:00 p.m. ET, or e-mail: nass@nass.usda.gov.

The United States Department of Agriculture (USDA) prohibits discrimination in all its programs and activities on the basis of race, color, national origin, age, disability, and where applicable, sex, marital status, familial status, parental status, religion, sexual orientation, political beliefs, genetic information, reprisal, or because all or a part of an individual's income is derived from any public assistance program. (Not all prohibited bases apply to all programs.) Persons with disabilities who require alternative means for communication of program information (Braille, large print, audiotape, etc.) should contact USDA's TARGET Center at (202) 720-2600 (voice and TDD).

To file a complaint of discrimination, write to USDA, Assistant Secretary for Civil Rights, Office of the Assistant Secretary for Civil Rights, 1400 Independence Avenue, S.W., Stop 9410, Washington, DC 20250-9410, or call toll-free at (866) 632-9992 (English) or (800) 877-8339 (TDD) or (866) 377-8642 (English Federal-relay) or (800) 845-6136 (Spanish Federal-relay). USDA is an equal opportunity provider and employer.