



ISSN: 1949-1557

Released October 19, 2012, by the National Agricultural Statistics Service (NASS), Agricultural Statistics Board, United States Department of Agriculture (USDA).

September Milk Production down 0.5 Percent

Milk production in the 23 major States during September totaled 14.7 billion pounds, down 0.5 percent from September 2011. August revised production at 15.3 billion pounds, was down slightly from August 2011. The August revision represented an increase of 26 million pounds or 0.2 percent from last month's preliminary production estimate.

Production per cow in the 23 major States averaged 1,732 pounds for September, 10 pounds below September 2011.

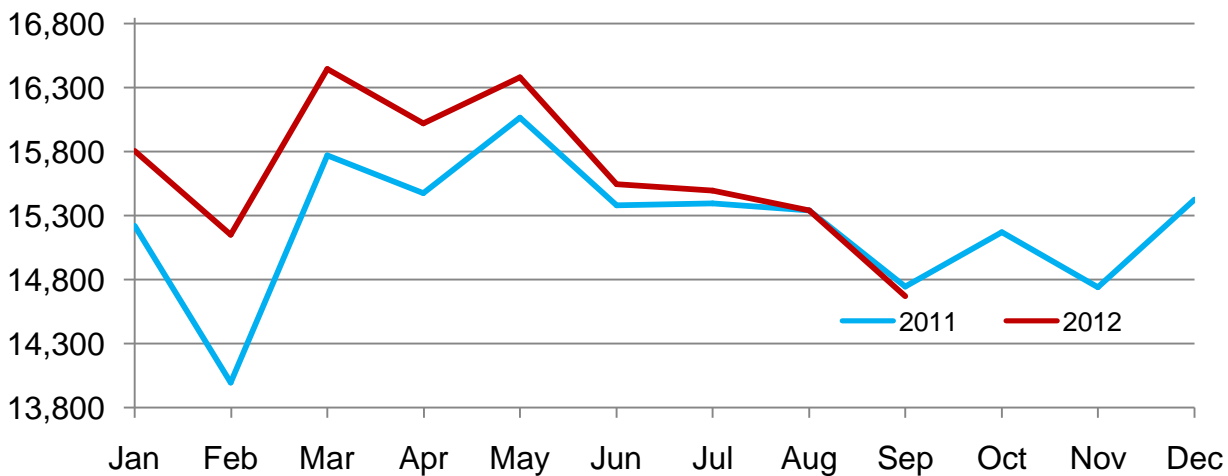
The number of milk cows on farms in the 23 major States was 8.47 million head, 5,000 head more than September 2011, but 25,000 head less than August 2012.

July - September Milk Production up 0.1 Percent

Milk production in the United States during the July - September quarter totaled 48.7 billion pounds, up 0.1 percent from the July - September quarter last year. The average number of milk cows in the United States during the quarter was 9.22 million head, 15,000 head more than the same period last year.

Monthly Milk Production – 23 Selected States

Million pounds



Milk Cows and Production by Quarter – United States: 2011-2012

[May not add due to rounding]

Quarter	Milk cows ¹		Milk per cow ²		Milk production ²		
	2011	2012	2011	2012	2011	2012	Change from 2011
	(1,000 head)	(1,000 head)	(pounds)	(pounds)	(million pounds)	(million pounds)	(percent)
January-March	9,168	9,254	5,286	5,513	48,459	51,017	5.3
April-June	9,191	9,257	5,489	5,562	50,448	51,484	2.1
July-September	9,200	9,215	5,292	5,287	48,684	48,724	0.1
October-December	9,216		5,279		48,654		
Annual	9,194		21,345		196,245		

¹ Includes dry cows; excludes heifers not yet fresh.

² Excludes milk sucked by calves.

Milk Cows and Production By Month – 23 Selected States: 2011-2012

Month	Milk cows ¹		Milk per cow ²		Milk production ²		
	2011	2012	2011	2012	2011	2012	Change from 2011
	(1,000 head)	(1,000 head)	(pounds)	(pounds)	(million pounds)	(million pounds)	(percent)
January	8,405	8,502	1,811	1,859	15,219	15,806	3.9
February	8,408	8,510	1,665	1,780	13,997	15,149	8.2
March	8,425	8,521	1,872	1,930	15,773	16,447	4.3
April	8,431	8,527	1,835	1,879	15,475	16,021	3.5
May	8,447	8,521	1,902	1,923	16,069	16,382	1.9
June	8,450	8,507	1,820	1,827	15,382	15,545	1.1
July	8,459	8,499	1,820	1,823	15,395	15,496	0.7
August	8,463	8,496	1,813	1,805	15,342	15,339	
September	8,466	8,471	1,742	1,732	14,744	14,670	-0.5
October	8,475		1,790		15,170		
November	8,475		1,739		14,742		
December	8,485		1,818		15,426		
Annual	8,449		21,627		182,734		

¹ Includes dry cows; excludes heifers not yet fresh.

² Excludes milk sucked by calves.

Estimated Milk Cows and Production by Month – United States: 2011-2012

Month	Milk cows ¹		Milk per cow ²		Milk production ²		
	2011	2012	2011	2012	2011	2012	Change from 2011
	(1,000 head)	(1,000 head)	(pounds)	(pounds)	(million pounds)	(million pounds)	(percent)
January	9,160	9,242	1,790	1,841	16,393	17,011	3.8
February	9,163	9,254	1,645	1,762	15,077	16,305	8.1
March	9,180	9,267	1,851	1,910	16,989	17,701	4.2
April	9,182	9,271	1,814	1,857	16,652	17,220	3.4
May	9,194	9,260	1,879	1,900	17,278	17,592	1.8
June	9,196	9,239	1,796	1,805	16,518	16,672	0.9
July	9,198	9,228	1,792	1,798	16,479	16,592	0.7
August	9,200	9,222	1,785	1,781	16,422	16,424	
September	9,201	9,195	1,715	1,708	15,783	15,708	-0.5
October	9,212		1,767		16,278		
November	9,213		1,717		15,820		
December	9,223		1,795		16,556		
Annual	9,194		21,345		196,245		

¹ Includes dry cows; excludes heifers not yet fresh.

² Excludes milk sucked by calves.

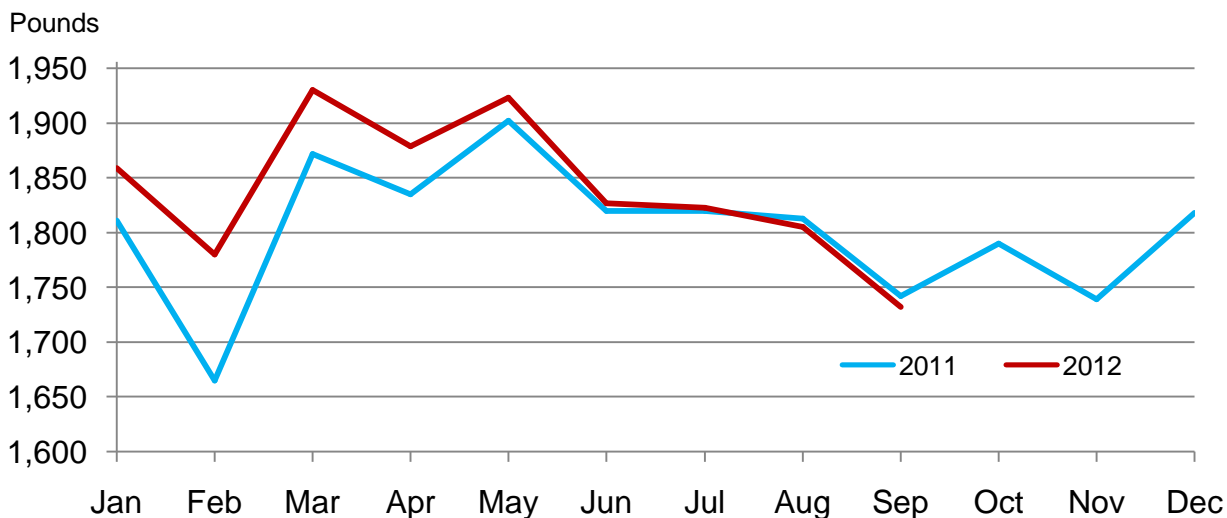
Milk Cows and Production – 23 Selected States: September 2011 and 2012

State	Milk cows ¹		Milk per cow ²		Milk production ²		Change from 2011
	2011	2012	2011	2012	2011	2012	
	(1,000 head)	(1,000 head)	(pounds)	(pounds)	(million pounds)	(million pounds)	(percent)
Arizona	189	181	1,765	1,745	334	316	-5.4
California	1,776	1,779	1,865	1,790	3,312	3,184	-3.9
Colorado	130	135	1,930	1,955	251	264	5.2
Florida	119	122	1,300	1,310	155	160	3.2
Idaho	582	580	1,920	1,970	1,117	1,143	2.3
Illinois	98	100	1,520	1,490	149	149	
Indiana	173	173	1,640	1,650	284	285	0.4
Iowa	198	200	1,750	1,730	347	346	-0.3
Kansas	123	126	1,705	1,740	210	219	4.3
Michigan	367	374	1,870	1,885	686	705	2.8
Minnesota	466	465	1,520	1,535	708	714	0.8
Missouri	95	93	1,110	1,110	105	103	-1.9
New Mexico	331	326	2,020	1,960	669	639	-4.5
New York	610	610	1,700	1,740	1,037	1,061	2.3
Ohio	268	270	1,550	1,570	415	424	2.2
Oregon	122	123	1,680	1,665	205	205	
Pennsylvania	537	533	1,590	1,560	854	831	-2.7
Texas	435	433	1,780	1,705	774	738	-4.7
Utah	88	88	1,760	1,760	155	155	
Vermont	134	133	1,515	1,550	203	206	1.5
Virginia	96	95	1,405	1,390	135	132	-2.2
Washington	265	261	1,945	1,935	515	505	-1.9
Wisconsin	1,264	1,271	1,680	1,720	2,124	2,186	2.9
23-State Total	8,466	8,471	1,742	1,732	14,744	14,670	-0.5

¹ Includes dry cows; excludes heifers not yet fresh.

² Excludes milk sucked by calves.

Monthly Milk per Cow – 23 Selected States



Milk Cows and Production – 23 Selected States: August 2011 and 2012

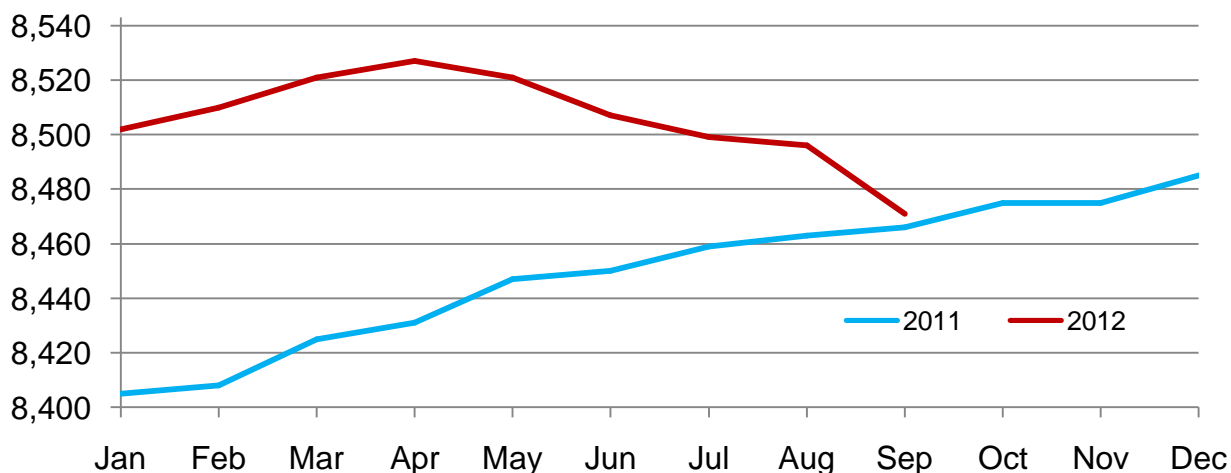
State	Milk cows ¹		Milk per cow ²		Milk production ²		Change from 2011
	2011	2012	2011	2012	2011	2012	
	(1,000 head)	(1,000 head)	(pounds)	(pounds)	(million pounds)	(million pounds)	(percent)
Arizona	187	184	1,815	1,770	339	326	-3.8
California	1,773	1,782	1,975	1,855	3,502	3,306	-5.6
Colorado	129	134	2,000	2,050	258	275	6.6
Florida	119	123	1,400	1,410	167	173	3.6
Idaho	582	580	2,030	2,070	1,181	1,201	1.7
Illinois	98	100	1,530	1,560	150	156	4.0
Indiana	173	176	1,690	1,725	292	304	4.1
Iowa	200	203	1,770	1,790	354	363	2.5
Kansas	123	126	1,750	1,795	215	226	5.1
Michigan	366	376	1,940	1,990	710	748	5.4
Minnesota	467	465	1,570	1,620	733	753	2.7
Missouri	95	94	1,105	1,120	105	105	
New Mexico	330	328	2,065	2,015	681	661	-2.9
New York	610	610	1,785	1,810	1,089	1,104	1.4
Ohio	267	270	1,590	1,620	425	437	2.8
Oregon	123	123	1,760	1,740	216	214	-0.9
Pennsylvania	539	535	1,640	1,625	884	869	-1.7
Texas	435	437	1,795	1,750	781	765	-2.0
Utah	88	89	1,830	1,850	161	165	2.5
Vermont	134	133	1,580	1,610	212	214	0.9
Virginia	96	96	1,460	1,440	140	138	-1.4
Washington	265	261	2,040	2,005	541	523	-3.3
Wisconsin	1,264	1,271	1,745	1,820	2,206	2,313	4.9
23-State Total	8,463	8,496	1,813	1,805	15,342	15,339	

¹ Includes dry cows; excludes heifers not yet fresh.

² Excludes milk sucked by calves.

Monthly Milk Cows – 23 Selected States

Thousand head



Milk Cows and Production – States and United States: Revised April-June 2011 and 2012

[May not add due to rounding]

State	April-June milk cows ¹		April-June milk production ²		Change from 2011
	2011	2012	2011	2012	
	(1,000 head)	(1,000 head)	(million pounds)	(million pounds)	(percent)
Alabama	11.0	10.0	40.0	37.0	-7.5
Alaska	0.5	0.4	1.7	1.4	-17.6
Arizona	186.0	192.0	1,163.0	1,214.0	4.4
Arkansas	12.0	11.0	40.0	38.0	-5.0
California	1,767.0	1,784.0	10,705.0	10,897.0	1.8
Colorado	126.0	132.0	760.0	814.0	7.1
Connecticut	18.5	18.5	93.0	93.0	
Delaware	5.0	5.0	23.5	24.8	5.5
Florida	119.0	123.0	606.0	638.0	5.3
Georgia	80.0	80.0	382.0	398.0	4.2
Hawaii	1.9	2.0	7.3	7.6	4.1
Idaho	577.0	578.0	3,354.0	3,422.0	2.0
Illinois	98.0	100.0	489.0	506.0	3.5
Indiana	171.0	176.0	910.0	955.0	4.9
Iowa	207.0	206.0	1,121.0	1,124.0	0.3
Kansas	122.0	124.0	663.0	689.0	3.9
Kentucky	77.0	74.0	296.0	295.0	-0.3
Louisiana	18.0	18.0	61.0	60.0	-1.6
Maine	32.0	33.0	152.0	158.0	3.9
Maryland	52.0	51.0	251.0	252.0	0.4
Massachusetts	13.0	12.0	58.0	56.0	-3.4
Michigan	363.0	376.0	2,164.0	2,260.0	4.4
Minnesota	468.0	465.0	2,299.0	2,291.0	-0.3
Mississippi	14.0	14.0	55.0	54.0	-1.8
Missouri	96.0	94.0	378.0	386.0	2.1
Montana	14.0	14.0	72.0	76.0	5.6
Nebraska	57.0	56.0	301.0	300.0	-0.3
Nevada	29.0	29.0	170.0	168.0	-1.2
New Hampshire	14.5	14.0	74.0	72.0	-2.7
New Jersey	8.0	7.0	36.0	33.0	-8.3
New Mexico	327.0	335.0	2,095.0	2,116.0	1.0
New York	610.0	610.0	3,285.0	3,370.0	2.6
North Carolina	45.0	46.0	234.0	245.0	4.7
North Dakota	19.0	18.0	88.0	87.0	-1.1
Ohio	267.0	271.0	1,303.0	1,371.0	5.2
Oklahoma	53.0	49.0	244.0	225.0	-7.8
Oregon	121.0	123.0	634.0	649.0	2.4
Pennsylvania	543.0	536.0	2,735.0	2,689.0	-1.7
Rhode Island	1.1	1.1	5.2	5.0	-3.8
South Carolina	16.0	15.5	74.0	74.0	
South Dakota	92.0	93.0	480.0	494.0	2.9
Tennessee	49.0	50.0	212.0	210.0	-0.9
Texas	430.0	440.0	2,460.0	2,475.0	0.6
Utah	87.0	91.0	464.0	498.0	7.3
Vermont	135.0	133.0	650.0	653.0	0.5
Virginia	96.0	96.0	443.0	444.0	0.2
Washington	260.0	263.0	1,569.0	1,600.0	2.0
West Virginia	10.0	10.0	40.0	41.0	2.5
Wisconsin	1,266.0	1,271.0	6,676.0	6,887.0	3.2
Wyoming	6.0	6.0	31.5	31.3	-0.6
United States	9,191.0	9,257.0	50,448.0	51,484.0	2.1

¹ Includes dry cows, excludes heifers not yet fresh.

² Excludes milk sucked by calves.

Milk Cows and Production – States and United States: Preliminary July-September 2011 and 2012

[May not add due to rounding]

State	July-September milk cows ¹		July-September milk production ²		Change from 2011
	2011	2012	2011	2012	
	(1,000 head)	(1,000 head)	(million pounds)	(million pounds)	(percent)
Alabama	10.0	9.5	30.0	29.0	-3.3
Alaska	0.5	0.4	1.7	1.4	-17.6
Arizona	187.0	183.0	1,024.0	996.0	-2.7
Arkansas	11.0	10.0	30.0	28.0	-6.7
California	1,774.0	1,782.0	10,349.0	9,989.0	-3.5
Colorado	129.0	134.0	766.0	812.0	6.0
Connecticut	18.5	18.0	88.0	86.0	-2.3
Delaware	5.0	5.0	21.7	22.0	1.4
Florida	119.0	123.0	503.0	520.0	3.4
Georgia	78.0	80.0	330.0	335.0	1.5
Hawaii	1.9	2.0	6.8	7.0	2.9
Idaho	582.0	579.0	3,491.0	3,529.0	1.1
Illinois	98.0	100.0	449.0	460.0	2.4
Indiana	172.0	175.0	865.0	886.0	2.4
Iowa	199.0	202.0	1,045.0	1,058.0	1.2
Kansas	123.0	125.0	641.0	666.0	3.9
Kentucky	75.0	73.0	245.0	253.0	3.3
Louisiana	18.0	17.0	48.0	45.0	-6.3
Maine	32.0	32.0	150.0	152.0	1.3
Maryland	52.0	51.0	230.0	235.0	2.2
Massachusetts	12.0	11.5	53.0	52.0	-1.9
Michigan	366.0	375.0	2,108.0	2,194.0	4.1
Minnesota	467.0	465.0	2,163.0	2,202.0	1.8
Mississippi	14.0	14.0	43.0	43.0	
Missouri	95.0	94.0	317.0	318.0	0.3
Montana	14.0	14.0	74.0	75.0	1.4
Nebraska	57.0	56.0	288.0	291.0	1.0
Nevada	29.0	28.0	171.0	161.0	-5.8
New Hampshire	14.0	13.5	69.0	67.0	-2.9
New Jersey	7.5	7.0	33.0	32.0	-3.0
New Mexico	330.0	327.0	2,045.0	1,976.0	-3.4
New York	610.0	610.0	3,218.0	3,278.0	1.9
North Carolina	45.0	46.0	213.0	220.0	3.3
North Dakota	19.0	18.0	85.0	87.0	2.4
Ohio	267.0	270.0	1,260.0	1,290.0	2.4
Oklahoma	52.0	48.0	215.0	192.0	-10.7
Oregon	123.0	123.0	641.0	637.0	-0.6
Pennsylvania	539.0	534.0	2,618.0	2,567.0	-1.9
Rhode Island	1.1	1.0	4.9	4.3	-12.2
South Carolina	16.0	15.0	60.0	59.0	-1.7
South Dakota	90.0	92.0	461.0	487.0	5.6
Tennessee	49.0	49.0	182.0	184.0	1.1
Texas	435.0	437.0	2,353.0	2,282.0	-3.0
Utah	88.0	89.0	478.0	491.0	2.7
Vermont	134.0	133.0	629.0	638.0	1.4
Virginia	96.0	96.0	413.0	407.0	-1.5
Washington	265.0	261.0	1,601.0	1,554.0	-2.9
West Virginia	10.0	10.0	39.0	39.0	
Wisconsin	1,264.0	1,271.0	6,504.0	6,755.0	3.9
Wyoming	6.0	6.0	31.2	31.8	1.9
United States	9,200.0	9,215.0	48,684.0	48,724.0	0.1

¹ Includes dry cows, excludes heifers not yet fresh.

² Excludes milk sucked by calves.

Statistical Methodology

Survey Procedures: Primary data used to determine these estimates were obtained from a sample of producers. Individual States maintain a list of all known milk producers and information on the size of their herd. States use all known sources of producers to ensure that their lists are as complete as possible. Generally, all large producers and a sample of small producers are included in the survey. Questionnaires are mailed to producers near the end of the month to obtain data for the first day of the month. Additional reports are obtained by telephone, as needed, to supplement the mail response. Where feasible, States utilize state and federal administrative data to estimate milk production. This eliminates duplication of data gathering by different government agencies. Indications of milk cow inventory are also obtained in the January and July Cattle Surveys.

Estimation Procedures: State offices prepare these estimates by using a combination of survey indications, historic trends, and any available administrative data. Individual State estimates are reviewed by the Agricultural Statistics Board for reasonableness.

Revision Policy: Milk production, rate per cow, and number of cows are subject to revision the following month for monthly States or the following quarter for the quarterly States. Normally, Federal Market Order sales are the main basis for revisions. However, data for all orders are not available in time for this revision. Estimates are again subject to revisions in February each year based on additional administrative data. In the event that additional changes are necessary, a third revision is possible in February the following year. Estimates are again reviewed after data from the five-year Census of Agriculture are available. No revisions are made after that date.

Reliability: Since all operations with dairy animals are not included in the sample, survey estimates are subject to sampling variability. Survey results are also subject to non-sampling errors such as omissions, duplications, and mistakes in reporting, recording, and processing the data. The effects of these errors cannot be measured directly. They are minimized through rigid quality controls in the data collection process and through a careful review of all reported data for consistency and reasonableness.

To assist users in evaluating the reliability of the estimates in this report, the "Root Mean Square Error" is shown for selected items on the next page. The "Root Mean Square Error" is a statistical measure based on past performance and is computed using the differences between first and final estimates. The "Root Mean Square Error" for milk cow inventory estimates over the past 20 quarters is 0.3 percent. This means that chances are 2 out of 3 that the final estimate will not be above or below the current estimate of 9.22 million head by more than 0.3 percent. Chances are 9 out of 10 that the difference will not exceed 0.4 percent.

Reliability of Quarterly Milk Production Estimates

[Based on data for the past 20 quarters]

Item	Root mean square error	90 percent confidence level	Difference between first and latest estimate				
			Average	Smallest	Largest	Quarters	
						Below latest	Above latest
	(percent)	(percent)	(1,000)	(1,000)	(1,000)	(number)	(number)
Milk production	0.1	0.2	37	0	96	16	3
All milk cows	0.3	0.4	16	0	52	13	2

Information Contacts

Listed below are the commodity specialists in the Livestock Branch of the National Agricultural Statistics Service to contact for additional information. E-mail inquiries may be sent to nass@nass.usda.gov

Dan Kerestes, Chief, Livestock Branch	(202) 720-3570
Scott Hollis, Head, Livestock Section	(202) 690-2424
Travis Averill – Cattle, Cattle on Feed	(202) 720-3040
Sherry Bertramsen – Livestock Slaughter	(515) 284-4340
Doug Bounds – Hogs and Pigs	(202) 720-3106
Donnie Fike – Dairy Products	(202) 690-3236
Mike Miller – Milk Production and Milk Cows	(202) 720-3278
Alissa Cowell-Mytar – Sheep and Goats	(202) 720-4751

Access to NASS Reports

For your convenience, you may access NASS reports and products the following ways:

- All reports are available electronically, at no cost, on the NASS web site: <http://www.nass.usda.gov>
- Both national and state specific reports are available via a free e-mail subscription. To set-up this free subscription, visit <http://www.nass.usda.gov> and in the “Follow NASS” box under “Receive reports by Email,” click on “National” or “State” to select the reports you would like to receive.

For more information on NASS surveys and reports, call the NASS Agricultural Statistics Hotline at (800) 727-9540, 7:30 a.m. to 4:00 p.m. ET, or e-mail: nass@nass.usda.gov.

The United States Department of Agriculture (USDA) prohibits discrimination in all its programs and activities on the basis of race, color, national origin, age, disability, and where applicable, sex, marital status, familial status, parental status, religion, sexual orientation, political beliefs, genetic information, reprisal, or because all or a part of an individual's income is derived from any public assistance program. (Not all prohibited bases apply to all programs.) Persons with disabilities who require alternative means for communication of program information (Braille, large print, audiotape, etc.) should contact USDA's TARGET Center at (202) 720-2600 (voice and TDD).

To file a complaint of discrimination, write to USDA, Assistant Secretary for Civil Rights, Office of the Assistant Secretary for Civil Rights, 1400 Independence Avenue, S.W., Stop 9410, Washington, DC 20250-9410, or call toll-free at (866) 632-9992 (English) or (800) 877-8339 (TDD) or (866) 377-8642 (English Federal-relay) or (800) 845-6136 (Spanish Federal-relay). USDA is an equal opportunity provider and employer.