



# Milk Production

ISSN: 1949-1557

Released January 23, 2013, by the National Agricultural Statistics Service (NASS), Agricultural Statistics Board, United States Department of Agriculture (USDA).

## December Milk Production up 1.7 Percent

**Milk production** in the 23 major States during December totaled 15.7 billion pounds, up 1.7 percent from December 2011. November revised production at 14.9 billion pounds, was up 1.3 percent from November 2011. The November revision represented an increase of 31 million pounds or 0.2 percent from last month's preliminary production estimate.

**Production per cow** in the 23 major States averaged 1,848 pounds for December, 30 pounds above December 2011.

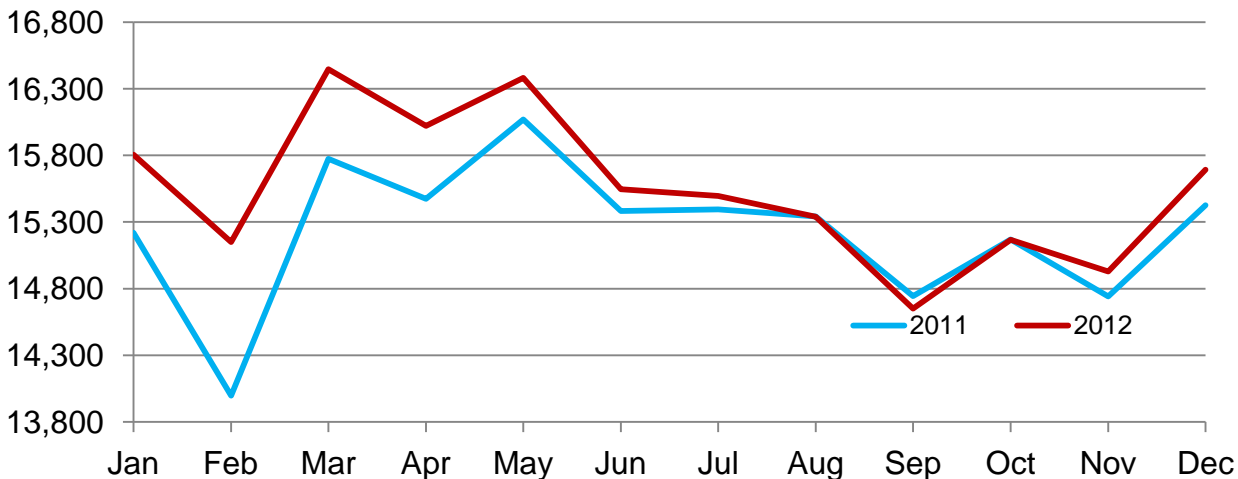
**The number of milk cows** on farms in the 23 major States was 8.49 million head, 5,000 head more than December 2011, and 16,000 head more than November 2012.

## October - December Milk Production up 0.9 Percent

Milk production in the United States during the October - December quarter totaled 49.1 billion pounds, up 0.9 percent from the October - December quarter last year. The average number of milk cows in the United States during the quarter was 9.20 million head, 17,000 head less than the same period last year.

## Monthly Milk Production - 23 Selected States

Million Pounds



## Milk Cows and Production by Quarter – United States: 2011-2012

[Totals may not add due to rounding]

Quarter	Milk cows <sup>1</sup>		Milk per cow <sup>2</sup>		Milk production <sup>2</sup>		
	2011	2012	2011	2012	2011	2012	Change from 2011
	(1,000 head)	(1,000 head)	(pounds)	(pounds)	(million pounds)	(million pounds)	(percent)
January-March .....	9,168	9,254	5,286	5,513	48,459	51,017	5.3
April-June .....	9,191	9,257	5,489	5,562	50,448	51,484	2.1
July-September .....	9,200	9,214	5,292	5,284	48,684	48,690	-
October-December .....	9,216	9,199	5,279	5,337	48,654	49,093	0.9
Annual .....	9,194	9,231	21,345	21,697	196,245	200,284	2.1

- Represents zero.

<sup>1</sup> Includes dry cows; excludes heifers not yet fresh.

<sup>2</sup> Excludes milk sucked by calves.

## Milk Cows and Production by Month – 23 Selected States: 2011-2012

Month	Milk cows <sup>1</sup>		Milk per cow <sup>2</sup>		Milk production <sup>2</sup>		
	2011	2012	2011	2012	2011	2012	Change from 2011
	(1,000 head)	(1,000 head)	(pounds)	(pounds)	(million pounds)	(million pounds)	(percent)
January .....	8,405	8,502	1,811	1,859	15,219	15,806	3.9
February .....	8,408	8,510	1,665	1,780	13,997	15,149	8.2
March .....	8,425	8,521	1,872	1,930	15,773	16,447	4.3
April .....	8,431	8,527	1,835	1,879	15,475	16,021	3.5
May .....	8,447	8,521	1,902	1,923	16,069	16,382	1.9
June .....	8,450	8,507	1,820	1,827	15,382	15,545	1.1
July .....	8,459	8,499	1,820	1,823	15,395	15,496	0.7
August .....	8,463	8,496	1,813	1,805	15,342	15,339	-
September .....	8,466	8,473	1,742	1,729	14,744	14,651	-0.6
October .....	8,475	8,464	1,790	1,792	15,170	15,166	-
November .....	8,475	8,474	1,739	1,762	14,742	14,929	1.3
December .....	8,485	8,490	1,818	1,848	15,426	15,693	1.7
Annual .....	8,449	8,499	21,627	21,958	182,734	186,624	2.1

- Represents zero.

<sup>1</sup> Includes dry cows; excludes heifers not yet fresh.

<sup>2</sup> Excludes milk sucked by calves.

## Estimated Milk Cows and Production by Month – United States: 2011-2012

Month	Milk cows <sup>1</sup>		Milk per cow <sup>2</sup>		Milk production <sup>2</sup>		
	2011	2012	2011	2012	2011	2012	Change from 2011
	(1,000 head)	(1,000 head)	(pounds)	(pounds)	(million pounds)	(million pounds)	(percent)
January .....	9,160	9,242	1,790	1,841	16,393	17,011	3.8
February .....	9,163	9,254	1,645	1,762	15,077	16,305	8.1
March .....	9,180	9,267	1,851	1,910	16,989	17,701	4.2
April .....	9,182	9,271	1,814	1,857	16,652	17,220	3.4
May .....	9,194	9,260	1,879	1,900	17,278	17,592	1.8
June .....	9,196	9,239	1,796	1,805	16,518	16,672	0.9
July .....	9,198	9,226	1,792	1,798	16,479	16,588	0.7
August .....	9,200	9,221	1,785	1,781	16,422	16,419	-
September .....	9,201	9,196	1,715	1,705	15,783	15,683	-0.6
October .....	9,212	9,186	1,767	1,770	16,278	16,260	-0.1
November .....	9,213	9,197	1,717	1,741	15,820	16,008	1.2
December .....	9,223	9,213	1,795	1,826	16,556	16,825	1.6
Annual .....	9,194	9,231	21,345	21,697	196,245	200,284	2.1

- Represents zero.

<sup>1</sup> Includes dry cows; excludes heifers not yet fresh.

<sup>2</sup> Excludes milk sucked by calves.

## Milk Cows and Production – 23 Selected States: December 2011 and 2012

State	Milk cows <sup>1</sup>		Milk per cow <sup>2</sup>		Milk production <sup>2</sup>		Change from 2011
	2011	2012	2011	2012	2011	2012	
	(1,000 head)	(1,000 head)	(pounds)	(pounds)	(million pounds)	(million pounds)	(percent)
Arizona .....	191	185	1,970	2,025	376	375	-0.3
California .....	1,779	1,779	1,965	1,920	3,496	3,416	-2.3
Colorado .....	131	135	1,955	2,015	256	272	6.3
Florida .....	120	122	1,630	1,610	196	196	-
Idaho .....	580	580	1,910	1,930	1,108	1,119	1.0
Illinois .....	99	100	1,680	1,690	166	169	1.8
Indiana .....	174	174	1,740	1,820	303	317	4.6
Iowa .....	203	205	1,850	1,890	376	387	2.9
Kansas .....	123	131	1,780	1,840	219	241	10.0
Michigan .....	370	377	1,950	2,020	722	762	5.5
Minnesota .....	465	465	1,620	1,690	753	786	4.4
Missouri .....	93	93	1,240	1,230	115	114	-0.9
New Mexico .....	334	321	2,025	2,100	676	674	-0.3
New York .....	610	610	1,755	1,830	1,071	1,116	4.2
Ohio .....	270	270	1,625	1,690	439	456	3.9
Oregon .....	123	123	1,660	1,660	204	204	-
Pennsylvania .....	539	534	1,650	1,685	889	900	1.2
Texas .....	435	433	1,860	1,855	809	803	-0.7
Utah .....	89	90	1,800	1,810	160	163	1.9
Vermont .....	133	134	1,595	1,630	212	218	2.8
Virginia .....	96	95	1,530	1,545	147	147	-
Washington .....	263	264	1,950	1,950	513	515	0.4
Wisconsin .....	1,265	1,270	1,755	1,845	2,220	2,343	5.5
23-State Total .....	8,485	8,490	1,818	1,848	15,426	15,693	1.7

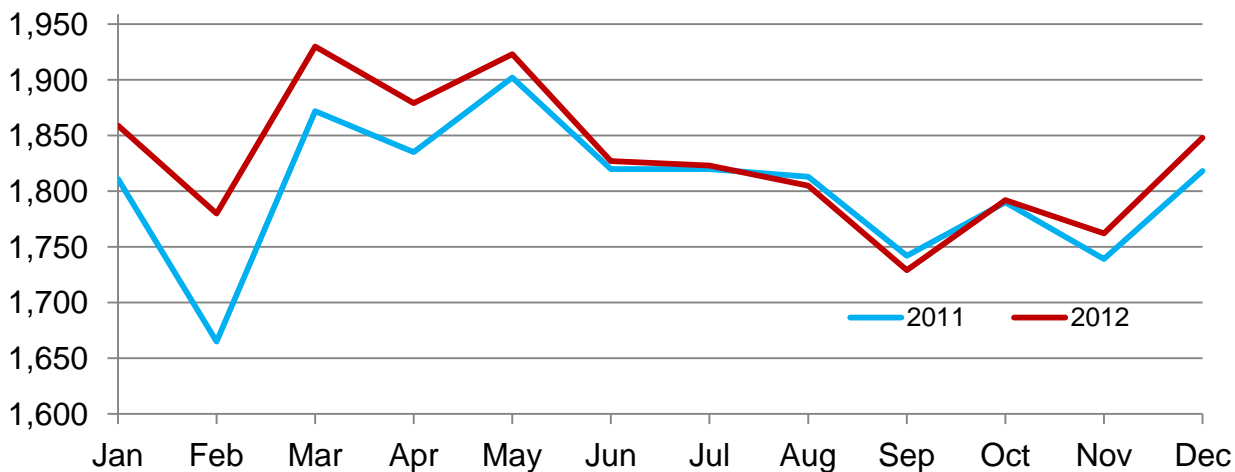
- Represents zero.

<sup>1</sup> Includes dry cows; excludes heifers not yet fresh.

<sup>2</sup> Excludes milk sucked by calves.

## Monthly Milk per Cow - 23 Selected States

Pounds



## Milk Cows and Production – 23 Selected States: November 2011 and 2012

State	Milk cows <sup>1</sup>		Milk per cow <sup>2</sup>		Milk production <sup>2</sup>		Change from 2011
	2011	2012	2011	2012	2011	2012	
	(1,000 head)	(1,000 head)	(pounds)	(pounds)	(million pounds)	(million pounds)	(percent)
Arizona .....	192	180	1,855	1,940	356	349	-2.0
California .....	1,778	1,780	1,880	1,835	3,343	3,266	-2.3
Colorado .....	131	135	1,870	1,935	245	261	6.5
Florida .....	120	122	1,460	1,460	175	178	1.7
Idaho .....	579	578	1,840	1,890	1,065	1,092	2.5
Illinois .....	98	100	1,580	1,580	155	158	1.9
Indiana .....	173	173	1,670	1,730	289	299	3.5
Iowa .....	200	205	1,765	1,790	353	367	4.0
Kansas .....	123	128	1,725	1,770	212	227	7.1
Michigan .....	369	375	1,865	1,915	688	718	4.4
Minnesota .....	465	465	1,520	1,590	707	739	4.5
Missouri .....	94	93	1,190	1,180	112	110	-1.8
New Mexico .....	333	323	2,020	2,000	673	646	-4.0
New York .....	610	610	1,680	1,735	1,025	1,058	3.2
Ohio .....	269	270	1,560	1,625	420	439	4.5
Oregon .....	122	123	1,615	1,600	197	197	-
Pennsylvania .....	538	533	1,580	1,600	850	853	0.4
Texas .....	435	430	1,815	1,770	790	761	-3.7
Utah .....	88	89	1,740	1,750	153	156	2.0
Vermont .....	134	134	1,510	1,545	202	207	2.5
Virginia .....	96	95	1,440	1,445	138	137	-0.7
Washington .....	263	262	1,880	1,880	494	493	-0.2
Wisconsin .....	1,265	1,271	1,660	1,745	2,100	2,218	5.6
23-State Total .....	8,475	8,474	1,739	1,762	14,742	14,929	1.3

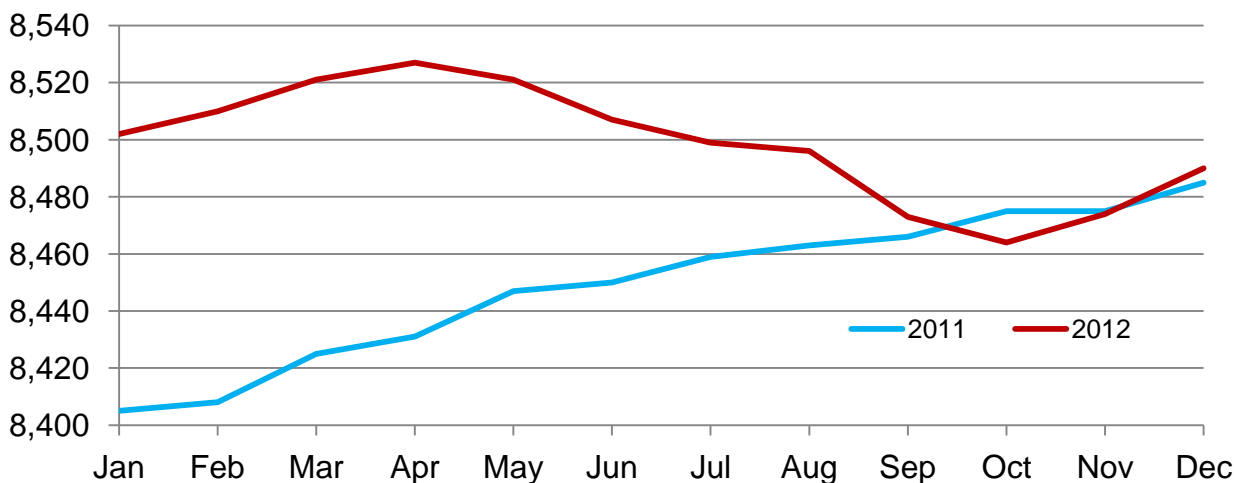
- Represents zero.

<sup>1</sup> Includes dry cows; excludes heifers not yet fresh.

<sup>2</sup> Excludes milk sucked by calves.

## Monthly Milk Cows - 23 Selected States

Thousand Head



## Milk Cows and Production – States and United States: Revised July-September 2011 and 2012

[May not add due to rounding]

State	July-September milk cows <sup>1</sup>		July-September milk production <sup>2</sup>		Change from 2011
	2011	2012	2011	2012	
	(1,000 head)	(1,000 head)	(million pounds)	(million pounds)	(percent)
Alabama .....	10.0	9.5	30.0	28.0	-6.7
Alaska .....	0.5	0.4	1.7	1.4	-17.6
Arizona .....	187.0	183.0	1,024.0	996.0	-2.7
Arkansas .....	11.0	10.0	30.0	28.0	-6.7
California .....	1,774.0	1,782.0	10,349.0	9,989.0	-3.5
Colorado .....	129.0	134.0	766.0	812.0	6.0
Connecticut .....	18.5	18.0	88.0	86.0	-2.3
Delaware .....	5.0	5.0	21.7	22.0	1.4
Florida .....	119.0	123.0	503.0	514.0	2.2
Georgia .....	78.0	80.0	330.0	335.0	1.5
Hawaii .....	1.9	2.0	6.8	7.0	2.9
Idaho .....	582.0	579.0	3,491.0	3,505.0	0.4
Illinois .....	98.0	100.0	449.0	460.0	2.4
Indiana .....	172.0	175.0	865.0	886.0	2.4
Iowa .....	199.0	202.0	1,045.0	1,058.0	1.2
Kansas .....	123.0	125.0	641.0	666.0	3.9
Kentucky .....	75.0	73.0	245.0	253.0	3.3
Louisiana .....	18.0	17.0	48.0	45.0	-6.3
Maine .....	32.0	32.0	150.0	152.0	1.3
Maryland .....	52.0	51.0	230.0	235.0	2.2
Massachusetts .....	12.0	12.0	53.0	53.0	-
Michigan .....	366.0	375.0	2,108.0	2,194.0	4.1
Minnesota .....	467.0	465.0	2,163.0	2,209.0	2.1
Mississippi .....	14.0	14.0	43.0	43.0	-
Missouri .....	95.0	94.0	317.0	318.0	0.3
Montana .....	14.0	14.0	74.0	75.0	1.4
Nebraska .....	57.0	56.0	288.0	289.0	0.3
Nevada .....	29.0	28.0	171.0	161.0	-5.8
New Hampshire .....	14.0	13.5	69.0	67.0	-2.9
New Jersey .....	7.5	7.0	33.0	32.0	-3.0
New Mexico .....	330.0	327.0	2,045.0	1,976.0	-3.4
New York .....	610.0	610.0	3,218.0	3,278.0	1.9
North Carolina .....	45.0	46.0	213.0	218.0	2.3
North Dakota .....	19.0	18.0	85.0	86.0	1.2
Ohio .....	267.0	270.0	1,260.0	1,282.0	1.7
Oklahoma .....	52.0	47.0	215.0	188.0	-12.6
Oregon .....	123.0	123.0	641.0	637.0	-0.6
Pennsylvania .....	539.0	534.0	2,618.0	2,567.0	-1.9
Rhode Island .....	1.1	0.9	4.9	4.3	-12.2
South Carolina .....	16.0	15.0	60.0	57.0	-5.0
South Dakota .....	90.0	92.0	461.0	485.0	5.2
Tennessee .....	49.0	49.0	182.0	182.0	-
Texas .....	435.0	437.0	2,353.0	2,282.0	-3.0
Utah .....	88.0	89.0	478.0	491.0	2.7
Vermont .....	134.0	133.0	629.0	638.0	1.4
Virginia .....	96.0	96.0	413.0	406.0	-1.7
Washington .....	265.0	261.0	1,601.0	1,554.0	-2.9
West Virginia .....	10.0	10.0	39.0	39.0	-
Wisconsin .....	1,264.0	1,271.0	6,504.0	6,768.0	4.1
Wyoming .....	6.0	6.0	31.2	31.8	1.9
United States .....	9,200.0	9,214.0	48,684.0	48,690.0	-

- Represents zero.

<sup>1</sup> Includes dry cows, excludes heifers not yet fresh.

<sup>2</sup> Excludes milk sucked by calves.

## Milk Cows and Production – States and United States: Preliminary October-December 2011 and 2012

[May not add due to rounding]

State	October-December milk cows <sup>1</sup>		October-December milk production <sup>2</sup>		Change from 2011
	2011	2012	2011	2012	
	(1,000 head)	(1,000 head)	(million pounds)	(million pounds)	(percent)
Alabama .....	10.0	9.0	32.0	29.0	-9.4
Alaska .....	0.5	0.4	1.7	1.2	-29.4
Arizona .....	192.0	182.0	1,090.0	1,066.0	-2.2
Arkansas .....	11.0	9.5	33.0	29.0	-12.1
California .....	1,778.0	1,779.0	10,267.0	9,989.0	-2.7
Colorado .....	131.0	135.0	757.0	804.0	6.2
Connecticut .....	18.5	18.0	88.0	86.0	-2.3
Delaware .....	5.0	4.7	22.0	22.0	-
Florida .....	120.0	122.0	533.0	534.0	0.2
Georgia .....	78.0	80.0	358.0	355.0	-0.8
Hawaii .....	1.9	2.1	6.4	6.6	3.1
Idaho .....	580.0	578.0	3,294.0	3,348.0	1.6
Illinois .....	98.0	100.0	478.0	485.0	1.5
Indiana .....	173.0	173.0	890.0	919.0	3.3
Iowa .....	201.0	204.0	1,088.0	1,118.0	2.8
Kansas .....	123.0	128.0	648.0	696.0	7.4
Kentucky .....	75.0	73.0	261.0	268.0	2.7
Louisiana .....	18.0	16.0	54.0	49.0	-9.3
Maine .....	32.0	32.0	149.0	150.0	0.7
Maryland .....	52.0	51.0	236.0	238.0	0.8
Massachusetts .....	12.0	12.5	52.0	55.0	5.8
Michigan .....	369.0	375.0	2,120.0	2,209.0	4.2
Minnesota .....	465.0	465.0	2,185.0	2,271.0	3.9
Mississippi .....	14.0	14.0	47.0	46.0	-2.1
Missouri .....	94.0	93.0	339.0	334.0	-1.5
Montana .....	14.0	14.0	73.0	74.0	1.4
Nebraska .....	57.0	55.0	294.0	296.0	0.7
Nevada .....	29.0	29.0	163.0	160.0	-1.8
New Hampshire .....	14.0	13.5	68.0	65.0	-4.4
New Jersey .....	7.5	7.0	32.0	31.0	-3.1
New Mexico .....	333.0	323.0	2,046.0	1,976.0	-3.4
New York .....	610.0	610.0	3,148.0	3,257.0	3.5
North Carolina .....	45.0	46.0	225.0	226.0	0.4
North Dakota .....	18.0	18.0	83.0	86.0	3.6
Ohio .....	269.0	270.0	1,288.0	1,341.0	4.1
Oklahoma .....	52.0	46.0	227.0	201.0	-11.5
Oregon .....	122.0	123.0	609.0	608.0	-0.2
Pennsylvania .....	538.0	533.0	2,611.0	2,622.0	0.4
Rhode Island .....	1.1	0.9	4.8	4.1	-14.6
South Carolina .....	16.0	15.5	69.0	65.0	-5.8
South Dakota .....	90.0	92.0	469.0	501.0	6.8
Tennessee .....	50.0	49.0	200.0	191.0	-4.5
Texas .....	435.0	431.0	2,412.0	2,336.0	-3.2
Utah .....	88.0	89.0	470.0	478.0	1.7
Vermont .....	134.0	134.0	623.0	637.0	2.2
Virginia .....	96.0	95.0	424.0	423.0	-0.2
Washington .....	264.0	262.0	1,530.0	1,520.0	-0.7
West Virginia .....	10.0	10.0	38.0	38.0	-
Wisconsin .....	1,265.0	1,271.0	6,488.0	6,817.0	5.1
Wyoming .....	6.0	6.0	30.0	32.0	6.7
United States .....	9,216.0	9,199.0	48,654.0	49,093.0	0.9

- Represents zero.

<sup>1</sup> Includes dry cows, excludes heifers not yet fresh.

<sup>2</sup> Excludes milk sucked by calves.

## Statistical Methodology

**Survey Procedures:** Primary data used to determine these estimates were obtained from a sample of producers. Individual States maintain a list of all known milk producers and information on the size of their herd. States use all known sources of producers to ensure that their lists are as complete as possible. Generally, all large producers and a sample of small producers are included in the survey. Questionnaires are mailed to producers near the end of the month to obtain data for the first day of the month. Additional reports are obtained by telephone, as needed, to supplement the mail response. Where feasible, States utilize state and federal administrative data to estimate milk production. This eliminates duplication of data gathering by different government agencies. Indications of milk cow inventory are also obtained in the January and July Cattle Surveys.

**Estimation Procedures:** State offices prepare these estimates by using a combination of survey indications, historic trends, and any available administrative data. Individual State estimates are reviewed by the Agricultural Statistics Board for reasonableness.

**Revision Policy:** Milk production, rate per cow, and number of cows are subject to revision the following month for monthly States or the following quarter for the quarterly States. Normally, Federal Market Order sales are the main basis for revisions. However, data for all orders are not available in time for this revision. Estimates are again subject to revisions in February each year based on additional administrative data. In the event that additional changes are necessary, a third revision is possible in February the following year. Estimates are again reviewed after data from the five-year Census of Agriculture are available. No revisions are made after that date.

**Reliability:** Since all operations with dairy animals are not included in the sample, survey estimates are subject to sampling variability. Survey results are also subject to non-sampling errors such as omissions, duplications, and mistakes in reporting, recording, and processing the data. The effects of these errors cannot be measured directly. They are minimized through rigid quality controls in the data collection process and through a careful review of all reported data for consistency and reasonableness.

To assist users in evaluating the reliability of the estimates in this report, the "Root Mean Square Error" is shown for selected items on the next page. The "Root Mean Square Error" is a statistical measure based on past performance and is computed using the differences between first and final estimates. The "Root Mean Square Error" for milk cow inventory estimates over the past 20 quarters is 0.2 percent. This means that chances are 2 out of 3 that the final estimate will not be above or below the current estimate of 9.20 million head by more than 0.2 percent. Chances are 9 out of 10 that the difference will not exceed 0.4 percent.

## Reliability of Quarterly Milk Production Estimates

[Based on data for the past 20 quarters]

Item	Root mean square error	90 percent confidence level	Difference between first and latest estimate				
			Average	Smallest	Largest	Quarters	
						Below latest	Above latest
	(percent)	(percent)	(1,000)	(1,000)	(1,000)	(number)	(number)
Milk production .....	0.1	0.2	37	0	96	17	2
All milk cows .....	0.2	0.4	14	0	52	12	2

## Information Contacts

Listed below are the commodity specialists in the Livestock Branch of the National Agricultural Statistics Service to contact for additional information. E-mail inquiries may be sent to [nass@nass.usda.gov](mailto:nass@nass.usda.gov)

Dan Kerestes, Chief, Livestock Branch ..... (202) 720-3570

Scott Hollis, Head, Livestock Section ..... (202) 690-2424

    Travis Averill – Cattle, Cattle on Feed ..... (202) 720-3040

    Sherry Bertramsen – Livestock Slaughter ..... (515) 284-4340

    Doug Bounds – Hogs and Pigs ..... (202) 720-3106

    Donnie Fike – Dairy Products ..... (202) 690-3236

    Mike Miller – Milk Production and Milk Cows ..... (202) 720-3278

    Alissa Cowell-Mytar – Sheep and Goats ..... (202) 720-4751



## Access to NASS Reports

For your convenience, you may access NASS reports and products the following ways:

- All reports are available electronically, at no cost, on the NASS web site: <http://www.nass.usda.gov>
- Both national and state specific reports are available via a free e-mail subscription. To set-up this free subscription, visit <http://www.nass.usda.gov> and in the “Follow NASS” box under “Receive reports by Email,” click on “National” or “State” to select the reports you would like to receive.

For more information on NASS surveys and reports, call the NASS Agricultural Statistics Hotline at (800) 727-9540, 7:30 a.m. to 4:00 p.m. ET, or e-mail: [nass@nass.usda.gov](mailto:nass@nass.usda.gov).

The United States Department of Agriculture (USDA) prohibits discrimination in all its programs and activities on the basis of race, color, national origin, age, disability, and where applicable, sex, marital status, familial status, parental status, religion, sexual orientation, political beliefs, genetic information, reprisal, or because all or a part of an individual's income is derived from any public assistance program. (Not all prohibited bases apply to all programs.) Persons with disabilities who require alternative means for communication of program information (Braille, large print, audiotape, etc.) should contact USDA's TARGET Center at (202) 720-2600 (voice and TDD).

To file a complaint of discrimination, write to USDA, Assistant Secretary for Civil Rights, Office of the Assistant Secretary for Civil Rights, 1400 Independence Avenue, S.W., Stop 9410, Washington, DC 20250-9410, or call toll-free at (866) 632-9992 (English) or (800) 877-8339 (TDD) or (866) 377-8642 (English Federal-relay) or (800) 845-6136 (Spanish Federal-relay). USDA is an equal opportunity provider and employer.



# Managing Risk 21<sup>st</sup> CENTURY *in the*

February 21-22, 2013  
Crystal Gateway Marriott Hotel  
Arlington, Virginia

**[www.usda.gov/oce/forum](http://www.usda.gov/oce/forum)**



USDA is an equal opportunity provider and employer.