



Milk Production

ISSN: 1949-1557

Released July 19, 2013, by the National Agricultural Statistics Service (NASS), Agricultural Statistics Board, United States Department of Agriculture (USDA).

Special Note

Due to sequestration, administrative data will be used for all releases of this report through the end of the fiscal year on September 30, 2013. Releases will contain milk production data only. No information on the number of cows or milk per cow will be released. Please check the NASS website at www.nass.usda.gov for any future updates on NASS programs.

June Milk Production up 1.6 Percent

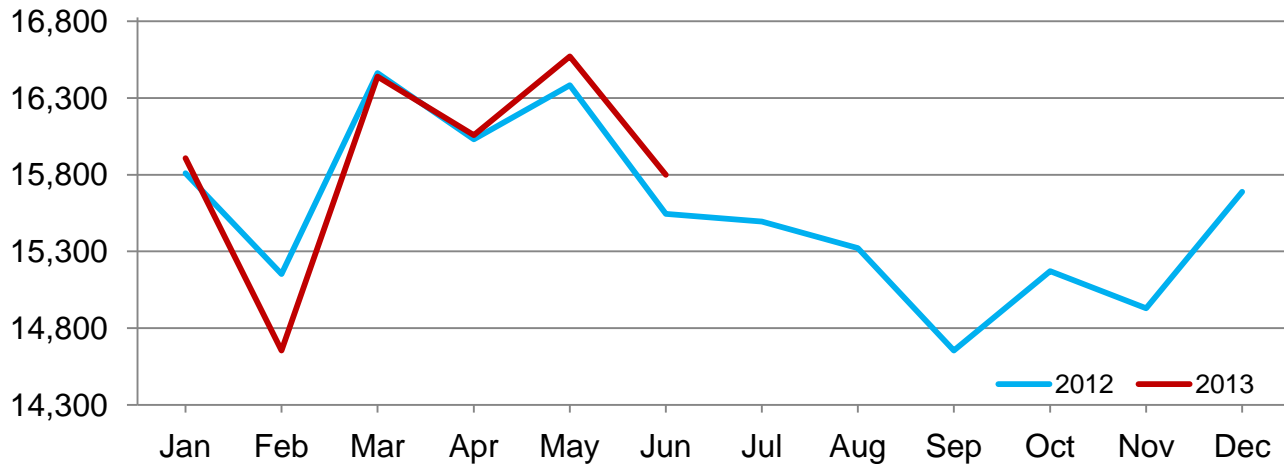
Milk production in the 23 major States during June totaled 15.8 billion pounds, up 1.6 percent from June 2012. May revised production at 16.6 billion pounds, was up 1.1 percent from May 2012. The May revision represented an increase of 47 million pounds or 0.3 percent from last month's preliminary production estimate.

April - June Milk Production up 0.9 Percent

Milk production in the United States during the April - June quarter totaled 52.0 billion pounds, up 0.9 percent from the April - June quarter last year.

Monthly Milk Production – 23 Selected States

Million pounds



Milk Production by Quarter – 2012-2013

[Excludes milk sucked by calves. Blank data cells indicate estimation period has not yet begun]

Quarter	United States		
	2012	2013	Change from 2012
	(million pounds)	(million pounds)	(percent)
January-March	51,044	50,501	-1.1
April-June	51,509	51,954	0.9
July-September	48,675		
October-December	49,096		
Annual	200,324		

Estimated Milk Production by Month 2012-2013

[Excludes milk sucked by calves. Blank data cells indicate estimation period has not yet begun]

Month	23 Selected States			United States		
	2012	2013	Change from 2012	2012	2013	Change from 2012
	(million pounds)	(million pounds)	(percent)	(million pounds)	(million pounds)	(percent)
January	15,810	15,907	0.6	17,016	17,091	0.4
February	15,153	14,653	-3.3	16,310	15,745	-3.5
March	16,462	16,440	-0.1	17,718	17,665	-0.3
April	16,031	16,059	0.2	17,232	17,242	0.1
May	16,384	16,572	1.1	17,601	17,781	1.0
June	15,544	15,800	1.6	16,676	16,931	1.5
July	15,495			16,585		
August	15,322			16,403		
September	14,653			15,687		
October	15,172			16,267		
November	14,929			16,008		
December	15,688			16,821		
Annual	186,643			200,324		

Milk Production – 23 Selected States: May and June, 2012 and 2013

[Excludes milk sucked by calves]

State	Milk production					
	May			June		
	2012	2013	Change from 2012	2012	2013	Change from 2012
	(million pounds)	(million pounds)	(percent)	(million pounds)	(million pounds)	(percent)
Arizona	418	411	-1.7	378	378	-
California	3,744	3,720	-0.6	3,523	3,495	-0.8
Colorado	278	284	2.2	268	279	4.1
Florida	218	225	3.2	199	207	4.0
Idaho	1,172	1,177	0.4	1,154	1,154	-
Illinois	171	174	1.8	159	160	0.6
Indiana	330	347	5.2	310	328	5.8
Iowa	382	400	4.7	359	375	4.5
Kansas	236	258	9.3	224	245	9.4
Michigan	765	784	2.5	737	764	3.7
Minnesota	777	788	1.4	744	758	1.9
Missouri	131	127	-3.1	119	114	-4.2
New Mexico	722	714	-1.1	671	679	1.2
New York	1,153	1,193	3.5	1,098	1,141	3.9
Ohio	470	478	1.7	440	455	3.4
Oregon	223	222	-0.4	214	216	0.9
Pennsylvania	914	935	2.3	859	880	2.4
Texas	847	840	-0.8	785	800	1.9
Utah	170	166	-2.4	165	165	-
Vermont	223	231	3.6	214	221	3.3
Virginia	151	155	2.6	140	143	2.1
Washington	550	558	1.5	522	541	3.6
Wisconsin	2,339	2,385	2.0	2,262	2,302	1.8
23-State Total	16,384	16,572	1.1	15,544	15,800	1.6

- Represents zero.

Milk Production – States and United States: Revised January-March 2012 and 2013 and Preliminary April-June 2012 and 2013

[Excludes milk sucked by calves]

State	January-March milk production			April-June milk production		
	2012	2013	Change from 2012	2012	2013	Change from 2012
	(million pounds)	(million pounds)	(percent)	(million pounds)	(million pounds)	(percent)
Alabama	39.0	33.0	-15.4	37.0	34.0	-8.1
Alaska	1.7	0.8	-52.9	1.4	0.8	-42.9
Arizona	1,230.0	1,186.0	-3.6	1,214.0	1,200.0	-1.2
Arkansas	38.0	32.0	-15.8	38.0	30.0	-21.1
California	10,927.0	10,358.0	-5.2	10,899.0	10,834.0	-0.6
Colorado	780.0	806.0	3.3	814.0	834.0	2.5
Connecticut	93.0	92.0	-1.1	93.0	98.0	5.4
Delaware	25.0	24.7	-1.2	24.8	24.6	-0.8
Florida	655.0	642.0	-2.0	638.0	652.0	2.2
Georgia	424.0	414.0	-2.4	409.0	419.0	2.4
Hawaii	7.2	7.0	-2.8	7.6	7.9	3.9
Idaho	3,289.0	3,242.0	-1.4	3,434.0	3,448.0	0.4
Illinois	511.0	510.0	-0.2	503.0	507.0	0.8
Indiana	951.0	966.0	1.6	967.0	1,012.0	4.7
Iowa	1,131.0	1,139.0	0.7	1,125.0	1,165.0	3.6
Kansas	674.0	722.0	7.1	693.0	750.0	8.2
Kentucky	306.0	292.0	-4.6	294.0	284.0	-3.4
Louisiana	69.0	59.0	-14.5	61.0	58.0	-4.9
Maine	153.0	151.0	-1.3	158.0	157.0	-0.6
Maryland	255.0	250.0	-2.0	252.0	249.0	-1.2
Massachusetts	55.0	58.0	5.5	56.0	60.0	7.1
Michigan	2,208.0	2,272.0	2.9	2,252.0	2,308.0	2.5
Minnesota	2,300.0	2,336.0	1.6	2,291.0	2,320.0	1.3
Mississippi	58.0	52.0	-10.3	54.0	52.0	-3.7
Missouri	366.0	348.0	-4.9	386.0	369.0	-4.4
Montana	74.0	73.0	-1.4	76.0	76.0	-
Nebraska	300.0	298.0	-0.7	300.0	299.0	-0.3
Nevada	167.0	166.0	-0.6	173.0	174.0	0.6
New Hampshire	71.0	69.0	-2.8	72.0	68.0	-5.6
New Jersey	34.0	32.0	-5.9	35.0	33.0	-5.7
New Mexico	2,086.0	2,042.0	-2.1	2,111.0	2,093.0	-0.9
New York	3,291.0	3,325.0	1.0	3,370.0	3,466.0	2.8
North Carolina	252.0	244.0	-3.2	246.0	246.0	-
North Dakota	86.0	88.0	2.3	88.0	89.0	1.1
Ohio	1,352.0	1,375.0	1.7	1,379.0	1,403.0	1.7
Oklahoma	241.0	217.0	-10.0	219.0	216.0	-1.4
Oregon	619.0	613.0	-1.0	649.0	651.0	0.3
Pennsylvania	2,668.0	2,663.0	-0.2	2,677.0	2,719.0	1.6
Rhode Island	4.9	4.2	-14.3	5.0	4.7	-6.0
South Carolina	81.0	72.0	-11.1	74.0	72.0	-2.7
South Dakota	492.0	495.0	0.6	494.0	494.0	-
Tennessee	222.0	206.0	-7.2	210.0	203.0	-3.3
Texas	2,503.0	2,415.0	-3.5	2,475.0	2,456.0	-0.8
Utah	484.0	464.0	-4.1	498.0	489.0	-1.8
Vermont	641.0	649.0	1.2	653.0	672.0	2.9
Virginia	454.0	440.0	-3.1	444.0	451.0	1.6
Washington	1,560.0	1,547.0	-0.8	1,600.0	1,636.0	2.3
West Virginia	40.0	39.0	-2.5	41.0	41.0	-
Wisconsin	6,745.0	6,940.0	2.9	6,887.0	6,996.0	1.6
Wyoming	29.8	32.0	7.4	31.3	32.7	4.5
United States	51,044.0	50,501.0	-1.1	51,509.0	51,954.0	0.9

- Represents zero.

Statistical Methodology

Data Sources: Data for the *Milk Production* report are obtained from Federal Milk Market Orders, dairy check-off data, State Departments of Agriculture, and other administrative sources.

Estimation Procedures: State offices prepare these estimates by using all available administrative data. Individual State estimates are reviewed by the Agricultural Statistics Board for reasonableness.

Revision Policy: Milk production is subject to revision the following month for monthly States or the following quarter for the quarterly States. Additional administrative data are the main basis for revisions. However, not all data are available in time for this revision. Estimates are again subject to revisions in February each year based on additional administrative data. In the event that additional changes are necessary, a third revision is possible in February the following year. Estimates are again reviewed after data from the five-year Census of Agriculture are available. No revisions are made after that date.

Reliability: Results are subject to non-sampling errors such as mistakes in reporting, recording, and processing the administrative data. The effects of these errors cannot be measured directly. They are minimized through rigid quality controls in the data collection process and through a careful review of all administrative data for consistency and reasonableness.

To assist users in evaluating the reliability of the estimates in this report, the “Root Mean Square Error” is shown for milk production in the table below. The “Root Mean Square Error” is a statistical measure based on past performance and is computed using the differences between first and final estimates. The “Root Mean Square Error” for the milk production estimates over the past 20 quarters is 0.1 percent. This means that chances are 2 out of 3 that the final estimate will not be above or below the current estimate of 52.0 billion pounds by more than 0.1 percent. Chances are 9 out of 10 that the difference will not exceed 0.2 percent.

Reliability of Quarterly Milk Production Estimates

[Based on data for the past 20 quarters]

Item	Root mean square error	90 percent confidence level	Difference between first and latest estimate				
			Average	Smallest	Largest	Quarters	
						Below latest	Above latest
Milk production	(percent) 0.1	(percent) 0.2	(1,000) 41	(1,000) 3	(1,000) 96	(number) 16	(number) 4

Information Contacts

Listed below are the commodity specialists in the Livestock Branch of the National Agricultural Statistics Service to contact for additional information. E-mail inquiries may be sent to nass@nass.usda.gov

Dan Kerestes, Chief, Livestock Branch	(202) 720-3570
Scott Hollis, Head, Livestock Section	(202) 690-2424
Travis Averill – Cattle, Cattle on Feed	(202) 720-3040
Doug Bounds – Hogs and Pigs	(202) 720-3106
Alissa Cowell-Mytar – Sheep and Goats	(202) 720-4751
Donnie Fike – Dairy Products	(202) 690-3236
Tiffany Hora – Livestock Slaughter	(515) 284-4340
Mike Miller – Milk Production and Milk Cows	(202) 720-3278

Access to NASS Reports

For your convenience, you may access NASS reports and products the following ways:

- All reports are available electronically, at no cost, on the NASS web site: <http://www.nass.usda.gov>
- Both national and state specific reports are available via a free e-mail subscription. To set-up this free subscription, visit <http://www.nass.usda.gov> and in the “Follow NASS” box under “Receive reports by Email,” click on “National” or “State” to select the reports you would like to receive.

For more information on NASS surveys and reports, call the NASS Agricultural Statistics Hotline at (800) 727-9540, 7:30 a.m. to 4:00 p.m. ET, or e-mail: nass@nass.usda.gov.

The United States Department of Agriculture (USDA) prohibits discrimination in all its programs and activities on the basis of race, color, national origin, age, disability, and where applicable, sex, marital status, familial status, parental status, religion, sexual orientation, political beliefs, genetic information, reprisal, or because all or a part of an individual's income is derived from any public assistance program. (Not all prohibited bases apply to all programs.) Persons with disabilities who require alternative means for communication of program information (Braille, large print, audiotape, etc.) should contact USDA's TARGET Center at (202) 720-2600 (voice and TDD).

To file a complaint of discrimination, write to USDA, Assistant Secretary for Civil Rights, Office of the Assistant Secretary for Civil Rights, 1400 Independence Avenue, S.W., Stop 9410, Washington, DC 20250-9410, or call toll-free at (866) 632-9992 (English) or (800) 877-8339 (TDD) or (866) 377-8642 (English Federal-relay) or (800) 845-6136 (Spanish Federal-relay). USDA is an equal opportunity provider and employer.