



Milk Production

ISSN: 1949-1557

Released September 19, 2013, by the National Agricultural Statistics Service (NASS), Agricultural Statistics Board, United States Department of Agriculture (USDA).

Special Note

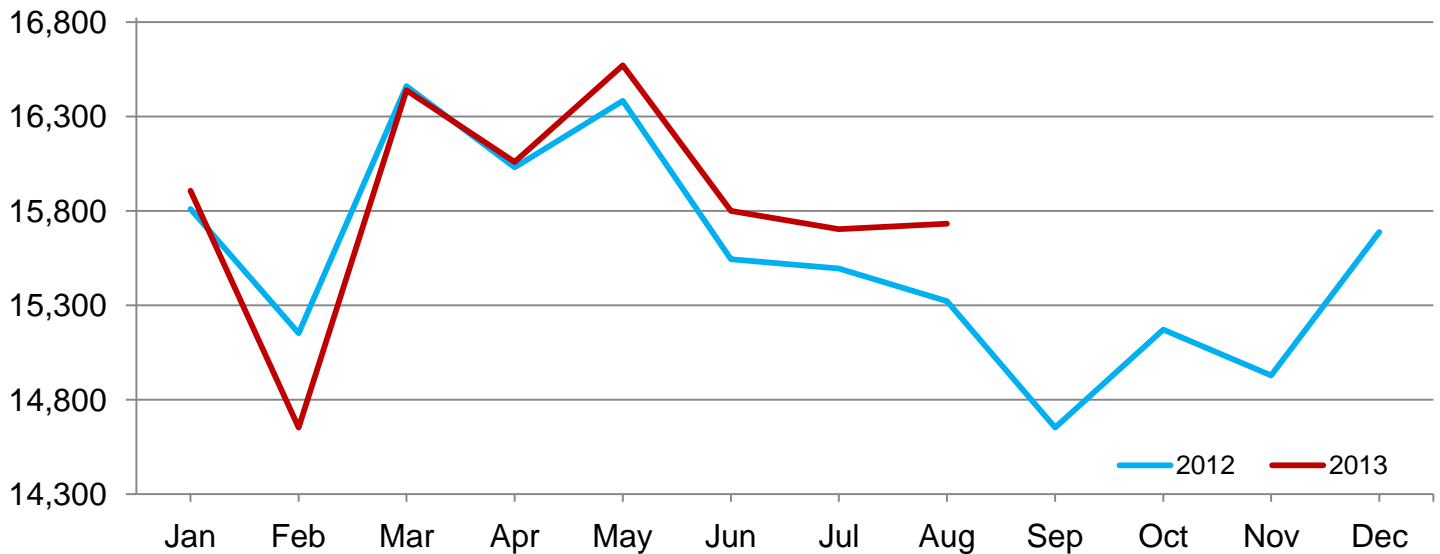
Due to sequestration, administrative data will be used for all releases of this report through the end of the fiscal year on September 30, 2013. Releases will contain milk production data only. No information on the number of cows or milk per cow will be released. Please check the NASS website at www.nass.usda.gov for any future updates on NASS programs.

August Milk Production up 2.7 Percent

Milk production in the 23 major States during August totaled 15.7 billion pounds, up 2.7 percent from August 2012. July revised production, at 15.7 billion pounds, was up 1.3 percent from July 2012. The July revision represented an increase of 29 million pounds or 0.2 percent from last month's preliminary production estimate.

Monthly Milk Production – 23 Selected States

Million pounds



Milk Production by Quarter – 2012-2013

[Excludes milk sucked by calves. Blank data cells indicate estimation period has not yet begun]

Quarter	United States		
	2012	2013	Change from 2012
	(million pounds)	(million pounds)	(percent)
January-March	51,044	50,501	-1.1
April-June	51,509	51,955	0.9
July-September	48,675		
October-December	49,096		
Annual	200,324		

Estimated Milk Production by Month 2012-2013

[Excludes milk sucked by calves. Blank data cells indicate estimation period has not yet begun]

Month	23 Selected States			United States		
	2012	2013	Change from 2012	2012	2013	Change from 2012
	(million pounds)	(million pounds)	(percent)	(million pounds)	(million pounds)	(percent)
January	15,810	15,907	0.6	17,016	17,091	0.4
February	15,153	14,653	-3.3	16,310	15,745	-3.5
March	16,462	16,440	-0.1	17,718	17,665	-0.3
April	16,031	16,059	0.2	17,232	17,242	0.1
May	16,384	16,572	1.1	17,601	17,781	1.0
June	15,544	15,801	1.7	16,676	16,932	1.5
July	15,495	15,703	1.3	16,585	16,804	1.3
August	15,322	15,733	2.7	16,403	16,835	2.6
September	14,653			15,687		
October	15,172			16,267		
November	14,929			16,008		
December	15,688			16,821		
Annual	186,643			200,324		

Milk Production – 23 Selected States: July and August, 2012 and 2013

[Excludes milk sucked by calves]

State	Milk production					
	July			August		
	2012	2013	Change from 2012	2012	2013	Change from 2012
	(million pounds)	(million pounds)	(percent)	(million pounds)	(million pounds)	(percent)
Arizona	354	347	-2.0	326	344	5.5
California	3,498	3,375	-3.5	3,304	3,393	2.7
Colorado	273	288	5.5	275	287	4.4
Florida	187	200	7.0	173	185	6.9
Idaho	1,187	1,174	-1.1	1,183	1,175	-0.7
Illinois	152	157	3.3	155	157	1.3
Indiana	301	322	7.0	313	320	2.2
Iowa	350	384	9.7	363	392	8.0
Kansas	222	248	11.7	226	246	8.8
Michigan	743	768	3.4	752	781	3.9
Minnesota	735	765	4.1	753	767	1.9
Missouri	110	109	-0.9	105	106	1.0
New Mexico	676	689	1.9	661	653	-1.2
New York	1,113	1,135	2.0	1,104	1,150	4.2
Ohio	429	442	3.0	436	449	3.0
Oregon	218	217	-0.5	214	217	1.4
Pennsylvania	860	870	1.2	861	891	3.5
Texas	779	820	5.3	765	790	3.3
Utah	171	171	-	165	169	2.4
Vermont	218	219	0.5	214	220	2.8
Virginia	137	141	2.9	138	142	2.9
Washington	526	547	4.0	523	546	4.4
Wisconsin	2,256	2,315	2.6	2,313	2,353	1.7
23-State Total	15,495	15,703	1.3	15,322	15,733	2.7

- Represents zero.

Statistical Methodology

Data Sources: Data for the *Milk Production* report are obtained from Federal Milk Market Orders, dairy check-off data, State Departments of Agriculture, and other administrative sources.

Estimation Procedures: State offices prepare these estimates by using all available administrative data. Individual State estimates are reviewed by the Agricultural Statistics Board for reasonableness.

Revision Policy: Milk production is subject to revision the following month for monthly States or the following quarter for the quarterly States. Additional administrative data are the main basis for revisions. However, not all data are available in time for this revision. Estimates are again subject to revisions in February each year based on additional administrative data. In the event that additional changes are necessary, a third revision is possible in February the following year. Estimates are again reviewed after data from the five-year Census of Agriculture are available. No revisions are made after that date.

Reliability: Results are subject to non-sampling errors such as mistakes in reporting, recording, and processing the administrative data. The effects of these errors cannot be measured directly. They are minimized through rigid quality controls in the data collection process and through a careful review of all administrative data for consistency and reasonableness.

To assist users in evaluating the reliability of the estimates in this report, the “Root Mean Square Error” is shown for milk production in the table below. The “Root Mean Square Error” is a statistical measure based on past performance and is computed using the differences between first and final estimates. The “Root Mean Square Error” for the 23 State milk production estimates over the past 24 months is 0.1 percent. This means that chances are 2 out of 3 that the final estimate will not be above or below the current estimate of 15.7 billion pounds by more than 0.1 percent. Chances are 9 out of 10 that the difference will not exceed 0.2 percent.

Reliability of Monthly Milk Production Estimates

[Based on data for the past 24 months]

Item	Root mean square error	90 percent confidence level	Difference between first and latest estimate				
			Average	Smallest	Largest	Months	
						Below latest	Above latest
Milk production	(percent) 0.1	(percent) 0.2	(1,000) 16	(1,000) 0	(1,000) 48	(number) 13	(number) 9

Information Contacts

Listed below are the commodity specialists in the Livestock Branch of the National Agricultural Statistics Service to contact for additional information. E-mail inquiries may be sent to nass@nass.usda.gov

Dan Kerestes, Chief, Livestock Branch	(202) 720-3570
Scott Hollis, Head, Livestock Section	(202) 690-2424
Travis Averill – Cattle, Cattle on Feed	(202) 720-3040
Doug Bounds – Hogs and Pigs	(202) 720-3106
Alissa Cowell-Mytar – Sheep and Goats	(202) 720-4751
Donnie Fike – Dairy Products	(202) 690-3236
Tiffany Hora – Livestock Slaughter	(515) 284-4340
Mike Miller – Milk Production and Milk Cows	(202) 720-3278

Access to NASS Reports

For your convenience, you may access NASS reports and products the following ways:

- All reports are available electronically, at no cost, on the NASS web site: <http://www.nass.usda.gov>
- Both national and state specific reports are available via a free e-mail subscription. To set-up this free subscription, visit <http://www.nass.usda.gov> and in the “Follow NASS” box under “Receive reports by Email,” click on “National” or “State” to select the reports you would like to receive.

For more information on NASS surveys and reports, call the NASS Agricultural Statistics Hotline at (800) 727-9540, 7:30 a.m. to 4:00 p.m. ET, or e-mail: nass@nass.usda.gov.

The U.S. Department of Agriculture (USDA) prohibits discrimination against its customers, employees, and applicants for employment on the bases of race, color, national origin, age, disability, sex, gender identity, religion, reprisal, and where applicable, political beliefs, marital status, familial or parental status, sexual orientation, or all or part of an individual's income is derived from any public assistance program, or protected genetic information in employment or in any program or activity conducted or funded by the Department. (Not all prohibited bases will apply to all programs and/or employment activities.)

If you wish to file a Civil Rights program complaint of discrimination, complete the [USDA Program Discrimination Complaint Form](#) (PDF), found online at http://www.ascr.usda.gov/complaint_filing_cust.html, or at any USDA office, or call (866) 632-9992 to request the form. You may also write a letter containing all of the information requested in the form. Send your completed complaint form or letter to us by mail at U.S. Department of Agriculture, Director, Office of Adjudication, 1400 Independence Avenue, S.W., Washington, D.C. 20250-9410, by fax (202) 690-7442 or email at program.intake@usda.gov.