



Milk Production

ISSN: 1949-1557

Released December 19, 2013, by the National Agricultural Statistics Service (NASS), Agricultural Statistics Board, United States Department of Agriculture (USDA).

November Milk Production up 0.3 Percent

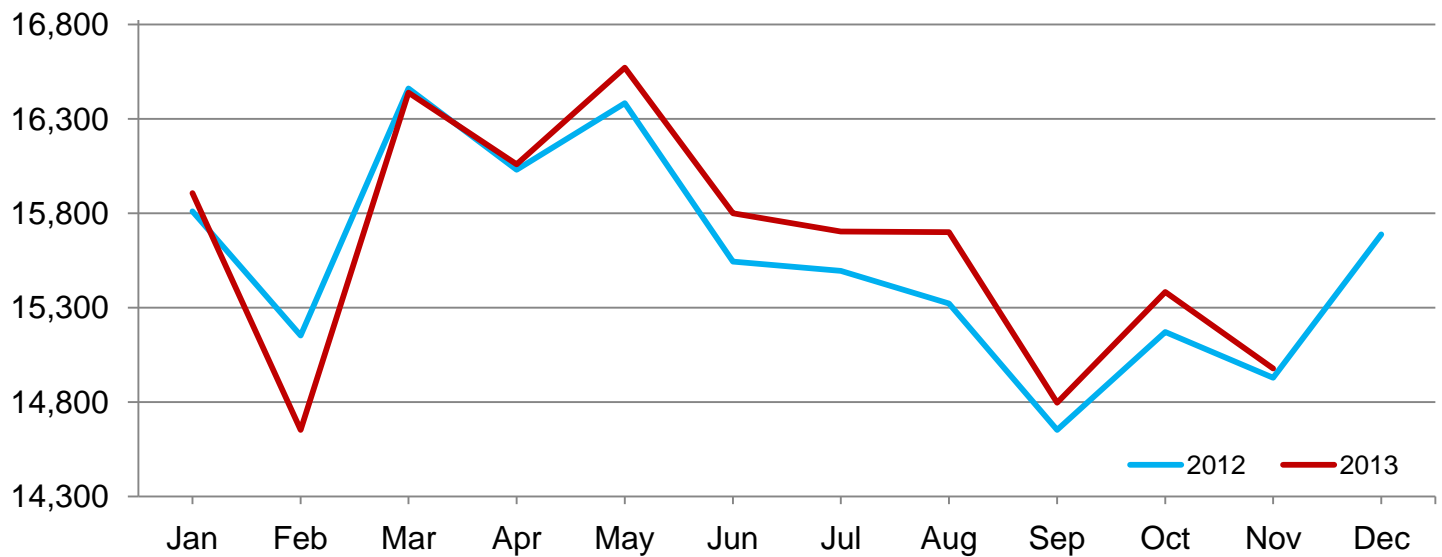
Milk production in the 23 major States during November totaled 15.0 billion pounds, up 0.3 percent from November 2012. October revised production, at 15.4 billion pounds, was up 1.4 percent from October 2012. The October revision represented an increase of 27 million pounds or 0.2 percent from last month's preliminary production estimate.

Production per cow in the 23 major States averaged 1,762 pounds for November, 1 pound above November 2012.

The number of milk cows on farms in the 23 major States was 8.50 million head, 22,000 head more than November 2012, but 4,000 head less than October 2013.

Monthly Milk Production – 23 Selected States

Million pounds



Milk Cows and Production by Quarter – United States: 2012 - 2013

[May not add due to rounding]

Quarter	Milk Cows ¹		Milk Per Cow ²		Milk Production ²		
	2012	2013 ³	2012	2013 ³	2012	2013	Change From 2012
	(1,000 Head)	(1,000 Head)	(Pounds)	(Pounds)	(Million Pounds)	(Million Pounds)	(Percent)
January-March	9,257		5,514		51,044	50,501	-1.1
April-June	9,259		5,563		51,509	51,962	0.9
July-September	9,211	9,226	5,284	5,355	48,675	49,406	1.5
October-December	9,203		5,335		49,096		
Annual	9,233		21,697		200,324		

¹ Includes dry cows. Excludes heifers not yet fresh.

² Excludes milk sucked by calves.

³ Survey was not conducted in April and July resulting in no milk cow and milk per cow data for March through June.

Milk Cows and Production By Month – 23 Selected States: 2012 - 2013

Month	Milk cows ¹		Milk per cow ²		Milk production ²		
	2012	2013 ³	2012	2013 ³	2012	2013	Change from 2012
	(1,000 head)	(1,000 head)	(pounds)	(pounds)	(million pounds)	(million pounds)	(percent)
January	8,502	8,498	1,860	1,872	15,810	15,907	0.6
February	8,513	8,502	1,780	1,723	15,153	14,653	-3.3
March	8,525		1,931		16,462	16,440	-0.1
April	8,529		1,880		16,031	16,059	0.2
May	8,525		1,922		16,384	16,572	1.1
June	8,509		1,827		15,544	15,801	1.7
July	8,494	8,529	1,824	1,841	15,495	15,703	1.3
August	8,492	8,525	1,804	1,842	15,322	15,700	2.5
September	8,473	8,505	1,729	1,740	14,653	14,797	1.0
October	8,467	8,504	1,792	1,809	15,172	15,383	1.4
November	8,478	8,500	1,761	1,762	14,929	14,979	0.3
December	8,494		1,847		15,688		
Annual	8,500		21,957		186,643		

¹ Includes dry cows; excludes heifers not yet fresh.

² Excludes milk sucked by calves.

³ Survey was not conducted in April and July resulting in no milk cow and milk per cow data for March through June.

Estimated Milk Cows and Production By Month – United States: 2012 - 2013

Month	Milk cows ¹		Milk per cow ²		Milk production ²		
	2012	2013 ³	2012	2013 ³	2012	2013	Change from 2012
	(1,000 head)	(1,000 head)	(pounds)	(pounds)	(million pounds)	(million pounds)	(percent)
January	9,242	9,222	1,841	1,853	17,016	17,091	0.4
February	9,257	9,226	1,762	1,707	16,310	15,745	-3.5
March	9,271		1,911		17,718	17,665	-0.3
April	9,273		1,858		17,232	17,241	0.1
May	9,263		1,900		17,601	17,783	1.0
June	9,241		1,805		16,676	16,938	1.6
July	9,222	9,242	1,798	1,817	16,585	16,792	1.2
August	9,217	9,232	1,780	1,819	16,403	16,790	2.4
September	9,195	9,205	1,706	1,719	15,687	15,824	0.9
October	9,189	9,203	1,770	1,788	16,267	16,457	1.2
November	9,201	9,198	1,740	1,742	16,008	16,025	0.1
December	9,218		1,825		16,821		
Annual	9,233		21,697		200,324		

¹ Includes dry cows; excludes heifers not yet fresh.

² Excludes milk sucked by calves.

³ Survey was not conducted in April and July resulting in no milk cow and milk per cow data for March through June.

Milk Cows and Production – 23 Selected States: November 2012 and 2013

[May not add due to rounding]

State	Milk cows ¹		Milk per cow ²		Milk production ²		Change from 2012 (percent)
	2012	2013	2012	2013	2012	2013	
	(1,000 head)	(1,000 head)	(pounds)	(pounds)	(million pounds)	(million pounds)	
Arizona	185	190	1,890	1,860	350	353	0.9
California	1,779	1,780	1,835	1,845	3,264	3,284	0.6
Colorado	135	137	1,940	1,975	262	271	3.4
Florida	122	122	1,460	1,485	178	181	1.7
Idaho	578	570	1,890	1,880	1,092	1,072	-1.8
Illinois	100	98	1,570	1,560	157	153	-2.5
Indiana	173	178	1,730	1,730	299	308	3.0
Iowa	205	206	1,790	1,775	367	366	-0.3
Kansas	128	135	1,770	1,810	227	244	7.5
Michigan	375	381	1,945	1,925	729	733	0.5
Minnesota	465	465	1,590	1,560	739	725	-1.9
Missouri	93	90	1,180	1,160	110	104	-5.5
New Mexico	323	322	2,000	1,990	646	641	-0.8
New York	610	610	1,735	1,770	1,058	1,080	2.1
Ohio	270	269	1,610	1,580	435	425	-2.3
Oregon	123	123	1,600	1,595	197	196	-0.5
Pennsylvania	533	530	1,590	1,595	847	845	-0.2
Texas	430	440	1,770	1,770	761	779	2.4
Utah	89	92	1,750	1,790	156	165	5.8
Vermont	134	132	1,545	1,570	207	207	-
Virginia	95	94	1,445	1,490	137	140	2.2
Washington	262	265	1,880	1,895	493	502	1.8
Wisconsin	1,271	1,271	1,745	1,735	2,218	2,205	-0.6
23-State Total	8,478	8,500	1,761	1,762	14,929	14,979	0.3

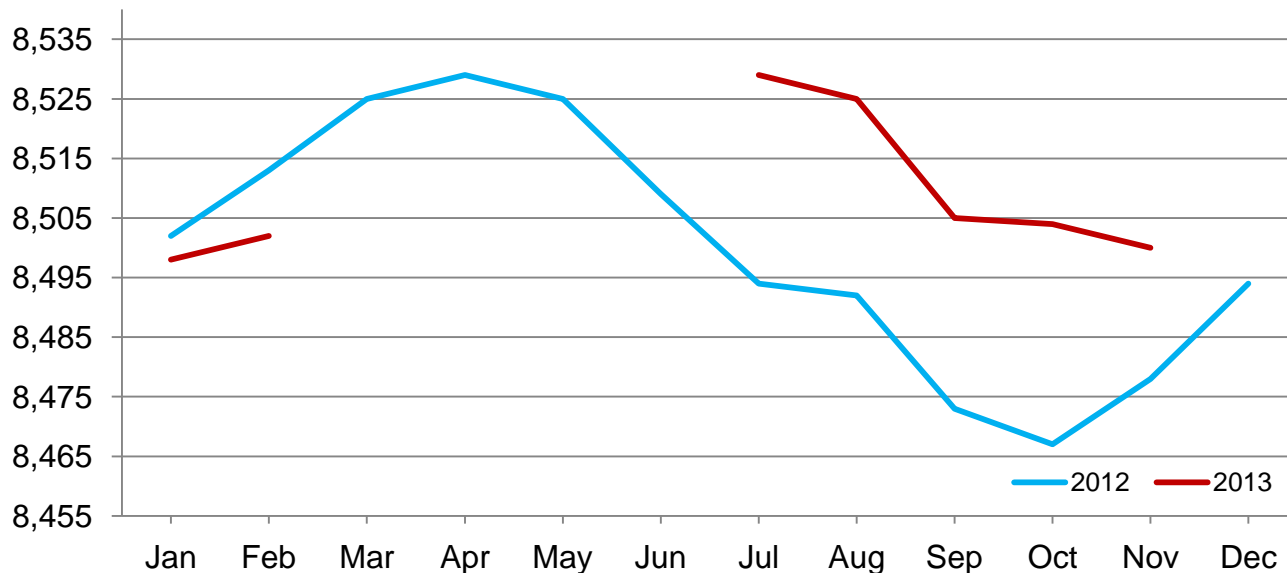
- Represents zero.

¹ Average number during year, excluding heifers not yet fresh.

² Excludes milk sucked by calves.

Monthly Milk Cows – 23 Selected States

Thousand Head



Milk Cows and Production – 23 Selected States: October 2012 and 2013

[May not add due to rounding]

	Milk cows ¹		Milk per cow ²		Milk Production ²		Change from 2012
	2012	2013	2012	2013	2012	2013	
	(1,000 head)	(1,000 head)	(pounds)	(pounds)	(million pounds)	(million pounds)	(percent)
Arizona	183	190	1,875	1,880	343	357	4.1
California	1,778	1,781	1,860	1,875	3,307	3,339	1.0
Colorado	135	137	2,015	2,030	272	278	2.2
Florida	122	123	1,310	1,400	160	172	7.5
Idaho	577	570	1,970	1,945	1,137	1,109	-2.5
Illinois	100	98	1,570	1,575	157	154	-1.9
Indiana	172	178	1,735	1,790	298	319	7.0
Iowa	203	206	1,795	1,835	364	378	3.8
Kansas	127	135	1,805	1,835	229	248	8.3
Michigan	374	381	1,990	1,995	744	760	2.2
Minnesota	465	465	1,605	1,605	746	746	-
Missouri	93	90	1,180	1,190	110	107	-2.7
New Mexico	324	322	2,025	2,025	656	652	-0.6
New York	610	610	1,775	1,840	1,083	1,122	3.6
Ohio	270	269	1,650	1,630	446	438	-1.8
Oregon	123	123	1,685	1,690	207	208	0.5
Pennsylvania	533	530	1,620	1,630	863	864	0.1
Texas	430	440	1,795	1,820	772	801	3.8
Utah	88	92	1,810	1,820	159	167	5.0
Vermont	133	132	1,595	1,620	212	214	0.9
Virginia	95	94	1,465	1,510	139	142	2.2
Washington	261	266	1,960	1,975	512	525	2.5
Wisconsin	1,271	1,272	1,775	1,795	2,256	2,283	1.2
23-State Total	8,467	8,504	1,792	1,809	15,172	15,383	1.4

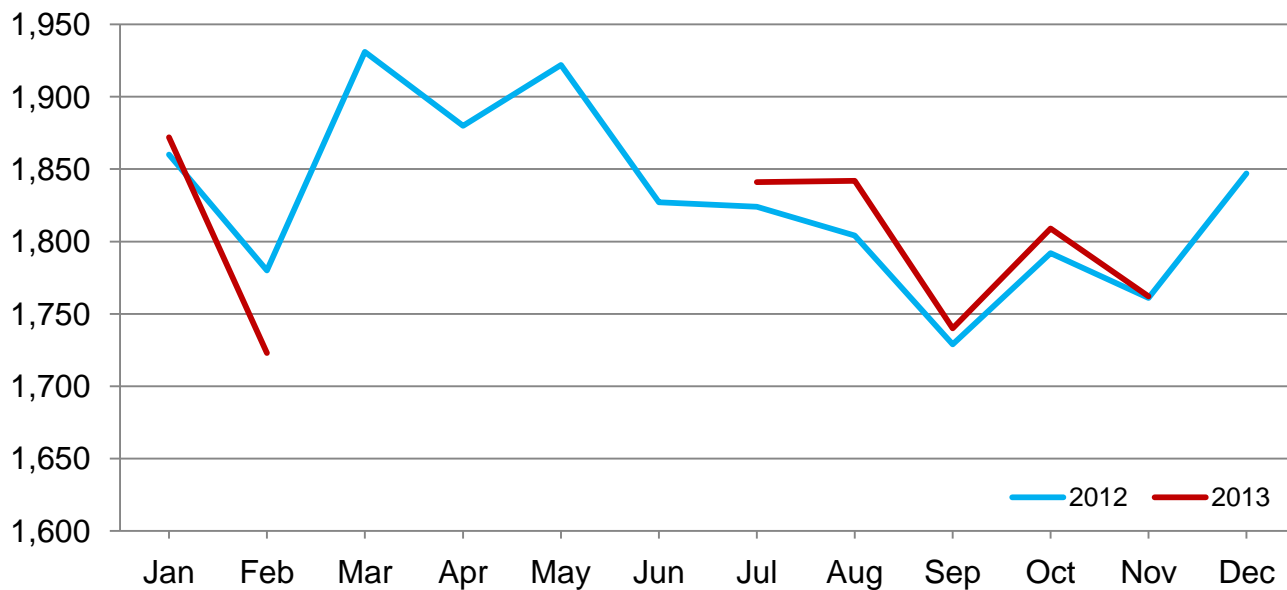
- Represents zero.

¹ Average number during year, excluding heifers not yet fresh.

² Excludes milk sucked by calves.

Monthly Milk per Cow – 23 Selected States

Pounds



Statistical Methodology

Survey Procedures: Primary data used to determine these estimates were obtained from a sample of producers. Individual States maintain a list of all known milk producers and information on the size of their herd. States use all known sources of producers to ensure that their lists are as complete as possible. Generally, all large producers and a sample of small producers are included in the survey. Questionnaires are mailed to producers near the end of the month to obtain data for the first day of the month. Additional reports are obtained by telephone, as needed, to supplement the mail response. Where feasible, States utilize state and federal administrative data to estimate milk production. This eliminates duplication of data gathering by different government agencies. Indications of milk cow inventory are also obtained in the January Cattle Surveys.

Estimation Procedures: State offices prepare these estimates by using a combination of survey indications, historic trends, and any available administrative data. Individual State estimates are reviewed by the Agricultural Statistics Board for reasonableness.

Revision Policy: Milk production, milk per cow, and number of milk cows are subject to revision the following month after initial publication for monthly States or the following quarter for the quarterly States. Normally, administrative data from Federal Market Orders, State Departments of Agriculture, or other sources are the main basis for revisions. However, administrative data for all States may not be available in time for these revisions. Estimates are again subject to revisions in February each year based on additional administrative data. In the event that additional changes are necessary, a third revision is possible in February the following year. Estimates are again reviewed after data from the five-year Census of Agriculture are available. No revisions are made after that date.

Reliability: Since all operations with dairy animals are not included in the sample, survey estimates are subject to sampling variability. Survey results are also subject to non-sampling errors such as omissions, duplications, and mistakes in reporting, recording, and processing the data. The effects of these errors cannot be measured directly. They are minimized through rigid quality controls in the data collection process and through a careful review of all reported data for consistency and reasonableness.

To assist users in evaluating the reliability of the estimates in this report, the "Root Mean Square Error" is shown for selected items in the table below. The "Root Mean Square Error" is a statistical measure based on past performance and is computed using the differences between first and final estimates. The "Root Mean Square Error" for the 23 State milk production estimates over the past 24 months is 0.1 percent. This means that chances are 2 out of 3 that the final estimate will not be above or below the current estimate of 15.0 billion pounds by more than 0.1 percent. Chances are 9 out of 10 that the difference will not exceed 0.2 percent.

Reliability of Monthly Milk Production Estimates

[Based on data for the past 24 months]

Item	Root mean square error	90 percent confidence level	Difference between first and latest estimate				
			Average	Smallest	Largest	Months	
						Below latest	Above latest
	(percent)	(percent)	(1,000)	(1,000)	(1,000)	(number)	(number)
Milk production	0.1	0.2	17	0	48	13	9
All Milk cows	0.0	0.1	3	0	6	16	7

Information Contacts

Listed below are the commodity specialists in the Livestock Branch of the National Agricultural Statistics Service to contact for additional information. E-mail inquiries may be sent to nass@nass.usda.gov

Dan Kerestes, Chief, Livestock Branch	(202) 720-3570
Scott Hollis, Head, Livestock Section	(202) 690-2424
Travis Averill – Cattle, Cattle on Feed	(202) 720-3040
Doug Bounds – Hogs and Pigs	(202) 720-3106
Alissa Cowell-Mytar – Sheep and Goats	(202) 720-4751
Donnie Fike – Dairy Products	(202) 690-3236
Tiffany Hora – Livestock Slaughter	(515) 284-4340
Mike Miller – Milk Production and Milk Cows	(202) 720-3278

Access to NASS Reports

For your convenience, you may access NASS reports and products the following ways:

- All reports are available electronically, at no cost, on the NASS web site: <http://www.nass.usda.gov>
- Both national and state specific reports are available via a free e-mail subscription. To set-up this free subscription, visit <http://www.nass.usda.gov> and in the “Follow NASS” box under “Receive reports by Email,” click on “National” or “State” to select the reports you would like to receive.

For more information on NASS surveys and reports, call the NASS Agricultural Statistics Hotline at (800) 727-9540, 7:30 a.m. to 4:00 p.m. ET, or e-mail: nass@nass.usda.gov.

The U.S. Department of Agriculture (USDA) prohibits discrimination against its customers, employees, and applicants for employment on the bases of race, color, national origin, age, disability, sex, gender identity, religion, reprisal, and where applicable, political beliefs, marital status, familial or parental status, sexual orientation, or all or part of an individual's income is derived from any public assistance program, or protected genetic information in employment or in any program or activity conducted or funded by the Department. (Not all prohibited bases will apply to all programs and/or employment activities.)

If you wish to file a Civil Rights program complaint of discrimination, complete the [USDA Program Discrimination Complaint Form](#) (PDF), found online at http://www.ascr.usda.gov/complaint_filing_cust.html, or at any USDA office, or call (866) 632-9992 to request the form. You may also write a letter containing all of the information requested in the form. Send your completed complaint form or letter to us by mail at U.S. Department of Agriculture, Director, Office of Adjudication, 1400 Independence Avenue, S.W., Washington, D.C. 20250-9410, by fax (202) 690-7442 or email at program.intake@usda.gov.