



Released October 20, 2014, by the National Agricultural Statistics Service (NASS), Agricultural Statistics Board, United States Department of Agriculture (USDA).

## September Milk Production up 4.1 Percent

**Milk production** in the 23 major States during September totaled 15.5 billion pounds, up 4.1 percent from September 2013. August revised production at 16.2 billion pounds, was up 2.6 percent from August 2013. The August revision represented a decrease of 3 million pounds or less than 0.1 percent from last month's preliminary production estimate.

**Production per cow** in the 23 major States averaged 1,804 pounds for September, 56 pounds above September 2013. This is the highest production per cow for the month of September since the 23 State series began in 2003.

**The number of milk cows** on farms in the 23 major States was 8.59 million head, 78,000 head more than September 2013, and 4,000 head more than August 2014.

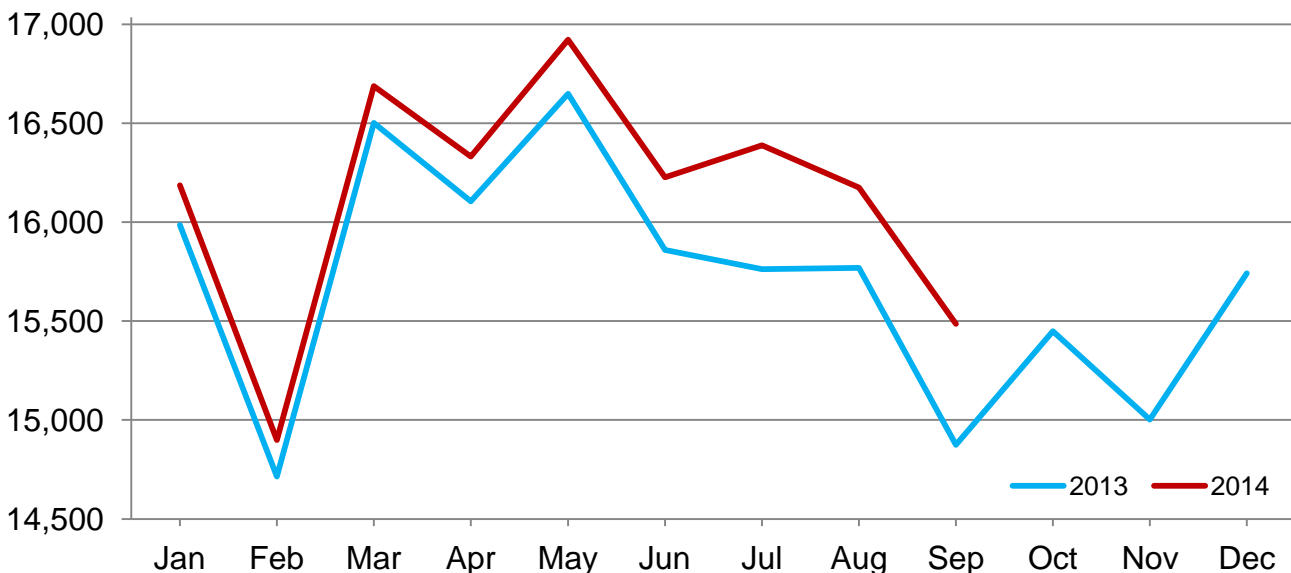
## July - September Milk Production up 3.5 Percent

**Milk production** in the United States during the July - September quarter totaled 51.1 billion pounds, up 3.5 percent from the July - September quarter last year.

**The average number of milk cows** in the United States during the quarter was 9.27 million head, 15,000 head more than the April - June quarter, and 44,000 head more than the same period last year.

## Monthly Milk Production – 23 Selected States

Million pounds



## Milk Cows and Production by Quarter – United States: 2013-2014

[May not add due to rounding]

Quarter	Milk Cows <sup>1</sup>		Milk Per Cow <sup>2</sup>		Milk Production <sup>2</sup>		
	2013 <sup>3</sup>	2014	2013 <sup>3</sup>	2014	2013	2014	Change From 2013
	(1,000 Head)	(1,000 Head)	(Pounds)	(Pounds)	(Million Pounds)	(Million Pounds)	(Percent)
January-March .....		9,214		5,540	50,545	51,046	1.0
April-June .....		9,253		5,713	51,997	52,861	1.7
July-September .....	9,224	9,268	5,356	5,517	49,408	51,134	3.5
October-December .....	9,201		5,355		49,268		
Annual .....	9,221		21,822		201,218		

<sup>1</sup> Includes dry cows. Excludes heifers not yet fresh.

<sup>2</sup> Excludes milk sucked by calves.

<sup>3</sup> Survey was not conducted in April and July, resulting in no milk cow and milk per cow data for March through June. 2013 annual totals include modeled data.

## Milk Cows and Production By Month – 23 Selected States: 2013-2014

Month	Milk cows <sup>1</sup>		Milk per cow <sup>2</sup>		Milk production <sup>2</sup>		
	2013 <sup>3</sup>	2014	2013 <sup>3</sup>	2014	2013	2014	Change from 2013
	(1,000 head)	(1,000 head)	(pounds)	(pounds)	(million pounds)	(million pounds)	(percent)
January .....	8,497	8,512	1,881	1,902	15,985	16,186	1.3
February .....	8,498	8,513	1,732	1,750	14,715	14,899	1.3
March .....		8,521		1,958	16,501	16,687	1.1
April .....		8,542		1,912	16,105	16,332	1.4
May .....		8,559		1,977	16,648	16,922	1.6
June .....		8,572		1,893	15,860	16,227	2.3
July .....	8,522	8,583	1,850	1,909	15,762	16,388	4.0
August .....	8,522	8,582	1,850	1,885	15,768	16,174	2.6
September .....	8,508	8,586	1,748	1,804	14,874	15,485	4.1
October .....	8,504		1,817		15,449		
November .....	8,499		1,765		15,002		
December .....	8,504		1,851		15,741		
Annual .....	8,508		22,145		188,410		

<sup>1</sup> Includes dry cows. Excludes heifers not yet fresh.

<sup>2</sup> Excludes milk sucked by calves.

<sup>3</sup> Survey was not conducted in April and July, resulting in no milk cow and milk per cow data for March through June.

## Estimated Milk Cows and Production By Month – United States: 2013-2014

Month	Milk cows <sup>1</sup>		Milk per cow <sup>2</sup>		Milk production <sup>2</sup>		
	2013 <sup>3</sup>	2014	2013 <sup>3</sup>	2014	2013	2014	Change from 2013
	(1,000 head)	(1,000 head)	(pounds)	(pounds)	(million pounds)	(million pounds)	(percent)
January .....	9,222	9,210	1,855	1,878	17,109	17,293	1.1
February .....	9,223	9,212	1,709	1,728	15,759	15,920	1.0
March .....		9,221		1,934	17,677	17,833	0.9
April .....		9,238		1,891	17,249	17,468	1.3
May .....		9,254		1,954	17,813	18,080	1.5
June .....		9,267		1,868	16,935	17,313	2.2
July .....	9,235	9,271	1,818	1,882	16,788	17,448	3.9
August .....	9,229	9,265	1,819	1,858	16,789	17,214	2.5
September .....	9,208	9,267	1,719	1,777	15,831	16,472	4.0
October .....	9,203		1,790		16,475		
November .....	9,198		1,740		16,003		
December .....	9,202		1,825		16,790		
Annual .....	9,221		21,822		201,218		

<sup>1</sup> Includes dry cows. Excludes heifers not yet fresh.

<sup>2</sup> Excludes milk sucked by calves.

<sup>3</sup> Survey was not conducted in April and July, resulting in no milk cow and milk per cow data for March through June.

## Milk Cows and Production – 23 Selected States: September 2013 and 2014

[May not add due to rounding]

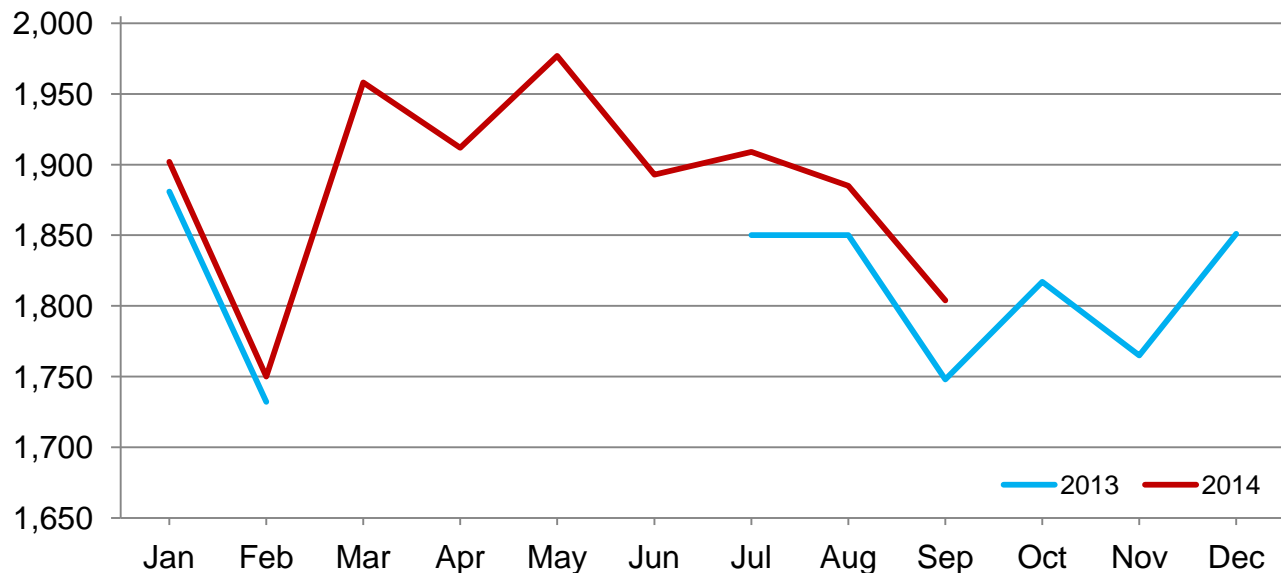
State	Milk cows <sup>1</sup>		Milk per cow <sup>2</sup>		Milk production <sup>2</sup>		Change from 2013
	2013	2014	2013	2014	2013	2014	
	(1,000 head)	(1,000 head)	(pounds)	(pounds)	(million pounds)	(million pounds)	(percent)
Arizona .....	188	193	1,720	1,780	323	344	6.5
California .....	1,781	1,779	1,795	1,850	3,197	3,291	2.9
Colorado .....	137	145	1,965	2,055	269	298	10.8
Florida .....	123	123	1,325	1,400	163	172	5.5
Idaho .....	571	578	1,925	1,965	1,099	1,136	3.4
Illinois .....	97	94	1,475	1,510	143	142	-0.7
Indiana .....	177	179	1,710	1,770	303	317	4.6
Iowa .....	206	207	1,735	1,775	357	367	2.8
Kansas .....	134	143	1,710	1,750	229	250	9.2
Michigan .....	381	395	1,940	2,000	739	790	6.9
Minnesota .....	463	460	1,565	1,600	725	736	1.5
New Mexico .....	322	323	1,940	2,000	625	646	3.4
New York .....	610	615	1,770	1,835	1,080	1,129	4.5
Ohio .....	270	267	1,575	1,630	425	435	2.4
Oregon .....	123	124	1,650	1,660	203	206	1.5
Pennsylvania .....	532	530	1,570	1,630	835	864	3.5
South Dakota .....	95	97	1,765	1,795	168	174	3.6
Texas .....	440	470	1,700	1,745	748	820	9.6
Utah .....	92	96	1,815	1,870	167	180	7.8
Vermont .....	133	132	1,560	1,630	207	215	3.9
Virginia .....	95	93	1,430	1,510	136	140	2.9
Washington .....	266	273	1,930	1,980	513	541	5.5
Wisconsin .....	1,272	1,270	1,745	1,805	2,220	2,292	3.2
23-State Total .....	8,508	8,586	1,748	1,804	14,874	15,485	4.1

<sup>1</sup> Includes dry cows. Excludes heifers not yet fresh.

<sup>2</sup> Excludes milk sucked by calves.

## Monthly Milk per Cow – 23 Selected States

Pounds



## Milk Cows and Production – 23 Selected States: August 2013 and 2014

[May not add due to rounding]

	Milk cows <sup>1</sup>		Milk per cow <sup>2</sup>		Milk Production <sup>2</sup>		Change from 2013
	2013	2014	2013	2014	2013	2014	
	(1,000 head)	(1,000 head)	(pounds)	(pounds)	(million pounds)	(million pounds)	(percent)
Arizona .....	188	193	1,830	1,865	344	360	4.7
California .....	1,780	1,779	1,910	1,940	3,400	3,451	1.5
Colorado .....	137	145	2,095	2,135	287	310	8.0
Florida .....	123	123	1,450	1,565	178	192	7.9
Idaho .....	573	578	2,060	2,090	1,180	1,208	2.4
Illinois .....	97	94	1,550	1,580	150	149	-0.7
Indiana .....	177	179	1,810	1,875	320	336	5.0
Iowa .....	208	207	1,850	1,860	385	385	-
Kansas .....	135	143	1,790	1,810	242	259	7.0
Michigan .....	381	394	2,050	2,105	781	829	6.1
Minnesota .....	465	460	1,635	1,660	760	764	0.5
New Mexico .....	324	323	2,015	2,100	653	678	3.8
New York .....	610	615	1,885	1,920	1,150	1,181	2.7
Ohio .....	271	266	1,680	1,735	455	462	1.5
Oregon .....	123	123	1,750	1,725	215	212	-1.4
Pennsylvania .....	533	530	1,660	1,680	885	890	0.6
South Dakota .....	95	97	1,835	1,855	174	180	3.4
Texas .....	440	470	1,795	1,785	790	839	6.2
Utah .....	92	96	1,915	1,930	176	185	5.1
Vermont .....	135	132	1,630	1,725	220	228	3.6
Virginia .....	95	93	1,490	1,580	142	147	3.5
Washington .....	268	272	2,040	2,060	547	560	2.4
Wisconsin .....	1,272	1,270	1,835	1,865	2,334	2,369	1.5
23-State Total .....	8,522	8,582	1,850	1,885	15,768	16,174	2.6

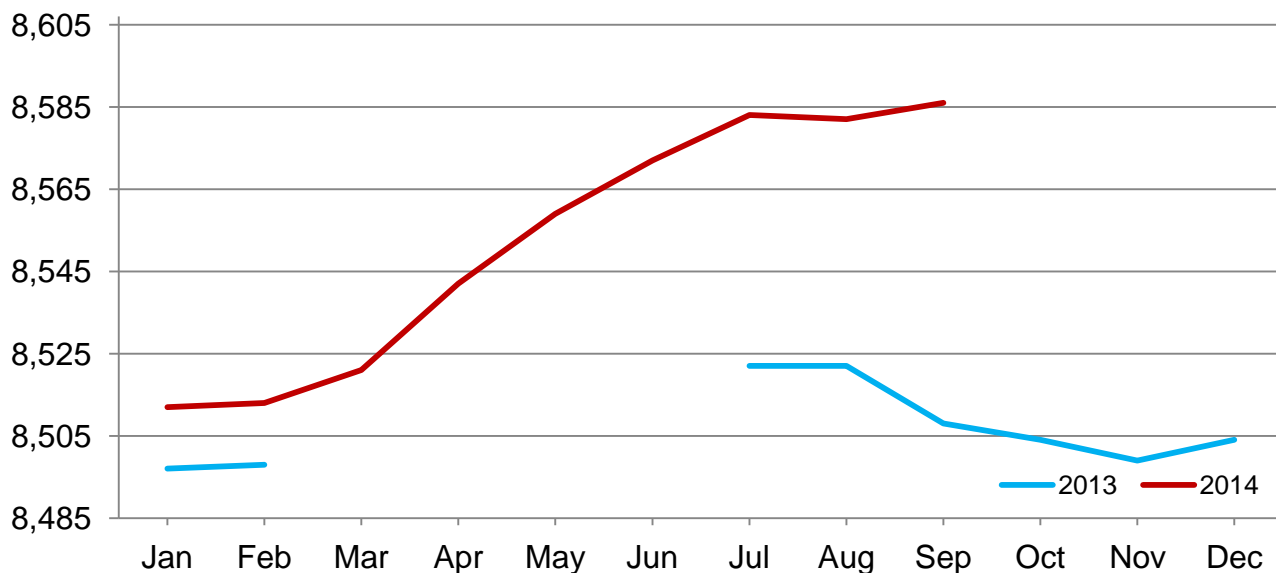
- Represents zero.

<sup>1</sup> Includes dry cows. Excludes heifers not yet fresh.

<sup>2</sup> Excludes milk sucked by calves.

## Monthly Milk Cows – 23 Selected States

Thousand head



## Milk Cows and Production – States and United States: Revised April - June 2013 and 2014

[May not add due to rounding]

State	April - June milk cows <sup>1</sup>		April - June milk production <sup>2</sup>		
	2013 <sup>3</sup>	2014	2013	2014	Change from 2013
	(1,000 head)	(1,000 head)	(million pounds)	(million pounds)	(percent)
Alabama .....		8.5	34.0	31.0	-8.8
Alaska .....		0.3	0.8	0.9	12.5
Arizona .....		192.0	1,200.0	1,246.0	3.8
Arkansas .....		7.5	30.0	27.0	-10.0
California .....		1,779.0	10,831.0	10,979.0	1.4
Colorado .....		144.0	833.0	913.0	9.6
Connecticut .....		19.0	98.0	97.0	-1.0
Delaware .....		4.8	24.7	24.9	0.8
Florida .....		123.0	647.0	679.0	4.9
Georgia .....		81.0	421.0	452.0	7.4
Hawaii .....		2.2	7.9	7.8	-1.3
Idaho .....		574.0	3,451.0	3,531.0	2.3
Illinois .....		95.0	486.0	486.0	-
Indiana .....		177.0	987.0	995.0	0.8
Iowa .....		207.0	1,182.0	1,179.0	-0.3
Kansas .....		141.0	749.0	800.0	6.8
Kentucky .....		64.0	284.0	268.0	-5.6
Louisiana .....		15.0	58.0	57.0	-1.7
Maine .....		30.0	157.0	152.0	-3.2
Maryland .....		50.0	249.0	254.0	2.0
Massachusetts .....		12.5	61.0	61.0	-
Michigan .....		385.0	2,333.0	2,420.0	3.7
Minnesota .....		460.0	2,322.0	2,310.0	-0.5
Mississippi .....		13.0	51.0	51.0	-
Missouri .....		91.0	369.0	373.0	1.1
Montana .....		14.0	76.0	77.0	1.3
Nebraska .....		54.0	299.0	302.0	1.0
Nevada .....		29.0	165.0	179.0	8.5
New Hampshire .....		14.0	68.0	71.0	4.4
New Jersey .....		7.0	33.0	33.0	-
New Mexico .....		323.0	2,093.0	2,102.0	0.4
New York .....		615.0	3,472.0	3,487.0	0.4
North Carolina .....		45.0	245.0	249.0	1.6
North Dakota .....		16.5	89.0	84.0	-5.6
Ohio .....		266.0	1,420.0	1,385.0	-2.5
Oklahoma .....		40.0	210.0	186.0	-11.4
Oregon .....		125.0	650.0	666.0	2.5
Pennsylvania .....		530.0	2,725.0	2,715.0	-0.4
Rhode Island .....		0.9	4.7	4.4	-6.4
South Carolina .....		16.0	72.0	71.0	-1.4
South Dakota .....		97.0	501.0	528.0	5.4
Tennessee .....		46.0	203.0	197.0	-3.0
Texas .....		463.0	2,456.0	2,678.0	9.0
Utah .....		95.0	520.0	536.0	3.1
Vermont .....		131.0	672.0	676.0	0.6
Virginia .....		93.0	451.0	458.0	1.6
Washington .....		273.0	1,636.0	1,695.0	3.6
West Virginia .....		9.0	41.0	37.0	-9.8
Wisconsin .....		1,269.0	6,996.0	7,017.0	0.3
Wyoming .....		6.0	32.7	33.0	0.9
United States .....		9,253.0	51,997.0	52,861.0	1.7

- Represents zero.

<sup>1</sup> Includes dry cows. Excludes heifers not yet fresh.

<sup>2</sup> Excludes milk sucked by calves.

<sup>3</sup> Survey was not conducted in April and July, resulting in no milk cow and milk per cow data for March through June.

# Milk Cows and Production – States and United States: Preliminary July - September 2013 and 2014

[May not add due to rounding]

State	July - September milk cows <sup>1</sup>		July - September milk production <sup>2</sup>		
	2013	2014	2013	2014	Change from 2013
	(1,000 head)	(1,000 head)	(million pounds)	(million pounds)	(percent)
Alabama .....	9.0	8.0	25.0	23.0	-8.0
Alaska .....	0.3	0.3	0.8	0.9	12.5
Arizona .....	188.0	193.0	1,014.0	1,082.0	6.7
Arkansas .....	8.0	7.5	22.0	22.0	-
California .....	1,780.0	1,779.0	9,970.0	10,264.0	2.9
Colorado .....	137.0	145.0	844.0	920.0	9.0
Connecticut .....	18.0	19.0	91.0	95.0	4.4
Delaware .....	4.7	4.8	21.6	23.0	6.5
Florida .....	123.0	123.0	541.0	575.0	6.3
Georgia .....	80.0	81.0	357.0	388.0	8.7
Hawaii .....	2.2	2.2	7.4	7.5	1.4
Idaho .....	573.0	578.0	3,453.0	3,569.0	3.4
Illinois .....	97.0	94.0	443.0	448.0	1.1
Indiana .....	177.0	179.0	939.0	989.0	5.3
Iowa .....	208.0	207.0	1,127.0	1,147.0	1.8
Kansas .....	135.0	143.0	719.0	771.0	7.2
Kentucky .....	70.0	62.0	243.0	239.0	-1.6
Louisiana .....	15.0	14.0	42.0	42.0	-
Maine .....	31.0	30.0	152.0	152.0	-
Maryland .....	50.0	49.0	232.0	238.0	2.6
Massachusetts .....	12.5	12.5	56.0	58.0	3.6
Michigan .....	381.0	394.0	2,286.0	2,454.0	7.3
Minnesota .....	464.0	460.0	2,250.0	2,268.0	0.8
Mississippi .....	13.0	12.5	39.0	40.0	2.6
Missouri .....	92.0	88.0	316.0	337.0	6.6
Montana .....	14.0	14.0	74.0	76.0	2.7
Nebraska .....	54.0	54.0	283.0	294.0	3.9
Nevada .....	29.0	28.0	161.0	171.0	6.2
New Hampshire .....	13.0	14.0	67.0	70.0	4.5
New Jersey .....	7.0	7.0	31.0	31.0	-
New Mexico .....	323.0	323.0	1,967.0	2,012.0	2.3
New York .....	610.0	615.0	3,365.0	3,494.0	3.8
North Carolina .....	46.0	45.0	219.0	228.0	4.1
North Dakota .....	17.5	16.0	84.0	79.0	-6.0
Ohio .....	271.0	266.0	1,327.0	1,359.0	2.4
Oklahoma .....	43.0	40.0	172.0	163.0	-5.2
Oregon .....	123.0	123.0	635.0	634.0	-0.2
Pennsylvania .....	533.0	530.0	2,590.0	2,650.0	2.3
Rhode Island .....	0.9	0.9	4.2	4.3	2.4
South Carolina .....	15.0	15.0	57.0	58.0	1.8
South Dakota .....	95.0	97.0	516.0	533.0	3.3
Tennessee .....	47.0	46.0	176.0	180.0	2.3
Texas .....	438.0	470.0	2,358.0	2,524.0	7.0
Utah .....	92.0	96.0	519.0	549.0	5.8
Vermont .....	134.0	132.0	646.0	671.0	3.9
Virginia .....	95.0	93.0	419.0	434.0	3.6
Washington .....	267.0	272.0	1,607.0	1,664.0	3.5
West Virginia .....	9.5	9.0	38.0	34.0	-10.5
Wisconsin .....	1,272.0	1,270.0	6,869.0	7,036.0	2.4
Wyoming .....	6.0	6.0	32.5	33.0	1.5
United States .....	9,224.0	9,268.0	49,408.0	51,134.0	3.5

- Represents zero.

<sup>1</sup> Excludes dry cows. Excludes heifers not yet fresh.

<sup>2</sup> Excludes milk sucked by calves.

## Statistical Methodology

**Survey Procedures:** Primary data used to determine these estimates were obtained from a sample of producers. Individual States maintain a list of all known milk producers and information on the size of their herd. States use all known sources of producers to ensure that their lists are as complete as possible. Generally, all large producers and a sample of small producers are included in the survey. Questionnaires are mailed to producers near the end of the month to obtain data for the first day of the month. Additional reports are obtained by telephone, as needed, to supplement the mail response. Where feasible, States utilize state and federal administrative data to estimate milk production. This eliminates duplication of data gathering by different government agencies. Indications of milk cow inventory are also obtained in the January Cattle Surveys.

**Estimation Procedures:** State offices prepare these estimates by using a combination of survey indications, historic trends, and any available administrative data. Individual State estimates are reviewed by the Agricultural Statistics Board for reasonableness.

**Revision Policy:** Milk production, milk per cow, and number of milk cows are subject to revision the following month after initial publication for monthly States or the following quarter for the quarterly States. Normally, administrative data from Federal Market Orders, State Departments of Agriculture, or other sources are the main basis for revisions. However, administrative data for all States may not be available in time for these revisions. Estimates are again subject to revisions in February each year based on additional administrative data. In the event that additional changes are necessary, a third revision is possible in February the following year. Estimates are again reviewed after data from the five-year Census of Agriculture are available. No revisions are made after that date.

**Reliability:** Since all operations with dairy animals are not included in the sample, survey estimates are subject to sampling variability. Survey results are also subject to non-sampling errors such as omissions, duplications, and mistakes in reporting, recording, and processing the data. The effects of these errors cannot be measured directly. They are minimized through rigid quality controls in the data collection process and through a careful review of all reported data for consistency and reasonableness.

To assist users in evaluating the reliability of the estimates in this report, the "Root Mean Square Error" is shown for selected items on the next page. The "Root Mean Square Error" is a statistical measure based on past performance and is computed using the differences between first and final estimates. The "Root Mean Square Error" for milk cow inventory estimates over the past 20 quarters is 0.1 percent. This means that chances are 2 out of 3 that the final estimate will not be above or below the current estimate of 9.27 million head by more than 0.1 percent. Chances are 9 out of 10 that the difference will not exceed 0.1 percent.

### Reliability of Quarterly Milk Production Estimates

[Based on data for the past 20 quarters]

Item	Root mean square error	90 percent confidence level	Difference between first and latest estimate				
			Average	Smallest	Largest	Quarters	
						Below latest	Above latest
	(percent)	(percent)	(1,000)	(1,000)	(1,000)	(number)	(number)
Milk production .....	0.1	0.2	40	3	110	14	6
All milk cows .....	0.1	0.1	4	0	10	9	7

## Information Contacts

Listed below are the commodity specialists in the Livestock Branch of the National Agricultural Statistics Service to contact for additional information. E-mail inquiries may be sent to [nass@nass.usda.gov](mailto:nass@nass.usda.gov).

Dan Kerestes, Chief, Livestock Branch .....	(202) 720-3570
Scott Hollis, Head, Livestock Section .....	(202) 690-2424
Travis Averill – Cattle, Cattle on Feed .....	(202) 720-3040
Doug Bounds – Hogs and Pigs .....	(202) 720-3106
Donnie Fike – Dairy Products .....	(202) 690-3236
Sherry Bertramsen – Livestock Slaughter .....	(202) 720-3240
Mike Miller – Milk Production and Milk Cows .....	(202) 720-3278
Evan Schulz – Sheep and Goats .....	(202) 720-6147

## Access to NASS Reports

For your convenience, you may access NASS reports and products the following ways:

- All reports are available electronically, at no cost, on the NASS web site: <http://www.nass.usda.gov>
- Both national and state specific reports are available via a free e-mail subscription. To set-up this free subscription, visit <http://www.nass.usda.gov> and in the “Follow NASS” box under “Receive reports by Email,” click on “National” or “State” to select the reports you would like to receive.

For more information on NASS surveys and reports, call the NASS Agricultural Statistics Hotline at (800) 727-9540, 7:30 a.m. to 4:00 p.m. ET, or e-mail: [nass@nass.usda.gov](mailto:nass@nass.usda.gov).

The U.S. Department of Agriculture (USDA) prohibits discrimination against its customers, employees, and applicants for employment on the basis of race, color, national origin, age, disability, sex, gender identity, religion, reprisal, and where applicable, political beliefs, marital status, familial or parental status, sexual orientation, or all or part of an individual's income is derived from any public assistance program, or protected genetic information in employment or in any program or activity conducted or funded by the Department. (Not all prohibited bases will apply to all programs and/or employment activities.)

If you wish to file a Civil Rights program complaint of discrimination, complete the [USDA Program Discrimination Complaint Form](#) (PDF), found online at [http://www.ascr.usda.gov/complaint\\_filing\\_cust.html](http://www.ascr.usda.gov/complaint_filing_cust.html), or at any USDA office, or call (866) 632-9992 to request the form. You may also write a letter containing all of the information requested in the form. Send your completed complaint form or letter to us by mail at U.S. Department of Agriculture, Director, Office of Adjudication, 1400 Independence Avenue, S.W., Washington, D.C. 20250-9410, by fax (202) 690-7442 or email at [program.intake@usda.gov](mailto:program.intake@usda.gov).