



ISSN: 1949-1557

Released July 21, 2015, by the National Agricultural Statistics Service (NASS), Agricultural Statistics Board, United States Department of Agriculture (USDA).

## June Milk Production up 0.7 Percent

**Milk production** in the 23 major States during June totaled 16.4 billion pounds, up 0.7 percent from June 2014. May revised production at 17.2 billion pounds, was up 1.5 percent from May 2014. The May revision represented an increase of 12 million pounds or 0.1 percent from last month's preliminary production estimate.

**Production per cow** in the 23 major States averaged 1,895 pounds for June, no change from the record high of June 2014. The 23 State series began in 2003.

**The number of milk cows** on farms in the 23 major States was 8.63 million head, 56,000 head more than June 2014, but 2,000 head fewer than May 2015.

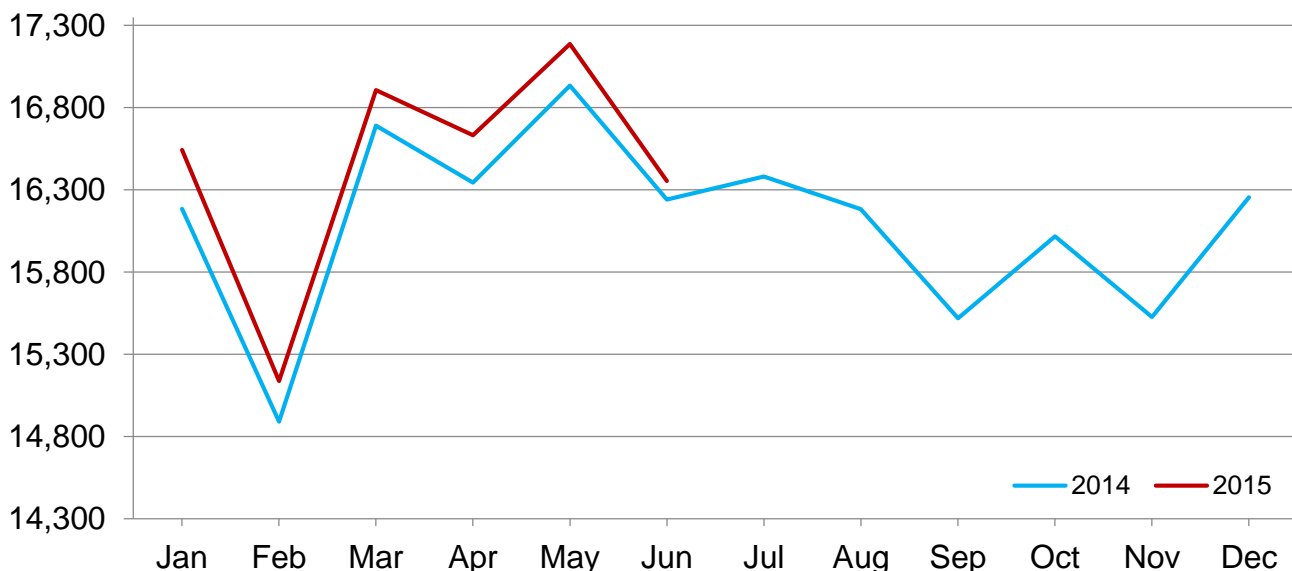
## April - June Milk Production up 1.4 Percent

**Milk production** in the United States during the April - June quarter totaled 53.6 billion pounds, up 1.4 percent from the April - June quarter last year.

**The average number of milk cows** in the United States during the quarter was 9.32 million head, 14,000 head more than the January - March quarter, and 66,000 head more than the same period last year.

## Monthly Milk Production – 23 Selected States

Million pounds



## Milk Cows and Production by Quarter – United States: 2014-2015

[May not add due to rounding]

Quarter	Milk cows <sup>1</sup>		Milk per cow <sup>2</sup>		Milk production <sup>2</sup>		
	2014	2015	2014	2015	2014	2015	Change from 2014
	(1,000 Head)	(1,000 Head)	(Pounds)	(Pounds)	(Million Pounds)	(Million Pounds)	(Percent)
January-March .....	9,216	9,305	5,536	5,583	51,020	51,949	1.8
April-June .....	9,253	9,319	5,717	5,753	52,897	53,615	1.4
July-September .....	9,270		5,520		51,173		
October-December .....	9,287		5,487		50,956		
Annual .....	9,257		22,258		206,046		

<sup>1</sup> Includes dry cows. Excludes heifers not yet fresh.

<sup>2</sup> Excludes milk sucked by calves.

## Milk Cows and Production By Month – 23 Selected States: 2014-2015

Month	Milk cows <sup>1</sup>		Milk per cow <sup>2</sup>		Milk production <sup>2</sup>		
	2014	2015	2014	2015	2014	2015	Change from 2014
	(1,000 head)	(1,000 head)	(pounds)	(pounds)	(million pounds)	(million pounds)	(percent)
January .....	8,516	8,620	1,901	1,919	16,186	16,544	2.2
February .....	8,516	8,620	1,749	1,756	14,892	15,139	1.7
March .....	8,530	8,622	1,957	1,961	16,690	16,907	1.3
April .....	8,547	8,626	1,912	1,928	16,344	16,633	1.8
May .....	8,558	8,630	1,979	1,992	16,934	17,187	1.5
June .....	8,572	8,628	1,895	1,895	16,241	16,354	0.7
July .....	8,583		1,909		16,381		
August .....	8,585		1,885		16,184		
September .....	8,593		1,806		15,519		
October .....	8,594		1,864		16,017		
November .....	8,598		1,806		15,527		
December .....	8,611		1,888		16,256		
Annual .....	8,567		22,551		193,171		

<sup>1</sup> Includes dry cows. Excludes heifers not yet fresh.

<sup>2</sup> Excludes milk sucked by calves.

## Estimated Milk Cows and Production By Month – United States: 2014-2015

Month	Milk cows <sup>1</sup>		Milk per cow <sup>2</sup>		Milk production <sup>2</sup>		
	2014	2015	2014	2015	2014	2015	Change from 2014
	(1,000 head)	(1,000 head)	(pounds)	(pounds)	(million pounds)	(million pounds)	(percent)
January .....	9,212	9,304	1,876	1,900	17,284	17,680	2.3
February .....	9,212	9,304	1,727	1,740	15,907	16,189	1.8
March .....	9,223	9,306	1,933	1,943	17,829	18,080	1.4
April .....	9,240	9,315	1,892	1,911	17,480	17,800	1.8
May .....	9,252	9,324	1,956	1,970	18,094	18,370	1.5
June .....	9,267	9,317	1,869	1,872	17,323	17,445	0.7
July .....	9,268		1,881		17,435		
August .....	9,268		1,858		17,224		
September .....	9,274		1,781		16,514		
October .....	9,277		1,840		17,071		
November .....	9,284		1,783		16,551		
December .....	9,299		1,864		17,334		
Annual .....	9,257		22,258		206,046		

<sup>1</sup> Includes dry cows. Excludes heifers not yet fresh.

<sup>2</sup> Excludes milk sucked by calves.

## Milk Cows and Production – 23 Selected States: June 2014 and 2015

[May not add due to rounding]

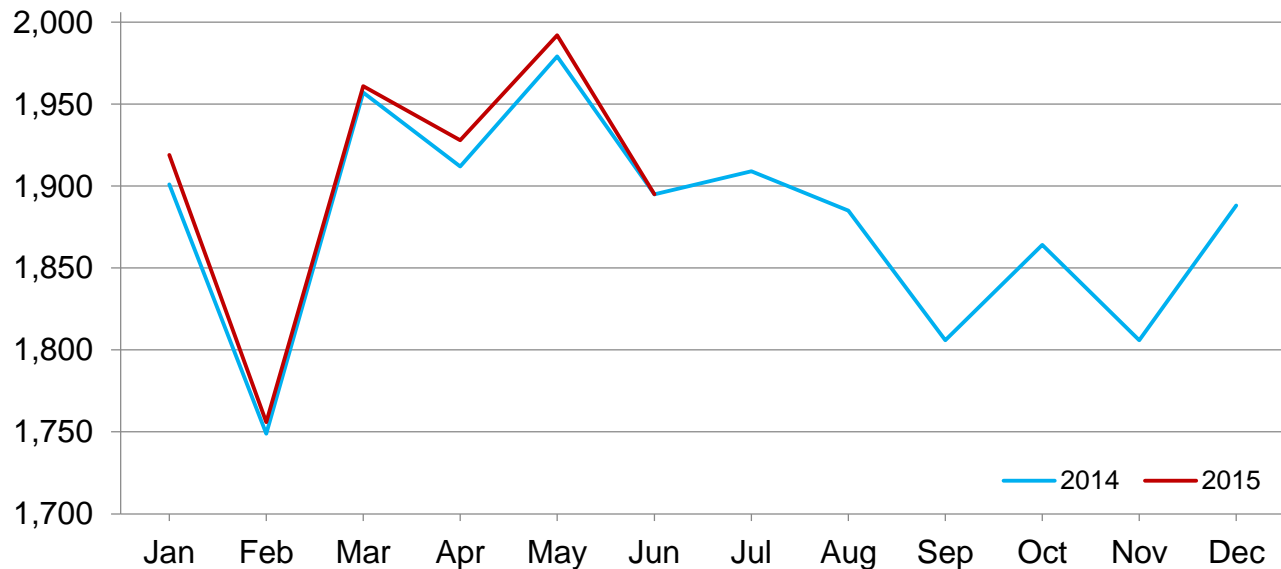
State	Milk cows <sup>1</sup>		Milk per cow <sup>2</sup>		Milk production <sup>2</sup>		Change from 2014
	2014	2015	2014	2015	2014	2015	
	(1,000 head)	(1,000 head)	(pounds)	(pounds)	(million pounds)	(million pounds)	(percent)
Arizona .....	193	195	2,065	2,085	399	407	2.0
California .....	1,779	1,778	1,995	1,910	3,549	3,396	-4.3
Colorado .....	145	145	2,105	2,160	305	313	2.6
Florida .....	123	125	1,770	1,785	218	223	2.3
Idaho .....	577	586	2,065	2,055	1,192	1,204	1.0
Illinois .....	94	94	1,640	1,680	154	158	2.6
Indiana .....	178	181	1,840	1,860	328	337	2.7
Iowa .....	207	212	1,860	1,910	385	405	5.2
Kansas .....	142	143	1,830	1,835	260	262	0.8
Michigan .....	387	408	2,085	2,120	807	865	7.2
Minnesota .....	460	460	1,645	1,715	757	789	4.2
New Mexico .....	323	323	2,130	2,035	688	657	-4.5
New York .....	615	618	1,885	1,930	1,159	1,193	2.9
Ohio .....	266	266	1,720	1,710	458	455	-0.7
Oregon .....	125	123	1,735	1,705	217	210	-3.2
Pennsylvania .....	530	530	1,665	1,715	882	909	3.1
South Dakota .....	97	106	1,805	1,850	175	196	12.0
Texas .....	468	462	1,850	1,835	866	848	-2.1
Utah .....	95	96	1,945	1,990	185	191	3.2
Vermont .....	131	132	1,720	1,710	225	226	0.4
Virginia .....	93	91	1,570	1,620	146	147	0.7
Washington .....	274	276	2,050	2,030	562	560	-0.4
Wisconsin .....	1,270	1,278	1,830	1,880	2,324	2,403	3.4
23-State Total .....	8,572	8,628	1,895	1,895	16,241	16,354	0.7

<sup>1</sup> Includes dry cows. Excludes heifers not yet fresh.

<sup>2</sup> Excludes milk sucked by calves.

## Monthly Milk per Cow – 23 Selected States

Pounds



## Milk Cows and Production – 23 Selected States: May 2014 and 2015

[May not add due to rounding]

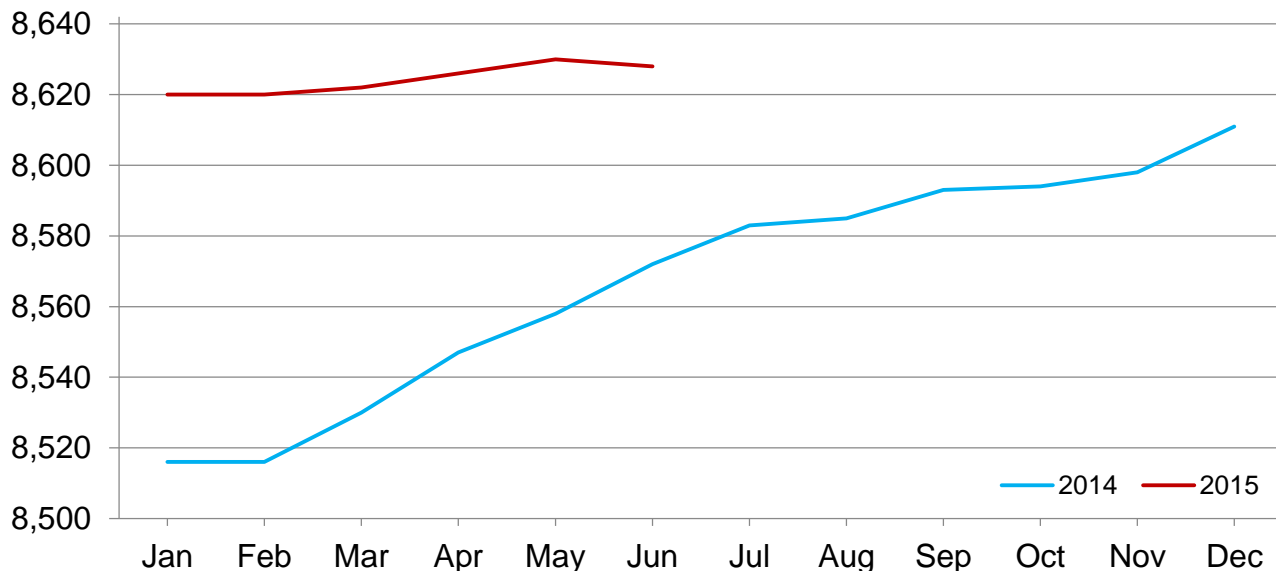
	Milk cows <sup>1</sup>		Milk per cow <sup>2</sup>		Milk production <sup>2</sup>		Change from 2014
	2014	2015	2014	2015	2014	2015	
	(1,000 head)	(1,000 head)	(pounds)	(pounds)	(million pounds)	(million pounds)	(percent)
Arizona .....	192	195	2,225	2,210	427	431	0.9
California .....	1,779	1,778	2,110	2,055	3,754	3,654	-2.7
Colorado .....	144	145	2,165	2,200	312	319	2.2
Florida .....	123	125	1,885	1,920	232	240	3.4
Idaho .....	574	586	2,090	2,105	1,200	1,234	2.8
Illinois .....	94	95	1,765	1,790	166	170	2.4
Indiana .....	177	181	1,935	1,935	342	350	2.3
Iowa .....	207	212	1,965	2,015	407	427	4.9
Kansas .....	141	144	1,950	1,965	275	283	2.9
Michigan .....	384	407	2,145	2,195	824	893	8.4
Minnesota .....	460	460	1,715	1,795	789	826	4.7
New Mexico .....	323	323	2,240	2,190	724	707	-2.3
New York .....	615	618	1,935	1,990	1,190	1,230	3.4
Ohio .....	266	267	1,800	1,785	479	477	-0.4
Oregon .....	125	123	1,825	1,790	228	220	-3.5
Pennsylvania .....	530	530	1,760	1,815	933	962	3.1
South Dakota .....	97	105	1,855	1,905	180	200	11.1
Texas .....	465	462	1,990	1,975	925	912	-1.4
Utah .....	95	96	1,990	2,040	189	196	3.7
Vermont .....	131	132	1,755	1,775	230	234	1.7
Virginia .....	93	92	1,700	1,730	158	159	0.6
Washington .....	274	276	2,110	2,090	578	577	-0.2
Wisconsin .....	1,269	1,278	1,885	1,945	2,392	2,486	3.9
23-State Total .....	8,558	8,630	1,979	1,992	16,934	17,187	1.5

<sup>1</sup> Includes dry cows. Excludes heifers not yet fresh.

<sup>2</sup> Excludes milk sucked by calves.

## Monthly Milk Cows – 23 Selected States

Thousand head



## Milk Cows and Production – States and United States: Revised January - March 2014 and 2015

[May not add due to rounding]

State	January - March milk cows <sup>1</sup>		January - March milk production <sup>2</sup>		
	2014	2015	2014	2015	Change from 2014
	(1,000 head)	(1,000 head)	(million pounds)	(million pounds)	(percent)
Alabama .....	9.0	8.0	30.0	29.0	-3.3
Alaska .....	0.3	0.3	0.8	0.9	12.5
Arizona .....	192.0	195.0	1,202.0	1,238.0	3.0
Arkansas .....	7.5	7.0	24.0	25.0	4.2
California .....	1,781.0	1,779.0	10,835.0	10,513.0	-3.0
Colorado .....	140.0	145.0	852.0	914.0	7.3
Connecticut .....	19.0	19.0	96.0	98.0	2.1
Delaware .....	4.7	4.9	24.5	25.5	4.1
Florida .....	123.0	124.0	671.0	699.0	4.2
Georgia .....	81.0	81.0	443.0	468.0	5.6
Hawaii .....	2.3	2.2	7.4	8.3	12.2
Idaho .....	568.0	581.0	3,324.0	3,390.0	2.0
Illinois .....	95.0	95.0	471.0	482.0	2.3
Indiana .....	177.0	181.0	944.0	994.0	5.3
Iowa .....	205.0	210.0	1,139.0	1,194.0	4.8
Kansas .....	137.0	143.0	750.0	803.0	7.1
Kentucky .....	64.0	62.0	257.0	279.0	8.6
Louisiana .....	15.0	14.0	58.0	58.0	-
Maine .....	30.0	30.0	145.0	144.0	-0.7
Maryland .....	50.0	49.0	252.0	247.0	-2.0
Massachusetts .....	12.5	12.0	59.0	54.0	-8.5
Michigan .....	381.0	403.0	2,291.0	2,470.0	7.8
Minnesota .....	460.0	460.0	2,261.0	2,345.0	3.7
Mississippi .....	13.0	12.0	52.0	53.0	1.9
Missouri .....	90.0	87.0	336.0	345.0	2.7
Montana .....	14.0	14.0	75.0	74.0	-1.3
Nebraska .....	53.0	55.0	292.0	315.0	7.9
Nevada .....	29.0	28.0	164.0	175.0	6.7
New Hampshire .....	14.0	14.0	71.0	70.0	-1.4
New Jersey .....	7.0	7.0	32.0	33.0	3.1
New Mexico .....	323.0	323.0	2,026.0	1,962.0	-3.2
New York .....	615.0	616.0	3,333.0	3,404.0	2.1
North Carolina .....	45.0	47.0	245.0	257.0	4.9
North Dakota .....	17.0	16.0	81.0	80.0	-1.2
Ohio .....	266.0	268.0	1,325.0	1,358.0	2.5
Oklahoma .....	40.0	40.0	178.0	180.0	1.1
Oregon .....	124.0	125.0	638.0	636.0	-0.3
Pennsylvania .....	531.0	530.0	2,663.0	2,719.0	2.1
Rhode Island .....	0.9	0.9	4.2	4.1	-2.4
South Carolina .....	16.0	15.0	71.0	72.0	1.4
South Dakota .....	95.0	101.0	507.0	553.0	9.1
Tennessee .....	46.0	46.0	188.0	196.0	4.3
Texas .....	449.0	467.0	2,531.0	2,602.0	2.8
Utah .....	95.0	96.0	516.0	549.0	6.4
Vermont .....	132.0	132.0	654.0	657.0	0.5
Virginia .....	93.0	93.0	449.0	448.0	-0.2
Washington .....	269.0	277.0	1,603.0	1,632.0	1.8
West Virginia .....	9.0	9.0	35.0	36.0	2.9
Wisconsin .....	1,270.0	1,275.0	6,783.0	7,028.0	3.6
Wyoming .....	6.0	6.0	31.5	32.0	1.6
United States .....	9,216.0	9,305.0	51,020.0	51,949.0	1.8

- Represents zero.

<sup>1</sup> Includes dry cows. Excludes heifers not yet fresh.

<sup>2</sup> Excludes milk sucked by calves.

## Milk Cows and Production – States and United States: Preliminary April - June 2014 and 2015

[May not add due to rounding]

State	April - June milk cows <sup>1</sup>		April - June milk production <sup>2</sup>		
	2014	2015	2014	2015	Change from 2014
	(1,000 head)	(1,000 head)	(million pounds)	(million pounds)	(percent)
Alabama .....	8.5	8.0	31.0	29.0	-6.5
Alaska .....	0.3	0.3	0.9	0.9	-
Arizona .....	192.0	195.0	1,250.0	1,264.0	1.1
Arkansas .....	7.5	7.0	28.0	27.0	-3.6
California .....	1,779.0	1,778.0	10,979.0	10,652.0	-3.0
Colorado .....	144.0	145.0	914.0	947.0	3.6
Connecticut .....	19.0	19.5	97.0	102.0	5.2
Delaware .....	4.8	5.0	24.9	25.9	4.0
Florida .....	123.0	125.0	680.0	699.0	2.8
Georgia .....	81.0	82.0	452.0	468.0	3.5
Hawaii .....	2.2	2.2	7.8	8.4	7.7
Idaho .....	574.0	586.0	3,533.0	3,611.0	2.2
Illinois .....	94.0	95.0	482.0	495.0	2.7
Indiana .....	177.0	181.0	995.0	1,023.0	2.8
Iowa .....	207.0	212.0	1,179.0	1,241.0	5.3
Kansas .....	141.0	144.0	799.0	825.0	3.3
Kentucky .....	64.0	62.0	268.0	288.0	7.5
Louisiana .....	15.0	14.0	57.0	52.0	-8.8
Maine .....	30.0	30.0	152.0	149.0	-2.0
Maryland .....	50.0	49.0	254.0	255.0	0.4
Massachusetts .....	12.5	12.0	61.0	56.0	-8.2
Michigan .....	385.0	406.0	2,420.0	2,606.0	7.7
Minnesota .....	460.0	460.0	2,310.0	2,406.0	4.2
Mississippi .....	13.0	12.0	51.0	48.0	-5.9
Missouri .....	91.0	88.0	373.0	370.0	-0.8
Montana .....	14.0	14.0	76.0	77.0	1.3
Nebraska .....	54.0	56.0	302.0	326.0	7.9
Nevada .....	29.0	29.0	176.0	182.0	3.4
New Hampshire .....	14.0	14.0	72.0	72.0	-
New Jersey .....	7.0	7.0	33.0	33.0	-
New Mexico .....	323.0	323.0	2,102.0	2,044.0	-2.8
New York .....	615.0	618.0	3,484.0	3,580.0	2.8
North Carolina .....	45.0	46.0	249.0	255.0	2.4
North Dakota .....	16.5	16.0	84.0	85.0	1.2
Ohio .....	266.0	267.0	1,396.0	1,396.0	-
Oklahoma .....	40.0	40.0	186.0	184.0	-1.1
Oregon .....	125.0	123.0	666.0	646.0	-3.0
Pennsylvania .....	530.0	530.0	2,720.0	2,796.0	2.8
Rhode Island .....	0.9	0.9	4.5	4.0	-11.1
South Carolina .....	16.0	15.0	71.0	71.0	-
South Dakota .....	97.0	105.0	528.0	586.0	11.0
Tennessee .....	46.0	46.0	197.0	202.0	2.5
Texas .....	464.0	462.0	2,679.0	2,656.0	-0.9
Utah .....	95.0	96.0	554.0	576.0	4.0
Vermont .....	131.0	132.0	677.0	682.0	0.7
Virginia .....	93.0	92.0	458.0	461.0	0.7
Washington .....	273.0	276.0	1,695.0	1,697.0	0.1
West Virginia .....	9.0	9.0	37.0	37.0	-
Wisconsin .....	1,269.0	1,278.0	7,019.0	7,285.0	3.8
Wyoming .....	6.0	6.0	33.0	34.0	3.0
United States .....	9,253.0	9,319.0	52,897.0	53,615.0	1.4

- Represents zero.

<sup>1</sup> Excludes dry cows. Excludes heifers not yet fresh.

<sup>2</sup> Excludes milk sucked by calves.

## Statistical Methodology

**Survey Procedures:** Primary data used to determine these estimates were obtained from a sample of producers. Individual States maintain a list of all known milk producers and information on the size of their herd. States use all known sources of producers to ensure that their lists are as complete as possible. Generally, all large producers and a sample of small producers are included in the survey. Questionnaires are mailed to producers near the end of the month to obtain data for the first day of the month. Additional reports are obtained by telephone, as needed, to supplement the mail response. Where feasible, States utilize state and federal administrative data to estimate milk production. This eliminates duplication of data gathering by different government agencies. Indications of milk cow inventory are also obtained in the January Cattle Surveys.

**Estimation Procedures:** State offices prepare these estimates by using a combination of survey indications, historic trends, and any available administrative data. Individual State estimates are reviewed by the Agricultural Statistics Board for reasonableness.

**Revision Policy:** Milk production, milk per cow, and number of milk cows are subject to revision the following month after initial publication for monthly States or the following quarter for the quarterly States. Normally, administrative data from Federal Market Orders, State Departments of Agriculture, or other sources are the main basis for revisions. However, administrative data for all States may not be available in time for these revisions. Estimates are again subject to revisions in February each year based on additional administrative data. In the event that additional changes are necessary, a third revision is possible in February the following year. Estimates are again reviewed after data from the five-year Census of Agriculture are available. No revisions are made after that date.

**Reliability:** Since all operations with dairy animals are not included in the sample, survey estimates are subject to sampling variability. Survey results are also subject to non-sampling errors such as omissions, duplications, and mistakes in reporting, recording, and processing the data. The effects of these errors cannot be measured directly. They are minimized through rigid quality controls in the data collection process and through a careful review of all reported data for consistency and reasonableness.

To assist users in evaluating the reliability of the estimates in this report, the "Root Mean Square Error" is shown for selected items on the next page. The "Root Mean Square Error" is a statistical measure based on past performance and is computed using the differences between first and final estimates. The "Root Mean Square Error" for milk cow inventory estimates over the past 20 quarters is 0.1 percent. This means that chances are 2 out of 3 that the final estimate will not be above or below the current estimate of 9.32 million head by more than 0.1 percent. Chances are 9 out of 10 that the difference will not exceed 0.1 percent.

### Reliability of Quarterly Milk Production Estimates

[Based on data for the past 20 quarters]

Item	Root mean square error	90 percent confidence level	Difference between first and latest estimate				
			Average	Smallest	Largest	Quarters	
						Below latest	Above latest
	(percent)	(percent)	(1,000)	(1,000)	(1,000)	(number)	(number)
Milk production .....	0.1	0.2	52	2	141	17	3
All milk cows .....	0.1	0.1	5	0	13	14	4

## Information Contacts

Listed below are the commodity specialists in the Livestock Branch of the National Agricultural Statistics Service to contact for additional information. E-mail inquiries may be sent to [nass@nass.usda.gov](mailto:nass@nass.usda.gov).

Dan Kerestes, Chief, Livestock Branch .....	(202) 720-3570
Scott Hollis, Head, Livestock Section .....	(202) 690-2424
Travis Averill – Cattle, Cattle on Feed .....	(202) 720-3040
Sherry Bertramsen – Livestock Slaughter .....	(202) 720-3240
Doug Bounds – Hogs and Pigs .....	(202) 720-3106
Donnie Fike – Dairy Products .....	(202) 690-3236
Mike Miller – Milk Production and Milk Cows .....	(202) 720-3278
Vacant – Sheep and Goats .....	(202) 720-3570

## Access to NASS Reports

For your convenience, you may access NASS reports and products the following ways:

- All reports are available electronically, at no cost, on the NASS web site: <http://www.nass.usda.gov>
- Both national and state specific reports are available via a free e-mail subscription. To set-up this free subscription, visit <http://www.nass.usda.gov> and in the “Follow NASS” box under “Receive reports by Email,” click on “National” or “State” to select the reports you would like to receive.

For more information on NASS surveys and reports, call the NASS Agricultural Statistics Hotline at (800) 727-9540, 7:30 a.m. to 4:00 p.m. ET, or e-mail: [nass@nass.usda.gov](mailto:nass@nass.usda.gov).

The U.S. Department of Agriculture (USDA) prohibits discrimination against its customers, employees, and applicants for employment on the basis of race, color, national origin, age, disability, sex, gender identity, religion, reprisal, and where applicable, political beliefs, marital status, familial or parental status, sexual orientation, or all or part of an individual's income is derived from any public assistance program, or protected genetic information in employment or in any program or activity conducted or funded by the Department. (Not all prohibited bases will apply to all programs and/or employment activities.)

If you wish to file a Civil Rights program complaint of discrimination, complete the [USDA Program Discrimination Complaint Form](#) (PDF), found online at [http://www.ascr.usda.gov/complaint\\_filing\\_cust.html](http://www.ascr.usda.gov/complaint_filing_cust.html), or at any USDA office, or call (866) 632-9992 to request the form. You may also write a letter containing all of the information requested in the form. Send your completed complaint form or letter to us by mail at U.S. Department of Agriculture, Director, Office of Adjudication, 1400 Independence Avenue, S.W., Washington, D.C. 20250-9410, by fax (202) 690-7442 or email at [program.intake@usda.gov](mailto:program.intake@usda.gov).