



ISSN: 1949-1557

Released September 18, 2015, by the National Agricultural Statistics Service (NASS), Agricultural Statistics Board, United States Department of Agriculture (USDA).

August Milk Production up 0.8 Percent

Milk production in the 23 major States during August totaled 16.3 billion pounds, up 0.8 percent from August 2014. July revised production at 16.6 billion pounds, was up 1.3 percent from July 2014. The July revision represented an increase of 5.0 million pounds or less than 0.1 percent from last month's preliminary production estimate.

Production per cow in the 23 major States averaged 1,891 pounds for August, 6 pounds above August 2014. This is the highest production per cow for the month of August since the 23 State series began in 2003.

The number of milk cows on farms in the 23 major States was 8.63 million head, 43,000 head more than August 2014, but unchanged from July 2015.

August Milk Production in the United States up 0.8 Percent

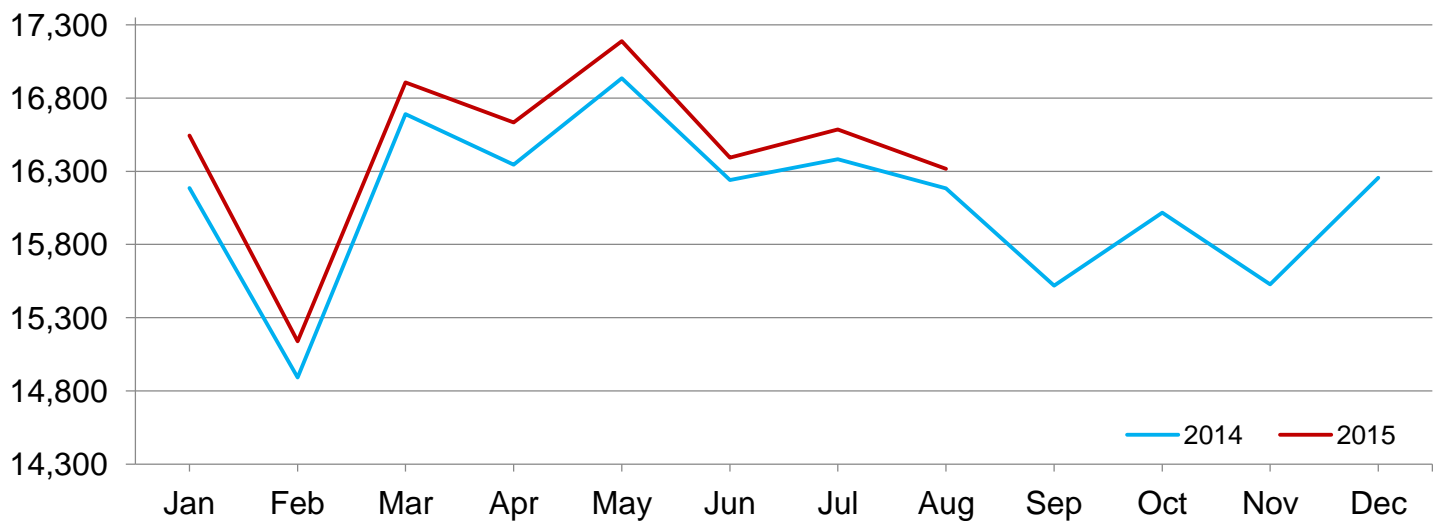
Milk production in the United States during August totaled 17.4 billion pounds, up 0.8 percent from August 2014.

Production per cow in the United States averaged 1,863 pounds for August, 5 pounds above August 2014.

The number of milk cows on farms in the United States was 9.32 million head, 53,000 head more than August 2014, but unchanged from July 2015.

Monthly Milk Production – 23 Selected States

Million pounds



Milk Cows and Production by Quarter – United States: 2014-2015

[May not add due to rounding]

Quarter	Milk cows ¹		Milk per cow ²		Milk production ²		
	2014	2015	2014	2015	2014	2015	Change from 2014
	(1,000 head)	(1,000 head)	(pounds)	(pounds)	(million pounds)	(million pounds)	(percent)
January-March	9,216	9,305	5,536	5,583	51,020	51,949	1.8
April-June	9,253	9,320	5,717	5,757	52,897	53,655	1.4
July-September	9,270		5,520		51,173		
October-December	9,287		5,487		50,956		
Annual	9,257		22,258		206,046		

¹ Includes dry cows. Excludes heifers not yet fresh.

² Excludes milk sucked by calves.

Milk Cows and Production By Month – 23 Selected States: 2014-2015

Month	Milk cows ¹		Milk per cow ²		Milk production ²		
	2014	2015	2014	2015	2014	2015	Change from 2014
	(1,000 head)	(1,000 head)	(pounds)	(pounds)	(million pounds)	(million pounds)	(percent)
January	8,516	8,620	1,901	1,919	16,186	16,544	2.2
February	8,516	8,620	1,749	1,756	14,892	15,139	1.7
March	8,530	8,622	1,957	1,961	16,690	16,907	1.3
April	8,547	8,626	1,912	1,928	16,344	16,633	1.8
May	8,558	8,630	1,979	1,992	16,934	17,187	1.5
June	8,572	8,628	1,895	1,900	16,241	16,394	0.9
July	8,583	8,628	1,909	1,922	16,381	16,586	1.3
August	8,585	8,628	1,885	1,891	16,184	16,316	0.8
September	8,593		1,806		15,519		
October	8,594		1,864		16,017		
November	8,598		1,806		15,527		
December	8,611		1,888		16,256		
Annual	8,567		22,551		193,171		

¹ Includes dry cows. Excludes heifers not yet fresh.

² Excludes milk sucked by calves.

Estimated Milk Cows and Production By Month – United States: 2014-2015

Month	Milk cows ¹		Milk per cow ²		Milk production ²		
	2014	2015	2014	2015	2014	2015	Change from 2014
	(1,000 head)	(1,000 head)	(pounds)	(pounds)	(million pounds)	(million pounds)	(percent)
January	9,212	9,304	1,876	1,900	17,284	17,680	2.3
February	9,212	9,304	1,727	1,740	15,907	16,189	1.8
March	9,223	9,306	1,933	1,943	17,829	18,080	1.4
April	9,240	9,315	1,892	1,911	17,480	17,800	1.8
May	9,252	9,324	1,956	1,970	18,094	18,370	1.5
June	9,267	9,321	1,869	1,876	17,323	17,485	0.9
July	9,268	9,321	1,881	1,894	17,435	17,655	1.3
August	9,268	9,321	1,858	1,863	17,224	17,366	0.8
September	9,274		1,781		16,514		
October	9,277		1,840		17,071		
November	9,284		1,783		16,551		
December	9,299		1,864		17,334		
Annual	9,257		22,258		206,046		

¹ Includes dry cows. Excludes heifers not yet fresh.

² Excludes milk sucked by calves.

Milk Cows and Production – 23 Selected States: August 2014 and 2015

[May not add due to rounding]

State	Milk cows ¹		Milk per cow ²		Milk production ²		Change from 2014
	2014	2015	2014	2015	2014	2015	
	(1,000 head)	(1,000 head)	(pounds)	(pounds)	(million pounds)	(million pounds)	(percent)
Arizona	193	195	1,915	1,940	370	378	2.2
California	1,779	1,778	1,940	1,875	3,451	3,334	-3.4
Colorado	145	145	2,135	2,220	310	322	3.9
Florida	123	125	1,565	1,560	192	195	1.6
Idaho	579	585	2,095	2,090	1,213	1,223	0.8
Illinois	94	94	1,565	1,600	147	150	2.0
Indiana	179	181	1,830	1,840	328	333	1.5
Iowa	208	211	1,855	1,900	386	401	3.9
Kansas	143	144	1,810	1,805	259	260	0.4
Michigan	394	409	2,115	2,120	833	867	4.1
Minnesota	460	460	1,660	1,740	764	800	4.7
New Mexico	323	323	2,100	2,010	678	649	-4.3
New York	615	619	1,915	1,950	1,178	1,207	2.5
Ohio	266	266	1,720	1,750	458	466	1.7
Oregon	123	121	1,725	1,700	212	206	-2.8
Pennsylvania	530	530	1,680	1,685	890	893	0.3
South Dakota	97	107	1,855	1,905	180	204	13.3
Texas	470	462	1,785	1,790	839	827	-1.4
Utah	96	96	1,990	1,990	191	191	-
Vermont	132	132	1,725	1,700	228	224	-1.8
Virginia	93	91	1,580	1,595	147	145	-1.4
Washington	272	274	2,060	2,035	560	558	-0.4
Wisconsin	1,271	1,280	1,865	1,940	2,370	2,483	4.8
23-State Total	8,585	8,628	1,885	1,891	16,184	16,316	0.8

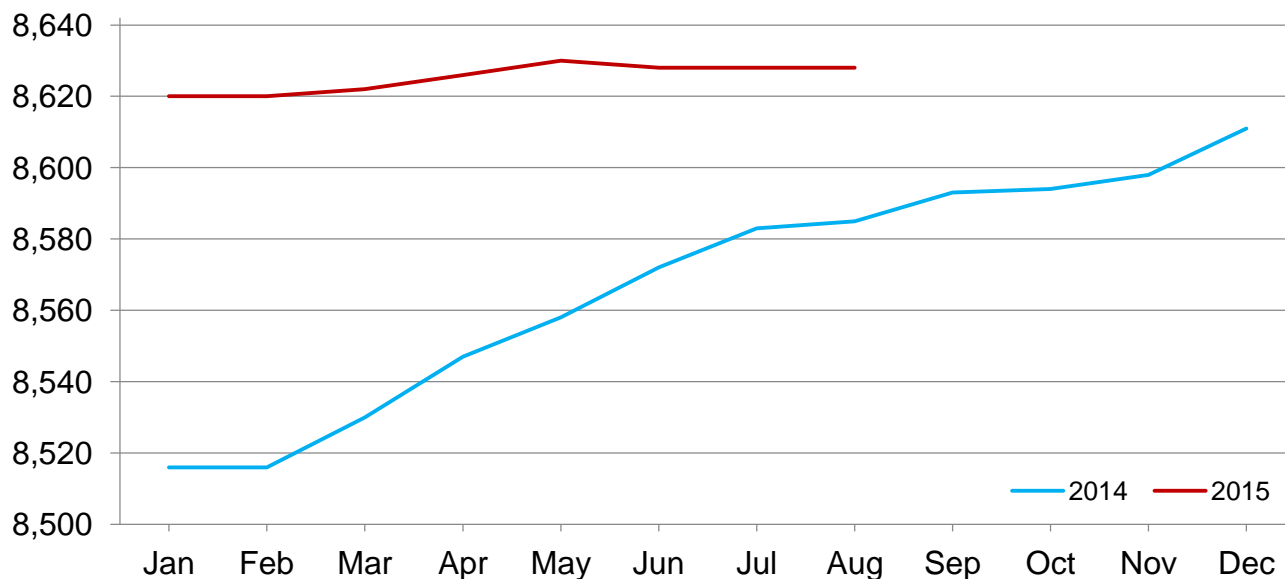
- Represents zero.

¹ Includes dry cows. Excludes heifers not yet fresh.

² Excludes milk sucked by calves.

Monthly Milk Cows – 23 Selected States

Thousand head



Milk Cows and Production – 23 Selected States: July 2014 and 2015

[May not add due to rounding]

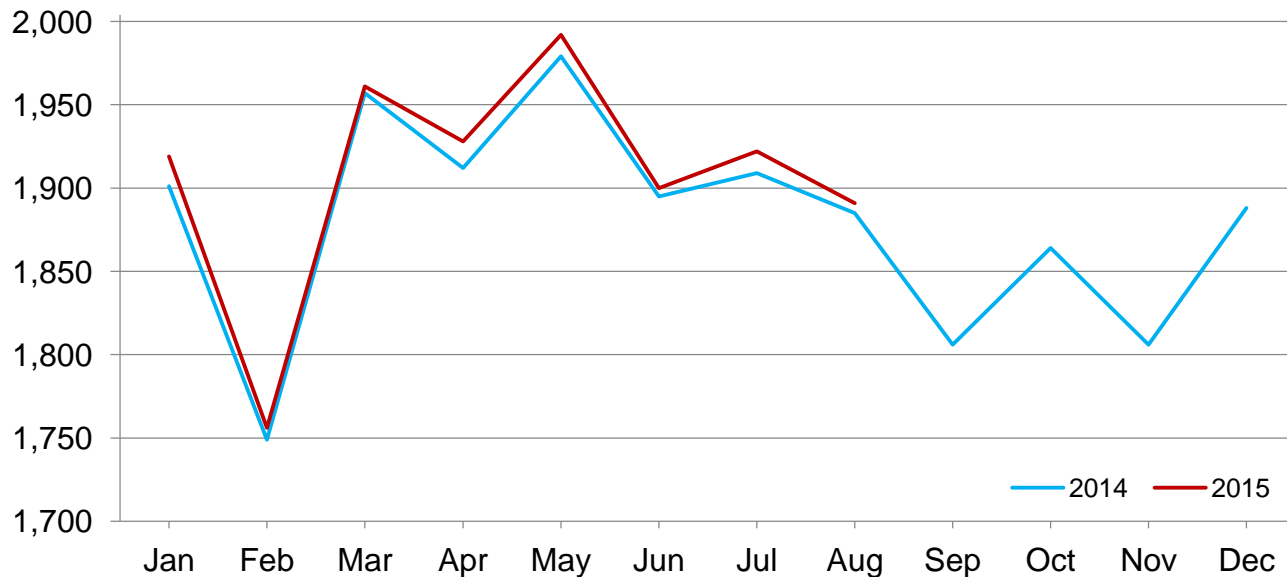
	Milk cows ¹		Milk per cow ²		Milk production ²		Change from 2014
	2014	2015	2014	2015	2014	2015	
	(1,000 head)	(1,000 head)	(pounds)	(pounds)	(million pounds)	(million pounds)	(percent)
Arizona	193	195	1,960	1,985	378	387	2.4
California	1,779	1,778	1,980	1,915	3,522	3,405	-3.3
Colorado	145	145	2,150	2,220	312	322	3.2
Florida	123	125	1,715	1,710	211	214	1.4
Idaho	579	585	2,115	2,100	1,225	1,229	0.3
Illinois	94	94	1,640	1,670	154	157	1.9
Indiana	179	181	1,830	1,855	328	336	2.4
Iowa	208	211	1,885	1,915	392	404	3.1
Kansas	142	144	1,845	1,835	262	264	0.8
Michigan	394	409	2,120	2,170	835	888	6.3
Minnesota	460	460	1,670	1,760	768	810	5.5
New Mexico	323	323	2,130	2,040	688	659	-4.2
New York	615	619	1,920	1,970	1,181	1,219	3.2
Ohio	266	266	1,745	1,760	464	468	0.9
Oregon	123	121	1,755	1,725	216	209	-3.2
Pennsylvania	530	530	1,690	1,730	896	917	2.3
South Dakota	97	107	1,845	1,895	179	203	13.4
Texas	470	462	1,840	1,850	865	855	-1.2
Utah	95	96	2,000	2,020	190	194	2.1
Vermont	132	132	1,730	1,740	228	230	0.9
Virginia	93	91	1,580	1,630	147	148	0.7
Washington	272	274	2,070	2,040	563	559	-0.7
Wisconsin	1,271	1,280	1,870	1,960	2,377	2,509	5.6
23-State Total	8,583	8,628	1,909	1,922	16,381	16,586	1.3

¹ Includes dry cows. Excludes heifers not yet fresh.

² Excludes milk sucked by calves.

Monthly Milk per Cow – 23 Selected States

Pounds



Statistical Methodology

Survey Procedures: Primary data used to determine these estimates were obtained from a sample of producers. Individual States maintain a list of all known milk producers and information on the size of their herd. States use all known sources of producers to ensure that their lists are as complete as possible. Generally, all large producers and a sample of small producers are included in the survey. Questionnaires are mailed to producers near the end of the month to obtain data for the first day of the month. Additional reports are obtained by telephone, as needed, to supplement the mail response. Where feasible, States utilize state and federal administrative data to estimate milk production. This eliminates duplication of data gathering by different government agencies. Indications of milk cow inventory are also obtained in the January Cattle Surveys.

Estimation Procedures: State offices prepare these estimates by using a combination of survey indications, historic trends, and any available administrative data. Individual State estimates are reviewed by the Agricultural Statistics Board for reasonableness.

Revision Policy: Milk production, milk per cow, and number of milk cows are subject to revision the following month after initial publication for monthly States or the following quarter for the quarterly States. Normally, administrative data from Federal Market Orders, State Departments of Agriculture, or other sources are the main basis for revisions. However, administrative data for all States may not be available in time for these revisions. Estimates are again subject to revisions in February each year based on additional administrative data. In the event that additional changes are necessary, a third revision is possible in February the following year. Estimates are again reviewed after data from the five-year Census of Agriculture are available. No revisions are made after that date.

Reliability: Since all operations with dairy animals are not included in the sample, survey estimates are subject to sampling variability. Survey results are also subject to non-sampling errors such as omissions, duplications, and mistakes in reporting, recording, and processing the data. The effects of these errors cannot be measured directly. They are minimized through rigid quality controls in the data collection process and through a careful review of all reported data for consistency and reasonableness.

To assist users in evaluating the reliability of the estimates in this report, the "Root Mean Square Error" is shown for selected items in the table below. The "Root Mean Square Error" is a statistical measure based on past performance and is computed using the differences between first and final estimates. The "Root Mean Square Error" for the 23 State milk production estimates over the past 24 months is 0.2 percent. This means that chances are 2 out of 3 that the final estimate will not be above or below the current estimate of 16.3 billion pounds by more than 0.2 percent. Chances are 9 out of 10 that the difference will not exceed 0.3 percent.

Reliability of Monthly Milk Production Estimates

[Based on data for the past 24 months]

Item	Root mean square error	90 percent confidence level	Difference between first and latest estimate				
			Average	Smallest	Largest	Months	
						Below latest	Above latest
	(percent)	(percent)	(1,000)	(1,000)	(1,000)	(number)	(number)
Milk production	0.2	0.3	23	0	64	16	7
All Milk cows	0.1	0.1	4	0	16	14	6

Information Contacts

Listed below are the commodity specialists in the Livestock Branch of the National Agricultural Statistics Service to contact for additional information. E-mail inquiries may be sent to nass@nass.usda.gov.

Dan Kerestes, Chief, Livestock Branch	(202) 720-3570
Scott Hollis, Head, Livestock Section	(202) 690-2424
Sherry Bertramsen – Livestock Slaughter	(202) 720-3240
Doug Bounds – Hogs and Pigs	(202) 720-3106
Donnie Fike – Dairy Products	(202) 690-3236
Michael Klamm – Cattle, Cattle on Feed	(202) 720-3040
Mike Miller – Milk Production and Milk Cows	(202) 720-3278
Vacant – Sheep and Goats	(202) 720-3570

Access to NASS Reports

For your convenience, you may access NASS reports and products the following ways:

- All reports are available electronically, at no cost, on the NASS web site: <http://www.nass.usda.gov>
- Both national and state specific reports are available via a free e-mail subscription. To set-up this free subscription, visit <http://www.nass.usda.gov> and in the “Follow NASS” box under “Receive reports by Email,” click on “National” or “State” to select the reports you would like to receive.

For more information on NASS surveys and reports, call the NASS Agricultural Statistics Hotline at (800) 727-9540, 7:30 a.m. to 4:00 p.m. ET, or e-mail: nass@nass.usda.gov.

The U.S. Department of Agriculture (USDA) prohibits discrimination against its customers, employees, and applicants for employment on the basis of race, color, national origin, age, disability, sex, gender identity, religion, reprisal, and where applicable, political beliefs, marital status, familial or parental status, sexual orientation, or all or part of an individual's income is derived from any public assistance program, or protected genetic information in employment or in any program or activity conducted or funded by the Department. (Not all prohibited bases will apply to all programs and/or employment activities.)

If you wish to file a Civil Rights program complaint of discrimination, complete the [USDA Program Discrimination Complaint Form](#) (PDF), found online at http://www.ascr.usda.gov/complaint_filing_cust.html, or at any USDA office, or call (866) 632-9992 to request the form. You may also write a letter containing all of the information requested in the form. Send your completed complaint form or letter to us by mail at U.S. Department of Agriculture, Director, Office of Adjudication, 1400 Independence Avenue, S.W., Washington, D.C. 20250-9410, by fax (202) 690-7442 or email at program.intake@usda.gov.