



Released December 18, 2015, by the National Agricultural Statistics Service (NASS), Agricultural Statistics Board, United States Department of Agriculture (USDA).

November Milk Production up 0.6 Percent

Milk production in the 23 major States during November totaled 15.6 billion pounds, up 0.6 percent from November 2014. October revised production, at 16.1 billion pounds, was up 0.3 percent from October 2014. The October revision represented an increase of 30 million pounds or 0.2 percent from last month's preliminary production estimate.

Production per cow in the 23 major States averaged 1,808 pounds for November, 2 pounds above November 2014. This is the highest production per cow for the month of November since the 23 State series began in 2003.

The number of milk cows on farms in the 23 major States was 8.64 million head, 37,000 head more than November 2014, but unchanged from October 2015.

November Milk Production in the United States up 0.6 Percent

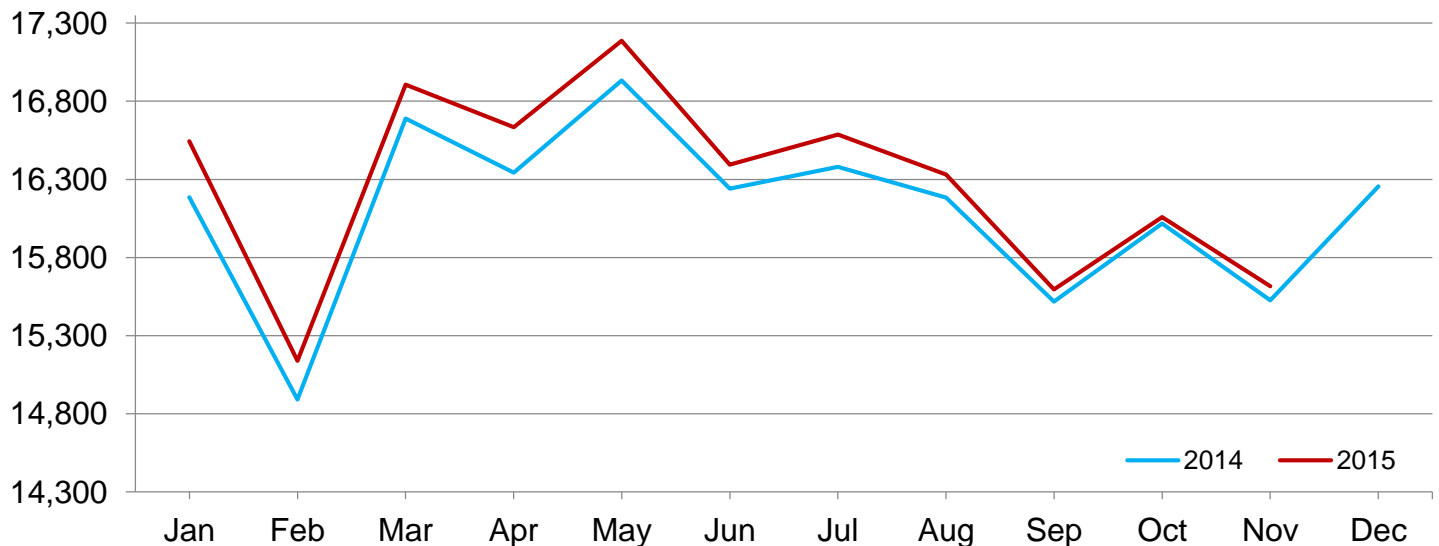
Milk production in the United States during November totaled 16.6 billion pounds, up 0.6 percent from November 2014.

Production per cow in the United States averaged 1,787 pounds for November, 4 pounds above November 2014.

The number of milk cows on farms in the United States was 9.31 million head, 29,000 head more than November 2014, but unchanged from October 2015.

Monthly Milk Production – 23 Selected States

Million pounds



Milk Cows and Production by Quarter – United States: 2014-2015

[May not add due to rounding]

Quarter	Milk cows ¹		Milk per cow ²		Milk production ²		
	2014	2015	2014	2015	2014	2015	Change from 2014
	(1,000 head)	(1,000 head)	(pounds)	(pounds)	(million pounds)	(million pounds)	(percent)
January-March	9,216	9,305	5,536	5,583	51,020	51,949	1.8
April-June	9,253	9,320	5,717	5,757	52,897	53,654	1.4
July-September	9,270	9,313	5,520	5,546	51,173	51,654	0.9
October-December	9,287		5,487		50,956		
Annual	9,257		22,258		206,046		

¹ Includes dry cows. Excludes heifers not yet fresh.

² Excludes milk sucked by calves.

Milk Cows and Production by Month – 23 Selected States: 2014-2015

Month	Milk cows ¹		Milk per cow ²		Milk production ²		
	2014	2015	2014	2015	2014	2015	Change from 2014
	(1,000 head)	(1,000 head)	(pounds)	(pounds)	(million pounds)	(million pounds)	(percent)
January	8,516	8,620	1,901	1,919	16,186	16,544	2.2
February	8,516	8,620	1,749	1,756	14,892	15,139	1.7
March	8,530	8,622	1,957	1,961	16,690	16,907	1.3
April	8,547	8,626	1,912	1,928	16,344	16,633	1.8
May	8,558	8,630	1,979	1,992	16,934	17,187	1.5
June	8,572	8,628	1,895	1,900	16,241	16,394	0.9
July	8,583	8,628	1,909	1,922	16,381	16,586	1.3
August	8,585	8,634	1,885	1,891	16,184	16,331	0.9
September	8,593	8,633	1,806	1,806	15,519	15,595	0.5
October	8,594	8,635	1,864	1,860	16,017	16,058	0.3
November	8,598	8,635	1,806	1,808	15,527	15,616	0.6
December	8,611		1,888		16,256		
Annual	8,567		22,551		193,171		

¹ Includes dry cows. Excludes heifers not yet fresh.

² Excludes milk sucked by calves.

Estimated Milk Cows and Production by Month – United States: 2014-2015

Month	Milk cows ¹		Milk per cow ²		Milk production ²		
	2014	2015	2014	2015	2014	2015	Change from 2014
	(1,000 head)	(1,000 head)	(pounds)	(pounds)	(million pounds)	(million pounds)	(percent)
January	9,212	9,304	1,876	1,900	17,284	17,680	2.3
February	9,212	9,304	1,727	1,740	15,907	16,189	1.8
March	9,223	9,306	1,933	1,943	17,829	18,080	1.4
April	9,240	9,315	1,892	1,911	17,480	17,800	1.8
May	9,252	9,323	1,956	1,970	18,094	18,369	1.5
June	9,267	9,321	1,869	1,876	17,323	17,485	0.9
July	9,268	9,315	1,881	1,897	17,435	17,670	1.3
August	9,268	9,315	1,858	1,866	17,224	17,385	0.9
September	9,274	9,310	1,781	1,783	16,514	16,599	0.5
October	9,277	9,313	1,840	1,838	17,071	17,114	0.3
November	9,284	9,313	1,783	1,787	16,551	16,643	0.6
December	9,299		1,864		17,334		
Annual	9,257		22,258		206,046		

¹ Includes dry cows. Excludes heifers not yet fresh.

² Excludes milk sucked by calves.

Milk Cows and Production – 23 Selected States: November 2014 and 2015

[May not add due to rounding]

State	Milk cows ¹		Milk per cow ²		Milk production ²		Change from 2014
	2014	2015	2014	2015	2014	2015	
	(1,000 head)	(1,000 head)	(pounds)	(pounds)	(million pounds)	(million pounds)	(percent)
Arizona	193	195	1,945	1,950	375	380	1.3
California	1,780	1,776	1,885	1,805	3,355	3,206	-4.4
Colorado	145	146	2,035	2,090	295	305	3.4
Florida	123	125	1,535	1,545	189	193	2.1
Idaho	579	587	1,925	1,935	1,115	1,136	1.9
Illinois	93	94	1,580	1,600	147	150	2.0
Indiana	179	184	1,775	1,800	318	331	4.1
Iowa	208	210	1,835	1,845	382	387	1.3
Kansas	143	142	1,790	1,775	256	252	-1.6
Michigan	399	410	1,970	2,040	786	836	6.4
Minnesota	460	460	1,610	1,650	741	759	2.4
New Mexico	323	323	1,975	1,910	638	617	-3.3
New York	615	620	1,805	1,850	1,110	1,147	3.3
Ohio	267	266	1,620	1,635	433	435	0.5
Oregon	124	123	1,615	1,600	200	197	-1.5
Pennsylvania	530	530	1,615	1,615	856	856	-
South Dakota	98	109	1,795	1,830	176	199	13.1
Texas	470	462	1,785	1,785	839	825	-1.7
Utah	96	96	1,865	1,840	179	177	-1.1
Vermont	132	131	1,630	1,640	215	215	-
Virginia	92	90	1,550	1,550	143	140	-2.1
Washington	276	276	1,905	1,900	526	524	-0.4
Wisconsin	1,273	1,280	1,770	1,835	2,253	2,349	4.3
23-State Total	8,598	8,635	1,806	1,808	15,527	15,616	0.6

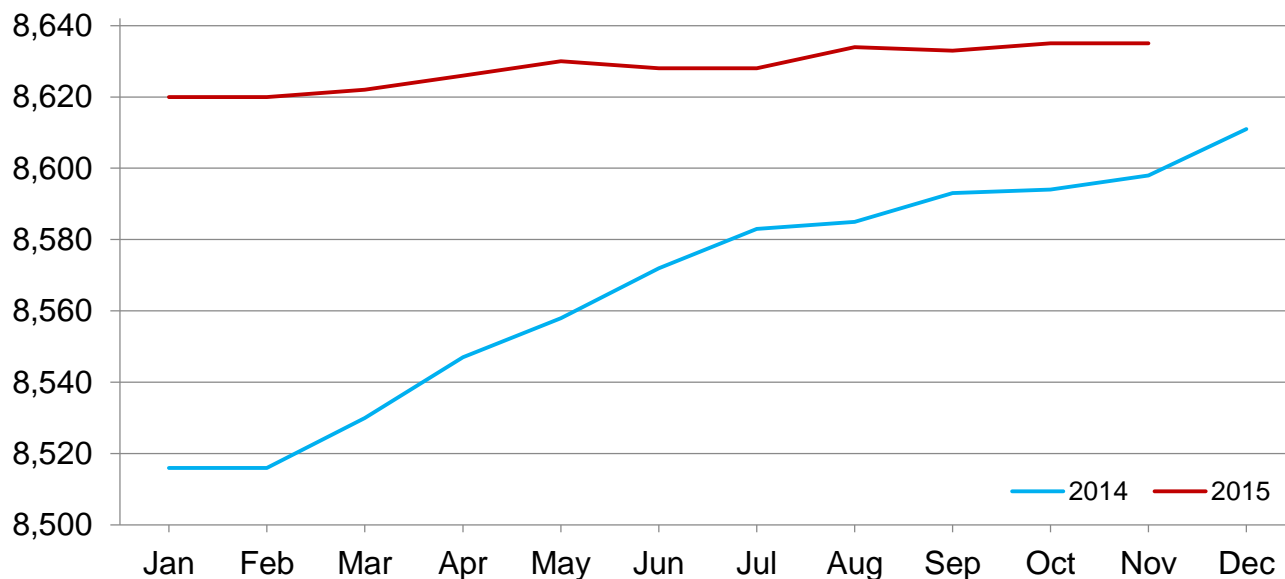
- Represents zero.

¹ Includes dry cows. Excludes heifers not yet fresh.

² Excludes milk sucked by calves.

Monthly Milk Cows – 23 Selected States

Thousand head



Milk Cows and Production – 23 Selected States: October 2014 and 2015

[May not add due to rounding]

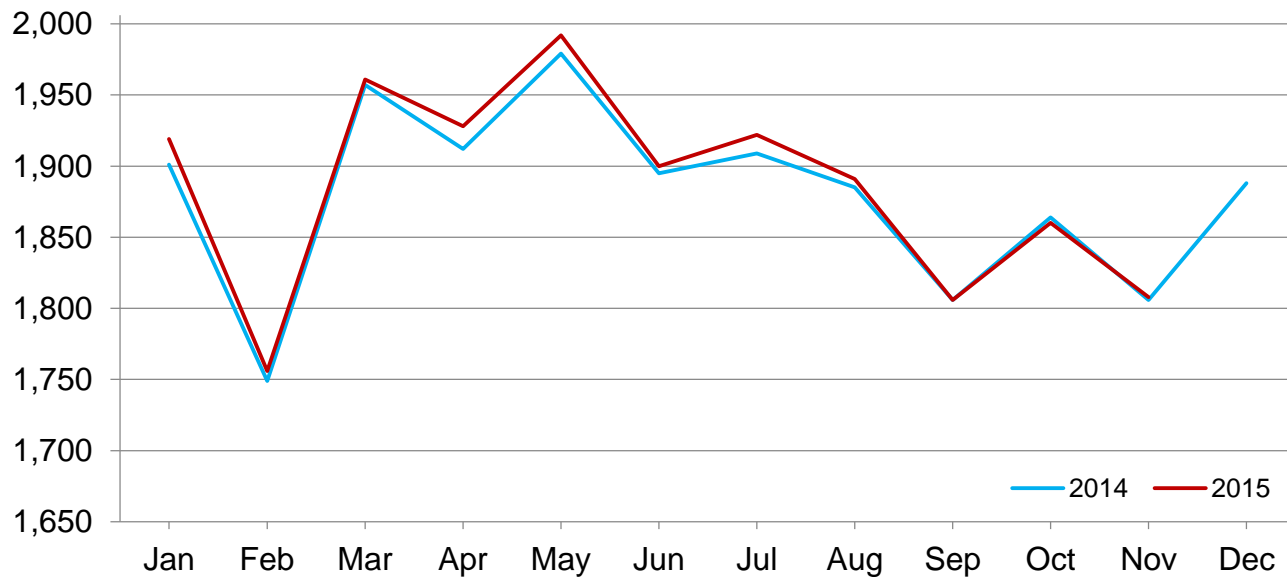
	Milk cows ¹		Milk per cow ²		Milk production ²		Change from 2014
	2014	2015	2014	2015	2014	2015	
	(1,000 head)	(1,000 head)	(pounds)	(pounds)	(million pounds)	(million pounds)	(percent)
Arizona	195	195	1,955	1,930	381	376	-1.3
California	1,779	1,777	1,930	1,825	3,433	3,243	-5.5
Colorado	145	146	2,105	2,185	305	319	4.6
Florida	123	125	1,470	1,470	181	184	1.7
Idaho	579	587	2,010	2,035	1,164	1,195	2.7
Illinois	93	94	1,600	1,610	149	151	1.3
Indiana	179	183	1,820	1,850	326	339	4.0
Iowa	208	210	1,875	1,895	390	398	2.1
Kansas	143	142	1,855	1,840	265	261	-1.5
Michigan	397	410	2,055	2,100	816	861	5.5
Minnesota	460	460	1,655	1,695	761	780	2.5
New Mexico	323	323	2,050	1,990	662	643	-2.9
New York	615	620	1,880	1,910	1,156	1,184	2.4
Ohio	267	266	1,685	1,705	450	454	0.9
Oregon	124	123	1,685	1,675	209	206	-1.4
Pennsylvania	530	530	1,680	1,650	890	875	-1.7
South Dakota	97	109	1,860	1,890	180	206	14.4
Texas	470	462	1,825	1,845	858	852	-0.7
Utah	96	96	1,925	1,900	185	182	-1.6
Vermont	132	131	1,680	1,670	222	219	-1.4
Virginia	92	90	1,580	1,595	145	144	-0.7
Washington	275	276	1,995	1,985	549	548	-0.2
Wisconsin	1,272	1,280	1,840	1,905	2,340	2,438	4.2
23-State Total	8,594	8,635	1,864	1,860	16,017	16,058	0.3

¹ Includes dry cows. Excludes heifers not yet fresh.

² Excludes milk sucked by calves.

Monthly Milk per Cow – 23 Selected States

Pounds



Statistical Methodology

Survey Procedures: Primary data used to determine these estimates were obtained from a sample of producers. Individual States maintain a list of all known milk producers and information on the size of their herd. States use all known sources of producers to ensure that their lists are as complete as possible. Generally, all large producers and a sample of small producers are included in the survey. Questionnaires are mailed to producers near the end of the month to obtain data for the first day of the month. Additional reports are obtained by telephone, as needed, to supplement the mail response. Where feasible, States utilize state and federal administrative data to estimate milk production. This eliminates duplication of data gathering by different government agencies. Indications of milk cow inventory are also obtained in the January Cattle Survey.

Estimation Procedures: State offices prepare these estimates by using a combination of survey indications, historic trends, and any available administrative data. Individual State estimates are reviewed by the Agricultural Statistics Board for reasonableness.

Revision Policy: Milk production, milk per cow, and number of milk cows are subject to revision the following month after initial publication for monthly States or the following quarter for the quarterly States. Normally, administrative data from Federal Market Orders, State Departments of Agriculture, or other sources are the main basis for revisions. However, administrative data for all States may not be available in time for these revisions. Estimates are again subject to revisions in February each year based on additional administrative data. In the event that additional changes are necessary, a third revision is possible in February the following year. Estimates are again reviewed after data from the five-year Census of Agriculture are available. No revisions are made after that date.

Reliability: Since all operations with dairy animals are not included in the sample, survey estimates are subject to sampling variability. Survey results are also subject to non-sampling errors such as omissions, duplications, and mistakes in reporting, recording, and processing the data. The effects of these errors cannot be measured directly. They are minimized through rigid quality controls in the data collection process and through a careful review of all reported data for consistency and reasonableness.

To assist users in evaluating the reliability of the estimates in this report, the "Root Mean Square Error" is shown for selected items in the table below. The "Root Mean Square Error" is a statistical measure based on past performance and is computed using the differences between first and final estimates. The "Root Mean Square Error" for the 23 State milk production estimates over the past 24 months is 0.2 percent. This means that chances are 2 out of 3 that the final estimate will not be above or below the current estimate of 15.6 billion pounds by more than 0.2 percent. Chances are 9 out of 10 that the difference will not exceed 0.3 percent.

Reliability of Monthly Milk Production Estimates

[Based on data for the past 24 months]

Item	Root mean square error	90 percent confidence level	Difference between first and latest estimate				
			Average	Smallest	Largest	Months	
						Below latest	Above latest
	(percent)	(percent)	(1,000)	(1,000)	(1,000)	(number)	(number)
Milk production	0.2	0.3	24	3	64	18	6
All Milk cows	0.1	0.1	4	0	16	16	5

Information Contacts

Listed below are the commodity specialists in the Livestock Branch of the National Agricultural Statistics Service to contact for additional information. E-mail inquiries may be sent to nass@nass.usda.gov.

Dan Kerestes, Chief, Livestock Branch	(202) 720-3570
Scott Hollis, Head, Livestock Section	(202) 690-2424
Sherry Bertramsen – Livestock Slaughter	(202) 720-3240
Doug Bounds – Hogs and Pigs	(202) 720-3106
David Colwell – Sheep and Goats	(202) 720-8784
Donnie Fike – Dairy Products	(202) 690-3236
Michael Klamm – Cattle, Cattle on Feed	(202) 720-3040
Mike Miller – Milk Production and Milk Cows	(202) 720-3278

Access to NASS Reports

For your convenience, you may access NASS reports and products the following ways:

- All reports are available electronically, at no cost, on the NASS web site: <http://www.nass.usda.gov>
- Both national and state specific reports are available via a free e-mail subscription. To set-up this free subscription, visit <http://www.nass.usda.gov> and click on “National” or “State” in upper right corner above “search” box to create an account and select the reports you would like to receive.

For more information on NASS surveys and reports, call the NASS Agricultural Statistics Hotline at (800) 727-9540, 7:30 a.m. to 4:00 p.m. ET, or e-mail: nass@nass.usda.gov.

The U.S. Department of Agriculture (USDA) prohibits discrimination against its customers, employees, and applicants for employment on the basis of race, color, national origin, age, disability, sex, gender identity, religion, reprisal, and where applicable, political beliefs, marital status, familial or parental status, sexual orientation, or all or part of an individual's income is derived from any public assistance program, or protected genetic information in employment or in any program or activity conducted or funded by the Department. (Not all prohibited bases will apply to all programs and/or employment activities.)

If you wish to file a Civil Rights program complaint of discrimination, complete the [USDA Program Discrimination Complaint Form](#) (PDF), found online at http://www.ascr.usda.gov/complaint_filing_cust.html, or at any USDA office, or call (866) 632-9992 to request the form. You may also write a letter containing all of the information requested in the form. Send your completed complaint form or letter to us by mail at U.S. Department of Agriculture, Director, Office of Adjudication, 1400 Independence Avenue, S.W., Washington, D.C. 20250-9410, by fax (202) 690-7442 or email at program.intake@usda.gov.