



ISSN: 1949-1557

Released September 20, 2016, by the National Agricultural Statistics Service (NASS), Agricultural Statistics Board, United States Department of Agriculture (USDA).

## August Milk Production up 1.9 Percent

**Milk production** in the 23 major States during August totaled 16.7 billion pounds, up 1.9 percent from August 2015. July revised production, at 16.9 billion pounds, was up 1.7 percent from July 2015. The July revision represented an increase of 48 million pounds or 0.3 percent from last month's preliminary production estimate.

**Production per cow** in the 23 major States averaged 1,920 pounds for August, 26 pounds above August 2015. This is the highest production per cow for the month of August since the 23 State series began in 2003.

**The number of milk cows** on farms in the 23 major States was 8.68 million head, 43,000 head more than August 2015, and 15,000 head more than July 2016.

## August Milk Production in the United States up 1.9 Percent

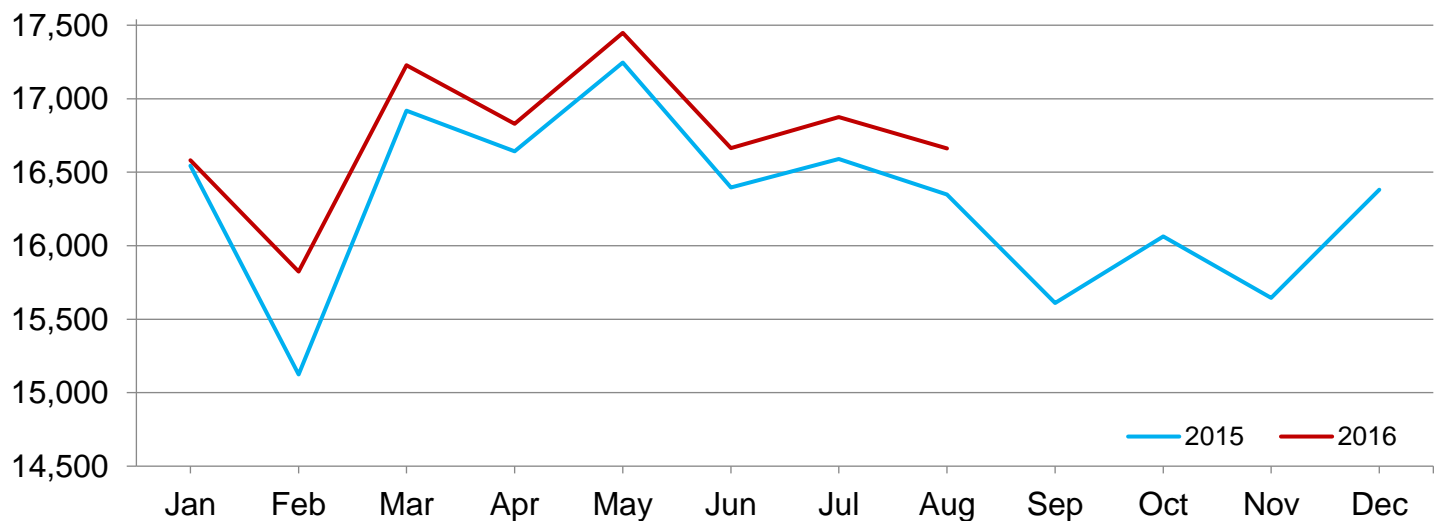
**Milk production** in the United States during August totaled 17.7 billion pounds, up 1.9 percent from August 2015.

**Production per cow** in the United States averaged 1,895 pounds for August, 27 pounds above August 2015.

**The number of milk cows** on farms in the United States was 9.36 million head, 45,000 head more than August 2015, and 16,000 head more than July 2016.

## Monthly Milk Production – 23 Selected States

Million pounds



## Milk Cows and Production by Quarter – United States: 2015-2016

[May not add due to rounding]

Quarter	Milk cows <sup>1</sup>		Milk per cow <sup>2</sup>		Milk production <sup>2</sup>		
	2015	2016	2015	2016	2015	2016	Change from 2015
	(1,000 head)	(1,000 head)	(pounds)	(pounds)	(million pounds)	(million pounds)	(percent)
January-March .....	9,309	9,319	5,579	5,692	51,936	53,041	2.1
April-June .....	9,321	9,328	5,763	5,828	53,720	54,360	1.2
July-September .....	9,315		5,549		51,685		
October-December .....	9,321		5,503		51,292		
Annual .....	9,317		22,393		208,633		

<sup>1</sup> Includes dry cows. Excludes heifers not yet fresh.

<sup>2</sup> Excludes milk sucked by calves.

## Milk Cows and Production By Month – 23 Selected States: 2015-2016

Month	Milk cows <sup>1</sup>		Milk per cow <sup>2</sup>		Milk production <sup>2</sup>		
	2015	2016	2015	2016	2015	2016	Change from 2015
	(1,000 head)	(1,000 head)	(pounds)	(pounds)	(million pounds)	(million pounds)	(percent)
January .....	8,621	8,627	1,919	1,922	16,544	16,581	0.2
February .....	8,621	8,633	1,754	1,833	15,124	15,824	4.6
March .....	8,623	8,644	1,962	1,993	16,918	17,227	1.8
April .....	8,627	8,644	1,929	1,947	16,641	16,830	1.1
May .....	8,633	8,644	1,998	2,019	17,246	17,448	1.2
June .....	8,630	8,647	1,900	1,927	16,397	16,664	1.6
July .....	8,630	8,661	1,922	1,949	16,589	16,876	1.7
August .....	8,633	8,676	1,894	1,920	16,349	16,661	1.9
September .....	8,636		1,807		15,609		
October .....	8,638		1,860		16,063		
November .....	8,640		1,811		15,646		
December .....	8,638		1,896		16,381		
Annual .....	8,631		22,652		195,507		

<sup>1</sup> Includes dry cows. Excludes heifers not yet fresh.

<sup>2</sup> Excludes milk sucked by calves.

## Estimated Milk Cows and Production By Month – United States: 2015-2016

Month	Milk cows <sup>1</sup>		Milk per cow <sup>2</sup>		Milk production <sup>2</sup>		
	2015	2016	2015	2016	2015	2016	Change from 2015
	(1,000 head)	(1,000 head)	(pounds)	(pounds)	(million pounds)	(million pounds)	(percent)
January .....	9,308	9,310	1,900	1,903	17,685	17,718	0.2
February .....	9,308	9,317	1,737	1,815	16,166	16,912	4.6
March .....	9,311	9,329	1,942	1,974	18,085	18,411	1.8
April .....	9,316	9,327	1,909	1,925	17,788	17,959	1.0
May .....	9,324	9,327	1,976	1,997	18,428	18,622	1.1
June .....	9,323	9,330	1,878	1,906	17,504	17,779	1.6
July .....	9,314	9,344	1,897	1,922	17,665	17,963	1.7
August .....	9,315	9,360	1,868	1,895	17,403	17,735	1.9
September .....	9,317		1,784		16,617		
October .....	9,320		1,838		17,130		
November .....	9,322		1,790		16,689		
December .....	9,320		1,875		17,473		
Annual .....	9,317		22,393		208,633		

<sup>1</sup> Includes dry cows. Excludes heifers not yet fresh.

<sup>2</sup> Excludes milk sucked by calves.

## Milk Cows and Production – 23 Selected States: August 2015 and 2016

[May not add due to rounding]

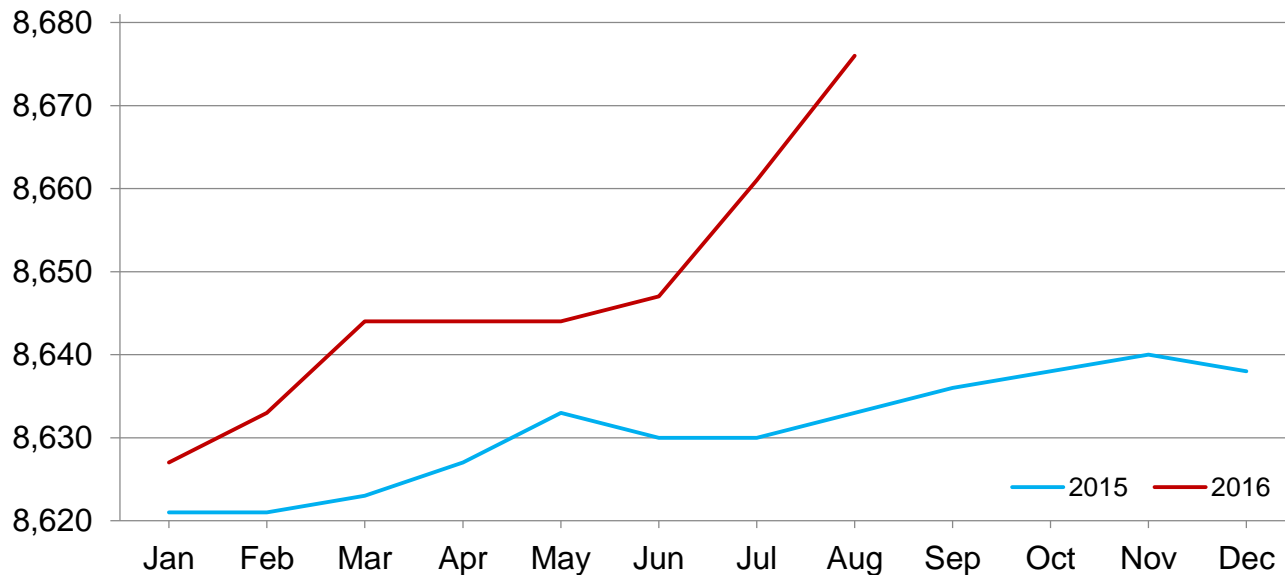
State	Milk cows <sup>1</sup>		Milk per cow <sup>2</sup>		Milk production <sup>2</sup>		Change from 2015
	2015	2016	2015	2016	2015	2016	
	(1,000 head)	(1,000 head)	(pounds)	(pounds)	(million pounds)	(million pounds)	(percent)
Arizona .....	195	197	1,870	1,870	365	368	0.8
California .....	1,778	1,767	1,880	1,860	3,343	3,287	-1.7
Colorado .....	145	153	2,210	2,235	320	342	6.9
Florida .....	125	120	1,555	1,500	194	180	-7.2
Idaho .....	586	599	2,090	2,145	1,225	1,285	4.9
Illinois .....	94	93	1,600	1,590	150	148	-1.3
Indiana .....	181	184	1,860	1,870	337	344	2.1
Iowa .....	211	211	1,915	1,970	404	416	3.0
Kansas .....	143	145	1,840	1,860	263	270	2.7
Michigan .....	410	422	2,140	2,215	877	935	6.6
Minnesota .....	460	462	1,730	1,735	796	802	0.8
New Mexico .....	323	317	2,010	2,080	649	659	1.5
New York .....	619	620	1,945	2,005	1,204	1,243	3.2
Ohio .....	266	266	1,750	1,765	466	469	0.6
Oregon .....	123	125	1,740	1,760	214	220	2.8
Pennsylvania .....	530	529	1,700	1,695	901	897	-0.4
South Dakota .....	107	115	1,915	1,880	205	216	5.4
Texas .....	462	487	1,790	1,885	827	918	11.0
Utah .....	96	92	1,990	2,000	191	184	-3.7
Vermont .....	132	130	1,700	1,745	224	227	1.3
Virginia .....	91	89	1,595	1,560	145	139	-4.1
Washington .....	276	275	2,050	2,070	566	569	0.5
Wisconsin .....	1,280	1,278	1,940	1,990	2,483	2,543	2.4
23-State Total .....	8,633	8,676	1,894	1,920	16,349	16,661	1.9

<sup>1</sup> Includes dry cows. Excludes heifers not yet fresh.

<sup>2</sup> Excludes milk sucked by calves.

## Monthly Milk Cows – 23 Selected States

Thousand head



## Milk Cows and Production – 23 Selected States: July 2015 and 2016

[May not add due to rounding]

	Milk cows <sup>1</sup>		Milk per cow <sup>2</sup>		Milk production <sup>2</sup>		Change from 2015
	2015	2016	2015	2016	2015	2016	
	(1,000 head)	(1,000 head)	(pounds)	(pounds)	(million pounds)	(million pounds)	(percent)
Arizona .....	195	197	1,985	1,970	387	388	0.3
California .....	1,778	1,768	1,915	1,910	3,405	3,377	-0.8
Colorado .....	145	152	2,220	2,235	322	340	5.6
Florida .....	125	121	1,715	1,645	214	199	-7.0
Idaho .....	586	599	2,095	2,165	1,228	1,297	5.6
Illinois .....	94	94	1,650	1,660	155	156	0.6
Indiana .....	181	184	1,850	1,850	335	340	1.5
Iowa .....	211	211	1,915	1,980	404	418	3.5
Kansas .....	143	145	1,845	1,880	264	273	3.4
Michigan .....	409	420	2,170	2,220	888	932	5.0
Minnesota .....	460	462	1,760	1,765	810	815	0.6
New Mexico .....	323	313	2,040	2,080	659	651	-1.2
New York .....	619	620	1,970	2,050	1,219	1,271	4.3
Ohio .....	266	266	1,770	1,780	471	473	0.4
Oregon .....	122	125	1,745	1,785	213	223	4.7
Pennsylvania .....	530	530	1,730	1,735	917	920	0.3
South Dakota .....	107	115	1,895	1,870	203	215	5.9
Texas .....	462	475	1,850	1,880	855	893	4.4
Utah .....	96	92	2,010	1,990	193	183	-5.2
Vermont .....	132	130	1,740	1,770	230	230	-
Virginia .....	91	89	1,630	1,585	148	141	-4.7
Washington .....	275	275	2,035	2,080	560	572	2.1
Wisconsin .....	1,280	1,278	1,960	2,010	2,509	2,569	2.4
23-State Total .....	8,630	8,661	1,922	1,949	16,589	16,876	1.7

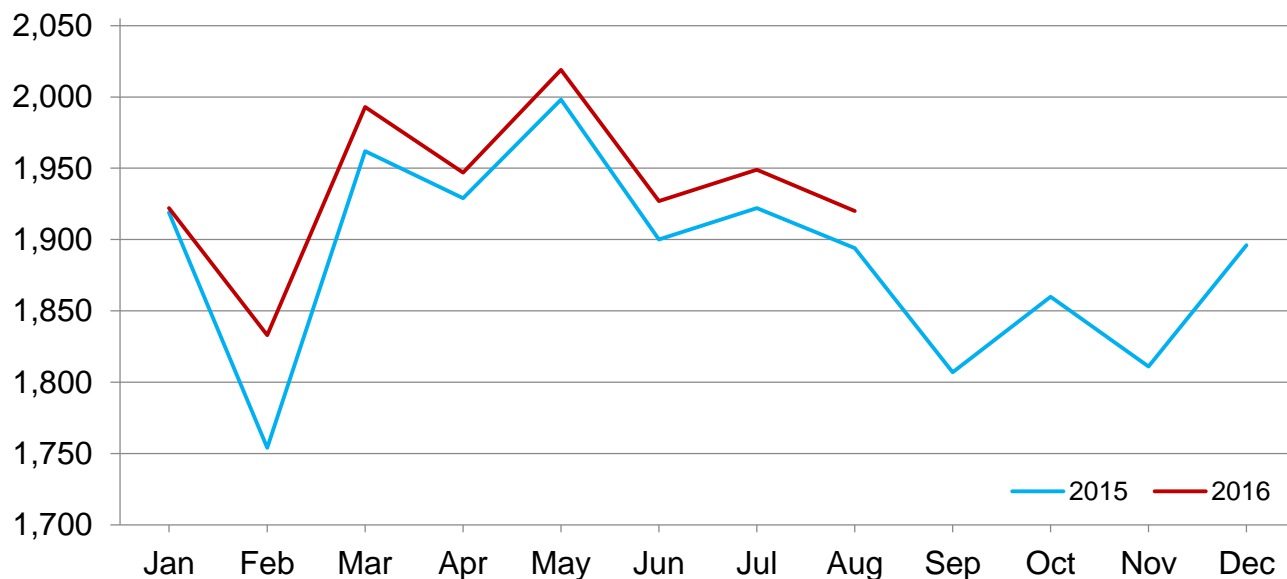
- Represents zero.

<sup>1</sup> Includes dry cows. Excludes heifers not yet fresh.

<sup>2</sup> Excludes milk sucked by calves.

## Monthly Milk per Cow – 23 Selected States

Pounds



## Statistical Methodology

**Survey Procedures:** Primary data used to determine these estimates were obtained from a sample of producers. Individual States maintain a list of all known milk producers and information on the size of their herd. States use all known sources of producers to ensure that their lists are as complete as possible. Generally, all large producers and a sample of small producers are included in the survey. Questionnaires are mailed to producers near the end of the month to obtain data for the first day of the month. Additional reports are obtained by telephone, as needed, to supplement the mail response. Where feasible, States utilize state and federal administrative data to estimate milk production. This eliminates duplication of data gathering by different government agencies. Indications of milk cow inventory are also obtained in the January Cattle Survey.

**Estimation Procedures:** State offices prepare these estimates by using a combination of survey indications, historic trends, and any available administrative data. Individual State estimates are reviewed by the Agricultural Statistics Board for reasonableness.

**Revision Policy:** Milk production, milk per cow, and number of milk cows are subject to revision the following month after initial publication for monthly States or the following quarter for the quarterly States. Normally, administrative data from Federal Market Orders, State Departments of Agriculture, or other sources are the main basis for revisions. However, administrative data for all States may not be available in time for these revisions. Estimates are again subject to revisions in February each year based on additional administrative data. In the event that additional changes are necessary, a third revision is possible in February the following year. Estimates are again reviewed after data from the five-year Census of Agriculture are available. No revisions are made after that date.

**Reliability:** Since all operations with dairy animals are not included in the sample, survey estimates are subject to sampling variability. Survey results are also subject to non-sampling errors such as omissions, duplications, and mistakes in reporting, recording, and processing the data. The effects of these errors cannot be measured directly. They are minimized through rigid quality controls in the data collection process and through a careful review of all reported data for consistency and reasonableness.

To assist users in evaluating the reliability of the estimates in this report, the "Root Mean Square Error" is shown for selected items in the table below. The "Root Mean Square Error" is a statistical measure based on past performance and is computed using the differences between first and final estimates. The "Root Mean Square Error" for the 23 State milk production estimates over the past 24 months is 0.2 percent. This means that chances are 2 out of 3 that the final estimate will not be above or below the current estimate of 16.7 billion pounds by more than 0.2 percent. Chances are 9 out of 10 that the difference will not exceed 0.3 percent.

### Reliability of Monthly Milk Production Estimates

[Based on data for the past 24 months]

Item	Root mean square error	90 percent confidence level	Difference between first and latest estimate				
			Average	Smallest	Largest	Months	
						Below latest	Above latest
	(percent)	(percent)	(1,000)	(1,000)	(1,000)	(number)	(number)
Milk production .....	0.2	0.3	23	2	71	19	5
All Milk cows .....	0.1	0.1	3	0	12	16	3

## Information Contacts

Listed below are the commodity specialists in the Livestock Branch of the National Agricultural Statistics Service to contact for additional information. E-mail inquiries may be sent to [nass@nass.usda.gov](mailto:nass@nass.usda.gov).

Dan Kerestes, Chief, Livestock Branch .....	(202) 720-3570
Scott Hollis, Head, Livestock Section .....	(202) 690-2424
Sherry Bertramsen – Livestock Slaughter .....	(202) 720-3240
Doug Bounds – Hogs and Pigs .....	(202) 720-3106
David Colwell – Sheep and Goats .....	(202) 720-8784
Donnie Fike – Dairy Products .....	(202) 690-3236
Michael Klamm – Cattle, Cattle on Feed .....	(202) 720-3040
Mike Miller – Milk Production and Milk Cows .....	(202) 720-3278

## Access to NASS Reports

For your convenience, you may access NASS reports and products the following ways:

- All reports are available electronically, at no cost, on the NASS web site: [www.nass.usda.gov](http://www.nass.usda.gov)
- Both national and state specific reports are available via a free e-mail subscription. To set-up this free subscription, visit [www.nass.usda.gov](http://www.nass.usda.gov) and click on “National” or “State” in upper right corner above “search” box to create an account and select the reports you would like to receive.

For more information on NASS surveys and reports, call the NASS Agricultural Statistics Hotline at (800) 727-9540, 7:30 a.m. to 4:00 p.m. ET, or e-mail: [nass@nass.usda.gov](mailto:nass@nass.usda.gov).

The U.S. Department of Agriculture (USDA) prohibits discrimination against its customers, employees, and applicants for employment on the basis of race, color, national origin, age, disability, sex, gender identity, religion, reprisal, and where applicable, political beliefs, marital status, familial or parental status, sexual orientation, or all or part of an individual's income is derived from any public assistance program, or protected genetic information in employment or in any program or activity conducted or funded by the Department. (Not all prohibited bases will apply to all programs and/or employment activities.)

If you wish to file a Civil Rights program complaint of discrimination, complete the [USDA Program Discrimination Complaint Form](#) (PDF), found online at [http://www.ascr.usda.gov/complaint\\_filing\\_cust.html](http://www.ascr.usda.gov/complaint_filing_cust.html), or at any USDA office, or call (866) 632-9992 to request the form. You may also write a letter containing all of the information requested in the form. Send your completed complaint form or letter to us by mail at U.S. Department of Agriculture, Director, Office of Adjudication, 1400 Independence Avenue, S.W., Washington, D.C. 20250-9410, by fax (202) 690-7442 or email at [program.intake@usda.gov](mailto:program.intake@usda.gov).

## **USDA NASS Data Users' Meeting**

**Tuesday, October 18, 2016**

Embassy Suites by Hilton Chicago Downtown Magnificent Mile  
511 North Columbus Drive  
Chicago, IL 60611  
312-836-5900

USDA's National Agricultural Statistics Service will hold an open forum for users of U.S. domestic and international agriculture data. NASS is organizing the 2016 Data Users' Meeting in cooperation with five other USDA agencies – Agricultural Marketing Service, Economic Research Service, Farm Service Agency, Foreign Agricultural Service, and World Agricultural Outlook Board – and the Census Bureau's Foreign Trade Division. Agency representatives will provide updates on recent and pending changes in statistical and information programs important to agriculture, answer questions, and welcome comments and input from data users.

For registration details or additional information about the Data Users' Meeting, see the meeting page on the NASS website ([https://www.nass.usda.gov/Education\\_and\\_Outreach/Meeting/index.php](https://www.nass.usda.gov/Education_and_Outreach/Meeting/index.php)). Or contact Tina Hall (NASS) at 202-720-3896 or at [tina.hall@nass.usda.gov](mailto:tina.hall@nass.usda.gov).

The Data Users' Meeting precedes the Industry Outlook Conference at the same location on Wednesday, October 19, 2016. The outlook meeting brings together analysts from various commodity sectors to discuss developments and trends. For registration details or additional information about the Industry Outlook Conference, see the conference page on the LMIC website (<http://lmic.info/page/meetings>). Or contact James Robb at (303) 716-9933.