



Released November 18, 2016, by the National Agricultural Statistics Service (NASS), Agricultural Statistics Board, United States Department of Agriculture (USDA).

## October Milk Production up 2.7 Percent

**Milk production** in the 23 major States during October totaled 16.5 billion pounds, up 2.7 percent from October 2015. September revised production, at 16.0 billion pounds, was up 2.3 percent from September 2015. The September revision represented a decrease of 6 million pounds or less than 0.1 percent from last month's preliminary production estimate.

**Production per cow** in the 23 major States averaged 1,903 pounds for October, 43 pounds above October 2015. This is the highest production per cow for the month of October since the 23 State series began in 2003.

**The number of milk cows** on farms in the 23 major States was 8.67 million head, 31,000 head more than October 2015, but 2,000 head less than September 2016.

## October Milk Production in the United States up 2.5 Percent

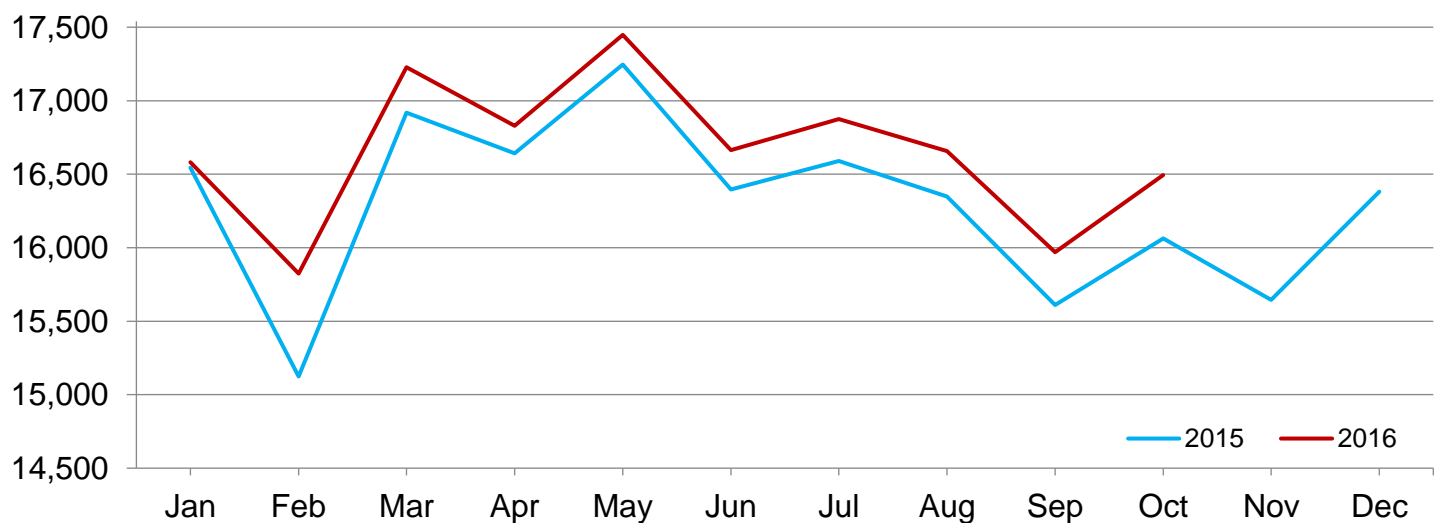
**Milk production** in the United States during October totaled 17.6 billion pounds, up 2.5 percent from October 2015.

**Production per cow** in the United States averaged 1,880 pounds for October, 42 pounds above October 2015.

**The number of milk cows** on farms in the United States was 9.34 million head, 15,000 head more than October 2015, but 2,000 head less than September 2016.

## Monthly Milk Production – 23 Selected States

Million pounds



## Milk Cows and Production by Quarter – United States: 2015-2016

[May not add due to rounding]

Quarter	Milk cows <sup>1</sup>		Milk per cow <sup>2</sup>		Milk production <sup>2</sup>		
	2015	2016	2015	2016	2015	2016	Change from 2015
	(1,000 head)	(1,000 head)	(pounds)	(pounds)	(million pounds)	(million pounds)	(percent)
January-March .....	9,309	9,319	5,579	5,692	51,936	53,041	2.1
April-June .....	9,321	9,327	5,763	5,828	53,720	54,360	1.2
July-September .....	9,315	9,336	5,549	5,632	51,685	52,579	1.7
October-December .....	9,321		5,503		51,292		
Annual .....	9,317		22,393		208,633		

<sup>1</sup> Includes dry cows. Excludes heifers not yet fresh.

<sup>2</sup> Excludes milk sucked by calves.

## Milk Cows and Production By Month – 23 Selected States: 2015-2016

Month	Milk cows <sup>1</sup>		Milk per cow <sup>2</sup>		Milk production <sup>2</sup>		
	2015	2016	2015	2016	2015	2016	Change from 2015
	(1,000 head)	(1,000 head)	(pounds)	(pounds)	(million pounds)	(million pounds)	(percent)
January .....	8,621	8,627	1,919	1,922	16,544	16,581	0.2
February .....	8,621	8,633	1,754	1,833	15,124	15,824	4.6
March .....	8,623	8,644	1,962	1,993	16,918	17,227	1.8
April .....	8,627	8,644	1,929	1,947	16,641	16,830	1.1
May .....	8,633	8,644	1,998	2,019	17,246	17,448	1.2
June .....	8,630	8,647	1,900	1,927	16,397	16,664	1.6
July .....	8,630	8,661	1,922	1,949	16,589	16,876	1.7
August .....	8,633	8,674	1,894	1,920	16,349	16,658	1.9
September .....	8,636	8,671	1,807	1,842	15,609	15,969	2.3
October .....	8,638	8,669	1,860	1,903	16,063	16,493	2.7
November .....	8,640		1,811		15,646		
December .....	8,638		1,896		16,381		
Annual .....	8,631		22,652		195,507		

<sup>1</sup> Includes dry cows. Excludes heifers not yet fresh.

<sup>2</sup> Excludes milk sucked by calves.

## Estimated Milk Cows and Production By Month – United States: 2015-2016

Month	Milk cows <sup>1</sup>		Milk per cow <sup>2</sup>		Milk production <sup>2</sup>		
	2015	2016	2015	2016	2015	2016	Change from 2015
	(1,000 head)	(1,000 head)	(pounds)	(pounds)	(million pounds)	(million pounds)	(percent)
January .....	9,308	9,310	1,900	1,903	17,685	17,718	0.2
February .....	9,308	9,317	1,737	1,815	16,166	16,912	4.6
March .....	9,311	9,329	1,942	1,974	18,085	18,411	1.8
April .....	9,316	9,327	1,909	1,926	17,788	17,964	1.0
May .....	9,324	9,327	1,976	1,997	18,428	18,622	1.1
June .....	9,323	9,328	1,878	1,905	17,504	17,774	1.5
July .....	9,314	9,329	1,897	1,921	17,665	17,925	1.5
August .....	9,315	9,341	1,868	1,894	17,403	17,693	1.7
September .....	9,317	9,337	1,784	1,817	16,617	16,961	2.1
October .....	9,320	9,335	1,838	1,880	17,130	17,550	2.5
November .....	9,322		1,790		16,689		
December .....	9,320		1,875		17,473		
Annual .....	9,317		22,393		208,633		

<sup>1</sup> Includes dry cows. Excludes heifers not yet fresh.

<sup>2</sup> Excludes milk sucked by calves.

## Milk Cows and Production – 23 Selected States: October 2015 and 2016

[May not add due to rounding]

State	Milk cows <sup>1</sup>		Milk per cow <sup>2</sup>		Milk production <sup>2</sup>		Change from 2015
	2015	2016	2015	2016	2015	2016	
	(1,000 head)	(1,000 head)	(pounds)	(pounds)	(million pounds)	(million pounds)	(percent)
Arizona .....	195	197	1,930	1,915	376	377	0.3
California .....	1,777	1,766	1,825	1,870	3,243	3,302	1.8
Colorado .....	146	151	2,185	2,180	319	329	3.1
Florida .....	125	120	1,470	1,485	184	178	-3.3
Idaho .....	587	599	2,035	2,075	1,195	1,243	4.0
Illinois .....	94	93	1,610	1,620	151	151	-
Indiana .....	183	184	1,830	1,860	335	342	2.1
Iowa .....	210	212	1,900	1,960	399	416	4.3
Kansas .....	142	147	1,840	1,910	261	281	7.7
Michigan .....	410	422	2,100	2,140	861	903	4.9
Minnesota .....	460	461	1,695	1,725	780	795	1.9
New Mexico .....	323	321	1,990	2,025	643	650	1.1
New York .....	620	620	1,910	2,000	1,184	1,240	4.7
Ohio .....	266	263	1,705	1,730	454	455	0.2
Oregon .....	126	125	1,685	1,695	212	212	-
Pennsylvania .....	530	526	1,660	1,710	880	899	2.2
South Dakota .....	109	115	1,890	1,870	206	215	4.4
Texas .....	462	488	1,845	1,890	852	922	8.2
Utah .....	96	90	1,900	1,910	182	172	-5.5
Vermont .....	131	129	1,670	1,750	219	226	3.2
Virginia .....	90	88	1,595	1,605	144	141	-2.1
Washington .....	277	275	1,975	2,015	547	554	1.3
Wisconsin .....	1,279	1,277	1,905	1,950	2,436	2,490	2.2
23-State Total .....	8,638	8,669	1,860	1,903	16,063	16,493	2.7

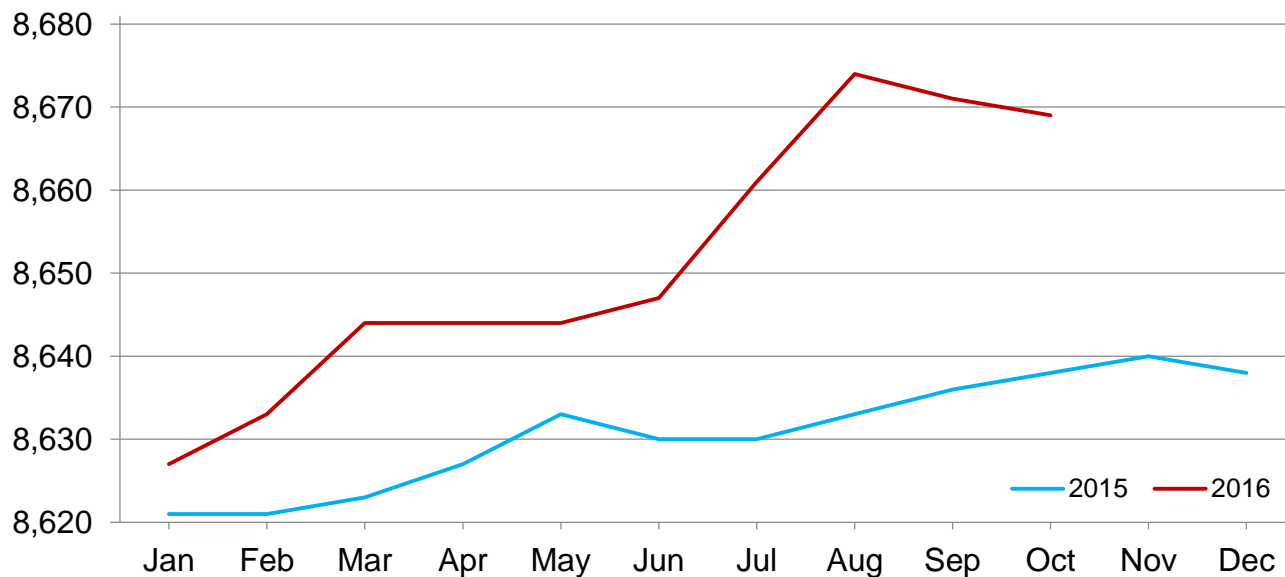
- Represents zero.

<sup>1</sup> Includes dry cows. Excludes heifers not yet fresh.

<sup>2</sup> Excludes milk sucked by calves.

## Monthly Milk Cows – 23 Selected States

Thousand head



## Milk Cows and Production – 23 Selected States: September 2015 and 2016

[May not add due to rounding]

	Milk cows <sup>1</sup>		Milk per cow <sup>2</sup>		Milk production <sup>2</sup>		Change from 2015
	2015	2016	2015	2016	2015	2016	
	(1,000 head)	(1,000 head)	(pounds)	(pounds)	(million pounds)	(million pounds)	(percent)
Arizona .....	195	197	1,795	1,785	350	352	0.6
California .....	1,777	1,766	1,785	1,795	3,172	3,170	-0.1
Colorado .....	145	151	2,145	2,140	311	323	3.9
Florida .....	125	120	1,450	1,450	181	174	-3.9
Idaho .....	587	599	1,995	2,045	1,171	1,225	4.6
Illinois .....	94	93	1,520	1,530	143	142	-0.7
Indiana .....	183	184	1,780	1,805	326	332	1.8
Iowa .....	210	212	1,810	1,880	380	399	5.0
Kansas .....	143	147	1,760	1,835	252	270	7.1
Michigan .....	410	422	2,015	2,070	826	874	5.8
Minnesota .....	460	461	1,635	1,670	752	770	2.4
New Mexico .....	323	318	1,960	1,965	633	625	-1.3
New York .....	620	620	1,860	1,950	1,153	1,209	4.9
Ohio .....	266	264	1,660	1,675	442	442	-
Oregon .....	125	125	1,685	1,675	211	209	-0.9
Pennsylvania .....	530	527	1,615	1,645	856	867	1.3
South Dakota .....	108	115	1,825	1,800	197	207	5.1
Texas .....	462	488	1,785	1,780	825	869	5.3
Utah .....	96	91	1,875	1,870	180	170	-5.6
Vermont .....	131	130	1,625	1,690	213	220	3.3
Virginia .....	90	89	1,545	1,520	139	135	-2.9
Washington .....	277	275	1,935	1,985	536	546	1.9
Wisconsin .....	1,279	1,277	1,845	1,910	2,360	2,439	3.3
23-State Total .....	8,636	8,671	1,807	1,842	15,609	15,969	2.3

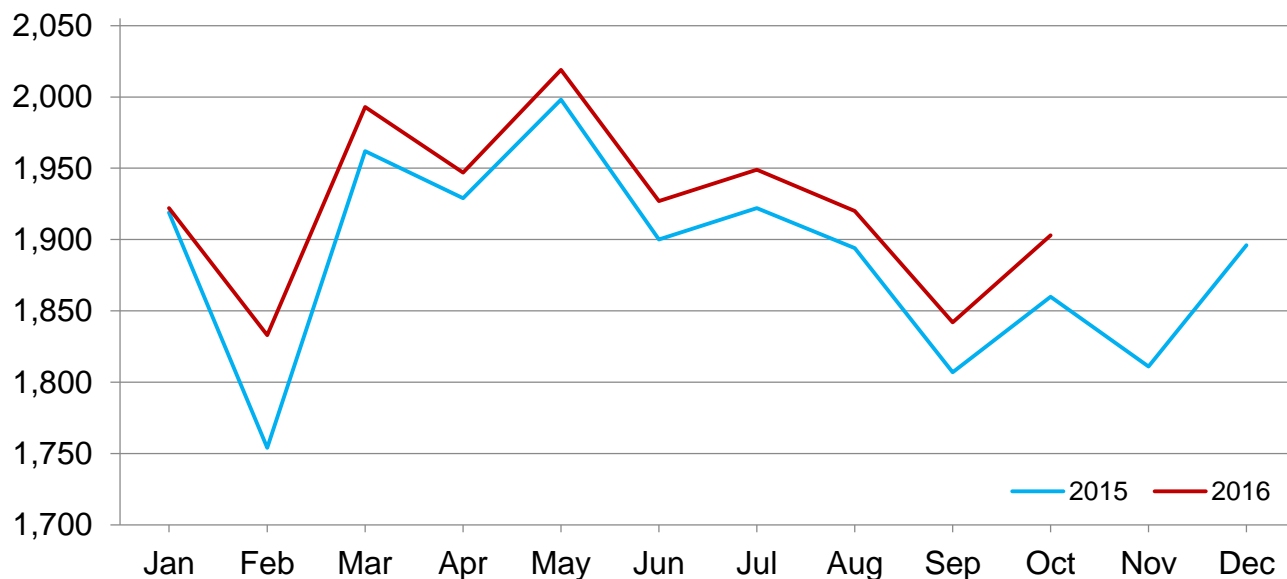
- Represents zero.

<sup>1</sup> Includes dry cows. Excludes heifers not yet fresh.

<sup>2</sup> Excludes milk sucked by calves.

## Monthly Milk per Cow – 23 Selected States

Pounds



## Statistical Methodology

**Survey Procedures:** Primary data used to determine these estimates were obtained from a sample of producers. Individual States maintain a list of all known milk producers and information on the size of their herd. States use all known sources of producers to ensure that their lists are as complete as possible. Generally, all large producers and a sample of small producers are included in the survey. Questionnaires are mailed to producers near the end of the month to obtain data for the first day of the month. Additional reports are obtained by telephone, as needed, to supplement the mail response. Where feasible, States utilize state and federal administrative data to estimate milk production. This eliminates duplication of data gathering by different government agencies. Indications of milk cow inventory are also obtained in the January Cattle Survey.

**Estimation Procedures:** State offices prepare these estimates by using a combination of survey indications, historic trends, and any available administrative data. Individual State estimates are reviewed by the Agricultural Statistics Board for reasonableness.

**Revision Policy:** Milk production, milk per cow, and number of milk cows are subject to revision the following month after initial publication for monthly States or the following quarter for the quarterly States. Normally, administrative data from Federal Market Orders, State Departments of Agriculture, or other sources are the main basis for revisions. However, administrative data for all States may not be available in time for these revisions. Estimates are again subject to revisions in February each year based on additional administrative data. In the event that additional changes are necessary, a third revision is possible in February the following year. Estimates are again reviewed after data from the five-year Census of Agriculture are available. No revisions are made after that date.

**Reliability:** Since all operations with dairy animals are not included in the sample, survey estimates are subject to sampling variability. Survey results are also subject to non-sampling errors such as omissions, duplications, and mistakes in reporting, recording, and processing the data. The effects of these errors cannot be measured directly. They are minimized through rigid quality controls in the data collection process and through a careful review of all reported data for consistency and reasonableness.

To assist users in evaluating the reliability of the estimates in this report, the "Root Mean Square Error" is shown for selected items in the table below. The "Root Mean Square Error" is a statistical measure based on past performance and is computed using the differences between first and final estimates. The "Root Mean Square Error" for the 23 State milk production estimates over the past 24 months is 0.2 percent. This means that chances are 2 out of 3 that the final estimate will not be above or below the current estimate of 16.5 billion pounds by more than 0.2 percent. Chances are 9 out of 10 that the difference will not exceed 0.3 percent.

### Reliability of Monthly Milk Production Estimates

[Based on data for the past 24 months]

Item	Root mean square error	90 percent confidence level	Difference between first and latest estimate				
			Average	Smallest	Largest	Months	
						Below latest	Above latest
	(percent)	(percent)	(1,000)	(1,000)	(1,000)	(number)	(number)
Milk production .....	0.2	0.3	22	2	71	17	7
All Milk cows .....	0.0	0.1	3	0	12	14	5

## Information Contacts

Listed below are the commodity specialists in the Livestock Branch of the National Agricultural Statistics Service to contact for additional information. E-mail inquiries may be sent to [nass@nass.usda.gov](mailto:nass@nass.usda.gov).

Dan Kerestes, Chief, Livestock Branch .....	(202) 720-3570
Scott Hollis, Head, Livestock Section .....	(202) 690-2424
Sherry Bertramsen – Livestock Slaughter .....	(202) 720-3240
Doug Bounds – Hogs and Pigs .....	(202) 720-3106
David Colwell – Sheep and Goats .....	(202) 720-8784
Donnie Fike – Dairy Products .....	(202) 690-3236
Michael Klamm – Cattle, Cattle on Feed .....	(202) 720-3040
Mike Miller – Milk Production and Milk Cows .....	(202) 720-3278

## Access to NASS Reports

For your convenience, you may access NASS reports and products the following ways:

- All reports are available electronically, at no cost, on the NASS web site: [www.nass.usda.gov](http://www.nass.usda.gov)
- Both national and state specific reports are available via a free e-mail subscription. To set-up this free subscription, visit [www.nass.usda.gov](http://www.nass.usda.gov) and click on “National” or “State” in upper right corner above “search” box to create an account and select the reports you would like to receive.

For more information on NASS surveys and reports, call the NASS Agricultural Statistics Hotline at (800) 727-9540, 7:30 a.m. to 4:00 p.m. ET, or e-mail: [nass@nass.usda.gov](mailto:nass@nass.usda.gov).

The U.S. Department of Agriculture (USDA) prohibits discrimination against its customers, employees, and applicants for employment on the basis of race, color, national origin, age, disability, sex, gender identity, religion, reprisal, and where applicable, political beliefs, marital status, familial or parental status, sexual orientation, or all or part of an individual's income is derived from any public assistance program, or protected genetic information in employment or in any program or activity conducted or funded by the Department. (Not all prohibited bases will apply to all programs and/or employment activities.)

If you wish to file a Civil Rights program complaint of discrimination, complete the [USDA Program Discrimination Complaint Form](#) (PDF), found online at [http://www.ascr.usda.gov/complaint\\_filing\\_cust.html](http://www.ascr.usda.gov/complaint_filing_cust.html), or at any USDA office, or call (866) 632-9992 to request the form. You may also write a letter containing all of the information requested in the form. Send your completed complaint form or letter to us by mail at U.S. Department of Agriculture, Director, Office of Adjudication, 1400 Independence Avenue, S.W., Washington, D.C. 20250-9410, by fax (202) 690-7442 or email at [program.intake@usda.gov](mailto:program.intake@usda.gov).



**February 23-24, 2017**

**Meet the New Administration**

**Sessions**

**Commodity Outlooks \* Farm Income \* Food Prices**

**Food Safety \* Technology \* Trade \* Weather**



United States Department of Agriculture

[www.usda.gov/oce/forum](http://www.usda.gov/oce/forum)