



Released December 19, 2017, by the National Agricultural Statistics Service (NASS), Agricultural Statistics Board, United States Department of Agriculture (USDA).

November Milk Production up 1.1 Percent

Milk production in the 23 major States during November totaled 16.2 billion pounds, up 1.1 percent from November 2016. October revised production, at 16.7 billion pounds, was up 1.3 percent from October 2016. The October revision represented a decrease of 27 million pounds or 0.2 percent from last month's preliminary production estimate.

Production per cow in the 23 major States averaged 1,861 pounds for November, 9 pounds above November 2016. This is the highest production per cow for the month of November since the 23 State series began in 2003.

The number of milk cows on farms in the 23 major States was 8.73 million head, 57,000 head more than November 2016, but unchanged from October 2017.

November Milk Production in the United States up 1.0 Percent

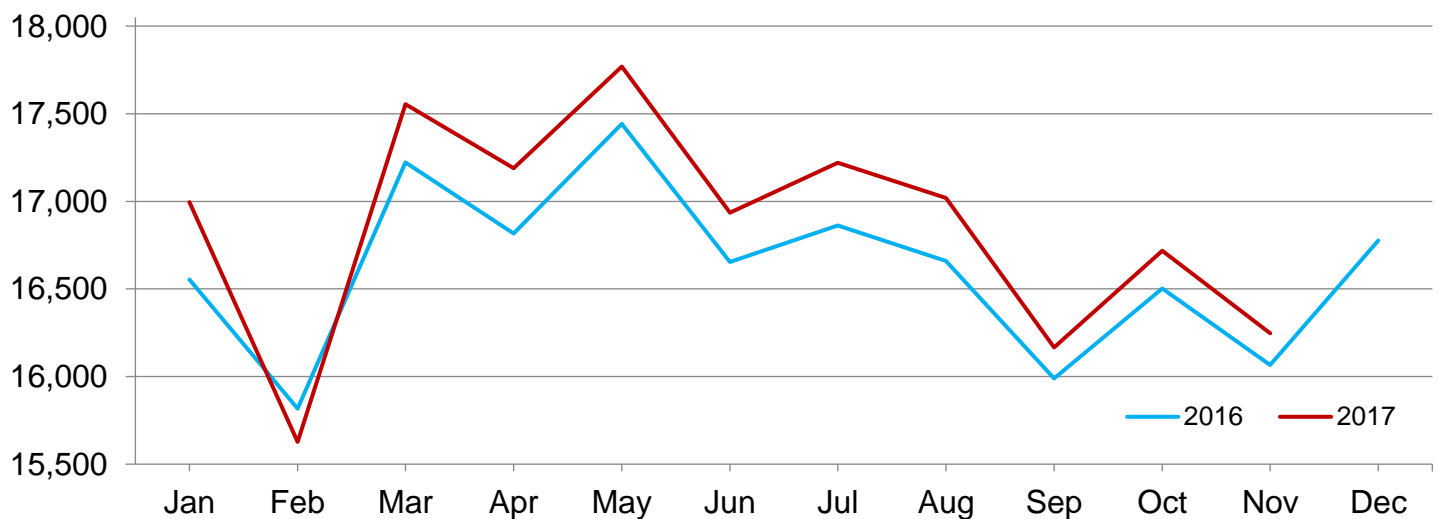
Milk production in the United States during November totaled 17.3 billion pounds, up 1.0 percent from November 2016.

Production per cow in the United States averaged 1,839 pounds for November, 9 pounds above November 2016.

The number of milk cows on farms in the United States was 9.40 million head, 53,000 head more than November 2016, but unchanged from October 2017.

Monthly Milk Production – 23 Selected States

Million pounds



Milk Cows and Production by Quarter – United States: 2016-2017

[May not add due to rounding. Blank data cells indicate estimation period has not yet begun]

Quarter	Milk cows ¹		Milk per cow ²		Milk production ²		
	2016	2017	2016	2017	2016	2017	Change from 2016
	(1,000 head)	(1,000 head)	(pounds)	(pounds)	(million pounds)	(million pounds)	(percent)
January-March	9,312	9,370	5,691	5,717	52,998	53,568	1.1
April-June	9,323	9,398	5,828	5,886	54,331	55,314	1.8
July-September	9,331	9,403	5,636	5,688	52,590	53,486	1.7
October-December	9,344		5,620		52,517		
Annual	9,328		22,774		212,436		

¹ Includes dry cows. Excludes heifers not yet fresh.

² Excludes milk sucked by calves.

Milk Cows and Production by Month – 23 Selected States: 2016-2017

[May not add due to rounding. Blank data cells indicate estimation period has not yet begun]

Month	Milk cows ¹		Milk per cow ²		Milk production ²		
	2016	2017	2016	2017	2016	2017	Change from 2016
	(1,000 head)	(1,000 head)	(pounds)	(pounds)	(million pounds)	(million pounds)	(percent)
January	8,621	8,691	1,920	1,955	16,553	16,995	2.7
February	8,628	8,694	1,833	1,797	15,817	15,627	-1.2
March	8,637	8,711	1,994	2,015	17,222	17,554	1.9
April	8,638	8,720	1,947	1,971	16,817	17,189	2.2
May	8,641	8,727	2,019	2,036	17,442	17,769	1.9
June	8,648	8,731	1,926	1,940	16,654	16,935	1.7
July	8,658	8,732	1,948	1,972	16,863	17,220	2.1
August	8,666	8,740	1,922	1,947	16,659	17,019	2.2
September	8,664	8,736	1,845	1,851	15,989	16,166	1.1
October	8,668	8,732	1,904	1,914	16,503	16,717	1.3
November	8,675	8,732	1,852	1,861	16,066	16,247	1.1
December	8,683		1,932		16,777		
Annual	8,652		23,042		199,362		

¹ Includes dry cows. Excludes heifers not yet fresh.

² Excludes milk sucked by calves.

Estimated Milk Cows and Production by Month – United States: 2016-2017

[May not add due to rounding. Blank data cells indicate estimation period has not yet begun]

Month	Milk cows ¹		Milk per cow ²		Milk production ²		
	2016	2017	2016	2017	2016	2017	Change from 2016
	(1,000 head)	(1,000 head)	(pounds)	(pounds)	(million pounds)	(million pounds)	(percent)
January	9,304	9,362	1,902	1,938	17,693	18,145	2.6
February	9,311	9,365	1,815	1,782	16,904	16,684	-1.3
March	9,321	9,382	1,974	1,997	18,401	18,739	1.8
April	9,321	9,392	1,925	1,951	17,947	18,320	2.1
May	9,322	9,400	1,997	2,015	18,613	18,942	1.8
June	9,326	9,402	1,906	1,920	17,771	18,052	1.6
July	9,329	9,403	1,920	1,943	17,908	18,269	2.0
August	9,334	9,404	1,895	1,920	17,692	18,056	2.1
September	9,331	9,401	1,821	1,825	16,990	17,161	1.0
October	9,335	9,397	1,882	1,892	17,565	17,778	1.2
November	9,344	9,397	1,830	1,839	17,100	17,279	1.0
December	9,354		1,908		17,852		
Annual	9,328		22,774		212,436		

¹ Includes dry cows. Excludes heifers not yet fresh.

² Excludes milk sucked by calves.

Milk Cows and Production – 23 Selected States: November 2016 and 2017

[May not add due to rounding]

State	Milk cows ¹		Milk per cow ²		Milk production ²		Change from 2016
	2016	2017	2016	2017	2016	2017	
	(1,000 head)	(1,000 head)	(pounds)	(pounds)	(million pounds)	(million pounds)	(percent)
Arizona	196	205	1,900	1,895	372	388	4.3
California	1,757	1,743	1,830	1,825	3,215	3,181	-1.1
Colorado	154	163	2,130	2,135	328	348	6.1
Florida	121	124	1,595	1,575	193	195	1.0
Idaho	599	600	1,970	1,955	1,180	1,173	-0.6
Illinois	93	93	1,610	1,680	150	156	4.0
Indiana	185	187	1,815	1,855	336	347	3.3
Iowa	215	219	1,905	1,940	410	425	3.7
Kansas	149	152	1,890	1,880	282	286	1.4
Michigan	423	428	2,085	2,105	882	901	2.2
Minnesota	461	457	1,690	1,730	779	791	1.5
New Mexico	323	329	1,980	1,985	640	653	2.0
New York	620	625	1,925	1,905	1,194	1,191	-0.3
Ohio	262	264	1,670	1,675	438	442	0.9
Oregon	124	123	1,615	1,625	200	200	-
Pennsylvania	525	525	1,640	1,675	861	879	2.1
South Dakota	116	117	1,820	1,805	211	211	-
Texas	490	515	1,875	1,890	919	973	5.9
Utah	92	97	1,875	1,860	173	180	4.0
Vermont	129	128	1,700	1,705	219	218	-0.5
Virginia	88	87	1,535	1,620	135	141	4.4
Washington	275	274	1,915	1,910	527	523	-0.8
Wisconsin	1,278	1,277	1,895	1,915	2,422	2,445	0.9
23-State Total	8,675	8,732	1,852	1,861	16,066	16,247	1.1

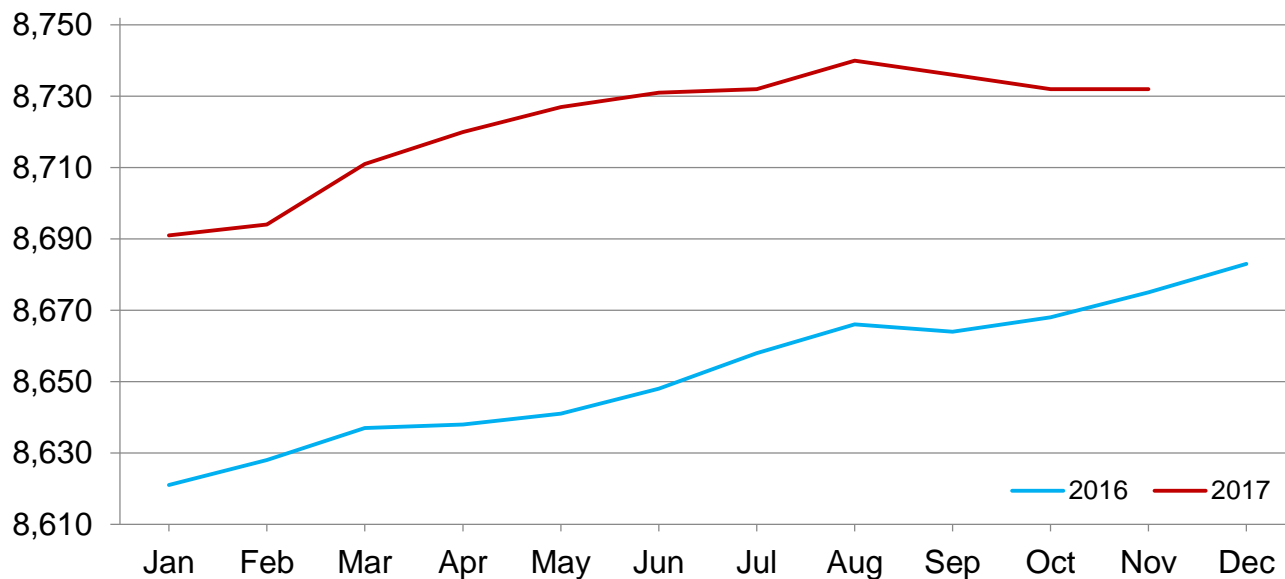
- Represents zero.

¹ Includes dry cows. Excludes heifers not yet fresh.

² Excludes milk sucked by calves.

Monthly Milk Cows – 23 Selected States

Thousand head



Milk Cows and Production – 23 Selected States: October 2016 and 2017

[May not add due to rounding]

	Milk cows ¹		Milk per cow ²		Milk production ²		Change from 2016
	2016	2017	2016	2017	2016	2017	
	(1,000 head)	(1,000 head)	(pounds)	(pounds)	(million pounds)	(million pounds)	(percent)
Arizona	197	205	1,930	1,910	380	392	3.2
California	1,758	1,744	1,880	1,870	3,305	3,261	-1.3
Colorado	153	163	2,175	2,175	333	355	6.6
Florida	120	124	1,475	1,460	177	181	2.3
Idaho	599	600	2,065	2,045	1,237	1,227	-0.8
Illinois	93	93	1,620	1,680	151	156	3.3
Indiana	184	187	1,880	1,910	346	357	3.2
Iowa	215	219	1,955	1,985	420	435	3.6
Kansas	147	152	1,925	1,935	283	294	3.9
Michigan	422	428	2,140	2,185	903	935	3.5
Minnesota	461	457	1,720	1,790	793	818	3.2
New Mexico	321	329	2,025	2,000	650	658	1.2
New York	620	624	2,000	1,980	1,240	1,236	-0.3
Ohio	263	264	1,750	1,745	460	461	0.2
Oregon	124	123	1,695	1,700	210	209	-0.5
Pennsylvania	526	525	1,695	1,710	892	898	0.7
South Dakota	115	117	1,870	1,870	215	219	1.9
Texas	490	515	1,885	1,890	924	973	5.3
Utah	91	97	1,955	1,950	178	189	6.2
Vermont	129	128	1,750	1,765	226	226	-
Virginia	88	87	1,585	1,630	139	142	2.2
Washington	275	274	2,005	1,995	551	547	-0.7
Wisconsin	1,277	1,277	1,950	1,995	2,490	2,548	2.3
23-State Total	8,668	8,732	1,904	1,914	16,503	16,717	1.3

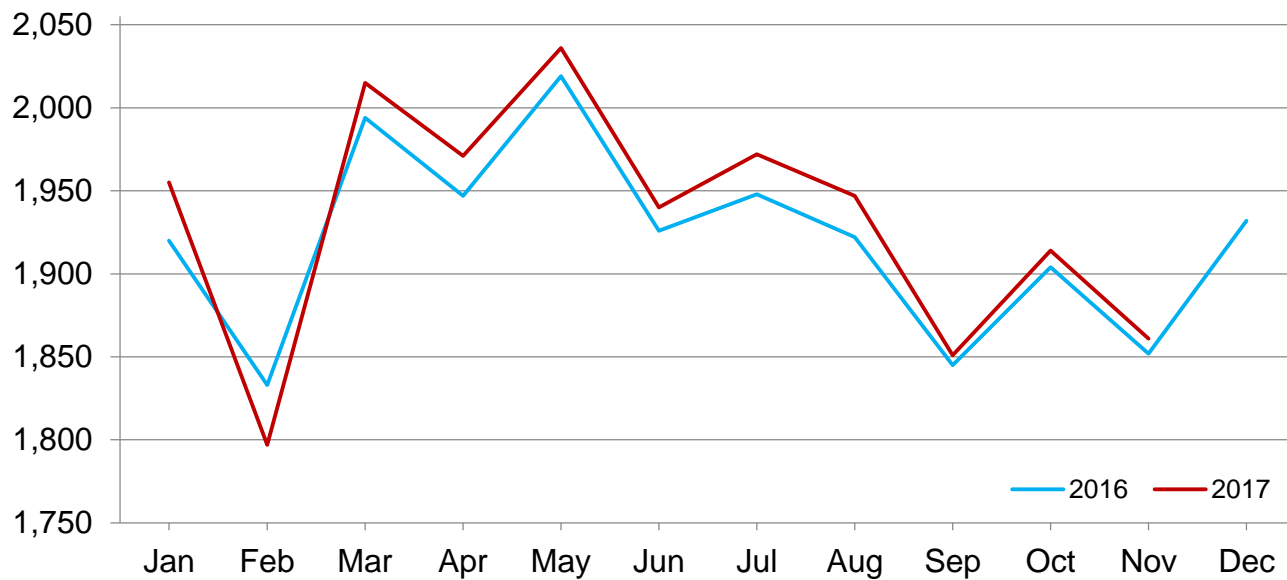
- Represents zero.

¹ Includes dry cows. Excludes heifers not yet fresh.

² Excludes milk sucked by calves.

Monthly Milk per Cow – 23 Selected States

Pounds



Statistical Methodology

Survey Procedures: Primary data used to determine these estimates were obtained from a sample of producers. Individual States maintain a list of all known milk producers and information on the size of their herd. States use all known sources of producers to ensure that their lists are as complete as possible. Generally, all large producers and a sample of small producers are included in the survey. Questionnaires are mailed to producers near the end of the month to obtain data for the first day of the month. Additional reports are obtained by telephone, as needed, to supplement the mail response. Where feasible, States utilize state and federal administrative data to estimate milk production. This eliminates duplication of data gathering by different government agencies. Indications of milk cow inventory are also obtained in the January Cattle Survey.

Estimation Procedures: State offices prepare these estimates by using a combination of survey indications, historic trends, and any available administrative data. Individual State estimates are reviewed by the Agricultural Statistics Board for reasonableness.

Revision Policy: Milk production, milk per cow, and number of milk cows are subject to revision the following month after initial publication for monthly States or the following quarter for the quarterly States. Normally, administrative data from Federal Market Orders, State Departments of Agriculture, or other sources are the main basis for revisions. However, administrative data for all States may not be available in time for these revisions. Estimates are again subject to revisions in February each year based on additional administrative data. In the event that additional changes are necessary, a third revision is possible in February the following year. Estimates are again reviewed after data from the five-year Census of Agriculture are available. No revisions are made after that date.

Reliability: Since all operations with dairy animals are not included in the sample, survey estimates are subject to sampling variability. Survey results are also subject to non-sampling errors such as omissions, duplications, and mistakes in reporting, recording, and processing the data. The effects of these errors cannot be measured directly. They are minimized through rigid quality controls in the data collection process and through a careful review of all reported data for consistency and reasonableness.

To assist users in evaluating the reliability of the estimates in this report, the "Root Mean Square Error" is shown for selected items in the table below. The "Root Mean Square Error" is a statistical measure based on past performance and is computed using the differences between first and final estimates. The "Root Mean Square Error" for the 23 State milk production estimates over the past 24 months is 0.1 percent. This means that chances are 2 out of 3 that the final estimate will not be above or below the current estimate of 16.2 billion pounds by more than 0.1 percent. Chances are 9 out of 10 that the difference will not exceed 0.2 percent.

Reliability of Monthly Milk Production Estimates

[Based on data for the past 24 months]

Item	Root mean square error	90 percent confidence level	Difference between first and latest estimate				
			Average	Smallest	Largest	Months	
						Below latest	Above latest
	(percent)	(percent)	(1,000)	(1,000)	(1,000)	(number)	(number)
Milk production	0.1	0.2	16	1	41	12	12
All Milk cows	0.1	0.1	4	0	10	9	13

Information Contacts

Listed below are the commodity specialists in the Livestock Branch of the National Agricultural Statistics Service to contact for additional information. E-mail inquiries may be sent to nass@nass.usda.gov.

Travis Averill, Chief, Livestock Branch	(202) 720-3570
Scott Hollis, Head, Livestock Section	(202) 690-2424
Sherry Bertramsen – Livestock Slaughter	(202) 720-3240
Donnie Fike – Dairy Products	(202) 690-3236
Heidi Gleich – Cattle, Cattle on Feed	(202) 720-3040
Mike Miller – Milk Production and Milk Cows	(202) 720-3278
Seth Riggins – Hogs and Pigs	(202) 720-3106
Vacant – Sheep and Goats	(202) 720-8784

Access to NASS Reports

For your convenience, you may access NASS reports and products the following ways:

- All reports are available electronically, at no cost, on the NASS web site: www.nass.usda.gov
- Both national and state specific reports are available via a free e-mail subscription. To set-up this free subscription, visit www.nass.usda.gov and click on “National” or “State” in upper right corner above “search” box to create an account and select the reports you would like to receive.

For more information on NASS surveys and reports, call the NASS Agricultural Statistics Hotline at (800) 727-9540, 7:30 a.m. to 4:00 p.m. ET, or e-mail: nass@nass.usda.gov.

The U.S. Department of Agriculture (USDA) prohibits discrimination against its customers, employees, and applicants for employment on the basis of race, color, national origin, age, disability, sex, gender identity, religion, reprisal, and where applicable, political beliefs, marital status, familial or parental status, sexual orientation, or all or part of an individual's income is derived from any public assistance program, or protected genetic information in employment or in any program or activity conducted or funded by the Department. (Not all prohibited bases will apply to all programs and/or employment activities.)

If you wish to file a Civil Rights program complaint of discrimination, complete the [USDA Program Discrimination Complaint Form](#) (PDF), found online at http://www.ascr.usda.gov/complaint_filing_cust.html, or at any USDA office, or call (866) 632-9992 to request the form. You may also write a letter containing all of the information requested in the form. Send your completed complaint form or letter to us by mail at U.S. Department of Agriculture, Director, Office of Adjudication, 1400 Independence Avenue, S.W., Washington, D.C. 20250-9410, by fax (202) 690-7442 or email at program.intake@usda.gov.



United States Department of Agriculture

USDA's 94th Annual Agricultural Outlook Forum



THE ROOTS OF PROSPERITY

February 22-23, 2018
Crystal Gateway Marriott Hotel
Arlington, Virginia

www.usda.gov/oce/forum