



United States
Department of
Agriculture

National
Agricultural
Statistics
Service



Fr Nt 1-3 (99)

Noncitrus Fruits and Nuts 1998 Summary

July 1999

USDA



1998 Noncitrus Utilized Production and Value Down from 1997

In 1998, the Nation's utilized production of the leading noncitrus fruit crops totaled 16.5 million tons, down 10 percent from 1997's record production. Utilized production decreased from last year for all crops except apples, bananas, tart cherries, dates, kiwifruit, papayas, pineapples, other prunes and plums, and strawberries. Grape utilized production accounted for almost three-fourths of the decline from 1997.

Value of utilized production for noncitrus fruit crops totaled 7.24 billion dollars, down 11 percent from 1997. The value of apple, grape, and peach production declined by 18 percent, 16 percent, and less than 1 percent, respectively. Strawberries showed an increase of 14 percent.

Highlights

Utilized apple production for 1998 was estimated at 10.5 billion pounds, 2 percent greater than 1997. Production in Eastern States was reduced as a result of dry conditions but was more than offset by large production increases in Washington, Colorado, and Idaho.

Utilized grape production for 1998 totaled 5.90 million tons, down 19 percent from 1997's record crop but 7 percent above the 1996 crop. California production was down 19 percent from last year, with raisin, table, and wine type production decreasing 25 percent, 22 percent, and 13 percent, respectively. Washington production decreased 30 percent from 1997, while production in Michigan increased 15 percent. New York and Pennsylvania also declined from a year ago.

Utilized peach production in 1998 was estimated at 2.35 billion pounds, down 6 percent from last year but 15 percent above 1996. The California crop, accounting for 74 percent of the U.S. peach crop, was down 5 percent from 1997.

Utilized pear production, at 953,000 tons, was down 9 percent from last year's crop. Washington, California, and Oregon the top three producing states, were down 18 percent, 2 percent, and 4 percent, respectively. New York, Pennsylvania, and Michigan all posted larger crops, however, New York left 13 percent of their total production unharvested due to poor fruit quality caused by bad weather during the growing season.

U.S. Nut Production and Value Drop Sharply

The 1998 U.S. nut production (in-shell basis) dropped 24 percent to 907,800 tons. Pistachios, at 188 million pounds, were the only tree nut to show a production increase over 1997, up 4 percent. Hazelnut production led the declines, plummeting 67 percent to 15,500 tons. Pecans fell 56 percent to a production level of 146 million pounds. Almonds, at 520 million pounds, showed a decline of 31 percent. Walnuts were off 16 percent with 227,000 tons produced. Alternate bearing cycles and adverse weather were the primary causes of the decreases.

The 1998 U.S. value of utilized production decreased 35 percent to 1.35 billion dollars. Hazelnut value, at 14.9 million dollars, was down 65 percent despite an improved price per ton. Almonds accounted for 699 million dollars, down 40 percent. Macadamias, at 37.4 million dollars, and pistachios, at 194 million dollars, were off 14 percent and 5 percent, respectively. In spite of drastically lower production, the pecan value was only off 32 percent due to sharply higher prices.

**Noncitrus Fruits and Nuts: Bearing Acreage and Yield per Acre
by Crop United States, 1996-98**

Crop	Bearing Acreage			Yield per Acre		
	1996	1997	1998	1996	1997	1998
	<i>Acres</i>	<i>Acres</i>	<i>Acres</i>	<i>Tons</i>	<i>Tons</i>	<i>Tons</i>
Noncitrus Fruits						
Apples	467,550	467,950	467,600	11.10	11.00	12.20
Apricots	21,580	21,400	21,380	3.67	6.51	5.53
Avocados	65,800	66,050	65,640	2.90	2.70	2.20
Bananas (HI) ¹	960	950	1,420	6.77	7.26	7.39
Berries ¹	57,280	60,790	61,090	2.04	2.58	2.35
Cherries, Sweet	54,780	56,640	57,290	2.81	3.99	3.66
Cherries, Tart	42,550	40,330	40,320	3.19	3.63	4.30
Cranberries	34,000	35,700	36,700	6.87	7.70	7.34
Dates (CA)	4,680	4,800	4,900	4.91	4.38	4.53
Figs (CA)	15,400	16,400	16,300	2.95	3.51	3.11
Grapes	808,830	835,270	856,170	6.87	8.73	6.89
Guavas (HI) ¹	750	730	710	10.90	10.90	10.30
Kiwifruit (CA)	5,700	5,300	5,300	5.53	6.60	6.91
Nectarines (CA)	35,000	36,000	35,500	7.06	7.33	6.48
Olives (CA)	33,700	35,300	35,300	4.93	2.95	2.55
Papayas (HI) ¹	1,835	1,985	2,120	11.40	9.77	9.43
Peaches	164,335	157,750	159,440	6.40	8.32	7.62
Pears	68,700	66,880	66,180	11.90	15.60	14.40
Pineapples (HI) ²	20,000	19,900	21,000			
Plums (CA)	42,600	42,000	42,000	5.35	5.86	4.45
Prunes (CA)	85,000	82,000	83,000	8.28	7.65	3.97
Prunes & Plums ³	5,190	4,720	4,470	3.76	5.40	5.73
Strawberries ¹	47,670	44,260	45,230	17.10	18.40	18.70
Total	2,083,890	2,103,105	2,129,060			
Tree Nuts						
Almonds (CA)	428,000	442,000	454,000	0.96	1.34	1.03
Hazelnuts	28,600	29,000	29,530	0.66	1.62	0.52
Macadamias (HI)	19,200	19,200	19,200	1.47	1.51	1.50
Pecans ⁴						
Pistachios (CA)	64,300	65,400	65,900	0.82	1.38	1.43
Walnuts (CA)	192,000	193,000	193,000	1.08	1.39	1.18
Total	732,100	748,600	761,630			

¹ Harvested acreage. Yield based on utilized production.

² Acreage is total acres in crop, not harvested acreage. Yield is not estimated.

³ ID, MI, OR, and WA.

⁴ Bearing acreage and yield not calculated.

**Noncitrus Fruits and Nuts: Total and Utilized Production
by Crop, United States, 1996-98**

Crop	Total Production			Utilized Production		
	1996	1997	1998	1996	1997	1998
	<i>1,000 Tons Fresh Equivalent</i>	<i>1,000 Tons Fresh Equivalent</i>	<i>1,000 Tons Fresh Equivalent</i>	<i>1,000 Tons Fresh Equivalent</i>	<i>1,000 Tons Fresh Equivalent</i>	<i>1,000 Tons Fresh Equivalent</i>
Noncitrus Fruits						
Apples	5,191.0	5,161.9	5,693.7	5,165.0	5,127.2	5,250.0
Apricots	79.3	139.2	118.3	79.3	129.6	107.9
Avocados	190.7	178.3	144.3	190.7	178.3	144.3
Bananas (HI) ¹				6.5	6.9	10.5
Berries	119.0	162.0	148.5	117.0	156.9	143.6
Cherries, Sweet	154.1	225.8	209.7	151.7	223.5	206.6
Cherries, Tart	135.9	146.5	173.5	130.1	141.7	152.2
Cranberries	233.6	274.9	269.4	233.6	274.9	269.4
Dates (CA)	23.0	21.0	22.2	23.0	21.0	22.2
Figs (CA)	45.5	57.5	50.7	45.5	57.5	50.7
Grapes	5,553.6	7,290.9	5,903.0	5,537.3	7,287.4	5,899.4
Guavas (HI) ¹				8.2	8.0	7.3
Kiwifruit (CA)	31.5	35.0	36.6	28.0	31.8	33.0
Nectarines (CA)	247.0	264.0	230.0	247.0	264.0	230.0
Olives (CA)	166.0	104.0	90.0	166.0	104.0	90.0
Papayas (HI) ¹				20.9	19.4	20.0
Peaches	1,052.3	1,312.3	1,214.7	1,021.9	1,254.2	1,176.8
Pears	820.6	1,042.5	955.1	820.3	1,041.9	952.8
Pineapples (HI) ¹				347.0	324.0	332.0
Plums (CA)	228.0	246.0	187.0	228.0	246.0	187.0
Prunes (CA)	704.0	627.3	329.6	704.0	627.3	329.6
Prunes & Plums ²	19.5	25.5	25.6	18.7	23.7	24.8
Strawberries	813.0	814.4	844.3	813.0	813.9	844.1
Total				16,102.7	18,363.1	16,484.2
	<i>1,000 Tons In-Shell Equivalent</i>	<i>1,000 Tons In-Shell Equivalent</i>	<i>1,000 Tons In-Shell Equivalent</i>	<i>1,000 Tons In-Shell Equivalent</i>	<i>1,000 Tons In-Shell Equivalent</i>	<i>1,000 Tons In-Shell Equivalent</i>
Tree Nuts ¹						
Almonds (CA)				412.0	593.9	469.3
Hazelnuts				19.0	47.0	15.5
Macadamias (HI)				28.3	29.0	28.8
Pecans				104.8	167.5	73.2
Pistachios (CA)				52.5	90.0	94.0
Walnuts (CA)				208.0	269.0	227.0
Total				824.6	1,196.4	907.8

¹ Only utilized production estimated.

² ID, MI, OR, and WA.

**Noncitrus Fruits and Nuts: Price and Value
by Crop, United States, 1996-98**

Crop ¹	Unit	Price			Value of Utilized Production		
		1996	1997	1998	1996	1997	1998
		<i>Dollars</i>	<i>Dollars</i>	<i>Dollars</i>	<i>1,000 Dollars</i>	<i>1,000 Dollars</i>	<i>1,000 Dollars</i>
Noncitrus Fruits							
Apples	Lb	0.159	0.154	0.123	1,641,462	1,575,403	1,290,855
Apricots	Ton	444.00	332.00	327.00	35,171	43,072	35,274
Avocados	Ton	1,430.00	1,560.00	1,480.00	272,784	277,754	213,395
Bananas (HI)	Lb	0.400	0.380	0.350	5,200	5,206	7,350
Berries	Lb	0.933	0.713	0.670	218,381	223,901	192,353
Cherries, Sweet	Ton	1,470.00	1,250.00	1,090.00	223,022	278,511	225,626
Tart	Lb	0.161	0.159	0.143	41,747	44,911	43,476
Cranberries ²	Bbl	65.90	63.70		307,827	350,146	
Dates (CA)	Ton	1,090.00	1,100.00	1,130.00	25,070	23,100	25,086
Figs (CA)	Ton	283.00	265.00	248.00	12,894	15,209	12,579
Grapes	Ton	429.00	428.00	445.00	2,376,111	3,122,195	2,625,401
Guavas (HI)	Lb	0.138	0.122	0.122	2,249	1,940	1,781
Kiwifruit (CA)	Ton	470.00	518.00	744.00	13,157	16,483	24,544
Nectarines (CA)	Ton	474.00	375.00	472.00	116,977	98,895	108,502
Olives (CA)	Ton	617.00	642.00	459.00	102,364	66,801	41,331
Papayas (HI)	Lb	0.408	0.489	0.316	17,054	18,978	12,589
Peaches	Lb	0.191	0.177	0.189	389,894	444,137	443,819
Pears	Ton	376.00	276.00	291.00	308,367	287,822	277,519
Pineapples (HI)	Ton	276.00	283.00	279.00	95,914	91,721	92,776
Plums (CA)	Ton	420.00	312.00	529.00	95,831	76,825	98,845
Prunes (CA)	Ton	839.00	798.00	836.00	187,097	163,590	86,108
Prunes & Plums ³	Ton	442.00	273.00	311.00	8,272	6,481	7,707
Strawberries	Cwt	47.30	55.50	60.90	768,943	903,350	1,027,929
Total ⁴					7,265,788	8,136,431	7,237,709
Almonds (CA) (Shelled)	Lb	2.08	1.56	1.40	1,018,368	1,160,640	698,600
Hazelnuts	Ton	860.00	899.00	964.00	16,341	42,267	14,942
Macadamias (HI)	Lb	0.780	0.750	0.650	44,070	43,500	37,375
Pecans	Lb	0.641	0.774	1.210	134,355	259,220	177,452
Pistachios (CA)	Lb	1.16	1.13	1.03	121,800	203,400	193,640
Walnuts (CA)	Ton	1,580.00	1,430.00	1,010.00	328,640	384,670	229,270
Total ⁴					1,663,574	2,093,697	1,351,279

¹ Ton refers to the 2,000 lb. short ton.

² Estimates for 1998 will be published on August 17, 1999.

³ ID, MI, OR, and WA.

⁴ Includes estimated 1998 value of production for cranberries. Used 1997 price to compute the 1998 value.

**Fruits and Nuts: Bearing Acreage,
United States, 1996-98**

Year	Citrus Fruits ¹	Major Deciduous Fruits ²	Miscellaneous Noncitrus ³	Nuts ⁴	Total
	<i>Acres</i>	<i>Acres</i>	<i>Acres</i>	<i>Acres</i>	<i>Acres</i>
1996	1,103,220	1,796,115	287,775	732,100	3,919,210
1997	1,152,000	1,810,940	292,165	748,600	4,003,705
1998	1,122,100	1,833,350	295,710	761,630	4,012,790

¹ Grapefruit, K-Early Citrus, lemons, limes, oranges, tangelos, tangerines, and Temples.

² Commercial apples, apricots, cherries, grapes, nectarines, peaches, pears, plums, and prunes.

³ Avocados, bananas, berries, cranberries, dates, figs, guavas, kiwifruit, olives, papayas, pineapples, and strawberries.

⁴ Almonds, hazelnuts, macadamia nuts, pistachios, and walnuts.

**Noncitrus Fruits: Production Utilization,
United States, 1996-98 ¹**

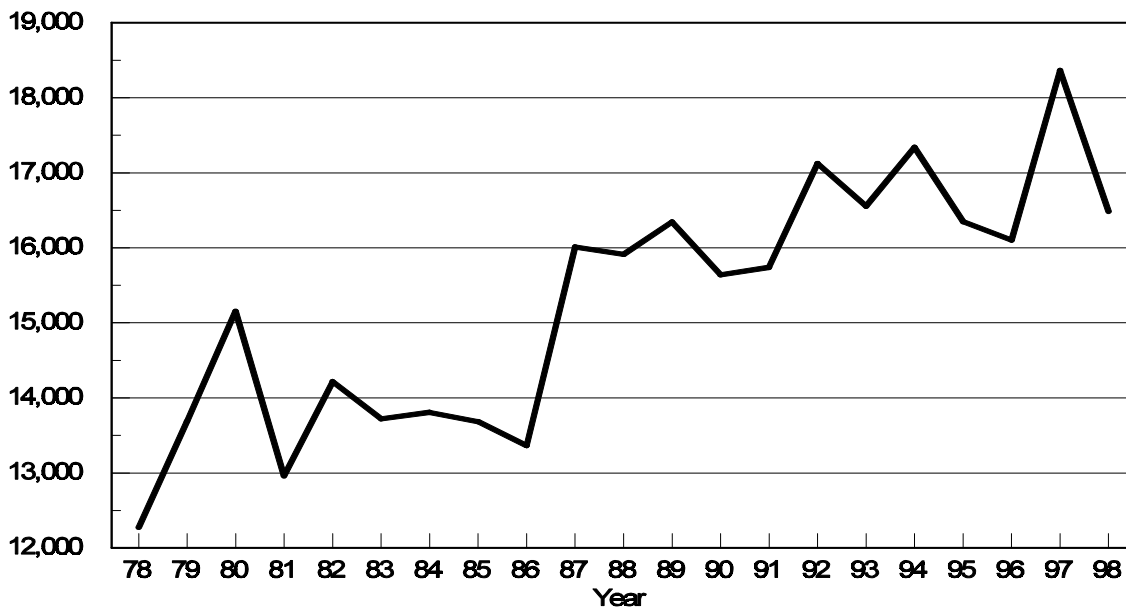
Year	Utilized Production	Fresh	Processed ²					
			Canned	Dried	Juice	Frozen	Wine	Other
	<i>1,000 Tons</i>	<i>1,000 Tons</i>	<i>1,000 Tons</i>	<i>1,000 Tons</i>	<i>1,000 Tons</i>	<i>1,000 Tons</i>	<i>1,000 Tons</i>	<i>1,000 Tons</i>
1996	16,102.7	6,312.5	1,872.8	2,274.8	1,581.7	603.9	3,043.1	180.3
1997	18,363.1	6,643.1	2,130.2	2,659.8	1,674.5	699.3	4,034.5	246.8
1998	16,484.2	6,502.7	1,836.4	1,984.4	1,606.6	766.0	3,314.9	203.8

¹ Cranberry quantity included in utilized production, excluded from fresh and processed breakdown.

² Processed strawberries are included in frozen.

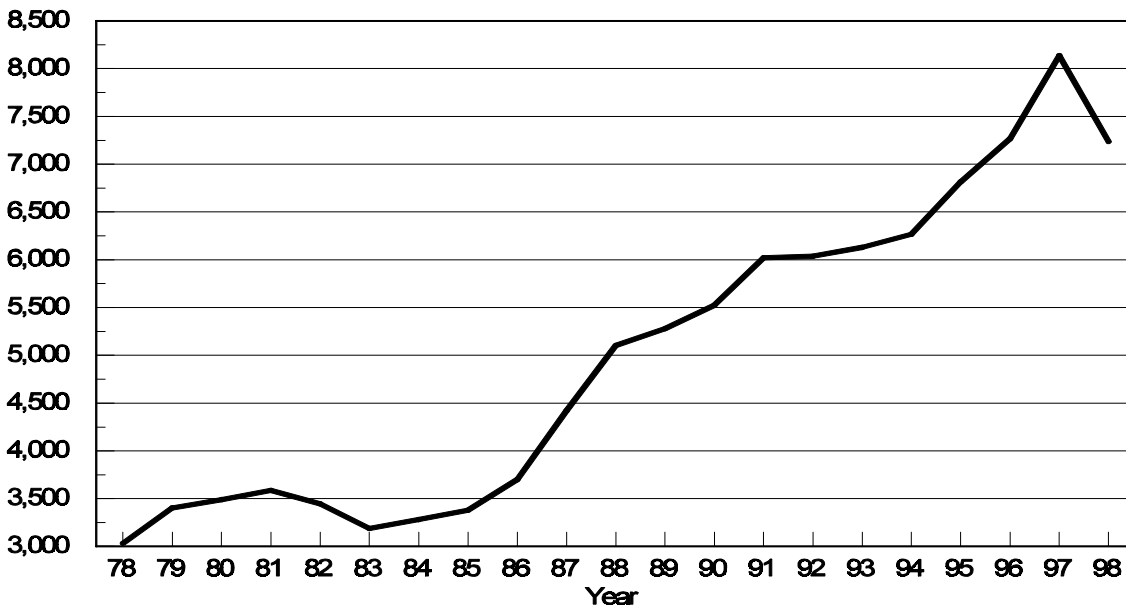
U.S. Noncitrus Fruits Utilized Production

1,000 Tons Fresh Equivalent



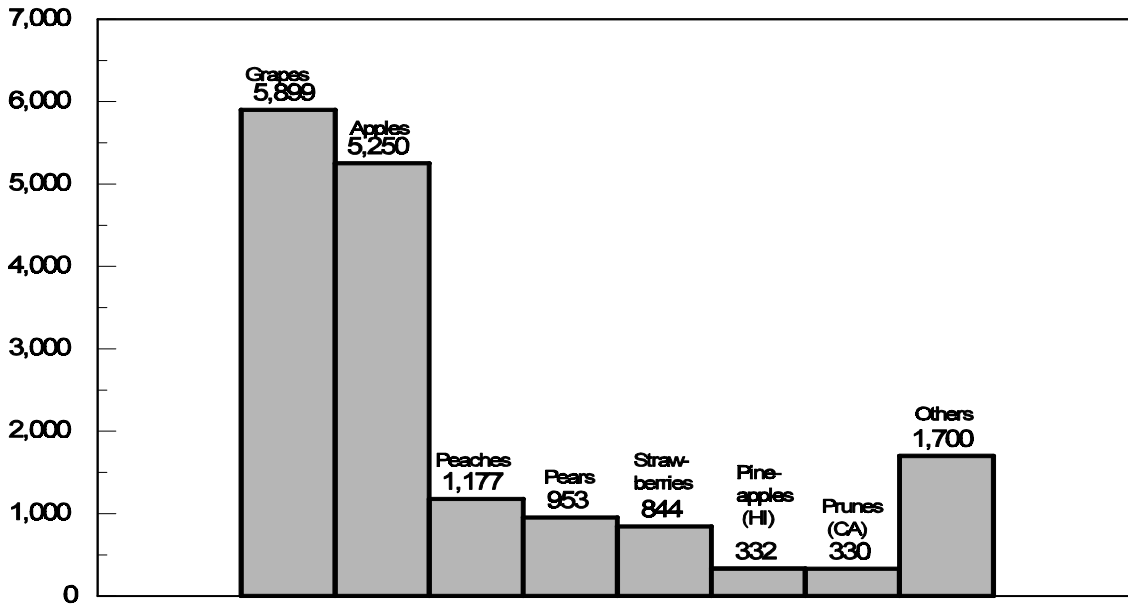
U.S. Noncitrus Fruits Value of Utilized Production

Million Dollars



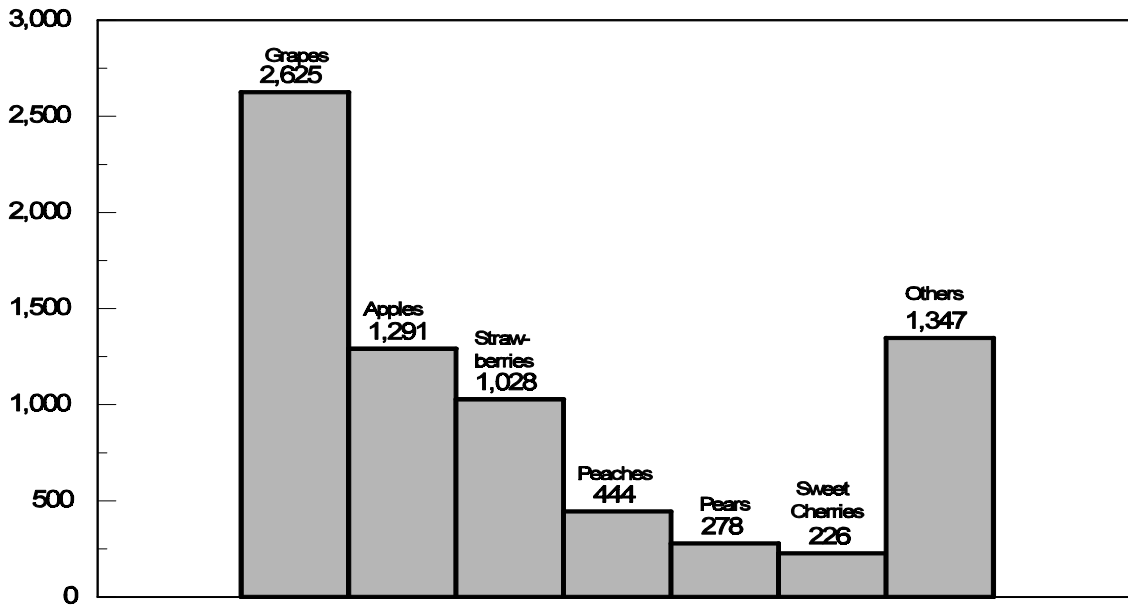
U.S. Noncitrus Fruits Utilized Production by Major Fruit, 1998

1,000 Tons Fresh Equivalent



U.S. Noncitrus Fruits Value of Utilized Production by Major Fruit, 1998

Million Dollars



**Apples, Commercial: Bearing Acreage and Yield
by State and United States, 1996-98**

State	Bearing Acreage			Yield per Acre ¹		
	1996	1997	1998	1996	1997	1998
	<i>Acres</i>	<i>Acres</i>	<i>Acres</i>	<i>Pounds</i>	<i>Pounds</i>	<i>Pounds</i>
AZ	4,000	3,700	3,800	25,000	12,200	12,100
AR	900	900	900	7,000	8,000	5,000
CA	38,000	38,500	37,000	25,000	25,000	22,000
CO	3,400	3,200	3,000	7,350	10,900	21,700
CT	2,400	2,400	2,400	8,330	10,000	7,290
DE ²	750			20,000		
GA	1,700	1,400	1,400	8,820	10,700	7,860
ID	6,600	6,600	6,600	28,800	16,700	25,800
IL	5,500	5,000	5,000	9,640	14,800	9,000
IN	4,000	4,000	4,000	12,000	12,500	13,500
IA	1,800	1,800	1,700	6,170	7,220	5,120
KS	450	650	600	4,440	11,500	2,670
KY	1,700	1,500	1,400	6,240	4,330	7,860
ME	4,700	4,700	4,700	13,800	13,600	9,470
MD	2,800	2,800	2,600	10,400	16,400	13,300
MA	5,250	5,250	5,250	10,400	11,400	5,520
MI	54,000	54,000	54,000	13,000	18,500	18,000
MN	2,800	2,800	2,800	7,500	7,860	8,500
MO	3,900	3,800	3,800	8,210	13,900	8,950
NH	3,000	2,950	2,950	13,000	13,700	6,440
NJ	3,700	3,500	3,500	16,200	15,700	15,700
NM	2,000	1,800	1,800	2,500	3,890	4,440
NY	57,500	55,000	55,000	17,900	20,400	19,500
NC	9,500	9,500	9,500	21,100	16,000	19,500
OH	7,800	7,900	7,900	11,500	7,590	10,100
OR	8,700	8,700	8,700	17,900	18,400	20,700
PA	23,000	23,000	23,000	17,000	23,300	17,200
RI	300	300	300	11,300	12,000	8,670
SC	2,900	2,900	2,700	10,300	20,700	16,700
TN	1,500	1,400	1,400	7,330	7,140	8,930
UT	2,800	2,800	2,800	17,100	15,000	17,500
VT	3,700	3,700	3,700	12,200	13,500	9,460
VA	17,300	17,000	17,000	15,900	15,900	16,500
WA	164,000	170,000	172,000	33,500	29,400	37,200
WV	9,000	8,000	8,000	11,700	14,400	13,800
WI	6,200	6,500	6,400	7,420	7,620	11,900
US	467,550	467,950	467,600	22,200	22,100	24,400

¹ Yield is based on total production, which includes unharvested production and fruit harvested but not sold due to market conditions.

² Estimates discontinued in 1997.

**Apples, Commercial: Total and Utilized Production
by State and United States, 1996-98**

State	Total Production			Utilized Production		
	1996	1997	1998	1996	1997	1998
	<i>Million Pounds</i>	<i>Million Pounds</i>	<i>Million Pounds</i>	<i>Million Pounds</i>	<i>Million Pounds</i>	<i>Million Pounds</i>
AZ	100.0	45.0	46.0	100.0	44.1	45.0
AR	6.3	7.2	4.5	5.8	7.1	3.6
CA	950.0	962.0	815.0	950.0	962.0	815.0
CO	25.0	35.0	65.0	24.0	34.0	59.0
CT	20.0	24.0	17.5	20.0	23.0	17.0
DE ¹	15.0			15.0		
GA	15.0	15.0	11.0	14.0	14.0	8.0
ID	190.0	110.0	170.0	190.0	110.0	130.0
IL	53.0	74.0	45.0	51.0	67.0	35.0
IN	48.0	50.0	54.0	46.0	48.0	50.0
IA	11.1	13.0	8.7	10.0	7.5	8.1
KS	2.0	7.5	1.6	1.8	6.4	0.9
KY	10.6	6.5	11.0	9.6	5.8	9.0
ME	65.0	64.0	44.5	63.0	62.0	43.0
MD	29.0	46.0	34.6	27.5	44.5	34.0
MA	54.5	60.0	29.0	53.0	58.5	27.0
MI	700.0	1,000.0	970.0	700.0	1,000.0	930.0
MN	21.0	22.0	23.8	18.8	17.5	18.7
MO	32.0	53.0	34.0	32.0	50.5	29.0
NH	39.0	40.5	19.0	38.0	40.0	19.0
NJ	60.0	55.0	55.0	58.0	55.0	54.0
NM	5.0	7.0	8.0	5.0	7.0	8.0
NY	1,030.0	1,120.0	1,070.0	1,030.0	1,120.0	960.0
NC	200.0	152.0	185.0	200.0	150.0	135.0
OH	90.0	60.0	80.0	90.0	60.0	75.0
OR	156.0	160.0	180.0	156.0	160.0	143.0
PA	391.0	535.0	395.0	391.0	525.0	388.0
RI	3.4	3.6	2.6	3.2	3.4	2.2
SC	30.0	60.0	45.0	28.0	56.0	42.0
TN	11.0	10.0	12.5	9.8	8.5	9.0
UT	48.0	42.0	49.0	44.0	41.0	31.0
VT	45.0	50.0	35.0	44.0	49.0	33.5
VA	275.0	270.0	280.0	260.0	262.0	269.0
WA	5,500.0	5,000.0	6,400.0	5,500.0	5,000.0	5,900.0
WV	105.0	115.0	110.0	100.0	110.0	107.0
WI	46.0	49.5	76.1	41.5	45.5	62.0
US	10,381.9	10,323.8	11,387.4	10,330.0	10,254.3	10,500.0

¹ Estimates discontinued in 1997.

**Apples, Commercial: Price and Value by State
by State and United States, 1996-98**

State	Price per Pound			Value of Utilized Production		
	1996	1997	1998	1996	1997	1998
	<i>Dollars</i>	<i>Dollars</i>	<i>Dollars</i>	<i>1,000 Dollars</i>	<i>1,000 Dollars</i>	<i>1,000 Dollars</i>
AZ	0.124	0.107	0.148	12,432	4,724	6,645
AR	0.178	0.289	0.227	1,031	2,053	816
CA	0.166	0.169	0.150	158,050	162,655	122,545
CO	0.202	0.151	0.119	4,837	5,138	7,038
CT	0.324	0.312	0.348	6,480	7,170	5,920
DE ¹	0.185			2,770		
GA	0.164	0.137	0.161	2,300	1,922	1,289
ID	0.136	0.139	0.076	25,860	15,290	9,920
IL	0.290	0.196	0.186	14,775	13,103	6,504
IN	0.268	0.218	0.245	12,331	10,469	12,236
IA	0.313	0.286	0.286	3,125	2,148	2,317
KS	0.258	0.185	0.256	464	1,186	230
KY	0.316	0.261	0.284	3,035	1,512	2,556
ME	0.202	0.193	0.230	12,746	11,992	9,880
MD	0.156	0.200	0.178	4,303	8,915	6,068
MA	0.262	0.258	0.320	13,910	15,120	8,628
MI	0.126	0.098	0.087	88,125	98,200	81,250
MN	0.460	0.443	0.444	8,644	7,757	8,304
MO	0.233	0.189	0.172	7,440	9,551	4,997
NH	0.224	0.210	0.283	8,500	8,400	5,368
NJ	0.151	0.132	0.122	8,781	7,271	6,608
NM	0.312	0.339	0.210	1,560	2,373	1,680
NY	0.135	0.126	0.114	138,850	141,320	109,560
NC	0.120	0.110	0.111	24,022	16,494	14,942
OH	0.266	0.221	0.204	23,970	13,274	15,322
OR	0.091	0.238	0.142	14,224	38,032	20,256
PA	0.129	0.133	0.139	50,282	69,825	54,055
RI	0.251	0.267	0.315	804	907	694
SC	0.138	0.122	0.197	3,874	6,844	8,278
TN	0.241	0.238	0.222	2,364	2,023	2,000
UT	0.136	0.165	0.145	5,984	6,747	4,480
VT	0.186	0.187	0.222	8,195	9,163	7,438
VA	0.116	0.106	0.117	30,160	27,741	31,575
WA	0.166	0.164	0.116	912,700	821,400	684,500
WV	0.111	0.103	0.091	11,100	11,300	9,723
WI	0.324	0.294	0.278	13,434	13,384	17,233
US	0.159	0.154	0.123	1,641,462	1,575,403	1,290,855

¹ Estimates discontinued in 1997.

**Apples, Commercial: Fresh Market Utilization and Price
by State and United States, 1996-98¹**

State	Fresh Market					
	Quantity			Price per Pound ¹		
	1996	1997	1998	1996	1997	1998
	<i>Million Pounds</i>	<i>Million Pounds</i>	<i>Million Pounds</i>	<i>Dollars</i>	<i>Dollars</i>	<i>Dollars</i>
AZ	4.0	0.5	11.7	0.444	0.553	0.400
CA	350.0	375.0	350.0	0.323	0.332	0.293
CO	16.5	22.5	45.0	0.249	0.191	0.134
CT	16.0	18.0	14.0	0.350	0.360	0.395
ID	87.0	50.0	70.0	0.212	0.247	0.128
IL	39.0	57.0	26.0	0.353	0.219	0.228
IN	35.0	34.5	34.9	0.330	0.278	0.316
KY	8.5	4.9	9.0	0.324	0.270	0.284
ME	40.0	43.0	33.0	0.260	0.240	0.270
MD	11.5	30.2	20.0	0.242	0.254	0.246
MA	41.0	43.5	20.0	0.310	0.320	0.395
MI	225.0	300.0	320.0	0.170	0.150	0.130
MO	27.0	38.5	20.5	0.260	0.230	0.223
NH	26.0	28.0	14.5	0.290	0.270	0.350
NJ	27.0	22.0	22.0	0.215	0.203	0.200
NM	5.0	7.0	8.0	0.312	0.339	0.210
NY	500.0	520.0	420.0	0.177	0.176	0.158
NC	61.0	36.0	47.0	0.191	0.227	0.170
OH	75.0	47.0	52.0	0.303	0.265	0.269
OR	100.0	112.0	89.0	0.098	0.316	0.210
PA	135.0	175.0	151.0	0.198	0.227	0.223
SC	10.0	18.0	23.0	0.238	0.205	0.293
UT	33.0	34.0	26.0	0.165	0.183	0.170
VT	33.0	38.0	23.5	0.220	0.220	0.288
VA	90.0	53.0	100.0	0.150	0.204	0.189
WA	4,100.0	3,600.0	4,300.0	0.197	0.213	0.151
WV	20.0	20.0	17.0	0.191	0.187	0.159
WI	35.0	39.0	52.6	0.371	0.329	0.316
Oth Sts	56.4	47.9	40.9	0.341	0.348	0.364
US	6,206.9	5,814.5	6,360.6	0.208	0.221	0.171

¹ Equivalent packinghouse door returns for CA, NY, OR, and WA; price at first sale for other States.

**Apples, Commercial: Value of Fresh Market Production
by State and United States, 1996-98**

State	Fresh Market		
	Value of Production		
	1996	1997	1998
	<i>1,000 Dollars</i>	<i>1,000 Dollars</i>	<i>1,000 Dollars</i>
AZ	1,776	277	4,680
CA	113,050	124,500	102,550
CO	4,109	4,298	6,030
CT	5,600	6,480	5,530
ID	18,444	12,350	8,960
IL	13,767	12,483	5,928
IN	11,550	9,591	11,028
KY	2,754	1,323	2,556
ME	10,400	10,320	8,910
MD	2,783	7,671	4,920
MA	12,710	13,920	7,900
MI	38,250	45,000	41,600
MO	7,020	8,855	4,572
NH	7,540	7,560	5,075
NJ	5,805	4,466	4,400
NM	1,560	2,373	1,680
NY	88,500	91,520	66,360
NC	11,651	8,172	7,990
OH	22,725	12,455	13,988
OR	9,800	35,392	18,690
PA	26,730	39,725	33,673
SC	2,380	3,690	6,739
UT	5,445	6,222	4,420
VT	7,260	8,360	6,768
VA	13,500	10,812	18,900
WA	807,700	766,800	649,300
WV	3,820	3,740	2,703
WI	12,985	12,831	16,622
Oth Sts	19,244	16,680	14,878
US	1,288,858	1,287,866	1,087,350

**Apples, Commercial: Processed Utilization and Price
by State and United States, 1996-98**

State	Processed					
	Quantity			Price per Ton		
	1996	1997	1998	1996	1997	1998
<i>Million Pounds</i>	<i>Million Pounds</i>	<i>Million Pounds</i>	<i>Dollars</i>	<i>Dollars</i>	<i>Dollars</i>	
AZ	96.0	43.6	33.3	222.00	204.00	117.00
CA	600.0	587.0	465.0	150.00	130.00	85.00
CO	7.5	11.5	14.0	194.00	146.00	143.00
CT	4.0	5.0	3.0	440.00	276.00	260.00
ID	103.0	60.0	60.0	144.00	98.00	32.00
IL	12.0	10.0	9.0	168.00	124.00	127.00
IN	11.0	13.5	15.1	142.00	130.00	160.00
KY	1.1	0.9		510.00	420.00	
ME	23.0	19.0	10.0	204.00	176.00	194.00
MD	16.0	14.3	14.0	190.00	174.00	164.00
MA	12.0	15.0	7.0	200.00	160.00	208.00
MI	475.0	700.0	610.0	210.00	152.00	130.00
MO	5.0	12.0	8.5	168.00	116.00	100.00
NH	12.0	12.0	4.5	160.00	140.00	130.00
NJ	31.0	33.0	32.0	192.00	170.00	138.00
NY	530.0	600.0	540.0	190.00	166.00	160.00
NC	139.0	114.0	88.0	178.00	146.00	158.00
OH	15.0	13.0	23.0	166.00	126.00	115.00
OR	56.0	48.0	54.0	158.00	110.00	57.00
PA	256.0	350.0	237.0	184.00	172.00	172.00
SC	18.0	38.0	19.0	166.00	166.00	162.00
UT	11.0	7.0	5.0	98.00	150.00	24.00
VT	11.0	11.0	10.0	170.00	146.00	134.00
VA	170.0	209.0	169.0	196.00	162.00	149.00
WA	1,400.0	1,400.0	1,600.0	150.00	78.00	43.00
WV	80.0	90.0	90.0	182.00	168.00	155.00
WI	6.5	6.5	9.4	138.00	170.00	130.00
Oth Sts	22.0	16.5	9.6	205.00	159.00	161.00
US	4,123.1	4,439.8	4,139.4	171.00	130.00	98.00

**Apples, Commercial: Value of Processed Production
by State and United States, 1996-98**

State	Processed		
	Value of Production		
	1996	1997	1998
	<i>1,000 Dollars</i>	<i>1,000 Dollars</i>	<i>1,000 Dollars</i>
AZ	10,656	4,447	1,965
CA	45,000	38,155	19,995
CO	728	840	1,008
CT	880	690	390
ID	7,416	2,940	960
IL	1,008	620	576
IN	781	878	1,208
KY	281	189	
ME	2,346	1,672	970
MD	1,520	1,244	1,148
MA	1,200	1,200	728
MI	49,875	53,200	39,650
MO	420	696	425
NH	960	840	293
NJ	2,976	2,805	2,208
NY	50,350	49,800	43,200
NC	12,371	8,322	6,952
OH	1,245	819	1,334
OR	4,424	2,640	1,566
PA	23,552	30,100	20,382
SC	1,494	3,154	1,539
UT	539	525	60
VT	935	803	670
VA	16,660	16,929	12,675
WA	105,000	54,600	35,200
WV	7,280	7,560	7,020
WI	449	553	611
Oth Sts	2,258	1,316	772
US	352,604	287,537	203,505

**Apples, Commercial: Processed Utilization, Use, and Price
by State and United States, 1996-98**

Use and State	Processed Utilization					
	Quantity			Price per Ton		
	1996	1997	1998	1996	1997	1998
	<i>Million Pounds</i>	<i>Million Pounds</i>	<i>Million Pounds</i>	<i>Dollars</i>	<i>Dollars</i>	<i>Dollars</i>
Canned						
CA	97.0	75.0	15.0	184.00	144.00	144.00
MD	13.2			190.00		
MI	200.0	265.0	230.0	220.00	180.00	160.00
NY	300.0	335.0	292.0	212.00	186.00	192.00
NC	71.0	69.0	58.0	196.00	178.00	190.00
PA	202.0	275.0	181.0	196.00	190.00	192.00
VA	110.0	143.0	109.0	213.00	180.00	180.00
WA	190.0	190.0	185.0	172.00	100.00	86.00
WV	45.0			194.00		
Oth Sts	66.0	146.8	116.1	197.00	184.00	174.00
US	1,294.2	1,498.8	1,186.1	200.00	172.00	166.00
Juice & Cider						
CA	418.0	362.0	200.0	137.00	106.00	70.00
KY	1.1	0.9		510.00	420.00	
MD	2.4			190.00		
MI	140.0	270.0	240.0	160.00	104.00	75.00
NY	182.0	160.0	170.0	146.00	106.00	92.00
NC	66.0	42.0	23.0	157.00	96.00	78.00
OH	13.0	12.0	21.0	158.00	124.00	108.00
OR	35.0	30.0	35.0	144.00	66.00	34.00
PA	50.0	65.0	47.0	142.00	105.00	114.00
VA	54.0	56.0	53.0	153.00	118.00	90.00
WA	920.0	930.0	1,135.0	137.00	66.00	30.00
WV	22.0			142.00		
Oth Sts	279.7	217.2	199.5	185.00	146.00	98.00
US	2,183.2	2,145.1	2,123.5	147.00	92.00	55.00

--continued

**Apples, Commercial: Processed Utilization, Use, and Price
by State and United States, 1996-98 (continued)**

Use and State	Processed Utilization ¹					
	Quantity			Price per Ton		
	1996	1997	1998	1996	1997	1998
	<i>Million Pounds</i>	<i>Million Pounds</i>	<i>Million Pounds</i>	<i>Dollars</i>	<i>Dollars</i>	<i>Dollars</i>
Frozen						
MI	125.0	160.0	130.0	250.00	192.00	180.00
NY	35.0	88.0	68.0	226.00	202.00	200.00
Oth Sts	107.8	101.0	225.4	198.00	161.00	84.00
US	267.8	349.0	423.4	226.00	185.00	132.00
Dried						
US	316.6	267.0	316.3	172.00	107.00	68.00
Other ²						
MI	10.0	5.0	10.0	170.00	120.00	100.00
NY		10.0	4.0		104.00	80.00
Oth Sts	51.3	164.9	76.1	177.00	162.00	145.00
US	61.3	179.9	90.1	178.00	158.00	146.00

¹ Missing data included in Other States to avoid disclosure of individual operations.

² Includes vinegar, wine, and fresh slices for pie making.

**Miscellaneous Fruits: Bearing Acreage, Yield, Production, and Utilization
by State and United States, 1996-98**

Crop, State, and Season	Bearing Acreage	Yield Per Acre ¹	Production		Utilization	
			Total	Utilized	Fresh	Processed
	<i>Acres</i>	<i>Tons</i>	<i>Tons</i>	<i>Tons</i>	<i>Tons</i>	<i>Tons</i>
Apricots ²						
CA						
1996	20,200	3.76	76,000	76,000	10,500	65,500
1997	20,000	6.60	132,000	122,400	20,900	101,500
1998	20,000	5.65	113,000	102,600	18,500	84,100
UT						
1996			300	290		
1997			130	130		
1998			200	180		
WA						
1996			3,000	3,000		
1997			7,100	7,100		
1998			5,100	5,100		
US						
1996	21,580	3.67	79,300	79,290	13,490	65,800
1997	21,400	6.51	139,230	129,630	26,830	102,800
1998	21,380	5.53	118,300	107,880	22,780	85,100
Avocados						
CA						
1996-97	59,900	2.79	167,000	167,000	165,000	2,000
1997-98	59,900	2.57	154,000	154,000	152,500	1,500
1998-99	59,400	2.04	121,000	121,000	119,300	1,700
FL						
1996-97	5,700	4.12	23,500	23,500	23,500	
1997-98	5,900	4.07	24,000	24,000	24,000	
1998-99	6,000	3.83	23,000	23,000	23,000	
HI						
1996-97	200	1.00	200	200	200	
1997-98	250	1.00	250	250	250	
1998-99	240	1.04	250	250	250	
US						
1996-97	65,800	2.90	190,700	190,700	188,700	2,000
1997-98	66,050	2.70	178,250	178,250	176,750	1,500
1998-99	65,640	2.20	144,250	144,250	142,550	1,700
Dates						
CA						
1996	4,680	4.91	23,000	23,000	23,000	
1997	4,800	4.38	21,000	21,000	21,000	
1998	4,900	4.53	22,200	22,200	22,200	

¹ Yield is based on total production.

² Missing data not published to avoid disclosure of individual operations.

**Miscellaneous Fruits: Price and Value by State
and United States, 1996-98 ¹**

Crop, State, and Season	Price per Ton			Value of Production		
	Fresh	Processed	All	Fresh	Processed	Total
	<i>Dollars</i>	<i>Dollars</i>	<i>Dollars</i>	<i>1,000 Dollars</i>	<i>1,000 Dollars</i>	<i>1,000 Dollars</i>
Apricots ²						
CA						
1996	1,080.00	286.00	403.00	11,340	19,323	30,663
1997	467.00	277.00	308.00	9,760	27,913	37,673
1998	533.00	262.00	311.00	9,861	22,034	31,895
UT						
1996			859.00			249
1997			492.00			64
1998			728.00			131
WA						
1996			1,420.00			4,259
1997			751.00			5,335
1998			637.00			3,248
US						
1996	1,170.00	285.00	444.00	15,801	19,370	35,171
1997	558.00	275.00	332.00	14,963	28,109	43,072
1998	578.00	260.00	327.00	13,170	22,104	35,274
Avocados						
CA						
1996-97	1,570.00	556.00	1,560.00	259,050	1,112	260,162
1997-98	1,720.00	782.00	1,710.00	262,300	1,173	263,473
1998-99	1,640.00	597.00	1,630.00	195,652	1,015	196,667
FL						
1996-97	528.00		528.00	12,408		12,408
1997-98	584.00		584.00	14,016		14,016
1998-99	716.00		716.00	16,468		16,468
HI						
1996-97	1,070.00		1,070.00	214		214
1997-98	1,060.00		1,060.00	265		265
1998-99	1,040.00		1,040.00	260		260
US						
1996-97	1,440.00	556.00	1,430.00	271,672	1,112	272,784
1997-98	1,560.00	782.00	1,560.00	276,581	1,173	277,754
1998-99	1,490.00	597.00	1,480.00	212,380	1,015	213,395
Dates						
CA						
1996	1,090.00		1,090.00	25,070		25,070
1997	1,100.00		1,100.00	23,100		23,100
1998	1,130.00		1,130.00	25,086		25,086

¹ Missing data not published to avoid disclosure of individual operations.

² Apricot processed price excludes dried. Processing value includes dried.

**Miscellaneous Fruits: Bearing Acreage, Yield, Production, and Utilization
by State and United States, 1996-98**

Crop, State, and Season	Bearing Acreage	Yield Per Acre ¹	Production		Utilization	
			Total	Utilized	Fresh	Processed
	<i>Acres</i>	<i>Tons</i>	<i>Tons</i>	<i>Tons</i>	<i>Tons</i>	<i>Tons</i>
Figs ²						
CA						
1996	15,400	2.95	45,500	45,500	2,000	43,500
1997	16,400	3.51	57,500	57,500	2,000	55,500
1998	16,300	3.11	50,700	50,700	1,800	48,900
Kiwifruit						
CA						
1996	5,700	5.53	31,500	28,000	26,100	1,900
1997	5,300	6.60	35,000	31,800	31,300	500
1998	5,300	6.91	36,600	33,000	32,000	1,000
Nectarines						
CA						
1996	35,000	7.06	247,000	247,000	239,800	7,200
1997	36,000	7.33	264,000	264,000	258,500	5,500
1998	35,500	6.48	230,000	230,000	213,600	16,400
Olives						
CA						
1996	33,700	4.93	166,000	166,000	500	165,500
1997	35,300	2.95	104,000	104,000	500	103,500
1998	35,300	2.55	90,000	90,000	500	89,500
Plums ³						
CA						
1996	42,600	5.35	228,000	228,000		
1997	42,000	5.86	246,000	246,000		
1998	42,000	4.45	187,000	187,000		

¹ Yield is based on total production.

² Small quantities of canned figs are included in fresh to avoid disclosure of individual operations.

³ Missing data not published to avoid disclosure of individual operations.

**Miscellaneous Fruits: Price and Value by State
and United States, 1996-98 ¹**

Crop, State, and Season	Price per Ton			Value of Production		
	Fresh	Processed	All	Fresh	Processed	Total
	<i>Dollars</i>	<i>Dollars</i>	<i>Dollars</i>	<i>1,000 Dollars</i>	<i>1,000 Dollars</i>	<i>1,000 Dollars</i>
Figs						
CA						
1996			283.00			12,894
1997			265.00			15,209
1998			248.00			12,579
Kiwifruit						
CA						
1996			470.00			13,157
1997			518.00			16,483
1998			744.00			24,544
Nectarines						
CA						
1996			474.00			116,977
1997			375.00			98,895
1998			472.00			108,502
Olives						
CA						
1996	500.00	617.00	617.00	250	102,114	102,364
1997	500.00	643.00	642.00	250	66,551	66,801
1998	500.00	459.00	459.00	250	41,081	41,331
Plums						
CA						
1996			420.00			95,831
1997			312.00			76,825
1998			529.00			98,845

¹ Missing data not published to avoid disclosure of individual operations.

**Miscellaneous Fruits: Bearing Acreage, Yield, Production, and Utilization
by State and United States, 1996-98¹**

Crop, State, and Season	Bearing Acreage	Yield Per Acre ²	Production		Utilization	
			Total	Utilized	Fresh	Processed
	<i>Acres</i>	<i>Tons</i>	<i>Tons</i>	<i>Tons</i>	<i>Tons</i>	<i>Tons</i>
Prunes & Plums						
ID						
1996			5,000	4,700		
1997			3,000	2,700		
1998			4,500	4,300		
MI						
1996	1,300	1.92	2,500	2,500	1,250	1,250
1997	1,150	3.48	4,000	4,000	1,500	2,500
1998	1,100	3.27	3,600	3,600	1,200	2,400
OR						
1996	2,300	2.61	6,000	5,500		
1997	2,200	5.45	12,000	10,500		
1998	2,000	5.25	10,500	9,900		
WA						
1996			6,000	6,000		
1997			6,500	6,500		
1998			7,000	7,000		
4-State Total						
1996	5,190	3.76	19,500	18,700	10,650	8,050
1997	4,720	5.40	25,500	23,700	10,500	13,200
1998	4,470	5.73	25,600	24,800	11,750	13,050
Prunes (Dried Basis)						
CA						
1996	85,000	2.62	223,000	223,000		223,000
1997	82,000	2.61	214,000	205,000		205,000
1998	83,000	1.30	108,000	103,000		103,000

¹ Missing data not published to avoid disclosure of individual operations.

² Yield is based on total production.

**Miscellaneous Fruits: Price and Value by State
and United States, 1996-98 ¹**

Crop, State, and Season	Price per Ton			Value of Production		
	Fresh <i>Dollars</i>	Processed <i>Dollars</i>	All <i>Dollars</i>	Fresh <i>1,000 Dollars</i>	Processed <i>1,000 Dollars</i>	Total <i>1,000 Dollars</i>
Prunes & Plums						
ID						
1996			596.00			2,802
1997			517.00			1,395
1998			553.00			2,377
MI						
1996	360.00	310.00	335.00	450	388	838
1997	460.00	280.00	348.00	690	700	1,390
1998	390.00	255.00	300.00	468	612	1,080
OR						
1996			354.00			1,947
1997			238.00			2,503
1998			274.00			2,714
WA						
1996			448.00			2,685
1997			184.00			1,193
1998			219.00			1,536
4-State Total						
1996	575.00	267.00	442.00	6,126	2,146	8,272
1997	448.00	134.00	273.00	4,709	1,772	6,481
1998	476.00	162.00	311.00	5,594	2,113	7,707
Prunes (Dried Basis)						
CA						
1996		839.00	839.00		187,097	187,097
1997		798.00	798.00		163,590	163,590
1998		836.00	836.00		86,108	86,108

¹ Missing data not published to avoid disclosure of individual operations.

**Miscellaneous Fruits: Processed Utilization, Use, and Price
by State and United States, 1996-98**

Crop, Use, and State	Processed Utilization					
	Quantity			Price per Ton		
	1996	1997	1998	1996	1997	1998
	<i>Tons</i>	<i>Tons</i>	<i>Tons</i>	<i>Dollars</i>	<i>Dollars</i>	<i>Dollars</i>
Apricots						
Canned						
CA	20,000	46,700	40,700	320.00	320.00	330.00
Juice						
CA	21,500	27,700	24,000	245.00	190.00	125.00
Frozen						
CA	9,000	15,100	10,400	310.00	300.00	315.00
Dried (Fresh Basis)						
CA	15,000	12,000	9,000	325.00	262.00	258.00
Figs						
Dried (Fresh Basis)						
CA	43,500	55,500	48,900	258.00	233.00	220.00
Olives						
Canned						
CA	123,000	82,200	64,200	745.00	760.00	590.00
Crushed for Oil						
CA	7,000	3,600	4,100	11.00	11.00	11.00
Limited						
CA	29,000	10,200	12,800	355.00	386.00	240.00
Undersized						
CA	6,500	7,500	8,400	11.00	11.00	11.00
Prunes & Plums						
Canned						
MI	900	2,100	1,550	300.00	267.00	225.00
Oth Sts	4,800	6,600	5,700	293.00	111.00	126.00
4-State Total	5,700	8,700	7,250	294.00	149.00	148.00
Frozen						
4-State Total	450	1,700	1,650	311.00	159.00	230.00
Dried & Other						
4-State Total	1,900	2,800	4,150	175.00	76.00	160.00

California Dry Fruits: Production, Use, and Price, 1996-98

Crop	Quantity			Price per Ton		
	1996	1997	1998	1996	1997	1998
	<i>Tons</i>	<i>Tons</i>	<i>Tons</i>	<i>Dollars</i>	<i>Dollars</i>	<i>Dollars</i>
Fresh Basis						
Apricots	15,000	12,000	9,000	325.00	262.00	258.00
Figs	43,500	55,500	48,900	258.00	233.00	220.00
Grapes						
Raisin	1,308,000	1,778,000	1,385,000	255.00	219.00	240.00
Table	10,000	18,000	20,000	210.00	220.00	180.00
Peaches						
Freestone	16,350	17,050	12,500	78.00	68.00	67.40
Pears						
Bartlett	4,900	5,400	7,600	184.00	151.00	217.00
Prunes	704,000	627,300	329,600	262.00	261.00	261.00
Dried Basis						
Apricots	2,170	1,740	1,250	2,240.00	1,810.00	1,860.00
Figs						
Standard	13,100	15,900	13,100	848.00	801.00	808.00
Sub-Std.	1,400	2,600	3,200	80.00	78.00	60.00
Grapes						
Raisin ^{1 2}	311,500	428,500	277,000	1,070.00	908.00	1,200.00
Table	2,400	4,300	4,000	880.00	914.00	900.00
Peaches						
Freestone	1,700	1,894	1,550	726.00	612.00	550.00
Pears						
Bartlett	700	800	1,100	1,290.00	1,020.00	1,500.00
Prunes	223,000	205,000	103,000	839.00	798.00	836.00

¹ Includes substandard raisins diverted to other uses.

² Dried basis 1 ton of raisins equivalent to 4.20 tons for 1996, 4.15 tons for 1997, and 5.00 tons for 1998.

**Strawberries: Area Planted and Harvested, Yield, and Production
by Season, State, and United States, 1996-98**

Season and State	Area Planted			Area Harvested		
	1996	1997	1998	1996	1997	1998
	<i>Acres</i>	<i>Acres</i>	<i>Acres</i>	<i>Acres</i>	<i>Acres</i>	<i>Acres</i>
Winter						
FL	6,000	6,100	6,200	6,000	6,100	6,200
Spring						
AR	200	220	210	170	210	180
CA	25,200	22,600	24,200	25,200	22,600	24,200
LA	750	450	400	750	450	400
MI	1,700	1,600	1,500	1,500	1,500	1,400
NJ	450	500	500	450	450	450
NY	2,000	1,700	1,700	1,900	1,600	1,600
NC	2,000	1,700	1,700	1,800	1,500	1,600
OH	1,300	1,200	1,200	1,000	950	1,000
OR	6,100	5,500	4,500	5,200	5,000	4,400
PA	1,300	1,400	1,200	1,300	1,400	1,200
WA	1,300	1,400	1,500	1,300	1,400	1,500
WI	1,300	1,300	1,200	1,100	1,100	1,100
Total	43,600	39,570	39,810	41,670	38,160	39,030
US	49,600	45,670	46,010	47,670	44,260	45,230
	Yield per Acre			Production ¹		
	1996	1997	1998	1996	1997	1998
	<i>Cwt</i>	<i>Cwt</i>	<i>Cwt</i>	<i>1,000 Cwt</i>	<i>1,000 Cwt</i>	<i>1,000 Cwt</i>
Winter						
FL	260	290	260	1,560	1,769	1,612
Spring						
AR	21	71	45	4	15	8
CA	540	590	580	13,608	13,334	14,036
LA	75	110	150	56	50	60
MI	40	65	68	60	98	95
NJ	35	44	44	16	20	20
NY	39	42	38	74	67	61
NC	90	120	125	162	180	200
OH	36	36	52	36	34	52
OR	92	100	115	478	500	506
PA	43	46	42	56	64	50
WA	81	65	80	105	91	120
WI	40	51	55	44	56	61
Total	353	380	391	14,699	14,509	15,269
US	341	368	373	16,259	16,278	16,881

¹ Excludes the following quantities not harvested or not marketed because of economic conditions: 1997 - WA, 10,000 cwt, 1998 - WA, 5,000 cwt.

**Strawberries: Price and Value by Season,
State, and United States, 1996-98**

Season and State	Price per Cwt			Value of Production		
	1996	1997	1998	1996	1997	1998
	<i>Dollars</i>	<i>Dollars</i>	<i>Dollars</i>	<i>1,000 Dollars</i>	<i>1,000 Dollars</i>	<i>1,000 Dollars</i>
Winter						
FL	72.20	82.60	100.00	112,632	146,119	161,200
Spring						
AR	75.00	85.00	65.00	300	1,275	520
CA	43.00	51.50	55.80	584,860	686,418	782,923
LA	61.00	60.00	70.00	3,416	3,000	4,200
MI	75.20	75.60	74.60	4,512	7,411	7,089
NJ	68.80	83.30	44.20	1,101	1,666	884
NY	120.00	101.00	115.00	8,880	6,767	7,015
NC	67.00	70.00	75.00	10,854	12,600	15,000
OH	89.00	93.00	100.00	3,204	3,162	5,200
OR	47.80	39.50	51.00	22,835	19,750	25,820
PA	97.00	77.30	109.00	5,432	4,950	5,450
WA	62.90	49.70	50.30	6,605	4,520	6,040
WI	98.00	102.00	108.00	4,312	5,712	6,588
Total	44.70	52.20	56.80	656,311	757,231	866,729
US	47.30	55.50	60.90	768,943	903,350	1,027,929

**Strawberries: Fresh Market and Processed Production
by Season, State, and United States, 1996-98**

Utilization, Season, and State	Production		
	1996	1997	1998
	<i>1,000 Cwt</i>	<i>1,000 Cwt</i>	<i>1,000 Cwt</i>
Fresh			
Winter			
FL	1,560	1,769	1,612
Spring			
AR	4	15	8
CA	9,989	9,618	9,386
LA	56	50	60
MI	56	87	82
NJ	16	20	20
NY	74	67	61
NC	162	180	200
OH	36	34	52
OR	48	35	26
PA	56	64	50
WA	25	23	20
WI	44	56	61
Total	10,566	10,249	10,026
US	12,126	12,018	11,638
Processed			
Spring			
CA	3,619	3,716	4,650
MI	4	11	13
OR	430	465	480
WA	80	68	100
US	4,133	4,260	5,243

**Strawberries: Fresh Market and Processed Price and Value
by Season, State, and United States, 1996-98**

Utilization, Season and State	Price per Cwt			Value of Production		
	1996	1997	1998	1996	1997	1998
	<i>Dollars</i>	<i>Dollars</i>	<i>Dollars</i>	<i>1,000 Dollars</i>	<i>1,000 Dollars</i>	<i>1,000 Dollars</i>
Fresh						
Winter						
FL	72.20	82.60	100.00	112,632	146,119	161,200
Spring						
AR	75.00	85.00	65.00	300	1,275	520
CA	52.50	61.40	68.70	524,423	590,545	644,818
LA	61.00	60.00	70.00	3,416	3,000	4,200
MI	78.00	80.00	79.00	4,368	6,960	6,478
NJ	68.80	83.30	44.20	1,101	1,666	884
NY	120.00	101.00	115.00	8,880	6,767	7,015
NC	67.00	70.00	75.00	10,854	12,600	15,000
OH	89.00	93.00	100.00	3,204	3,162	5,200
OR	75.30	86.00	70.00	3,614	3,010	1,820
PA	97.00	77.30	109.00	5,432	4,950	5,450
WA	85.00	96.00	92.00	2,125	2,208	1,840
WI	98.00	102.00	108.00	4,312	5,712	6,588
Total	54.10	62.60	69.80	572,029	641,855	699,813
US	56.50	65.60	74.00	684,661	787,974	861,013
Processed						
Spring						
CA	16.70	25.80	29.70	60,437	95,873	138,105
MI	36.00	41.00	47.00	144	451	611
OR	44.70	36.00	50.00	19,221	16,740	24,000
WA	56.00	34.00	42.00	4,480	2,312	4,200
US	20.40	27.10	31.80	84,282	115,376	166,916

**Berries: Harvested Acreage, Yield, Production, and Utilization
by Crop, State, and United States, 1996-98**

Crop, State, and Year	Area Harvested	Yield Per Acre ¹	Production		Utilization	
			Total	Utilized	Fresh	Processed
	<i>Acres</i>	<i>Pounds</i>	<i>1,000 Pounds</i>	<i>1,000 Pounds</i>	<i>1,000 Pounds</i>	<i>1,000 Pounds</i>
Cultivated Blueberries						
AL						
1996	300	1,300	390	390	390	
1997	470	1,400	1,020	660	650	10
1998	310	1,300	861	403	387	16
AR						
1996	600	1,670	1,500	1,000	800	200
1997	550	3,000	2,050	1,650	1,350	300
1998	500	1,800	1,110	900	800	100
FL						
1996	1,300	1,770	2,700	2,300	1,800	500
1997	1,200	1,670	2,400	2,000	1,600	400
1998	1,200	1,670	2,400	2,000	1,600	400
GA						
1996	3,500	1,570	6,000	5,500	2,000	3,500
1997	4,000	3,250	14,000	13,000	4,000	9,000
1998	4,400	1,700	9,000	7,500	4,000	3,500
IN						
1996	800	3,500	2,900	2,800	1,700	1,100
1997	800	4,380	3,600	3,500	2,200	1,300
1998	790	3,920	3,200	3,100	2,000	1,100
MI						
1996	16,500	2,550	42,000	42,000	15,000	27,000
1997	16,500	4,360	72,000	72,000	19,000	53,000
1998	16,400	2,990	49,000	49,000	16,000	33,000
NJ						
1996	7,500	4,530	35,000	34,000	23,000	11,000
1997	7,400	4,590	35,000	34,000	24,000	10,000
1998	7,500	4,800	37,000	36,000	28,000	8,000
NY						
1996	650	1,850	1,300	1,200	1,100	100
1997	700	2,140	1,600	1,500	1,400	100
1998	700	2,290	1,700	1,600	1,400	200
NC						
1996	3,200	3,440	12,000	11,000	9,000	2,000
1997	3,250	2,650	8,600	8,600	6,600	2,000
1998	3,000	4,730	15,000	14,200	10,800	3,400
OR						
1996	2,100	8,100	17,000	17,000	6,000	11,000
1997	2,500	8,400	21,000	21,000	6,500	14,500
1998	2,500	9,200	23,000	23,000	8,000	15,000
WA						
1996	1,300	6,300	8,690	8,190	1,590	6,600
1997	1,300	6,700	8,710	8,710	2,000	6,710
1998	1,500	7,000	10,700	10,500	2,000	8,500
US						
1996	37,750	3,320	129,480	125,380	62,380	63,000
1997	38,670	4,310	169,980	166,620	69,300	97,320
1998	38,800	3,820	152,971	148,203	74,987	73,216

¹ Yield is based on utilized production.

**Berries: Price and Value by Crop, State,
and United States, 1996-98**

Crop, State and Year	Price per Pound			Value of Production		
	Fresh	Processed	All	Fresh	Processed	Total
	<i>Dollars</i>	<i>Dollars</i>	<i>Dollars</i>	<i>1,000 Dollars</i>	<i>1,000 Dollars</i>	<i>1,000 Dollars</i>
Cultivated Blueberries						
AL						
1996	0.885		0.885	345		345
1997	0.910	0.550	0.906	592	6	598
1998	1.280	0.800	1.260	495	13	508
AR						
1996	1.600	1.000	1.480	1,280	200	1,480
1997	1.070	0.670	0.998	1,445	201	1,646
1998	1.060	0.540	1.000	848	54	902
FL						
1996	2.550	0.750	2.160	4,590	375	4,965
1997	2.950	0.800	2.520	4,720	320	5,040
1998	3.750	0.600	3.120	6,000	240	6,240
GA						
1996	1.210	0.570	0.803	2,420	1,995	4,415
1997	1.140	0.530	0.718	4,560	4,770	9,330
1998	0.980	0.530	0.770	3,920	1,855	5,775
IN						
1996	0.950	0.770	0.879	1,615	847	2,462
1997	1.000	0.608	0.854	2,200	790	2,990
1998	1.050	0.572	0.880	2,100	629	2,729
MI						
1996	1.000	0.790	0.865	15,000	21,330	36,330
1997	0.988	0.590	0.695	18,772	31,270	50,042
1998 ¹	0.860	0.500	0.618	13,760	16,500	30,260
NJ						
1996	1.000	0.910	0.971	23,000	10,010	33,010
1997	1.020	0.950	0.999	24,480	9,500	33,980
1998	0.870	0.500	0.788	24,360	4,000	28,360
NY						
1996	1.040	0.850	1.020	1,144	85	1,229
1997	1.080	0.900	1.070	1,512	90	1,602
1998	1.040	0.920	1.030	1,456	184	1,640
NC						
1996	1.090	0.670	1.010	9,810	1,340	11,150
1997	1.350	0.590	1.170	8,910	1,180	10,090
1998	1.090	0.350	0.913	11,772	1,190	12,962
OR						
1996	0.925	0.655	0.750	5,550	7,205	12,755
1997	0.875	0.670	0.733	5,688	9,715	15,403
1998	0.720	0.385	0.502	5,760	5,775	11,535
WA						
1996	0.890	0.640	0.689	1,415	4,224	5,639
1997	1.670	0.660	0.892	3,340	4,429	7,769
1998	1.030	0.530	0.625	2,060	4,505	6,565
US						
1996	1.060	0.756	0.907	66,169	47,611	113,780
1997	1.100	0.640	0.831	76,219	62,271	138,490
1998	0.967	0.477	0.725	72,531	34,945	107,476

¹ 1998 revised.

**Berries: Harvested Acreage, Yield, Production, and Utilization
by Crop, State, and United States, 1996-98**

Crop, State, and Year	Area Harvested	Yield Per Acre ¹	Production		Utilization	
			Total	Utilized	Fresh	Processed
	<i>Acres</i>	<i>Pounds</i>	<i>1,000 Pounds</i>	<i>1,000 Pounds</i>	<i>1,000 Pounds</i>	<i>1,000 Pounds</i>
Cultivated Blackberries						
OR						
1996	5,030	5,710	28,700	28,700	750	27,950
1997	5,510	7,930	43,700	43,700	750	42,950
1998	5,550	7,010	38,900	38,900	600	38,300
Boysenberries						
CA ²						
1996	270	8,890	2,400	2,400		
1997	270	9,110	2,460	2,460		
1998	250	7,000	1,750	1,750		
OR						
1996	1,200	4,170	5,000	5,000	100	4,900
1997	1,350	5,260	7,100	7,100	200	6,900
1998	1,360	4,560	6,200	6,200	300	5,900
US						
1996	1,470	5,030	7,400	7,400		
1997	1,620	5,900	9,560	9,560		
1998	1,610	4,940	7,950	7,950		
Loganberries						
OR						
1996	80	3,130	250	250	125	125
1997	90	3,670	330	330	150	180
1998	70	4,000	280	280	90	190
Black Raspberries						
OR						
1996	1,150	1,650	1,900	1,900	10	1,890
1997	1,100	1,910	2,100	2,100	10	2,090
1998	1,060	2,450	2,600	2,600	20	2,580
Red Raspberries						
OR						
1996	3,700	3,920	14,500	14,500	800	13,700
1997	3,600	4,860	17,500	17,500	500	17,000
1998	3,300	4,300	14,200	14,200	800	13,400
WA						
1996	6,300	6,500	40,950	40,950	1,950	39,000
1997	8,500	7,000	66,300	59,500	3,000	56,500
1998	9,000	6,700	65,300	60,300	2,300	58,000
US						
1996	10,000	5,550	55,450	55,450	2,750	52,700
1997	12,100	6,360	83,800	77,000	3,500	73,500
1998	12,300	6,060	79,500	74,500	3,100	71,400
All Raspberries						
CA ²						
1996	1,800	8,280	14,900	14,900		
1997	1,700	8,530	14,500	14,500		
1998	1,700	8,710	14,800	14,800		

¹ Yield is based on utilized production.

² No breakdown of utilization available.

**Berries: Price and Value by Crop, State,
and United States, 1996-98**

Crop, State, and Year	Price per Pound			Value of Production		
	Fresh	Processed	All	Fresh	Processed	Total
	<i>Dollars</i>	<i>Dollars</i>	<i>Dollars</i>	<i>1,000 Dollars</i>	<i>1,000 Dollars</i>	<i>1,000 Dollars</i>
Cultivated Blackberries						
OR ¹						
1996	1.290	0.875	0.886	971	24,462	25,433
1997	1.100	0.390	0.403	825	16,765	17,590
1998	1.210	0.436	0.448	726	16,699	17,425
Boysenberries						
CA ²						
1996			0.937			2,248
1997			0.667			1,642
1998			0.792			1,386
OR						
1996	1.460	1.030	1.040	146	5,047	5,193
1997	1.190	0.530	0.549	238	3,657	3,895
1998	0.835	0.430	0.450	251	2,537	2,788
US						
1996			1.010			7,441
1997			0.579			5,537
1998			0.525			4,174
Loganberries						
OR						
1996	1.220	0.755	0.988	153	94	247
1997	1.700	0.770	1.190	255	139	394
1998	1.120	0.740	0.864	101	141	242
Black Raspberries						
OR						
1996	1.910	1.670	1.670	19	3,156	3,175
1997	2.880	1.900	1.900	29	3,971	4,000
1998	2.370	2.100	2.100	47	5,418	5,465
Red Raspberries						
OR						
1996	1.810	0.794	0.850	1,448	10,878	12,326
1997	1.440	0.525	0.551	720	8,925	9,645
1998	1.430	0.395	0.453	1,144	5,293	6,437
WA						
1996	1.220	0.720	0.744	2,379	28,080	30,459
1997	1.430	0.420	0.471	4,290	23,730	28,020
1998	1.280	0.340	0.376	2,944	19,720	22,664
US						
1996	1.390	0.739	0.772	3,827	38,958	42,785
1997	1.430	0.444	0.489	5,010	32,655	37,665
1998	1.320	0.350	0.391	4,088	25,013	29,101
All Raspberries						
CA ²						
1996			1.710			25,520
1997			1.390			20,225
1998			1.920			28,470

¹ Value of production is equal to the sum of unpublished varietal values.

² No breakdown of utilization available.

**Sweet Cherries: Bearing Acreage, Yield, Production, and Utilization
by State and United States, 1996-98¹**

State and Year	Bearing Acreage	Yield Per Acre ²	Production		Utilization	
			Total	Utilized	Fresh	Processed
	<i>Acres</i>	<i>Tons</i>	<i>Tons</i>	<i>Tons</i>	<i>Tons</i>	<i>Tons</i>
CA						
1996	16,500	1.49	24,600	24,600	16,000	8,600
1997	17,000	2.89	49,200	49,200	31,600	17,600
1998	17,500	0.88	15,400	15,400	7,700	7,700
ID						
1996			2,200	2,150		
1997			1,600	1,600		
1998			2,200	2,070		
MI						
1996	7,700	2.86	22,000	22,000	500	21,500
1997	7,800	3.46	27,000	27,000	500	26,500
1998	7,900	4.43	35,000	33,000	700	32,300
MT						
1996			700	630		
1997			1,100	870		
1998			2,050	1,890		
NY						
1996	500	1.40	700	600		
1997	750	0.87	650	620		
1998	750	0.93	700	650		
OR						
1996	10,900	2.94	32,000	32,000	11,000	21,000
1997	11,000	4.55	50,000	50,000	15,000	35,000
1998	11,000	5.00	55,000	54,500	25,000	29,500
PA						
1996			600	520	520	
1997			500	500	500	
1998			550	400	400	
UT						
1996	630	3.65	2,300	2,200	1,300	900
1997	600	1.20	720	700	420	280
1998	600	4.67	2,800	2,700	800	1,900
WA						
1996	17,200	4.01	69,000	67,000	49,000	18,000
1997	18,000	5.28	95,000	93,000	65,000	28,000
1998	18,000	5.33	96,000	96,000	71,000	25,000
US						
1996	54,780	2.81	154,100	151,700	80,670	71,030
1997	56,640	3.99	225,770	223,490	115,440	108,050
1998	57,290	3.66	209,700	206,610	109,160	97,450

¹ Missing data not published to avoid disclosure of individual operations.

² Yield is based on total production.

**Sweet Cherries: Price and Value by State
and United States, 1996-98 ¹**

State and Year	Price per Ton			Value of Production		
	Fresh	Processed	All	Fresh	Processed	All
	<i>Dollars</i>	<i>Dollars</i>	<i>Dollars</i>	<i>1,000 Dollars</i>	<i>1,000 Dollars</i>	<i>1,000 Dollars</i>
CA						
1996	2,540.00	557.00	1,850.00	40,640	4,790	45,430
1997	1,570.00	782.00	1,290.00	49,612	13,763	63,375
1998	2,330.00	784.00	1,560.00	17,941	6,037	23,978
ID						
1996			1,250.00			2,681
1997			1,290.00			2,063
1998			1,070.00			2,207
MI						
1996	1,500.00	691.00	709.00	750	14,857	15,607
1997	1,600.00	724.00	740.00	800	19,186	19,986
1998	1,400.00	544.00	562.00	980	17,571	18,551
MT						
1996			1,420.00			893
1997			954.00			830
1998			1,080.00			2,040
NY						
1996			1,420.00			854
1997			1,720.00			1,069
1998			2,070.00			1,346
OR						
1996	1,590.00	832.00	1,090.00	17,490	17,472	34,962
1997	1,710.00	886.00	1,130.00	25,650	31,010	56,660
1998	904.00	827.00	862.00	22,600	24,397	46,997
PA						
1996	2,240.00		2,240.00	1,165		1,165
1997	2,380.00		2,380.00	1,190		1,190
1998	2,320.00		2,320.00	928		928
UT						
1996	1,500.00	600.00	1,130.00	1,950	540	2,490
1997	1,100.00	650.00	920.00	462	182	644
1998	940.00	580.00	687.00	752	1,102	1,854
WA						
1996	2,150.00	755.00	1,780.00	105,350	13,590	118,940
1997	1,730.00	723.00	1,430.00	112,450	20,244	132,694
1998	1,600.00	565.00	1,330.00	113,600	14,125	127,725
US						
1996	2,120.00	730.00	1,470.00	171,151	51,871	223,022
1997	1,680.00	784.00	1,250.00	193,805	84,706	278,511
1998	1,480.00	655.00	1,090.00	161,769	63,857	225,626

¹ Missing data not published to avoid disclosure of individual operations.

**Tart Cherries: Bearing Acreage, Yield, Production, and Utilization
by State and United States, 1996-98¹**

State and Year	Bearing Acreage	Yield Per Acre ²	Production		Utilization	
			Total	Utilized	Fresh	Processed
	<i>Acres</i>	<i>Pounds</i>	<i>Million Pounds</i>	<i>Million Pounds</i>	<i>Million Pounds</i>	<i>Million Pounds</i>
CO						
1996			1.0	0.9		
1997			0.7	0.6		
1998			1.3	1.2		
MI						
1996	29,100	6,700	195.0	195.0	1.0	194.0
1997	28,400	7,920	225.0	221.0	1.0	220.0
1998	28,400	9,260	263.0	229.0	1.0	228.0
NY						
1996	3,500	5,430	19.0	14.2	0.2	14.0
1997	2,600	5,580	14.5	13.2	0.2	13.0
1998	2,600	5,380	14.0	12.2	0.2	12.0
OR						
1996	1,400	1,790	2.5	2.5		
1997	1,300	2,850	3.7	3.4		
1998	1,300	2,150	2.8	2.7		
PA						
1996	1,200	6,250	7.5	7.5		
1997	1,200	5,420	6.5	6.5		
1998	1,200	3,500	4.2	4.2		
UT						
1996	3,000	8,830	26.5	20.5		20.5
1997	2,800	6,250	17.5	14.0		14.0
1998	2,800	11,800	33.0	27.0		27.0
WA						
1996			14.2	14.2		
1997			13.5	13.5		
1998			14.0	14.0		
WI						
1996	2,700	2,260	6.1	5.3	0.2	5.1
1997	2,400	4,790	11.5	11.1	0.4	10.7
1998	2,400	6,130	14.7	14.1	0.1	14.0
US						
1996	42,550	6,390	271.8	260.1	2.5	257.6
1997	40,330	7,260	292.9	283.3	2.6	280.7
1998	40,320	8,610	347.0	304.4	2.3	302.1

¹ Missing data not published to avoid disclosure of individual operations.

² Yield is based on total production.

**Tart Cherries: Price and Value by State
and United States, 1996-98¹**

State and Year	Price per Pound			Value of Production		
	Fresh	Processed	All	Fresh	Processed	All
	<i>Dollars</i>	<i>Dollars</i>	<i>Dollars</i>	<i>1,000 Dollars</i>	<i>1,000 Dollars</i>	<i>1,000 Dollars</i>
CO						
1996			0.473			426
1997			0.560			336
1998			0.448			538
MI						
1996	0.550	0.158	0.160	550	30,652	31,202
1997	0.500	0.154	0.156	500	33,880	34,380
1998	0.470	0.139	0.140	470	31,692	32,162
NY						
1996	0.760	0.135	0.144	152	1,890	2,042
1997	1.030	0.160	0.173	206	2,080	2,286
1998	0.980	0.167	0.180	196	2,004	2,200
OR						
1996			0.206			514
1997			0.210			714
1998			0.127			344
PA						
1996			0.227			1,699
1997			0.258			1,679
1998			0.190			800
UT						
1996		0.127	0.127		2,604	2,604
1997		0.160	0.160		2,240	2,240
1998		0.160	0.160		4,320	4,320
WA						
1996			0.163			2,315
1997			0.100			1,350
1998			0.120			1,680
WI						
1996	0.390	0.170	0.178	78	867	945
1997	0.400	0.165	0.174	160	1,766	1,926
1998	0.320	0.100	0.102	32	1,400	1,432
US						
1996	0.481	0.157	0.161	1,203	40,544	41,747
1997	0.563	0.155	0.159	1,465	43,446	44,911
1998	0.494	0.140	0.143	1,136	42,340	43,476

¹ Missing data not published to avoid disclosure of individual operations.

**Sweet and Tart Cherries: Processed Utilization, Use,
and Price by State and United States, 1996-98**

Crop, Use, and State	Processed Utilization					
	Quantity			Price per Unit		
	1996	1997	1998	1996	1997	1998
	<i>Tons</i>	<i>Tons</i>	<i>Tons</i>	<i>Dollars per Ton</i>	<i>Dollars per Ton</i>	<i>Dollars per Ton</i>
Sweet Cherries						
Canned						
MI	1,200	800	4,700	960.00	1,000.00	580.00
OR	3,000	4,000	4,000	706.00	858.00	1,000.00
WA	5,000	7,000	6,000	1,130.00	1,120.00	845.00
US	9,200	11,800	14,700	970.00	1,020.00	800.00
Brined						
MI	16,800	21,500	24,500	610.00	650.00	530.00
OR	15,000	28,000	25,000	896.00	892.00	800.00
WA	8,500	14,000	14,000	524.00	625.00	565.00
Oth Sts	8,660	14,150	5,750	658.00	780.00	583.00
US	48,960	77,650	69,250	691.00	756.00	639.00
Other ¹						
MI	3,500	4,200	3,100	989.00	1,050.00	598.00
OR	3,000	3,000	500	635.00	870.00	770.00
WA	4,500	7,000	5,000	774.00	520.00	230.00
Oth Sts	1,870	4,400	4,900	137.00	735.00	899.00
US	12,870	18,600	13,500	708.00	747.00	577.00
	<i>Million Pounds</i>	<i>Million Pounds</i>	<i>Million Pounds</i>	<i>Dollars per Pound</i>	<i>Dollars per Pound</i>	<i>Dollars per Pound</i>
Tart Cherries						
Canned						
MI	55.0	70.0	65.0	0.167	0.164	0.147
Oth Sts	12.4	16.3	10.3	0.197	0.198	0.173
US	67.4	86.3	75.3	0.172	0.170	0.151
Frozen						
MI	135.0	145.0	150.0	0.158	0.153	0.139
UT	19.5	13.0	27.0	0.131	0.170	0.160
Oth Sts	15.7	15.6	21.5	0.152	0.154	0.121
US	170.2	173.6	198.5	0.154	0.154	0.140
Other ²						
MI	4.0	5.0	13.0	0.045	0.042	0.091
Oth Sts	16.0	15.8	15.3	0.156	0.109	0.127
US	20.0	20.8	28.3	0.134	0.093	0.111

¹ Frozen, juice, etc.

² Juice, wine, and brined.

**Cranberries: Area Harvested, Yield, Total and Utilized Production
by State and United States, 1996-98 ¹**

Year and State	Area Harvested	Yield per Acre	Production	
			Total	Utilized
	<i>Acres</i>	<i>Barrels</i>	<i>Barrels</i>	<i>Barrels</i>
1996				
MA	14,200	121.3	1,722,000	1,722,000
NJ	3,600	129.7	467,000	467,000
OR	1,800	173.3	312,000	312,000
WA	1,500	120.0	180,000	180,000
WI	12,900	154.3	1,990,000	1,990,000
US	34,000	137.4	4,671,000	4,671,000
1997				
MA	14,600	143.8	2,100,000	2,100,000
NJ	3,900	149.2	582,000	582,000
OR	2,000	175.0	350,000	350,000
WA	1,500	110.0	165,000	165,000
WI	13,700	167.9	2,300,000	2,300,000
US	35,700	154.0	5,497,000	5,497,000
1998				
MA	14,600	123.2	1,798,000	1,798,000
NJ	3,900	140.0	546,000	546,000
OR	2,200	161.4	355,000	355,000
WA	1,600	105.0	168,000	168,000
WI	14,400	175.0	2,520,000	2,520,000
US	36,700	146.8	5,387,000	5,387,000

¹ A barrel weighs 100 lbs.

**Cranberries: Utilization, Price, and Value
by State and United States, 1996-98**

Year and State	Utilization			Price per Barrel ²	Value of Utilized Production
	Fresh	Processed	Shrinkage ¹		
	<i>Barrels</i>	<i>Barrels</i>	<i>Barrels</i>	<i>Dollars</i>	<i>1,000 Dollars</i>
1996					
MA	70,000	1,628,000	24,000	70.90	122,090
NJ		461,000	6,000	61.80	28,861
OR		312,000		60.50	18,876
WA	20,000	160,000		61.00	10,980
WI	146,000	1,769,000	75,000	63.80	127,020
US	236,000	4,330,000	105,000	65.90	307,827
1997					
MA	93,000	1,946,000	61,000	66.20	139,020
NJ		579,000	3,000	56.60	32,941
OR		350,000		55.70	19,495
WA	22,000	143,000		55.70	9,190
WI	110,000	2,054,000	136,000	65.00	149,500
US	225,000	5,072,000	200,000	63.70	350,146
1998 ³					
MA					
NJ					
OR					
WA					
WI					
US					

¹ Cranberries paid for by processors and lost because of dehydration and berry breakdown after delivery.

² Weighted average of co-op and independent sales. Co-op prices represent pool proceeds excluding returns from non-cranberry products and before any deductions for capital stock and other retains.

³ Estimates for 1998 will be published on August 17, 1999.

**Grapes: Bearing Acreage and Yield by Type,
State, and United States, 1996-98**

State and Type	Bearing Acreage			Yield per Acre ¹		
	1996	1997	1998	1996	1997	1998
	<i>Acres</i>	<i>Acres</i>	<i>Acres</i>	<i>Tons</i>	<i>Tons</i>	<i>Tons</i>
AZ	4,300	4,300	4,300	5.81	5.81	5.35
AR	1,600	1,400	1,300	5.63	4.64	3.50
CA						
All Types	700,000	725,000	743,000	7.16	9.17	7.23
Wine	350,000	374,000	385,000	6.36	7.86	6.68
Table	80,000	81,000	83,000	7.40	10.19	7.77
Raisin	270,000	270,000	275,000	8.12	10.68	7.85
GA	1,300	1,200	1,400	2.15	2.17	2.29
MI	11,900	12,300	12,300	5.46	4.96	5.72
MO	800	700	750	2.50	2.79	2.93
NY	33,000	31,500	31,500	5.73	4.41	4.06
NC	480	470	470	2.50	2.02	3.19
OH	2,000	2,000	2,000	4.00	3.45	3.05
OR	5,800	6,300	7,100	2.59	2.94	2.07
PA	12,400	12,800	12,800	6.69	4.77	4.22
SC	250	300	250	2.40	1.67	1.20
WA	35,000	37,000	39,000	4.11	8.62	5.69
US	808,830	835,270	856,170	6.87	8.73	6.89

¹ Yield is based on total production.

**Grapes: Total and Utilized Production, Price, and Value
by Type, State, and United States, 1996-98**

State and Type	Total Production			Utilized Production		
	1996	1997	1998	1996	1997	1998
	<i>Tons</i>	<i>Tons</i>	<i>Tons</i>	<i>Tons</i>	<i>Tons</i>	<i>Tons</i>
AZ	25,000	25,000	23,000	25,000	25,000	23,000
AR	9,000	6,500	4,550	8,000	5,500	4,430
CA						
All Types	5,009,000	6,648,000	5,373,000	5,009,000	6,648,000	5,373,000
Wine	2,225,000	2,940,000	2,570,000	2,225,000	2,940,000	2,570,000
Table	592,000	825,000	645,000	592,000	825,000	645,000
Raisin ¹	2,192,000	2,883,000	2,158,000	2,192,000	2,883,000	2,158,000
GA	2,800	2,600	3,200	2,600	2,300	2,900
MI	65,000	61,000	70,400	59,500	61,000	70,400
MO	2,000	1,950	2,200	2,000	1,950	2,200
NY	189,000	139,000	128,000	184,000	137,000	125,000
NC	1,200	950	1,500	900	950	1,500
OH	8,000	6,900	6,100	7,800	6,800	6,000
OR	15,000	18,500	14,700	15,000	18,500	14,700
PA	83,000	61,000	54,000	79,000	61,000	54,000
SC	600	500	300	525	365	275
WA	144,000	319,000	222,000	144,000	319,000	222,000
US	5,553,600	7,290,900	5,902,950	5,537,325	7,287,365	5,899,405
	Price per Ton			Value of Utilized Production		
	1996	1997	1998	1996	1997	1998
	<i>Dollars</i>	<i>Dollars</i>	<i>Dollars</i>	<i>1,000 Dollars</i>	<i>1,000 Dollars</i>	<i>1,000 Dollars</i>
AZ	803.00	588.00	751.00	20,063	14,694	17,276
AR	629.00	586.00	497.00	5,035	3,225	2,202
CA						
All Types	438.00	434.00	447.00	2,191,630	2,882,760	2,403,293
Wine	536.00	598.00	581.00	1,192,185	1,756,935	1,491,908
Table	650.00	448.00	497.00	384,505	369,420	320,847
Raisin ¹	281.00	262.00	274.00	614,940	756,405	590,538
GA	1,050.00	933.00	1,110.00	2,727	2,147	3,210
MI	228.00	252.00	249.00	13,555	15,380	17,510
MO	480.00	479.00	531.00	959	934	1,169
NY	257.00	284.00	305.00	47,220	38,952	38,146
NC	757.00	968.00	1,030.00	681	920	1,538
OH	244.00	286.00	314.00	1,906	1,948	1,886
OR	1,020.00	1,120.00	1,180.00	15,300	20,720	17,346
PA	237.00	257.00	267.00	18,720	15,660	14,404
SC	1,090.00	1,220.00	1,520.00	571	445	417
WA	401.00	390.00	482.00	57,744	124,410	107,004
US	429.00	428.00	445.00	2,376,111	3,122,195	2,625,401

¹ Fresh equivalent of dried and not dried.

**Grapes: Fresh and Processed Utilization, and Price
by Type, State and United States, 1996-98**

Utilization, State, and Type	Fresh and Processed Utilization					
	Quantity			Price per Ton		
	1996	1997	1998	1996	1997	1998
	<i>Tons</i>	<i>Tons</i>	<i>Tons</i>	<i>Dollars</i>	<i>Dollars</i>	<i>Dollars</i>
Fresh						
AZ	13,700	14,000	12,800	1,250.00	850.00	1,160.00
AR	5,500	1,900	1,070	650.00	860.00	633.00
CA						
All Types	740,000	915,000	761,000	715.00	601.00	620.00
Wine	45,000	45,000	42,000	333.00	250.00	250.00
Table	465,000	595,000	489,000	775.00	554.00	607.00
Raisin	230,000	275,000	230,000	669.00	759.00	715.00
GA	1,500	1,200	1,600	1,300.00	1,200.00	1,600.00
MI	400	200	400	940.00	900.00	900.00
MO	100	100	100	533.00	533.00	540.00
NY	4,000	3,000	2,000	600.00	790.00	500.00
OH	200	100	200	600.00	716.00	672.00
PA	1,000	1,000	1,000	624.00	600.00	465.00
Oth Sts	625	615	625	850.00	1,100.00	1,430.00
US	767,025	937,115	780,795	725.00	607.00	631.00
Processed						
AZ	11,300	11,000	10,200	260.00	254.00	238.00
AR	2,500	3,600	3,360	584.00	442.00	454.00
CA						
All Types	4,269,000	5,733,000	4,612,000	389.00	407.00	419.00
Wine	2,180,000	2,895,000	2,528,000	540.00	603.00	586.00
Table	127,000	230,000	156,000	190.00	173.00	154.00
Raisin	1,962,000	2,608,000	1,928,000	235.00	210.00	221.00
GA	1,100	1,100	1,300	706.00	643.00	500.00
MI	59,100	60,800	70,000	223.00	250.00	245.00
MO	1,900	1,850	2,100	477.00	476.00	531.00
NY	180,000	134,000	123,000	249.00	273.00	302.00
OH	7,600	6,700	5,800	235.00	280.00	302.00
OR ¹	15,000	18,500	14,700	1,020.00	1,120.00	1,180.00
PA	78,000	60,000	53,000	232.00	251.00	263.00
WA	144,000	319,000	222,000	401.00	390.00	482.00
Oth Sts	800	700	1,150	903.00	980.00	921.00
US	4,770,300	6,350,250	5,118,610	382.00	402.00	417.00

¹ Includes small quantities sold fresh.

**Grapes: Fresh and Processed Value by Type,
State and United States, 1996-98**

Utilization, State, and Type	Fresh and Processed Utilization		
	Value of Utilized Production		
	1996	1997	1998
	<i>1,000 Dollars</i>	<i>1,000 Dollars</i>	<i>1,000 Dollars</i>
Fresh			
AZ	17,125	11,900	14,848
AR	3,575	1,634	677
CA			
All Types	529,230	549,605	471,773
Wine	14,985	11,250	10,500
Table	360,375	329,630	296,823
Raisin	153,870	208,725	164,450
GA	1,950	1,440	2,560
MI	376	180	360
MO	53	53	54
NY	2,400	2,370	1,000
OH	120	72	134
PA	624	600	465
Oth Sts	530	679	896
US	555,983	568,533	492,767
Processed			
AZ	2,938	2,794	2,428
AR	1,460	1,591	1,525
CA			
All Types	1,662,400	2,333,155	1,931,520
Wine	1,177,200	1,745,685	1,481,408
Table	24,130	39,790	24,024
Raisin	461,070	547,680	426,088
GA	777	707	650
MI	13,179	15,200	17,150
MO	906	881	1,115
NY	44,820	36,582	37,146
OH	1,786	1,876	1,752
OR ¹	15,300	20,720	17,346
PA	18,096	15,060	13,939
WA	57,744	124,410	107,004
Oth Sts	722	686	1,059
US	1,820,128	2,553,662	2,132,634

¹ Includes small quantities sold fresh.

**Grapes: Processed Utilization, Use, and Price
by Type, State and United States, 1996-98**

Use and State	Processed Utilization					
	Quantity			Price per Ton		
	1996	1997	1998	1996	1997	1998
	<i>Tons</i>	<i>Tons</i>	<i>Tons</i>	<i>Dollars</i>	<i>Dollars</i>	<i>Dollars</i>
Canned						
CA						
Raisin	36,000	44,000	36,000	267.00	268.00	270.00
US	36,000	44,000	36,000	267.00	268.00	270.00
Juice ^{1 2}						
MI	57,500	58,200	67,500	215.00	225.00	225.00
NY	122,000	90,000	87,000	234.00	246.00	265.00
OH	6,500	5,700	5,000	203.00	243.00	242.00
PA	67,100	54,000	41,500	229.00	240.00	252.00
WA	109,000	257,000	152,000	225.00	250.00	280.00
Oth Sts	350	450	250	513.00	450.00	362.00
US	362,450	465,350	353,250	227.00	245.00	262.00
Wine						
CA						
All Types	2,915,000	3,893,000	3,171,000	452.00	495.00	500.00
Wine	2,180,000	2,895,000	2,528,000	540.00	603.00	586.00
Table	117,000	212,000	136,000	188.00	169.00	150.00
Raisin	618,000	786,000	507,000	191.00	185.00	164.00
GA	1,000	1,000	1,300	695.00	627.00	500.00
MI	1,600	2,600	2,500	520.00	800.00	775.00
MO	1,850	1,800	2,050	480.00	480.00	535.00
NY	58,000	44,000	36,000	282.00	328.00	392.00
OH	1,100	1,000	800	424.00	492.00	679.00
OR ²	15,000	18,500	14,700	1,020.00	1,120.00	1,180.00
PA	10,900	6,000	11,500	247.00	350.00	303.00
WA	35,000	62,000	70,000	948.00	972.00	922.00
Oth Sts	3,400	4,500	4,910	673.00	549.00	574.00
US	3,042,850	4,034,400	3,314,760	457.00	503.00	510.00
Dried (Fr Basis)						
AZ	11,000	10,500	9,600	250.00	238.00	221.00
CA						
All Types	1,318,000	1,796,000	1,405,000	255.00	219.00	239.00
Table	10,000	18,000	20,000	210.00	220.00	180.00
Raisin	1,308,000	1,778,000	1,385,000	255.00	219.00	240.00
US	1,329,000	1,806,500	1,414,600	255.00	219.00	239.00

¹ Includes small quantities of other processed (jam, jelly, etc.).

² Includes small quantities for other uses.

**Concord Grapes: Processed Utilization by State
and United States, 1996-98**

State	Processed Utilization		
	1996	1997	1998
	<i>Tons</i>	<i>Tons</i>	<i>Tons</i>
MI	47,500	45,200	53,800
MO	225	230	225
NY	139,000	96,600	89,400
OH	6,500	5,600	4,700
PA	71,500	54,000	48,000
WA	104,000	242,500	143,000
Oth Sts	220	310	210
US	368,945	444,440	339,335

**Niagara Grapes: Processed Utilization by State
and United States, 1996-98**

State	Processed Utilization		
	1996	1997	1998
	<i>Tons</i>	<i>Tons</i>	<i>Tons</i>
MI	10,000	13,400	13,700
NY	10,700	12,800	10,000
OH	300	300	300
PA	3,500	4,100	3,100
WA	5,000	14,500	9,000
US	29,500	45,100	36,100

**All Pears: Bearing Acreage, Yield, Production, and Utilization
by State and United States, 1996-98¹**

State and Year	Bearing Acreage	Yield Per Acre ²	Production		Utilization	
			Total	Utilized	Fresh	Processed
	<i>Acres</i>	<i>Tons</i>	<i>Tons</i>	<i>Tons</i>	<i>Tons</i>	<i>Tons</i>
CA						
1996	22,000	14.40	317,000	317,000		
1997	20,000	15.60	312,000	312,000		
1998	19,300	15.90	307,000	307,000		
CO						
1996			1,200	1,100		
1997			2,600	2,580		
1998			3,500	3,325		
CT						
1996			1,050	1,050	1,050	
1997			1,200	1,200	1,200	
1998			1,100	1,100	1,100	
MI						
1996	1,000	6.00	6,000	6,000		
1997	900	4.44	4,000	4,000		
1998	900	5.60	5,040	4,800		
NY						
1996	2,400	6.25	15,000	15,000		
1997	2,000	4.00	8,000	8,000		
1998	2,000	5.75	11,500	10,000		
OR						
1996	17,300	10.10	175,000	175,000		
1997	17,800	14.30	255,000	254,500		
1998	17,800	13.80	245,000	244,600		
PA						
1996	1,000	4.00	4,000	3,900		
1997	1,000	4.00	4,000	4,000		
1998	1,000	6.10	6,100	6,100		
UT						
1996	190	6.84	1,300	1,200	1,200	
1997	180	3.89	700	650	650	
1998	180	5.00	900	870	870	
WA						
1996	24,200	12.40	300,000	300,000		
1997	24,400	18.60	455,000	455,000		
1998	24,400	15.40	375,000	375,000		
US ³						
1996	68,700	11.90	820,550	820,250	459,550	360,700
1997	66,880	15.60	1,042,500	1,041,930	572,310	469,620
1998	66,180	14.40	955,140	952,795	513,795	439,000

¹ Missing data not published to avoid disclosure of individual operations.

² Yield is based on total production.

³ Processed mostly canned but includes small quantities dried and other uses not published separately to avoid disclosure of individual operations.

**All Pears: Price and Value by State
and United States, 1996-98 ¹**

State and Year	Price per Ton			Value of Production		
	Fresh	Processed Exc. Dried	All	Fresh	Processed Inc. Dried	All
	<i>Dollars</i>	<i>Dollars</i>	<i>Dollars</i>	<i>1,000 Dollars</i>	<i>1,000 Dollars</i>	<i>1,000 Dollars</i>
CA						
1996			289.00			91,594
1997			273.00			85,184
1998			264.00			81,201
CO						
1996			436.00			480
1997			295.00			762
1998			449.00			1,494
CT						
1996	725.00		725.00	761		761
1997	700.00		700.00	840		840
1998	775.00		775.00	853		853
MI						
1996			260.00			1,560
1997			250.00			1,000
1998			271.00			1,302
NY						
1996			383.00			5,748
1997			384.00			3,070
1998			375.00			3,754
OR						
1996			457.00			79,906
1997			278.00			70,707
1998			338.00			82,712
PA						
1996			505.00			1,970
1997			552.00			2,208
1998			351.00			2,142
UT						
1996	483.00		483.00	580		580
1997	586.00		586.00	381		381
1998	307.00		307.00	267		267
WA						
1996			419.00			125,768
1997			272.00			123,670
1998			277.00			103,794
US ²						
1996	496.00	223.00	376.00	227,933	80,434	308,367
1997	329.00	213.00	276.00	188,022	99,800	287,822
1998	371.00	197.00	291.00	190,857	86,662	277,519

¹ Missing data not published to avoid disclosure of individual operations.

² Processed mostly canned but includes small quantities dried and other uses not published separately to avoid disclosure of individual operations.

**Pears: Bearing Acreage, Yield, Production, and Utilization
by Type, State, and United States, 1996-98**

Type, State and Year	Bearing Acreage	Yield Per Acre ¹	Production		Utilization	
			Total	Utilized	Fresh	Processed
	<i>Acres</i>	<i>Tons</i>	<i>Tons</i>	<i>Tons</i>	<i>Tons</i>	<i>Tons</i>
Bartlett ²						
CA						
1996	17,500	16.40	287,000	287,000	77,000	210,000
1997	15,600	18.10	282,000	282,000	68,000	214,000
1998	15,000	18.50	277,000	277,000	53,000	224,000
OR						
1996	5,000	9.00	45,000	45,000	18,000	27,000
1997	5,000	15.00	75,000	74,500	33,500	41,000
1998	5,000	13.00	65,000	64,600	29,600	35,000
WA						
1996	11,200	9.38	105,000	105,000	38,000	67,000
1997	11,200	18.30	205,000	205,000	50,000	155,000
1998	11,200	12.90	145,000	145,000	43,000	102,000
Total						
1996	33,700	13.00	437,000	437,000	133,000	304,000
1997	31,800	17.70	562,000	561,500	151,500	410,000
1998	31,200	15.60	487,000	486,600	125,600	361,000
Other ^{3 4}						
CA						
1996	4,500	6.67	30,000	30,000		
1997	4,400	6.82	30,000	30,000		
1998	4,300	6.98	30,000	30,000		
OR						
1996	12,300	10.60	130,000	130,000		
1997	12,800	14.10	180,000	180,000		
1998	12,800	14.10	180,000	180,000		
WA						
1996	13,000	15.00	195,000	195,000		
1997	13,200	18.90	250,000	250,000		
1998	13,200	17.40	230,000	230,000		
Total						
1996	29,800	11.90	355,000	355,000	305,000	50,000
1997	30,400	15.10	460,000	460,000	405,000	55,000
1998	30,300	14.50	440,000	440,000	370,000	70,000

¹ Yield is based on total production.

² Processed mostly canned but includes small quantities dried and other uses not published separately to avoid disclosure of individual operations.

³ Missing data not published to avoid disclosure of individual operations.

⁴ Processed mostly juice, but includes small quantities canned and other uses not published separately to avoid disclosure of individual operations.

**Pears: Price and Value by Type, State,
and United States, 1996-98**

Type, State and Year	Price per Ton			Value of Production		
	Fresh	Processed Exc. Dried	All	Fresh	Processed Inc. Dried	All
	<i>Dollars</i>	<i>Dollars</i>	<i>Dollars</i>	<i>1,000 Dollars</i>	<i>1,000 Dollars</i>	<i>1,000 Dollars</i>
Bartlett ¹						
CA						
1996	362.00	233.00	267.00	27,874	48,720	76,594
1997	318.00	247.00	263.00	21,624	52,430	74,054
1998	309.00	231.00	246.00	16,377	51,744	68,121
OR						
1996	524.00	252.00	361.00	9,432	6,804	16,236
1997	389.00	225.00	299.00	13,032	9,225	22,257
1998	507.00	203.00	342.00	15,007	7,105	22,112
WA						
1996	578.00	262.00	376.00	21,964	17,554	39,518
1997	412.00	214.00	262.00	20,600	33,170	53,770
1998	460.00	227.00	296.00	19,780	23,154	42,934
Total						
1996	446.00	241.00	303.00	59,270	73,078	132,348
1997	365.00	232.00	267.00	55,256	94,825	150,081
1998	407.00	227.00	274.00	51,164	82,003	133,167
Other ^{2 3}						
CA						
1996			500.00			15,000
1997			371.00			11,130
1998			436.00			13,080
OR						
1996			490.00			63,670
1997			269.00			48,450
1998			337.00			60,600
WA						
1996			442.00			86,250
1997			280.00			69,900
1998			265.00			60,860
Total						
1996	522.00	112.00	465.00	159,320	5,600	164,920
1997	310.00	70.90	281.00	125,580	3,900	129,480
1998	356.00	38.60	306.00	131,840	2,700	134,540

¹ Processed mostly canned but includes small quantities dried and other uses not published separately to avoid disclosure of individual operations.

² Processed mostly juice but includes small quantities canned and other uses not published separately to avoid disclosure of individual operations.

³ Missing data not published to avoid disclosure of individual operations.

**Peaches: Bearing Acreage and Yield by Type,
State, and United States, 1996-98**

State	Bearing Acreage			Yield per Acre ¹		
	1996	1997	1998	1996	1997	1998
	<i>Acres</i>	<i>Acres</i>	<i>Acres</i>	<i>Pounds</i>	<i>Pounds</i>	<i>Pounds</i>
AL	3,600	3,500	3,500	140	7,140	4,570
AR	2,700	2,700	2,800	440	5,300	4,460
CA						
Freestone	34,300	35,200	36,100	19,700	21,000	19,700
CO	1,900	1,900	1,900	8,950	3,680	10,500
CT	340	330	330	6,180	6,970	6,970
DE ²	210			10,000		
GA	21,000	20,000	20,000	480	8,000	3,500
ID	790	790	790	10,800	9,490	11,400
IL	1,600	1,600	1,600	1,250	7,810	9,380
IN	660	650	650	3,030	3,850	5,850
KS	170	180	180	2,350	1,110	2,780
KY	420	420	380	1,190	1,430	4,740
LA	725	450	430	280	2,440	3,260
MD	1,200	1,100	1,100	7,750	8,820	9,550
MA	320	320	320	5,000	6,250	5,630
MI	5,300	5,000	5,000	7,170	11,000	8,600
MO	1,400	1,500	1,600	2,360	6,330	5,630
NJ	8,600	8,000	8,000	9,070	8,130	8,750
NY	1,600	1,600	1,600	7,500	7,500	6,250
NC	1,700	1,600	1,550	1,120	6,250	16,100
OH	1,000	1,000	900	7,100	6,000	7,560
OK ³	1,500	1,400	1,400		1,430	14,300
OR	1,000	950	950	7,000	6,110	8,420
PA	5,500	5,500	5,500	12,700	12,700	11,800
SC	15,500	15,500	16,500	520	10,300	8,480
TN	1,200	900	800	330	3,890	4,000
TX	12,000	8,000	8,500	500	2,500	2,820
UT	1,200	1,300	1,300	6,250	6,230	5,920
VA	1,600	1,560	1,560	8,750	5,770	8,970
WA	2,500	2,500	2,500	4,400	18,400	20,400
WV	1,800	1,300	1,300	8,890	8,460	10,000
Total Above	133,335	126,750	129,040	7,590	11,600	10,700
CA						
Clingstone	31,000	31,000	30,400	35,300	37,000	34,400
US	164,335	157,750	159,440	12,800	16,600	15,200

¹ Yield is based on total production.

² Estimates discontinued in 1997.

³ No significant commercial production in 1996 due to freeze damage.

**Peaches: Total and Utilized Production, by Type,
State, and United States, 1996-98**

State	Total Production			Utilized Production		
	1996	1997	1998	1996	1997	1998
	<i>Million Pounds</i>	<i>Million Pounds</i>	<i>Million Pounds</i>	<i>Million Pounds</i>	<i>Million Pounds</i>	<i>Million Pounds</i>
AL	0.5	25.0	16.0	0.5	24.0	15.0
AR	1.2	14.3	12.5	1.1	14.3	11.1
CA						
Freestone	674.0	739.0	710.0	674.0	739.0	710.0
CO	17.0	7.0	20.0	16.0	6.5	18.5
CT	2.1	2.3	2.3	2.1	2.3	2.3
DE ¹	2.1			2.1		
GA	10.0	160.0	70.0	10.0	145.0	65.0
ID	8.5	7.5	9.0	8.2	7.1	8.7
IL	2.0	12.5	15.0	1.0	10.0	13.5
IN	2.0	2.5	3.8	1.9	2.4	3.7
KS	0.4	0.2	0.5	0.3	0.2	0.5
KY	0.5	0.6	1.8	0.4	0.5	1.5
LA	0.2	1.1	1.4	0.2	1.0	1.4
MD	9.3	9.7	10.5	8.6	9.0	10.2
MA	1.6	2.0	1.8	1.6	2.0	1.7
MI	38.0	55.0	43.0	38.0	55.0	42.5
MO	3.3	9.5	9.0	3.3	9.5	9.0
NJ	78.0	65.0	70.0	77.0	65.0	68.0
NY	12.0	12.0	10.0	11.5	11.5	8.5
NC	1.9	10.0	25.0	1.9	10.0	25.0
OH	7.1	6.0	6.8	7.1	5.8	6.5
OK ²		2.0	20.0		1.8	18.0
OR	7.0	5.8	8.0	7.0	5.4	7.9
PA	70.0	70.0	65.0	70.0	70.0	65.0
SC	8.0	160.0	140.0	6.6	120.0	105.0
TN	0.4	3.5	3.2	0.4	3.0	3.0
TX	6.0	20.0	24.0	5.2	16.0	19.0
UT	7.5	8.1	7.7	7.3	7.6	7.0
VA	14.0	9.0	14.0	13.0	8.0	12.0
WA	11.0	46.0	51.0	11.0	46.0	51.0
WV	16.0	11.0	13.0	15.5	10.5	12.4
Total Above	1,011.6	1,476.6	1,384.3	1,002.8	1,408.4	1,322.9
CA						
Clingstone	1,093.0	1,148.0	1,045.0	1,041.0	1,100.0	1,030.7
US	2,104.6	2,624.6	2,429.3	2,043.8	2,508.4	2,353.6

¹ Estimates discontinued in 1997.

² No significant commercial production in 1996 due to freeze damage.

**Peaches: Price and Value by Type, State,
and United States, 1996-98**

State	Price per Pound			Value of Utilized Production		
	1996	1997	1998	1996	1997	1998
	<i>Dollars</i>	<i>Dollars</i>	<i>Dollars</i>	<i>1,000 Dollars</i>	<i>1,000 Dollars</i>	<i>1,000 Dollars</i>
AL	0.506	0.302	0.456	253	7,248	6,840
AR	0.155	0.290	0.328	171	4,142	3,639
CA						
Freestone	0.217	0.122	0.159	146,306	89,937	113,146
CO	0.496	0.661	0.488	7,934	4,297	9,036
CT	0.550	0.700	0.700	1,155	1,610	1,610
DE ¹	0.425			893		
GA	0.338	0.243	0.345	3,380	35,235	22,440
ID	0.470	0.574	0.436	3,855	4,075	3,791
IL	0.640	0.406	0.433	640	4,060	5,846
IN	0.473	0.545	0.318	899	1,308	1,177
KS	0.450	0.420	0.470	135	84	235
KY	0.623	0.300	0.375	249	150	563
LA	0.780	0.453	0.710	156	453	994
MD	0.400	0.430	0.300	3,440	3,870	3,060
MA	0.550	0.700	0.800	880	1,400	1,360
MI	0.270	0.263	0.272	10,250	14,450	11,551
MO	0.460	0.350	0.396	1,518	3,325	3,564
NJ	0.437	0.449	0.449	33,649	29,185	30,518
NY	0.348	0.461	0.416	4,003	5,296	3,538
NC	0.402	0.350	0.380	764	3,500	9,500
OH	0.462	0.400	0.416	3,280	2,320	2,704
OK ²		0.224	0.412		403	7,416
OR	0.407	0.529	0.315	2,847	2,855	2,490
PA	0.330	0.337	0.317	23,126	23,587	20,620
SC	0.591	0.208	0.260	3,901	24,900	27,258
TN	0.675	0.380	0.450	270	1,140	1,350
TX	0.740	0.350	0.520	3,848	5,600	9,880
UT	0.320	0.270	0.270	2,336	2,052	1,890
VA	0.340	0.280	0.300	4,420	2,240	3,600
WA	0.464	0.420	0.344	5,100	19,335	17,556
WV	0.369	0.293	0.264	5,726	3,080	3,270
Total Above	0.275	0.214	0.250	275,384	301,137	330,442
CA						
Clingstone	0.110	0.130	0.110	114,510	143,000	113,377
US	0.191	0.177	0.189	389,894	444,137	443,819

¹ Estimates discontinued in 1997.

² No significant commercial production in 1996 due to freeze damage.

**Peaches: Fresh and Processed Utilization, and Price
by Type, State and United States, 1996-98¹**

Use and State	Fresh and Processed Utilization					
	Quantity			Price per Unit		
	1996	1997	1998	1996	1997	1998
	<i>Million Pounds</i>	<i>Million Pounds</i>	<i>Million Pounds</i>	<i>Dollars per Pound</i>	<i>Dollars per Pound</i>	<i>Dollars per Pound</i>
Fresh						
AL	0.5	24.0	15.0	0.505	0.302	0.456
CA						
Freestone	458.7	498.1	460.6	0.280	0.138	0.198
CT	2.1	2.3	2.3	0.550	0.700	0.700
DE ²	2.1			0.425		
IL	1.0	10.0	13.5	0.640	0.406	0.433
IN	1.9	2.4	3.7	0.473	0.545	0.318
KY	0.4	0.5	1.5	0.623	0.299	0.375
LA	0.2	1.0	1.4	0.780	0.453	0.710
MA	1.6	2.0	1.7	0.550	0.700	0.800
MI ³			31.5			0.315
MO	3.3	9.5	9.0	0.460	0.350	0.396
OH	7.1	5.8	6.5	0.462	0.400	0.416
OK ⁴		1.8	18.0		0.224	0.412
SC	6.6	110.0	91.0	0.591	0.216	0.280
TN	0.4	3.0	3.0	0.676	0.380	0.450
TX	5.2	16.0	19.0	0.740	0.350	0.520
UT	7.3	7.6	7.0	0.320	0.270	0.270
VA	13.0	8.0	12.0	0.340	0.280	0.300
Oth Sts ³	258.4	424.8	332.3	0.394	0.350	0.384
US	769.8	1,126.8	1,029.0	0.331	0.244	0.294
	<i>Million Pounds</i>	<i>Million Pounds</i>	<i>Million Pounds</i>	<i>Dollars per Ton</i>	<i>Dollars per Ton</i>	<i>Dollars per Ton</i>
Processed						
CA						
Clingstone	1,041.0	1,100.0	1,030.7	219.00	260.00	219.00
Freestone ⁵	215.3	240.9	249.4	181.00	194.00	188.00
MI ³			11.0			295.00
SC		10.0	14.0		228.00	254.00
Oth Sts ³	17.7	30.7	19.5	283.00	283.00	214.00
US ⁶	1,274.0	1,381.6	1,324.6	212.00	246.00	213.00

¹ Missing data included in Other States to avoid disclosure of individual operations.

² Estimates discontinued in 1997.

³ MI fresh and processed data included in Other States in 1996 and 1997.

⁴ No significant commercial production in 1996 due to freeze damage.

⁵ CA Freestone quantity and value include dried, price excludes dried.

⁶ US quantity, price, and value include dried.

**Peaches: Fresh and Processed Value by State
and United States, 1996-98¹**

Use and State	Fresh and Processed Utilization		
	Value of Utilized Production		
	1996	1997	1998
	<i>1,000 Dollars</i>	<i>1,000 Dollars</i>	<i>1,000 Dollars</i>
Fresh			
AL	253	7,248	6,840
CA			
Freestone	128,436	68,738	91,199
CT	1,155	1,610	1,610
DE ²	893		
IL	640	4,060	5,846
IN	899	1,308	1,177
KY	249	150	563
LA	156	453	994
MA	880	1,400	1,360
MI ³			9,923
MO	1,518	3,325	3,564
OH	3,280	2,320	2,704
OK ⁴		403	7,416
SC	3,901	23,760	25,480
TN	270	1,140	1,350
TX	3,848	5,600	9,880
UT	2,336	2,052	1,890
VA	4,420	2,240	3,600
Oth Sts ³	101,875	148,651	127,609
US	255,009	274,458	303,005
Processed			
CA			
Clingstone	114,510	143,000	113,377
Freestone ⁵	17,870	21,199	21,947
MI ³			1,628
SC		1,140	1,778
Oth Sts ³	2,505	4,340	2,084
US ⁶	134,885	169,679	140,814

¹ Missing data included in Other States to avoid disclosure of individual operations.

² Estimates discontinued in 1997.

³ MI fresh and processed data included in Other States in 1996 and 1997.

⁴ No significant commercial production in 1996 due to freeze damage.

⁵ CA Freestone quantity and value include dried, price excludes dried.

⁶ US quantity, price, and value include dried.

**Peaches: Processed Utilization, and Price by Use,
State, and United States, 1996-98**

Use and State	Processed Utilization					
	Quantity			Price per Ton		
	1996	1997	1998	1996	1997	1998
	<i>Million Pounds</i>	<i>Million Pounds</i>	<i>Million Pounds</i>	<i>Dollars</i>	<i>Dollars</i>	<i>Dollars</i>
Canned						
CA						
Clingstone	961.0	1,058.0	939.0	220.00	264.00	230.00
Freestone	18.2	21.3	25.5	204.00	246.00	214.00
Oth Sts	15.1	28.5	20.7	304.00	298.00	278.00
US	994.3	1,107.8	985.2	221.00	265.00	231.00
Frozen						
CA						
Freestone	155.7	178.9	163.8	186.00	190.00	201.00
Oth Sts	27.5	22.1	22.0	200.00	218.00	229.00
US	183.2	201.0	185.8	188.00	196.00	206.00
Dried						
CA						
Freestone	32.7	34.1	25.0	78.00	68.00	67.40
US	32.7	34.1	25.0	78.00	68.00	67.40
Other ¹						
Oth Sts	63.8	38.7	128.6	192.00	128.00	103.00
US	63.8	38.7	128.6	192.00	128.00	103.00

¹ Pickles, wine, brandy, and baby food.

**Hawaii Crops: Acreage Harvested, Yield, Utilized
Production, and Utilization, 1996-98**

Crop and Year	Acreage Harvested	Yield Per Acre	Utilized Production	Utilization	
				Fresh	Processed
	<i>Acres</i>	<i>1,000 Pounds</i>	<i>1,000 Pounds</i>	<i>1,000 Pounds</i>	<i>1,000 Pounds</i>
Bananas					
1996	960	13.5	13,000	13,000	
1997	950	14.4	13,700	13,700	
1998	1,420	14.8	21,000	21,000	
Guavas					
1996	750	21.7	16,300		16,300
1997	730	21.8	15,900		15,900
1998	710	20.6	14,600		14,600
Papayas					
1996	1,835	22.8	41,800	37,800	4,000
1997	1,985	19.5	38,800	35,700	3,100
1998	2,120	18.8	39,900	35,600	4,300
			<i>Tons</i>	<i>Tons</i>	<i>Tons</i>
Pineapples ¹					
1996	20,000		347,000	115,000	232,000
1997	19,900		324,000	103,000	221,000
1998	21,000		332,000	111,000	221,000

¹ Acreage is total acres in crop, not harvested acreage. Yield is not estimated. Production and processed utilization on a fresh weight basis.

Hawaii Crops: Price and Value, 1996-98

Crop and Year	Price			Value of Production		
	Fresh	Processed	All	Fresh	Processed	Total
	<i>Dollars per Pound</i>	<i>Dollars per Pound</i>	<i>Dollars per Pound</i>	<i>1,000 Dollars</i>	<i>1,000 Dollars</i>	<i>1,000 Dollars</i>
Bananas						
1996	0.400		0.400	5,200		5,200
1997	0.380		0.380	5,206		5,206
1998	0.350		0.350	7,350		7,350
Guavas						
1996		0.138	0.138		2,249	2,249
1997		0.122	0.122		1,940	1,940
1998		0.122	0.122		1,781	1,781
Papayas						
1996	0.448	0.030	0.408	16,934	120	17,054
1997	0.529	0.030	0.489	18,885	93	18,978
1998	0.350	0.030	0.316	12,460	129	12,589
	<i>Dollars per Ton</i>	<i>Dollars per Ton</i>	<i>Dollars per Ton</i>			
Pineapples ¹						
1996	598.00	117.00	276.00	68,770	27,144	95,914
1997	618.00	127.00	283.00	63,654	28,067	91,721
1998	575.00	131.00	279.00	63,825	28,951	92,776

¹ Processed price is for fresh fruit delivered to processing plant door. Fresh price is for fruit at wholesale establishments for local sales and at shippers dock for mainland and foreign sales.

**Apples and Berries: Unutilized Production by State
and United States, 1996-98**

Crop and State	Unharvested Production			Harvested Not Sold		
	1996	1997	1998	1996	1997	1998
	<i>Million Pounds</i>	<i>Million Pounds</i>	<i>Million Pounds</i>	<i>Million Pounds</i>	<i>Million Pounds</i>	<i>Million Pounds</i>
Apples						
AZ		0.1			0.8	1.0
AR	0.5		0.8		0.1	0.1
CO	1.0	1.0	5.0			1.0
CT		1.0	0.5			
GA	1.0	1.0	3.0			
ID			38.0			2.0
IL	1.0	4.0	9.0	1.0	3.0	1.0
IN	1.5	1.5	3.5	0.5	0.5	0.5
IA	0.9	5.4	0.6	0.2	0.1	
KS	0.1	0.9	0.6	0.1	0.2	0.1
KY	0.9	0.5	1.6	0.1	0.2	0.4
ME	2.0	1.5	1.5		0.5	
MD	1.5	1.5	0.6			
MA	1.0	1.5	2.0	0.5		
MI			40.0			
MN	2.0	3.6	3.8	0.2	0.9	1.3
MO		2.5	2.3			2.7
NH	1.0	0.5				
NJ	1.0			1.0		1.0
NY			100.0			10.0
NC		2.0	50.0			
OH			2.0			3.0
OR			37.0			
PA		3.0			7.0	7.0
RI	0.2	0.2	0.4			
SC	1.6	3.6	1.0	0.4	0.4	2.0
TN	1.0	1.0	3.0	0.2	0.5	0.5
UT	1.0	1.0	17.0	3.0		1.0
VT	1.0	1.0	1.5			
VA	15.0	8.0	11.0			
WA			500.0			
WV	4.0	3.0	2.0	1.0	2.0	1.0
WI	3.5	3.0	10.7	1.0	1.0	3.4
US	42.7	52.3	848.4	9.2	17.2	39.0
	<i>1,000 Pounds</i>	<i>1,000 Pounds</i>	<i>1,000 Pounds</i>	<i>1,000 Pounds</i>	<i>1,000 Pounds</i>	<i>1,000 Pounds</i>
Berries						
Red Raspberries						
WA		3,400	3,000		3,400	2,000
Blueberries						
AL		330	428		30	30
AR	400	300	210	100	100	
FL	350	350	350	50	50	50
GA	500	1,000	1,500			
IN	100	100	100			
NJ	1,000	1,000	1,000			
NY	100	100	100			
NC	1,000		800			
WA	500		200			
US	3,950	3,180	4,688	150	180	80

**Peaches and Tart Cherries: Unutilized Production
by State and United States, 1996-98**

Crop and State	Unharvested Production			Harvested Not Sold		
	1996	1997	1998	1996	1997	1998
	<i>Million Pounds</i>	<i>Million Pounds</i>	<i>Million Pounds</i>	<i>Million Pounds</i>	<i>Million Pounds</i>	<i>Million Pounds</i>
Peaches						
AL		1.0	1.0			
AR	0.1		1.3			0.1
CA						
Clingstone				52.0	48.0	14.3
CO	0.3	0.3	1.0	0.7	0.2	0.5
DE ¹						
GA		5.0			10.0	5.0
ID				0.3	0.4	0.3
IL		2.0	1.0	1.0	0.5	0.5
IN	0.1	0.1	0.1			
KS	0.1					
KY	0.1	0.1	0.3			
LA					0.1	
MD			0.2	0.7	0.7	0.1
MA						0.1
MI			0.3			0.2
NJ	1.0		1.0			1.0
NY	0.5	0.5	1.5			
OH		0.1	0.2		0.1	0.1
OK		0.1	1.9		0.1	0.1
OR		0.4	0.1			
SC	0.4	13.0	5.0	1.0	27.0	30.0
TN		0.5	0.2			
TX	0.6	4.0	4.0	0.2		1.0
UT	0.1	0.2	0.4	0.1	0.3	0.3
VA	1.0	1.0	2.0			
WV	0.3	0.3	0.4	0.2	0.2	0.2
US	4.6	28.6	21.9	56.2	87.6	53.8
Cherries (Tart)						
CO	0.1	0.1	0.1			
MI		4.0				34.0
NY	3.8	1.0	1.0	1.0	0.3	0.8
OR		0.3	0.1			
UT	3.5	2.0	6.0	2.5	1.5	
WI	0.7	0.3	0.5	0.1	0.1	0.1
US	8.1	7.7	7.7	3.6	1.9	34.9

¹ Estimates discontinued in 1997.

**Miscellaneous Crops: Unutilized Production
by State and United States, 1996-98**

Crop and State	Unharvested Production			Harvested Not Sold		
	1996	1997	1998	1996	1997	1998
	<i>Tons</i>	<i>Tons</i>	<i>Tons</i>	<i>Tons</i>	<i>Tons</i>	<i>Tons</i>
Apricots						
CA		9,600	10,400			
UT	10		20			
US	10	9,600	10,420			
Cherries (Sweet)						
ID				50		130
MI			1,500			500
MT	30	200	120	40	30	40
NY	100	20	50		10	
OR			500			
PA	80		125			25
UT	100	20	100			
WA	2,000	2,000				
US	2,310	2,240	2,395	90	40	695
Grapes						
AR	1,000	1,000	100			20
GA	130	300	300	70		
MI	5,500					
NY	3,000	1,000	3,000	2,000	1,000	
NC	300					
OH	200	100	100			
PA	4,000					
SC	30	125	20	45	10	5
US	14,160	2,525	3,520	2,115	1,010	25
Kiwifruit						
CA				3,500	3,200	3,600
Pears						
CO	90	15	120	10	5	55
MI			85			155
NY			1,500			
OR		400	400		100	
PA				100		
UT	50	25	28	50	25	2
US	140	440	2,133	160	130	212
Prunes & Plums						
ID		100		300	200	200
OR	500	1,500	600			
US	500	1,600	600	300	200	200

**Nut Crops: Bearing Acreage and Yield by Crop,
State, and United States, 1996-98**

Crop and State	Bearing Acreage			Yield per Acre ¹		
	1996	1997	1998	1996	1997	1998
	<i>Acres</i>	<i>Acres</i>	<i>Acres</i>	<i>Tons (In-Shell Basis)</i>	<i>Tons (In-Shell Basis)</i>	<i>Tons (In-Shell Basis)</i>
Hazelnuts						
OR	28,200	28,600	29,100	0.66	1.63	0.53
WA	400	400	430	0.63	0.88	0.23
US	28,600	29,000	29,530	0.66	1.62	0.52
Walnuts (English)						
CA	192,000	193,000	193,000	1.08	1.39	1.18
				<i>Pounds (In-Shell Basis)</i>	<i>Pounds (In-Shell Basis)</i>	<i>Pounds (In-Shell Basis)</i>
Macadamia Nuts						
HI	19,200	19,200	19,200	2,940	3,020	2,990
Pistachios						
CA	64,300	65,400	65,900	1,630	2,750	2,850
				<i>Pounds (Shelled Basis)</i>	<i>Pounds (Shelled Basis)</i>	<i>Pounds (Shelled Basis)</i>
Almonds						
CA	428,000	442,000	454,000	1,190	1,720	1,150

¹ Yield is based on utilized production.

**Nut Crops: Production and Price by Crop,
State, and United States, 1996-98**

Crop and State	Production			Price per Unit		
	1996	1997	1998	1996	1997	1998
	<i>Tons (In-Shell Basis)</i>	<i>Tons (In-Shell Basis)</i>	<i>Tons (In-Shell Basis)</i>	<i>Dollars per Ton</i>	<i>Dollars per Ton</i>	<i>Dollars per Ton</i>
Hazelnuts						
OR	18,750	46,650	15,400	859.00	899.00	964.00
WA	250	350	100	940.00	940.00	960.00
US	19,000	47,000	15,500	860.00	899.00	964.00
Walnuts (English)						
CA	208,000	269,000	227,000	1,580.00	1,430.00	1,010.00
	1,000 Pounds					
	<i>(In-Shell Basis)</i>	<i>(In-Shell Basis)</i>	<i>(In-Shell Basis)</i>	<i>Dollars per Pound</i>	<i>Dollars per Pound</i>	<i>Dollars per Pound</i>
Macadamia Nuts						
HI	56,500	58,000	57,500	0.780	0.750	0.650
Pistachios						
CA	105,000	180,000	188,000	1.160	1.130	1.030
	1,000 Pounds					
	<i>(Shelled Basis)</i>	<i>(Shelled Basis)</i>	<i>(Shelled Basis)</i>			
Almonds ¹						
CA	510,000	759,000	520,000	2.08	1.56	1.40

¹ Price and value are based on the edible portion of the crop only. Production includes inedible quantities of no value as follows: 1996 - 20.4 million pounds, 1997 - 15.0 million pounds, and 1998 - 21.0 million pounds.

Nut Crops: Use by Crop, State, and United States, 1996-98

Crop and State	Production					
	Sold In-Shell			Sold Shelled ¹		
	1996	1997	1998	1996	1997	1998
	<i>Tons</i>	<i>Tons</i>	<i>Tons</i>	<i>Tons</i>	<i>Tons</i>	<i>Tons</i>
Hazelnuts						
OR	12,000	22,000	11,550	6,750	24,650	3,850
WA	250	200	75	50	150	25
US	12,250	22,200	11,625	6,800	24,800	3,875
Walnuts (English)						
CA	64,000	77,000	62,000	144,000	192,000	165,000
	<i>1,000 Pounds</i>	<i>1,000 Pounds</i>	<i>1,000 Pounds</i>	<i>1,000 Pounds</i>	<i>1,000 Pounds</i>	<i>1,000 Pounds</i>
Pecans						
US	31,000	36,500	19,000	178,500	298,500	127,400
	<i>Marketable In-Shell</i>	<i>Marketable In-Shell</i>	<i>Marketable In-Shell</i>	<i>Shelling Stock ¹</i>	<i>Shelling Stock ¹</i>	<i>Shelling Stock ¹</i>
Pistachios						
CA	85,000	137,000	138,000	20,000	43,000	50,000

¹ In-shell basis.

**Nut Crops: Value and Meat Production by Crop,
State, and United States, 1996-98**

Crop and State	Value of Utilized Production		
	1996	1997	1998
	<i>1,000 Dollars</i>	<i>1,000 Dollars</i>	<i>1,000 Dollars</i>
Hazelnuts			
OR	16,106	41,938	14,846
WA	235	329	96
US	16,341	42,267	14,942
Walnuts (English)			
CA	328,640	384,670	229,270
Macadamia Nuts			
HI	44,070	43,500	37,375
Pistachios			
CA	121,800	203,400	193,640
Almonds ¹			
CA	1,018,368	1,160,640	698,600
	Meat Production of Nuts Sold Shelled		
	1996	1997	1998
	<i>Tons</i>	<i>Tons</i>	<i>Tons</i>
Hazelnuts			
OR	2,600	8,950	1,550
WA	20	60	10
US	2,620	9,010	1,560
Walnuts (English)			
CA	59,000	79,000	68,000
Pecans	<i>1,000 Pounds</i>	<i>1,000 Pounds</i>	<i>1,000 Pounds</i>
US	80,000	132,000	57,000
Pistachios			
CA	7,700	17,900	20,200

¹ Price and value are based on the edible portion of the crop only. Production includes inedible quantities of no value as follows: 1996 - 20.4 million pounds, 1997 - 15.0 million pounds, and 1998 - 21.0 million pounds.

**Pecans: Utilized Production and Price by Variety,
State, and United States, 1996-98**

Variety and State	Utilized Production			Price per Pound		
	1996	1997	1998	1996	1997	1998
	<i>1,000 Pounds</i>	<i>1,000 Pounds</i>	<i>1,000 Pounds</i>	<i>Dollars</i>	<i>Dollars</i>	<i>Dollars</i>
Improved Varieties ¹						
AL	7,500	7,000	3,500	0.560	0.760	0.954
AZ	17,000	18,500	13,000	0.620	1.250	1.590
AR	800	1,200	300	1.000	0.750	1.150
CA	1,300	3,000	1,700	0.830	1.320	1.660
FL	500	600	200	0.650	1.000	1.100
GA	80,000	77,000	35,000	0.646	0.904	1.240
LA	2,000	2,000	3,000	0.900	0.900	1.000
MS	1,300	2,600	800	0.780	0.844	0.870
NM	22,000	45,000	32,000	0.740	0.940	1.490
NC	425	900	1,500	0.650	0.950	1.000
OK	500	3,000	200	0.990	0.760	1.220
SC	1,800	2,100	800	0.700	0.840	1.240
TX	30,000	40,000	20,000	0.800	0.863	1.300
US	165,125	202,900	112,000	0.689	0.933	1.350
Native and Seedling						
AL	4,500	6,000	1,500	0.480	0.518	0.674
AR	400	2,300	250	0.700	0.630	0.880
FL	1,400	1,200	1,100	0.550	0.600	0.750
GA	10,000	23,000	5,000	0.452	0.591	1.110
KS	200	4,200	50	0.980	0.670	0.880
LA	14,000	10,000	13,000	0.400	0.480	0.600
MS	1,300	1,400	400	0.570	0.583	0.660
NC	375	600	1,000	0.500	0.650	0.800
OK	1,500	32,000	1,800	0.520	0.550	0.680
SC	700	1,400	300	0.530	0.610	1.020
TX	10,000	50,000	10,000	0.500	0.477	0.850
US	44,375	132,100	34,400	0.464	0.530	0.772
All Pecans						
AL	12,000	13,000	5,000	0.530	0.648	0.870
AZ	17,000	18,500	13,000	0.620	1.250	1.590
AR	1,200	3,500	550	0.900	0.671	1.030
CA	1,300	3,000	1,700	0.830	1.320	1.660
FL	1,900	1,800	1,300	0.576	0.733	0.804
GA	90,000	100,000	40,000	0.624	0.832	1.220
KS	200	4,200	50	0.980	0.670	0.880
LA	16,000	12,000	16,000	0.463	0.550	0.675
MS	2,600	4,000	1,200	0.675	0.753	0.800
NM	22,000	45,000	32,000	0.740	0.940	1.490
NC	800	1,500	2,500	0.580	0.830	0.920
OK	2,000	35,000	2,000	0.638	0.568	0.734
SC	2,500	3,500	1,100	0.652	0.748	1.180
TX	40,000	90,000	30,000	0.725	0.649	1.150
US	209,500	335,000	146,400	0.641	0.774	1.210

¹ Budded, grafted, or topworked varieties.

**Pecans: Value of Production by Variety,
State, and United States, 1996-98**

Variety and State	Value of Production		
	1996	1997	1998
	<i>1,000 Dollars</i>	<i>1,000 Dollars</i>	<i>1,000 Dollars</i>
Improved Varieties ¹			
AL	4,200	5,320	3,339
AZ	10,540	23,125	20,670
AR	800	900	345
CA	1,079	3,960	2,822
FL	325	600	220
GA	51,680	69,608	43,400
LA	1,800	1,800	3,000
MS	1,014	2,194	696
NM	16,280	42,300	47,680
NC	276	855	1,500
OK	495	2,280	244
SC	1,260	1,764	992
TX	24,000	34,520	26,000
US	113,749	189,226	150,908
Native and Seedling			
AL	2,160	3,108	1,011
AR	280	1,449	220
FL	770	720	825
GA	4,520	13,593	5,550
KS	196	2,814	44
LA	5,600	4,800	7,800
MS	741	816	264
NC	188	390	800
OK	780	17,600	1,224
SC	371	854	306
TX	5,000	23,850	8,500
US	20,606	69,994	26,544
All Pecans			
AL	6,360	8,428	4,350
AZ	10,540	23,125	20,670
AR	1,080	2,349	565
CA	1,079	3,960	2,822
FL	1,095	1,320	1,045
GA	56,200	83,201	48,950
KS	196	2,814	44
LA	7,400	6,600	10,800
MS	1,755	3,010	960
NM	16,280	42,300	47,680
NC	464	1,245	2,300
OK	1,275	19,880	1,468
SC	1,631	2,618	1,298
TX	29,000	58,370	34,500
US	134,355	259,220	177,452

¹ Budded, grafted, or topworked varieties.

Definition of Terms

Apples, Commercial Crop is orchards of 100 or more bearing age trees.

Bearing Acreage is determined by the mature fruit area in a given orchard. Bearing age is a function of many factors including variety, rootstock, year planted, etc. It is primarily based on periodic orchard surveys. In non-survey years, acreage is based on trends, county extension service data, end-of-year production surveys, and other indications.

Prices are a marketing year average for all methods of sale. For a crop sold for both fresh market and processing, the **Marketing Year Average Price (MYA)** is a weighted average of the fresh and processing price.

Prices for fresh fruit are the average prices producers receive at the point of first sale. This is commonly referred to as the **average price as sold**. Since the point of first sale is not the same for all producers, prices for the various methods of sale are weighted by the proportionate quantity sold. For example, if in a given State part of the fruit is sold F.O.B. packed by growers, part is sold as bulk fruit at the packinghouse door, and some is sold retail at roadside stands, the fresh fruit **average price as sold** is a weighted average of the average price for each method of sale. The exception is fresh fruit sales in California, Washington, New York (apples only) and Oregon (except peaches) which are equivalent returns at packinghouse door. The equivalent packinghouse returns represent adjusted prices.

F.O.B. packed prices are adjusted to an equivalent incoming packinghouse door price by subtracting all costs that accumulate between the incoming packinghouse door and the F.O.B. price. These costs include grading, packing, inspecting fees, selling, and other costs.

Prices for fruit sold for processing are equivalent returns for fruit delivered to the processing plant door except for cranberries and California olives and clingstone peaches which are priced at the first delivery point.

Crop value estimates in this report cover the marketing season or crop year and should not be confused with cash receipts from these crops which are on a calendar year.

Total Production is the quantity actually harvested plus quantities which would have been acceptable for fresh market or processing but were not harvested because of economic or natural reasons.

Unutilized Production is the difference between total and utilized production which is fruit not harvested for economic or natural reasons and harvested fruit not sold or utilized.

Utilization refers to first utilization, not necessarily final utilization. For example, frozen fruit includes some fruit that may be later used for making preserves. Grade-outs for fresh market fruit which are processed are included in the processing quantity. Fruit graded-out from canning or freezing and utilized for juice is included with juice.

Utilized Production is the amount sold plus the quantities used at home or held in storage.

Yield per Acre is based on total production which includes unharvested production and fruit harvested but not sold due to marketing conditions.

State Value of Sales Computation Procedure

The following procedure is used to compute State values for all commodity groups:

Fresh Market Value = Fresh Market MYA
Times
Fresh Market Utilization

Process Market Value = Process Market MYA
Times
Process Market Utilization

"All" Sales Value = Fresh Market Value
Plus
Process Market Value

"All" Sales MYA = "All" Sales Value
Divided By
"All" Sales Utilization

For commodities with components not identified by market channel, substitute breakdown name for fresh/processing market and use the same procedure.

U.S. MYA Computation Procedure

The procedure used for computation of U.S. Marketing Year Average Prices follows:

Fresh Market MYA = Fresh Market Value For All States
Divided By
Fresh Market Utilization For All States

Process Market MYA = Process Market Value For All States
Divided By
Process Market Utilization For All States

"All" Sales MYA = Sales Value For All States
Divided By
Sales Utilization For All States

Marketing Seasons for Noncitrus Fruits ¹

Apples: All South Atlantic States, Kentucky, Tennessee, Indiana, Illinois, Missouri, Arkansas, New Mexico, and California, June 1 to May 31; all other States, July 1 to June 30, except Washington and Oregon where the bulk of the crop is marketed August 1 to July 31.

Apricots: **Fresh Fruit** - May 25 to August 20.
Canning - June 15 to August 15.
Dried - California, June 20 to August 20.

Avocados: California - November 1 to November 30 of the following year.
Florida - June 20 to Feb 28.
Hawaii - January 1 to December 31 with peak harvest from March 1 to April 30.

Bananas: January 1 to December 31.

Cherries: **Fresh Fruit** - Sweet varieties, May 1 to August 15;
Tart varieties, June 15 to August 20.

Cranberries: September 5 to December 20.

Dates: August 15 to March 15.

Figs: **Fresh Fruit** - June 5 to October 30.
Canning - August 1 to October 15.
Dried - California, June 20 to October 31.

Grapes: **Fresh Fruit** - California, May 25 to April 30;
Arizona, June 5 to July 15;
All other States, July 10 to October 31.

Crushed for Juice, Wine and Brandy - August 1 to December 15.
Dried for Raisins - California, September 1 to May 30.

Guavas: January 1 to December 31 with peak harvest from September 1 to October 31.

Kiwifruit: November 1 to April 30.

Nectarines: June 10 to August 31.

Olives: September 25 to March 15.

¹ See footnote at end of table.

Marketing Seasons for Noncitrus Fruits ¹ (continued)

Papayas: January 1 to December 31 with peak harvest from May 15 to July 15 and September 15 to December 15.

Peaches: **Fresh Fruit** - Georgia and South Carolina, May 20 to August 31; Other South Atlantic States, South Central States, and California, June 1 to September 30; New England States, New York, Michigan, and Idaho, August 1 to September 30; all other States, July 1 to September 30.

Canning - California, July 1 to September 10.

Dried - California, August 1 to October 10.

Pears: **Fresh Fruit** - California, July 1 to April 30; Washington and Oregon, August 10 to May 31; Other States, July 1 to December 15.

Canning and Dried - California, Washington and Oregon, August 1 to November 30.

Pineapples: January 1 to December 31 with peak harvest from March 1 to July 31.

Plums: **Fresh Fruit** - California, May 25 to September 30.

Canning - California, June 1 to September 30.

Prunes: **Dried** - California, August 1 to April 31.

Prunes and Plums: **Fresh Fruit and Canning** - Idaho, Michigan, Oregon and Washington, August 10 to October 20.

Marketing Seasons for Tree Nuts ¹

Almonds: August 5 to November 15.

Filberts (Hazelnuts): October 1 to September 30.

Macadamia Nuts: January 1 to December 31 with peak harvest from August 1 to December 31.

Pecans: September 30 to March 15.

Pistachios: September 1 to October 31.

Walnuts: September 15 to December 30.

¹ For detail by States, see Agricultural Handbook No. 186, "Fruits and Tree Nuts, Blooming, Harvesting, and Marketing Dates", Dec 1975.

Information Contacts

Listed below are the commodity specialists in the Crops Branch of the National Agricultural Statistics Service to contact for additional information.

C. Ray Halley, Chief (202) 720-2127

Field Crops Section

Brad Parks, Head (202) 720-3843
Jerry Ramirez - Soybeans, Minor Oilseeds (202) 720-7369
Rhonda Brandt - Corn (202) 720-9526
Herman Ellison - Peanuts, Rice, Barley (202) 720-7688
Lance Honig - Hay, Sorghum (202) 690-3234
Jay Johnson - Cotton, Cotton Ginnings (202) 720-5944
Mark E. Miller - Oats, Sugar Crops, Weekly Crop Weather (202) 720-7621
Vaughn Siegenthaler - Wheat, Rye (202) 720-8068

Fruit, Vegetable & Special Crops Section

Dean Groskurth, Head (202) 720-3843
Arvin Budge - Potatoes, Sweet Potatoes (202) 720-4285
Dave DeWalt - Citrus, Tropical Fruits (202) 720-5412
Steve Gunn - Apples, Cherries, Cranberries, Prunes, Plums (202) 720-4488
Howard Hill - Berries, Grapes, Maple Syrup, Tobacco (202) 720-7235
Dave Ranek - Nuts, Floriculture (202) 720-4215
Jeffrey Kissel - Noncitrus Fruits, Mint, Dry Beans & Peas,
Mushrooms (202) 690-0270
Biz Wallingsford - Fresh and Processing Vegetables, Onions,
Strawberries (202) 720-2157
Harry Nishimoto - Hops (360) 902-1940

The next "Noncitrus Fruits and Nuts 1999 Preliminary Summary" report will be released at 3 p.m. ET on January 20, 2000.

Index

	Page
Noncitrus Fruits and Tree Nuts	
Bearing Acreage, U.S.	5
Bearing Acreage and Yield per Acre by Crop	2
Price and Value by Crop	4
Production Utilization, U.S.	5
Total and Utilized Production by Crop	3
Noncitrus Fruits	
Apples, Commercial Crop	8, 59
Apricots	17, 23, 24, 61
Avocados	17
Bananas	57
Berries (excluding strawberries)	29, 59
California Dry Fruits	24
Cherries, Sweet	33, 61
Cherries, Tart	35, 60
Cranberries	38
Dates	17
Figs	19, 23, 24
Grapes	24, 40, 61
Guavas	57
Hawaii Crops	57
Kiwifruit	19, 61
Nectarines	19
Olives	19, 23
Papayas	57
Peaches	24, 51, 60
Pears	24, 47, 61
Pineapples	57
Plums	19
Prunes (dried basis)	21
Prunes and Plums	21, 23, 61
Strawberries	25
Unutilized Production59
Tree Nuts	
Almonds	62
Hazelnuts	62
Macadamia Nuts	62
Pecans	64, 66
Pistachios	62
Walnuts	62
Definition of Terms	68
Information Contacts	72
Marketing Seasons	70
State Value of Sales Computation	69
U.S. MYA Computation	69

The United States Department of Agriculture (USDA) prohibits discrimination in all its programs on the basis of race, color, national origin, gender, religion, age, disability, political beliefs, sexual orientation, and marital or family status. (Not all prohibited bases apply to all programs.) Persons with disabilities who require alternative means for communication of program information (braille, large print, audiotape, etc.) should contact the USDA's TARGET Center at 202-720-2600 (voice and TDD).

To file a complaint of discrimination, write USDA, Director, Office of Civil Rights, Room 326-W, Whitten Building, 14th and Independence Avenue, SW, Washington, D.C., 20250-9410, or call 202-720-5964 (voice or TDD). USDA is an equal opportunity provider and employer.

ACCESS TO REPORTS!!

For your convenience, there are several ways to obtain NASS reports, data products, and services:

INTERNET ACCESS

All NASS reports are available free of charge on the worldwide Internet. For access, connect to the Internet and go to the NASS Home Page at: <http://www.usda.gov/nass/>. Select "Today's Reports" or Publications and then Reports by Calendar or Publications and then Search, by Title or Subject.

E-MAIL SUBSCRIPTION

There are two options for subscribing via e-mail. All NASS reports are available by subscription free of charge direct to your e-mail address. 1) Starting with the NASS Home Page at <http://www.usda.gov/nass/>, click on **Publications**, then click on the **Subscribe by E-mail** button which takes you to the page describing e-mail delivery of reports. Finally, click on **Go to the Subscription Page** and follow the instructions. 2) If you do NOT have Internet access, send an e-mail message to: usda-reports@usda.mannlib.cornell.edu. In the body of the message type the word: **list**.

AUTOFAX ACCESS

NASSFax service is available for some reports from your fax machine. Please call 202-720-2000, using the handset attached to your fax. Respond to the voice prompts. Document 0411 is a list of available reports.

PRINTED REPORTS OR DATA PRODUCTS

CALL OUR TOLL-FREE ORDER DESK: 800-999-6779 (U.S. and Canada)
Other areas, please call 703-834-0125 FAX: 703-834-0110
(Visa, MasterCard, check, or money order acceptable for payment.)

ASSISTANCE

For **assistance** with general agricultural statistics or further information about NASS or its products or services, contact the **Agricultural Statistics Hotline** at **800-727-9540**, 7:30 a.m. to 4:00 p.m. ET, or e-mail: nass@nass.usda.gov.