



United States
Department of
Agriculture

National
Agricultural
Statistics
Service



Fr Nt 1-3 (00)a

Noncitrus Fruits and Nuts 1999 Summary

July 2000

USDA



Due to technical difficulties there were changes to the Noncitrus Fruits and Nuts 1999 Summary released on July 7. The updated version of the Noncitrus Fruits and Nuts 1999 Summary is now available. Please discard any paper or electronic copies you may have of the original report and use the new version's data.

1999 Noncitrus Utilized Production Up 5 Percent, Record Value Up 14 Percent from 1998

In 1999, the Nation's utilized production of the leading noncitrus fruit crops totaled 17.3 million tons, up 5 percent from 1998's production. Utilized production increased from last year for all crops except apples, apricots, blackberries, tart cherries, dates, figs, guavas, kiwifruit, and prunes and plums. Grape utilized production accounted for just over half of the increase from 1998.

Value of utilized production for noncitrus fruit crops totaled a record 8.28 billion dollars, up 14 percent from 1998. The value of apple, grape, and peach production increased by 17 percent, 14 percent, and 4 percent, respectively. Strawberries showed an increase of 12 percent.

Highlights

Utilized Apple production for 1999 was estimated at 10.4 billion pounds, 3 percent less than 1998. Production in Eastern States increased as a result of favorable spring growing conditions but was more than offset by production decreases in Washington, Colorado, and Idaho.

Utilized grape production for 1999 totaled 6.23 million tons, up 7 percent from 1998's crop but 15 percent below the 1997 record crop. California production was up 5 percent from last year, with raisin, table, and wine type production increasing 2 percent, 18 percent, and 4 percent, respectively. Utilized production increased in all states except Arizona. Arizona declined for the second year in a row, 9 percent below the 1998 crop and 16 percent below the 1997 crop.

Utilized peach production in 1999 was estimated at 2.43 billion pounds, up 5 percent from last year but 3 percent below 1997. The California crop, accounting for 74 percent of the U.S. peach production, was up 5 percent from 1998.

Utilized pear production, at 1.02 million tons, was up 5 percent from last year's crop. Washington and California, the top producing states, were up 10 percent, and 11 percent respectively. Utilized pear production in Oregon, the third largest producing State, was down 8 percent from 1998.

U.S. Nut Production and Value Show Increases

The 1999 U.S. nut production (in-shell basis) rose sharply to 1,283 tons, a 41 percent increase from a year earlier. A record pecan crop of 406 million pounds was realized in 1999, 177 percent over 1998. Almonds also set a new record, totaling 830 million pounds, up 43 percent. Hazelnuts produced 38,000 tons, up 145 percent from the previous year. Walnut production totaled 283,000 tons, a 25 percent increase. Pistachios, at 123 million pounds, were down 35 percent, and macadamia production, at 56.5 million pounds, was off 2 percent.

The 1999 U.S. value of utilized production increased 9 percent to 1.49 billion dollars. Hazelnut value rose 127 percent, to 33.9 million dollars, despite a lower average price. The record pecan crop accounted for an 86 percent increase in value even though average prices for improved and native seedling nuts were off sharply. Almonds, with 693 million dollars, were off 1 percent but contributed 47 percent of the total nut value.

**Noncitrus Fruits and Nuts: Bearing Acreage and Yield per Acre
by Crop United States, 1997-99**

Crop	Bearing Acreage			Yield per Acre		
	1997	1998	1999	1997	1998	1999
	<i>Acres</i>	<i>Acres</i>	<i>Acres</i>	<i>Tons</i>	<i>Tons</i>	<i>Tons</i>
Noncitrus Fruits						
Apples	467,950	467,600	461,500	11.00	12.50	11.50
Apricots	21,400	21,380	20,380	6.51	5.54	4.44
Avocados	66,050	65,640	65,130	2.70	2.43	2.78
Bananas (HI) ¹	950	1,420	1,420	7.26	7.39	8.66
Blackberries (OR) ^{1 2}	5,510	5,550	5,750	3.97	3.51	3.32
Blueberries ^{1 2}	38,670	38,800	39,330	2.16	1.91	2.24
Boysenberries ¹	1,620	1,610	1,700	2.95	2.48	2.88
Loganberries (OR) ¹	90	70	80	1.84	2.00	2.38
Raspberries ¹						
Black (OR)	1,100	1,060	1,100	0.96	1.23	1.36
Red	12,100	12,300	12,500	3.18	3.03	3.32
All (CA)	1,700	1,700	1,800	4.27	4.35	5.78
Cherries, Sweet	56,640	57,290	58,400	3.99	3.69	3.92
Cherries, Tart	40,330	40,320	39,900	3.63	4.32	3.21
Cranberries	35,700	36,600	37,200	7.70	7.44	8.59
Dates (CA)	4,800	4,900	4,900	4.38	5.08	4.53
Figs (CA)	16,400	16,300	15,000	3.51	3.15	2.99
Grapes	835,270	856,170	904,660	8.73	6.80	6.89
Guavas (HI) ¹	730	710	630	10.90	10.30	8.50
Kiwifruit (CA)	5,300	5,300	5,300	6.60	6.91	5.09
Nectarines (CA)	36,000	35,500	35,500	7.33	6.31	7.72
Olives (CA)	35,300	35,300	35,300	2.95	2.55	4.11
Papayas (HI) ¹	1,985	2,120	1,940	9.77	9.43	10.90
Peaches	157,750	160,340	157,380	8.32	7.49	8.03
Pears	66,880	66,180	66,120	15.60	14.70	15.40
Pineapples (HI) ³	19,900	21,000	21,000			
Plums (CA)	42,000	42,000	41,500	5.86	4.48	4.72
Prunes (CA)	82,000	83,000	83,000	7.99	4.16	6.22
Prunes & Plums ⁴	4,720	4,470	4,210	5.40	5.73	5.53
Strawberries ¹	44,260	45,230	45,560	18.40	18.10	19.90
Total	2,103,105	2,129,860	2,168,190			
Tree Nuts						
Almonds (CA) ⁵	442,000	460,000	480,000	1.37	1.02	1.39
Hazelnuts	29,000	29,530	29,200	1.62	0.52	1.30
Macadamias (HI)	19,200	19,200	18,900	1.51	1.50	1.49
Pecans ⁶						
Pistachios (CA)	65,400	68,000	71,000	1.38	1.38	0.87
Walnuts (CA)	193,000	193,000	191,000	1.39	1.18	1.48
Total	748,600	769,730	790,100			

¹ Harvested acreage. Yield based on utilized production.

² Cultivated.

³ Acreage is total acres in crop, not harvested acreage. Yield is not estimated.

⁴ ID, MI, OR, and WA.

⁵ Yield based on in-shell basis. Shelling ratios are 1997-.625; 1998-.554; 1999-.620.

⁶ Bearing acreage and yield not calculated.

**Noncitrus Fruits and Nuts: Total and Utilized Production
by Crop, United States, 1997-99**

Crop	Total Production			Utilized Production		
	1997	1998	1999	1997	1998	1999
	<i>1,000 Tons Fresh Equivalent</i>	<i>1,000 Tons Fresh Equivalent</i>	<i>1,000 Tons Fresh Equivalent</i>	<i>1,000 Tons Fresh Equivalent</i>	<i>1,000 Tons Fresh Equivalent</i>	<i>1,000 Tons Fresh Equivalent</i>
Noncitrus Fruits						
Apples	5,161.9	5,823.2	5,289.8	5,127.2	5,381.3	5,195.8
Apricots	139.2	118.5	90.5	129.6	108.1	90.5
Avocados	178.3	159.3	181.3	178.3	159.3	181.3
Bananas (HI) ¹				6.9	10.5	12.3
Blackberries (OR) ²	21.8	19.5	19.1	21.8	19.5	19.1
Blueberries ²	85.0	76.5	90.1	83.3	74.1	88.0
Boysenberries	4.8	4.0	4.9	4.8	4.0	4.9
Loganberries (OR)	0.2	0.1	0.2	0.2	0.1	0.2
Raspberries						
Black (OR)	1.1	1.3	1.5	1.1	1.3	1.5
Red	41.9	39.8	42.4	38.5	37.3	41.4
All (CA)	7.2	7.4	10.4	7.2	7.4	10.4
Cherries, Sweet	225.8	211.4	229.1	223.5	208.4	227.8
Cherries, Tart	146.5	174.1	128.1	141.7	152.8	127.1
Cranberries	274.9	272.2	319.5	274.9	272.2	319.5
Dates (CA)	21.0	24.9	22.2	21.0	24.9	22.2
Figs (CA)	57.5	51.3	44.9	57.5	51.3	44.9
Grapes	7,290.9	5,820.0	6,230.4	7,287.4	5,816.4	6,228.8
Guavas (HI) ¹				8.0	7.3	5.4
Kiwifruit (CA)	35.0	36.6	27.0	31.8	33.0	24.0
Nectarines (CA)	264.0	224.0	274.0	264.0	224.0	274.0
Olives (CA)	104.0	90.0	145.0	104.0	90.0	145.0
Papayas (HI) ¹				19.4	20.0	21.2
Peaches	1,312.3	1,200.4	1,262.7	1,254.2	1,162.8	1,216.6
Pears	1,042.5	970.1	1,020.5	1,041.9	967.8	1,018.4
Pineapples (HI) ¹				324.0	332.0	352.0
Plums (CA)	246.0	188.0	196.0	246.0	188.0	196.0
Prunes (CA)	654.8	345.6	516.2	627.3	329.6	478.5
Prunes & Plums ³	25.5	25.6	23.3	23.7	24.8	22.0
Strawberries	814.4	820.1	906.6	813.9	819.9	906.3
Total				18,363.1	16,528.1	17,275.1
	<i>1,000 Tons In-Shell Equivalent</i>	<i>1,000 Tons In-Shell Equivalent</i>	<i>1,000 Tons In-Shell Equivalent</i>	<i>1,000 Tons In-Shell Equivalent</i>	<i>1,000 Tons In-Shell Equivalent</i>	<i>1,000 Tons In-Shell Equivalent</i>
Tree Nuts ¹						
Almonds (CA)				607.2	469.3	669.4
Hazelnuts				47.0	15.5	38.0
Macadamias (HI)				29.0	28.8	28.3
Pecans				167.5	73.2	203.1
Pistachios (CA)				90.0	94.0	61.5
Walnuts (CA)				269.0	227.0	283.0
Total				1,209.7	907.8	1,283.3

¹ Only utilized production estimated.

² Cultivated.

³ ID, MI, OR, and WA.

**Noncitrus Fruits and Nuts: Price and Value
by Crop, United States, 1997-99**

Crop ¹	Unit	Price			Value of Utilized Production		
		1997	1998	1999	1997	1998	1999
		<i>Dollars</i>	<i>Dollars</i>	<i>Dollars</i>	<i>1,000 Dollars</i>	<i>1,000 Dollars</i>	<i>1,000 Dollars</i>
Noncitrus Fruits							
Apples	Lb	0.154	0.122	0.148	1,575,403	1,316,172	1,534,271
Apricots	Ton	332.00	327.00	391.00	43,072	35,358	35,377
Avocados	Ton	1,560.00	2,160.00	2,160.00	277,754	343,730	391,911
Bananas (HI)	Lb	0.380	0.350	0.350	5,206	7,350	8,575
Blackberries(OR) ²	Lb	0.403	0.448	0.690	17,590	17,425	26,287
Blueberries ²	Lb	0.831	0.725	0.886	138,490	107,494	156,005
Boysenberries	Lb	0.579	0.525	0.706	5,537	4,174	6,917
Loganberries (OR)	Lb	1.190	0.864	1.030	394	242	392
Raspberries							
Black (OR)	Lb	1.900	2.100	1.890	4,000	5,465	5,486
Red	Lb	0.489	0.391	0.698	37,665	29,101	57,823
All (CA)	Lb	1.390	1.920	1.470	20,225	28,470	30,604
Cherries,							
Sweet	Ton	1,250.00	1,090.00	1,090.00	278,511	226,236	248,493
Tart	Lb	0.159	0.145	0.209	44,911	44,186	53,218
Cranberries ³	Bbl	63.70	38.80		350,147	211,301	
Dates (CA)	Ton	1,100.00	1,220.00	1,240.00	23,100	30,378	27,528
Figs (CA)	Ton	265.00	226.00	278.00	15,209	11,611	12,477
Grapes	Ton	429.00	455.00	483.00	3,126,433	2,644,035	3,010,716
Guavas (HI)	Lb	0.122	0.122	0.091	1,940	1,781	974
Kiwifruit (CA)	Ton	518.00	744.00	634.00	16,483	24,544	15,215
Nectarines (CA)	Ton	375.00	471.00	411.00	98,895	105,466	112,497
Olives (CA)	Ton	642.00	459.00	452.00	66,801	41,331	65,564
Papayas (HI)	Lb	0.489	0.316	0.376	18,978	12,589	15,929
Peaches	Lb	0.177	0.192	0.190	444,137	446,534	463,394
Pears	Ton	276.00	291.00	294.00	287,822	281,611	298,944
Pineapples (HI)	Ton	283.00	279.00	288.00	91,721	92,776	101,448
Plums (CA)	Ton	312.00	529.00	419.00	76,825	99,388	82,041
Prunes (CA)	Ton	883.00	764.00	906.00	181,015	78,692	149,490
Prunes & Plums ⁴	Ton	273.00	311.00	206.00	6,481	7,707	4,529
Strawberries	Cwt	55.50	61.10	61.70	903,350	1,001,854	1,118,401
Total ⁵					8,158,095	7,257,001	8,282,399
Almonds (CA)							
(Shelled)	Lb	1.56	1.41	0.87	1,160,640	703,590	693,216
Hazelnuts	Ton	899.00	964.00	891.00	42,267	14,942	33,861
Macadamias (HI)	Lb	0.750	0.650	0.670	43,500	37,375	37,855
Pecans	Lb	0.774	1.210	0.814	259,220	177,452	330,398
Pistachios (CA)	Lb	1.13	1.03	1.31	203,400	193,640	161,130
Walnuts (CA)	Ton	1,430.00	1,050.00	810.00	384,670	238,350	229,230
Total ⁵					2,093,697	1,365,349	1,485,690

¹ Ton refers to the 2,000 lb. short ton.

² Cultivated.

³ Estimates for 1999 will be published on August 15, 2000.

⁴ ID, MI, OR, and WA.

⁵ Includes estimated 1999 value of production for cranberries. Used 1998 price to compute the 1999 value.

**Fruits and Nuts: Bearing Acreage,
United States, 1997-99**

Year	Citrus Fruits ¹	Major Deciduous Fruits ²	Miscellaneous Noncitrus ³	Nuts ⁴	Total
	<i>Acres</i>	<i>Acres</i>	<i>Acres</i>	<i>Acres</i>	<i>Acres</i>
1997	1,152,500	1,810,940	292,165	748,600	4,004,205
1998	1,125,300	1,834,250	295,610	769,730	4,024,890
1999	1,111,500	1,872,550	295,640	790,100	4,069,790

¹ Grapefruit, K-Early Citrus, lemons, limes, oranges, tangelos, tangerines, and Temples.

² Commercial apples, apricots, cherries, grapes, nectarines, peaches, pears, plums, and prunes.

³ Avocados, bananas, berries, cranberries, dates, figs, guavas, kiwifruit, olives, papayas, pineapples, and strawberries.

⁴ Almonds, hazelnuts, macadamia nuts, pistachios, and walnuts.

**Noncitrus Fruits: Production Utilization,
United States, 1997-99 ¹**

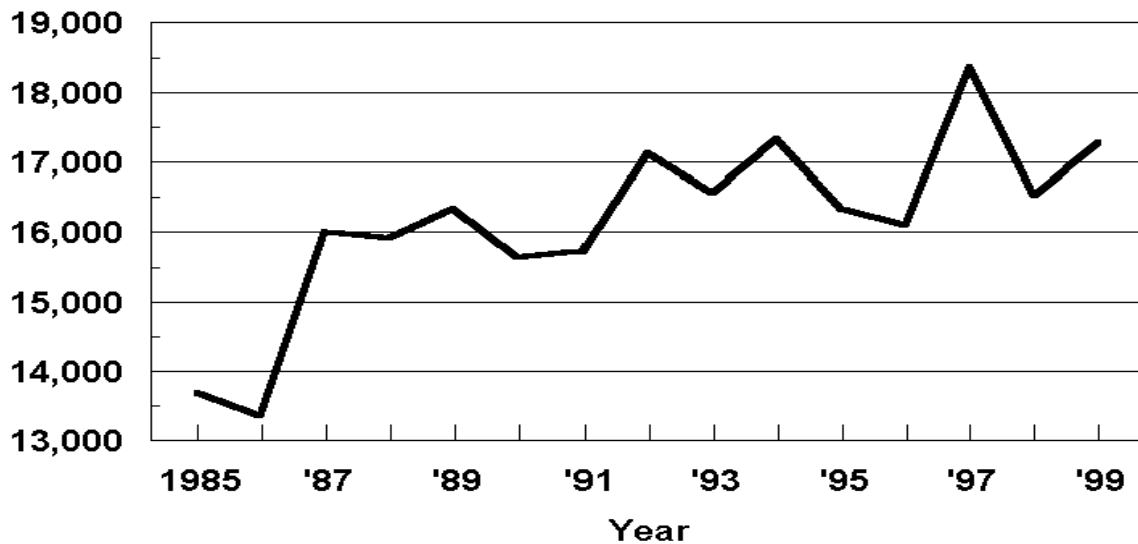
Year	Utilized Production	Fresh	Processed ²					
			Canned	Dried	Juice	Frozen	Wine	Other
	<i>1,000 Tons</i>	<i>1,000 Tons</i>	<i>1,000 Tons</i>	<i>1,000 Tons</i>	<i>1,000 Tons</i>	<i>1,000 Tons</i>	<i>1,000 Tons</i>	<i>1,000 Tons</i>
1997	18,363.1	6,643.1	2,130.2	2,659.8	1,674.5	699.3	4,034.5	246.8
1998	16,528.1	6,511.9	1,846.9	1,911.0	1,785.6	678.8	3,314.9	207.8
1999	17,275.1	6,650.0	2,048.7	2,150.2	1,880.2	664.5	3,350.4	212.4

¹ Cranberry quantity included in utilized production, excluded from fresh and processed breakdown.

² Processed strawberries are included in frozen.

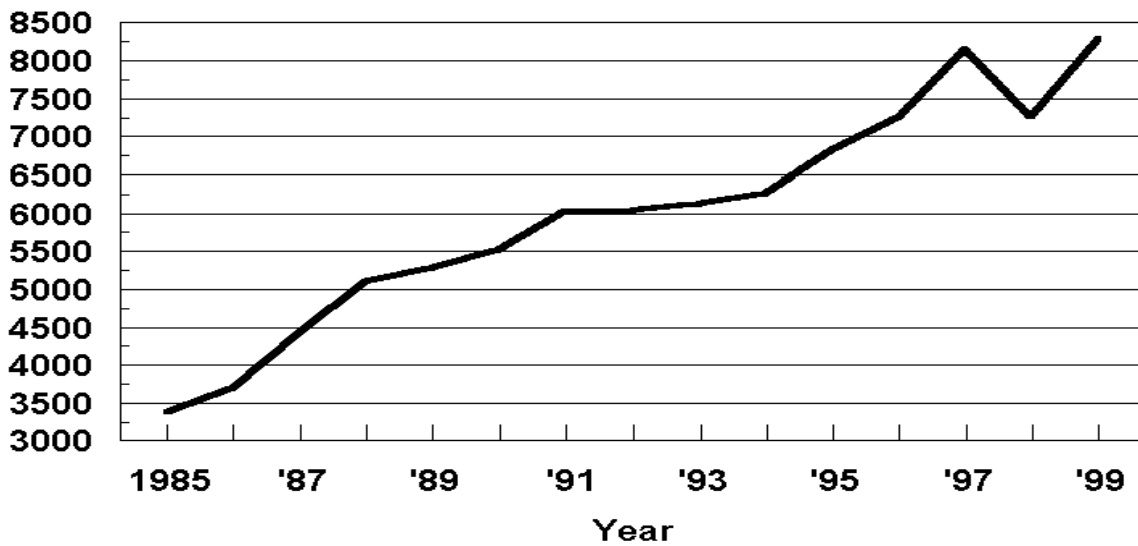
U.S. Noncitrus Fruits Utilized Production

1,000 Tons Fresh Equivalent



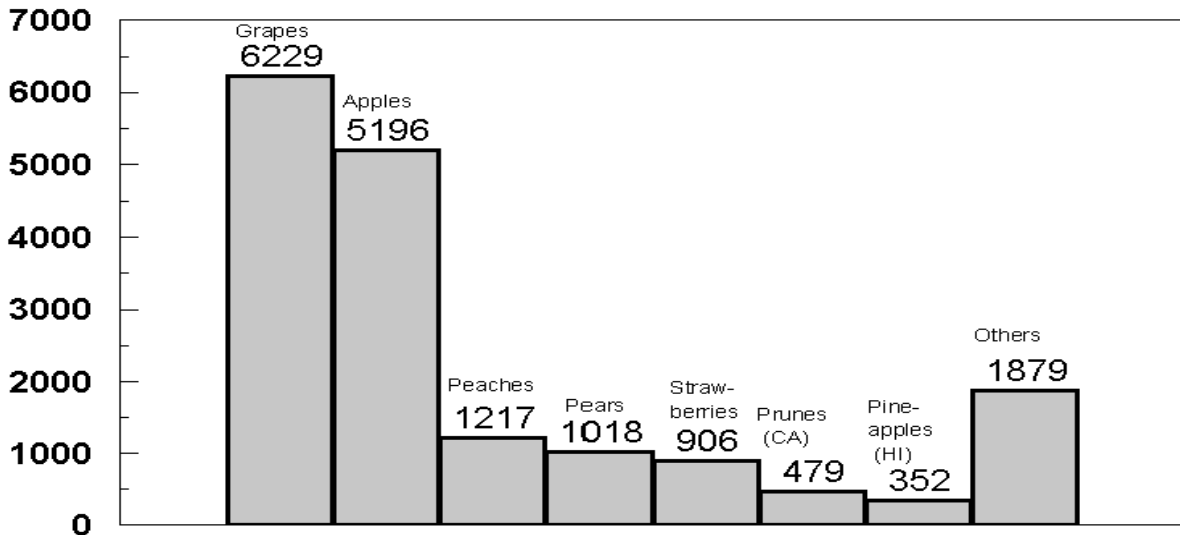
U.S. Noncitrus Fruits Value of Utilized Production

Million Dollars



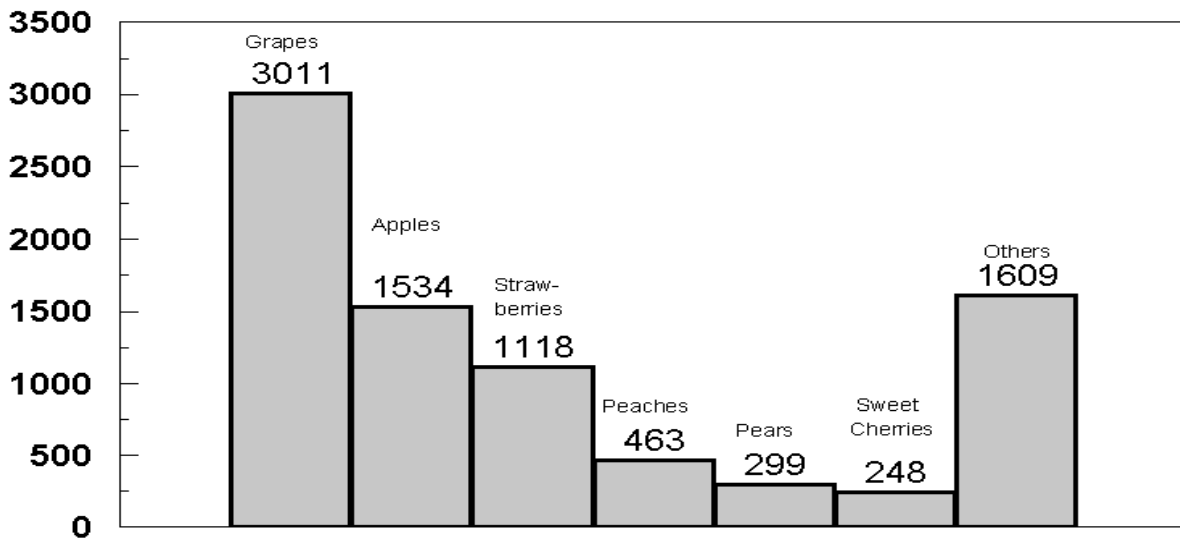
U.S. Noncitrus Fruits Utilized Production by Major Fruit, 1999

(000) Tons Fresh Equivalent



U.S. Noncitrus Fruits Value of Utilized Production by Major Fruit, 1999

Million Dollars



**Apples, Commercial: Bearing Acreage and Yield
by State and United States, 1997-99**

State	Bearing Acreage			Yield per Acre ¹		
	1997	1998	1999	1997	1998	1999
	<i>Acres</i>	<i>Acres</i>	<i>Acres</i>	<i>Pounds</i>	<i>Pounds</i>	<i>Pounds</i>
AZ	3,700	3,800	3,900	12,200	12,100	8,790
AR	900	900	900	8,000	5,000	6,000
CA	38,500	37,000	35,000	25,000	23,200	23,600
CO	3,200	3,000	2,800	10,900	21,700	2,860
CT	2,400	2,400	2,400	10,000	7,290	9,580
GA	1,400	1,400	1,300	10,700	7,860	9,230
ID	6,600	6,600	5,400	16,700	23,500	13,000
IL	5,000	5,000	5,000	14,800	9,000	11,700
IN	4,000	4,000	4,000	12,500	13,500	15,100
IA	1,800	1,700	1,700	7,220	5,120	6,470
KS	650	600	550	11,500	2,670	13,100
KY	1,500	1,400	1,300	4,330	7,860	6,920
ME	4,700	4,700	4,700	13,600	9,470	15,300
MD	2,800	2,600	2,700	16,400	13,300	14,100
MA	5,250	5,250	5,250	11,400	6,100	12,400
MI	54,000	54,000	52,500	18,500	18,500	23,000
MN	2,800	2,800	2,900	7,860	8,500	8,590
MO	3,800	3,800	3,800	13,900	8,950	12,900
NH	2,950	2,950	2,900	13,700	6,440	15,000
NJ	3,500	3,500	3,300	15,700	15,700	15,200
NM	1,800	1,800	1,800	3,890	4,440	1,110
NY	55,000	55,000	55,000	20,400	19,500	22,900
NC	9,500	9,500	9,000	16,000	19,500	21,100
OH	7,900	7,900	7,700	7,590	10,100	13,000
OR	8,700	8,700	8,700	18,400	20,700	17,200
PA	23,000	23,000	23,000	23,300	17,200	22,000
RI	300	300	300	12,000	8,670	12,000
SC	2,900	2,700	2,400	20,700	16,700	13,300
TN	1,400	1,400	1,100	7,140	8,930	8,640
UT	2,800	2,800	2,800	15,000	16,100	3,210
VT	3,700	3,700	3,900	13,500	9,460	15,400
VA	17,000	17,000	17,000	15,900	16,500	21,200
WA	170,000	172,000	172,000	29,400	38,400	29,100
WV	8,000	8,000	8,000	14,400	13,800	18,100
WI	6,500	6,400	6,500	7,620	11,900	11,900
US	467,950	467,600	461,500	22,100	24,900	22,900

¹ Yield is based on total production, which includes unharvested production and fruit harvested but not sold due to market conditions.

**Apples, Commercial: Total and Utilized Production
by State and United States, 1997-99**

State	Total Production			Utilized Production		
	1997	1998	1999	1997	1998	1999
	<i>Million Pounds</i>	<i>Million Pounds</i>	<i>Million Pounds</i>	<i>Million Pounds</i>	<i>Million Pounds</i>	<i>Million Pounds</i>
AZ	45.0	46.0	34.3	44.1	45.0	32.0
AR	7.2	4.5	5.4	7.1	3.6	4.2
CA	962.0	860.0	825.0	962.0	860.0	825.0
CO	35.0	65.0	8.0	34.0	59.0	8.0
CT	24.0	17.5	23.0	23.0	17.0	22.0
GA	15.0	11.0	12.0	14.0	8.0	11.0
ID	110.0	155.0	70.0	110.0	115.0	70.0
IL	74.0	45.0	58.5	67.0	35.0	42.5
IN	50.0	54.0	60.3	48.0	50.0	54.8
IA	13.0	8.7	11.0	7.5	8.1	11.0
KS	7.5	1.6	7.2	6.4	0.9	5.2
KY	6.5	11.0	9.0	5.8	9.0	7.0
ME	64.0	44.5	72.0	62.0	43.0	61.0
MD	46.0	34.6	38.0	44.5	34.0	38.0
MA	60.0	32.0	65.0	58.5	29.5	57.0
MI	1,000.0	1,000.0	1,210.0	1,000.0	960.0	1,190.0
MN	22.0	23.8	24.9	17.5	18.7	19.3
MO	53.0	34.0	49.0	50.5	29.0	46.0
NH	40.5	19.0	43.5	40.0	19.0	42.0
NJ	55.0	55.0	50.0	55.0	54.0	50.0
NM	7.0	8.0	2.0	7.0	8.0	2.0
NY	1,120.0	1,070.0	1,260.0	1,120.0	960.0	1,230.0
NC	152.0	185.0	190.0	150.0	135.0	170.0
OH	60.0	80.0	100.0	60.0	75.0	91.0
OR	160.0	180.0	150.0	160.0	143.0	145.0
PA	535.0	395.0	505.0	525.0	388.0	505.0
RI	3.6	2.6	3.6	3.4	2.2	2.9
SC	60.0	45.0	32.0	56.0	42.0	30.0
TN	10.0	12.5	9.5	8.5	9.0	8.0
UT	42.0	45.0	9.0	41.0	31.0	9.0
VT	50.0	35.0	60.0	49.0	33.5	52.0
VA	270.0	280.0	360.0	262.0	269.0	350.0
WA	5,000.0	6,600.0	5,000.0	5,000.0	6,100.0	5,000.0
WV	115.0	110.0	145.0	110.0	107.0	140.0
WI	49.5	76.1	77.4	45.5	62.0	60.6
US	10,323.8	11,646.4	10,579.6	10,254.3	10,762.5	10,391.5

**Apples, Commercial: Price and Value by State
by State and United States, 1997-99**

State	Price per Pound			Value of Utilized Production		
	1997	1998	1999	1997	1998	1999
	<i>Dollars</i>	<i>Dollars</i>	<i>Dollars</i>	<i>1,000 Dollars</i>	<i>1,000 Dollars</i>	<i>1,000 Dollars</i>
AZ	0.107	0.147	0.127	4,724	6,628	4,054
AR	0.289	0.227	0.238	2,053	816	1,001
CA	0.169	0.153	0.146	162,655	131,340	120,696
CO	0.151	0.119	0.218	5,138	7,031	1,740
CT	0.312	0.335	0.276	7,170	5,701	6,078
GA	0.137	0.161	0.174	1,922	1,289	1,919
ID	0.139	0.085	0.171	15,290	9,793	11,960
IL	0.196	0.186	0.214	13,103	6,500	9,109
IN	0.218	0.242	0.234	10,469	12,123	12,834
IA	0.286	0.286	0.319	2,148	2,317	3,514
KS	0.185	0.256	0.277	1,186	230	1,442
KY	0.261	0.284	0.293	1,512	2,556	2,051
ME	0.193	0.218	0.202	11,992	9,390	12,335
MD	0.200	0.178	0.094	8,915	6,068	3,566
MA	0.258	0.307	0.268	15,120	9,050	15,300
MI	0.098	0.087	0.086	98,200	83,200	102,030
MN	0.443	0.444	0.413	7,757	8,304	7,962
MO	0.189	0.172	0.176	9,551	4,997	8,110
NH	0.210	0.279	0.215	8,400	5,296	9,023
NJ	0.132	0.122	0.128	7,271	6,608	6,375
NM	0.339	0.210	0.250	2,373	1,680	500
NY	0.126	0.114	0.114	141,320	109,560	140,230
NC	0.110	0.111	0.151	16,494	14,942	25,730
OH	0.221	0.205	0.219	13,274	15,363	19,896
OR	0.238	0.141	0.101	38,032	20,229	14,630
PA	0.133	0.139	0.109	69,825	54,055	55,020
RI	0.267	0.304	0.372	907	668	1,079
SC	0.122	0.197	0.137	6,844	8,278	4,110
TN	0.238	0.222	0.211	2,023	2,000	1,686
UT	0.165	0.145	0.219	6,747	4,480	1,970
VT	0.187	0.217	0.205	9,163	7,278	10,640
VA	0.106	0.117	0.109	27,741	31,491	38,175
WA	0.164	0.115	0.170	821,400	700,000	849,600
WV	0.103	0.090	0.092	11,300	9,678	12,860
WI	0.294	0.278	0.281	13,384	17,233	17,046
US	0.154	0.122	0.148	1,575,403	1,316,172	1,534,271

**Apples, Commercial: Fresh Market Utilization and Price
by State and United States, 1997-99¹**

State	Fresh Market					
	Quantity			Price per Pound ¹		
	1997	1998	1999	1997	1998	1999
	<i>Million Pounds</i>	<i>Million Pounds</i>	<i>Million Pounds</i>	<i>Dollars</i>	<i>Dollars</i>	<i>Dollars</i>
AZ	0.5	11.7	5.4	0.553	0.400	0.406
CA	375.0	400.0	388.0	0.332	0.272	0.248
CO	22.5	45.0	5.0	0.191	0.134	0.300
CT	18.0	14.0	16.5	0.360	0.395	0.355
ID	50.0	70.0	50.0	0.247	0.128	0.216
IL	57.0	26.0		0.219	0.228	
IN	34.5	34.9	40.8	0.278	0.316	0.295
KY	4.9	9.0	6.6	0.270	0.284	0.305
ME	43.0	33.0	40.0	0.240	0.270	0.290
MD	30.2	20.0	9.2	0.254	0.246	0.170
MA	43.5	22.0	42.0	0.320	0.395	0.350
MI	300.0	320.0	370.0	0.150	0.140	0.145
MO	38.5	20.5	34.0	0.230	0.223	0.220
NH	28.0	14.5	26.5	0.270	0.350	0.320
NJ	22.0	22.0	20.0	0.203	0.200	0.213
NM	7.0	8.0	2.0	0.339	0.210	0.250
NY	520.0	420.0	590.0	0.176	0.158	0.165
NC	36.0	47.0	80.0	0.227	0.170	0.235
OH	47.0	52.0	73.0	0.265	0.270	0.258
OR	112.0	89.0	100.0	0.316	0.210	0.122
PA	175.0	151.0	127.0	0.227	0.223	0.210
SC	18.0	23.0	12.0	0.205	0.293	0.260
UT	34.0	26.0	8.0	0.183	0.170	0.240
VT	38.0	23.5	36.0	0.220	0.288	0.280
VA	53.0	100.0	125.0	0.204	0.189	0.183
WA	3,600.0	4,300.0	3,600.0	0.213	0.154	0.215
WV	20.0	17.0	20.0	0.187	0.159	0.217
WI	39.0	52.6	52.9	0.329	0.316	0.317
Oth Sts	47.9	40.8	84.2	0.348	0.364	0.210
US	5,814.5	6,412.5	5,964.1	0.221	0.173	0.212

¹ Equivalent packinghouse door returns for CA, NY, OR, and WA; price at first sale for other States.

**Apples, Commercial: Value of Fresh Market Production
by State and United States, 1997-99**

State	Fresh Market		
	Value of Production		
	1997	1998	1999
	<i>1,000 Dollars</i>	<i>1,000 Dollars</i>	<i>1,000 Dollars</i>
AZ	277	4,680	2,192
CA	124,500	108,800	96,224
CO	4,298	6,030	1,500
CT	6,480	5,530	5,858
ID	12,350	8,960	10,800
IL	12,483	5,928	8,625
IN	9,591	11,028	12,036
KY	1,323	2,556	2,013
ME	10,320	8,910	11,600
MD	7,671	4,920	1,564
MA	13,920	8,690	14,700
MI	45,000	44,800	53,650
MO	8,855	4,572	7,480
NH	7,560	5,075	8,480
NJ	4,466	4,400	4,260
NM	2,373	1,680	500
NY	91,520	66,360	97,350
NC	8,172	7,990	18,800
OH	12,455	14,040	18,834
OR	35,392	18,690	12,200
PA	39,725	33,673	26,670
SC	3,690	6,739	3,120
UT	6,222	4,420	1,920
VT	8,360	6,768	10,080
VA	10,812	18,900	22,875
WA	766,800	662,200	774,000
WV	3,740	2,703	4,340
WI	12,831	16,622	16,769
Oth Sts	16,680	14,843	17,659
US	1,287,866	1,110,507	1,266,099

**Apples, Commercial: Processed Utilization and Price
by State and United States, 1997-99**

State	Processed					
	Quantity			Price per Ton		
	1997	1998	1999	1997	1998	1999
	<i>Million Pounds</i>	<i>Million Pounds</i>	<i>Million Pounds</i>	<i>Dollars</i>	<i>Dollars</i>	<i>Dollars</i>
AZ	43.6	33.3	26.6	204.00	117.00	140.00
CA	587.0	460.0	437.0	130.00	98.00	112.00
CO	11.5	14.0	3.0	146.00	143.00	160.00
CT ¹	5.0	3.0	5.5	276.00	114.00	80.00
ID	60.0	45.0	20.0	98.00	37.00	116.00
IL	10.0	9.0		124.00	127.00	
IN	13.5	15.1	14.0	130.00	145.00	114.00
KY	0.9		0.4	420.00		188.00
ME ¹	19.0	10.0	21.0	176.00	96.00	70.00
MD	14.3	14.0	28.8	174.00	164.00	139.00
MA ¹	15.0	7.5	15.0	160.00	96.00	80.00
MI	700.0	640.0	820.0	152.00	120.00	118.00
MO	12.0	8.5	12.0	116.00	100.00	105.00
NH ¹	12.0	4.5	15.5	140.00	98.00	70.00
NJ	33.0	32.0	30.0	170.00	138.00	141.00
NY	600.0	540.0	640.0	166.00	160.00	134.00
NC	114.0	88.0	90.0	146.00	158.00	154.00
OH	13.0	23.0	18.0	126.00	115.00	118.00
OR	48.0	54.0	45.0	110.00	57.00	108.00
PA	350.0	237.0	378.0	172.00	172.00	150.00
SC	38.0	19.0	18.0	166.00	162.00	110.00
UT	7.0	5.0	1.0	150.00	24.00	100.00
VT ¹	11.0	10.0	16.0	146.00	102.00	70.00
VA	209.0	169.0	225.0	162.00	149.00	136.00
WA	1,400.0	1,800.0	1,400.0	78.00	42.00	108.00
WV	90.0	90.0	120.0	168.00	155.00	142.00
WI	6.5	9.4	7.7	170.00	130.00	72.00
Oth Sts	16.5	9.7	19.9	160.00	161.00	94.90
US	4,439.8	4,350.0	4,427.4	130.00	94.60	121.00

¹ Beginning in 1998, price excludes any value added ingredients, processing or alteration of the raw product.

**Apples, Commercial: Value of Processed Production
by State and United States, 1997-99**

State	Processed		
	Value of Production		
	1997	1998	1999
	<i>1,000 Dollars</i>	<i>1,000 Dollars</i>	<i>1,000 Dollars</i>
AZ	4,447	1,948	1,862
CA	38,155	22,540	24,472
CO	840	1,001	240
CT	690	171	220
ID	2,940	833	1,160
IL	620	572	484
IN	878	1,095	798
KY	189		38
ME	1,672	480	735
MD	1,244	1,148	2,002
MA	1,200	360	600
MI	53,200	38,400	48,380
MO	696	425	630
NH	840	221	543
NJ	2,805	2,208	2,115
NY	49,800	43,200	42,880
NC	8,322	6,952	6,930
OH	819	1,323	1,062
OR	2,640	1,539	2,430
PA	30,100	20,382	28,350
SC	3,154	1,539	990
UT	525	60	50
VT	803	510	560
VA	16,929	12,591	15,300
WA	54,600	37,800	75,600
WV	7,560	6,975	8,520
WI	553	611	277
Oth Sts	1,316	781	944
US	287,537	205,665	268,172

**Apples, Commercial: Processed Utilization, Use, and Price
by State and United States, 1997-99**

Use and State	Processed Utilization ¹					
	Quantity			Price per Ton		
	1997	1998	1999	1997	1998	1999
	<i>Million Pounds</i>	<i>Million Pounds</i>	<i>Million Pounds</i>	<i>Dollars</i>	<i>Dollars</i>	<i>Dollars</i>
Canned						
CA	75.0	20.0	36.0	144.00	144.00	146.00
MI	265.0	230.0	245.0	180.00	146.00	145.00
NY	335.0	292.0	310.0	186.00	192.00	164.00
NC	69.0	58.0	50.0	178.00	190.00	173.00
PA	275.0	181.0	248.0	190.00	192.00	176.00
VA	143.0	109.0	141.0	180.00	180.00	166.00
WA	190.0	170.0	180.0	100.00	84.00	96.00
Oth Sts	146.8	113.8	138.3	181.00	175.00	160.00
US	1,498.8	1,173.8	1,348.3	172.00	164.00	153.00
Juice & Cider						
CA	362.0	320.0	367.0	106.00	88.00	104.00
KY	0.9			420.00		
MI	270.0	300.0	450.0	104.00	82.00	90.00
NY	160.0	170.0	266.0	106.00	92.00	90.00
NC	42.0	23.0	30.0	96.00	78.00	94.00
OH	12.0	21.0		124.00	108.00	
OR	30.0	35.0		66.00	34.00	
PA	65.0	47.0	120.0	105.00	114.00	100.00
VA	56.0	53.0	83.0	118.00	90.00	85.00
WA	930.0	1,330.0	900.0	66.00	32.00	105.00
WV			30.0			92.00
Oth Sts	217.2	186.2	213.8	134.00	66.70	93.00
US	2,145.1	2,485.2	2,459.8	92.00	57.70	98.20

See footnotes at end of table.

--continued

**Apples, Commercial: Processed Utilization, Use, and Price
by State and United States, 1997-99 (continued)**

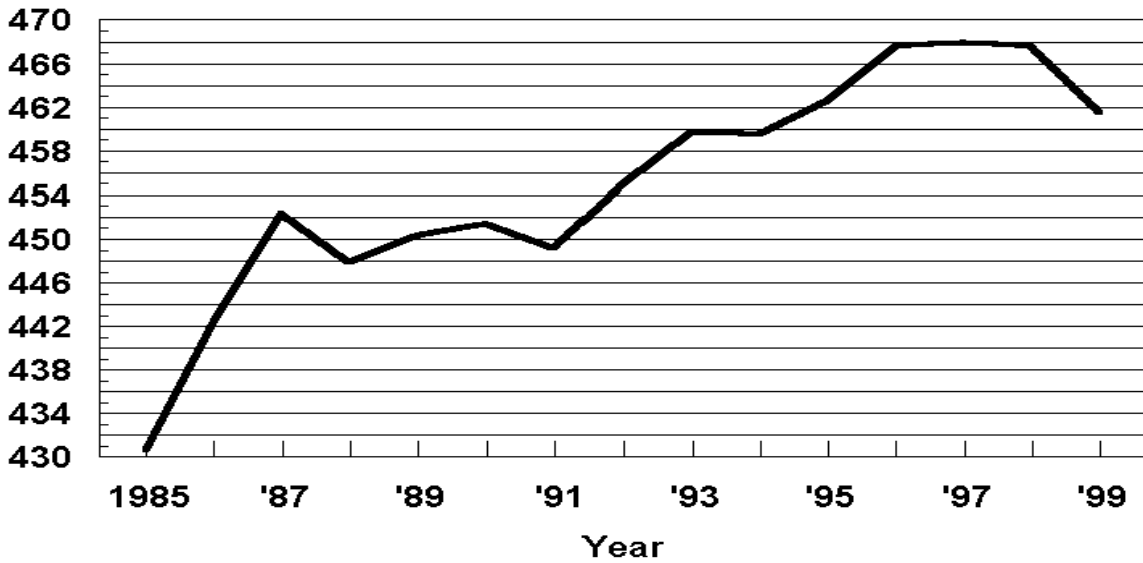
Use and State	Processed Utilization ¹					
	Quantity			Price per Ton		
	1997	1998	1999	1997	1998	1999
	<i>Million Pounds</i>	<i>Million Pounds</i>	<i>Million Pounds</i>	<i>Dollars</i>	<i>Dollars</i>	<i>Dollars</i>
Frozen						
MI	160.0	100.0	110.0	192.00	173.00	170.00
NY	88.0	68.0	45.0	202.00	200.00	168.00
Oth Sts	101.0	98.0	60.3	158.00	81.60	133.00
US	349.0	266.0	215.3	185.00	146.00	159.00
Dried						
US	267.0	329.9	278.2	107.00	75.50	122.00
Other ²						
MI	5.0	10.0	15.0	120.00	100.00	115.00
NY	10.0	4.0	19.0	104.00	80.00	164.00
Oth Sts	164.9	81.1	91.8	163.00	150.00	155.00
US	179.9	95.1	125.8	159.00	145.00	153.00

¹ Missing data included in Other States to avoid disclosure of individual operations.

² Includes vinegar, wine, and fresh slices for pie making.

U. S. Apples Bearing Acres

(000) Acres



U. S. Apples Utilized Production

Million Pounds



**Miscellaneous Fruits: Bearing Acreage, Yield, Production, and Utilization
by State and United States, 1997-99**

Crop, State, and Season	Bearing Acreage	Yield Per Acre ¹	Production		Utilization	
			Total	Utilized	Fresh	Processed
	<i>Acres</i>	<i>Tons</i>	<i>Tons</i>	<i>Tons</i>	<i>Tons</i>	<i>Tons</i>
Apricots ²						
CA						
1997	20,000	6.60	132,000	122,400	20,900	101,500
1998	20,000	5.65	113,000	102,600	18,500	84,100
1999	19,000	4.47	85,000	85,000		
UT						
1997			130	130		
1998			190	180		
1999 ³						
WA						
1997			7,100	7,100		
1998			5,300	5,300		
1999			5,500	5,500		
US						
1997	21,400	6.51	139,230	129,630	26,830	102,800
1998	21,380	5.54	118,490	108,080	22,880	85,200
1999	20,380	4.44	90,500	90,500	25,800	64,700
Avocados						
CA						
1997-98	59,900	2.57	154,000	154,000	152,500	1,500
1998-99 ⁴	59,400	2.29	136,000	136,000	136,000	
1999-00 ⁴	59,000	2.69	159,000	159,000	159,000	
FL						
1997-98	5,900	4.07	24,000	24,000	24,000	
1998-99	6,000	3.83	23,000	23,000	23,000	
1999-00	5,900	3.73	22,000	22,000	22,000	
HI						
1997-98	250	1.00	250	250	250	
1998-99	240	1.04	250	250	250	
1999-00	230	1.30	300	300	300	
US						
1997-98	66,050	2.70	178,250	178,250	176,750	1,500
1998-99 ⁴	65,640	2.43	159,250	159,250	159,250	
1999-00 ⁴	65,130	2.78	181,300	181,300	181,300	
Dates						
CA						
1997	4,800	4.38	21,000	21,000	21,000	
1998	4,900	5.08	24,900	24,900	24,900	
1999	4,900	4.53	22,200	22,200	22,200	

¹ Yield is based on total production.

² Missing data not published to avoid disclosure of individual operations.

³ No significant commercial production in 1999 due to freeze damage.

⁴ Small quantities of processed avocados are included in fresh to avoid disclosure of individual operations.

**Miscellaneous Fruits: Price and Value by State
and United States, 1997-99¹**

Crop, State, and Season	Price per Ton			Value of Production		
	Fresh <i>Dollars</i>	Processed <i>Dollars</i>	All <i>Dollars</i>	Fresh <i>1,000 Dollars</i>	Processed <i>1,000 Dollars</i>	Total <i>1,000 Dollars</i>
Apricots ²						
CA						
1997	467.00	275.00	308.00	9,760	27,913	37,673
1998	533.00	262.00	311.00	9,861	22,034	31,895
1999			361.00			30,703
UT						
1997			492.00			64
1998			728.00			131
1999 ³						
WA						
1997			751.00			5,335
1998			629.00			3,332
1999			850.00			4,674
US						
1997	558.00	273.00	332.00	14,963	28,109	43,072
1998	579.00	260.00	327.00	13,247	22,111	35,358
1999	638.00	292.00	391.00	16,455	18,922	35,377
Avocados						
CA						
1997-98	1,720.00	782.00	1,710.00	262,300	1,173	263,473
1998-99 ⁴	2,400.00		2,400.00	327,002		327,002
1999-00 ⁴	2,360.00		2,360.00	375,095		375,095
FL						
1997-98	584.00		584.00	14,016		14,016
1998-99	716.00		716.00	16,468		16,468
1999-00	748.00		748.00	16,456		16,456
HI						
1997-98	1,060.00		1,060.00	265		265
1998-99	1,040.00		1,040.00	260		260
1999-00	1,200.00		1,200.00	360		360
US						
1997-98	1,560.00	782.00	1,560.00	276,581	1,173	277,754
1998-99 ⁴	2,160.00		2,160.00	343,730		343,730
1999-00 ⁴	2,160.00		2,160.00	391,911		391,911
Dates						
CA						
1997	1,100.00		1,100.00	23,100		23,100
1998	1,220.00		1,220.00	30,378		30,378
1999	1,240.00		1,240.00	27,528		27,528

¹ Missing data not published to avoid disclosure of individual operations.

² Apricot processed price excludes dried. Processing value includes dried.

³ No significant commercial production in 1999 due to freeze damage.

⁴ Small quantities of processed avocados are included in fresh to avoid disclosure of individual operations.

**Miscellaneous Fruits: Bearing Acreage, Yield, Production, and Utilization
by State and United States, 1997-99**

Crop, State, and Season	Bearing Acreage	Yield Per Acre ¹	Production		Utilization	
			Total	Utilized	Fresh	Processed
	<i>Acres</i>	<i>Tons</i>	<i>Tons</i>	<i>Tons</i>	<i>Tons</i>	<i>Tons</i>
Figs ²						
CA						
1997	16,400	3.51	57,500	57,500	2,000	55,500
1998	16,300	3.15	51,300	51,300	1,800	49,500
1999	15,000	2.99	44,900	44,900	2,300	42,600
Kiwifruit						
CA						
1997	5,300	6.60	35,000	31,800	31,300	500
1998	5,300	6.91	36,600	33,000	32,000	1,000
1999	5,300	5.09	27,000	24,000	23,100	900
Nectarines						
CA						
1997	36,000	7.33	264,000	264,000	258,500	5,500
1998	35,500	6.31	224,000	224,000	207,600	16,400
1999	35,500	7.72	274,000	274,000	256,300	17,700
Olives						
CA						
1997	35,300	2.95	104,000	104,000	500	103,500
1998	35,300	2.55	90,000	90,000	500	89,500
1999	35,300	4.11	145,000	145,000	500	144,500
Plums ³						
CA						
1997	42,000	5.86	246,000	246,000		
1998	42,000	4.48	188,000	188,000		
1999	41,500	4.72	196,000	196,000		

¹ Yield is based on total production.

² Small quantities of canned figs are included in fresh to avoid disclosure of individual operations.

³ Missing data not published to avoid disclosure of individual operations.

**Miscellaneous Fruits: Price and Value by State
and United States, 1997-99¹**

Crop, State, and Season	Price per Ton			Value of Production		
	Fresh	Processed	All	Fresh	Processed	Total
	<i>Dollars</i>	<i>Dollars</i>	<i>Dollars</i>	<i>1,000 Dollars</i>	<i>1,000 Dollars</i>	<i>1,000 Dollars</i>
Figs						
CA						
1997			265.00			15,209
1998			226.00			11,611
1999			278.00			12,477
Kiwifruit						
CA						
1997			518.00			16,483
1998			744.00			24,544
1999			634.00			15,215
Nectarines						
CA						
1997			375.00			98,895
1998			471.00			105,466
1999			411.00			112,497
Olives						
CA						
1997	500.00	643.00	642.00	250	66,551	66,801
1998	500.00	459.00	459.00	250	41,081	41,331
1999	500.00	452.00	452.00	250	65,314	65,564
Plums						
CA						
1997			312.00			76,825
1998			529.00			99,388
1999			419.00			82,041

¹ Missing data not published to avoid disclosure of individual operations.

**Miscellaneous Fruits: Bearing Acreage, Yield, Production, and Utilization
by State and United States, 1997-99¹**

Crop, State, and Season	Bearing Acreage	Yield Per Acre ²	Production		Utilization	
			Total	Utilized	Fresh	Processed
	<i>Acres</i>	<i>Tons</i>	<i>Tons</i>	<i>Tons</i>	<i>Tons</i>	<i>Tons</i>
Prunes & Plums						
ID						
1997			3,000	2,700		
1998			4,500	4,300		
1999			1,800	1,770		
MI						
1997	1,150	3.48	4,000	4,000	1,500	2,500
1998	1,100	3.27	3,600	3,600	1,200	2,400
1999	900	4.44	4,000	3,750	1,100	2,650
OR						
1997	2,200	5.45	12,000	10,500		
1998	2,000	5.25	10,500	9,900		
1999	2,000	6.50	13,000	12,000		
WA						
1997			6,500	6,500		
1998			7,000	7,000		
1999			4,500	4,500		
4-State Total						
1997	4,720	5.40	25,500	23,700	10,500	13,200
1998	4,470	5.73	25,600	24,800	11,750	13,050
1999	4,210	5.53	23,300	22,020	11,150	10,870
Prunes (Dried Basis)						
CA						
1997	82,000	2.61	214,000	205,000		205,000
1998	83,000	1.30	108,000	103,000		103,000
1999	83,000	2.14	178,000	165,000		165,000

¹ Missing data not published to avoid disclosure of individual operations.

² Yield is based on total production.

**Miscellaneous Fruits: Price and Value by State
and United States, 1997-99¹**

Crop, State, and Season	Price per Ton			Value of Production		
	Fresh <i>Dollars</i>	Processed <i>Dollars</i>	All <i>Dollars</i>	Fresh <i>1,000 Dollars</i>	Processed <i>1,000 Dollars</i>	Total <i>1,000 Dollars</i>
Prunes & Plums						
ID						
1997			517.00			1,395
1998			553.00			2,377
1999			287.00			508
MI						
1997	460.00	280.00	348.00	690	700	1,390
1998	390.00	255.00	300.00	468	612	1,080
1999	440.00	240.00	299.00	484	636	1,120
OR						
1997			238.00			2,503
1998			274.00			2,714
1999			157.00			1,882
WA						
1997			184.00			1,193
1998			219.00			1,536
1999			226.00			1,019
4-State Total						
1997	448.00	134.00	273.00	4,709	1,772	6,481
1998	476.00	162.00	311.00	5,594	2,113	7,707
1999	232.00	178.00	206.00	2,592	1,937	4,529
Prunes (Dried Basis)						
CA						
1997		883.00	883.00		181,015	181,015
1998		764.00	764.00		78,692	78,692
1999		906.00	906.00		149,490	149,490

¹ Missing data not published to avoid disclosure of individual operations.

**Miscellaneous Fruits: Processed Utilization, Use, and Price
by State and United States, 1997-99**

Crop, Use, and State	Processed Utilization					
	Quantity			Price per Ton		
	1997	1998	1999	1997	1998	1999
	<i>Tons</i>	<i>Tons</i>	<i>Tons</i>	<i>Dollars</i>	<i>Dollars</i>	<i>Dollars</i>
Apricots						
Canned						
CA	46,700	40,700	33,500	320.00	330.00	330.00
Juice						
CA	27,700	24,000	13,000	190.00	125.00	200.00
Frozen						
CA	15,100	10,400	10,500	300.00	315.00	315.00
Dried (Fresh Basis)						
CA	12,000	9,000	7,000	262.00	258.00	271.00
Figs						
Dried (Fresh Basis)						
CA	55,500	49,500	42,600	233.00	198.00	231.00
Olives ¹						
Canned						
CA	82,200	64,200		760.00	590.00	
Crushed for Oil						
CA	3,600	4,100		11.00	11.00	
Limited						
CA	10,200	12,800		386.00	240.00	
Undersized						
CA	7,500	8,400		11.00	11.00	
Prunes & Plums						
Canned						
MI ²	2,100			267.00		
Oth Sts	6,600	7,250	5,400	111.00	148.00	135.00
4-State Total	8,700	7,250	5,400	149.00	148.00	135.00
Frozen						
4-State Total	1,700	1,650	950	159.00	230.00	297.00
Dried & Other						
4-State Total	2,800	4,150	4,120	76.00	160.00	217.00

¹ Breakdown of processed utilization for 1999 unpublished to avoid disclosure of individual operations.

² Canned utilization for 1998 and 1999 are unpublished to avoid disclosure of individual operations and included in "Other States".

California Dry Fruits: Production, Use, and Price, 1997-99

Crop	Quantity			Price per Ton		
	1997	1998	1999	1997	1998	1999
	<i>Tons</i>	<i>Tons</i>	<i>Tons</i>	<i>Dollars</i>	<i>Dollars</i>	<i>Dollars</i>
Fresh Basis						
Apricots	12,000	9,000	7,000	262.00	258.00	271.00
Figs	55,500	49,500	42,600	233.00	198.00	231.00
Grapes						
Raisin	1,778,000	1,304,000	1,422,000	219.00	266.00	353.00
Table	18,000	18,000	24,000	220.00	197.00	218.00
Peaches						
Freestone	17,050	12,500	15,700	68.00	67.50	73.00
Pears						
Bartlett	5,400	7,600	7,000	151.00	217.00	150.00
Prunes	627,300	329,600	478,500	289.00	239.00	312.00
Dried Basis						
Apricots	1,740	1,250	1,160	1,810.00	1,860.00	1,634.00
Figs						
Standard	15,900	13,300	13,000	801.00	722.00	753.00
Sub-Std.	2,600	3,200	1,200	78.00	60.00	60.00
Grapes						
Raisin ^{1 2}	428,500	277,400	341,000	908.00	1,250.00	1,470.00
Table	4,300	3,800	5,800	914.00	933.00	900.00
Peaches						
Freestone	1,894	1,551	1,849	612.00	544.50	619.50
Pears						
Bartlett	800	1,100	1,010	1,020.00	1,500.00	1,040.00
Prunes	205,000	103,000	165,000	883.00	764.00	906.00

¹ Includes substandard raisins diverted to other uses.

² Dried basis 1 ton of raisins equivalent to 4.15 tons for 1997, 4.70 tons for 1998, and 4.17 tons for 1999.

**Strawberries: Area Planted and Harvested, Yield, and Production
by Season, State, and United States, 1997-99**

Season and State	Area Planted			Area Harvested		
	1997	1998	1999	1997	1998	1999
	<i>Acres</i>	<i>Acres</i>	<i>Acres</i>	<i>Acres</i>	<i>Acres</i>	<i>Acres</i>
Winter						
FL	6,100	6,200	6,200	6,100	6,200	6,200
Spring						
AR	220	210	230	210	180	210
CA	22,600	24,200	24,600	22,600	24,200	24,600
LA	450	400	400	450	400	400
MI	1,600	1,500	1,400	1,500	1,400	1,400
NJ	500	500	500	450	450	450
NY	1,700	1,700	1,700	1,600	1,600	1,600
NC	1,700	1,700	1,650	1,500	1,600	1,600
OH	1,200	1,200	1,200	950	1,000	1,000
OR	5,500	4,500	4,300	5,000	4,400	4,200
PA	1,400	1,200	1,300	1,400	1,200	1,300
WA	1,400	1,500	1,500	1,400	1,500	1,500
WI	1,300	1,200	1,200	1,100	1,100	1,100
Total	39,570	39,810	39,980	38,160	39,030	39,360
US	45,670	46,010	46,180	44,260	45,230	45,560
	Yield per Acre			Production ¹		
	1997	1998	1999	1997	1998	1999
	<i>Cwt</i>	<i>Cwt</i>	<i>Cwt</i>	<i>1,000 Cwt</i>	<i>1,000 Cwt</i>	<i>1,000 Cwt</i>
Winter						
FL	290	260	300	1,769	1,612	1,860
Spring						
AR	71	44	52	15	8	11
CA	590	560	615	13,334	13,552	15,155
LA	110	150	150	50	60	60
MI	65	68	64	98	95	90
NJ	44	44	44	20	20	20
NY	42	38	49	67	61	78
NC	120	125	110	180	200	176
OH	36	52	40	34	52	40
OR	100	115	99	500	506	416
PA	46	42	40	64	50	52
WA	65	80	80	91	120	120
WI	51	55	44	56	61	48
Total	380	379	413	14,509	14,785	16,266
US	368	363	398	16,278	16,397	18,126

¹ Excludes the following quantities not harvested or not marketed because of economic conditions: 1997 - WA, 10,000 cwt., 1998 - WA, 5,000 cwt., 1999 - WA, 5,000 cwt.

**Strawberries: Price and Value by Season,
State, and United States, 1997-99**

Season and State	Price per Cwt			Value of Production		
	1997	1998	1999	1997	1998	1999
	<i>Dollars</i>	<i>Dollars</i>	<i>Dollars</i>	<i>1,000 Dollars</i>	<i>1,000 Dollars</i>	<i>1,000 Dollars</i>
Winter						
FL	82.60	100.00	81.00	146,119	161,200	150,660
Spring						
AR	85.00	65.00	62.00	1,275	520	682
CA	51.50	55.80	58.70	686,418	756,848	889,207
LA	60.00	70.00	72.00	3,000	4,200	4,320
MI	75.60	74.60	71.20	7,411	7,089	6,412
NJ	83.30	44.20	63.50	1,666	884	1,270
NY	101.00	115.00	106.00	6,767	7,015	8,268
NC	70.00	75.00	80.00	12,600	15,000	14,080
OH	93.00	100.00	105.00	3,162	5,200	4,200
OR	39.50	51.00	51.50	19,750	25,820	21,412
PA	77.30	109.00	105.00	4,950	5,450	5,434
WA	49.70	50.30	61.40	4,520	6,040	7,368
WI	102.00	108.00	106.00	5,712	6,588	5,088
Total	52.20	56.90	59.50	757,231	840,654	967,741
US	55.50	61.10	61.70	903,350	1,001,854	1,118,401

**Strawberries: Fresh Market and Processed Production
by Season, State, and United States, 1997-99**

Utilization, Season, and State	Production		
	1997	1998	1999
	<i>1,000 Cwt</i>	<i>1,000 Cwt</i>	<i>1,000 Cwt</i>
Fresh			
Winter			
FL	1,769	1,612	1,860
Spring			
AR	15	8	11
CA	9,618	9,086	10,185
LA	50	60	60
MI	87	82	71
NJ	20	20	20
NY	67	61	78
NC	180	200	176
OH	34	52	40
OR	35	26	17
PA	64	50	52
WA	23	20	24
WI	56	61	48
Total	10,249	9,726	10,782
US	12,018	11,338	12,642
Processed			
Spring			
CA	3,716	4,466	4,970
MI	11	13	19
OR	465	480	399
WA	68	100	96
US	4,260	5,059	5,484

**Strawberries: Fresh Market and Processed Price and Value
by Season, State, and United States, 1997-99**

Utilization, Season and State	Price per Cwt			Value of Production		
	1997	1998	1999	1997	1998	1999
	<i>Dollars</i>	<i>Dollars</i>	<i>Dollars</i>	<i>1,000 Dollars</i>	<i>1,000 Dollars</i>	<i>1,000 Dollars</i>
Fresh						
Winter						
FL	82.60	100.00	81.00	146,119	161,200	150,660
Spring						
AR	85.00	65.00	62.00	1,275	520	682
CA	61.40	68.70	71.30	590,545	624,208	726,191
LA	60.00	70.00	72.00	3,000	4,200	4,320
MI	80.00	79.00	78.00	6,960	6,478	5,538
NJ	83.30	44.20	63.50	1,666	884	1,270
NY	101.00	115.00	106.00	6,767	7,015	8,268
NC	70.00	75.00	80.00	12,600	15,000	14,080
OH	93.00	100.00	105.00	3,162	5,200	4,200
OR	86.00	70.00	86.00	3,010	1,820	1,462
PA	77.30	109.00	104.50	4,950	5,450	5,434
WA	96.00	92.00	107.00	2,208	1,840	2,568
WI	102.00	108.00	106.00	5,712	6,588	5,088
Total	62.60	69.80	72.30	641,855	679,203	779,101
US	65.60	74.10	73.50	787,974	840,403	929,761
Processed						
Spring						
CA	25.80	29.70	32.80	95,873	132,640	163,016
MI	41.00	47.00	46.00	451	611	874
OR	36.00	50.00	50.00	16,740	24,000	19,950
WA	34.00	42.00	50.00	2,312	4,200	4,800
US	27.10	31.90	34.40	115,376	161,451	188,640

**Berries: Harvested Acreage, Yield, Production, and Utilization
by Crop, State, and United States, 1997-99**

Crop, State, and Year	Area Harvested	Yield Per Acre ¹	Production		Utilization	
			Total	Utilized	Fresh	Processed
	<i>Acres</i>	<i>Pounds</i>	<i>1,000 Pounds</i>	<i>1,000 Pounds</i>	<i>1,000 Pounds</i>	<i>1,000 Pounds</i>
Cultivated Blueberries						
AL						
1997	470	1,400	1,020	660	650	10
1998	310	1,610	1,060	500	480	20
1999	310	2,100	890	650	560	90
AR						
1997	550	3,000	2,050	1,650	1,350	300
1998	500	1,800	1,110	900	800	100
1999	450	2,510	1,210	1,130	1,030	100
FL						
1997	1,200	1,670	2,400	2,000	1,600	400
1998	1,200	1,670	2,400	2,000	1,600	400
1999	1,200	1,210	1,750	1,450	1,200	250
GA						
1997	4,000	3,250	14,000	13,000	4,000	9,000
1998	4,400	1,700	9,000	7,500	4,000	3,500
1999	4,400	2,500	12,000	11,000	6,000	5,000
IN						
1997	800	4,380	3,600	3,500	2,200	1,300
1998	790	3,920	3,200	3,100	2,000	1,100
1999	770	3,640	2,900	2,800	2,000	800
MI						
1997	16,500	4,360	72,000	72,000	19,000	53,000
1998	16,400	2,990	49,000	49,000	16,000	33,000
1999	16,600	4,340	72,000	72,000	20,000	52,000
NJ						
1997	7,400	4,590	35,000	34,000	24,000	10,000
1998	7,500	4,800	37,000	36,000	28,000	8,000
1999	7,500	5,200	41,000	39,000	28,000	11,000
NY						
1997	700	2,140	1,600	1,500	1,400	100
1998	700	2,140	1,600	1,500	1,300	200
1999	700	2,290	1,900	1,600	1,500	100
NC						
1997	3,250	2,650	8,600	8,600	6,600	2,000
1998	3,000	4,730	15,000	14,200	10,800	3,400
1999	3,200	4,060	13,000	13,000	10,000	3,000
OR						
1997	2,500	8,400	21,000	21,000	6,500	14,500
1998	2,500	9,200	23,000	23,000	8,000	15,000
1999	2,600	8,650	22,500	22,500	7,500	15,000
WA						
1997	1,300	6,700	8,710	8,710	2,000	6,710
1998	1,500	7,000	10,700	10,500	2,000	8,500
1999	1,600	6,800	11,080	10,880	1,500	9,380
US						
1997	38,670	4,310	169,980	166,620	69,300	97,320
1998	38,800	3,820	153,070	148,200	74,980	73,220
1999	39,330	4,480	180,230	176,010	79,290	96,720

¹ Yield is based on utilized production.

**Berries: Price and Value by Crop, State,
and United States, 1997-99**

Crop, State and Year	Price per Pound			Value of Production		
	Fresh	Processed	All	Fresh	Processed	Total
	<i>Dollars</i>	<i>Dollars</i>	<i>Dollars</i>	<i>1,000 Dollars</i>	<i>1,000 Dollars</i>	<i>1,000 Dollars</i>
Cultivated Blueberries						
AL						
1997	0.910	0.550	0.906	592	6	598
1998	1.280	0.800	1.260	614	16	630
1999	1.060	0.870	1.030	594	78	672
AR						
1997	1.070	0.670	0.998	1,445	201	1,646
1998	1.060	0.540	1.000	848	54	902
1999	1.080	1.000	1.070	1,112	100	1,212
FL						
1997	2.950	0.800	2.520	4,720	320	5,040
1998	3.750	0.600	3.120	6,000	240	6,240
1999	5.700	0.700	4.840	6,840	175	7,015
GA						
1997	1.140	0.530	0.718	4,560	4,770	9,330
1998	0.980	0.530	0.770	3,920	1,855	5,775
1999	1.180	0.600	0.916	7,080	3,000	10,080
IN						
1997	1.000	0.608	0.854	2,200	790	2,990
1998	1.050	0.572	0.880	2,100	629	2,729
1999	1.060	0.594	0.927	2,120	475	2,595
MI						
1997	0.988	0.590	0.695	18,772	31,270	50,042
1998	0.860	0.500	0.618	13,760	16,500	30,260
1999	1.130	0.660	0.791	22,600	34,320	56,920
NJ						
1997	1.020	0.950	0.999	24,480	9,500	33,980
1998	0.870	0.500	0.788	24,360	4,000	28,360
1999	1.020	0.730	0.938	28,560	8,030	36,590
NY						
1997	1.080	0.900	1.070	1,512	90	1,602
1998	1.040	0.920	1.020	1,352	184	1,536
1999	1.110	0.680	1.080	1,665	68	1,733
NC						
1997	1.350	0.590	1.170	8,910	1,180	10,090
1998	1.090	0.350	0.913	11,772	1,190	12,962
1999	1.190	0.510	1.030	11,900	1,530	13,430
OR						
1997	0.875	0.670	0.733	5,688	9,715	15,403
1998	0.720	0.385	0.502	5,760	5,775	11,535
1999	1.050	0.670	0.797	7,875	10,050	17,925
WA						
1997	1.670	0.660	0.892	3,340	4,429	7,769
1998	1.030	0.530	0.625	2,060	4,505	6,565
1999	1.220	0.640	0.720	1,830	6,003	7,833
US						
1997	1.100	0.640	0.831	76,219	62,271	138,490
1998	0.968	0.477	0.725	72,546	34,948	107,494
1999	1.160	0.660	0.886	92,176	63,829	156,005

**Berries: Harvested Acreage, Yield, Production, and Utilization
by Crop, State, and United States, 1997-99**

Crop, State, and Year	Area Harvested	Yield Per Acre ¹	Production		Utilization	
			Total	Utilized	Fresh	Processed
	<i>Acres</i>	<i>Pounds</i>	<i>1,000 Pounds</i>	<i>1,000 Pounds</i>	<i>1,000 Pounds</i>	<i>1,000 Pounds</i>
Cultivated Blackberries						
OR						
1997	5,510	7,930	43,700	43,700	750	42,950
1998	5,550	7,010	38,900	38,900	600	38,300
1999	5,750	6,630	38,100	38,100	1,500	36,600
Boysenberries						
CA ²						
1997	270	9,110	2,460	2,460		
1998	250	7,000	1,750	1,750		
1999	300	9,330	2,800	2,800		
OR						
1997	1,350	5,260	7,100	7,100	200	6,900
1998	1,360	4,560	6,200	6,200	300	5,900
1999	1,400	5,000	7,000	7,000	300	6,700
US						
1997	1,620	5,900	9,560	9,560		
1998	1,610	4,940	7,950	7,950		
1999	1,700	5,760	9,800	9,800		
Loganberries						
OR						
1997	90	3,670	330	330	150	180
1998	70	4,000	280	280	90	190
1999	80	4,750	380	380	90	290
Black Raspberries						
OR						
1997	1,100	1,910	2,100	2,100	10	2,090
1998	1,060	2,450	2,600	2,600	20	2,580
1999	1,100	2,640	2,900	2,900	10	2,890
Red Raspberries						
OR						
1997	3,600	4,860	17,500	17,500	500	17,000
1998	3,300	4,300	14,200	14,200	800	13,400
1999	3,000	4,500	13,500	13,500	700	12,800
WA						
1997	8,500	7,000	66,300	59,500	3,000	56,500
1998	9,000	6,700	65,300	60,300	2,300	58,000
1999	9,500	7,300	71,350	69,350	4,000	65,350
US						
1997	12,100	6,360	83,800	77,000	3,500	73,500
1998	12,300	6,060	79,500	74,500	3,100	71,400
1999	12,500	6,630	84,850	82,850	4,700	78,150
All Raspberries						
CA ²						
1997	1,700	8,530	14,500	14,500		
1998	1,700	8,710	14,800	14,800		
1999	1,800	11,600	20,800	20,800		

¹ Yield is based on utilized production.

² No breakdown of utilization available.

**Berries: Price and Value by Crop, State,
and United States, 1997-99**

Crop, State, and Year	Price per Pound			Value of Production		
	Fresh	Processed	All	Fresh	Processed	Total
	<i>Dollars</i>	<i>Dollars</i>	<i>Dollars</i>	<i>1,000 Dollars</i>	<i>1,000 Dollars</i>	<i>1,000 Dollars</i>
Cultivated Blackberries						
OR ¹						
1997	1.100	0.390	0.403	825	16,765	17,590
1998	1.210	0.436	0.448	726	16,699	17,425
1999	1.030	0.676	0.690	1,545	24,742	26,287
Boysenberries						
CA ²						
1997			0.667			1,642
1998			0.792			1,386
1999			0.824			2,308
OR						
1997	1.190	0.530	0.549	238	3,657	3,895
1998	0.835	0.430	0.450	251	2,537	2,788
1999	1.070	0.640	0.658	321	4,288	4,609
US						
1997			0.579			5,537
1998			0.525			4,174
1999			0.706			6,917
Loganberries						
OR						
1997	1.700	0.770	1.190	255	139	394
1998	1.120	0.740	0.864	101	141	242
1999	1.520	0.880	1.030	137	255	392
Black Raspberries						
OR						
1997	2.880	1.900	1.900	29	3,971	4,000
1998	2.370	2.100	2.100	47	5,418	5,465
1999	2.420	1.890	1.890	24	5,462	5,486
Red Raspberries						
OR						
1997	1.440	0.525	0.551	720	8,925	9,645
1998	1.430	0.395	0.453	1,144	5,293	6,437
1999	1.000	0.690	0.706	700	8,832	9,532
WA						
1997	1.430	0.420	0.471	4,290	23,730	28,020
1998	1.280	0.340	0.376	2,944	19,720	22,664
1999	1.290	0.660	0.696	5,160	43,131	48,291
US						
1997	1.430	0.444	0.489	5,010	32,655	37,665
1998	1.320	0.350	0.391	4,088	25,013	29,101
1999	1.250	0.665	0.698	5,860	51,963	57,823
All Raspberries						
CA ²						
1997			1.390			20,225
1998			1.920			28,470
1999			1.470			30,604

¹ Value of production is equal to the sum of unpublished varietal values.

² No breakdown of utilization available.

**Sweet Cherries: Bearing Acreage, Yield, Production, and Utilization
by State and United States, 1997-99¹**

State and Year	Bearing Acreage	Yield Per Acre	Production		Utilization	
			Total	Utilized	Fresh	Processed
	<i>Acres</i>	<i>Tons</i>	<i>Tons</i>	<i>Tons</i>	<i>Tons</i>	<i>Tons</i>
CA						
1997	17,000	2.89	49,200	49,200	31,600	17,600
1998	17,500	0.87	15,200	15,200	7,500	7,700
1999	18,500	4.30	79,500	79,500	54,200	25,300
ID						
1997			1,600	1,600		
1998			2,200	2,070		
1999			1,900	1,670		
MI						
1997	7,800	3.46	27,000	27,000	500	26,500
1998	7,900	4.43	35,000	33,000	700	32,300
1999	8,100	3.33	27,000	26,500	950	25,550
MT						
1997			1,100	870		
1998			2,050	1,890		
1999			720	690		
NY						
1997	750	0.87	650	620		
1998	750	0.93	700	650		
1999	750	1.40	1,050	1,000		
OR						
1997	11,000	4.55	50,000	50,000	15,000	35,000
1998	11,000	5.00	55,000	54,500	25,000	29,500
1999	11,000	4.55	50,000	49,500	22,500	27,000
PA						
1997			500	500	500	
1998			550	400	400	
1999			800	750	750	
UT						
1997	600	1.20	720	700	420	280
1998	600	4.50	2,700	2,700	800	1,900
1999	600	1.92	1,150	1,150	800	350
WA						
1997	18,000	5.28	95,000	93,000	65,000	28,000
1998	18,000	5.44	98,000	98,000	71,000	27,000
1999	18,000	3.72	67,000	67,000	50,000	17,000
US						
1997	56,640	3.99	225,770	223,490	115,440	108,050
1998	57,290	3.69	211,400	208,410	108,960	99,450
1999	58,400	3.92	229,120	227,760	131,910	95,850

¹ Missing data not published to avoid disclosure of individual operations.

**Sweet Cherries: Price and Value by State
and United States, 1997-99 ¹**

State and Year	Price per Ton			Value of Production		
	Fresh	Processed	All	Fresh	Processed	All
	<i>Dollars</i>	<i>Dollars</i>	<i>Dollars</i>	<i>1,000 Dollars</i>	<i>1,000 Dollars</i>	<i>1,000 Dollars</i>
CA						
1997	1,570.00	782.00	1,290.00	49,612	13,763	63,375
1998	2,330.00	784.00	1,550.00	17,475	6,037	23,512
1999	1,040.00	494.00	866.00	56,368	12,498	68,866
ID						
1997			1,290.00			2,063
1998			1,070.00			2,207
1999			1,630.00			2,720
MI						
1997	1,600.00	724.00	740.00	800	19,186	19,986
1998	1,400.00	544.00	562.00	980	17,571	18,551
1999	1,500.00	498.00	534.00	1,425	12,724	14,149
MT						
1997			954.00			830
1998			1,080.00			2,040
1999			1,560.00			1,076
NY						
1997			1,720.00			1,069
1998			2,070.00			1,346
1999			1,490.00			1,494
OR						
1997	1,710.00	886.00	1,130.00	25,650	31,010	56,660
1998	904.00	827.00	862.00	22,600	24,397	46,997
1999	954.00	732.00	833.00	21,465	19,764	41,229
PA						
1997	2,380.00		2,380.00	1,190		1,190
1998	2,320.00		2,320.00	928		928
1999	2,600.00		2,600.00	1,950		1,950
UT						
1997	1,100.00	650.00	920.00	462	182	644
1998	940.00	580.00	687.00	752	1,102	1,854
1999	1,200.00	540.00	999.00	960	189	1,149
WA						
1997	1,730.00	723.00	1,430.00	112,450	20,244	132,694
1998	1,600.00	563.00	1,310.00	113,600	15,201	128,801
1999	2,120.00	580.00	1,730.00	106,000	9,860	115,860
US						
1997	1,680.00	784.00	1,250.00	193,805	84,706	278,511
1998	1,480.00	653.00	1,090.00	161,303	64,933	226,236
1999	1,460.00	577.00	1,090.00	193,145	55,348	248,493

¹ Missing data not published to avoid disclosure of individual operations.

**Tart Cherries: Bearing Acreage, Yield, Production, and Utilization
by State and United States, 1997-99¹**

State and Year	Bearing Acreage	Yield Per Acre	Production		Utilization	
			Total	Utilized	Fresh	Processed
	<i>Acres</i>	<i>Pounds</i>	<i>Million Pounds</i>	<i>Million Pounds</i>	<i>Million Pounds</i>	<i>Million Pounds</i>
CO						
1997			0.7	0.6		
1998			1.3	1.2		
1999			0.6	0.6		
MI						
1997	28,400	7,920	225.0	221.0	1.0	220.0
1998	28,400	9,260	263.0	229.0	1.0	228.0
1999	28,100	6,580	185.0	185.0	1.0	184.0
NY						
1997	2,600	5,580	14.5	13.2	0.2	13.0
1998	2,600	5,380	14.0	12.2	0.2	12.0
1999	2,600	6,540	17.0	17.0	0.1	16.9
OR						
1997	1,300	2,850	3.7	3.4		
1998	1,300	2,150	2.8	2.7		
1999	1,300	4,080	5.3	5.3		
PA						
1997	1,200	5,420	6.5	6.5		
1998	1,200	3,500	4.2	4.2		
1999	1,200	6,000	7.2	7.2		
UT						
1997	2,800	6,250	17.5	14.0		14.0
1998	2,800	11,800	33.0	27.0		27.0
1999	2,800	5,180	14.5	14.5		14.5
WA						
1997			13.5	13.5		
1998			14.0	14.0		
1999			16.5	16.5		
WI						
1997	2,400	4,790	11.5	11.1	0.4	10.7
1998	2,400	6,580	15.8	15.3	0.1	15.2
1999	2,300	4,350	10.0	8.0	0.1	7.9
US						
1997	40,330	7,260	292.9	283.3	2.6	280.7
1998	40,320	8,630	348.1	305.6	2.3	303.3
1999	39,900	6,420	256.1	254.1	1.8	252.3

¹ Missing data not published to avoid disclosure of individual operations.

**Tart Cherries: Price and Value by State
and United States, 1997-99¹**

State and Year	Price per Pound			Value of Production		
	Fresh	Processed	All	Fresh	Processed	All
	<i>Dollars</i>	<i>Dollars</i>	<i>Dollars</i>	<i>1,000 Dollars</i>	<i>1,000 Dollars</i>	<i>1,000 Dollars</i>
CO ²						
1997			0.560			336
1998			0.307			368
1999			0.303			182
MI						
1997	0.500	0.154	0.156	500	33,880	34,380
1998	0.470	0.139	0.140	470	31,692	32,162
1999	0.550	0.214	0.216	550	39,376	39,926
NY						
1997	1.030	0.160	0.173	206	2,080	2,286
1998	0.980	0.167	0.180	196	2,004	2,200
1999	0.800	0.153	0.157	80	2,586	2,666
OR						
1997			0.210			714
1998			0.127			344
1999			0.239			1,265
PA						
1997			0.258			1,679
1998			0.190			800
1999			0.293			2,112
UT						
1997		0.160	0.160		2,240	2,240
1998		0.160	0.160		4,320	4,320
1999		0.186	0.186		2,697	2,697
WA						
1997			0.100			1,350
1998			0.120			1,680
1999			0.175			2,888
WI						
1997	0.400	0.165	0.174	160	1,766	1,926
1998	0.320	0.150	0.151	32	2,280	2,312
1999	0.600	0.180	0.185	60	1,422	1,482
US						
1997	0.563	0.155	0.159	1,465	43,446	44,911
1998	0.494	0.142	0.145	1,136	43,050	44,186
1999	0.562	0.207	0.209	1,011	52,207	53,218

¹ Missing data not published to avoid disclosure of individual operations.

² Beginning in 1998, price excludes any value added ingredients, processing or alteration of the raw product.

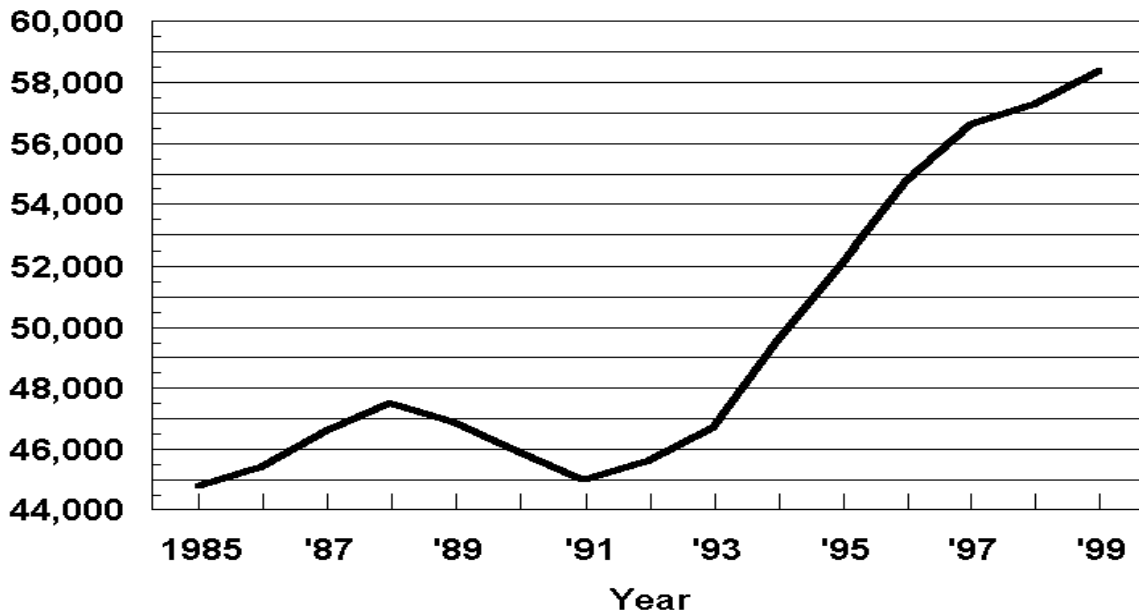
**Sweet and Tart Cherries: Processed Utilization, Use,
and Price by State and United States, 1997-99**

Crop, Use, and State	Processed Utilization					
	Quantity			Price per Unit		
	1997	1998	1999	1997	1998	1999
	<i>Tons</i>	<i>Tons</i>	<i>Tons</i>	<i>Dollars per Ton</i>	<i>Dollars per Ton</i>	<i>Dollars per Ton</i>
Sweet Cherries						
Canned						
MI	800	4,700	3,900	1,000.00	580.00	540.00
OR	4,000	4,000	3,800	858.00	1,000.00	975.00
WA	7,000	7,000	5,000	1,120.00	845.00	730.00
US	11,800	15,700	12,700	1,020.00	805.00	745.00
Brined						
MI	21,500	24,500	19,300	650.00	530.00	470.00
OR	28,000	25,000	22,000	892.00	800.00	710.00
WA	14,000	14,000	8,500	625.00	565.00	570.00
Oth Sts	14,150	5,750	19,985	780.00	583.00	519.00
US	77,650	69,250	69,785	756.00	639.00	572.00
Other ¹						
MI	4,200	3,100	2,350	1,050.00	598.00	650.00
OR	3,000	500	1,200	870.00	770.00	357.00
WA	7,000	6,000	3,500	520.00	230.00	390.00
Oth Sts	4,400	4,900	6,315	735.00	900.00	414.00
US	18,600	14,500	13,365	747.00	554.00	444.00
	<i>Million Pounds</i>	<i>Million Pounds</i>	<i>Million Pounds</i>	<i>Dollars per Pound</i>	<i>Dollars per Pound</i>	<i>Dollars per Pound</i>
Tart Cherries						
Canned						
MI	70.0	65.0	69.0	0.164	0.147	0.208
Oth Sts	16.3	10.3	15.9	0.198	0.173	0.195
US	86.3	75.3	84.9	0.170	0.151	0.206
Frozen						
MI	145.0	150.0	100.0	0.153	0.139	0.235
UT	13.0	27.0	14.5	0.170	0.160	0.186
Oth Sts	15.6	22.8	18.4	0.154	0.147	0.194
US	173.6	199.8	132.9	0.154	0.143	0.224
Other ²						
MI	5.0	13.0	15.0	0.042	0.064	0.100
Oth Sts	15.8	15.2	19.5	0.109	0.126	0.177
US	20.8	28.2	34.5	0.093	0.098	0.143

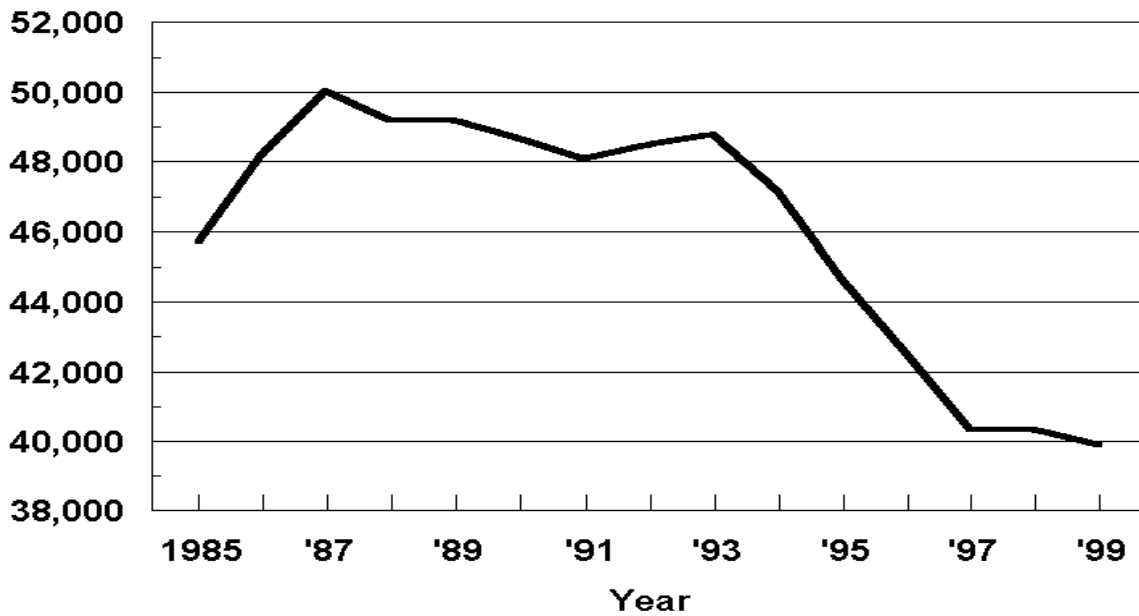
¹ Includes California canned utilization, and other processed utilizations from all states.

² Juice, wine, and brined.

U. S. Sweet Cherries Bearing Acres



U. S. Tart Cherries Bearing Acres



**Cranberries: Area Harvested, Yield, Total and Utilized Production
by State and United States, 1997-99¹**

Year and State	Area Harvested	Yield per Acre	Production	
			Total	Utilized
	<i>Acres</i>	<i>Barrels</i>	<i>Barrels</i>	<i>Barrels</i>
1997				
MA	14,600	143.8	2,100,000	2,100,000
NJ	3,900	149.2	582,000	582,000
OR	2,000	175.0	350,000	350,000
WA	1,500	110.0	165,000	165,000
WI	13,700	167.9	2,300,000	2,300,000
US	35,700	154.0	5,497,000	5,497,000
1998				
MA	14,400	130.2	1,875,000	1,875,000
NJ	3,900	133.6	521,000	521,000
OR	2,200	161.4	355,000	355,000
WA	1,600	105.0	168,000	168,000
WI	14,500	174.1	2,525,000	2,525,000
US	36,600	148.7	5,444,000	5,444,000
1999				
MA	14,800	127.4	1,886,000	1,886,000
NJ	3,900	178.5	696,000	696,000
OR	2,300	139.1	320,000	320,000
WA	1,600	91.9	147,000	147,000
WI	14,600	228.8	3,340,000	3,340,000
US	37,200	171.7	6,389,000	6,389,000

¹ A barrel weighs 100 lbs.

**Cranberries: Utilization, Price, and Value
by State and United States, 1997-99**

Year and State	Utilization			Price per Barrel ²	Value of Utilized Production
	Fresh	Processed	Shrinkage ¹		
	<i>Barrels</i>	<i>Barrels</i>	<i>Barrels</i>	<i>Dollars</i>	<i>1,000 Dollars</i>
1997					
MA	93,000	1,946,000	61,000	66.20	139,020
NJ		579,000	3,000	56.60	32,941
OR		350,000		55.70	19,495
WA	22,000	143,000		55.70	9,191
WI	110,000	2,054,000	136,000	65.00	149,500
US	225,000	5,072,000	200,000	63.70	350,147
1998					
MA	91,000	1,752,000	32,000	37.30	69,938
NJ		518,000	3,000	26.30	13,702
OR		355,000		39.80	14,129
WA	24,000	144,000		25.00	4,200
WI	129,000	2,388,000	8,000	43.30	109,332
US	244,000	5,157,000	43,000	38.80	211,301
1999 ³					
MA					
NJ					
OR					
WA					
WI					
US					

¹ Cranberries paid for by processors and lost because of dehydration and berry breakdown after delivery.

² Weighted average of co-op and independent sales. Co-op prices represent pool proceeds excluding returns from non-cranberry products and before any deductions for capital stock and other retains.

³ Estimates for 1999 will be published on August 15, 2000.

**Grapes: Bearing Acreage and Yield by Type,
State, and United States, 1997-99**

State and Type	Bearing Acreage			Yield per Acre ¹		
	1997	1998	1999	1997	1998	1999
	<i>Acres</i>	<i>Acres</i>	<i>Acres</i>	<i>Tons</i>	<i>Tons</i>	<i>Tons</i>
AZ	4,300	4,300	4,100	5.81	5.35	5.12
AR	1,400	1,300	1,400	4.64	3.50	3.50
CA						
All Types	725,000	743,000	790,000	9.17	7.12	7.01
Wine	374,000	385,000	424,000	7.86	6.68	6.28
Table	81,000	83,000	87,000	10.19	7.75	8.70
Raisin	270,000	275,000	279,000	10.68	7.55	7.59
GA	1,200	1,400	1,200	2.17	2.29	2.75
MI	12,300	12,300	11,700	4.96	5.72	6.41
MO	700	750	800	2.79	2.93	3.50
NY	31,500	31,500	31,500	4.41	4.06	6.51
NC	470	470	460	2.02	3.19	4.13
OH	2,000	2,000	2,000	3.45	3.05	4.60
OR	6,300	7,100	7,400	2.94	2.07	2.42
PA	12,800	12,800	12,800	4.77	4.22	6.88
SC	300	250	300	1.67	1.20	1.20
WA	37,000	39,000	41,000	8.62	5.69	6.46
US	835,270	856,170	904,660	8.73	6.80	6.89

¹ Yield is based on total production.

**Grapes: Total and Utilized Production, Price, and Value
by Type, State, and United States, 1997-99**

State and Type	Total Production			Utilized Production		
	1997	1998	1999	1997	1998	1999
	<i>Tons</i>	<i>Tons</i>	<i>Tons</i>	<i>Tons</i>	<i>Tons</i>	<i>Tons</i>
AZ	25,000	23,000	21,000	25,000	23,000	21,000
AR	6,500	4,550	4,900	5,500	4,430	4,800
CA						
All Types	6,648,000	5,290,000	5,536,000	6,648,000	5,290,000	5,536,000
Wine	2,940,000	2,570,000	2,662,000	2,940,000	2,570,000	2,662,000
Table	825,000	643,000	757,000	825,000	643,000	757,000
Raisin ¹	2,883,000	2,077,000	2,117,000	2,883,000	2,077,000	2,117,000
GA	2,600	3,200	3,300	2,300	2,900	3,000
MI	61,000	70,400	75,000	61,000	70,400	75,000
MO	1,950	2,200	2,800	1,950	2,200	2,800
NY	139,000	128,000	205,000	137,000	125,000	204,000
NC	950	1,500	1,900	950	1,500	1,900
OH	6,900	6,100	9,200	6,800	6,000	9,100
OR	18,500	14,700	17,900	18,500	14,700	17,900
PA	61,000	54,000	88,000	61,000	54,000	88,000
SC	500	300	360	365	275	330
WA	319,000	222,000	265,000	319,000	222,000	265,000
US	7,290,900	5,819,950	6,230,360	7,287,365	5,816,405	6,228,830
	Price per Ton			Value of Utilized Production		
	1997	1998	1999	1997	1998	1999
	<i>Dollars</i>	<i>Dollars</i>	<i>Dollars</i>	<i>1,000 Dollars</i>	<i>1,000 Dollars</i>	<i>1,000 Dollars</i>
AZ	588.00	751.00	801.00	14,694	17,276	16,821
AR	586.00	497.00	473.00	3,225	2,202	2,268
CA						
All Types	434.00	457.00	495.00	2,882,760	2,416,637	2,737,805
Wine	598.00	581.00	585.00	1,756,935	1,491,908	1,556,405
Table	448.00	499.00	551.00	369,420	320,693	417,431
Raisin ¹	262.00	291.00	361.00	756,405	604,036	763,969
GA	933.00	1,110.00	1,170.00	2,147	3,210	3,500
MI	293.00	293.00	286.00	17,873	20,660	21,484
MO	479.00	531.00	584.00	934	1,169	1,635
NY	292.00	316.00	290.00	40,024	39,499	59,174
NC	968.00	1,030.00	1,200.00	920	1,538	2,274
OH	288.00	331.00	341.00	1,961	1,984	3,103
OR	1,120.00	1,180.00	1,300.00	20,720	17,346	23,270
PA	268.00	280.00	281.00	16,320	15,093	24,714
SC	1,220.00	1,520.00	570.00	445	417	188
WA	390.00	482.00	432.00	124,410	107,004	114,480
US	429.00	455.00	483.00	3,126,433	2,644,035	3,010,716

¹ Fresh equivalent of dried and not dried.

**Grapes: Fresh and Processed Utilization, and Price
by Type, State and United States, 1997-99**

Utilization, State, and Type	Fresh and Processed Utilization					
	Quantity			Price per Ton		
	1997	1998	1999	1997	1998	1999
	<i>Tons</i>	<i>Tons</i>	<i>Tons</i>	<i>Dollars</i>	<i>Dollars</i>	<i>Dollars</i>
Fresh						
AZ	14,000	12,800	12,800	850.00	1,160.00	1,120.00
AR	1,900	1,070	800	860.00	633.00	620.00
CA						
All Types	915,000	761,000	868,000	601.00	620.00	652.00
Wine	45,000	42,000	45,000	250.00	250.00	275.00
Table	595,000	489,000	583,000	554.00	607.00	659.00
Raisin	275,000	230,000	240,000	759.00	715.00	704.00
GA	1,200	1,600	1,000	1,200.00	1,600.00	1,500.00
MI	200	400	500	900.00	900.00	800.00
MO	100	100	150	533.00	540.00	651.00
NY	3,000	2,000	2,000	790.00	500.00	600.00
OH	100	200	200	716.00	672.00	520.00
PA	1,000	1,000	1,000	600.00	465.00	615.00
Oth Sts	615	625	1,121	1,100.00	1,430.00	1,270.00
US	937,115	780,795	887,571	607.00	631.00	660.00
Processed						
AZ	11,000	10,200	8,200	254.00	238.00	303.00
AR	3,600	3,360	4,000	442.00	454.00	443.00
CA						
All Types	5,733,000	4,529,000	4,668,000	407.00	429.00	465.00
Wine	2,895,000	2,528,000	2,617,000	603.00	586.00	590.00
Table	230,000	154,000	174,000	173.00	155.00	191.00
Raisin	2,608,000	1,847,000	1,877,000	210.00	238.00	317.00
GA	1,100	1,300	2,000	643.00	500.00	1,000.00
MI	60,800	70,000	74,500	291.00	290.00	283.00
MO	1,850	2,100	2,650	476.00	531.00	580.00
NY	134,000	123,000	202,000	281.00	313.00	287.00
OH	6,700	5,800	8,900	282.00	319.00	337.00
OR ¹	18,500	14,700	17,900	1,120.00	1,180.00	1,300.00
PA	60,000	53,000	87,000	262.00	276.00	277.00
WA	319,000	222,000	265,000	390.00	482.00	432.00
Oth Sts	700	1,150	1,109	980.00	921.00	936.00
US	6,350,250	5,035,610	5,341,259	403.00	427.00	454.00

¹ Includes small quantities sold fresh.

**Grapes: Fresh and Processed Value by Type,
State and United States, 1997-99**

Utilization, State, and Type	Fresh and Processed Utilization		
	Value of Utilized Production		
	1997	1998	1999
	<i>1,000 Dollars</i>	<i>1,000 Dollars</i>	<i>1,000 Dollars</i>
Fresh			
AZ	11,900	14,848	14,336
AR	1,634	677	496
CA			
All Types	549,605	471,773	565,532
Wine	11,250	10,500	12,375
Table	329,630	296,823	384,197
Raisin	208,725	164,450	168,960
GA	1,440	2,560	1,500
MI	180	360	400
MO	53	54	98
NY	2,370	1,000	1,200
OH	72	134	104
PA	600	465	615
Oth Sts	679	896	1,424
US	568,533	492,767	585,705
Processed			
AZ	2,794	2,428	2,485
AR	1,591	1,525	1,772
CA			
All Types	2,333,155	1,944,864	2,172,273
Wine	1,745,685	1,481,408	1,544,030
Table	39,790	23,870	33,234
Raisin	547,680	439,586	595,009
GA	707	650	2,000
MI	17,693	20,300	21,084
MO	881	1,115	1,537
NY	37,654	38,499	57,974
OH	1,889	1,850	2,999
OR ¹	20,720	17,346	23,270
PA	15,720	14,628	24,099
WA	124,410	107,004	114,480
Oth Sts	686	1,059	1,038
US	2,557,900	2,151,268	2,425,011

¹ Includes small quantities sold fresh.

**Grapes: Processed Utilization, Use, and Price
by Type, State and United States, 1997-99**

Use and State	Processed Utilization					
	Quantity			Price per Ton		
	1997	1998	1999	1997	1998	1999
	<i>Tons</i>	<i>Tons</i>	<i>Tons</i>	<i>Dollars</i>	<i>Dollars</i>	<i>Dollars</i>
Canned						
CA						
Raisin	44,000	36,000	35,000	268.00	270.00	270.00
US	44,000	36,000	35,000	268.00	270.00	270.00
Juice ^{1 2}						
MI	58,200	67,500	71,500	268.00	272.00	265.00
NY	90,000	87,000	152,000	258.00	281.00	267.00
OH	5,700	5,000	7,500	245.00	261.00	265.00
PA	54,000	41,500	74,000	252.00	269.00	268.00
WA	257,000	152,000	195,000	250.00	280.00	260.00
Oth Sts	450	250	2,050	450.00	364.00	239.00
US	465,350	353,250	502,050	254.00	277.00	264.00
Wine						
CA						
All Types	3,893,000	3,171,000	3,187,000	495.00	500.00	520.00
Wine	2,895,000	2,528,000	2,617,000	603.00	586.00	590.00
Table	212,000	136,000	150,000	169.00	150.00	187.00
Raisin	786,000	507,000	420,000	185.00	164.00	200.00
GA	1,000	1,300	2,000	627.00	500.00	1,000.00
MI	2,600	2,500	3,000	800.00	775.00	700.00
MO	1,800	2,050	2,600	480.00	535.00	583.00
NY	44,000	36,000	50,000	328.00	392.00	348.00
OH	1,000	800	1,400	492.00	679.00	725.00
OR ²	18,500	14,700	17,900	1,120.00	1,180.00	1,300.00
PA	6,000	11,500	13,000	350.00	303.00	325.00
WA	62,000	70,000	70,000	972.00	922.00	910.00
Oth Sts	4,500	4,910	3,409	549.00	574.00	743.00
US	4,034,400	3,314,760	3,350,309	503.00	510.00	530.00
Dried						
(Fr Basis)						
AZ	10,500	9,600	7,900	238.00	221.00	290.00
CA						
All Types	1,796,000	1,322,000	1,446,000	219.00	265.00	351.00
Table	18,000	18,000	24,000	220.00	197.00	218.00
Raisin	1,778,000	1,304,000	1,422,000	219.00	266.00	353.00
US	1,806,500	1,331,600	1,453,900	219.00	265.00	351.00

¹ Includes small quantities of other processed (jam, jelly, etc.).

² Includes small quantities for other uses.

**Concord Grapes: Processed Utilization by State
and United States, 1997-99**

State	Processed Utilization		
	1997	1998	1999
	<i>Tons</i>	<i>Tons</i>	<i>Tons</i>
MI	45,200	53,800	57,300
MO	230	225	350
NY	96,600	89,400	154,500
OH	5,600	4,700	6,900
PA	54,000	48,000	75,600
WA	242,500	143,000	183,000
Oth Sts	310	1,510	2,015
US	444,440	340,635	479,665

**Niagara Grapes: Processed Utilization by State
and United States, 1997-99**

State	Processed Utilization		
	1997	1998	1999
	<i>Tons</i>	<i>Tons</i>	<i>Tons</i>
MI	13,400	13,700	14,400
NY	12,800	10,000	17,200
OH	300	300	400
PA	4,100	3,100	6,500
WA	14,500	9,000	12,000
US	45,100	36,100	50,500

**All Pears: Bearing Acreage, Yield, Production, and Utilization
by State and United States, 1997-99¹**

State and Year	Bearing Acreage	Yield Per Acre ²	Production		Utilization	
			Total	Utilized	Fresh	Processed
	<i>Acres</i>	<i>Tons</i>	<i>Tons</i>	<i>Tons</i>	<i>Tons</i>	<i>Tons</i>
CA						
1997	20,000	15.60	312,000	312,000		
1998	19,300	15.90	307,000	307,000		
1999	19,300	17.70	341,000	341,000		
CO						
1997			2,600	2,580		
1998			3,500	3,325		
1999			500	490		
CT						
1997			1,200	1,200	1,200	
1998			1,100	1,100	1,100	
1999			1,050	950	950	
MI						
1997	900	4.44	4,000	4,000		
1998	900	5.60	5,040	4,800		
1999	850	5.88	5,000	4,900		
NY						
1997	2,000	4.00	8,000	8,000		
1998	2,000	5.75	11,500	10,000		
1999	2,000	6.25	12,500	11,300		
OR						
1997	17,800	14.30	255,000	254,500		
1998	17,800	13.80	245,000	244,600		
1999	17,800	12.70	226,000	225,500		
PA						
1997	1,000	4.00	4,000	4,000		
1998	1,000	6.10	6,100	6,100		
1999	1,000	4.10	4,100	4,000		
UT						
1997	180	3.89	700	650	650	
1998	180	5.00	900	870	870	
1999	180	1.67	300	295		
WA						
1997	24,400	18.60	455,000	455,000		
1998	24,400	16.00	390,000	390,000		
1999	24,400	17.60	430,000	430,000		
US ³						
1997	66,880	15.60	1,042,500	1,041,930	572,310	469,620
1998	66,180	14.70	970,140	967,795	513,795	454,000
1999	66,120	15.40	1,020,450	1,018,435	541,175	477,260

¹ Missing data not published to avoid disclosure of individual operations.

² Yield is based on total production.

³ Processed mostly canned but includes small quantities dried and other uses not published separately to avoid disclosure of individual operations.

**All Pears: Price and Value by State
and United States, 1997-99¹**

State and Year	Price per Ton			Value of Production		
	Fresh	Processed Exc. Dried	All	Fresh	Processed Inc. Dried	All
	<i>Dollars</i>	<i>Dollars</i>	<i>Dollars</i>	<i>1,000 Dollars</i>	<i>1,000 Dollars</i>	<i>1,000 Dollars</i>
CA						
1997			273.00			85,184
1998			264.00			81,201
1999			216.00			73,526
CO						
1997			295.00			762
1998			449.00			1,494
1999			657.00			322
CT						
1997	700.00		700.00	840		840
1998	775.00		775.00	853		853
1999	775.00		775.00	736		736
MI						
1997			250.00			1,000
1998			271.00			1,302
1999			265.00			1,300
NY						
1997			384.00			3,070
1998			375.00			3,754
1999			388.00			4,390
OR						
1997			278.00			70,707
1998			338.00			82,712
1999			420.00			94,696
PA						
1997			552.00			2,208
1998			351.00			2,142
1999			425.00			1,700
UT						
1997	586.00		586.00	381		381
1998	307.00		307.00	267		267
1999			458.00			135
WA						
1997			272.00			123,670
1998			277.00			107,886
1999			284.00			122,139
US ²						
1997	329.00	213.00	276.00	188,022	99,800	287,822
1998	373.00	198.00	291.00	191,427	90,184	281,611
1999	391.00	184.00	294.00	211,542	87,402	298,944

¹ Missing data not published to avoid disclosure of individual operations.

² Processed mostly canned but includes small quantities dried and other uses not published separately to avoid disclosure of individual operations.

**Pears: Bearing Acreage, Yield, Production, and Utilization
by Type, State, and United States, 1997-99**

Type, State and Year	Bearing Acreage	Yield Per Acre ¹	Production		Utilization	
			Total	Utilized	Fresh	Processed
	<i>Acres</i>	<i>Tons</i>	<i>Tons</i>	<i>Tons</i>	<i>Tons</i>	<i>Tons</i>
Bartlett ²						
CA						
1997	15,600	18.10	282,000	282,000	68,000	214,000
1998	15,000	18.50	277,000	277,000	53,000	224,000
1999	15,000	20.70	311,000	311,000	84,000	227,000
OR						
1997	5,000	15.00	75,000	74,500	33,500	41,000
1998	5,000	13.00	65,000	64,600	29,600	35,000
1999	5,000	13.20	66,000	65,500	26,500	39,000
WA						
1997	11,200	18.30	205,000	205,000	50,000	155,000
1998	11,200	14.30	160,000	160,000	43,000	117,000
1999	11,200	18.80	210,000	210,000	51,000	159,000
Total						
1997	31,800	17.70	562,000	561,500	151,500	410,000
1998	31,200	16.10	502,000	501,600	125,600	376,000
1999	31,200	18.80	587,000	586,500	161,500	425,000
Other ^{3 4}						
CA						
1997	4,400	6.82	30,000	30,000		
1998	4,300	6.98	30,000	30,000		
1999	4,300	6.98	30,000	30,000		
OR						
1997	12,800	14.10	180,000	180,000		
1998	12,800	14.10	180,000	180,000		
1999	12,800	12.50	160,000	160,000		
WA						
1997	13,200	18.90	250,000	250,000		
1998	13,200	17.40	230,000	230,000		
1999	13,200	16.70	220,000	220,000		
Total						
1997	30,400	15.10	460,000	460,000	405,000	55,000
1998	30,300	14.50	440,000	440,000	370,000	70,000
1999	30,300	13.50	410,000	410,000	364,500	45,500

¹ Yield is based on total production.

² Processed mostly canned but includes small quantities dried and other uses not published separately to avoid disclosure of individual operations.

³ Missing data not published to avoid disclosure of individual operations.

⁴ Processed mostly juice, but includes small quantities canned and other uses not published separately to avoid disclosure of individual operations.

**Pears: Price and Value by Type, State,
and United States, 1997-99**

Type, State and Year	Price per Ton			Value of Production		
	Fresh	Processed Exc. Dried	All	Fresh	Processed Inc. Dried	All
	<i>Dollars</i>	<i>Dollars</i>	<i>Dollars</i>	<i>1,000 Dollars</i>	<i>1,000 Dollars</i>	<i>1,000 Dollars</i>
Bartlett ¹						
CA						
1997	318.00	247.00	263.00	21,624	52,430	74,054
1998	309.00	231.00	246.00	16,377	51,744	68,121
1999	143.00	232.00	208.00	12,012	52,664	64,676
OR						
1997	389.00	225.00	299.00	13,032	9,225	22,257
1998	507.00	203.00	342.00	15,007	7,105	22,112
1999	512.00	151.00	297.00	13,568	5,889	19,457
WA						
1997	412.00	214.00	262.00	20,600	33,170	53,770
1998	460.00	228.00	290.00	19,780	26,676	46,456
1999	443.00	159.00	228.00	22,593	25,281	47,874
Total						
1997	365.00	232.00	267.00	55,256	94,825	150,081
1998	407.00	227.00	273.00	51,164	85,525	136,689
1999	298.00	198.00	225.00	48,173	83,834	132,007
Other ^{2 3}						
CA						
1997			371.00			11,130
1998			436.00			13,080
1999			295.00			8,850
OR						
1997			269.00			48,450
1998			337.00			60,600
1999			470.00			75,239
WA						
1997			280.00			69,900
1998			267.00			61,430
1999			338.00			74,265
Total						
1997	310.00	70.90	281.00	125,580	3,900	129,480
1998	358.00	38.60	307.00	132,410	2,700	135,110
1999	430.00	39.00	386.00	156,579	1,775	158,354

¹ Processed mostly canned but includes small quantities dried and other uses not published separately to avoid disclosure of individual operations.

² Processed mostly juice but includes small quantities canned and other uses not published separately to avoid disclosure of individual operations.

³ Missing data not published to avoid disclosure of individual operations.

**Peaches: Bearing Acreage and Yield by Type,
State, and United States, 1997-99**

State	Bearing Acreage			Yield per Acre ¹		
	1997	1998	1999	1997	1998	1999
	<i>Acres</i>	<i>Acres</i>	<i>Acres</i>	<i>Pounds</i>	<i>Pounds</i>	<i>Pounds</i>
AL	3,500	3,500	3,400	7,140	4,570	5,880
AR	2,700	2,800	2,800	5,300	4,460	4,290
CA						
All	66,200	67,400	67,800	28,500	25,600	26,900
Clingstone	31,000	30,400	29,800	37,000	34,400	35,500
Freestone	35,200	37,000	38,000	21,000	18,400	20,100
CO	1,900	1,900	1,900	3,680	10,500	1,580
CT	330	330	330	6,970	6,970	6,670
GA	20,000	20,000	18,000	8,000	3,500	6,110
ID	790	790	820	9,490	11,400	9,760
IL	1,600	1,600	1,600	7,810	9,380	11,900
IN	650	650	650	3,850	5,850	4,460
KS	180	180	160	1,110	2,780	5,000
KY	420	380	280	1,430	4,740	6,430
LA	450	430	350	2,440	3,260	2,290
MD	1,100	1,100	1,100	8,820	9,550	8,000
MA	320	320	330	6,250	5,630	6,060
MI	5,000	5,000	4,600	11,000	8,600	5,000
MO	1,500	1,600	1,600	6,330	5,630	6,560
NJ	8,000	8,000	8,000	8,130	8,750	8,750
NY	1,600	1,600	1,600	7,500	6,250	8,750
NC	1,600	1,550	1,550	6,250	16,100	18,100
OH	1,000	900	900	6,000	7,560	9,670
OK	1,400	1,400	1,400	1,430	14,300	10,700
OR	950	950	950	6,110	8,420	7,370
PA	5,500	5,500	5,500	12,700	11,800	13,600
SC	15,500	16,500	16,500	10,300	8,480	9,700
TN	900	800	600	3,890	4,000	5,170
TX	8,000	8,500	8,000	2,500	2,820	1,630
UT	1,300	1,300	1,300	6,230	5,690	4,770
VA	1,560	1,560	1,560	5,770	8,970	9,620
WA	2,500	2,500	2,500	18,400	20,800	20,400
WV	1,300	1,300	1,300	8,460	9,770	9,690
US	157,750	160,340	157,380	16,600	15,000	16,000

¹ Yield is based on total production.

**Peaches: Total and Utilized Production, by Type,
State, and United States, 1997-99**

State	Total Production			Utilized Production		
	1997	1998	1999	1997	1998	1999
	<i>Million Pounds</i>	<i>Million Pounds</i>	<i>Million Pounds</i>	<i>Million Pounds</i>	<i>Million Pounds</i>	<i>Million Pounds</i>
AL	25.0	16.0	20.0	24.0	15.0	19.0
AR	14.3	12.5	12.0	14.3	11.1	10.5
CA						
All	1,887.0	1,726.0	1,822.0	1,839.0	1,711.7	1,791.8
Clingstone	1,148.0	1,045.0	1,059.0	1,100.0	1,030.7	1,028.8
Freestone	739.0	681.0	763.0	739.0	681.0	763.0
CO	7.0	20.0	3.0	6.5	18.5	2.9
CT	2.3	2.3	2.2	2.3	2.3	2.2
GA	160.0	70.0	110.0	145.0	65.0	105.0
ID	7.5	9.0	8.0	7.1	8.7	7.9
IL	12.5	15.0	19.0	10.0	13.5	17.0
IN	2.5	3.8	2.9	2.4	3.7	2.8
KS	0.2	0.5	0.8	0.2	0.5	0.8
KY	0.6	1.8	1.8	0.5	1.5	1.5
LA	1.1	1.4	0.8	1.0	1.4	0.7
MD	9.7	10.5	8.8	9.0	10.2	8.8
MA	2.0	1.8	2.0	2.0	1.7	2.0
MI	55.0	43.0	23.0	55.0	42.5	23.0
MO	9.5	9.0	10.5	9.5	9.0	10.5
NJ	65.0	70.0	70.0	65.0	68.0	60.0
NY	12.0	10.0	14.0	11.5	8.5	12.0
NC	10.0	25.0	28.0	10.0	25.0	28.0
OH	6.0	6.8	8.7	5.8	6.5	7.9
OK	2.0	20.0	15.0	1.8	18.0	13.5
OR	5.8	8.0	7.0	5.4	7.9	6.9
PA	70.0	65.0	75.0	70.0	65.0	73.0
SC	160.0	140.0	160.0	120.0	105.0	130.0
TN	3.5	3.2	3.1	3.0	3.0	3.0
TX	20.0	24.0	13.0	16.0	19.0	11.0
UT	8.1	7.4	6.2	7.6	7.0	6.2
VA	9.0	14.0	15.0	8.0	12.0	12.0
WA	46.0	52.0	51.0	46.0	52.0	51.0
WV	11.0	12.7	12.6	10.5	12.4	12.3
US	2,624.6	2,400.7	2,525.4	2,508.4	2,325.6	2,433.2

**Peaches: Price and Value by Type, State,
and United States, 1997-99**

State	Price per Pound			Value of Utilized Production		
	1997	1998	1999	1997	1998	1999
	<i>Dollars</i>	<i>Dollars</i>	<i>Dollars</i>	<i>1,000 Dollars</i>	<i>1,000 Dollars</i>	<i>1,000 Dollars</i>
AL	0.302	0.456	0.297	7,248	6,840	5,643
AR	0.290	0.328	0.340	4,142	3,639	3,575
CA						
All	0.127	0.129	0.133	232,937	220,017	238,797
Clingstone	0.130	0.110	0.113	143,000	112,862	115,740
Freestone	0.122	0.157	0.161	89,937	107,155	123,057
CO	0.661	0.488	0.640	4,297	9,036	1,855
CT	0.700	0.700	0.650	1,610	1,610	1,430
GA	0.243	0.345	0.373	35,235	22,440	39,171
ID	0.574	0.436	0.472	4,075	3,791	3,726
IL	0.406	0.433	0.389	4,060	5,846	6,613
IN	0.545	0.318	0.369	1,308	1,177	1,033
KS	0.420	0.470	0.420	84	235	336
KY	0.300	0.375	0.430	150	563	645
LA	0.453	0.710	0.880	453	994	616
MD	0.430	0.300	0.471	3,870	3,060	4,145
MA	0.700	0.800	0.800	1,400	1,360	1,600
MI	0.263	0.272	0.237	14,450	11,546	5,440
MO	0.350	0.396	0.417	3,325	3,564	4,379
NJ	0.449	0.449	0.433	29,185	30,518	25,992
NY	0.461	0.416	0.454	5,296	3,538	5,454
NC	0.350	0.380	0.360	3,500	9,500	10,080
OH	0.400	0.416	0.447	2,320	2,704	3,531
OK	0.224	0.412	0.493	403	7,416	6,656
OR	0.529	0.316	0.365	2,855	2,498	2,516
PA	0.337	0.317	0.322	23,587	20,620	23,505
SC	0.208	0.260	0.204	24,900	27,258	26,536
TN	0.380	0.450	0.470	1,140	1,350	1,410
TX	0.350	0.520	0.620	5,600	9,880	6,820
UT	0.270	0.270	0.328	2,052	1,890	2,034
VA	0.280	0.300	0.290	2,240	3,600	3,480
WA	0.420	0.515	0.444	19,335	26,774	22,653
WV	0.293	0.264	0.303	3,080	3,270	3,723
US	0.177	0.192	0.190	444,137	446,534	463,394

**Peaches: Fresh and Processed Utilization, and Price
by Type, State and United States, 1997-99¹**

Use and State	Fresh and Processed Utilization					
	Quantity			Price per Unit		
	1997	1998	1999	1997	1998	1999
	<i>Million Pounds</i>	<i>Million Pounds</i>	<i>Million Pounds</i>	<i>Dollars per Pound</i>	<i>Dollars per Pound</i>	<i>Dollars per Pound</i>
Fresh						
AL	24.0	15.0	19.0	0.302	0.456	0.297
CA						
Freestone	498.1	431.6	508.3	0.138	0.198	0.198
CT	2.3	2.3	2.2	0.700	0.700	0.650
IL	10.0	13.5	17.0	0.406	0.433	0.389
IN	2.4	3.7	2.8	0.545	0.318	0.369
KY	0.5	1.5	1.5	0.299	0.375	0.430
LA	1.0	1.4	0.7	0.453	0.710	0.880
MA	2.0	1.7	2.0	0.700	0.800	0.800
MI ²		31.5	11.0		0.315	0.320
MO	9.5	9.0	10.5	0.350	0.396	0.417
OH	5.8	6.5	7.9	0.400	0.416	0.447
OK	1.8	18.0	13.5	0.224	0.412	0.493
SC	110.0	91.0	114.0	0.216	0.280	0.216
TN	3.0	3.0	3.0	0.380	0.450	0.470
TX	16.0	19.0	11.0	0.350	0.520	0.620
UT	7.6	7.0		0.270	0.270	
VA	8.0	12.0	12.0	0.280	0.300	0.290
Oth Sts ²	424.8	332.8	363.7	0.350	0.411	0.403
US	1,126.8	1,000.5	1,100.1	0.244	0.306	0.290
	<i>Million Pounds</i>	<i>Million Pounds</i>	<i>Million Pounds</i>	<i>Dollars per Ton</i>	<i>Dollars per Ton</i>	<i>Dollars per Ton</i>
Processed						
CA						
Clingstone	1,100.0	1,030.7	1,028.8	260.00	219.00	225.00
Freestone ³	240.9	249.4	254.7	194.00	186.00	190.00
MI ²		11.0	12.0		295.00	320.00
SC	10.0	14.0	16.0	228.00	254.00	239.00
Oth Sts ²	30.7	20.0	21.6	283.00	209.00	219.00
US ⁴	1,381.6	1,325.1	1,333.1	246.00	211.00	217.00

¹ Missing data included in Other States to avoid disclosure of individual operations.

² MI fresh and processed data included in Other States in 1997.

³ CA Freestone quantity and value include dried, price excludes dried.

⁴ US quantity, price, and value include dried.

**Peaches: Fresh and Processed Value by State
and United States, 1997-99¹**

Use and State	Fresh and Processed Utilization		
	Value of Utilized Production		
	1997	1998	1999
	<i>1,000 Dollars</i>	<i>1,000 Dollars</i>	<i>1,000 Dollars</i>
Fresh			
AL	7,248	6,840	5,643
CA			
Freestone	68,738	85,457	100,643
CT	1,610	1,610	1,430
IL	4,060	5,846	6,613
IN	1,308	1,177	1,033
KY	150	563	645
LA	453	994	616
MA	1,400	1,360	1,600
MI ²		9,923	3,520
MO	3,325	3,564	4,379
OH	2,320	2,704	3,531
OK	403	7,416	6,656
SC	23,760	25,480	24,624
TN	1,140	1,350	1,410
TX	5,600	9,880	6,820
UT	2,052	1,890	
VA	2,240	3,600	3,480
Oth Sts ²	148,651	136,829	146,404
US	274,458	306,483	319,047
Processed			
CA			
Clingstone	143,000	112,862	115,740
Freestone ³	21,199	21,698	22,414
MI ²		1,623	1,920
SC	1,140	1,778	1,912
Oth Sts ²	4,340	2,090	2,361
US ⁴	169,679	140,051	144,347

¹ Missing data included in Other States to avoid disclosure of individual operations.

² MI fresh and processed data included in Other States in 1997.

³ CA Freestone quantity and value include dried, price excludes dried.

⁴ US quantity, price, and value include dried.

**Peaches: Processed Utilization, and Price by Use,
State, and United States, 1997-99**

Use and State	Processed Utilization					
	Quantity			Price per Ton		
	1997	1998	1999	1997	1998	1999
	<i>Million Pounds</i>	<i>Million Pounds</i>	<i>Million Pounds</i>	<i>Dollars</i>	<i>Dollars</i>	<i>Dollars</i>
Canned						
CA						
Clingstone	1,058.0	939.0	952.4	264.00	230.00	232.00
Freestone	21.3	25.5	21.6	246.00	215.00	216.00
Oth Sts	28.5	20.7	22.0	298.00	278.00	274.00
US	1,107.8	985.2	996.0	265.00	231.00	233.00
Frozen						
CA						
Freestone	178.9	163.8	174.2	190.00	200.00	201.00
Oth Sts	22.1	22.0	29.9	243.00	251.00	228.00
US	201.0	185.8	204.1	196.00	206.00	205.00
Dried						
CA						
Freestone	34.1	25.0	31.4	68.00	67.50	73.00
US	34.1	25.0	31.4	68.00	67.50	73.00
Other ¹						
Oth Sts	38.7	129.1	101.6	128.00	102.00	125.00
US	38.7	129.1	101.6	128.00	102.00	125.00

¹ Pickled, wine, brandy, and baby food.

**Hawaii Crops: Acreage Harvested, Yield, Utilized
Production, and Utilization, 1997-99**

Crop and Year	Acreage Harvested	Yield Per Acre	Utilized Production	Utilization	
				Fresh	Processed
	<i>Acres</i>	<i>1,000 Pounds</i>	<i>1,000 Pounds</i>	<i>1,000 Pounds</i>	<i>1,000 Pounds</i>
Bananas					
1997	950	14.4	13,700	13,700	
1998	1,420	14.8	21,000	21,000	
1999	1,420	17.3	24,500	24,500	
Guavas					
1997	730	21.8	15,900		15,900
1998	710	20.6	14,600		14,600
1999	630	17.0	10,700		10,700
Papayas					
1997	1,985	19.5	38,800	35,700	3,100
1998	2,120	18.8	39,900	35,600	4,300
1999	1,940	21.9	42,400	39,400	3,000
	<i>Acres</i>	<i>1,000 Pounds</i>	<i>Tons</i>	<i>Tons</i>	<i>Tons</i>
Pineapples ¹					
1997	19,900		324,000	103,000	221,000
1998	21,000		332,000	111,000	221,000
1999	21,000		352,000	122,000	230,000

¹ Acreage is total acres in crop, not harvested acreage. Yield is not estimated. Production and processed utilization on a fresh weight basis.

Hawaii Crops: Price and Value, 1997-99

Crop and Year	Price			Value of Production		
	Fresh	Processed	All	Fresh	Processed	Total
	<i>Dollars per Pound</i>	<i>Dollars per Pound</i>	<i>Dollars per Pound</i>	<i>1,000 Dollars</i>	<i>1,000 Dollars</i>	<i>1,000 Dollars</i>
Bananas						
1997	0.380		0.380	5,206		5,206
1998	0.350		0.350	7,350		7,350
1999	0.350		0.350	8,575		8,575
Guavas						
1997		0.122	0.122		1,940	1,940
1998		0.122	0.122		1,781	1,781
1999		0.091	0.091		974	974
Papayas						
1997	0.529	0.030	0.489	18,885	93	18,978
1998	0.350	0.030	0.316	12,460	129	12,589
1999	0.402	0.030	0.376	15,839	90	15,929
	<i>Dollars per Ton</i>	<i>Dollars per Ton</i>	<i>Dollars per Ton</i>			
Pineapples ¹						
1997	618.00	127.00	283.00	63,654	28,067	91,721
1998	575.00	131.00	279.00	63,825	28,951	92,776
1999	594.00	126.00	288.00	72,468	28,980	101,448

¹ Processed price is for fresh fruit delivered to processing plant door. Fresh price is for fruit at wholesale establishments for local sales and at shippers dock for mainland and foreign sales.

**Apples and Berries: Unutilized Production by State
and United States, 1997-99**

Crop and State	Unharvested Production			Harvested Not Sold		
	1997	1998	1999	1997	1998	1999
	<i>Million Pounds</i>	<i>Million Pounds</i>	<i>Million Pounds</i>	<i>Million Pounds</i>	<i>Million Pounds</i>	<i>Million Pounds</i>
Apples						
AZ	0.1		1.2	0.8	1.0	1.1
AR		0.8	1.1	0.1	0.1	0.1
CO	1.0	5.0			1.0	
CT	1.0	0.5	1.0			
GA	1.0	3.0	1.0			
ID		38.0			2.0	
IL	4.0	9.0	15.0	3.0	1.0	1.0
IN	1.5	3.5	5.0	0.5	0.5	0.5
IA	5.4	0.6		0.1		
KS	0.9	0.6	1.4	0.2	0.1	0.6
KY	0.5	1.6	1.3	0.2	0.4	0.7
ME	1.5	1.5	9.0	0.5		2.0
MD	1.5	0.6				
MA	1.5	2.5	7.0			1.0
MI		40.0	20.0			
MN	3.6	3.8	3.9	0.9	1.3	1.7
MO	2.5	2.3	2.7		2.7	0.3
NH	0.5		1.5			
NJ					1.0	
NY		100.0	30.0		10.0	
NC	2.0	50.0	10.0			10.0
OH		2.0	6.0		3.0	3.0
OR		37.0	5.0			
PA	3.0			7.0	7.0	
RI	0.2	0.4	0.7			
SC	3.6	1.0	1.0	0.4	2.0	1.0
TN	1.0	3.0	1.0	0.5	0.5	0.5
UT	1.0	14.0				
VT	1.0	1.5	8.0			
VA	8.0	11.0	10.0			
WA		500.0				
WV	3.0	2.0	5.0	2.0	1.0	
WI	3.0	10.7	12.0	1.0	3.4	4.8
US	52.3	845.9	159.8	17.2	38.0	28.3
	<i>1,000 Pounds</i>	<i>1,000 Pounds</i>	<i>1,000 Pounds</i>	<i>1,000 Pounds</i>	<i>1,000 Pounds</i>	<i>1,000 Pounds</i>
Berries						
Red Raspberries						
WA	3,400	3,000	1,300	3,400	2,000	700
Blueberries						
AL	330	520	200	30	40	40
AR	300	210	70	100		10
FL	350	350	250	50	50	50
GA	1,000	1,500	1,000			
IN	100	100	100			
NJ	1,000	1,000	2,000			
NY	100	100	300			
NC		800				
WA		200	200			
US	3,180	4,780	4,120	180	90	100

**Peaches and Tart Cherries: Unutilized Production
by State and United States, 1997-99**

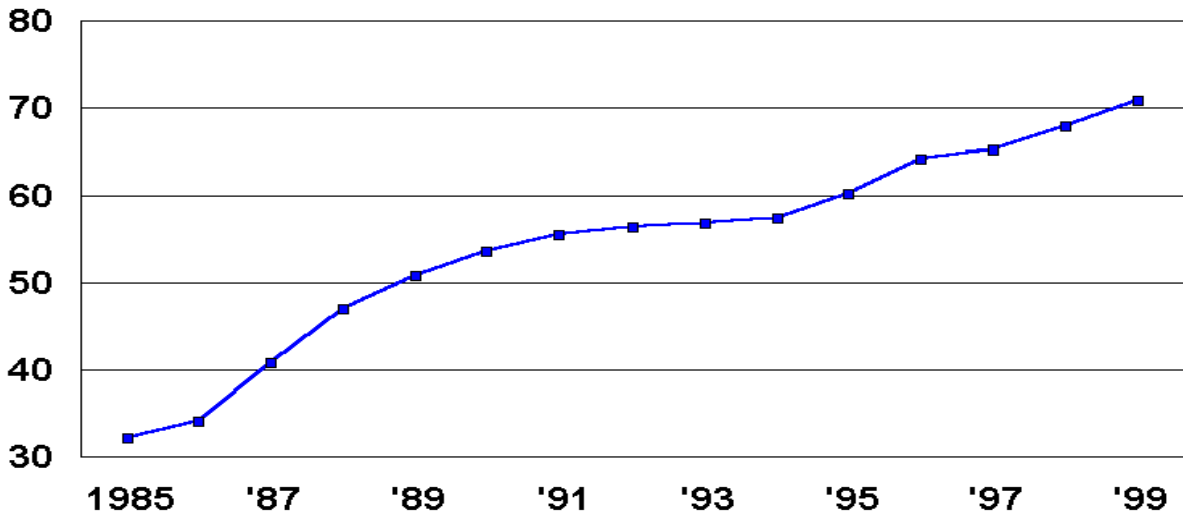
Crop and State	Unharvested Production			Harvested Not Sold		
	1997	1998	1999	1997	1998	1999
	<i>Million Pounds</i>	<i>Million Pounds</i>	<i>Million Pounds</i>	<i>Million Pounds</i>	<i>Million Pounds</i>	<i>Million Pounds</i>
Peaches						
AL	1.0	1.0	1.0			
AR		1.3	1.3		0.1	0.2
CA						
Clingstone				48.0	14.3	30.2
CO	0.3	1.0		0.2	0.5	0.1
GA	5.0			10.0	5.0	5.0
ID				0.4	0.3	0.1
IL	2.0	1.0	1.0	0.5	0.5	1.0
IN	0.1	0.1	0.1			
KS						
KY	0.1	0.3	0.3			
LA				0.1		0.1
MD		0.2		0.7	0.1	
MA					0.1	
MI		0.3			0.2	
NJ		1.0	8.0		1.0	2.0
NY	0.5	1.5	1.5			0.5
OH	0.1	0.2	0.8	0.1	0.1	
OK	0.1	1.9	1.4	0.1	0.1	0.1
OR	0.4	0.1	0.1			
PA			2.0			
SC	13.0	5.0	5.0	27.0	30.0	25.0
TN	0.5	0.2	0.1			
TX	4.0	4.0	2.0		1.0	
UT	0.2	0.3		0.3	0.1	
VA	1.0	2.0	2.0			1.0
WA						
WV	0.3	0.3	0.2	0.2		0.1
US	28.6	21.7	26.8	87.6	53.4	65.4
Cherries (Tart)						
CO	0.1	0.1				
MI	4.0				34.0	
NY	1.0	1.0		0.3	0.8	
OR	0.3	0.1				
UT	2.0	6.0		1.5		
WI	0.3	0.4	2.0	0.1	0.1	
US	7.7	7.6	2.0	1.9	34.9	

**Miscellaneous Crops: Unutilized Production
by State and United States, 1997-99**

Crop and State	Unharvested Production			Harvested Not Sold		
	1997	1998	1999	1997	1998	1999
	<i>Tons</i>	<i>Tons</i>	<i>Tons</i>	<i>Tons</i>	<i>Tons</i>	<i>Tons</i>
Apricots						
CA	9,600	10,400				
UT		10				
US	9,600	10,410				
Cherries (Sweet)						
ID					130	230
MI		1,500			500	500
MT	200	120	15	30	40	15
NY	20	50	50	10		
OR		500	500			
PA		125	50		25	
UT	20					
WA	2,000					
US	2,240	2,295	615	40	695	745
Grapes						
AR	1,000	100	90		20	10
GA	300	300	300			
MI						
NY	1,000	3,000	900	1,000		100
NC						
OH	100	100	100			
PA						
SC	125	20	25	10	5	5
US	2,525	3,520	1,415	1,010	25	115
Kiwifruit						
CA				3,200	3,600	3,000
Pears						
CO	15	120	10	5	55	
CT			50			50
MI		85	100		155	
NY		1,500	700			500
OR	400	400	500	100		
PA			100			
UT	25	30	3	25		2
US	440	2,135	1,463	130	210	552
Prunes & Plums						
ID	100			200	200	30
MI						250
OR	1,500	600	500			500
US	1,600	600	500	200	200	780

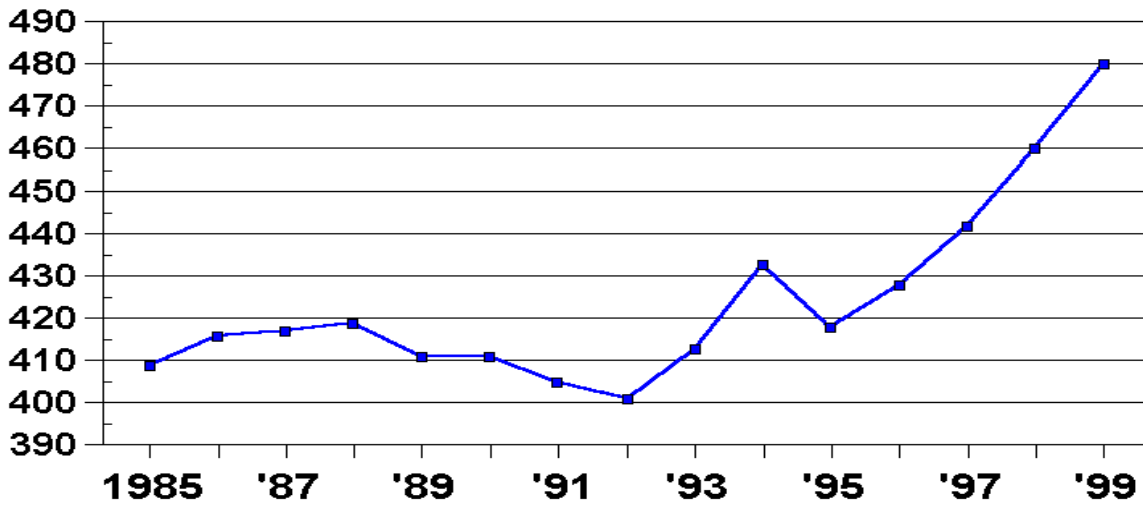
Pistachio Acreage California

(000) Acres



Almond Acreage California

(000) Acres



**Nut Crops: Bearing Acreage and Yield by Crop,
State, and United States, 1997-99**

Crop and State	Bearing Acreage			Yield per Acre ¹		
	1997	1998	1999	1997	1998	1999
	<i>Acres</i>	<i>Acres</i>	<i>Acres</i>	<i>Tons (In-Shell Basis)</i>	<i>Tons (In-Shell Basis)</i>	<i>Tons (In-Shell Basis)</i>
Hazelnuts						
OR	28,600	29,100	28,800	1.63	0.53	1.31
WA	400	430	400	0.88	0.23	0.75
US	29,000	29,530	29,200	1.62	0.52	1.30
Walnuts (English)						
CA	193,000	193,000	191,000	1.39	1.18	1.48
				<i>Pounds (In-Shell Basis)</i>	<i>Pounds (In-Shell Basis)</i>	<i>Pounds (In-Shell Basis)</i>
Macadamia Nuts						
HI	19,200	19,200	18,900	3,020	2,990	2,990
Pistachios						
CA	65,400	68,000	71,000	2,750	2,760	1,730
				<i>Pounds (Shelled Basis)</i>	<i>Pounds (Shelled Basis)</i>	<i>Pounds (Shelled Basis)</i>
Almonds						
CA	442,000	460,000	480,000	1,720	1,130	1,730

¹ Yield is based on utilized production.

**Nut Crops: Production and Price by Crop,
State, and United States, 1997-99**

Crop and State	Production			Price per Unit		
	1997	1998	1999	1997	1998	1999
	<i>Tons (In-Shell Basis)</i>	<i>Tons (In-Shell Basis)</i>	<i>Tons (In-Shell Basis)</i>	<i>Dollars per Ton</i>	<i>Dollars per Ton</i>	<i>Dollars per Ton</i>
Hazelnuts						
OR	46,650	15,400	37,700	899.00	964.00	891.00
WA	350	100	300	940.00	960.00	900.00
US	47,000	15,500	38,000	899.00	964.00	891.00
Walnuts (English)						
CA	269,000	227,000	283,000	1,430.00	1,050.00	810.00
	1,000 Pounds					
	<i>(In-Shell Basis)</i>	<i>(In-Shell Basis)</i>	<i>(In-Shell Basis)</i>	<i>Dollars per Pound</i>	<i>Dollars per Pound</i>	<i>Dollars per Pound</i>
Macadamia Nuts						
HI	58,000	57,500	56,500	0.750	0.650	0.670
Pistachios						
CA	180,000	188,000	123,000	1.130	1.030	1.310
	1,000 Pounds					
	<i>(Shelled Basis)</i>	<i>(Shelled Basis)</i>	<i>(Shelled Basis)</i>			
Almonds ¹						
CA	759,000	520,000	830,000	1.56	1.41	0.87

¹ Price and value are based on the edible portion of the crop only. Production includes inedible quantities of no value as follows: 1997 - 15.0 million pounds, 1998 - 21.0 million pounds, and 1999 - 33.2 million pounds.

Nut Crops: Use by Crop, State, and United States, 1997-99

Crop and State	Production					
	Sold In-Shell			Sold Shelled ¹		
	1997	1998	1999	1997	1998	1999
	<i>Tons</i>	<i>Tons</i>	<i>Tons</i>	<i>Tons</i>	<i>Tons</i>	<i>Tons</i>
Hazelnuts						
OR	22,000	11,550	20,700	24,650	3,850	17,000
WA	200	75	100	150	25	200
US	22,200	11,625	20,800	24,800	3,875	17,200
Walnuts (English)						
CA	77,000	53,000	89,000	192,000	174,000	194,000
	<i>1,000 Pounds</i>	<i>1,000 Pounds</i>	<i>1,000 Pounds</i>	<i>1,000 Pounds</i>	<i>1,000 Pounds</i>	<i>1,000 Pounds</i>
Pecans						
US	36,500	19,000	40,500	298,500	127,400	365,600
	<i>Marketable In-Shell</i>	<i>Marketable In-Shell</i>	<i>Marketable In-Shell</i>	<i>Shelling Stock ¹</i>	<i>Shelling Stock ¹</i>	<i>Shelling Stock ¹</i>
Pistachios						
CA	137,000	138,000	105,000	43,000	50,000	18,000

¹ In-shell basis.

**Nut Crops: Value and Meat Production by Crop,
State, and United States, 1997-99**

Crop and State	Value of Utilized Production		
	1997	1998	1999
	<i>1,000 Dollars</i>	<i>1,000 Dollars</i>	<i>1,000 Dollars</i>
Hazelnuts			
OR	41,938	14,846	33,591
WA	329	96	270
US	42,267	14,942	33,861
Walnuts (English)			
CA	384,670	238,350	229,230
Macadamia Nuts			
HI	43,500	37,375	37,855
Pistachios			
CA	203,400	193,640	161,130
Almonds ¹			
CA	1,160,640	703,590	693,216
	Meat Production of Nuts Sold Shelled		
	1997	1998	1999
	<i>Tons</i>	<i>Tons</i>	<i>Tons</i>
Hazelnuts			
OR	8,950	1,550	6,600
WA	60	10	80
US	9,010	1,560	6,680
Walnuts (English)			
CA	79,000	72,000	82,000
	<i>1,000 Pounds</i>	<i>1,000 Pounds</i>	<i>1,000 Pounds</i>
Pecans			
US	132,000	57,000	144,400
Pistachios			
CA	17,900	20,800	8,400

¹ Price and value are based on the edible portion of the crop only. Production includes inedible quantities of no value as follows: 1997 - 15.0 million pounds, 1998 - 21.0 million pounds, and 1999 - 33.2 million pounds.

**Pecans: Utilized Production and Price by Variety,
State, and United States, 1997-99**

Variety and State	Utilized Production			Price per Pound		
	1997	1998	1999	1997	1998	1999
	<i>1,000 Pounds</i>	<i>1,000 Pounds</i>	<i>1,000 Pounds</i>	<i>Dollars</i>	<i>Dollars</i>	<i>Dollars</i>
Improved Varieties ¹						
AL	7,000	3,500	7,000	0.760	0.954	0.850
AZ	18,500	13,000	22,800	1.250	1.590	1.190
AR	1,200	300	1,500	0.750	1.150	0.620
CA	3,000	1,700	1,900	1.320	1.660	1.270
FL	600	200	1,100	1.000	1.100	0.900
GA	77,000	35,000	85,000	0.904	1.240	0.890
LA	2,000	3,000	4,000	0.900	1.000	1.000
MS	2,600	800	3,500	0.844	0.870	0.900
NM	45,000	32,000	52,000	0.940	1.490	1.200
NC	900	1,500	800	0.950	1.000	1.100
OK	3,000	200	3,000	0.760	1.220	0.880
SC	2,100	800	1,800	0.840	1.240	0.840
TX	40,000	20,000	35,000	0.863	1.300	1.000
US	202,900	112,000	219,400	0.933	1.350	1.010
Native and Seedling						
AL	6,000	1,500	6,000	0.518	0.674	0.500
AR	2,300	250	2,300	0.630	0.880	0.570
FL	1,200	1,100	2,600	0.600	0.750	0.650
GA	23,000	5,000	35,000	0.591	1.110	0.590
KS	4,200	50	5,000	0.670	0.880	0.680
LA	10,000	13,000	18,000	0.480	0.600	0.550
MS	1,400	400	1,500	0.583	0.660	0.550
NC	600	1,000	400	0.650	0.800	0.750
OK	32,000	1,800	60,000	0.550	0.680	0.550
SC	1,400	300	900	0.610	1.020	0.750
TX	50,000	10,000	55,000	0.477	0.850	0.600
US	132,100	34,400	186,700	0.530	0.772	0.577
All Pecans						
AL	13,000	5,000	13,000	0.648	0.870	0.688
AZ	18,500	13,000	22,800	1.250	1.590	1.190
AR	3,500	550	3,800	0.671	1.030	0.590
CA	3,000	1,700	1,900	1.320	1.660	1.270
FL	1,800	1,300	3,700	0.733	0.804	0.724
GA	100,000	40,000	120,000	0.832	1.220	0.803
KS	4,200	50	5,000	0.670	0.880	0.680
LA	12,000	16,000	22,000	0.550	0.675	0.632
MS	4,000	1,200	5,000	0.753	0.800	0.795
NM	45,000	32,000	52,000	0.940	1.490	1.200
NC	1,500	2,500	1,200	0.830	0.920	0.983
OK	35,000	2,000	63,000	0.568	0.734	0.566
SC	3,500	1,100	2,700	0.748	1.180	0.810
TX	90,000	30,000	90,000	0.649	1.150	0.756
US	335,000	146,400	406,100	0.774	1.210	0.814

¹ Budded, grafted, or topworked varieties.

**Pecans: Value of Production by Variety,
State, and United States, 1997-99**

Variety and State	Value of Production		
	1997	1998	1999
	<i>1,000 Dollars</i>	<i>1,000 Dollars</i>	<i>1,000 Dollars</i>
Improved Varieties ¹			
AL	5,320	3,339	5,950
AZ	23,125	20,670	27,132
AR	900	345	930
CA	3,960	2,822	2,413
FL	600	220	990
GA	69,608	43,400	75,650
LA	1,800	3,000	4,000
MS	2,194	696	3,150
NM	42,300	47,680	62,400
NC	855	1,500	880
OK	2,280	244	2,640
SC	1,764	992	1,512
TX	34,520	26,000	35,000
US	189,226	150,908	222,647
Native and Seedling			
AL	3,108	1,011	3,000
AR	1,449	220	1,311
FL	720	825	1,690
GA	13,593	5,550	20,650
KS	2,814	44	3,400
LA	4,800	7,800	9,900
MS	816	264	825
NC	390	800	300
OK	17,600	1,224	33,000
SC	854	306	675
TX	23,850	8,500	33,000
US	69,994	26,544	107,751
All Pecans			
AL	8,428	4,350	8,950
AZ	23,125	20,670	27,132
AR	2,349	565	2,241
CA	3,960	2,822	2,413
FL	1,320	1,045	2,680
GA	83,201	48,950	96,300
KS	2,814	44	3,400
LA	6,600	10,800	13,900
MS	3,010	960	3,975
NM	42,300	47,680	62,400
NC	1,245	2,300	1,180
OK	19,880	1,468	35,640
SC	2,618	1,298	2,187
TX	58,370	34,500	68,000
US	259,220	177,452	330,398

¹ Budded, grafted, or topworked varieties.

Definition of Terms

Apples, Commercial Crop refers to orchards of 100 or more bearing age trees.

Bearing Acreage is determined by the mature fruit area in a given orchard. Bearing age is a function of many factors including variety, rootstock, year planted, etc. It is primarily based upon periodic orchard surveys. In non-survey years, acreage is based on trends, county extension service data, end-of-year production surveys, and other indications.

Prices are a marketing year average for all methods of sale. For a crop sold for both fresh market and processing, the **Marketing Year Average Price (MYA)** is a weighted average of the fresh and processing price.

Prices for fresh fruit are the average prices producers receive at the point of first sale. This is commonly referred to as the **average price as sold**. Since the point of first sale is not the same for all producers, prices for the various methods of sale are weighted by the proportionate quantity sold. For example, if in a given State part of the fruit is sold F.O.B. packed by growers, part is sold as bulk fruit at the packinghouse door, and some is sold retail at roadside stands, the fresh fruit **average price as sold** is a weighted average of the average price for each method of sale. The exception is fresh fruit sales in California, Washington, New York (apples only) and Oregon (except peaches) which are equivalent returns at packinghouse door. The equivalent packinghouse returns represent adjusted prices.

F.O.B. packed prices are adjusted to an equivalent incoming packinghouse door price by subtracting all costs that accumulate between the incoming packinghouse door and the F.O.B. price. These costs include grading, packing, inspecting fees, selling, and other costs.

Prices for fruit sold for processing are equivalent returns for fruit delivered to the processing plant door except for cranberries, California olives, and clingstone peaches which are priced at the first delivery point.

Crop value estimates in this report cover the marketing season or crop year and should not be confused with cash receipts from these crops which are on a calendar year.

Total Production is the quantity actually harvested plus quantities which would have been acceptable for fresh market or processing but were not harvested because of economic or natural reasons.

Unutilized Production is the difference between total and utilized production which is fruit not harvested for economic or natural reasons and harvested fruit not sold or utilized.

Utilization refers to first utilization, not necessarily final utilization. For example, frozen fruit includes some fruit that may be later used for making preserves. Grade-outs for fresh market fruit which are processed are included in the processing quantity. Fruit graded-out from canning or freezing and utilized for juice is included with juice.

Utilized Production is the amount sold plus the quantities used at home or held in storage.

Yield per Acre is based on total production which includes unharvested production and fruit harvested but not sold due to marketing conditions.

State Value of Sales Computation Procedure

The following procedure is used to compute State values for all commodity groups:

Fresh Market Value = Fresh Market MYA
Times
Fresh Market Utilization

Process Market Value = Process Market MYA
Times
Process Market Utilization

"All" Sales Value = Fresh Market Value
Plus
Process Market Value

"All" Sales MYA = "All" Sales Value
Divided By
"All" Sales Utilization

For commodities with components not identified by market channel, substitute breakdown name for fresh/processing market and use the same procedure.

U.S. MYA Computation Procedure

The procedure used for computation of U.S. Marketing Year Average Prices follows:

Fresh Market MYA = Fresh Market Value For All States
Divided By
Fresh Market Utilization For All States

Process Market MYA = Process Market Value For All States
Divided By
Process Market Utilization For All States

"All" Sales MYA = Sales Value For All States
Divided By
Sales Utilization For All States

Marketing Seasons for Noncitrus Fruits ¹

Apples: All South Atlantic States, Kentucky, Tennessee, Indiana, Illinois, Missouri, Arkansas, New Mexico, and California, June 1 to May 31; all other States, July 1 to June 30, except Washington and Oregon where the bulk of the crop is marketed August 1 to July 31.

Apricots: **Fresh Fruit** - May 25 to August 20.
Canning - June 15 to August 15.
Dried - California, June 20 to August 20.

Avocados: California - November 1 to November 30 of the following year.
Florida - June 20 to Feb 28.
Hawaii - January 1 to December 31 with peak harvest from March 1 to April 30.

Bananas: January 1 to December 31.

Cherries: **Fresh Fruit** - Sweet varieties, May 1 to August 15;
Tart varieties, June 15 to August 20.

Cranberries: September 5 to December 20.

Dates: August 15 to March 15.

Figs: **Fresh Fruit** - June 5 to October 30.
Canning - August 1 to October 15.
Dried - California, June 20 to October 31.

Grapes: **Fresh Fruit** - California, May 25 to April 30;
Arizona, June 5 to July 15;
All other States, July 10 to October 31.

Crushed for Juice, Wine and Brandy - August 1 to December 15.
Dried for Raisins - California, September 1 to May 30.

Guavas: January 1 to December 31 with peak harvest from September 1 to October 31.

Kiwifruit: November 1 to April 30.

Nectarines: June 10 to August 31.

Olives: September 25 to March 15.

¹ See footnote at end of table.

Marketing Seasons for Noncitrus Fruits ¹ (continued)

Papayas: January 1 to December 31 with peak harvest from May 15 to July 15 and September 15 to December 15.

Peaches: **Fresh Fruit** - Georgia and South Carolina, May 20 to August 31; Other South Atlantic States, South Central States, and California, June 1 to September 30; New England States, New York, Michigan, and Idaho, August 1 to September 30; all other States, July 1 to September 30.

Canning - California, July 1 to September 10.

Dried - California, August 1 to October 10.

Pears: **Fresh Fruit** - California, July 1 to April 30; Washington and Oregon, August 10 to May 31; Other States, July 1 to December 15.

Canning and Dried - California, Washington and Oregon, August 1 to November 30.

Pineapples: January 1 to December 31 with peak harvest from March 1 to July 31.

Plums: **Fresh Fruit** - California, May 25 to September 30.

Canning - California, June 1 to September 30.

Prunes: **Dried** - California, August 1 to April 31.

Prunes and Plums: **Fresh Fruit and Canning** - Idaho, Michigan, Oregon and Washington, August 10 to October 20.

Marketing Seasons for Tree Nuts ¹

Almonds: August 5 to November 15.

Hazelnuts (Filberts): October 1 to September 30.

Macadamia Nuts: January 1 to December 31 with peak harvest from August 1 to December 31.

Pecans: September 30 to March 15.

Pistachios: September 1 to October 31.

Walnuts: September 15 to December 30.

¹ For detail by States, see Agricultural Handbook No. 186, "Fruits and Tree Nuts, Blooming, Harvesting, and Marketing Dates", Dec 1975.

Information Contacts

Listed below are the commodity specialists in the Crops Branch of the National Agricultural Statistics Service to contact for additional information.

Mark Harris, Chief	(202) 720-2127
Field Crops Section	
Brad Parks, Head	(202) 720-2127
Rhonda Brandt - Corn, Proso Millet	(202) 720-9526
Herman Ellison - Peanuts, Rice	(202) 720-7688
Lance Honig - Wheat, Rye	(202) 720-8068
Jay V. Johnson - Cotton, Cotton Ginnings	(202) 720-5944
Roy Karkosh - Hay, Sorghum, Barley	(202) 690-3234
Mark E. Miller - Oats, Sugar Crops, Weekly Crop Weather	(202) 720-7621
Jerry Ramirez - Soybeans, Minor Oilseeds	(202) 720-7369
Fruit, Vegetable & Special Crops Section	
Jim Smith, Head	(202) 720-2127
Arvin Budge - Potatoes, Sweet Potatoes	(202) 720-4285
Dave DeWalt - Citrus, Tropical Fruits	(202) 720-5412
Debbie Flippin - Fresh and Processing Vegetables	(202) 720-3250
Steve Gunn - Apples, Cherries, Cranberries, Prunes, Plums	(202) 720-4488
Jeffrey Kissel - Noncitrus Fruits, Mint, Dry Beans & Peas, Mushrooms	(202) 690-0270
Keith Lacy - Berries, Grapes, Maple Syrup, Tobacco	(202) 720-7235
Kim Ritchie - Hops	(360) 902-1940
Dave Ranek - Nuts, Floriculture	(202) 720-4215
Biz Wallingsford - Fresh and Processing Vegetables, Onions, Strawberries	(202) 720-2157

The "Noncitrus Fruits and Nuts 2000 Summary" report will be released in January, 2001.

Index

	Page
Noncitrus Fruits and Tree Nuts	
Bearing Acreage, U.S	5
Bearing Acreage and Yield per Acre by Crop	2
Price and Value by Crop	4
Production Utilization, U.S.	5
Total and Utilized Production by Crop.	3
Noncitrus Fruits	
Apples, Commercial Crop	8, 60
Apricots	18, 24, 25, 62
Avocados	18
Bananas	58
Berries (excluding strawberries)	30, 60
California Dry Fruits	25
Cherries, Sweet	34,38,62
Cherries, Tart	36, 61
Cranberries	40
Dates	18
Figs	20, 24, 25
Grapes	25, 42, 62
Guavas	58
Hawaii Crops	58
Kiwifruit	20, 62
Nectarines	20
Olives	20, 24
Papayas	58
Peaches	25, 52, 61
Pears	25, 48, 62
Pineapples	58
Plums	20
Prunes (dried basis)	22,25
Prunes and Plums	22, 24, 62
Strawberries	26
Unutilized Production60
Tree Nuts	
Almonds	64
Hazelnuts	64
Macadamia Nuts	64
Pecans	66, 68
Pistachios	64
Walnuts	64
Definition of Terms	70
Information Contacts	74
Marketing Seasons	72
State Value of Sales Computation	71
U.S. MYA Computation	71

The United States Department of Agriculture (USDA) prohibits discrimination in all its programs on the basis of race, color, national origin, gender, religion, age, disability, political beliefs, sexual orientation, and marital or family status. (Not all prohibited bases apply to all programs.) Persons with disabilities who require alternative means for communication of program information (braille, large print, audiotape, etc.) should contact the USDA's TARGET Center at 202-720-2600 (voice and TDD).

To file a complaint of discrimination, write USDA, Director, Office of Civil Rights, Room 326-W, Whitten Building, 14th and Independence Avenue, SW, Washington, D.C., 20250-9410, or call 202-720-5964 (voice or TDD). USDA is an equal opportunity provider and employer.

ACCESS TO REPORTS!!

For your convenience, there are several ways to obtain NASS reports, data products, and services:

INTERNET ACCESS

All NASS reports are available free of charge on the worldwide Internet. For access, connect to the Internet and go to the NASS Home Page at: <http://www.usda.gov/nass/>. Select "Today's Reports" or Publications and then Reports by Calendar or Publications and then Search, by Title or Subject.

E-MAIL SUBSCRIPTION

There are two options for subscribing via e-mail. All NASS reports are available by subscription free of charge direct to your e-mail address. 1) Starting with the NASS Home Page at <http://www.usda.gov/nass/>, click on **Publications**, then click on the **Subscribe by E-mail** button which takes you to the page describing e-mail delivery of reports. Finally, click on **Go to the Subscription Page** and follow the instructions. 2) If you do NOT have Internet access, send an e-mail message to: usda-reports@usda.mannlib.cornell.edu. In the body of the message type the word: **list**.

AUTOFAX ACCESS

NASSFax service is available for some reports from your fax machine. Please call 202-720-2000, using the handset attached to your fax. Respond to the voice prompts. Document 0411 is a list of available reports.

PRINTED REPORTS OR DATA PRODUCTS

CALL OUR TOLL-FREE ORDER DESK: 800-999-6779 (U.S. and Canada)
Other areas, please call 703-834-0125 FAX: 703-834-0110
(Visa, MasterCard, check, or money order acceptable for payment.)

ASSISTANCE

For **assistance** with general agricultural statistics or further information about NASS or its products or services, contact the **Agricultural Statistics Hotline** at **800-727-9540**, 7:30 a.m. to 4:00 p.m. ET, or e-mail: nass@nass.usda.gov.