



United States
Department of
Agriculture

National
Agricultural
Statistics
Service



Fr Nt 1-3 (02)

Noncitrus Fruits and Nuts 2001 Summary

July 2002

USDA



Contents

	Page
Noncitrus Fruits and Tree Nuts	
Bearing Acreage, U.S	7
Bearing Acreage and Yield per Acre by Crop	4
Narrative	3
Price and Value by Crop	6
Production Utilization, U.S.	7
Total and Utilized Production by Crop.	5
Noncitrus Fruits	
Apples, Commercial Crop	10, 66
Apricots	20, 26, 27, 68
Avocados	20
Bananas	64
Berries (excluding strawberries)	32, 69
California Dry Fruits	27
Cherries, Sweet	38, 42, 68
Cherries, Tart	40, 42, 67
Cranberries	44, 67
Dates	20
Figs	22, 26, 27
Grapes	27, 46, 68
Guavas	64
Hawaii Crops	64
Kiwifruit	22, 68
Nectarines	22
Olives	22, 26
Papayas	64
Peaches	27, 52, 67
Pears	27, 60, 68
Pineapples	64
Plums	22
Prunes (dried basis)	24, 27
Prunes and Plums	24, 26, 68
Strawberries	28
Unutilized Production	66
Tree Nuts	
Almonds	70
Hazelnuts	70
Macadamia Nuts	70
Pecans	72, 74
Pistachios	70
Walnuts	70
Definition of Terms	76
Information Contacts	80
Marketing Seasons	78
State Value of Utilized Production Computation	77
U.S. MYA Price Computation	77

This page intentionally left blank.

2001 Noncitrus Fruit Utilized Production Down 11 Percent, Value Down 1 Percent

In 2001, the Nation's utilized production of the leading noncitrus fruit crops totaled 16.8 million tons, down 11 percent from the 2000 utilized production. Utilized production decreased from 2000 for all crops except cultivated blueberries, red raspberries, California raspberries, sweet cherries, tart cherries, dates, nectarines, olives, papayas, pears, and California plums.

Value of utilized production for noncitrus fruit crops totaled 7.87 billion dollars, down 1 percent from 2000. The value of apples increased 11 percent and the value of peaches increased 1 percent. However, the value of grapes decreased 6 percent. The value of strawberries was virtually unchanged from 2000.

Highlights

Utilized apple production for 2001 was estimated at 9.41 billion pounds, down 9 percent from the 2000 level. Production in the Central States increased as a result of favorable spring growing conditions but was more than offset by production decreases in the Western and Eastern States.

Utilized grape production for 2001 totaled 6.55 million tons, down 15 percent from the 2000 crop. The California crop, which accounts for 91 percent of the 2001 U.S. utilized grape production, was down 16 percent from the previous year. Also for California, wine type production decreased 9 percent from 2000, raisin type production fell 25 percent, and table type production was 8 percent lower. Utilized production decreased from the previous year in almost all States with California leading the way. The only States increasing from 2000 were Washington and Oregon while Georgia was unchanged.

Utilized peach production in 2001 was estimated at 2.34 billion pounds, down 7 percent from the previous year and 4 percent below 1999. The California crop, accounting for 72 percent of the U.S. utilized peach production, was down 7 percent from 2000. For California, Clingstone peaches were down 11 percent and Freestone peaches were down 2 percent from 2000.

Utilized pear production for 2001, at 968,300 tons, was up 2 percent from the previous year. Washington, at 447,000 tons and the top producing State, was up 10 percent. California, at 270,000 tons and the second largest producer, was down 9 percent from the previous season. Utilized pear production in Oregon, the third largest producing State, was up 5 percent from 2000.

U.S. Nut Production Up 21 Percent, Value Virtually Unchanged

The 2001 U.S. nut production (in-shell basis) rose to 1.31 million tons, a 21 percent increase from a year earlier. The pistachio crop totaled 80,500 tons dropping 34 percent from the record high crop of 121,500 tons realized in 2000. Almond production totaled 677,000 tons, up 18 percent from 2000. Hazelnut production for the 2001 crop totaled 49,500 tons, more than double the 2000 crop of 22,500 tons. Walnut production totaled 305,000 tons, a 28 percent increase from the previous year. Macadamia production, at 28,000 tons, was up 12 percent from 2000. Pecan production totaled 169,300 tons, a 61 percent increase from 2000.

The 2001 U.S. value of utilized nut production increased to 1.50 billion dollars, virtually unchanged from the previous 2 years. The almond value was up 10 percent from 2000. Almonds make up 49 percent of the 2001 total nut value. Pistachios decreased in value by 35 percent due to the drop in production. Hazelnut value increased 73 percent to 34.7 million dollars from the 2000 value. The pecan crop translated into a 16 percent decrease in value due to a 48 percent drop in price per pound. The macadamia value increased 10 percent from last season, to 32.5 million dollars.

**Noncitrus Fruits and Nuts: Bearing Acreage and Yield per Acre
by Crop, United States, 1999-2001**

Crop	Bearing Acreage			Yield per Acre		
	1999	2000	2001	1999	2000	2001
	<i>Acres</i>	<i>Acres</i>	<i>Acres</i>	<i>Tons</i>	<i>Tons</i>	<i>Tons</i>
Noncitrus Fruits						
Apples	460,800	444,700	430,200	11.50	12.00	11.20
Apricots	20,380	20,380	19,430	4.44	4.75	4.24
Avocados	65,130	65,220	64,130	2.81	3.67	3.29
Bananas (HI) ¹	1,420	1,460	1,490	8.66	9.95	9.40
Blackberries (OR) ^{1 2}	5,850	6,140	6,160	3.37	3.66	3.38
Blueberries						
Cultivated ¹	39,330	40,320	40,380	2.21	2.25	2.42
Wild (ME) ³						
Boysenberries ¹	1,700	1,710	1,610	2.88	2.63	1.87
Loganberries (OR) ¹	80	80	70	2.38	2.88	0.79
Raspberries ¹						
Black (OR)	1,100	1,150	1,200	1.32	1.67	1.59
Red	12,500	12,400	12,200	3.32	3.46	3.73
All (CA)	1,800	2,000	2,300	5.80	5.65	5.40
Cherries, Sweet	58,000	61,450	68,220	3.73	3.36	3.37
Cherries, Tart	39,900	39,880	38,770	3.21	3.62	4.76
Cranberries	37,500	36,600	34,200	8.48	7.81	7.79
Dates (CA)	4,900	4,800	4,500	4.53	3.63	4.38
Figs (CA)	14,700	15,400	14,000	3.22	3.63	2.84
Grapes	904,700	946,450	930,400	6.89	8.12	7.04
Guavas (HI) ¹	630	680	610	8.50	11.70	12.60
Kiwifruit (CA)	5,300	5,300	5,300	5.09	6.42	4.87
Nectarines (CA)	35,500	35,500	36,500	7.72	7.52	7.53
Olives (CA)	35,300	36,000	36,000	4.02	1.47	3.72
Papayas (HI) ¹	1,940	1,650	1,950	10.90	16.50	14.10
Peaches	157,430	155,380	151,520	8.00	8.35	8.05
Pears	66,120	66,060	64,630	15.40	14.60	15.60
Pineapples (HI) ⁴	21,000	20,700	20,100			
Plums (CA)	40,000	38,000	37,000	4.90	5.18	5.68
Prunes (CA)	83,000	86,000	86,000	6.22	7.92	4.88
Prunes & Plums ⁵	4,210	4,110	4,410	5.44	5.82	4.81
Strawberries ¹	46,760	47,650	46,100	19.60	20.50	18.10
Total	2,166,980	2,197,170	2,159,380			
Tree Nuts						
Almonds (CA) ⁶	480,000	500,000	525,000	1.40	1.15	1.29
Hazelnuts	29,200	28,650	28,100	1.37	0.79	1.76
Macadamias (HI)	18,900	17,700	17,800	1.50	1.41	1.58
Pecans ³						
Pistachios (CA)	71,000	74,600	78,000	0.87	1.63	1.03
Walnuts (CA)	191,000	193,000	196,000	1.48	1.24	1.56
Total	790,100	813,950	844,900			

¹ Harvested acreage. Yield based on utilized production.

² Cultivated.

³ Bearing acreage and yield not calculated.

⁴ Acreage is total acres in crop, not harvested acreage. Yield is not estimated.

⁵ ID, MI, OR, and WA.

⁶ Yield based on in-shell basis. Shelling ratios are: 1999 - 0.620; 2000 - 0.613; 2001 - 0.613.

**Noncitrus Fruits and Nuts: Total and Utilized Production
by Crop, United States, 1999-2001**

Crop	Total Production			Utilized Production		
	1999	2000	2001	1999	2000	2001
	<i>1,000 Tons Fresh Equivalent</i>	<i>1,000 Tons Fresh Equivalent</i>	<i>1,000 Tons Fresh Equivalent</i>	<i>1,000 Tons Fresh Equivalent</i>	<i>1,000 Tons Fresh Equivalent</i>	<i>1,000 Tons Fresh Equivalent</i>
Noncitrus Fruits						
Apples	5,315.4	5,331.9	4,814.6	5,223.3	5,201.1	4,707.4
Apricots	90.5	96.9	82.5	90.5	87.8	75.4
Avocados	183.3	239.3	211.3	183.3	239.3	211.3
Bananas (HI) ¹				12.3	14.5	14.0
Blackberries (OR) ²	19.7	22.5	21.8	19.7	22.5	20.8
Blueberries						
Cultivated	89.1	92.7	100.1	87.0	90.8	97.9
Wild (ME)	33.1	55.5	37.6	33.1	55.5	37.6
Boysenberries	4.9	4.5	3.0	4.9	4.5	3.0
Loganberries (OR)	0.2	0.2	0.1	0.2	0.2	0.1
Raspberries						
Black (OR)	1.5	1.9	2.0	1.5	1.9	1.9
Red	42.5	43.3	46.0	41.5	42.9	45.5
All (CA)	10.4	11.3	12.4	10.4	11.3	12.4
Cherries, Sweet	216.1	206.5	230.1	213.3	204.0	219.4
Cherries, Tart	128.1	144.3	184.7	127.1	140.7	154.1
Cranberries	317.9	285.6	266.5	317.9	279.0	239.2
Dates (CA)	22.2	17.4	19.7	22.2	17.4	19.7
Figs (CA)	47.3	55.9	39.8	47.3	55.9	39.8
Grapes	6,236.3	7,688.0	6,552.5	6,234.7	7,687.3	6,551.4
Guavas (HI) ¹				5.4	8.0	7.7
Kiwifruit (CA)	27.0	34.0	25.8	24.0	30.5	23.0
Nectarines (CA)	274.0	267.0	275.0	274.0	267.0	275.0
Olives (CA)	142.0	53.0	134.0	142.0	53.0	134.0
Papayas (HI) ¹				21.2	27.3	27.5
Peaches	1,262.8	1,300.0	1,220.7	1,216.7	1,254.4	1,171.5
Pears	1,015.5	967.2	1,005.8	1,013.4	949.2	968.3
Pineapples (HI) ¹				352.0	354.0	323.0
Plums (CA)	196.0	197.0	210.0	196.0	197.0	210.0
Prunes (CA)	516.2	681.1	420.0	478.5	625.1	378.0
Prunes & Plums ³	22.9	23.9	21.2	21.6	22.0	20.0
Strawberries ¹				916.3	978.7	833.2
Total				17,331.3	18,922.8	16,822.1
	<i>1,000 Tons In-Shell Equivalent</i>	<i>1,000 Tons In-Shell Equivalent</i>	<i>1,000 Tons In-Shell Equivalent</i>	<i>1,000 Tons In-Shell Equivalent</i>	<i>1,000 Tons In-Shell Equivalent</i>	<i>1,000 Tons In-Shell Equivalent</i>
Tree Nuts ¹						
Almonds (CA)				671.8	573.4	677.0
Hazelnuts				40.0	22.5	49.5
Macadamias (HI)				28.3	25.0	28.0
Pecans				203.1	104.9	169.3
Pistachios (CA)				61.5	121.5	80.5
Walnuts (CA)				283.0	239.0	305.0
Total				1,287.7	1,086.3	1,309.3

¹ Only utilized production estimated.

² Cultivated.

³ ID, MI, OR, and WA.

**Noncitrus Fruits and Nuts: Price and Value
by Crop, United States, 1999-2001**

Crop	Unit ¹	Price			Value of Utilized Production		
		1999	2000	2001	1999	2000	2001
		<i>Dollars</i>	<i>Dollars</i>	<i>Dollars</i>	<i>1,000 Dollars</i>	<i>1,000 Dollars</i>	<i>1,000 Dollars</i>
Noncitrus Fruits							
Apples	Lb	0.150	0.127	0.157	1,563,582	1,325,641	1,477,164
Apricots	Ton	391.00	369.00	352.00	35,377	32,346	26,549
Avocados	Ton	1,940.00	1,380.00	1,400.00	356,410	331,397	296,010
Bananas (HI)	Lb	0.350	0.360	0.380	8,575	10,440	10,640
Blackberries(OR) ²	Lb	0.689	0.477	0.415	27,134	21,437	17,267
Blueberries							
Cultivated	Lb	0.883	0.972	0.844	153,715	176,571	165,238
Wild (ME)	Lb	0.513	0.403	0.305	33,889	44,732	22,945
Boysenberries	Lb	0.706	0.581	0.689	6,917	5,225	4,133
Loganberries (OR)	Lb	1.030	0.643	0.455	392	296	50
Raspberries							
Black (OR)	Lb	1.890	1.480	0.452	5,486	5,687	1,724
Red	Lb	0.698	0.392	0.505	57,927	33,600	45,940
All (CA)	Lb	1.470	1.900	1.660	30,604	42,940	41,168
Cherries							
Sweet	Ton	1,100.00	1,340.00	1,230.00	234,879	274,225	270,104
Tart	Lb	0.218	0.187	0.186	55,505	52,488	57,210
Cranberries	Bbl	17.20	16.80	20.80	109,078	93,993	99,455
Dates (CA)	Ton	1,240.00	1,230.00	1,410.00	27,528	21,402	27,777
Figs (CA)	Ton	268.00	272.00	365.00	12,685	15,226	14,529
Grapes	Ton	469.00	403.00	446.00	2,926,910	3,096,436	2,921,299
Guavas (HI)	Lb	0.120	0.129	0.141	1,284	2,051	2,157
Kiwifruit (CA)	Ton	634.00	455.00	667.00	15,215	13,888	15,340
Nectarines (CA)	Ton	411.00	398.00	464.00	112,497	106,256	127,642
Olives (CA)	Ton	387.00	656.00	672.00	55,011	34,743	90,096
Papayas (HI)	Lb	0.376	0.294	0.265	15,929	16,007	14,598
Peaches	Lb	0.190	0.195	0.212	462,836	489,116	496,418
Pears	Ton	294.00	264.00	282.00	298,009	250,273	272,727
Pineapples (HI)	Ton	288.00	287.00	298.00	101,448	101,530	96,337
Plums (CA)	Ton	419.00	442.00	316.00	82,041	87,115	66,443
Prunes (CA)	Ton	861.00	770.00	750.00	142,065	154,770	101,250
Prunes & Plums ³	Ton	208.00	239.00	273.00	4,500	5,247	5,459
Strawberries	Cwt	61.80	55.50	65.10	1,133,412	1,085,590	1,085,405
Total					8,070,840	7,930,668	7,873,074
Almonds (CA) (Shelled)	Lb	0.86	0.97	0.90	687,742	666,487	731,880
Hazelnuts	Ton	890.00	891.00	701.00	35,603	20,039	34,700
Macadamias (HI)	Lb	0.670	0.590	0.580	37,855	29,500	32,480
Pecans	Lb	0.814	1.140	0.594	330,398	238,768	201,101
Pistachios (CA)	Lb	1.33	1.01	0.99	163,590	245,430	159,390
Walnuts (CA)	Ton	886.00	1,240.00	1,120.00	250,738	296,360	341,600
Total					1,505,926	1,496,584	1,501,151

¹ Ton refers to the 2,000 lb. short ton.

² Cultivated.

³ ID, MI, OR, and WA.

**Fruits and Nuts: Bearing Acreage,
United States, 1999-2001**

Year	Citrus Fruits ¹	Major Deciduous Fruits ²	Miscellaneous Noncitrus ³	Nuts ⁴	Total
	<i>Acres</i>	<i>Acres</i>	<i>Acres</i>	<i>Acres</i>	<i>Acres</i>
1999	1,111,600	1,870,040	296,940	790,100	4,068,680
2000	1,089,900	1,897,910	299,260	813,950	4,101,020
2001	1,081,100	1,867,080	292,300	844,900	4,085,380

¹ Grapefruit, K-Early Citrus, lemons, limes, oranges, tangelos, tangerines, and Temples.

² Commercial apples, apricots, cherries, grapes, nectarines, peaches, pears, plums, and prunes.

³ Avocados, bananas, berries, cranberries, dates, figs, guavas, kiwifruit, olives, papayas, pineapples, and strawberries.

⁴ Almonds, hazelnuts, macadamia nuts, pistachios, and walnuts.

**Noncitrus Fruits: Production Utilization,
United States, 1999-2001 ¹**

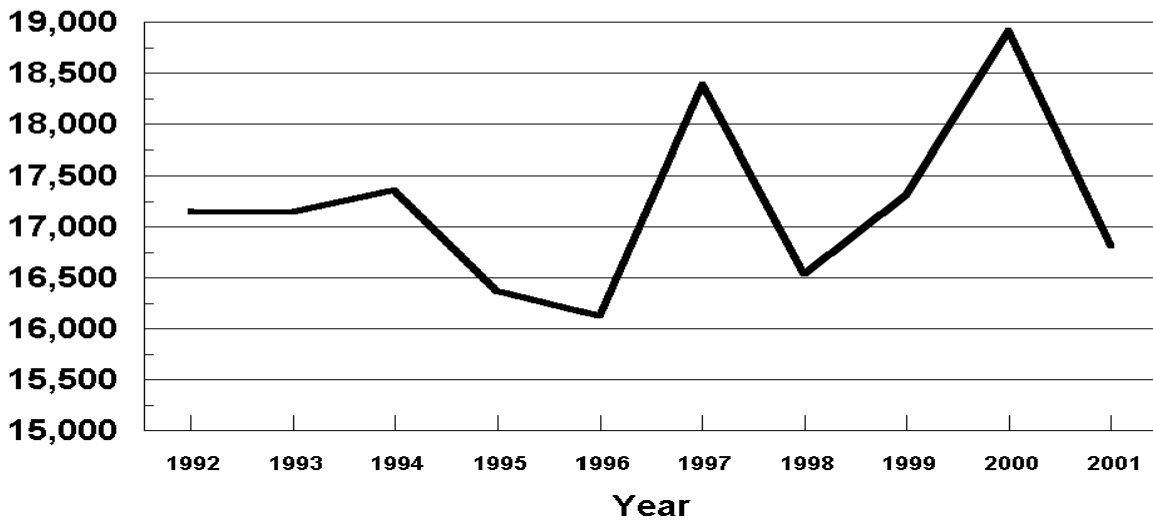
Year	Utilized Production	Fresh	Processed ²					
			Canned	Dried	Juice	Frozen	Wine	Other
	<i>1,000 Tons</i>	<i>1,000 Tons</i>	<i>1,000 Tons</i>	<i>1,000 Tons</i>	<i>1,000 Tons</i>	<i>1,000 Tons</i>	<i>1,000 Tons</i>	<i>1,000 Tons</i>
1999	17,331.3	6,673.7	1,985.6	2,149.7	1,886.8	719.4	3,350.7	247.5
2000	18,922.8	7,041.5	1,816.0	3,023.0	1,754.1	683.2	4,129.8	196.2
2001	16,822.1	6,521.6	1,885.3	2,281.8	1,479.3	671.0	3,568.5	175.4

¹ Cranberry quantity included in utilized production, excluded from fresh and processed breakdown.

² Processed strawberries are included in frozen.

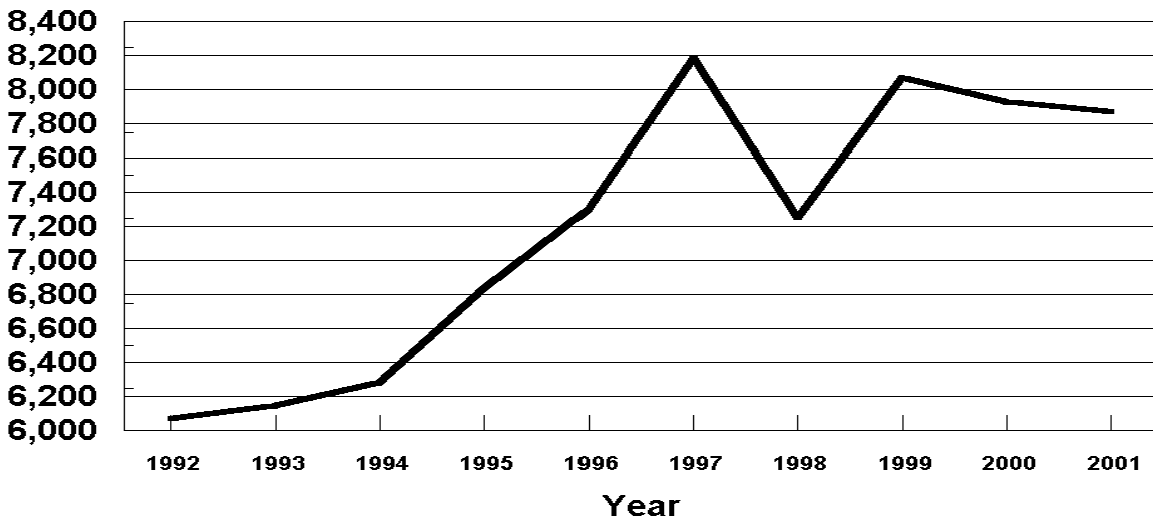
U.S. Noncitrus Fruits Utilized Production 1992 - 2001

1,000 Tons Fresh Equivalent



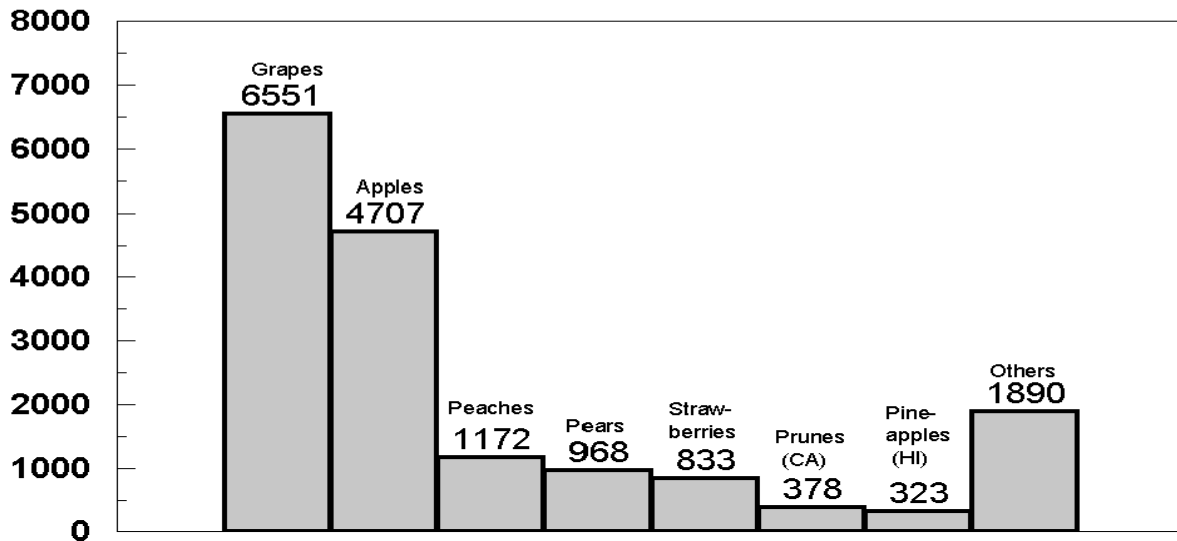
U.S. Noncitrus Fruits Value of Utilized Production 1992 - 2001

Million Dollars



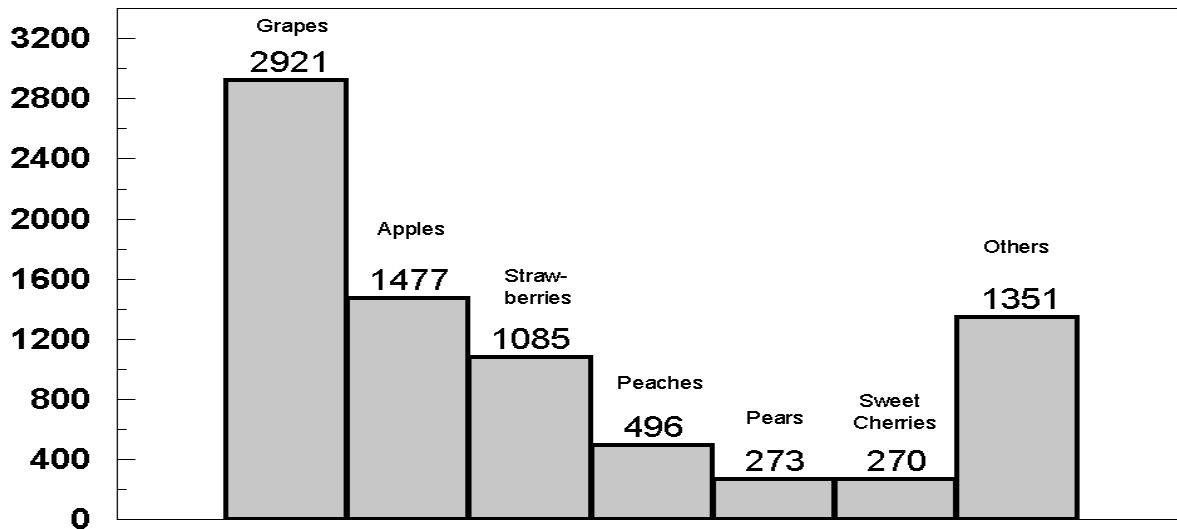
U.S. Noncitrus Fruits Utilized Production by Major Fruit, 2001

(000) Tons Fresh Equivalent



U.S. Noncitrus Fruits Value of Utilized Production by Major Fruit, 2001

Million Dollars



**Apples, Commercial: Bearing Acreage and Yield
by State and United States, 1999-2001**

State	Bearing Acreage			Yield per Acre ¹		
	1999	2000	2001	1999	2000	2001
	<i>Acres</i>	<i>Acres</i>	<i>Acres</i>	<i>Pounds</i>	<i>Pounds</i>	<i>Pounds</i>
AZ	3,900	3,900	2,000	8,790	24,400	2,700
AR	900	900	900	6,000	8,000	6,110
CA	35,000	31,000	29,000	25,600	21,000	24,100
CO	2,800	2,700	2,300	2,860	11,100	10,900
CT	2,400	2,400	2,300	9,580	8,540	8,910
GA	1,300	1,200	1,200	9,230	11,700	7,500
ID	5,400	5,400	5,400	13,000	25,900	14,800
IL	5,000	5,000	5,000	11,700	8,400	8,720
IN	4,000	4,000	4,000	15,100	11,300	13,300
IA	1,700	1,650	1,600	6,470	4,550	5,500
KS	550	450	400	13,100	6,670	10,000
KY	1,300	1,100	1,000	6,920	5,910	8,700
ME	4,700	4,000	3,500	15,300	9,750	13,400
MD	2,700	2,400	2,400	14,100	14,000	17,000
MA	5,250	5,000	4,700	12,400	10,000	8,300
MI	52,000	48,500	44,000	23,100	16,500	20,000
MN	2,900	2,900	2,900	7,930	7,590	8,280
MO	3,800	3,800	3,800	12,900	10,000	10,800
NH	2,900	2,800	2,700	15,000	12,100	11,100
NJ	3,300	3,000	2,800	15,200	16,700	19,600
NM	1,800	1,500	1,500	1,110	5,330	4,000
NY	55,000	55,000	55,000	22,900	18,100	18,200
NC	9,000	9,000	8,000	21,100	21,100	15,000
OH	7,700	7,500	7,400	13,000	13,700	11,600
OR	8,700	8,700	8,700	17,200	19,200	16,300
PA	23,000	23,000	23,000	22,000	20,700	20,900
RI	300	300	300	12,000	7,670	6,000
SC	2,400	1,700	1,600	13,300	11,800	3,750
TN	1,100	1,100	1,000	8,640	8,640	9,000
UT	2,800	2,800	2,800	3,210	17,500	10,700
VT	3,700	3,500	3,000	15,400	11,900	13,700
VA	17,000	15,000	15,000	21,200	21,300	20,700
WA	172,000	170,000	168,000	29,100	35,300	30,400
WV	8,000	7,000	6,500	17,500	12,100	17,700
WI	6,500	6,500	6,500	11,900	10,900	9,540
US	460,800	444,700	430,200	23,100	24,000	22,400

¹ Yield is based on total production, which includes unharvested production and fruit harvested but not sold due to market conditions.

**Apples, Commercial: Total and Utilized Production
by State and United States, 1999-2001**

State	Total Production			Utilized Production		
	1999	2000	2001	1999	2000	2001
	<i>Million Pounds</i>	<i>Million Pounds</i>	<i>Million Pounds</i>	<i>Million Pounds</i>	<i>Million Pounds</i>	<i>Million Pounds</i>
AZ	34.3	95.0	5.4	32.0	94.5	5.3
AR	5.4	7.2	5.5	4.2	3.4	4.3
CA	896.0	650.0	700.0	896.0	590.0	670.0
CO	8.0	30.0	25.0	8.0	27.0	25.0
CT	23.0	20.5	20.5	22.0	20.0	20.0
GA	12.0	14.0	9.0	11.0	13.0	8.9
ID	70.0	140.0	80.0	70.0	140.0	79.0
IL	58.5	42.0	43.6	42.5	36.0	40.6
IN	60.3	45.0	53.0	54.8	43.8	46.0
IA	11.0	7.5	8.8	11.0	7.5	7.7
KS	7.2	3.0	4.0	5.2	1.3	3.0
KY	9.0	6.5	8.7	7.0	5.6	7.4
ME	72.0	39.0	47.0	61.0	35.0	40.0
MD	38.0	33.7	40.8	38.0	33.0	40.7
MA	65.0	50.0	39.0	57.0	43.0	34.0
MI	1,200.0	800.0	880.0	1,180.0	795.0	850.0
MN	23.0	22.0	24.0	18.3	17.4	15.5
MO	49.0	38.0	41.0	46.0	34.0	41.0
NH	43.5	34.0	30.0	42.0	32.5	28.5
NJ	50.0	50.0	55.0	50.0	46.0	50.0
NM	2.0	8.0	6.0	2.0	8.0	6.0
NY	1,260.0	995.0	1,000.0	1,230.0	935.0	940.0
NC	190.0	190.0	120.0	170.0	145.0	115.0
OH	100.0	103.0	86.0	91.0	96.0	84.0
OR	150.0	167.0	142.0	145.0	162.0	141.0
PA	505.0	475.0	480.0	505.0	475.0	480.0
RI	3.6	2.3	1.8	2.9	2.2	1.4
SC	32.0	20.0	6.0	30.0	16.0	2.0
TN	9.5	9.5	9.0	8.0	8.5	6.5
UT	9.0	49.0	30.0	9.0	43.0	24.0
VT	57.0	41.5	41.0	52.0	38.5	38.0
VA	360.0	320.0	310.0	350.0	314.0	306.0
WA	5,000.0	6,000.0	5,100.0	5,000.0	6,000.0	5,100.0
WV	140.0	85.0	115.0	135.0	83.0	105.0
WI	77.4	71.0	62.0	60.6	58.0	49.0
US	10,630.7	10,663.7	9,629.1	10,446.5	10,402.2	9,414.8

**Apples, Commercial: Price and Value by State
by State and United States, 1999-2001**

State	Price per Pound			Value of Utilized Production		
	1999	2000	2001	1999	2000	2001
	<i>Dollars</i>	<i>Dollars</i>	<i>Dollars</i>	<i>1,000 Dollars</i>	<i>1,000 Dollars</i>	<i>1,000 Dollars</i>
AZ	0.127	0.074	0.066	4,054	6,971	350
AR	0.238	0.252	0.250	1,001	856	1,076
CA	0.158	0.150	0.145	141,764	88,290	97,380
CO	0.218	0.139	0.213	1,740	3,765	5,336
CT	0.276	0.302	0.322	6,078	6,040	6,445
GA	0.174	0.188	0.230	1,919	2,443	2,051
ID	0.171	0.107	0.141	11,970	15,040	11,115
IL	0.214	0.287	0.237	9,109	10,326	9,613
IN	0.234	0.245	0.185	12,834	10,734	8,522
IA	0.319	0.321	0.333	3,514	2,411	2,562
KS	0.277	0.268	0.283	1,442	349	850
KY	0.293	0.249	0.291	2,051	1,396	2,152
ME	0.202	0.218	0.290	12,335	7,622	11,605
MD	0.094	0.137	0.155	3,566	4,509	6,292
MA	0.268	0.320	0.324	15,300	13,755	11,013
MI	0.088	0.093	0.096	103,465	74,065	81,610
MN	0.414	0.432	0.478	7,578	7,523	7,405
MO	0.175	0.169	0.171	8,033	5,736	7,017
NH	0.215	0.236	0.250	9,023	7,655	7,133
NJ	0.128	0.134	0.162	6,375	6,183	8,117
NM	0.250	0.254	0.318	500	2,032	1,908
NY	0.114	0.117	0.119	140,230	109,075	111,860
NC	0.151	0.126	0.146	25,730	18,225	16,745
OH	0.219	0.227	0.236	19,896	21,746	19,831
OR	0.109	0.119	0.121	15,845	19,346	17,085
PA	0.109	0.114	0.096	55,020	54,337	46,080
RI	0.372	0.359	0.383	1,079	790	536
SC	0.137	0.129	0.187	4,110	2,064	373
TN	0.211	0.244	0.235	1,685	2,076	1,527
UT	0.219	0.118	0.172	1,970	5,060	4,136
VT	0.205	0.225	0.241	10,640	8,665	9,150
VA	0.109	0.103	0.106	38,175	32,228	32,541
WA	0.171	0.125	0.177	856,000	750,200	904,800
WV	0.093	0.095	0.082	12,505	7,883	8,580
WI	0.281	0.280	0.293	17,046	16,245	14,368
US	0.150	0.127	0.157	1,563,582	1,325,641	1,477,164

**Apples, Commercial: Fresh Market Utilization and Price
by State and United States, 1999-2001**

State	Fresh Market					
	Quantity			Price per Pound ¹		
	1999	2000	2001	1999	2000	2001
	<i>Million Pounds</i>	<i>Million Pounds</i>	<i>Million Pounds</i>	<i>Dollars</i>	<i>Dollars</i>	<i>Dollars</i>
AZ	5.4	3.0	0.1	0.406	0.326	0.383
CA	420.0	250.0	290.0	0.248	0.243	0.229
CO	5.0	17.0	17.0	0.300	0.185	0.276
CT	16.5	16.0	16.5	0.355	0.365	0.380
ID	50.0	80.0	49.0	0.216	0.170	0.210
IN	40.8	32.1	23.0	0.295	0.314	0.312
KY	6.6	4.9	6.9	0.305	0.273	0.305
ME	40.0	26.0	33.0	0.290	0.280	0.340
MD	9.2	17.9	19.1	0.170	0.200	0.261
MA	42.0	34.0	26.5	0.350	0.390	0.400
MI	370.0	260.0	270.0	0.145	0.147	0.168
MO	33.5	21.0	28.0	0.220	0.240	0.226
NH	26.5	20.5	18.0	0.320	0.350	0.370
NJ	20.0	20.0	23.0	0.213	0.224	0.276
NM	2.0	8.0	6.0	0.250	0.254	0.318
NY	590.0	460.0	420.0	0.165	0.170	0.184
NC	80.0	61.0	45.0	0.235	0.201	0.250
OH	73.0	79.0	70.0	0.258	0.263	0.271
OR	100.0	122.0	94.0	0.131	0.143	0.154
PA	127.0	127.0	120.0	0.210	0.247	0.201
SC	12.0	5.5	1.1	0.260	0.251	0.264
UT	8.0	28.0	16.0	0.240	0.170	0.250
VT	36.0	28.5	29.0	0.280	0.290	0.300
VA	125.0	99.0	88.0	0.183	0.167	0.210
WA	3,600.0	4,300.0	3,700.0	0.216	0.163	0.233
WV	20.0	15.0	15.0	0.217	0.215	0.200
WI	52.9	49.0	41.0	0.317	0.324	0.340
Oth Sts	83.4	72.4	77.0	0.311	0.352	0.319
US	5,994.8	6,256.8	5,542.2	0.213	0.178	0.229

¹ Equivalent packinghouse door returns for CA, NY, and WA; price at first sale for all other States.

**Apples, Commercial: Value of Fresh Market Production
by State and United States, 1999-2001**

State	Fresh Market		
	Value of Production		
	1999	2000	2001
	<i>1,000 Dollars</i>	<i>1,000 Dollars</i>	<i>1,000 Dollars</i>
AZ	2,192	978	38
CA	104,160	60,750	66,410
CO	1,500	3,145	4,692
CT	5,858	5,840	6,270
ID	10,800	13,600	10,290
IN	12,036	10,079	7,176
KY	2,013	1,338	2,105
ME	11,600	7,280	11,220
MD	1,564	3,580	4,985
MA	14,700	13,260	10,600
MI	53,650	38,220	45,360
MO	7,370	5,040	6,328
NH	8,480	7,175	6,660
NJ	4,260	4,480	6,348
NM	500	2,032	1,908
NY	97,350	78,200	77,280
NC	18,800	12,261	11,250
OH	18,834	20,777	18,970
OR	13,100	17,446	14,476
PA	26,670	31,369	24,120
SC	3,120	1,381	290
UT	1,920	4,760	4,000
VT	10,080	8,265	8,700
VA	22,875	16,533	18,480
WA	777,600	700,900	862,100
WV	4,340	3,225	3,000
WI	16,769	15,876	13,940
Oth Sts	25,907	25,457	24,597
US	1,278,048	1,113,247	1,271,593

**Apples, Commercial: Processed Utilization and Price
by State and United States, 1999-2001**

State	Processed					
	Quantity			Price per Ton		
	1999	2000	2001	1999	2000	2001
	<i>Million Pounds</i>	<i>Million Pounds</i>	<i>Million Pounds</i>	<i>Dollars</i>	<i>Dollars</i>	<i>Dollars</i>
AZ	26.6	91.5	5.2	140.00	131.00	120.00
CA	476.0	340.0	380.0	158.00	162.00	163.00
CO	3.0	10.0	8.0	160.00	124.00	161.00
CT	5.5	4.0	3.5	80.00	100.00	100.00
ID	20.0	60.0	30.0	117.00	48.00	55.00
IN	14.0	11.7	23.0	114.00	112.00	117.00
KY	0.4	0.7	0.5	188.00	166.00	188.00
ME	21.0	9.0	7.0	70.00	76.00	110.00
MD	28.8	15.1	21.6	139.00	123.00	121.00
MA	15.0	9.0	7.5	80.00	110.00	110.00
MI	810.0	535.0	580.0	123.00	134.00	125.00
MO	12.5	13.0	13.0	106.00	107.00	106.00
NH	15.5	12.0	10.5	70.00	80.00	90.00
NJ	30.0	26.0	27.0	141.00	131.00	131.00
NY	640.0	475.0	520.0	134.00	130.00	133.00
NC	90.0	84.0	70.0	154.00	142.00	157.00
OH	18.0	17.0	14.0	118.00	114.00	123.00
OR	45.0	40.0	47.0	122.00	95.00	111.00
PA	378.0	348.0	360.0	150.00	132.00	122.00
SC	18.0	10.5	0.9	110.00	130.00	184.00
UT	1.0	15.0	8.0	100.00	40.00	34.00
VT	16.0	10.0	9.0	70.00	80.00	100.00
VA	225.0	215.0	218.0	136.00	146.00	129.00
WA	1,400.0	1,700.0	1,400.0	112.00	58.00	61.00
WV	115.0	68.0	90.0	142.00	137.00	124.00
WI	7.7	9.0	8.0	72.00	82.00	107.00
Oth Sts	19.7	16.9	10.9	144.00	156.00	188.00
US	4,451.7	4,145.4	3,872.6	128.00	102.00	106.00

**Apples, Commercial: Value of Processed Production
by State and United States, 1999-2001**

State	Processed		
	Value of Production		
	1999	2000	2001
	<i>1,000 Dollars</i>	<i>1,000 Dollars</i>	<i>1,000 Dollars</i>
AZ	1,862	5,993	312
CA	37,604	27,540	30,970
CO	240	620	644
CT	220	200	175
ID	1,170	1,440	825
IN	798	655	1,346
KY	38	58	47
ME	735	342	385
MD	2,002	929	1,307
MA	600	495	413
MI	49,815	35,845	36,250
MO	663	696	689
NH	543	480	473
NJ	2,115	1,703	1,769
NY	42,880	30,875	34,580
NC	6,930	5,964	5,495
OH	1,062	969	861
OR	2,745	1,900	2,609
PA	28,350	22,968	21,960
SC	990	683	83
UT	50	300	136
VT	560	400	450
VA	15,300	15,695	14,061
WA	78,400	49,300	42,700
WV	8,165	4,658	5,580
WI	277	369	428
Oth Sts	1,420	1,317	1,023
US	285,534	212,394	205,571

**Apples, Commercial: Processed Utilization, Use, and Price
by State and United States, 1999-2001 ¹**

Use and State	Processed Utilization					
	Quantity			Price per Ton		
	1999	2000	2001	1999	2000	2001
	<i>Million Pounds</i>	<i>Million Pounds</i>	<i>Million Pounds</i>	<i>Dollars</i>	<i>Dollars</i>	<i>Dollars</i>
Canned						
CA	40.0	9.0	24.0	148.00	152.00	146.00
MI	255.0	190.0	225.0	145.00	155.00	140.00
NY	310.0	246.0	320.0	164.00	158.00	152.00
NC	50.0	53.0	48.0	173.00	168.00	179.00
PA	248.0	221.0	226.0	176.00	158.00	142.00
VA	141.0	165.0	168.0	166.00	164.00	139.00
WA	150.0	200.0	180.0	98.00	87.00	83.00
Oth Sts	124.6	102.7	117.6	165.00	155.00	140.00
US	1,318.6	1,186.7	1,308.6	155.00	147.00	137.00
Juice & Cider						
CA	400.0	308.0	308.0	154.00	156.00	164.00
MI	380.0	215.0	220.0	90.00	95.00	85.00
NY	266.0	189.0	155.0	90.00	88.00	86.00
NC	30.0	19.0	21.0	94.00	83.00	107.00
OR		24.0	24.0		73.00	52.00
PA	120.0	118.0	125.0	100.00	86.00	87.00
VA	83.0	46.0	48.0	85.00	86.00	94.00
WA	940.0	1,220.0	910.0	110.00	49.00	51.00
WV	40.0	21.0	28.0	92.00	85.00	94.00
Oth Sts	213.8	257.8	140.5	98.00	93.90	93.50
US	2,472.8	2,417.8	1,979.5	109.00	77.90	82.60

See footnote(s) at end of table.

--continued

**Apples, Commercial: Processed Utilization, Use, and Price
by State and United States, 1999-2001 ¹ (continued)**

Use and State	Processed Utilization					
	Quantity			Price per Ton		
	1999	2000	2001	1999	2000	2001
	<i>Million Pounds</i>	<i>Million Pounds</i>	<i>Million Pounds</i>	<i>Dollars</i>	<i>Dollars</i>	<i>Dollars</i>
Frozen						
MI	160.0	120.0	120.0	165.00	170.00	170.00
NY	45.0	26.0	30.0	168.00	168.00	150.00
Oth Sts	66.3	47.9	111.5	134.00	90.90	110.00
US	271.3	193.9	261.5	158.00	150.00	142.00
Dried						
US	263.2	248.2	242.0	124.00	71.20	76.70
Other ²						
MI	15.0	10.0	15.0	120.00	165.00	130.00
NY	19.0	14.0	15.0	164.00	128.00	164.00
Oth Sts	91.8	74.8	51.0	170.00	172.00	158.00
US	125.8	98.8	81.0	163.00	165.00	154.00

¹ Missing data included in Other States to avoid disclosure of individual operations.

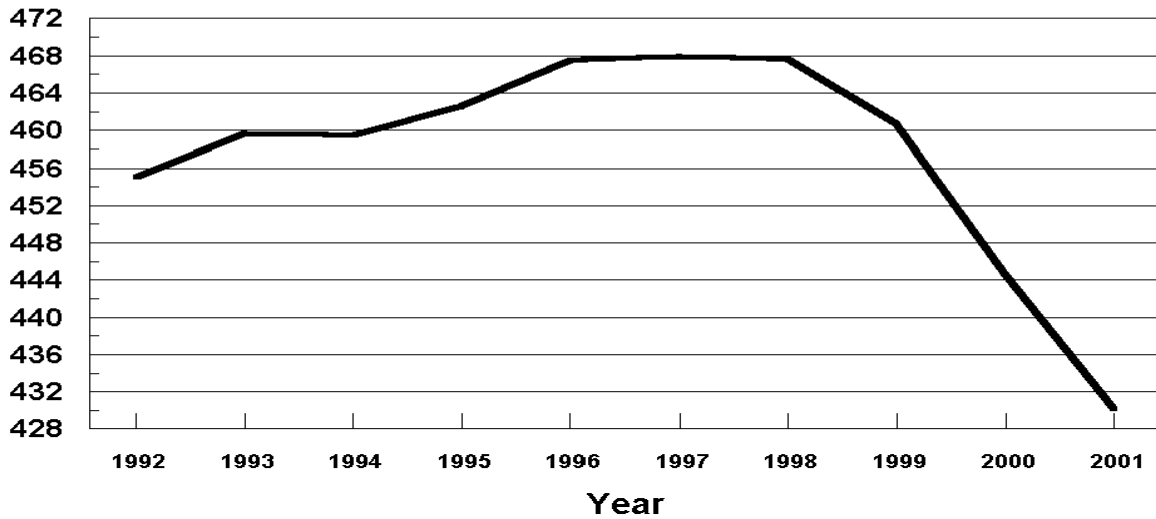
² Includes vinegar, wine, and fresh slices for pie making.

U. S. Apples

Bearing Acres

1992 - 2001

(000) Acres

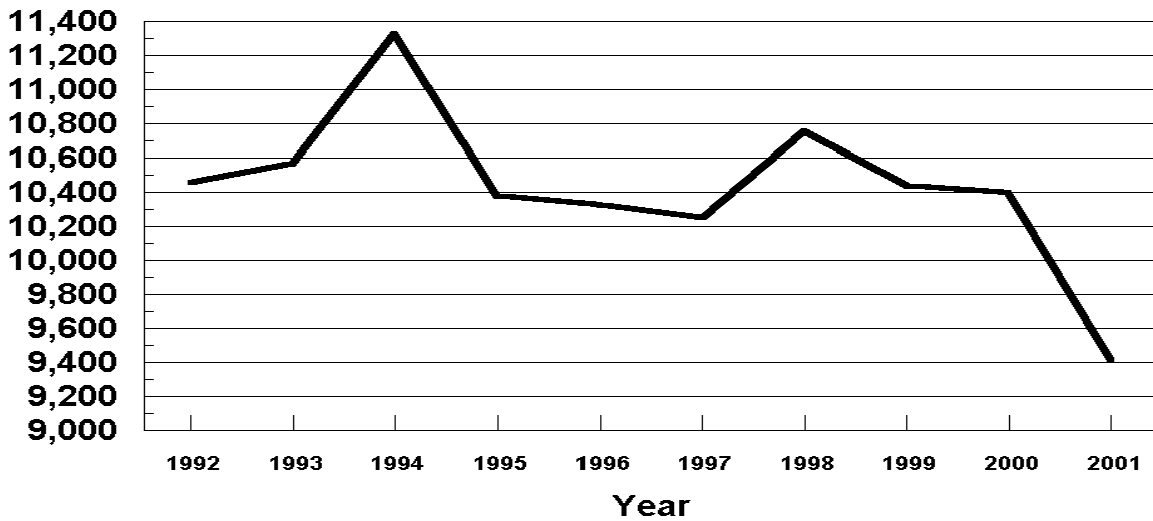


U. S. Apples

Utilized Production

1992 - 2001

Million Pounds



**Miscellaneous Fruits: Bearing Acreage, Yield, Production, and Utilization
by State and United States, 1999-2001**

Crop, State, and Season	Bearing Acreage	Yield Per Acre ¹	Production		Utilization	
			Total	Utilized	Fresh	Processed
	<i>Acres</i>	<i>Tons</i>	<i>Tons</i>	<i>Tons</i>	<i>Tons</i>	<i>Tons</i>
Apricots ²						
CA						
1999	19,000	4.47	85,000	85,000		
2000	19,000	4.74	90,000	81,000	21,000	60,000
2001	18,000	4.28	77,000	70,000	14,000	56,000
UT						
1999 ³						
2000			400	260		
2001			260	230		
WA						
1999			5,500	5,500		
2000			6,500	6,500		
2001			5,200	5,200		
US						
1999	20,380	4.44	90,500	90,500	25,800	64,700
2000	20,380	4.75	96,900	87,760	26,580	61,180
2001	19,430	4.24	82,460	75,430	18,160	57,270
Avocados						
CA						
1999-00 ⁴	59,000	2.73	161,000	161,000	161,000	
2000-01 ⁴	59,000	3.61	213,000	213,000	213,000	
2001-02	58,000	3.24	188,000	188,000	188,000	
FL						
1999-00	5,900	3.73	22,000	22,000	22,000	
2000-01	6,000	4.33	26,000	26,000	26,000	
2001-02	5,900	3.90	23,000	23,000	23,000	
HI						
1999-00	230	1.30	300	300	300	
2000-01	220	1.45	320	320	320	
2001-02	230	1.30	300	300	300	
US						
1999-00 ⁴	65,130	2.81	183,300	183,300	183,300	
2000-01 ⁴	65,220	3.67	239,320	239,320	239,320	
2001-02	64,130	3.29	211,300	211,300	211,300	
Dates						
CA						
1999	4,900	4.53	22,200	22,200	22,200	
2000	4,800	3.63	17,400	17,400	17,400	
2001	4,500	4.38	19,700	19,700	19,700	

¹ Yield is based on total production.

² Missing data not published to avoid disclosure of individual operations.

³ No significant commercial production in 1999 due to freeze damage.

⁴ Small quantities of processed avocados are included in fresh to avoid disclosure of individual operations.

**Miscellaneous Fruits: Price and Value by State
and United States, 1999-2001¹**

Crop, State, and Season	Price per Ton			Value of Production		
	Fresh	Processed	All	Fresh	Processed	Total
	<i>Dollars</i>	<i>Dollars</i>	<i>Dollars</i>	<i>1,000 Dollars</i>	<i>1,000 Dollars</i>	<i>1,000 Dollars</i>
Apricots ²						
CA						
1999			361.00			30,703
2000	459.00	288.00	329.00	9,639	17,040	26,679
2001	551.00	260.00	319.00	7,714	14,616	22,330
UT						
1999 ³						
2000			612.00			159
2001			639.00			147
WA						
1999			850.00			4,674
2000			847.00			5,508
2001			783.00			4,072
US						
1999	638.00	295.00	391.00	16,455	18,922	35,377
2000	573.00	283.00	369.00	15,226	17,120	32,346
2001	648.00	257.00	352.00	11,768	14,781	26,549
Avocados						
CA						
1999-00 ⁴	2,110.00		2,110.00	339,594		339,594
2000-01 ⁴	1,480.00		1,480.00	315,842		315,842
2001-02	1,490.00		1,490.00	280,120		280,120
FL						
1999-00	748.00		748.00	16,456		16,456
2000-01	584.00		584.00	15,184		15,184
2001-02	676.00		676.00	15,548		15,548
HI						
1999-00	1,200.00		1,200.00	360		360
2000-01	1,160.00		1,160.00	371		371
2001-02	1,140.00		1,140.00	342		342
US						
1999-00 ⁴	1,940.00		1,940.00	356,410		356,410
2000-01 ⁴	1,380.00		1,380.00	331,397		331,397
2001-02	1,400.00		1,400.00	296,010		296,010
Dates						
CA						
1999	1,240.00		1,240.00	27,528		27,528
2000	1,230.00		1,230.00	21,402		21,402
2001	1,410.00		1,410.00	27,777		27,777

¹ Missing data not published to avoid disclosure of individual operations.

² Apricot processed price excludes dried. Processing value includes dried.

³ No significant commercial production in 1999 due to freeze damage.

⁴ Small quantities of processed avocados are included in fresh to avoid disclosure of individual operations.

**Miscellaneous Fruits: Bearing Acreage, Yield, Production, and Utilization
by State and United States, 1999-2001 ¹**

Crop, State, and Season	Bearing Acreage	Yield Per Acre ²	Production		Utilization	
			Total	Utilized	Fresh	Processed
	<i>Acres</i>	<i>Tons</i>	<i>Tons</i>	<i>Tons</i>	<i>Tons</i>	<i>Tons</i>
Figs ³						
CA						
1999	14,700	3.22	47,300	47,300	2,000	45,300
2000	15,400	3.63	55,900	55,900	4,000	51,900
2001	14,000	2.84	39,800	39,800	2,000	37,800
Kiwifruit						
CA						
1999	5,300	5.09	27,000	24,000	23,100	900
2000	5,300	6.42	34,000	30,500	28,500	2,000
2001	5,300	4.87	25,800	23,000	22,200	800
Nectarines						
CA						
1999	35,500	7.72	274,000	274,000	256,300	17,700
2000	35,500	7.52	267,000	267,000	260,700	6,300
2001	36,500	7.53	275,000	275,000	265,400	9,600
Olives						
CA						
1999	35,300	4.02	142,000	142,000	500	141,500
2000	36,000	1.47	53,000	53,000	500	52,500
2001	36,000	3.72	134,000	134,000	500	133,500
Plums						
CA						
1999	40,000	4.90	196,000	196,000		
2000	38,000	5.18	197,000	197,000		
2001	37,000	5.68	210,000	210,000		

¹ Missing data not published to avoid disclosure of individual operations.

² Yield is based on total production.

³ Small quantities of canned figs are included in fresh to avoid disclosure of individual operations.

**Miscellaneous Fruits: Price and Value by State
and United States, 1999-2001 ¹**

Crop, State, and Season	Price per Ton			Value of Production		
	Fresh	Processed	All	Fresh	Processed	Total
	<i>Dollars</i>	<i>Dollars</i>	<i>Dollars</i>	<i>1,000 Dollars</i>	<i>1,000 Dollars</i>	<i>1,000 Dollars</i>
Figs						
CA						
1999			268.00			12,685
2000			272.00			15,226
2001			365.00			14,529
Kiwifruit						
CA						
1999			634.00			15,215
2000			455.00			13,888
2001			667.00			15,340
Nectarines						
CA						
1999	437.00	27.90	411.00	112,003	494	112,497
2000	407.00	24.00	398.00	106,105	151	106,256
2001	480.00	26.00	464.00	127,392	250	127,642
Olives						
CA						
1999	500.00	387.00	387.00	250	54,761	55,011
2000	500.00	657.00	656.00	250	34,493	34,743
2001	500.00	673.00	672.00	250	89,846	90,096
Plums						
CA						
1999			419.00			82,041
2000			442.00			87,115
2001			316.00			66,443

¹ Missing data not published to avoid disclosure of individual operations.

**Miscellaneous Fruits: Bearing Acreage, Yield, Production, and Utilization
by State and United States, 1999-2001 ¹**

Crop, State, and Season	Bearing Acreage	Yield Per Acre ²	Production		Utilization	
			Total	Utilized	Fresh	Processed
	<i>Acres</i>	<i>Tons</i>	<i>Tons</i>	<i>Tons</i>	<i>Tons</i>	<i>Tons</i>
Prunes & Plums						
ID						
1999			1,800	1,770		
2000			3,500	3,350		
2001			3,000	3,000		
MI						
1999	900	4.44	4,000	3,750	1,100	2,650
2000	800	4.50	3,600	3,300	1,250	2,050
2001	900	4.00	3,600	3,600	1,800	1,800
OR						
1999	2,000	6.50	13,000	12,000		
2000	2,000	5.00	10,000	8,500		
2001	2,000	4.50	9,000	7,800		
WA						
1999			4,100	4,100		
2000			6,800	6,800		
2001			5,600	5,600		
4-State Total						
1999	4,210	5.44	22,900	21,620	11,150	10,470
2000	4,110	5.82	23,900	21,950	9,400	12,550
2001	4,410	4.81	21,200	20,000	11,000	9,000
Prunes (Dried Basis)						
CA						
1999	83,000	2.14	178,000	165,000		165,000
2000	86,000	2.55	219,000	201,000		201,000
2001	86,000	1.74	150,000	135,000		135,000

¹ Missing data not published to avoid disclosure of individual operations.

² Yield is based on total production.

**Miscellaneous Fruits: Price and Value by State
and United States, 1999-2001 ¹**

Crop, State, and Season	Price per Ton			Value of Production		
	Fresh	Processed	All	Fresh	Processed	Total
	<i>Dollars</i>	<i>Dollars</i>	<i>Dollars</i>	<i>1,000 Dollars</i>	<i>1,000 Dollars</i>	<i>1,000 Dollars</i>
Prunes & Plums						
ID						
1999			287.00			508
2000			397.00			1,330
2001			582.00			1,745
MI						
1999	440.00	240.00	299.00	484	636	1,120
2000	270.00	255.00	261.00	338	523	861
2001	442.00	274.00	358.00	796	493	1,289
OR						
1999			157.00			1,882
2000			192.00			1,633
2001			166.00			1,298
WA						
1999			241.00			990
2000			209.00			1,423
2001			201.00			1,127
4-State Total						
1999	232.00	182.00	208.00	2,592	1,908	4,500
2000	321.00	178.00	239.00	3,014	2,233	5,247
2001	345.00	185.00	273.00	3,790	1,669	5,459
Prunes (Dried Basis)						
CA						
1999		861.00	861.00		142,065	142,065
2000		770.00	770.00		154,770	154,770
2001		750.00	750.00		101,250	101,250

¹ Missing data not published to avoid disclosure of individual operations.

**Miscellaneous Fruits: Processed Utilization, Use, and Price
by State and United States, 1999-2001 ¹**

Crop, Use, and State	Processed Utilization					
	Quantity			Price per Ton		
	1999	2000	2001	1999	2000	2001
	<i>Tons</i>	<i>Tons</i>	<i>Tons</i>	<i>Dollars</i>	<i>Dollars</i>	<i>Dollars</i>
Apricots						
Canned						
CA		32,000	31,000		322.00	292.00
Juice						
CA		10,000	9,000		169.00	102.00
Frozen						
CA		10,000	9,000		298.00	308.00
Dried (Fresh Basis)						
CA		8,000	6,000		260.00	268.00
Figs						
Dried (Fresh Basis)						
CA	45,300	51,900	37,800	227.00	224.00	305.00
Olives						
Canned						
CA	86,000	41,400	109,700	513.00	769.00	770.00
Crushed for Oil						
CA	5,000	3,000	3,000	200.00	300.00	300.00
Limited						
CA	36,500	5,100	15,300	259.00	333.00	287.00
Undersized						
CA	14,000	3,000	5,500	11.00	11.00	6.00
Prunes & Plums						
Canned						
4-State Total	5,400	5,400	4,470	135.00	182.00	190.00
Frozen						
4-State Total	950	1,500	1,280	297.00	287.00	241.00
Dried & Other						
4-State Total	4,120	5,650	3,250	218.00	145.00	157.00

¹ Missing data not published to avoid disclosure of individual operations.

California Dry Fruits: Production, Use, and Price, 1999-2001

Crop	Quantity			Price per Ton		
	1999	2000	2001	1999	2000	2001
	<i>Tons</i>	<i>Tons</i>	<i>Tons</i>	<i>Dollars</i>	<i>Dollars</i>	<i>Dollars</i>
Fresh Basis						
Apricots		8,000	6,000		260.00	268.00
Figs	45,300	51,900	37,800	227.00	224.00	305.00
Grapes						
Raisin	1,427,000	2,146,000	1,692,000	293.00	127.00	133.00
Table	25,000	41,000	23,000	247.00	157.00	129.00
Peaches						
Freestone	15,700	12,600	14,590	73.00	78.00	51.00
Pears						
Bartlett	7,000	4,000	3,000	150.00	136.00	202.00
Prunes	478,500	625,100	378,000	297.00	248.00	268.00
Dried Basis						
Apricots ¹		1,120	820		1,860.00	1,960.00
Figs ²						
Standard	13,800	15,400	11,300	739.00	747.00	1,010.00
Sub-Std.	1,300	1,900	1,300	60.00	60.00	60.00
Grapes						
Raisin ^{3 4}	342,300	484,500	407,700	1,220.00	563.00	550.00
Table ⁵	6,000	9,200	5,400	1,030.00	700.00	550.00
Peaches ⁶						
Freestone	1,849	1,350	1,450	619.50	728.00	514.00
Pears ⁷						
Bartlett	1,010	600	500	1,040.00	909.00	1,210.00
Prunes ⁸	165,000	201,000	135,000	861.00	770.00	750.00

¹ Dried basis 1 ton of dried apricots equivalent to NA for 1999, 7.14 tons for 2000, and 7.32 tons for 2001.

² Dried basis 1 ton of all figs equivalent to 3.00 tons for 1999, 2000, and 2001.

³ Includes substandard raisins diverted to other uses.

⁴ Dried basis 1 ton of raisins equivalent to 4.17 tons for 1999, 4.43 tons for 2000, and 4.15 tons for 2001.

⁵ Dried basis 1 ton of table type raisins equivalent to 4.17 tons for 1999, 4.46 tons for 2000, and 4.26 tons for 2001.

⁶ Dried basis 1 ton of Freestone peaches equivalent to 8.49 tons for 1999, 9.33 tons for 2000, and 10.06 tons for 2001.

⁷ Dried basis 1 ton of Bartlett pears equivalent to 6.93 tons for 1999, 6.67 tons for 2000, and 7.00 tons for 2001.

⁸ Dried basis 1 ton of dried prunes equivalent to 2.90 tons for 1999, 3.11 tons for 2000, and 2.80 tons for 2001.

**Strawberries: Area Planted and Harvested, Yield, and Production
by Season, State, and United States, 1999-2001**

Season and State	Area Planted			Area Harvested		
	1999	2000	2001	1999	2000	2001
	<i>Acres</i>	<i>Acres</i>	<i>Acres</i>	<i>Acres</i>	<i>Acres</i>	<i>Acres</i>
Winter FL	6,200	6,300	6,500	6,200	6,300	6,500
Spring AR ¹	230			210		
CA	25,800	27,600	26,400	25,800	27,600	26,400
LA ¹	400			400		
MI	1,400	1,200	1,000	1,400	1,200	1,000
NJ	500	500	500	450	450	400
NY	1,700	1,700	1,700	1,600	1,600	1,600
NC	1,700	1,800	1,800	1,600	1,700	1,700
OH	1,200	1,200	1,200	1,000	1,000	1,000
OR	4,300	4,100	3,800	4,200	3,500	3,100
PA	1,300	1,300	1,300	1,300	1,300	1,300
VA ²		500	500		500	500
WA	1,500	1,500	1,600	1,500	1,500	1,600
WI	1,200	1,200	1,100	1,100	1,000	1,000
Total	41,230	42,600	40,900	40,560	41,350	39,600
US	47,430	48,900	47,400	46,760	47,650	46,100
	Yield per Acre			Production		
	1999	2000	2001	1999	2000	2001
	<i>Cwt</i>	<i>Cwt</i>	<i>Cwt</i>	<i>1,000 Cwt</i>	<i>1,000 Cwt</i>	<i>1,000 Cwt</i>
Winter FL	300	350	260	1,860	2,205	1,690
Spring AR ¹	52			11		
CA	595	590	525	15,351	16,284	13,860
LA ¹	150			60		
MI	64	69	58	90	83	58
NJ	44	36	45	20	16	18
NY	49	41	38	78	65	60
NC	110	135	115	176	231	196
OH	40	44	46	40	44	46
OR	99	100	130	416	353	402
PA	40	50	66	52	65	86
VA ²		110	82		54	41
WA	80	86	100	120	129	160
WI	47	44	46	52	44	46
Total	406	420	378	16,466	17,368	14,973
US	392	411	361	18,326	19,573	16,663

¹ Estimates discontinued in 2000.

² Added to estimating program in 2000.

**Strawberries: Price and Value by Season,
State, and United States, 1999-2001**

Season and State	Price per Cwt			Value of Production		
	1999	2000	2001	1999	2000	2001
	<i>Dollars</i>	<i>Dollars</i>	<i>Dollars</i>	<i>1,000 Dollars</i>	<i>1,000 Dollars</i>	<i>1,000 Dollars</i>
Winter FL	81.00	76.00	99.00	150,660	167,580	167,310
Spring AR ¹	62.00			682		
CA	58.90	51.60	60.70	904,132	839,926	841,031
LA ¹	72.00			4,320		
MI	71.20	74.00	94.50	6,412	6,145	5,482
NJ	63.50	94.00	72.20	1,270	1,504	1,300
NY	106.00	105.00	118.00	8,268	6,825	7,080
NC	80.00	75.00	85.00	14,080	17,325	16,660
OH	105.00	108.00	105.00	4,200	4,752	4,830
OR	51.50	49.50	37.70	21,412	17,491	15,164
PA	105.00	108.00	110.00	5,460	7,020	9,460
VA ²		105.00	124.00		5,670	5,084
WA	61.40	52.50	43.40	7,368	6,776	6,944
WI	99.00	104.00	110.00	5,148	4,576	5,060
Total	59.70	52.90	61.30	982,752	918,010	918,095
US	61.80	55.50	65.10	1,133,412	1,085,590	1,085,405

¹ Estimates discontinued in 2000.

² Added to estimating program in 2000.

**Strawberries: Fresh Market and Processed Production
by Season, State, and United States, 1999-2001**

Utilization, Season, and State	Production		
	1999	2000	2001
	<i>1,000 Cwt</i>	<i>1,000 Cwt</i>	<i>1,000 Cwt</i>
Fresh			
Winter			
FL	1,860	2,205	1,690
Spring			
AR ¹	11		
CA	10,603	12,215	10,563
LA ¹	60		
MI	71	66	52
NJ	20	16	18
NY	78	65	60
NC	176	231	196
OH	40	44	46
OR	17	18	22
PA	52	65	86
VA ²		54	41
WA	24	20	24
WI	52	44	46
Total	11,204	12,838	11,154
US	13,064	15,043	12,844
Processed			
Spring			
CA	4,748	4,069	3,297
MI	19	17	6
OR	399	335	380
WA	96	109	136
US	5,262	4,530	3,819

¹ Estimates discontinued in 2000.

² Added to estimating program in 2000.

**Strawberries: Fresh Market and Processed Price and Value
by Season, State, and United States, 1999-2001**

Utilization, Season and State	Price per Cwt			Value of Production		
	1999	2000	2001	1999	2000	2001
	<i>Dollars</i>	<i>Dollars</i>	<i>Dollars</i>	<i>1,000 Dollars</i>	<i>1,000 Dollars</i>	<i>1,000 Dollars</i>
Fresh						
Winter						
FL	81.00	76.00	99.00	150,660	167,580	167,310
Spring						
AR ¹	62.00			682		
CA	71.30	61.40	70.60	755,994	750,001	745,748
LA ¹	72.00			4,320		
MI	78.00	81.00	100.00	5,538	5,346	5,200
NJ	63.50	94.00	72.20	1,270	1,504	1,300
NY	106.00	105.00	118.00	8,268	6,825	7,080
NC	80.00	75.00	85.00	14,080	17,325	16,660
OH	105.00	108.00	105.00	4,200	4,752	4,830
OR	86.00	97.00	102.00	1,462	1,746	2,244
PA	105.00	108.00	110.00	5,460	7,020	9,460
VA ²		105.00	124.00		5,670	5,084
WA	107.00	99.00	108.00	2,568	1,980	2,592
WI	99.00	104.00	110.00	5,148	4,576	5,060
Total	72.20	62.80	72.20	808,990	806,745	805,258
US	73.50	64.80	75.70	959,650	974,325	972,568
Processed						
Spring						
CA	31.20	22.10	28.90	148,138	89,925	95,283
MI	46.00	47.00	47.00	874	799	282
OR	50.00	47.00	34.00	19,950	15,745	12,920
WA	50.00	44.00	32.00	4,800	4,796	4,352
US	33.00	24.60	29.50	173,762	111,265	112,837

¹ Estimates discontinued in 2000.

² Added to estimating program in 2000.

**Berries: Harvested Acreage, Yield, Production, and Utilization
by Crop, State, and United States, 1999-2001**

Crop, State, and Year	Area Harvested	Yield Per Acre ¹	Production		Utilization	
			Total	Utilized	Fresh	Processed
	<i>Acres</i>	<i>Pounds</i>	<i>1,000 Pounds</i>	<i>1,000 Pounds</i>	<i>1,000 Pounds</i>	<i>1,000 Pounds</i>
Cultivated						
Blueberries						
AL						
1999	310	2,100	890	650	560	90
2000 ²	300	1,500	710	450	450	
2001 ²	310	1,710	800	530	530	
AR						
1999	450	2,510	1,210	1,130	1,030	100
2000 ²	400	2,650	1,320	1,060	1,060	
2001 ²	400	2,030	1,060	810	810	
FL						
1999	1,200	1,210	1,750	1,450	1,200	250
2000	1,400	2,000	3,300	2,800	2,300	500
2001	1,400	2,210	3,400	3,100	2,800	300
GA						
1999	4,400	2,500	12,000	11,000	6,000	5,000
2000	4,600	4,130	20,000	19,000	6,000	13,000
2001	4,600	3,700	18,000	17,000	6,000	11,000
IN						
1999	770	3,640	2,900	2,800	2,000	800
2000	720	3,470	2,600	2,500	1,500	1,000
2001	670	2,240	1,600	1,500	900	600
MI						
1999	16,600	4,220	70,000	70,000	18,000	52,000
2000	16,700	3,710	62,000	62,000	19,000	43,000
2001	17,400	4,430	77,000	77,000	22,000	55,000
NJ						
1999	7,500	5,200	41,000	39,000	28,000	11,000
2000	7,500	4,530	35,000	34,000	24,000	10,000
2001	7,400	5,000	38,000	37,000	29,000	8,000
NY						
1999	700	2,290	1,900	1,600	1,500	100
2000	700	2,710	2,000	1,900	1,800	100
2001	700	2,140	1,700	1,500	1,450	50
NC						
1999	3,200	4,060	13,000	13,000	10,000	3,000
2000	3,600	4,860	18,000	17,500	10,500	7,000
2001	2,700	5,000	13,800	13,500	10,500	3,000
OR						
1999	2,600	8,650	22,500	22,500	7,500	15,000
2000	2,700	10,400	28,000	28,000	9,000	19,000
2001	2,800	10,300	29,300	28,900	10,900	18,000
WA						
1999	1,600	6,800	11,080	10,880	1,500	9,380
2000	1,700	7,300	12,410	12,410	2,300	10,110
2001	2,000	7,500	15,550	15,000	4,200	10,800
US						
1999	39,330	4,420	178,230	174,010	77,290	96,720
2000	40,320	4,500	185,340	181,620	77,820	103,800
2001	40,380	4,850	200,210	195,840	88,990	106,850
Wild						
Blueberries						
ME						
1999			66,102	66,102	300	65,802
2000			110,990	110,990	420	110,570
2001			75,200	75,200	350	74,850

¹ Yield is based on utilized production.

² Small quantities of processed blueberries are included in fresh to avoid disclosure of individual operations.

**Berries: Price and Value by Crop, State,
and United States, 1999-2001**

Crop, State and Year	Price per Pound			Value of Production		
	Fresh	Processed	All	Fresh	Processed	Total
	<i>Dollars</i>	<i>Dollars</i>	<i>Dollars</i>	<i>1,000 Dollars</i>	<i>1,000 Dollars</i>	<i>1,000 Dollars</i>
Cultivated						
Blueberries						
AL						
1999	1.060	0.870	1.030	594	78	672
2000 ¹	0.953		0.953	429		429
2001 ¹	0.917		0.917	486		486
AR						
1999	1.080	0.700	1.050	1,112	70	1,182
2000 ¹	1.190		1.190	1,262		1,262
2001 ¹	1.450		1.450	1,171		1,171
FL						
1999	5.700	0.700	4.840	6,840	175	7,015
2000	5.000	0.850	4.260	11,500	425	11,925
2001	4.300	0.650	3.950	12,040	195	12,235
GA						
1999	1.180	0.600	0.916	7,080	3,000	10,080
2000	1.450	0.750	0.971	8,700	9,750	18,450
2001	1.250	0.550	0.797	7,500	6,050	13,550
IN						
1999	1.060	0.594	0.927	2,120	475	2,595
2000	1.110	0.800	0.986	1,665	800	2,465
2001	1.300	0.750	1.080	1,170	450	1,620
MI						
1999	1.130	0.660	0.781	20,340	34,320	54,660
2000	1.250	0.730	0.889	23,750	31,390	55,140
2001	0.970	0.545	0.666	21,340	29,975	51,315
NJ						
1999	1.020	0.730	0.938	28,560	8,030	36,590
2000	1.150	0.850	1.060	27,600	8,500	36,100
2001	1.090	0.640	0.990	31,610	5,120	36,730
NY						
1999	1.110	0.680	1.080	1,665	68	1,733
2000	0.970	0.700	0.956	1,746	70	1,816
2001	1.200	0.500	1.180	1,740	25	1,765
NC						
1999	1.190	0.510	1.030	11,900	1,530	13,430
2000	1.300	0.640	1.040	13,650	4,480	18,130
2001	1.640	0.560	1.400	17,220	1,680	18,900
OR						
1999	1.050	0.670	0.797	7,875	10,050	17,925
2000	0.910	0.700	0.768	8,190	13,300	21,490
2001	0.820	0.380	0.546	8,938	6,840	15,778
WA						
1999	1.220	0.640	0.720	1,830	6,003	7,833
2000	1.170	0.660	0.755	2,691	6,673	9,364
2001	1.420	0.530	0.779	5,964	5,724	11,688
US						
1999	1.160	0.660	0.883	89,916	63,799	153,715
2000	1.300	0.727	0.972	101,101	75,470	176,571
2001	1.230	0.526	0.844	109,088	56,150	165,238
Wild						
Blueberries						
ME						
1999	1.100	0.510	0.513	330	33,559	33,889
2000	1.200	0.400	0.403	504	44,228	44,732
2001	1.400	0.300	0.305	490	22,455	22,945

¹ Small quantities of processed blueberries are included in fresh to avoid disclosure of individual operations.

**Berries: Harvested Acreage, Yield, Production, and Utilization
by Crop, State, and United States, 1999-2001**

Crop, State, and Year	Area Harvested	Yield Per Acre ¹	Production		Utilization	
			Total	Utilized	Fresh	Processed
	<i>Acres</i>	<i>Pounds</i>	<i>1,000 Pounds</i>	<i>1,000 Pounds</i>	<i>1,000 Pounds</i>	<i>1,000 Pounds</i>
Boysenberries						
CA ²						
1999	300	9,330	2,800	2,800		
2000	260	9,620	2,500	2,500		
2001	230	8,260	1,900	1,900		
OR						
1999	1,400	5,000	7,000	7,000	300	6,700
2000	1,450	4,480	6,500	6,500	300	6,200
2001	1,380	2,970	4,170	4,100	300	3,800
US ²						
1999	1,700	5,760	9,800	9,800		
2000	1,710	5,260	9,000	9,000		
2001	1,610	3,730	6,070	6,000		
Loganberries						
OR						
1999	80	4,750	380	380	90	290
2000	80	5,750	460	460	80	380
2001	70	1,570	120	110	10	100
Black Raspberries						
OR						
1999	1,100	2,640	2,900	2,900	10	2,890
2000	1,150	3,330	3,830	3,830	30	3,800
2001	1,200	3,180	3,950	3,810	10	3,800
Red Raspberries						
OR						
1999	3,000	4,550	13,650	13,650	700	12,950
2000	2,900	5,000	14,500	14,500	1,300	13,200
2001	2,700	5,890	15,900	15,900	1,300	14,600
WA						
1999	9,500	7,300	71,350	69,350	4,000	65,350
2000	9,500	7,500	72,150	71,250	4,000	67,250
2001	9,500	7,900	76,050	75,050	3,550	71,500
US						
1999	12,500	6,640	85,000	83,000	4,700	78,300
2000	12,400	6,920	86,650	85,750	5,300	80,450
2001	12,200	7,450	91,950	90,950	4,850	86,100
All Raspberries						
CA ²						
1999	1,800	11,600	20,800	20,800		
2000	2,000	11,300	22,600	22,600		
2001	2,300	10,800	24,800	24,800		

¹ Yield is based on utilized production.

² No breakdown of utilization available.

**Berries: Price and Value by Crop, State,
and United States, 1999-2001**

Crop, State, and Year	Price per Pound			Value of Production		
	Fresh	Processed	All	Fresh	Processed	Total
	<i>Dollars</i>	<i>Dollars</i>	<i>Dollars</i>	<i>1,000 Dollars</i>	<i>1,000 Dollars</i>	<i>1,000 Dollars</i>
Boysenberries						
CA ¹						
1999			0.824			2,308
2000			0.824			2,061
2001			0.816			1,550
OR						
1999	1.070	0.640	0.658	321	4,288	4,609
2000	1.350	0.445	0.487	405	2,759	3,164
2001	1.390	0.570	0.630	417	2,166	2,583
US ¹						
1999			0.706			6,917
2000			0.581			5,225
2001			0.689			4,133
Loganberries						
OR						
1999	1.520	0.880	1.030	137	255	392
2000	1.560	0.450	0.643	125	171	296
2001	1.540	0.350	0.455	15	35	50
Black Raspberries						
OR						
1999	2.420	1.890	1.890	24	5,462	5,486
2000	2.100	1.480	1.480	63	5,624	5,687
2001	1.380	0.450	0.452	14	1,710	1,724
Red Raspberries						
OR						
1999	1.000	0.690	0.706	700	8,936	9,636
2000	1.160	0.470	0.532	1,508	6,204	7,712
2001	1.220	0.450	0.513	1,586	6,570	8,156
WA						
1999	1.290	0.660	0.696	5,160	43,131	48,291
2000	1.260	0.310	0.363	5,040	20,848	25,888
2001	1.580	0.450	0.503	5,609	32,175	37,784
US						
1999	1.250	0.665	0.698	5,860	52,067	57,927
2000	1.240	0.336	0.392	6,548	27,052	33,600
2001	1.480	0.450	0.505	7,195	38,745	45,940
All Raspberries						
CA ¹						
1999			1.470			30,604
2000			1.900			42,940
2001			1.660			41,168

¹ No breakdown of utilization available.

Oregon Blackberries: Harvested Acreage, Yield, Production, and Utilization by Variety, 1999-2001

Variety and Year	Area Harvested	Yield Per Acre ¹	Production		Utilization	
			Total	Utilized	Fresh	Processed
	<i>Acres</i>	<i>Pounds</i>	<i>1,000 Pounds</i>	<i>1,000 Pounds</i>	<i>1,000 Pounds</i>	<i>1,000 Pounds</i>
Cultivated Blackberries (OR)						
Marion						
1999	4,100	6,150	25,200	25,200	500	24,700
2000	4,400	7,160	31,500	31,500	300	31,200
2001	4,400	6,230	28,100	27,400	900	26,500
Evergreen						
1999	1,300	8,080	10,500	10,500	500	10,000
2000	1,280	7,730	9,900	9,900	400	9,500
2001	1,300	6,770	10,000	8,800	200	8,600
Other						
1999	450	8,220	3,700	3,700	400	3,300
2000	460	7,610	3,500	3,500	200	3,300
2001	460	11,700	5,470	5,400	300	5,100
All						
1999	5,850	6,740	39,400	39,400	1,400	38,000
2000	6,140	7,310	44,900	44,900	900	44,000
2001	6,160	6,750	43,570	41,600	1,400	40,200

¹ Yield is based on utilized production.

Oregon Blackberries: Price and Value by Variety, 1999-2001

Variety and Year	Price per Pound			Value of Production		
	Fresh	Processed	All	Fresh	Processed	Total
	<i>Dollars</i>	<i>Dollars</i>	<i>Dollars</i>	<i>1,000 Dollars</i>	<i>1,000 Dollars</i>	<i>1,000 Dollars</i>
Cultivated Blackberries (OR)						
Marion						
1999	0.810	0.740	0.741	405	18,278	18,683
2000	1.120	0.490	0.496	336	15,288	15,624
2001	0.990	0.430	0.448	891	11,395	12,286
Evergreen						
1999	0.910	0.520	0.539	455	5,200	5,655
2000	1.140	0.385	0.416	456	3,658	4,114
2001	1.020	0.260	0.277	204	2,236	2,440
Other						
1999	1.380	0.680	0.756	552	2,244	2,796
2000	1.070	0.450	0.485	214	1,485	1,699
2001	1.500	0.410	0.471	450	2,091	2,541
All						
1999	1.010	0.677	0.689	1,412	25,722	27,134
2000	1.120	0.464	0.477	1,006	20,431	21,437
2001	1.100	0.391	0.415	1,545	15,722	17,267

**Sweet Cherries: Bearing Acreage, Yield, Production, and Utilization
by State and United States, 1999-2001 ¹**

State and Year	Bearing Acreage	Yield Per Acre ²	Production		Utilization	
			Total	Utilized	Fresh	Processed
	<i>Acres</i>	<i>Tons</i>	<i>Tons</i>	<i>Tons</i>	<i>Tons</i>	<i>Tons</i>
CA						
1999	18,500	4.38	81,000	79,500	54,200	25,300
2000	22,000	2.14	47,000	45,700	29,600	16,100
2001	25,000	2.21	55,300	51,100	41,300	9,800
ID						
1999			1,900	1,670		
2000			3,000	2,970		
2001			1,400	1,390		
MI						
1999	7,700	3.51	27,000	26,500	950	25,550
2000	7,600	2.58	19,600	19,600	600	19,000
2001	7,400	3.11	23,000	23,000	1,000	22,000
MT						
1999			720	690		
2000			1,100	1,050		
2001			2,020	1,670		
NY						
1999	750	1.40	1,050	1,000		
2000	700	1.29	900	900		
2001	700	1.57	1,100	1,050		
OR						
1999	11,000	3.23	35,500	35,000	14,000	21,000
2000	11,000	3.36	37,000	36,000	14,500	21,500
2001	11,000	3.64	40,000	34,000	15,500	18,500
PA						
1999			800	750	750	
2000			500	500	500	
2001			580	580	580	
UT						
1999	600	1.92	1,150	1,150	800	350
2000	600	4.00	2,400	2,300	1,600	700
2001	600	1.17	700	650	300	350
WA						
1999	18,000	3.72	67,000	67,000	50,000	17,000
2000	18,000	5.28	95,000	95,000	70,000	25,000
2001	22,000	4.82	106,000	106,000	84,000	22,000
US						
1999	58,000	3.73	216,120	213,260	123,410	89,850
2000	61,450	3.36	206,500	204,020	120,760	83,260
2001	68,220	3.37	230,100	219,440	145,660	73,780

¹ Missing data not published to avoid disclosure of individual operations.

² Yield is based on total production.

**Sweet Cherries: Price and Value by State
and United States, 1999-2001¹**

State and Year	Price per Ton			Value of Production		
	Fresh	Processed	All	Fresh	Processed	All
	<i>Dollars</i>	<i>Dollars</i>	<i>Dollars</i>	<i>1,000 Dollars</i>	<i>1,000 Dollars</i>	<i>1,000 Dollars</i>
CA						
1999	1,040.00	494.00	866.00	56,368	12,498	68,866
2000	2,180.00	437.00	1,570.00	64,528	7,036	71,564
2001	1,840.00	390.00	1,560.00	75,992	3,822	79,814
ID						
1999			1,630.00			2,720
2000			1,590.00			4,733
2001			1,300.00			1,802
MI						
1999	1,500.00	498.00	534.00	1,425	12,724	14,149
2000	1,680.00	448.00	486.00	1,008	8,512	9,520
2001	1,280.00	446.00	482.00	1,280	9,812	11,092
MT						
1999			1,560.00			1,076
2000			1,490.00			1,569
2001			762.00			1,272
NY						
1999			1,490.00			1,494
2000			1,370.00			1,230
2001			1,530.00			1,610
OR						
1999	945.00	685.00	789.00	13,230	14,385	27,615
2000	956.00	628.00	760.00	13,862	13,502	27,364
2001	1,000.00	709.00	842.00	15,500	13,117	28,617
PA						
1999	2,600.00		2,600.00	1,950		1,950
2000	2,180.00		2,180.00	1,090		1,090
2001	2,260.00		2,260.00	1,311		1,311
UT						
1999	1,200.00	540.00	999.00	960	189	1,149
2000	1,300.00	500.00	1,060.00	2,080	350	2,430
2001	1,200.00	440.00	791.00	360	154	514
WA						
1999	2,120.00	580.00	1,730.00	106,000	9,860	115,860
2000	2,000.00	589.00	1,630.00	140,000	14,725	154,725
2001	1,580.00	516.00	1,360.00	132,720	11,352	144,072
US						
1999	1,500.00	556.00	1,100.00	184,910	49,969	234,879
2000	1,900.00	536.00	1,340.00	229,601	44,624	274,225
2001	1,590.00	527.00	1,230.00	231,187	38,917	270,104

¹ Missing data not published to avoid disclosure of individual operations.

**Tart Cherries: Bearing Acreage, Yield, Production, and Utilization
by State and United States, 1999-2001 ¹**

State and Year	Bearing Acreage	Yield Per Acre ²	Production		Utilization	
			Total	Utilized	Fresh	Processed
	<i>Acres</i>	<i>Pounds</i>	<i>Million Pounds</i>	<i>Million Pounds</i>	<i>Million Pounds</i>	<i>Million Pounds</i>
CO						
1999			0.6	0.6		
2000			0.9	0.8		
2001			0.8	0.8		
MI						
1999	28,100	6,580	185.0	185.0	1.0	184.0
2000	28,500	7,020	200.0	200.0	1.0	199.0
2001	27,400	10,800	297.0	242.0	1.0	241.0
NY						
1999	2,600	6,540	17.0	17.0	0.1	16.9
2000	2,200	7,550	16.6	16.6	0.1	16.5
2001	2,200	6,680	14.7	14.1	0.1	14.0
OR						
1999	1,300	4,080	5.3	5.3		
2000	1,300	3,380	4.4	4.2		
2001	1,300	1,850	2.4	2.3		
PA						
1999	1,200	6,000	7.2	7.2		
2000	1,200	5,080	6.1	5.6		
2001	1,200	3,250	3.9	3.9		
UT						
1999	2,800	5,180	14.5	14.5		14.5
2000	2,800	11,800	33.0	27.0		27.0
2001	2,800	4,290	12.0	11.5		11.5
WA						
1999			16.5	16.5		
2000			17.5	17.5		
2001			25.5	20.5		
WI						
1999	2,300	4,350	10.0	8.0	0.1	7.9
2000	2,300	4,350	10.0	9.7	0.1	9.6
2001	2,100	6,190	13.0	13.0	0.2	12.8
US						
1999	39,900	6,420	256.1	254.1	1.8	252.3
2000	39,880	7,230	288.5	281.4	1.8	279.6
2001	38,770	9,530	369.3	308.1	1.9	306.2

¹ Missing data not published to avoid disclosure of individual operations.

² Yield is based on total production.

**Tart Cherries: Price and Value by State
and United States, 1999-2001¹**

State and Year	Price per Pound			Value of Production		
	Fresh	Processed	All	Fresh	Processed	All
	<i>Dollars</i>	<i>Dollars</i>	<i>Dollars</i>	<i>1,000 Dollars</i>	<i>1,000 Dollars</i>	<i>1,000 Dollars</i>
CO						
1999			0.303			182
2000			0.265			212
2001			0.325			260
MI						
1999	0.550	0.226	0.228	550	41,584	42,134
2000	0.550	0.180	0.182	550	35,820	36,370
2001	0.550	0.182	0.184	550	43,862	44,412
NY						
1999	0.800	0.153	0.157	80	2,586	2,666
2000	1.200	0.207	0.213	120	3,416	3,536
2001	1.030	0.190	0.196	103	2,660	2,763
OR						
1999			0.239			1,265
2000			0.210			884
2001			0.257			591
PA						
1999			0.293			2,112
2000			0.149			832
2001			0.127			497
UT						
1999		0.186	0.186		2,697	2,697
2000		0.220	0.220		5,940	5,940
2001		0.218	0.218		2,507	2,507
WA						
1999			0.175			2,888
2000			0.143			2,503
2001			0.172			3,526
WI						
1999	0.600	0.190	0.195	60	1,501	1,561
2000	0.510	0.225	0.228	51	2,160	2,211
2001	0.470	0.200	0.204	94	2,560	2,654
US						
1999	0.562	0.216	0.218	1,011	54,494	55,505
2000	0.575	0.184	0.187	1,035	51,453	52,488
2001	0.538	0.184	0.186	1,022	56,188	57,210

¹ Missing data not published to avoid disclosure of individual operations.

**Sweet and Tart Cherries: Processed Utilization, Use,
and Price by State and United States, 1999-2001**

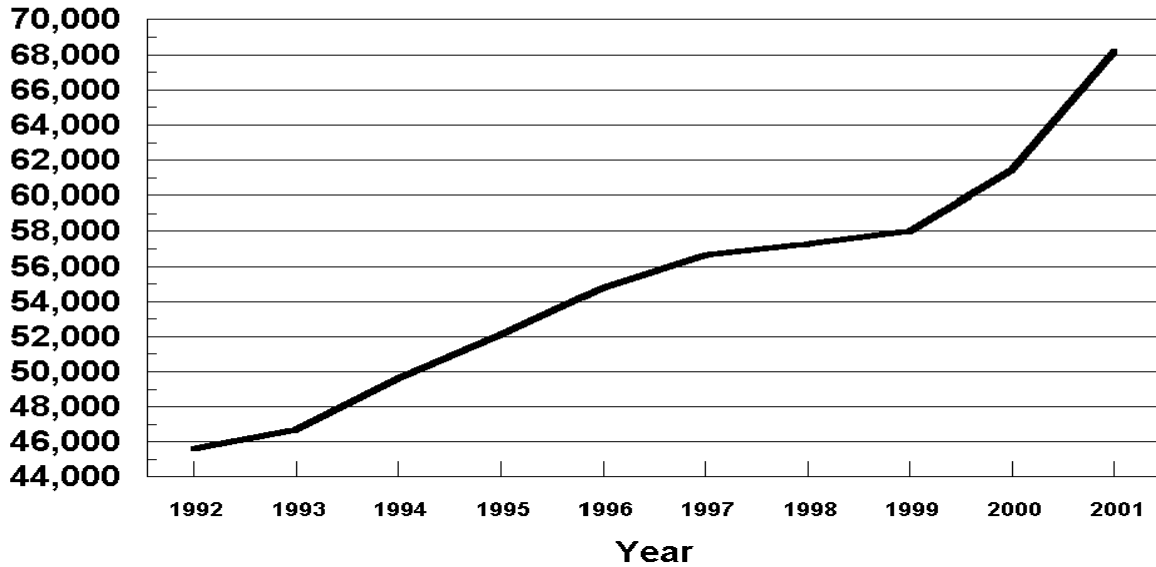
Crop, Use, and State	Processed Utilization					
	Quantity			Price per Unit		
	1999	2000	2001	1999	2000	2001
	<i>Tons</i>	<i>Tons</i>	<i>Tons</i>	<i>Dollars per Ton</i>	<i>Dollars per Ton</i>	<i>Dollars per Ton</i>
Sweet Cherries						
Canned						
MI	3,900	3,000	700	540.00	500.00	450.00
OR	2,000	1,000	3,800	975.00	1,008.00	975.00
WA	5,000	6,000	4,500	730.00	953.00	1,020.00
US	10,900	10,000	9,000	707.00	823.00	957.00
Brined						
MI	19,300	14,650	15,500	470.00	430.00	440.00
OR	16,000	19,000	13,000	710.00	622.00	642.00
WA	8,500	11,500	11,000	570.00	516.00	468.00
Oth Sts	19,985	11,450	8,680	519.00	529.00	466.00
US	63,785	56,600	48,180	559.00	532.00	506.00
Other ¹						
MI	2,350	1,350	5,800	650.00	530.00	460.00
OR	3,000	1,500	1,700	357.00	451.00	625.00
WA	3,500	7,500	6,500	390.00	411.00	248.00
Oth Sts	6,315	6,310	2,600	418.00	291.00	230.00
US	15,165	16,660	16,600	436.00	379.00	358.00
	<i>Million Pounds</i>	<i>Million Pounds</i>	<i>Million Pounds</i>	<i>Dollars per Pound</i>	<i>Dollars per Pound</i>	<i>Dollars per Pound</i>
Tart Cherries						
Canned						
MI	69.0	80.0	80.0	0.239	0.187	0.179
Oth Sts	15.9	15.4	11.9	0.195	0.185	0.170
US	84.9	95.4	91.9	0.231	0.187	0.178
Frozen						
MI	100.0	110.0	151.0	0.230	0.181	0.189
UT	14.5			0.186		
Oth Sts	23.4	34.3	26.0	0.208	0.209	0.206
US	137.9	144.3	177.0	0.222	0.188	0.192
Other ²						
MI	15.0	9.0	10.0	0.144	0.106	0.098
Oth Sts	14.5	30.9	27.3	0.155	0.182	0.181
US	29.5	39.9	37.3	0.150	0.165	0.159

¹ Includes California canned utilization, and other processed utilizations (frozen, juice, etc.) from all States.

² Juice, wine, brined, and dried.

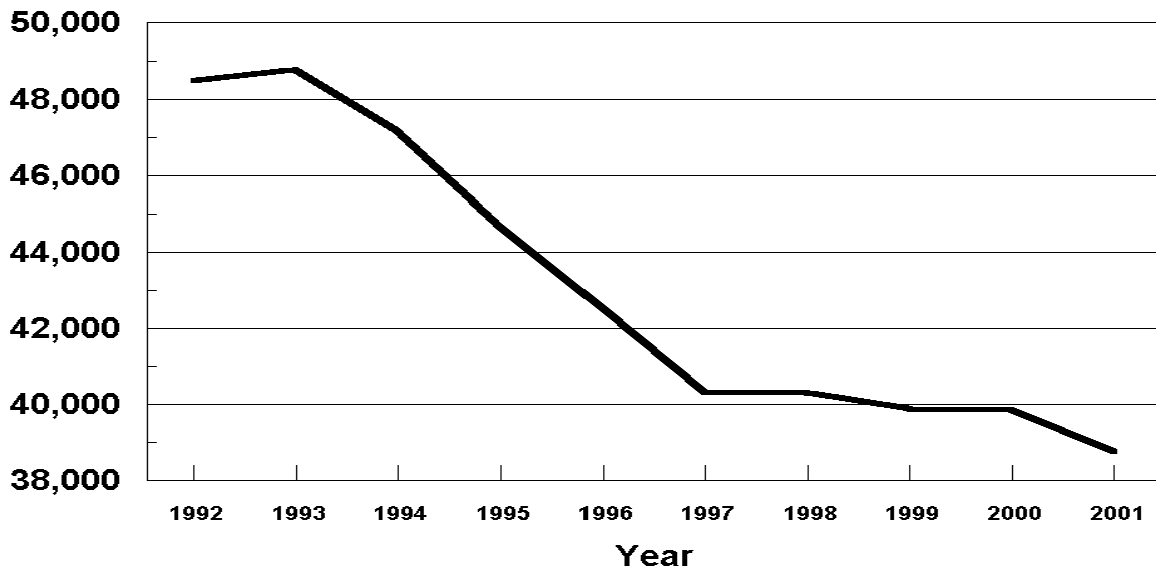
U. S. Sweet Cherries

Bearing Acres
1992 - 2001



U. S. Tart Cherries

Bearing Acres
1992 - 2001



**Cranberries: Area Harvested, Yield, Total and Utilized Production
by State and United States, 1999-2001**

Year and State	Area Harvested	Yield per Acre ¹	Production	
			Total	Utilized
	<i>Acres</i>	<i>Barrels ²</i>	<i>Barrels ²</i>	<i>Barrels ²</i>
1999				
MA	15,000	125.0	1,875,000	1,875,000
NJ	4,000	175.0	700,000	700,000
OR	2,300	142.6	328,000	328,000
WA	1,600	91.9	147,000	147,000
WI	14,600	226.5	3,307,000	3,307,000
US	37,500	169.5	6,357,000	6,357,000
2000				
MA	13,900	140.5	1,953,000	1,953,000
NJ	3,700	132.2	489,000	469,000
OR	2,400	165.8	398,000	394,000
WA	1,500	120.0	180,000	165,000
WI	15,100	178.3	2,692,000	2,598,000
US	36,600	156.1	5,712,000	5,579,000
2001				
MA	12,000	118.0	1,416,000	1,414,000
NJ	3,100	182.6	566,000	412,000
OR	2,400	152.1	365,000	355,000
WA	1,600	88.8	142,000	136,000
WI	15,100	188.1	2,840,000	2,466,000
US	34,200	155.8	5,329,000	4,783,000

¹ Yield is based on total production.

² A barrel weighs 100 pounds.

**Cranberries: Utilization, Price, and Value
by State and United States, 1999-2001**

Year and State	Utilization		Price per Barrel ¹	Value of Utilized Production
	Fresh	Processed		
	<i>Barrels</i> ²	<i>Barrels</i> ²	<i>Dollars</i>	<i>1,000 Dollars</i>
1999				
MA	138,000	1,737,000	16.20	30,381
NJ		700,000	10.10	7,070
OR		328,000	11.50	3,772
WA	13,000	134,000	11.80	1,737
WI	206,000	3,101,000	20.00	66,118
US	357,000	6,000,000	17.20	109,078
2000				
MA	214,000	1,739,000	17.90	34,950
NJ		469,000	15.90	7,457
OR	4,000	390,000	15.20	5,990
WA	37,000	128,000	20.90	3,445
WI	187,000	2,411,000	16.20	42,151
US	442,000	5,137,000	16.80	93,993
2001				
MA	176,000	1,238,000	21.60	30,542
NJ		412,000	19.30	7,952
OR	7,000	348,000	19.90	7,061
WA	34,000	102,000	24.30	3,305
WI	209,000	2,257,000	20.50	50,595
US	426,000	4,357,000	20.80	99,455

¹ Weighted average of co-op and independent sales. Co-op prices represent pool proceeds excluding returns from non-cranberry products and before any deductions for capital stock and other retains.

² A barrel weighs 100 pounds.

**Grapes: Bearing Acreage and Yield by Type,
State, and United States, 1999-2001**

State and Type	Bearing Acreage			Yield per Acre ¹		
	1999	2000	2001	1999	2000	2001
	<i>Acres</i>	<i>Acres</i>	<i>Acres</i>	<i>Tons</i>	<i>Tons</i>	<i>Tons</i>
AZ	4,100	4,100	3,200	5.12	4.88	4.84
AR	1,400	1,400	1,500	3.50	3.00	1.80
CA						
All Types	790,000	827,000	803,000	7.02	8.54	7.42
Wine	424,000	458,000	480,000	6.28	7.34	6.36
Table	87,000	89,000	88,000	8.71	8.70	8.07
Raisin ²	279,000	280,000	235,000	7.61	10.43	9.36
GA	1,200	1,200	1,100	2.75	2.92	2.91
MI	11,700	12,500	12,300	6.40	6.98	2.35
MO	800	850	870	3.50	3.47	2.64
NY	31,500	31,500	31,500	6.51	4.89	4.73
NC	500	600	700	3.80	3.83	2.86
OH	2,000	2,000	2,000	4.60	3.85	3.00
OR	7,400	8,100	8,800	2.42	2.30	2.59
PA	12,800	12,800	12,800	6.88	4.92	4.80
SC ³	300	400		1.20	1.30	
TX ⁴			2,900			3.28
VA ⁴			1,730			2.38
WA						
All Types	41,000	44,000	48,000	6.46	6.02	5.90
Wine	17,000	20,000	24,000	4.12	4.50	4.17
Juice	24,000	24,000	24,000	8.13	7.29	7.63
US	904,700	946,450	930,400	6.89	8.12	7.04

¹ Yield is based on total production.

² In 2001, 41,000 acres of raisin type grapes were enrolled in the California Raisin Industry Diversion program (RID). These acres were deducted from bearing acres.

³ Estimates discontinued in 2001.

⁴ Estimates began in 2001.

**Grapes: Total and Utilized Production, Price, and Value
by Type, State, and United States, 1999-2001**

State and Type	Total Production			Utilized Production		
	1999	2000	2001	1999	2000	2001
	<i>Tons</i>	<i>Tons</i>	<i>Tons</i>	<i>Tons</i>	<i>Tons</i>	<i>Tons</i>
AZ	21,000	20,000	15,500	21,000	20,000	15,500
AR	4,900	4,200	2,700	4,800	3,900	2,500
CA						
All Types	5,542,000	7,059,000	5,962,000	5,542,000	7,059,000	5,962,000
Wine	2,662,000	3,364,000	3,053,000	2,662,000	3,364,000	3,053,000
Table ¹	758,000	774,000	710,000	758,000	774,000	710,000
Raisin ¹	2,122,000	2,921,000	2,199,000	2,122,000	2,921,000	2,199,000
GA	3,300	3,500	3,200	3,000	3,200	3,200
MI	74,900	87,200	28,900	74,900	87,200	28,500
MO	2,800	2,950	2,300	2,800	2,950	2,300
NY	205,000	154,000	149,000	204,000	154,000	149,000
NC	1,900	2,300	2,000	1,900	2,300	2,000
OH	9,200	7,700	6,000	9,100	7,700	6,000
OR	17,900	18,600	22,800	17,900	18,600	22,800
PA	88,000	63,000	61,500	88,000	63,000	61,500
SC ²	360	520		330	480	
TX ³			9,500			9,300
VA ³			4,120			3,780
WA						
All Types	265,000	265,000	283,000	265,000	265,000	283,000
Wine	70,000	90,000	100,000	70,000	90,000	100,000
Juice	195,000	175,000	183,000	195,000	175,000	183,000
US	6,236,260	7,687,970	6,552,520	6,234,730	7,687,330	6,551,380
	Price per Ton			Value of Utilized Production		
	1999	2000	2001	1999	2000	2001
	<i>Dollars</i>	<i>Dollars</i>	<i>Dollars</i>	<i>1,000 Dollars</i>	<i>1,000 Dollars</i>	<i>1,000 Dollars</i>
AZ	801.00	718.00	576.00	16,821	14,369	8,921
AR	473.00	560.00	541.00	2,268	2,185	1,353
CA						
All Types	479.00	401.00	445.00	2,655,766	2,828,545	2,650,873
Wine	585.00	567.00	595.00	1,556,405	1,908,649	1,815,292
Table ¹	552.00	565.00	612.00	418,497	437,448	434,325
Raisin ¹	321.00	165.00	182.00	680,864	482,448	401,256
GA	1,170.00	1,230.00	1,050.00	3,500	3,920	3,370
MI	281.00	277.00	313.00	21,083	24,156	8,926
MO	584.00	555.00	630.00	1,635	1,636	1,448
NY	286.00	298.00	302.00	58,366	45,940	45,004
NC	1,150.00	1,160.00	1,270.00	2,183	2,661	2,532
OH	336.00	327.00	342.00	3,059	2,515	2,053
OR	1,310.00	1,400.00	1,480.00	23,449	26,040	33,744
PA	275.00	265.00	274.00	24,192	16,688	16,871
SC ²	570.00	669.00		188	321	
TX ³			900.00			8,370
VA ³			1,260.00			4,763
WA						
All Types	432.00	481.00	470.00	114,400	127,460	133,071
Wine	910.00	899.00	897.00	63,700	80,910	89,700
Juice	260.00	266.00	237.00	50,700	46,550	43,371
US	469.00	403.00	446.00	2,926,910	3,096,436	2,921,299

¹ Fresh equivalent of dried and not dried.

² Estimates discontinued in 2001.

³ Estimates began in 2001.

**Grapes: Fresh and Processed Utilization, and Price
by Type, State and United States, 1999-2001 ¹**

Utilization, State, and Type	Fresh and Processed Utilization					
	Quantity			Price per Ton		
	1999	2000	2001	1999	2000	2001
	<i>Tons</i>	<i>Tons</i>	<i>Tons</i>	<i>Dollars</i>	<i>Dollars</i>	<i>Dollars</i>
Fresh						
AZ	12,800	12,100	10,200	1,120.00	1,040.00	740.00
AR	800	800		620.00	600.00	
CA						
All Types	868,000	888,000	849,000	652.00	640.00	688.00
Wine	45,000	45,000	45,000	275.00	300.00	300.00
Table	583,000	613,000	587,000	659.00	680.00	720.00
Raisin	240,000	230,000	217,000	704.00	600.00	680.00
GA	1,000	1,000	1,700	1,500.00	1,500.00	1,100.00
MI	500	500	300	800.00	800.00	800.00
MO	150	150	100	651.00	640.00	840.00
NY	2,000	2,000	1,000	600.00	550.00	900.00
OH	200	100	100	520.00	600.00	760.00
PA	1,000	1,500	1,000	615.00	465.00	173.00
Oth Sts	771	675	1,000	1,250.00	1,510.00	1,230.00
US	887,221	906,825	864,400	660.00	647.00	689.00
Processed						
AZ	8,200	7,900	5,300	303.00	226.00	259.00
AR	4,000	3,100		443.00	550.00	
CA						
All Types	4,674,000	6,171,000	5,113,000	447.00	366.00	404.00
Wine	2,617,000	3,319,000	3,008,000	590.00	571.00	599.00
Table	175,000	161,000	123,000	196.00	128.00	95.00
Raisin	1,882,000	2,691,000	1,982,000	272.00	128.00	128.00
GA	2,000	2,200	1,500	1,000.00	1,100.00	1,000.00
MI	74,400	86,700	28,200	278.00	274.00	308.00
MO	2,650	2,800	2,200	580.00	550.00	620.00
NY	202,000	152,000	148,000	283.00	295.00	298.00
OH	8,900	7,600	5,900	332.00	323.00	335.00
OR ²	17,900	18,600	22,800	1,310.00	1,400.00	1,480.00
PA	87,000	61,500	60,500	271.00	260.00	276.00
TX ^{2 3}			9,300			900.00
VA ³			3,780			1,260.00
WA						
All Types	265,000	265,000	283,000	432.00	481.00	470.00
Wine	70,000	90,000	100,000	910.00	899.00	897.00
Juice	195,000	175,000	183,000	260.00	266.00	237.00
Oth Sts	1,459	2,105	3,500	966.00	933.00	758.00
US	5,347,509	6,780,505	5,686,980	438.00	370.00	409.00

¹ Missing data included in Other States to avoid disclosure of individual operations.

² Includes small quantities sold fresh.

³ Estimates began in 2001.

**Grapes: Fresh and Processed Value by Type,
State and United States, 1999-2001 ¹**

Utilization, State, and Type	Fresh and Processed Utilization		
	Value of Utilized Production		
	1999	2000	2001
	<i>1,000 Dollars</i>	<i>1,000 Dollars</i>	<i>1,000 Dollars</i>
Fresh			
AZ	14,336	12,584	7,548
AR	496	480	
CA			
All Types	565,532	568,340	583,700
Wine	12,375	13,500	13,500
Table	384,197	416,840	422,640
Raisin	168,960	138,000	147,560
GA	1,500	1,500	1,870
MI	400	400	240
MO	98	96	84
NY	1,200	1,100	900
OH	104	60	76
PA	615	698	173
Oth Sts	962	1,018	1,232
US	585,243	586,276	595,823
Processed			
AZ	2,485	1,785	1,373
AR	1,772	1,705	
CA			
All Types	2,090,234	2,260,205	2,067,173
Wine	1,544,030	1,895,149	1,801,792
Table	34,300	20,608	11,685
Raisin	511,904	344,448	253,696
GA	2,000	2,420	1,500
MI	20,683	23,756	8,686
MO	1,537	1,540	1,364
NY	57,166	44,840	44,104
OH	2,955	2,455	1,977
OR ²	23,449	26,040	33,744
PA	23,577	15,990	16,698
TX ^{2 3}			8,370
VA ³			4,763
WA			
All Types	114,400	127,460	133,071
Wine	63,700	80,910	89,700
Juice	50,700	46,550	43,371
Oth Sts	1,409	1,964	2,653
US	2,341,667	2,510,160	2,325,476

¹ Missing data included in Other States to avoid disclosure of individual operations.

² Includes small quantities sold fresh.

³ Estimates began in 2001.

**Grapes: Processed Utilization, Use, and Price
by Type, State and United States, 1999-2001**

Use and State	Processed Utilization					
	Quantity			Price per Ton		
	1999	2000	2001	1999	2000	2001
	<i>Tons</i>	<i>Tons</i>	<i>Tons</i>	<i>Dollars</i>	<i>Dollars</i>	<i>Dollars</i>
Canned						
CA						
Raisin	35,000	32,000	29,000	270.00	270.00	270.00
US	35,000	32,000	29,000	270.00	270.00	270.00
Juice ^{1 2}						
MI	71,500	83,600	26,000	260.00	258.00	255.00
NY	152,000	111,000	107,000	262.00	265.00	262.00
OH	7,500	6,400	4,700	259.00	264.00	261.00
PA	74,000	46,000	48,500	262.00	257.00	262.00
WA	195,000	175,000	183,000	260.00	266.00	237.00
Oth Sts	2,050	2,250	650	239.00	325.00	298.00
US	502,050	424,250	369,850	261.00	263.00	249.00
Wine						
CA						
All Types	3,187,000	3,952,000	3,369,000	520.00	499.00	544.00
Wine	2,617,000	3,319,000	3,008,000	590.00	571.00	599.00
Table	150,000	120,000	100,000	187.00	118.00	87.20
Raisin	420,000	513,000	261,000	200.00	125.00	85.70
GA	2,000	2,200	1,500	1,000.00	1,100.00	1,000.00
MI	2,900	3,100	2,200	700.00	825.00	940.00
MO	2,600	2,750	2,150	583.00	550.00	620.00
NY	50,000	41,000	41,000	348.00	377.00	391.00
OH	1,400	1,200	1,200	725.00	640.00	623.00
OR ²	17,900	18,600	22,800	1,310.00	1,400.00	1,480.00
PA	13,000	15,500	12,000	325.00	266.00	333.00
TX ^{2 3}			9,300			900.00
VA ³			3,780			1,260.00
WA	70,000	90,000	100,000	910.00	899.00	897.00
Oth Sts	3,759	3,305	3,400	773.00	987.00	826.00
US	3,350,559	4,129,655	3,568,330	530.00	511.00	560.00
Dried (Fr Basis)						
AZ	7,900	7,600	4,800	290.00	195.00	220.00
CA						
All Types	1,452,000	2,187,000	1,715,000	292.00	128.00	133.00
Table	25,000	41,000	23,000	247.00	157.00	129.00
Raisin	1,427,000	2,146,000	1,692,000	293.00	127.00	133.00
US	1,459,900	2,194,600	1,719,800	292.00	128.00	133.00

¹ Includes small quantities of other processed (jam, jelly, etc.).

² Includes small quantities for other uses.

³ Estimates began in 2001.

**Concord Grapes: Processed Utilization by State
and United States, 1999-2001**

State	Processed Utilization		
	1999	2000	2001
	<i>Tons</i>	<i>Tons</i>	<i>Tons</i>
MI	57,300	64,500	19,000
MO	350	270	300
NY	154,500	113,300	107,200
OH	6,900	5,900	4,300
PA	75,600	45,500	52,000
WA	183,000	160,000	167,000
Oth Sts	2,015	2,205	810
US	479,665	391,675	350,610

**Niagara Grapes: Processed Utilization by State
and United States, 1999-2001**

State	Processed Utilization		
	1999	2000	2001
	<i>Tons</i>	<i>Tons</i>	<i>Tons</i>
MI	14,400	19,100	7,000
NY	17,200	13,900	15,100
OH	400	450	350
PA	6,500	4,050	4,500
WA	12,000	15,000	16,000
US	50,500	52,500	42,950

**Peaches: Bearing Acreage and Yield by Type,
State, and United States, 1999-2001**

State	Bearing Acreage			Yield per Acre ¹		
	1999	2000	2001	1999	2000	2001
	<i>Acres</i>	<i>Acres</i>	<i>Acres</i>	<i>Pounds</i>	<i>Pounds</i>	<i>Pounds</i>
AL	3,400	3,400	3,500	5,880	4,120	6,570
AR	2,800	3,000	3,000	4,290	6,000	4,000
CA						
All	67,800	67,200	67,800	26,900	27,600	25,500
Clingstone	29,800	28,200	28,800	35,500	37,700	33,100
Freestone	38,000	39,000	39,000	20,100	20,300	19,900
CO	1,900	1,900	1,900	1,580	10,000	9,470
CT	330	330	330	6,670	6,060	5,760
GA	18,000	17,000	15,000	6,110	6,760	9,330
ID	820	820	820	9,760	15,900	15,900
IL	1,600	1,600	1,600	11,900	14,400	11,100
IN	650	650	650	4,460	4,000	4,620
KS ²	160			5,000		
KY	330	310	280	6,060	3,550	6,430
LA	350	320	310	2,290	3,750	4,520
MD	1,100	1,100	1,100	8,000	8,180	8,000
MA	330	340	320	6,060	6,180	5,630
MI	4,600	4,800	4,500	5,000	9,900	9,330
MO	1,600	1,600	1,600	6,560	5,940	5,630
NJ	8,000	8,000	8,000	8,750	8,130	9,380
NY	1,600	1,600	1,600	8,750	7,500	7,810
NC	1,550	1,400	1,200	18,100	22,900	10,000
OH	900	900	1,000	9,670	11,600	11,200
OK	1,400	1,300	1,300	10,700	10,800	9,230
OR	950	950	950	7,370	8,420	6,840
PA	5,500	5,500	4,200	13,600	10,900	17,900
SC	16,500	16,500	16,000	9,700	9,090	6,250
TN	600	600	600	5,170	4,170	6,170
TX	8,000	8,000	7,500	1,630	2,630	4,000
UT	1,300	1,300	1,300	4,770	8,460	6,920
VA	1,560	1,260	1,260	9,620	7,940	6,350
WA	2,500	2,500	2,700	20,400	26,000	20,400
WV	1,300	1,200	1,200	9,690	5,830	9,170
US	157,430	155,380	151,520	16,000	16,700	16,100

¹ Yield is based on total production.

² Estimates discontinued in 2000.

**Peaches: Total and Utilized Production, by Type,
State, and United States, 1999-2001**

State	Total Production			Utilized Production		
	1999	2000	2001	1999	2000	2001
	<i>Million Pounds</i>	<i>Million Pounds</i>	<i>Million Pounds</i>	<i>Million Pounds</i>	<i>Million Pounds</i>	<i>Million Pounds</i>
AL	20.0	14.0	23.0	19.0	13.0	22.0
AR	12.0	18.0	12.0	10.5	15.7	10.3
CA						
All	1,822.0	1,855.0	1,727.0	1,791.8	1,808.0	1,677.0
Clingstone	1,059.0	1,064.0	952.0	1,028.8	1,017.0	902.0
Freestone	763.0	791.0	775.0	763.0	791.0	775.0
CO	3.0	19.0	18.0	2.9	17.0	17.5
CT	2.2	2.0	1.9	2.2	2.0	1.9
GA	110.0	115.0	140.0	105.0	110.0	125.0
ID	8.0	13.0	13.0	7.9	13.0	12.9
IL	19.0	23.0	17.8	17.0	20.0	17.1
IN	2.9	2.6	3.0	2.8	2.5	2.9
KS ¹	0.8			0.8		
KY	2.0	1.1	1.8	1.7	1.1	1.8
LA	0.8	1.2	1.4	0.7	1.1	1.3
MD	8.8	9.0	8.8	8.8	9.0	8.8
MA	2.0	2.1	1.8	2.0	2.1	1.7
MI	23.0	47.5	42.0	23.0	45.5	42.0
MO	10.5	9.5	9.0	10.5	9.5	9.0
NJ	70.0	65.0	75.0	60.0	58.0	70.0
NY	14.0	12.0	12.5	12.0	11.3	12.0
NC	28.0	32.0	12.0	28.0	32.0	12.0
OH	8.7	10.4	11.2	7.9	9.1	11.0
OK	15.0	14.0	12.0	13.5	12.5	10.3
OR	7.0	8.0	6.5	6.9	7.8	6.4
PA	75.0	60.0	75.0	73.0	58.0	74.0
SC	160.0	150.0	100.0	130.0	140.0	85.0
TN	3.1	2.5	3.7	3.0	2.3	3.5
TX	13.0	21.0	30.0	11.0	17.3	26.0
UT	6.2	11.0	9.0	6.2	10.0	8.9
VA	15.0	10.0	8.0	12.0	9.0	7.0
WA	51.0	65.0	55.0	51.0	65.0	55.0
WV	12.6	7.0	11.0	12.3	7.0	10.7
US	2,525.6	2,599.9	2,441.4	2,433.4	2,508.8	2,343.0

¹ Estimates discontinued in 2000.

**Peaches: Price and Value by Type, State,
and United States, 1999-2001**

State	Price per Pound			Value of Utilized Production		
	1999	2000	2001	1999	2000	2001
	<i>Dollars</i>	<i>Dollars</i>	<i>Dollars</i>	<i>1,000 Dollars</i>	<i>1,000 Dollars</i>	<i>1,000 Dollars</i>
AL	0.297	0.405	0.418	5,643	5,265	9,196
AR	0.340	0.370	0.407	3,575	5,811	4,193
CA						
All	0.133	0.139	0.147	238,160	251,609	246,743
Clingstone	0.113	0.125	0.122	115,740	127,125	110,044
Freestone	0.160	0.157	0.176	122,420	124,484	136,699
CO	0.640	0.470	0.540	1,855	7,990	9,450
CT	0.650	0.650	0.650	1,430	1,300	1,235
GA	0.373	0.379	0.280	39,171	41,703	35,033
ID	0.472	0.387	0.494	3,726	5,034	6,368
IL	0.389	0.412	0.420	6,613	8,240	7,182
IN	0.369	0.414	0.583	1,033	1,035	1,691
KS ¹	0.420			336		
KY	0.430	0.346	0.487	731	381	877
LA	0.880	0.771	0.871	616	848	1,132
MD	0.471	0.398	0.367	4,145	3,582	3,226
MA	0.800	0.700	0.700	1,600	1,470	1,190
MI	0.237	0.249	0.298	5,440	11,340	12,503
MO	0.417	0.350	0.365	4,379	3,325	3,285
NJ	0.433	0.427	0.405	25,992	24,774	28,350
NY	0.454	0.400	0.311	5,454	4,524	3,736
NC	0.360	0.370	0.400	10,080	11,840	4,800
OH	0.447	0.468	0.490	3,531	4,259	5,390
OK	0.493	0.509	0.459	6,656	6,363	4,728
OR	0.365	0.423	0.427	2,516	3,300	2,735
PA	0.322	0.287	0.335	23,505	16,650	24,810
SC	0.204	0.204	0.425	26,536	28,594	36,098
TN	0.470	0.545	0.484	1,410	1,254	1,694
TX	0.620	0.580	0.570	6,820	10,034	14,820
UT	0.328	0.300	0.218	2,034	3,000	1,936
VA	0.290	0.300	0.317	3,480	2,700	2,219
WA	0.444	0.325	0.338	22,653	21,096	18,588
WV	0.302	0.256	0.300	3,716	1,795	3,210
US	0.190	0.195	0.212	462,836	489,116	496,418

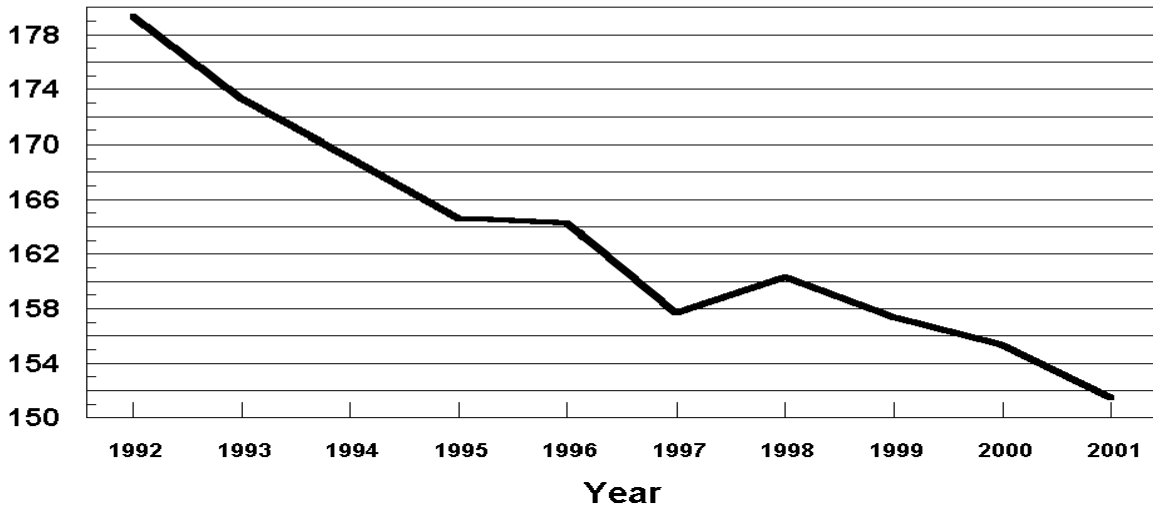
¹ Estimates discontinued in 2000.

U. S. Peaches

Bearing Acres

1992 - 2001

(000) Acres

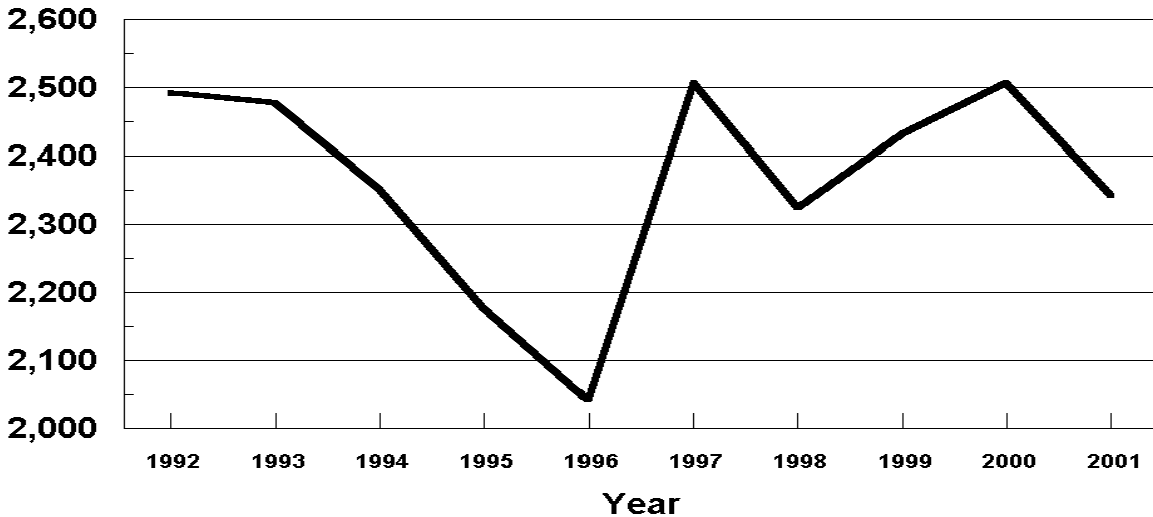


U. S. Peaches

Utilized Production

1992 - 2001

Million Pounds



**Peaches: Fresh and Processed Utilization, and Price
by Type, State and United States, 1999-2001 ¹**

Use and State	Fresh and Processed Utilization					
	Quantity			Price per Unit		
	1999	2000	2001	1999	2000	2001
	<i>Million Pounds</i>	<i>Million Pounds</i>	<i>Million Pounds</i>	<i>Dollars per Pound</i>	<i>Dollars per Pound</i>	<i>Dollars per Pound</i>
Fresh						
AL	19.0	13.0	22.0	0.297	0.405	0.418
CA						
Freestone	508.3	538.0	538.0	0.198	0.190	0.214
CT	2.2	2.0	1.9	0.650	0.650	0.650
IL	17.0	20.0	17.1	0.389	0.412	0.420
IN	2.8	2.5	2.9	0.369	0.414	0.583
KY	1.7	1.1	1.8	0.430	0.346	0.487
LA	0.7	1.1	1.3	0.880	0.771	0.871
MA	2.0	2.1	1.7	0.800	0.700	0.700
MD		9.0	8.6		0.398	0.373
MI	11.0	29.5	27.0	0.320	0.280	0.375
MO	10.5	9.5	9.0	0.417	0.350	0.365
OH	7.9	9.1	11.0	0.447	0.468	0.490
OK	13.5	12.5	10.3	0.493	0.509	0.459
SC	114.0	118.0	80.0	0.216	0.211	0.443
TN	3.0	2.3	3.5	0.470	0.545	0.484
TX	11.0	17.3	26.0	0.620	0.580	0.570
VA	12.0	9.0	7.0	0.290	0.300	0.317
WV			10.7			0.300
Oth Sts	363.7	385.1	382.3	0.403	0.379	0.361
US	1,100.3	1,181.1	1,162.1	0.290	0.281	0.310
	<i>Million Pounds</i>	<i>Million Pounds</i>	<i>Million Pounds</i>	<i>Dollars per Ton</i>	<i>Dollars per Ton</i>	<i>Dollars per Ton</i>
Processed						
CA						
Clingstone	1,028.8	1,017.0	902.0	225.00	250.00	244.00
Freestone ²	254.7	253.0	237.0	171.00	176.00	182.00
MI	12.0	16.0	15.0	320.00	385.00	317.00
SC	16.0	22.0	5.0	239.00	336.00	263.00
Oth Sts	21.6	19.7	21.9	218.00	140.00	179.00
US ³	1,333.1	1,327.7	1,180.9	216.00	237.00	231.00

¹ Missing data included in Other States to avoid disclosure of individual operations.

² CA Freestone quantity and value include dried, price excludes dried.

³ US quantity, price, and value include dried.

**Peaches: Fresh and Processed Value by State
and United States, 1999-2001 ¹**

Use and State	Fresh and Processed Utilization		
	Value of Utilized Production		
	1999	2000	2001
	<i>1,000 Dollars</i>	<i>1,000 Dollars</i>	<i>1,000 Dollars</i>
Fresh			
AL	5,643	5,265	9,196
CA			
Freestone	100,643	102,220	115,132
CT	1,430	1,300	1,235
IL	6,613	8,240	7,182
IN	1,033	1,035	1,691
KY	731	381	877
LA	616	848	1,132
MA	1,600	1,470	1,190
MD		3,582	3,208
MI	3,520	8,260	10,125
MO	4,379	3,325	3,285
OH	3,531	4,259	5,390
OK	6,656	6,363	4,728
SC	24,624	24,898	35,440
TN	1,410	1,254	1,694
TX	6,820	10,034	14,820
VA	3,480	2,700	2,219
WV			3,210
Oth Sts	146,404	146,138	138,058
US	319,133	331,572	359,812
Processed			
CA			
Clingstone	115,740	127,125	110,044
Freestone ²	21,777	22,264	21,567
MI	1,920	3,080	2,378
SC	1,912	3,696	658
Oth Sts	2,354	1,379	1,959
US ³	143,703	157,544	136,606

¹ Missing data included in Other States to avoid disclosure of individual operations.

² CA Freestone quantity and value include dried, price excludes dried.

³ US quantity, price, and value include dried.

**Peaches: Processed Utilization, and Price by Use,
State, and United States, 1999-2001 ¹**

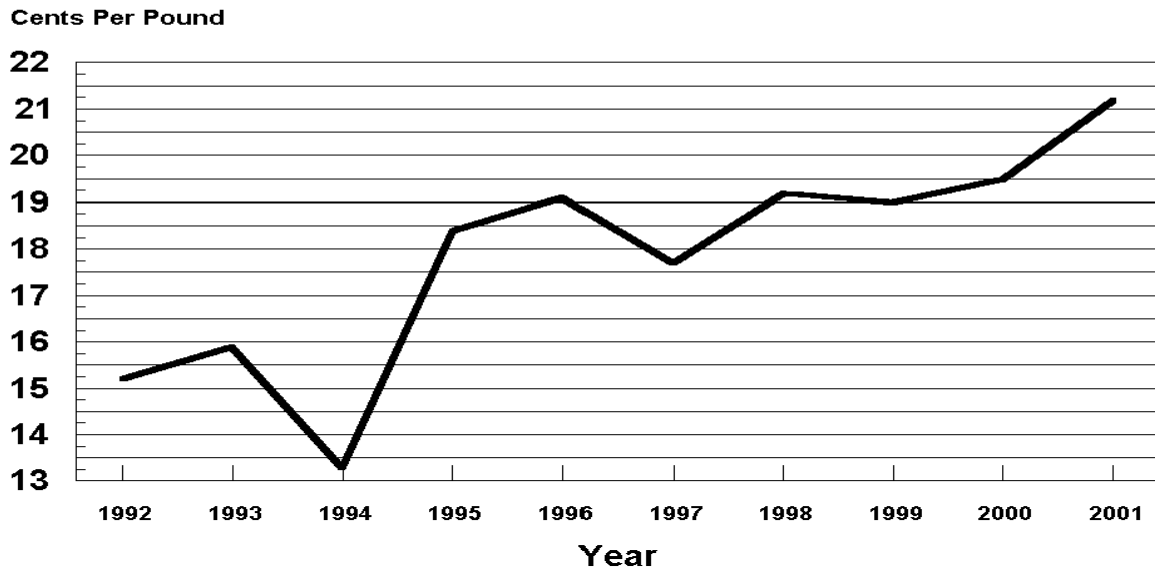
Use and State	Processed Utilization					
	Quantity			Price per Ton		
	1999	2000	2001	1999	2000	2001
	<i>Million Pounds</i>	<i>Million Pounds</i>	<i>Million Pounds</i>	<i>Dollars</i>	<i>Dollars</i>	<i>Dollars</i>
Canned						
CA						
Clingstone	952.4	973.9	870.2	232.00	251.00	244.00
Freestone	21.6			216.00		
Oth Sts	22.0	52.9	36.5	274.00	276.00	232.00
US	996.0	1,026.8	906.7	233.00	252.00	244.00
Frozen						
CA						
Freestone	174.2	185.3	172.0	201.00	200.00	214.00
Oth Sts	29.9	34.2	28.7	228.00	251.00	270.00
US	204.1	219.5	200.7	205.00	208.00	222.00
Dried						
CA						
Freestone	31.4	25.2	29.2	73.00	78.00	51.00
US	31.4	25.2	29.2	73.00	78.00	51.00
Other ²						
Oth Sts	101.6	56.2	44.3	113.00	147.00	150.00
US	101.6	56.2	44.3	113.00	147.00	150.00

¹ Missing data included in Other States to avoid disclosure of individual operations.

² Pickled, wine, brandy, and baby food.

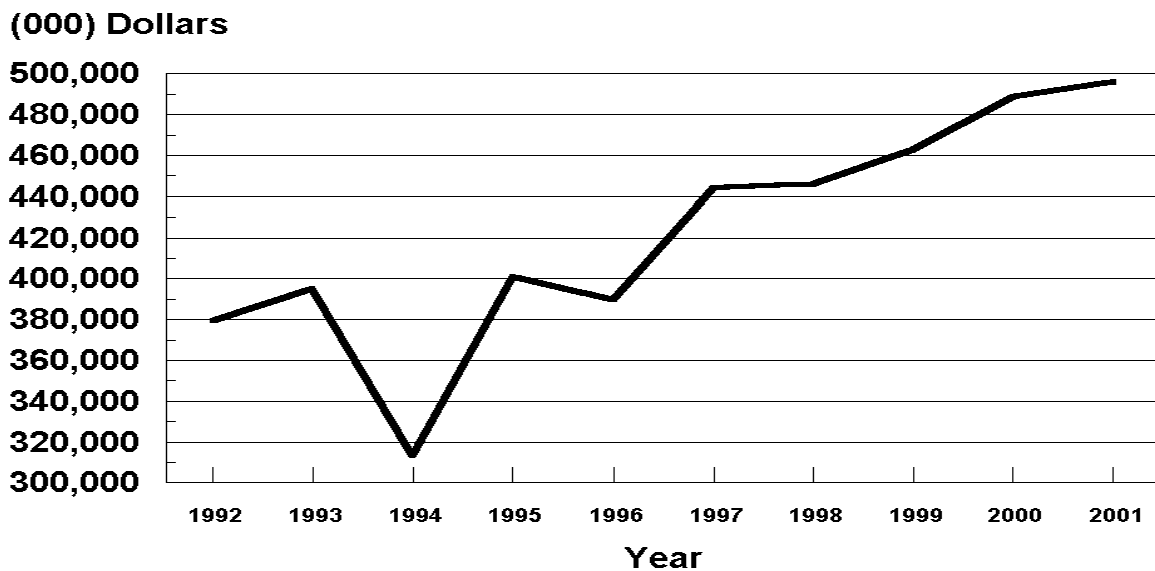
U.S. Peaches

Prices Received 1992 - 2001



U.S. Peaches

Value of Utilized Production 1992 - 2001



**All Pears: Bearing Acreage, Yield, Production, and Utilization
by State and United States, 1999-2001 ¹**

State and Year	Bearing Acreage	Yield Per Acre ²	Production		Utilization	
			Total	Utilized	Fresh	Processed
	<i>Acres</i>	<i>Tons</i>	<i>Tons</i>	<i>Tons</i>	<i>Tons</i>	<i>Tons</i>
CA						
1999	19,300	17.70	341,000	341,000		
2000	19,300	16.20	312,000	297,000		
2001	18,300	16.70	305,000	270,000		
CO						
1999			500	490		
2000			3,000	2,960		
2001			1,900	1,900		
CT					950	
1999			1,050	950		
2000			1,250	1,250		
2001			510	500		
MI						
1999	850	5.88	5,000	4,900		
2000	800	6.50	5,200	5,200		
2001	800	5.75	4,600	3,900		
NY						
1999	2,000	6.25	12,500	11,300		
2000	2,000	7.25	14,500	12,900		
2001	2,000	5.50	11,000	10,000		
OR						
1999	17,800	12.70	226,000	225,500		
2000	17,800	12.40	220,000	219,000		
2001	17,000	13.50	230,000	229,500		
PA						
1999	1,000	4.10	4,100	4,000		
2000	1,000	4.60	4,600	4,400		
2001	1,000	5.50	5,500	5,200		
UT						
1999	180	1.67	300	295		
2000	180	3.33	600	460		
2001	180	1.67	300	300		
WA						
1999	24,400	17.40	425,000	425,000		
2000	24,400	16.60	406,000	406,000		
2001	24,800	18.00	447,000	447,000		
US ³						
1999	66,120	15.40	1,015,450	1,013,435	536,175	477,260
2000	66,060	14.60	967,150	949,170	547,130	402,040
2001	64,630	15.60	1,005,810	968,300	547,190	421,110

¹ Missing data not published to avoid disclosure of individual operations.

² Yield is based on total production.

³ Processed mostly canned, but includes small quantities dried and other uses not published separately to avoid disclosure of individual operations.

**All Pears: Price and Value by State
and United States, 1999-2001 ¹**

State and Year	Price per Ton			Value of Production		
	Fresh	Processed Exc. Dried	All	Fresh	Processed Inc. Dried	All
	<i>Dollars</i>	<i>Dollars</i>	<i>Dollars</i>	<i>1,000 Dollars</i>	<i>1,000 Dollars</i>	<i>1,000 Dollars</i>
CA						
1999			216.00			73,526
2000			228.00			67,776
2001			289.00			78,163
CO						
1999			657.00			322
2000			375.00			1,111
2001			500.00			950
CT						
1999	775.00		775.00	736		736
2000			562.00			703
2001			644.00			322
MI						
1999			265.00			1,300
2000			270.00			1,402
2001			297.00			1,160
NY						
1999			388.00			4,390
2000			353.00			4,551
2001			401.00			4,008
OR						
1999			420.00			94,696
2000			303.00			66,249
2001			278.00			63,700
PA						
1999			425.00			1,700
2000			509.00			2,241
2001			569.00			2,960
UT						
1999			458.00			135
2000			533.00			245
2001			583.00			175
WA						
1999			285.00			121,204
2000			261.00			105,995
2001			271.00			121,289
US ²						
1999	393.00	184.00	294.00	210,607	87,402	298,009
2000	318.00	190.00	264.00	173,762	76,511	250,273
2001	364.00	175.00	282.00	199,294	73,433	272,727

¹ Missing data not published to avoid disclosure of individual operations.

² Processed mostly canned, but includes small quantities dried and other uses not published separately to avoid disclosure of individual operations.

**Pears: Bearing Acreage, Yield, Production, and Utilization
by Type, State, and United States, 1999-2001 ¹**

Type, State and Year	Bearing Acreage	Yield Per Acre ²	Production		Utilization	
			Total	Utilized	Fresh	Processed
	<i>Acres</i>	<i>Tons</i>	<i>Tons</i>	<i>Tons</i>	<i>Tons</i>	<i>Tons</i>
Bartlett ³						
CA						
1999	15,000	20.70	311,000	311,000	84,000	227,000
2000	15,000	18.80	282,000	267,000	81,000	186,000
2001	14,000	19.60	275,000	240,000	67,000	173,000
OR						
1999	5,000	13.20	66,000	65,500	26,500	39,000
2000	5,000	12.00	60,000	59,000	29,000	30,000
2001	4,600	15.20	70,000	69,500	27,500	42,000
WA						
1999	11,200	18.80	210,000	210,000	51,000	159,000
2000	11,200	15.70	176,000	176,000	47,000	129,000
2001	11,300	17.80	201,000	201,000	49,000	152,000
Total						
1999	31,200	18.80	587,000	586,500	161,500	425,000
2000	31,200	16.60	518,000	502,000	157,000	345,000
2001	29,900	18.30	546,000	510,500	143,500	367,000
Other ⁴						
CA						
1999	4,300	6.98	30,000	30,000		
2000	4,300	6.98	30,000	30,000		
2001	4,300	6.98	30,000	30,000		
OR						
1999	12,800	12.50	160,000	160,000		
2000	12,800	12.50	160,000	160,000		
2001	12,400	12.90	160,000	160,000		
WA						
1999	13,200	16.30	215,000	215,000		
2000	13,200	17.40	230,000	230,000		
2001	13,500	18.20	246,000	246,000		
Total						
1999	30,300	13.40	405,000	405,000	359,500	45,500
2000	30,300	13.90	420,000	420,000	372,500	47,500
2001	30,200	14.40	436,000	436,000	388,000	48,000

¹ Missing data not published to avoid disclosure of individual operations.

² Yield is based on total production.

³ Processed mostly canned, but includes small quantities dried and other uses not published separately to avoid disclosure of individual operations.

⁴ Processed mostly juice, but includes small quantities canned and other uses not published separately to avoid disclosure of individual operations.

**Pears: Price and Value by Type, State,
and United States, 1999-2001 ¹**

Type, State and Year	Price per Ton			Value of Production		
	Fresh	Processed Exc. Dried	All	Fresh	Processed Inc. Dried	All
	<i>Dollars</i>	<i>Dollars</i>	<i>Dollars</i>	<i>1,000 Dollars</i>	<i>1,000 Dollars</i>	<i>1,000 Dollars</i>
Bartlett ²						
CA						
1999	143.00	235.00	208.00	12,012	52,664	64,676
2000	172.00	220.00	205.00	13,932	40,734	54,666
2001	430.00	232.00	287.00	28,810	39,963	68,773
OR						
1999	512.00	151.00	297.00	13,568	5,889	19,457
2000	455.00	144.00	297.00	13,195	4,320	17,515
2001	472.00	190.00	302.00	12,980	7,980	20,960
WA						
1999	443.00	159.00	228.00	22,593	25,281	47,874
2000	380.00	208.00	254.00	17,860	26,832	44,692
2001	425.00	149.00	216.00	20,825	22,648	43,473
Total						
1999	298.00	198.00	225.00	48,173	83,834	132,007
2000	287.00	209.00	233.00	44,987	71,886	116,873
2001	436.00	192.00	261.00	62,615	70,591	133,206
Other ³						
CA						
1999			295.00			8,850
2000			437.00			13,110
2001			313.00			9,390
OR						
1999			470.00			75,239
2000			305.00			48,734
2001			267.00			42,740
WA						
1999			341.00			73,330
2000			267.00			61,303
2001			316.00			77,816
Total						
1999	433.00	39.00	389.00	155,644	1,775	157,419
2000	325.00	47.20	293.00	120,907	2,240	123,147
2001	332.00	25.90	298.00	128,702	1,244	129,946

¹ Missing data not published to avoid disclosure of individual operations.

² Processed mostly canned, but includes small quantities dried and other uses not published separately to avoid disclosure of individual operations.

³ Processed mostly juice, but includes small quantities canned and other uses not published separately to avoid disclosure of individual operations.

**Hawaii Crops: Acreage Harvested, Yield, Utilized
Production, and Utilization, 1999-2001**

Crop and Year	Acreage Harvested	Yield Per Acre	Utilized Production	Utilization	
				Fresh	Processed
	<i>Acres</i>	<i>1,000 Pounds</i>	<i>1,000 Pounds</i>	<i>1,000 Pounds</i>	<i>1,000 Pounds</i>
Bananas					
1999	1,420	17.3	24,500	24,500	
2000	1,460	19.9	29,000	29,000	
2001	1,490	18.8	28,000	28,000	
Guavas					
1999	630	17.0	10,700		10,700
2000	680	23.4	15,900		15,900
2001	610	25.1	15,300		15,300
Papayas					
1999	1,940	21.9	42,400	39,400	3,000
2000	1,650	33.0	54,500	50,250	4,250
2001	1,950	28.2	55,000	52,000	3,000
	<i>Acres</i>	<i>1,000 Pounds</i>	<i>Tons</i>	<i>Tons</i>	<i>Tons</i>
Pineapples ¹					
1999	21,000		352,000	122,000	230,000
2000	20,700		354,000	122,000	232,000
2001	20,100		323,000	110,000	213,000

¹ Acreage is total acres in crop, not harvested acreage. Yield is not estimated. Production and processed utilization on a fresh weight basis.

Hawaii Crops: Price and Value, 1999-2001

Crop and Year	Price			Value of Production		
	Fresh	Processed	All	Fresh	Processed	Total
	<i>Dollars per Pound</i>	<i>Dollars per Pound</i>	<i>Dollars per Pound</i>	<i>1,000 Dollars</i>	<i>1,000 Dollars</i>	<i>1,000 Dollars</i>
Bananas						
1999	0.350		0.350	8,575		8,575
2000	0.360		0.360	10,440		10,440
2001	0.380		0.380	10,640		10,640
Guavas						
1999		0.120	0.120		1,284	1,284
2000		0.129	0.129		2,051	2,051
2001		0.141	0.141		2,157	2,157
Papayas						
1999	0.402	0.030	0.376	15,839	90	15,929
2000	0.316	0.030	0.294	15,879	128	16,007
2001	0.279	0.030	0.265	14,508	90	14,598
Pineapples ¹	<i>Dollars per Ton</i>	<i>Dollars per Ton</i>	<i>Dollars per Ton</i>			
1999	594.00	126.00	288.00	72,468	28,980	101,448
2000	585.00	130.00	287.00	71,370	30,160	101,530
2001	626.00	129.00	298.00	68,860	27,477	96,337

¹ Processed price is for fresh fruit delivered to processing plant door. Fresh price is for fruit at wholesale establishments for local sales and at shippers dock for mainland and foreign sales.

**Apples: Unutilized Production by State
and United States, 1999-2001**

Crop	Unharvested Production			Harvested Not Sold		
	1999	2000	2001	1999	2000	2001
	<i>Million Pounds</i>	<i>Million Pounds</i>	<i>Million Pounds</i>	<i>Million Pounds</i>	<i>Million Pounds</i>	<i>Million Pounds</i>
Apples						
AZ	1.2	0.4	0.1	1.1	0.1	
AR	1.1	3.7	1.0	0.1	0.1	0.2
CA		60.0	30.0			
CO		3.0				
CT	1.0	0.5	0.5			
GA	1.0	1.0	0.1			
ID						1.0
IL	15.0	5.0	2.0	1.0	1.0	1.0
IN	5.0	1.2	7.0	0.5		
IA			0.9			0.2
KS	1.4	1.7	1.0	0.6		
KY	1.3	0.7	1.1	0.7	0.2	0.2
ME	9.0	4.0	6.0	2.0		1.0
MD		0.7	0.1			
MA	7.0	6.0	5.0	1.0	1.0	
MI	20.0	5.0	20.0			10.0
MN	3.5	3.8	7.0	1.2	0.8	1.5
MO	2.7	3.5		0.3	0.5	
NH	1.5	1.0	1.0		0.5	0.5
NJ		2.0	4.9		2.0	0.1
NY	30.0	60.0	60.0			
NC	10.0	42.0	3.0	10.0	3.0	2.0
OH	6.0	7.0	2.0	3.0		
OR	5.0	5.0	1.0			
RI	0.7	0.1	0.4			
SC	1.0	3.5	3.9	1.0	0.5	0.1
TN	1.0	0.8	2.5	0.5	0.2	
UT		6.0	6.0			
VT	5.0	3.0	3.0			
VA	10.0	6.0	4.0			
WV	5.0	2.0	10.0			
WI	12.0	8.0	9.0	4.8	5.0	4.0
US	156.4	246.6	192.5	27.8	14.9	21.8

**Miscellaneous Crops: Unutilized Production
by State and United States, 1999-2001**

Crop and State	Unharvested Production			Harvested Not Sold		
	1999	2000	2001	1999	2000	2001
	<i>Million Pounds</i>	<i>Million Pounds</i>	<i>Million Pounds</i>	<i>Million Pounds</i>	<i>Million Pounds</i>	<i>Million Pounds</i>
Peaches						
AL	1.0	1.0	0.9			0.1
AR	1.3	2.1	1.2	0.2	0.2	0.5
CA						
Clingstone				30.2	47.0	50.0
CO		1.5		0.1	0.5	0.5
GA				5.0	5.0	15.0
ID				0.1		0.1
IL	1.0	2.0	0.5	1.0	1.0	0.2
IN	0.1	0.1	0.1			
KY	0.3					
LA				0.1	0.1	0.1
MA			0.1			
MI		1.5			0.5	
NJ	8.0	3.0	2.0	2.0	4.0	3.0
NY	1.5	0.7	0.5	0.5		
OH	0.8	1.3	0.2			
OK	1.4	1.2	1.4	0.1	0.3	0.3
OR	0.1	0.2	0.1			
PA	2.0	2.0	1.0			
SC	5.0	5.0	3.0	25.0	5.0	12.0
TN	0.1	0.2	0.1			0.1
TX	2.0	3.0	3.0		0.7	1.0
UT		0.6			0.4	0.1
VA	2.0	1.0	1.0	1.0		
WV	0.2		0.2	0.1		0.1
US	26.8	26.4	15.3	65.4	64.7	83.1
Cherries (Tart)						
CO		0.1				
MI						55.0
NY						0.6
OR		0.2	0.1			
PA		0.5				
UT		5.0	0.5		1.0	
WA						5.0
WI	2.0	0.2			0.1	
US	2.0	6.0	0.6		1.1	60.6
	<i>Barrels¹</i>	<i>Barrels¹</i>	<i>Barrels¹</i>	<i>Barrels¹</i>	<i>Barrels¹</i>	<i>Barrels¹</i>
Cranberries						
MA						2,000.0
NJ					20,000.0	154,000.0
OR			1,000.0		4,000.0	9,000.0
WA		14,000.0	4,000.0		1,000.0	2,000.0
WI					94,000.0	374,000.0
US		14,000.0	5,000.0		119,000.0	541,000.0

¹ A barrel weighs 100 pounds.

**Miscellaneous Crops: Unutilized Production
by State and United States, 1999-2001**

Crop and State	Unharvested Production			Harvested Not Sold		
	1999	2000	2001	1999	2000	2001
	<i>Tons</i>	<i>Tons</i>	<i>Tons</i>	<i>Tons</i>	<i>Tons</i>	<i>Tons</i>
Apricots						
CA		9,000	7,000			
UT		90	10		50	20
US		9,090	7,010		50	20
Cherries (Sweet)						
CA				1,500	1,300	4,200
ID				230	30	10
MI				500		
MT	15	30	300	15	20	50
NY	50		50			
OR	500	1,000	6,000			
PA	50					
UT		100	50			
US	615	1,130	6,400	2,245	1,350	4,260
Grapes						
AR	90	300	200	10		
GA	300	150			150	
MI			400			
NY	900			100		
OH	100					
SC ¹	25	35		5	5	
TX ²			100			100
VA ²						340
US	1,415	485	700	115	155	440
Kiwifruit						
CA				3,000	3,500	2,800
Pears						
CA		15,000	35,000			
CO	10	40				
CT	50		10	50		
MI	100		400			300
NY	700	1,600	1,000	500		
OR	500	500	500		500	
PA	100	200	100			200
UT	3	40		2	100	
US	1,463	17,380	37,010	552	600	500
Prunes & Plums						
ID				30	150	
MI		150		250	150	
OR	500	1,000	1,200	500	500	
US	500	1,150	1,200	780	800	

¹ Estimates discontinued in 2001.

² Estimates began in 2001.

**Berries: Unutilized Production by State
and United States, 1999-2001**

Crop and State	Unharvested Production			Harvested Not Sold		
	1999	2000	2001	1999	2000	2001
	<i>1,000 Pounds</i>	<i>1,000 Pounds</i>	<i>1,000 Pounds</i>	<i>1,000 Pounds</i>	<i>1,000 Pounds</i>	<i>1,000 Pounds</i>
Red Raspberries WA	1,300	700	700	700	200	300
Cultivated Blueberries						
AL	200	240	270	40	20	
AR	70	220	220	10	40	30
FL	250	500	300	50		
GA	1,000	1,000	1,000			
IN	100	100	100			
NJ	2,000	1,000	1,000			
NY	300	100	100			100
NC		500	230			70
OR			400			
WA	200		500			50
US	4,120	3,660	4,120	100	60	250
Boysenberries OR			70			
Black Raspberries OR			140			
Loganberries OR			10			
Cultivated Blackberries (OR)						
Marion			700			
Evergreen			1,200			
Other			70			
All			1,970			

**Nut Crops: Bearing Acreage and Yield by Crop,
State, and United States, 1999-2001**

Crop and State	Bearing Acreage			Yield per Acre ¹		
	1999	2000	2001	1999	2000	2001
	<i>Acres</i>	<i>Acres</i>	<i>Acres</i>	<i>Tons (In-Shell Basis)</i>	<i>Tons (In-Shell Basis)</i>	<i>Tons (In-Shell Basis)</i>
Hazelnuts						
OR	28,800	28,300	28,100	1.38	0.79	1.76
WA ²	400	350		0.75	0.57	
US	29,200	28,650	28,100	1.37	0.79	1.76
Walnuts (English)						
CA	191,000	193,000	196,000	1.48	1.24	1.56
				<i>Pounds (In-Shell Basis)</i>	<i>Pounds (In-Shell Basis)</i>	<i>Pounds (In-Shell Basis)</i>
Macadamia Nuts						
HI	18,900	17,700	17,800	2,990	2,820	3,150
Pistachios						
CA	71,000	74,600	78,000	1,730	3,260	2,060
				<i>Pounds (Shelled Basis)</i>	<i>Pounds (Shelled Basis)</i>	<i>Pounds (Shelled Basis)</i>
Almonds						
CA	480,000	500,000	525,000	1,740	1,410	1,580

¹ Yield is based on utilized production.

² Estimates discontinued in 2001.

**Nut Crops: Production and Price by Crop,
State, and United States, 1999-2001**

Crop and State	Production			Price per Unit		
	1999	2000	2001	1999	2000	2001
	<i>Tons (In-Shell Basis)</i>	<i>Tons (In-Shell Basis)</i>	<i>Tons (In-Shell Basis)</i>	<i>Dollars per Ton</i>	<i>Dollars per Ton</i>	<i>Dollars per Ton</i>
Hazelnuts						
OR	39,700	22,300	49,500	890.00	890.00	701.00
WA ¹	300	200		900.00	960.00	
US	40,000	22,500	49,500	890.00	891.00	701.00
Walnuts (English)						
CA	283,000	239,000	305,000	886.00	1,240.00	1,120.00
	1,000 Pounds					
	<i>(In-Shell Basis)</i>	<i>(In-Shell Basis)</i>	<i>(In-Shell Basis)</i>	<i>Dollars per Pound</i>	<i>Dollars per Pound</i>	<i>Dollars per Pound</i>
Macadamia Nuts						
HI	56,500	50,000	56,000	0.670	0.590	0.580
Pistachios						
CA	123,000	243,000	161,000	1.330	1.010	0.990
	1,000 Pounds					
	<i>(Shelled Basis)</i>	<i>(Shelled Basis)</i>	<i>(Shelled Basis)</i>			
Almonds ²						
CA	833,000	703,000	830,000	0.86	0.97	0.90

¹ Estimates discontinued in 2001.

² Price and value are based on the edible portion of the crop only. Production includes inedible quantities of no value as follows: 1999 - 33.3 million pounds; 2000 - 28.1 million pounds; and 2001 - 34.0 million pounds.

Nut Crops: Use by Crop, State, and United States, 1999-2001

Crop and State	Production					
	Sold In-Shell			Sold Shelled ¹		
	1999	2000	2001	1999	2000	2001
	<i>Tons</i>	<i>Tons</i>	<i>Tons</i>	<i>Tons</i>	<i>Tons</i>	<i>Tons</i>
Hazelnuts						
OR	24,500	13,800	32,500	15,200	8,500	17,000
WA ²	100	125		200	75	
US	24,600	13,925	32,500	15,400	8,575	17,000
Walnuts (English)						
CA	76,000	64,000	80,000	207,000	175,000	225,000
	<i>1,000 Pounds</i>	<i>1,000 Pounds</i>	<i>1,000 Pounds</i>	<i>1,000 Pounds</i>	<i>1,000 Pounds</i>	<i>1,000 Pounds</i>
Pecans						
US	40,500	21,850	24,600	365,600	188,000	313,900
	<i>Marketable In-Shell</i>	<i>Marketable In-Shell</i>	<i>Marketable In-Shell</i>	<i>Shelling Stock ¹</i>	<i>Shelling Stock ¹</i>	<i>Shelling Stock ¹</i>
Pistachios						
CA	105,000	190,000	127,000	18,000	53,000	34,000

¹ In-shell basis.

² Estimates discontinued in 2001.

**Nut Crops: Value and Meat Production by Crop,
State, and United States, 1999-2001**

Crop and State	Value of Utilized Production		
	1999	2000	2001
	<i>1,000 Dollars</i>	<i>1,000 Dollars</i>	<i>1,000 Dollars</i>
Hazelnuts			
OR	35,333	19,847	34,700
WA ¹	270	192	
US	35,603	20,039	34,700
Walnuts (English)			
CA	250,738	296,360	341,600
Macadamia Nuts			
HI	37,855	29,500	32,480
Pistachios			
CA	163,590	245,430	159,390
Almonds ²			
CA	687,742	666,487	731,880
	Meat Production of Nuts Sold Shelled		
	1999	2000	2001
	<i>Tons</i>	<i>Tons</i>	<i>Tons</i>
Hazelnuts			
OR	6,000	3,410	6,800
WA ¹	80	30	
US	6,080	3,440	6,800
Walnuts (English)			
CA	87,000	75,000	95,000
	<i>1,000 Pounds</i>	<i>1,000 Pounds</i>	<i>1,000 Pounds</i>
Pecans			
US	144,400	83,000	135,000
Pistachios			
CA	8,500	24,900	17,300

¹ Estimates discontinued in 2001.

² Price and value are based on the edible portion of the crop only. Production includes inedible quantities of no value as follows: 1999 - 33.3 million pounds; 2000 - 28.1 million pounds; and 2001 - 34.0 million pounds.

**Pecans: Utilized Production and Price by Variety,
State, and United States, 1999-2001**

Variety and State	Utilized Production			Price per Pound		
	1999	2000	2001	1999	2000	2001
	<i>1,000 Pounds</i>	<i>1,000 Pounds</i>	<i>1,000 Pounds</i>	<i>Dollars</i>	<i>Dollars</i>	<i>Dollars</i>
Improved Varieties ¹						
AL	7,000	10,000	10,000	0.850	0.900	0.580
AZ	22,800	14,500	21,000	1.190	1.310	0.460
AR	1,500	650	1,950	0.620	1.000	0.600
CA	1,900	3,400	3,700	1.270	1.520	0.810
FL	1,100	1,200	1,200	0.900	1.050	0.510
GA	85,000	65,000	85,000	0.890	1.230	0.660
LA	4,000	3,500	3,500	1.000	1.250	0.600
MS	3,500	2,500	3,000	0.900	0.970	0.650
NM	52,000	35,000	60,000	1.200	1.370	0.640
NC	800	1,400	2,700	1.100	1.150	0.650
OK	3,000	200	2,000	0.880	1.300	0.530
SC	1,800	1,200	2,500	0.840	1.110	0.640
TX	35,000	22,000	50,000	1.000	1.300	0.800
US	219,400	160,550	246,550	1.010	1.260	0.662
Native and Seedling						
AL	6,000	5,000	5,000	0.500	0.600	0.360
AR	2,300	250	650	0.570	0.750	0.400
FL	2,600	2,100	2,100	0.650	0.600	0.420
GA	35,000	15,000	25,000	0.590	0.980	0.450
KS	5,000	550	2,200	0.680	0.830	0.400
LA	18,000	14,500	10,500	0.550	0.600	0.350
MS	1,500	1,000	1,500	0.550	0.520	0.450
NC	400	200	500	0.750	0.800	0.450
OK	60,000	2,300	18,000	0.550	0.800	0.420
SC	900	400	1,500	0.750	0.920	0.460
TX	55,000	8,000	25,000	0.600	0.750	0.400
US	186,700	49,300	91,950	0.577	0.754	0.412
All Pecans						
AL	13,000	15,000	15,000	0.688	0.800	0.507
AZ	22,800	14,500	21,000	1.190	1.310	0.460
AR	3,800	900	2,600	0.590	0.931	0.550
CA	1,900	3,400	3,700	1.270	1.520	0.810
FL	3,700	3,300	3,300	0.724	0.764	0.453
GA	120,000	80,000	110,000	0.803	1.180	0.612
KS	5,000	550	2,200	0.680	0.831	0.400
LA	22,000	18,000	14,000	0.632	0.726	0.413
MS	5,000	3,500	4,500	0.795	0.841	0.583
NM	52,000	35,000	60,000	1.200	1.370	0.640
NC	1,200	1,600	3,200	0.983	1.110	0.619
OK	63,000	2,500	20,000	0.566	0.840	0.431
SC	2,700	1,600	4,000	0.810	1.060	0.573
TX	90,000	30,000	75,000	0.756	1.150	0.667
US	406,100	209,850	338,500	0.814	1.140	0.594

¹ Budded, grafted, or topworked varieties.

**Pecans: Value of Production by Variety,
State, and United States, 1999-2001**

Variety and State	Value of Production		
	1999	2000	2001
	<i>1,000 Dollars</i>	<i>1,000 Dollars</i>	<i>1,000 Dollars</i>
Improved Varieties ¹			
AL	5,950	9,000	5,800
AZ	27,132	18,995	9,660
AR	930	650	1,170
CA	2,413	5,168	2,997
FL	990	1,260	612
GA	75,650	79,950	56,100
LA	4,000	4,375	2,100
MS	3,150	2,425	1,950
NM	62,400	47,950	38,400
NC	880	1,610	1,755
OK	2,640	260	1,060
SC	1,512	1,332	1,600
TX	35,000	28,600	40,000
US	222,647	201,575	163,204
Native and Seedling			
AL	3,000	3,000	1,800
AR	1,311	188	260
FL	1,690	1,260	882
GA	20,650	14,700	11,250
KS	3,400	457	880
LA	9,900	8,700	3,675
MS	825	520	675
NC	300	160	225
OK	33,000	1,840	7,560
SC	675	368	690
TX	33,000	6,000	10,000
US	107,751	37,193	37,897
All Pecans			
AL	8,950	12,000	7,600
AZ	27,132	18,995	9,660
AR	2,241	838	1,430
CA	2,413	5,168	2,997
FL	2,680	2,520	1,494
GA	96,300	94,650	67,350
KS	3,400	457	880
LA	13,900	13,075	5,775
MS	3,975	2,945	2,625
NM	62,400	47,950	38,400
NC	1,180	1,770	1,980
OK	35,640	2,100	8,620
SC	2,187	1,700	2,290
TX	68,000	34,600	50,000
US	330,398	238,768	201,101

¹ Budded, grafted, or topworked varieties.

Definition of Terms

Apples, Commercial Crop refers to orchards of 100 or more bearing age trees.

Bearing Acreage - An orchard, grove, or vineyard is considered bearing when it reaches an age when it can normally be expected to produce a commercially significant quantity of the crop. Bearing age is a function of many factors including variety, rootstock, year planted, etc. Bearing acreage is primarily based upon periodic orchard surveys. In non-survey years, bearing acreage is based on trends, county extension service data, end-of-year production surveys, and other indications.

Prices are a marketing year average for all methods of sale. For a crop sold for both fresh market and processing, the **Marketing Year Average Price (MYA)** is a weighted average of the fresh and processing price.

Prices for fresh fruit are the average prices producers receive at the point of first sale. This is commonly referred to as the **average price as sold**. Since the point of first sale is not the same for all producers, prices for the various methods of sale are weighted by the proportionate quantity sold. For example, if in a given State part of the fruit is sold F.O.B. packed by growers, part is sold as bulk fruit at the packinghouse door, and some is sold retail at roadside stands, the fresh fruit **average price as sold** is a weighted average of the average price for each method of sale. The exception is fresh fruit sales in California, Washington, and New York (apples only) which are equivalent returns at packinghouse door. The equivalent packinghouse returns represent adjusted prices.

F.O.B. packed prices are adjusted to an equivalent incoming packinghouse door price by subtracting all costs that accumulate between the incoming packinghouse door and the F.O.B. price. These costs include grading, packing, inspecting fees, selling, and other costs.

Prices for fruit sold for processing are equivalent returns for fruit delivered to the processing plant door except for cranberries, California olives, and clingstone peaches which are priced at the first delivery point.

Crop value estimates in this report cover the marketing season or crop year and should not be confused with cash receipts from these crops which are on a calendar year.

Total Production is the quantity actually harvested plus quantities which would have been acceptable for fresh market or processing but were not harvested because of economic or natural reasons.

Unutilized Production is the difference between total and utilized production which is fruit not harvested for economic or natural reasons and harvested fruit not sold or utilized.

Utilization refers to first utilization, not necessarily final utilization. For example, frozen fruit includes some fruit that may be later used for making preserves. Grade-outs for fresh market fruit which are processed are included in the processing quantity. Fruit graded-out from canning or freezing and utilized for juice is included with juice.

Utilized Production is the amount sold plus the quantities used at home or held in storage.

Yield per Acre is based on total production which includes unharvested production and fruit harvested but not sold due to marketing conditions.

State Value of Utilized Production and MYA Price Computations

The following procedure is used to compute State Values of Utilized Production and MYA Prices:

Fresh Market Value = Fresh Market MYA
Times
Fresh Market Utilization

Process Market Value = Process Market MYA
Times
Process Market Utilization

"All" Sales Value = Fresh Market Value
Plus
Process Market Value

"All" Sales MYA = "All" Sales Value
Divided By
"All" Sales Utilization

For commodities with components not identified by market channel, substitute breakdown name for fresh/processing market and use the same procedure.

U.S. MYA Price Computations

The following procedure is used to compute the U.S. MYA Prices:

Fresh Market MYA = Fresh Market Value For All States
Divided By
Fresh Market Utilization For All States

Process Market MYA = Process Market Value For All States
Divided By
Process Market Utilization For All States

"All" Sales MYA = Sales Value For All States
Divided By
Sales Utilization For All States

Marketing Seasons for Noncitrus Fruits ¹

Apples:

All South Atlantic States, plus AR, CA, IL, IN, KY, MO, NM, TN June - May
OR, WA August - July
All other States July - June

Apricots:

Fresh Fruit May 25 - August 20
Canning June 15 - August 15
Dried (CA) June 20 - August 20

Avocados:

CA November 1 through November 30 the following year
FL June 20 - February 28
HI January 1 - December 31 (peak harvest March 1 - April 30)

Bananas: January 1 - December 31

Cherries, Sweet: May 1 - August 15

Cherries, Tart: June 15 - August 20

Cranberries: September 5 - December 20

Dates: August 15 - March 15

Figs:

Fresh Fruit June 5 - October 31
Canning August 1 - October 15
Dried (CA) June 20 - October 31

Grapes:

Fresh (CA) May 25 - April 30
Fresh (AZ) June 5 - July 15
Fresh (All other States) July 10 - October 31
Crushed for Juice, Wine, or Brandy August 1 - December 15
Dried for Raisins (CA) September 1 - May 31

Guavas: January 1 - December 31 (peak harvest September 1 - October 31)

Kiwifruit: November 1 - April 30

Nectarines: June 10 - August 31

¹See footnote on next page.

Marketing Seasons for Noncitrus Fruits ¹ (continued)

Olives:	September 25 - March 15
Papayas:	January 1 - December 31
Peaches:	
Fresh (GA and SC)	May 20 - August 31
Fresh (Other South Atlantic States, South Central States, CA)	June 1 - September 30
Fresh (New England States, ID, MI, NY)	August 1 - September 30
Fresh (All other States)	July 1 - September 30
Canning (CA)	July 1 - September 10
Dried (CA)	August 1 - October 10
Pears:	
Fresh (CA)	July 1 - April 30
Fresh (WA and OR)	August 10 - May 31
Fresh (Other States)	July 1 - December 15
Canning and Dried (CA, OR, WA)	August 1 - November 30
Pineapples:	January 1 - December 31 (peak harvest March 1 - July 31)
Plums:	
Fresh (CA)	May 25 - September 30
Canning (CA)	June 1 - September 30
Prunes, Dried (CA):	August 1 - April 30
Prune and Plums:	
Fresh and Canning (ID, MI, OR, WA)	August 10 - October 20

Marketing Seasons for Tree Nuts ¹

Almonds:	August 5 - November 15
Hazelnuts (Filberts):	October 1 - September 30
Macadamia Nuts:	January 1 - December 31 (peak harvest August 1 - December 31)
Pecans:	September 30 - March 15
Pistachios:	September 1 - October 31
Walnuts:	September 15 - December 31

¹ For detail by States, see Agricultural Handbook No. 186, "Fruits and Tree Nuts, Blooming, Harvesting, and Marketing Dates", Dec 1975.

Information Contacts

Listed below are the commodity specialists in the Crops Branch of the National Agricultural Statistics Service to contact for additional information.

Mark Harris, Chief	(202) 720-2127
Field Crops Section	
Greg Thessen, Head	(202) 720-2127
Dave DeWalt - Cotton, Cotton Ginnings	(202) 720-5944
Herman Ellison - Soybeans, Minor Oilseeds	(202) 720-7369
Lance Honig - Wheat, Rye	(202) 720-8068
Darin Jantzi - Corn, Proso Millet	(202) 720-9526
Troy Joshua - Hay, Sorghum	(202) 690-3234
Mark E. Miller - Oats, Sugar Crops, Weekly Crop Weather	(202) 720-7621
Mark R. Miller - Peanuts, Rice, Barley	(202) 720-7688
Fruit, Vegetable & Special Crops Section	
Jim Smith, Head	(202) 720-2127
Arvin Budge - Dry Beans, Potatoes, Sweet Potatoes	(202) 720-4285
Kathy Broussard - Citrus, Tropical Fruits	(202) 720-5412
Debbie Flippin - Austrian Winter Peas, Dry Edible Peas, Lentils, Mint, Mushrooms, Peaches, Pears, Wrinkled Seed Peas	(202) 720-3250
Steve Gunn - Apples, Cherries, Cranberries, Prunes, Plums	(202) 720-4288
Mike Miller - Berries, Grapes, Maple Syrup, Tobacco	(202) 720-7235
Kim Ritchie - Hops	(360) 902-1940
Betty Johnston - Nuts, Floriculture, Nursery	(202) 720-4215
Biz Wallingsford - Fresh and Processing Vegetables, Onions, Strawberries	(202) 720-2157

The next "Noncitrus Fruits and Nuts 2002 Summary" report will be released January 2003.

The United States Department of Agriculture (USDA) prohibits discrimination in all its programs on the basis of race, color, national origin, gender, religion, age, disability, political beliefs, sexual orientation, and marital or family status. (Not all prohibited bases apply to all programs.) Persons with disabilities who require alternative means for communication of program information (braille, large print, audiotape, etc.) should contact the USDA's TARGET Center at 202-720-2600 (voice and TDD).

To file a complaint of discrimination, write USDA, Director, Office of Civil Rights, Room 326-W, Whitten Building, 1400 Independence Avenue, SW, Washington, D.C., 20250-9410, or call 202-720-5964 (voice or TDD). USDA is an equal opportunity provider and employer.

ACCESS TO REPORTS!!

For your convenience, there are several ways to obtain NASS reports, data products, and services:

INTERNET ACCESS

All NASS reports are available free of charge on the worldwide Internet. For access, connect to the Internet and go to the NASS Home Page at: <http://www.usda.gov/nass/>. Select "Today's Reports" or Publications and then Reports by Calendar or Publications and then Search, by Title or Subject.

E-MAIL SUBSCRIPTION

There are two options for subscribing via e-mail. All NASS reports are available by subscription free of charge direct to your e-mail address. 1) Starting with the NASS Home Page at <http://www.usda.gov/nass/>, click on **Publications**, then click on the **Subscribe by E-mail** button which takes you to the page describing e-mail delivery of reports. Finally, click on **Go to the Subscription Page** and follow the instructions. 2) If you do NOT have Internet access, send an e-mail message to: usda-reports@usda.mannlib.cornell.edu. In the body of the message type the word: **list**.

AUTOFAX ACCESS

NASSFax service is available for some reports from your fax machine. Please call 202-720-2000, using the handset attached to your fax. Respond to the voice prompts. Document 0411 is a list of available reports.

PRINTED REPORTS OR DATA PRODUCTS

CALL OUR TOLL-FREE ORDER DESK: 800-999-6779 (U.S. and Canada)
Other areas, please call 703-605-6220 FAX: 703-605-6900
(Visa, MasterCard, check, or money order acceptable for payment.)

ASSISTANCE

For **assistance** with general agricultural statistics or further information about NASS or its products or services, contact the **Agricultural Statistics Hotline** at **800-727-9540**, 7:30 a.m. to 4:00 p.m. ET, or e-mail: nass@nass.usda.gov.
