



United States
Department of
Agriculture

National
Agricultural
Statistics
Service



Noncitrus Fruits and Nuts 2002 Preliminary Summary

January 2003

Fr Nt 1-3 (03)

USDA



Contents

	Page
Noncitrus Fruits and Tree Nuts	
Bearing Acreage, U.S	7
Bearing Acreage and Yield per Acre by Crop	4
Narrative	3
Price and Value by Crop	6
Production Utilization, U.S.	7
Total and Utilized Production by Crop.	5
Noncitrus Fruits	
Apples, Commercial Crop	10, 66
Apricots	20, 26, 27, 68
Avocados	20
Bananas	64
Berries (excluding strawberries)	32, 69
California Dry Fruits	27
Cherries, Sweet	38, 42, 68
Cherries, Tart	40, 42, 67
Cranberries	44, 67
Dates	20
Figs	22, 26, 27
Grapes	27, 46, 68
Guavas	64
Hawaii Crops	64
Kiwifruit	22, 68
Nectarines	22
Olives	22, 26
Papayas	64
Peaches	27, 52, 67
Pears	27, 60, 68
Pineapples	64
Plums	22
Prunes (dried basis)	24, 27
Prunes and Plums	24, 26, 68
Strawberries	28
Unutilized Production	66
Tree Nuts	
Almonds	70
Hazelnuts	70
Macadamia Nuts	70
Pecans	72, 74
Pistachios	70
Walnuts	70
Definition of Terms	76
Information Contacts	80
Marketing Seasons	78
State Value of Utilized Production Computation	77
U.S. MYA Price Computation	77

This page intentionally left blank.

2002 Noncitrus Fruit Utilized Production Up 2 Percent, Value Up 5 Percent

In 2002, the Nation's utilized production of the leading noncitrus fruit crops totaled 16.8 million tons, up 2 percent for comparable crops from the 2001 utilized production. Utilized production increased from 2001 for apricots, blackberries, California raspberries, cranberries, figs, grapes, nectarines, peaches, California prunes, and strawberries.

Value of utilized production for noncitrus fruit crops totaled 8.28 billion dollars, up 5 percent from 2001. The value of apples, strawberries, and peaches increased 12 percent, 14 percent, and 3 percent, respectively, from the previous year. However, the value of grapes decreased 1 percent.

Highlights

Utilized apple production for 2002 is estimated at 8.47 billion pounds, down 8 percent from the 2001 level. Washington's utilized production increased 5 percent compared to the weather reduced 2001 crop. California, Michigan, New York, and Pennsylvania decreased total utilized production from the previous year due to poor weather and less bearing acreage.

Utilized grape production for 2002 totaled 7.14 million tons, up 9 percent from the 2001 crop. The California crop, which accounts for 91 percent of the 2002 U.S. utilized grape production, is up 9 percent from the previous year. Also for California, wine type production increased 2 percent from 2001, raisin type production rose 20 percent, and table type production is 5 percent higher. Excellent weather and more bearing acreage in California contributed to these production increases. Utilized production also increased from 2001 in Arkansas, Michigan, Missouri, New York, North Carolina, Virginia, and Washington.

Utilized peach production in 2002 is estimated at 2.47 billion pounds, up 6 percent from the previous year but 1 percent below 2000. The California crop, accounting for 76 percent of the U.S. utilized peach production, is up 12 percent from 2001. For California, Clingstone and Freestone peach production increased 19 percent and 3 percent, respectively, from 2001. California experienced excellent growing conditions during 2002.

Utilized pear production for 2002, at 911,000 tons, is down 6 percent from the previous year. Washington, the top producing State, utilized 401,000 tons, 9 percent below 2001. California, at 294,000 tons and the second largest producer, is up 9 percent from the previous season. Utilized pear production in Oregon, the third largest State, is 198,000 tons, down 14 percent from 2001.

U.S. Nut Production Up 9 Percent, Value Up 26 Percent

The 2002 U.S. nut production (in-shell basis) rose to 1.42 million tons, a 9 percent increase from a year earlier. Almond production totaled 857,600 tons, up 28 percent from 2001. This represents a record high production for almonds in the U.S. The pistachio crop totaled 150,000 tons for a new record high. This is an increase of 86 percent over the crop of 80,500 tons realized in 2001. Hazelnut production, at 18,000 tons, is down 64 percent from 2001. Walnut production for 2002 is estimated at 282,000 tons, 8 percent below the previous year. Macadamia production, at 26,000 tons, is down 7 percent from 2001. Pecan production for 2002 is estimated at 89,200 tons, a 47 percent decrease from 2001.

The 2002 U.S. value of utilized nut production is estimated at 1.91 billion dollars, up 26 percent from 2001. The 2002 almond value, estimated at 1.05 billion dollars, is up 42 percent from 2001. Pistachio value for 2002, at 333 million dollars, is double the 2001 value because of increased production. Hazelnut value decreased 48 percent to 18.0 million dollars from the 2001 value. The pecan crop translated into a 16 percent reduction in value due to decreased production. The macadamia value, at 28.6 million dollars, is 13 percent below the previous year.

**Noncitrus Fruits and Nuts: Bearing Acreage and Yield per Acre
by Crop, United States, 2000-2002**

Crop	Bearing Acreage			Yield per Acre		
	2000	2001	2002	2000	2001	2002
	<i>Acres</i>	<i>Acres</i>	<i>Acres</i>	<i>Tons</i>	<i>Tons</i>	<i>Tons</i>
Noncitrus Fruits						
Apples	429,700	416,550	404,950	12.30	11.30	10.60
Apricots	20,380	19,430	18,430	4.75	4.24	4.89
Avocados ¹	65,220	64,130		3.67	3.45	
Bananas (HI) ²	1,460	1,490	1,250	9.95	9.40	7.60
Blackberries (OR) ^{2 3}	6,140	6,160	5,980	3.66	3.38	3.53
Blueberries						
Cultivated ²	40,320	39,880	40,980	2.25	2.37	2.30
Wild (ME) ⁴						
Boysenberries ²	1,710	1,610	1,590	2.63	1.87	1.47
Loganberries (OR) ²	80	70	60	2.88	0.79	2.17
Raspberries ²						
Black (OR)	1,150	1,200	1,100	1.67	1.59	1.24
Red	12,400	12,200	12,000	3.46	3.73	3.58
All (CA)	2,000	2,300	2,400	5.65	5.40	5.95
Cherries, Sweet	61,450	68,270	73,220	3.36	3.37	2.46
Cherries, Tart	39,880	38,540	36,900	3.62	4.80	0.85
Cranberries	36,600	34,200	36,400	7.81	7.79	7.75
Dates (CA)	4,800	4,500	4,300	3.63	4.38	4.53
Figs (CA)	15,400	14,000	12,900	3.63	2.86	3.80
Grapes	946,450	930,420	953,850	8.12	7.06	7.49
Guavas (HI) ^{1 2}	680	610		11.70	12.60	
Kiwifruit (CA)	5,300	4,900	4,500	6.42	5.27	5.58
Nectarines (CA)	35,500	36,500	36,500	7.52	7.53	8.19
Olives (CA)	36,000	36,000	36,000	1.47	3.72	2.75
Papayas (HI) ²	1,650	1,950	1,700	16.50	14.10	13.40
Peaches	155,380	151,650	153,420	8.30	8.00	8.40
Pears	66,060	64,030	63,515	14.60	15.60	14.40
Pineapples (HI) ⁵	20,700	20,100	19,100			
Plums (CA)	38,000	37,000	36,000	5.18	5.68	5.56
Prunes (CA)	86,000	86,000	73,000	7.92	4.88	6.49
Prunes & Plums ⁶	4,110	4,210	4,110	5.82	5.04	3.86
Strawberries ²	47,650	46,000	47,600	20.00	18.00	20.70
Total	2,182,170	2,143,900	2,081,755			
Tree Nuts						
Almonds (CA) ⁷	500,000	525,000	530,000	1.15	1.28	1.62
Hazelnuts	28,650	28,100	27,800	0.79	1.76	0.65
Macadamias (HI)	17,700	17,800	17,800	1.41	1.58	1.46
Pecans ⁴						
Pistachios	74,600	78,000	83,000	1.63	1.03	1.80
Walnuts (CA)	193,000	196,000	200,000	1.24	1.56	1.41
Total	813,950	844,900	858,600			

¹ Estimates for 2002 will be published on May 12, 2003.

² Harvested acreage. Yield based on utilized production.

³ Cultivated.

⁴ Bearing acreage and yield not calculated.

⁵ Acreage is total acres in crop, not harvested acreage. Yield is not estimated.

⁶ ID, MI, OR, and WA.

⁷ Yield based on in-shell basis. Shelling ratios are 2000 - 0.613; 2001 - 0.618; 2002 - 0.618.

**Noncitrus Fruits and Nuts: Total and Utilized Production
by Crop, United States, 2000-2002**

Crop	Total Production			Utilized Production		
	2000	2001	2002	2000	2001	2002
	<i>1,000 Tons Fresh Equivalent</i>	<i>1,000 Tons Fresh Equivalent</i>	<i>1,000 Tons Fresh Equivalent</i>	<i>1,000 Tons Fresh Equivalent</i>	<i>1,000 Tons Fresh Equivalent</i>	<i>1,000 Tons Fresh Equivalent</i>
Noncitrus Fruits						
Apples	5,291.9	4,714.4	4,296.1	5,161.1	4,607.2	4,237.1
Apricots	96.9	82.5	90.1	87.8	75.4	80.1
Avocados ¹	239.3	221.3		239.3	221.3	
Bananas (HI) ²				14.5	14.0	9.5
Blackberries (OR) ³	22.5	21.8	21.9	22.5	20.8	21.1
Blueberries						
Cultivated	92.7	96.6	95.9	90.8	94.4	94.3
Wild (ME)	55.5	37.6	31.2	55.5	37.6	31.2
Boysenberries	4.5	3.0	2.4	4.5	3.0	2.3
Loganberries (OR)	0.2	0.1	0.1	0.2	0.1	0.1
Raspberries						
Black (OR)	1.9	2.0	1.4	1.9	1.9	1.4
Red	43.3	46.0	42.9	42.9	45.5	42.9
All (CA)	11.3	12.4	14.3	11.3	12.4	14.3
Cherries, Sweet	206.5	230.4	180.2	204.0	219.6	176.2
Cherries, Tart	144.3	185.0	31.3	140.7	154.0	31.1
Cranberries	285.6	266.5	282.1	279.0	239.2	281.8
Dates (CA)	17.4	19.7	19.5	17.4	19.7	19.5
Figs (CA)	55.9	40.1	49.0	55.9	40.1	49.0
Grapes	7,688.0	6,569.6	7,144.0	7,687.3	6,568.4	7,141.9
Guavas (HI) ^{1 2}				8.0	7.7	
Kiwifruit (CA)	34.0	25.8	25.1	30.5	23.0	22.3
Nectarines (CA)	267.0	275.0	299.0	267.0	275.0	299.0
Olives (CA)	53.0	134.0	99.0	53.0	134.0	99.0
Papayas (HI) ²				27.3	27.5	22.8
Peaches	1,289.9	1,216.6	1,287.7	1,244.4	1,167.5	1,236.2
Pears	967.2	1,001.8	911.5	949.2	964.3	911.0
Pineapples (HI) ²				354.0	323.0	320.0
Plums (CA)	197.0	210.0	200.0	197.0	210.0	200.0
Prunes (CA)	681.1	420.0	474.0	625.1	378.0	447.0
Prunes & Plums ⁴	23.9	21.2	15.9	22.0	20.0	15.0
Strawberries ²				951.1	826.2	985.1
Total				18,845.2	16,730.8	16,791.2
	<i>1,000 Tons In-Shell Equivalent</i>	<i>1,000 Tons In-Shell Equivalent</i>	<i>1,000 Tons In-Shell Equivalent</i>	<i>1,000 Tons In-Shell Equivalent</i>	<i>1,000 Tons In-Shell Equivalent</i>	<i>1,000 Tons In-Shell Equivalent</i>
Tree Nuts ²						
Almonds (CA)				573.4	671.5	857.6
Hazelnuts				22.5	49.5	18.0
Macadamias (HI)				25.0	28.0	26.0
Pecans				104.9	169.3	89.2
Pistachios (CA)				121.5	80.5	150.0
Walnuts (CA)				239.0	305.0	282.0
Total				1,086.3	1,303.8	1,422.8

¹ Estimates for 2002 will be published on May 12, 2003.

² Only utilized production estimated.

³ Cultivated.

⁴ ID, MI, OR, and WA.

**Noncitrus Fruits and Nuts: Price and Value
by Crop, United States, 2000-2002**

Crop	Unit ¹	Price			Value of Utilized Production		
		2000	2001	2002	2000	2001	2002
		<i>Dollars</i>	<i>Dollars</i>	<i>Dollars</i>	<i>1,000 Dollars</i>	<i>1,000 Dollars</i>	<i>1,000 Dollars</i>
Noncitrus Fruits							
Apples	Lb	0.128	0.157	0.191	1,320,781	1,448,348	1,622,135
Apricots	Ton	369.00	353.00	354.00	32,346	26,598	28,326
Avocados ²	Ton	1,380.00	1,640.00		331,397	362,390	
Bananas (HI)	Lb	0.360	0.380	0.420	10,440	10,640	7,980
Blackberries (OR) ³	Lb	0.477	0.415	0.434	21,437	17,267	18,296
Blueberries							
Cultivated	Lb	0.972	0.867	1.030	176,571	163,763	193,787
Wild (ME)	Lb	0.403	0.305	0.256	44,732	22,945	15,920
Boysenberries	Lb	0.581	0.689	0.671	5,225	4,133	3,142
Loganberries (OR)	Lb	0.643	0.455	0.558	296	50	145
Raspberries							
Black (OR)	Lb	1.480	0.452	0.411	5,687	1,724	1,119
Red	Lb	0.392	0.505	0.529	33,600	45,940	45,359
All (CA)	Lb	1.900	1.660	1.400	42,940	41,168	40,005
Cherries							
Sweet	Ton	1,340.00	1,230.00	1,550.00	274,225	270,914	273,694
Tart	Lb	0.187	0.186	0.448	52,488	57,150	27,879
Cranberries	Bbl	18.10	23.10	27.40	100,851	110,342	154,255
Dates (CA)	Ton	1,230.00	1,320.00	1,580.00	21,402	26,004	30,810
Figs (CA)	Ton	272.00	370.00	345.00	15,226	14,849	16,907
Grapes ⁴	Ton	403.00	446.00	408.00	3,099,127	2,929,038	2,912,742
Guavas (HI) ⁵	Lb	0.129	0.141		2,051	2,157	
Kiwifruit (CA) ⁵	Ton	455.00	667.00		13,888	15,340	
Nectarines (CA)	Ton	398.00	464.00	383.00	106,256	127,642	114,517
Olives (CA)	Ton	656.00	672.00	592.00	34,743	90,096	58,562
Papayas (HI)	Lb	0.294	0.265	0.259	16,007	14,598	11,778
Peaches	Lb	0.194	0.211	0.205	481,716	493,298	507,089
Pears	Ton	264.00	282.00	326.00	250,273	271,788	297,410
Pineapples (HI)	Ton	287.00	298.00	314.00	101,530	96,337	100,616
Plums (CA)	Ton	442.00	306.00	386.00	87,115	64,362	77,200
Prunes (CA)	Ton	770.00	723.00	810.00	154,770	97,605	120,690
Prunes & Plums ⁶	Ton	239.00	273.00	285.00	5,247	5,459	4,271
Strawberries	Cwt	55.00	64.80	61.90	1,045,998	1,070,052	1,220,504
Total ⁷					7,888,365	7,901,997	8,284,559
Almonds (CA) (Shelled)	Lb	0.97	0.91	1.01	666,487	740,012	1,049,188
Hazelnuts	Ton	891.00	701.00	1,000.00	20,039	34,700	18,009
Macadamias (HI)	Lb	0.590	0.590	0.550	29,500	33,040	28,600
Pecans	Lb	1.140	0.594	0.949	238,768	201,101	169,299
Pistachios (CA)	Lb	1.01	1.01	1.11	245,430	162,610	333,000
Walnuts (CA) ⁵	Ton	1,240.00	1,120.00		296,360	341,600	
Total ⁷					1,496,584	1,513,063	1,913,936

¹ Ton refers to the 2,000 lb. short ton.

² Estimates for 2002 will be published on May 12, 2003.

³ Cultivated.

⁴ The 2002 price and value were derived by using 2002 prices except for CA and AZ grapes utilized for raisins where 2001 prices were used. The 2002 prices for CA and AZ grapes utilized for raisins are not available, but will be published July 8, 2003.

⁵ Estimates for 2002 will be published on July 8, 2003.

⁶ ID, MI, OR, and WA.

⁷ Includes estimated 2002 value of production for crops noted by footnotes 2 and 5. Used 2001 price to compute the 2002 value.

**Fruits and Nuts: Bearing Acreage,
United States, 2000-2002**

Year	Citrus Fruits ¹	Major Deciduous Fruits ²	Miscellaneous Noncitrus ³	Nuts ⁴	Total
	<i>Acres</i>	<i>Acres</i>	<i>Acres</i>	<i>Acres</i>	<i>Acres</i>
2000	1,089,900	1,882,910	299,260	813,950	4,086,020
2001	1,081,100	1,852,600	291,300	844,900	4,069,900
2002 ⁵	1,053,300	1,853,895	227,860	858,600	3,993,655

¹ Grapefruit, K-Early Citrus, lemons, limes, oranges, tangelos, tangerines, and Temples.

² Commercial apples, apricots, cherries, grapes, nectarines, peaches, pears, plums, and prunes.

³ Avocados, bananas, berries, cranberries, dates, figs, guavas, kiwifruit, olives, papayas, pineapples, and strawberries.

⁴ Almonds, hazelnuts, macadamia nuts, pistachios, and walnuts.

⁵ Preliminary. Avocados and guavas not included.

**Noncitrus Fruits: Production Utilization,
United States, 2000-2002 ¹**

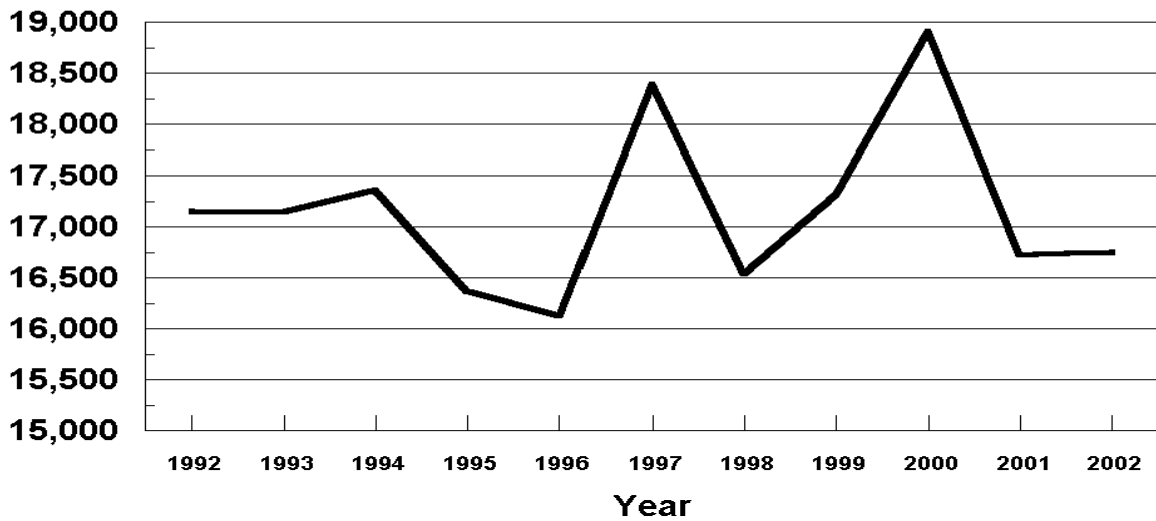
Year	Utilized Production	Fresh	Processed ²					
			Canned	Dried	Juice	Frozen	Wine	Other
	<i>1,000 Tons</i>	<i>1,000 Tons</i>	<i>1,000 Tons</i>	<i>1,000 Tons</i>	<i>1,000 Tons</i>	<i>1,000 Tons</i>	<i>1,000 Tons</i>	<i>1,000 Tons</i>
2000	18,845.2	7,002.1	1,814.5	3,023.0	1,712.6	691.5	4,129.8	192.7
2001	16,730.8	6,479.5	1,859.6	2,288.6	1,462.4	668.5	3,568.6	164.4
2002	16,791.2							

¹ 2002 is preliminary. Avocados and guavas not included. Fresh and processed tons will be published on July 8, 2003. Cranberry quantity included in utilized production, excluded from fresh and processed breakdown.

² Processed strawberries are included in frozen.

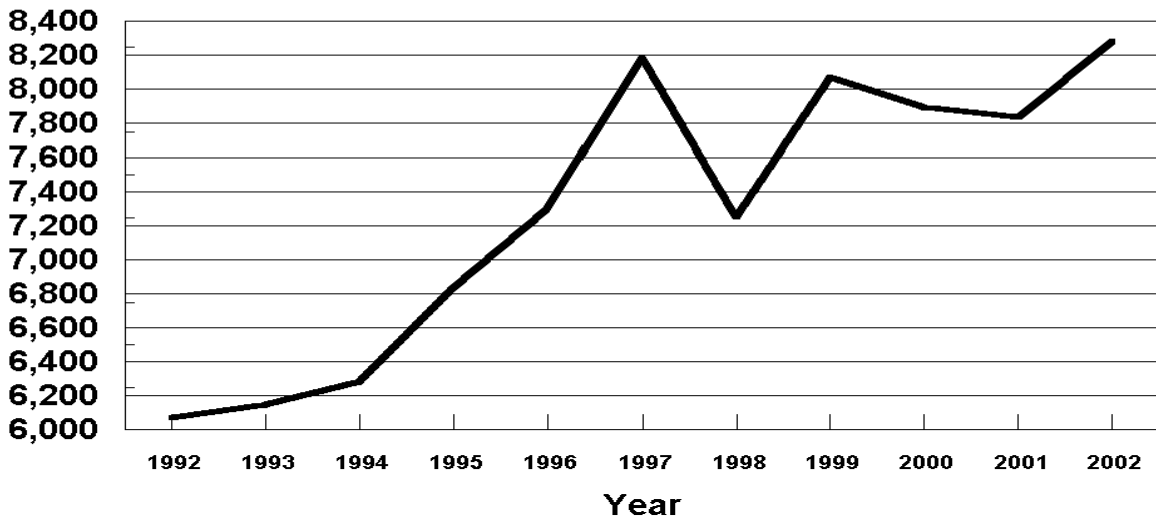
U.S. Noncitrus Fruits Utilized Production 1992 - 2002

1,000 Tons Fresh Equivalent



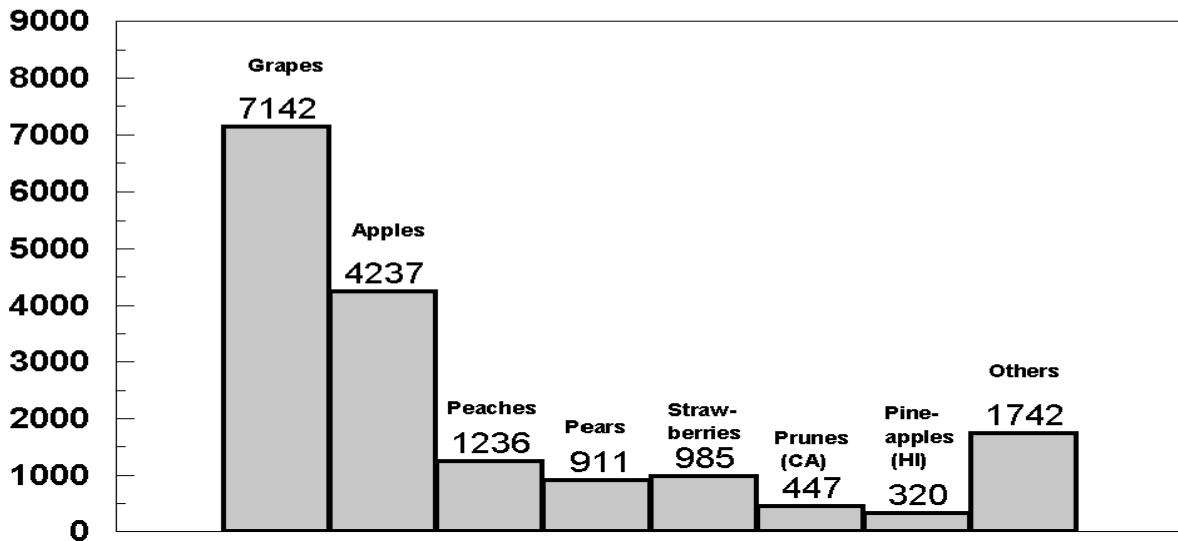
U.S. Noncitrus Fruits Value of Utilized Production 1992 - 2002

Million Dollars



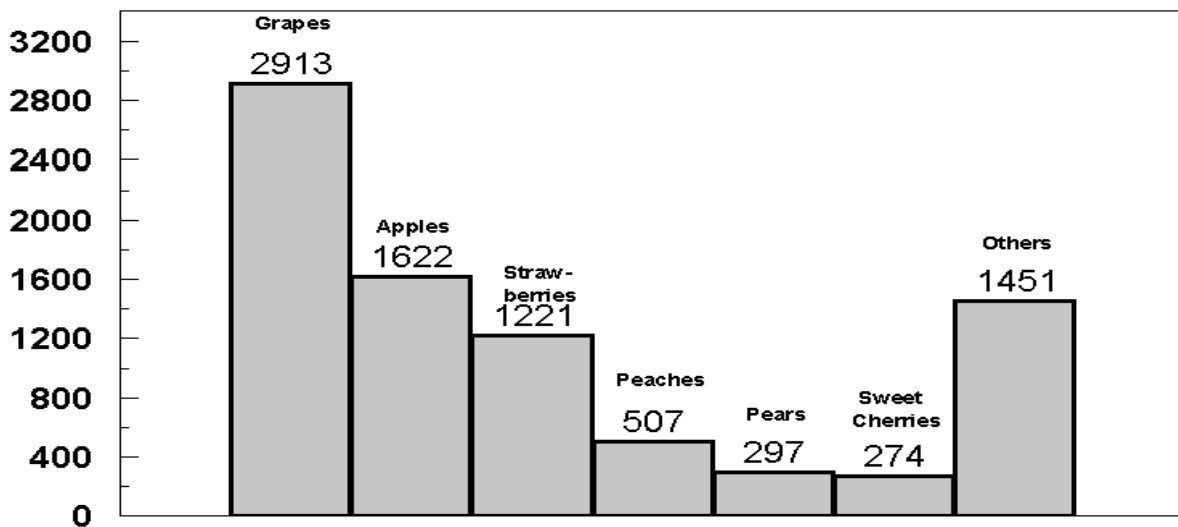
U.S. Noncitrus Fruits Utilized Production by Major Fruit, 2002

(000) Tons Fresh Equivalent



U.S. Noncitrus Fruits Value of Utilized Production by Major Fruit, 2002

Million Dollars



**Apples, Commercial: Bearing Acreage and Yield
by State and United States, 2000-2002**

State	Bearing Acreage			Yield per Acre ¹		
	2000	2001	2002	2000	2001	2002
	<i>Acres</i>	<i>Acres</i>	<i>Acres</i>	<i>Pounds</i>	<i>Pounds</i>	<i>Pounds</i>
AZ	3,900	2,000	2,000	24,400	2,700	13,100
AR	900	900	900	8,000	6,110	5,000
CA	31,000	29,000	26,000	18,400	17,900	16,200
CO	2,700	2,200	1,800	11,100	10,500	11,700
CT	2,400	2,300	2,300	8,540	8,910	5,220
GA	1,200	1,200	1,200	11,700	7,500	8,330
ID	5,400	5,400	5,400	25,900	14,800	14,800
IL	5,000	5,000	5,000	8,400	8,720	8,600
IN	4,000	4,000	4,000	11,300	13,300	10,000
IA	1,650	1,600	1,600	4,550	5,500	4,690
KS	450	400	400	6,670	10,000	8,750
KY	1,100	950	750	5,910	8,740	7,470
ME	4,000	3,500	3,500	9,750	13,400	14,000
MD	2,400	2,400	2,400	14,000	17,000	13,300
MA	5,000	4,700	4,700	10,000	8,300	6,600
MI	48,500	44,500	42,000	16,500	20,900	11,900
MN	2,900	2,900	2,800	7,590	8,280	8,930
MO	3,800	3,800	3,900	10,000	10,800	9,740
NH	2,800	2,700	2,600	12,100	11,100	9,230
NJ	3,000	2,800	2,600	16,700	19,600	13,500
NM	1,500	1,500	1,500	5,330	4,000	1,330
NY	40,000	41,000	41,000	24,900	24,400	15,900
NC	9,000	8,000	7,000	21,100	14,000	22,900
OH	7,500	7,400	7,500	13,700	11,600	10,300
OR	8,700	8,700	8,700	19,200	16,300	17,200
PA	23,000	23,000	23,000	20,700	20,900	17,000
RI	300	300	300	7,670	6,000	7,670
SC	1,700	1,600	1,500	11,800	3,750	6,000
TN	1,100	1,000	1,000	8,640	9,000	6,500
UT	2,800	2,800	2,800	17,500	10,700	2,860
VT	3,500	3,000	2,900	11,900	13,700	9,310
VA	15,000	15,000	15,000	21,300	20,700	16,700
WA	170,000	168,000	164,000	35,300	30,100	32,300
WV	7,000	6,500	6,500	12,100	16,200	14,600
WI	6,500	6,500	6,400	10,900	9,540	9,060
US	429,700	416,550	404,950	24,600	22,600	21,200

¹ Yield is based on total production, which includes unharvested production and fruit harvested but not sold due to market conditions.

**Apples, Commercial: Total and Utilized Production
by State and United States, 2000-2002**

State	Total Production			Utilized Production		
	2000	2001	2002	2000	2001	2002
	<i>Million Pounds</i>	<i>Million Pounds</i>	<i>Million Pounds</i>	<i>Million Pounds</i>	<i>Million Pounds</i>	<i>Million Pounds</i>
AZ	95.0	5.4	26.2	94.5	5.3	26.0
AR	7.2	5.5	4.5	3.4	4.3	3.4
CA	570.0	520.0	420.0	510.0	490.0	420.0
CO	30.0	23.0	21.0	27.0	23.0	20.0
CT	20.5	20.5	12.0	20.0	20.0	12.0
GA	14.0	9.0	10.0	13.0	8.9	9.9
ID	140.0	80.0	80.0	140.0	79.0	80.0
IL	42.0	43.6	43.0	36.0	40.6	35.3
IN	45.0	53.0	40.0	43.8	46.0	33.0
IA	7.5	8.8	7.5	7.5	7.7	4.2
KS	3.0	4.0	3.5	1.3	3.0	2.6
KY	6.5	8.3	5.6	5.6	7.0	4.0
ME	39.0	47.0	49.0	35.0	40.0	44.0
MD	33.7	40.8	32.0	33.0	40.7	31.9
MA	50.0	39.0	31.0	43.0	34.0	27.0
MI	800.0	930.0	500.0	795.0	900.0	500.0
MN	22.0	24.0	25.0	17.4	15.5	17.7
MO	38.0	41.0	38.0	34.0	41.0	36.0
NH	34.0	30.0	24.0	32.5	28.5	24.0
NJ	50.0	55.0	35.0	46.0	50.0	35.0
NM	8.0	6.0	2.0	8.0	6.0	1.8
NY	995.0	1,000.0	650.0	935.0	940.0	610.0
NC	190.0	112.0	160.0	145.0	107.0	150.0
OH	103.0	86.0	77.0	96.0	84.0	77.0
OR	167.0	142.0	150.0	162.0	141.0	150.0
PA	475.0	480.0	390.0	475.0	480.0	390.0
RI	2.3	1.8	2.3	2.2	1.4	2.0
SC	20.0	6.0	9.0	16.0	2.0	7.0
TN	9.5	9.0	6.5	8.5	6.5	5.4
UT	49.0	30.0	8.0	43.0	24.0	6.0
VT	41.5	41.0	27.0	38.5	38.0	24.0
VA	320.0	310.0	250.0	314.0	306.0	243.0
WA	6,000.0	5,050.0	5,300.0	6,000.0	5,050.0	5,300.0
WV	85.0	105.0	95.0	83.0	95.0	90.0
WI	71.0	62.0	58.0	58.0	49.0	52.0
US	10,583.7	9,428.7	8,592.1	10,322.2	9,214.4	8,474.2

**Apples, Commercial: Price and Value
by State and United States, 2000-2002**

State	Price per Pound			Value of Utilized Production		
	2000	2001	2002	2000	2001	2002
	<i>Dollars</i>	<i>Dollars</i>	<i>Dollars</i>	<i>1,000 Dollars</i>	<i>1,000 Dollars</i>	<i>1,000 Dollars</i>
AZ	0.074	0.066	0.173	6,971	350	4,506
AR	0.252	0.250	0.278	856	1,076	946
CA	0.164	0.148	0.172	83,430	72,385	72,345
CO	0.139	0.208	0.184	3,765	4,784	3,686
CT	0.302	0.322	0.385	6,040	6,445	4,620
GA	0.188	0.230	0.180	2,443	2,051	1,779
ID	0.107	0.141	0.197	15,040	11,115	15,760
IL	0.287	0.237	0.351	10,326	9,613	12,392
IN	0.245	0.185	0.235	10,734	8,521	7,757
IA	0.321	0.333	0.428	2,411	2,562	1,796
KS	0.268	0.283	0.301	349	850	783
KY	0.249	0.290	0.318	1,396	2,030	1,272
ME	0.218	0.290	0.338	7,622	11,605	14,880
MD	0.137	0.155	0.143	4,509	6,292	4,549
MA	0.320	0.324	0.363	13,755	11,013	9,810
MI	0.093	0.094	0.124	74,065	84,330	62,000
MN	0.432	0.475	0.509	7,523	7,363	9,008
MO	0.169	0.171	0.178	5,736	7,017	6,396
NH	0.236	0.250	0.304	7,655	7,133	7,290
NJ	0.134	0.162	0.138	6,183	8,117	4,830
NM	0.254	0.318	0.326	2,032	1,908	587
NY	0.117	0.119	0.164	109,075	111,860	99,955
NC	0.126	0.149	0.126	18,225	15,931	18,882
OH	0.227	0.236	0.259	21,746	19,831	19,924
OR	0.119	0.121	0.117	19,346	17,085	17,609
PA	0.114	0.096	0.103	54,337	46,080	40,125
RI	0.359	0.383	0.392	790	536	783
SC	0.129	0.187	0.130	2,064	373	913
TN	0.244	0.235	0.260	2,076	1,527	1,402
UT	0.118	0.172	0.183	5,060	4,136	1,100
VT	0.225	0.241	0.240	8,665	9,150	5,760
VA	0.103	0.106	0.121	32,228	32,541	29,300
WA	0.125	0.178	0.210	750,200	900,250	1,112,600
WV	0.095	0.085	0.096	7,883	8,120	8,625
WI	0.280	0.293	0.349	16,245	14,368	18,165
US	0.128	0.157	0.191	1,320,781	1,448,348	1,622,135

**Apples, Commercial: Fresh Market Utilization and Price
by State and United States, 2000-2002 ¹**

State	Fresh Market					
	Quantity			Price per Pound ²		
	2000	2001	2002	2000	2001	2002
	<i>Million Pounds</i>	<i>Million Pounds</i>	<i>Million Pounds</i>	<i>Dollars</i>	<i>Dollars</i>	<i>Dollars</i>
AZ	3.0	0.1		0.326	0.383	
CA	260.0	220.0		0.243	0.229	
CO	17.0	15.0		0.185	0.276	
CT	16.0	16.5		0.365	0.380	
ID	80.0	49.0		0.170	0.210	
IN	32.1	23.0		0.314	0.312	
KY	4.9	6.5		0.273	0.305	
ME	26.0	33.0		0.280	0.340	
MD	17.9	19.1		0.200	0.261	
MA	34.0	26.5		0.390	0.400	
MI	260.0	270.0		0.147	0.170	
MO	21.0	28.0		0.240	0.226	
NH	20.5	18.0		0.350	0.370	
NJ	20.0	23.0		0.224	0.276	
NM	8.0	6.0		0.254	0.318	
NY	460.0	420.0		0.170	0.184	
NC	61.0	45.0		0.201	0.250	
OH	79.0	70.0		0.263	0.271	
OR	122.0	94.0		0.143	0.154	
PA	127.0	120.0		0.247	0.201	
SC	5.5	1.1		0.251	0.264	
UT	28.0	16.0		0.170	0.250	
VT	28.5	29.0		0.290	0.300	
VA	99.0	88.0		0.167	0.210	
WA	4,300.0	3,700.0		0.163	0.232	
WV	15.0	15.0		0.215	0.200	
WI	49.0	41.0		0.324	0.340	
Oth Sts	72.4	77.0		0.352	0.319	
US	6,266.8	5,469.8		0.178	0.229	

¹ Estimates for 2002 will be published on July 8, 2003.

² Equivalent packinghouse door returns for CA, NY, and WA; price at first sale for all other States.

**Apples, Commercial: Value of Fresh Market Production
by State and United States, 2000-2002¹**

State	Fresh Market		
	Value of Production		
	2000	2001	2002
	<i>1,000 Dollars</i>	<i>1,000 Dollars</i>	<i>1,000 Dollars</i>
AZ	978	38	
CA	63,180	50,380	
CO	3,145	4,140	
CT	5,840	6,270	
ID	13,600	10,290	
IN	10,079	7,176	
KY	1,338	1,983	
ME	7,280	11,220	
MD	3,580	4,985	
MA	13,260	10,600	
MI	38,220	45,900	
MO	5,040	6,328	
NH	7,175	6,660	
NJ	4,480	6,348	
NM	2,032	1,908	
NY	78,200	77,280	
NC	12,261	11,250	
OH	20,777	18,970	
OR	17,446	14,476	
PA	31,369	24,120	
SC	1,381	290	
UT	4,760	4,000	
VT	8,265	8,700	
VA	16,533	18,480	
WA	700,900	858,400	
WV	3,225	3,000	
WI	15,876	13,940	
Oth Sts	25,457	24,597	
US	1,115,677	1,251,729	

¹ Estimates for 2002 will be published on July 8, 2003.

**Apples, Commercial: Processed Utilization and Price
by State and United States, 2000-2002 ¹**

State	Processed					
	Quantity			Price per Ton		
	2000	2001	2002	2000	2001	2002
	<i>Million Pounds</i>	<i>Million Pounds</i>	<i>Million Pounds</i>	<i>Dollars</i>	<i>Dollars</i>	<i>Dollars</i>
AZ	91.5	5.2		131.00	120.00	
CA	250.0	270.0		162.00	163.00	
CO	10.0	8.0		124.00	161.00	
CT	4.0	3.5		100.00	100.00	
ID	60.0	30.0		48.00	55.00	
IN	11.7	23.0		112.00	117.00	
KY	0.7	0.5		166.00	188.00	
ME	9.0	7.0		76.00	110.00	
MD	15.1	21.6		123.00	121.00	
MA	9.0	7.5		110.00	110.00	
MI	535.0	630.0		134.00	122.00	
MO	13.0	13.0		107.00	106.00	
NH	12.0	10.5		80.00	90.00	
NJ	26.0	27.0		131.00	131.00	
NY	475.0	520.0		130.00	133.00	
NC	84.0	62.0		142.00	151.00	
OH	17.0	14.0		114.00	123.00	
OR	40.0	47.0		95.00	111.00	
PA	348.0	360.0		132.00	122.00	
SC	10.5	0.9		130.00	184.00	
UT	15.0	8.0		40.00	34.00	
VT	10.0	9.0		80.00	100.00	
VA	215.0	218.0		146.00	129.00	
WA	1,700.0	1,350.0		58.00	62.00	
WV	68.0	80.0		137.00	128.00	
WI	9.0	8.0		82.00	107.00	
Oth Sts	16.9	10.9		156.00	180.00	
US	4,055.4	3,744.6		101.00	105.00	

¹ Estimates for 2002 will be published on July 8, 2003.

**Apples, Commercial: Value of Processed Production
by State and United States, 2000-2002 ¹**

State	Processed		
	Value of Production		
	2000	2001	2002
	<i>1,000 Dollars</i>	<i>1,000 Dollars</i>	<i>1,000 Dollars</i>
AZ	5,993	312	
CA	20,250	22,005	
CO	620	644	
CT	200	175	
ID	1,440	825	
IN	655	1,345	
KY	58	47	
ME	342	385	
MD	929	1,307	
MA	495	413	
MI	35,845	38,430	
MO	696	689	
NH	480	473	
NJ	1,703	1,769	
NY	30,875	34,580	
NC	5,964	4,681	
OH	969	861	
OR	1,900	2,609	
PA	22,968	21,960	
SC	683	83	
UT	300	136	
VT	400	450	
VA	15,695	14,061	
WA	49,300	41,850	
WV	4,658	5,120	
WI	369	428	
Oth Sts	1,317	981	
US	205,104	196,619	

¹ Estimates for 2002 will be published on July 8, 2003.

**Apples, Commercial: Processed Utilization, Use, and Price
by State and United States, 2000-2002¹**

Use and State	Processed Utilization ²					
	Quantity			Price per Ton		
	2000	2001	2002	2000	2001	2002
	<i>Million Pounds</i>	<i>Million Pounds</i>	<i>Million Pounds</i>	<i>Dollars</i>	<i>Dollars</i>	<i>Dollars</i>
Canned						
CA	6.0	17.0		152.00	146.00	
MI	190.0	220.0		155.00	145.00	
NY	246.0	320.0		158.00	152.00	
NC	53.0	37.0		168.00	179.00	
PA	221.0	226.0		158.00	142.00	
VA	165.0	168.0		164.00	139.00	
WA	200.0	155.0		87.00	88.00	
WV		58.0			142.00	
Oth Sts	102.7	57.4		155.00	140.00	
US	1,183.7	1,258.4		147.00	139.00	
Juice & Cider						
CA	225.0	218.0		156.00	164.00	
MI	215.0	280.0		95.00	85.00	
NY	189.0	155.0		88.00	86.00	
NC	19.0	24.0		83.00	107.00	
OR	24.0	24.0		73.00	52.00	
PA	118.0	125.0		86.00	87.00	
VA	46.0	48.0		86.00	94.00	
WA	1,220.0	910.0		49.00	50.00	
WV	21.0	20.0		85.00	88.00	
Oth Sts	257.8	141.7		93.90	92.80	
US	2,334.8	1,945.7		75.10	78.40	

See footnote(s) at end of table.

--continued

**Apples, Commercial: Processed Utilization, Use, and Price
by State and United States, 2000-2002¹ (continued)**

Use and State	Processed Utilization ²					
	Quantity			Price per Ton		
	2000	2001	2002	2000	2001	2002
	<i>Million Pounds</i>	<i>Million Pounds</i>	<i>Million Pounds</i>	<i>Dollars</i>	<i>Dollars</i>	<i>Dollars</i>
Frozen						
MI	120.0	115.0		170.00	165.00	
NY	26.0	30.0		168.00	150.00	
Oth Sts	49.9	103.5		92.70	110.00	
US	195.9	248.5		150.00	140.00	
Dried						
US	248.2	221.0		71.20	84.70	
Other ³						
MI	10.0	15.0		165.00	130.00	
NY	14.0	15.0		128.00	164.00	
Oth Sts	68.8	41.0		164.00	150.00	
US	92.8	71.0		159.00	153.00	

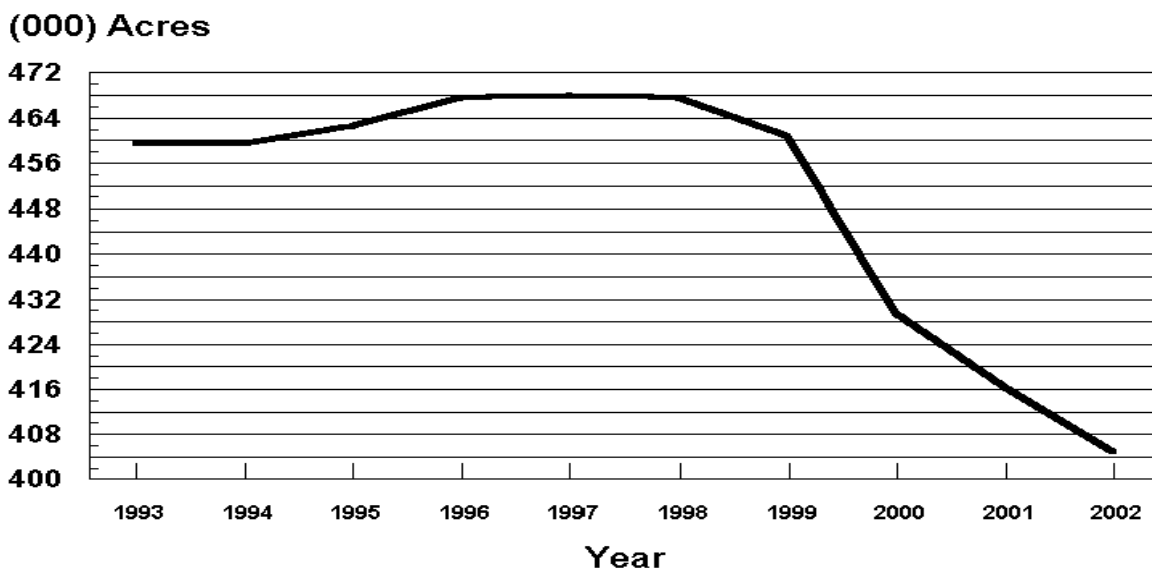
¹ Estimates for 2002 will be published on July 8, 2003.

² Missing data included in Other States to avoid disclosure of individual operations.

³ Includes vinegar, wine, and fresh slices for pie making.

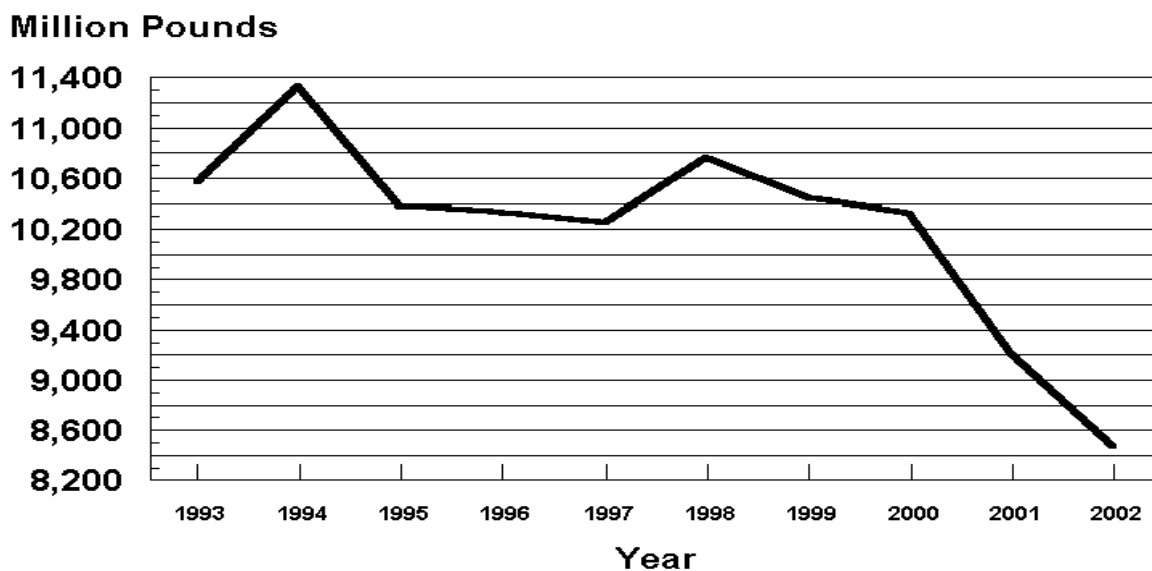
U. S. Apples

Bearing Acres 1993 - 2002



U. S. Apples

Utilized Production 1993 - 2002



**Miscellaneous Fruits: Bearing Acreage, Yield, Production, and Utilization
by State and United States, 2000-2002**

Crop, State, and Season	Bearing Acreage	Yield Per Acre ¹	Production		Utilization	
			Total	Utilized	Fresh	Processed
	<i>Acres</i>	<i>Tons</i>	<i>Tons</i>	<i>Tons</i>	<i>Tons</i>	<i>Tons</i>
Apricots ²						
CA						
2000	19,000	4.74	90,000	81,000	21,000	60,000
2001	18,000	4.28	77,000	70,000	14,000	56,000
2002	17,000	5.00	85,000	75,000	14,000	61,000
UT						
2000			400	260		
2001			260	230		
2002			140	130		
WA						
2000			6,500	6,500		
2001			5,200	5,200		
2002			5,000	5,000		
US						
2000	20,380	4.75	96,900	87,760	26,580	61,180
2001	19,430	4.24	82,460	75,430	18,230	57,200
2002	18,430	4.89	90,140	80,130	18,090	62,040
Avocados ³						
CA						
2000-01 ⁴	59,000	3.61	213,000	213,000	213,000	
2001-02	58,000	3.41	198,000	198,000	198,000	
2002-03						
FL						
2000-01	6,000	4.33	26,000	26,000	26,000	
2001-02	5,900	3.90	23,000	23,000	23,000	
2002-03						
HI						
2000-01	220	1.45	320	320	320	
2001-02	230	1.30	300	300	300	
2002-03						
US						
2000-01 ⁴	65,220	3.67	239,320	239,320	239,320	
2001-02	64,130	3.45	221,300	221,300	221,300	
2002-03						
Dates						
CA						
2000	4,800	3.63	17,400	17,400	17,400	
2001	4,500	4.38	19,700	19,700	19,700	
2002	4,300	4.53	19,500	19,500	19,500	

¹ Yield is based on total production.

² Missing data not published to avoid disclosure of individual operations.

³ Estimates for 2002-03 will be published on May 12, 2003.

⁴ Small quantities of processed avocados are included in fresh to avoid disclosure of individual operations.

**Miscellaneous Fruits: Price and Value by State
and United States, 2000-2002¹**

Crop, State, and Season	Price per Ton			Value of Production		
	Fresh	Processed	All	Fresh	Processed	Total
	<i>Dollars</i>	<i>Dollars</i>	<i>Dollars</i>	<i>1,000 Dollars</i>	<i>1,000 Dollars</i>	<i>1,000 Dollars</i>
Apricots ²						
CA						
2000	459.00	288.00	329.00	9,639	17,040	26,679
2001	551.00	260.00	319.00	7,714	14,616	22,330
2002	490.00	271.00	306.00	6,860	16,104	22,964
UT						
2000			612.00			159
2001			852.00			196
2002			708.00			92
WA						
2000			847.00			5,508
2001			783.00			4,072
2002			1,050.00			5,270
US						
2000	573.00	283.00	369.00	15,226	17,120	32,346
2001	650.00	257.00	353.00	11,849	14,749	26,598
2002	671.00	267.00	354.00	12,145	16,181	28,326
Avocados ³						
CA						
2000-01 ⁴	1,480.00		1,480.00	315,842		315,842
2001-02	1,750.00		1,750.00	346,500		346,500
2002-03						
FL						
2000-01	584.00		584.00	15,184		15,184
2001-02	676.00		676.00	15,548		15,548
2002-03						
HI						
2000-01	1,160.00		1,160.00	371		371
2001-02	1,140.00		1,140.00	342		342
2002-03						
US						
2000-01 ⁴	1,380.00		1,380.00	331,397		331,397
2001-02	1,640.00		1,640.00	362,390		362,390
2002-03						
Dates						
CA						
2000	1,230.00		1,230.00	21,402		21,402
2001	1,320.00		1,320.00	26,004		26,004
2002	1,580.00		1,580.00	30,810		30,810

¹ Missing data not published to avoid disclosure of individual operations.

² Apricot processed price excludes dried. Processing value includes dried.

³ Estimates for 2002-03 will be published on May 12, 2003.

⁴ Small quantities of processed avocados are included in fresh to avoid disclosure of individual operations.

**Miscellaneous Fruits: Bearing Acreage, Yield, Production, and Utilization
by State and United States, 2000-2002¹**

Crop, State, and Season	Bearing Acreage	Yield Per Acre ²	Production		Utilization	
			Total	Utilized	Fresh	Processed
	<i>Acres</i>	<i>Tons</i>	<i>Tons</i>	<i>Tons</i>	<i>Tons</i>	<i>Tons</i>
Figs ³						
CA						
2000	15,400	3.63	55,900	55,900	4,000	51,900
2001	14,000	2.86	40,100	40,100	2,000	38,100
2002	12,900	3.80	49,000	49,000	2,500	46,500
Kiwifruit						
CA						
2000	5,300	6.42	34,000	30,500	28,500	2,000
2001	4,900	5.27	25,800	23,000	22,200	800
2002	4,500	5.58	25,100	22,300	21,500	800
Nectarines						
CA						
2000	35,500	7.52	267,000	267,000	260,700	6,300
2001	36,500	7.53	275,000	275,000	265,400	9,600
2002 ⁴	36,500	8.19	299,000	299,000	299,000	
Olives						
CA						
2000	36,000	1.47	53,000	53,000	500	52,500
2001	36,000	3.72	134,000	134,000	500	133,500
2002	36,000	2.75	99,000	99,000	500	98,500
Plums						
CA						
2000	38,000	5.18	197,000	197,000		
2001	37,000	5.68	210,000	210,000		
2002	36,000	5.56	200,000	200,000		

¹ Missing data not published to avoid disclosure of individual operations.

² Yield is based on total production.

³ Small quantities of canned figs are included in fresh to avoid disclosure of individual operations.

⁴ Small quantities of processed nectarines are included in fresh to avoid disclosure of individual operations.

**Miscellaneous Fruits: Price and Value by State
and United States, 2000-2002¹**

Crop, State, and Season	Price per Ton			Value of Production		
	Fresh	Processed	All	Fresh	Processed	Total
	<i>Dollars</i>	<i>Dollars</i>	<i>Dollars</i>	<i>1,000 Dollars</i>	<i>1,000 Dollars</i>	<i>1,000 Dollars</i>
Figs						
CA						
2000			272.00			15,226
2001			370.00			14,849
2002			345.00			16,907
Kiwifruit ²						
CA						
2000			455.00			13,888
2001			667.00			15,340
2002						
Nectarines						
CA						
2000	407.00	24.00	398.00	106,105	151	106,256
2001	480.00	26.00	464.00	127,392	250	127,642
2002 ³	383.00		383.00	114,517		114,517
Olives						
CA						
2000	500.00	657.00	656.00	250	34,493	34,743
2001	500.00	673.00	672.00	250	89,846	90,096
2002	500.00	592.00	592.00	250	58,312	58,562
Plums						
CA						
2000			442.00			87,115
2001			306.00			64,362
2002			386.00			77,200

¹ Missing data not published to avoid disclosure of individual operations.

² Estimates for 2002 will be published on July 8, 2003.

³ Small quantities of processed nectarines are included in fresh to avoid disclosure of individual operations.

**Miscellaneous Fruits: Bearing Acreage, Yield, Production, and Utilization
by State and United States, 2000-2002¹**

Crop, State, and Season	Bearing Acreage	Yield Per Acre ²	Production		Utilization	
			Total	Utilized	Fresh	Processed
	<i>Acres</i>	<i>Tons</i>	<i>Tons</i>	<i>Tons</i>	<i>Tons</i>	<i>Tons</i>
Prunes & Plums						
ID						
2000			3,500	3,350		
2001			3,000	3,000		
2002			2,000	1,950		
MI						
2000	800	4.50	3,600	3,300	1,250	2,050
2001	800	4.50	3,600	3,600	1,800	1,800
2002	800	0.31	250	240	60	180
OR						
2000	2,000	5.00	10,000	8,500		
2001	1,900	4.74	9,000	7,800		
2002	1,800	4.44	8,000	7,200		
WA						
2000			6,800	6,800		
2001			5,600	5,600		
2002			5,600	5,600		
4-State Total						
2000	4,110	5.82	23,900	21,950	9,400	12,550
2001	4,210	5.04	21,200	20,000	11,000	9,000
2002	4,110	3.86	15,850	14,990	6,360	8,630
Prunes (Dried Basis)						
CA						
2000	86,000	2.55	219,000	201,000		201,000
2001	86,000	1.74	150,000	135,000		135,000
2002	73,000	2.16	158,000	149,000		149,000

¹ Missing data not published to avoid disclosure of individual operations.

² Yield is based on total production.

**Miscellaneous Fruits: Price and Value by State
and United States, 2000-2002¹**

Crop, State, and Season	Price per Ton			Value of Production		
	Fresh	Processed	All	Fresh	Processed	Total
	<i>Dollars</i>	<i>Dollars</i>	<i>Dollars</i>	<i>1,000 Dollars</i>	<i>1,000 Dollars</i>	<i>1,000 Dollars</i>
Prunes & Plums						
ID						
2000			397.00			1,330
2001			582.00			1,745
2002			536.00			1,045
MI						
2000	270.00	255.00	261.00	338	523	861
2001	442.00	274.00	358.00	796	493	1,289
2002	600.00	278.00	358.00	36	50	86
OR						
2000			192.00			1,633
2001			166.00			1,298
2002			251.00			1,808
WA						
2000			209.00			1,423
2001			201.00			1,127
2002			238.00			1,332
4-State Total						
2000	321.00	178.00	239.00	3,014	2,233	5,247
2001	345.00	185.00	273.00	3,790	1,669	5,459
2002	396.00	203.00	285.00	2,519	1,752	4,271
Prunes (Dried Basis)						
CA						
2000		770.00	770.00		154,770	154,770
2001		723.00	723.00		97,605	97,605
2002		810.00	810.00		120,690	120,690

¹ Missing data not published to avoid disclosure of individual operations.

**Miscellaneous Fruits: Processed Utilization, Use, and Price
by State and United States, 2000-2002¹**

Crop, Use, and State	Processed Utilization					
	Quantity			Price per Ton		
	2000	2001	2002	2000	2001	2002
	<i>Tons</i>	<i>Tons</i>	<i>Tons</i>	<i>Dollars</i>	<i>Dollars</i>	<i>Dollars</i>
Apricots						
Canned						
CA	32,000	31,000	30,500	322.00	292.00	286.00
Juice						
CA	10,000	9,000	7,000	169.00	102.00	158.00
Frozen						
CA	10,000	9,000	10,500	298.00	308.00	299.00
Dried (Fresh Basis)						
CA	8,000	6,000	8,000	260.00	268.00	223.00
Figs						
Dried (Fresh Basis)						
CA	51,900	38,100	46,500	224.00	311.00	300.00
Olives						
Canned						
CA	41,400	109,700	82,800	769.00	770.00	657.00
Crushed for Oil						
CA	3,000	3,000	2,000	300.00	300.00	240.00
Limited						
CA	5,100	15,300	9,900	333.00	287.00	335.00
Undersized						
CA	3,000	5,500	3,800	11.00	6.00	23.00
Prunes & Plums						
Canned						
4-State Total	5,400	4,470	3,540	182.00	190.00	175.00
Frozen						
4-State Total	1,500	1,280	1,160	287.00	241.00	147.00
Dried & Other						
4-State Total	5,650	3,250	3,930	145.00	157.00	245.00

¹ Missing data not published to avoid disclosure of individual operations.

**Olives: Variety and Total Production, California
2000-2002**

Variety	Total Production		
	2000	2001	2002 ¹
	<i>Tons</i>	<i>Tons</i>	<i>Tons</i>
Ascolano	6,300	4,200	
Manzanillo	32,200	105,900	66,300
Mission	1,600	1,400	
Servillano	8,800	16,700	22,800
All Other ²	4,100	5,800	9,900
Total	53,000	134,000	99,000

¹ Ascolano and Mission varieties are included in All Other.

² Includes production for varieties that were or will be used for canned, oil, and other specialty products.

California Dry Fruits: Production, Use, and Price, 2000-2002

Crop	Quantity			Price per Ton		
	2000	2001	2002	2000	2001	2002
	<i>Tons</i>	<i>Tons</i>	<i>Tons</i>	<i>Dollars</i>	<i>Dollars</i>	<i>Dollars</i>
Fresh Basis						
Apricots	8,000	6,000	8,000	260.00	268.00	223.00
Figs	51,900	38,100	46,500	224.00	311.00	300.00
Grapes ¹						
Raisin	2,146,000	1,707,000	1,784,000	128.00	132.00	
Table	41,000	25,000	24,000	157.00	149.00	
Peaches						
Freestone	12,600	14,600	14,200	78.00	51.00	49.00
Pears						
Bartlett	4,000	3,000	2,000	136.00	202.00	202.00
Prunes	625,100	378,000	447,000	248.00	258.00	270.00
Dried Basis						
Apricots ²	1,120	820	1,120	1,860.00	1,960.00	1,590.00
Figs ³						
Standard	15,400	11,400	14,000	747.00	1,030.00	989.00
Sub-Std.	1,900	1,300	1,500	60.00	60.00	60.00
Grapes ¹						
Raisin ^{4 5}	484,500	411,300	396,500	569.00	548.00	
Table ⁶	9,200	5,800	5,300	700.00	644.00	
Peaches ⁷						
Freestone	1,350	1,450	1,525	728.00	514.00	456.00
Pears ⁸						
Bartlett	600	500	310	909.00	1,210.00	1,300.00
Prunes ⁹	201,000	135,000	149,000	770.00	723.00	810.00

¹ The 2002 prices for California grapes utilized for raisins are not available. Prices for crop year 2002 will be published on July 8, 2003.

² Dried basis 1 ton of apricots equivalent to 7.14 for 2000, 7.32 tons for 2001, and 7.14 tons for 2002.

³ Dried basis 1 ton of all figs equivalent to 3.00 tons for 2000, 2001, and 2002.

⁴ Includes substandard raisins diverted to other uses.

⁵ Dried basis 1 ton of raisins equivalent to 4.43 tons for 2000, 4.15 tons for 2001, and 4.50 tons for 2002.

⁶ Dried basis 1 ton of table type raisins equivalent to 4.46 tons for 2000, 4.31 tons for 2001, and 4.53 tons for 2002.

⁷ Dried basis 1 ton of Freestone peaches equivalent to 9.33 tons for 2000, 10.07 tons for 2001, and 9.31 tons for 2002.

⁸ Dried basis 1 ton of Bartlett pears equivalent to 6.67 tons for 2000, 6.00 tons for 2001, and 6.45 tons for 2002.

⁹ Dried basis 1 ton of dried prunes equivalent to 3.11 tons for 2000, 2.80 tons for 2001, and 3.00 tons for 2002.

**Strawberries: Area Planted and Harvested, Yield, and Production
by Season, State, and United States, 2000-2002**

Season and State	Area Planted			Area Harvested		
	2000	2001	2002	2000	2001	2002
	<i>Acres</i>	<i>Acres</i>	<i>Acres</i>	<i>Acres</i>	<i>Acres</i>	<i>Acres</i>
Winter						
FL	6,300	6,500	6,900	6,300	6,500	6,900
Spring						
CA	27,600	26,400	28,500	27,600	26,400	28,500
MI	1,200	1,000	1,000	1,200	900	900
NJ ¹	500	500		450	400	
NY	1,700	1,700	1,700	1,600	1,600	1,400
NC	1,800	1,800	1,900	1,700	1,700	1,800
OH	1,200	1,200	1,300	1,000	1,000	1,100
OR	4,100	3,800	3,500	3,500	3,100	3,000
PA	1,300	1,300	1,300	1,300	1,300	1,300
VA ¹	500	500		500	500	
WA	1,500	1,600	1,800	1,500	1,600	1,800
WI	1,200	1,100	1,000	1,000	1,000	900
Total	42,600	40,900	42,000	41,350	39,500	40,700
US	48,900	47,400	48,900	47,650	46,000	47,600
	Yield per Acre			Production		
	2000	2001	2002	2000	2001	2002
	<i>Cwt</i>	<i>Cwt</i>	<i>Cwt</i>	<i>1,000 Cwt</i>	<i>1,000 Cwt</i>	<i>1,000 Cwt</i>
Winter						
FL	350	260	255	2,205	1,690	1,760
Spring						
CA	570	520	595	15,732	13,728	16,957
MI	69	56	47	83	50	42
NJ ¹	36	45		16	18	
NY	41	38	45	65	60	63
NC	135	115	125	231	196	225
OH	44	46	35	44	46	39
OR	100	130	115	353	402	338
PA	50	66	56	65	86	73
VA ¹	110	82		54	41	
WA	86	100	90	129	160	162
WI	44	46	48	44	46	43
Total	407	376	441	16,816	14,833	17,942
US	399	359	414	19,021	16,523	19,702

¹ Estimates discontinued in 2002.

**Strawberries: Price and Value by Season, State,
and United States, 2000-2002**

Season and State	Price per Cwt			Value of Production		
	2000	2001	2002	2000	2001	2002
	<i>Dollars</i>	<i>Dollars</i>	<i>Dollars</i>	<i>1,000 Dollars</i>	<i>1,000 Dollars</i>	<i>1,000 Dollars</i>
Winter						
FL	76.00	99.00	87.20	167,580	167,310	153,472
Spring						
CA	50.90	60.20	58.40	800,334	826,478	990,583
MI	74.00	93.60	90.60	6,145	4,682	3,804
NJ ¹	94.00	72.20		1,504	1,300	
NY	105.00	118.00	140.00	6,825	7,080	8,820
NC	75.00	85.00	85.00	17,325	16,660	19,125
OH	108.00	105.00	124.00	4,752	4,830	4,836
OR	49.50	37.70	49.20	17,491	15,164	16,613
PA	108.00	110.00	137.00	7,020	9,460	10,001
VA ¹	105.00	124.00		5,670	5,084	
WA	52.50	43.40	51.00	6,776	6,944	8,262
WI	104.00	110.00	116.00	4,576	5,060	4,988
Total	52.20	60.90	59.50	878,418	902,742	1,067,032
US	55.00	64.80	61.90	1,045,998	1,070,052	1,220,504

¹ Estimates discontinued in 2002.

**Strawberries: Fresh Market and Processed Production by
Season, State, and United States, 2000-2002**

Utilization, Season, and State	Production		
	2000 <i>1,000 Cwt</i>	2001 <i>1,000 Cwt</i>	2002 <i>1,000 Cwt</i>
Fresh			
Winter			
FL	2,205	1,690	1,760
Spring			
CA	11,518	10,338	12,642
MI	66	44	36
NJ ¹	16	18	
NY	65	60	63
NC	231	196	225
OH	44	46	39
OR	18	22	23
PA	65	86	73
VA ¹	54	41	
WA	20	24	18
WI	44	46	43
Total	12,141	10,921	13,162
US	14,346	12,611	14,922
Processed			
Spring			
CA	4,214	3,390	4,315
MI	17	6	6
OR	335	380	315
WA	109	136	144
US	4,675	3,912	4,780

¹ Estimates discontinued in 2002.

**Strawberries: Fresh Market and Processed Price and Value
by Season, State, and United States, 2000-2002**

Utilization, Season, and State	Price per Cwt			Value of Production		
	2000	2001	2002	2000	2001	2002
	<i>Dollars</i>	<i>Dollars</i>	<i>Dollars</i>	<i>1,000 Dollars</i>	<i>1,000 Dollars</i>	<i>1,000 Dollars</i>
Fresh						
Winter						
FL	76.00	99.00	87.20	167,580	167,310	153,472
Spring						
CA	61.40	70.60	67.40	707,205	729,863	852,071
MI	81.00	100.00	98.00	5,346	4,400	3,528
NJ ¹	94.00	72.20		1,504	1,300	
NY	105.00	118.00	140.00	6,825	7,080	8,820
NC	75.00	85.00	85.00	17,325	16,660	19,125
OH	108.00	105.00	124.00	4,752	4,830	4,836
OR	97.00	102.00	106.00	1,746	2,244	2,438
PA	108.00	110.00	137.00	7,020	9,460	10,001
VA ¹	105.00	124.00		5,670	5,084	
WA	99.00	108.00	107.00	1,980	2,592	1,926
WI	104.00	110.00	116.00	4,576	5,060	4,988
Total	62.90	72.20	69.00	763,949	788,573	907,733
US	64.90	75.80	71.10	931,529	955,883	1,061,205
Processed						
Spring						
CA	22.10	28.50	32.10	93,129	96,615	138,512
MI	47.00	47.00	46.00	799	282	276
OR	47.00	34.00	45.00	15,745	12,920	14,175
WA	44.00	32.00	44.00	4,796	4,352	6,336
US	24.50	29.20	33.30	114,469	114,169	159,299

¹ Estimates discontinued in 2002.

**Berries: Harvested Acreage, Yield, Production, and Utilization
by Crop, State, and United States, 2000-2002**

Crop, State, and Year	Area Harvested	Yield Per Acre ¹	Production		Utilization	
			Total	Utilized	Fresh	Processed
	<i>Acres</i>	<i>Pounds</i>	<i>1,000 Pounds</i>	<i>1,000 Pounds</i>	<i>1,000 Pounds</i>	<i>1,000 Pounds</i>
Cultivated Blueberries						
AL						
2000 ²	300	1,500	710	450	450	
2001 ²	310	1,710	800	530	530	
2002 ²	280	1,430	620	400	400	
AR						
2000 ²	400	2,650	1,320	1,060	1,060	
2001 ²	400	2,030	1,060	810	810	
2002 ²	450	2,960	1,420	1,330	1,330	
FL						
2000	1,400	2,000	3,300	2,800	2,300	500
2001	1,500	2,070	3,400	3,100	2,800	300
2002 ²	1,600	1,810	3,100	2,900	2,900	
GA						
2000	4,600	4,130	20,000	19,000	6,000	13,000
2001	4,600	3,700	18,000	17,000	6,000	11,000
2002	4,500	3,780	17,000	17,000	8,000	9,000
IN						
2000	720	3,470	2,600	2,500	1,500	1,000
2001	670	2,240	1,600	1,500	900	600
2002	650	4,620	3,100	3,000	1,500	1,500
MI						
2000	16,700	3,710	62,000	62,000	19,000	43,000
2001	16,800	4,170	70,000	70,000	21,000	49,000
2002	16,900	3,790	64,000	64,000	22,000	42,000
NJ						
2000	7,500	4,530	35,000	34,000	24,000	10,000
2001	7,400	5,000	38,000	37,000	29,000	8,000
2002	7,400	5,680	43,000	42,000	37,000	5,000
NY						
2000	700	2,710	2,000	1,900	1,800	100
2001	700	2,140	1,700	1,500	1,450	50
2002	700	2,710	2,100	1,900	1,800	100
NC						
2000	3,600	4,860	18,000	17,500	10,500	7,000
2001	2,700	5,000	13,800	13,500	10,500	3,000
2002	3,700	4,190	17,000	15,500	11,300	4,200
OR						
2000	2,700	10,400	28,000	28,000	9,000	19,000
2001	2,800	10,300	29,300	28,900	10,900	18,000
2002	2,800	9,820	27,500	27,500	11,000	16,500
WA						
2000	1,700	7,300	12,410	12,410	2,300	10,110
2001	2,000	7,500	15,550	15,000	4,200	10,800
2002	2,000	6,500	13,000	13,000	2,200	10,800
US						
2000	40,320	4,500	185,340	181,620	77,820	103,800
2001	39,880	4,740	193,210	188,840	87,990	100,850
2002	40,980	4,600	191,840	188,530	99,380	89,150
Wild Blueberries						
ME						
2000			110,990	110,990	420	110,570
2001			75,200	75,200	350	74,850
2002			62,300	62,300	300	62,000

¹ Yield is based on utilized production.

² Small quantities of processed blueberries are included in fresh to avoid disclosure of individual operations.

**Berries: Price and Value by Crop, State,
and United States, 2000-2002**

Crop, State and Year	Price per Pound			Value of Production		
	Fresh	Processed	All	Fresh	Processed	Total
	<i>Dollars</i>	<i>Dollars</i>	<i>Dollars</i>	<i>1,000 Dollars</i>	<i>1,000 Dollars</i>	<i>1,000 Dollars</i>
Cultivated Blueberries						
AL						
2000 ¹	0.953		0.953	429		429
2001 ¹	0.917		0.917	486		486
2002 ¹	0.943		0.943	377		377
AR						
2000 ¹	1.190		1.190	1,262		1,262
2001 ¹	1.450		1.450	1,171		1,171
2002 ¹	1.150		1.150	1,533		1,533
FL						
2000	5.000	0.850	4.260	11,500	425	11,925
2001	4.300	0.650	3.950	12,040	195	12,235
2002 ¹	6.400		6.400	18,560		18,560
GA						
2000	1.450	0.750	0.971	8,700	9,750	18,450
2001	1.250	0.550	0.797	7,500	6,050	13,550
2002	1.570	0.540	1.020	12,560	4,860	17,420
IN						
2000	1.110	0.800	0.986	1,665	800	2,465
2001	1.300	0.750	1.080	1,170	450	1,620
2002	1.220	0.620	0.920	1,830	930	2,760
MI						
2000	1.250	0.730	0.889	23,750	31,390	55,140
2001	1.090	0.550	0.712	22,890	26,950	49,840
2002	1.210	0.610	0.816	26,620	25,620	52,240
NJ						
2000	1.150	0.850	1.060	27,600	8,500	36,100
2001	1.090	0.640	0.990	31,610	5,120	36,730
2002	1.170	0.700	1.110	43,290	3,500	46,790
NY						
2000	0.970	0.700	0.956	1,746	70	1,816
2001	1.200	0.500	1.180	1,740	25	1,765
2002	1.380	0.660	1.340	2,484	66	2,550
NC						
2000	1.300	0.640	1.040	13,650	4,480	18,130
2001	1.640	0.560	1.400	17,220	1,680	18,900
2002	1.760	0.630	1.450	19,888	2,646	22,534
OR						
2000	0.910	0.700	0.768	8,190	13,300	21,490
2001	0.820	0.380	0.546	8,938	6,840	15,778
2002	1.000	0.550	0.730	11,000	9,075	20,075
WA						
2000	1.170	0.660	0.755	2,691	6,673	9,364
2001	1.420	0.530	0.779	5,964	5,724	11,688
2002	1.220	0.580	0.688	2,684	6,264	8,948
US						
2000	1.300	0.727	0.972	101,101	75,470	176,571
2001	1.260	0.527	0.867	110,638	53,125	163,763
2002	1.420	0.595	1.030	140,769	53,018	193,787
Wild Blueberries						
ME						
2000	1.200	0.400	0.403	504	44,228	44,732
2001	1.400	0.300	0.305	490	22,455	22,945
2002	1.400	0.250	0.256	420	15,500	15,920

¹ Small quantities of processed blueberries are included in fresh to avoid disclosure of individual operations.

**Berries: Harvested Acreage, Yield, Production, and Utilization
by Crop, State, and United States, 2000-2002**

Crop, State, and Year	Area Harvested	Yield Per Acre ¹	Production		Utilization	
			Total	Utilized	Fresh	Processed
	<i>Acres</i>	<i>Pounds</i>	<i>1,000 Pounds</i>	<i>1,000 Pounds</i>	<i>1,000 Pounds</i>	<i>1,000 Pounds</i>
Boysenberries						
CA ²						
2000	260	9,620	2,500	2,500		
2001	230	8,260	1,900	1,900		
2002	210	8,000	1,680	1,680		
OR						
2000	1,450	4,480	6,500	6,500	300	6,200
2001	1,380	2,970	4,170	4,100	300	3,800
2002	1,380	2,170	3,030	3,000	200	2,800
US ²						
2000	1,710	5,260	9,000	9,000		
2001	1,610	3,730	6,070	6,000		
2002	1,590	2,940	4,710	4,680		
Loganberries						
OR						
2000	80	5,750	460	460	80	380
2001	70	1,570	120	110	10	100
2002	60	4,330	270	260	30	230
Black Raspberries						
OR						
2000	1,150	3,330	3,830	3,830	30	3,800
2001	1,200	3,180	3,950	3,810	10	3,800
2002	1,100	2,470	2,820	2,720	20	2,700
Red Raspberries						
OR						
2000	2,900	5,000	14,500	14,500	1,300	13,200
2001	2,700	5,890	15,900	15,900	1,300	14,600
2002	2,500	4,680	11,700	11,700	1,700	10,000
WA						
2000	9,500	7,500	72,150	71,250	4,000	67,250
2001	9,500	7,900	76,050	75,050	3,550	71,500
2002	9,500	7,800	74,100	74,100	5,200	68,900
US						
2000	12,400	6,920	86,650	85,750	5,300	80,450
2001	12,200	7,450	91,950	90,950	4,850	86,100
2002	12,000	7,150	85,800	85,800	6,900	78,900
All Raspberries						
CA ²						
2000	2,000	11,300	22,600	22,600		
2001	2,300	10,800	24,800	24,800		
2002	2,400	11,900	28,600	28,600		

¹ Yield is based on utilized production.

² No breakdown of utilization available.

**Berries: Price and Value by Crop, State,
and United States, 2000-2002**

Crop, State, and Year	Price per Pound			Value of Production		
	Fresh	Processed	All	Fresh	Processed	Total
	<i>Dollars</i>	<i>Dollars</i>	<i>Dollars</i>	<i>1,000 Dollars</i>	<i>1,000 Dollars</i>	<i>1,000 Dollars</i>
Boysenberries						
CA ¹						
2000			0.824			2,061
2001			0.816			1,550
2002			0.817			1,372
OR						
2000	1.350	0.445	0.487	405	2,759	3,164
2001	1.390	0.570	0.630	417	2,166	2,583
2002	1.290	0.540	0.590	258	1,512	1,770
US ¹						
2000			0.581			5,225
2001			0.689			4,133
2002			0.671			3,142
Loganberries						
OR						
2000	1.560	0.450	0.643	125	171	296
2001	1.540	0.350	0.455	15	35	50
2002	1.000	0.500	0.558	30	115	145
Black Raspberries						
OR						
2000	2.100	1.480	1.480	63	5,624	5,687
2001	1.380	0.450	0.452	14	1,710	1,724
2002	1.930	0.400	0.411	39	1,080	1,119
Red Raspberries						
OR						
2000	1.160	0.470	0.532	1,508	6,204	7,712
2001	1.220	0.450	0.513	1,586	6,570	8,156
2002	1.220	0.630	0.716	2,074	6,300	8,374
WA						
2000	1.260	0.310	0.363	5,040	20,848	25,888
2001	1.580	0.450	0.503	5,609	32,175	37,784
2002	1.150	0.450	0.499	5,980	31,005	36,985
US						
2000	1.240	0.336	0.392	6,548	27,052	33,600
2001	1.480	0.450	0.505	7,195	38,745	45,940
2002	1.170	0.473	0.529	8,054	37,305	45,359
All Raspberries						
CA ¹						
2000			1.900			42,940
2001			1.660			41,168
2002			1.400			40,005

¹ No breakdown of utilization available.

**Oregon Blackberries: Harvested Acreage, Yield, Production, and
Utilization by Variety, 2000-2002**

Variety and Year	Area Harvested	Yield Per Acre ¹	Production		Utilization	
			Total	Utilized	Fresh	Processed
	<i>Acres</i>	<i>Pounds</i>	<i>1,000 Pounds</i>	<i>1,000 Pounds</i>	<i>1,000 Pounds</i>	<i>1,000 Pounds</i>
Cultivated Blackberries (OR)						
Marion						
2000	4,400	7,160	31,500	31,500	300	31,200
2001	4,400	6,230	28,100	27,400	900	26,500
2002	4,200	6,500	27,900	27,300	300	27,000
Evergreen						
2000	1,280	7,730	9,900	9,900	400	9,500
2001	1,300	6,770	10,000	8,800	200	8,600
2002	1,300	6,390	9,300	8,300	300	8,000
Other						
2000	460	7,610	3,500	3,500	200	3,300
2001	460	11,700	5,470	5,400	300	5,100
2002	480	13,800	6,600	6,600	800	5,800
All						
2000	6,140	7,310	44,900	44,900	900	44,000
2001	6,160	6,750	43,570	41,600	1,400	40,200
2002	5,980	7,060	43,800	42,200	1,400	40,800

¹ Yield is based on utilized production.

Oregon Blackberries: Price and Value by Variety, 2000-2002

Variety and Year	Price per Pound			Value of Production		
	Fresh	Processed	All	Fresh	Processed	Total
	<i>Dollars</i>	<i>Dollars</i>	<i>Dollars</i>	<i>1,000 Dollars</i>	<i>1,000 Dollars</i>	<i>1,000 Dollars</i>
Cultivated Blackberries (OR)						
Marion						
2000	1.120	0.490	0.496	336	15,288	15,624
2001	0.990	0.430	0.448	891	11,395	12,286
2002	1.160	0.415	0.423	348	11,205	11,553
Evergreen						
2000	1.140	0.385	0.416	456	3,658	4,114
2001	1.020	0.260	0.277	204	2,236	2,440
2002	0.930	0.285	0.308	279	2,280	2,559
Other						
2000	1.070	0.450	0.485	214	1,485	1,699
2001	1.500	0.410	0.471	450	2,091	2,541
2002	1.170	0.560	0.634	936	3,248	4,184
All						
2000	1.120	0.464	0.477	1,006	20,431	21,437
2001	1.100	0.391	0.415	1,545	15,722	17,267
2002	1.120	0.410	0.434	1,563	16,733	18,296

**Sweet Cherries: Bearing Acreage, Yield, Production, and Utilization
by State and United States, 2000-2002¹**

State and Year	Bearing Acreage	Yield Per Acre ²	Production		Utilization	
			Total	Utilized	Fresh	Processed
	<i>Acres</i>	<i>Tons</i>	<i>Tons</i>	<i>Tons</i>	<i>Tons</i>	<i>Tons</i>
CA						
2000	22,000	2.14	47,000	45,700	29,600	16,100
2001	25,000	2.21	55,300	51,100	41,300	9,800
2002	26,000	2.13	55,500	53,700	43,300	10,400
ID						
2000			3,000	2,970		
2001			1,400	1,390		
2002			1,700	1,700		
MI						
2000	7,600	2.58	19,600	19,600	600	19,000
2001	7,400	3.11	23,000	23,000	1,000	22,000
2002	7,400	0.36	2,700	2,600	200	2,400
MT						
2000			1,100	1,050		
2001			2,300	1,850		
2002			2,220	2,080		
NY						
2000	700	1.29	900	900		
2001	700	1.57	1,100	1,050		
2002	700	0.50	350	350		
OR						
2000	11,000	3.36	37,000	36,000	14,500	21,500
2001	11,000	3.64	40,000	34,000	15,500	18,500
2002	12,000	2.58	31,000	29,000	13,000	16,000
PA						
2000			500	500	500	
2001			580	580	580	
2002			355	355	355	
UT						
2000	600	4.00	2,400	2,300	1,600	700
2001	600	1.17	700	650	300	350
2002	600	0.67	400	380	140	240
WA						
2000	18,000	5.28	95,000	95,000	70,000	25,000
2001	22,000	4.82	106,000	106,000	84,000	22,000
2002	25,000	3.44	86,000	86,000	66,000	20,000
US						
2000	61,450	3.36	206,500	204,020	120,760	83,260
2001	68,270	3.37	230,380	219,620	145,710	73,910
2002	73,220	2.46	180,225	176,165	126,455	49,710

¹ Missing data not published to avoid disclosure of individual operations.

² Yield is based on total production.

**Sweet Cherries: Price and Value by State
and United States, 2000-2002¹**

State and Year	Price per Ton			Value of Production		
	Fresh <i>Dollars</i>	Processed <i>Dollars</i>	All <i>Dollars</i>	Fresh <i>1,000 Dollars</i>	Processed <i>1,000 Dollars</i>	All <i>1,000 Dollars</i>
CA						
2000	2,180.00	437.00	1,570.00	64,528	7,036	71,564
2001	1,840.00	390.00	1,560.00	75,992	3,822	79,814
2002	2,090.00	271.00	1,740.00	90,497	2,818	93,315
ID						
2000			1,590.00			4,733
2001			1,300.00			1,802
2002			1,490.00			2,533
MI						
2000	1,680.00	448.00	486.00	1,008	8,512	9,520
2001	1,280.00	446.00	482.00	1,280	9,812	11,092
2002	2,540.00	714.00	855.00	508	1,714	2,222
MT						
2000			1,490.00			1,569
2001			1,130.00			2,082
2002			1,820.00			3,791
NY						
2000			1,370.00			1,230
2001			1,530.00			1,610
2002			1,730.00			605
OR						
2000	956.00	628.00	760.00	13,862	13,502	27,364
2001	1,000.00	709.00	842.00	15,500	13,117	28,617
2002	1,190.00	722.00	932.00	15,470	11,552	27,022
PA						
2000	2,180.00		2,180.00	1,090		1,090
2001	2,260.00		2,260.00	1,311		1,311
2002	2,480.00		2,480.00	880		880
UT						
2000	1,300.00	500.00	1,060.00	2,080	350	2,430
2001	1,200.00	440.00	791.00	360	154	514
2002	2,300.00	1,100.00	1,540.00	322	264	586
WA						
2000	2,000.00	589.00	1,630.00	140,000	14,725	154,725
2001	1,580.00	516.00	1,360.00	132,720	11,352	144,072
2002	1,990.00	570.00	1,660.00	131,340	11,400	142,740
US						
2000	1,900.00	536.00	1,340.00	229,601	44,624	274,225
2001	1,590.00	527.00	1,230.00	231,989	38,925	270,914
2002	1,940.00	564.00	1,550.00	245,660	28,034	273,694

¹ Missing data not published to avoid disclosure of individual operations.

**Tart Cherries: Bearing Acreage, Yield, Production, and Utilization
by State and United States, 2000-2002 ¹**

State and Year	Bearing Acreage	Yield Per Acre ²	Production		Utilization	
			Total	Utilized	Fresh	Processed
	<i>Acres</i>	<i>Pounds</i>	<i>Million Pounds</i>	<i>Million Pounds</i>	<i>Million Pounds</i>	<i>Million Pounds</i>
CO						
2000			0.9	0.8		
2001			0.6	0.6		
2002			0.3	0.3		
MI						
2000	28,500	7,020	200.0	200.0	1.0	199.0
2001	27,400	10,800	297.0	242.0	1.0	241.0
2002	27,400	547	15.0	15.0	0.1	14.9
NY						
2000	2,200	7,550	16.6	16.6	0.1	16.5
2001	2,000	7,350	14.7	14.1	0.1	14.0
2002	2,000	6,350	12.7	12.7	0.1	12.6
OR						
2000	1,300	3,380	4.4	4.2		
2001	1,300	1,850	2.4	2.3		
2002	1,300	2,460	3.2	3.1		
PA						
2000	1,200	5,080	6.1	5.6		
2001	1,200	3,250	3.9	3.9		
2002	1,200	3,170	3.8	3.8		
UT						
2000	2,800	11,800	33.0	27.0		27.0
2001	2,800	4,290	12.0	11.5		11.5
2002	2,800	1,070	3.0	2.8		2.8
WA						
2000			17.5	17.5		
2001			26.5	20.5		
2002			20.5	20.5		
WI						
2000	2,300	4,350	10.0	9.7	0.1	9.6
2001	2,100	6,190	13.0	13.0	0.2	12.8
2002	2,100	1,900	4.0	4.0	0.2	3.8
US						
2000	39,880	7,230	288.5	281.4	1.8	279.6
2001	38,540	9,600	370.1	307.9	1.9	306.0
2002	36,900	1,690	62.5	62.2	0.8	61.4

¹ Missing data not published to avoid disclosure of individual operations.

² Yield is based on total production.

**Tart Cherries: Price and Value by State
and United States, 2000-2002 ¹**

State and Year	Price per Pound			Value of Production		
	Fresh	Processed	All	Fresh	Processed	All
	<i>Dollars</i>	<i>Dollars</i>	<i>Dollars</i>	<i>1,000 Dollars</i>	<i>1,000 Dollars</i>	<i>1,000 Dollars</i>
CO						
2000			0.265			212
2001			0.333			200
2002			0.400			120
MI						
2000	0.550	0.180	0.182	550	35,820	36,370
2001	0.550	0.182	0.184	550	43,862	44,412
2002	0.700	0.478	0.479	70	7,122	7,192
NY						
2000	1.200	0.207	0.213	120	3,416	3,536
2001	1.030	0.190	0.196	103	2,660	2,763
2002	1.200	0.500	0.506	120	6,300	6,420
OR						
2000			0.210			884
2001			0.257			591
2002			0.370			1,147
PA						
2000			0.149			832
2001			0.127			497
2002			0.558			2,121
UT						
2000		0.220	0.220		5,940	5,940
2001		0.218	0.218		2,507	2,507
2002		0.240	0.240		672	672
WA						
2000			0.143			2,503
2001			0.172			3,526
2002			0.398			8,159
WI						
2000	0.510	0.225	0.228	51	2,160	2,211
2001	0.470	0.200	0.204	94	2,560	2,654
2002	0.550	0.510	0.512	110	1,938	2,048
US						
2000	0.575	0.184	0.187	1,035	51,453	52,488
2001	0.538	0.183	0.186	1,022	56,128	57,150
2002	0.845	0.443	0.448	676	27,203	27,879

¹ Missing data not published to avoid disclosure of individual operations.

**Sweet and Tart Cherries: Processed Utilization, Use,
and Price by State and United States, 2000-2002**

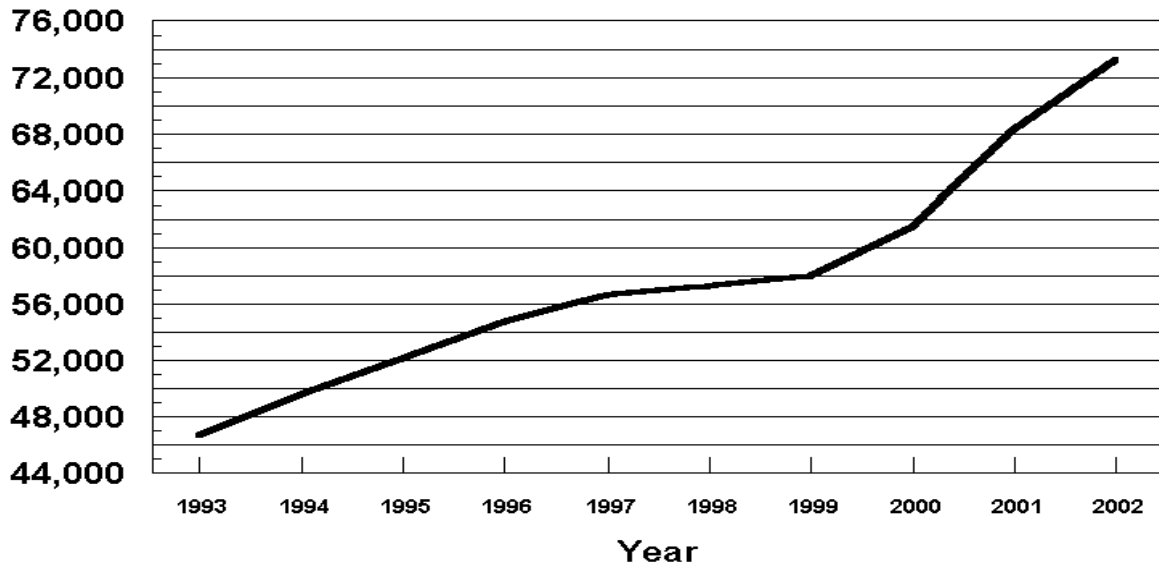
Crop, Use, and State	Processed Utilization					
	Quantity			Price per Unit		
	2000	2001	2002	2000	2001	2002
	<i>Tons</i>	<i>Tons</i>	<i>Tons</i>	<i>Dollars per Ton</i>	<i>Dollars per Ton</i>	<i>Dollars per Ton</i>
Sweet Cherries						
Canned						
MI	3,000	700	280	500.00	450.00	1,000.00
OR	1,000	3,800	2,000	1,008.00	975.00	1,100.00
WA	6,000	4,500	3,500	953.00	1,020.00	1,040.00
US	10,000	9,000	5,780	823.00	957.00	1,059.00
Brined						
MI	14,650	15,500	1,700	430.00	440.00	630.00
OR	19,000	13,000	12,000	622.00	642.00	650.00
WA	11,500	11,000	10,000	516.00	468.00	500.00
Oth Sts	11,450	8,680	7,440	529.00	466.00	399.00
US	56,600	48,180	31,140	532.00	506.00	541.00
Other ¹						
MI	1,350	5,800	420	530.00	460.00	864.00
OR	1,500	1,700	2,000	451.00	625.00	773.00
WA	7,500	6,500	6,500	411.00	248.00	423.00
Oth Sts	6,310	2,730	3,870	291.00	219.00	104.00
US	16,660	16,730	12,790	379.00	355.00	396.00
	<i>Million Pounds</i>	<i>Million Pounds</i>	<i>Million Pounds</i>	<i>Dollars per Pound</i>	<i>Dollars per Pound</i>	<i>Dollars per Pound</i>
Tart Cherries						
Canned						
MI	80.0	80.0	6.5	0.187	0.179	0.460
Oth Sts	15.4	11.9	10.9	0.185	0.170	0.518
US	95.4	91.9	17.4	0.187	0.178	0.497
Frozen						
MI	110.0	151.0	8.0	0.181	0.189	0.500
Oth Sts	34.3	25.8	20.9	0.209	0.206	0.482
US	144.3	176.8	28.9	0.188	0.191	0.487
Other ²						
MI	9.0	10.0	0.4	0.106	0.098	0.340
Oth Sts	30.9	27.3	14.7	0.182	0.181	0.297
US	39.9	37.3	15.1	0.165	0.159	0.298

¹ Includes California canned utilization and other processed utilizations (frozen, juice, etc.) from all States.

² Juice, wine, brined, and dried.

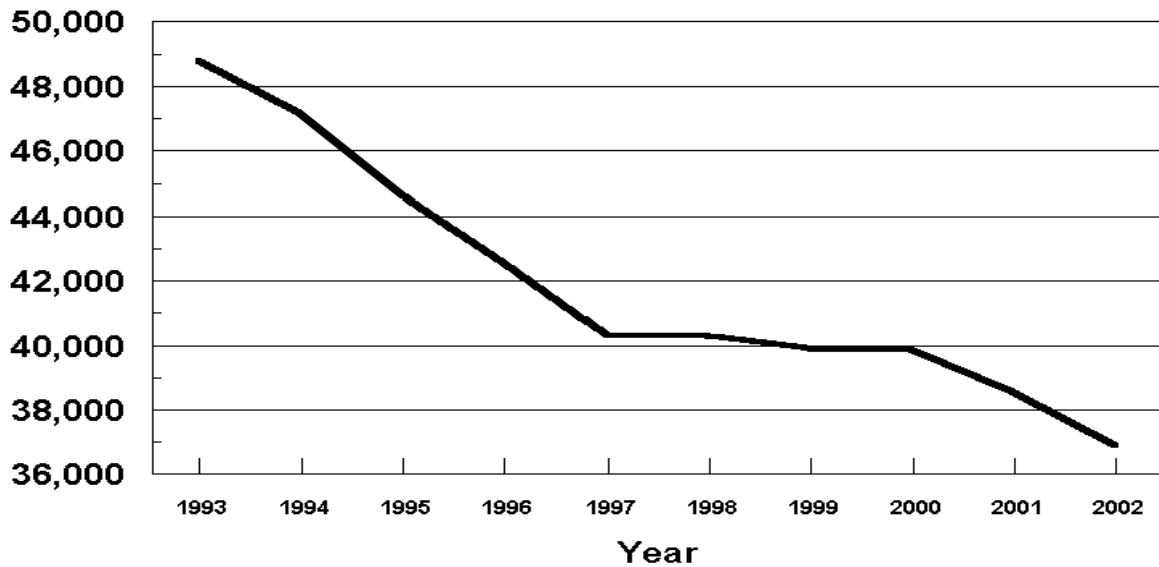
U. S. Sweet Cherries

Bearing Acres
1993 - 2002



U. S. Tart Cherries

Bearing Acres
1993 - 2002



**Cranberries: Area Harvested, Yield, Production and Utilization
by State and United States, 2000-2002**

Year and State	Area Harvested	Yield per Acre ¹	Production		Utilization	
			Total	Utilized	Fresh	Processed
	<i>Acres</i>	<i>Barrels</i> ²	<i>Barrels</i> ²	<i>Barrels</i> ²		
2000						
MA	13,900	140.5	1,953,000	1,953,000	214,000	1,739,000
NJ	3,700	132.2	489,000	469,000		469,000
OR	2,400	165.8	398,000	394,000	4,000	390,000
WA	1,500	120.0	180,000	165,000	37,000	128,000
WI	15,100	178.3	2,692,000	2,598,000	187,000	2,411,000
US	36,600	156.1	5,712,000	5,579,000	442,000	5,137,000
2001						
MA	12,000	118.0	1,416,000	1,414,000	176,000	1,238,000
NJ	3,100	182.6	566,000	412,000		412,000
OR	2,400	152.1	365,000	355,000	7,000	348,000
WA	1,600	88.8	142,000	136,000	34,000	102,000
WI	15,100	188.1	2,840,000	2,466,000	209,000	2,257,000
US	34,200	155.8	5,329,000	4,783,000	426,000	4,357,000
2002						
MA	13,300	109.8	1,460,000	1,460,000	148,000	1,312,000
NJ	3,100	138.7	430,000	430,000		430,000
OR	2,500	160.0	400,000	400,000	8,000	392,000
WA	1,600	101.3	162,000	155,000	30,000	125,000
WI	15,900	200.6	3,190,000	3,190,000	200,000	2,990,000
US	36,400	155.0	5,642,000	5,635,000	386,000	5,249,000

¹ Yield is based on total production.

² A barrel weighs 100 pounds.

**Cranberries: Utilization, Price, and Value
by State and United States, 2000-2002**

Year and State	Price per Barrel ^{1 2}			Value of Utilized Production		
	Fresh	Processed	All	Fresh	Processed	All
	<i>Dollars</i>	<i>Dollars</i>	<i>Dollars</i>	<i>1,000 Dollars</i>	<i>1,000 Dollars</i>	<i>1,000 Dollars</i>
2000						
MA	41.30	16.20	19.00	8,838	28,172	37,010
NJ		17.90	17.90		8,395	8,395
OR	35.00	16.50	16.70	140	6,435	6,575
WA	37.50	17.90	22.30	1,388	2,291	3,679
WI	32.80	16.20	17.40	6,134	39,058	45,192
US	37.30	16.40	18.10	16,500	84,351	100,851
2001						
MA	39.40	20.90	23.20	6,934	25,874	32,808
NJ		22.30	22.30		9,188	9,188
OR	40.90	21.50	21.90	286	7,482	7,768
WA	40.90	22.40	27.00	1,391	2,285	3,676
WI	39.00	21.60	23.10	8,151	48,751	56,902
US	39.30	21.50	23.10	16,762	93,580	110,342
2002						
MA	43.40	26.70	28.40	6,423	35,030	41,453
NJ		25.60	25.60		11,008	11,008
OR	43.90	26.00	26.40	351	10,192	10,543
WA	44.40	25.60	29.20	1,332	3,200	4,532
WI	43.40	26.10	27.20	8,680	78,039	86,719
US	43.50	26.20	27.40	16,786	137,469	154,255

¹ Weighted average of co-op and independent sales. Co-op prices represent pool proceeds less returns for processing non-cranberry products, capital stock dividends, capital stock retains, and other retains.

² A barrel weighs 100 pounds.

**Grapes: Bearing Acreage and Yield by Type,
State, and United States, 2000-2002**

State and Type	Bearing Acreage			Yield per Acre ¹		
	2000	2001	2002	2000	2001	2002
	<i>Acres</i>	<i>Acres</i>	<i>Acres</i>	<i>Tons</i>	<i>Tons</i>	<i>Tons</i>
AZ	4,100	3,200	2,400	4.88	4.84	3.50
AR	1,400	1,500	1,400	3.00	1.80	4.00
CA						
All Types	827,000	803,000	825,000	8.54	7.45	7.88
Wine	458,000	480,000	491,000	7.34	6.36	6.31
Table	89,000	88,000	88,000	8.70	8.10	8.52
Raisin ²	280,000	235,000	246,000	10.40	9.43	10.80
GA	1,200	1,100	1,100	2.92	2.91	2.55
MI	12,500	12,300	12,300	6.98	2.35	3.47
MO	850	870	800	3.47	2.64	3.63
NY	31,500	31,500	31,000	4.89	4.73	5.03
NC	600	700	850	3.83	2.86	2.71
OH	2,000	2,000	2,100	3.85	3.00	2.76
OR	8,100	8,800	9,500	2.30	2.59	2.40
PA	12,800	12,800	12,800	4.92	4.80	4.16
SC ³	400			1.30		
TX ⁴		2,900	2,900		3.28	1.62
VA ⁴		1,750	1,900		2.40	2.53
WA						
All Types	44,000	48,000	49,800	6.02	5.90	6.67
Wine	20,000	24,000	24,800	4.50	4.17	4.64
Juice	24,000	24,000	25,000	7.29	7.63	8.68
US	946,450	930,420	953,850	8.12	7.06	7.49

¹ Yield is based on total production.

² The Raisin Industry Diversion Program (RID) was implemented in 2001 and 2002. Acres enrolled were 41,000 for 2001, and 27,000 for 2002. These acres were deducted from bearing acres.

³ Estimates discontinued in 2001.

⁴ Estimates began in 2001.

**Grapes: Total and Utilized Production, Price, and Value
by Type, State, and United States, 2000-2002**

State and Type	Total Production			Utilized Production		
	2000	2001	2002	2000	2001	2002
	<i>Tons</i>	<i>Tons</i>	<i>Tons</i>	<i>Tons</i>	<i>Tons</i>	<i>Tons</i>
AZ	20,000	15,500	8,400	20,000	15,500	8,400
AR	4,200	2,700	5,600	3,900	2,500	5,400
CA						
All Types	7,059,000	5,979,000	6,500,000	7,059,000	5,979,000	6,500,000
Wine	3,364,000	3,051,000	3,100,000	3,364,000	3,051,000	3,100,000
Table ¹	774,000	713,000	750,000	774,000	713,000	750,000
Raisin ¹	2,921,000	2,215,000	2,650,000	2,921,000	2,215,000	2,650,000
GA	3,500	3,200	2,800	3,200	3,200	2,760
MI	87,200	28,900	42,700	87,200	28,500	42,500
MO	2,950	2,300	2,900	2,950	2,300	2,900
NY	154,000	149,000	156,000	154,000	149,000	155,000
NC	2,300	2,000	2,300	2,300	2,000	2,300
OH	7,700	6,000	5,800	7,700	6,000	5,800
OR	18,600	22,800	22,800	18,600	22,800	22,800
PA	63,000	61,500	53,200	63,000	61,500	53,200
SC ²	520			480		
TX ³		9,500	4,700		9,300	4,400
VA ³		4,200	4,800		3,800	4,400
WA						
All Types	265,000	283,000	332,000	265,000	283,000	332,000
Wine	90,000	100,000	115,000	90,000	100,000	115,000
Juice	175,000	183,000	217,000	175,000	183,000	217,000
US	7,687,970	6,569,600	7,144,000	7,687,330	6,568,400	7,141,860
	Price per Ton			Value of Utilized Production		
	2000	2001	2002	2000	2001	2002
	<i>Dollars</i>	<i>Dollars</i>	<i>Dollars</i>	<i>1,000 Dollars</i>	<i>1,000 Dollars</i>	<i>1,000 Dollars</i>
AZ ⁴	718.00	576.00	966.00	14,369	8,921	8,115
AR	560.00	541.00	462.00	2,185	1,353	2,495
CA ⁴						
All Types	401.00	445.00	407.00	2,831,236	2,658,587	2,644,641
Wine	567.00	597.00	566.00	1,908,649	1,820,106	1,754,850
Table ¹	565.00	610.00	597.00	437,448	435,177	447,891
Raisin ¹	166.00	182.00	167.00	485,139	403,304	441,900
GA	1,230.00	1,050.00	1,060.00	3,920	3,370	2,936
MI	277.00	313.00	312.00	24,156	8,926	13,280
MO	555.00	630.00	615.00	1,636	1,448	1,783
NY	298.00	302.00	280.00	45,940	45,004	43,336
NC	1,160.00	1,270.00	1,280.00	2,661	2,532	2,934
OH	327.00	342.00	381.00	2,515	2,053	2,209
OR	1,400.00	1,480.00	1,460.00	26,040	33,744	33,288
PA	265.00	274.00	239.00	16,688	16,871	12,692
SC ²	669.00			321		
TX ³		900.00	880.00		8,370	3,872
VA ³		1,260.00	1,490.00		4,788	6,556
WA						
All Types	481.00	470.00	405.00	127,460	133,071	134,605
Wine	899.00	897.00	878.00	80,910	89,700	100,970
Juice	266.00	237.00	155.00	46,550	43,371	33,635
US	403.00	446.00	408.00	3,099,127	2,929,038	2,912,742

¹ Fresh equivalent of dried and not dried.

² Estimates discontinued in 2001.

³ Estimates began in 2001.

⁴ The 2002 prices for CA and AZ grapes utilized for raisins are not available. Price and value of grapes utilized for raisins in 2002 were derived by using the 2001 comparable prices.

**Grapes: Fresh and Processed Utilization, and Price
by Type, State, and United States, 2000-2002¹**

Utilization, State, and Type	Fresh and Processed Utilization					
	Quantity			Price per Ton		
	2000	2001	2002	2000	2001	2002
	<i>Tons</i>	<i>Tons</i>	<i>Tons</i>	<i>Dollars</i>	<i>Dollars</i>	<i>Dollars</i>
Fresh						
AZ	12,100	10,200		1,040.00	740.00	
AR	800			600.00		
CA						
All Types	888,000	849,000	926,000	640.00	688.00	679.00
Wine	45,000	45,000	45,000	300.00	300.00	300.00
Table	613,000	587,000	646,000	680.00	720.00	680.00
Raisin	230,000	217,000	235,000	600.00	680.00	750.00
GA	1,000	1,700		1,500.00	1,100.00	
MI	500	300	300	800.00	800.00	800.00
MO	150	100	240	640.00	840.00	780.00
NY	2,000	1,000	2,000	550.00	900.00	860.00
NC			300			1,780.00
OH	100	100	100	600.00	760.00	940.00
PA	1,500	1,000	1,000	465.00	173.00	164.00
Oth Sts	675	1,000	7,500	1,510.00	1,230.00	1,160.00
US	906,825	864,400	937,440	647.00	689.00	683.00
Processed						
AZ ²	7,900	5,300		226.00	259.00	
AR	3,100			550.00		
CA ²						
All Types	6,171,000	5,130,000	5,574,000	367.00	404.00	362.00
Wine	3,319,000	3,006,000	3,055,000	571.00	601.00	570.00
Table	161,000	126,000	104,000	128.00	99.50	82.80
Raisin	2,691,000	1,998,000	2,415,000	129.00	128.00	110.00
GA	2,200	1,500		1,100.00	1,000.00	
MI	86,700	28,200	42,200	274.00	308.00	309.00
MO	2,800	2,200	2,660	550.00	620.00	600.00
NY	152,000	148,000	153,000	295.00	298.00	272.00
NC			2,000			1,200.00
OH	7,600	5,900	5,700	323.00	335.00	371.00
OR ³	18,600	22,800	22,800	1,400.00	1,480.00	1,460.00
PA	61,500	60,500	52,200	260.00	276.00	240.00
TX ^{3 4}		9,300	4,400		900.00	880.00
VA ⁴		3,800	4,400		1,260.00	1,490.00
WA						
All Types	265,000	283,000	332,000	481.00	470.00	405.00
Wine	90,000	100,000	115,000	899.00	897.00	878.00
Juice	175,000	183,000	217,000	266.00	237.00	155.00
Oth Sts	2,105	3,500	9,060	933.00	758.00	538.00
US	6,780,505	5,704,000	6,204,420	371.00	409.00	366.00

¹ Missing data included in Other States to avoid disclosure of individual operations.

² The 2002 prices for CA and AZ grapes utilized for raisins are not available. Prices of grapes utilized for raisins in 2002 were derived by using the 2001 comparable prices.

³ Includes small quantities sold fresh.

⁴ Estimates began in 2001.

**Grapes: Fresh and Processed Value by Type,
State, and United States, 2000-2002¹**

Utilization, State, and Type	Fresh and Processed Utilization		
	Value of Utilized Production		
	2000	2001	2002
	<i>1,000 Dollars</i>	<i>1,000 Dollars</i>	<i>1,000 Dollars</i>
Fresh			
AZ	12,584	7,548	
AR	480		
CA			
All Types	568,340	583,700	629,030
Wine	13,500	13,500	13,500
Table	416,840	422,640	439,280
Raisin	138,000	147,560	176,250
GA	1,500	1,870	
MI	400	240	240
MO	96	84	187
NY	1,100	900	1,720
NC			534
OH	60	76	94
PA	698	173	164
Oth Sts	1,018	1,232	8,674
US	586,276	595,823	640,643
Processed			
AZ ²	1,785	1,373	
AR	1,705		
CA ²			
All Types	2,262,896	2,074,887	2,015,611
Wine	1,895,149	1,806,606	1,741,350
Table	20,608	12,537	8,611
Raisin	347,139	255,744	265,650
GA	2,420	1,500	
MI	23,756	8,686	13,040
MO	1,540	1,364	1,596
NY	44,840	44,104	41,616
NC			2,400
OH	2,455	1,977	2,115
OR ³	26,040	33,744	33,288
PA	15,990	16,698	12,528
TX ^{3 4}		8,370	3,872
VA ⁴		4,788	6,556
WA			
All Types	127,460	133,071	134,605
Wine	80,910	89,700	100,970
Juice	46,550	43,371	33,635
Oth Sts	1,964	2,653	4,872
US	2,512,851	2,333,215	2,272,099

¹ Missing data included in Other States to avoid disclosure of individual operations.

² The 2002 prices for CA and AZ grapes utilized for raisins are not available. Price and value of grapes utilized for raisins in 2002 were derived by using the 2001 comparable prices.

³ Includes small quantities sold fresh.

⁴ Estimates began in 2001.

**Grapes: Processed Utilization, Use, and Price
by Type, State, and United States, 2000-2002**

Use and State	Processed Utilization					
	Quantity			Price per Ton		
	2000	2001	2002	2000	2001	2002
	<i>Tons</i>	<i>Tons</i>	<i>Tons</i>	<i>Dollars</i>	<i>Dollars</i>	<i>Dollars</i>
Canned						
CA						
Raisin	32,000	29,000	31,000	270.00	270.00	270.00
US	32,000	29,000	31,000	270.00	270.00	270.00
Juice ^{1 2}						
MI	83,600	26,000	39,200	258.00	255.00	262.00
NY	111,000	107,000	109,000	265.00	262.00	233.00
OH	6,400	4,700	4,500	264.00	261.00	279.00
PA	46,000	48,500	45,900	257.00	262.00	233.00
WA	175,000	183,000	217,000	266.00	237.00	155.00
Oth Sts	2,250	650	2,200	325.00	298.00	282.00
US	424,250	369,850	417,800	263.00	249.00	196.00
Wine						
CA						
All Types	3,952,000	3,369,000	3,735,000	499.00	546.00	478.00
Wine	3,319,000	3,006,000	3,055,000	571.00	601.00	570.00
Table	120,000	101,000	80,000	118.00	87.20	65.00
Raisin	513,000	262,000	600,000	125.00	85.70	65.00
GA	2,200	1,500		1,100.00	1,000.00	
MI	3,100	2,200	3,000	825.00	940.00	920.00
MO	2,750	2,150	2,460	550.00	620.00	600.00
NY	41,000	41,000	44,000	377.00	391.00	369.00
NC			2,000			1,200.00
OH	1,200	1,200	1,200	640.00	623.00	713.00
OR ²	18,600	22,800	22,800	1,400.00	1,480.00	1,460.00
PA	15,500	12,000	6,300	266.00	333.00	288.00
TX ^{2 3}		9,300	4,400		900.00	880.00
VA ³		3,800	4,400		1,260.00	1,490.00
WA	90,000	100,000	115,000	899.00	897.00	878.00
Oth Sts	3,305	3,400	5,010	987.00	826.00	783.00
US	4,129,655	3,568,350	3,945,570	511.00	562.00	497.00
Dried ⁴						
(Fr Basis)						
AZ	7,600	4,800	2,050	195.00	220.00	
CA						
All Types	2,187,000	1,732,000	1,808,000	129.00	132.00	
Table	41,000	25,000	24,000	157.00	149.00	
Raisin	2,146,000	1,707,000	1,784,000	128.00	132.00	
US	2,194,600	1,736,800	1,810,050	129.00	132.00	

¹ Includes small quantities of other processed (jam, jelly, etc.).

² Includes small quantities for other uses.

³ Estimates began in 2001.

⁴ The 2002 price is not available. Prices for crop year 2002 will be published on July 8, 2003.

**Concord Grapes: Processed Utilization by State
and United States, 2000-2002 ¹**

State	Processed Utilization		
	2000	2001	2002
	<i>Tons</i>	<i>Tons</i>	<i>Tons</i>
MI	64,500	19,000	25,300
MO	270	300	
NY	113,300	107,200	108,000
OH	5,900	4,300	4,000
PA	45,500	52,000	44,800
WA	160,000	167,000	199,000
Oth Sts	2,205	810	2,700
US	391,675	350,610	383,800

¹ Missing data included in Other States to avoid disclosure of individual operations.

**Niagara Grapes: Processed Utilization by State
and United States, 2000-2002**

State	Processed Utilization		
	2000	2001	2002
	<i>Tons</i>	<i>Tons</i>	<i>Tons</i>
MI	19,100	7,000	13,900
NY	13,900	15,100	19,000
OH	450	350	500
PA	4,050	4,500	4,200
WA	15,000	16,000	18,000
US	52,500	42,950	55,600

**Peaches: Bearing Acreage and Yield by Type,
State, and United States, 2000-2002**

State	Bearing Acreage			Yield per Acre ¹		
	2000	2001	2002	2000	2001	2002
	<i>Acres</i>	<i>Acres</i>	<i>Acres</i>	<i>Pounds</i>	<i>Pounds</i>	<i>Pounds</i>
AL	3,400	3,500	2,800	4,120	6,570	7,500
AR	3,000	3,000	2,800	6,000	4,000	3,570
CA						
All	67,200	67,800	70,000	27,600	25,500	27,400
Clingstone	28,200	28,800	31,000	37,700	33,100	36,300
Freestone	39,000	39,000	39,000	20,300	19,900	20,400
CO	1,900	1,900	1,900	10,000	9,470	10,000
CT	330	330	330	6,060	5,760	3,940
GA	17,000	15,000	15,000	6,760	9,330	7,330
ID	820	820	820	15,900	15,900	15,900
IL	1,600	1,600	1,600	14,400	11,100	10,800
IN	650	650	650	4,000	4,620	4,770
KY	310	280	240	3,550	6,430	5,000
LA	320	310	300	3,750	4,520	5,000
MD	1,100	1,100	1,000	8,180	8,000	7,000
MA	340	350	370	6,180	6,290	6,220
MI	4,800	4,600	4,700	9,900	9,130	2,980
MO	1,600	1,600	1,800	5,940	5,630	7,220
NJ	8,000	8,000	8,000	8,130	9,380	7,750
NY	1,600	1,600	1,700	7,500	7,810	5,880
NC	1,400	1,200	1,200	8,570	2,920	8,330
OH	900	1,000	1,200	11,600	11,200	7,830
OK	1,300	1,300	1,400	10,800	9,230	5,000
OR	950	950	950	8,420	6,840	8,320
PA	5,500	4,200	4,200	10,900	17,900	14,300
SC	16,500	16,000	16,000	9,090	6,250	10,000
TN	600	600	500	4,170	6,170	8,000
TX	8,000	7,500	7,500	2,630	4,000	1,600
UT	1,300	1,300	1,300	8,460	6,920	5,000
VA	1,260	1,260	1,260	7,940	6,350	5,560
WA	2,500	2,700	2,800	26,000	20,400	20,000
WV	1,200	1,200	1,100	5,830	9,170	9,090
US	155,380	151,650	153,420	16,600	16,000	16,800

¹ Yield is based on total production.

**Peaches: Total and Utilized Production, by Type,
State, and United States, 2000-2002**

State	Total Production			Utilized Production		
	2000	2001	2002	2000	2001	2002
	<i>Million Pounds</i>	<i>Million Pounds</i>	<i>Million Pounds</i>	<i>Million Pounds</i>	<i>Million Pounds</i>	<i>Million Pounds</i>
AL	14.0	23.0	21.0	13.0	22.0	19.0
AR	18.0	12.0	10.0	15.7	10.3	7.8
CA						
All	1,855.0	1,727.0	1,920.0	1,808.0	1,677.0	1,870.0
Clingstone	1,064.0	952.0	1,124.0	1,017.0	902.0	1,074.0
Freestone	791.0	775.0	796.0	791.0	775.0	796.0
CO	19.0	18.0	19.0	17.0	17.5	18.5
CT	2.0	1.9	1.3	2.0	1.9	1.3
GA	115.0	140.0	110.0	110.0	125.0	102.0
ID	13.0	13.0	13.0	13.0	12.9	13.0
IL	23.0	17.8	17.2	20.0	17.1	16.5
IN	2.6	3.0	3.1	2.5	2.9	3.0
KY	1.1	1.8	1.2	1.1	1.8	1.2
LA	1.2	1.4	1.5	1.1	1.3	1.4
MD	9.0	8.8	7.0	9.0	8.8	7.0
MA	2.1	2.2	2.3	2.1	2.1	2.2
MI	47.5	42.0	14.0	45.5	42.0	14.0
MO	9.5	9.0	13.0	9.5	9.0	13.0
NJ	65.0	75.0	62.0	58.0	70.0	57.0
NY	12.0	12.5	10.0	11.3	12.0	10.0
NC	12.0	3.5	10.0	12.0	3.5	10.0
OH	10.4	11.2	9.4	9.1	11.0	9.1
OK	14.0	12.0	7.0	12.5	10.3	5.8
OR	8.0	6.5	7.9	7.8	6.4	7.4
PA	60.0	75.0	60.0	58.0	74.0	59.0
SC	150.0	100.0	160.0	140.0	85.0	130.0
TN	2.5	3.7	4.0	2.3	3.5	3.7
TX	21.0	30.0	12.0	17.3	26.0	11.4
UT	11.0	9.0	6.5	10.0	8.9	6.5
VA	10.0	8.0	7.0	9.0	7.0	6.7
WA	65.0	55.0	56.0	65.0	55.0	56.0
WV	7.0	11.0	10.0	7.0	10.7	10.0
US	2,579.9	2,433.3	2,575.4	2,488.8	2,334.9	2,472.5

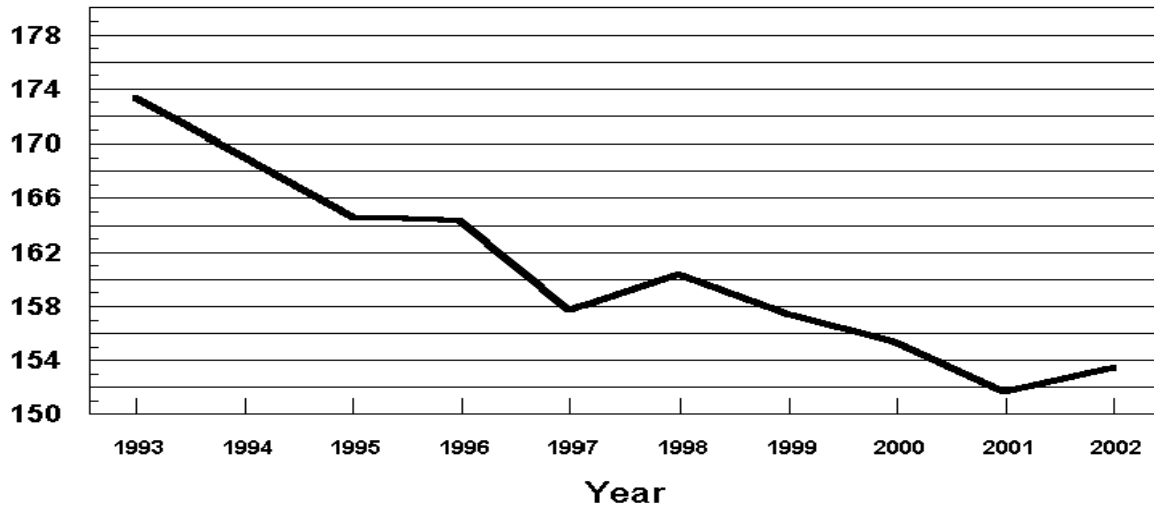
**Peaches: Price and Value by Type, State,
and United States, 2000-2002**

State	Price per Pound			Value of Utilized Production		
	2000	2001	2002	2000	2001	2002
	<i>Dollars</i>	<i>Dollars</i>	<i>Dollars</i>	<i>1,000 Dollars</i>	<i>1,000 Dollars</i>	<i>1,000 Dollars</i>
AL	0.405	0.418	0.440	5,265	9,196	8,360
AR	0.370	0.407	0.428	5,811	4,193	3,336
CA						
All	0.139	0.147	0.145	251,609	246,743	271,008
Clingstone	0.125	0.122	0.124	127,125	110,044	132,639
Freestone	0.157	0.176	0.174	124,484	136,699	138,369
CO	0.470	0.540	0.567	7,990	9,450	10,490
CT	0.650	0.650	0.700	1,300	1,235	910
GA	0.379	0.280	0.385	41,703	35,033	39,276
ID	0.387	0.494	0.427	5,034	6,368	5,546
IL	0.412	0.420	0.470	8,240	7,182	7,755
IN	0.414	0.583	0.733	1,035	1,691	2,199
KY	0.346	0.487	0.545	381	877	654
LA	0.771	0.871	0.751	848	1,132	1,051
MD	0.398	0.367	0.392	3,582	3,226	2,741
MA	0.700	0.700	0.800	1,470	1,470	1,760
MI	0.249	0.298	0.318	11,340	12,503	4,452
MO	0.350	0.365	0.420	3,325	3,285	5,460
NJ	0.427	0.405	0.442	24,774	28,350	25,194
NY	0.400	0.311	0.238	4,524	3,736	2,375
NC	0.370	0.400	0.350	4,440	1,400	3,500
OH	0.468	0.490	0.496	4,259	5,390	4,514
OK	0.509	0.459	0.577	6,363	4,728	3,347
OR	0.423	0.427	0.409	3,300	2,735	3,028
PA	0.287	0.335	0.335	16,650	24,810	19,792
SC	0.204	0.425	0.329	28,594	36,098	42,705
TN	0.545	0.484	0.470	1,254	1,694	1,739
TX	0.580	0.570	0.600	10,034	14,820	6,840
UT	0.300	0.218	0.312	3,000	1,936	2,031
VA	0.300	0.317	0.410	2,700	2,219	2,747
WA	0.325	0.338	0.378	21,096	18,588	21,179
WV	0.256	0.300	0.310	1,795	3,210	3,100
US	0.194	0.211	0.205	481,716	493,298	507,089

U. S. Peaches

Bearing Acres
1993 - 2002

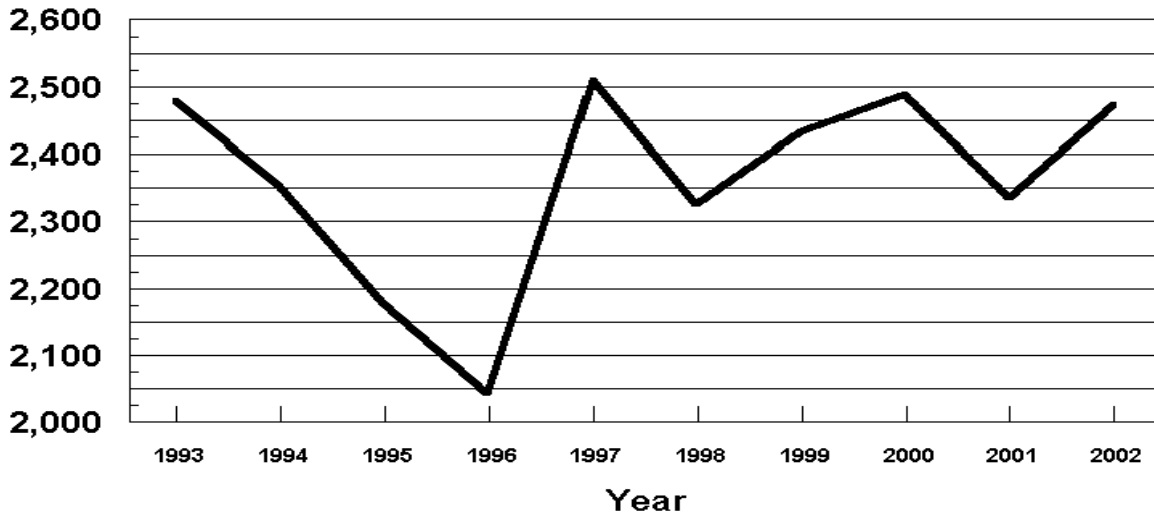
(000) Acres



U. S. Peaches

Utilized Production
1993 - 2002

Million Pounds



**Peaches: Fresh and Processed Utilization, and Price
by Type, State, and United States, 2000-2002 ¹**

Use and State	Fresh and Processed Utilization					
	Quantity			Price per Unit		
	2000	2001	2002	2000	2001	2002
	<i>Million Pounds</i>	<i>Million Pounds</i>	<i>Million Pounds</i>	<i>Dollars per Pound</i>	<i>Dollars per Pound</i>	<i>Dollars per Pound</i>
Fresh						
AL	13.0	22.0	19.0	0.405	0.418	0.440
CA						
Freestone	538.0	538.0	555.7	0.190	0.214	0.209
CT	2.0	1.9	1.3	0.650	0.650	0.700
IL	20.0	17.1	16.5	0.412	0.420	0.470
IN	2.5	2.9	3.0	0.414	0.583	0.733
KY	1.1	1.8	1.2	0.346	0.487	0.545
LA	1.1	1.3	1.4	0.771	0.871	0.751
MD	9.0	8.6	6.9	0.398	0.373	0.396
MA	2.1	2.1	2.2	0.700	0.700	0.800
MI	29.5	27.0	10.6	0.280	0.375	0.370
MO	9.5	9.0	13.0	0.350	0.365	0.420
OH	9.1	11.0	9.1	0.468	0.490	0.496
OK	12.5	10.3	5.8	0.509	0.459	0.577
SC	118.0	80.0	115.0	0.211	0.443	0.357
TN	2.3	3.5	3.7	0.545	0.484	0.470
TX	17.3	26.0	11.4	0.580	0.570	0.600
VA	9.0	7.0	6.7	0.300	0.317	0.410
WV		10.7	10.0		0.300	0.310
Oth Sts	365.1	373.8	326.7	0.380	0.360	0.410
US	1,161.1	1,154.0	1,119.2	0.279	0.309	0.311
	<i>Million Pounds</i>	<i>Million Pounds</i>	<i>Million Pounds</i>	<i>Dollars per Ton</i>	<i>Dollars per Ton</i>	<i>Dollars per Ton</i>
Processed						
CA						
Clingstone	1,017.0	902.0	1,074.0	250.00	244.00	247.00
Freestone ²	253.0	237.0	240.3	176.00	182.00	185.00
MI	16.0	15.0	3.4	385.00	317.00	312.00
SC	22.0	5.0	15.0	336.00	263.00	220.00
Oth Sts	19.7	21.9	20.6	140.00	179.00	177.00
US ³	1,327.7	1,180.9	1,353.3	237.00	231.00	235.00

¹ Missing data included in Other States to avoid disclosure of individual operations.

² CA Freestone quantity and value include dried, price excludes dried.

³ US quantity, price, and value include dried.

**Peaches: Fresh and Processed Value by State
and United States, 2000-2002 ¹**

Use and State	Fresh and Processed Utilization		
	Value of Utilized Production		
	2000	2001	2002
	<i>1,000 Dollars</i>	<i>1,000 Dollars</i>	<i>1,000 Dollars</i>
Fresh			
AL	5,265	9,196	8,360
CA			
Freestone	102,220	115,132	116,141
CT	1,300	1,235	910
IL	8,240	7,182	7,755
IN	1,035	1,691	2,199
KY	381	877	654
LA	848	1,132	1,051
MD	3,582	3,208	2,732
MA	1,470	1,470	1,760
MI	8,260	10,125	3,922
MO	3,325	3,285	5,460
OH	4,259	5,390	4,514
OK	6,363	4,728	3,347
SC	24,898	35,440	41,055
TN	1,254	1,694	1,739
TX	10,034	14,820	6,840
VA	2,700	2,219	2,747
WV		3,210	3,100
Oth Sts	138,738	134,658	133,936
US	324,172	356,692	348,222
Processed			
CA			
Clingstone	127,125	110,044	132,639
Freestone ²	22,264	21,567	22,228
MI	3,080	2,378	530
SC	3,696	658	1,650
Oth Sts	1,379	1,959	1,820
US ³	157,544	136,606	158,867

¹ Missing data included in Other States to avoid disclosure of individual operations.

² CA Freestone quantity and value include dried, price excludes dried.

³ US quantity, price, and value include dried.

**Peaches: Processed Utilization, and Price by Use,
State, and United States, 2000-2002**¹

Use and State	Processed Utilization					
	Quantity			Price per Ton		
	2000	2001	2002	2000	2001	2002
	<i>Million Pounds</i>	<i>Million Pounds</i>	<i>Million Pounds</i>	<i>Dollars</i>	<i>Dollars</i>	<i>Dollars</i>
Canned						
CA						
Clingstone	973.9	870.2	1,023.0	251.00	244.00	244.00
Oth Sts	52.9	36.5	38.4	276.00	232.00	229.00
US	1,026.8	906.7	1,061.4	252.00	244.00	243.00
Frozen						
CA						
Freestone	185.3	172.0	182.2	200.00	214.00	205.00
Oth Sts	34.2	28.7	22.1	251.00	270.00	288.00
US	219.5	200.7	204.3	208.00	222.00	214.00
Dried						
CA						
Freestone	25.2	29.2	28.4	78.00	51.00	49.00
US	25.2	29.2	28.4	78.00	51.00	49.00
Other ²						
Oth Sts	56.2	44.3	59.2	147.00	150.00	245.00
US	56.2	44.3	59.2	147.00	150.00	245.00

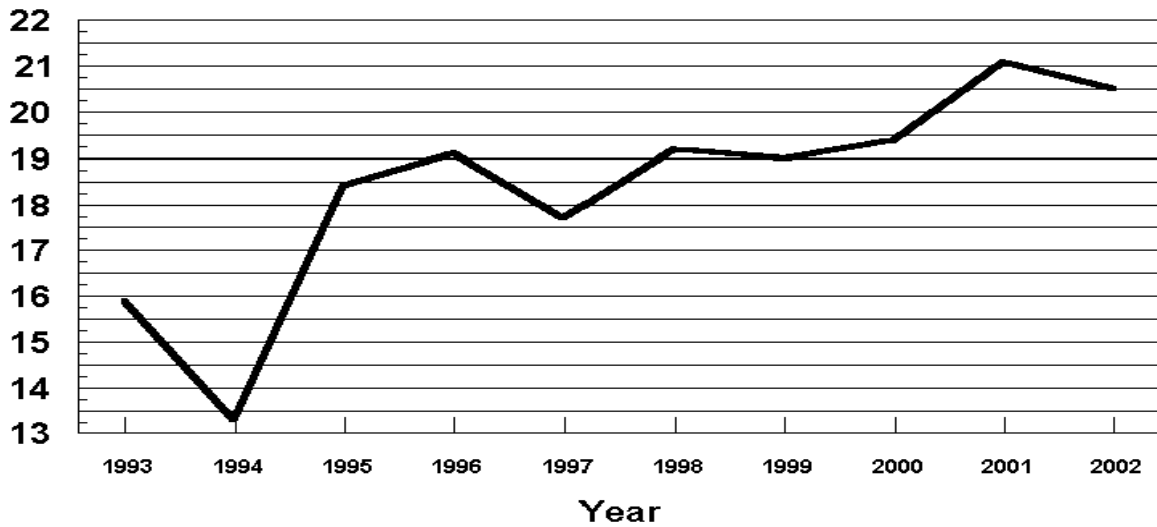
¹ Missing data included in Other States to avoid disclosure of individual operations.

² Pickled, wine, brandy, and baby food.

U.S. Peaches

Prices Received
1993 - 2002

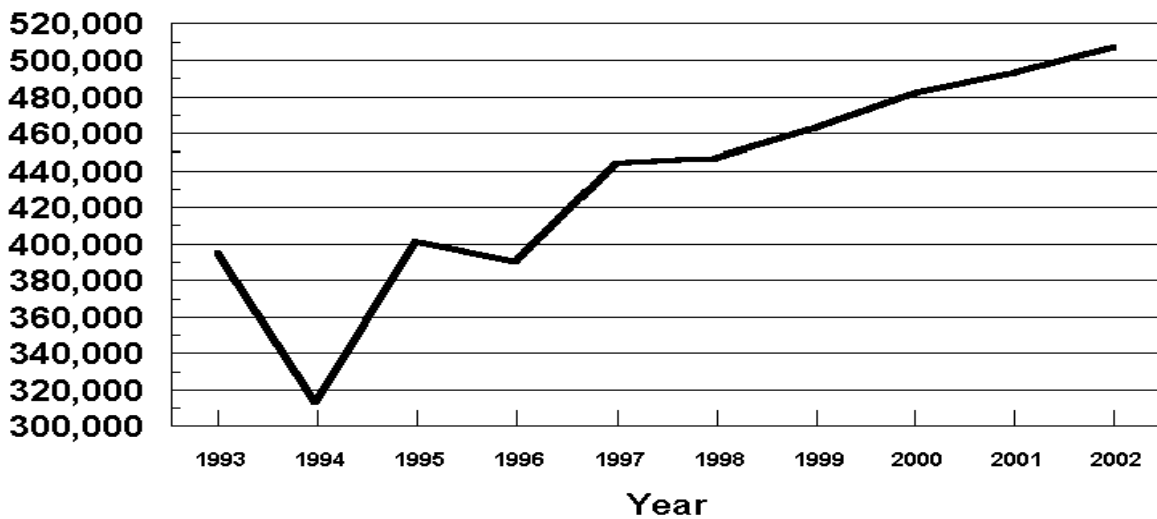
Cents Per Pound



U.S. Peaches

Value of Utilized Production
1993- 2002

(000) Dollars



**All Pears: Bearing Acreage, Yield, Production, and Utilization
by State and United States, 2000-2002¹**

State and Year	Bearing Acreage	Yield Per Acre ²	Production		Utilization	
			Total	Utilized	Fresh	Processed
	<i>Acres</i>	<i>Tons</i>	<i>Tons</i>	<i>Tons</i>	<i>Tons</i>	<i>Tons</i>
CA						
2000	19,300	16.20	312,000	297,000		
2001	18,300	16.70	305,000	270,000		
2002	17,800	16.50	294,000	294,000		
CO						
2000			3,000	2,960		
2001			1,900	1,900		
2002			2,400	2,400		
CT						
2000			1,250	1,250		
2001			480	480		
2002			500	500		
MI						
2000	800	6.50	5,200	5,200		
2001	800	5.75	4,600	3,900		
2002	800	1.75	1,400	1,400		
NY						
2000	2,000	7.25	14,500	12,900		
2001	1,400	7.86	11,000	10,000		
2002	1,400	7.14	10,000	9,850		
OR						
2000	17,800	12.40	220,000	219,000		
2001	17,000	13.50	230,000	229,500		
2002	17,000	11.60	198,000	198,000		
PA						
2000	1,000	4.60	4,600	4,400		
2001	1,000	5.50	5,500	5,200		
2002	1,000	3.80	3,800	3,500		
UT						
2000	180	3.33	600	460		
2001	180	1.67	300	300		
2002	180	1.94	350	350		
WA						
2000	24,400	16.60	406,000	406,000		
2001	24,800	17.90	443,000	443,000		
2002	24,800	16.20	401,000	401,000		
US ³						
2000	66,060	14.60	967,150	949,170	547,130	402,040
2001	64,030	15.60	1,001,780	964,280	543,170	421,110
2002	63,515	14.40	911,450	911,000	519,870	391,130

¹ Missing data not published to avoid disclosure of individual operations.

² Yield is based on total production.

³ Processed mostly canned, but includes small quantities dried and other uses not published separately to avoid disclosure of individual operations.

**All Pears: Price and Value by State
and United States, 2000-2002 ¹**

State and Year	Price per Ton			Value of Production		
	Fresh	Processed Exc. Dried	All	Fresh	Processed Inc. Dried	All
	<i>Dollars</i>	<i>Dollars</i>	<i>Dollars</i>	<i>1,000 Dollars</i>	<i>1,000 Dollars</i>	<i>1,000 Dollars</i>
CA						
2000			228.00			67,776
2001			289.00			78,163
2002			268.00			78,830
CO						
2000			375.00			1,111
2001			500.00			950
2002			576.00			1,383
CT						
2000			562.00			703
2001			644.00			309
2002			858.00			429
MI						
2000			270.00			1,402
2001			297.00			1,160
2002			318.00			445
NY						
2000			353.00			4,551
2001			401.00			4,008
2002			374.00			3,682
OR						
2000			303.00			66,249
2001			278.00			63,700
2002			343.00			68,004
PA						
2000			509.00			2,241
2001			569.00			2,960
2002			480.00			1,681
UT						
2000			533.00			245
2001			583.00			175
2002			643.00			225
WA						
2000			261.00			105,995
2001			272.00			120,363
2002			356.00			142,731
US ²						
2000	318.00	190.00	264.00	173,762	76,511	250,273
2001	365.00	175.00	282.00	198,355	73,433	271,788
2002	413.00	212.00	326.00	214,485	82,925	297,410

¹ Missing data not published to avoid disclosure of individual operations.

² Processed mostly canned, but includes small quantities dried and other uses not published separately to avoid disclosure of individual operations.

**Pears: Bearing Acreage, Yield, Production, and Utilization
by Type, State, and United States, 2000-2002 ¹**

Type, State and Year	Bearing Acreage	Yield Per Acre ²	Production		Utilization	
			Total	Utilized	Fresh	Processed
	<i>Acres</i>	<i>Tons</i>	<i>Tons</i>	<i>Tons</i>	<i>Tons</i>	<i>Tons</i>
Bartlett ³						
CA						
2000	15,000	18.80	282,000	267,000	81,000	186,000
2001	14,000	19.60	275,000	240,000	67,000	173,000
2002	13,500	19.60	264,000	264,000	77,000	187,000
OR						
2000	5,000	12.00	60,000	59,000	29,000	30,000
2001	4,600	15.20	70,000	69,500	27,500	42,000
2002	4,600	12.60	58,000	58,000	23,000	35,000
WA						
2000	11,200	15.70	176,000	176,000	47,000	129,000
2001	11,300	17.80	201,000	201,000	49,000	152,000
2002	11,300	14.80	167,000	167,000	47,000	120,000
Total						
2000	31,200	16.60	518,000	502,000	157,000	345,000
2001	29,900	18.30	546,000	510,500	143,500	367,000
2002	29,400	16.60	489,000	489,000	147,000	342,000
Other ⁴						
CA						
2000	4,300	6.98	30,000	30,000		
2001	4,300	6.98	30,000	30,000		
2002	4,300	6.98	30,000	30,000		
OR						
2000	12,800	12.50	160,000	160,000		
2001	12,400	12.90	160,000	160,000		
2002	12,400	11.30	140,000	140,000		
WA						
2000	13,200	17.40	230,000	230,000		
2001	13,500	17.90	242,000	242,000		
2002	13,500	17.30	234,000	234,000		
Total						
2000	30,300	13.90	420,000	420,000	372,500	47,500
2001	30,200	14.30	432,000	432,000	384,000	48,000
2002	30,200	13.40	404,000	404,000	360,000	44,000

¹ Missing data not published to avoid disclosure of individual operations.

² Yield is based on total production.

³ Processed mostly canned, but includes small quantities dried and other uses not published separately to avoid disclosure of individual operations.

⁴ Processed mostly juice, but includes small quantities canned and other uses not published separately to avoid disclosure of individual operations.

**Pears: Price and Value by Type, State,
and United States, 2000-2002**¹

Type, State and Year	Price per Ton			Value of Production		
	Fresh	Processed Exc. Dried	All	Fresh	Processed Inc. Dried	All
	<i>Dollars</i>	<i>Dollars</i>	<i>Dollars</i>	<i>1,000 Dollars</i>	<i>1,000 Dollars</i>	<i>1,000 Dollars</i>
Bartlett ²						
CA						
2000	172.00	220.00	205.00	13,932	40,734	54,666
2001	430.00	232.00	287.00	28,810	39,963	68,773
2002	324.00	237.00	262.00	24,948	44,132	69,080
OR						
2000	455.00	144.00	297.00	13,195	4,320	17,515
2001	472.00	190.00	302.00	12,980	7,980	20,960
2002	513.00	231.00	343.00	11,799	8,085	19,884
WA						
2000	380.00	208.00	254.00	17,860	26,832	44,692
2001	435.00	149.00	219.00	21,315	22,648	43,963
2002	489.00	233.00	305.00	22,983	27,960	50,943
Total						
2000	287.00	209.00	233.00	44,987	71,886	116,873
2001	440.00	192.00	262.00	63,105	70,591	133,696
2002	406.00	235.00	286.00	59,730	80,177	139,907
Other ³						
CA						
2000			437.00			13,110
2001			313.00			9,390
2002			325.00			9,750
OR						
2000			305.00			48,734
2001			267.00			42,740
2002			344.00			48,120
WA						
2000			267.00			61,303
2001			316.00			76,400
2002			392.00			91,788
Total						
2000	325.00	47.20	293.00	120,907	2,240	123,147
2001	331.00	25.90	298.00	127,286	1,244	128,530
2002	412.00	28.40	370.00	148,410	1,248	149,658

¹ Missing data not published to avoid disclosure of individual operations.

² Processed mostly canned, but includes small quantities dried and other uses not published separately to avoid disclosure of individual operations.

³ Processed mostly juice, but includes small quantities canned and other uses not published separately to avoid disclosure of individual operations.

**Hawaii Crops: Acreage Harvested, Yield, Utilized
Production, and Utilization, 2000-2002**

Crop and Year	Acreage Harvested	Yield Per Acre	Utilized Production	Utilization	
				Fresh	Processed
	<i>Acres</i>	<i>1,000 Pounds</i>	<i>1,000 Pounds</i>	<i>1,000 Pounds</i>	<i>1,000 Pounds</i>
Bananas					
2000	1,460	19.9	29,000	29,000	
2001	1,490	18.8	28,000	28,000	
2002	1,250	15.2	19,000	19,000	
Guavas					
2000	680	23.4	15,900		15,900
2001	610	25.1	15,300		15,300
2002 ¹					
Papayas					
2000	1,650	33.0	54,500	50,250	4,250
2001	1,950	28.2	55,000	52,000	3,000
2002	1,700	26.8	45,500	42,500	3,000
	<i>Acres</i>	<i>1,000 Pounds</i>	<i>Tons</i>	<i>Tons</i>	<i>Tons</i>
Pineapples²					
2000	20,700		354,000	122,000	232,000
2001	20,100		323,000	110,000	213,000
2002	19,100		320,000	117,000	203,000

¹ Acreage, yield, and production estimates for 2002 will be published on May 12, 2003. Fresh and processed utilization estimates for 2002 will be published on July 8, 2003.

² Acreage is total acres in crop, not harvested acreage. Yield is not estimated. Production and processed utilization on a fresh weight basis.

Hawaii Crops: Price and Value, 2000-2002

Crop and Year	Price			Value of Production		
	Fresh	Processed	All	Fresh	Processed	Total
	<i>Dollars per Pound</i>	<i>Dollars per Pound</i>	<i>Dollars per Pound</i>	<i>1,000 Dollars</i>	<i>1,000 Dollars</i>	<i>1,000 Dollars</i>
Bananas						
2000	0.360		0.360	10,440		10,440
2001	0.380		0.380	10,640		10,640
2002	0.420		0.420	7,980		7,980
Guavas						
2000		0.129	0.129		2,051	2,051
2001		0.141	0.141		2,157	2,157
2002 ¹						
Papayas						
2000	0.316	0.030	0.294	15,879	128	16,007
2001	0.279	0.030	0.265	14,508	90	14,598
2002	0.275	0.030	0.259	11,688	90	11,778
	<i>Dollars per Ton</i>	<i>Dollars per Ton</i>	<i>Dollars per Ton</i>			
Pineapples ²						
2000	585.00	130.00	287.00	71,370	30,160	101,530
2001	626.00	129.00	298.00	68,860	27,477	96,337
2002	624.00	136.00	314.00	73,008	27,608	100,616

¹ Estimates for 2002 will be published on July 8, 2003.

² Processed price is for fresh fruit delivered to processing plant door. Fresh price is for fruit at wholesale establishments for local sales and at shippers dock for mainland and foreign sales.

**Apples: Unutilized Production by State
and United States, 2000-2002**

Crop and State	Unharvested Production			Harvested Not Sold		
	2000	2001	2002	2000	2001	2002
	<i>Million Pounds</i>	<i>Million Pounds</i>	<i>Million Pounds</i>	<i>Million Pounds</i>	<i>Million Pounds</i>	<i>Million Pounds</i>
Apples						
AZ	0.4	0.1		0.1		0.2
AR	3.7	1.0	0.9	0.1	0.2	0.2
CA	60.0	30.0				
CO	3.0		1.0			
CT	0.5	0.5				
GA	1.0	0.1	0.1			
ID					1.0	
IL	5.0	2.0	4.8	1.0	1.0	2.9
IN	1.2	7.0	7.0			
IA		0.9	3.3		0.2	
KS	1.7	1.0	0.9			
KY	0.7	1.1	1.5	0.2	0.2	0.1
ME	4.0	6.0	5.0		1.0	
MD	0.7	0.1	0.1			
MA	6.0	5.0	4.0	1.0		
MI	5.0	20.0			10.0	
MN	3.8	7.0	6.0	0.8	1.5	1.3
MO	3.5		1.0	0.5		1.0
NH	1.0	1.0		0.5	0.5	
NJ	2.0	4.9		2.0	0.1	
NM						0.2
NY	60.0	60.0	40.0			
NC	42.0	3.0	5.0	3.0	2.0	5.0
OH	7.0	2.0				
OR	5.0	1.0				
RI	0.1	0.4	0.3			
SC	3.5	3.9	1.3	0.5	0.1	0.7
TN	0.8	2.5	1.0	0.2		0.1
UT	6.0	6.0	2.0			
VT	3.0	3.0	3.0			
VA	6.0	4.0	7.0			
WV	2.0	10.0	5.0			
WI	8.0	9.0	5.5	5.0	4.0	0.5
US	246.6	192.5	105.7	14.9	21.8	12.2

**Miscellaneous Crops: Unutilized Production
by State and United States, 2000-2002**

Crop and State	Unharvested Production			Harvested Not Sold		
	2000	2001	2002	2000	2001	2002
	<i>Million Pounds</i>	<i>Million Pounds</i>	<i>Million Pounds</i>	<i>Million Pounds</i>	<i>Million Pounds</i>	<i>Million Pounds</i>
Peaches						
AL	1.0	0.9	0.6		0.1	1.4
AR	2.1	1.2	2.2	0.2	0.5	
CA						
Clingstone				47.0	50.0	50.0
CO	1.5			0.5	0.5	0.5
GA			2.0	5.0	15.0	6.0
ID					0.1	
IL	2.0	0.5	0.7	1.0	0.2	
IN	0.1	0.1	0.1			
LA			0.1	0.1	0.1	
MA		0.1	0.1			
MI	1.5			0.5		
NJ	3.0	2.0	5.0	4.0	3.0	
NY	0.7	0.5				
OH	1.3	0.2	0.3			
OK	1.2	1.4	1.1	0.3	0.3	0.1
OR	0.2	0.1	0.5			
PA	2.0	1.0	1.0			
SC	5.0	3.0	18.0	5.0	12.0	12.0
TN	0.2	0.1	0.2		0.1	0.1
TX	3.0	3.0	0.1	0.7	1.0	0.5
UT	0.6			0.4	0.1	
VA	1.0	1.0	0.3			
WV		0.2			0.1	
US	26.4	15.3	32.3	64.7	83.1	70.6
Cherries (Tart)						
CO	0.1					
MI					55.0	
NY					0.6	
OR	0.2	0.1	0.1			
PA	0.5					
UT	5.0	0.5	0.1	1.0		0.1
WA					6.0	
WI	0.2			0.1		
US	6.0	0.6	0.2	1.1	61.6	0.1
	<i>Barrels¹</i>	<i>Barrels¹</i>	<i>Barrels¹</i>	<i>Barrels¹</i>	<i>Barrels¹</i>	<i>Barrels¹</i>
Cranberries						
MA					2,000.0	
NJ				20,000.0	154,000.0	
OR		1,000.0		4,000.0	9,000.0	
WA	14,000.0	4,000.0	7,000.0	1,000.0	2,000.0	
WI				94,000.0	374,000.0	
US	14,000.0	5,000.0	7,000.0	119,000.0	541,000.0	

¹ A barrel weighs 100 pounds.

**Miscellaneous Crops: Unutilized Production
by State and United States, 2000-2002**

Crop and State	Unharvested Production			Harvested Not Sold		
	2000	2001	2002	2000	2001	2002
	<i>Tons</i>	<i>Tons</i>	<i>Tons</i>	<i>Tons</i>	<i>Tons</i>	<i>Tons</i>
Apricots						
CA	9,000	7,000	10,000			
UT	90	10	10	50	20	
US	9,090	7,010	10,010	50	20	
Cherries (Sweet)						
CA				1,300	4,200	1,800
ID				30	10	
MI			100			
MT	30	270	80	20	180	60
NY		50				
OR	1,000	6,000	2,000			
UT	100	50	20			
US	1,130	6,370	2,200	1,350	4,390	1,860
Grapes						
AR	300	200	200			
GA	150		40	150		
MI		400	200			
NY			1,000			
SC ¹	35			5		
TX ²		100	300		100	
VA ²					400	400
US	485	700	1,740	155	500	400
Kiwifruit						
CA				3,500	2,800	2,800
Pears						
CA	15,000	35,000				
CO	40					
MI		400			300	
NY	1,600	1,000	150			
OR	500	500		500		
PA	200	100	200		200	100
UT	40			100		
US	17,380	37,000	350	600	500	100
Prunes & Plums						
ID			50	150		
MI	150		10	150		
OR	1,000	1,200	800	500		
US	1,150	1,200	860	800		

¹ Estimates discontinued in 2001.

² Estimates began in 2001.

**Berries: Unutilized Production by State
and United States, 2000-2002**

Crop and State	Unharvested Production			Harvested Not Sold		
	2000	2001	2002	2000	2001	2002
	<i>1,000 Pounds</i>	<i>1,000 Pounds</i>	<i>1,000 Pounds</i>	<i>1,000 Pounds</i>	<i>1,000 Pounds</i>	<i>1,000 Pounds</i>
Red Raspberries WA	700	700		200	300	
Cultivated Blueberries						
AL	240	270	220	20		
AR	220	220	80	40	30	10
FL	500	300	200			
GA	1,000	1,000				
IN	100	100	100			
NJ	1,000	1,000	1,000			
NY	100	100	200		100	
NC	500	230	1,500		70	
OR		400				
WA		500			50	
US	3,660	4,120	3,300	60	250	10
Boysenberries OR		70	30			
Black Raspberries OR		140	100			
Loganberries OR		10	10			
Cultivated Blackberries (OR)						
Marion		700	600			
Evergreen		1,200	1,000			
Other		70				
All		1,970	1,600			

**Nut Crops: Bearing Acreage and Yield by Crop,
State, and United States, 2000-2002**

Crop and State	Bearing Acreage			Yield per Acre ¹		
	2000	2001	2002	2000	2001	2002
	<i>Acres</i>	<i>Acres</i>	<i>Acres</i>	<i>Tons (In-Shell Basis)</i>	<i>Tons (In-Shell Basis)</i>	<i>Tons (In-Shell Basis)</i>
Hazelnuts OR WA ²	28,300 350	28,100	27,800	0.79 0.57	1.76	0.65
US	28,650	28,100	27,800	0.79	1.76	0.65
Walnuts (English) CA	193,000	196,000	200,000	1.24	1.56	1.41
				<i>Pounds (In-Shell Basis)</i>	<i>Pounds (In-Shell Basis)</i>	<i>Pounds (In-Shell Basis)</i>
Macadamia Nuts HI	17,700	17,800	17,800	2,820	3,150	2,920
Pistachios CA	74,600	78,000	83,000	3,260	2,060	3,610
				<i>Pounds (Shelled Basis)</i>	<i>Pounds (Shelled Basis)</i>	<i>Pounds (Shelled Basis)</i>
Almonds CA	500,000	525,000	530,000	1,410	1,580	2,000

¹ Yield is based on utilized production.

² Estimates discontinued in 2001.

**Nut Crops: Production and Price by Crop,
State, and United States, 2000-2002**

Crop and State	Production			Price per Unit		
	2000	2001	2002	2000	2001	2002
	<i>Tons (In-Shell Basis)</i>	<i>Tons (In-Shell Basis)</i>	<i>Tons (In-Shell Basis)</i>	<i>Dollars per Ton</i>	<i>Dollars per Ton</i>	<i>Dollars per Ton</i>
Hazelnuts OR WA ¹	22,300 200	49,500	18,000	890.00 960.00	701.00	1,000.00
US	22,500	49,500	18,000	891.00	701.00	1,000.00
Walnuts ² (English) CA	239,000	305,000	282,000	1,240.00	1,120.00	
	1,000 Pounds					
	<i>(In-Shell Basis)</i>	<i>(In-Shell Basis)</i>	<i>(In-Shell Basis)</i>	<i>Dollars per Pound</i>	<i>Dollars per Pound</i>	<i>Dollars per Pound</i>
Macadamia Nuts HI	50,000	56,000	52,000	0.590	0.590	0.550
Pistachios CA	243,000	161,000	300,000	1.010	1.010	1.110
	1,000 Pounds					
	<i>(Shelled Basis)</i>	<i>(Shelled Basis)</i>	<i>(Shelled Basis)</i>			
Almonds ³ CA	703,000	830,000	1,060,000	0.97	0.91	1.01

¹ Estimates discontinued in 2001.

² Price estimates for 2002 will be published on July 8, 2003.

³ Price and value are based on the edible portion of the crop only. Production includes inedible quantities of no value as follows: 2000 - 15.9 million pounds, 2001 - 16.8 million pounds, and 2002 - 21.2 million pounds.

Nut Crops: Use by Crop, State, and United States, 2000-2002

Crop and State	Production					
	Sold In-Shell			Sold Shelled ¹		
	2000	2001	2002	2000	2001	2002
	<i>Tons</i>	<i>Tons</i>	<i>Tons</i>	<i>Tons</i>	<i>Tons</i>	<i>Tons</i>
Hazelnuts ²						
OR	13,800	32,500		8,500	17,000	
WA ³	125			75		
US	13,925	32,500		8,575	17,000	
Walnuts ²						
(English)						
CA	64,000	80,000		175,000	225,000	
	<i>1,000 Pounds</i>	<i>1,000 Pounds</i>	<i>1,000 Pounds</i>	<i>1,000 Pounds</i>	<i>1,000 Pounds</i>	<i>1,000 Pounds</i>
Pecans ²						
US	21,850	24,600		188,000	313,900	
	<i>Marketable In-Shell</i>	<i>Marketable In-Shell</i>	<i>Marketable In-Shell</i>	<i>Shelling Stock ¹</i>	<i>Shelling Stock ¹</i>	<i>Shelling Stock ¹</i>
Pistachios						
CA	190,000	126,500	240,000	53,000	34,500	60,000

¹ In-shell basis.

² Estimates for 2002 will be published on July 8, 2003.

³ Estimates discontinued in 2001.

**Nut Crops: Value and Meat Production by Crop,
State, and United States, 2000-2002**

Crop and State	Value of Utilized Production		
	2000	2001	2002
	<i>1,000 Dollars</i>	<i>1,000 Dollars</i>	<i>1,000 Dollars</i>
Hazelnuts			
OR	19,847	34,700	18,009
WA ¹	192		
US	20,039	34,700	18,009
Walnuts ² (English)			
CA	296,360	341,600	
Macadamia Nuts			
HI	29,500	33,040	28,600
Pistachios			
CA	245,430	162,610	333,000
Almonds ³			
CA	666,487	740,012	1,049,188
	Meat Production of Nuts Sold Shelled		
	2000	2001	2002
	<i>Tons</i>	<i>Tons</i>	<i>Tons</i>
Hazelnuts ²			
OR	3,410	6,800	
WA ¹	30		
US	3,440	6,800	
Walnuts ² (English)			
CA	75,000	95,000	
	<i>1,000 Pounds</i>	<i>1,000 Pounds</i>	<i>1,000 Pounds</i>
Pecans ²			
US	83,000	135,000	
Pistachios			
CA	24,900	17,300	29,400

¹ Estimates discontinued in 2001.

² Estimates for 2002 will be published on July 8, 2003.

³ Price and value are based on the edible portion of the crop only. Production includes inedible quantities of no value as follows:
2000 - 15.9 million pounds, 2001 - 16.8 million pounds and 2002 - 21.2 million pounds.

**Pecans: Utilized Production and Price by Variety,
State, and United States, 2000-2002**

Variety and State	Utilized Production			Price per Pound		
	2000	2001	2002	2000	2001	2002
	<i>1,000 Pounds</i>	<i>1,000 Pounds</i>	<i>1,000 Pounds</i>	<i>Dollars</i>	<i>Dollars</i>	<i>Dollars</i>
Improved Varieties ¹						
AL	10,000	10,000	6,500	0.900	0.580	0.580
AZ	14,500	21,000	16,000	1.310	0.460	1.220
AR	650	1,950	1,200	1.000	0.600	0.600
CA	3,400	3,700	3,600	1.520	0.810	1.200
FL	1,200	1,200	900	1.050	0.510	0.870
GA	65,000	85,000	42,000	1.230	0.660	1.020
LA	3,500	3,500	2,000	1.250	0.600	0.800
MS	2,500	3,000	2,200	0.970	0.650	0.800
NM	35,000	60,000	36,000	1.370	0.640	1.120
NC	1,400	2,700	1,500	1.150	0.650	1.000
OK	200	2,000	2,000	1.300	0.530	0.600
SC	1,200	2,500	800	1.110	0.640	0.960
TX	22,000	50,000	25,000	1.300	0.800	1.150
US	160,550	246,550	139,700	1.260	0.662	1.060
Native and Seedling						
AL	5,000	5,000	500	0.600	0.360	0.540
AR	250	650	500	0.750	0.400	0.500
FL	2,100	2,100	600	0.600	0.420	0.500
GA	15,000	25,000	3,000	0.980	0.450	0.671
KS	550	2,200	1,700	0.830	0.400	0.750
LA	14,500	10,500	4,000	0.600	0.350	0.500
MS	1,000	1,500	800	0.520	0.450	0.500
NC	200	500	400	0.800	0.450	0.650
OK	2,300	18,000	12,000	0.800	0.420	0.500
SC	400	1,500	200	0.920	0.460	0.650
TX	8,000	25,000	15,000	0.750	0.400	0.570
US	49,300	91,950	38,700	0.754	0.412	0.554
All Pecans						
AL	15,000	15,000	7,000	0.800	0.507	0.577
AZ	14,500	21,000	16,000	1.310	0.460	1.220
AR	900	2,600	1,700	0.931	0.550	0.571
CA	3,400	3,700	3,600	1.520	0.810	1.200
FL	3,300	3,300	1,500	0.764	0.453	0.722
GA	80,000	110,000	45,000	1.180	0.612	1.000
KS	550	2,200	1,700	0.831	0.400	0.750
LA	18,000	14,000	6,000	0.726	0.413	0.600
MS	3,500	4,500	3,000	0.841	0.583	0.720
NM	35,000	60,000	36,000	1.370	0.640	1.120
NC	1,600	3,200	1,900	1.110	0.619	0.926
OK	2,500	20,000	14,000	0.840	0.431	0.514
SC	1,600	4,000	1,000	1.060	0.573	0.898
TX	30,000	75,000	40,000	1.150	0.667	0.933
US	209,850	338,500	178,400	1.140	0.594	0.949

¹ Budded, grafted, or topworked varieties.

**Pecans: Value of Production by Variety,
State, and United States, 2000-2002**

Variety and State	Value of Production		
	2000 <i>1,000 Dollars</i>	2001 <i>1,000 Dollars</i>	2002 <i>1,000 Dollars</i>
Improved Varieties ¹			
AL	9,000	5,800	3,770
AZ	18,995	9,660	19,520
AR	650	1,170	720
CA	5,168	2,997	4,320
FL	1,260	612	783
GA	79,950	56,100	42,840
LA	4,375	2,100	1,600
MS	2,425	1,950	1,760
NM	47,950	38,400	40,320
NC	1,610	1,755	1,500
OK	260	1,060	1,200
SC	1,332	1,600	768
TX	28,600	40,000	28,750
US	201,575	163,204	147,851
Native and Seedling			
AL	3,000	1,800	270
AR	188	260	250
FL	1,260	882	300
GA	14,700	11,250	2,013
KS	457	880	1,275
LA	8,700	3,675	2,000
MS	520	675	400
NC	160	225	260
OK	1,840	7,560	6,000
SC	368	690	130
TX	6,000	10,000	8,550
US	37,193	37,897	21,448
All Pecans			
AL	12,000	7,600	4,040
AZ	18,995	9,660	19,520
AR	838	1,430	970
CA	5,168	2,997	4,320
FL	2,520	1,494	1,083
GA	94,650	67,350	44,853
KS	457	880	1,275
LA	13,075	5,775	3,600
MS	2,945	2,625	2,160
NM	47,950	38,400	40,320
NC	1,770	1,980	1,760
OK	2,100	8,620	7,200
SC	1,700	2,290	898
TX	34,600	50,000	37,300
US	238,768	201,101	169,299

¹ Budded, grafted, or topworked varieties.

Definition of Terms

Apples, Commercial Crop refers to orchards of 100 or more bearing age trees.

Bearing Acreage - An orchard, grove, or vineyard is considered bearing when it reaches an age when it can normally be expected to produce a commercially significant quantity of the crop. Bearing age is a function of many factors including variety, rootstock, year planted, etc. Bearing acreage is primarily based upon periodic orchard surveys. In non-survey years, bearing acreage is based on trends, county extension service data, end-of-year production surveys, and other indications.

Prices are a marketing year average for all methods of sale. For a crop sold for both fresh market and processing, the **Marketing Year Average Price (MYA)** is a weighted average of the fresh and processing price.

Prices for fresh fruit are the average prices producers receive at the point of first sale. This is commonly referred to as the **average price as sold**. Since the point of first sale is not the same for all producers, prices for the various methods of sale are weighted by the proportionate quantity sold. For example, if in a given State part of the fruit is sold F.O.B. packed by growers, part is sold as bulk fruit at the packinghouse door, and some is sold retail at roadside stands, the fresh fruit **average price as sold** is a weighted average of the average price for each method of sale. The exception is fresh fruit sales in California, Washington, and New York (apples only) which are equivalent returns at packinghouse door. The equivalent packinghouse returns represent adjusted prices.

F.O.B. packed prices are adjusted to an equivalent incoming packinghouse door price by subtracting all costs that accumulate between the incoming packinghouse door and the F.O.B. price. These costs include grading, packing, inspecting fees, selling, and other costs.

Prices for fruit sold for processing are equivalent returns for fruit delivered to the processing plant door except for cranberries, California olives, and clingstone peaches which are priced at the first delivery point.

Crop value estimates in this report cover the marketing season or crop year and should not be confused with cash receipts from these crops which are on a calendar year.

Total Production is the quantity actually harvested plus quantities which would have been acceptable for fresh market or processing but were not harvested because of economic or natural reasons.

Unutilized Production is the difference between total and utilized production which is fruit not harvested for economic or natural reasons and harvested fruit not sold or utilized.

Harvested not sold is fruit of marketable quality that was picked but not sold for various reasons. Harvested not sold amounts up to 2 percent of total production are considered normal seasonal losses and are excluded from total production.

Unharvested Production is marketable fruit produced, but not harvested for various reasons. Unharvested amounts up to 2 percent of total production are considered normal seasonal losses and are excluded from total production.

Utilization refers to first utilization, not necessarily final utilization. For example, frozen fruit includes some fruit that may be later used for making preserves. Grade-outs for fresh market fruit which are processed are included in the processing quantity. Fruit graded-out from canning or freezing and utilized for juice is included with juice.

Utilized Production is the amount sold plus the quantities used at home or held in storage.

Yield per Acre is based on total production which includes unharvested production and fruit harvested but not sold due to marketing conditions.

State Value of Utilized Production and MYA Price Computations

The following procedure is used to compute State Values of Utilized Production and MYA Prices:

Fresh Market Value = Fresh Market MYA
 Times
 Fresh Market Utilization

Process Market Value = Process Market MYA
 Times
 Process Market Utilization

"All" Sales Value = Fresh Market Value
 Plus
 Process Market Value

"All" Sales MYA = "All" Sales Value
 Divided By
 "All" Sales Utilization

For commodities with components not identified by market channel, substitute breakdown name for fresh/processing market and use the same procedure.

U.S. MYA Price Computations

The following procedure is used to compute the U.S. MYA Prices:

Fresh Market MYA = Fresh Market Value For All States
 Divided By
 Fresh Market Utilization For All States

Process Market MYA = Process Market Value For All States
 Divided By
 Process Market Utilization For All States

"All" Sales MYA = Sales Value For All States
 Divided By
 Sales Utilization For All States

Marketing Seasons for Noncitrus Fruits ¹

Apples:

All South Atlantic States, plus AR, CA, IL, IN, KY, MO, NM, TN June - May
OR, WA August - July
All other States July - June

Apricots:

Fresh Fruit May 25 - August 20
Canning June 15 - August 15
Dried (CA) June 20 - August 20

Avocados:

CA November 1 through November 30 the following year
FL June 20 - February 28
HI January 1 - December 31 (peak harvest March 1 - April 30)

Bananas: January 1 - December 31

Cherries, Sweet: May 1 - August 15

Cherries, Tart: June 15 - August 20

Cranberries: September 5 - December 20

Dates: August 15 - March 15

Figs:

Fresh Fruit June 5 - October 31
Canning August 1 - October 15
Dried (CA) June 20 - October 31

Grapes:

Fresh (CA) May 25 - April 30
Fresh (AZ) June 5 - July 15
Fresh (All other States) July 10 - October 31
Crushed for Juice, Wine, or Brandy August 1 - December 15
Dried for Raisins (CA) September 1 - May 31

Guavas: January 1 - December 31 (peak harvest September 1 - October 31)

Kiwifruit: November 1 - April 30

Nectarines: June 10 - August 31

¹See footnote on next page.

Marketing Seasons for Noncitrus Fruits ¹ (continued)

Olives:	September 25 - March 15
Papayas:	January 1 - December 31
Peaches:	
Fresh (GA and SC)	May 20 - August 31
Fresh (Other South Atlantic States, South Central States, CA)	June 1 - September 30
Fresh (New England States, ID, MI, NY)	August 1 - September 30
Fresh (All other States)	July 1 - September 30
Canning (CA)	July 1 - September 10
Dried (CA)	August 1 - October 10
Pears:	
Fresh (CA)	July 1 - April 30
Fresh (WA and OR)	August 10 - May 31
Fresh (Other States)	July 1 - December 15
Canning and Dried (CA, OR, WA)	August 1 - November 30
Pineapples:	January 1 - December 31 (peak harvest March 1 - July 31)
Plums:	
Fresh (CA)	May 25 - September 30
Canning (CA)	June 1 - September 30
Prunes, Dried (CA):	August 1 - April 30
Prune and Plums:	
Fresh and Canning (ID, MI, OR, WA)	August 10 - October 20

Marketing Seasons for Tree Nuts ¹

Almonds:	August 5 - November 15
Hazelnuts (Filberts):	October 1 - September 30
Macadamia Nuts:	January 1 - December 31 (peak harvest August 1 - December 31)
Pecans:	September 30 - March 15
Pistachios:	September 1 - October 31
Walnuts:	September 15 - December 31

¹For detail by States, see Agricultural Handbook No. 186, "Fruits and Tree Nuts, Blooming, Harvesting, and Marketing Dates", Dec 1975.

Information Contacts

Listed below are the commodity specialists in the Crops Branch of the National Agricultural Statistics Service to contact for additional information.

Mark Harris, Chief	(202) 720-2127
Field Crops Section	
Greg Thessen, Head	(202) 720-2127
Dave DeWalt - Cotton, Cotton Ginnings	(202) 720-5944
Herman Ellison - Soybeans, Minor Oilseeds	(202) 720-7369
Lance Honig - Wheat, Rye	(202) 720-8068
Darin Jantzi - Corn, Proso Millet	(202) 720-9526
Troy Joshua - Hay, Oats	(202) 690-3234
Roy Karkosh - Barley, Sorghum, Sugar Crops	(202) 720-8140
Mark E. Miller - Weekly Crop Weather	(202) 720-7621
Mark R. Miller - Peanuts, Rice	(202) 720-7688
Fruit, Vegetable & Special Crops Section	
Jim Smith, Head	(202) 720-2127
Arvin Budge - Dry Beans, Potatoes, Sweet Potatoes	(202) 720-4285
Kathy Broussard - Citrus, Tropical Fruits	(202) 720-5412
Debbie Flippin - Austrian Winter Peas, Dry Edible Peas, Lentils, Mint, Mushrooms, Peaches, Pears, Wrinkled Seed Peas	(202) 720-3250
Mike Miller - Berries, Grapes, Maple Syrup, Tobacco	(202) 720-7235
Terry O'Connor - Apples, Cherries, Cranberries, Plums, Prunes	(202) 720-4288
Kim Ritchie - Hops	(360) 902-1940
Betty Johnston - Floriculture, Nursery, Nuts	(202) 720-4215
Biz Wallingsford - Fresh and Processing Vegetables, Onions, Strawberries	(202) 720-2157

The next "Noncitrus Fruits and Nuts 2002 Summary" report will be released at 3 p.m. ET on July 8, 2003.

The United States Department of Agriculture (USDA) prohibits discrimination in all its programs on the basis of race, color, national origin, gender, religion, age, disability, political beliefs, sexual orientation, and marital or family status. (Not all prohibited bases apply to all programs.) Persons with disabilities who require alternative means for communication of program information (braille, large print, audiotape, etc.) should contact the USDA's TARGET Center at 202-720-2600 (voice and TDD).

To file a complaint of discrimination, write USDA, Director, Office of Civil Rights, Room 326-W, Whitten Building, 1400 Independence Avenue, SW, Washington, D.C., 20250-9410, or call 202-720-5964 (voice or TDD). USDA is an equal opportunity provider and employer.

ACCESS TO REPORTS!!

For your convenience, there are several ways to obtain NASS reports, data products, and services:

INTERNET ACCESS

All NASS reports are available free of charge on the worldwide Internet. For access, connect to the Internet and go to the NASS Home Page at: <http://www.usda.gov/nass/>. Select "Today's Reports" or Publications and then Reports Calendar or Publications and then Search, by Title or Subject.

E-MAIL SUBSCRIPTION

All NASS reports are available by subscription free of charge direct to your e-mail address. Starting with the NASS Home Page at <http://www.usda.gov/nass/>, click on **Publications**, then click on the **Subscribe by E-mail** button which takes you to the page describing e-mail delivery of reports. Finally, click on **Go to the Subscription Page** and follow the instructions.

AUTOFAX ACCESS

NASSFax service is available for some reports from your fax machine. Please call 202-720-2000, using the handset attached to your fax. Respond to the voice prompts. Document 0411 is a list of available reports.

PRINTED REPORTS OR DATA PRODUCTS

CALL OUR TOLL-FREE ORDER DESK: 800-999-6779 (U.S. and Canada)
Other areas, please call 703-605-6220 FAX: 703-605-6900
(Visa, MasterCard, check, or money order acceptable for payment.)

ASSISTANCE

For **assistance** with general agricultural statistics or further information about NASS or its products or services, contact the **Agricultural Statistics Hotline** at **800-727-9540**, 7:30 a.m. to 4:00 p.m. ET, or e-mail: nass@nass.usda.gov.

Competing in the 21st Century

Agricultural Outlook Forum 2003



February 20-21, 2003
Crystal Gateway
Marriott Hotel
Arlington, Virginia

- ◆ 2003 Commodity Prospects
- ◆ Emerging Export Competitors
- ◆ Farming under New Programs
- ◆ Coping with Regulations
- ◆ Shifting consumer Preferences
- ◆ Ensuring Food Safety
- ◆ Impact of El Nino

Sharpen your strategic focus at USDA's 79th annual Agricultural Outlook Forum. Note experts, industry leaders and producers will discuss many facets of competing in domestic and world markets.

The program will examine growing competition from Central and Eastern Europe, Brazil and Asia, as well as progress in WTO negotiations.

Focus sessions will highlight many challenges producers face in the competitive arena, ranging from the growing complexity and cost of regulation, to dealing with food safety and changing eating habits.

As always, leading analysts will be on hand to debate planting, trade and price prospects for farm commodities for the year ahead. Attendees will receive new 10-year commodity projections from USDA.

Networking opportunities abound at the Forum, which attracted 1,400 attendees last February. Register now for the best value. See full details at www.usda.gov/oce.

www.usda.gov/oce agforum@oce.usda.gov (877) 891-2208 toll free