



United States
Department of
Agriculture

National
Agricultural
Statistics
Service



Noncitrus Fruits and Nuts 2003 Preliminary Summary

January 2004

Fr Nt 1-3 (04)

USDA



Contents

	Page
Noncitrus Fruits and Tree Nuts	
Bearing Acreage, U.S	7
Bearing Acreage and Yield per Acre by Crop	4
Narrative	3
Price and Value by Crop	6
Production Utilization, U.S.	7
Total and Utilized Production by Crop.	5
Noncitrus Fruits	
Apples, Commercial Crop	10, 66
Apricots	20, 26, 27, 68
Avocados	20
Bananas	64
Berries (excluding strawberries)	32, 69
California Dry Fruits	27
Cherries, Sweet	38, 42, 68
Cherries, Tart	40, 42, 67
Cranberries	44, 67
Dates	20
Figs	22, 26, 27
Grapes	27, 46, 68
Guavas	64
Hawaii Crops	64
Kiwifruit	22, 68
Nectarines	22
Olives	22, 26
Papayas	64
Peaches	27, 52, 67
Pears	27, 60, 68
Pineapples	64
Plums	22
Prunes (dried basis)	24, 27
Prunes and Plums	24, 26, 68
Strawberries	28
Unutilized Production	66
Tree Nuts	
Almonds	70
Hazelnuts	70
Macadamia Nuts	70
Pecans	72, 74
Pistachios	70
Walnuts	70
Definition of Terms	76
Information Contacts	80
Marketing Seasons	78
State Value of Utilized Production Computation	77
U.S. MYA Price Computation	77

This page intentionally left blank.

2003 Noncitrus Fruit Utilized Production Down 4 Percent, Value Up 3 Percent

In 2003, the Nation's utilized production of the leading noncitrus fruit crops totaled 16.5 million tons, down 4 percent from the 2002 utilized production. Utilized production increased from 2002 for apples, apricots, bananas, wild blueberries, California raspberries, sweet cherries, tart cherries, cranberries, olives, pears, California plums, California prunes, prunes & plums, and strawberries.

The value of utilized production for noncitrus fruit crops totaled 8.35 billion dollars, up 3 percent from 2002. The value of apples and strawberries increased 10 percent and 14 percent, respectively, from the previous year. However, the value of grapes decreased 11 percent and peaches lost 7 percent from 2002.

Highlights

Utilized apple production for 2003 is estimated at 8.90 billion pounds, up 6 percent from the 2002 level. Utilized production for Michigan and New York increased 86 percent and 84 percent, respectively, while Washington's utilized production decreased 12 percent compared to the 2002 crop. In Washington, poor weather during pollination led to spotty bloom in some orchards. In Michigan and New York, excellent growing conditions allowed production to rebound from the short 2002 crop. Improved growing conditions in Ohio, Pennsylvania, and Virginia increased utilized production from the 2002 weather reduced crops.

Utilized grape production for 2003 totaled 6.32 million tons, down 14 percent from the 2002 crop. The California crop, which accounts for 89 percent of the 2003 U.S. utilized grape production, is down 16 percent from the previous year. Also for California, wine type production decreased 8 percent from 2002, raisin type production dropped 26 percent, and table type production was down 14 percent. Utilized production increased from 2002 in Georgia, Michigan, New York, North Carolina, Ohio, Oregon, Pennsylvania, Texas, and Washington.

Utilized peach production in 2003 is estimated at 2.41 billion pounds, 2 percent below the previous year but 3 percent above 2001. The California crop, accounting for 75 percent of the U.S. utilized peach production, is down 3 percent from 2002. For California, the Clingstone peach estimate is down 6 percent but the Freestone estimate is virtually unchanged from 2002.

Utilized pear production for 2003, at 921,450 tons, is up 6 percent from the previous year. Washington, the top producing State, utilized 446,000 tons, 15 percent above 2002. California, at 231,000 tons and the second largest producer, is down 12 percent from the previous season. Utilized pear production in Oregon, the third largest State, is 216,000 tons, up 9 percent from 2002.

U.S. Nut Production Down 4 Percent, Value Up 9 Percent

The 2003 U.S. nut production (in-shell basis) is 1.39 million tons, a 4 percent decrease from a year earlier. Almond production totaled 817 thousand tons, down 7 percent from 2002. The pistachio crop totaled 58.0 thousand tons, a decrease of 62 percent from the record high crop of 152 thousand tons realized in 2002. Hazelnut production, at 35.0 thousand tons, is up 79 percent from 2002. Walnut production for 2003 is estimated at 325 thousand tons, 15 percent above the previous year. Macadamia production, at 25.5 thousand tons, is down 4 percent from 2002. Pecan production for 2003 is estimated at 131 thousand tons, a 52 percent increase from 2002.

The 2003 U.S. value of utilized nut production is estimated at 2.23 billion dollars, up 9 percent from 2002. The 2003 almond value, estimated at 1.42 billion dollars, is up 18 percent from 2002. Pistachio value for 2003, at 133 million dollars, is down 60 percent from the 2002 value. Hazelnut value at 36.8 million dollars is an increase of 88 percent over the 2002 value. The pecan crop showed a 59 percent increase in value to 263 million dollars. The macadamia value, at 30.1 million dollars, is virtually unchanged from the previous year.

**Noncitrus Fruits and Nuts: Bearing Acreage and Yield per Acre
by Crop, United States, 2001-2003**

Crop	Bearing Acreage			Yield per Acre		
	2001	2002	2003	2001	2002	2003
	<i>Acres</i>	<i>Acres</i>	<i>Acres</i>	<i>Tons</i>	<i>Tons</i>	<i>Tons</i>
Noncitrus Fruits						
Apples	418,050	401,700	395,350	11.30	10.60	11.40
Apricots	19,430	18,430	17,930	4.24	4.89	5.46
Avocados ¹	64,130	64,650		3.48	3.15	
Bananas (HI) ²	1,490	1,300	1,400	9.40	7.50	7.85
Blackberries (OR) ^{2 3}	6,420	6,900	6,700	3.27	3.59	3.38
Blueberries						
Cultivated ²	39,880	41,180	40,970	2.37	2.30	2.29
Wild (ME) ⁴						
Boysenberries ²	1,610	1,410	1,300	1.87	1.88	1.81
Loganberries (OR) ²	70	60	60	0.79	2.17	1.84
Raspberries ²						
Black (OR)	1,200	1,100	1,100	1.59	1.33	1.18
Red	12,200	11,800	11,500	3.73	3.58	3.31
All (CA)	2,300	2,400	2,500	5.45	6.10	6.20
Cherries, Sweet	68,270	73,920	75,890	3.37	2.45	3.12
Cherries, Tart	39,140	38,300	37,300	4.73	0.82	3.04
Cranberries	34,200	37,900	39,400	7.79	7.50	7.76
Dates (CA)	5,200	5,000	4,800	3.79	4.84	4.04
Figs (CA)	14,000	13,500	13,000	2.93	3.94	3.58
Grapes	930,370	948,650	953,100	7.06	7.74	6.80
Guavas (HI) ^{2 5}	610	550		12.60	8.80	
Kiwifruit (CA)	4,900	4,500	4,500	5.27	5.80	5.27
Nectarines (CA)	36,500	36,500	36,500	7.53	8.22	7.62
Olives (CA)	36,000	36,000	36,000	3.72	2.86	3.28
Papayas (HI) ²	1,950	1,720	1,600	14.10	13.40	13.50
Peaches	151,650	153,170	150,170	8.00	8.40	8.40
Pears	64,030	63,615	63,150	15.60	13.70	14.60
Pineapples (HI) ⁶	20,100	19,100	16,000			
Plums (CA)	37,000	36,000	36,000	5.68	5.58	5.89
Prunes (CA)	86,000	74,000	72,000	4.88	7.02	7.93
Prunes & Plums ⁷	4,210	4,210	4,210	5.04	3.72	4.01
Strawberries ²	46,000	47,900	48,700	18.00	19.70	21.40
Total	2,146,910	2,145,465	2,071,130			
Tree Nuts						
Almonds (CA) ⁸	525,000	530,000	530,000	1.28	1.66	1.54
Hazelnuts	28,100	30,000	30,000	1.76	0.65	1.17
Macadamias (HI)	17,800	17,800	17,800	1.58	1.49	1.44
Pecans ⁴						
Pistachios	78,000	83,000	88,000	1.03	1.83	0.66
Walnuts (CA)	196,000	200,000	205,000	1.56	1.41	1.59
Total	844,900	860,800	870,800			

¹ Estimates for 2003 will be published on July 7, 2004.

² Harvested acreage. Yield based on utilized production.

³ Cultivated.

⁴ Bearing acreage and yield not calculated.

⁵ Estimates for 2003 will be published on May 12, 2004.

⁶ Acreage is total acres in crop, not harvested acreage. Yield is not estimated.

⁷ ID, MI, OR, and WA.

⁸ Yield based on in-shell basis. Shelling ratios are 2001 - 0.618; 2002 - 0.618; 2003 - 0.624.

**Noncitrus Fruits and Nuts: Total and Utilized Production
by Crop, United States, 2001-2003**

Crop	Total Production			Utilized Production		
	2001	2002	2003	2001	2002	2003
	<i>1,000 Tons Fresh Equivalent</i>	<i>1,000 Tons Fresh Equivalent</i>	<i>1,000 Tons Fresh Equivalent</i>	<i>1,000 Tons Fresh Equivalent</i>	<i>1,000 Tons Fresh Equivalent</i>	<i>1,000 Tons Fresh Equivalent</i>
Noncitrus Fruits						
Apples	4,714.4	4,262.7	4,507.3	4,607.2	4,187.5	4,448.8
Apricots	82.5	90.0	97.9	75.4	80.0	97.9
Avocados ¹	223.3	203.4		223.3	203.4	
Bananas (HI) ²				14.0	9.8	11.0
Blackberries (OR) ³	22.0	25.3	23.0	21.0	24.8	22.7
Blueberries						
Cultivated	96.6	96.1	94.8	94.4	94.4	93.9
Wild (ME)	37.6	31.2	40.1	37.6	31.2	40.1
Boysenberries	3.0	2.7	2.4	3.0	2.7	2.4
Loganberries (OR)	0.1	0.1	0.1	0.1	0.1	0.1
Raspberries						
Black (OR)	2.0	1.5	1.4	1.9	1.5	1.3
Red	46.0	42.2	38.3	45.5	42.2	38.0
All (CA)	12.5	14.6	15.5	12.5	14.6	15.5
Cherries, Sweet	230.4	181.2	237.0	219.6	177.2	234.6
Cherries, Tart	185.0	31.3	113.3	154.0	31.1	113.3
Cranberries	266.5	284.2	305.5	239.2	283.9	305.5
Dates (CA)	19.7	24.2	19.4	19.7	24.2	19.4
Figs (CA)	41.0	53.2	46.5	41.0	53.2	46.5
Grapes	6,569.6	7,339.0	6,477.9	6,568.4	7,336.9	6,323.7
Guavas (HI) ^{2 4}				7.7	4.9	
Kiwifruit (CA)	25.8	26.1	23.7	23.0	23.1	20.9
Nectarines (CA)	275.0	300.0	278.0	275.0	300.0	278.0
Olives (CA)	134.0	103.0	118.0	134.0	103.0	118.0
Papayas (HI) ²				27.5	23.0	21.5
Peaches	1,216.6	1,287.5	1,261.6	1,167.5	1,235.7	1,206.9
Pears	1,001.8	868.5	923.1	964.3	867.0	921.5
Pineapples (HI) ²				323.0	320.0	315.0
Plums (CA)	210.0	201.0	212.0	210.0	201.0	212.0
Prunes (CA)	420.0	519.2	570.6	378.0	492.0	522.0
Prunes & Plums ⁵	21.2	15.7	16.9	20.0	14.8	15.5
Strawberries ²				826.2	942.8	1,041.4
Total				16,734.0	17,126.0	16,487.4
	<i>1,000 Tons In-Shell Equivalent</i>	<i>1,000 Tons In-Shell Equivalent</i>	<i>1,000 Tons In-Shell Equivalent</i>	<i>1,000 Tons In-Shell Equivalent</i>	<i>1,000 Tons In-Shell Equivalent</i>	<i>1,000 Tons In-Shell Equivalent</i>
Tree Nuts ²						
Almonds (CA)				671.5	881.9	817.3
Hazelnuts				49.5	19.5	35.0
Macadamias (HI)				28.0	26.5	25.5
Pecans				169.3	86.5	131.1
Pistachios (CA)				80.5	151.5	58.0
Walnuts (CA)				305.0	282.0	325.0
Total				1,303.8	1,447.9	1,391.9

¹ Estimates for 2003 will be published on July 7, 2004.

² Only utilized production estimated.

³ Cultivated.

⁴ Estimates for 2003 will be published on May 12, 2004.

⁵ ID, MI, OR, and WA.

**Noncitrus Fruits and Nuts: Price and Value
by Crop, United States, 2001-2003**

Crop	Unit ¹	Price			Value of Utilized Production		
		2001	2002	2003	2001	2002	2003
		<i>Dollars</i>	<i>Dollars</i>	<i>Dollars</i>	<i>1,000 Dollars</i>	<i>1,000 Dollars</i>	<i>1,000 Dollars</i>
Noncitrus Fruits							
Apples	Lb	0.158	0.188	0.194	1,453,073	1,572,202	1,729,949
Apricots	Ton	353.00	357.00	355.00	26,598	28,565	34,729
Avocados ²	Ton	1,670.00	1,920.00		373,890	390,868	
Bananas (HI)	Lb	0.380	0.430	0.420	10,640	8,385	9,240
Blackberries (OR) ³	Lb	0.415	0.442	0.694	17,431	21,871	31,439
Blueberries							
Cultivated	Lb	0.867	1.030	1.180	163,763	194,132	220,750
Wild (ME)	Lb	0.305	0.286	0.355	22,945	17,860	28,470
Boysenberries	Lb	0.689	0.657	0.862	4,133	3,482	4,053
Loganberries (OR)	Lb	0.455	0.808	0.968	50	210	213
Raspberries							
Black (OR)	Lb	0.452	0.411	1.360	1,724	1,199	3,540
Red	Lb	0.505	0.527	0.577	45,940	44,477	43,816
All (CA)	Lb	1.660	1.400	2.080	41,500	40,851	64,480
Cherries							
Sweet	Ton	1,230.00	1,550.00	1,390.00	270,914	274,180	326,799
Tart	Lb	0.186	0.448	0.371	57,150	27,879	83,922
Cranberries	Bbl	23.80	30.20	31.80	113,646	171,303	194,004
Dates (CA)	Ton	1,360.00	1,550.00	1,430.00	26,792	37,510	27,742
Figs (CA)	Ton	366.00	329.00	475.00	15,012	17,526	22,076
Grapes	Ton	449.00	387.00	401.00	2,948,028	2,841,993	2,534,264
Guavas (HI) ²	Lb	0.141	0.150		2,157	1,455	
Kiwifruit (CA) ²	Ton	667.00	783.00		15,340	18,097	
Nectarines (CA)	Ton	464.00	382.00	436.00	127,642	114,600	121,208
Olives (CA)	Ton	672.00	573.00	426.00	90,096	58,983	50,305
Papayas (HI)	Lb	0.265	0.260	0.314	14,598	11,924	13,491
Peaches	Lb	0.211	0.204	0.193	493,298	503,827	466,681
Pears	Ton	264.00	295.00	306.00	254,161	255,605	282,073
Pineapples (HI)	Ton	298.00	314.00	327.00	96,337	100,616	102,849
Plums (CA)	Ton	306.00	386.00	418.00	64,362	77,586	88,616
Prunes (CA)	Ton	726.00	810.00	730.00	98,010	132,030	117,530
Prunes & Plums ⁴							
Plums ⁴	Ton	273.00	286.00	351.00	5,459	4,237	5,434
Strawberries	Cwt	64.80	61.70	63.90	1,070,052	1,162,994	1,329,779
Total ⁵					7,924,741	8,136,447	8,346,140
Almonds (CA) (Shelled)							
Almonds (CA) (Shelled)	Lb	0.910	1.110	1.420	740,012	1,200,687	1,419,432
Hazelnuts (OR)	Ton	701.00	1,000.00	1,050.00	34,700	19,500	36,750
Macadamias (HI)	Lb	0.590	0.570	0.590	33,040	30,210	30,090
Pecans	Lb	0.594	0.955	1.000	201,101	165,033	263,211
Pistachios (CA)	Lb	1.010	1.100	1.150	162,610	333,300	133,400
Walnuts (CA) ²	Ton	1,120.00	1,080.00		341,600	304,560	
Total ⁵					1,513,063	2,053,290	2,233,883

¹ Ton refers to the 2,000 lb. short ton.

² Estimates for 2003 will be published on July 7, 2004.

³ Cultivated.

⁴ ID, MI, OR, and WA.

⁵ Includes estimated 2003 value of production for crops noted by footnote 2. Used 2002 price to compute the 2003 value.

**Fruits and Nuts: Bearing Acreage,
United States, 2001-2003**

Year	Citrus Fruits ¹	Major Deciduous Fruits ²	Miscellaneous Noncitrus ³	Nuts ⁴	Total
	<i>Acres</i>	<i>Acres</i>	<i>Acres</i>	<i>Acres</i>	<i>Acres</i>
2001	1,082,000	1,854,650	292,260	844,900	4,073,810
2002	1,050,700	1,848,495	296,970	860,800	4,056,965
2003 ⁵	1,035,200	1,841,600	229,530	870,800	3,977,130

¹ Grapefruit, K-Early Citrus, lemons, limes, oranges, tangelos, tangerines, and Temples. Beginning in 2003, does not include K Early Citrus, limes, or Robinson and Dancy tangerines.

² Commercial apples, apricots, cherries, grapes, nectarines, peaches, pears, plums, and prunes.

³ Avocados, bananas, berries, cranberries, dates, figs, guavas, kiwifruit, olives, papayas, pineapples, and strawberries.

⁴ Almonds, hazelnuts, macadamia nuts, pistachios, and walnuts.

⁵ Preliminary. Avocados and guavas not included.

**Noncitrus Fruits: Production Utilization,
United States, 2001-2003 ¹**

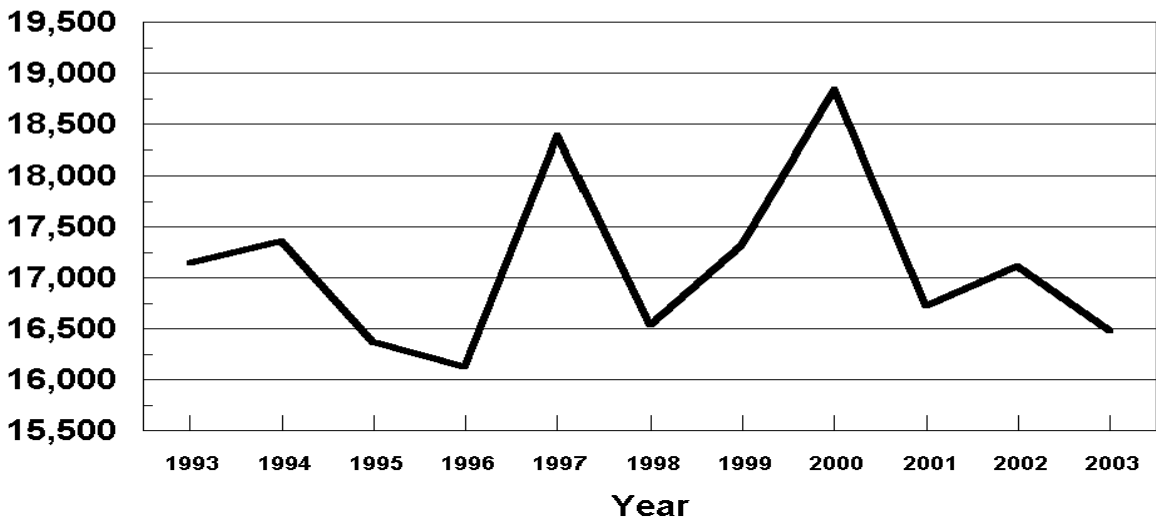
Year	Utilized Production	Fresh	Processed ²					
			Canned	Dried	Juice	Frozen	Wine	Other
	<i>1,000 Tons</i>	<i>1,000 Tons</i>	<i>1,000 Tons</i>	<i>1,000 Tons</i>	<i>1,000 Tons</i>	<i>1,000 Tons</i>	<i>1,000 Tons</i>	<i>1,000 Tons</i>
2001	16,734.0	6,477.3	1,859.6	2,289.5	1,462.4	668.7	3,568.6	168.7
2002	17,126.0	6,550.0	1,727.7	2,581.8	1,251.5	593.9	3,998.9	138.3
2003	16,487.4							

¹ 2003 is preliminary. Avocados and guavas not included. Fresh and processed tons will be published on July 7, 2004. Cranberry quantity included in utilized production, excluded from fresh and processed breakdown.

² Processed strawberries are included in frozen.

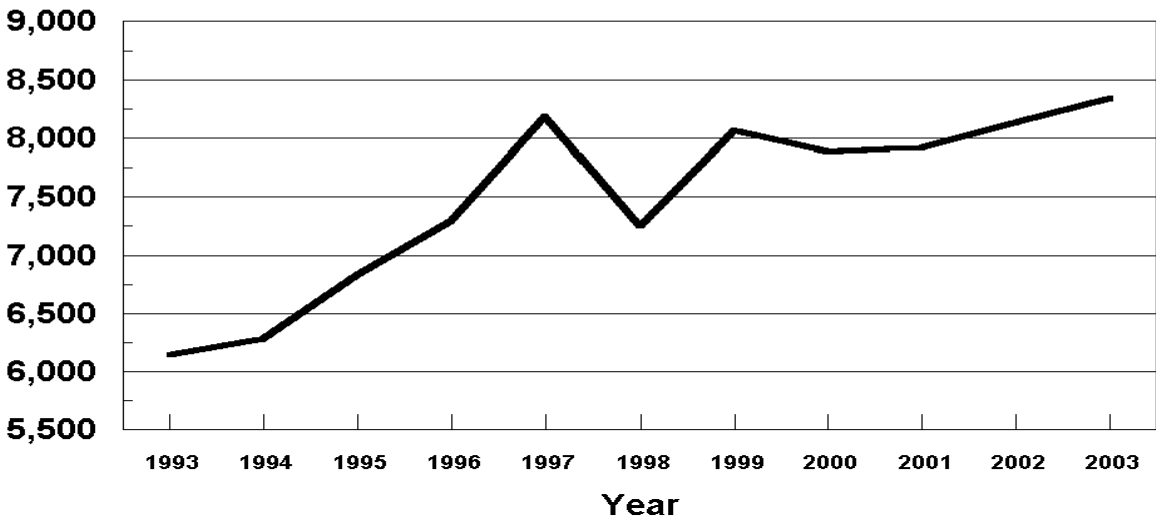
U.S. Noncitrus Fruits Utilized Production 1993 - 2003

1,000 Tons Fresh Equivalent



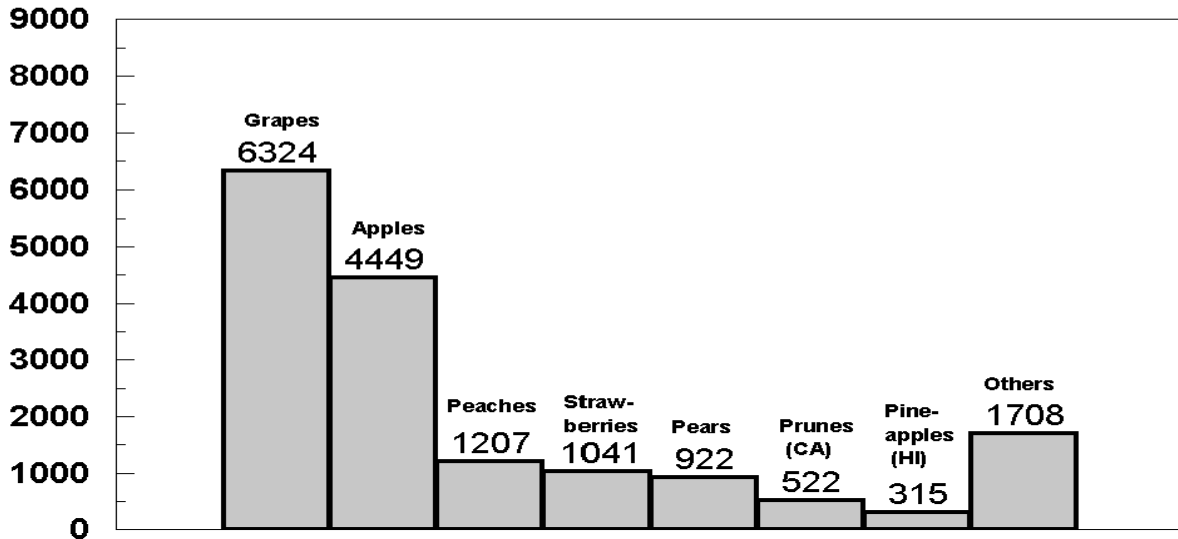
U.S. Noncitrus Fruits Value of Utilized Production 1993 - 2003

Million Dollars



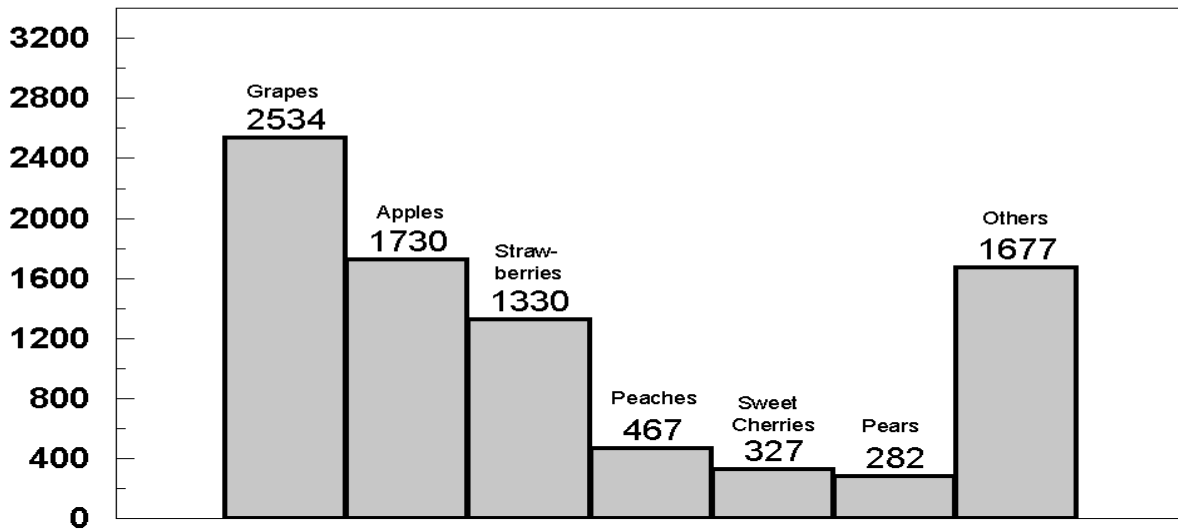
U.S. Noncitrus Fruits Utilized Production by Major Fruit, 2003

(000) Tons Fresh Equivalent



U.S. Noncitrus Fruits Value of Utilized Production by Major Fruit, 2003

Million Dollars



**Apples, Commercial: Bearing Acreage and Yield
by State and United States, 2001-2003**

State	Bearing Acreage			Yield per Acre ¹		
	2001	2002	2003	2001	2002	2003
	<i>Acres</i>	<i>Acres</i>	<i>Acres</i>	<i>Pounds</i>	<i>Pounds</i>	<i>Pounds</i>
AZ	2,000	2,000	1,000	2,700	13,100	5,100
AR	900	900	800	6,110	5,000	3,880
CA	29,000	26,000	26,000	17,900	18,100	17,700
CO	2,200	1,800	1,700	10,500	11,700	12,900
CT	2,300	2,300	2,300	8,910	5,220	8,260
GA	1,200	1,200	1,200	7,500	8,330	10,800
ID	5,400	5,400	5,400	14,800	14,800	16,700
IL	5,000	5,000	5,000	8,720	8,600	10,500
IN	4,000	4,000	4,000	13,300	10,000	12,800
IA	1,600	1,600	1,600	5,500	5,310	3,750
KS	400	350	300	10,000	10,000	11,300
KY	950	750	650	8,740	7,470	9,230
ME	3,500	3,500	3,500	13,400	13,900	13,400
MD	2,400	2,400	2,400	17,000	13,300	16,700
MA	4,700	4,700	4,500	8,300	7,020	9,560
MI	46,000	43,500	42,000	20,200	12,000	22,900
MN	2,900	2,800	2,600	8,280	8,930	10,400
MO	3,800	3,900	3,900	10,800	9,740	10,300
NH	2,700	2,600	2,600	11,100	10,200	9,810
NJ	2,800	2,600	2,600	19,600	13,500	17,300
NM	1,500	1,500	1,500	4,000	1,330	1,330
NY	41,000	41,000	41,000	24,400	16,600	29,300
NC	8,000	7,000	7,000	14,000	22,900	21,700
OH	7,400	7,500	7,600	11,600	9,330	12,500
OR	8,700	7,000	6,500	16,300	28,900	19,200
PA	23,000	20,000	20,000	20,900	18,500	22,000
RI	300	300	300	6,000	8,670	8,330
SC	1,600	1,500	1,200	3,750	6,000	5,000
TN	1,000	1,000	1,000	9,000	6,500	11,000
UT	2,800	2,800	2,800	10,700	2,500	8,570
VT	3,000	2,900	2,900	13,700	10,700	14,000
VA	15,000	15,000	15,000	20,700	16,700	20,000
WA	168,000	164,000	162,000	30,100	31,100	27,800
WV	6,500	6,500	6,500	16,200	14,600	13,800
WI	6,500	6,400	6,000	9,540	9,060	11,300
US	418,050	401,700	395,350	22,600	21,200	22,800

¹ Yield is based on total production, which includes unharvested production and fruit harvested but not sold due to market conditions.

**Apples, Commercial: Total and Utilized Production
by State and United States, 2001-2003**

State	Total Production			Utilized Production		
	2001	2002	2003	2001	2002	2003
	<i>Million Pounds</i>	<i>Million Pounds</i>	<i>Million Pounds</i>	<i>Million Pounds</i>	<i>Million Pounds</i>	<i>Million Pounds</i>
AZ	5.4	26.2	5.1	5.3	26.0	5.1
AR	5.5	4.5	3.1	4.3	3.4	3.0
CA	520.0	470.0	460.0	490.0	460.0	460.0
CO	23.0	21.0	22.0	23.0	20.0	21.0
CT	20.5	12.0	19.0	20.0	11.5	18.0
GA	9.0	10.0	13.0	8.9	9.9	12.9
ID	80.0	80.0	90.0	79.0	79.0	90.0
IL	43.6	43.0	52.5	40.6	35.3	45.9
IN	53.0	40.0	51.0	46.0	36.0	46.0
IA	8.8	8.5	6.0	7.7	5.2	4.7
KS	4.0	3.5	3.4	3.0	2.8	2.6
KY	8.3	5.6	6.0	7.0	4.0	5.7
ME	47.0	48.5	47.0	40.0	44.0	43.0
MD	40.8	32.0	40.0	40.7	31.9	38.4
MA	39.0	33.0	43.0	34.0	28.0	39.0
MI	930.0	520.0	960.0	900.0	515.0	960.0
MN	24.0	25.0	27.0	15.5	17.7	19.8
MO	41.0	38.0	40.0	41.0	36.0	40.0
NH	30.0	26.5	25.5	28.5	24.5	24.5
NJ	55.0	35.0	45.0	50.0	32.0	45.0
NM	6.0	2.0	2.0	6.0	1.8	1.8
NY	1,000.0	680.0	1,200.0	940.0	630.0	1,160.0
NC	112.0	160.0	152.0	107.0	155.0	140.0
OH	86.0	70.0	95.0	84.0	70.0	93.0
OR	142.0	202.0	125.0	141.0	187.0	125.0
PA	480.0	370.0	440.0	480.0	369.0	440.0
RI	1.8	2.6	2.5	1.4	2.1	2.1
SC	6.0	9.0	6.0	2.0	7.0	4.5
TN	9.0	6.5	11.0	6.5	5.4	10.5
UT	30.0	7.0	24.0	24.0	6.5	22.0
VT	41.0	31.0	40.5	38.0	28.0	38.0
VA	310.0	250.0	300.0	306.0	247.0	288.0
WA	5,050.0	5,100.0	4,500.0	5,050.0	5,100.0	4,500.0
WV	105.0	95.0	90.0	95.0	92.0	90.0
WI	62.0	58.0	68.0	49.0	52.0	58.0
US	9,428.7	8,525.4	9,014.6	9,214.4	8,375.0	8,897.5

**Apples, Commercial: Price and Value
by State and United States, 2001-2003**

State	Price per Pound			Value of Utilized Production		
	2001	2002	2003	2001	2002	2003
	<i>Dollars</i>	<i>Dollars</i>	<i>Dollars</i>	<i>1,000 Dollars</i>	<i>1,000 Dollars</i>	<i>1,000 Dollars</i>
AZ	0.066	0.173	0.085	350	4,506	436
AR	0.250	0.278	0.241	1,076	946	722
CA	0.157	0.204	0.169	77,110	93,840	77,510
CO	0.208	0.184	0.217	4,784	3,686	4,550
CT	0.322	0.412	0.385	6,445	4,740	6,930
GA	0.230	0.180	0.106	2,051	1,779	1,368
ID	0.141	0.194	0.203	11,115	15,308	18,225
IL	0.237	0.359	0.275	9,613	12,678	12,606
IN	0.185	0.265	0.201	8,521	9,528	9,254
IA	0.333	0.343	0.424	2,562	1,783	1,991
KS	0.283	0.315	0.305	850	881	793
KY	0.290	0.318	0.326	2,030	1,272	1,860
ME	0.290	0.361	0.359	11,605	15,900	15,450
MD	0.155	0.143	0.157	6,292	4,549	6,012
MA	0.324	0.386	0.356	11,013	10,821	13,885
MI	0.094	0.124	0.100	84,330	64,110	95,525
MN	0.475	0.509	0.436	7,363	9,008	8,623
MO	0.171	0.178	0.208	7,017	6,396	8,310
NH	0.250	0.285	0.283	7,133	6,993	6,938
NJ	0.162	0.176	0.133	8,117	5,640	6,000
NM	0.318	0.326	0.307	1,908	587	553
NY	0.119	0.162	0.192	111,860	101,980	222,710
NC	0.149	0.143	0.130	15,931	22,205	18,261
OH	0.236	0.268	0.273	19,831	18,750	25,344
OR	0.121	0.152	0.146	17,085	28,433	18,285
PA	0.096	0.101	0.092	46,080	37,150	40,283
RI	0.383	0.404	0.396	536	849	831
SC	0.187	0.132	0.225	373	921	1,013
TN	0.235	0.260	0.249	1,527	1,402	2,613
UT	0.172	0.213	0.230	4,136	1,384	5,063
VT	0.241	0.337	0.289	9,150	9,435	10,980
VA	0.106	0.104	0.126	32,541	25,756	36,380
WA	0.178	0.201	0.227	900,250	1,023,000	1,023,200
WV	0.085	0.085	0.090	8,120	7,821	8,100
WI	0.293	0.349	0.334	14,368	18,165	19,345
US	0.158	0.188	0.194	1,453,073	1,572,202	1,729,949

**Apples, Commercial: Fresh Market Utilization and Price
by State and United States, 2001-2003 ¹**

State	Fresh Market					
	Quantity			Price per Pound ²		
	2001	2002	2003	2001	2002	2003
	<i>Million Pounds</i>	<i>Million Pounds</i>	<i>Million Pounds</i>	<i>Dollars</i>	<i>Dollars</i>	<i>Dollars</i>
AZ	0.1	6.0		0.383	0.551	
CA	220.0	230.0		0.229	0.303	
CO	15.0	11.0		0.276	0.286	
CT	16.5	10.0		0.380	0.465	
ID	49.0	55.0		0.210	0.260	
IN	23.0	26.0		0.312	0.343	
KY	6.5	3.8		0.305	0.330	
ME	33.0	39.0		0.340	0.400	
MD	19.1	14.8		0.261	0.212	
MA	26.5	22.5		0.400	0.465	
MI	270.0	150.0		0.170	0.223	
MO	28.0	20.0		0.226	0.267	
NH	18.0	13.5		0.370	0.465	
NJ	23.0	20.0		0.276	0.240	
NM	6.0	1.8		0.318	0.326	
NY	420.0	310.0		0.184	0.250	
NC	45.0	53.0		0.250	0.265	
OH	70.0	59.0		0.271	0.304	
OR	94.0	115.0		0.154	0.215	
PA	120.0	74.0		0.201	0.215	
SC	1.1	3.3		0.264	0.200	
UT	16.0	5.5		0.250	0.240	
VT	29.0	23.5		0.300	0.390	
VA	88.0	70.0		0.210	0.196	
WA	3,700.0	3,900.0		0.232	0.248	
WV	15.0	15.0		0.200	0.180	
WI	41.0	46.0		0.340	0.390	
Oth Sts	77.0	68.5		0.319	0.412	
US	5,469.8	5,366.2		0.229	0.256	

¹ Estimates for 2003 will be published on July 7, 2004.

² Equivalent packinghouse door returns for CA, NY, and WA; price at first sale for all other States.

**Apples, Commercial: Value of Fresh Market Production
by State and United States, 2001-2003 ¹**

State	Fresh Market		
	Value of Production		
	2001	2002	2003
	<i>1,000 Dollars</i>	<i>1,000 Dollars</i>	<i>1,000 Dollars</i>
AZ	38	3,306	
CA	50,380	69,690	
CO	4,140	3,146	
CT	6,270	4,650	
ID	10,290	14,300	
IN	7,176	8,918	
KY	1,983	1,254	
ME	11,220	15,600	
MD	4,985	3,138	
MA	10,600	10,463	
MI	45,900	33,450	
MO	6,328	5,340	
NH	6,660	6,278	
NJ	6,348	4,800	
NM	1,908	587	
NY	77,280	77,500	
NC	11,250	14,045	
OH	18,970	17,936	
OR	14,476	24,725	
PA	24,120	15,910	
SC	290	660	
UT	4,000	1,320	
VT	8,700	9,165	
VA	18,480	13,720	
WA	858,400	967,200	
WV	3,000	2,700	
WI	13,940	17,940	
Oth Sts	24,597	28,216	
US	1,251,729	1,375,957	

¹ Estimates for 2003 will be published on July 7, 2004.

**Apples, Commercial: Processed Utilization and Price
by State and United States, 2001-2003 ¹**

State	Processed					
	Quantity			Price per Ton		
	2001	2002	2003	2001	2002	2003
	<i>Million Pounds</i>	<i>Million Pounds</i>	<i>Million Pounds</i>	<i>Dollars</i>	<i>Dollars</i>	<i>Dollars</i>
AZ	5.2	20.0		120.00	120.00	
CA	270.0	230.0		198.00	210.00	
CO	8.0	9.0		161.00	120.00	
CT	3.5	1.5		100.00	120.00	
ID	30.0	24.0		55.00	84.00	
IN	23.0	10.0		117.00	122.00	
KY	0.5	0.2		188.00	180.00	
ME	7.0	5.0		110.00	120.00	
MD	21.6	17.1		121.00	165.00	
MA	7.5	5.5		110.00	130.00	
MI	630.0	365.0		122.00	168.00	
MO	13.0	16.0		106.00	132.00	
NH	10.5	11.0		90.00	130.00	
NJ	27.0	12.0		131.00	140.00	
NY	520.0	320.0		133.00	153.00	
NC	62.0	102.0		151.00	160.00	
OH	14.0	11.0		123.00	148.00	
OR	47.0	72.0		111.00	103.00	
PA	360.0	295.0		122.00	144.00	
SC	0.9	3.7		184.00	141.00	
UT	8.0	1.0		34.00	128.00	
VT	9.0	4.5		100.00	120.00	
VA	218.0	177.0		129.00	136.00	
WA	1,350.0	1,200.0		62.00	93.00	
WV	80.0	77.0		128.00	133.00	
WI	8.0	6.0		107.00	75.00	
Oth Sts	10.9	13.3		180.00	167.00	
US	3,744.6	3,008.8		108.00	130.00	

¹ Estimates for 2003 will be published on July 7, 2004.

**Apples, Commercial: Value of Processed Production
by State and United States, 2001-2003 ¹**

State	Processed		
	Value of Production		
	2001	2002	2003
	<i>1,000 Dollars</i>	<i>1,000 Dollars</i>	<i>1,000 Dollars</i>
AZ	312	1,200	
CA	26,730	24,150	
CO	644	540	
CT	175	90	
ID	825	1,008	
IN	1,345	610	
KY	47	18	
ME	385	300	
MD	1,307	1,411	
MA	413	358	
MI	38,430	30,660	
MO	689	1,056	
NH	473	715	
NJ	1,769	840	
NY	34,580	24,480	
NC	4,681	8,160	
OH	861	814	
OR	2,609	3,708	
PA	21,960	21,240	
SC	83	261	
UT	136	64	
VT	450	270	
VA	14,061	12,036	
WA	41,850	55,800	
WV	5,120	5,121	
WI	428	225	
Oth Sts	981	1,110	
US	201,344	196,245	

¹ Estimates for 2003 will be published on July 7, 2004.

**Apples, Commercial: Processed Utilization, Use, and Price
by State and United States, 2001-2003 ¹**

Use and State	Processed Utilization					
	Quantity			Price per Ton		
	2001	2002	2003	2001	2002	2003
	<i>Million Pounds</i>	<i>Million Pounds</i>	<i>Million Pounds</i>	<i>Dollars</i>	<i>Dollars</i>	<i>Dollars</i>
Canned						
CA	17.0	22.0		146.00	208.00	
MI	220.0	135.0		145.00	200.00	
NY	320.0	228.0		152.00	166.00	
NC	37.0	61.0		179.00	176.00	
PA	226.0	201.0		142.00	160.00	
VA	168.0	142.0		139.00	143.00	
WA	155.0	190.0		88.00	140.00	
WV	58.0	60.0		142.00	140.00	
Oth Sts	57.4	39.9		140.00	163.00	
US	1,258.4	1,078.9		139.00	161.00	
Juice & Cider						
CA	218.0	198.0		209.00	213.00	
MI	280.0	135.0		85.00	105.00	
NY	155.0	65.0		86.00	100.00	
NC	24.0	38.0		107.00	130.00	
OR	24.0	28.0		52.00	76.00	
PA	125.0	86.0		87.00	109.00	
VA	48.0	33.0		94.00	107.00	
WA	910.0	760.0		50.00	73.00	
WV	20.0	15.0		88.00	104.00	
Oth Sts	141.7	121.4		92.80	112.00	
US	1,945.7	1,479.4		83.40	104.00	

See footnote(s) at end of table.

--continued

**Apples, Commercial: Processed Utilization, Use, and Price
by State and United States, 2001-2003 ¹ (continued)**

Use and State	Processed Utilization					
	Quantity			Price per Ton		
	2001	2002	2003	2001	2002	2003
	<i>Million Pounds</i>	<i>Million Pounds</i>	<i>Million Pounds</i>	<i>Dollars</i>	<i>Dollars</i>	<i>Dollars</i>
Frozen						
MI	115.0	90.0		165.00	210.00	
NY	30.0	20.0		150.00	182.00	
Oth Sts	103.5	81.7		108.00	135.00	
US	248.5	191.7		139.00	175.00	
Dried						
US	221.0	207.9		84.70	108.00	
Other ²						
MI	15.0	5.0		130.00	245.00	
NY	15.0	7.0		164.00	120.00	
Oth Sts	41.0	38.9		157.00	157.00	
US	71.0	50.9		153.00	161.00	

¹ Estimates for 2003 will be published on July 7, 2004.

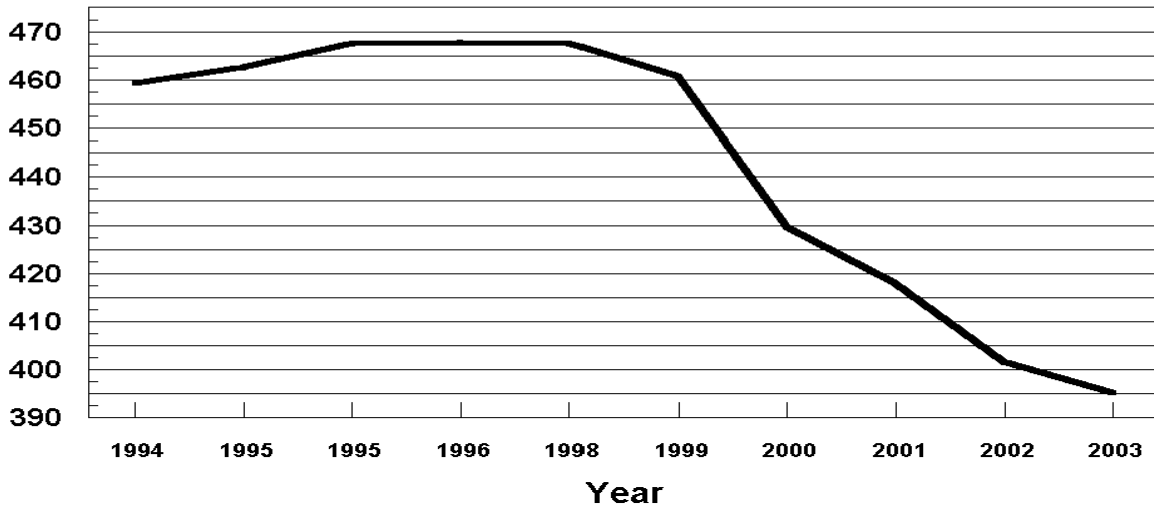
² Includes vinegar, wine, and fresh slices for pie making.

U. S. Apples

Bearing Acres

1994 - 2003

(000) Acres

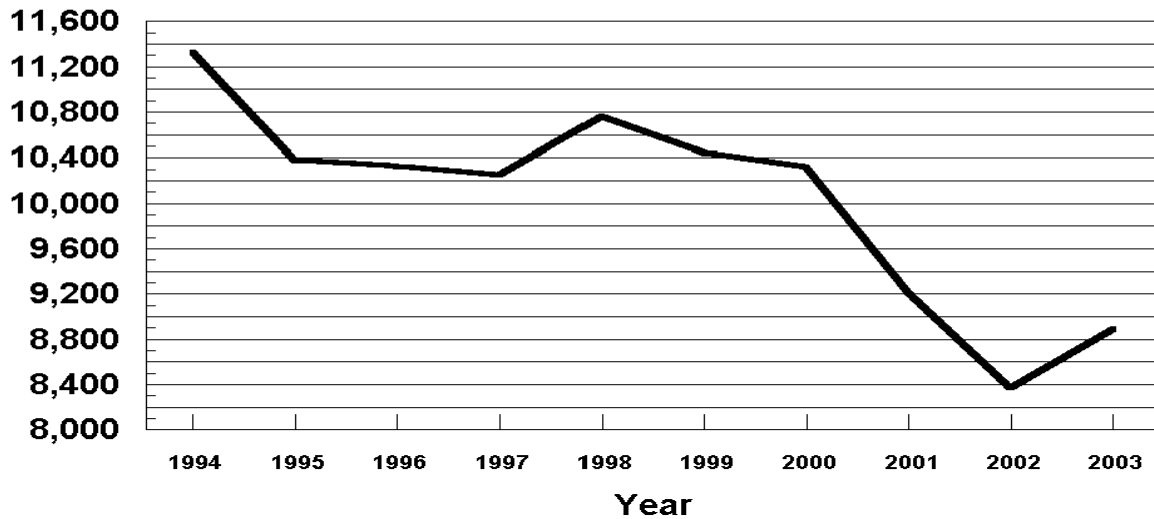


U. S. Apples

Utilized Production

1994 - 2003

Million Pounds



**Miscellaneous Fruits: Bearing Acreage, Yield, Production, and Utilization
by State and United States, 2001-2003**

Crop, State, and Season	Bearing Acreage	Yield Per Acre ¹	Production		Utilization	
			Total	Utilized	Fresh	Processed
	<i>Acres</i>	<i>Tons</i>	<i>Tons</i>	<i>Tons</i>	<i>Tons</i>	<i>Tons</i>
Apricots ²						
CA						
2001	18,000	4.28	77,000	70,000	14,000	56,000
2002	17,000	5.00	85,000	75,000	14,000	61,000
2003	16,500	5.61	92,500	92,500	22,000	70,500
UT						
2001			260	230		
2002			140	130		
2003			180	160		
WA						
2001			5,200	5,200		
2002			4,900	4,900		
2003			5,200	5,200		
US						
2001	19,430	4.24	82,460	75,430	18,230	57,200
2002	18,430	4.89	90,040	80,030	18,290	61,740
2003	17,930	5.46	97,880	97,860	26,250	71,610
Avocados ³						
CA						
2001-02	58,000	3.45	200,000	200,000	200,000	
2002-03	58,500	2.94	172,000	172,000	172,000	
2003-04						
FL						
2001-02	5,900	3.90	23,000	23,000	23,000	
2002-03	5,900	5.25	31,000	31,000	31,000	
2003-04						
HI						
2001-02	230	1.30	300	300	300	
2002-03	250	1.40	350	350	350	
2003-04						
US						
2001-02	64,130	3.48	223,300	223,300	223,300	
2002-03	64,650	3.15	203,350	203,350	203,350	
2003-04						
Dates						
CA						
2001	5,200	3.79	19,700	19,700	19,700	
2002	5,000	4.84	24,200	24,200	24,200	
2003	4,800	4.04	19,400	19,400	19,400	

¹ Yield is based on total production.

² Missing data not published to avoid disclosure of individual operations.

³ Estimates for 2003-04 will be published on July 7, 2004.

**Miscellaneous Fruits: Price and Value by State
and United States, 2001-2003 ¹**

Crop, State, and Season	Price per Ton			Value of Production		
	Fresh	Processed	All	Fresh	Processed	Total
	<i>Dollars</i>	<i>Dollars</i>	<i>Dollars</i>	<i>1,000 Dollars</i>	<i>1,000 Dollars</i>	<i>1,000 Dollars</i>
Apricots ²						
CA						
2001	551.00	260.00	319.00	7,714	14,616	22,330
2002	490.00	271.00	306.00	6,860	16,104	22,964
2003	492.00	264.00	316.00	10,824	18,401	29,225
UT						
2001			852.00			196
2002			708.00			92
2003			588.00			94
WA						
2001			783.00			4,072
2002			1,120.00			5,509
2003			1,040.00			5,410
US						
2001	650.00	257.00	353.00	11,849	14,749	26,598
2002	678.00	268.00	357.00	12,405	16,160	28,565
2003	618.00	261.00	355.00	16,234	18,495	34,729
Avocados ³						
CA						
2001-02	1,790.00		1,790.00	358,000		358,000
2002-03	2,170.00		2,170.00	373,240		373,240
2003-04						
FL						
2001-02	676.00		676.00	15,548		15,548
2002-03	556.00		556.00	17,236		17,236
2003-04						
HI						
2001-02	1,140.00		1,140.00	342		342
2002-03	1,120.00		1,120.00	392		392
2003-04						
US						
2001-02	1,670.00		1,670.00	373,890		373,890
2002-03	1,920.00		1,920.00	390,868		390,868
2003-04						
Dates						
CA						
2001	1,360.00		1,360.00	26,792		26,792
2002	1,550.00		1,550.00	37,510		37,510
2003	1,430.00		1,430.00	27,742		27,742

¹ Missing data not published to avoid disclosure of individual operations.

² Apricot processed price excludes dried. Processing value includes dried.

³ Estimates for 2003-04 will be published on July 7, 2004.

**Miscellaneous Fruits: Bearing Acreage, Yield, Production, and Utilization
by State and United States, 2001-2003 ¹**

Crop, State, and Season	Bearing Acreage	Yield Per Acre ²	Production		Utilization	
			Total	Utilized	Fresh	Processed
	<i>Acres</i>	<i>Tons</i>	<i>Tons</i>	<i>Tons</i>	<i>Tons</i>	<i>Tons</i>
Figs ³						
CA						
2001	14,000	2.93	41,000	41,000	2,000	39,000
2002	13,500	3.94	53,200	53,200	2,500	50,700
2003	13,000	3.58	46,500	46,500	3,000	43,500
Kiwifruit						
CA						
2001	4,900	5.27	25,800	23,000	22,200	800
2002	4,500	5.80	26,100	23,100	22,300	800
2003	4,500	5.27	23,700	20,900	20,100	800
Nectarines						
CA						
2001	36,500	7.53	275,000	275,000	265,400	9,600
2002 ⁴	36,500	8.22	300,000	300,000	300,000	
2003 ⁴	36,500	7.62	278,000	278,000	278,000	
Olives						
CA						
2001	36,000	3.72	134,000	134,000	500	133,500
2002	36,000	2.86	103,000	103,000	500	102,500
2003	36,000	3.28	118,000	118,000	500	117,500
Plums						
CA						
2001	37,000	5.68	210,000	210,000		
2002	36,000	5.58	201,000	201,000		
2003	36,000	5.89	212,000	212,000		

¹ Missing data not published to avoid disclosure of individual operations.

² Yield is based on total production.

³ Small quantities of canned figs are included in fresh to avoid disclosure of individual operations.

⁴ Small quantities of processed nectarines are included in fresh to avoid disclosure of individual operations.

**Miscellaneous Fruits: Price and Value by State
and United States, 2001-2003 ¹**

Crop, State, and Season	Price per Ton			Value of Production		
	Fresh	Processed	All	Fresh	Processed	Total
	<i>Dollars</i>	<i>Dollars</i>	<i>Dollars</i>	<i>1,000 Dollars</i>	<i>1,000 Dollars</i>	<i>1,000 Dollars</i>
Figs						
CA						
2001			366.00			15,012
2002			329.00			17,526
2003			475.00			22,076
Kiwifruit ²						
CA						
2001			667.00			15,340
2002			783.00			18,097
2003						
Nectarines						
CA						
2001	480.00	26.00	464.00	127,392	250	127,642
2002 ³	382.00		382.00	114,600		114,600
2003 ³	436.00		436.00	121,208		121,208
Olives						
CA						
2001	500.00	673.00	672.00	250	89,846	90,096
2002	500.00	573.00	573.00	250	58,733	58,983
2003	500.00	426.00	426.00	250	50,055	50,305
Plums						
CA						
2001			306.00			64,362
2002			386.00			77,586
2003			418.00			88,616

¹ Missing data not published to avoid disclosure of individual operations.

² Estimates for 2003 will be published on July 7, 2004.

³ Small quantities of processed nectarines are included in fresh to avoid disclosure of individual operations.

**Miscellaneous Fruits: Bearing Acreage, Yield, Production, and Utilization
by State and United States, 2001-2003 ¹**

Crop, State, and Season	Bearing Acreage	Yield Per Acre ²	Production		Utilization	
			Total	Utilized	Fresh	Processed
	<i>Acres</i>	<i>Tons</i>	<i>Tons</i>	<i>Tons</i>	<i>Tons</i>	<i>Tons</i>
Prunes & Plums						
ID						
2001			3,000	3,000		
2002			2,000	1,950		
2003			2,500	2,480		
MI						
2001	800	4.50	3,600	3,600	1,800	1,800
2002	800	0.31	250	240	60	180
2003	800	4.50	3,600	3,600	1,100	2,500
OR						
2001	1,900	4.74	9,000	7,800		
2002	1,900	4.21	8,000	7,200		
2003	1,900	2.89	5,500	4,100		
WA						
2001			5,600	5,600		
2002			5,400	5,400		
2003			5,300	5,300		
4-State Total						
2001	4,210	5.04	21,200	20,000	11,000	9,000
2002	4,210	3.72	15,650	14,790	6,360	8,430
2003	4,210	4.01	16,900	15,480	7,700	7,780
Prunes (Dried Basis)						
CA						
2001	86,000	1.74	150,000	135,000		135,000
2002	74,000	2.32	172,000	163,000		163,000
2003	72,000	2.44	176,000	161,000		161,000

¹ Missing data not published to avoid disclosure of individual operations.

² Yield is based on total production.

**Miscellaneous Fruits: Price and Value by State
and United States, 2001-2003 ¹**

Crop, State, and Season	Price per Ton			Value of Production		
	Fresh	Processed	All	Fresh	Processed	Total
	<i>Dollars</i>	<i>Dollars</i>	<i>Dollars</i>	<i>1,000 Dollars</i>	<i>1,000 Dollars</i>	<i>1,000 Dollars</i>
Prunes & Plums						
ID						
2001			582.00			1,745
2002			536.00			1,045
2003			518.00			1,284
MI						
2001	442.00	274.00	358.00	796	493	1,289
2002	600.00	278.00	358.00	36	50	86
2003	480.00	300.00	355.00	528	750	1,278
OR						
2001			166.00			1,298
2002			251.00			1,808
2003			272.00			1,114
WA						
2001			201.00			1,127
2002			240.00			1,298
2003			332.00			1,758
4-State Total						
2001	345.00	185.00	273.00	3,790	1,669	5,459
2002	396.00	204.00	286.00	2,521	1,716	4,237
2003	446.00	257.00	351.00	3,434	2,000	5,434
Prunes (Dried Basis)						
CA						
2001		726.00	726.00		98,010	98,010
2002		810.00	810.00		132,030	132,030
2003		730.00	730.00		117,530	117,530

¹ Missing data not published to avoid disclosure of individual operations.

**Miscellaneous Fruits: Processed Utilization, Use, and Price
by State and United States, 2001-2003¹**

Crop, Use, and State	Processed Utilization					
	Quantity			Price per Ton		
	2001	2002	2003	2001	2002	2003
	<i>Tons</i>	<i>Tons</i>	<i>Tons</i>	<i>Dollars</i>	<i>Dollars</i>	<i>Dollars</i>
Apricots						
Canned						
CA	31,000	30,500	30,000	292.00	286.00	298.00
Juice						
CA	9,000	7,000	9,200	102.00	158.00	210.00
Frozen						
CA	9,000	10,500	11,000	308.00	299.00	313.00
Dried (Fresh Basis)						
CA	6,000	8,000	6,800	268.00	223.00	233.00
Figs						
Dried (Fresh Basis)						
CA	39,000	50,700	43,500	308.00	289.00	441.00
Olives						
Canned						
CA	109,700	82,800	96,000	770.00	662.00	475.00
Crushed for Oil						
CA	3,000	6,000	7,500	300.00	240.00	238.00
Limited						
CA	15,300	9,900	10,500	287.00	249.00	254.00
Undersized						
CA	5,500	3,800	3,500	6.00	8.00	10.00
Prunes & Plums						
Canned						
4-State Total	4,470	3,340	3,800	190.00	175.00	255.00
Frozen						
4-State Total	1,280	1,160	1,300	241.00	147.00	339.00
Dried & Other						
4-State Total	3,250	3,930	2,680	157.00	245.00	220.00

¹ Missing data not published to avoid disclosure of individual operations.

**Olives: Variety and Total Production, California
2001-2003**

Variety	Total Production		
	2001	2002 ¹	2003 ¹
	<i>Tons</i>	<i>Tons</i>	<i>Tons</i>
Ascolano	4,200		
Manzanillo	105,900	68,000	102,000
Mission	1,400		
Servillano	16,700	23,500	13,000
All Other ²	5,800	11,500	3,000
Total	134,000	103,000	118,000

¹ Ascolano and Mission varieties are included in All Other.

² Includes production for varieties that were or will be used for canned, oil, and other specialty products.

California Dry Fruits: Production, Use, and Price, 2001-2003

Crop	Quantity			Price per Ton		
	2001	2002	2003	2001	2002	2003
	<i>Tons</i>	<i>Tons</i>	<i>Tons</i>	<i>Dollars</i>	<i>Dollars</i>	<i>Dollars</i>
Fresh Basis						
Apricots	6,000	8,000	6,800	268.00	223.00	233.00
Figs	39,000	50,700	43,500	308.00	289.00	441.00
Grapes						
Raisin	1,707,000	1,887,000	1,547,000	137.00	91.40	113.00
Table	25,000	20,000	17,000	149.00	128.00	139.00
Peaches						
Freestone	14,600	14,200	10,150	51.00	49.00	47.00
Pears						
Bartlett	3,000	3,000	2,000	202.00	202.00	210.00
Prunes	378,000	492,000	522,000	259.00	268.00	225.00
Dried Basis						
Apricots ¹	820	1,120	900	1,960.00	1,590.00	1,760.00
Figs ²						
Standard	11,700	15,000	12,900	1,020.00	972.00	1,480.00
Sub-Std.	1,300	1,900	1,600	60.00	50.00	60.00
Grapes						
Raisin ^{3 4}	411,300	438,900	336,300	570.00	393.00	520.00
Table ⁵	5,800	4,500	3,700	644.00	568.00	640.00
Peaches ⁶						
Freestone	1,450	1,525	1,070	514.00	456.00	446.00
Pears ⁷						
Bartlett	500	460	310	1,210.00	1,315.00	1,350.00
Prunes ⁸	135,000	163,000	161,000	726.00	810.00	730.00

¹ Dried basis 1 ton of apricots equivalent to 7.32 for 2001, 7.14 tons for 2002, and 7.56 tons for 2003.

² Dried basis 1 ton of all figs equivalent to 3.00 tons for 2001, 2002, and 2003.

³ Includes substandard raisins diverted to other uses.

⁴ Dried basis 1 ton of raisins equivalent to 4.15 tons for 2001, 4.30 tons for 2002, and 4.60 tons for 2003.

⁵ Dried basis 1 ton of table type raisins equivalent to 4.31 tons for 2001, 4.44 tons for 2002, and 4.59 tons for 2003.

⁶ Dried basis 1 ton of Freestone peaches equivalent to 10.07 tons for 2001, 9.31 tons for 2002, and 9.49 tons for 2003.

⁷ Dried basis 1 ton of Bartlett pears equivalent to 6.00 tons for 2001, 6.52 tons for 2002, and 6.45 tons for 2003.

⁸ Dried basis 1 ton of dried prunes equivalent to 2.80 tons for 2001, 3.02 tons for 2002, and 3.24 tons for 2003.

**Strawberries: Area Planted and Harvested, Yield, and Production
by Season, State, and United States, 2001-2003**

Season and State	Area Planted			Area Harvested		
	2001	2002	2003	2001	2002	2003
	<i>Acres</i>	<i>Acres</i>	<i>Acres</i>	<i>Acres</i>	<i>Acres</i>	<i>Acres</i>
Winter FL	6,500	6,900	7,100	6,500	6,900	7,100
Spring						
CA	26,400	28,500	29,600	26,400	28,500	29,600
MI	1,000	1,300	1,300	900	1,200	1,200
NJ ¹	500			400		
NY	1,700	1,700	1,700	1,600	1,400	1,500
NC	1,800	1,900	1,800	1,700	1,800	1,700
OH	1,200	1,300	1,300	1,000	1,100	1,100
OR	3,800	3,500	3,500	3,100	3,000	2,600
PA	1,300	1,300	1,300	1,300	1,300	1,300
VA ¹	500			500		
WA	1,600	1,800	1,700	1,600	1,800	1,700
WI	1,100	1,000	1,000	1,000	900	900
Total	40,900	42,300	43,200	39,500	41,000	41,600
US	47,400	49,200	50,300	46,000	47,900	48,700
	Yield per Acre			Production		
	2001	2002	2003	2001	2002	2003
	<i>Cwt</i>	<i>Cwt</i>	<i>Cwt</i>	<i>1,000 Cwt</i>	<i>1,000 Cwt</i>	<i>1,000 Cwt</i>
Winter FL	260	255	220	1,690	1,760	1,562
Spring						
CA	520	565	620	13,728	16,097	18,352
MI	56	47	53	50	56	63
NJ ¹	45			18		
NY	38	45	33	60	63	50
NC	115	125	100	196	225	170
OH	46	35	48	46	39	53
OR	130	115	115	402	338	295
PA	66	56	64	86	73	83
VA ¹	82			41		
WA	100	90	90	160	162	153
WI	46	48	50	46	43	45
Total	376	417	463	14,833	17,096	19,264
US	359	394	428	16,523	18,856	20,826

¹ Estimates discontinued in 2002.

**Strawberries: Price and Value by Season, State,
and United States, 2001-2003**

Season and State	Price per Cwt			Value of Production		
	2001	2002	2003	2001	2002	2003
	<i>Dollars</i>	<i>Dollars</i>	<i>Dollars</i>	<i>1,000 Dollars</i>	<i>1,000 Dollars</i>	<i>1,000 Dollars</i>
Winter						
FL	99.00	87.20	87.20	167,310	153,472	136,206
Spring						
CA	60.20	57.90	61.00	826,478	931,649	1,118,802
MI	93.60	93.40	100.00	4,682	5,228	6,320
NJ ¹	72.20			1,300		
NY	118.00	140.00	155.00	7,080	8,820	7,750
NC	85.00	85.00	90.00	16,660	19,125	15,300
OH	105.00	124.00	120.00	4,830	4,836	6,360
OR	37.70	49.20	49.70	15,164	16,613	14,675
PA	110.00	137.00	134.00	9,460	10,001	11,122
VA ¹	124.00			5,084		
WA	43.40	51.00	52.20	6,944	8,262	7,979
WI	110.00	116.00	117.00	5,060	4,988	5,265
Total	60.90	59.10	62.00	902,742	1,009,522	1,193,573
US	64.80	61.70	63.90	1,070,052	1,162,994	1,329,779

¹ Estimates discontinued in 2002.

**Strawberries: Fresh Market and Processed Production by
Season, State, and United States, 2001-2003**

Utilization, Season, and State	Production		
	2001 <i>1,000 Cwt</i>	2002 <i>1,000 Cwt</i>	2003 <i>1,000 Cwt</i>
Fresh			
Winter			
FL	1,690	1,760	1,562
Spring			
CA	10,338	11,779	13,640
MI	44	51	58
NJ ¹	18		
NY	60	63	50
NC	196	225	170
OH	46	39	53
OR	22	23	20
PA	86	73	83
VA ¹	41		
WA	24	18	20
WI	46	43	45
Total	10,921	12,314	14,139
US	12,611	14,074	15,701
Processed			
Spring			
CA	3,390	4,318	4,712
MI	6	5	5
OR	380	315	275
WA	136	144	133
US	3,912	4,782	5,125

¹ Estimates discontinued in 2002.

**Strawberries: Fresh Market and Processed Price and Value
by Season, State, and United States, 2001-2003**

Utilization, Season, and State	Price per Cwt			Value of Production		
	2001	2002	2003	2001	2002	2003
	<i>Dollars</i>	<i>Dollars</i>	<i>Dollars</i>	<i>1,000 Dollars</i>	<i>1,000 Dollars</i>	<i>1,000 Dollars</i>
Fresh						
Winter						
FL	99.00	87.20	87.20	167,310	153,472	136,206
Spring						
CA	70.60	67.40	72.80	729,863	793,905	992,992
MI	100.00	98.00	105.00	4,400	4,998	6,090
NJ ¹	72.20			1,300		
NY	118.00	140.00	155.00	7,080	8,820	7,750
NC	85.00	85.00	90.00	16,660	19,125	15,300
OH	105.00	124.00	120.00	4,830	4,836	6,360
OR	102.00	106.00	115.00	2,244	2,438	2,300
PA	110.00	137.00	134.00	9,460	10,001	11,122
VA ¹	124.00			5,084		
WA	108.00	107.00	113.00	2,592	1,926	2,260
WI	110.00	116.00	117.00	5,060	4,988	5,265
Total	72.20	69.10	74.20	788,573	851,037	1,049,439
US	75.80	71.40	75.50	955,883	1,004,509	1,185,645
Processed						
Spring						
CA	28.50	31.90	26.70	96,615	137,744	125,810
MI	47.00	46.00	46.00	282	230	230
OR	34.00	45.00	45.00	12,920	14,175	12,375
WA	32.00	44.00	43.00	4,352	6,336	5,719
US	29.20	33.10	28.10	114,169	158,485	144,134

¹ Estimates discontinued in 2002.

**Berries: Harvested Acreage, Yield, Production, and Utilization
by Crop, State, and United States, 2001-2003**

Crop, State, and Year	Area Harvested	Yield Per Acre ¹	Production		Utilization	
			Total	Utilized	Fresh	Processed
	<i>Acres</i>	<i>Pounds</i>	<i>1,000 Pounds</i>	<i>1,000 Pounds</i>	<i>1,000 Pounds</i>	<i>1,000 Pounds</i>
Cultivated						
Blueberries						
AL						
2001 ²	310	1,710	800	530	530	
2002 ²	280	1,430	620	400	400	
2003 ²	320	1,410	600	450	450	
AR						
2001 ²	400	2,030	1,060	810	810	
2002 ²	550	2,960	1,720	1,630	1,630	
2003 ²	550	2,820	1,650	1,550	1,550	
FL						
2001	1,500	2,070	3,400	3,100	2,800	300
2002 ²	1,600	1,810	3,100	2,900	2,900	
2003 ²	1,900	1,840	3,800	3,500	3,500	
GA						
2001	4,600	3,700	18,000	17,000	6,000	11,000
2002	4,600	3,700	17,000	17,000	8,000	9,000
2003	4,600	3,700	17,000	17,000	8,000	9,000
IN						
2001	670	2,240	1,600	1,500	900	600
2002	650	4,620	3,100	3,000	1,500	1,500
2003	600	4,170	2,600	2,500	1,700	800
MI						
2001	16,800	4,170	70,000	70,000	21,000	49,000
2002	16,900	3,790	64,000	64,000	22,000	42,000
2003	15,400	3,900	60,000	60,000	24,000	36,000
NJ						
2001	7,400	5,000	38,000	37,000	29,000	8,000
2002	7,400	5,680	43,000	42,000	37,000	5,000
2003	7,500	5,330	41,000	40,000	33,000	7,000
NY						
2001	700	2,140	1,700	1,500	1,450	50
2002	700	2,710	2,100	1,900	1,800	100
2003	700	2,860	2,100	2,000	1,950	50
NC						
2001	2,700	5,000	13,800	13,500	10,500	3,000
2002	3,700	4,190	17,000	15,500	11,300	4,200
2003	4,200	5,360	22,500	22,500	16,100	6,400
OR						
2001	2,800	10,300	29,300	28,900	10,900	18,000
2002	2,800	9,820	27,500	27,500	11,000	16,500
2003	3,000	8,330	25,200	25,000	11,000	14,000
WA						
2001	2,000	7,500	15,550	15,000	4,200	10,800
2002	2,000	6,500	13,000	13,000	2,200	10,800
2003	2,200	6,000	13,200	13,200	3,400	9,800
US						
2001	39,880	4,740	193,210	188,840	87,990	100,850
2002	41,180	4,590	192,140	188,830	99,680	89,150
2003	40,970	4,580	189,650	187,700	104,620	83,080
Wild						
Blueberries						
ME						
2001			75,200	75,200	350	74,850
2002			62,400	62,400	400	62,000
2003			80,200	80,200	400	79,800

¹ Yield is based on utilized production.

² Small quantities of processed blueberries are included in fresh to avoid disclosure of individual operations.

**Berries: Price and Value by Crop, State,
and United States, 2001-2003**

Crop, State and Year	Price per Pound			Value of Production		
	Fresh	Processed	All	Fresh	Processed	Total
	<i>Dollars</i>	<i>Dollars</i>	<i>Dollars</i>	<i>1,000 Dollars</i>	<i>1,000 Dollars</i>	<i>1,000 Dollars</i>
Cultivated Blueberries						
AL						
2001 ¹	0.917		0.917	486		486
2002 ¹	0.943		0.943	377		377
2003 ¹	1.070		1.070	482		482
AR						
2001 ¹	1.450		1.450	1,171		1,171
2002 ¹	1.150		1.150	1,878		1,878
2003 ¹	1.330		1.330	2,067		2,067
FL						
2001	4.300	0.650	3.950	12,040	195	12,235
2002 ¹	6.400		6.400	18,560		18,560
2003 ¹	5.200		5.200	18,200		18,200
GA						
2001	1.250	0.550	0.797	7,500	6,050	13,550
2002	1.570	0.540	1.020	12,560	4,860	17,420
2003	1.640	0.630	1.110	13,120	5,670	18,790
IN						
2001	1.300	0.750	1.080	1,170	450	1,620
2002	1.220	0.620	0.920	1,830	930	2,760
2003	1.320	0.780	1.150	2,244	624	2,868
MI						
2001	1.090	0.550	0.712	22,890	26,950	49,840
2002	1.210	0.610	0.816	26,620	25,620	52,240
2003	1.300	0.840	1.020	31,200	30,240	61,440
NJ						
2001	1.090	0.640	0.990	31,610	5,120	36,730
2002	1.170	0.700	1.110	43,290	3,500	46,790
2003	1.200	0.870	1.140	39,600	6,090	45,690
NY						
2001	1.200	0.500	1.180	1,740	25	1,765
2002	1.380	0.660	1.340	2,484	66	2,550
2003	1.300	0.850	1.290	2,535	43	2,578
NC						
2001	1.640	0.560	1.400	17,220	1,680	18,900
2002	1.760	0.630	1.450	19,888	2,646	22,534
2003	1.850	0.780	1.550	29,785	4,992	34,777
OR						
2001	0.820	0.380	0.546	8,938	6,840	15,778
2002	1.000	0.550	0.730	11,000	9,075	20,075
2003	1.090	0.700	0.872	11,990	9,800	21,790
WA						
2001	1.420	0.530	0.779	5,964	5,724	11,688
2002	1.220	0.580	0.688	2,684	6,264	8,948
2003	1.330	0.770	0.914	4,522	7,546	12,068
US						
2001	1.260	0.527	0.867	110,638	53,125	163,763
2002	1.420	0.595	1.030	141,114	53,018	194,132
2003	1.490	0.783	1.180	155,715	65,035	220,750
Wild Blueberries						
ME						
2001	1.400	0.300	0.305	490	22,455	22,945
2002	1.250	0.280	0.286	500	17,360	17,860
2003	1.350	0.350	0.355	540	27,930	28,470

¹ Small quantities of processed blueberries are included in fresh to avoid disclosure of individual operations.

**Berries: Harvested Acreage, Yield, Production, and Utilization
by Crop, State, and United States, 2001-2003**

Crop, State, and Year	Area Harvested	Yield Per Acre ¹	Production		Utilization	
			Total	Utilized	Fresh	Processed
	<i>Acres</i>	<i>Pounds</i>	<i>1,000 Pounds</i>	<i>1,000 Pounds</i>	<i>1,000 Pounds</i>	<i>1,000 Pounds</i>
Boysenberries						
CA ²						
2001	230	8,260	1,900	1,900		
2002	210	8,100	1,700	1,700		
2003	200	6,000	1,200	1,200		
OR						
2001	1,380	2,970	4,170	4,100	300	3,800
2002	1,200	3,000	3,630	3,600	200	3,400
2003	1,100	3,180	3,500	3,500	200	3,300
US ²						
2001	1,610	3,730	6,070	6,000		
2002	1,410	3,760	5,330	5,300		
2003	1,300	3,620	4,700	4,700		
Loganberries						
OR						
2001	70	1,570	120	110	10	100
2002	60	4,330	270	260	160	100
2003	60	3,670	220	220	70	150
Black Raspberries						
OR						
2001	1,200	3,180	3,950	3,810	10	3,800
2002	1,100	2,650	3,020	2,920	20	2,900
2003	1,100	2,360	2,700	2,600	10	2,590
Red Raspberries						
OR						
2001	2,700	5,890	15,900	15,900	1,300	14,600
2002	2,300	4,480	10,300	10,300	1,700	8,600
2003	2,300	3,830	8,800	8,800	1,900	6,900
WA						
2001	9,500	7,900	76,050	75,050	3,550	71,500
2002	9,500	7,800	74,100	74,100	5,200	68,900
2003	9,200	7,300	67,700	67,200	1,400	65,800
US						
2001	12,200	7,450	91,950	90,950	4,850	86,100
2002	11,800	7,150	84,400	84,400	6,900	77,500
2003	11,500	6,610	76,500	76,000	3,300	72,700
All Raspberries						
CA ²						
2001	2,300	10,900	25,000	25,000		
2002	2,400	12,200	29,200	29,200		
2003	2,500	12,400	31,000	31,000		

¹ Yield is based on utilized production.

² No breakdown of utilization available.

**Berries: Price and Value by Crop, State,
and United States, 2001-2003**

Crop, State, and Year	Price per Pound			Value of Production		
	Fresh	Processed	All	Fresh	Processed	Total
	<i>Dollars</i>	<i>Dollars</i>	<i>Dollars</i>	<i>1,000 Dollars</i>	<i>1,000 Dollars</i>	<i>1,000 Dollars</i>
Boysenberries						
CA ¹						
2001			0.816			1,550
2002			0.816			1,388
2003			0.891			1,069
OR						
2001	1.390	0.570	0.630	417	2,166	2,583
2002	1.290	0.540	0.582	258	1,836	2,094
2003	1.390	0.820	0.853	278	2,706	2,984
US ¹						
2001			0.689			4,133
2002			0.657			3,482
2003			0.862			4,053
Loganberries						
OR						
2001	1.540	0.350	0.455	15	35	50
2002	1.000	0.500	0.808	160	50	210
2003	1.330	0.800	0.968	93	120	213
Black Raspberries						
OR						
2001	1.380	0.450	0.452	14	1,710	1,724
2002	1.930	0.400	0.411	39	1,160	1,199
2003	1.820	1.360	1.360	18	3,522	3,540
Red Raspberries						
OR						
2001	1.220	0.450	0.513	1,586	6,570	8,156
2002	1.220	0.630	0.727	2,074	5,418	7,492
2003	1.280	0.700	0.825	2,432	4,830	7,262
WA						
2001	1.580	0.450	0.503	5,609	32,175	37,784
2002	1.150	0.450	0.499	5,980	31,005	36,985
2003	1.670	0.520	0.544	2,338	34,216	36,554
US						
2001	1.480	0.450	0.505	7,195	38,745	45,940
2002	1.170	0.470	0.527	8,054	36,423	44,477
2003	1.450	0.537	0.577	4,770	39,046	43,816
All Raspberries						
CA ¹						
2001			1.660			41,500
2002			1.400			40,851
2003			2.080			64,480

¹ No breakdown of utilization available.

**Oregon Blackberries: Harvested Acreage, Yield, Production, and
Utilization by Variety, 2001-2003**

Variety and Year	Area Harvested	Yield Per Acre ¹	Production		Utilization	
			Total	Utilized	Fresh	Processed
	<i>Acres</i>	<i>Pounds</i>	<i>1,000 Pounds</i>	<i>1,000 Pounds</i>	<i>1,000 Pounds</i>	<i>1,000 Pounds</i>
Cultivated Blackberries (OR)						
Marion						
2001	4,400	6,230	28,100	27,400	900	26,500
2002	4,600	7,040	33,000	32,400	300	32,100
2003	4,500	6,220	28,400	28,000	400	27,600
Evergreen						
2001	1,300	6,770	10,000	8,800	200	8,600
2002	1,200	6,420	8,200	7,700	300	7,400
2003	1,100	6,090	6,800	6,700	200	6,500
Other						
2001	720	8,060	5,870	5,800	300	5,500
2002	1,100	8,550	9,400	9,400	900	8,500
2003	1,100	9,640	10,700	10,600	1,800	8,800
All						
2001	6,420	6,540	43,970	42,000	1,400	40,600
2002	6,900	7,170	50,600	49,500	1,500	48,000
2003	6,700	6,760	45,900	45,300	2,400	42,900

¹ Yield is based on utilized production.

Oregon Blackberries: Price and Value by Variety, 2001-2003

Variety and Year	Price per Pound			Value of Production		
	Fresh	Processed	All	Fresh	Processed	Total
	<i>Dollars</i>	<i>Dollars</i>	<i>Dollars</i>	<i>1,000 Dollars</i>	<i>1,000 Dollars</i>	<i>1,000 Dollars</i>
Cultivated Blackberries (OR)						
Marion						
2001	0.990	0.430	0.448	891	11,395	12,286
2002	1.160	0.415	0.422	348	13,322	13,670
2003	1.160	0.680	0.687	464	18,768	19,232
Evergreen						
2001	1.020	0.260	0.277	204	2,236	2,440
2002	0.930	0.285	0.310	279	2,109	2,388
2003	0.990	0.690	0.699	198	4,485	4,683
Other						
2001	1.500	0.410	0.466	450	2,255	2,705
2002	1.170	0.560	0.618	1,053	4,760	5,813
2003	1.100	0.630	0.710	1,980	5,544	7,524
All						
2001	1.100	0.391	0.415	1,545	15,886	17,431
2002	1.120	0.421	0.442	1,680	20,191	21,871
2003	1.100	0.671	0.694	2,642	28,797	31,439

**Sweet Cherries: Bearing Acreage, Yield, Production, and Utilization
by State and United States, 2001-2003 ¹**

State and Year	Bearing Acreage	Yield Per Acre ²	Production		Utilization	
			Total	Utilized	Fresh	Processed
	<i>Acres</i>	<i>Tons</i>	<i>Tons</i>	<i>Tons</i>	<i>Tons</i>	<i>Tons</i>
CA						
2001	25,000	2.21	55,300	51,100	41,300	9,800
2002	26,000	2.13	55,500	53,700	43,300	10,400
2003	27,000	2.30	62,000	60,100	46,800	13,300
ID						
2001			1,400	1,390		
2002			1,700	1,700		
2003			2,900	2,900		
MI						
2001	7,400	3.11	23,000	23,000	1,000	22,000
2002	8,100	0.33	2,700	2,600	200	2,400
2003	8,100	1.60	13,000	13,000	1,000	12,000
MT						
2001			2,300	1,850		
2002			2,220	2,080		
2003			1,920	1,730		
NY						
2001	700	1.57	1,100	1,050		
2002	700	0.50	350	350		
2003	700	0.86	600	570		
OR						
2001	11,000	3.64	40,000	34,000	15,500	18,500
2002	12,000	2.58	31,000	29,000	13,000	16,000
2003	12,000	3.17	38,000	38,000	21,000	17,000
PA						
2001			580	580	580	
2002			355	355	355	
2003			340	340	340	
UT						
2001	600	1.17	700	650	300	350
2002	600	0.67	400	380	140	240
2003	600	3.67	2,200	2,000	1,000	1,000
WA						
2001	22,000	4.82	106,000	106,000	84,000	22,000
2002	25,000	3.48	87,000	87,000	66,000	21,000
2003	26,000	4.46	116,000	116,000	96,000	20,000
US						
2001	68,270	3.37	230,380	219,620	145,710	73,910
2002	73,920	2.45	181,225	177,165	126,455	50,710
2003	75,890	3.12	236,960	234,640	170,200	64,440

¹ Missing data not published to avoid disclosure of individual operations.

² Yield is based on total production.

**Sweet Cherries: Price and Value by State
and United States, 2001-2003¹**

State and Year	Price per Ton			Value of Production		
	Fresh	Processed	All	Fresh	Processed	All
	<i>Dollars</i>	<i>Dollars</i>	<i>Dollars</i>	<i>1,000 Dollars</i>	<i>1,000 Dollars</i>	<i>1,000 Dollars</i>
CA						
2001	1,840.00	390.00	1,560.00	75,992	3,822	79,814
2002	2,090.00	271.00	1,740.00	90,497	2,818	93,315
2003	1,930.00	384.00	1,590.00	90,324	5,107	95,431
ID						
2001			1,300.00			1,802
2002			1,490.00			2,533
2003			1,400.00			4,057
MI						
2001	1,280.00	446.00	482.00	1,280	9,812	11,092
2002	2,540.00	714.00	855.00	508	1,714	2,222
2003	2,230.00	786.00	897.00	2,230	9,432	11,662
MT						
2001			1,130.00			2,082
2002			1,820.00			3,791
2003			1,670.00			2,884
NY						
2001			1,530.00			1,610
2002			1,730.00			605
2003			1,950.00			1,112
OR						
2001	1,000.00	709.00	842.00	15,500	13,117	28,617
2002	1,190.00	722.00	932.00	15,470	11,552	27,022
2003	1,320.00	803.00	1,090.00	27,720	13,651	41,371
PA						
2001	2,260.00		2,260.00	1,311		1,311
2002	2,480.00		2,480.00	880		880
2003	2,360.00		2,360.00	802		802
UT						
2001	1,200.00	440.00	791.00	360	154	514
2002	2,300.00	1,100.00	1,540.00	322	264	586
2003	1,200.00	600.00	900.00	1,200	600	1,800
WA						
2001	1,580.00	516.00	1,360.00	132,720	11,352	144,072
2002	1,990.00	566.00	1,650.00	131,340	11,886	143,226
2003	1,640.00	512.00	1,450.00	157,440	10,240	167,680
US						
2001	1,590.00	527.00	1,230.00	231,989	38,925	270,914
2002	1,940.00	562.00	1,550.00	245,660	28,520	274,180
2003	1,690.00	618.00	1,390.00	286,996	39,803	326,799

¹ Missing data not published to avoid disclosure of individual operations.

**Tart Cherries: Bearing Acreage, Yield, Production, and Utilization
by State and United States, 2001-2003 ¹**

State and Year	Bearing Acreage	Yield Per Acre ²	Production		Utilization	
			Total	Utilized	Fresh	Processed
	<i>Acres</i>	<i>Pounds</i>	<i>Million Pounds</i>	<i>Million Pounds</i>	<i>Million Pounds</i>	<i>Million Pounds</i>
CO						
2001			0.6	0.6		
2002			0.3	0.3		
2003			0.6	0.6		
MI						
2001	28,000	10,600	297.0	242.0	1.0	241.0
2002	27,500	545	15.0	15.0	0.1	14.9
2003	27,000	5,700	154.0	154.0	0.5	153.5
NY						
2001	2,000	7,350	14.7	14.1	0.1	14.0
2002	2,000	6,350	12.7	12.7	0.1	12.6
2003	2,000	3,600	7.2	7.2		
OR						
2001	1,300	1,850	2.4	2.3		
2002	1,000	3,200	3.2	3.1		
2003	900	1,560	1.4	1.4		
PA						
2001	1,200	3,250	3.9	3.9		
2002	1,200	3,170	3.8	3.8		
2003	1,000	3,900	3.9	3.9		
UT						
2001	2,800	4,290	12.0	11.5		11.5
2002	2,800	1,070	3.0	2.8		2.8
2003	2,800	9,290	26.0	26.0		26.0
WA						
2001			26.5	20.5		
2002			20.5	20.5		
2003			20.1	20.1		
WI						
2001	2,100	6,190	13.0	13.0	0.2	12.8
2002	2,100	1,900	4.0	4.0	0.2	3.8
2003	1,900	7,000	13.3	13.3	0.2	13.1
US						
2001	39,140	9,460	370.1	307.9	1.9	306.0
2002	38,300	1,630	62.5	62.2	0.8	61.4
2003	37,300	6,070	226.5	226.5	1.0	225.5

¹ Missing data not published to avoid disclosure of individual operations.

² Yield is based on total production.

**Tart Cherries: Price and Value by State
and United States, 2001-2003 ¹**

State and Year	Price per Pound			Value of Production		
	Fresh	Processed	All	Fresh	Processed	All
	<i>Dollars</i>	<i>Dollars</i>	<i>Dollars</i>	<i>1,000 Dollars</i>	<i>1,000 Dollars</i>	<i>1,000 Dollars</i>
CO						
2001			0.333			200
2002			0.400			120
2003			0.380			228
MI						
2001	0.550	0.182	0.184	550	43,862	44,412
2002	0.700	0.478	0.479	70	7,122	7,192
2003	0.750	0.390	0.391	375	59,865	60,240
NY						
2001	1.030	0.190	0.196	103	2,660	2,763
2002	1.200	0.500	0.506	120	6,300	6,420
2003			0.314			2,262
OR						
2001			0.257			591
2002			0.370			1,147
2003			0.361			505
PA						
2001			0.127			497
2002			0.558			2,121
2003			0.434			1,694
UT						
2001		0.218	0.218		2,507	2,507
2002		0.240	0.240		672	672
2003		0.270	0.270		7,020	7,020
WA						
2001			0.172			3,526
2002			0.398			8,159
2003			0.323			6,492
WI						
2001	0.470	0.200	0.204	94	2,560	2,654
2002	0.550	0.510	0.512	110	1,938	2,048
2003	0.550	0.410	0.412	110	5,371	5,481
US						
2001	0.538	0.183	0.186	1,022	56,128	57,150
2002	0.845	0.443	0.448	676	27,203	27,879
2003	0.744	0.369	0.371	744	83,178	83,922

¹ Missing data not published to avoid disclosure of individual operations.

**Sweet and Tart Cherries: Processed Utilization, Use,
and Price by State and United States, 2001-2003**

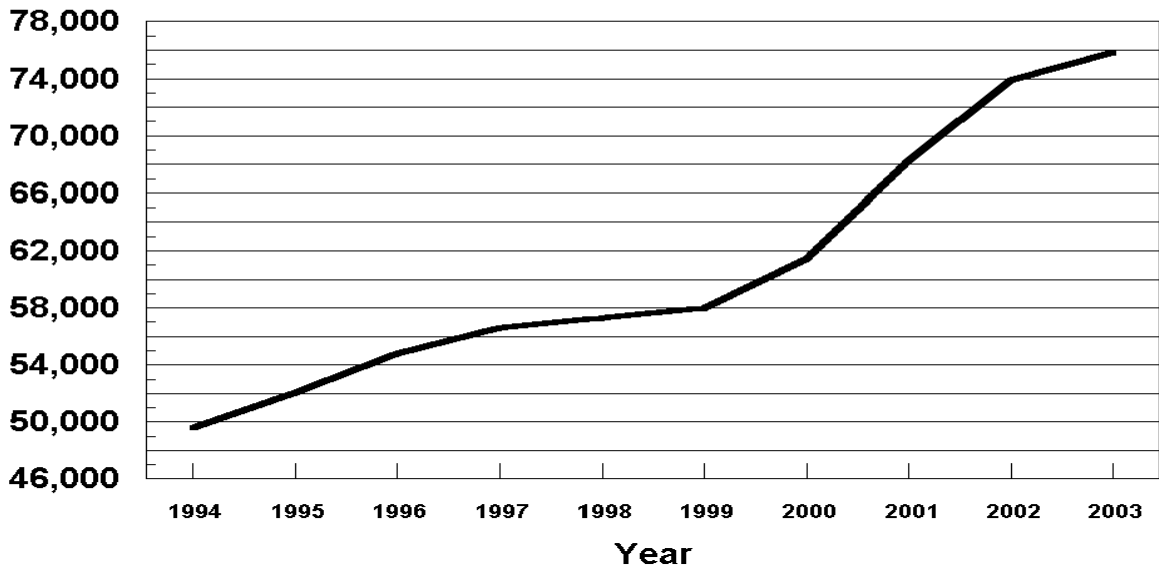
Crop, Use, and State	Processed Utilization					
	Quantity			Price per Unit		
	2001	2002	2003	2001	2002	2003
	<i>Tons</i>	<i>Tons</i>	<i>Tons</i>	<i>Dollars per Ton</i>	<i>Dollars per Ton</i>	<i>Dollars per Ton</i>
Sweet Cherries						
Canned						
MI	700	280	1,500	450.00	1,000.00	920.00
OR	3,800	2,000	1,500	975.00	1,100.00	1,100.00
WA	4,500	3,500	4,000	1,020.00	1,040.00	810.00
US	9,000	5,780	7,000	957.00	1,059.00	896.00
Brined						
MI	15,500	1,700	8,000	440.00	630.00	675.00
OR	13,000	12,000	14,000	642.00	650.00	770.00
WA	11,000	11,000	10,000	468.00	500.00	420.00
Oth Sts	8,680	7,440	11,280	466.00	399.00	528.00
US	48,180	32,140	43,280	506.00	540.00	609.00
Other ¹						
MI	5,800	420	2,500	460.00	864.00	1,060.00
OR	1,700	2,000	1,500	625.00	773.00	810.00
WA	6,500	6,500	6,000	248.00	423.00	465.00
Oth Sts	2,730	3,870	4,160	219.00	104.00	124.00
US	16,730	12,790	14,160	355.00	396.00	506.00
	<i>Million Pounds</i>	<i>Million Pounds</i>	<i>Million Pounds</i>	<i>Dollars per Pound</i>	<i>Dollars per Pound</i>	<i>Dollars per Pound</i>
Tart Cherries						
Canned						
MI	80.0	6.5	63.0	0.179	0.460	0.410
Oth Sts	11.9	10.9	7.9	0.170	0.518	0.376
US	91.9	17.4	70.9	0.178	0.497	0.406
Frozen						
MI	151.0	8.0	85.0	0.189	0.500	0.380
Oth Sts	25.8	20.9	53.9	0.206	0.482	0.333
US	176.8	28.9	138.9	0.191	0.487	0.362
Other ²						
MI	10.0	0.4	5.5	0.098	0.340	0.328
Oth Sts	27.3	14.7	10.2	0.181	0.297	0.236
US	37.3	15.1	15.7	0.159	0.298	0.268

¹ Includes California canned utilization and other processed utilizations (frozen, juice, etc.) from all States.

² Juice, wine, brined, and dried.

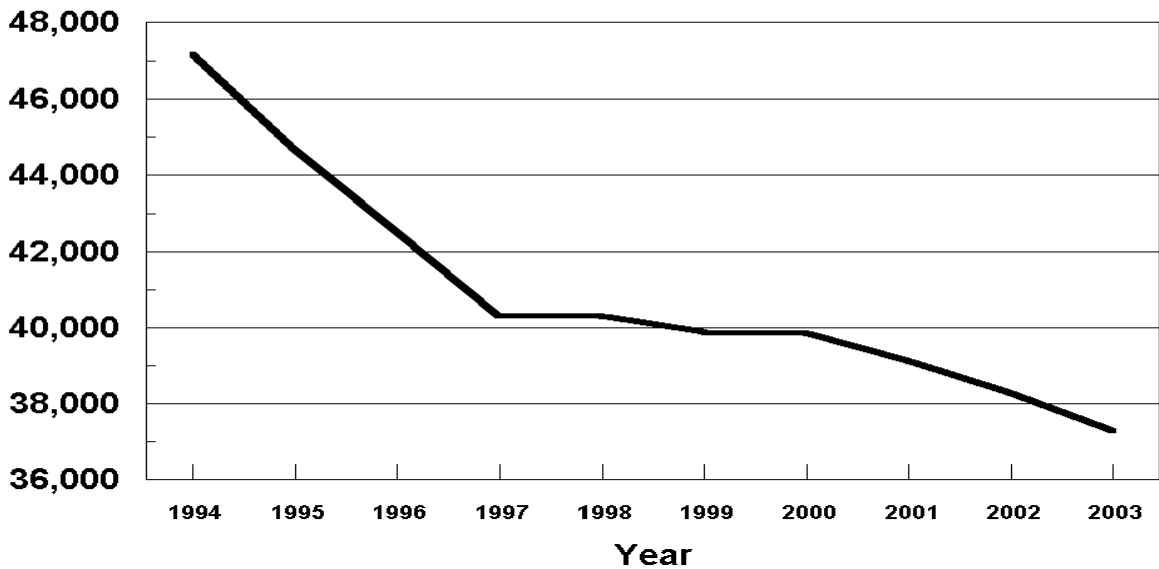
U. S. Sweet Cherries

Bearing Acres 1994 - 2003



U. S. Tart Cherries

Bearing Acres 1994 - 2003



**Cranberries: Area Harvested, Yield, Production and Utilization
by State and United States, 2001-2003**

Year and State	Area Harvested	Yield per Acre ¹	Production		Utilization	
			Total	Utilized	Fresh	Processed
	<i>Acres</i>	<i>Barrels</i> ²	<i>Barrels</i> ²	<i>Barrels</i> ²		
2001						
MA	12,000	118.0	1,416,000	1,414,000	176,000	1,238,000
NJ	3,100	182.6	566,000	412,000		412,000
OR	2,400	152.1	365,000	355,000	7,000	348,000
WA	1,600	88.8	142,000	136,000	34,000	102,000
WI	15,100	188.1	2,840,000	2,466,000	209,000	2,257,000
US	34,200	155.8	5,329,000	4,783,000	426,000	4,357,000
2002						
MA	14,500	100.1	1,452,000	1,452,000	154,000	1,298,000
NJ	3,100	138.7	430,000	430,000		430,000
OR	2,800	154.3	432,000	432,000	9,000	423,000
WA	1,600	101.3	162,000	155,000	30,000	125,000
WI	15,900	201.8	3,208,000	3,208,000	177,000	3,031,000
US	37,900	150.0	5,684,000	5,677,000	370,000	5,307,000
2003						
MA	14,400	97.2	1,400,000	1,400,000	100,000	1,300,000
NJ	3,200	150.0	480,000	480,000		480,000
OR	2,800	169.6	475,000	475,000	9,000	466,000
WA	1,600	115.6	185,000	185,000	30,000	155,000
WI	17,400	205.2	3,570,000	3,570,000	195,000	3,375,000
US	39,400	155.1	6,110,000	6,110,000	334,000	5,776,000

¹ Yield is based on total production.

² A barrel weighs 100 pounds.

**Cranberries: Utilization, Price, and Value
by State and United States, 2001-2003**

Year and State	Price per Barrel ^{1 2}			Value of Utilized Production		
	Fresh	Processed	All	Fresh	Processed	All
	<i>Dollars</i>	<i>Dollars</i>	<i>Dollars</i>	<i>1,000 Dollars</i>	<i>1,000 Dollars</i>	<i>1,000 Dollars</i>
2001						
MA	40.50	21.60	24.00	7,128	26,741	33,869
NJ		23.10	23.10		9,517	9,517
OR	43.30	22.10	22.50	303	7,691	7,994
WA	43.30	23.20	28.20	1,472	2,366	3,838
WI	40.90	22.10	23.70	8,548	49,880	58,428
US	41.00	22.10	23.80	17,451	96,195	113,646
2002						
MA	48.80	28.90	31.00	7,515	37,512	45,027
NJ		29.00	29.00		12,470	12,470
OR	46.80	30.10	30.40	421	12,732	13,153
WA	50.90	29.70	33.80	1,527	3,713	5,240
WI	49.30	28.60	29.70	8,726	86,687	95,413
US	49.20	28.90	30.20	18,189	153,114	171,303
2003						
MA	52.70	30.50	32.10	5,270	39,650	44,920
NJ		29.60	29.60		14,208	14,208
OR	54.20	31.90	32.30	488	14,865	15,353
WA	50.60	30.20	33.50	1,518	4,681	6,199
WI	49.80	30.70	31.70	9,711	103,613	113,324
US	50.90	30.60	31.80	16,987	177,017	194,004

¹ Weighted average of co-op and independent sales. Co-op prices represent pool proceeds less returns for processing non-cranberry products, capital stock dividends, capital stock retains, and other retains.

² A barrel weighs 100 pounds.

**Grapes: Bearing Acreage and Yield by Type,
State, and United States, 2001-2003**

State and Type	Bearing Acreage			Yield per Acre ¹		
	2001	2002	2003	2001	2002	2003
	<i>Acres</i>	<i>Acres</i>	<i>Acres</i>	<i>Tons</i>	<i>Tons</i>	<i>Tons</i>
AZ	3,200	2,400	2,100	4.84	3.50	3.81
AR	1,500	1,400	1,400	1.80	4.00	2.14
CA						
All Types	803,000	820,000	823,000	7.45	8.17	6.91
Wine	480,000	486,000	479,000	6.36	6.48	6.05
Table	88,000	88,000	89,000	8.10	8.44	7.75
Raisin ²	235,000	246,000	255,000	9.43	11.40	8.20
GA	1,100	1,100	1,100	2.91	2.55	2.82
MI	12,300	12,300	12,600	2.35	3.47	7.50
MO	870	800	850	2.64	3.63	3.29
NY	31,500	31,000	31,000	4.73	5.03	6.52
NC	700	850	950	2.86	2.71	2.95
OH	2,000	2,100	2,200	3.00	2.76	3.68
OR	8,800	9,400	10,100	2.59	2.34	2.38
PA	12,800	12,800	11,000	4.80	4.16	7.73
TX	2,900	2,900	2,900	3.28	1.62	2.07
VA	1,700	1,800	1,900	2.47	2.56	2.42
WA						
All Types	48,000	49,800	52,000	5.90	6.67	6.62
Wine	24,000	24,800	27,000	4.17	4.64	4.15
Juice	24,000	25,000	25,000	7.63	8.68	9.28
US	930,370	948,650	953,100	7.06	7.74	6.80

¹ Yield is based on total production.

² The Raisin Industry Diversion Program (RID) was implemented in 2001 and 2002. Acres enrolled were 41,000 for 2001, and 27,000 for 2002. These acres were deducted from bearing acres. No RID program was implemented for 2003.

**Grapes: Total and Utilized Production, Price, and Value
by Type, State, and United States, 2001-2003**

State and Type	Total Production			Utilized Production		
	2001	2002	2003	2001	2002	2003
	<i>Tons</i>	<i>Tons</i>	<i>Tons</i>	<i>Tons</i>	<i>Tons</i>	<i>Tons</i>
AZ	15,500	8,400	8,000	15,500	8,400	8,000
AR	2,700	5,600	3,000	2,500	5,400	2,900
CA						
All Types	5,979,000	6,696,000	5,690,000	5,979,000	6,696,000	5,615,000
Wine	3,051,000	3,149,000	2,900,000	3,051,000	3,149,000	2,900,000
Table ¹	713,000	743,000	690,000	713,000	743,000	636,000
Raisin ¹	2,215,000	2,804,000	2,100,000	2,215,000	2,804,000	2,079,000
GA	3,200	2,800	3,100	3,200	2,760	2,800
MI	28,900	42,700	94,500	28,500	42,500	80,500
MO	2,300	2,900	2,800	2,300	2,900	2,800
NY	149,000	156,000	202,000	149,000	155,000	156,000
NC	2,000	2,300	2,800	2,000	2,300	2,800
OH	6,000	5,800	8,100	6,000	5,800	7,000
OR	22,800	22,000	24,000	22,800	22,000	24,000
PA	61,500	53,200	85,000	61,500	53,200	68,000
TX	9,500	4,700	6,000	9,300	4,400	5,800
VA	4,200	4,600	4,600	3,800	4,200	4,100
WA						
All Types	283,000	332,000	344,000	283,000	332,000	344,000
Wine	100,000	115,000	112,000	100,000	115,000	112,000
Juice	183,000	217,000	232,000	183,000	217,000	232,000
US	6,569,600	7,339,000	6,477,900	6,568,400	7,336,860	6,323,700
	Price per Ton			Value of Utilized Production		
	2001	2002	2003	2001	2002	2003
	<i>Dollars</i>	<i>Dollars</i>	<i>Dollars</i>	<i>1,000 Dollars</i>	<i>1,000 Dollars</i>	<i>1,000 Dollars</i>
AZ	576.00	947.00	1,030.00	8,921	7,953	8,204
AR	541.00	462.00	521.00	1,353	2,495	1,510
CA						
All Types	446.00	383.00	402.00	2,666,579	2,566,918	2,257,275
Wine	597.00	535.00	517.00	1,820,106	1,683,452	1,498,100
Table ¹	610.00	616.00	619.00	435,177	457,628	393,487
Raisin ¹	186.00	152.00	176.00	411,296	425,838	365,688
GA	1,050.00	1,060.00	978.00	3,370	2,936	2,738
MI	355.00	347.00	291.00	10,110	14,757	23,440
MO	630.00	615.00	608.00	1,448	1,783	1,701
NY	320.00	307.00	247.00	47,668	47,620	38,556
NC	1,270.00	1,280.00	1,180.00	2,532	2,934	3,314
OH	374.00	407.00	399.00	2,241	2,363	2,790
OR	1,480.00	1,470.00	1,460.00	33,744	32,340	35,040
PA	304.00	294.00	262.00	18,709	15,615	17,829
TX	900.00	910.00	900.00	8,370	4,004	5,220
VA	1,260.00	1,350.00	1,350.00	4,788	5,670	5,535
WA						
All Types	488.00	405.00	381.00	138,195	134,605	131,112
Wine	897.00	878.00	920.00	89,700	100,970	103,040
Juice	265.00	155.00	121.00	48,495	33,635	28,072
US	449.00	387.00	401.00	2,948,028	2,841,993	2,534,264

¹ Fresh equivalent of dried and not dried.

**Grapes: Fresh and Processed Utilization, and Price
by Type, State, and United States, 2001-2003 ¹**

Utilization, State, and Type	Fresh and Processed Utilization					
	Quantity			Price per Ton		
	2001	2002	2003	2001	2002	2003
	<i>Tons</i>	<i>Tons</i>	<i>Tons</i>	<i>Dollars</i>	<i>Dollars</i>	<i>Dollars</i>
Fresh						
AZ	10,200			740.00		
CA						
All Types	849,000	971,000	809,000	688.00	681.00	686.00
Wine	45,000	45,000	45,000	300.00	300.00	300.00
Table	587,000	662,000	559,000	720.00	680.00	690.00
Raisin	217,000	264,000	205,000	680.00	750.00	760.00
GA	1,700			1,100.00		
MI	300	300	500	800.00	800.00	800.00
MO	100	240	150	840.00	780.00	600.00
NY	1,000	2,000	3,000	900.00	860.00	714.00
NC		300	300		1,780.00	1,630.00
OH	100	100	100	760.00	940.00	580.00
PA	1,000	1,000	1,000	680.00	790.00	744.00
Oth Sts	1,000	7,500	8,600	1,230.00	1,160.00	1,200.00
US	864,400	982,440	822,650	690.00	686.00	692.00
Processed						
AZ	5,300			259.00		
CA						
All Types	5,130,000	5,725,000	4,806,000	406.00	333.00	354.00
Wine	3,006,000	3,104,000	2,855,000	601.00	538.00	520.00
Table	126,000	81,000	77,000	99.50	92.20	101.00
Raisin	1,998,000	2,540,000	1,874,000	132.00	89.70	112.00
GA	1,500			1,000.00		
MI	28,200	42,200	80,000	350.00	344.00	288.00
MO	2,200	2,660	2,650	620.00	600.00	608.00
NY	148,000	153,000	153,000	316.00	300.00	238.00
NC		2,000	2,500		1,200.00	1,130.00
OH	5,900	5,700	6,900	367.00	398.00	396.00
OR ²	22,800	22,000	24,000	1,480.00	1,470.00	1,460.00
PA	60,500	52,200	67,000	298.00	284.00	255.00
TX ²	9,300	4,400	5,800	900.00	910.00	900.00
VA	3,800	4,200	4,100	1,260.00	1,350.00	1,350.00
WA						
All Types	283,000	332,000	344,000	488.00	405.00	381.00
Wine	100,000	115,000	112,000	897.00	878.00	920.00
Juice	183,000	217,000	232,000	265.00	155.00	121.00
Oth Sts	3,500	9,060	5,100	758.00	520.00	422.00
US	5,704,000	6,354,420	5,501,050	412.00	341.00	357.00

¹ Missing data included in Other States to avoid disclosure of individual operations.

² Includes small quantities sold fresh.

**Grapes: Fresh and Processed Value by Type,
State, and United States, 2001-2003¹**

Utilization, State, and Type	Fresh and Processed Utilization		
	Value of Utilized Production		
	2001	2002	2003
	<i>1,000 Dollars</i>	<i>1,000 Dollars</i>	<i>1,000 Dollars</i>
Fresh			
AZ	7,548		
CA			
All Types	583,700	661,660	555,010
Wine	13,500	13,500	13,500
Table	422,640	450,160	385,710
Raisin	147,560	198,000	155,800
GA	1,870		
MI	240	240	400
MO	84	187	90
NY	900	1,720	2,142
NC		534	489
OH	76	94	58
PA	680	790	744
Oth Sts	1,232	8,674	10,298
US	596,330	673,899	569,231
Processed			
AZ	1,373		
CA			
All Types	2,082,879	1,905,258	1,702,265
Wine	1,806,606	1,669,952	1,484,600
Table	12,537	7,468	7,777
Raisin	263,736	227,838	209,888
GA	1,500		
MI	9,870	14,517	23,040
MO	1,364	1,596	1,611
NY	46,768	45,900	36,414
NC		2,400	2,825
OH	2,165	2,269	2,732
OR ²	33,744	32,340	35,040
PA	18,029	14,825	17,085
TX ²	8,370	4,004	5,220
VA	4,788	5,670	5,535
WA			
All Types	138,195	134,605	131,112
Wine	89,700	100,970	103,040
Juice	48,495	33,635	28,072
Oth Sts	2,653	4,710	2,154
US	2,351,698	2,168,094	1,965,033

¹ Missing data included in Other States to avoid disclosure of individual operations.

² Includes small quantities sold fresh.

**Grapes: Processed Utilization, Use, and Price
by Type, State, and United States, 2001-2003**

Use and State	Processed Utilization					
	Quantity			Price per Ton		
	2001	2002	2003	2001	2002	2003
	<i>Tons</i>	<i>Tons</i>	<i>Tons</i>	<i>Dollars</i>	<i>Dollars</i>	<i>Dollars</i>
Canned						
CA						
Raisin	29,000	31,000	27,000	270.00	270.00	280.00
US	29,000	31,000	27,000	270.00	270.00	280.00
Juice ^{1 2}						
MI	26,000	39,200	78,000	300.00	300.00	275.00
NY	107,000	109,000	90,000	287.00	272.00	198.00
OH	4,700	4,500	5,400	301.00	314.00	315.00
PA	48,500	45,900	42,000	293.00	284.00	248.00
WA	183,000	217,000	232,000	265.00	155.00	121.00
Oth Sts	650	2,200	1,400	298.00	282.00	429.00
US	369,850	417,800	448,800	278.00	216.00	178.00
Wine						
CA						
All Types	3,369,000	3,787,000	3,215,000	546.00	455.00	472.00
Wine	3,006,000	3,104,000	2,855,000	601.00	538.00	520.00
Table	101,000	61,000	60,000	87.20	80.50	90.00
Raisin	262,000	622,000	300,000	85.70	75.50	90.00
GA	1,500			1,000.00		
MI	2,200	3,000	2,000	940.00	920.00	780.00
MO	2,150	2,460	2,350	620.00	600.00	590.00
NY	41,000	44,000	63,000	391.00	369.00	295.00
NC		2,000	2,500		1,200.00	1,130.00
OH	1,200	1,200	1,500	623.00	713.00	686.00
OR ²	22,800	22,000	24,000	1,480.00	1,470.00	1,460.00
PA	12,000	6,300	25,000	319.00	288.00	266.00
TX ²	9,300	4,400	5,800	900.00	910.00	900.00
VA	3,800	4,200	4,100	1,260.00	1,350.00	1,350.00
WA	100,000	115,000	112,000	897.00	878.00	920.00
Oth Sts ³	3,400	7,060	4,000	826.00	596.00	445.00
US	3,568,350	3,998,620	3,461,250	562.00	474.00	491.00
Dried						
(Fr Basis)						
AZ ⁴	4,800			220.00		
CA						
All Types	1,732,000	1,907,000	1,564,000	137.00	91.80	113.00
Table	25,000	20,000	17,000	149.00	128.00	139.00
Raisin	1,707,000	1,887,000	1,547,000	137.00	91.40	113.00
US	1,736,800	1,907,000	1,564,000	137.00	91.80	113.00

¹ Includes small quantities of other processed (jam, jelly, etc.).

² Includes small quantities for other uses.

³ AZ grapes dried for raisins in 2002 and 2003 are included to avoid disclosure of individual operations.

⁴ AZ grapes dried for raisins in 2002 and 2003 are included with wine utilization to avoid disclosure of individual operations.

**Concord Grapes: Processed Utilization by State
and United States, 2001-2003 ¹**

State	Processed Utilization		
	2001	2002	2003
	<i>Tons</i>	<i>Tons</i>	<i>Tons</i>
MI	19,000	25,300	51,000
MO	300		
NY	107,200	108,000	86,000
OH	4,300	4,000	5,100
PA	52,000	44,800	55,800
WA	167,000	199,000	212,000
Oth Sts	810	2,700	1,100
US	350,610	383,800	411,000

¹ Missing data included in Other States to avoid disclosure of individual operations.

**Niagara Grapes: Processed Utilization by State
and United States, 2001-2003**

State	Processed Utilization		
	2001	2002	2003
	<i>Tons</i>	<i>Tons</i>	<i>Tons</i>
MI	7,000	13,900	27,000
NY	15,100	19,000	11,000
OH	350	500	500
PA	4,500	4,200	6,200
WA	16,000	18,000	20,000
US	42,950	55,600	64,700

**Peaches: Bearing Acreage and Yield by Type,
State, and United States, 2001-2003**

State	Bearing Acreage			Yield per Acre ¹		
	2001	2002	2003	2001	2002	2003
	<i>Acres</i>	<i>Acres</i>	<i>Acres</i>	<i>Pounds</i>	<i>Pounds</i>	<i>Pounds</i>
AL	3,500	3,400	3,400	6,570	7,500	2,940
AR	3,000	2,800	2,700	4,000	3,570	5,560
CA						
All	67,800	70,000	70,000	25,500	27,400	26,700
Clingstone	28,800	31,000	31,000	33,100	36,300	34,600
Freestone	39,000	39,000	39,000	19,900	20,400	20,500
CO	1,900	1,900	1,900	9,470	10,000	11,100
CT	330	330	330	5,760	3,940	4,550
GA	15,000	14,000	13,500	9,330	7,140	8,890
ID	820	820	820	15,900	15,900	15,900
IL	1,600	1,600	1,600	11,100	10,800	12,800
IN	650	650	650	4,620	4,770	5,230
KY	280	240	240	6,430	5,000	7,500
LA	310	300	290	4,520	5,000	5,520
MD	1,100	1,000	1,100	8,000	7,000	7,730
MA	350	370	380	6,290	6,220	7,890
MI	4,600	5,000	5,000	9,130	2,800	9,400
MO	1,600	1,800	1,600	5,630	4,440	6,250
NJ	8,000	8,000	8,000	9,380	7,750	8,750
NY	1,600	1,700	1,700	7,810	5,880	7,650
NC	1,200	1,200	1,200	2,920	8,330	5,000
OH	1,000	1,200	1,300	11,200	7,830	8,690
OK	1,300	1,400	1,400	9,230	5,000	3,570
OR	950	800	800	6,840	9,880	5,630
PA	4,200	4,200	3,800	17,900	14,300	19,200
SC	16,000	16,000	15,000	6,250	10,000	6,670
TN	600	500	500	6,170	8,000	7,000
TX	7,500	7,500	6,500	4,000	1,600	1,080
UT	1,300	1,300	1,300	6,920	5,000	6,920
VA	1,260	1,260	1,260	6,350	5,560	7,940
WA	2,700	2,800	2,800	20,400	23,600	18,600
WV	1,200	1,100	1,100	9,170	9,090	11,400
US	151,650	153,170	150,170	16,000	16,800	16,800

¹ Yield is based on total production.

**Peaches: Total and Utilized Production, by Type,
State, and United States, 2001-2003**

State	Total Production			Utilized Production		
	2001	2002	2003	2001	2002	2003
	<i>Million Pounds</i>	<i>Million Pounds</i>	<i>Million Pounds</i>	<i>Million Pounds</i>	<i>Million Pounds</i>	<i>Million Pounds</i>
AL	23.0	25.5	10.0	22.0	23.0	8.6
AR	12.0	10.0	15.0	10.3	7.8	13.6
CA						
All	1,727.0	1,920.0	1,870.0	1,677.0	1,870.0	1,809.0
Clingstone	952.0	1,124.0	1,072.0	902.0	1,074.0	1,011.0
Freestone	775.0	796.0	798.0	775.0	796.0	798.0
CO	18.0	19.0	21.0	17.5	18.5	20.0
CT	1.9	1.3	1.5	1.9	1.3	1.5
GA	140.0	100.0	120.0	125.0	92.0	116.0
ID	13.0	13.0	13.0	12.9	13.0	12.6
IL	17.8	17.2	20.5	17.1	16.5	19.8
IN	3.0	3.1	3.4	2.9	3.0	3.3
KY	1.8	1.2	1.8	1.8	1.2	1.8
LA	1.4	1.5	1.6	1.3	1.4	1.5
MD	8.8	7.0	8.5	8.8	7.0	8.5
MA	2.2	2.3	3.0	2.1	2.2	2.7
MI	42.0	14.0	47.0	42.0	14.0	43.0
MO	9.0	8.0	10.0	9.0	8.0	10.0
NJ	75.0	62.0	70.0	70.0	57.0	62.0
NY	12.5	10.0	13.0	12.0	10.0	12.0
NC	3.5	10.0	6.0	3.5	10.0	6.0
OH	11.2	9.4	11.3	11.0	9.1	11.0
OK	12.0	7.0	5.0	10.3	5.8	4.8
OR	6.5	7.9	4.5	6.4	7.4	3.5
PA	75.0	60.0	73.0	74.0	59.0	71.0
SC	100.0	160.0	100.0	85.0	130.0	80.0
TN	3.7	4.0	3.5	3.5	3.7	3.2
TX	30.0	12.0	7.0	26.0	11.4	6.7
UT	9.0	6.5	9.0	8.9	6.5	8.7
VA	8.0	7.0	10.0	7.0	6.7	9.2
WA	55.0	66.0	52.0	55.0	66.0	52.0
WV	11.0	10.0	12.5	10.7	10.0	11.8
US	2,433.3	2,574.9	2,523.1	2,334.9	2,471.5	2,413.8

**Peaches: Price and Value by Type, State,
and United States, 2001-2003**

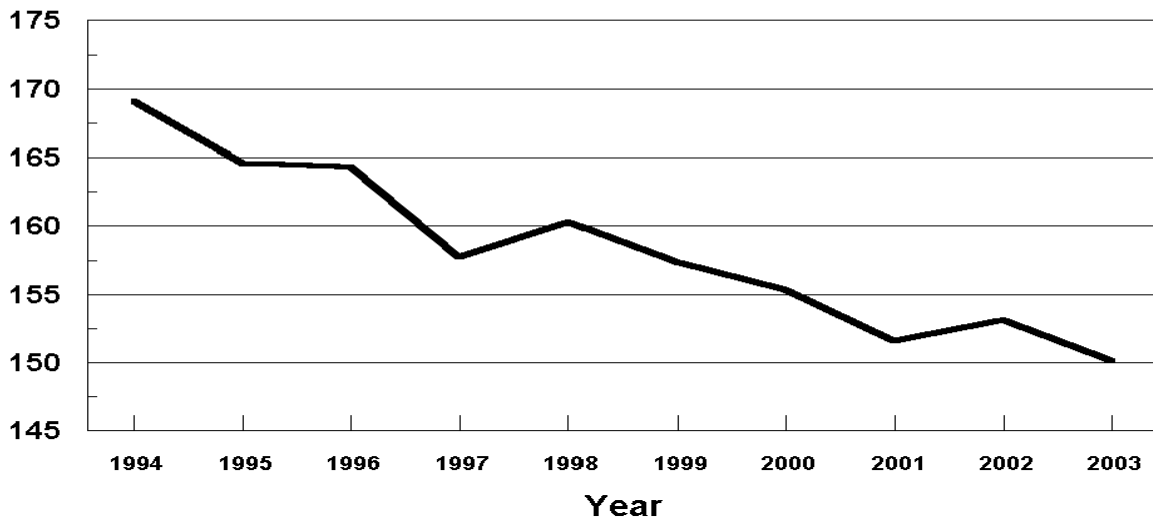
State	Price per Pound			Value of Utilized Production		
	2001	2002	2003	2001	2002	2003
	<i>Dollars</i>	<i>Dollars</i>	<i>Dollars</i>	<i>1,000 Dollars</i>	<i>1,000 Dollars</i>	<i>1,000 Dollars</i>
AL	0.418	0.440	0.470	9,196	10,120	4,042
AR	0.407	0.428	0.480	4,193	3,336	6,525
CA						
All	0.147	0.145	0.134	246,743	271,008	241,792
Clingstone	0.122	0.124	0.108	110,044	132,639	108,683
Freestone	0.176	0.174	0.167	136,699	138,369	133,109
CO	0.540	0.567	0.608	9,450	10,490	12,160
CT	0.650	0.700	0.700	1,235	910	1,050
GA	0.280	0.384	0.280	35,033	35,316	32,512
ID	0.494	0.427	0.356	6,368	5,546	4,491
IL	0.420	0.470	0.512	7,182	7,755	10,138
IN	0.583	0.733	0.716	1,691	2,199	2,363
KY	0.487	0.545	0.557	877	654	1,003
LA	0.871	0.751	0.815	1,132	1,051	1,223
MD	0.367	0.392	0.473	3,226	2,741	4,024
MA	0.700	0.800	0.800	1,470	1,760	2,160
MI	0.298	0.318	0.181	12,503	4,452	7,790
MO	0.365	0.420	0.620	3,285	3,360	6,200
NJ	0.405	0.442	0.460	28,350	25,194	28,520
NY	0.311	0.238	0.352	3,736	2,375	4,218
NC	0.400	0.350	0.400	1,400	3,500	2,400
OH	0.490	0.496	0.498	5,390	4,514	5,478
OK	0.459	0.577	0.618	4,728	3,347	2,966
OR	0.427	0.409	0.559	2,735	3,028	1,957
PA	0.335	0.335	0.330	24,810	19,792	23,397
SC	0.425	0.329	0.362	36,098	42,705	28,925
TN	0.484	0.470	0.514	1,694	1,739	1,645
TX	0.570	0.600	0.730	14,820	6,840	4,891
UT	0.218	0.312	0.394	1,936	2,031	3,431
VA	0.317	0.410	0.378	2,219	2,747	3,478
WA	0.338	0.337	0.260	18,588	22,217	13,536
WV	0.300	0.310	0.370	3,210	3,100	4,366
US	0.211	0.204	0.193	493,298	503,827	466,681

U. S. Peaches

Bearing Acres

1994 - 2003

(000) Acres

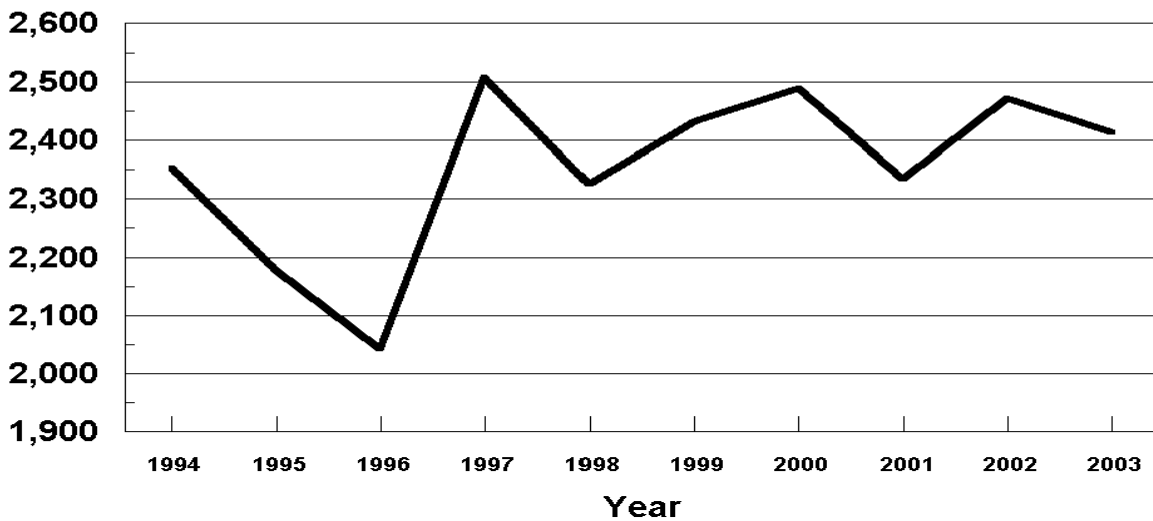


U. S. Peaches

Utilized Production

1994 - 2003

Million Pounds



**Peaches: Fresh and Processed Utilization, and Price
by Type, State, and United States, 2001-2003 ¹**

Use and State	Fresh and Processed Utilization					
	Quantity			Price per Unit		
	2001	2002	2003	2001	2002	2003
	<i>Million Pounds</i>	<i>Million Pounds</i>	<i>Million Pounds</i>	<i>Dollars per Pound</i>	<i>Dollars per Pound</i>	<i>Dollars per Pound</i>
Fresh						
AL	22.0	23.0	8.6	0.418	0.440	0.470
CA						
Freestone	538.0	555.7	536.6	0.214	0.209	0.203
CT	1.9	1.3	1.5	0.650	0.700	0.700
IL	17.1	16.5	19.8	0.420	0.470	0.512
IN	2.9	3.0	3.3	0.583	0.733	0.716
KY	1.8	1.2	1.8	0.487	0.545	0.557
LA	1.3	1.4	1.5	0.871	0.751	0.815
MD	8.6	6.9	8.4	0.373	0.396	0.478
MA	2.1	2.2	2.7	0.700	0.800	0.800
MI	27.0	10.6	25.0	0.375	0.370	0.200
MO	9.0	8.0	10.0	0.365	0.420	0.620
NY ²			8.5			0.420
OH	11.0	9.1	11.0	0.490	0.496	0.498
OK	10.3	5.8	4.8	0.459	0.577	0.618
SC	80.0	115.0	70.0	0.443	0.357	0.395
TN	3.5	3.7	3.2	0.484	0.470	0.514
TX	26.0	11.4	6.7	0.570	0.600	0.730
VA	7.0	6.7	9.2	0.317	0.410	0.378
WV	10.7	10.0	11.8	0.300	0.310	0.370
Oth Sts	373.8	318.7	344.4	0.360	0.411	0.370
US	1,154.0	1,110.2	1,088.8	0.309	0.311	0.301
	<i>Million Pounds</i>	<i>Million Pounds</i>	<i>Million Pounds</i>	<i>Dollars per Ton</i>	<i>Dollars per Ton</i>	<i>Dollars per Ton</i>
Processed						
CA						
Clingstone	902.0	1,074.0	1,011.0	244.00	247.00	215.00
Freestone ³	237.0	240.3	261.4	182.00	185.00	185.00
MI	15.0	3.4	18.0	317.00	312.00	310.00
NY ²			3.5			370.00
SC	5.0	15.0	10.0	263.00	220.00	255.00
Oth Sts	21.9	28.6	21.1	179.00	140.00	146.00
US ⁴	1,180.9	1,361.3	1,325.0	231.00	234.00	210.00

¹ Missing data included in Other States to avoid disclosure of individual operations.

² Data published beginning in 2003.

³ CA Freestone quantity and value include dried, price excludes dried.

⁴ US quantity, price, and value include dried.

**Peaches: Fresh and Processed Value by State
and United States, 2001-2003 ¹**

Use and State	Fresh and Processed Utilization		
	Value of Utilized Production		
	2001	2002	2003
	<i>1,000 Dollars</i>	<i>1,000 Dollars</i>	<i>1,000 Dollars</i>
Fresh			
AL	9,196	10,120	4,042
CA			
Freestone	115,132	116,141	108,930
CT	1,235	910	1,050
IL	7,182	7,755	10,138
IN	1,691	2,199	2,363
KY	877	654	1,003
LA	1,132	1,051	1,223
MD	3,208	2,732	4,015
MA	1,470	1,760	2,160
MI	10,125	3,922	5,000
MO	3,285	3,360	6,200
NY ²			3,570
OH	5,390	4,514	5,478
OK	4,728	3,347	2,966
SC	35,440	41,055	27,650
TN	1,694	1,739	1,645
TX	14,820	6,840	4,891
VA	2,219	2,747	3,478
WV	3,210	3,100	4,366
Oth Sts	134,658	130,834	127,401
US	356,692	344,780	327,569
Processed			
CA			
Clingstone	110,044	132,639	108,683
Freestone ³	21,567	22,228	24,179
MI	2,378	530	2,790
NY ²			648
SC	658	1,650	1,275
Oth Sts	1,959	2,000	1,537
US ⁴	136,606	159,047	139,112

¹ Missing data included in Other States to avoid disclosure of individual operations.

² Data published beginning in 2003.

³ CA Freestone quantity and value include dried, price excludes dried.

⁴ US quantity, price, and value include dried.

**Peaches: Processed Utilization, and Price by Use,
State, and United States, 2001-2003**¹

Use and State	Processed Utilization					
	Quantity			Price per Ton		
	2001	2002	2003	2001	2002	2003
	<i>Million Pounds</i>	<i>Million Pounds</i>	<i>Million Pounds</i>	<i>Dollars</i>	<i>Dollars</i>	<i>Dollars</i>
Canned						
CA						
Clingstone	870.2	1,023.0	957.0	244.00	244.00	217.00
NY ²						
Freestone			3.5			370.00
Oth Sts	36.5	38.4	36.7	232.00	229.00	235.00
US	906.7	1,061.4	997.2	244.00	243.00	218.00
Frozen						
CA						
Freestone	172.0	182.2	191.9	214.00	205.00	211.00
Oth Sts	28.7	22.1	31.0	270.00	288.00	312.00
US	200.7	204.3	222.9	222.00	214.00	225.00
Dried						
CA						
Freestone	29.2	28.4	20.3	51.00	49.00	47.00
US	29.2	28.4	20.3	51.00	49.00	47.00
Other ³						
Oth Sts	44.3	67.2	84.6	150.00	221.00	107.00
US	44.3	67.2	84.6	150.00	221.00	107.00

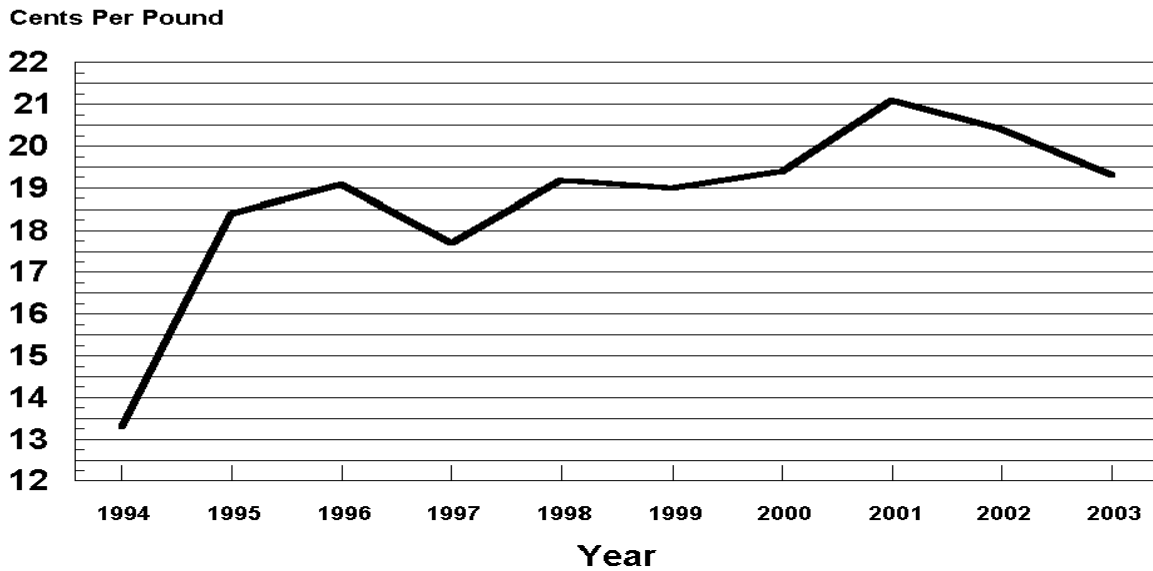
¹ Missing data included in Other States to avoid disclosure of individual operations.

² Data published beginning in 2003.

³ Pickled, wine, brandy, juice, and baby food.

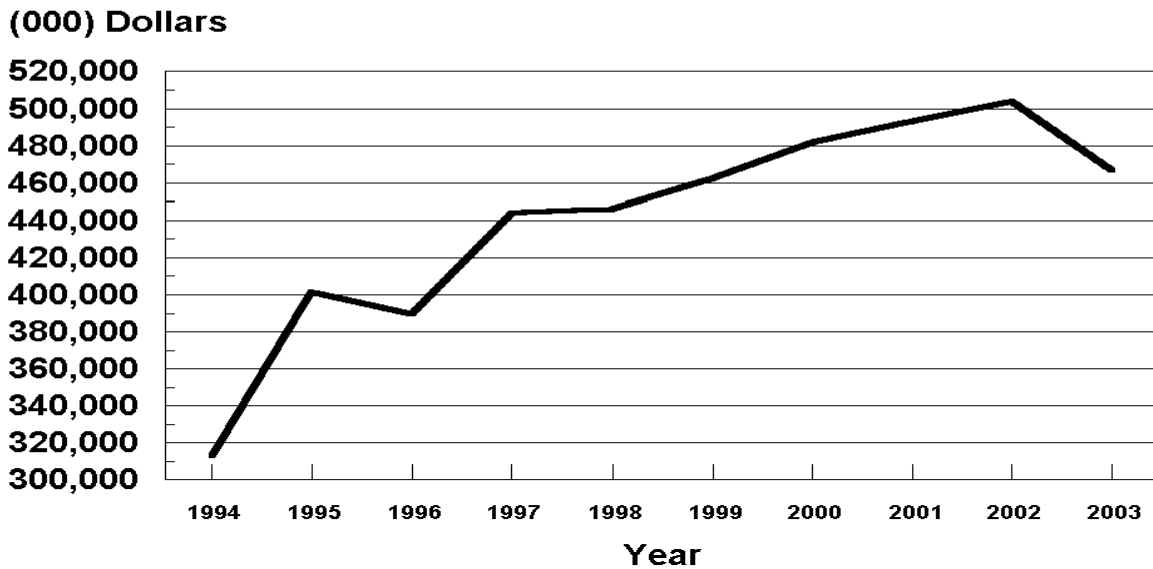
U.S. Peaches

Prices Received 1994 - 2003



U.S. Peaches

Value of Utilized Production 1994 - 2003



**All Pears: Bearing Acreage, Yield, Production, and Utilization
by State and United States, 2001-2003 ¹**

State and Year	Bearing Acreage	Yield Per Acre ²	Production		Utilization	
			Total	Utilized	Fresh	Processed
	<i>Acres</i>	<i>Tons</i>	<i>Tons</i>	<i>Tons</i>	<i>Tons</i>	<i>Tons</i>
CA						
2001	18,300	16.70	305,000	270,000		
2002	17,300	15.10	262,000	262,000		
2003	16,800	13.80	231,000	231,000		
CO						
2001			1,900	1,900		
2002			2,400	2,400		
2003			2,800	2,800		
CT						
2001			480	480		
2002			500	500		
2003			1,300	1,270		
MI						
2001	800	5.75	4,600	3,900		
2002	800	1.75	1,400	1,400		
2003	850	5.65	4,800	4,300		
NY						
2001	1,400	7.86	11,000	10,000		
2002	1,400	7.14	10,000	9,850		
2003	1,400	11.10	15,500	14,800		
OR						
2001	17,000	13.50	230,000	229,500		
2002	17,600	11.30	199,000	198,000		
2003	17,600	12.30	216,000	216,000		
PA						
2001	1,000	5.50	5,500	5,200		
2002	1,000	3.80	3,800	3,500		
2003	1,000	5.20	5,200	4,900		
UT						
2001	180	1.67	300	300		
2002	180	1.94	350	350		
2003	180	2.50	450	380		
WA						
2001	24,800	17.90	443,000	443,000		
2002	24,800	15.70	389,000	389,000		
2003	24,800	18.00	446,000	446,000		
US ³						
2001	64,030	15.60	1,001,780	964,280	543,170	421,110
2002	63,615	13.70	868,450	867,000	502,870	364,130
2003	63,150	14.60	923,050	921,450	564,350	357,100

¹ Missing data not published to avoid disclosure of individual operations.

² Yield is based on total production.

³ Processed mostly canned, but includes small quantities dried and other uses not published separately to avoid disclosure of individual operations.

**All Pears: Price and Value by State
and United States, 2001-2003 ¹**

State and Year	Price per Ton			Value of Production		
	Fresh	Processed Exc. Dried	All	Fresh	Processed Inc. Dried	All
	<i>Dollars</i>	<i>Dollars</i>	<i>Dollars</i>	<i>1,000 Dollars</i>	<i>1,000 Dollars</i>	<i>1,000 Dollars</i>
CA						
2001			268.00			72,272
2002			261.00			68,270
2003			232.00			53,564
CO						
2001			500.00			950
2002			576.00			1,383
2003			600.00			1,679
CT						
2001			644.00			309
2002			858.00			429
2003			1,000.00			1,270
MI						
2001			297.00			1,160
2002			318.00			445
2003			259.00			1,112
NY						
2001			401.00			4,008
2002			374.00			3,682
2003			373.00			5,513
OR						
2001			278.00			63,700
2002			318.00			63,053
2003			334.00			72,212
PA						
2001			569.00			2,960
2002			480.00			1,681
2003			697.00			3,414
UT						
2001			583.00			175
2002			643.00			225
2003			784.00			298
WA						
2001			245.00			108,627
2002			299.00			116,437
2003			321.00			143,011
US ²						
2001	333.00	175.00	264.00	180,728	73,433	254,161
2002	359.00	206.00	295.00	180,544	75,061	255,605
2003	369.00	207.00	306.00	208,202	73,871	282,073

¹ Missing data not published to avoid disclosure of individual operations.

² Processed mostly canned, but includes small quantities dried and other uses not published separately to avoid disclosure of individual operations.

**Pears: Bearing Acreage, Yield, Production, and Utilization
by Type, State, and United States, 2001-2003 ¹**

Type, State and Year	Bearing Acreage	Yield Per Acre ²	Production		Utilization	
			Total	Utilized	Fresh	Processed
	<i>Acres</i>	<i>Tons</i>	<i>Tons</i>	<i>Tons</i>	<i>Tons</i>	<i>Tons</i>
Bartlett ³						
CA						
2001	14,000	19.60	275,000	240,000	67,000	173,000
2002	13,000	17.80	232,000	232,000	69,000	163,000
2003	12,500	16.10	201,000	201,000	61,000	140,000
OR						
2001	4,600	15.20	70,000	69,500	27,500	42,000
2002	4,600	12.60	58,000	58,000	23,000	35,000
2003	4,600	13.30	61,000	61,000	29,000	32,000
WA						
2001	11,300	17.80	201,000	201,000	49,000	152,000
2002	11,300	14.00	158,000	158,000	44,000	114,000
2003	11,300	17.30	196,000	196,000	61,000	135,000
Total						
2001	29,900	18.30	546,000	510,500	143,500	367,000
2002	28,900	15.50	448,000	448,000	136,000	312,000
2003	28,400	16.10	458,000	458,000	151,000	307,000
Other ⁴						
CA						
2001	4,300	6.98	30,000	30,000		
2002	4,300	6.98	30,000	30,000		
2003	4,300	6.98	30,000	30,000		
OR						
2001	12,400	12.90	160,000	160,000		
2002	13,000	10.80	141,000	140,000		
2003	13,000	11.90	155,000	155,000		
WA						
2001	13,500	17.90	242,000	242,000		
2002	13,500	17.10	231,000	231,000		
2003	13,500	18.50	250,000	250,000		
Total						
2001	30,200	14.30	432,000	432,000	384,000	48,000
2002	30,800	13.10	402,000	401,000	354,000	47,000
2003	30,800	14.10	435,000	435,000	391,800	43,200

¹ Missing data not published to avoid disclosure of individual operations.

² Yield is based on total production.

³ Processed mostly canned, but includes small quantities dried and other uses not published separately to avoid disclosure of individual operations.

⁴ Processed mostly juice, but includes small quantities canned and other uses not published separately to avoid disclosure of individual operations.

**Pears: Price and Value by Type, State,
and United States, 2001-2003 ¹**

Type, State and Year	Price per Ton			Value of Production		
	Fresh	Processed Exc. Dried	All	Fresh	Processed Inc. Dried	All
	<i>Dollars</i>	<i>Dollars</i>	<i>Dollars</i>	<i>1,000 Dollars</i>	<i>1,000 Dollars</i>	<i>1,000 Dollars</i>
Bartlett ²						
CA						
2001	317.00	232.00	255.00	21,239	39,963	61,202
2002	270.00	231.00	242.00	18,630	37,490	56,120
2003	190.00	236.00	221.00	11,590	32,900	44,490
OR						
2001	472.00	190.00	302.00	12,980	7,980	20,960
2002	520.00	229.00	344.00	11,960	8,015	19,975
2003	469.00	224.00	340.00	13,601	7,168	20,769
WA						
2001	475.00	149.00	228.00	23,275	22,648	45,923
2002	520.00	233.00	313.00	22,880	26,562	49,442
2003	462.00	228.00	301.00	28,182	30,780	58,962
Total						
2001	401.00	192.00	251.00	57,494	70,591	128,085
2002	393.00	232.00	280.00	53,470	72,067	125,537
2003	353.00	231.00	271.00	53,373	70,848	124,221
Other ³						
CA						
2001			369.00			11,070
2002			405.00			12,150
2003			302.00			9,074
OR						
2001			267.00			42,740
2002			308.00			43,078
2003			332.00			51,443
WA						
2001			259.00			62,704
2002			290.00			66,995
2003			336.00			84,049
Total						
2001	300.00	25.90	270.00	115,270	1,244	116,514
2002	341.00	31.70	305.00	120,729	1,494	122,223
2003	365.00	34.90	332.00	143,058	1,508	144,566

¹ Missing data not published to avoid disclosure of individual operations.

² Processed mostly canned, but includes small quantities dried and other uses not published separately to avoid disclosure of individual operations.

³ Processed mostly juice, but includes small quantities canned and other uses not published separately to avoid disclosure of individual operations.

**Hawaii Crops: Acreage Harvested, Yield, Utilized
Production, and Utilization, 2001-2003**

Crop and Year	Acreage Harvested	Yield Per Acre	Utilized Production	Utilization	
				Fresh	Processed
	<i>Acres</i>	<i>1,000 Pounds</i>	<i>1,000 Pounds</i>	<i>1,000 Pounds</i>	<i>1,000 Pounds</i>
Bananas					
2001	1,490	18.8	28,000	28,000	
2002	1,300	15.0	19,500	19,500	
2003	1,400	15.7	22,000	22,000	
Guavas					
2001	610	25.1	15,300		15,300
2002	550	17.6	9,700		9,700
2003 ¹					
Papayas					
2001	1,950	28.2	55,000	52,000	3,000
2002	1,720	26.7	45,900	42,700	3,200
2003	1,600	26.9	43,000	41,500	1,500
	<i>Acres</i>	<i>1,000 Pounds</i>	<i>Tons</i>	<i>Tons</i>	<i>Tons</i>
Pineapples ²					
2001	20,100		323,000	110,000	213,000
2002	19,100		320,000	117,000	203,000
2003	16,000		315,000	132,000	183,000

¹ Acreage, yield, and production estimates for 2003 will be published on May 12, 2004. Fresh and processed utilization estimates for 2003 will be published on July 7, 2004.

² Acreage is total acres in crop, not harvested acreage. Yield is not estimated. Production and processed utilization on a fresh weight basis.

Hawaii Crops: Price and Value, 2001-2003

Crop and Year	Price			Value of Production		
	Fresh	Processed	All	Fresh	Processed	Total
	<i>Dollars per Pound</i>	<i>Dollars per Pound</i>	<i>Dollars per Pound</i>	<i>1,000 Dollars</i>	<i>1,000 Dollars</i>	<i>1,000 Dollars</i>
Bananas						
2001	0.380		0.380	10,640		10,640
2002	0.430		0.430	8,385		8,385
2003	0.420		0.420	9,240		9,240
Guavas						
2001		0.141	0.141		2,157	2,157
2002		0.150	0.150		1,455	1,455
2003 ¹						
Papayas						
2001	0.279	0.030	0.265	14,508	90	14,598
2002	0.277	0.030	0.260	11,828	96	11,924
2003	0.324	0.030	0.314	13,446	45	13,491
	<i>Dollars per Ton</i>	<i>Dollars per Ton</i>	<i>Dollars per Ton</i>			
Pineapples ²						
2001	626.00	129.00	298.00	68,860	27,477	96,337
2002	624.00	136.00	314.00	73,008	27,608	100,616
2003	592.00	135.00	327.00	78,144	24,705	102,849

¹ Estimates for 2003 will be published on July 7, 2004.

² Processed price is for fresh fruit delivered to processing plant door. Fresh price is for fruit at wholesale establishments for local sales and at shippers dock for mainland and foreign sales.

**Apples: Unutilized Production by State
and United States, 2001-2003**

Crop and State	Unharvested Production			Harvested Not Sold		
	2001	2002	2003	2001	2002	2003
	<i>Million Pounds</i>	<i>Million Pounds</i>	<i>Million Pounds</i>	<i>Million Pounds</i>	<i>Million Pounds</i>	<i>Million Pounds</i>
Apples						
AZ	0.1				0.2	
AR	1.0	0.9	0.1	0.2	0.2	
CA	30.0				10.0	
CO		1.0				1.0
CT	0.5	0.5	1.0			
GA	0.1	0.1	0.1			
ID				1.0	1.0	
IL	2.0	4.8	4.9	1.0	2.9	1.7
IN	7.0	4.0	5.0			
IA	0.9	3.3	1.3	0.2		
KS	1.0	0.7	0.7			0.1
KY	1.1	1.5	0.2	0.2	0.1	0.1
ME	6.0	4.5	4.0	1.0		
MD	0.1	0.1	0.1			1.5
MA	5.0	5.0	4.0			
MI	20.0	5.0		10.0		
MN	7.0	6.0	6.2	1.5	1.3	1.0
MO		1.0			1.0	
NH	1.0	0.5	1.0	0.5	1.5	
NJ	4.9	3.0		0.1		
NM					0.2	0.2
NY	60.0	50.0	40.0			
NC	3.0	5.0	12.0	2.0		
OH	2.0		2.0			
OR	1.0	15.0				
PA		1.0				
RI	0.4	0.4	0.4		0.1	
SC	3.9	1.3	1.4	0.1	0.7	0.1
TN	2.5	1.0	0.4		0.1	0.1
UT	6.0	0.5	2.0			
VT	3.0	3.0	2.5			
VA	4.0	3.0	12.0			
WV	10.0	3.0				
WI	9.0	5.5	8.0	4.0	0.5	2.0
US	192.5	130.6	109.3	21.8	19.8	7.8

**Miscellaneous Crops: Unutilized Production
by State and United States, 2001-2003**

Crop and State	Unharvested Production			Harvested Not Sold		
	2001	2002	2003	2001	2002	2003
	<i>Million Pounds</i>	<i>Million Pounds</i>	<i>Million Pounds</i>	<i>Million Pounds</i>	<i>Million Pounds</i>	<i>Million Pounds</i>
Peaches						
AL	0.9	0.8	1.0	0.1	1.7	0.4
AR	1.2	2.2	1.2	0.5		0.2
CA						
Clingstone				50.0	50.0	61.0
CO				0.5	0.5	1.0
GA		2.0	2.0	15.0	6.0	2.0
ID				0.1		0.4
IL	0.5	0.7	0.3	0.2		0.4
IN	0.1	0.1	0.1			
LA		0.1	0.1	0.1		
MA	0.1	0.1	0.3			
MI			2.0			2.0
NJ	2.0	5.0	5.0	3.0		3.0
NY	0.5		1.0			
OH	0.2	0.3	0.3			
OK	1.4	1.1	0.1	0.3	0.1	0.1
OR	0.1	0.5	1.0			
PA	1.0	1.0	2.0			
SC	3.0	18.0	7.0	12.0	12.0	13.0
TN	0.1	0.2	0.2	0.1	0.1	0.1
TX	3.0	0.1	0.1	1.0	0.5	0.2
UT			0.1	0.1		0.2
VA	1.0	0.3	0.3			0.5
WV	0.2			0.1		0.7
US	15.3	32.5	24.1	83.1	70.9	85.2
Cherries (Tart)						
MI				55.0		
NY				0.6		
OR	0.1	0.1				
UT	0.5	0.1			0.1	
WA				6.0		
US	0.6	0.2		61.6	0.1	
	<i>Barrels¹</i>	<i>Barrels¹</i>	<i>Barrels¹</i>	<i>Barrels¹</i>	<i>Barrels¹</i>	<i>Barrels¹</i>
Cranberries						
MA				2,000.0		
NJ				154,000.0		
OR	1,000.0			9,000.0		
WA	4,000.0	7,000.0		2,000.0		
WI				374,000.0		
US	5,000.0	7,000.0		541,000.0		

¹ A barrel weighs 100 pounds.

**Miscellaneous Crops: Unutilized Production
by State and United States, 2001-2003**

Crop and State	Unharvested Production			Harvested Not Sold		
	2001	2002	2003	2001	2002	2003
	<i>Tons</i>	<i>Tons</i>	<i>Tons</i>	<i>Tons</i>	<i>Tons</i>	<i>Tons</i>
Apricots						
CA	7,000	10,000				
UT	10	10	20	20		
US	7,010	10,010	20	20		
Cherries (Sweet)						
CA				4,200	1,800	1,900
ID				10		
MI		100				
MT	270	80	120	180	60	70
NY	50		20			10
OR	6,000	2,000				
UT	50	20				200
US	6,370	2,200	140	4,390	1,860	2,180
Grapes						
AR	200	200	100			
CA			75,000			
GA		40	300			
MI	400	200	14,000			
NY		1,000	42,000			4,000
OH			1,100			
PA			16,000			1,000
TX	100	300	200	100		
VA				400	400	500
US	700	1,740	148,700	500	400	5,500
Kiwifruit						
CA				2,800	3,000	2,800
Pears						
CA	35,000					
CO						
CT			30			
MI	400		500	300		
NY	1,000	150	700			
OR	500	1,000				
PA	100	200	300	200	100	
UT						70
US	37,000	1,350	1,530	500	100	70
Prunes & Plums						
ID		50				20
MI		10				
OR	1,200	800	1,400			
US	1,200	860	1,400			20
Prunes						
CA ¹	4,000			11,000	9,000	15,000

¹ California Prunes are on a dried basis.

**Berries: Unutilized Production by State
and United States, 2001-2003**

Crop and State	Unharvested Production			Harvested Not Sold		
	2001	2002	2003	2001	2002	2003
	<i>1,000 Pounds</i>	<i>1,000 Pounds</i>	<i>1,000 Pounds</i>	<i>1,000 Pounds</i>	<i>1,000 Pounds</i>	<i>1,000 Pounds</i>
Red Raspberries WA	700		500	300		
Cultivated Blueberries						
AL	270	220	140			10
AR	220	80	100	30	10	
FL	300	200	300			
GA	1,000					
IN	100	100	100			
NJ	1,000	1,000	1,000			
NY	100	200	100	100		
NC	230	1,500		70		
OR	400		200			
WA	500			50		
US	4,120	3,300	1,940	250	10	10
Boysenberries OR	70	30				
Black Raspberries OR	140	100	100			
Loganberries OR	10	10				
Cultivated Blackberries (OR)						
Marion	700	600	400			
Evergreen	1,200	500	100			
Other	70		100			
All	1,970	1,100	600			

**Nut Crops: Bearing Acreage and Yield by Crop,
State, and United States, 2001-2003**

Crop and State	Bearing Acreage			Yield per Acre ¹		
	2001	2002	2003	2001	2002	2003
	<i>Acres</i>	<i>Acres</i>	<i>Acres</i>	<i>Tons (In-Shell Basis)</i>	<i>Tons (In-Shell Basis)</i>	<i>Tons (In-Shell Basis)</i>
Hazelnuts OR	28,100	30,000	30,000	1.76	0.65	1.17
Walnuts (English) CA	196,000	200,000	205,000	1.56	1.41	1.59
				<i>Pounds (In-Shell Basis)</i>	<i>Pounds (In-Shell Basis)</i>	<i>Pounds (In-Shell Basis)</i>
Macadamia Nuts HI	17,800	17,800	17,800	3,150	2,980	2,870
Pistachios CA	78,000	83,000	88,000	2,060	3,650	1,320
				<i>Pounds (Shelled Basis)</i>	<i>Pounds (Shelled Basis)</i>	<i>Pounds (Shelled Basis)</i>
Almonds CA	525,000	530,000	530,000	1,580	2,060	1,920

¹ Yield is based on utilized production.

**Nut Crops: Production and Price by Crop,
State, and United States, 2001-2003**

Crop and State	Production			Price per Unit		
	2001	2002	2003	2001	2002	2003
	<i>Tons (In-Shell Basis)</i>	<i>Tons (In-Shell Basis)</i>	<i>Tons (In-Shell Basis)</i>	<i>Dollars per Ton</i>	<i>Dollars per Ton</i>	<i>Dollars per Ton</i>
Hazelnuts OR	49,500	19,500	35,000	701.00	1,000.00	1,050.00
Walnuts ¹ (English) CA	305,000	282,000	325,000	1,120.00	1,080.00	
	1,000 Pounds					
	<i>(In-Shell Basis)</i>	<i>(In-Shell Basis)</i>	<i>(In-Shell Basis)</i>	<i>Dollars per Pound</i>	<i>Dollars per Pound</i>	<i>Dollars per Pound</i>
Macadamia Nuts HI	56,000	53,000	51,000	0.590	0.570	0.590
Pistachios CA	161,000	303,000	116,000	1.010	1.100	1.150
	1,000 Pounds					
	<i>(Shelled Basis)</i>	<i>(Shelled Basis)</i>	<i>(Shelled Basis)</i>			
Almonds ² CA	830,000	1,090,000	1,020,000	0.910	1.110	1.420

¹ Price estimates for 2003 will be published on July 7, 2004.

² Price and value are based on the edible portion of the crop only. Production includes inedible quantities of no value as follows: 2001 - 16.8 million pounds, 2002 - 8.3 million pounds, and 2003 - 20.0 million pounds.

Nut Crops: Use by Crop, State, and United States, 2001-2003

Crop and State	Production					
	Sold In-Shell			Sold Shelled ¹		
	2001	2002	2003	2001	2002	2003
	<i>Tons</i>	<i>Tons</i>	<i>Tons</i>	<i>Tons</i>	<i>Tons</i>	<i>Tons</i>
Hazelnuts ² OR	32,500	13,000		17,000	6,500	
Walnuts ² (English) CA	80,000	67,000		225,000	215,000	
	<i>1,000 Pounds</i>	<i>1,000 Pounds</i>	<i>1,000 Pounds</i>	<i>1,000 Pounds</i>	<i>1,000 Pounds</i>	<i>1,000 Pounds</i>
Pecans ² US	24,600	12,000		313,900	160,900	
	<i>Marketable In-Shell</i>	<i>Marketable In-Shell</i>	<i>Marketable In-Shell</i>	<i>Shelling Stock ¹</i>	<i>Shelling Stock ¹</i>	<i>Shelling Stock ¹</i>
Pistachios CA	126,500	242,000	88,000	34,500	61,000	28,000

¹ In-shell basis.

² Estimates for 2003 will be published on July 7, 2004.

**Nut Crops: Value and Meat Production by Crop,
State, and United States, 2001-2003**

Crop and State	Value of Utilized Production		
	2001	2002	2003
	<i>1,000 Dollars</i>	<i>1,000 Dollars</i>	<i>1,000 Dollars</i>
Hazelnuts OR	34,700	19,500	36,750
Walnuts ¹ (English) CA	341,600	304,560	
Macadamia Nuts HI	33,040	30,210	30,090
Pistachios CA	162,610	333,300	133,400
Almonds ² CA	740,012	1,200,687	1,419,432
	Meat Production of Nuts Sold Shelled		
	2001	2002	2003
	<i>Tons</i>	<i>Tons</i>	<i>Tons</i>
Hazelnuts ¹ OR	6,800	2,600	
Walnuts ¹ (English) CA	95,000	93,000	
	<i>1,000 Pounds</i>	<i>1,000 Pounds</i>	<i>1,000 Pounds</i>
Pecans ¹ US	135,000	73,000	
Pistachios CA	17,300	30,100	13,500

¹ Estimates for 2003 will be published on July 7, 2004.

² Price and value are based on the edible portion of the crop only. Production includes inedible quantities of no value as follows:
2001 - 16.8 million pounds, 2002 - 8.3 million pounds and 2003 - 20.0 million pounds.

**Pecans: Utilized Production and Price by Variety,
State, and United States, 2001-2003**

Variety and State	Utilized Production			Price per Pound		
	2001	2002	2003	2001	2002	2003
	<i>1,000 Pounds</i>	<i>1,000 Pounds</i>	<i>1,000 Pounds</i>	<i>Dollars</i>	<i>Dollars</i>	<i>Dollars</i>
Improved Varieties ¹						
AL	10,000	4,000	7,000	0.580	0.670	0.840
AZ	21,000	16,000	23,500	0.460	1.030	1.280
AR	1,950	1,200	1,400	0.600	0.600	1.100
CA	3,700	3,800	3,600	0.810	1.270	1.190
FL	1,200	500	500	0.510	0.870	1.000
GA	85,000	42,000	50,000	0.660	1.020	1.020
LA	3,500	2,000	5,000	0.600	0.890	1.060
MS	3,000	2,100	3,500	0.650	0.950	0.880
NM	60,000	36,000	55,000	0.640	1.250	1.200
NC	2,700	1,500	2,200	0.650	0.950	0.850
OK	2,000	1,500	2,000	0.530	0.600	0.700
SC	2,500	120	900	0.640	0.970	0.750
TX	50,000	20,000	49,000	0.800	1.020	1.120
US	246,550	130,720	203,600	0.662	1.070	1.110
Native and Seedling						
AL	5,000	1,000	1,000	0.360	0.490	0.660
AR	650	500	900	0.400	0.500	0.720
FL	2,100	900	1,600	0.420	0.500	0.600
GA	25,000	3,000	10,000	0.450	0.680	0.600
KS	2,200	2,900	2,200	0.400	0.750	0.870
LA	10,500	4,000	10,000	0.350	0.500	0.600
MS	1,500	900	1,500	0.450	0.550	0.460
NC	500	400	300	0.450	0.600	0.500
OK	18,000	8,500	10,000	0.420	0.500	0.600
SC	1,500	80	100	0.460	0.570	0.500
TX	25,000	20,000	21,000	0.400	0.650	0.650
US	91,950	42,180	58,600	0.412	0.603	0.627
All Pecans						
AL	15,000	5,000	8,000	0.507	0.634	0.818
AZ	21,000	16,000	23,500	0.460	1.030	1.280
AR	2,600	1,700	2,300	0.550	0.571	0.951
CA	3,700	3,800	3,600	0.810	1.270	1.190
FL	3,300	1,400	2,100	0.453	0.632	0.695
GA	110,000	45,000	60,000	0.612	1.000	0.950
KS	2,200	2,900	2,200	0.400	0.750	0.870
LA	14,000	6,000	15,000	0.413	0.630	0.753
MS	4,500	3,000	5,000	0.583	0.830	0.754
NM	60,000	36,000	55,000	0.640	1.250	1.200
NC	3,200	1,900	2,500	0.619	0.876	0.808
OK	20,000	10,000	12,000	0.431	0.515	0.617
SC	4,000	200	1,000	0.573	0.810	0.725
TX	75,000	40,000	70,000	0.667	0.835	0.979
US	338,500	172,900	262,200	0.594	0.955	1.000

¹ Budded, grafted, or topworked varieties.

**Pecans: Value of Production by Variety,
State, and United States, 2001-2003**

Variety and State	Value of Production		
	2001	2002	2003
	<i>1,000 Dollars</i>	<i>1,000 Dollars</i>	<i>1,000 Dollars</i>
Improved Varieties ¹			
AL	5,800	2,680	5,880
AZ	9,660	16,480	30,080
AR	1,170	720	1,540
CA	2,997	4,826	4,284
FL	612	435	500
GA	56,100	42,840	51,000
LA	2,100	1,780	5,300
MS	1,950	1,995	3,080
NM	38,400	45,000	66,000
NC	1,755	1,425	1,870
OK	1,060	900	1,400
SC	1,600	116	675
TX	40,000	20,400	54,880
US	163,204	139,597	226,489
Native and Seedling			
AL	1,800	490	660
AR	260	250	648
FL	882	450	960
GA	11,250	2,040	6,000
KS	880	2,175	1,914
LA	3,675	2,000	6,000
MS	675	495	690
NC	225	240	150
OK	7,560	4,250	6,000
SC	690	46	50
TX	10,000	13,000	13,650
US	37,897	25,436	36,722
All Pecans			
AL	7,600	3,170	6,540
AZ	9,660	16,480	30,080
AR	1,430	970	2,188
CA	2,997	4,826	4,284
FL	1,494	885	1,460
GA	67,350	44,880	57,000
KS	880	2,175	1,914
LA	5,775	3,780	11,300
MS	2,625	2,490	3,770
NM	38,400	45,000	66,000
NC	1,980	1,665	2,020
OK	8,620	5,150	7,400
SC	2,290	162	725
TX	50,000	33,400	68,530
US	201,101	165,033	263,211

¹ Budded, grafted, or topworked varieties.

Definition of Terms

Apples, Commercial Crop refers to orchards of 100 or more bearing age trees.

Bearing Acreage - An orchard, grove, or vineyard is considered bearing when it reaches an age when it can normally be expected to produce a commercially significant quantity of the crop. Bearing age is a function of many factors including variety, rootstock, year planted, etc. Bearing acreage is primarily based upon periodic orchard surveys. In non-survey years, bearing acreage is based on trends, county extension service data, end-of-year production surveys, and other indications.

Prices are a marketing year average for all methods of sale. For a crop sold for both fresh market and processing, the **Marketing Year Average Price (MYA)** is a weighted average of the fresh and processing price.

Prices for fresh fruit are the average prices producers receive at the point of first sale. This is commonly referred to as the **average price as sold**. Since the point of first sale is not the same for all producers, prices for the various methods of sale are weighted by the proportionate quantity sold. For example, if in a given State part of the fruit is sold F.O.B. packed by growers, part is sold as bulk fruit at the packinghouse door, and some is sold retail at roadside stands, the fresh fruit **average price as sold** is a weighted average of the average price for each method of sale. The exception is fresh fruit sales in California, Washington, and New York (apples only) which are equivalent returns at packinghouse door. The equivalent packinghouse returns represent adjusted prices.

F.O.B. packed prices are adjusted to an equivalent incoming packinghouse door price by subtracting all costs that accumulate between the incoming packinghouse door and the F.O.B. price. These costs include grading, packing, inspecting fees, selling, and other costs.

Prices for fruit sold for processing are equivalent returns for fruit delivered to the processing plant door except for cranberries, California olives, and clingstone peaches which are priced at the first delivery point.

Crop value estimates in this report cover the marketing season or crop year and should not be confused with cash receipts from these crops which are on a calendar year.

Total Production is the quantity actually harvested plus quantities which would have been acceptable for fresh market or processing but were not harvested because of economic or natural reasons.

Unutilized Production is the difference between total and utilized production which is marketable fruit not harvested for economic or natural reasons and harvested fruit not sold or utilized.

Harvested not sold is fruit of marketable quality that was picked but not sold for various reasons. Harvested not sold amounts up to 2 percent of total production are considered normal seasonal losses and are excluded from total production.

Unharvested Production is marketable fruit produced, but not harvested for various reasons. Unharvested amounts up to 2 percent of total production are considered normal seasonal losses and are excluded from total production.

Utilization refers to first utilization, not necessarily final utilization. For example, frozen fruit includes some fruit that may be later used for making preserves. Grade-outs for fresh market fruit which are processed are included in the processing quantity. Fruit graded-out from canning or freezing and utilized for juice is included with juice.

Utilized Production is the amount sold plus the quantities used at home or held in storage.

Yield per Acre is based on total production which includes unharvested production and fruit harvested but not sold due to marketing conditions.

State Value of Utilized Production and MYA Price Computations

The following procedure is used to compute State Values of Utilized Production and MYA Prices:

Fresh Market Value = Fresh Market MYA
 Times
 Fresh Market Utilization

Process Market Value = Process Market MYA
 Times
 Process Market Utilization

"All" Sales Value = Fresh Market Value
 Plus
 Process Market Value

"All" Sales MYA = "All" Sales Value
 Divided By
 "All" Sales Utilization

For commodities with components not identified by market channel, substitute breakdown name for fresh/processing market and use the same procedure.

U.S. MYA Price Computations

The following procedure is used to compute the U.S. MYA Prices:

Fresh Market MYA = Fresh Market Value For All States
 Divided By
 Fresh Market Utilization For All States

Process Market MYA = Process Market Value For All States
 Divided By
 Process Market Utilization For All States

"All" Sales MYA = Sales Value For All States
 Divided By
 Sales Utilization For All States

Marketing Seasons for Noncitrus Fruits ¹

Apples:

All South Atlantic States, plus AR, CA, IL, IN, KY, MO, NM, TN June - May
 OR, WA August - July
 All other States July - June

Apricots:

Fresh Fruit May 25 - August 20
 Canning June 15 - August 15
 Dried (CA) June 20 - August 20

Avocados:

CA November 1 through November 30 the following year
 FL June 20 - February 28
 HI January 1 - December 31 (peak harvest March 1 - April 30)

Bananas: January 1 - December 31

Cherries, Sweet: May 1 - August 15

Cherries, Tart: June 15 - August 20

Cranberries: September 5 - December 20

Dates: August 15 - March 15

Figs:

Fresh Fruit June 5 - October 31
 Canning August 1 - October 15
 Dried (CA) June 20 - October 31

Grapes:

Fresh (CA) May 25 - April 30
 Fresh (AZ) June 5 - July 15
 Fresh (All other States) July 10 - October 31
 Crushed for Juice, Wine, or Brandy August 1 - December 15
 Dried for Raisins (CA) September 1 - May 31

Guavas: January 1 - December 31 (peak harvest September 1 - October 31)

Kiwifruit: November 1 - April 30

Nectarines: June 10 - August 31

¹See footnote on next page.

Marketing Seasons for Noncitrus Fruits ¹ (continued)

Olives:	September 25 - March 15
Papayas:	January 1 - December 31
Peaches:	
Fresh (GA and SC)	May 20 - August 31
Fresh (Other South Atlantic States, South Central States, CA)	June 1 - September 30
Fresh(New England States, ID, MI, NY)	August 1 - September 30
Fresh (All other States)	July 1 - September 30
Canning (CA)	July 1 - September 10
Dried (CA)	August 1 - October 10
Pears:	
Fresh (CA)	July 1 - April 30
Fresh (WA and OR)	August 10 - May 31
Fresh (Other States)	July 1 - December 15
Canning and Dried (CA, OR, WA)	August 1 - November 30
Pineapples:	January 1 - December 31 (peak harvest March 1 - July 31)
Plums:	
Fresh (CA)	May 25 - September 30
Canning (CA)	June 1 - September 30
Prunes, Dried (CA):	August 1 - April 30
Prune and Plums:	
Fresh and Canning (ID, MI, OR, WA)	August 10 - October 20

Marketing Seasons for Tree Nuts ¹

Almonds:	August 5 - November 15
Hazelnuts (Filberts):	October 1 - September 30
Macadamia Nuts:	January 1 - December 31 (peak harvest August 1 - December 31)
Pecans:	September 30 - March 15
Pistachios:	September 1 - October 31
Walnuts:	September 15 - December 31

¹For detail by States, see Agricultural Handbook No. 186, "Fruits and Tree Nuts, Blooming, Harvesting, and Marketing Dates", Dec 1975.

Information Contacts

Listed below are the commodity specialists in the Crops Branch of the National Agricultural Statistics Service to contact for additional information.

Mark Harris, Chief	(202) 720-2127
Field Crops Section	
Greg Thessen, Head	(202) 720-2127
Dave DeWalt - Cotton, Cotton Ginnings	(202) 720-5944
Herman Ellison - Soybeans, Minor Oilseeds	(202) 720-7369
Lance Honig - Wheat, Rye	(202) 720-8068
Darin Jantzi - Corn, Proso Millet, Flaxseed	(202) 720-9526
Troy Joshua - Hay, Oats, Sorghum	(202) 690-3234
Mark R. Miller - Peanuts, Rice	(202) 720-7688
Brian Young - Crop Weather, Barley, Sugar Crops	(202) 720-7621
Fruit, Vegetable & Special Crops Section	
Jim Smith, Head	(202) 720-2127
Cathy Scherrer - Dry Beans, Potatoes, Sweet Potatoes	(202) 720-4285
Kathy Broussard - Citrus, Tropical Fruits	(202) 720-5412
Debbie Flippin - Austrian Winter Peas, Dry Edible Peas, Lentils, Mint, Mushrooms, Peaches, Pears, Wrinkled Seed Peas	(202) 720-3250
Mike Miller - Berries, Grapes, Maple Syrup, Tobacco	(202) 720-7235
Terry O'Connor - Apples, Apricots, Cherries, Cranberries, Plums, Prunes	(202) 720-4288
Kim Ritchie - Hops	(360) 902-1940
Betty Johnston - Floriculture, Nursery, Nuts	(202) 720-4215
Biz Wallingsford - Fresh and Processing Vegetables, Onions, Strawberries	(202) 720-2157

The next "*Noncitrus Fruits and Nuts 2003 Summary*" report will be released after 3 p.m. ET on July 7, 2004.

The United States Department of Agriculture (USDA) prohibits discrimination in all its programs on the basis of race, color, national origin, gender, religion, age, disability, political beliefs, sexual orientation, and marital or family status. (Not all prohibited bases apply to all programs.) Persons with disabilities who require alternative means for communication of program information (braille, large print, audiotape, etc.) should contact the USDA's TARGET Center at 202-720-2600 (voice and TDD).

To file a complaint of discrimination, write USDA, Director, Office of Civil Rights, Room 326-W, Whitten Building, 1400 Independence Avenue, SW, Washington, D.C., 20250-9410, or call 202-720-5964 (voice or TDD). USDA is an equal opportunity provider and employer.

ACCESS TO REPORTS!!

For your convenience, there are several ways to obtain NASS reports, data products, and services:

INTERNET ACCESS

All NASS reports are available free of charge on the worldwide Internet. For access, connect to the Internet and go to the NASS Home Page at: www.usda.gov/nass/. Select "Today's Reports" or Publications and then Reports Calendar or Publications and then Search, by Title or Subject.

E-MAIL SUBSCRIPTION

All NASS reports are available by subscription free of charge direct to your e-mail address. Starting with the NASS Home Page at www.usda.gov/nass/, click on **Publications**, then click on the **Subscribe by E-mail** button which takes you to the page describing e-mail delivery of reports. Finally, click on **Go to the Subscription Page** and follow the instructions.

PRINTED REPORTS OR DATA PRODUCTS

CALL OUR TOLL-FREE ORDER DESK: 800-999-6779 (U.S. and Canada)
Other areas, please call 703-605-6220 FAX: 703-605-6900
(Visa, MasterCard, check, or money order acceptable for payment.)

ASSISTANCE

For **assistance** with general agricultural statistics or further information about NASS or its products or services, contact the **Agricultural Statistics Hotline** at **800-727-9540**, 7:30 a.m. to 4:00 p.m. ET, or e-mail: nass@nass.usda.gov.

Ensuring a Healthy Food Supply



February 19-20, 2004
Crystal Gateway
Marriott Hotel
Arlington, Virginia

Shoppers demand affordable food that's safe, healthy and right for their family's diet. Foreign consumers, too, have high standards for American-grown foods. Meeting their expectations poses challenges for farmers and ranchers, the food industry and government.

At Agricultural Outlook Forum 2004, you will hear about the latest developments in food safety, health concerns and innovative products. The program also features in-depth analysis of 2004 commodity planting, trade and market prospects. And you will receive new 10-year commodity projections from USDA.

Networking opportunities abound at this popular event. Register online today. For program updates, send your name and e-mail address to agforum@oce.usda.gov.

www.usda.gov/oce agforum@oce.usda.gov (877) 891-2208 toll free