



United States
Department of
Agriculture

National
Agricultural
Statistics
Service



Noncitrus Fruits and Nuts 2004 Summary

July 2005

Fr Nt 1-3 (05)

USDA



Contents

	Page
Noncitrus Fruits and Tree Nuts	
Bearing Acreage, U.S.	7
Bearing Acreage and Yield per Acre by Crop	4
Narrative	3
Price and Value by Crop	6
Production Utilization, U.S.	7
Total and Utilized Production by Crop.	5
Noncitrus Fruits	
Apples, Commercial Crop	10, 64, 68
Apricots	20, 26, 27, 66
Avocados	20
Bananas	62
Berries (excluding strawberries)	30, 67
California Dry Fruits	27
Cherries, Sweet	36, 40, 66
Cherries, Tart	38, 40, 65
Cranberries	42, 65
Dates	20
Figs	22, 26, 27
Grapes	27, 44, 66, 69
Guavas	62
Hawaii Crops	62
Kiwifruit	22, 66
Nectarines	22
Olives	22, 26
Papayas	62
Peaches	27, 50, 65, 69
Pears	27, 58, 66, 69
Pineapples	62
Plums	22
Prunes (dried basis)	24, 27
Prunes and Plums	24, 26, 66
Strawberries	28
Unutilized Production	64
Tree Nuts	
Almonds	70
Hazelnuts	70
Macadamia Nuts	70
Pecans	72, 74
Pistachios	70
Walnuts	70
Definition of Terms	76
Information Contacts	80
Marketing Seasons	78
State Value of Utilized Production Computation	77
U.S. MYA Price Computation	77

This page intentionally left blank.

2004 Noncitrus Fruit Utilized Production Down Less Than 1 Percent, Value Up 3 Percent

In 2004, the Nation's utilized production of the leading noncitrus fruit crops totaled 16.8 million tons, down less than 1 percent from 2003 utilized production. Utilized production increased from 2003 for apples, Oregon blackberries, cultivated blueberries, boysenberries, California raspberries, sweet cherries, California figs, Hawaii guavas, California kiwifruit, peaches, prunes and plums, and strawberries.

The value of utilized production for noncitrus fruit crops totaled 8.94 billion dollars, up 3 percent from 2003. The value of utilized production for sweet cherries increased 28 percent from 2003, while grape value is up 15 percent, pears are up 10 percent, strawberries increased 7 percent, and cranberries are up 2 percent from the previous year. However, the value of utilized production for California prunes decreased 44 percent, California nectarines decreased 28 percent, Hawaii pineapples are down 21 percent, California plums are down 15 percent, tart cherries decreased 13 percent, and apples are down 10 percent from 2003.

Highlights

Utilized apple production for 2004 is estimated at 10.3 billion pounds, up 19 percent from the 2003 level. Utilized production for Washington and New York increased 33 percent and 21 percent, respectively, while Michigan's utilized production decreased 15 percent compared to the previous year. In Washington, excellent growing conditions allowed production to rebound from the short 2003 crop. Yield potential in Michigan was reduced by a hard freeze during the first week of May. Widespread hail storms in the early fall further curtailed Michigan production. A spring heat wave in California reduced fruit size and resulted in lower production. Hurricane winds increased fruit drop but ample rainfall increased fruit size in Pennsylvania.

Utilized grape production for 2004 totaled 6.22 million tons, down 4 percent from the 2003 crop. The California crop, which accounts for 90 percent of the 2004 U.S. utilized grape production, is down 3 percent from the previous year. Also for California, raisin type production dropped 8 percent from 2003, wine type production decreased 3 percent, but table type production is up 14 percent. Utilized production increased from 2003 in Arkansas, Georgia, Missouri, North Carolina, Pennsylvania, and Texas.

Utilized peach production in 2004 is estimated at 1.23 million tons, up 2 percent from the previous year and 1 percent above 2002. The California crop, accounting for 76 percent of the U.S. utilized peach production, is up 1 percent from 2003. For California, the Clingstone peach estimate is up 7 percent but the Freestone estimate is down 6 percent from 2003.

Utilized pear production for 2004 is 885,400 tons, down 5 percent from the previous year. Washington, the top producing State, utilized 379,000 tons, down 10 percent from 2003. California, the second largest producer at 271,000 tons, is virtually unchanged from the previous season. Utilized pear production in Oregon, the third largest producing State, is 210,000 tons, up 2 percent from 2003.

U.S. Nut Production Up 5 Percent, Value Up 42 Percent

The 2004 U.S. nut production (in-shell basis) is estimated at 1.52 million tons, a 5 percent increase from a year earlier. Almond production totaled 867,700 tons, virtually unchanged from 2003. The pistachio crop totaled a record high 173,500 tons, more than double the 59,500 tons produced last year. Hazelnut production, at 36,800 tons, is down 3 percent from 2003. Walnut production for 2004 is estimated at 325,000 tons, virtually unchanged from the previous year. Pecan production for 2004 is estimated at 92,900 tons, a 34 percent decrease from 2003. Macadamia production, at 28,300 tons, is up 7 percent from 2003.

The 2004 U.S. value of utilized nut production is estimated at 3.50 billion dollars, up 42 percent from the revised 2003 value. The 2004 almond value, estimated at 2.20 billion dollars, is up 37 percent from 2003. Pistachio value for 2004, at 444 million dollars, is more than two times larger than the 2003 value. Hazelnut value, at 53.0 million dollars, is 36 percent higher than the 2003 value. Walnuts are valued at 439 million dollars in 2004, a 16 percent increase from the revised 2003 value. The pecan crop showed an 18 percent increase in value, to 327 million dollars. The macadamia value, at 40.1 million dollars, is up 24 percent from the previous year.

**Noncitrus Fruits and Nuts: Bearing Acreage and Yield per Acre
by Crop, United States, 2002-2004**

Crop	Bearing Acreage			Yield per Acre		
	2002	2003	2004	2002	2003	2004
	<i>Acres</i>	<i>Acres</i>	<i>Acres</i>	<i>Tons</i>	<i>Tons</i>	<i>Tons</i>
Noncitrus Fruits						
Apples	394,800	390,450	386,090	10.80	11.30	13.50
Apricots	17,340	17,840	17,340	5.19	5.47	5.83
Avocados	65,650	66,900	68,670	3.04	3.49	2.96
Bananas (HI) ¹	1,330	1,350	1,000	7.50	8.35	8.25
Blackberries (OR) ^{1 2}	6,500	6,400	6,300	3.60	3.26	3.72
Blueberries						
Cultivated ¹	41,850	41,670	44,430	2.26	2.26	2.56
Wild (ME) ³						
Boysenberries ¹	1,110	1,000	950	2.25	2.15	2.74
Loganberries (OR) ¹	70	70	60	1.86	1.36	1.42
Raspberries ¹						
Black (OR)	1,200	1,100	1,000	1.21	1.05	1.10
Red	11,700	11,200	10,900	3.49	3.23	3.08
All (CA)	2,400	3,000	3,200	6.10	10.30	10.40
Cherries, Sweet	72,730	74,990	78,275	2.49	3.28	3.62
Cherries, Tart	37,700	36,970	36,950	0.83	3.06	2.88
Cranberries	39,400	39,600	39,200	7.22	7.82	7.87
Dates (CA)	4,800	4,700	5,200	5.04	3.81	3.15
Figs (CA)	13,500	13,000	12,500	3.94	3.73	4.06
Grapes	949,950	951,010	933,000	7.73	6.99	6.68
Guavas (HI) ¹	550	530	500	8.80	6.30	8.10
Kiwifruit (CA)	4,500	4,500	4,500	5.80	5.64	5.93
Nectarines (CA)	36,500	36,500	36,500	8.22	7.48	7.37
Olives (CA)	36,000	36,000	32,000	2.86	3.28	3.25
Papayas (HI) ¹	1,720	1,565	1,235	13.40	13.60	14.50
Peaches	146,350	145,530	146,170	8.66	8.65	8.94
Pears	64,115	64,150	64,500	13.90	14.60	13.80
Pineapples (HI) ⁴	19,100	16,000	13,000			
Plums (CA)	36,000	36,000	36,000	5.58	5.81	4.33
Prunes (CA)	74,000	72,000	70,000	7.02	8.02	2.06
Prunes & Plums ⁵	4,010	4,010	3,960	3.90	4.06	6.31
Strawberries ¹	47,600	48,400	51,600	19.80	22.30	21.50
Total	2,132,475	2,126,435	2,105,030			
Tree Nuts						
Almonds (CA) ⁶	545,000	550,000	550,000	1.62	1.58	1.58
Hazelnuts	29,200	28,000	28,600	0.67	1.35	1.29
Macadamias (HI)	17,800	17,800	17,800	1.49	1.49	1.59
Pecans ³						
Pistachios (CA)	83,000	88,000	93,000	1.83	0.68	1.87
Walnuts (CA)	210,000	213,000	217,000	1.34	1.53	1.50
Total	885,000	896,800	906,400			

¹ Harvested acreage. Yield based on utilized production.

² Cultivated.

³ Bearing acreage and yield not calculated.

⁴ Acreage is total acres in crop, not harvested acreage. Yield is not estimated.

⁵ ID, MI, OR, and WA.

⁶ Yield based on in-shell basis. Shelling ratios are: 2002 - 0.618; 2003 - 0.600; 2004 - 0.582.

**Noncitrus Fruits and Nuts: Total and Utilized Production
by Crop, United States, 2002-2004**

Crop	Total Production			Utilized Production		
	2002	2003	2004	2002	2003	2004
	<i>1,000 Tons Fresh Equivalent</i>	<i>1,000 Tons Fresh Equivalent</i>	<i>1,000 Tons Fresh Equivalent</i>	<i>1,000 Tons Fresh Equivalent</i>	<i>1,000 Tons Fresh Equivalent</i>	<i>1,000 Tons Fresh Equivalent</i>
Noncitrus Fruits						
Apples	4,262.0	4,396.6	5,210.0	4,187.1	4,351.5	5,165.3
Apricots	90.0	97.6	101.1	80.0	97.6	92.6
Avocados	199.4	233.4	203.4	199.4	233.4	203.4
Bananas (HI) ¹				10.0	11.3	8.3
Blackberries (OR) ²	23.6	21.2	23.5	23.4	20.9	23.5
Blueberries						
Cultivated	96.0	94.8	114.4	94.3	94.0	113.8
Wild (ME)	31.2	40.2	23.0	31.2	40.2	23.0
Boysenberries	2.5	2.2	2.6	2.5	2.2	2.6
Loganberries (OR)	0.1	0.1	0.1	0.1	0.1	0.1
Raspberries						
Black (OR)	1.5	1.2	1.1	1.5	1.2	1.1
Red	40.9	36.5	33.5	40.9	36.2	33.5
All (CA)	14.6	30.8	33.3	14.6	30.8	33.3
Cherries, Sweet	181.4	245.7	283.1	177.3	243.6	279.2
Cherries, Tart	31.3	113.2	106.5	31.1	113.2	106.5
Cranberries	284.5	309.7	308.5	284.1	309.7	308.1
Dates (CA)	24.2	17.9	16.4	24.2	17.9	16.4
Figs (CA)	53.2	48.5	50.8	53.2	48.5	50.8
Grapes	7,338.9	6,643.5	6,231.7	7,336.8	6,489.6	6,221.6
Guavas (HI) ¹				4.9	3.4	4.1
Kiwifruit (CA)	26.1	25.4	26.7	23.1	24.0	24.7
Nectarines (CA)	300.0	273.0	269.0	300.0	273.0	252.0
Olives (CA)	103.0	118.0	104.0	103.0	118.0	104.0
Papayas (HI) ¹				23.0	21.3	17.9
Peaches	1,267.5	1,259.5	1,307.1	1,217.7	1,205.2	1,229.8
Pears	890.0	934.1	890.3	888.6	928.5	885.4
Pineapples (HI) ¹				320.0	300.0	215.0
Plums (CA)	201.0	209.0	156.0	201.0	209.0	144.0
Prunes (CA)	519.2	577.5	143.9	492.0	536.0	141.0
Prunes & Plums ³	15.7	16.3	25.0	14.8	14.9	18.9
Strawberries ¹				942.3	1,078.0	1,106.9
Total				17,122.1	16,853.2	16,826.8
	<i>1,000 Tons In-Shell Equivalent</i>	<i>1,000 Tons In-Shell Equivalent</i>	<i>1,000 Tons In-Shell Equivalent</i>	<i>1,000 Tons In-Shell Equivalent</i>	<i>1,000 Tons In-Shell Equivalent</i>	<i>1,000 Tons In-Shell Equivalent</i>
Tree Nuts ¹						
Almonds (CA)				881.9	866.7	867.7
Hazelnuts				19.5	37.9	36.8
Macadamias (HI)				26.5	26.5	28.3
Pecans				86.5	141.1	92.9
Pistachios (CA)				151.5	59.5	173.5
Walnuts (CA)				282.0	326.0	325.0
Total				1,447.9	1,457.7	1,524.2

¹ Only utilized production estimated.

² Cultivated.

³ ID, MI, OR, and WA.

**Noncitrus Fruits and Nuts: Price and Value
by Crop, United States, 2002-2004**

Crop	Unit ¹	Price			Value of Utilized Production		
		2002	2003	2004	2002	2003	2004
		<i>Dollars</i>	<i>Dollars</i>	<i>Dollars</i>	<i>1,000 Dollars</i>	<i>1,000 Dollars</i>	<i>1,000 Dollars</i>
Noncitrus Fruits							
Apples	Lb	0.189	0.209	0.158	1,581,260	1,817,240	1,629,071
Apricots	Ton	357.00	356.00	378.00	28,565	34,702	35,012
Avocados	Ton	1,920.00	1,690.00	1,450.00	382,188	394,367	294,914
Bananas (HI)	Lb	0.430	0.410	0.490	8,600	9,225	8,085
Blackberries(OR) ²	Lb	0.442	0.695	0.712	20,687	28,986	33,407
Blueberries							
Cultivated	Lb	1.030	1.170	1.210	194,566	220,649	275,963
Wild (ME)	Lb	0.286	0.334	0.456	17,860	26,880	20,970
Boysenberries	Lb	0.664	0.866	1.150	3,320	3,725	5,968
Loganberries (OR)	Lb	0.808	0.990	0.771	210	189	131
Raspberries							
Black (OR)	Lb	0.411	1.360	2.250	1,191	3,132	4,952
Red	Lb	0.521	0.563	0.782	42,540	40,774	52,398
All (CA)	Lb	1.400	2.080	2.090	40,851	127,920	138,985
Cherries							
Sweet	Ton	1,550.00	1,410.00	1,570.00	274,471	342,113	437,133
Tart	Lb	0.448	0.354	0.327	27,879	80,210	69,633
Cranberries	Bbl	32.20	33.90	34.70	182,783	209,834	214,096
Dates (CA)	Ton	1,550.00	2,300.00	2,500.00	37,510	41,170	41,000
Figs (CA)	Ton	340.00	317.00	383.00	18,087	15,373	19,463
Grapes	Ton	387.00	403.00	484.00	2,841,569	2,616,846	3,013,410
Guavas (HI)	Lb	0.150	0.138	0.144	1,455	925	1,166
Kiwifruit (CA)	Ton	783.00	853.00	809.00	18,097	20,472	19,977
Nectarines (CA)	Ton	382.00	436.00	342.00	114,600	119,028	86,278
Olives (CA)	Ton	573.00	409.00	571.00	58,983	48,289	59,379
Papayas (HI)	Lb	0.260	0.307	0.345	11,924	13,069	12,361
Peaches	Ton	400.00	377.00	375.00	488,011	454,286	461,629
Pears	Ton	297.00	294.00	340.00	264,334	273,142	301,188
Pineapples (HI)	Ton	314.00	338.00	372.00	100,616	101,470	79,934
Plums (CA)	Ton	386.00	418.00	516.00	77,586	87,362	74,347
Prunes (CA)	Ton	810.00	772.00	1,500.00	132,030	129,696	72,000
Prunes & Plums ³	Ton	286.00	353.00	360.00	4,237	5,260	6,802
Strawberries	Cwt	61.60	63.80	66.50	1,161,630	1,375,142	1,471,251
Total					8,137,640	8,641,476	8,940,903
Almonds (CA) (Shelled)	Lb	1.110	1.570	2.210	1,200,687	1,600,144	2,200,055
Hazelnuts	Ton	1,000.00	1,030.00	1,440.00	19,500	39,037	52,992
Macadamias (HI)	Lb	0.570	0.610	0.710	30,210	32,330	40,115
Pecans	Lb	0.955	0.984	1.760	165,033	277,629	326,924
Pistachios (CA)	Lb	1.100	1.220	1.280	333,300	145,180	444,160
Walnuts (CA)	Ton	1,170.00	1,160.00	1,350.00	329,940	378,160	438,750
Total					2,078,670	2,472,480	3,502,996

¹ Ton refers to the 2,000 lb. short ton.

² Cultivated.

³ ID, MI, OR, and WA.

**Fruits and Nuts: Bearing Acreage,
United States, 2002-2004**

Year	Citrus Fruits ¹	Major Deciduous Fruits ²	Miscellaneous Noncitrus ³	Nuts ⁴	Total
	<i>Acres</i>	<i>Acres</i>	<i>Acres</i>	<i>Acres</i>	<i>Acres</i>
2002	1,053,900	1,833,495	298,980	885,000	4,071,375
2003	1,031,900	1,829,450	296,985	896,800	4,055,135
2004	983,600	1,808,785	296,245	906,400	3,995,030

¹ Grapefruit, K-Early Citrus, lemons, limes, oranges, tangelos, tangerines, and Temples.

² Commercial apples, apricots, cherries, grapes, nectarines, peaches, pears, plums, and prunes.

³ Avocados, bananas, berries, cranberries, dates, figs, guavas, kiwifruit, olives, papayas, pineapples, and strawberries.

⁴ Almonds, hazelnuts, macadamia nuts, pistachios, and walnuts.

**Noncitrus Fruits: Production Utilization,
United States, 2002-2004 ¹**

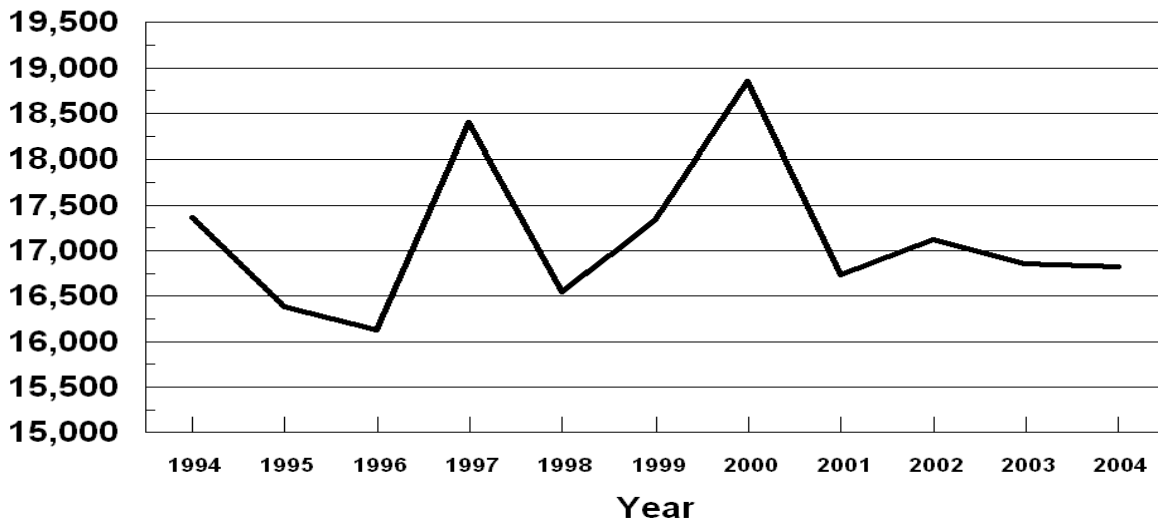
Year	Utilized Production	Fresh	Processed ²					
			Canned	Dried	Juice	Frozen	Wine	Other
	<i>1,000 Tons</i>	<i>1,000 Tons</i>	<i>1,000 Tons</i>	<i>1,000 Tons</i>	<i>1,000 Tons</i>	<i>1,000 Tons</i>	<i>1,000 Tons</i>	<i>1,000 Tons</i>
2002	17,122.1	6,549.4	1,727.4	2,581.8	1,251.2	590.8	3,999.3	138.1
2003	16,853.2	6,676.2	1,762.3	2,293.2	1,295.4	715.8	3,581.7	218.9
2004	16,826.8	7,156.2	1,701.0	1,418.5	1,450.9	685.3	3,818.2	288.6

¹ Cranberry quantity included in utilized production, excluded from fresh and processed breakdown.

² Processed strawberries are included in frozen.

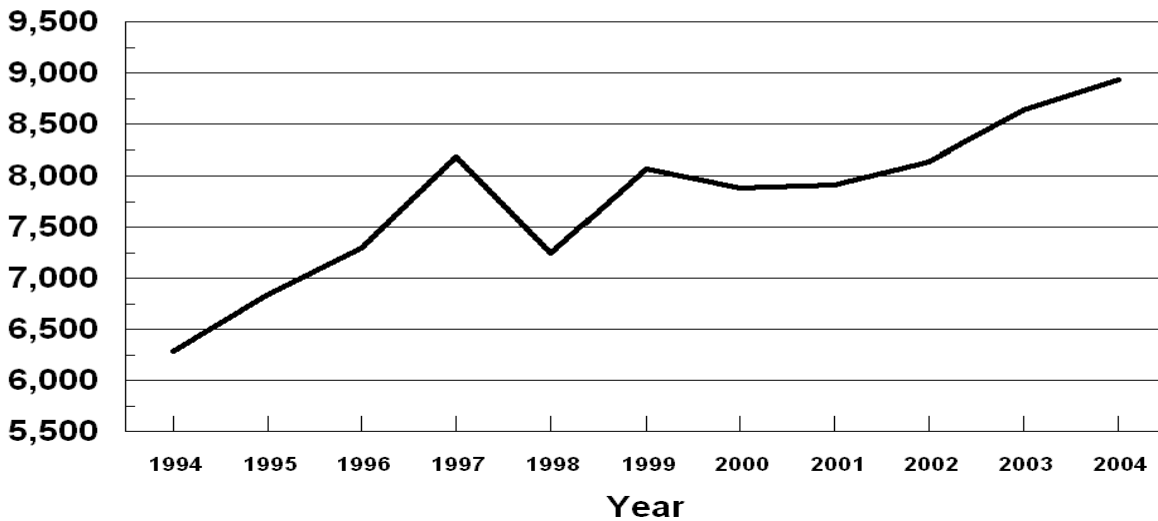
U.S. Noncitrus Fruits Utilized Production 1994 - 2004

1,000 Tons Fresh Equivalent



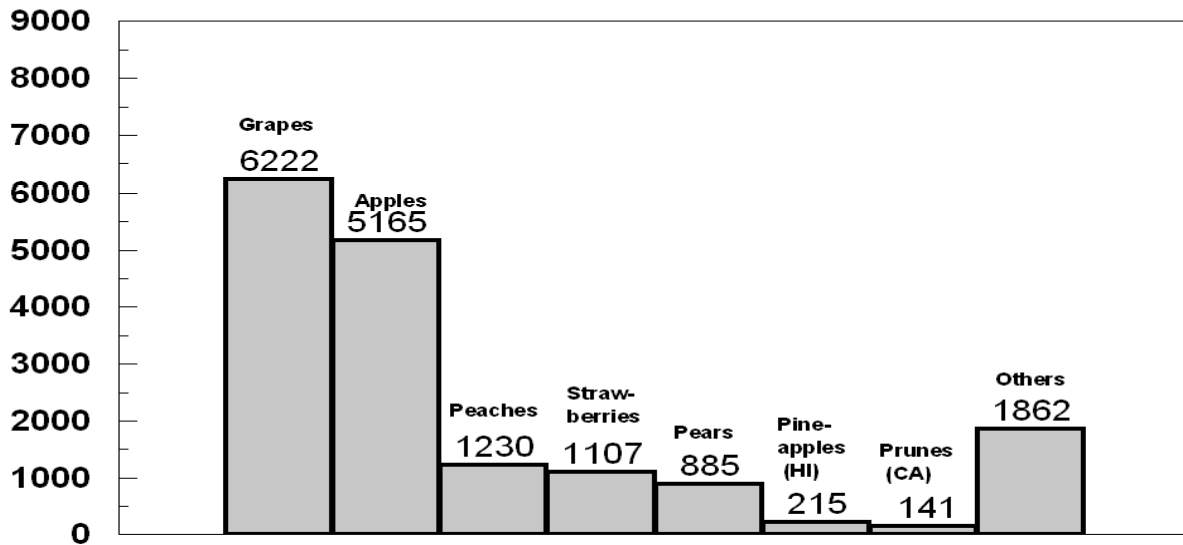
U.S. Noncitrus Fruits Value of Utilized Production 1994 - 2004

Million Dollars



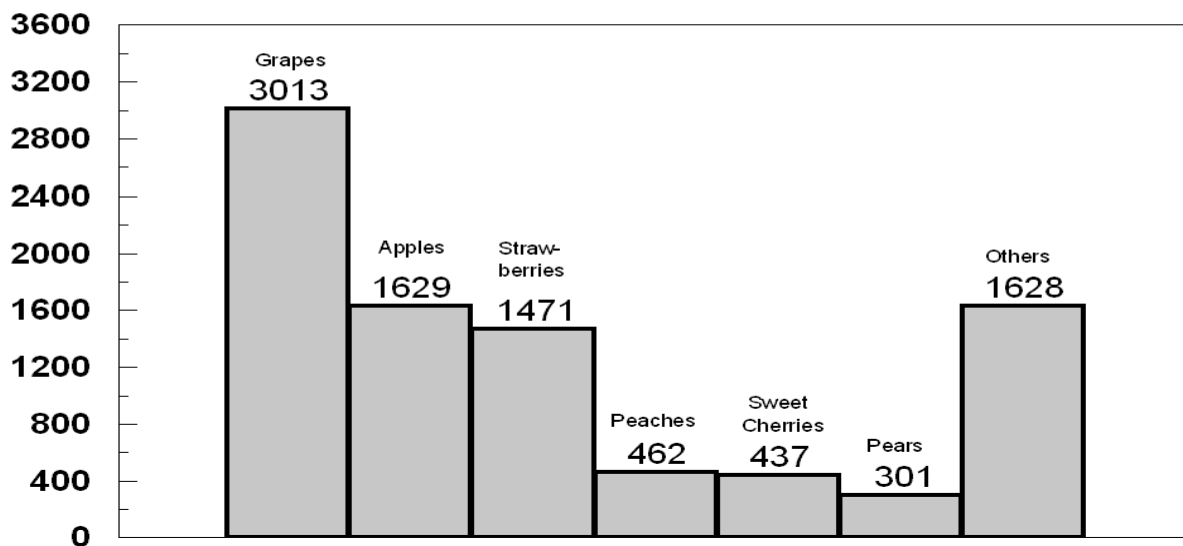
U.S. Noncitrus Fruits Utilized Production by Major Fruit, 2004

(000) Tons Fresh Equivalent



U.S. Noncitrus Fruits Value of Utilized Production by Major Fruit, 2004

Million Dollars



**Apples, Commercial: Bearing Acreage and Yield
by State and United States, 2002-2004**

State	Bearing Acreage			Yield per Acre ¹		
	2002	2003	2004	2002	2003	2004
	<i>Acres</i>	<i>Acres</i>	<i>Acres</i>	<i>Pounds</i>	<i>Pounds</i>	<i>Pounds</i>
AZ	1,500	1,200	1,200	17,500	5,830	30,800
AR	650	600	550	5,080	4,000	3,450
CA	28,000	28,000	26,000	16,800	16,100	15,000
CO	1,800	1,700	1,600	11,700	12,900	17,500
CT	2,200	2,200	2,200	5,450	9,770	8,860
GA	1,200	1,200	1,200	8,330	10,800	10,000
ID	3,400	3,400	3,400	23,500	20,600	26,500
IL	4,000	4,000	4,000	10,800	13,100	14,100
IN	4,000	4,000	4,000	10,000	12,800	15,000
IA	1,600	1,600	1,600	5,310	3,750	3,310
KS	350	300	290	7,140	11,300	9,660
KY	950	950	950	5,890	7,890	8,420
ME	3,500	3,500	3,500	13,900	12,600	13,400
MD	2,400	2,400	2,400	13,300	16,700	14,200
MA	4,100	4,100	4,100	8,050	10,400	10,200
MI	43,500	41,500	41,000	12,000	21,400	18,500
MN	2,650	2,600	2,500	9,430	10,400	10,000
MO	3,900	3,900	3,900	9,740	10,300	12,300
NH	2,100	2,100	2,100	12,600	12,400	14,500
NJ	2,600	2,400	2,300	13,500	16,700	17,400
NM	1,800	1,500	1,500	1,110	1,330	3,070
NY	45,000	45,000	45,000	15,100	23,800	28,400
NC	7,000	7,000	7,000	22,900	19,300	22,100
OH	7,500	7,600	7,300	9,330	11,800	12,300
OR	7,000	6,500	6,500	28,900	20,500	25,100
PA	22,000	22,000	22,100	16,800	20,100	18,300
RI	300	300	300	8,670	7,670	7,330
SC	1,500	1,200	1,000	6,000	5,000	6,000
TN	1,100	1,000	900	6,550	12,000	12,200
UT	2,000	2,000	2,000	3,500	14,000	16,000
VT	2,700	2,700	2,700	11,500	15,600	16,900
VA	15,000	15,000	15,000	16,700	18,000	20,000
WA	155,000	155,000	155,000	32,900	29,400	39,000
WV	6,500	6,000	5,000	14,600	14,500	16,200
WI	6,000	6,000	6,000	9,670	11,300	9,500
US	394,800	390,450	386,090	21,600	22,500	27,000

¹ Yield is based on total production, which includes unharvested production and fruit harvested but not sold due to market conditions.

**Apples, Commercial: Total and Utilized Production
by State and United States, 2002-2004**

State	Total Production			Utilized Production		
	2002	2003	2004	2002	2003	2004
	<i>Million Pounds</i>	<i>Million Pounds</i>	<i>Million Pounds</i>	<i>Million Pounds</i>	<i>Million Pounds</i>	<i>Million Pounds</i>
AZ	26.2	7.0	37.0	26.0	7.0	37.0
AR	3.3	2.4	1.9	2.5	2.3	1.1
CA	470.0	450.0	390.0	460.0	440.0	380.0
CO	21.0	22.0	28.0	20.0	21.0	27.0
CT	12.0	21.5	19.5	11.5	20.0	18.5
GA	10.0	13.0	12.0	9.9	12.9	12.0
ID	80.0	70.0	90.0	79.0	70.0	90.0
IL	43.0	52.5	56.5	35.3	45.9	51.3
IN	40.0	51.0	60.0	36.0	48.0	58.0
IA	8.5	6.0	5.3	5.2	4.7	4.8
KS	2.5	3.4	2.8	2.1	2.6	2.2
KY	5.6	7.5	8.0	4.0	7.1	7.3
ME	48.5	44.0	47.0	44.0	40.0	43.0
MD	32.0	40.0	34.1	31.9	38.4	33.0
MA	33.0	42.5	42.0	28.0	37.0	37.0
MI	520.0	890.0	760.0	515.0	890.0	760.0
MN	25.0	27.0	25.0	17.7	19.8	19.9
MO	38.0	40.0	48.0	36.0	40.0	47.0
NH	26.5	26.0	30.5	24.5	24.5	28.0
NJ	35.0	40.0	40.0	32.0	40.0	38.0
NM	2.0	2.0	4.6	1.8	1.8	2.5
NY	680.0	1,070.0	1,280.0	630.0	1,060.0	1,280.0
NC	160.0	135.0	155.0	155.0	130.0	132.0
OH	70.0	90.0	90.0	70.0	88.0	90.0
OR	202.0	133.0	163.0	187.0	132.0	160.0
PA	370.0	442.0	405.0	369.0	442.0	400.0
RI	2.6	2.3	2.2	2.1	2.0	2.1
SC	9.0	6.0	6.0	7.0	4.5	3.0
TN	7.2	12.0	11.0	6.1	11.5	10.5
UT	7.0	28.0	32.0	6.5	27.5	31.4
VT	31.0	42.0	45.5	28.0	37.5	42.0
VA	250.0	270.0	300.0	247.0	262.0	297.0
WA	5,100.0	4,550.0	6,050.0	5,100.0	4,550.0	6,050.0
WV	95.0	87.0	81.0	92.0	85.0	80.0
WI	58.0	68.0	57.0	52.0	58.0	55.0
US	8,523.9	8,793.1	10,419.9	8,374.1	8,703.0	10,330.6

**Apples, Commercial: Price and Value by State
by State and United States, 2002-2004**

State	Price per Pound			Value of Utilized Production		
	2002	2003	2004	2002	2003	2004
	<i>Dollars</i>	<i>Dollars</i>	<i>Dollars</i>	<i>1,000 Dollars</i>	<i>1,000 Dollars</i>	<i>1,000 Dollars</i>
AZ	0.173	0.078	0.153	4,506	549	5,656
AR	0.273	0.235	0.355	682	540	390
CA	0.204	0.178	0.150	93,840	78,190	57,185
CO	0.184	0.185	0.154	3,686	3,878	4,171
CT	0.412	0.371	0.395	4,740	7,420	7,310
GA	0.180	0.106	0.228	1,779	1,368	2,740
ID	0.194	0.202	0.118	15,308	14,133	10,646
IL	0.359	0.291	0.237	12,678	13,348	12,182
IN	0.265	0.263	0.219	9,528	12,609	12,686
IA	0.343	0.424	0.466	1,783	1,991	2,235
KS	0.358	0.273	0.276	752	711	607
KY	0.318	0.327	0.364	1,272	2,322	2,658
ME	0.361	0.298	0.320	15,900	11,935	13,740
MD	0.143	0.156	0.136	4,549	6,008	4,486
MA	0.386	0.346	0.381	10,821	12,803	14,108
MI	0.124	0.117	0.119	64,110	103,925	90,480
MN	0.509	0.436	0.410	9,008	8,624	8,157
MO	0.178	0.208	0.164	6,396	8,311	7,713
NH	0.285	0.279	0.301	6,993	6,835	8,420
NJ	0.176	0.146	0.151	5,640	5,840	5,740
NM	0.326	0.307	0.418	587	553	1,045
NY	0.177	0.145	0.151	111,214	154,030	193,560
NC	0.143	0.132	0.132	22,205	17,103	17,420
OH	0.268	0.274	0.276	18,750	24,130	24,831
OR	0.152	0.175	0.163	28,433	23,066	26,057
PA	0.101	0.103	0.101	37,150	45,425	40,353
RI	0.404	0.393	0.480	849	785	1,008
SC	0.132	0.219	0.108	921	985	323
TN	0.265	0.252	0.263	1,619	2,903	2,765
UT	0.213	0.230	0.268	1,384	6,317	8,415
VT	0.337	0.266	0.227	9,435	9,958	9,550
VA	0.104	0.096	0.149	25,756	25,066	44,226
WA	0.201	0.259	0.159	1,023,000	1,178,020	962,458
WV	0.085	0.097	0.091	7,821	8,214	7,250
WI	0.349	0.334	0.336	18,165	19,345	18,500
US	0.189	0.209	0.158	1,581,260	1,817,240	1,629,071

**Apples, Commercial: Fresh Market Utilization and Price
by State and United States, 2002-2004**

State	Fresh Market					
	Quantity			Price per Pound ¹		
	2002	2003	2004	2002	2003	2004
<i>Million Pounds</i>	<i>Million Pounds</i>	<i>Million Pounds</i>	<i>Dollars</i>	<i>Dollars</i>	<i>Dollars</i>	
AZ	6.0	0.1	3.0	0.551	0.700	0.560
CA	230.0	220.0	180.0	0.303	0.266	0.226
CO	11.0	13.0	18.0	0.286	0.261	0.197
CT	10.0	16.0	15.5	0.465	0.450	0.460
ID	55.0	45.0	45.0	0.260	0.290	0.210
IN	26.0	35.0	39.0	0.343	0.340	0.293
KY	3.8	7.0	6.9	0.330	0.330	0.380
ME	39.0	33.0	35.0	0.400	0.350	0.380
MD	14.8	16.7	10.5	0.212	0.258	0.265
MA	22.5	29.5	31.5	0.465	0.420	0.440
MI	150.0	310.0	240.0	0.223	0.195	0.202
MO	20.0	20.0	33.0	0.267	0.355	0.211
NH	13.5	14.5	18.0	0.465	0.430	0.440
NJ	20.0	24.0	28.0	0.240	0.195	0.180
NM	1.8	1.8	2.5	0.326	0.307	0.418
NY	310.0	510.0	660.0	0.280	0.230	0.228
NC	53.0	40.0	47.0	0.265	0.256	0.229
OH	59.0	78.0	78.1	0.304	0.300	0.308
OR	115.0	90.0	110.0	0.215	0.234	0.222
PA	74.0	95.0	110.0	0.215	0.213	0.172
SC	3.3	3.0	1.2	0.200	0.269	0.199
UT	5.5	23.0	29.2	0.240	0.265	0.284
VT	23.5	32.0	37.0	0.390	0.300	0.250
VA	70.0	52.0	132.0	0.196	0.221	0.250
WA	3,900.0	3,600.0	4,500.0	0.248	0.314	0.205
WV	15.0	16.0	15.0	0.180	0.215	0.172
WI	46.0	48.0	47.0	0.390	0.390	0.380
Oth Sts	68.3	89.2	89.8	0.412	0.327	0.323
US	5,366.0	5,461.8	6,562.2	0.258	0.294	0.217

¹ Equivalent packinghouse door returns for CA, NY, and WA; price at first sale for all other States.

**Apples, Commercial: Value of Fresh Market Production
by State and United States, 2002-2004**

State	Fresh Market		
	Value of Production		
	2002	2003	2004
	<i>1,000 Dollars</i>	<i>1,000 Dollars</i>	<i>1,000 Dollars</i>
AZ	3,306	70	1,680
CA	69,690	58,520	40,680
CO	3,146	3,393	3,546
CT	4,650	7,200	7,130
ID	14,300	13,050	9,450
IN	8,918	11,900	11,427
KY	1,254	2,310	2,622
ME	15,600	11,550	13,300
MD	3,138	4,309	2,783
MA	10,463	12,390	13,860
MI	33,450	60,450	48,480
MO	5,340	7,100	6,963
NH	6,278	6,235	7,920
NJ	4,800	4,680	5,040
NM	587	553	1,045
NY	86,800	117,300	150,480
NC	14,045	10,240	10,763
OH	17,936	23,400	24,055
OR	24,725	21,060	24,420
PA	15,910	20,235	18,920
SC	660	807	239
UT	1,320	6,095	8,293
VT	9,165	9,600	9,250
VA	13,720	11,492	33,000
WA	967,200	1,130,400	922,500
WV	2,700	3,440	2,580
WI	17,940	18,720	17,860
Oth Sts	28,123	29,131	28,976
US	1,385,164	1,605,630	1,427,262

**Apples, Commercial: Processed Utilization and Price
by State and United States, 2002-2004**

State	Processed					
	Quantity			Price per Ton		
	2002	2003	2004	2002	2003	2004
<i>Million Pounds</i>	<i>Million Pounds</i>	<i>Million Pounds</i>	<i>Dollars</i>	<i>Dollars</i>	<i>Dollars</i>	
AZ	20.0	6.9	34.0	120.00	139.00	234.00
CA	230.0	220.0	200.0	210.00	179.00	165.00
CO	9.0	8.0	9.0	120.00	121.00	139.00
CT	1.5	4.0	3.0	120.00	110.00	120.00
ID	24.0	25.0	45.0	84.00	86.60	53.20
IN	10.0	13.0	19.0	122.00	109.00	133.00
KY	0.2	0.1	0.4	180.00	240.00	180.00
ME	5.0	7.0	8.0	120.00	110.00	110.00
MD	17.1	21.7	22.5	165.00	157.00	151.00
MA	5.5	7.5	5.5	130.00	110.00	90.20
MI	365.0	580.0	520.0	168.00	150.00	162.00
MO	16.0	20.0	14.0	132.00	121.00	107.00
NH	11.0	10.0	10.0	130.00	120.00	100.00
NJ	12.0	16.0	10.0	140.00	145.00	140.00
NY	320.0	550.0	620.0	153.00	134.00	139.00
NC	102.0	90.0	85.0	160.00	153.00	157.00
OH	11.0	10.0	11.9	148.00	146.00	130.00
OR	72.0	42.0	50.0	103.00	95.50	65.50
PA	295.0	347.0	290.0	144.00	145.00	148.00
SC	3.7	1.5	1.8	141.00	237.00	93.30
UT	1.0	4.5	2.2	128.00	98.70	111.00
VT	4.5	5.5	5.0	120.00	130.00	120.00
VA	177.0	210.0	165.0	136.00	129.00	136.00
WA	1,200.0	950.0	1,550.0	93.00	100.00	51.60
WV	77.0	69.0	65.0	133.00	138.00	144.00
WI	6.0	10.0	8.0	75.00	125.00	160.00
Oth Sts	12.6	12.5	14.1	163.00	182.00	157.00
US	3,008.1	3,241.2	3,768.4	130.00	131.00	107.00

**Apples, Commercial: Value of Processed Production
by State and United States, 2002-2004**

State	Processed		
	Value of Production		
	2002	2003	2004
	<i>1,000 Dollars</i>	<i>1,000 Dollars</i>	<i>1,000 Dollars</i>
AZ	1,200	479	3,976
CA	24,150	19,670	16,505
CO	540	485	625
CT	90	220	180
ID	1,008	1,083	1,196
IN	610	709	1,259
KY	18	12	36
ME	300	385	440
MD	1,411	1,699	1,703
MA	358	413	248
MI	30,660	43,475	42,000
MO	1,056	1,211	750
NH	715	600	500
NJ	840	1,160	700
NY	24,414	36,730	43,080
NC	8,160	6,863	6,657
OH	814	730	776
OR	3,708	2,006	1,637
PA	21,240	25,190	21,433
SC	261	178	84
UT	64	222	122
VT	270	358	300
VA	12,036	13,574	11,226
WA	55,800	47,620	39,958
WV	5,121	4,774	4,670
WI	225	625	640
Oth Sts	1,027	1,139	1,108
US	196,096	211,610	201,809

**Apples, Commercial: Processed Utilization, Use, and Price
by State and United States, 2002-2004 ¹**

Use and State	Processed Utilization					
	Quantity			Price per Ton		
	2002	2003	2004	2002	2003	2004
	<i>Million Pounds</i>	<i>Million Pounds</i>	<i>Million Pounds</i>	<i>Dollars</i>	<i>Dollars</i>	<i>Dollars</i>
Canned						
CA	22.0	16.0		208.00	142.00	
MI	135.0	190.0	190.0	200.00	175.00	180.00
NY	228.0	270.0	340.0	166.00	150.00	156.00
NC	61.0	54.0	59.0	176.00	161.00	175.00
PA	201.0	263.0	230.0	160.00	160.00	160.00
VA	142.0	156.0	125.0	143.00	140.00	151.00
WA	190.0	190.0	190.0	140.00	142.00	75.00
WV	60.0	48.0	47.0	140.00	154.00	157.00
Oth Sts	39.7	48.6	56.9	162.00	162.00	161.00
US	1,078.7	1,235.6	1,237.9	161.00	154.00	149.00
Juice & Cider						
CA	198.0	190.0	180.0	213.00	178.00	164.00
MI	135.0	200.0	160.0	105.00	95.00	110.00
NY	65.0	200.0	200.0	100.00	104.00	96.00
NC	38.0	34.0	12.0	130.00	137.00	103.00
OR	28.0	22.0	27.0	76.00	65.00	37.00
PA	86.0	75.0	52.0	109.00	100.00	100.00
VA	33.0	47.0	24.0	107.00	101.00	99.00
WA	760.0	530.0	1,110.0	73.00	77.00	40.00
WV	15.0	14.0	13.0	104.00	104.00	104.00
Oth Sts	121.3	122.5	156.7	111.00	110.00	123.00
US	1,479.3	1,434.5	1,934.7	104.00	103.00	73.00

See footnote(s) at end of table.

--continued

**Apples, Commercial: Processed Utilization, Use, and Price
by State and United States, 2002-2004 ¹ (continued)**

Use and State	Processed Utilization					
	Quantity			Price per Ton		
	2002	2003	2004	2002	2003	2004
	<i>Million Pounds</i>	<i>Million Pounds</i>	<i>Million Pounds</i>	<i>Dollars</i>	<i>Dollars</i>	<i>Dollars</i>
Frozen						
MI	90.0	180.0		210.00	185.00	
NY	20.0	50.0	50.0	182.00	164.00	228.00
Oth Sts	81.7	52.8	206.0	135.00	141.00	158.00
US	191.7	282.8	256.0	175.00	173.00	172.00
Dried						
US	207.9	182.2	201.8	108.00	107.00	77.30
Fresh Slices						
US ²			47.0			184.00
Other ³						
MI	5.0	10.0	10.0	245.00	140.00	180.00
NY	7.0	30.0	30.0	120.00	132.00	84.00
Oth Sts	38.5	66.1	51.0	158.00	164.00	114.00
US	50.5	106.1	91.0	161.00	152.00	111.00

¹ Missing data included in Other States to avoid disclosure of individual operations.

² Estimates initiated July, 2005.

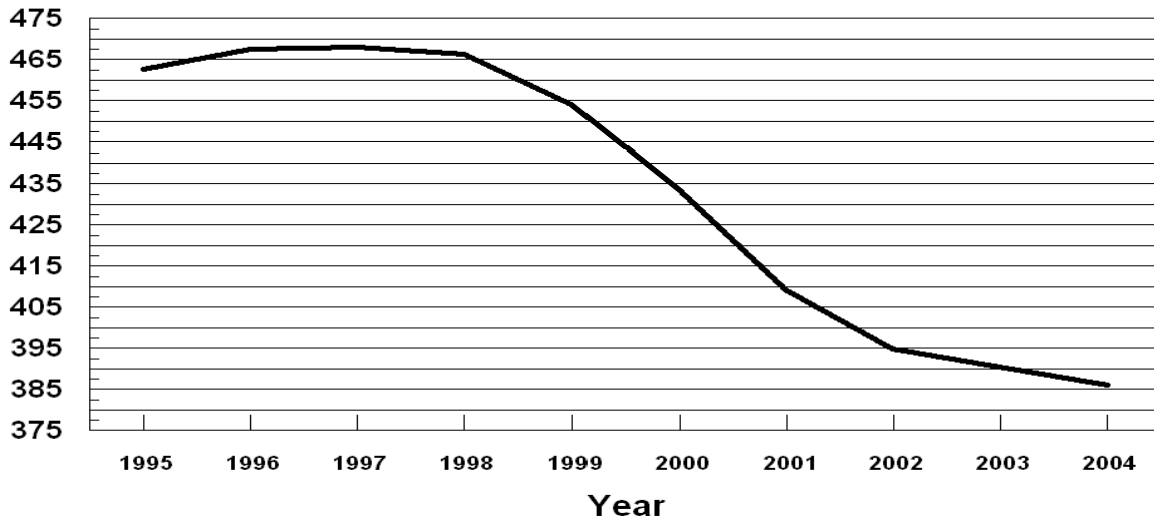
³ Includes vinegar, wine, and other processed utilizations not individually listed in this table.

U. S. Apples

Bearing Acres

1995 - 2004

(000) Acres

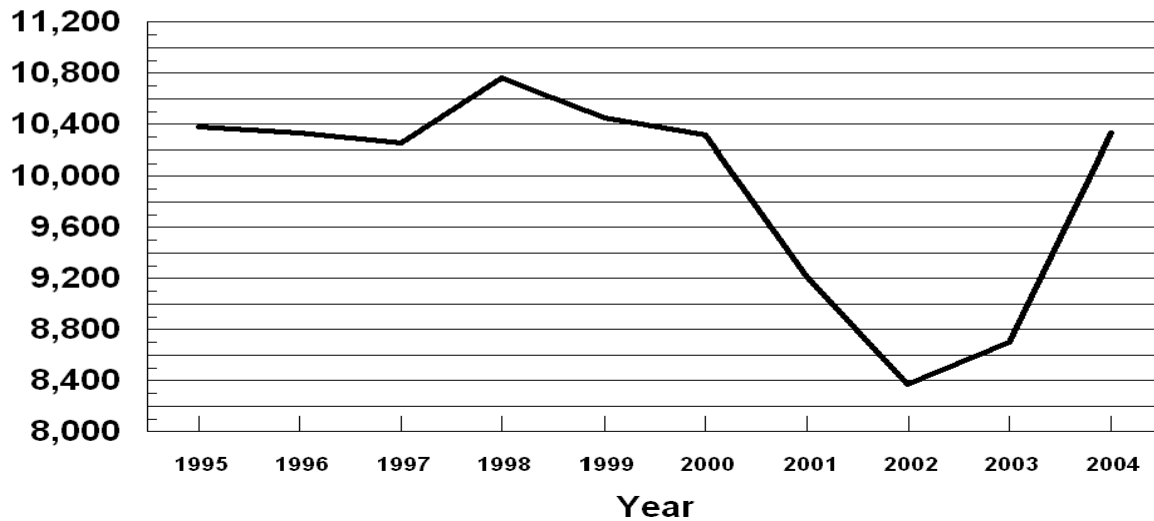


U. S. Apples

Utilized Production

1995 - 2004

Million Pounds



**Miscellaneous Fruits: Bearing Acreage, Yield, Production, and Utilization
by State and United States, 2002-2004**

Crop, State, and Season	Bearing Acreage	Yield Per Acre ¹	Production		Utilization	
			Total	Utilized	Fresh	Processed
	<i>Acres</i>	<i>Tons</i>	<i>Tons</i>	<i>Tons</i>	<i>Tons</i>	<i>Tons</i>
Apricots ²						
CA						
2002	16,000	5.31	85,000	75,000	14,000	61,000
2003	16,500	5.61	92,500	92,500	22,000	70,500
2004	16,000	5.88	94,000	85,500	17,900	67,600
UT						
2002			140	130		
2003			180	160		
2004			330	290		
WA						
2002			4,900	4,900		
2003			4,900	4,900		
2004			6,800	6,800		
US						
2002	17,340	5.19	90,040	80,030	18,290	61,740
2003	17,840	5.47	97,580	97,560	26,250	71,310
2004	17,340	5.83	101,130	92,590	23,650	68,940
Avocados						
CA						
2002-03	59,500	2.82	168,000	168,000	168,000	
2003-04	60,500	3.57	216,000	216,000	216,000	
2004-05	62,000	2.82	175,000	175,000	175,000	
FL						
2002-03	5,900	5.25	31,000	31,000	31,000	
2003-04	6,100	2.79	17,000	17,000	17,000	
2004-05	6,400	4.38	28,000	28,000	28,000	
HI						
2002-03	250	1.40	350	350	350	
2003-04	300	1.27	380	380	380	
2004-05	270	1.37	370	370	370	
US						
2002-03	65,650	3.04	199,350	199,350	199,350	
2003-04	66,900	3.49	233,380	233,380	233,380	
2004-05	68,670	2.96	203,370	203,370	203,370	
Dates						
CA						
2002	4,800	5.04	24,200	24,200	24,200	
2003	4,700	3.81	17,900	17,900	17,900	
2004	5,200	3.15	16,400	16,400	16,400	

¹ Yield is based on total production.

² Missing data not published to avoid disclosure of individual operations.

**Miscellaneous Fruits: Price and Value by State
and United States, 2002-2004¹**

Crop, State, and Season	Price per Ton			Value of Production		
	Fresh	Processed	All	Fresh	Processed	Total
	<i>Dollars</i>	<i>Dollars</i>	<i>Dollars</i>	<i>1,000 Dollars</i>	<i>1,000 Dollars</i>	<i>1,000 Dollars</i>
Apricots ²						
CA						
2002	490.00	271.00	306.00	6,860	16,104	22,964
2003	492.00	264.00	316.00	10,824	18,397	29,221
2004	538.00	283.00	334.00	9,630	18,945	28,575
UT						
2002			708.00			92
2003			588.00			94
2004			610.00			177
WA						
2002			1,120.00			5,509
2003			1,100.00			5,387
2004			921.00			6,260
US						
2002	678.00	268.00	357.00	12,405	16,160	28,565
2003	618.00	262.00	356.00	16,234	18,468	34,702
2004	672.00	279.00	378.00	15,897	19,115	35,012
Avocados						
CA						
2002-03	2,170.00		2,170.00	364,560		364,560
2003-04	1,760.00		1,760.00	380,160		380,160
2004-05	1,600.00		1,600.00	280,000		280,000
FL						
2002-03	556.00		556.00	17,236		17,236
2003-04	808.00		808.00	13,736		13,736
2004-05	516.00		516.00	14,448		14,448
HI						
2002-03	1,120.00		1,120.00	392		392
2003-04	1,240.00		1,240.00	471		471
2004-05	1,260.00		1,260.00	466		466
US						
2002-03	1,920.00		1,920.00	382,188		382,188
2003-04	1,690.00		1,690.00	394,367		394,367
2004-05	1,450.00		1,450.00	294,914		294,914
Dates						
CA						
2002	1,550.00		1,550.00	37,510		37,510
2003	2,300.00		2,300.00	41,170		41,170
2004	2,500.00		2,500.00	41,000		41,000

¹ Missing data not published to avoid disclosure of individual operations.

² Apricot processed price excludes dried. Processing value includes dried.

**Miscellaneous Fruits: Bearing Acreage, Yield, Production, and Utilization
by State and United States, 2002-2004 ¹**

Crop, State, and Season	Bearing Acreage	Yield Per Acre ²	Production		Utilization	
			Total	Utilized	Fresh	Processed
	<i>Acres</i>	<i>Tons</i>	<i>Tons</i>	<i>Tons</i>	<i>Tons</i>	<i>Tons</i>
Figs						
CA						
2002	13,500	3.94	53,200	53,200	2,250	50,950
2003 ³	13,000	3.73	48,500	48,500	2,900	45,600
2004 ³	12,500	4.06	50,800	50,800	3,100	47,700
Kiwifruit						
CA						
2002	4,500	5.80	26,100	23,100	22,300	800
2003	4,500	5.64	25,400	24,000	22,000	2,000
2004	4,500	5.93	26,700	24,700	22,500	2,200
Nectarines						
CA ⁴						
2002	36,500	8.22	300,000	300,000	300,000	
2003	36,500	7.48	273,000	273,000	273,000	
2004	36,500	7.37	269,000	252,000	252,000	
Olives						
CA						
2002	36,000	2.86	103,000	103,000	500	102,500
2003	36,000	3.28	118,000	118,000	500	117,500
2004	32,000	3.25	104,000	104,000	500	103,500
Plums						
CA						
2002	36,000	5.58	201,000	201,000		
2003	36,000	5.81	209,000	209,000		
2004	36,000	4.33	156,000	144,000		

¹ Missing data not published to avoid disclosure of individual operations.

² Yield is based on total production.

³ Small quantities of canned figs are included in fresh to avoid disclosure of individual operations.

⁴ Small quantities of processed nectarines are included in fresh to avoid disclosure of individual operations.

**Miscellaneous Fruits: Price and Value by State
and United States, 2002-2004 ¹**

Crop, State, and Season	Price per Ton			Value of Production		
	Fresh <i>Dollars</i>	Processed <i>Dollars</i>	All <i>Dollars</i>	Fresh <i>1,000 Dollars</i>	Processed <i>1,000 Dollars</i>	Total <i>1,000 Dollars</i>
Figs						
CA						
2002			340.00			18,087
2003			317.00			15,373
2004			383.00			19,463
Kiwifruit						
CA						
2002			783.00			18,097
2003			853.00			20,472
2004			809.00			19,977
Nectarines						
CA ²						
2002	382.00		382.00	114,600		114,600
2003	436.00		436.00	119,028		119,028
2004	342.00		342.00	86,278		86,278
Olives						
CA						
2002	500.00	573.00	573.00	250	58,733	58,983
2003	500.00	409.00	409.00	250	48,039	48,289
2004	500.00	571.00	571.00	250	59,129	59,379
Plums						
CA						
2002			386.00			77,586
2003			418.00			87,362
2004			516.00			74,347

¹ Missing data not published to avoid disclosure of individual operations.

² Small quantities of processed nectarines are included in fresh to avoid disclosure of individual operations.

**Miscellaneous Fruits: Bearing Acreage, Yield, Production, and Utilization
by State and United States, 2002-2004 ¹**

Crop, State, and Season	Bearing Acreage	Yield Per Acre ²	Production		Utilization	
			Total	Utilized	Fresh	Processed
	<i>Acres</i>	<i>Tons</i>	<i>Tons</i>	<i>Tons</i>	<i>Tons</i>	<i>Tons</i>
Prunes & Plums						
ID						
2002			2,000	1,950		
2003			2,500	2,480		
2004			4,000	3,920		
MI						
2002	800	0.31	250	240	60	180
2003	800	4.50	3,600	3,600	1,100	2,500
2004	750	3.33	2,500	2,000	350	1,650
OR						
2002	1,900	4.21	8,000	7,200		
2003	1,900	2.89	5,500	4,100		
2004	1,900	6.84	13,000	7,500		
WA						
2002			5,400	5,400		
2003			4,700	4,700		
2004			5,500	5,500		
4-State Total						
2002	4,010	3.90	15,650	14,790	6,360	8,430
2003	4,010	4.06	16,300	14,880	7,700	7,180
2004	3,960	6.31	25,000	18,920	10,350	8,570
Prunes (Dried Basis)						
CA						
2002	74,000	2.32	172,000	163,000		163,000
2003	72,000	2.51	181,000	168,000		168,000
2004	70,000	0.70	49,000	48,000		48,000

¹ Missing data not published to avoid disclosure of individual operations.

² Yield is based on total production.

**Miscellaneous Fruits: Price and Value by State
and United States, 2002-2004 ¹**

Crop, State, and Season	Price per Ton			Value of Production		
	Fresh	Processed	All	Fresh	Processed	Total
	<i>Dollars</i>	<i>Dollars</i>	<i>Dollars</i>	<i>1,000 Dollars</i>	<i>1,000 Dollars</i>	<i>1,000 Dollars</i>
Prunes & Plums						
ID						
2002			536.00			1,045
2003			518.00			1,284
2004			613.00			2,401
MI						
2002	600.00	278.00	358.00	36	50	86
2003	480.00	300.00	355.00	528	750	1,278
2004	769.00	264.00	353.00	269	436	705
OR						
2002			251.00			1,808
2003			272.00			1,114
2004			352.00			2,637
WA						
2002			240.00			1,298
2003			337.00			1,584
2004			193.00			1,059
4-State Total						
2002	396.00	204.00	286.00	2,521	1,716	4,237
2003	446.00	254.00	353.00	3,434	1,826	5,260
2004	468.00	228.00	360.00	4,847	1,955	6,802
Prunes (Dried Basis)						
CA						
2002		810.00	810.00		132,030	132,030
2003		772.00	772.00		129,696	129,696
2004		1,500.00	1,500.00		72,000	72,000

¹ Missing data not published to avoid disclosure of individual operations.

**Miscellaneous Fruits: Processed Utilization, Use, and Price
by State and United States, 2002-2004 ¹**

Crop, Use, and State	Processed Utilization					
	Quantity			Price per Ton		
	2002	2003	2004	2002	2003	2004
	<i>Tons</i>	<i>Tons</i>	<i>Tons</i>	<i>Dollars</i>	<i>Dollars</i>	<i>Dollars</i>
Apricots						
Canned						
CA	30,500	30,000		286.00	298.00	
Juice						
CA	7,000	9,200		158.00	210.00	
Frozen						
CA	10,500	11,000	9,700	299.00	313.00	308.00
Dried (Fresh Basis)						
CA	8,000	6,800	11,800	223.00	233.00	269.00
Figs						
Dried (Fresh Basis)						
CA	50,700	45,600	47,700	301.00	276.00	315.00
Olives						
Canned						
CA	82,800	96,000	74,400	662.00	458.00	701.00
Crushed for Oil						
CA	6,000	7,500	8,000	240.00	238.00	361.00
Limited						
CA	9,900	10,500	16,100	249.00	215.00	252.00
Undersized						
CA	3,800	3,500	5,000	8.00	8.00	6.00
Prunes & Plums						
Canned						
4-State Total	3,340	3,100	3,140	175.00	255.00	196.00
Frozen						
4-State Total	1,160	1,300	1,040	147.00	339.00	289.00
Dried & Other						
4-State Total	3,930	2,780	4,390	245.00	214.00	237.00

¹ Missing data not published to avoid disclosure of individual operations.

**Olives: Variety and Total Production, California
2002-2004**

Variety	Total Production		
	2002	2003	2004
	<i>Tons</i>	<i>Tons</i>	<i>Tons</i>
Manzanillo	68,000	102,000	78,000
Sevillano	23,500	13,000	24,000
All Other ¹	11,500	3,000	2,000
Total	103,000	118,000	104,000

¹ Includes production for varieties that were or will be used for canned, oil, and other specialty products.

California Dry Fruits: Production, Use, and Price, 2002-2004

Crop	Quantity			Price per Ton		
	2002	2003	2004	2002	2003	2004
	<i>Tons</i>	<i>Tons</i>	<i>Tons</i>	<i>Dollars</i>	<i>Dollars</i>	<i>Dollars</i>
Fresh Basis						
Apricots	8,000	6,800	11,800	223.00	233.00	269.00
Figs	50,700	45,600	47,700	301.00	276.00	315.00
Grapes						
Raisin	1,887,000	1,578,000	1,086,000	91.40	124.00	298.00
Table	20,000	19,000	13,000	128.00	167.00	303.00
Peaches						
Freestone	14,200	10,150	10,400	49.00	47.00	32.00
Pears						
Bartlett	3,000	4,000	4,000	202.00	206.00	160.00
Prunes	492,000	536,000	141,000	268.00	242.00	511.00
Dried Basis						
Apricots ¹	1,120	900	1,630	1,590.00	1,760.00	1,950.00
Figs ²						
Standard	15,000	13,300	14,200	1,010.00	938.00	1,050.00
Sub-Std.	1,900	1,900	1,700	50.00	60.00	60.00
Grapes						
Raisin ^{3 4}	438,900	347,700	262,900	393.00	563.00	1,230.00
Table ⁵	4,500	4,200	3,200	568.00	757.00	1,230.00
Peaches ⁶						
Freestone	1,525	1,070	870	456.00	446.00	382.00
Pears ⁷						
Bartlett	460	610	620	1,315.00	1,350.00	1,030.00
Prunes ⁸	163,000	168,000	48,000	810.00	772.00	1,500.00

¹ Dried basis 1 ton of dried apricots equivalent to 7.14 for 2002, 7.56 tons for 2003, and 7.24 tons for 2004.

² Dried basis 1 ton of all figs equivalent to 3.00 tons for 2002, 2003, and 2004.

³ Includes substandard raisins diverted to other uses.

⁴ Dried basis 1 ton of raisins equivalent to 4.30 tons for 2002, 4.54 tons for 2003, and 4.13 tons for 2004.

⁵ Dried basis 1 ton of table type raisins equivalent to 4.44 tons for 2002, 4.52 tons for 2003, and 4.06 tons for 2004.

⁶ Dried basis 1 ton of Freestone peaches equivalent to 9.31 tons for 2002, 9.49 tons for 2003, and 11.95 tons for 2004.

⁷ Dried basis 1 ton of Bartlett pears equivalent to 6.52 tons for 2002, 6.56 tons for 2003, and 6.45 tons for 2004.

⁸ Dried basis 1 ton of dried prunes equivalent to 3.02 tons for 2002, 3.19 tons for 2003, and 2.94 tons for 2004.

**Strawberries for Fresh Market and Processing: Area Planted and Harvested,
Yield, Production, and Value by State and United States, 2002-2004**

State	Area Planted			Area Harvested		
	2002	2003	2004	2002	2003	2004
	<i>Acres</i>	<i>Acres</i>	<i>Acres</i>	<i>Acres</i>	<i>Acres</i>	<i>Acres</i>
CA	28,500	29,600	33,200	28,500	29,600	33,200
FL	6,900	7,100	7,100	6,900	7,100	7,100
MI	1,300	1,200	1,100	1,200	1,100	900
NY	1,700	1,700	1,700	1,400	1,500	1,500
NC	1,900	1,800	1,700	1,800	1,700	1,600
OH	1,000	1,000	1,000	800	800	800
OR	3,500	3,500	3,300	3,000	2,600	2,400
PA	1,300	1,300	1,300	1,300	1,300	1,300
WA	1,800	1,800	1,900	1,800	1,800	1,900
WI	1,000	1,000	1,000	900	900	900
US	48,900	50,000	53,300	47,600	48,400	51,600
	Yield per Acre			Production		
	2002	2003	2004	2002	2003	2004
	<i>Cwt</i>	<i>Cwt</i>	<i>Cwt</i>	<i>1,000 Cwt</i>	<i>1,000 Cwt</i>	<i>1,000 Cwt</i>
CA	565	645	590	16,097	19,092	19,588
FL	255	220	230	1,760	1,562	1,633
MI	47	57	46	56	63	41
NY	45	33	43	63	50	65
NC	125	100	110	225	170	176
OH	35	48	48	28	38	38
OR	115	115	135	338	295	324
PA	56	64	61	73	83	79
WA	90	90	80	162	162	152
WI	48	50	46	43	45	41
US	396	445	429	18,845	21,560	22,137
	Value					
	Per Cwt			Total		
	2002	2003	2004	2002	2003	2004
	<i>Dollars</i>	<i>Dollars</i>	<i>Dollars</i>	<i>1,000 Dollars</i>	<i>1,000 Dollars</i>	<i>1,000 Dollars</i>
CA	57.90	61.40	62.20	931,649	1,172,537	1,218,860
FL	87.20	82.70	109.00	153,472	129,177	177,997
MI	93.40	100.00	97.70	5,228	6,320	4,005
NY	140.00	155.00	160.00	8,820	7,750	10,400
NC	85.00	90.00	90.00	19,125	15,300	15,840
OH	124.00	120.00	134.00	3,472	4,560	5,092
OR	49.20	49.70	48.90	16,613	14,675	15,839
PA	137.00	134.00	137.00	10,001	11,122	10,823
WA	51.00	52.10	47.80	8,262	8,436	7,270
WI	116.00	117.00	125.00	4,988	5,265	5,125
US	61.60	63.80	66.50	1,161,630	1,375,142	1,471,251

**Strawberries for Fresh Market and Processing: Production and Value
by Utilization, State, and United States, 2002-2004**

Utilization and State	Production					
	2002		2003		2004	
	<i>1,000 Cwt</i>		<i>1,000 Cwt</i>		<i>1,000 Cwt</i>	
Fresh Market						
CA	11,779		14,377		14,830	
FL	1,760		1,562		1,633	
MI	51		58		36	
NY	63		50		65	
NC	225		170		176	
OH	28		38		38	
OR	23		20		29	
PA	73		83		79	
WA	18		21		17	
WI	43		45		41	
US	14,063		16,424		16,944	
Processing						
CA	4,318		4,715		4,758	
MI	5		5		5	
OR	315		275		295	
WA	144		141		135	
US	4,782		5,136		5,193	
	Value					
	Per Unit			Total		
	2002	2003	2004	2002	2003	2004
	<i>Dollars Per Cwt</i>	<i>Dollars Per Cwt</i>	<i>Dollars Per Cwt</i>	<i>1,000 Dollars</i>	<i>1,000 Dollars</i>	<i>1,000 Dollars</i>
Fresh Market						
CA	67.40	72.80	74.20	793,905	1,046,646	1,100,386
FL	87.20	82.70	109.00	153,472	129,177	177,997
MI	98.00	105.00	105.00	4,998	6,090	3,780
NY	140.00	155.00	160.00	8,820	7,750	10,400
NC	85.00	90.00	90.00	19,125	15,300	15,840
OH	124.00	120.00	134.00	3,472	4,560	5,092
OR	106.00	115.00	124.00	2,438	2,300	3,596
PA	137.00	134.00	137.00	10,001	11,122	10,823
WA	107.00	113.00	110.00	1,926	2,373	1,870
WI	116.00	117.00	125.00	4,988	5,265	5,125
US	71.30	74.90	78.80	1,003,145	1,230,583	1,334,909
Processing						
CA	31.90	26.70	24.90	137,744	125,891	118,474
MI	46.00	46.00	45.00	230	230	225
OR	45.00	45.00	41.50	14,175	12,375	12,243
WA	44.00	43.00	40.00	6,336	6,063	5,400
US	33.10	28.10	26.30	158,485	144,559	136,342

**Berries: Harvested Acreage, Yield, Production, and Utilization
by Crop, State, and United States, 2002-2004**

Crop, State, and Year	Area Harvested	Yield Per Acre ¹	Production		Utilization	
			Total	Utilized	Fresh	Processed
	<i>Acres</i>	<i>Pounds</i>	<i>1,000 Pounds</i>	<i>1,000 Pounds</i>	<i>1,000 Pounds</i>	<i>1,000 Pounds</i>
Cultivated Blueberries						
AL						
2002 ²	300	1,430	670	430	430	
2003 ²	320	1,410	600	450	450	
2004 ²	300	1,900	980	570	570	
AR						
2002 ²	600	2,950	1,860	1,770	1,770	
2003 ²	550	2,820	1,650	1,550	1,550	
2004 ²	530	3,400	1,900	1,800	1,800	
FL						
2002 ²	1,600	1,810	3,100	2,900	2,900	
2003 ²	1,900	1,840	3,800	3,500	3,500	
2004 ²	2,300	2,430	6,000	5,600	5,600	
GA						
2002	4,500	3,780	17,000	17,000	8,000	9,000
2003	4,500	3,780	17,000	17,000	8,000	9,000
2004	4,800	4,380	21,000	21,000	10,000	11,000
IN						
2002	650	4,620	3,100	3,000	1,500	1,500
2003	600	3,000	1,900	1,800	1,300	500
2004	600	5,000	3,100	3,000	1,500	1,500
MI						
2002	16,900	3,790	64,000	64,000	22,000	42,000
2003	15,900	3,900	62,000	62,000	24,000	38,000
2004	17,400	4,600	80,000	80,000	36,000	44,000
NJ						
2002	7,400	5,680	43,000	42,000	37,000	5,000
2003	7,500	5,330	41,000	40,000	33,000	7,000
2004	7,500	5,200	39,000	39,000	33,000	6,000
NY						
2002	700	2,710	2,100	1,900	1,800	100
2003	700	2,860	2,100	2,000	1,950	50
2004	700	2,430	2,000	1,700	1,400	300
NC						
2002	3,700	4,190	17,000	15,500	11,300	4,200
2003	4,200	5,360	22,500	22,500	16,100	6,400
2004	4,400	5,200	22,900	22,900	16,400	6,500
OR						
2002	3,400	7,790	26,500	26,500	11,000	15,500
2003	3,300	7,240	23,900	23,900	10,400	13,500
2004	3,500	9,710	34,000	34,000	13,400	20,600
WA						
2002	2,100	6,500	13,650	13,650	2,850	10,800
2003	2,200	6,000	13,200	13,200	3,400	9,800
2004	2,400	7,500	18,000	18,000	5,000	13,000
US						
2002	41,850	4,510	191,980	188,650	100,490	88,160
2003	41,670	4,510	189,650	187,900	103,620	84,280
2004	44,430	5,120	228,880	227,570	124,550	103,020
Wild Blueberries						
ME						
2002			62,400	62,400	400	62,000
2003			80,400	80,400	400	80,000
2004			46,000	46,000	300	45,700

¹ Yield is based on utilized production.

² Small quantities of processed blueberries are included in fresh to avoid disclosure of individual operations.

**Berries: Price and Value by Crop, State,
and United States, 2002-2004**

Crop, State and Year	Price per Pound			Value of Production		
	Fresh	Processed	All	Fresh	Processed	Total
	<i>Dollars</i>	<i>Dollars</i>	<i>Dollars</i>	<i>1,000 Dollars</i>	<i>1,000 Dollars</i>	<i>1,000 Dollars</i>
Cultivated Blueberries						
AL						
2002 ¹	0.944		0.944	406		406
2003 ¹	1.070		1.070	482		482
2004 ¹	1.230		1.230	699		699
AR						
2002 ¹	1.150		1.150	2,040		2,040
2003 ¹	1.330		1.330	2,067		2,067
2004 ¹	1.230		1.230	2,216		2,216
FL						
2002 ¹	6.400		6.400	18,560		18,560
2003 ¹	5.200		5.200	18,200		18,200
2004 ¹	4.500		4.500	25,200		25,200
GA						
2002	1.570	0.540	1.020	12,560	4,860	17,420
2003	1.640	0.630	1.110	13,120	5,670	18,790
2004	1.640	0.670	1.130	16,400	7,370	23,770
IN						
2002	1.220	0.620	0.920	1,830	930	2,760
2003	1.320	0.780	1.170	1,716	390	2,106
2004	1.330	0.850	1.090	1,995	1,275	3,270
MI						
2002	1.210	0.610	0.816	26,620	25,620	52,240
2003	1.300	0.840	1.020	31,200	31,905	63,105
2004	1.600	0.900	1.220	57,600	39,610	97,210
NJ						
2002	1.170	0.700	1.110	43,290	3,500	46,790
2003	1.200	0.870	1.140	39,600	6,090	45,690
2004	1.210	0.950	1.170	39,930	5,700	45,630
NY						
2002	1.380	0.660	1.340	2,484	66	2,550
2003	1.300	0.860	1.290	2,535	43	2,578
2004	1.450	0.950	1.360	2,030	285	2,315
NC						
2002	1.760	0.630	1.450	19,888	2,646	22,534
2003	1.850	0.780	1.550	29,785	4,992	34,777
2004	1.700	0.670	1.410	27,880	4,355	32,235
OR						
2002	1.000	0.550	0.737	11,000	8,525	19,525
2003	1.090	0.700	0.870	11,336	9,450	20,786
2004	0.970	0.700	0.806	12,998	14,420	27,418
WA						
2002	1.220	0.580	0.714	3,477	6,264	9,741
2003	1.330	0.770	0.914	4,522	7,546	12,068
2004	1.250	0.750	0.889	6,250	9,750	16,000
US						
2002	1.410	0.595	1.030	142,086	52,480	194,566
2003	1.490	0.784	1.170	154,533	66,116	220,649
2004	1.550	0.805	1.210	193,058	82,905	275,963
Wild Blueberries						
ME						
2002	1.250	0.280	0.286	500	17,360	17,860
2003	1.200	0.330	0.334	480	26,400	26,880
2004	1.350	0.450	0.456	405	20,565	20,970

¹ Small quantities of processed blueberries are included in fresh to avoid disclosure of individual operations.

**Berries: Harvested Acreage, Yield, Production, and Utilization
by Crop, State, and United States, 2002-2004**

Crop, State, and Year	Area Harvested	Yield Per Acre ¹	Production		Utilization	
			Total	Utilized	Fresh	Processed
	<i>Acres</i>	<i>Pounds</i>	<i>1,000 Pounds</i>	<i>1,000 Pounds</i>	<i>1,000 Pounds</i>	<i>1,000 Pounds</i>
Boysenberries						
CA ²						
2002	210	8,100	1,700	1,700		
2003	200	6,000	1,200	1,200		
2004	200	10,000	2,000	2,000		
OR						
2002	900	3,670	3,330	3,300	200	3,100
2003	800	3,880	3,100	3,100	200	2,900
2004	750	4,270	3,200	3,200	200	3,000
US ²						
2002	1,110	4,500	5,030	5,000		
2003	1,000	4,300	4,300	4,300		
2004	950	5,470	5,200	5,200		
Loganberries						
OR						
2002	70	3,710	270	260	160	100
2003	70	2,710	190	190	70	120
2004	60	2,830	180	170	20	150
Black Raspberries						
OR						
2002	1,200	2,420	2,940	2,900	20	2,880
2003	1,100	2,090	2,400	2,300	10	2,290
2004	1,000	2,200	2,200	2,200	10	2,190
Red Raspberries						
OR						
2002	2,200	3,450	7,600	7,600	1,300	6,300
2003	2,000	2,600	5,200	5,200	1,000	4,200
2004	1,900	3,530	6,700	6,700	1,100	5,600
WA						
2002	9,500	7,800	74,100	74,100	5,200	68,900
2003	9,200	7,300	67,700	67,200	1,400	65,800
2004	9,000	6,700	60,300	60,300	1,500	58,800
US						
2002	11,700	6,980	81,700	81,700	6,500	75,200
2003	11,200	6,460	72,900	72,400	2,400	70,000
2004	10,900	6,150	67,000	67,000	2,600	64,400
All Raspberries						
CA ²						
2002	2,400	12,200	29,200	29,200		
2003	3,000	20,500	61,500	61,500		
2004	3,200	20,800	66,500	66,500		

¹ Yield is based on utilized production.

² No breakdown of utilization available.

**Berries: Price and Value by Crop, State,
and United States, 2002-2004**

Crop, State, and Year	Price per Pound			Value of Production		
	Fresh	Processed	All	Fresh	Processed	Total
	<i>Dollars</i>	<i>Dollars</i>	<i>Dollars</i>	<i>1,000 Dollars</i>	<i>1,000 Dollars</i>	<i>1,000 Dollars</i>
Boysenberries						
CA ¹						
2002			0.816			1,388
2003			0.891			1,069
2004			1.200			2,400
OR						
2002	1.290	0.540	0.585	258	1,674	1,932
2003	1.390	0.820	0.857	278	2,378	2,656
2004	1.490	1.090	1.120	298	3,270	3,568
US ¹						
2002			0.664			3,320
2003			0.866			3,725
2004			1.150			5,968
Loganberries						
OR						
2002	1.000	0.500	0.808	160	50	210
2003	1.330	0.800	0.990	93	96	189
2004	1.140	0.720	0.771	23	108	131
Black Raspberries						
OR						
2002	1.930	0.400	0.411	39	1,152	1,191
2003	1.820	1.360	1.360	18	3,114	3,132
2004	2.430	2.250	2.250	24	4,928	4,952
Red Raspberries						
OR						
2002	1.220	0.630	0.731	1,586	3,969	5,555
2003	1.280	0.700	0.812	1,280	2,940	4,220
2004	1.370	0.760	0.860	1,507	4,256	5,763
WA						
2002	1.150	0.450	0.499	5,980	31,005	36,985
2003	1.670	0.520	0.544	2,338	34,216	36,554
2004	1.690	0.750	0.773	2,535	44,100	46,635
US						
2002	1.160	0.465	0.521	7,566	34,974	42,540
2003	1.510	0.531	0.563	3,618	37,156	40,774
2004	1.550	0.751	0.782	4,042	48,356	52,398
All Raspberries						
CA ¹						
2002			1.400			40,851
2003			2.080			127,920
2004			2.090			138,985

¹ No breakdown of utilization available.

**Oregon Blackberries: Harvested Acreage, Yield, Production, and
Utilization by Variety, 2002-2004**

Variety and Year	Area Harvested	Yield Per Acre ¹	Production		Utilization	
			Total	Utilized	Fresh	Processed
	<i>Acres</i>	<i>Pounds</i>	<i>1,000 Pounds</i>	<i>1,000 Pounds</i>	<i>1,000 Pounds</i>	<i>1,000 Pounds</i>
Cultivated Blackberries (OR)						
Marion						
2002	4,400	7,230	31,800	31,800	300	31,500
2003	4,400	6,270	28,000	27,600	400	27,200
2004	4,300	6,580	28,300	28,300	300	28,000
Evergreen						
2002	1,100	6,000	6,900	6,600	300	6,300
2003	1,000	6,300	6,400	6,300	200	6,100
2004	900	6,440	5,800	5,800	300	5,500
Other						
2002	1,000	8,400	8,400	8,400	800	7,600
2003	1,000	7,800	7,900	7,800	1,500	6,300
2004	1,100	11,600	12,800	12,800	1,000	11,800
All						
2002	6,500	7,200	47,100	46,800	1,400	45,400
2003	6,400	6,520	42,300	41,700	2,100	39,600
2004	6,300	7,440	46,900	46,900	1,600	45,300

¹ Yield is based on utilized production.

Oregon Blackberries: Price and Value by Variety, 2002-2004

Variety and Year	Price per Pound			Value of Production		
	Fresh	Processed	All	Fresh	Processed	Total
	<i>Dollars</i>	<i>Dollars</i>	<i>Dollars</i>	<i>1,000 Dollars</i>	<i>1,000 Dollars</i>	<i>1,000 Dollars</i>
Cultivated Blackberries (OR)						
Marion						
2002	1.160	0.415	0.422	348	13,073	13,421
2003	1.160	0.680	0.687	464	18,496	18,960
2004	1.220	0.740	0.745	366	20,720	21,086
Evergreen						
2002	0.930	0.285	0.314	279	1,795	2,074
2003	0.990	0.690	0.700	198	4,209	4,407
2004	1.020	0.590	0.612	306	3,245	3,551
Other						
2002	1.170	0.560	0.618	936	4,256	5,192
2003	1.100	0.630	0.720	1,650	3,969	5,619
2004	1.100	0.650	0.685	1,100	7,670	8,770
All						
2002	1.120	0.421	0.442	1,563	19,124	20,687
2003	1.100	0.674	0.695	2,312	26,674	28,986
2004	1.110	0.698	0.712	1,772	31,635	33,407

**Sweet Cherries: Bearing Acreage, Yield, Production, and Utilization
by State and United States, 2002-2004 ¹**

State and Year	Bearing Acreage	Yield Per Acre ²	Production		Utilization	
			Total	Utilized	Fresh	Processed
	<i>Acres</i>	<i>Tons</i>	<i>Tons</i>	<i>Tons</i>	<i>Tons</i>	<i>Tons</i>
CA						
2002	24,000	2.31	55,500	53,700	43,300	10,400
2003	25,000	2.62	65,600	63,900	51,600	12,300
2004	26,000	2.81	73,000	70,300	57,700	12,600
ID						
2002			1,700	1,700		
2003			2,900	2,900		
2004			3,100	3,100		
MI						
2002	8,100	0.33	2,700	2,600	200	2,400
2003	8,100	1.60	13,000	13,000	500	12,500
2004	8,100	3.05	24,700	24,700	500	24,200
MT						
2002			2,350	2,220		
2003			2,060	1,850		
2004			2,360	2,220		
NY						
2002	750	0.47	350	350		
2003	700	0.86	600	590		
2004	700	1.29	900	890		
OR						
2002	11,500	2.70	31,000	29,000	13,000	16,000
2003	12,000	3.42	41,000	41,000	22,000	19,000
2004	12,000	3.58	43,000	42,000	22,000	20,000
PA						
2002			355	355	355	
2003			340	340	340	
2004			400	350	350	
UT						
2002	650	0.62	400	380	140	240
2003	650	3.38	2,200	2,000	1,000	1,000
2004	650	2.46	1,600	1,600	850	750
WA						
2002	26,000	3.35	87,000	87,000	66,000	21,000
2003	27,000	4.37	118,000	118,000	96,000	22,000
2004	29,000	4.62	134,000	134,000	99,000	35,000
US						
2002	72,730	2.49	181,355	177,305	126,595	50,710
2003	74,990	3.28	245,700	243,580	175,570	68,010
2004	78,275	3.62	283,060	279,160	185,050	94,110

¹ Missing data not published to avoid disclosure of individual operations.

² Yield is based on total production.

**Sweet Cherries: Price and Value by State
and United States, 2002-2004¹**

State and Year	Price per Ton			Value of Production		
	Fresh	Processed	All	Fresh	Processed	All
	<i>Dollars</i>	<i>Dollars</i>	<i>Dollars</i>	<i>1,000 Dollars</i>	<i>1,000 Dollars</i>	<i>1,000 Dollars</i>
CA						
2002	2,090.00	271.00	1,740.00	90,497	2,818	93,315
2003	1,980.00	383.00	1,670.00	102,168	4,715	106,883
2004	2,020.00	524.00	1,750.00	116,554	6,602	123,156
ID						
2002			1,490.00			2,533
2003			1,400.00			4,056
2004			1,400.00			4,323
MI						
2002	2,540.00	714.00	855.00	508	1,714	2,222
2003	2,230.00	774.00	830.00	1,115	9,680	10,795
2004	2,020.00	632.00	660.00	1,010	15,301	16,311
MT						
2002			1,840.00			4,082
2003			1,710.00			3,163
2004			2,020.00			4,473
NY						
2002			1,730.00			605
2003			1,770.00			1,046
2004			1,400.00			1,245
OR						
2002	1,190.00	722.00	932.00	15,470	11,552	27,022
2003	1,320.00	811.00	1,080.00	29,040	15,410	44,450
2004	1,470.00	802.00	1,150.00	32,340	16,040	48,380
PA						
2002	2,480.00		2,480.00	880		880
2003	2,360.00		2,360.00	802		802
2004	2,980.00		2,980.00	1,043		1,043
UT						
2002	2,300.00	1,100.00	1,540.00	322	264	586
2003	1,200.00	600.00	900.00	1,200	600	1,800
2004	1,450.00	480.00	996.00	1,233	360	1,593
WA						
2002	1,990.00	566.00	1,650.00	131,340	11,886	143,226
2003	1,640.00	531.00	1,430.00	157,440	11,678	169,118
2004	2,220.00	481.00	1,770.00	219,780	16,829	236,609
US						
2002	1,940.00	562.00	1,550.00	245,951	28,520	274,471
2003	1,700.00	631.00	1,410.00	299,209	42,904	342,113
2004	2,060.00	597.00	1,570.00	380,972	56,161	437,133

¹ Missing data not published to avoid disclosure of individual operations.

**Tart Cherries: Bearing Acreage, Yield, Production, and Utilization
by State and United States, 2002-2004 ¹**

State and Year	Bearing Acreage	Yield Per Acre ²	Production		Utilization	
			Total	Utilized	Fresh	Processed
	<i>Acres</i>	<i>Pounds</i>	<i>Million Pounds</i>	<i>Million Pounds</i>	<i>Million Pounds</i>	<i>Million Pounds</i>
CO						
2002			0.3	0.3		
2003			0.4	0.4		
2004			0.2	0.2		
MI						
2002	27,500	545	15.0	15.0	0.1	14.9
2003	27,000	5,700	154.0	154.0	0.5	153.5
2004	27,000	5,520	149.0	149.0	0.5	148.5
NY						
2002	2,000	6,350	12.7	12.7	0.1	12.6
2003	2,000	3,600	7.2	7.2		
2004	2,000	5,350	10.7	10.7		
OR						
2002	900	3,560	3.2	3.1		
2003	800	1,750	1.4	1.4		
2004	800	4,880	3.9	3.9		
PA						
2002	800	4,750	3.8	3.8		
2003	800	4,880	3.9	3.9		
2004	800	3,750	3.0	3.0		
UT						
2002	2,800	1,070	3.0	2.8		2.8
2003	2,800	9,290	26.0	26.0		26.0
2004	2,800	7,860	22.0	22.0		22.0
WA						
2002			20.5	20.5		
2003			20.1	20.1		
2004			17.5	17.5		
WI						
2002	2,000	2,000	4.0	4.0	0.2	3.8
2003	1,900	7,000	13.3	13.3	0.2	13.1
2004	1,900	3,530	6.7	6.7	0.1	6.6
US						
2002	37,700	1,660	62.5	62.2	0.8	61.4
2003	36,970	6,120	226.3	226.3	1.0	225.3
2004	36,950	5,760	213.0	213.0	1.3	211.7

¹ Missing data not published to avoid disclosure of individual operations.

² Yield is based on total production.

**Tart Cherries: Price and Value by State
and United States, 2002-2004 ¹**

State and Year	Price per Pound			Value of Production		
	Fresh	Processed	All	Fresh	Processed	All
	<i>Dollars</i>	<i>Dollars</i>	<i>Dollars</i>	<i>1,000 Dollars</i>	<i>1,000 Dollars</i>	<i>1,000 Dollars</i>
CO						
2002			0.400			120
2003			0.380			152
2004			0.210			42
MI						
2002	0.700	0.478	0.479	70	7,122	7,192
2003	0.750	0.375	0.376	375	57,563	57,938
2004	0.800	0.333	0.335	400	49,461	49,861
NY						
2002	1.200	0.500	0.506	120	6,300	6,420
2003			0.314			2,262
2004			0.409			4,381
OR						
2002			0.370			1,147
2003			0.361			505
2004			0.369			1,439
PA						
2002			0.558			2,121
2003			0.434			1,694
2004			0.353			1,060
UT						
2002		0.240	0.240		672	672
2003		0.228	0.228		5,928	5,928
2004		0.218	0.218		4,796	4,796
WA						
2002			0.398			8,159
2003			0.323			6,492
2004			0.309			5,409
WI						
2002	0.550	0.510	0.512	110	1,938	2,048
2003	0.550	0.392	0.394	110	5,129	5,239
2004	0.710	0.390	0.395	71	2,574	2,645
US						
2002	0.845	0.443	0.448	676	27,203	27,879
2003	0.744	0.353	0.354	744	79,466	80,210
2004	0.915	0.323	0.327	1,190	68,443	69,633

¹ Missing data not published to avoid disclosure of individual operations.

**Sweet and Tart Cherries: Processed Utilization, Use,
and Price by State and United States, 2002-2004**

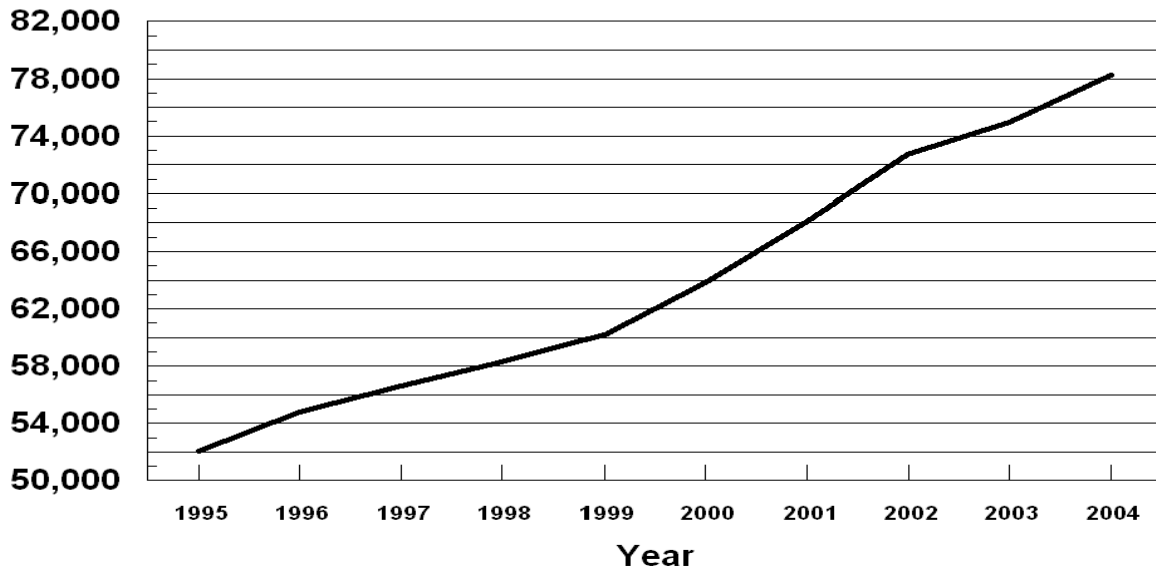
Crop, Use, and State	Processed Utilization					
	Quantity			Price per Unit		
	2002	2003	2004	2002	2003	2004
	<i>Tons</i>	<i>Tons</i>	<i>Tons</i>	<i>Dollars per Ton</i>	<i>Dollars per Ton</i>	<i>Dollars per Ton</i>
Sweet Cherries						
Canned						
MI	280	1,500	2,870	1,000.00	920.00	640.00
OR	2,000	2,000	2,000	1,100.00	1,100.00	1,100.00
WA	3,500	5,500	4,500	1,040.00	810.00	798.00
US	5,780	9,000	9,370	1,059.00	893.00	814.00
Brined						
MI	1,700	8,000	18,100	630.00	675.00	617.00
OR	12,000	14,000	14,000	650.00	770.00	740.00
WA	11,000	10,000	18,000	500.00	420.00	541.00
Oth Sts	7,440	10,050	10,630	399.00	534.00	686.00
US	32,140	42,050	60,730	540.00	612.00	635.00
Other ¹						
MI	420	3,000	3,230	864.00	967.00	711.00
OR	2,000	3,000	4,000	773.00	810.00	870.00
WA	6,500	6,500	12,500	423.00	465.00	280.00
Oth Sts	3,870	4,460	4,280	104.00	170.00	159.00
US	12,790	16,960	24,010	396.00	537.00	415.00
	<i>Million Pounds</i>	<i>Million Pounds</i>	<i>Million Pounds</i>	<i>Dollars per Pound</i>	<i>Dollars per Pound</i>	<i>Dollars per Pound</i>
Tart Cherries						
Canned						
MI	6.5	53.0	39.5	0.460	0.390	0.340
Oth Sts	10.9	7.9	7.1	0.518	0.376	0.351
US	17.4	60.9	46.6	0.497	0.388	0.342
Frozen						
MI	8.0	95.0	103.0	0.500	0.370	0.340
Oth Sts	20.9	53.7	47.1	0.482	0.308	0.306
US	28.9	148.7	150.1	0.487	0.348	0.329
Other ²						
MI	0.4	5.5	6.0	0.330	0.317	0.169
Oth Sts	14.7	10.2	9.0	0.297	0.234	0.228
US	15.1	15.7	15.0	0.298	0.263	0.205

¹ Includes California canned utilization, and other processed utilizations (frozen, juice, etc.) from all States.

² Juice, wine, brined, and dried.

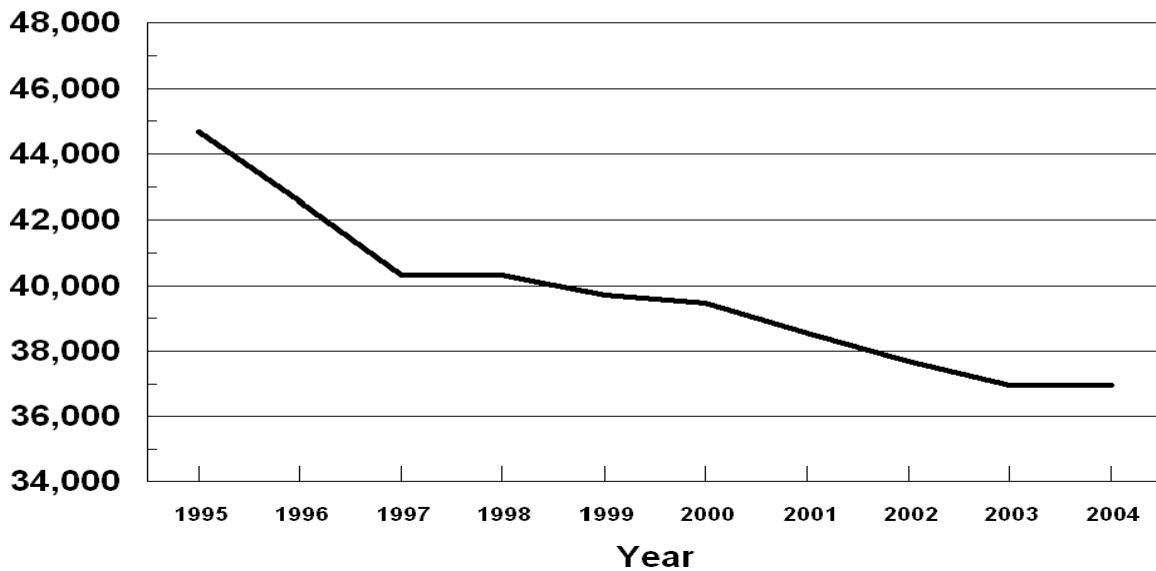
U. S. Sweet Cherries

Bearing Acres
1995 - 2004



U. S. Tart Cherries

Bearing Acres
1995 - 2004



**Cranberries: Area Harvested, Yield, Production and Utilization
by State and United States, 2002-2004**

Year and State	Area Harvested	Yield per Acre ¹	Production		Utilization	
			Total	Utilized	Fresh	Processed
	<i>Acres</i>	<i>Barrels</i> ²	<i>Barrels</i> ²	<i>Barrels</i> ²		
2002						
MA	14,500	100.1	1,452,000	1,452,000	154,000	1,298,000
NJ ³	3,100	138.7	430,000	430,000		430,000
OR	2,800	154.3	432,000	432,000	9,000	423,000
WA	1,700	98.2	167,000	160,000	30,000	130,000
WI	17,300	185.4	3,208,000	3,208,000	177,000	3,031,000
US	39,400	144.4	5,689,000	5,682,000	370,000	5,312,000
2003						
MA	14,400	97.6	1,406,000	1,406,000	107,000	1,299,000
NJ ³	3,200	150.0	480,000	480,000		480,000
OR	2,900	175.9	510,000	510,000	9,000	501,000
WA	1,700	111.8	190,000	190,000	30,000	160,000
WI	17,400	207.3	3,607,000	3,607,000	205,000	3,402,000
US	39,600	156.4	6,193,000	6,193,000	351,000	5,842,000
2004						
MA	14,100	128.2	1,808,000	1,808,000	152,000	1,656,000
NJ ³	3,100	129.7	402,000	394,000		394,000
OR	2,900	170.7	495,000	495,000	10,000	485,000
WA	1,700	100.0	170,000	170,000	30,000	140,000
WI	17,400	189.4	3,295,000	3,295,000	205,000	3,090,000
US	39,200	157.4	6,170,000	6,162,000	397,000	5,765,000

¹ Yield is based on total production.

² A barrel weighs 100 pounds.

³ Small quantities of fresh cranberries are included in processed to avoid disclosure of individual operations.

**Cranberries: Utilization, Price, and Value
by State and United States, 2002-2004**

Year and State	Price per Barrel ^{1 2}			Value of Utilized Production		
	Fresh	Processed	All	Fresh	Processed	All
	<i>Dollars</i>	<i>Dollars</i>	<i>Dollars</i>	<i>1,000 Dollars</i>	<i>1,000 Dollars</i>	<i>1,000 Dollars</i>
2002						
MA	50.30	30.70	32.80	7,746	39,849	47,595
NJ ³		31.90	31.90		13,717	13,717
OR	48.30	32.30	32.60	435	13,663	14,098
WA	53.70	31.90	36.00	1,611	4,147	5,758
WI	51.80	30.50	31.70	9,169	92,446	101,615
US	51.20	30.80	32.20	18,961	163,822	182,783
2003						
MA	56.30	32.30	34.10	6,024	41,958	47,982
NJ ³		31.90	31.90		15,312	15,312
OR	55.80	33.70	34.10	502	16,884	17,386
WA	52.90	31.90	35.20	1,587	5,104	6,691
WI	51.40	32.90	34.00	10,537	111,926	122,463
US	53.10	32.70	33.90	18,650	191,184	209,834
2004						
MA	56.30	32.50	34.50	8,558	53,820	62,378
NJ ³		34.30	34.30		13,514	13,514
OR	55.30	34.70	35.10	553	16,830	17,383
WA	58.40	34.40	38.60	1,752	4,816	6,568
WI	56.90	33.20	34.70	11,665	102,588	114,253
US	56.70	33.20	34.70	22,528	191,568	214,096

¹ Weighted average of co-op and independent sales. Co-op prices represent pool proceeds less returns for processing non-cranberry products, capital stock dividends, capital stock retains, and other retains.

² A barrel weighs 100 pounds.

³ Small quantities of fresh cranberries are included in processed to avoid disclosure of individual operations.

**Grapes: Bearing Acreage and Yield by Type,
State, and United States, 2002-2004**

State and Type	Bearing Acreage			Yield per Acre ¹		
	2002	2003	2004	2002	2003	2004
	<i>Acres</i>	<i>Acres</i>	<i>Acres</i>	<i>Tons</i>	<i>Tons</i>	<i>Tons</i>
AZ	2,400	2,100	1,000	3.50	3.81	4.00
AR	1,200	1,100	900	4.00	2.18	3.33
CA						
All Types	820,000	819,000	800,000	8.17	7.16	7.02
Wine	486,000	479,000	473,000	6.48	6.07	5.95
Table	88,000	85,000	83,000	8.44	8.61	9.28
Raisin ²	246,000	255,000	244,000	11.40	8.71	8.32
GA	1,100	1,100	1,100	2.55	2.82	3.00
MI	12,300	13,200	13,900	3.47	7.16	4.50
MO	900	960	1,000	3.67	3.16	3.30
NY	31,000	31,000	31,000	5.03	6.39	4.58
NC	850	950	1,100	2.71	2.95	3.18
OH	2,000	2,100	2,100	2.90	3.86	2.29
OR	9,400	10,700	11,100	2.34	2.24	2.16
PA	12,000	12,000	12,000	4.43	7.08	7.23
TX	2,900	2,900	2,900	1.62	2.07	3.03
VA	1,900	1,900	1,900	2.58	1.89	1.95
WA						
All Types	52,000	52,000	53,000	6.38	6.62	5.04
Wine	27,000	27,000	27,000	4.26	4.15	3.96
Juice	25,000	25,000	26,000	8.68	9.28	6.15
US	949,950	951,010	933,000	7.73	6.99	6.68

¹ Yield is based on total production.

² The Raisin Industry Diversion program (RID) was implemented for the 2002 crop. Acres enrolled were 27,000 for 2002. These acres were deducted from bearing acres. No RID program was implemented for 2003 or 2004.

**Grapes: Total and Utilized Production, Price, and Value
by Type, State, and United States, 2002-2004**

State and Type	Total Production			Utilized Production		
	2002	2003	2004	2002	2003	2004
	<i>Tons</i>	<i>Tons</i>	<i>Tons</i>	<i>Tons</i>	<i>Tons</i>	<i>Tons</i>
AZ	8,400	8,000	4,000	8,400	8,000	4,000
AR	4,800	2,400	3,000	4,650	2,300	2,700
CA						
All Types	6,696,000	5,861,000	5,615,000	6,696,000	5,786,000	5,615,000
Wine	3,149,000	2,909,000	2,815,000	3,149,000	2,909,000	2,815,000
Table ¹	743,000	732,000	770,000	743,000	678,000	770,000
Raisin ¹	2,804,000	2,220,000	2,030,000	2,804,000	2,199,000	2,030,000
GA	2,800	3,100	3,300	2,760	2,800	3,200
MI	42,700	94,500	62,500	42,500	80,500	58,000
MO	3,300	3,030	3,300	3,300	3,030	3,300
NY	156,000	198,000	142,000	155,000	152,000	142,000
NC	2,300	2,800	3,500	2,300	2,800	3,500
OH	5,800	8,100	4,800	5,800	7,000	4,800
OR	22,000	24,000	24,000	22,000	24,000	19,400
PA	53,200	85,000	86,800	53,200	68,000	86,800
TX	4,700	6,000	8,800	4,400	5,800	8,500
VA	4,900	3,600	3,700	4,500	3,400	3,400
WA						
All Types	332,000	344,000	267,000	332,000	344,000	267,000
Wine	115,000	112,000	107,000	115,000	112,000	107,000
Juice	217,000	232,000	160,000	217,000	232,000	160,000
US	7,338,900	6,643,530	6,231,700	7,336,810	6,489,630	6,221,600
	Price per Ton			Value of Utilized Production		
	2002	2003	2004	2002	2003	2004
	<i>Dollars</i>	<i>Dollars</i>	<i>Dollars</i>	<i>1,000 Dollars</i>	<i>1,000 Dollars</i>	<i>1,000 Dollars</i>
AZ	947.00	1,030.00	334.00	7,953	8,204	1,335
AR	462.00	485.00	502.00	2,147	1,115	1,355
CA						
All Types	383.00	402.00	491.00	2,566,918	2,324,650	2,756,535
Wine	535.00	530.00	570.00	1,683,452	1,542,876	1,604,925
Table ¹	616.00	601.00	695.00	457,628	407,607	535,183
Raisin ¹	152.00	170.00	304.00	425,838	374,167	616,427
GA	1,060.00	978.00	1,160.00	2,936	2,738	3,724
MI	347.00	308.00	323.00	14,760	24,830	18,740
MO	613.00	610.00	719.00	2,023	1,849	2,374
NY	303.00	236.00	212.00	46,950	35,815	30,064
NC	1,280.00	1,070.00	962.00	2,934	2,989	3,366
OH	398.00	384.00	460.00	2,309	2,685	2,208
OR	1,470.00	1,510.00	1,660.00	32,340	36,240	32,204
PA	294.00	241.00	251.00	15,615	16,419	21,818
TX	910.00	900.00	919.00	4,004	5,220	7,812
VA	1,350.00	1,300.00	1,300.00	6,075	4,420	4,420
WA						
All Types	405.00	435.00	477.00	134,605	149,672	127,455
Wine	878.00	920.00	925.00	100,970	103,040	98,975
Juice	155.00	201.00	178.00	33,635	46,632	28,480
US	387.00	403.00	484.00	2,841,569	2,616,846	3,013,410

¹ Fresh equivalent of dried and not dried.

**Grapes: Fresh and Processed Utilization, and Price
by Type, State and United States, 2002-2004**

Utilization, State, and Type	Fresh and Processed Utilization					
	Quantity			Price per Ton		
	2002	2003	2004	2002	2003	2004
	<i>Tons</i>	<i>Tons</i>	<i>Tons</i>	<i>Dollars</i>	<i>Dollars</i>	<i>Dollars</i>
Fresh						
CA						
All Types	971,000	792,000	876,000	681.00	683.00	764.00
Wine	45,000	45,000	40,000	300.00	300.00	510.00
Table	662,000	575,000	644,000	680.00	690.00	790.00
Raisin	264,000	172,000	192,000	750.00	760.00	730.00
MI	300	500	500	800.00	800.00	800.00
MO	240	60	80	780.00	620.00	710.00
NY	2,000	3,000	2,000	860.00	714.00	678.00
NC	300	300	200	1,780.00	1,630.00	1,650.00
OH	100	100	100	940.00	580.00	1,040.00
PA	1,000	1,000	500	790.00	744.00	650.00
Oth Sts	7,400	8,500	3,200	1,160.00	1,190.00	1,080.00
US	982,340	805,460	882,580	686.00	689.00	765.00
Processed						
CA						
All Types	5,725,000	4,994,000	4,739,000	333.00	357.00	440.00
Wine	3,104,000	2,864,000	2,775,000	538.00	534.00	571.00
Table	81,000	103,000	126,000	92.20	105.00	210.00
Raisin	2,540,000	2,027,000	1,838,000	89.70	120.00	259.00
MI	42,200	80,000	57,500	344.00	305.00	319.00
MO	3,060	2,970	3,220	600.00	610.00	720.00
NY	153,000	149,000	140,000	296.00	226.00	205.00
NC	2,000	2,500	3,300	1,200.00	1,000.00	920.00
OH	5,700	6,900	4,700	389.00	381.00	448.00
OR ¹	22,000	24,000	19,400	1,470.00	1,510.00	1,660.00
PA	52,200	67,000	86,300	284.00	234.00	249.00
TX ¹	4,400	5,800	8,500	910.00	900.00	919.00
VA	4,500	3,400	3,400	1,350.00	1,300.00	1,300.00
WA						
All Types	332,000	344,000	267,000	405.00	435.00	477.00
Wine	115,000	112,000	107,000	878.00	920.00	925.00
Juice	217,000	232,000	160,000	155.00	201.00	178.00
Oth Sts	8,410	4,600	6,700	530.00	419.00	441.00
US	6,354,470	5,684,170	5,339,020	341.00	363.00	438.00

¹ Includes small quantities sold fresh.

**Grapes: Fresh and Processed Value by Type,
State and United States, 2002-2004**

Utilization, State, and Type	Fresh and Processed Utilization		
	Value of Utilized Production		
	2002	2003	2004
	<i>1,000 Dollars</i>	<i>1,000 Dollars</i>	<i>1,000 Dollars</i>
Fresh			
CA			
All Types	661,660	540,970	669,320
Wine	13,500	13,500	20,400
Table	450,160	396,750	508,760
Raisin	198,000	130,720	140,160
MI	240	400	400
MO	187	37	57
NY	1,720	2,142	1,356
NC	534	489	330
OH	94	58	104
PA	790	744	325
Oth Sts	8,575	10,128	3,456
US	673,800	554,968	675,348
Processed			
CA			
All Types	1,905,258	1,783,680	2,087,215
Wine	1,669,952	1,529,376	1,584,525
Table	7,468	10,857	26,423
Raisin	227,838	243,447	476,267
MI	14,520	24,430	18,340
MO	1,836	1,812	2,317
NY	45,230	33,673	28,708
NC	2,400	2,500	3,036
OH	2,215	2,627	2,104
OR ¹	32,340	36,240	32,204
PA	14,825	15,675	21,493
TX ¹	4,004	5,220	7,812
VA	6,075	4,420	4,420
WA			
All Types	134,605	149,672	127,455
Wine	100,970	103,040	98,975
Juice	33,635	46,632	28,480
Oth Sts	4,461	1,929	2,958
US	2,167,769	2,061,878	2,338,062

¹ Includes small quantities sold fresh.

**Grapes: Processed Utilization, Use, and Price
by Type, State and United States, 2002-2004**

Use and State	Processed Utilization					
	Quantity			Price per Ton		
	2002	2003	2004	2002	2003	2004
	<i>Tons</i>	<i>Tons</i>	<i>Tons</i>	<i>Dollars</i>	<i>Dollars</i>	<i>Dollars</i>
Canned						
CA						
Raisin	31,000	27,000	25,000	270.00	280.00	300.00
US	31,000	27,000	25,000	270.00	280.00	300.00
Juice ^{1 2}						
MI	39,200	78,000	54,300	300.00	290.00	285.00
NY	109,000	106,000	103,000	266.00	198.00	167.00
OH	4,500	5,400	3,200	302.00	296.00	263.00
PA	45,900	56,500	73,000	284.00	228.00	221.00
WA	217,000	232,000	160,000	155.00	201.00	178.00
Oth Sts	1,900	850	3,720	287.00	319.00	290.00
US	417,500	478,750	397,220	214.00	219.00	199.00
Wine						
CA						
All Types	3,787,000	3,370,000	3,615,000	455.00	468.00	485.00
Wine	3,104,000	2,864,000	2,775,000	538.00	534.00	571.00
Table	61,000	84,000	113,000	80.50	91.40	199.00
Raisin	622,000	422,000	727,000	75.50	95.10	200.00
MI	3,000	2,000	3,200	920.00	905.00	895.00
MO	2,860	2,920	3,200	600.00	610.00	720.00
NY	44,000	43,000	37,000	369.00	295.00	311.00
NC	2,000	2,500	3,300	1,200.00	1,000.00	920.00
OH	1,200	1,500	1,500	713.00	686.00	841.00
OR ²	22,000	24,000	19,400	1,470.00	1,510.00	1,660.00
PA	6,300	10,500	13,300	288.00	266.00	403.00
TX ²	4,400	5,800	8,500	910.00	900.00	919.00
VA	4,500	3,400	3,400	1,350.00	1,300.00	1,300.00
WA	115,000	112,000	107,000	878.00	920.00	925.00
Oth Sts ³	6,710	3,800	3,000	601.00	444.00	631.00
US	3,998,970	3,581,420	3,817,800	474.00	489.00	504.00
Dried (Fr Basis)						
CA						
All Types	1,907,000	1,597,000	1,099,000	91.80	125.00	298.00
Table	20,000	19,000	13,000	128.00	167.00	303.00
Raisin	1,887,000	1,578,000	1,086,000	91.40	124.00	298.00
US	1,907,000	1,597,000	1,099,000	91.80	125.00	298.00

¹ Includes small quantities of other processed (jam, jelly, etc.).

² Includes small quantities for other uses.

³ AZ grapes dried for raisins in 2002 and 2003 are included to avoid disclosure of individual operations. No AZ grapes dried for raisins in 2004.

**Concord Grapes: Processed Utilization by State
and United States, 2002-2004**

State	Processed Utilization		
	2002	2003	2004
	<i>Tons</i>	<i>Tons</i>	<i>Tons</i>
MI	25,300	51,000	34,900
NY	108,000	104,000	99,300
OH	4,000	5,100	3,000
PA	44,800	55,800	78,000
WA	199,000	212,000	140,000
Oth Sts	1,300	900	920
US	382,400	428,800	356,120

**Niagara Grapes: Processed Utilization by State
and United States, 2002-2004**

State	Processed Utilization		
	2002	2003	2004
	<i>Tons</i>	<i>Tons</i>	<i>Tons</i>
MI	13,900	27,000	19,400
NY	19,000	18,000	19,800
OH	500	500	450
PA	4,200	6,200	3,600
WA	18,000	20,000	20,000
US	55,600	71,700	63,250

**Peaches: Bearing Acreage and Yield by Type,
State, and United States, 2002-2004**

State	Bearing Acreage			Yield per Acre ¹		
	2002	2003	2004	2002	2003	2004
	<i>Acres</i>	<i>Acres</i>	<i>Acres</i>	<i>Tons</i>	<i>Tons</i>	<i>Tons</i>
AL	3,000	3,000	3,000	3.75	1.50	4.67
AR	1,700	1,600	1,400	1.80	2.78	3.21
CA						
Freestone	37,000	37,000	37,000	10.80	11.20	11.80
CO	1,900	1,900	2,000	5.00	5.53	6.50
CT	400	400	400	1.63	1.88	2.13
GA	12,000	12,000	12,000	3.75	4.58	4.38
ID	820	820	920	7.95	7.93	9.78
IL	1,600	1,600	1,600	5.40	6.41	6.63
IN	650	650	650	2.39	2.62	1.85
KY	300	280	270	2.00	3.21	2.96
LA	300	290	280	2.50	2.76	3.04
MD	1,000	1,100	1,100	3.50	3.86	3.73
MA	370	380	380	3.11	3.95	2.53
MI	5,000	5,000	5,200	1.40	4.70	3.60
MO	1,800	1,600	1,600	2.22	3.13	2.81
NJ	8,000	8,000	7,600	3.88	4.38	4.28
NY	1,700	1,700	1,700	2.94	3.82	3.53
NC	1,200	1,200	1,200	4.17	2.50	2.92
OH	1,200	1,300	1,300	3.92	4.35	3.92
OK	850	850	840	2.36	1.76	2.38
OR	800	800	800	4.94	2.81	4.13
PA	4,500	4,500	4,500	6.65	8.11	5.11
SC	16,000	15,000	14,500	5.00	3.33	4.83
TN	500	500	500	4.00	3.50	3.90
TX	6,200	6,500	7,000	0.97	0.54	1.74
UT	1,300	1,300	1,300	2.50	3.46	3.85
VA	1,260	1,260	1,260	2.78	3.97	3.57
WA	2,900	2,900	2,900	7.95	6.72	7.41
WV	1,100	1,100	970	4.55	5.68	6.19
Total Above	115,350	114,530	114,170	6.10	6.32	6.73
CA						
Clingstone	31,000	31,000	32,000	18.20	17.30	16.80
US	146,350	145,530	146,170	8.66	8.65	8.94

¹ Yield is based on total production.

**Peaches: Bearing Acreage and Yield by Type,
California, 2002-2004**

Type	Bearing Acreage			Yield per Acre ¹		
	2002	2003	2004	2002	2003	2004
	<i>Acres</i>	<i>Acres</i>	<i>Acres</i>	<i>Tons</i>	<i>Tons</i>	<i>Tons</i>
Freestone	37,000	37,000	37,000	10.80	11.20	11.80
Clingstone	31,000	31,000	32,000	18.20	17.30	16.80
Total	68,000	68,000	69,000	14.10	14.00	14.10

¹ Yield is based on total production.

**Peaches: Total and Utilized Production, by Type,
State, and United States, 2002-2004**

State	Total Production			Utilized Production		
	2002	2003	2004	2002	2003	2004
	<i>Tons</i>	<i>Tons</i>	<i>Tons</i>	<i>Tons</i>	<i>Tons</i>	<i>Tons</i>
AL	11,250	4,500	14,000	10,150	3,850	10,000
AR	3,050	4,450	4,500	2,400	4,000	3,700
CA						
Freestone	398,000	413,000	436,000	398,000	413,000	390,000
CO	9,500	10,500	13,000	9,250	10,000	12,000
CT	650	750	850	650	750	850
GA	45,000	55,000	52,500	42,000	53,000	49,500
ID	6,500	6,500	9,000	6,500	6,300	8,500
IL	8,600	10,250	10,600	8,250	9,900	9,500
IN	1,550	1,700	1,200	1,500	1,650	1,200
KY	600	900	800	600	900	750
LA	750	800	850	700	750	800
MD	3,500	4,250	4,100	3,500	4,250	4,100
MA	1,150	1,500	960	1,100	1,350	950
MI	7,000	23,500	18,700	7,000	21,500	18,700
MO	4,000	5,000	4,500	4,000	5,000	4,500
NJ	31,000	35,000	32,500	28,500	31,000	30,500
NY	5,000	6,500	6,000	5,000	6,000	5,900
NC	5,000	3,000	3,500	5,000	3,000	3,500
OH	4,700	5,650	5,100	4,550	5,500	5,000
OK	2,000	1,500	2,000	1,700	1,400	2,000
OR	3,950	2,250	3,300	3,700	1,750	3,200
PA	30,000	36,500	23,000	29,500	35,500	22,700
SC	80,000	50,000	70,000	65,000	40,000	55,000
TN	2,000	1,750	1,950	1,850	1,600	1,800
TX	6,000	3,500	12,200	5,700	3,350	9,900
UT	3,250	4,500	5,000	3,250	4,350	4,550
VA	3,500	5,000	4,500	3,350	4,600	4,400
WA	23,000	19,500	21,500	23,000	19,500	21,500
WV	5,000	6,250	6,000	5,000	5,900	5,800
Total Above	705,500	723,500	768,110	680,700	699,650	690,800
CA						
Clingstone	562,000	536,000	539,000	537,000	505,500	539,000
US	1,267,500	1,259,500	1,307,110	1,217,700	1,205,150	1,229,800

**Peaches: Total and Utilized Production, by Type,
California, 2002-2004**

Type	Total Production			Utilized Production		
	2002	2003	2004	2002	2003	2004
	<i>Tons</i>	<i>Tons</i>	<i>Tons</i>	<i>Tons</i>	<i>Tons</i>	<i>Tons</i>
Freestone	398,000	413,000	436,000	398,000	413,000	390,000
Clingstone	562,000	536,000	539,000	537,000	505,500	539,000
Total	960,000	949,000	975,000	935,000	918,500	929,000

**Peaches: Price and Value by Type, State,
and United States, 2002-2004**

State	Price per Ton			Value of Utilized Production		
	2002	2003	2004	2002	2003	2004
	<i>Dollars</i>	<i>Dollars</i>	<i>Dollars</i>	<i>1,000 Dollars</i>	<i>1,000 Dollars</i>	<i>1,000 Dollars</i>
AL	880.00	940.00	661.00	8,932	3,619	6,610
AR	858.00	942.00	842.00	2,058	3,769	3,117
CA						
Freestone	348.00	336.00	281.00	138,369	138,746	109,760
CO	1,130.00	1,220.00	944.00	10,490	12,160	11,328
CT	1,400.00	1,400.00	1,600.00	910	1,050	1,360
GA	766.00	559.00	667.00	32,148	29,642	33,017
ID	854.00	713.00	752.00	5,546	4,491	6,388
IL	940.00	1,020.00	770.00	7,755	10,138	7,315
IN	1,470.00	1,430.00	1,380.00	2,199	2,363	1,656
KY	1,090.00	1,110.00	1,290.00	654	1,003	968
LA	1,500.00	1,630.00	1,420.00	1,051	1,223	1,136
MD	784.00	947.00	558.00	2,741	4,024	2,289
MA	1,600.00	1,600.00	1,500.00	1,760	2,160	1,425
MI	636.00	362.00	549.00	4,452	7,790	10,274
MO	840.00	860.00	780.00	3,360	4,300	3,510
NJ	884.00	780.00	760.00	25,194	24,180	23,180
NY	475.00	703.00	717.00	2,375	4,218	4,232
NC	700.00	800.00	840.00	3,500	2,400	2,940
OH	992.00	996.00	1,000.00	4,514	5,478	5,005
OK	1,150.00	1,240.00	1,030.00	1,962	1,730	2,060
OR	818.00	1,120.00	867.00	3,028	1,957	2,774
PA	670.00	659.00	710.00	19,792	23,397	16,114
SC	657.00	723.00	557.00	42,705	28,925	30,623
TN	940.00	1,030.00	1,070.00	1,739	1,645	1,926
TX	1,200.00	1,460.00	1,520.00	6,840	4,891	15,097
UT	624.00	789.00	627.00	2,031	3,431	2,853
VA	820.00	756.00	660.00	2,747	3,478	2,904
WA	584.00	473.00	349.00	13,420	9,228	7,502
WV	620.00	740.00	478.00	3,100	4,366	2,772
Total Above	522.00	494.00	463.00	355,372	345,802	320,135
CA						
Clingstone	247.00	215.00	263.00	132,639	108,484	141,494
US	400.00	377.00	375.00	488,011	454,286	461,629

**Peaches: Price and Value by Type,
California, 2002-2004**

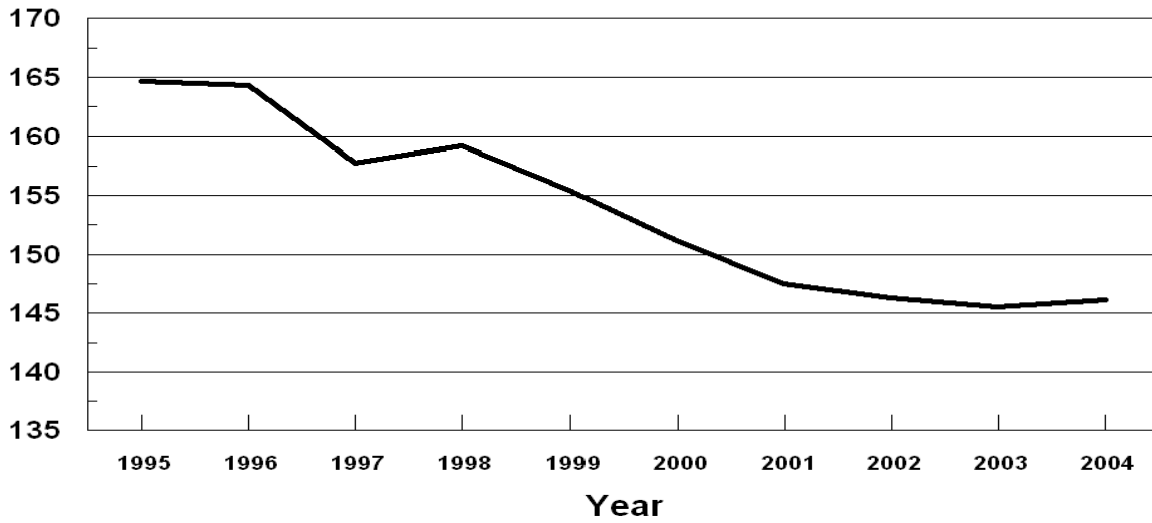
Type	Price per Ton			Value of Utilized Production		
	2002	2003	2004	2002	2003	2004
	<i>Dollars</i>	<i>Dollars</i>	<i>Dollars</i>	<i>1,000 Dollars</i>	<i>1,000 Dollars</i>	<i>1,000 Dollars</i>
Freestone	348.00	336.00	281.00	138,369	138,746	109,760
Clingstone	247.00	215.00	263.00	132,639	108,484	141,494
Total	290.00	269.00	270.00	271,008	247,230	251,254

U. S. Peaches

Bearing Acres

1995 - 2004

(000) Acres

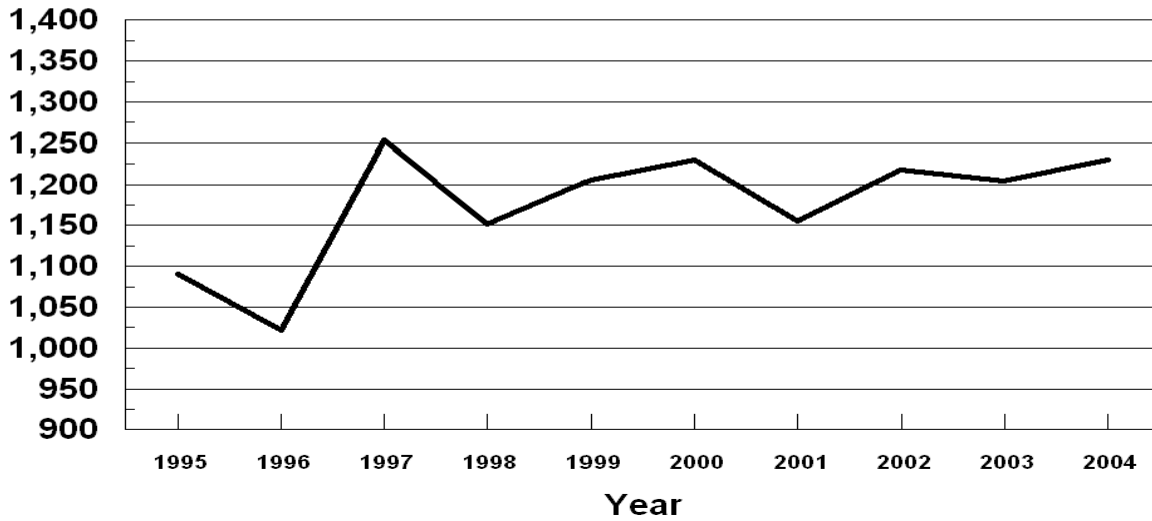


U. S. Peaches

Utilized Production

1995 - 2004

Tons



**Peaches: Fresh and Processed Utilization, and Price
by Type, State and United States, 2002-2004**

Use and State	Fresh and Processed Utilization					
	Quantity			Price per Ton		
	2002	2003	2004	2002	2003	2004
	<i>Tons</i>	<i>Tons</i>	<i>Tons</i>	<i>Dollars</i>	<i>Dollars</i>	<i>Dollars</i>
Fresh						
AL	10,150	3,850	10,000	880.00	940.00	661.00
CA						
Freestone	277,850	282,300	259,000	418.00	406.00	341.00
CT	650	750	850	1,400.00	1,400.00	1,600.00
IL	8,250	9,900	9,500	940.00	1,020.00	770.00
IN	1,500	1,650	1,200	1,470.00	1,430.00	1,380.00
KY	600	900	750	1,090.00	1,110.00	1,290.00
LA	700	750	800	1,500.00	1,630.00	1,420.00
MD	3,450	4,200	4,050	792.00	956.00	563.00
MA	1,100	1,350	950	1,600.00	1,600.00	1,500.00
MI	5,300	12,500	12,500	740.00	400.00	660.00
MO	4,000	5,000	4,500	840.00	860.00	780.00
NY	3,750	4,250	3,600	520.00	840.00	920.00
OH	4,550	5,500	5,000	992.00	996.00	1,000.00
OK	1,700	1,400	2,000	1,150.00	1,240.00	1,030.00
SC	57,500	35,000	52,500	714.00	790.00	573.00
TN	1,850	1,600	1,800	940.00	1,030.00	1,070.00
TX	5,700	3,350	9,800	1,200.00	1,460.00	1,540.00
VA	3,350	4,600	4,400	820.00	756.00	660.00
WV	5,000	5,900	5,800	620.00	740.00	478.00
Oth Sts	140,300	158,000	146,600	825.00	716.00	733.00
US	537,250	542,750	535,600	612.00	581.00	548.00
Processed						
CA						
Clingstone	537,000	505,500	539,000	247.00	215.00	263.00
Freestone ¹	120,150	130,700	131,000	203.00	185.00	164.00
MI	1,700	9,000	6,200	312.00	310.00	326.00
NY	1,250	1,750	2,300	340.00	370.00	400.00
SC	7,500	5,000	2,500	220.00	255.00	216.00
Oth Sts	12,850	10,450	13,200	118.00	144.00	128.00
US ²	680,450	662,400	694,200	234.00	210.00	242.00

¹ CA Freestone quantity and value include dried, price excludes dried.

² US quantity, price, and value include dried.

**Peaches: Fresh and Processed Value by State
and United States, 2002-2004**

Use and State	Fresh and Processed Utilization		
	Value of Utilized Production		
	2002	2003	2004
	<i>1,000 Dollars</i>	<i>1,000 Dollars</i>	<i>1,000 Dollars</i>
Fresh			
AL	8,932	3,619	6,610
CA			
Freestone	116,141	114,614	88,319
CT	910	1,050	1,360
IL	7,755	10,138	7,315
IN	2,199	2,363	1,656
KY	654	1,003	968
LA	1,051	1,223	1,136
MD	2,732	4,015	2,280
MA	1,760	2,160	1,425
MI	3,922	5,000	8,250
MO	3,360	4,300	3,510
NY	1,950	3,570	3,312
OH	4,514	5,478	5,005
OK	1,962	1,730	2,060
SC	41,055	27,650	30,083
TN	1,739	1,645	1,926
TX	6,840	4,891	15,092
VA	2,747	3,478	2,904
WV	3,100	4,366	2,772
Oth Sts	115,697	113,162	107,538
US	329,020	315,455	293,521
Processed			
CA			
Clingstone	132,639	108,484	141,494
Freestone ¹	22,228	24,132	21,441
MI	530	2,790	2,024
NY	425	648	920
SC	1,650	1,275	540
Oth Sts	1,519	1,502	1,689
US ²	158,991	138,831	168,108

¹ CA Freestone quantity and value include dried, price excludes dried.

² US quantity, price, and value include dried.

**Peaches: Processed Utilization, and Price by Use,
State, and United States, 2002-2004 ¹**

Use and State	Processed Utilization					
	Quantity			Price per Ton		
	2002	2003	2004	2002	2003	2004
	<i>Tons</i>	<i>Tons</i>	<i>Tons</i>	<i>Dollars</i>	<i>Dollars</i>	<i>Dollars</i>
Canned						
CA						
Clingstone	511,500	478,500	505,000	244.00	217.00	270.00
NY						
Freestone	1,250	1,750	1,750	340.00	370.00	420.00
Oth Sts	17,750	18,250	17,190	221.00	234.00	234.00
US	530,500	498,500	523,940	243.00	218.00	269.00
Frozen						
CA						
Freestone	91,100	95,950	86,600	205.00	211.00	211.00
NY						
Freestone			550			336.00
Oth Sts	11,050	15,500	18,600	288.00	310.00	338.00
US	102,150	111,450	105,750	214.00	225.00	215.00
Dried						
CA						
Freestone	14,200	10,150	10,400	49.00	47.00	32.00
US	14,200	10,150	10,400	49.00	47.00	32.00
Other ¹						
Oth Sts	33,600	42,300	54,110	221.00	107.00	48.00
US	33,600	42,300	54,110	221.00	107.00	48.00

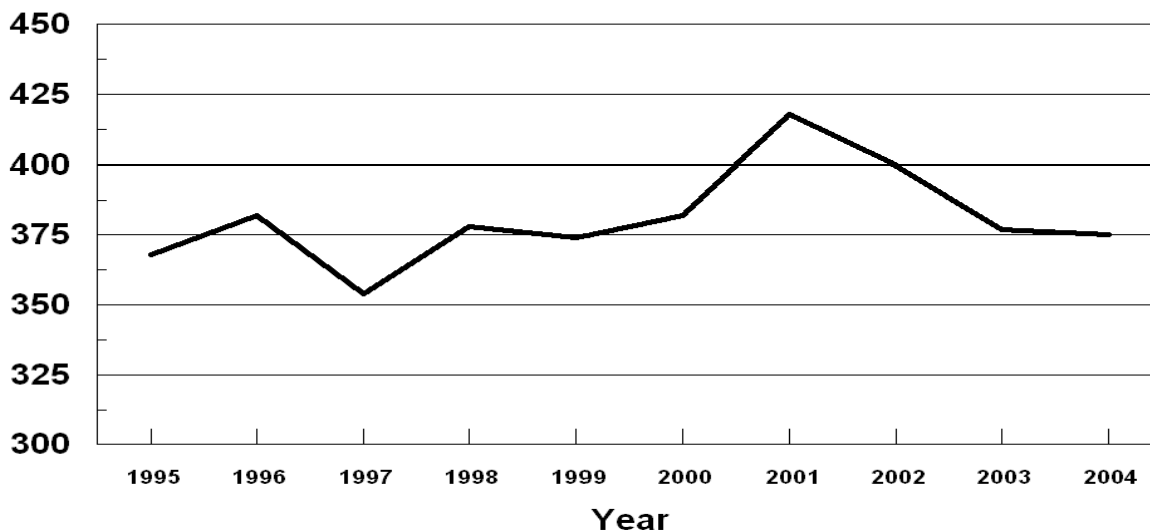
¹ Pickled, wine, brandy, juice, and baby food.

U.S. Peaches

Prices Received

1995 - 2004

Dollars Per Ton

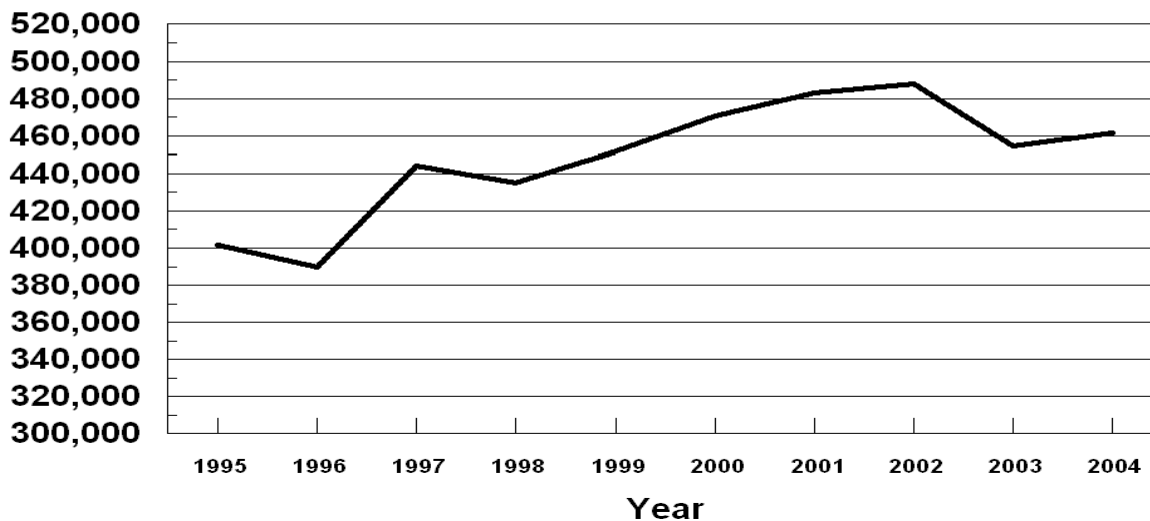


U.S. Peaches

Value of Utilized Production

1995 - 2004

(000) Dollars



**All Pears: Bearing Acreage, Yield, Production, and Utilization
by State and United States, 2002-2004 ¹**

State and Year	Bearing Acreage	Yield Per Acre ²	Production		Utilization	
			Total	Utilized	Fresh	Processed
	<i>Acres</i>	<i>Tons</i>	<i>Tons</i>	<i>Tons</i>	<i>Tons</i>	<i>Tons</i>
CA						
2002	17,800	15.90	283,600	283,600		
2003	17,300	15.70	272,000	272,000		
2004	17,000	15.90	271,000	271,000		
CO						
2002			2,400	2,400		
2003			2,800	2,800		
2004			2,600	2,500		
CT						
2002			500	500		
2003			1,300	1,270		
2004			900	900		
MI						
2002	850	1.65	1,400	1,400		
2003	800	6.00	4,800	4,300		
2004	850	4.07	3,460	3,400		
NY						
2002	1,500	6.67	10,000	9,850		
2003	1,400	11.10	15,500	14,800		
2004	1,400	11.80	16,500	13,900		
OR						
2002	17,600	11.30	199,000	198,000		
2003	17,600	11.90	210,000	206,000		
2004	17,400	12.20	212,000	210,000		
PA						
2002	900	4.22	3,800	3,500		
2003	900	5.78	5,200	4,900		
2004	900	5.00	4,500	4,400		
UT						
2002	130	2.46	320	320		
2003	130	3.46	450	380		
2004	130	2.31	300	300		
WA						
2002	24,800	15.70	389,000	389,000		
2003	25,500	16.50	422,000	422,000		
2004	26,300	14.40	379,000	379,000		
US ³						
2002	64,115	13.90	890,020	888,570	524,440	364,130
2003	64,150	14.60	934,050	928,450	559,950	368,500
2004	64,500	13.80	890,260	885,400	526,270	359,130

¹ Missing data not published to avoid disclosure of individual operations.

² Yield is based on total production.

³ Processed mostly canned, but includes small quantities dried and other uses not published separately to avoid disclosure of individual operations.

**All Pears: Price and Value by State
and United States, 2002-2004 ¹**

State and Year	Price per Ton			Value of Production		
	Fresh	Processed Exc. Dried	All	Fresh	Processed Inc. Dried	All
	<i>Dollars</i>	<i>Dollars</i>	<i>Dollars</i>	<i>1,000 Dollars</i>	<i>1,000 Dollars</i>	<i>1,000 Dollars</i>
CA						
2002			272.00			77,018
2003			233.00			63,376
2004			297.00			80,432
CO						
2002			576.00			1,383
2003			600.00			1,679
2004			561.00			1,403
CT						
2002			858.00			429
2003			1,000.00			1,270
2004			800.00			720
MI						
2002			318.00			445
2003			259.00			1,112
2004			311.00			1,058
NY						
2002			374.00			3,682
2003			373.00			5,513
2004			386.00			5,370
OR						
2002			318.00			63,053
2003			327.00			67,328
2004			365.00			76,703
PA						
2002			480.00			1,681
2003			697.00			3,414
2004			564.00			2,482
UT						
2002			644.00			206
2003			784.00			298
2004			393.00			118
WA						
2002			299.00			116,437
2003			306.00			129,152
2004			351.00			132,902
US ²						
2002	361.00	206.00	297.00	189,273	75,061	264,334
2003	358.00	197.00	294.00	200,642	72,500	273,142
2004	436.00	201.00	340.00	229,242	71,946	301,188

¹ Missing data not published to avoid disclosure of individual operations.

² Processed mostly canned, but includes small quantities dried and other uses not published separately to avoid disclosure of individual operations.

**Pears: Bearing Acreage, Yield, Production, and Utilization
by Type, State, and United States, 2002-2004 ¹**

Type, State and Year	Bearing Acreage	Yield Per Acre ²	Production		Utilization	
			Total	Utilized	Fresh	Processed
	<i>Acres</i>	<i>Tons</i>	<i>Tons</i>	<i>Tons</i>	<i>Tons</i>	<i>Tons</i>
Bartlett ³						
CA						
2002	13,500	17.20	232,000	232,000	69,000	163,000
2003	13,000	16.70	217,000	217,000	62,000	155,000
2004	13,000	17.20	223,000	223,000	68,000	155,000
OR						
2002	4,600	12.60	58,000	58,000	23,000	35,000
2003	4,600	11.70	54,000	54,000	27,000	27,000
2004	4,400	14.30	63,000	61,000	28,000	33,000
WA						
2002	11,300	14.00	158,000	158,000	44,000	114,000
2003	11,500	16.10	185,000	185,000	59,000	126,000
2004	11,800	14.50	171,000	171,000	51,000	120,000
Total						
2002	29,400	15.20	448,000	448,000	136,000	312,000
2003	29,100	15.70	456,000	456,000	148,000	308,000
2004	29,200	15.70	457,000	455,000	147,000	308,000
Other ⁴						
CA						
2002	4,300	12.00	51,600	51,600		
2003	4,300	12.80	55,000	55,000		
2004	4,000	12.00	48,000	48,000		
OR						
2002	13,000	10.80	141,000	140,000		
2003	13,000	12.00	156,000	152,000		
2004	13,000	11.50	149,000	149,000		
WA						
2002	13,500	17.10	231,000	231,000		
2003	14,000	16.90	237,000	237,000		
2004	14,500	14.30	208,000	208,000		
Total						
2002	30,800	13.80	423,600	422,600	375,600	47,000
2003	31,300	14.30	448,000	444,000	390,400	53,600
2004	31,500	12.90	405,000	405,000	360,000	45,000

¹ Missing data not published to avoid disclosure of individual operations.

² Yield is based on total production.

³ Processed mostly canned, but includes small quantities dried and other uses not published separately to avoid disclosure of individual operations.

⁴ Processed mostly juice, but includes small quantities canned and other uses not published separately to avoid disclosure of individual operations.

**Pears: Price and Value by Type, State,
and United States, 2002-2004 ¹**

Type, State and Year	Price per Ton			Value of Production		
	Fresh	Processed Exc. Dried	All	Fresh	Processed Inc. Dried	All
	<i>Dollars</i>	<i>Dollars</i>	<i>Dollars</i>	<i>1,000 Dollars</i>	<i>1,000 Dollars</i>	<i>1,000 Dollars</i>
Bartlett ²						
CA						
2002	270.00	230.00	242.00	18,630	37,490	56,120
2003	190.00	226.00	216.00	11,780	35,070	46,850
2004	261.00	251.00	252.00	17,748	38,540	56,288
OR						
2002	520.00	229.00	344.00	11,960	8,015	19,975
2003	457.00	211.00	334.00	12,339	5,707	18,046
2004	514.00	201.00	345.00	14,392	6,633	21,025
WA						
2002	520.00	233.00	313.00	22,880	26,562	49,442
2003	525.00	225.00	321.00	30,975	28,350	59,325
2004	529.00	196.00	295.00	26,979	23,505	50,484
Total						
2002	393.00	232.00	280.00	53,470	72,067	125,537
2003	372.00	224.00	272.00	55,094	69,127	124,221
2004	402.00	224.00	281.00	59,119	68,678	127,797
Other ³						
CA						
2002			405.00			20,898
2003			300.00			16,526
2004			503.00			24,144
OR						
2002			308.00			43,078
2003			324.00			49,282
2004			374.00			55,678
WA						
2002			290.00			66,995
2003			295.00			69,827
2004			396.00			82,418
Total						
2002	345.00	31.80	310.00	129,477	1,494	130,971
2003	343.00	34.70	305.00	133,777	1,858	135,635
2004	446.00	33.90	401.00	160,716	1,524	162,240

¹ Missing data not published to avoid disclosure of individual operations.

² Processed mostly canned, but includes small quantities dried and other uses not published separately to avoid disclosure of individual operations.

³ Processed mostly juice, but includes small quantities canned and other uses not published separately to avoid disclosure of individual operations.

**Hawaii Crops: Acreage Harvested, Yield, Utilized
Production, and Utilization, 2002-2004**

Crop and Year	Acreage Harvested	Yield Per Acre	Utilized Production	Utilization	
				Fresh	Processed
	<i>Acres</i>	<i>1,000 Pounds</i>	<i>1,000 Pounds</i>	<i>1,000 Pounds</i>	<i>1,000 Pounds</i>
Bananas					
2002	1,330	15.0	20,000	20,000	
2003	1,350	16.7	22,500	22,500	
2004	1,000	16.5	16,500	16,500	
Guavas					
2002	550	17.6	9,700		9,700
2003	530	12.6	6,700		6,700
2004	500	16.2	8,100		8,100
Papayas					
2002	1,720	26.7	45,900	42,700	3,200
2003	1,565	27.2	42,600	40,800	1,800
2004	1,235	29.0	35,800	34,100	1,700
	<i>Acres</i>	<i>1,000 Pounds</i>	<i>Tons</i>	<i>Tons</i>	<i>Tons</i>
Pineapples ¹					
2002	19,100		320,000	117,000	203,000
2003	16,000		300,000	130,000	170,000
2004	13,000		215,000	99,000	116,000

¹ Acreage is total acres in crop, not harvested acreage. Yield is not estimated. Production and processed utilization on a fresh weight basis.

Hawaii Crops: Price and Value, 2002-2004

Crop and Year	Price			Value of Production		
	Fresh	Processed	All	Fresh	Processed	Total
	<i>Dollars per Pound</i>	<i>Dollars per Pound</i>	<i>Dollars per Pound</i>	<i>1,000 Dollars</i>	<i>1,000 Dollars</i>	<i>1,000 Dollars</i>
Bananas						
2002	0.430		0.430	8,600		8,600
2003	0.410		0.410	9,225		9,225
2004	0.490		0.490	8,085		8,085
Guavas						
2002		0.150	0.150		1,455	1,455
2003		0.138	0.138		925	925
2004		0.144	0.144		1,166	1,166
Papayas						
2002	0.277	0.030	0.260	11,828	96	11,924
2003	0.319	0.030	0.307	13,015	54	13,069
2004	0.361	0.030	0.345	12,310	51	12,361
	<i>Dollars per Ton</i>	<i>Dollars per Ton</i>	<i>Dollars per Ton</i>			
Pineapples ¹						
2002	624.00	136.00	314.00	73,008	27,608	100,616
2003	604.00	135.00	338.00	78,520	22,950	101,470
2004	634.00	148.00	372.00	62,766	17,168	79,934

¹ Processed price is for fresh fruit delivered to processing plant door. Fresh price is for fruit at wholesale establishments for local sales and at shippers dock for mainland and foreign sales.

**Apples: Unutilized Production by State
and United States, 2002-2004**

Crop	Unharvested Production			Harvested Not Sold		
	2002	2003	2004	2002	2003	2004
	<i>Million Pounds</i>	<i>Million Pounds</i>	<i>Million Pounds</i>	<i>Million Pounds</i>	<i>Million Pounds</i>	<i>Million Pounds</i>
AZ				0.2		
AR	0.7	0.1	0.7	0.1		0.1
CA				10.0	10.0	10.0
CO	1.0		1.0		1.0	
CT	0.5	1.5	0.5			0.5
GA	0.1	0.1				
ID				1.0		
IL	4.8	4.9	4.9	2.9	1.7	0.3
IN	4.0	3.0	2.0			
IA	3.3	1.3	0.5			
KS	0.3	0.7	0.5	0.1	0.1	0.1
KY	1.5	0.3	0.5	0.1	0.1	0.2
ME	4.5	2.5	2.5		1.5	1.5
MD	0.1	0.1	0.1		1.5	1.0
MA	5.0	4.0	3.5		1.5	1.5
MI	5.0					
MN	6.0	6.2	4.1	1.3	1.0	1.0
MO	1.0			1.0		1.0
NH	0.5	1.0	1.0	1.5	0.5	1.5
NJ	3.0		1.0			1.0
NM			1.3	0.2	0.2	0.8
NY	50.0	10.0				
NC	5.0	5.0	23.0			
OH		2.0				
OR	15.0	1.0	3.0			
PA	1.0		5.0			
RI	0.4	0.3		0.1		0.1
SC	1.3	1.4	2.9	0.7	0.1	0.1
TN	1.0	0.4	0.5	0.1	0.1	
UT	0.5	0.5				0.6
VT	3.0	3.5	2.5		1.0	1.0
VA	3.0	8.0				3.0
WV	3.0	2.0	1.0			
WI	5.5	8.0	2.0	0.5	2.0	
US	130.0	67.8	64.0	19.8	22.3	25.3

**Miscellaneous Crops: Unutilized Production
by State and United States, 2002-2004**

Crop and State	Unharvested Production			Harvested Not Sold		
	2002	2003	2004	2002	2003	2004
	<i>Tons</i>	<i>Tons</i>	<i>Tons</i>	<i>Tons</i>	<i>Tons</i>	<i>Tons</i>
Peaches						
AL	350	450	3,360	750	200	640
AR	650	350	650		100	150
CA						
Freestone			2,000			44,000
Clingstone				25,000	30,500	
CO			500	250	500	500
GA	500	1,000	1,000	2,500	1,000	2,000
ID			500		200	
IL	350	150	1,000		200	100
IN	50	50				
KY			50			
LA	50	50	50			
MA	50	150	10			
MI		1,000			1,000	
NJ	2,500	2,500	1,500		1,500	500
NY		500				100
OH	150	150	100			
OK	250	50		50	50	
OR	250	500	100			
PA	500	1,000	300			
SC	9,000	3,500	2,500	6,000	6,500	12,500
TN	100	100	150	50	50	
TX	50	50	2,000	250	100	300
UT		50	450		100	
VA	150	150	50		250	50
WV					350	200
US	14,950	11,750	16,270	34,850	42,600	61,040
Nectarines						
CA			2,000			15,000
	<i>Million Pounds</i>	<i>Million Pounds</i>	<i>Million Pounds</i>	<i>Million Pounds</i>	<i>Million Pounds</i>	<i>Million Pounds</i>
Cherries (Tart)						
OR	0.1					
UT	0.1			0.1		
US	0.2			0.1		
	<i>Barrels¹</i>	<i>Barrels¹</i>	<i>Barrels¹</i>	<i>Barrels¹</i>	<i>Barrels¹</i>	<i>Barrels¹</i>
Cranberries						
NJ						8,000
WA	7,000					
US	7,000					8,000

¹ A barrel weighs 100 pounds.

**Miscellaneous Crops: Unutilized Production
by State and United States, 2002-2004**

Crop and State	Unharvested Production			Harvested Not Sold		
	2002	2003	2004	2002	2003	2004
	<i>Tons</i>	<i>Tons</i>	<i>Tons</i>	<i>Tons</i>	<i>Tons</i>	<i>Tons</i>
Apricots						
CA	10,000		8,500			
UT	10	20	40			
US	10,010	20	8,540			
Cherries (Sweet)						
CA				1,800	1,700	2,700
MI	100					
MT	90	60	70	40	150	70
NY		10	10			
OR	2,000		1,000			
PA			50			
UT	20				200	
US	2,210	70	1,130	1,840	2,050	2,770
Grapes						
AR	150	100	300			
CA		75,000				
GA	40	300	100			
MI	200	14,000	4,500			
NY	1,000	42,000			4,000	
OH		1,100				
OR			4,600			
PA		16,000			1,000	
TX	300	200	250			50
VA				400	200	300
US	1,690	148,700	9,750	400	5,200	350
Kiwifruit						
CA				3,000	1,400	2,000
Pears						
CO			100			
CT		30				
MI		500	60			
NY	150	700	1,600			1,000
OR	1,000	4,000	2,000			
PA	200	300	100	100		
UT					70	
US	1,350	5,530	3,860	100	70	1,000
Plums						
CA			1,000			11,000
Prunes & Plums						
ID	50		80		20	
MI	10		470			30
OR	800	1,400	5,500			
US	860	1,400	6,050		20	30
Prunes						
CA ¹				9,000	13,000	1,000

¹ CA prunes are on a dried basis.

**Berries: Unutilized Production by State
and United States, 2002-2004**

Crop and State	Unharvested Production			Harvested Not Sold		
	2002	2003	2004	2002	2003	2004
	<i>1,000 Pounds</i>	<i>1,000 Pounds</i>	<i>1,000 Pounds</i>	<i>1,000 Pounds</i>	<i>1,000 Pounds</i>	<i>1,000 Pounds</i>
Red Raspberries WA		500				
Cultivated Blueberries						
AL	240	140	410		10	
AR	80	100	100	10		
FL	200	300	400			
IN	100	100	100			
NJ	1,000	1,000				
NY	200	100	300			
NC	1,500					
US	3,320	1,740	1,310	10	10	
Boysenberries OR	30					
Black Raspberries OR	40	100				
Loganberries OR	10		10			
Cultivated Blackberries (OR)						
Marion		400				
Evergreen	300	100				
Other		100				
All	300	600				

**Apples for Fresh Use: Prices Received, by State, July 2002 - June 2005
and United States, July 2000 - June 2005 ¹**

State	2002						2003					
	Jul	Aug	Sep	Oct	Nov	Dec	Jan	Feb	Mar	Apr	May	Jun
	<i>Dollars per Pound</i>	<i>Dollars per Pound</i>	<i>Dollars per Pound</i>	<i>Dollars per Pound</i>	<i>Dollars per Pound</i>	<i>Dollars per Pound</i>	<i>Dollars per Pound</i>	<i>Dollars per Pound</i>	<i>Dollars per Pound</i>	<i>Dollars per Pound</i>	<i>Dollars per Pound</i>	<i>Dollars per Pound</i>
CA		0.333	0.339	0.291	0.226	0.219	0.262	0.203	0.207			
MI		0.210	0.250	0.240	0.230	0.230	0.210	0.210	0.210	0.190	0.200	
NY			0.288	0.297	0.282	0.276	0.278	0.272	0.269	0.270	0.296	
OH	0.228	0.290	0.305	0.305	0.296	0.311	0.309	0.320	0.317	0.307	0.302	
PA		0.220	0.202	0.207	0.212	0.242	0.221	0.238	0.226	0.214	0.202	
VA			0.214	0.223	0.170	0.180	0.196	0.180				
WA	0.207	0.233	0.305	0.316	0.283	0.268	0.256	0.246	0.228	0.228	0.212	0.204
State	2003						2004					
	Jul	Aug	Sep	Oct	Nov	Dec	Jan	Feb	Mar	Apr	May	Jun
	<i>Dollars per Pound</i>	<i>Dollars per Pound</i>	<i>Dollars per Pound</i>	<i>Dollars per Pound</i>	<i>Dollars per Pound</i>	<i>Dollars per Pound</i>	<i>Dollars per Pound</i>	<i>Dollars per Pound</i>	<i>Dollars per Pound</i>	<i>Dollars per Pound</i>	<i>Dollars per Pound</i>	<i>Dollars per Pound</i>
CA		0.402	0.226	0.227	0.266	0.266	0.271	0.183	0.267			
MI		0.200	0.235	0.210	0.190	0.185	0.185	0.185	0.190	0.190	0.180	0.180
NY			0.265	0.259	0.232	0.229	0.222	0.216	0.216	0.217	0.220	0.218
OH		0.320	0.324	0.321	0.278	0.298	0.279	0.276	0.278	0.273	0.278	
PA	0.208	0.214	0.214	0.220	0.215	0.215	0.202	0.202	0.202	0.202	0.202	
VA			0.230	0.225	0.225	0.220	0.215	0.210	0.210			
WA			0.301	0.297	0.320	0.310	0.330	0.329	0.328	0.320	0.313	0.309
State	2004						2005					
	Jul	Aug	Sep	Oct	Nov	Dec	Jan	Feb	Mar	Apr	May	Jun
	<i>Dollars per Pound</i>	<i>Dollars per Pound</i>	<i>Dollars per Pound</i>	<i>Dollars per Pound</i>	<i>Dollars per Pound</i>	<i>Dollars per Pound</i>	<i>Dollars per Pound</i>	<i>Dollars per Pound</i>	<i>Dollars per Pound</i>	<i>Dollars per Pound</i>	<i>Dollars per Pound</i>	<i>Dollars per Pound</i>
CA		0.241	0.222	0.250	0.160	0.213	0.154	0.285	0.335			
MI		0.220	0.225	0.215	0.215	0.210	0.190	0.190	0.185	0.185	0.185	0.175
NY			0.247	0.238	0.223	0.220	0.225	0.227	0.222	0.220	0.215	0.255
OH		0.320	0.320	0.315	0.310	0.315	0.295	0.290	0.290	0.255	0.240	
PA		0.175	0.171	0.170	0.172	0.173	0.175	0.175	0.175	0.175	0.171	
VA		0.270	0.280	0.270	0.260	0.250	0.240	0.230	0.220	0.200		
WA	0.300	0.282	0.297	0.272	0.254	0.222	0.213	0.198	0.176	0.163	0.170	0.158
	Jul	Aug	Sep	Oct	Nov	Dec	Jan ²	Feb	Mar	Apr	May	Jun
	United States											
2000	0.162	0.188	0.237	0.206	0.179	0.175	0.158	0.152	0.146	0.157	0.152	0.149
2001	0.151	0.167	0.213	0.247	0.235	0.231	0.218	0.216	0.220	0.218	0.215	0.204
2002	0.207	0.254	0.301	0.301	0.274	0.265	0.255	0.247	0.231	0.230	0.216	0.204
2003	0.208	0.346	0.270	0.278	0.305	0.288	0.297	0.300	0.304	0.298	0.296	0.296
2004	0.300	0.268	0.268	0.261	0.245	0.222	0.215	0.203	0.184	0.173	0.174	0.162

¹ Equivalent packinghouse-door returns for CA, NY, and WA; prices at point of first sale for other States.

² January of the following year.

**Grapes for Fresh Use: Monthly Average Prices Received,
United States, May 1999 - December 2004**

Year	May	Jun	Jul	Aug	Sep	Oct	Nov	Dec
	<i>Dollars Per Ton</i>	<i>Dollars Per Ton</i>	<i>Dollars Per Ton</i>	<i>Dollars Per Ton</i>	<i>Dollars Per Ton</i>	<i>Dollars Per Ton</i>	<i>Dollars Per Ton</i>	<i>Dollars Per Ton</i>
1999	1,300	880	695	765	555	525	595	595
2000	915	675	515	615	535	705	765	765
2001	790	1,190	630	600	670	640	640	850
2002	1,000	905	830	650	640	590	610	720
2003	930	970	760	650	620	600	660	730
2004	1,540	830	570	560	680	830	1,030	1,160

**Peaches for Fresh Use: Monthly Average Prices Received,
United States, 1999-2004 ¹**

State	May	Jun	Jul	Aug	Sep
	<i>Dollars per Ton</i>	<i>Dollars per Ton</i>	<i>Dollars per Ton</i>	<i>Dollars per Ton</i>	<i>Dollars per Ton</i>
1999	732	540	514	464	638
2000	664	528	476	438	690
2001	790	676	576	420	594
2002	962	578	528	486	556
2003	945	509	524	455	489
2004	918	476	407	427	522

¹ Equivalent packinghouse-door returns for CA and WA; price at point of first sale for other States.

**Pears for Fresh Use: Monthly Average Prices Received,
United States, July 1999 - June 2005 ¹**

Year	Jul	Aug	Sep	Oct	Nov	Dec	Jan ²	Feb	Mar	Apr	May	Jun
	<i>Dollars Per Ton</i>	<i>Dollars Per Ton</i>	<i>Dollars Per Ton</i>	<i>Dollars Per Ton</i>	<i>Dollars Per Ton</i>	<i>Dollars Per Ton</i>	<i>Dollars Per Ton</i>	<i>Dollars Per Ton</i>	<i>Dollars Per Ton</i>	<i>Dollars Per Ton</i>	<i>Dollars Per Ton</i>	<i>Dollars Per Ton</i>
1999	200	185	330	505	532	521	489	458	340	344	272	235
2000	233	249	315	403	339	347	313	252	296	337	417	(³)
2001	345	338	391	380	356	339	301	288	286	283	272	270
2002	322	316	366	419	402	398	333	322	318	316	319	(³)
2003	335	272	293	412	387	384	352	332	336	359	443	(³)
2004	325	382	392	438	440	446	455	475	474	479	498	(³)

¹ Equivalent packinghouse-door returns for CA, NY, and WA; price at point of first sale for other States.

² January for the following year.

³ Insufficient sales to establish a price.

**Nut Crops: Bearing Acreage and Yield by Crop,
State, and United States, 2002-2004**

Crop and State	Bearing Acreage			Yield per Acre ¹		
	2002	2003	2004	2002	2003	2004
	<i>Acres</i>	<i>Acres</i>	<i>Acres</i>	<i>Tons (In-Shell Basis)</i>	<i>Tons (In-Shell Basis)</i>	<i>Tons (In-Shell Basis)</i>
Hazelnuts OR	29,200	28,000	28,600	0.67	1.35	1.29
Walnuts (English) CA	210,000	213,000	217,000	1.34	1.53	1.50
				<i>Pounds (In-Shell Basis)</i>	<i>Pounds (In-Shell Basis)</i>	<i>Pounds (In-Shell Basis)</i>
Macadamia Nuts HI	17,800	17,800	17,800	2,980	2,980	3,170
Pistachios CA	83,000	88,000	93,000	3,650	1,350	3,730
				<i>Pounds (Shelled Basis)</i>	<i>Pounds (Shelled Basis)</i>	<i>Pounds (Shelled Basis)</i>
Almonds CA	545,000	550,000	550,000	2,000	1,890	1,840

¹ Yield is based on utilized production.

**Nut Crops: Production and Price by Crop,
State, and United States, 2002-2004**

Crop and State	Production			Price per Unit		
	2002	2003	2004	2002	2003	2004
	<i>Tons (In-Shell Basis)</i>	<i>Tons (In-Shell Basis)</i>	<i>Tons (In-Shell Basis)</i>	<i>Dollars per Ton</i>	<i>Dollars per Ton</i>	<i>Dollars per Ton</i>
Hazelnuts OR	19,500	37,900	36,800	1,000.00	1,030.00	1,440.00
Walnuts (English) CA	282,000	326,000	325,000	1,170.00	1,160.00	1,350.00
	1,000 Pounds					
	<i>(In-Shell Basis)</i>	<i>(In-Shell Basis)</i>	<i>(In-Shell Basis)</i>	<i>Dollars per Pound</i>	<i>Dollars per Pound</i>	<i>Dollars per Pound</i>
Macadamia Nuts HI	53,000	53,000	56,500	0.570	0.610	0.710
Pistachios CA	303,000	119,000	347,000	1.100	1.220	1.280
	1,000 Pounds					
	<i>(Shelled Basis)</i>	<i>(Shelled Basis)</i>	<i>(Shelled Basis)</i>	<i>Dollars per Pound</i>	<i>Dollars per Pound</i>	<i>Dollars per Pound</i>
Almonds ¹ CA	1,090,000	1,040,000	1,010,000	1.110	1.570	2.210

¹ Price and value are based on the edible portion of the crop only. Production includes inedible quantities of no value as follows: 2002 - 8.3 million pounds; 2003 - 20.8 million pounds; and 2004 - 14.5 million pounds.

Nut Crops: Use by Crop, State, and United States, 2002-2004

Crop and State	Production					
	Sold In-Shell			Sold Shelled ¹		
	2002	2003	2004	2002	2003	2004
	<i>Tons</i>	<i>Tons</i>	<i>Tons</i>	<i>Tons</i>	<i>Tons</i>	<i>Tons</i>
Hazelnuts OR	13,000	22,100	21,600	6,500	15,800	15,200
Walnuts (English) CA	67,000	81,000	75,000	215,000	245,000	250,000
	<i>1,000 Pounds</i>	<i>1,000 Pounds</i>	<i>1,000 Pounds</i>	<i>1,000 Pounds</i>	<i>1,000 Pounds</i>	<i>1,000 Pounds</i>
Pecans US	12,000	36,100	26,000	160,900	246,000	159,800
	<i>Marketable In-Shell</i>	<i>Marketable In-Shell</i>	<i>Marketable In-Shell</i>	<i>Shelling Stock ¹</i>	<i>Shelling Stock ¹</i>	<i>Shelling Stock ¹</i>
Pistachios CA	242,000	90,000	254,000	61,000	29,000	93,000

¹ In-shell basis.

**Nut Crops: Value and Meat Production by Crop,
State, and United States, 2002-2004**

Crop and State	Value of Utilized Production		
	2002	2003	2004
	<i>1,000 Dollars</i>	<i>1,000 Dollars</i>	<i>1,000 Dollars</i>
Hazelnuts OR	19,500	39,037	52,992
Walnuts (English) CA	329,940	378,160	438,750
Macadamia Nuts HI	30,210	32,330	40,115
Pistachios CA	333,300	145,180	444,160
Almonds ¹ CA	1,200,687	1,600,144	2,200,055
	Meat Production of Nuts Sold Shelled		
	2002	2003	2004
	<i>Tons</i>	<i>Tons</i>	<i>Tons</i>
Hazelnuts OR	2,600	6,300	5,800
Walnuts (English) CA	93,000	105,000	108,600
	<i>1,000 Pounds</i>	<i>1,000 Pounds</i>	<i>1,000 Pounds</i>
Pecans US	73,000	102,000	71,000
Pistachios CA	30,100	13,700	46,100

¹ Price and value are based on the edible portion of the crop only. Production includes inedible quantities of no value as follows:
2002 - 8.3 million pounds; 2003 - 20.8 million pounds; and 2004 - 14.5 million pounds.

**Pecans: Utilized Production and Price by Variety,
State, and United States, 2002-2004**

Variety and State	Utilized Production			Price per Pound		
	2002	2003	2004	2002	2003	2004
	<i>1,000 Pounds</i>	<i>1,000 Pounds</i>	<i>1,000 Pounds</i>	<i>Dollars</i>	<i>Dollars</i>	<i>Dollars</i>
Improved Varieties ¹						
AL	4,000	7,000	1,000	0.670	0.940	1.210
AZ	16,000	22,500	14,000	1.030	1.040	1.850
AR	1,200	1,400	1,000	0.600	1.100	1.400
CA	3,800	3,700	3,500	1.270	1.420	2.210
FL	500	500	400	0.870	1.000	1.500
GA	42,000	60,000	42,000	1.020	1.000	1.770
LA	2,000	4,000	2,500	0.890	1.080	1.400
MS	2,100	4,800	700	0.950	0.860	1.300
NM	36,000	55,000	39,000	1.250	1.280	2.280
NC	1,500	2,200	70	0.950	0.850	2.000
OK	1,500	1,500	6,000	0.600	1.120	1.600
SC	120	3,300	800	0.970	0.850	1.800
TX	20,000	37,000	28,000	1.020	1.110	1.840
US	130,720	202,900	138,970	1.070	1.100	1.920
Native and Seedling						
AL	1,000	1,000	100	0.490	0.690	0.840
AR	500	2,400	700	0.500	0.720	1.200
FL	900	1,600	100	0.500	0.600	0.950
GA	3,000	15,000	3,000	0.680	0.640	1.240
KS	2,900	2,000	1,800	0.750	0.870	1.750
LA	4,000	16,000	6,500	0.500	0.680	0.950
MS	900	2,200	300	0.550	0.500	0.800
NC	400	300	30	0.600	0.500	1.500
OK	8,500	4,500	22,000	0.500	0.800	1.350
SC	80	1,200	300	0.570	0.720	1.400
TX	20,000	33,000	12,000	0.650	0.690	1.270
US	42,180	79,200	46,830	0.603	0.683	1.280
All Pecans						
AL	5,000	8,000	1,100	0.634	0.909	1.180
AZ	16,000	22,500	14,000	1.030	1.040	1.850
AR	1,700	3,800	1,700	0.571	0.860	1.320
CA	3,800	3,700	3,500	1.270	1.420	2.210
FL	1,400	2,100	500	0.632	0.695	1.390
GA	45,000	75,000	45,000	1.000	0.928	1.730
KS	2,900	2,000	1,800	0.750	0.870	1.750
LA	6,000	20,000	9,000	0.630	0.760	1.080
MS	3,000	7,000	1,000	0.830	0.747	1.150
NM	36,000	55,000	39,000	1.250	1.280	2.280
NC	1,900	2,500	100	0.876	0.808	1.850
OK	10,000	6,000	28,000	0.515	0.880	1.400
SC	200	4,500	1,100	0.810	0.815	1.690
TX	40,000	70,000	40,000	0.835	0.912	1.670
US	172,900	282,100	185,800	0.955	0.984	1.760

¹ Budded, grafted, or topworked varieties.

**Pecans: Value of Production by Variety,
State, and United States, 2002-2004**

Variety and State	Value of Production		
	2002	2003	2004
	<i>1,000 Dollars</i>	<i>1,000 Dollars</i>	<i>1,000 Dollars</i>
Improved Varieties ¹			
AL	2,680	6,580	1,210
AZ	16,480	23,400	25,900
AR	720	1,540	1,400
CA	4,826	5,254	7,735
FL	435	500	600
GA	42,840	60,000	74,340
LA	1,780	4,320	3,500
MS	1,995	4,128	910
NM	45,000	70,400	88,920
NC	1,425	1,870	140
OK	900	1,680	9,600
SC	116	2,805	1,440
TX	20,400	41,070	51,520
US	139,597	223,547	267,215
Native and Seedling			
AL	490	690	84
AR	250	1,728	840
FL	450	960	95
GA	2,040	9,600	3,720
KS	2,175	1,740	3,150
LA	2,000	10,880	6,175
MS	495	1,100	240
NC	240	150	45
OK	4,250	3,600	29,700
SC	46	864	420
TX	13,000	22,770	15,240
US	25,436	54,082	59,709
All Pecans			
AL	3,170	7,270	1,294
AZ	16,480	23,400	25,900
AR	970	3,268	2,240
CA	4,826	5,254	7,735
FL	885	1,460	695
GA	44,880	69,600	78,060
KS	2,175	1,740	3,150
LA	3,780	15,200	9,675
MS	2,490	5,228	1,150
NM	45,000	70,400	88,920
NC	1,665	2,020	185
OK	5,150	5,280	39,300
SC	162	3,669	1,860
TX	33,400	63,840	66,760
US	165,033	277,629	326,924

¹ Budded, grafted, or topworked varieties.

Definition of Terms

Apples, Commercial Crop refers to orchards of 100 or more bearing age trees.

Bearing Acreage - An orchard, grove, or vineyard is considered bearing when it reaches an age when it can normally be expected to produce a commercially significant quantity of the crop. Bearing age is a function of many factors including variety, rootstock, year planted, etc. Bearing acreage is primarily based upon periodic orchard surveys. In non-survey years, bearing acreage is based on trends, county extension service data, end-of-year production surveys, and other indications.

Prices are a marketing year average for all methods of sale. For a crop sold for both fresh market and processing, the **Marketing Year Average Price (MYA)** is a weighted average of the fresh and processing price.

Prices for fresh fruit are the average prices producers receive at the point of first sale. This is commonly referred to as the **average price as sold**. Since the point of first sale is not the same for all producers, prices for the various methods of sale are weighted by the proportionate quantity sold. For example, if in a given State part of the fruit is sold F.O.B. packed by growers, part is sold as bulk fruit at the packinghouse door, and some is sold retail at roadside stands, the fresh fruit **average price as sold** is a weighted average of the average price for each method of sale. The exception is fresh fruit sales in California, Washington, and New York (apples only) which are equivalent returns at packinghouse door. The equivalent packinghouse returns represent adjusted prices.

F.O.B. packed prices are adjusted to an equivalent incoming packinghouse door price by subtracting all costs that accumulate between the incoming packinghouse door and the F.O.B. price. These costs include grading, packing, inspecting fees, selling, and other costs.

Prices for fruit sold for processing are equivalent returns for fruit delivered to the processing plant door except for cranberries, California olives, and clingstone peaches which are priced at the first delivery point.

Crop value estimates in this report cover the marketing season or crop year and should not be confused with cash receipts from these crops which are on a calendar year.

Total Production is the quantity actually harvested plus quantities which would have been acceptable for fresh market or processing but were not harvested because of economic or natural reasons.

Unutilized Production is the difference between total and utilized production which is marketable fruit not harvested for economic or natural reasons and harvested fruit not sold or utilized.

Harvested not sold is fruit of marketable quality that was picked but not sold for various reasons. Harvested not sold amounts up to 2 percent of total production are considered normal seasonal losses and are excluded from total production.

Unharvested Production is marketable fruit produced, but not harvested for various reasons. Unharvested amounts up to 2 percent of total production are considered normal seasonal losses and are excluded from total production.

Utilization refers to first utilization, not necessarily final utilization. For example, frozen fruit includes some fruit that may be later used for making preserves. Grade-outs for fresh market fruit which are processed are included in the processing quantity. Fruit graded-out from canning or freezing and utilized for juice is included with juice.

Utilized Production is the amount sold plus the quantities used at home or held in storage.

Yield per Acre is based on total production which includes unharvested production and fruit harvested but not sold due to marketing conditions.

State Value of Utilized Production and MYA Price Computations

The following procedure is used to compute State Values of Utilized Production and MYA Prices:

Fresh Market Value = Fresh Market MYA
 Times
 Fresh Market Utilization

Process Market Value = Process Market MYA
 Times
 Process Market Utilization

"All" Sales Value = Fresh Market Value
 Plus
 Process Market Value

"All" Sales MYA = "All" Sales Value
 Divided By
 "All" Sales Utilization

For commodities with components not identified by market channel, substitute breakdown name for fresh/processing market and use the same procedure.

U.S. MYA Price Computations

The following procedure is used to compute the U.S. MYA Prices:

Fresh Market MYA = Fresh Market Value For All States
 Divided By
 Fresh Market Utilization For All States

Process Market MYA = Process Market Value For All States
 Divided By
 Process Market Utilization For All States

"All" Sales MYA = Sales Value For All States
 Divided By
 Sales Utilization For All States

Marketing Seasons for Noncitrus Fruits ¹

Apples:

All South Atlantic States, plus AR, CA, IL, IN, KY, MO, NM, TN June - May
OR, WA August - July
All other States July - June

Apricots:

Fresh Fruit May 25 - August 20
Canning June 15 - August 15
Dried (CA) June 20 - August 20

Avocados:

CA November 1 through November 30 the following year
FL June 20 - February 28
HI January 1 - December 31 (peak harvest March 1 - April 30)

Bananas: January 1 - December 31

Cherries, Sweet: May 1 - August 15

Cherries, Tart: June 15 - August 20

Cranberries: September 5 - December 20

Dates: August 15 - March 15

Figs:

Fresh Fruit June 5 - October 31
Canning August 1 - October 15
Dried (CA) June 20 - October 31

Grapes:

Fresh (CA) May 25 - April 30
Fresh (AZ) June 5 - July 15
Fresh (All other States) July 10 - October 31
Crushed for Juice, Wine, or Brandy August 1 - December 15
Dried for Raisins (CA) September 1 - May 31

Guavas: January 1 - December 31 (peak harvest September 1 - October 31)

Kiwifruit: November 1 - April 30

Nectarines: June 10 - August 31

¹See footnote on next page.

Marketing Seasons for Noncitrus Fruits ¹ (continued)

Olives:	September 25 - March 15
Papayas:	January 1 - December 31
Peaches:	
Fresh (GA and SC)	May 20 - August 31
Fresh (Other South Atlantic States, South Central States, CA)	June 1 - September 30
Fresh (New England States, ID, MI, NY)	August 1 - September 30
Fresh (All other States)	July 1 - September 30
Canning (CA)	July 1 - September 10
Dried (CA)	August 1 - October 10
Pears:	
Fresh (CA)	July 1 - April 30
Fresh (WA and OR)	August 10 - July 31
Fresh (Other States)	July 1 - December 15
Canning and Dried (CA, OR, WA)	August 1 - November 30
Pineapples:	January 1 - December 31 (peak harvest March 1 - July 31)
Plums:	
Fresh (CA)	May 25 - September 30
Canning (CA)	June 1 - September 30
Prunes, Dried (CA):	August 1 - April 30
Prune and Plums:	
Fresh and Canning (ID, MI, OR, WA)	August 10 - October 20

Marketing Seasons for Tree Nuts ¹

Almonds:	August 5 - November 15
Hazelnuts (Filberts):	October 1 - September 30
Macadamia Nuts:	January 1 - December 31 (peak harvest August 1 - December 31)
Pecans:	September 30 - March 15
Pistachios:	September 1 - October 31
Walnuts:	September 15 - December 31

¹ For detail by States, see Agricultural Handbook No. 186, "Fruits and Tree Nuts, Blooming, Harvesting, and Marketing Dates", Dec 1975.

Information Contacts

Listed below are the commodity specialists in the Crops Branch of the National Agricultural Statistics Service to contact for additional information.

Joe Prusacki, Chief	(202) 720-2127
Field Crops Section	
Greg Thessen, Head	(202) 720-2127
Lance Honig - Wheat, Rye	(202) 720-8068
Troy Joshua - Cotton, Cotton Ginnings	(202) 720-5944
Ty Kalasus - Corn, Proso Millet, Flaxseed	(202) 720-9526
Dennis Koong - Peanuts, Rice	(202) 720-7688
Jason Lamprecht - Soybeans, Sunflower, Other Oilseeds	(202) 720-7369
Travis Thorson - Hay, Oats, Sorghum	(202) 690-3234
Brian Young - Crop Weather, Barley, Sugar Crops	(202) 720-7621
Fruit, Vegetable & Special Crops Section	
Jim Smith, Head	(202) 720-2127
Leslie Colburn - Berries, Grapes, Maple Syrup, Tobacco	(202) 720-7235
Debbie Flippin - Austrian Winter Peas, Dry Edible Peas, Lentils, Mint, Mushrooms, Peaches, Pears, Wrinkled Seed Peas	(202) 720-3250
Jorge Garcia-Pratts - Citrus, Tropical Fruits	(202) 720-5412
Rich Holcomb - Floriculture, Nursery, Nuts	(202) 720-4215
Terry O'Connor - Apples, Apricots, Cherries, Cranberries, Plums, Prunes	(202) 720-4288
Kim Ritchie - Hops	(360) 902-1940
Cathy Scherrer - Dry Beans, Potatoes, Sweet Potatoes	(202) 720-4285
Biz Wallingsford - Fresh and Processing Vegetables, Onions, Strawberries	(202) 720-2157

ACCESS TO REPORTS!!

For your convenience, there are several ways to obtain NASS reports, data products, and services:

INTERNET ACCESS

All NASS reports are available free of charge on the worldwide Internet. For access, connect to the Internet and go to the NASS Home Page at: www.usda.gov/nass/. Select "Today's Reports" or Publications and then Reports Calendar or Publications and then Search, by Title or Subject.

E-MAIL SUBSCRIPTION

All NASS reports are available by subscription free of charge direct to your e-mail address. Starting with the NASS Home Page at www.usda.gov/nass/, click on **Publications**, then click on the **Subscribe by E-mail** button which takes you to the page describing e-mail delivery of reports. Finally, click on **Go to the Subscription Page** and follow the instructions.

PRINTED REPORTS OR DATA PRODUCTS

CALL OUR TOLL-FREE ORDER DESK: 800-999-6779 (U.S. and Canada)
Other areas, please call 703-605-6220 FAX: 703-605-6900
(Visa, MasterCard, check, or money order acceptable for payment.)

ASSISTANCE

For **assistance** with general agricultural statistics or further information about NASS or its products or services, contact the **Agricultural Statistics Hotline** at **800-727-9540**, 7:30 a.m. to 4:00 p.m. ET, or e-mail: nass@nass.usda.gov.

The U.S. Department of Agriculture (USDA) prohibits discrimination in all its programs and activities on the basis of race, color, national origin, sex, religion, age, disability, political beliefs, sexual orientation, and marital or family status. (Not all prohibited bases apply to all programs.) Persons with disabilities who require alternative means for communication of program information (Braille, large print, audiotape, etc.) should contact USDA's TARGET Center at 202-720-2600 (voice and TDD).

To file a complaint of discrimination, write USDA, Director, Office of Civil Rights, Room 326-W, Whitten Building, 14th and Independence Avenue, SW, Washington, DC 20250-9410 or call 202-720-5964 (voice and TDD). USDA is an equal opportunity provider and employer.