



United States  
Department of  
Agriculture

National  
Agricultural  
Statistics  
Service



Fr Nt 1-3 (06)

# Noncitrus Fruits and Nuts 2005 Preliminary Summary

## January 2006

# USDA





## Contents

	Page
<b>Noncitrus Fruits and Tree Nuts</b>	
Bearing Acreage, U.S . . . . .	7
Bearing Acreage and Yield per Acre by Crop . . . . .	4
Narrative . . . . .	3
Price and Value by Crop . . . . .	6
Production Utilization, U.S. . . . .	7
Total and Utilized Production by Crop. . . . .	5
<b>Noncitrus Fruits</b>	
Apples, Commercial Crop . . . . .	10, 64, 68
Apricots . . . . .	20, 26, 27, 66, 70
Avocados . . . . .	20
Bananas . . . . .	62
Berries (excluding strawberries) . . . . .	30, 67
California Dry Fruits . . . . .	27
Cherries, Sweet . . . . .	36, 40, 66
Cherries, Tart . . . . .	38, 40, 65
Cranberries . . . . .	42, 65
Dates . . . . .	20
Figs . . . . .	22, 26, 27, 70
Grapes . . . . .	27, 44, 66, 69, 71
Guavas . . . . .	62
Hawaii Crops . . . . .	62
Kiwifruit . . . . .	22, 66
Nectarines . . . . .	22, 65
Olives . . . . .	22, 26
Papayas . . . . .	62
Peaches . . . . .	27, 50, 65, 69, 71
Pears . . . . .	27, 58, 66, 69, 70
Pineapples . . . . .	62
Plums . . . . .	22, 66, 70
Prunes (dried basis) . . . . .	24, 27, 66
Prunes and Plums . . . . .	24, 26, 66
Strawberries . . . . .	28
Unutilized Production . . . . .	64
<b>Tree Nuts</b>	
Almonds . . . . .	72
Hazelnuts . . . . .	72
Macadamia Nuts . . . . .	72
Pecans . . . . .	74, 76
Pistachios . . . . .	72
Walnuts . . . . .	72
<b>Definition of Terms . . . . .</b>	<b>78</b>
<b>Information Contacts . . . . .</b>	<b>83</b>
<b>Marketing Seasons . . . . .</b>	<b>80</b>
<b>Reliability of Production Data in this Report . . . . .</b>	<b>82</b>
<b>State Value of Utilized Production Computation . . . . .</b>	<b>79</b>
<b>U.S. MYA Price Computation . . . . .</b>	<b>79</b>

This page intentionally left blank.

## 2005 Noncitrus Fruit Utilized Production Up 3 Percent, Value Up 4 Percent

In 2005, the Nation's utilized production of the leading noncitrus fruit crops totaled 17.2 million tons, up 3 percent from the comparable 2004 utilized production. Utilized production increased from 2004 for cultivated blueberries, Maine wild blueberries, Oregon loganberries, Oregon black raspberries, red raspberries, tart cherries, cranberries, grapes, California kiwifruit, California olives, California plums, California prunes, and strawberries.

The value of utilized production for noncitrus fruit crops totaled 9.34 billion dollars, up 4 percent from 2004. The value of utilized production for California prunes increase 81 percent, nectarines increased 51 percent, California olives are up 28 percent, California plums increased 27 percent, and apricots are up 16 percent from the previous year. However, the value of utilized production for prunes and plums decreased 27 percent, California dates are down 14 percent, Hawaii papayas decreased 11 percent, tart cherries decreased 6 percent, strawberries are down 5 percent, and Hawaii pineapples decreased 5 percent from 2004.

### Highlights

**Utilized apple** production for 2005 is estimated at 9.78 billion pounds, down 6 percent from the 2004 level. Utilized production for Washington and New York decrease 6 percent and 20 percent, respectively, while Michigan's utilized production increased 8 percent compared to the previous year. In New York, a spring frost during bloom, extreme heat during early summer, and heavy rains and winds during mid October reduced the 2005 crop. Below normal humidity levels in Michigan kept disease pressure low and the apple crop was ahead of normal development throughout the growing season.

**Utilized grape** production for 2005 totaled 6.97 million tons, up 12 percent from the 2004 crop. The California crop, which accounts for 88 percent of the 2005 U.S. utilized grape production, is up 9 percent from the previous year. Also for California, raisin type production rose 3 percent from 2004, wine type production increased 14 percent, and table type production is up 8 percent. Utilized production increased from 2004 in all grape estimating States except Arizona, Arkansas, and Texas.

**Utilized peach** production in 2005 is estimated at 1.14 million tons, down 7 percent from the previous year and 5 percent below 2003. The California crop, accounting for 76 percent of the U.S. utilized peach production, is down 6 percent from 2004. For California, the Clingstone peach estimate is down 10 percent and the Freestone estimate is down 1 percent from 2004.

**Utilized pear** production for 2005 is 811,670 tons, down 7 percent from the previous year. Washington, the top producing State, utilized 400,000 tons, up 9 percent from 2004. California, the second largest producer at 200,000 tons, is down 26 percent from the previous season. Utilized pear production in Oregon, the third largest producing State, is 196,000 tons, down 7 percent from 2004.

### U.S. Nut Production Down 4 Percent, Value Up 22 Percent

The 2005 U.S. nut production is estimated at 1.46 million tons (in-shell basis), a 4 percent decrease from a year earlier. The almond crop totaled 775,900 tons, down 10 percent from 2004. Walnut production for 2005, at 355,000 tons, is up 9 percent from the previous year. The pistachio crop totaled 141,500 tons, 18 percent less than 2004. Pecan production for 2005 is estimated at 129,800 tons, a 40 percent increase from 2004. Hazelnut production, at 28,000 tons, is down 25 percent from the previous year. Macadamia production, at 30,000 tons, is up 6 percent.

The 2005 U.S. value of utilized nut production is estimated at 4.30 billion dollars, up 22 percent from the revised 2004 value. The almond crop is valued at 2.72 billion dollars, up 24 percent from 2004. Pistachio value for 2005, at 574 million dollars, is 24 percent greater than last year. The pecan crop showed a 22 percent increase in value, to 400 million dollars. Hazelnut value, at 57.1 million dollars, is 6 percent higher than the previous year. The macadamia value, at 46.8 million dollars, is up 13 percent.

**Noncitrus Fruits and Nuts: Bearing Acreage and Yield per Acre  
by Crop, United States, 2003-2005**

Crop	Bearing Acreage			Yield per Acre		
	2003	2004	2005	2003	2004	2005
	<i>Acres</i>	<i>Acres</i>	<i>Acres</i>	<i>Tons</i>	<i>Tons</i>	<i>Tons</i>
Noncitrus Fruits						
Apples	390,450	385,560	381,160	11.30	13.60	13.00
Apricots	17,840	17,340	15,840	5.47	5.83	5.14
Avocados <sup>1</sup>	66,900	68,670		3.49	2.61	
Bananas (HI) <sup>2 3</sup>	1,350	1,000		8.35	8.25	
Blackberries (OR) <sup>3 4</sup>	6,400	6,300	6,400	3.26	3.72	3.42
Blueberries						
Cultivated <sup>3</sup>	41,670	44,430	48,310	2.26	2.56	2.41
Wild (ME) <sup>5</sup>						
Boysenberries <sup>3</sup>	1,000	1,050	910	2.15	2.95	2.80
Loganberries (OR) <sup>3</sup>	70	60	60	1.36	1.42	1.84
Raspberries <sup>3</sup>						
Black (OR)	1,100	1,100	1,300	1.05	1.08	1.80
Red	11,200	10,900	11,400	3.23	3.03	3.39
All (CA)	3,000	4,100	4,200	10.30	11.00	9.80
Cherries, Sweet	74,990	78,275	79,010	3.28	3.62	3.18
Cherries, Tart	36,970	36,950	37,100	3.06	2.88	3.65
Cranberries	39,600	39,200	39,100	7.82	7.88	7.96
Dates (CA)	4,700	4,700	4,600	3.81	3.64	3.61
Figs (CA)	13,000	12,800	12,300	3.73	3.99	4.14
Grapes	951,010	933,100	934,750	6.99	6.69	7.46
Guavas (HI) <sup>3 6</sup>	530	500		6.30	8.10	
Kiwifruit (CA)	4,500	4,500	4,500	5.64	5.93	9.24
Nectarines	36,500	36,500	37,700	7.48	7.37	6.62
Olives (CA)	36,000	32,000	32,000	3.28	3.25	4.34
Papayas (HI) <sup>3</sup>	1,565	1,235	1,450	13.60	14.50	11.20
Peaches	145,530	146,170	140,360	8.65	8.94	8.43
Pears	64,150	64,450	63,350	14.60	13.60	12.80
Pineapples (HI) <sup>7</sup>	16,000	13,000	14,000			
Plums (CA)	36,000	36,000	36,000	5.81	4.33	4.75
Prunes (CA)	72,000	70,000	67,000	8.02	2.06	4.09
Prunes & Plums <sup>8</sup>	4,010	3,960	3,860	4.06	6.31	2.25
Strawberries <sup>3</sup>	48,400	51,400	52,200	22.30	21.50	22.20
Total	2,126,435	2,105,250	2,028,860			
Tree Nuts						
Almonds (CA) <sup>9</sup>	550,000	570,000	580,000	1.58	1.52	1.34
Hazelnuts (OR)	28,000	28,400	28,300	1.35	1.32	0.99
Macadamias	17,800	17,800	18,000	1.49	1.59	1.67
Pecans <sup>5</sup>						
Pistachios	88,000	93,000	98,000	0.68	1.87	1.44
Walnuts (CA)	213,000	217,000	219,000	1.53	1.50	1.62
Total	896,800	926,200	943,300			

<sup>1</sup> Estimates for 2005 will be published on July 6, 2006.

<sup>2</sup> 2005 data not published to avoid disclosure of individual operations.

<sup>3</sup> Harvested acreage. Yield based on utilized production.

<sup>4</sup> Cultivated.

<sup>5</sup> Bearing acreage and yield not calculated.

<sup>6</sup> Estimates for 2005 will be published on May 12, 2006.

<sup>7</sup> Acreage is total acres in crop, not harvested acreage. Yield is not estimated.

<sup>8</sup> ID, MI, OR, and WA.

<sup>9</sup> Yield based on in-shell basis. Shelling ratios are: 2003 - 0.600; 2004 - 0.580; 2005 - 0.580.

**Noncitrus Fruits and Nuts: Total and Utilized Production  
by Crop, United States, 2003-2005**

Crop	Total Production			Utilized Production		
	2003	2004	2005	2003	2004	2005
	<i>1,000 Tons Fresh Equivalent</i>	<i>1,000 Tons Fresh Equivalent</i>	<i>1,000 Tons Fresh Equivalent</i>	<i>1,000 Tons Fresh Equivalent</i>	<i>1,000 Tons Fresh Equivalent</i>	<i>1,000 Tons Fresh Equivalent</i>
Noncitrus Fruits						
Apples	4,396.6	5,225.3	4,934.8	4,351.5	5,185.7	4,889.6
Apricots	97.6	101.1	81.4	97.6	92.6	76.3
Avocados <sup>1</sup>	233.4	179.4		233.4	179.4	
Bananas (HI) <sup>2 3</sup>				11.3	8.3	
Blackberries (OR) <sup>4</sup>	21.2	23.5	22.2	20.9	23.5	21.9
Blueberries						
Cultivated	94.8	114.4	116.5	94.0	113.8	116.3
Wild (ME)	40.2	23.0	29.3	40.2	23.0	29.3
Boysenberries	2.2	3.1	2.6	2.2	3.1	2.6
Loganberries (OR)	0.1	0.1	0.1	0.1	0.1	0.1
Raspberries						
Black (OR)	1.2	1.2	2.3	1.2	1.2	2.3
Red	36.5	33.1	38.7	36.2	33.1	38.7
All (CA)	30.8	45.0	41.3	30.8	45.0	41.3
Cherries, Sweet	245.7	283.1	251.2	243.6	279.2	243.9
Cherries, Tart	113.2	106.5	135.2	113.2	106.5	134.2
Cranberries	309.7	308.8	311.3	309.7	308.4	311.3
Dates (CA)	17.9	17.1	16.6	17.9	17.1	16.6
Figs (CA)	48.5	51.1	50.9	48.5	51.1	50.9
Grapes	6,643.5	6,240.0	6,974.9	6,489.6	6,229.9	6,971.7
Guavas (HI) <sup>3 5</sup>				3.4	4.1	
Kiwifruit (CA)	25.4	26.7	41.6	24.0	24.7	38.3
Nectarines	273.0	269.0	249.4	273.0	252.0	249.4
Olives (CA)	118.0	104.0	139.0	118.0	104.0	139.0
Papayas (HI) <sup>3</sup>				21.3	17.9	16.3
Peaches	1,259.5	1,307.1	1,182.6	1,205.2	1,229.8	1,143.2
Pears	934.1	877.3	812.3	928.5	872.4	811.7
Pineapples (HI) <sup>3</sup>				300.0	220.0	212.0
Plums (CA)	209.0	156.0	171.0	209.0	144.0	171.0
Prunes (CA)	577.5	143.9	274.2	536.0	141.0	265.0
Prunes & Plums <sup>6</sup>	16.3	25.0	8.7	14.9	18.9	8.7
Strawberries <sup>3</sup>				1,078.0	1,106.9	1,161.1
Total				16,853.2	16,836.7	17,162.7
	<i>1,000 Tons In-Shell Equivalent</i>	<i>1,000 Tons In-Shell Equivalent</i>	<i>1,000 Tons In-Shell Equivalent</i>	<i>1,000 Tons In-Shell Equivalent</i>	<i>1,000 Tons In-Shell Equivalent</i>	<i>1,000 Tons In-Shell Equivalent</i>
Tree Nuts <sup>3</sup>						
Almonds (CA)				866.7	866.4	775.9
Hazelnuts (OR)				37.9	37.5	28.0
Macadamias (HI)				26.5	28.3	30.0
Pecans				141.1	92.9	129.8
Pistachios (CA)				59.5	173.5	141.5
Walnuts (CA)				326.0	325.0	355.0
Total				1,457.7	1,523.6	1,460.2

<sup>1</sup> Estimates for 2005 will be published on July 6, 2006.

<sup>2</sup> 2005 utilized production not published to avoid disclosure of individual operations.

<sup>3</sup> Only utilized production estimated.

<sup>4</sup> Cultivated.

<sup>5</sup> Estimates for 2005 will be published on May 12, 2006.

<sup>6</sup> ID, MI, OR, and WA.

**Noncitrus Fruits and Nuts: Price and Value  
by Crop, United States, 2003-2005**

Crop	Unit <sup>1</sup>	Price			Value of Utilized Production		
		2003	2004	2005	2003	2004	2005
		<i>Dollars</i>	<i>Dollars</i>	<i>Dollars</i>	<i>1,000 Dollars</i>	<i>1,000 Dollars</i>	<i>1,000 Dollars</i>
Noncitrus Fruits							
Apples	Lb	0.209	0.159	0.183	1,817,240	1,647,983	1,786,674
Apricots	Ton	356.00	378.00	533.00	34,702	35,012	40,723
Avocados <sup>2</sup>	Ton	1,690.00	1,630.00		394,367	292,754	
Bananas (HI) <sup>3</sup>	Lb	0.410	0.490		9,225	8,085	
Blackberries (OR) <sup>4</sup>	Lb	0.695	0.712	0.748	28,986	33,407	32,743
Blueberries							
Cultivated	Lb	1.170	1.210	1.390	220,649	275,963	323,788
Wild (ME)	Lb	0.334	0.456	0.605	26,880	20,970	35,370
Boysenberries	Lb	0.866	1.160	1.400	3,725	7,168	7,158
Loganberries (OR)	Lb	0.990	0.771	0.855	189	131	188
Raspberries							
Black (OR)	Lb	1.360	2.250	2.460	3,132	5,357	11,476
Red	Lb	0.563	0.782	0.583	40,774	51,723	45,052
All (CA)	Lb	2.080	2.090	1.990	127,920	188,100	164,175
Cherries							
Sweet	Ton	1,400.00	1,570.00	1,980.00	342,113	437,133	483,504
Tart	Lb	0.354	0.326	0.243	80,210	69,501	65,296
Cranberries	Bbl	33.90	32.30	34.00	209,834	199,296	211,527
Dates (CA)	Ton	2,300.00	2,260.00	2,000.00	41,170	38,646	33,200
Figs (CA) <sup>2</sup>	Ton	317.00	396.00		15,373	20,214	
Grapes	Ton	402.00	483.00	432.00	2,609,289	3,010,958	3,013,418
Guavas (HI) <sup>2</sup>	Lb	0.138	0.144		925	1,166	
Kiwifruit (CA) <sup>2</sup>	Ton	853.00	809.00		20,472	19,977	
Nectarines	Ton	436.00	342.00	521.00	119,028	86,184	129,969
Olives (CA)	Ton	409.00	571.00	548.00	48,289	59,379	76,126
Papayas (HI)	Lb	0.307	0.345	0.338	13,069	12,361	10,971
Peaches	Ton	377.00	375.00	446.00	454,286	461,629	509,745
Pears	Ton	294.00	340.00	388.00	273,142	296,291	315,240
Pineapples (HI)	Ton	338.00	378.00	374.00	101,470	83,104	79,288
Plums (CA)	Ton	418.00	516.00	551.00	87,362	74,347	94,163
Prunes (CA)	Ton	772.00	1,500.00	1,500.00	129,696	72,000	130,500
Prunes & Plums <sup>5</sup>	Ton	353.00	360.00	577.00	5,260	6,802	4,993
Strawberries	Cwt	63.80	66.00	59.60	1,375,142	1,460,077	1,383,064
Total <sup>6</sup>					8,633,919	8,975,718	9,341,497
Almonds (CA) (Shelled)	Lb	1.570	2.210	3.080	1,600,144	2,189,005	2,724,876
Hazelnuts (OR)	Ton	1,030.00	1,440.00	2,040.00	39,037	54,000	57,120
Macadamias (HI)	Lb	0.610	0.730	0.780	32,330	41,245	46,800
Pecans	Lb	0.984	1.760	1.540	277,629	326,924	400,441
Pistachios (CA)	Lb	1.220	1.340	2.030	145,180	464,980	574,490
Walnuts (CA) <sup>2</sup>	Ton	1,160.00	1,390.00		378,160	451,750	
Total <sup>6</sup>					2,472,480	3,527,904	4,297,177

<sup>1</sup> Ton refers to the 2,000 lb. short ton.

<sup>2</sup> Estimates for 2005 will be published on July 6, 2006.

<sup>3</sup> 2005 data not published to avoid disclosure of individual operations.

<sup>4</sup> Cultivated.

<sup>5</sup> ID, MI, OR, and WA.

<sup>6</sup> Includes estimated 2005 value of production for crops noted by footnote 2. Used 2004 price to compute the 2005 fig, kiwifruit, and walnut value. The 2004 values for avocados, bananas, and guavas are carried forward.



**Fruits and Nuts: Bearing Acreage,  
United States, 2003-2005**

Year	Citrus Fruits <sup>1</sup>	Major Deciduous Fruits <sup>2</sup>	Miscellaneous Noncitrus <sup>3</sup>	Nuts <sup>4</sup>	Total
	<i>Acres</i>	<i>Acres</i>	<i>Acres</i>	<i>Acres</i>	<i>Acres</i>
2003	1,031,900	1,829,450	296,985	896,800	4,055,135
2004	983,600	1,808,305	296,945	926,200	4,015,050
2005 <sup>5</sup>	939,000	1,796,130	232,730	943,300	3,911,160

<sup>1</sup> Grapefruit, lemons, oranges, tangelos, tangerines, and Temples.

<sup>2</sup> Commercial apples, apricots, cherries, grapes, nectarines, peaches, pears, plums, and prunes.

<sup>3</sup> Avocados, bananas, berries, cranberries, dates, figs, guavas, kiwifruit, olives, papayas, pineapples, and strawberries.

<sup>4</sup> Almonds, hazelnuts, macadamia nuts, pistachios, and walnuts.

<sup>5</sup> Preliminary. Avocados, bananas, and guavas not included.

**Noncitrus Fruits: Production Utilization,  
United States, 2003-2005 <sup>1</sup>**

Year	Utilized Production	Fresh	Processed <sup>2</sup>					Other
			Canned	Dried	Juice	Frozen	Wine	
	<i>1,000 Tons</i>	<i>1,000 Tons</i>	<i>1,000 Tons</i>	<i>1,000 Tons</i>	<i>1,000 Tons</i>	<i>1,000 Tons</i>	<i>1,000 Tons</i>	<i>1,000 Tons</i>
2003	16,853.2	6,675.8	1,762.3	2,293.2	1,295.4	715.8	3,581.7	219.3
2004	16,836.7	7,178.7	1,711.0	1,425.1	1,423.2	685.5	3,818.5	286.3
2005	17,162.7							

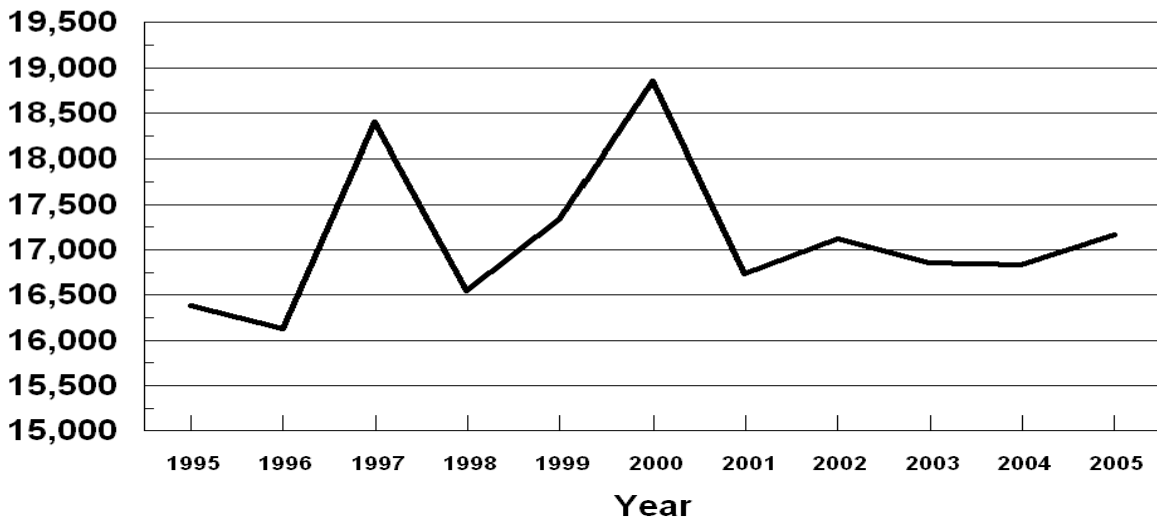
<sup>1</sup> 2005 is preliminary. Avocados, bananas, and guavas not included. Fresh and processed tons will be published on July 6, 2006.

<sup>2</sup> Cranberry quantity included in utilized production, excluded from fresh and processed breakdown.

<sup>2</sup> Processed strawberries are included in frozen.

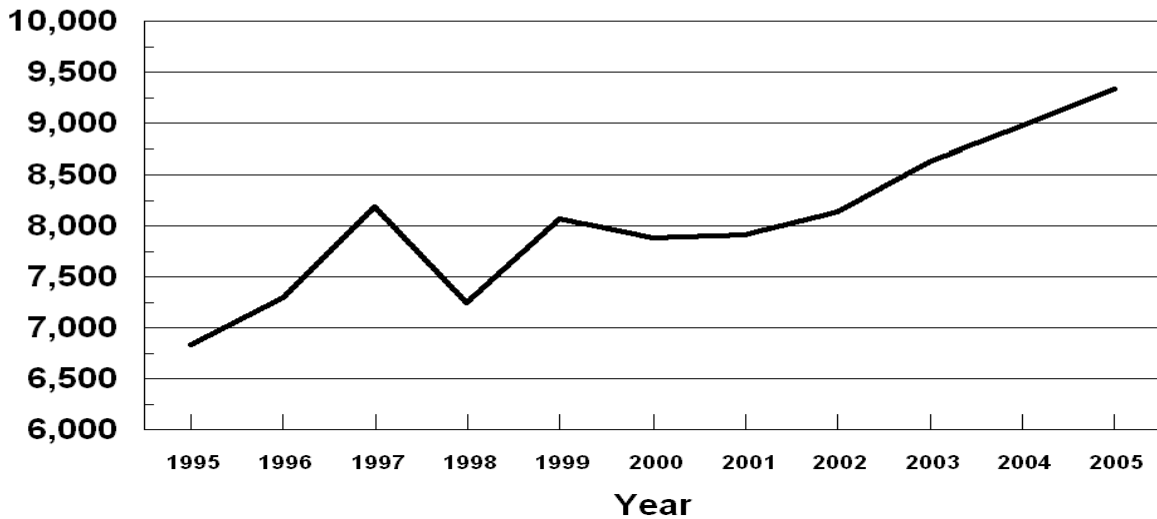
## U.S. Noncitrus Fruits Utilized Production 1995 - 2005

1,000 Tons Fresh Equivalent



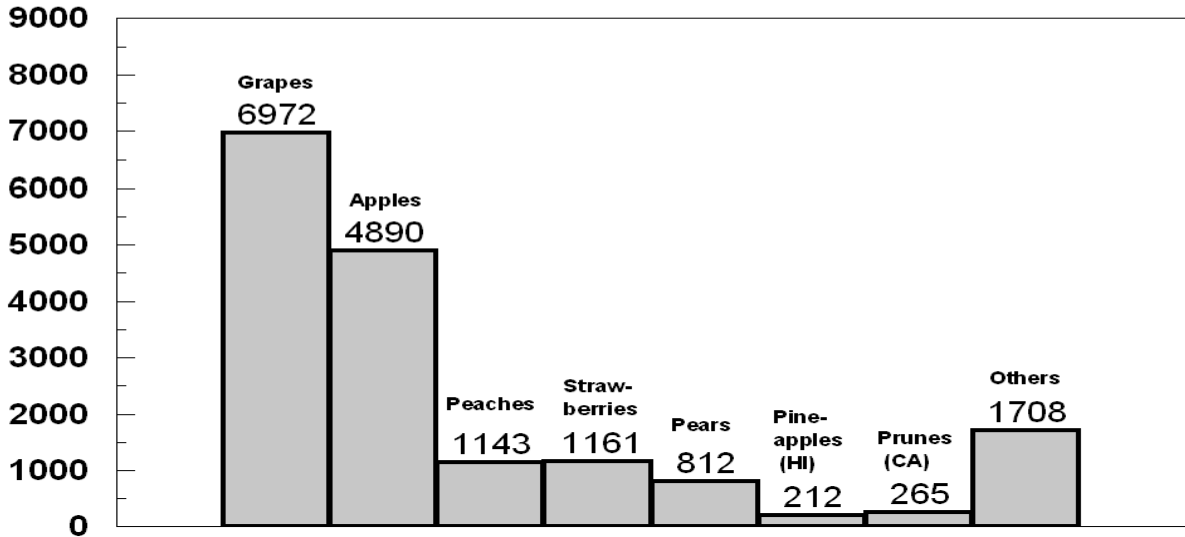
## U.S. Noncitrus Fruits Value of Utilized Production 1995 - 2005

Million Dollars



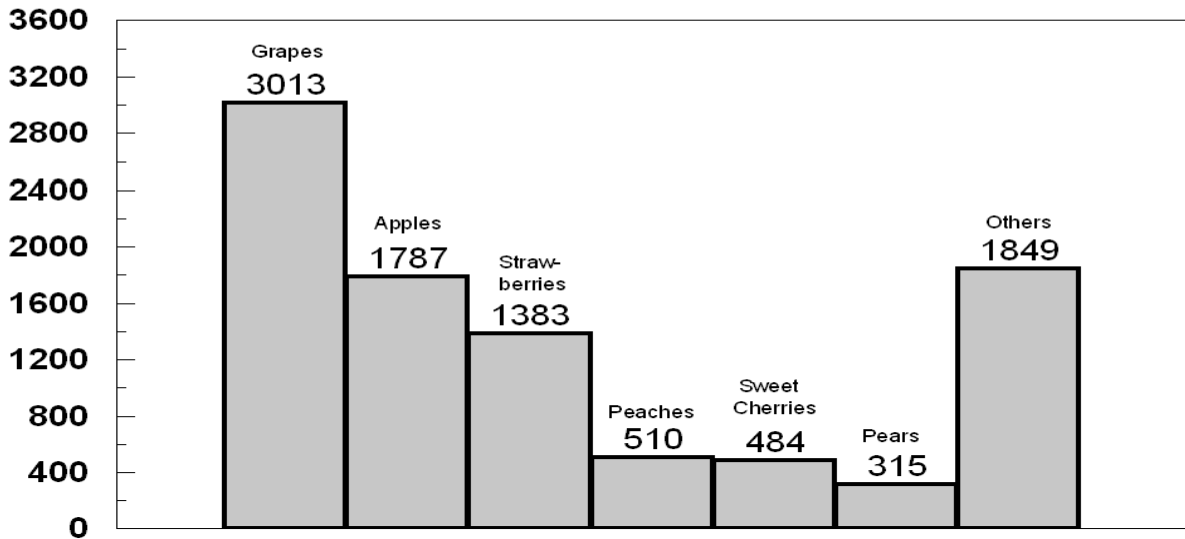
## U.S. Noncitrus Fruits Utilized Production by Major Fruit, 2005

(000) Tons Fresh Equivalent



## U.S. Noncitrus Fruits Value of Utilized Production by Major Fruit, 2005

Million Dollars



**Apples, Commercial: Bearing Acreage and Yield  
by State and United States, 2003-2005**

State	Bearing Acreage			Yield per Acre <sup>1</sup>		
	2003	2004	2005	2003	2004	2005
	<i>Acres</i>	<i>Acres</i>	<i>Acres</i>	<i>Pounds</i>	<i>Pounds</i>	<i>Pounds</i>
AZ	1,200	1,200	1,100	5,830	30,800	20,200
AR <sup>2</sup>	600	550		4,000	3,450	
CA	28,000	26,000	25,000	16,100	13,700	14,800
CO	1,700	1,600	1,500	12,900	17,500	20,700
CT	2,200	2,200	2,200	9,770	8,860	6,820
GA	1,200	1,200	1,300	10,800	10,000	10,800
ID	3,400	3,400	3,400	20,600	26,500	23,500
IL	4,000	4,000	4,000	13,100	14,100	12,300
IN	4,000	4,000	4,000	12,800	15,000	12,500
IA	1,600	1,600	1,600	3,750	3,310	1,310
KS <sup>2</sup>	300	290		11,300	9,660	
KY	950	920	860	7,890	8,370	6,400
ME	3,500	3,500	3,500	12,600	13,400	9,000
MD	2,400	2,400	2,400	16,700	14,200	17,100
MA	4,100	4,100	4,100	10,400	10,200	6,950
MI	41,500	40,500	40,500	21,400	18,000	19,500
MN	2,600	2,500	2,400	10,400	10,000	9,170
MO	3,900	3,900	4,100	10,300	12,300	12,000
NH	2,100	2,100	2,100	12,400	14,500	8,570
NJ	2,400	2,300	2,300	16,700	17,400	19,600
NM <sup>2</sup>	1,500	1,500		1,330	3,070	
NY	45,000	45,000	45,000	23,800	28,400	23,100
NC	7,000	7,000	6,800	19,300	22,100	21,300
OH	7,600	7,300	7,300	11,800	12,300	14,000
OR	6,500	6,500	6,500	20,500	25,100	21,500
PA	22,000	22,100	21,800	20,100	18,300	20,900
RI	300	300	300	7,670	7,330	6,000
SC	1,200	1,000	700	5,000	6,000	5,710
TN	1,000	900	900	12,000	12,200	9,440
UT	2,000	2,000	2,000	14,000	16,000	19,000
VT	2,700	2,700	2,700	15,600	15,400	12,000
VA	15,000	15,000	15,000	18,000	20,000	20,000
WA	155,000	155,000	155,000	29,400	39,700	37,400
WV	6,000	5,000	5,000	14,500	16,200	17,400
WI	6,000	6,000	5,800	11,300	9,500	8,970
US	390,450	385,560	381,160	22,500	27,100	25,900

<sup>1</sup> Yield is based on total production, which includes unharvested production and fruit harvested but not sold due to market conditions.

<sup>2</sup> Estimates discontinued in 2005.

**Apples, Commercial: Total and Utilized Production  
by State and United States, 2003-2005**

State	Total Production			Utilized Production		
	2003	2004	2005	2003	2004	2005
	<i>Million Pounds</i>	<i>Million Pounds</i>	<i>Million Pounds</i>	<i>Million Pounds</i>	<i>Million Pounds</i>	<i>Million Pounds</i>
AZ	7.0	37.0	22.2	7.0	37.0	22.0
AR <sup>1</sup>	2.4	1.9		2.3	1.1	
CA	450.0	355.0	370.0	440.0	355.0	370.0
CO	22.0	28.0	31.0	21.0	27.0	27.0
CT	21.5	19.5	15.0	20.0	18.5	14.5
GA	13.0	12.0	14.0	12.9	12.0	14.0
ID	70.0	90.0	80.0	70.0	90.0	80.0
IL	52.5	56.5	49.0	45.9	51.3	38.5
IN	51.0	60.0	50.0	48.0	58.0	37.5
IA	6.0	5.3	2.1	4.7	4.8	1.9
KS <sup>1</sup>	3.4	2.8		2.6	2.2	
KY	7.5	7.7	5.5	7.1	7.0	4.7
ME	44.0	47.0	31.5	40.0	43.0	30.0
MD	40.0	34.1	41.0	38.4	33.0	40.8
MA	42.5	42.0	28.5	37.0	37.0	26.0
MI	890.0	730.0	790.0	890.0	730.0	790.0
MN	27.0	25.0	22.0	19.8	19.9	16.0
MO	40.0	48.0	49.0	40.0	47.0	47.0
NH	26.0	30.5	18.0	24.5	28.0	17.0
NJ	40.0	40.0	45.0	40.0	38.0	45.0
NM <sup>1</sup>	2.0	4.6		1.8	2.5	
NY	1,070.0	1,280.0	1,040.0	1,060.0	1,280.0	1,020.0
NC	135.0	155.0	145.0	130.0	132.0	135.0
OH	90.0	90.0	102.0	88.0	90.0	101.0
OR	133.0	163.0	140.0	132.0	160.0	140.0
PA	442.0	405.0	455.0	442.0	400.0	450.0
RI	2.3	2.2	1.8	2.0	2.1	1.6
SC	6.0	6.0	4.0	4.5	3.0	2.5
TN	12.0	11.0	8.5	11.5	10.5	7.5
UT	28.0	32.0	38.0	27.5	31.4	37.1
VT	42.0	41.5	32.5	37.5	38.0	30.0
VA	270.0	300.0	300.0	262.0	297.0	297.0
WA	4,550.0	6,150.0	5,800.0	4,550.0	6,150.0	5,800.0
WV	87.0	81.0	87.0	85.0	80.0	86.0
WI	68.0	57.0	52.0	58.0	55.0	49.5
US	8,793.1	10,450.6	9,869.6	8,703.0	10,371.3	9,779.1

<sup>1</sup> Estimates discontinued in 2005.

**Apples, Commercial: Price and Value  
by State and United States, 2003-2005**

State	Price per Pound			Value of Utilized Production		
	2003	2004	2005	2003	2004	2005
	<i>Dollars</i>	<i>Dollars</i>	<i>Dollars</i>	<i>1,000 Dollars</i>	<i>1,000 Dollars</i>	<i>1,000 Dollars</i>
AZ	0.078	0.153	0.240	549	5,656	5,275
AR <sup>1</sup>	0.235	0.355		540	390	
CA	0.178	0.149	0.220	78,190	52,975	81,555
CO	0.185	0.154	0.235	3,878	4,171	6,342
CT	0.371	0.395	0.391	7,420	7,310	5,670
GA	0.106	0.228	0.236	1,368	2,740	3,310
ID	0.202	0.118	0.187	14,133	10,646	14,920
IL	0.291	0.237	0.390	13,348	12,182	15,006
IN	0.263	0.219	0.220	12,609	12,686	8,242
IA	0.424	0.466	0.462	1,991	2,235	877
KS <sup>1</sup>	0.273	0.276		711	607	
KY	0.327	0.368	0.346	2,322	2,573	1,628
ME	0.298	0.320	0.308	11,935	13,740	9,240
MD	0.156	0.136	0.151	6,008	4,486	6,155
MA	0.346	0.381	0.383	12,803	14,108	9,960
MI	0.117	0.123	0.127	103,925	89,780	100,150
MN	0.436	0.468	0.535	8,624	9,307	8,563
MO	0.208	0.164	0.165	8,311	7,713	7,744
NH	0.279	0.301	0.332	6,835	8,420	5,640
NJ	0.146	0.151	0.170	5,840	5,740	7,653
NM <sup>1</sup>	0.307	0.418		553	1,045	
NY	0.145	0.151	0.183	154,030	193,560	186,950
NC	0.132	0.132	0.126	17,103	17,420	17,064
OH	0.274	0.276	0.282	24,130	24,831	28,474
OR	0.175	0.163	0.141	23,066	26,057	19,724
PA	0.103	0.101	0.113	45,425	40,353	50,738
RI	0.393	0.480	0.445	785	1,008	712
SC	0.219	0.108	0.172	985	323	430
TN	0.252	0.263	0.268	2,903	2,765	2,012
UT	0.230	0.268	0.280	6,317	8,415	10,379
VT	0.266	0.225	0.264	9,958	8,550	7,920
VA	0.096	0.149	0.113	25,066	44,226	33,465
WA	0.259	0.160	0.190	1,178,020	986,215	1,103,400
WV	0.097	0.091	0.091	8,214	7,250	7,804
WI	0.334	0.336	0.397	19,345	18,500	19,672
US	0.209	0.159	0.183	1,817,240	1,647,983	1,786,674

<sup>1</sup> Estimates discontinued in 2005.

**Apples, Commercial: Fresh Market Utilization and Price  
by State and United States, 2003-2005 <sup>1</sup>**

State	Fresh Market					
	Quantity			Price per Pound <sup>2</sup>		
	2003	2004	2005	2003	2004	2005
	<i>Million Pounds</i>	<i>Million Pounds</i>	<i>Million Pounds</i>	<i>Dollars</i>	<i>Dollars</i>	<i>Dollars</i>
AZ	0.1	3.0		0.700	0.560	
CA	220.0	165.0		0.266	0.226	
CO	13.0	18.0		0.261	0.197	
CT	16.0	15.5		0.450	0.460	
ID	45.0	45.0		0.290	0.210	
IN	35.0	39.0		0.340	0.293	
KY	7.0	6.7		0.330	0.380	
ME	33.0	35.0		0.350	0.380	
MD	16.7	10.5		0.258	0.265	
MA	29.5	31.5		0.420	0.440	
MI	310.0	240.0		0.195	0.202	
MO	20.0	33.0		0.355	0.211	
NH	14.5	18.0		0.430	0.440	
NJ	24.0	28.0		0.195	0.180	
NM <sup>3</sup>	1.8	2.5		0.307	0.418	
NY	510.0	660.0		0.230	0.228	
NC	40.0	47.0		0.256	0.229	
OH	78.0	78.1		0.300	0.308	
OR	90.0	110.0		0.234	0.222	
PA	95.0	110.0		0.213	0.172	
SC	3.0	1.2		0.269	0.199	
UT	23.0	29.2		0.265	0.284	
VT	32.0	33.0		0.300	0.250	
VA	52.0	132.0		0.221	0.250	
WA	3,600.0	4,600.0		0.314	0.206	
WV	16.0	15.0		0.215	0.172	
WI	48.0	47.0		0.390	0.380	
Oth Sts	89.2	89.8		0.327	0.335	
US	5,461.8	6,643.0		0.294	0.218	

<sup>1</sup> Estimates for 2005 will be published on July 6, 2006.

<sup>2</sup> Equivalent packinghouse door returns for CA, MI, NY, and WA; price at first sale for all other States.

<sup>3</sup> Estimates discontinued in 2005.

**Apples, Commercial: Value of Fresh Market Production  
by State and United States, 2003-2005 <sup>1</sup>**

State	Fresh Market		
	Value of Production		
	2003	2004	2005
	<i>1,000 Dollars</i>	<i>1,000 Dollars</i>	<i>1,000 Dollars</i>
AZ	70	1,680	
CA	58,520	37,290	
CO	3,393	3,546	
CT	7,200	7,130	
ID	13,050	9,450	
IN	11,900	11,427	
KY	2,310	2,546	
ME	11,550	13,300	
MD	4,309	2,783	
MA	12,390	13,860	
MI	60,450	48,480	
MO	7,100	6,963	
NH	6,235	7,920	
NJ	4,680	5,040	
NM <sup>2</sup>	553	1,045	
NY	117,300	150,480	
NC	10,240	10,763	
OH	23,400	24,055	
OR	21,060	24,420	
PA	20,235	18,920	
SC	807	239	
UT	6,095	8,293	
VT	9,600	8,250	
VA	11,492	33,000	
WA	1,130,400	947,600	
WV	3,440	2,580	
WI	18,720	17,860	
Oth Sts	29,131	30,108	
US	1,605,630	1,449,028	

<sup>1</sup> Estimates for 2005 will be published on July 6, 2006.

<sup>2</sup> Estimates discontinued in 2005.



**Apples, Commercial: Processed Utilization and Price  
by State and United States, 2003-2005 <sup>1</sup>**

State	Processed					
	Quantity			Price per Ton		
	2003	2004	2005	2003	2004	2005
	<i>Million Pounds</i>	<i>Million Pounds</i>	<i>Million Pounds</i>	<i>Dollars</i>	<i>Dollars</i>	<i>Dollars</i>
AZ	6.9	34.0		139.00	234.00	
CA	220.0	190.0		179.00	165.00	
CO	8.0	9.0		121.00	139.00	
CT	4.0	3.0		110.00	120.00	
ID	25.0	45.0		86.60	53.20	
IN	13.0	19.0		109.00	133.00	
KY	0.1	0.3		240.00	180.00	
ME	7.0	8.0		110.00	110.00	
MD	21.7	22.5		157.00	151.00	
MA	7.5	5.5		110.00	90.20	
MI	580.0	490.0		150.00	169.00	
MO	20.0	14.0		121.00	107.00	
NH	10.0	10.0		120.00	100.00	
NJ	16.0	10.0		145.00	140.00	
NY	550.0	620.0		134.00	139.00	
NC	90.0	85.0		153.00	157.00	
OH	10.0	11.9		146.00	130.00	
OR	42.0	50.0		95.50	65.50	
PA	347.0	290.0		145.00	148.00	
SC	1.5	1.8		237.00	93.30	
UT	4.5	2.2		98.70	111.00	
VT	5.5	5.0		130.00	120.00	
VA	210.0	165.0		129.00	136.00	
WA	950.0	1,550.0		100.00	49.80	
WV	69.0	65.0		138.00	144.00	
WI	10.0	8.0		125.00	160.00	
Oth Sts	12.5	14.1		182.00	160.00	
US	3,241.2	3,728.3		131.00	107.00	

<sup>1</sup> Estimates for 2005 will be published on July 6, 2006.

**Apples, Commercial: Value of Processed Production  
by State and United States, 2003-2005 <sup>1</sup>**

State	Processed		
	Value of Production		
	2003	2004	2005
	<i>1,000 Dollars</i>	<i>1,000 Dollars</i>	<i>1,000 Dollars</i>
AZ	479	3,976	
CA	19,670	15,685	
CO	485	625	
CT	220	180	
ID	1,083	1,196	
IN	709	1,259	
KY	12	27	
ME	385	440	
MD	1,699	1,703	
MA	413	248	
MI	43,475	41,300	
MO	1,211	750	
NH	600	500	
NJ	1,160	700	
NY	36,730	43,080	
NC	6,863	6,657	
OH	730	776	
OR	2,006	1,637	
PA	25,190	21,433	
SC	178	84	
UT	222	122	
VT	358	300	
VA	13,574	11,226	
WA	47,620	38,615	
WV	4,774	4,670	
WI	625	640	
Oth Sts	1,139	1,126	
US	211,610	198,955	

<sup>1</sup> Estimates for 2005 will be published on July 6, 2006.

**Apples, Commercial: Processed Utilization, Use, and Price  
by State and United States, 2003-2005<sup>1</sup>**

Use and State	Processed Utilization					
	Quantity			Price per Ton		
	2003	2004	2005	2003	2004	2005
	<i>Million Pounds</i>	<i>Million Pounds</i>	<i>Million Pounds</i>	<i>Dollars</i>	<i>Dollars</i>	<i>Dollars</i>
Canned						
CA <sup>2</sup>	16.0			142.00		
MI	190.0	210.0		175.00	180.00	
NY	270.0	340.0		150.00	156.00	
NC	54.0	59.0		161.00	175.00	
PA	263.0	230.0		160.00	160.00	
VA	156.0	125.0		140.00	151.00	
WA	190.0	190.0		142.00	74.00	
WV	48.0	47.0		154.00	157.00	
Oth Sts	48.6	56.9		162.00	162.00	
US	1,235.6	1,257.9		154.00	149.00	
Juice & Cider						
CA	190.0	170.0		178.00	164.00	
MI	200.0	115.0		95.00	110.00	
NY	200.0	200.0		104.00	96.00	
NC	34.0	12.0		137.00	103.00	
OR	22.0	27.0		65.00	37.00	
PA	75.0	52.0		100.00	100.00	
VA	47.0	24.0		101.00	99.00	
WA	530.0	1,110.0		77.00	38.00	
WV	14.0	13.0		104.00	104.00	
Oth Sts	122.5	156.6		110.00	123.00	
US	1,434.5	1,879.6		103.00	70.40	

<sup>1</sup> Estimates for 2005 will be published on July 6, 2006.

<sup>2</sup> 2004 data included in Other States to avoid disclosure of individual operations.

**Apples, Commercial: Processed Utilization, Use, and Price  
by State and United States, 2003-2005<sup>1</sup>**

Use and State	Processed Utilization					
	Quantity			Price per Ton		
	2003	2004	2005	2003	2004	2005
	<i>Million Pounds</i>	<i>Million Pounds</i>	<i>Million Pounds</i>	<i>Dollars</i>	<i>Dollars</i>	<i>Dollars</i>
Frozen						
MI <sup>2</sup>	180.0			185.00		
NY	50.0	50.0		164.00	228.00	
Oth Sts	52.8	206.0		141.00	160.00	
US	282.8	256.0		173.00	173.00	
Dried						
US	182.2	201.8		107.00	73.70	
Fresh Slices						
US <sup>3</sup>		54.0			186.00	
Other <sup>4</sup>						
MI	10.0	8.0		140.00	180.00	
NY	30.0	30.0		132.00	84.00	
Oth Sts	66.1	41.0		164.00	118.00	
US	106.1	79.0		152.00	112.00	

<sup>1</sup> Estimates for 2005 will be published on July 6, 2006.

<sup>2</sup> 2004 data included in Other States to avoid disclosure of individual operations.

<sup>3</sup> Estimates initiated July 2005.

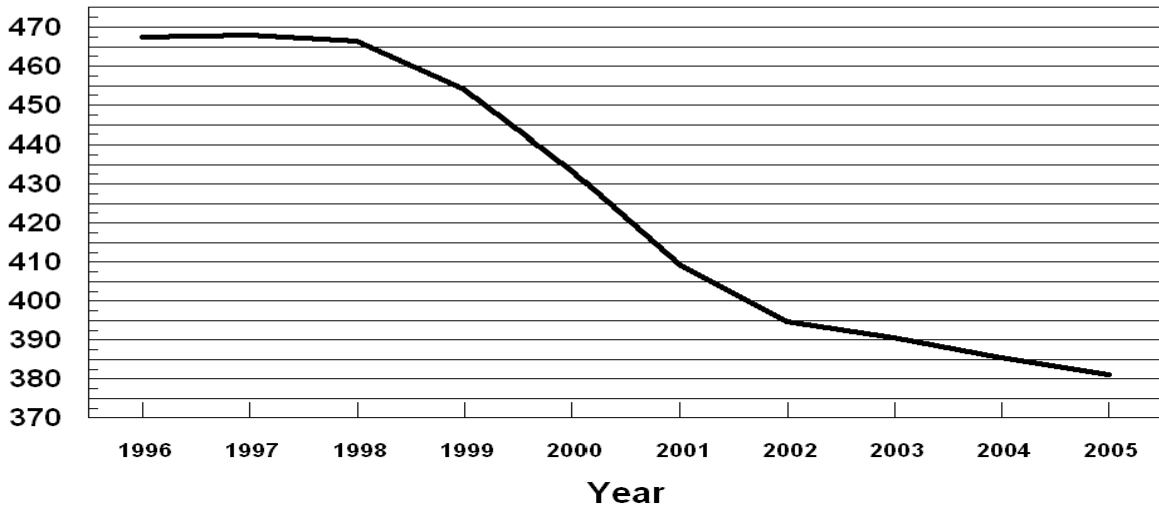
<sup>4</sup> Includes vinegar, wine, and fresh slices for pie making.

## U. S. Apples

### Bearing Acres

1996 - 2005

(000) Acres

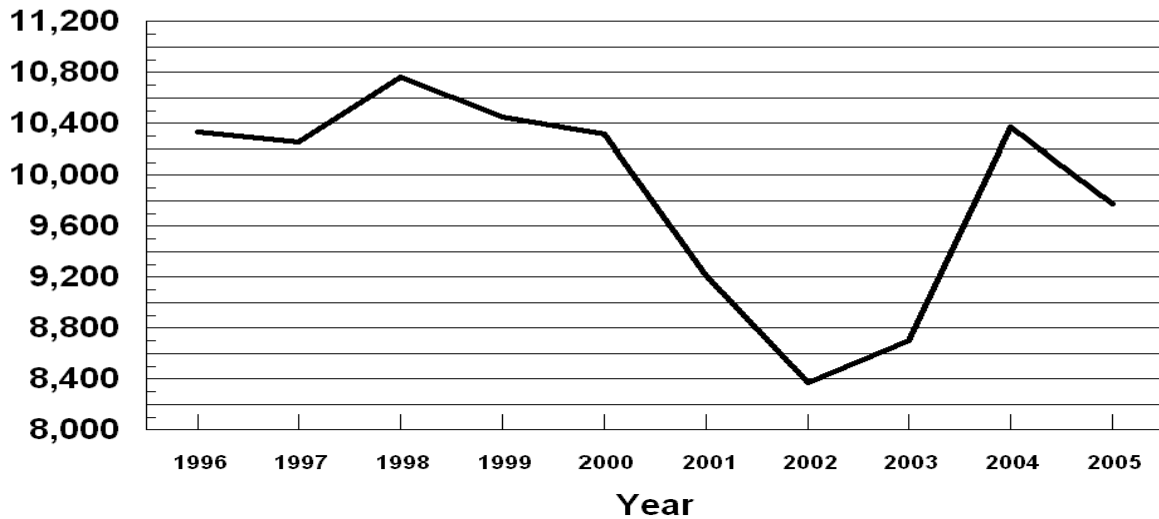


## U. S. Apples

### Utilized Production

1996 - 2005

Million Pounds



**Miscellaneous Fruits: Bearing Acreage, Yield, Production, and Utilization  
by State and United States, 2003-2005**

Crop, State, and Season	Bearing Acreage	Yield Per Acre <sup>1</sup>	Production		Utilization	
			Total	Utilized	Fresh	Processed
	<i>Acres</i>	<i>Tons</i>	<i>Tons</i>	<i>Tons</i>	<i>Tons</i>	<i>Tons</i>
Apricots <sup>2</sup>						
CA						
2003	16,500	5.61	92,500	92,500	22,000	70,500
2004	16,000	5.88	94,000	85,500	17,900	67,600
2005	14,500	5.21	75,500	70,500	18,500	52,000
UT						
2003			180	160		
2004			330	290		
2005			250	245		
WA						
2003			4,900	4,900		
2004			6,800	6,800		
2005			5,600	5,600		
US						
2003	17,840	5.47	97,580	97,560	26,250	71,310
2004	17,340	5.83	101,130	92,590	23,650	68,940
2005	15,840	5.14	81,350	76,345	23,545	52,800
Avocados <sup>3</sup>						
CA						
2003-04	60,500	3.57	216,000	216,000	216,000	
2004-05	62,000	2.44	151,000	151,000	151,000	
2005-06						
FL						
2003-04	6,100	2.79	17,000	17,000	17,000	
2004-05	6,400	4.38	28,000	28,000	28,000	
2005-06						
HI						
2003-04	300	1.27	380	380	380	
2004-05	270	1.37	370	370	370	
2005-06						
US						
2003-04	66,900	3.49	233,380	233,380	233,380	
2004-05	68,670	2.61	179,370	179,370	179,370	
2005-06						
Dates						
CA						
2003	4,700	3.81	17,900	17,900	17,900	
2004	4,700	3.64	17,100	17,100	17,100	
2005	4,600	3.61	16,600	16,600	16,600	

<sup>1</sup> Yield is based on total production.

<sup>2</sup> Missing data not published to avoid disclosure of individual operations.

<sup>3</sup> Estimates for 2005-06 will be published on July 6, 2006.

**Miscellaneous Fruits: Price and Value by State  
and United States, 2003-2005<sup>1</sup>**

Crop, State, and Season	Price per Ton			Value of Production		
	Fresh	Processed	All	Fresh	Processed	Total
	<i>Dollars</i>	<i>Dollars</i>	<i>Dollars</i>	<i>1,000 Dollars</i>	<i>1,000 Dollars</i>	<i>1,000 Dollars</i>
Apricots <sup>2</sup>						
CA						
2003	492.00	264.00	316.00	10,824	18,397	29,221
2004	538.00	283.00	334.00	9,630	18,945	28,575
2005	1,100.00	271.00	495.00	20,350	14,554	34,904
UT						
2003			588.00			94
2004			610.00			177
2005			959.00			235
WA						
2003			1,100.00			5,387
2004			921.00			6,260
2005			997.00			5,584
US						
2003	618.00	262.00	356.00	16,234	18,468	34,702
2004	672.00	279.00	378.00	15,897	19,115	35,012
2005	1,110.00	267.00	533.00	26,105	14,618	40,723
Avocados <sup>3</sup>						
CA						
2003-04	1,760.00		1,760.00	380,160		380,160
2004-05	1,840.00		1,840.00	277,840		277,840
2005-06						
FL						
2003-04	808.00		808.00	13,736		13,736
2004-05	516.00		516.00	14,448		14,448
2005-06						
HI						
2003-04	1,240.00		1,240.00	471		471
2004-05	1,260.00		1,260.00	466		466
2005-06						
US						
2003-04	1,690.00		1,690.00	394,367		394,367
2004-05	1,630.00		1,630.00	292,754		292,754
2005-06						
Dates						
CA						
2003	2,300.00		2,300.00	41,170		41,170
2004	2,260.00		2,260.00	38,646		38,646
2005	2,000.00		2,000.00	33,200		33,200

<sup>1</sup> Missing data not published to avoid disclosure of individual operations.

<sup>2</sup> Apricot processed price excludes dried. Processing value includes dried.

<sup>3</sup> Estimates for 2005-06 will be published on July 6, 2006.

**Miscellaneous Fruits: Bearing Acreage, Yield, Production, and Utilization  
by State and United States, 2003-2005 <sup>1</sup>**

Crop, State, and Season	Bearing Acreage	Yield Per Acre <sup>2</sup>	Production		Utilization	
			Total	Utilized	Fresh	Processed
	<i>Acres</i>	<i>Tons</i>	<i>Tons</i>	<i>Tons</i>	<i>Tons</i>	<i>Tons</i>
<b>Figs <sup>3</sup></b>						
CA						
2003	13,000	3.73	48,500	48,500	2,900	45,600
2004	12,800	3.99	51,100	51,100	4,300	46,800
2005	12,300	4.14	50,900	50,900	4,700	46,200
<b>Kiwifruit</b>						
CA						
2003	4,500	5.64	25,400	24,000	22,000	2,000
2004	4,500	5.93	26,700	24,700	22,500	2,200
2005	4,500	9.24	41,600	38,300	34,900	3,400
<b>Nectarines <sup>4</sup></b>						
CA						
2003	36,500	7.48	273,000	273,000	273,000	
2004	36,500	7.37	269,000	252,000	252,000	
2005	36,500	6.55	239,000	239,000	239,000	
WA <sup>5</sup>						
2003						
2004						
2005	1,200	8.67	10,400	10,400	10,400	
US						
2003	36,500	7.48	273,000	273,000	273,000	
2004	36,500	7.37	269,000	252,000	252,000	
2005	37,700	6.62	249,400	249,400	249,400	
<b>Olives</b>						
CA						
2003	36,000	3.28	118,000	118,000	500	117,500
2004	32,000	3.25	104,000	104,000	500	103,500
2005	32,000	4.34	139,000	139,000	500	138,500
<b>Plums</b>						
CA						
2003	36,000	5.81	209,000	209,000		
2004 <sup>6</sup>	36,000	4.33	156,000	144,000		
2005 <sup>6</sup>	36,000	4.75	171,000	171,000		

<sup>1</sup> Missing data not published to avoid disclosure of individual operations.

<sup>2</sup> Yield is based on total production.

<sup>3</sup> Small quantities of canned figs are included in fresh to avoid disclosure of individual operations.

<sup>4</sup> Small quantities of processed nectarines are included in fresh to avoid disclosure of individual operations.

<sup>5</sup> Washington estimates began in 2005.

<sup>6</sup> Small quantities of processed plums are included in fresh to avoid disclosure of individual operations.



**Miscellaneous Fruits: Price and Value by State  
and United States, 2003-2005<sup>1</sup>**

Crop, State, and Season	Price per Ton			Value of Production		
	Fresh	Processed	All	Fresh	Processed	Total
	<i>Dollars</i>	<i>Dollars</i>	<i>Dollars</i>	<i>1,000 Dollars</i>	<i>1,000 Dollars</i>	<i>1,000 Dollars</i>
Figs						
CA						
2003			317.00			15,373
2004			396.00			20,214
2005 <sup>2</sup>						
Kiwifruit						
CA						
2003			853.00			20,472
2004			809.00			19,977
2005 <sup>2</sup>						
Nectarines <sup>3</sup>						
CA						
2003	436.00		436.00	119,028		119,028
2004	342.00		342.00	86,184		86,184
2005	519.00		519.00	124,041		124,041
WA <sup>4</sup>						
2003						
2004						
2005	570.00		570.00	5,928		5,928
US						
2003	436.00		436.00	119,028		119,028
2004	342.00		342.00	86,184		86,184
2005	521.00		521.00	129,969		129,969
Olives						
CA						
2003	500.00	409.00	409.00	250	48,039	48,289
2004	500.00	571.00	571.00	250	59,129	59,379
2005	500.00	548.00	548.00	250	75,876	76,126
Plums						
CA						
2003			418.00			87,362
2004 <sup>5</sup>			516.00			74,347
2005 <sup>5</sup>			551.00			94,163

<sup>1</sup> Missing data not published to avoid disclosure of individual operations.

<sup>2</sup> Estimates for 2005 will be published on July 6, 2006.

<sup>3</sup> Small quantities of processed nectarines are included in fresh to avoid disclosure of individual operations.

<sup>4</sup> Washington estimates began in 2005.

<sup>5</sup> Small quantities of processed plums are included in fresh to avoid disclosure of individual operations.

**Miscellaneous Fruits: Bearing Acreage, Yield, Production, and Utilization  
by State and United States, 2003-2005<sup>1</sup>**

Crop, State, and Season	Bearing Acreage	Yield Per Acre <sup>2</sup>	Production		Utilization	
			Total	Utilized	Fresh	Processed
	<i>Acres</i>	<i>Tons</i>	<i>Tons</i>	<i>Tons</i>	<i>Tons</i>	<i>Tons</i>
Prunes & Plums						
ID						
2003	510	4.90	2,500	2,480		
2004	510	7.84	4,000	3,920		
2005	510	3.92	2,000	1,950		
MI						
2003	800	4.50	3,600	3,600	1,100	2,500
2004	750	3.33	2,500	2,000	350	1,650
2005	750	2.67	2,000	2,000	450	1,550
OR						
2003	1,900	2.89	5,500	4,100	1,500	2,600
2004	1,900	6.84	13,000	7,500	3,000	4,500
2005	1,800	0.83	1,500	1,500	1,200	300
WA						
2003	800	5.88	4,700	4,700		
2004	800	6.88	5,500	5,500		
2005	800	4.00	3,200	3,200		
4-State Total						
2003	4,010	4.06	16,300	14,880	7,700	7,180
2004	3,960	6.31	25,000	18,920	10,350	8,570
2005	3,860	2.25	8,700	8,650	5,500	3,150
Prunes (Dried Basis)						
CA						
2003	72,000	2.51	181,000	168,000		168,000
2004	70,000	0.70	49,000	48,000		48,000
2005	67,000	1.34	90,000	87,000		87,000

<sup>1</sup> Missing data not published to avoid disclosure of individual operations.

<sup>2</sup> Yield is based on total production.

**Miscellaneous Fruits: Price and Value by State  
and United States, 2003-2005<sup>1</sup>**

Crop, State, and Season	Price per Ton			Value of Production		
	Fresh	Processed	All	Fresh	Processed	Total
	<i>Dollars</i>	<i>Dollars</i>	<i>Dollars</i>	<i>1,000 Dollars</i>	<i>1,000 Dollars</i>	<i>1,000 Dollars</i>
Prunes & Plums						
ID						
2003			518.00			1,284
2004			613.00			2,401
2005			999.00			1,948
MI						
2003	480.00	300.00	355.00	528	750	1,278
2004	769.00	264.00	353.00	269	436	705
2005	760.00	250.00	365.00	342	388	730
OR						
2003	385.00	206.00	272.00	578	536	1,114
2004	537.00	228.00	352.00	1,611	1,026	2,637
2005	445.00	300.00	416.00	534	90	624
WA						
2003			337.00			1,584
2004			193.00			1,059
2005			528.00			1,691
4-State Total						
2003	446.00	254.00	353.00	3,434	1,826	5,260
2004	468.00	228.00	360.00	4,847	1,955	6,802
2005	759.00	261.00	577.00	4,172	821	4,993
Prunes (Dried Basis)						
CA						
2003		772.00	772.00		129,696	129,696
2004		1,500.00	1,500.00		72,000	72,000
2005		1,500.00	1,500.00		130,500	130,500

<sup>1</sup> Missing data not published to avoid disclosure of individual operations.

**Miscellaneous Fruits: Processed Utilization, Use, and Price  
by State and United States, 2003-2005<sup>1</sup>**

Crop, Use, and State	Processed Utilization					
	Quantity			Price per Ton		
	2003	2004	2005	2003	2004	2005
	<i>Tons</i>	<i>Tons</i>	<i>Tons</i>	<i>Dollars</i>	<i>Dollars</i>	<i>Dollars</i>
Apricots						
Canned						
CA	30,000		23,500	298.00		285.00
Juice						
CA	9,200			210.00		
Frozen						
CA	11,000	9,700		313.00	308.00	
Dried (Fresh Basis)						
CA	6,800	11,800	11,500	233.00	269.00	312.00
Figs <sup>2</sup>						
Dried (Fresh Basis)						
CA	45,600	46,800	46,200	276.00	299.00	
Olives						
Canned						
CA	96,000	74,400	100,000	458.00	701.00	645.00
Crushed for Oil						
CA	7,500	8,000	11,000	238.00	361.00	527.00
Limited						
CA	10,500	16,100	21,200	215.00	252.00	262.00
Undersized						
CA	3,500	5,000	6,300	8.00	6.00	4.00
Prunes & Plums						
Canned						
4-State Total	3,100	3,140	2,150	255.00	196.00	254.00
Frozen						
4-State Total	1,300	1,040	420	339.00	289.00	269.00
Dried & Other						
4-State Total	2,780	4,390	580	214.00	237.00	279.00

<sup>1</sup> Missing data not published to avoid disclosure of individual operations.

<sup>2</sup> Price estimates for 2005 will be published on July 6, 2006.

**Olives: Variety and Total Production, California  
2003-2005**

Variety	Total Production		
	2003	2004	2005
	<i>Tons</i>	<i>Tons</i>	<i>Tons</i>
Manzanillo	102,000	78,000	117,000
Sevillano	13,000	24,000	19,000
All Other <sup>1</sup>	3,000	2,000	3,000
Total	118,000	104,000	139,000

<sup>1</sup> Includes production for varieties that were or will be used for canned, oil, and other specialty products.

**California Dry Fruits: Production, Use, and Price, 2003-2005**

Crop	Quantity			Price per Ton		
	2003	2004	2005	2003	2004	2005
	<i>Tons</i>	<i>Tons</i>	<i>Tons</i>	<i>Dollars</i>	<i>Dollars</i>	<i>Dollars</i>
<b>Fresh Basis</b>						
Apricots	6,800	11,800	11,500	233.00	269.00	312.00
Figs <sup>1</sup>	45,600	46,800	46,200	276.00	299.00	
Grapes						
Raisin	1,578,000	1,094,000	1,310,000	124.00	303.00	196.00
Table	19,000	13,000	15,000	167.00	289.00	240.00
Peaches						
Freestone	10,150	10,400	12,700	47.00	32.00	46.00
Pears						
Bartlett	4,000	4,000	2,000	206.00	160.00	240.00
Prunes	536,000	141,000	265,000	242.00	511.00	492.00
<b>Dried Basis</b>						
Apricots <sup>2</sup>	900	1,630	1,490	1,760.00	1,950.00	2,410.00
Figs <sup>1 3</sup>						
Standard	13,300	13,700	13,500	938.00	1,010.00	
Sub-Std.	1,900	1,900	1,900	60.00	60.00	
Grapes						
Raisin <sup>4 5</sup>	347,700	274,000	273,000	563.00	1,210.00	940.00
Table <sup>6</sup>	4,200	3,300	3,100	757.00	1,140.00	1,160.00
Peaches <sup>7</sup>						
Freestone	1,070	870	1,160	446.00	382.00	504.00
Pears <sup>8</sup>						
Bartlett	610	620	300	1,350.00	1,030.00	1,600.00
Prunes <sup>9</sup>	168,000	48,000	87,000	772.00	1,500.00	1,500.00

<sup>1</sup> Price estimates for 2005 will be published on July 6, 2006.

<sup>2</sup> Dried basis 1 ton of apricots equivalent to 7.56 tons for 2003, 7.24 tons for 2004, and 7.72 tons for 2005.

<sup>3</sup> Dried basis 1 ton of all figs equivalent to 3.00 tons for 2003, 2004, and 2005.

<sup>4</sup> Includes substandard raisins diverted to other uses.

<sup>5</sup> Dried basis 1 ton of raisins equivalent to 4.54 tons for 2003, 3.99 tons for 2004, and 4.80 tons for 2005.

<sup>6</sup> Dried basis 1 ton of table type raisins equivalent to 4.52 tons for 2003, 3.94 tons for 2004, and 4.84 tons for 2005.

<sup>7</sup> Dried basis 1 ton of Freestone peaches equivalent to 9.49 tons for 2003, 11.95 tons for 2004, and 10.95 tons for 2005.

<sup>8</sup> Dried basis 1 ton of Bartlett pears equivalent to 6.56 tons for 2003, 6.45 tons for 2004, and 6.67 tons for 2005.

<sup>9</sup> Dried basis 1 ton of dried prunes equivalent to 3.19 tons for 2003, 2.94 tons for 2004, and 3.05 tons for 2005.

**Strawberries for Fresh Market and Processing: Area Planted and Harvested,  
Yield, Production, Price, and Value by State and United States, 2003-2005**

State	Area Planted			Area Harvested		
	2003	2004	2005	2003	2004	2005
	<i>Acres</i>	<i>Acres</i>	<i>Acres</i>	<i>Acres</i>	<i>Acres</i>	<i>Acres</i>
CA	29,600	33,200	34,300	29,600	33,200	34,300
FL	7,100	7,100	7,300	7,100	7,100	7,300
MI	1,200	1,100	1,100	1,100	900	1,000
NY	1,700	1,700	1,700	1,500	1,500	1,500
NC	1,800	1,700	1,600	1,700	1,600	1,500
OH	1,000	1,000	1,100	800	800	800
OR	3,500	3,300	3,100	2,600	2,400	2,200
PA	1,300	1,300	1,300	1,300	1,300	1,300
WA	1,800	1,700	1,500	1,800	1,700	1,500
WI	1,000	1,000	900	900	900	800
US	50,000	53,100	53,900	48,400	51,400	52,200
	Yield per Acre			Production		
	2003	2004	2005	2003	2004	2005
	<i>Cwt</i>	<i>Cwt</i>	<i>Cwt</i>	<i>1,000 Cwt</i>	<i>1,000 Cwt</i>	<i>1,000 Cwt</i>
CA	645	590	600	19,092	19,588	20,580
FL	220	230	245	1,562	1,633	1,789
MI	57	46	52	63	41	52
NY	33	43	35	50	65	52
NC	100	110	130	170	176	195
OH	48	48	53	38	38	42
OR	115	135	115	295	324	250
PA	64	61	54	83	79	70
WA	90	90	100	162	153	150
WI	50	46	51	45	41	41
US	445	431	445	21,560	22,138	23,221
	Value					
	Per Cwt			Total		
	2003	2004	2005	2003	2004	2005
	<i>Dollars</i>	<i>Dollars</i>	<i>Dollars</i>	<i>1,000 Dollars</i>	<i>1,000 Dollars</i>	<i>1,000 Dollars</i>
CA	61.40	61.50	53.90	1,172,537	1,205,513	1,110,174
FL	82.70	109.00	110.00	129,177	177,997	196,790
MI	100.00	97.70	93.80	6,320	4,005	4,878
NY	155.00	160.00	155.00	7,750	10,400	8,060
NC	90.00	90.00	95.00	15,300	15,840	18,525
OH	120.00	134.00	137.00	4,560	5,092	5,754
OR	49.70	48.90	54.70	14,675	15,839	13,680
PA	134.00	164.00	183.00	11,122	12,956	12,810
WA	52.10	47.80	46.30	8,436	7,310	6,940
WI	117.00	125.00	133.00	5,265	5,125	5,453
US	63.80	66.00	59.60	1,375,142	1,460,077	1,383,064

**Strawberries for Fresh Market and Processing: Production, Price, and Value  
by Utilization, State, and United States, 2003-2005**

Utilization and State	Production					
	2003		2004		2005	
	<i>1,000 Cwt</i>		<i>1,000 Cwt</i>		<i>1,000 Cwt</i>	
Fresh Market						
CA	14,377		14,830		15,825	
FL	1,562		1,633		1,789	
MI	58		36		47	
NY	50		65		52	
NC	170		176		195	
OH	38		38		42	
OR	20		29		24	
PA	83		79		70	
WA	21		17		20	
WI	45		41		41	
US	16,424		16,944		18,105	
Processing						
CA	4,715		4,758		4,755	
MI	5		5		5	
OR	275		295		226	
WA	141		136		130	
US	5,136		5,194		5,116	
	Value					
	Per Unit			Total		
	2003	2004	2005	2003	2004	2005
	<i>Dollars Per Cwt</i>	<i>Dollars Per Cwt</i>	<i>Dollars Per Cwt</i>	<i>1,000 Dollars</i>	<i>1,000 Dollars</i>	<i>1,000 Dollars</i>
Fresh Market						
CA	72.80	73.30	61.80	1,046,646	1,087,039	977,985
FL	82.70	109.00	110.00	129,177	177,997	196,790
MI	105.00	105.00	99.00	6,090	3,780	4,653
NY	155.00	160.00	155.00	7,750	10,400	8,060
NC	90.00	90.00	95.00	15,300	15,840	18,525
OH	120.00	134.00	137.00	4,560	5,092	5,754
OR	115.00	124.00	118.00	2,300	3,596	2,832
PA	134.00	164.00	183.00	11,122	12,956	12,810
WA	113.00	110.00	113.00	2,373	1,870	2,260
WI	117.00	125.00	133.00	5,265	5,125	5,453
US	74.90	78.10	68.20	1,230,583	1,323,695	1,235,122
Processing						
CA	26.70	24.90	27.80	125,891	118,474	132,189
MI	46.00	45.00	45.00	230	225	225
OR	45.00	41.50	48.00	12,375	12,243	10,848
WA	43.00	40.00	36.00	6,063	5,440	4,680
US	28.10	26.30	28.90	144,559	136,382	147,942

**Berries: Harvested Acreage, Yield, Production, and Utilization  
by Crop, State, and United States, 2003-2005**

Crop, State, and Year	Area Harvested	Yield Per Acre <sup>1</sup>	Production		Utilization	
			Total	Utilized	Fresh	Processed
	<i>Acres</i>	<i>Pounds</i>	<i>1,000 Pounds</i>	<i>1,000 Pounds</i>	<i>1,000 Pounds</i>	<i>1,000 Pounds</i>
<b>Cultivated Blueberries</b>						
<b>AL <sup>2</sup></b>						
2003	320	1,410	600	450	450	
2004	300	1,900	980	570	570	
2005	280	1,860	750	520	520	
<b>AR <sup>2</sup></b>						
2003	550	2,820	1,650	1,550	1,550	
2004	530	3,400	1,900	1,800	1,800	
2005	530	2,550	1,500	1,350	1,350	
<b>CA <sup>3</sup></b>						
2003						
2004						
2005 <sup>2</sup>	1,800	3,100	5,580	5,580	5,580	
<b>FL <sup>2</sup></b>						
2003	1,900	1,840	3,800	3,500	3,500	
2004	2,300	2,430	6,000	5,600	5,600	
2005	2,500	2,080	5,200	5,200	5,200	
<b>GA</b>						
2003	4,500	3,780	17,000	17,000	8,000	9,000
2004	4,800	4,380	21,000	21,000	10,000	11,000
2005	6,000	4,330	26,000	26,000	12,000	14,000
<b>IN</b>						
2003	600	3,000	1,900	1,800	1,300	500
2004	600	5,000	3,100	3,000	1,500	1,500
2005	600	5,830	3,500	3,500	2,000	1,500
<b>MI</b>						
2003	15,900	3,900	62,000	62,000	24,000	38,000
2004	17,400	4,600	80,000	80,000	36,000	44,000
2005	16,800	3,930	66,000	66,000	25,000	41,000
<b>NJ</b>						
2003	7,500	5,330	41,000	40,000	33,000	7,000
2004	7,500	5,200	39,000	39,000	33,000	6,000
2005	7,500	6,000	45,000	45,000	33,000	12,000
<b>NY</b>						
2003	700	2,860	2,100	2,000	1,950	50
2004	700	2,430	2,000	1,700	1,400	300
2005	700	2,000	1,500	1,400	1,350	50
<b>NC</b>						
2003	4,200	5,360	22,500	22,500	16,100	6,400
2004	4,400	5,200	22,900	22,900	16,400	6,500
2005	5,000	5,200	26,000	26,000	16,100	9,900
<b>OR</b>						
2003	3,300	7,240	23,900	23,900	10,400	13,500
2004	3,500	9,710	34,000	34,000	13,400	20,600
2005	3,800	8,530	32,400	32,400	12,000	20,400
<b>WA</b>						
2003	2,200	6,000	13,200	13,200	3,400	9,800
2004	2,400	7,500	18,000	18,000	5,000	13,000
2005	2,800	7,000	19,600	19,600	3,900	15,700
<b>US</b>						
2003	41,670	4,510	189,650	187,900	103,620	84,280
2004	44,430	5,120	228,880	227,570	124,550	103,020
2005	48,310	4,810	233,030	232,550	117,850	114,700
<b>Wild Blueberries</b>						
<b>ME</b>						
2003			80,400	80,400	400	80,000
2004			46,000	46,000	300	45,700
2005			58,500	58,500	300	58,200

<sup>1</sup> Yield is based on utilized production.

<sup>2</sup> Small quantities of processed blueberries are included in fresh to avoid disclosure of individual operations.

<sup>3</sup> Estimates began in 2005.



**Berries: Price and Value by Crop, State,  
and United States, 2003-2005**

Crop, State and Year	Price per Pound			Value of Production		
	Fresh	Processed	All	Fresh	Processed	Total
	<i>Dollars</i>	<i>Dollars</i>	<i>Dollars</i>	<i>1,000 Dollars</i>	<i>1,000 Dollars</i>	<i>1,000 Dollars</i>
Cultivated Blueberries						
AL <sup>1</sup>						
2003	1.070		1.070	482		482
2004	1.230		1.230	699		699
2005	0.906		0.906	471		471
AR <sup>1</sup>						
2003	1.330		1.330	2,067		2,067
2004	1.230		1.230	2,216		2,216
2005	1.740		1.740	2,349		2,349
CA <sup>2</sup>						
2003						
2004						
2005 <sup>1</sup>	4.460		4.460	24,886		24,886
FL <sup>1</sup>						
2003	5.200		5.200	18,200		18,200
2004	4.500		4.500	25,200		25,200
2005	6.300		6.300	32,760		32,760
GA						
2003	1.640	0.630	1.110	13,120	5,670	18,790
2004	1.640	0.670	1.130	16,400	7,370	23,770
2005	1.730	0.790	1.220	20,760	11,060	31,820
IN						
2003	1.320	0.780	1.170	1,716	390	2,106
2004	1.330	0.850	1.090	1,995	1,275	3,270
2005	1.410	0.970	1.220	2,820	1,455	4,275
MI						
2003	1.300	0.840	1.020	31,200	31,905	63,105
2004	1.600	0.900	1.220	57,600	39,610	97,210
2005	1.700	1.000	1.270	42,500	41,000	83,500
NJ						
2003	1.200	0.870	1.140	39,600	6,090	45,690
2004	1.210	0.950	1.170	39,930	5,700	45,630
2005	1.310	1.020	1.230	43,230	12,240	55,470
NY						
2003	1.300	0.860	1.290	2,535	43	2,578
2004	1.450	0.950	1.360	2,030	285	2,315
2005	1.420	0.920	1.400	1,917	46	1,963
NC						
2003	1.850	0.780	1.550	29,785	4,992	34,777
2004	1.700	0.670	1.410	27,880	4,355	32,235
2005	1.800	0.780	1.410	28,980	7,722	36,702
OR						
2003	1.090	0.700	0.870	11,336	9,450	20,786
2004	0.970	0.700	0.806	12,998	14,420	27,418
2005	1.210	0.780	0.939	14,520	15,912	30,432
WA						
2003	1.330	0.770	0.914	4,522	7,546	12,068
2004	1.250	0.750	0.889	6,250	9,750	16,000
2005	1.330	0.890	0.978	5,187	13,973	19,160
US						
2003	1.490	0.784	1.170	154,533	66,116	220,649
2004	1.550	0.805	1.210	193,058	82,905	275,963
2005	1.870	0.905	1.390	219,961	103,827	323,788
Wild Blueberries						
ME						
2003	1.200	0.330	0.334	480	26,400	26,880
2004	1.350	0.450	0.456	405	20,565	20,970
2005	1.500	0.600	0.605	450	34,920	35,370

<sup>1</sup> Small quantities of processed blueberries are included in fresh to avoid disclosure of individual operations.

<sup>2</sup> Estimates began in 2005.

**Berries: Harvested Acreage, Yield, Production, and Utilization  
by Crop, State, and United States, 2003-2005**

Crop, State, and Year	Area Harvested	Yield Per Acre <sup>1</sup>	Production		Utilization	
			Total	Utilized	Fresh	Processed
	<i>Acres</i>	<i>Pounds</i>	<i>1,000 Pounds</i>	<i>1,000 Pounds</i>	<i>1,000 Pounds</i>	<i>1,000 Pounds</i>
Boysenberries						
CA <sup>2</sup>						
2003	200	6,000	1,200	1,200		
2004	300	10,000	3,000	3,000		
2005	310	9,030	2,800	2,800		
OR						
2003	800	3,880	3,100	3,100	200	2,900
2004	750	4,270	3,200	3,200	200	3,000
2005	600	3,830	2,330	2,300	200	2,100
US <sup>2</sup>						
2003	1,000	4,300	4,300	4,300		
2004	1,050	5,900	6,200	6,200		
2005	910	5,600	5,130	5,100		
Loganberries						
OR						
2003	70	2,710	190	190	70	120
2004	60	2,830	180	170	20	150
2005	60	3,670	290	220	20	200
Black Raspberries						
OR						
2003	1,100	2,090	2,400	2,300	10	2,290
2004	1,100	2,160	2,380	2,380	10	2,370
2005	1,300	3,590	4,670	4,670	20	4,650
Red Raspberries						
OR						
2003	2,000	2,600	5,200	5,200	1,000	4,200
2004	1,900	3,530	6,700	6,700	1,100	5,600
2005	1,900	3,680	7,000	7,000	1,300	5,700
WA						
2003	9,200	7,300	67,700	67,200	1,400	65,800
2004	9,000	6,600	59,400	59,400	1,500	57,900
2005	9,500	7,400	70,300	70,300	1,400	68,900
US						
2003	11,200	6,460	72,900	72,400	2,400	70,000
2004	10,900	6,060	66,100	66,100	2,600	63,500
2005	11,400	6,780	77,300	77,300	2,700	74,600
All Raspberries						
CA <sup>2</sup>						
2003	3,000	20,500	61,500	61,500		
2004	4,100	22,000	90,000	90,000		
2005	4,200	19,600	82,500	82,500		

<sup>1</sup> Yield is based on utilized production.

<sup>2</sup> No breakdown of utilization available.

**Berries: Price and Value by Crop, State,  
and United States, 2003-2005**

Crop, State, and Year	Price per Pound			Value of Production		
	Fresh	Processed	All	Fresh	Processed	Total
	<i>Dollars</i>	<i>Dollars</i>	<i>Dollars</i>	<i>1,000 Dollars</i>	<i>1,000 Dollars</i>	<i>1,000 Dollars</i>
Boysenberries						
CA <sup>1</sup>						
2003			0.891			1,069
2004			1.200			3,600
2005			1.330			3,724
OR						
2003	1.390	0.820	0.857	278	2,378	2,656
2004	1.490	1.090	1.120	298	3,270	3,568
2005	1.630	1.480	1.490	326	3,108	3,434
US <sup>1</sup>						
2003			0.866			3,725
2004			1.160			7,168
2005			1.400			7,158
Loganberries						
OR						
2003	1.330	0.800	0.990	93	96	189
2004	1.140	0.720	0.771	23	108	131
2005	1.420	0.800	0.855	28	160	188
Black Raspberries						
OR						
2003	1.820	1.360	1.360	18	3,114	3,132
2004	2.430	2.250	2.250	24	5,333	5,357
2005	1.870	2.460	2.460	37	11,439	11,476
Red Raspberries						
OR						
2003	1.280	0.700	0.812	1,280	2,940	4,220
2004	1.370	0.760	0.860	1,507	4,256	5,763
2005	1.550	0.660	0.825	2,015	3,762	5,777
WA						
2003	1.670	0.520	0.544	2,338	34,216	36,554
2004	1.690	0.750	0.774	2,535	43,425	45,960
2005	1.970	0.530	0.559	2,758	36,517	39,275
US						
2003	1.510	0.531	0.563	3,618	37,156	40,774
2004	1.550	0.751	0.782	4,042	47,681	51,723
2005	1.770	0.540	0.583	4,773	40,279	45,052
All Raspberries						
CA <sup>1</sup>						
2003			2.080			127,920
2004			2.090			188,100
2005			1.990			164,175

<sup>1</sup> No breakdown of utilization available.

**Oregon Blackberries: Harvested Acreage, Yield, Production, and  
Utilization by Variety, 2003-2005**

Variety and Year	Area Harvested	Yield Per Acre <sup>1</sup>	Production		Utilization	
			Total	Utilized	Fresh	Processed
	<i>Acres</i>	<i>Pounds</i>	<i>1,000 Pounds</i>	<i>1,000 Pounds</i>	<i>1,000 Pounds</i>	<i>1,000 Pounds</i>
Cultivated Blackberries (OR)						
Marion						
2003	4,400	6,270	28,000	27,600	400	27,200
2004	4,300	6,580	28,300	28,300	300	28,000
2005	4,300	6,000	26,200	25,800	400	25,400
Evergreen						
2003	1,000	6,300	6,400	6,300	200	6,100
2004	900	6,440	5,800	5,800	300	5,500
2005	900	5,440	4,900	4,900	300	4,600
Other						
2003	1,000	7,800	7,900	7,800	1,500	6,300
2004	1,100	11,600	12,800	12,800	1,000	11,800
2005	1,200	10,900	13,200	13,100	1,000	12,100
All						
2003	6,400	6,520	42,300	41,700	2,100	39,600
2004	6,300	7,440	46,900	46,900	1,600	45,300
2005	6,400	6,840	44,300	43,800	1,700	42,100

<sup>1</sup> Yield is based on utilized production.

**Oregon Blackberries: Price and Value by Variety, 2003-2005**

Variety and Year	Price per Pound			Value of Production		
	Fresh	Processed	All	Fresh	Processed	Total
	<i>Dollars</i>	<i>Dollars</i>	<i>Dollars</i>	<i>1,000 Dollars</i>	<i>1,000 Dollars</i>	<i>1,000 Dollars</i>
Cultivated Blackberries (OR)						
Marion						
2003	1.160	0.680	0.687	464	18,496	18,960
2004	1.220	0.740	0.745	366	20,720	21,086
2005	1.360	0.730	0.740	544	18,542	19,086
Evergreen						
2003	0.990	0.690	0.700	198	4,209	4,407
2004	1.020	0.590	0.612	306	3,245	3,551
2005	1.260	0.700	0.734	378	3,220	3,598
Other						
2003	1.100	0.630	0.720	1,650	3,969	5,619
2004	1.100	0.650	0.685	1,100	7,670	8,770
2005	1.710	0.690	0.768	1,710	8,349	10,059
All						
2003	1.100	0.674	0.695	2,312	26,674	28,986
2004	1.110	0.698	0.712	1,772	31,635	33,407
2005	1.550	0.715	0.748	2,632	30,111	32,743

**Sweet Cherries: Bearing Acreage, Yield, Production, and Utilization  
by State and United States, 2003-2005<sup>1</sup>**

State and Year	Bearing Acreage	Yield Per Acre <sup>2</sup>	Production		Utilization	
			Total	Utilized	Fresh	Processed
	<i>Acres</i>	<i>Tons</i>	<i>Tons</i>	<i>Tons</i>	<i>Tons</i>	<i>Tons</i>
CA						
2003	25,000	2.62	65,600	63,900	51,600	12,300
2004	26,000	2.81	73,000	70,300	57,700	12,600
2005	27,000	1.95	52,700	48,600	35,600	13,000
ID						
2003			2,900	2,900		
2004			3,100	3,100		
2005	720	2.36	1,700	1,700		
MI						
2003	8,100	1.60	13,000	13,000	500	12,500
2004	8,100	3.05	24,700	24,700	500	24,200
2005	8,200	3.29	27,000	27,000	600	26,400
MT						
2003			2,060	1,850		
2004			2,360	2,220		
2005	740	1.58	1,170	1,120		
NY						
2003	700	0.86	600	590		
2004	700	1.29	900	890		
2005	700	1.14	800	740		
OR						
2003	12,000	3.42	41,000	41,000	22,000	19,000
2004	12,000	3.58	43,000	42,000	22,000	20,000
2005	12,000	2.33	28,000	25,000	14,000	11,000
PA						
2003			340	340	340	
2004			400	350	350	
2005 <sup>3</sup>						
UT						
2003	650	3.38	2,200	2,000	1,000	1,000
2004	650	2.46	1,600	1,600	850	750
2005	650	2.77	1,800	1,750	980	770
WA						
2003	27,000	4.37	118,000	118,000	96,000	22,000
2004	29,000	4.62	134,000	134,000	99,000	35,000
2005	29,000	4.76	138,000	138,000	113,000	25,000
US						
2003	74,990	3.28	245,700	243,580	175,570	68,010
2004	78,275	3.62	283,060	279,160	185,050	94,110
2005	79,010	3.18	251,170	243,910	167,150	76,760

<sup>1</sup> Missing data not published to avoid disclosure of individual operations.

<sup>2</sup> Yield is based on total production.

<sup>3</sup> Estimates discontinued in 2005.

**Sweet Cherries: Price and Value by State  
and United States, 2003-2005<sup>1</sup>**

State and Year	Price per Ton			Value of Production		
	Fresh <i>Dollars</i>	Processed <i>Dollars</i>	All <i>Dollars</i>	Fresh <i>1,000 Dollars</i>	Processed <i>1,000 Dollars</i>	All <i>1,000 Dollars</i>
CA						
2003	1,980.00	383.00	1,670.00	102,168	4,715	106,883
2004	2,020.00	524.00	1,750.00	116,554	6,602	123,156
2005	2,210.00	467.00	1,740.00	78,676	6,075	84,751
ID						
2003			1,400.00			4,056
2004			1,390.00			4,323
2005			1,950.00			3,313
MI						
2003	2,230.00	774.00	830.00	1,115	9,680	10,795
2004	2,020.00	632.00	660.00	1,010	15,301	16,311
2005	1,770.00	594.00	620.00	1,062	15,670	16,732
MT						
2003			1,710.00			3,163
2004			2,010.00			4,473
2005			3,660.00			4,094
NY						
2003			1,770.00			1,046
2004			1,400.00			1,245
2005			1,710.00			1,267
OR						
2003	1,320.00	811.00	1,080.00	29,040	15,410	44,450
2004	1,470.00	802.00	1,150.00	32,340	16,040	48,380
2005	1,930.00	871.00	1,460.00	27,020	9,578	36,598
PA						
2003	2,360.00		2,360.00	802		802
2004	2,980.00		2,980.00	1,043		1,043
2005 <sup>2</sup>						
UT						
2003	1,200.00	600.00	900.00	1,200	600	1,800
2004	1,450.00	480.00	996.00	1,233	360	1,593
2005	1,500.00	600.00	1,100.00	1,470	462	1,932
WA						
2003	1,640.00	531.00	1,430.00	157,440	11,678	169,118
2004	2,220.00	481.00	1,770.00	219,780	16,829	236,609
2005	2,830.00	601.00	2,430.00	319,790	15,027	334,817
US						
2003	1,700.00	631.00	1,400.00	299,209	42,904	342,113
2004	2,060.00	597.00	1,570.00	380,972	56,161	437,133
2005	2,610.00	613.00	1,980.00	436,429	47,075	483,504

<sup>1</sup> Missing data not published to avoid disclosure of individual operations.

<sup>2</sup> Estimates discontinued in 2005.

**Tart Cherries: Bearing Acreage, Yield, Production, and Utilization  
by State and United States, 2003-2005 <sup>1</sup>**

State and Year	Bearing Acreage	Yield Per Acre <sup>2</sup>	Production		Utilization	
			Total	Utilized	Fresh	Processed
	<i>Acres</i>	<i>Pounds</i>	<i>Million Pounds</i>	<i>Million Pounds</i>	<i>Million Pounds</i>	<i>Million Pounds</i>
CO						
2003			0.4	0.4		
2004			0.2	0.2		
2005 <sup>3</sup>						
MI						
2003	27,000	5,700	154.0	154.0	0.5	153.5
2004	27,000	5,520	149.0	149.0	0.5	148.5
2005	27,300	7,620	208.0	208.0	0.5	207.5
NY						
2003	2,000	3,600	7.2	7.2		
2004	2,000	5,350	10.7	10.7		
2005	2,000	3,750	7.5	7.5		
OR						
2003	800	1,750	1.4	1.4		
2004	800	4,880	3.9	3.9		
2005	800	375	0.3	0.3		
PA						
2003	800	4,880	3.9	3.9		
2004	800	3,750	3.0	3.0		
2005	800	3,250	2.6	2.6		
UT						
2003	2,800	9,290	26.0	26.0		26.0
2004	2,800	7,860	22.0	22.0		22.0
2005	2,800	10,000	28.0	26.0		26.0
WA						
2003			20.1	20.1		
2004			17.5	17.5		
2005	1,600	10,300	16.5	16.5		
WI						
2003	1,900	7,000	13.3	13.3	0.2	13.1
2004	1,900	3,530	6.7	6.7	0.1	6.6
2005	1,800	4,170	7.5	7.5	0.1	7.4
US						
2003	36,970	6,120	226.3	226.3	1.0	225.3
2004	36,950	5,760	213.0	213.0	1.3	211.7
2005	37,100	7,290	270.4	268.4	1.2	267.2

<sup>1</sup> Missing data not published to avoid disclosure of individual operations.

<sup>2</sup> Yield is based on total production.

<sup>3</sup> Estimates discontinued in 2005.



**Tart Cherries: Price and Value by State  
and United States, 2003-2005**<sup>1</sup>

State and Year	Price per Pound			Value of Production		
	Fresh <i>Dollars</i>	Processed <i>Dollars</i>	All <i>Dollars</i>	Fresh <i>1,000 Dollars</i>	Processed <i>1,000 Dollars</i>	All <i>1,000 Dollars</i>
CO						
2003			0.380			152
2004			0.210			42
2005 <sup>2</sup>						
MI						
2003	0.750	0.375	0.376	375	57,563	57,938
2004	0.800	0.333	0.335	400	49,461	49,861
2005	0.500	0.230	0.230	250	47,628	47,878
NY						
2003			0.314			2,262
2004			0.409			4,381
2005			0.432			3,243
OR						
2003			0.361			505
2004			0.369			1,439
2005			0.380			114
PA						
2003			0.434			1,694
2004			0.353			1,060
2005			0.430			1,118
UT						
2003		0.228	0.228		5,928	5,928
2004		0.218	0.218		4,796	4,796
2005		0.250	0.250		6,500	6,500
WA						
2003			0.323			6,492
2004			0.309			5,409
2005			0.239			3,951
WI						
2003	0.550	0.392	0.394	110	5,129	5,239
2004	0.710	0.370	0.375	71	2,442	2,513
2005	0.500	0.330	0.332	50	2,442	2,492
US						
2003	0.744	0.353	0.354	744	79,466	80,210
2004	0.915	0.323	0.326	1,190	68,311	69,501
2005	0.893	0.240	0.243	1,071	64,225	65,296

<sup>1</sup> Missing data not published to avoid disclosure of individual operations.

<sup>2</sup> Estimates discontinued in 2005.

**Sweet and Tart Cherries: Processed Utilization, Use,  
and Price by State and United States, 2003-2005**

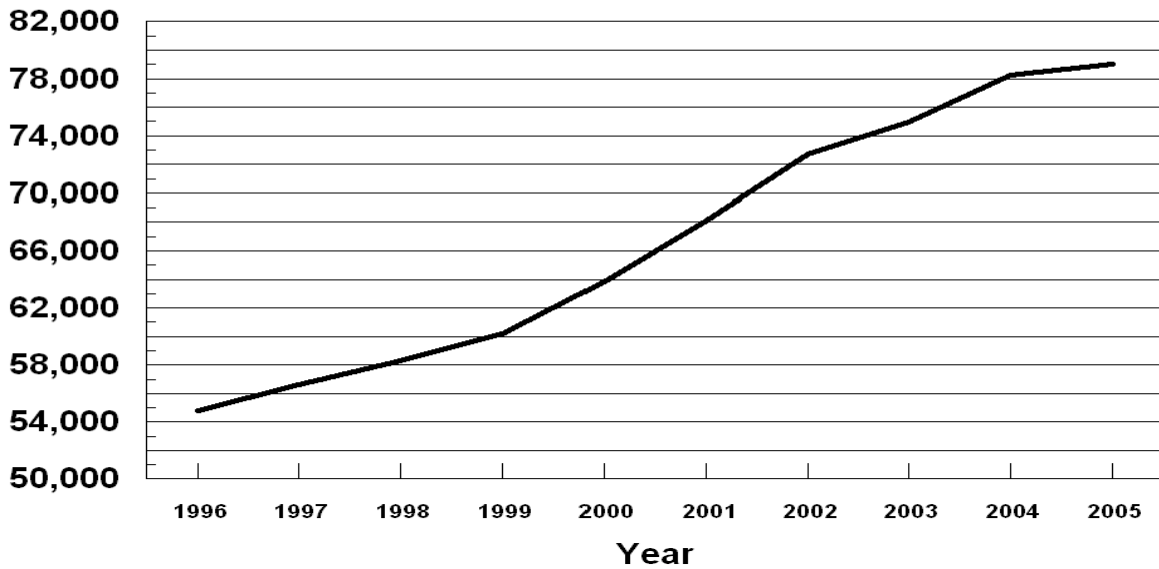
Crop, Use, and State	Processed Utilization					
	Quantity			Price per Unit		
	2003	2004	2005	2003	2004	2005
	<i>Tons</i>	<i>Tons</i>	<i>Tons</i>	<i>Dollars per Ton</i>	<i>Dollars per Ton</i>	<i>Dollars per Ton</i>
Sweet Cherries						
Canned						
MI	1,500	2,870	4,350	920.00	640.00	630.00
OR	2,000	2,000	1,300	1,100.00	1,100.00	1,060.00
WA	5,500	4,500	4,000	810.00	798.00	810.00
US	9,000	9,370	9,650	893.00	814.00	763.00
Brined						
MI	8,000	18,100	17,800	675.00	617.00	550.00
OR	14,000	14,000	6,900	770.00	740.00	880.00
WA	10,000	18,000	13,000	420.00	541.00	719.00
Oth Sts	10,050	10,630	7,530	534.00	686.00	779.00
US	42,050	60,730	45,230	612.00	635.00	687.00
Other <sup>1</sup>						
MI	3,000	3,230	4,250	967.00	711.00	739.00
OR	3,000	4,000	2,800	810.00	870.00	760.00
WA	6,500	12,500	8,000	465.00	280.00	305.00
Oth Sts	4,460	4,280	6,830	170.00	159.00	135.00
US	16,960	24,010	21,880	537.00	415.00	395.00
	<i>Million Pounds</i>	<i>Million Pounds</i>	<i>Million Pounds</i>	<i>Dollars per Pound</i>	<i>Dollars per Pound</i>	<i>Dollars per Pound</i>
Tart Cherries						
Canned						
MI	53.0	39.5	51.0	0.390	0.340	0.245
Oth Sts	7.9	7.1	6.9	0.376	0.351	0.318
US	60.9	46.6	57.9	0.388	0.342	0.258
Frozen						
MI	95.0	103.0	146.0	0.370	0.340	0.230
Oth Sts	53.7	47.1	41.9	0.308	0.303	0.273
US	148.7	150.1	187.9	0.348	0.328	0.240
Other <sup>2</sup>						
MI	5.5	6.0	10.5	0.317	0.169	0.148
Oth Sts	10.2	9.0	10.9	0.234	0.230	0.272
US	15.7	15.0	21.4	0.263	0.206	0.211

<sup>1</sup> Includes California canned utilization and other processed utilizations (frozen, juice, etc.) from all States.

<sup>2</sup> Juice, wine, brined, and dried.

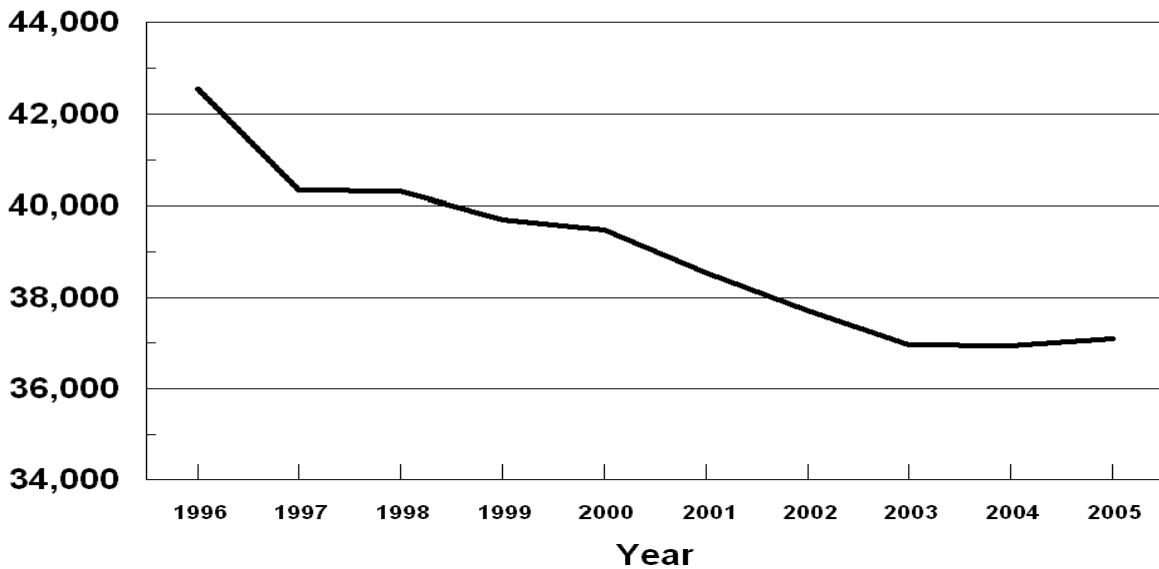
## U. S. Sweet Cherries

Bearing Acres  
1996 - 2005



## U. S. Tart Cherries

Bearing Acres  
1996 - 2005



**Cranberries: Area Harvested, Yield, Production and Utilization  
by State and United States, 2003-2005**

Year and State	Area Harvested	Yield per Acre <sup>1</sup>	Production		Utilization	
			Total	Utilized	Fresh	Processed
	<i>Acres</i>	<i>Barrels</i> <sup>2</sup>	<i>Barrels</i> <sup>2</sup>	<i>Barrels</i> <sup>2</sup>	<i>Barrels</i> <sup>2</sup>	<i>Barrels</i> <sup>2</sup>
2003						
MA	14,400	97.6	1,406,000	1,406,000	107,000	1,299,000
NJ <sup>3</sup>	3,200	150.0	480,000	480,000		480,000
OR	2,900	175.9	510,000	510,000	9,000	501,000
WA	1,700	111.8	190,000	190,000	30,000	160,000
WI	17,400	207.3	3,607,000	3,607,000	205,000	3,402,000
US	39,600	156.4	6,193,000	6,193,000	351,000	5,842,000
2004						
MA	14,100	128.2	1,808,000	1,808,000	152,000	1,656,000
NJ <sup>3</sup>	3,100	129.7	402,000	394,000		394,000
OR	2,900	170.7	495,000	495,000	10,000	485,000
WA	1,700	100.0	170,000	170,000	30,000	140,000
WI	17,400	189.7	3,300,000	3,300,000	205,000	3,095,000
US	39,200	157.5	6,175,000	6,167,000	397,000	5,770,000
2005						
MA	14,200	98.9	1,405,000	1,405,000	122,000	1,283,000
NJ <sup>3</sup>	3,100	171.9	533,000	533,000		533,000
OR	2,700	163.0	440,000	440,000	20,000	420,000
WA	1,700	110.0	187,000	187,000	18,000	169,000
WI	17,400	210.3	3,660,000	3,660,000	200,000	3,460,000
US	39,100	159.2	6,225,000	6,225,000	360,000	5,865,000

<sup>1</sup> Yield is based on total production.

<sup>2</sup> A barrel weighs 100 pounds.

<sup>3</sup> Small quantities of fresh cranberries are included in processed to avoid disclosure of individual operations.

**Cranberries: Utilization, Price, and Value  
by State and United States, 2003-2005**

Year and State	Price per Barrel <sup>1 2</sup>			Value of Utilized Production		
	Fresh	Processed	All	Fresh	Processed	All
	<i>Dollars</i>	<i>Dollars</i>	<i>Dollars</i>	<i>1,000 Dollars</i>	<i>1,000 Dollars</i>	<i>1,000 Dollars</i>
2003						
MA	56.30	32.30	34.10	6,024	41,958	47,982
NJ <sup>3</sup>		31.90	31.90		15,312	15,312
OR	55.80	33.70	34.10	502	16,884	17,386
WA	52.90	31.90	35.20	1,587	5,104	6,691
WI	51.40	32.90	34.00	10,537	111,926	122,463
US	53.10	32.70	33.90	18,650	191,184	209,834
2004						
MA	54.30	30.10	32.10	8,254	49,846	58,100
NJ <sup>3</sup>		30.40	30.40		11,978	11,978
OR	55.30	32.00	32.50	553	15,520	16,073
WA	54.40	30.50	34.70	1,632	4,270	5,902
WI	53.60	31.10	32.50	10,988	96,255	107,243
US	54.00	30.80	32.30	21,427	177,869	199,296
2005						
MA	55.10	31.70	33.70	6,722	40,671	47,393
NJ <sup>3</sup>		33.70	33.70		17,962	17,962
OR	48.70	33.60	34.30	974	14,112	15,086
WA	55.80	34.20	36.30	1,004	5,780	6,784
WI	55.80	32.70	34.00	11,160	113,142	124,302
US	55.20	32.70	34.00	19,860	191,667	211,527

<sup>1</sup> Weighted average of co-op and independent sales. Co-op prices represent pool proceeds less returns for processing non-cranberry products, capital stock dividends, capital stock retains, and other retains.

<sup>2</sup> A barrel weighs 100 pounds.

<sup>3</sup> Small quantities of fresh cranberries are included in processed to avoid disclosure of individual operations.

**Grapes: Bearing Acreage and Yield by Type,  
State, and United States, 2003-2005**

State and Type	Bearing Acreage			Yield per Acre <sup>1</sup>		
	2003	2004	2005	2003	2004	2005
	<i>Acres</i>	<i>Acres</i>	<i>Acres</i>	<i>Tons</i>	<i>Tons</i>	<i>Tons</i>
AZ	2,100	1,000	400	3.81	4.00	2.50
AR	1,100	900	750	2.18	3.33	2.53
CA						
All Types	819,000	800,000	800,000	7.16	7.03	7.66
Wine	479,000	473,000	474,000	6.07	5.95	6.75
Table	85,000	83,000	84,000	8.61	9.28	9.88
Raisin	255,000	244,000	242,000	8.71	8.35	8.68
GA	1,100	1,100	1,100	2.82	3.00	3.18
MI	13,200	13,900	14,200	7.16	4.50	7.04
MO	960	1,100	1,200	3.16	3.30	3.25
NY	31,000	31,000	31,000	6.39	4.58	5.74
NC	950	1,100	1,300	2.95	3.18	3.00
OH	2,100	2,100	2,200	3.86	2.29	3.86
OR	10,700	11,100	11,700	2.24	2.16	2.10
PA	12,000	12,000	12,000	7.08	7.23	7.50
TX	2,900	2,900	2,900	2.07	3.03	3.34
VA	1,900	1,900	2,000	1.89	1.95	2.45
WA						
All Types	52,000	53,000	54,000	6.62	5.04	7.69
Wine	27,000	27,000	28,000	4.15	3.96	3.93
Juice	25,000	26,000	26,000	9.28	6.15	11.70
US	951,010	933,100	934,750	6.99	6.69	7.46

<sup>1</sup> Yield is based on total production.

**Grapes: Total and Utilized Production, Price, and Value  
by Type, State, and United States, 2003-2005**

State and Type	Total Production			Utilized Production		
	2003	2004	2005	2003	2004	2005
	<i>Tons</i>	<i>Tons</i>	<i>Tons</i>	<i>Tons</i>	<i>Tons</i>	<i>Tons</i>
AZ	8,000	4,000	1,000	8,000	4,000	1,000
AR	2,400	3,000	1,900	2,300	2,700	1,900
CA						
All Types	5,861,000	5,623,000	6,130,000	5,786,000	5,623,000	6,130,000
Wine	2,909,000	2,815,000	3,200,000	2,909,000	2,815,000	3,200,000
Table <sup>1</sup>	732,000	770,000	830,000	678,000	770,000	830,000
Raisin <sup>1</sup>	2,220,000	2,038,000	2,100,000	2,199,000	2,038,000	2,100,000
GA	3,100	3,300	3,500	2,800	3,200	3,500
MI	94,500	62,500	100,000	80,500	58,000	100,000
MO	3,030	3,630	3,900	3,030	3,630	3,900
NY	198,000	142,000	178,000	152,000	142,000	178,000
NC	2,800	3,500	3,900	2,800	3,500	3,900
OH	8,100	4,800	8,500	7,000	4,800	8,500
OR	24,000	24,000	24,600	24,000	19,400	22,800
PA	85,000	86,800	90,000	68,000	86,800	90,000
TX	6,000	8,800	9,700	5,800	8,500	8,500
VA	3,600	3,700	4,900	3,400	3,400	4,650
WA						
All Types	344,000	267,000	415,000	344,000	267,000	415,000
Wine	112,000	107,000	110,000	112,000	107,000	110,000
Juice	232,000	160,000	305,000	232,000	160,000	305,000
US	6,643,530	6,240,030	6,974,900	6,489,630	6,229,930	6,971,650
	Price per Ton			Value of Utilized Production		
	2003	2004	2005	2003	2004	2005
	<i>Dollars</i>	<i>Dollars</i>	<i>Dollars</i>	<i>1,000 Dollars</i>	<i>1,000 Dollars</i>	<i>1,000 Dollars</i>
AZ	1,030.00	334.00	550.00	8,204	1,335	550
AR	485.00	502.00	539.00	1,115	1,355	1,024
CA						
All Types	402.00	492.00	445.00	2,324,650	2,764,534	2,727,406
Wine	530.00	570.00	570.00	1,542,876	1,604,925	1,824,150
Table <sup>1</sup>	601.00	695.00	373.00	407,607	535,009	309,576
Raisin <sup>1</sup>	170.00	306.00	283.00	374,167	624,600	593,680
GA	978.00	1,160.00	1,390.00	2,738	3,724	4,850
MI	262.00	242.00	214.00	21,086	14,015	21,351
MO	610.00	720.00	774.00	1,849	2,612	3,017
NY	252.00	229.00	193.00	38,253	32,536	34,290
NC	1,070.00	962.00	937.00	2,989	3,366	3,653
OH	350.00	417.00	318.00	2,448	2,000	2,699
OR	1,510.00	1,660.00	1,580.00	36,240	32,204	36,024
PA	231.00	221.00	218.00	15,741	19,190	19,608
TX	900.00	919.00	1,250.00	5,220	7,812	10,625
VA	1,300.00	1,300.00	1,370.00	4,420	4,420	6,371
WA						
All Types	420.00	456.00	342.00	144,336	121,855	141,950
Wine	920.00	925.00	930.00	103,040	98,975	102,300
Juice <sup>2</sup>	178.00	143.00		41,296	22,880	
US	402.00	483.00	432.00	2,609,289	3,010,958	3,013,418

<sup>1</sup> Fresh equivalent of dried and not dried.

<sup>2</sup> Official estimates of price and value for 2005 are not published.

**Grapes: Fresh and Processed Utilization, and Price  
by Type, State, and United States, 2003-2005**

Utilization, State, and Type	Fresh and Processed Utilization					
	Quantity			Price per Ton		
	2003	2004	2005	2003	2004	2005
	<i>Tons</i>	<i>Tons</i>	<i>Tons</i>	<i>Dollars</i>	<i>Dollars</i>	<i>Dollars</i>
Fresh						
CA						
All Types	792,000	876,000	940,000	683.00	764.00	606.00
Wine	45,000	40,000	50,000	300.00	510.00	510.00
Table	575,000	644,000	682,000	690.00	790.00	435.00
Raisin	172,000	192,000	208,000	760.00	730.00	1,190.00
MI	500	500	700	800.00	800.00	800.00
MO	60	80	60	620.00	710.00	740.00
NY	3,000	2,000	3,000	714.00	678.00	680.00
NC	300	200	200	1,630.00	1,650.00	1,800.00
OH	100	100	100	580.00	1,040.00	820.00
PA	1,000	500	500	744.00	650.00	670.00
Oth Sts	8,500	3,200	2,810	1,190.00	1,080.00	1,420.00
US	805,460	882,580	947,370	689.00	765.00	609.00
Processed						
CA						
All Types	4,994,000	4,747,000	5,190,000	357.00	441.00	416.00
Wine	2,864,000	2,775,000	3,150,000	534.00	571.00	571.00
Table	103,000	126,000	148,000	105.00	208.00	87.20
Raisin	2,027,000	1,846,000	1,892,000	120.00	262.00	183.00
MI	80,000	57,500	99,300	259.00	237.00	209.00
MO	2,970	3,550	3,840	610.00	720.00	774.00
NY	149,000	140,000	175,000	242.00	223.00	184.00
NC	2,500	3,300	3,700	1,000.00	920.00	890.00
OH	6,900	4,700	8,400	346.00	403.00	312.00
OR <sup>1</sup>	24,000	19,400	22,800	1,510.00	1,660.00	1,580.00
PA	67,000	86,300	89,500	224.00	219.00	215.00
TX <sup>1</sup>	5,800	8,500	8,500	900.00	919.00	1,250.00
VA	3,400	3,400	4,650	1,300.00	1,300.00	1,370.00
WA						
All Types	344,000	267,000	415,000	420.00	456.00	342.00
Wine	112,000	107,000	110,000	920.00	925.00	930.00
Juice <sup>2</sup>	232,000	160,000	305,000	178.00	143.00	
Oth Sts	4,600	6,700	3,590	419.00	441.00	676.00
US	5,684,170	5,347,350	6,024,280	361.00	437.00	404.00

<sup>1</sup> Includes small quantities sold fresh.

<sup>2</sup> Official estimate of price for 2005 is not published.



**Grapes: Fresh and Processed Value by Type,  
State, and United States, 2003-2005**

Utilization, State, and Type	Fresh and Processed Utilization		
	Value of Utilized Production		
	2003	2004	2005
	<i>1,000 Dollars</i>	<i>1,000 Dollars</i>	<i>1,000 Dollars</i>
Fresh			
CA			
All Types	540,970	669,320	569,690
Wine	13,500	20,400	25,500
Table	396,750	508,760	296,670
Raisin	130,720	140,160	247,520
MI	400	400	560
MO	37	57	44
NY	2,142	1,356	2,040
NC	489	330	360
OH	58	104	82
PA	744	325	335
Oth Sts	10,128	3,456	3,998
US	554,968	675,348	577,109
Processed			
CA			
All Types	1,783,680	2,095,214	2,157,716
Wine	1,529,376	1,584,525	1,798,650
Table	10,857	26,249	12,906
Raisin	243,447	484,440	346,160
MI	20,686	13,615	20,791
MO	1,812	2,555	2,973
NY	36,111	31,180	32,250
NC	2,500	3,036	3,293
OH	2,390	1,896	2,617
OR <sup>1</sup>	36,240	32,204	36,024
PA	14,997	18,865	19,273
TX <sup>1</sup>	5,220	7,812	10,625
VA	4,420	4,420	6,371
WA			
All Types	144,336	121,855	141,950
Wine	103,040	98,975	102,300
Juice <sup>2</sup>	41,296	22,880	
Oth Sts	1,929	2,958	2,426
US	2,054,321	2,335,610	2,436,309

<sup>1</sup> Includes small quantities sold fresh.

<sup>2</sup> Official estimate of value for 2005 is not published.

**Grapes: Processed Utilization, Use, and Price  
by Type, State, and United States, 2003-2005**

Use and State	Processed Utilization					
	Quantity			Price per Ton		
	2003	2004	2005	2003	2004	2005
	<i>Tons</i>	<i>Tons</i>	<i>Tons</i>	<i>Dollars</i>	<i>Dollars</i>	<i>Dollars</i>
Canned						
CA						
Raisin	27,000	25,000	16,000	280.00	300.00	290.00
US	27,000	25,000	16,000	280.00	300.00	290.00
Juice <sup>1 2 3</sup>						
MI	78,000	54,300	94,700	242.00	198.00	
NY	106,000	103,000	135,000	221.00	191.00	
OH	5,400	3,200	7,000	252.00	198.00	
PA	56,500	73,000	73,200	216.00	185.00	
WA	232,000	160,000	305,000	178.00	143.00	
Oth Sts	850	3,720	310	319.00	290.00	
US	478,750	397,220	615,210	204.00	173.00	
Wine						
CA						
All Types	3,370,000	3,615,000	3,849,000	468.00	485.00	492.00
Wine	2,864,000	2,775,000	3,150,000	534.00	571.00	571.00
Table	84,000	113,000	133,000	91.40	199.00	70.00
Raisin	422,000	727,000	566,000	95.10	200.00	150.00
MI	2,000	3,200	4,600	905.00	895.00	1,020.00
MO	2,920	3,530	3,830	610.00	720.00	775.00
NY	43,000	37,000	40,000	295.00	311.00	219.00
NC	2,500	3,300	3,700	1,000.00	920.00	890.00
OH	1,500	1,500	1,400	686.00	841.00	959.00
OR <sup>2</sup>	24,000	19,400	22,800	1,510.00	1,660.00	1,580.00
PA	10,500	13,300	16,300	266.00	403.00	410.00
TX <sup>2</sup>	5,800	8,500	8,500	900.00	919.00	1,250.00
VA	3,400	3,400	4,650	1,300.00	1,300.00	1,370.00
WA	112,000	107,000	110,000	920.00	925.00	930.00
Oth Sts <sup>4</sup>	3,800	3,000	3,290	444.00	631.00	692.00
US	3,581,420	3,818,130	4,068,070	489.00	504.00	511.00
Dried (Fr Basis)						
CA						
All Types	1,597,000	1,107,000	1,325,000	125.00	303.00	196.00
Table	19,000	13,000	15,000	167.00	289.00	240.00
Raisin	1,578,000	1,094,000	1,310,000	124.00	303.00	196.00
US	1,597,000	1,107,000	1,325,000	125.00	303.00	196.00

<sup>1</sup> Includes small quantities of other processed (jam, jelly, etc.).

<sup>2</sup> Includes small quantities for other uses.

<sup>3</sup> Official estimates of prices for 2005 are not published.

<sup>4</sup> AZ grapes dried for raisins in 2003 are included to avoid disclosure of individual operations. No AZ grapes dried for raisins in 2004 and 2005.

**Concord Grapes: Processed Utilization by State  
and United States, 2003-2005**

State	Processed Utilization		
	2003	2004	2005
	<i>Tons</i>	<i>Tons</i>	<i>Tons</i>
MI	51,000	34,900	65,900
NY	104,000	99,300	137,000
OH	5,100	3,000	6,800
PA	55,800	78,000	78,000
WA	212,000	140,000	275,000
Oth Sts	900	920	460
US	428,800	356,120	563,160

**Concord Grapes for Processing: Marketing Year Average Prices,  
New York and Pennsylvania, 2003-2005 <sup>1</sup>**

State	2003	2004	2005
	<i>Dollars per Ton</i>	<i>Dollars per Ton</i>	<i>Dollars per Ton</i>
NY	200	193	
PA	211	188	

<sup>1</sup> Official estimates of price for 2005 are not published.

**Niagara Grapes: Processed Utilization by State  
and United States, 2003-2005**

State	Processed Utilization		
	2003	2004	2005
	<i>Tons</i>	<i>Tons</i>	<i>Tons</i>
MI	27,000	19,400	28,800
NY	18,000	19,800	18,000
OH	500	450	550
PA	6,200	3,600	6,000
WA	20,000	20,000	30,000
US	71,700	63,250	83,350

**Peaches: Bearing Acreage and Yield by Type,  
State, and United States, 2003-2005**

State	Bearing Acreage			Yield per Acre <sup>1</sup>		
	2003	2004	2005	2003	2004	2005
	<i>Acres</i>	<i>Acres</i>	<i>Acres</i>	<i>Tons</i>	<i>Tons</i>	<i>Tons</i>
AL	3,000	3,000	2,800	1.50	4.67	4.29
AR	1,600	1,400	1,500	2.78	3.21	3.30
CA						
Freestone	37,000	37,000	36,000	11.20	11.80	10.70
CO	1,900	2,000	2,100	5.53	6.50	5.71
CT	400	400	400	1.88	2.13	1.75
GA	12,000	12,000	11,500	4.58	4.38	3.48
ID	820	920	920	7.93	9.78	8.70
IL	1,600	1,600	1,600	6.41	6.63	7.00
IN <sup>2</sup>	650	650		2.62	1.85	
KY	280	270	280	3.21	2.96	2.68
LA	290	280	270	2.76	3.04	2.41
MD	1,100	1,100	1,000	3.86	3.73	4.20
MA	380	380	380	3.95	2.53	2.63
MI	5,000	5,200	5,000	4.70	3.60	2.24
MO	1,600	1,600	1,500	3.13	2.81	3.87
NJ	8,000	7,600	7,400	4.38	4.28	4.73
NY	1,700	1,700	1,700	3.82	3.53	2.35
NC	1,200	1,200	1,200	2.50	2.92	5.00
OH	1,300	1,300	1,300	4.35	3.92	1.62
OK	850	840	900	1.76	2.38	2.22
OR	800	800	800	2.81	4.13	3.50
PA	4,500	4,500	4,500	8.11	5.11	5.91
SC	15,000	14,500	14,000	3.33	4.83	5.36
TN	500	500	500	3.50	3.90	4.00
TX	6,500	7,000	6,000	0.54	1.74	1.46
UT	1,300	1,300	1,300	3.46	3.85	3.62
VA	1,260	1,260	1,260	3.97	3.57	3.73
WA	2,900	2,900	2,900	6.72	7.41	7.59
WV	1,100	970	950	5.68	6.19	5.79
Total Above	114,530	114,170	109,960	6.32	6.73	6.35
CA						
Clingstone	31,000	32,000	30,400	17.30	16.80	15.90
US	145,530	146,170	140,360	8.65	8.94	8.43

<sup>1</sup> Yield is based on total production.

<sup>2</sup> Estimates discontinued in 2005.

**Peaches: Bearing Acreage and Yield by Type,  
California, 2003-2005**

Type	Bearing Acreage			Yield per Acre <sup>1</sup>		
	2003	2004	2005	2003	2004	2005
	<i>Acres</i>	<i>Acres</i>	<i>Acres</i>	<i>Tons</i>	<i>Tons</i>	<i>Tons</i>
Freestone	37,000	37,000	36,000	11.20	11.80	10.70
Clingstone	31,000	32,000	30,400	17.30	16.80	15.90
Total	68,000	69,000	66,400	14.00	14.10	13.10

<sup>1</sup> Yield is based on total production.

**Peaches: Total and Utilized Production, by Type,  
State, and United States, 2003-2005**

State	Total Production			Utilized Production		
	2003	2004	2005	2003	2004	2005
	<i>Tons</i>	<i>Tons</i>	<i>Tons</i>	<i>Tons</i>	<i>Tons</i>	<i>Tons</i>
AL	4,500	14,000	12,000	3,850	10,000	10,000
AR	4,450	4,500	4,950	4,000	3,700	4,650
CA						
Freestone	413,000	436,000	385,000	413,000	390,000	385,000
CO	10,500	13,000	12,000	10,000	12,000	11,000
CT	750	850	700	750	850	700
GA	55,000	52,500	40,000	53,000	49,500	37,000
ID	6,500	9,000	8,000	6,300	8,500	8,000
IL	10,250	10,600	11,200	9,900	9,500	11,000
IN <sup>1</sup>	1,700	1,200		1,650	1,200	
KY	900	800	750	900	750	650
LA	800	850	650	750	800	650
MD	4,250	4,100	4,200	4,250	4,100	4,200
MA	1,500	960	1,000	1,350	950	990
MI	23,500	18,700	11,200	21,500	18,700	11,200
MO	5,000	4,500	5,800	5,000	4,500	5,800
NJ	35,000	32,500	35,000	31,000	30,500	33,700
NY	6,500	6,000	4,000	6,000	5,900	3,850
NC	3,000	3,500	6,000	3,000	3,500	6,000
OH	5,650	5,100	2,100	5,500	5,000	2,100
OK	1,500	2,000	2,000	1,400	2,000	1,860
OR	2,250	3,300	2,800	1,750	3,200	2,700
PA	36,500	23,000	26,600	35,500	22,700	26,600
SC	50,000	70,000	75,000	40,000	55,000	45,000
TN	1,750	1,950	2,000	1,600	1,800	1,800
TX	3,500	12,200	8,750	3,350	9,900	8,350
UT	4,500	5,000	4,700	4,350	4,550	4,420
VA	5,000	4,500	4,700	4,600	4,400	4,630
WA	19,500	21,500	22,000	19,500	21,500	22,000
WV	6,250	6,000	5,500	5,900	5,800	5,300
Total Above	723,500	768,110	698,600	699,650	690,800	659,150
CA						
Clingstone	536,000	539,000	484,000	505,500	539,000	484,000
US	1,259,500	1,307,110	1,182,600	1,205,150	1,229,800	1,143,150

<sup>1</sup> Estimates discontinued in 2005.

**Peaches: Total and Utilized Production, by Type,  
California, 2003-2005**

Type	Total Production			Utilized Production		
	2003	2004	2005	2003	2004	2005
	<i>Tons</i>	<i>Tons</i>	<i>Tons</i>	<i>Tons</i>	<i>Tons</i>	<i>Tons</i>
Freestone	413,000	436,000	385,000	413,000	390,000	385,000
Clingstone	536,000	539,000	484,000	505,500	539,000	484,000
Total	949,000	975,000	869,000	918,500	929,000	869,000

**Peaches: Price and Value by Type, State,  
and United States, 2003-2005**

State	Price per Ton			Value of Utilized Production		
	2003	2004	2005	2003	2004	2005
	<i>Dollars</i>	<i>Dollars</i>	<i>Dollars</i>	<i>1,000 Dollars</i>	<i>1,000 Dollars</i>	<i>1,000 Dollars</i>
AL	940.00	661.00	808.00	3,619	6,610	8,080
AR	942.00	842.00	1,100.00	3,769	3,117	5,130
CA						
Freestone	336.00	281.00	408.00	138,746	109,760	157,048
CO	1,220.00	944.00	1,080.00	12,160	11,328	11,880
CT	1,400.00	1,600.00	1,600.00	1,050	1,360	1,120
GA	559.00	667.00	743.00	29,642	33,017	27,476
ID	713.00	752.00	967.00	4,491	6,388	7,735
IL	1,020.00	770.00	1,250.00	10,138	7,315	13,780
IN <sup>1</sup>	1,430.00	1,380.00		2,363	1,656	
KY	1,110.00	1,290.00	1,000.00	1,003	968	650
LA	1,630.00	1,420.00	1,730.00	1,223	1,136	1,125
MD	947.00	558.00	919.00	4,024	2,289	3,860
MA	1,600.00	1,500.00	1,500.00	2,160	1,425	1,485
MI	362.00	549.00	607.00	7,790	10,274	6,802
MO	860.00	780.00	980.00	4,300	3,510	5,684
NJ	780.00	760.00	916.00	24,180	23,180	30,869
NY	703.00	717.00	709.00	4,218	4,232	2,728
NC	800.00	840.00	850.00	2,400	2,940	5,100
OH	996.00	1,000.00	1,100.00	5,478	5,005	2,310
OK	1,240.00	1,030.00	1,010.00	1,730	2,060	1,879
OR	1,120.00	867.00	966.00	1,957	2,774	2,608
PA	659.00	710.00	734.00	23,397	16,114	19,533
SC	723.00	557.00	703.00	28,925	30,623	31,641
TN	1,030.00	1,070.00	1,280.00	1,645	1,926	2,304
TX	1,460.00	1,520.00	1,680.00	4,891	15,097	14,047
UT	789.00	627.00	775.00	3,431	2,853	3,424
VA	756.00	660.00	800.00	3,478	2,904	3,704
WA	473.00	349.00	535.00	9,228	7,502	11,777
WV	740.00	478.00	724.00	4,366	2,772	3,837
Total Above	494.00	463.00	588.00	345,802	320,135	387,616
CA						
Clingstone	215.00	263.00	252.00	108,484	141,494	122,129
US	377.00	375.00	446.00	454,286	461,629	509,745

<sup>1</sup> Estimates discontinued in 2005.

**Peaches: Price and Value by Type,  
California, 2003-2005**

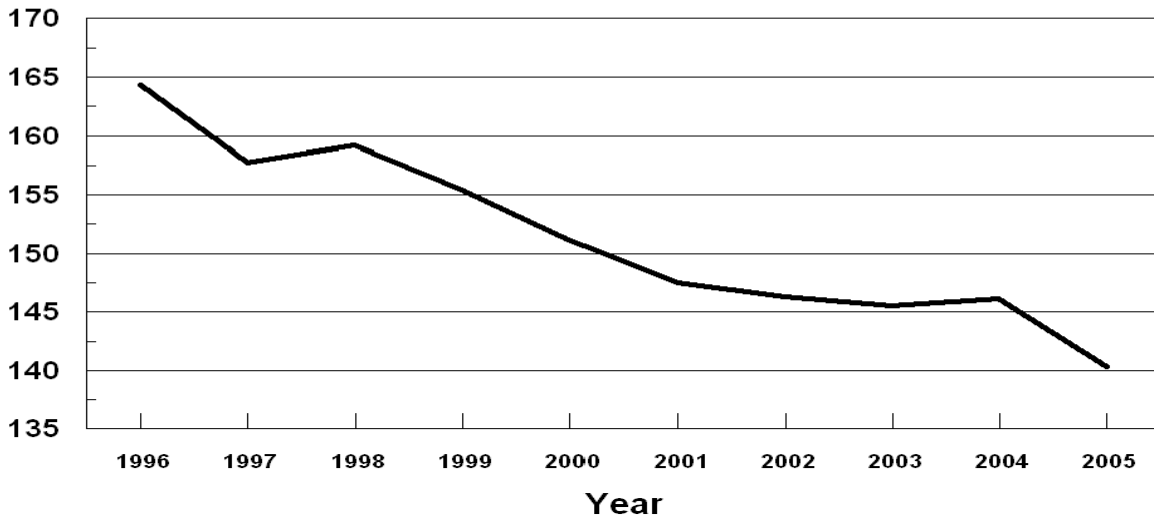
Type	Price per Ton			Value of Utilized Production		
	2003	2004	2005	2003	2004	2005
	<i>Dollars</i>	<i>Dollars</i>	<i>Dollars</i>	<i>1,000 Dollars</i>	<i>1,000 Dollars</i>	<i>1,000 Dollars</i>
Freestone	336.00	281.00	408.00	138,746	109,760	157,048
Clingstone	215.00	263.00	252.00	108,484	141,494	122,129
Total	269.00	270.00	321.00	247,230	251,254	279,177

# U. S. Peaches

## Bearing Acres

1996 - 2005

(000) Acres

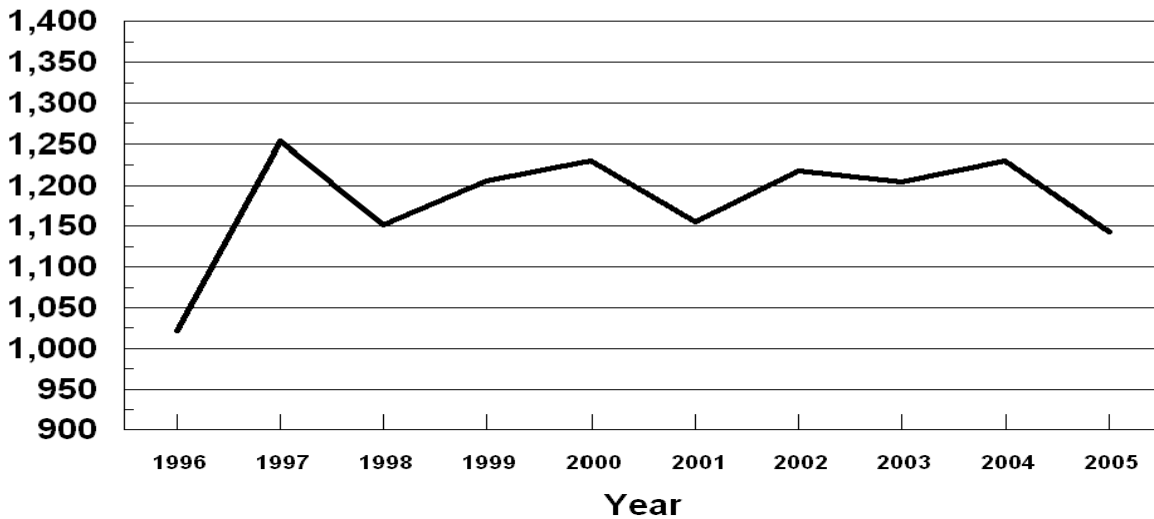


# U. S. Peaches

## Utilized Production

1996 - 2005

Tons



**Peaches: Fresh and Processed Utilization, and Price  
by Type, State, and United States, 2003-2005**

Use and State	Fresh and Processed Utilization					
	Quantity			Price per Unit		
	2003	2004	2005	2003	2004	2005
	<i>Tons</i>	<i>Tons</i>	<i>Tons</i>	<i>Dollars per Ton</i>	<i>Dollars per Ton</i>	<i>Dollars per Ton</i>
Fresh						
AL	3,850	10,000	10,000	940.00	661.00	808.00
CA						
Freestone	282,300	259,000	252,000	406.00	341.00	540.00
CT	750	850	700	1,400.00	1,600.00	1,600.00
IL	9,900	9,500	10,800	1,020.00	770.00	1,250.00
IN <sup>1</sup>	1,650	1,200		1,430.00	1,380.00	
KY	900	750	650	1,110.00	1,290.00	1,000.00
LA	750	800	650	1,630.00	1,420.00	1,730.00
MD	4,200	4,050	4,000	956.00	563.00	950.00
MA	1,350	950	990	1,600.00	1,500.00	1,500.00
MI	12,500	12,500	7,000	400.00	660.00	780.00
MO	5,000	4,500	5,800	860.00	780.00	980.00
NY	4,250	3,600	1,950	840.00	920.00	900.00
OH	5,500	5,000	2,100	996.00	1,000.00	1,100.00
OK	1,400	2,000	1,860	1,240.00	1,030.00	1,010.00
SC	35,000	52,500	42,000	790.00	573.00	733.00
TN	1,600	1,800	1,800	1,030.00	1,070.00	1,280.00
TX	3,350	9,800	8,230	1,460.00	1,540.00	1,690.00
VA	4,600	4,400	4,630	756.00	660.00	800.00
WV	5,900	5,800	5,300	740.00	478.00	724.00
Oth Sts	158,000	146,600	143,090	716.00	733.00	866.00
US	542,750	535,600	503,550	581.00	548.00	718.00
	<i>Tons</i>	<i>Tons</i>	<i>Tons</i>	<i>Dollars per Ton</i>	<i>Dollars per Ton</i>	<i>Dollars per Ton</i>
Processed						
CA						
Clingstone	505,500	539,000	484,000	215.00	263.00	252.00
Freestone <sup>2</sup>	130,700	131,000	133,000	185.00	164.00	158.00
MI	9,000	6,200	4,200	310.00	326.00	320.00
NY	1,750	2,300	1,900	370.00	400.00	512.00
SC	5,000	2,500	3,000	255.00	216.00	285.00
Oth Sts	10,450	13,200	13,500	144.00	128.00	154.00
US <sup>3</sup>	662,400	694,200	639,600	210.00	242.00	232.00

<sup>1</sup> Estimates discontinued in 2005.

<sup>2</sup> CA Freestone quantity and value include dried, price excludes dried.

<sup>3</sup> US quantity, price, and value include dried.



**Peaches: Fresh and Processed Value by State  
and United States, 2003-2005**

Use and State	Fresh and Processed Utilization		
	Value of Utilized Production		
	2003	2004	2005
	<i>1,000 Dollars</i>	<i>1,000 Dollars</i>	<i>1,000 Dollars</i>
Fresh			
AL	3,619	6,610	8,080
CA			
Freestone	114,614	88,319	136,080
CT	1,050	1,360	1,120
IL	10,138	7,315	13,500
IN <sup>1</sup>	2,363	1,656	
KY	1,003	968	650
LA	1,223	1,136	1,125
MD	4,015	2,280	3,800
MA	2,160	1,425	1,485
MI	5,000	8,250	5,460
MO	4,300	3,510	5,684
NY	3,570	3,312	1,755
OH	5,478	5,005	2,310
OK	1,730	2,060	1,879
SC	27,650	30,083	30,786
TN	1,645	1,926	2,304
TX	4,891	15,092	13,909
VA	3,478	2,904	3,704
WV	4,366	2,772	3,837
Oth Sts	113,162	107,538	123,927
US	315,455	293,521	361,395
Processed			
CA			
Clingstone	108,484	141,494	122,129
Freestone <sup>2</sup>	24,132	21,441	20,968
MI	2,790	2,024	1,342
NY	648	920	973
SC	1,275	540	855
Oth Sts	1,502	1,689	2,083
US <sup>3</sup>	138,831	168,108	148,350

<sup>1</sup> Estimates discontinued in 2005.

<sup>2</sup> CA Freestone quantity and value include dried, price excludes dried.

<sup>3</sup> US quantity, price, and value include dried.

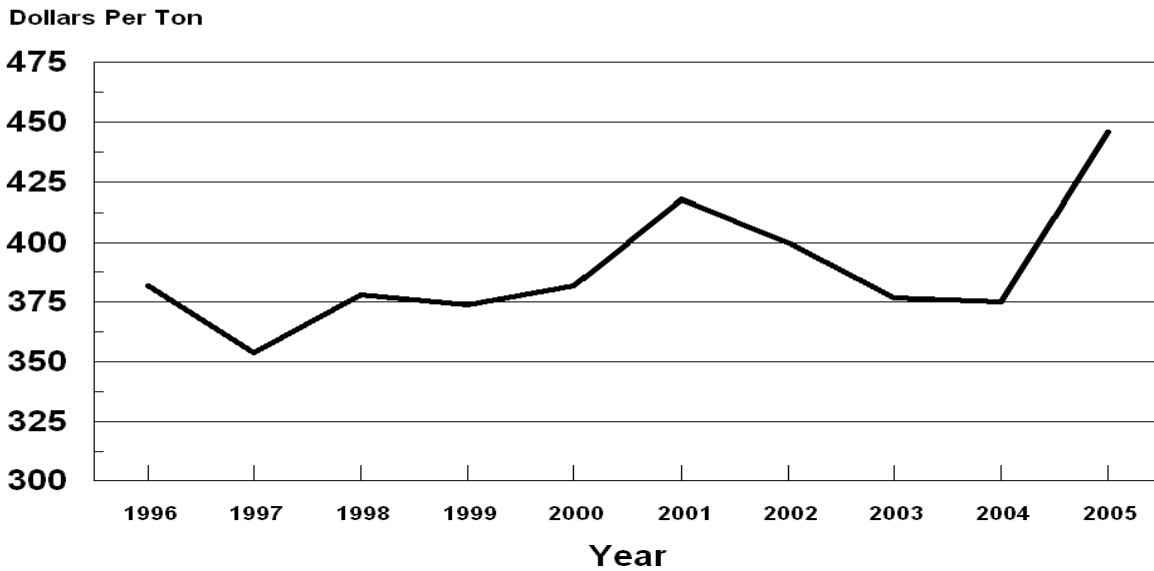
**Peaches: Processed Utilization, and Price by Use,  
State, and United States, 2003-2005**

Use and State	Processed Utilization					
	Quantity			Price per Ton		
	2003	2004	2005	2003	2004	2005
	<i>Tons</i>	<i>Tons</i>	<i>Tons</i>	<i>Dollars</i>	<i>Dollars</i>	<i>Dollars</i>
Canned						
CA						
Clingstone	478,500	505,000	459,000	217.00	270.00	256.00
NY						
Freestone	1,750	1,750	1,900	370.00	420.00	512.00
Oth Sts	18,250	17,190	15,660	234.00	234.00	258.00
US	498,500	523,940	476,560	218.00	269.00	258.00
Frozen						
CA						
Freestone	95,950	86,600	82,800	211.00	211.00	202.00
NY						
Freestone		550			336.00	
Oth Sts	15,500	18,600	16,600	310.00	338.00	335.00
US	111,450	105,750	99,400	225.00	215.00	205.00
Dried						
CA						
Freestone	10,150	10,400	12,700	47.00	32.00	46.00
US	10,150	10,400	12,700	47.00	32.00	46.00
Other <sup>1</sup>						
Oth Sts	42,300	54,110	50,940	107.00	48.00	79.00
US	42,300	54,110	50,940	107.00	48.00	79.00

<sup>1</sup> Pickled, wine, brandy, juice, and baby food.

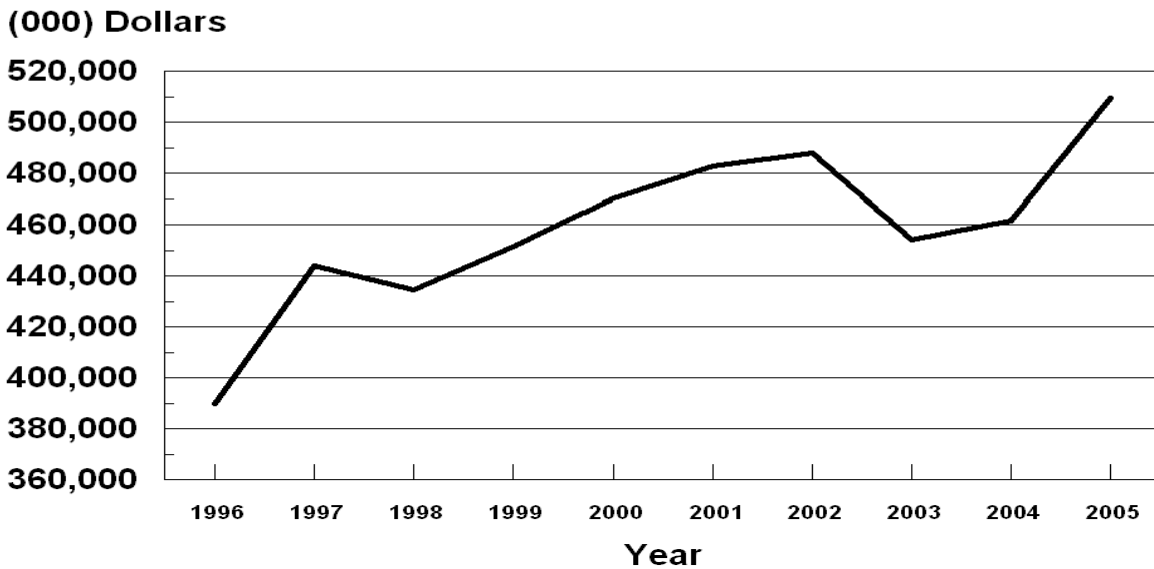
## U.S. Peaches

### Prices Received 1996 - 2005



## U.S. Peaches

### Value of Utilized Production 1996 - 2005



**All Pears: Bearing Acreage, Yield, Production, and Utilization  
by State and United States, 2003-2005 <sup>1</sup>**

State and Year	Bearing Acreage	Yield Per Acre <sup>2</sup>	Production		Utilization	
			Total	Utilized	Fresh	Processed
	<i>Acres</i>	<i>Tons</i>	<i>Tons</i>	<i>Tons</i>	<i>Tons</i>	<i>Tons</i>
CA						
2003	17,300	15.70	272,000	272,000		
2004	17,000	15.90	271,000	271,000		
2005	16,000	12.50	200,000	200,000		
CO						
2003			2,800	2,800		
2004			2,600	2,500		
2005			2,500	2,200		
CT						
2003			1,300	1,270		
2004			900	900		
2005			1,000	1,000		
MI						
2003	800	6.00	4,800	4,300		
2004	800	4.33	3,460	3,400		
2005	800	2.50	2,000	1,970		
NY						
2003	1,400	11.10	15,500	14,800		
2004	1,400	11.80	16,500	13,900		
2005	1,400	6.07	8,500	8,200		
OR						
2003	17,600	11.90	210,000	206,000		
2004	17,400	12.20	212,000	210,000		
2005	17,400	11.30	196,000	196,000		
PA						
2003	900	5.78	5,200	4,900		
2004	900	5.00	4,500	4,400		
2005	800	2.63	2,100	2,100		
UT						
2003	130	3.46	450	380		
2004	130	2.31	300	300		
2005	130	1.73	225	200		
WA						
2003	25,500	16.50	422,000	422,000		
2004	26,300	13.90	366,000	366,000		
2005	26,300	15.20	400,000	400,000		
US <sup>3</sup>						
2003	64,150	14.60	934,050	928,450	559,950	368,500
2004	64,450	13.60	877,260	872,400	513,270	359,130
2005	63,350	12.80	812,325	811,670	512,400	299,270

<sup>1</sup> Missing data not published to avoid disclosure of individual operations.

<sup>2</sup> Yield is based on total production.

<sup>3</sup> Processed mostly canned, but includes small quantities dried and other uses not published separately to avoid disclosure of individual operations.

**All Pears: Price and Value by State  
and United States, 2003-2005 <sup>1</sup>**

State and Year	Price per Ton			Value of Production		
	Fresh	Processed Exc. Dried	All	Fresh	Processed Inc. Dried	All
	<i>Dollars</i>	<i>Dollars</i>	<i>Dollars</i>	<i>1,000 Dollars</i>	<i>1,000 Dollars</i>	<i>1,000 Dollars</i>
CA						
2003			233.00			63,376
2004			297.00			80,432
2005			399.00			79,762
CO						
2003			600.00			1,679
2004			561.00			1,403
2005			455.00			1,002
CT						
2003			1,000.00			1,270
2004			800.00			720
2005			952.00			952
MI						
2003			259.00			1,112
2004			311.00			1,058
2005			423.00			834
NY						
2003			373.00			5,513
2004			386.00			5,370
2005			499.00			4,088
OR						
2003			327.00			67,328
2004			365.00			76,703
2005			376.00			73,750
PA						
2003			697.00			3,414
2004			564.00			2,482
2005			597.00			1,254
UT						
2003			784.00			298
2004			393.00			118
2005			645.00			129
WA						
2003			306.00			129,152
2004			350.00			128,005
2005			384.00			153,469
US <sup>2</sup>						
2003	358.00	197.00	294.00	200,642	72,500	273,142
2004	437.00	201.00	340.00	224,345	71,946	296,291
2005	501.00	194.00	388.00	256,960	58,280	315,240

<sup>1</sup> Missing data not published to avoid disclosure of individual operations.

<sup>2</sup> Processed mostly canned, but includes small quantities dried and other uses not published separately to avoid disclosure of individual operations.

**Pears: Bearing Acreage, Yield, Production, and Utilization  
by Type, State, and United States, 2003-2005 <sup>1</sup>**

Type, State and Year	Bearing Acreage	Yield Per Acre <sup>2</sup>	Production		Utilization	
			Total	Utilized	Fresh	Processed
	<i>Acres</i>	<i>Tons</i>	<i>Tons</i>	<i>Tons</i>	<i>Tons</i>	<i>Tons</i>
<b>Bartlett <sup>3</sup></b>						
<b>CA</b>						
2003	13,000	16.70	217,000	217,000	62,000	155,000
2004	13,000	17.20	223,000	223,000	68,000	155,000
2005	12,000	13.70	164,000	164,000	46,000	118,000
<b>OR</b>						
2003	4,600	11.70	54,000	54,000	27,000	27,000
2004	4,400	14.30	63,000	61,000	28,000	33,000
2005	4,400	13.20	58,000	58,000	28,000	30,000
<b>WA</b>						
2003	11,500	16.10	185,000	185,000	59,000	126,000
2004	11,800	14.50	171,000	171,000	51,000	120,000
2005	11,800	14.40	170,000	170,000	64,000	106,000
<b>Total</b>						
2003	29,100	15.70	456,000	456,000	148,000	308,000
2004	29,200	15.70	457,000	455,000	147,000	308,000
2005	28,200	13.90	392,000	392,000	138,000	254,000
<b>Other <sup>4</sup></b>						
<b>CA</b>						
2003	4,300	12.80	55,000	55,000		
2004	4,000	12.00	48,000	48,000		
2005	4,000	9.00	36,000	36,000		
<b>OR</b>						
2003	13,000	12.00	156,000	152,000		
2004	13,000	11.50	149,000	149,000		
2005	13,000	10.60	138,000	138,000		
<b>WA</b>						
2003	14,000	16.90	237,000	237,000		
2004	14,500	13.40	195,000	195,000		
2005	14,500	15.90	230,000	230,000		
<b>Total</b>						
2003	31,300	14.30	448,000	444,000	390,400	53,600
2004	31,500	12.40	392,000	392,000	347,000	45,000
2005	31,500	12.80	404,000	404,000	363,000	41,000

<sup>1</sup> Missing data not published to avoid disclosure of individual operations.

<sup>2</sup> Yield is based on total production.

<sup>3</sup> Processed mostly canned, but includes small quantities dried and other uses not published separately to avoid disclosure of individual operations.

<sup>4</sup> Processed mostly juice, but includes small quantities canned and other uses not published separately to avoid disclosure of individual operations.

**Pears: Price and Value by Type, State,  
and United States, 2003-2005**<sup>1</sup>

Type, State and Year	Price per Ton			Value of Production		
	Fresh	Processed Exc. Dried	All	Fresh	Processed Inc. Dried	All
	<i>Dollars</i>	<i>Dollars</i>	<i>Dollars</i>	<i>1,000 Dollars</i>	<i>1,000 Dollars</i>	<i>1,000 Dollars</i>
<b>Bartlett</b> <sup>2</sup>						
CA						
2003	190.00	226.00	216.00	11,780	35,070	46,850
2004	261.00	251.00	252.00	17,748	38,540	56,288
2005	424.00	253.00	301.00	19,504	29,802	49,306
OR						
2003	457.00	211.00	334.00	12,339	5,707	18,046
2004	514.00	201.00	345.00	14,392	6,633	21,025
2005	522.00	178.00	344.00	14,616	5,326	19,942
WA						
2003	525.00	225.00	321.00	30,975	28,350	59,325
2004	530.00	196.00	296.00	27,030	23,505	50,535
2005	584.00	193.00	340.00	37,376	20,482	57,858
Total						
2003	372.00	224.00	272.00	55,094	69,127	124,221
2004	403.00	224.00	281.00	59,170	68,678	127,848
2005	518.00	219.00	324.00	71,496	55,610	127,106
<b>Other</b> <sup>3</sup>						
CA						
2003			300.00			16,526
2004			503.00			24,144
2005			846.00			30,456
OR						
2003			324.00			49,282
2004			374.00			55,678
2005			390.00			53,808
WA						
2003			295.00			69,827
2004			397.00			77,470
2005			416.00			95,611
Total						
2003	343.00	34.70	305.00	133,777	1,858	135,635
2004	449.00	33.90	401.00	155,768	1,524	157,292
2005	492.00	35.40	445.00	178,422	1,453	179,875

<sup>1</sup> Missing data not published to avoid disclosure of individual operations.

<sup>2</sup> Processed mostly canned, but includes small quantities dried and other uses not published separately to avoid disclosure of individual operations.

<sup>3</sup> Processed mostly juice, but includes small quantities canned and other uses not published separately to avoid disclosure of individual operations.

**Hawaii Crops: Acreage Harvested, Yield, Utilized  
Production, and Utilization, 2003-2005**

Crop and Year	Acreage Harvested	Yield Per Acre	Utilized Production	Utilization	
				Fresh	Processed
	<i>Acres</i>	<i>1,000 Pounds</i>	<i>1,000 Pounds</i>	<i>1,000 Pounds</i>	<i>1,000 Pounds</i>
Bananas					
2003	1,350	16.7	22,500	22,500	
2004	1,000	16.5	16,500	16,500	
2005 <sup>1</sup>					
Guavas					
2003	530	12.6	6,700		6,700
2004	500	16.2	8,100		8,100
2005 <sup>2</sup>					
Papayas					
2003	1,565	27.2	42,600	40,800	1,800
2004	1,235	29.0	35,800	34,100	1,700
2005	1,450	22.4	32,500	30,200	2,300
	<i>Acres</i>	<i>1,000 Pounds</i>	<i>Tons</i>	<i>Tons</i>	<i>Tons</i>
Pineapples <sup>3</sup>					
2003	16,000		300,000	130,000	170,000
2004	13,000		220,000	104,000	116,000
2005	14,000		212,000	106,000	106,000

<sup>1</sup> Missing data not published to avoid disclosure of individual operations.

<sup>2</sup> Acreage, yield, and production estimates for 2005 will be published on May 12, 2006. Fresh and processed utilization estimates for 2005 will be published on July 6, 2006.

<sup>3</sup> Acreage is total acres in crop, not harvested acreage. Yield is not estimated. Production and processed utilization on a fresh weight basis.



**Hawaii Crops: Price and Value, 2003-2005**

Crop and Year	Price			Value of Production		
	Fresh	Processed	All	Fresh	Processed	Total
	<i>Dollars per Pound</i>	<i>Dollars per Pound</i>	<i>Dollars per Pound</i>	<i>1,000 Dollars</i>	<i>1,000 Dollars</i>	<i>1,000 Dollars</i>
Bananas						
2003	0.410		0.410	9,225		9,225
2004	0.490		0.490	8,085		8,085
2005 <sup>1</sup>						
Guavas						
2003		0.138	0.138		925	925
2004		0.144	0.144		1,166	1,166
2005 <sup>2</sup>						
Papayas						
2003	0.319	0.030	0.307	13,015	54	13,069
2004	0.361	0.030	0.345	12,310	51	12,361
2005	0.361	0.030	0.338	10,902	69	10,971
	<i>Dollars per Ton</i>	<i>Dollars per Ton</i>	<i>Dollars per Ton</i>			
Pineapples <sup>3</sup>						
2003	604.00	135.00	338.00	78,520	22,950	101,470
2004	634.00	148.00	378.00	65,936	17,168	83,104
2005	600.00	148.00	374.00	63,600	15,688	79,288

<sup>1</sup> Missing data not published to avoid disclosure of individual operations.

<sup>2</sup> Estimates for 2005 will be published on July 6, 2006.

<sup>3</sup> Processed price is for fresh fruit delivered to processing plant door. Fresh price is for fruit at wholesale establishments for local sales and at shippers dock for mainland and foreign sales.

**Apples: Unutilized Production by State  
and United States, 2003-2005**

Crop and State	Unharvested Production			Harvested Not Sold		
	2003	2004	2005	2003	2004	2005
	<i>Million Pounds</i>	<i>Million Pounds</i>	<i>Million Pounds</i>	<i>Million Pounds</i>	<i>Million Pounds</i>	<i>Million Pounds</i>
Apples						
AZ			0.2			
AR <sup>1</sup>	0.1	0.7			0.1	
CA				10.0		
CO		1.0	4.0	1.0		
CT	1.5	0.5	0.5		0.5	
GA	0.1					
IL	4.9	4.9	9.9	1.7	0.3	0.6
IN	3.0	2.0	12.5			
IA	1.3	0.5	0.2			
KS <sup>1</sup>	0.7	0.5		0.1	0.1	
KY	0.3	0.6	0.7	0.1	0.1	0.1
ME	2.5	2.5	1.5	1.5	1.5	
MD	0.1	0.1	0.1	1.5	1.0	0.1
MA	4.0	3.5	2.5	1.5	1.5	
MN	6.2	4.1	4.6	1.0	1.0	1.4
MO			2.0		1.0	
NH	1.0	1.0	1.0	0.5	1.5	
NJ		1.0			1.0	
NM <sup>1</sup>		1.3		0.2	0.8	
NY	10.0		20.0			
NC	5.0	23.0	10.0			
OH	2.0		1.0			
OR	1.0	3.0				
PA		5.0	5.0			
RI	0.3		0.2		0.1	
SC	1.4	2.9	0.1	0.1	0.1	1.4
TN	0.4	0.5	1.0	0.1		
UT	0.5		0.2		0.6	0.7
VT	3.5	2.5	2.5	1.0	1.0	
VA	8.0		3.0		3.0	
WV	2.0	1.0	1.0			
WI	8.0	2.0	2.5	2.0		
US	67.8	64.1	86.2	22.3	15.2	4.3

<sup>1</sup> Estimates discontinued in 2005.

**Miscellaneous Crops: Unutilized Production  
by State and United States, 2003-2005**

Crop and State	Unharvested Production			Harvested Not Sold		
	2003	2004	2005	2003	2004	2005
	<i>Tons</i>	<i>Tons</i>	<i>Tons</i>	<i>Tons</i>	<i>Tons</i>	<i>Tons</i>
Peaches						
AL	450	3,360	1,050	200	640	950
AR	350	650	150	100	150	150
CA						
Freestone		2,000			44,000	
Clingstone				30,500		
CO		500	500	500	500	500
GA	1,000	1,000		1,000	2,000	3,000
ID		500		200		
IL	150	1,000	20	200	100	180
IN <sup>1</sup>	50					
KY		50	100			
LA	50	50				
MA	150	10	10			
MI	1,000			1,000		
NJ	2,500	1,500	1,200	1,500	500	100
NY	500		150		100	
OH	150	100				
OK	50		140	50		
OR	500	100	100			
PA	1,000	300				
SC	3,500	2,500	25,000	6,500	12,500	5,000
TN	100	150	200	50		
TX	50	2,000	290	100	300	110
UT	50	450	170	100		110
VA	150	50	70	250	50	
WV				350	200	200
US	11,750	16,270	29,150	42,600	61,040	10,300
Nectarines						
CA		2,000			15,000	
	<i>Million Pounds</i>	<i>Million Pounds</i>	<i>Million Pounds</i>	<i>Million Pounds</i>	<i>Million Pounds</i>	<i>Million Pounds</i>
Cherries (Tart)						
UT			2			
	<i>Barrels<sup>2</sup></i>	<i>Barrels<sup>2</sup></i>	<i>Barrels<sup>2</sup></i>	<i>Barrels<sup>2</sup></i>	<i>Barrels<sup>2</sup></i>	<i>Barrels<sup>2</sup></i>
Cranberries						
NJ					8,000	

<sup>1</sup> Estimates discontinued in 2005.

<sup>2</sup> A barrel weighs 100 pounds.

**Miscellaneous Crops: Unutilized Production  
by State and United States, 2003-2005**

Crop and State	Unharvested Production			Harvested Not Sold		
	2003	2004	2005	2003	2004	2005
	<i>Tons</i>	<i>Tons</i>	<i>Tons</i>	<i>Tons</i>	<i>Tons</i>	<i>Tons</i>
Apricots						
CA		8,500	5,000			
UT	20	40				5
US	20	8,540	5,000			5
Cherries (Sweet)						
CA				1,700	2,700	4,100
MT	60	70		150	70	50
NY	10	10	50			10
OR		1,000	2,000			1,000
PA <sup>1</sup>		50				
UT			30	200		20
US	70	1,130	2,080	2,050	2,770	5,180
Grapes						
AR	100	300				
CA	75,000					
GA	300	100				
MI	14,000	4,500				
NY	42,000			4,000		
OH	1,100					
OR		4,600	1,800			
PA	16,000			1,000		
TX	200	250	1,200		50	
VA				200	300	250
US	148,700	9,750	3,000	5,200	350	250
Kiwifruit						
CA				1,400	2,000	3,300
Pears						
CO		100	300			
CT	30					
MI	500	60	30			
NY	700	1,600	300		1,000	
OR	4,000	2,000				
PA	300	100				
UT			24	70		1
US	5,530	3,860	654	70	1,000	1
Prunes & Plums						
ID		80	50	20		
MI		470			30	
OR	1,400	5,500				
US	1,400	6,050	50	20	30	
Prunes CA <sup>2</sup>				13,000	1,000	3,000
Plums CA		1,000			11,000	

<sup>1</sup> Estimates discontinued in 2005.

<sup>2</sup> CA prunes are on a dried basis.

**Berries: Unutilized Production by State  
and United States, 2003-2005**

Crop and State	Unharvested Production			Harvested Not Sold		
	2003	2004	2005	2003	2004	2005
	<i>1,000 Pounds</i>	<i>1,000 Pounds</i>	<i>1,000 Pounds</i>	<i>1,000 Pounds</i>	<i>1,000 Pounds</i>	<i>1,000 Pounds</i>
Red Raspberries WA	500					
Cultivated Blueberries						
AL	140	410	140	10		90
AR	100	100	150			
FL	300	400				
IN	100	100				
NJ	1,000					
NY	100	300	100			
US	1,740	1,310	390	10		90
Boysenberries OR			30			
Black Raspberries OR	100					
Loganberries OR		10	70			
Cultivated Blackberries (OR)						
Marion	400		400			
Evergreen	100					
Other	100		100			
All	600		500			

**Apples for Fresh Use: Prices Received, United States  
July 2001 - December 2005<sup>1</sup>**

Year	Jul	Aug	Sep	Oct	Nov	Dec	Jan <sup>2</sup>	Feb	Mar	Apr	May	Jun
	<i>Dollars Per Pound</i>	<i>Dollars Per Pound</i>	<i>Dollars Per Pound</i>	<i>Dollars Per Pound</i>	<i>Dollars Per Pound</i>	<i>Dollars Per Pound</i>	<i>Dollars Per Pound</i>	<i>Dollars Per Pound</i>	<i>Dollars Per Pound</i>	<i>Dollars Per Pound</i>	<i>Dollars Per Pound</i>	<i>Dollars Per Pound</i>
2001	0.151	0.167	0.213	0.247	0.235	0.231	0.218	0.216	0.220	0.218	0.215	0.204
2002	0.207	0.254	0.301	0.301	0.274	0.265	0.255	0.247	0.231	0.230	0.216	0.204
2003	0.208	0.346	0.270	0.278	0.305	0.288	0.297	0.300	0.304	0.298	0.296	0.296
2004	0.300	0.268	0.268	0.261	0.245	0.223	0.215	0.203	0.184	0.173	0.174	0.162
2005	0.157	0.209	0.288	0.286	0.282	0.265						

<sup>1</sup> Equivalent packinghouse-door returns for CA, MI, NY, and WA; price at point of first sale for other States.

<sup>2</sup> January for the following year.

**Apples for Fresh Use: Monthly Average Prices, by State and United States,  
July 2004 - August 2005<sup>1,2</sup>**

State	2004						2005
	Jul	Aug	Sep	Oct	Nov	Dec	Jan
	<i>Dollars per Pound</i>	<i>Dollars per Pound</i>	<i>Dollars per Pound</i>	<i>Dollars per Pound</i>	<i>Dollars per Pound</i>	<i>Dollars per Pound</i>	<i>Dollars per Pound</i>
CA		0.241	0.222	0.250	0.160	0.213	0.154
MI		0.220	0.225	0.215	0.215	0.210	0.190
NY			0.247	0.238	0.223	0.220	0.225
OH		0.320	0.320	0.315	0.310	0.315	0.295
PA		0.175	0.171	0.170	0.172	0.173	0.175
VA		0.270	0.280	0.270	0.260	0.250	0.240
WA	0.300	0.282	0.297	0.272	0.254	0.222	0.213
US	0.300	0.268	0.268	0.261	0.245	0.223	0.215
State	2005						
	Feb	Mar	Apr	May	Jun	Jul	Aug
	<i>Dollars per Pound</i>	<i>Dollars per Pound</i>	<i>Dollars per Pound</i>	<i>Dollars per Pound</i>	<i>Dollars per Pound</i>	<i>Dollars per Pound</i>	<i>Dollars per Pound</i>
CA	0.285	0.335					0.383
MI	0.190	0.185	0.185	0.185	0.175		
NY	0.227	0.222	0.220	0.215	0.255		
OH	0.290	0.290	0.255	0.240			0.350
PA	0.175	0.175	0.175	0.171			0.208
VA	0.230	0.220	0.200				
WA	0.198	0.176	0.163	0.170	0.158	0.157	0.171
US	0.203	0.184	0.173	0.174	0.162	0.157	0.209

<sup>1</sup> Equivalent packinghouse-door returns for CA, MI, NY, and WA; price at point of first sale for other States.

<sup>2</sup> Prices for July and August 2005 are preliminary for all States and the U.S. except WA. These two months represent the start of the 2005 crop marketing season in most States, but in WA they are the final months of the 2004 crop marketing season.

**Peaches for Fresh Use: Monthly Prices Received,  
United States, May 2001-September 2005 <sup>1</sup>**

State	May	Jun	Jul	Aug	Sep
	<i>Dollars per Ton</i>	<i>Dollars per Ton</i>	<i>Dollars per Ton</i>	<i>Dollars per Ton</i>	<i>Dollars per Ton</i>
2001	790	676	576	420	594
2002	962	578	528	486	556
2003	945	509	524	455	489
2004	918	476	412	427	522
2005	756	596	576	743	622

<sup>1</sup> Equivalent packinghouse-door returns for CA and WA; price at point of first sale for other States.

**Pears for Fresh Use: Monthly Prices Received,  
United States, July 2001 - December 2005 <sup>1</sup>**

Year	Jul	Aug	Sep	Oct	Nov	Dec	Jan <sup>2</sup>	Feb	Mar	Apr	May	Jun
	<i>Dollars Per Ton</i>	<i>Dollars Per Ton</i>	<i>Dollars Per Ton</i>	<i>Dollars Per Ton</i>	<i>Dollars Per Ton</i>	<i>Dollars Per Ton</i>	<i>Dollars Per Ton</i>	<i>Dollars Per Ton</i>	<i>Dollars Per Ton</i>	<i>Dollars Per Ton</i>	<i>Dollars Per Ton</i>	<i>Dollars Per Ton</i>
2001	345	338	391	380	356	339	301	288	286	283	272	270
2002	322	316	366	419	402	398	333	322	318	316	319	( <sup>3</sup> )
2003	335	272	293	412	387	384	352	332	336	359	443	( <sup>3</sup> )
2004	325	382	392	438	440	446	455	475	474	479	498	( <sup>3</sup> )
2005	668	591	567	479	509	482						

<sup>1</sup> Equivalent packinghouse-door returns for CA, NY, and WA; price at point of first sale for other States.

<sup>2</sup> January for the following year.

<sup>3</sup> Insufficient sales to establish a price.

**Grapes for Fresh Use: Monthly Prices Received,  
United States, May 2001 - December 2005**

Year	May	Jun	Jul	Aug	Sep	Oct	Nov	Dec
	<i>Dollars Per Ton</i>	<i>Dollars Per Ton</i>	<i>Dollars Per Ton</i>	<i>Dollars Per Ton</i>	<i>Dollars Per Ton</i>	<i>Dollars Per Ton</i>	<i>Dollars Per Ton</i>	<i>Dollars Per Ton</i>
2001	790	1,190	630	600	670	640	640	850
2002	1,000	905	830	650	640	590	610	720
2003	930	970	760	650	620	600	660	730
2004	1,540	830	570	560	680	830	1,030	1,160
2005	1,080	980	560	560	640	630	520	420

**Pears: Equivalent On-tree Returns,  
by State and United States, 2003-2005**

State and Variety	Fresh			Processed			All		
	2003	2004	2005	2003	2004	2005	2003	2004	2005
	<i>Dollars per Ton</i>	<i>Dollars per Ton</i>	<i>Dollars per Ton</i>	<i>Dollars per Ton</i>	<i>Dollars per Ton</i>	<i>Dollars per Ton</i>	<i>Dollars per Ton</i>	<i>Dollars per Ton</i>	<i>Dollars per Ton</i>
Bartlett									
CA	160	181	344	196	171	173	186	172	221
OR	404	450	462	157	130	118	281	277	284
WA	470	433	514	170	135	123	266	224	270
US	336	320	447	188	153	146	235	206	252
Other <sup>1</sup>									
US	290	378	424						

<sup>1</sup> Pears other than Bartlett; missing data unavailable or not published to avoid disclosure.

**Dried Figs: Equivalent Returns for Bulk Fruit at First Delivery Point,  
by Utilization, California, 2003-2005**

	2003	2004	2005 <sup>1</sup>
	<i>Dollars per Ton</i>	<i>Dollars per Ton</i>	<i>Dollars per Ton</i>
Dried Figs			
Standard Grades (Dried Basis)	938	1,010	
Substandard Grades (Dried Basis)	60	60	
All Dried Figs (Dried Basis)	828	897	
All Dried Figs (Fresh Basis)	276	299	

<sup>1</sup> Price estimates for 2005 will be published on July 6, 2006.

**Apricots and Plums: Equivalent Returns,  
California, 2003-2005**

	Equivalent First Delivery Point Returns			Equivalent On-tree Returns		
	2003	2004	2005	2003	2004	2005
	<b>Plums</b>					
	<i>Dollars per Ton</i>	<i>Dollars per Ton</i>	<i>Dollars per Ton</i>	<i>Dollars per Ton</i>	<i>Dollars per Ton</i>	<i>Dollars per Ton</i>
All Sales	418	516	551	335	433	468
	<b>Apricots</b>					
Fresh	492	538	1,100	392	438	1,000
Processing	261	280	280	196	218	218
All Sales	316	334	495	241	259	420



**Grapes: Equivalent First Delivery Point Returns,  
by Utilization and Variety Group, California, 2003-2005 <sup>1</sup>**

Variety and Utilization	2003	2004	2005
	<i>Dollars per Ton</i>	<i>Dollars per Ton</i>	<i>Dollars per Ton</i>
Raisin Varieties Dried by Variety or Type			
Natural Thompson Seedless	528	1,210	
Natural Muscats	515	826	
Natural Sultanas	495	794	
Natural Zante Currents	992	1,310	
Dehydrated, All Types	887	1,420	

<sup>1</sup> Missing data are not available.

**Peaches for Fresh Use: Marketing Year Average Prices and Equivalent Returns  
by State and United States, 2003-2005 <sup>1</sup>**

State	Equivalent Packinghouse-door Returns <sup>2</sup>			Equivalent On-tree Returns		
	2003	2004	2005	2003	2004	2005
	<i>Dollars per Ton</i>	<i>Dollars per Ton</i>	<i>Dollars per Ton</i>	<i>Dollars per Ton</i>	<i>Dollars per Ton</i>	<i>Dollars per Ton</i>
AL	940	661	808			
CA						
Freestone	406	341	540	352	287	486
CT	1,400	1,600	1,600			
GA				342	448	519
IL	1,020	770	1,250			
IN <sup>3</sup>	1,430	1,380				
KY	1,110	1,290	1,000			
LA	1,630	1,420	1,730			
MD	956	563	950			
MA	1,600	1,500	1,500			
MI	400	660	780			
MO	860	780	980			
NY	840	920	900			
OH	996	1,000	1,100			
OK	1,240	1,030	1,010			
SC	790	573	733			
TN	1,030	1,070	1,280			
TX	1,460	1,540	1,690			
VA	756	660	800			
WV	740	478	724			
Oth Sts	716	733	866			
US	581	548	718			

<sup>1</sup> Some missing data are not published to avoid disclosure of individual operations.

<sup>2</sup> "Packinghouse-door" equivalents for CA; all other States are "As Sold."

<sup>3</sup> Estimate discontinued in 2005.

**Nut Crops: Bearing Acreage and Yield by Crop,  
State, and United States, 2003-2005**

Crop and State	Bearing Acreage			Yield per Acre <sup>1</sup>		
	2003	2004	2005	2003	2004	2005
	<i>Acres</i>	<i>Acres</i>	<i>Acres</i>	<i>Tons (In-Shell Basis)</i>	<i>Tons (In-Shell Basis)</i>	<i>Tons (In-Shell Basis)</i>
Hazelnuts OR	28,000	28,400	28,300	1.35	1.32	0.99
Walnuts (English) CA	213,000	217,000	219,000	1.53	1.50	1.62
				<i>Pounds (In-Shell Basis)</i>	<i>Pounds (In-Shell Basis)</i>	<i>Pounds (In-Shell Basis)</i>
Macadamia Nuts HI	17,800	17,800	18,000	2,980	3,170	3,330
Pistachios CA	88,000	93,000	98,000	1,350	3,730	2,890
				<i>Pounds (Shelled Basis)</i>	<i>Pounds (Shelled Basis)</i>	<i>Pounds (Shelled Basis)</i>
Almonds CA	550,000	570,000	580,000	1,890	1,760	1,550

<sup>1</sup> Yield is based on utilized production.

**Nut Crops: Production and Price by Crop,  
State, and United States, 2003-2005**

Crop and State	Production			Price per Unit		
	2003	2004	2005	2003	2004	2005
	<i>Tons (In-Shell Basis)</i>	<i>Tons (In-Shell Basis)</i>	<i>Tons (In-Shell Basis)</i>	<i>Dollars per Ton</i>	<i>Dollars per Ton</i>	<i>Dollars per Ton</i>
Hazelnuts OR	37,900	37,500	28,000	1,030.00	1,440.00	2,040.00
Walnuts <sup>1</sup> (English) CA	326,000	325,000	355,000	1,160.00	1,390.00	
	1,000 Pounds					
	<i>(In-Shell Basis)</i>	<i>(In-Shell Basis)</i>	<i>(In-Shell Basis)</i>	<i>Dollars per Pound</i>	<i>Dollars per Pound</i>	<i>Dollars per Pound</i>
Macadamia Nuts HI	53,000	56,500	60,000	0.610	0.730	0.780
Pistachios CA	119,000	347,000	283,000	1.220	1.340	2.030
	1,000 Pounds					
	<i>(Shelled Basis)</i>	<i>(Shelled Basis)</i>	<i>(Shelled Basis)</i>	<i>Dollars per Pound</i>	<i>Dollars per Pound</i>	<i>Dollars per Pound</i>
Almonds <sup>2</sup> CA	1,040,000	1,005,000	900,000	1.570	2.210	3.080

<sup>1</sup> Price estimates for 2005 will be published on July 6, 2006.

<sup>2</sup> Price and value are based on the edible portion of the crop only. Production includes inedible quantities of no value as follows: 2003 - 20.8 million pounds, 2004 - 14.5 million pounds, and 2005 - 15.3 million pounds.

**Nut Crops: Use by Crop, State, and United States, 2003-2005**

Crop and State	Production					
	Sold In-Shell			Sold Shelled <sup>1</sup>		
	2003	2004	2005	2003	2004	2005
	<i>Tons</i>	<i>Tons</i>	<i>Tons</i>	<i>Tons</i>	<i>Tons</i>	<i>Tons</i>
Hazelnuts <sup>2</sup> OR	22,100	22,000		15,800	15,500	
Walnuts <sup>2</sup> (English) CA	81,000	75,000		245,000	250,000	
	<i>1,000 Pounds</i>	<i>1,000 Pounds</i>	<i>1,000 Pounds</i>	<i>1,000 Pounds</i>	<i>1,000 Pounds</i>	<i>1,000 Pounds</i>
Pecans <sup>2</sup> US	36,100	26,000		246,000	159,800	
	<i>Marketable In-Shell</i>	<i>Marketable In-Shell</i>	<i>Marketable In-Shell</i>	<i>Shelling Stock <sup>1</sup></i>	<i>Shelling Stock <sup>1</sup></i>	<i>Shelling Stock <sup>1</sup></i>
Pistachios CA	90,000	254,000	215,000	29,000	93,000	68,000

<sup>1</sup> In-shell basis.

<sup>2</sup> Estimates for 2005 will be published on July 6, 2006.

**Nut Crops: Value and Meat Production by Crop,  
State, and United States, 2003-2005**

Crop and State	Value of Utilized Production		
	2003	2004	2005
	<i>1,000 Dollars</i>	<i>1,000 Dollars</i>	<i>1,000 Dollars</i>
Hazelnuts OR	39,037	54,000	57,120
Walnuts <sup>1</sup> (English) CA	378,160	451,750	
Macadamia Nuts HI	32,330	41,245	46,800
Pistachios CA	145,180	464,980	574,490
Almonds <sup>2</sup> CA	1,600,144	2,189,005	2,724,876
	Meat Production of Nuts Sold Shelled		
	2003	2004	2005
	<i>Tons</i>	<i>Tons</i>	<i>Tons</i>
Hazelnuts <sup>1</sup> OR	6,300	5,900	
Walnuts <sup>1</sup> (English) CA	105,000	108,600	
	<i>1,000 Pounds</i>	<i>1,000 Pounds</i>	<i>1,000 Pounds</i>
Pecans <sup>1</sup> US	102,000	71,000	
Pistachios CA	13,700	45,700	33,500

<sup>1</sup> Estimates for 2005 will be published on July 6, 2006.

<sup>2</sup> Price and value are based on the edible portion of the crop only. Production includes inedible quantities of no value as follows:  
2003 - 20.8 million pounds, 2004 - 14.5 million pounds and 2005 - 15.3 million pounds.

**Pecans: Utilized Production and Price by Variety,  
State, and United States, 2003-2005**

Variety and State	Utilized Production			Price per Pound		
	2003	2004	2005	2003	2004	2005
	<i>1,000 Pounds</i>	<i>1,000 Pounds</i>	<i>1,000 Pounds</i>	<i>Dollars</i>	<i>Dollars</i>	<i>Dollars</i>
<b>Improved Varieties <sup>1</sup></b>						
AL	7,000	1,000	3,200	0.940	1.210	1.040
AZ	22,500	14,000	21,000	1.040	1.850	1.600
AR	1,400	1,000	1,500	1.100	1.400	1.400
CA	3,700	3,500	3,700	1.420	2.210	1.620
FL	500	400	700	1.000	1.500	1.500
GA	60,000	42,000	60,000	1.000	1.770	1.300
LA	4,000	2,500	1,000	1.080	1.400	1.700
MS <sup>2</sup>	4,800	700	700	0.860	1.300	1.500
MO <sup>2</sup>			200			1.550
NM	55,000	39,000	62,000	1.280	2.280	1.800
NC	2,200	70	1,400	0.850	2.000	0.900
OK	1,500	6,000	2,000	1.120	1.600	1.950
SC	3,300	800	2,000	0.850	1.800	1.300
TX	37,000	28,000	50,000	1.110	1.840	1.980
US	202,900	138,970	209,400	1.100	1.920	1.650
<b>Native and Seedling</b>						
AL	1,000	100	800	0.690	0.840	0.790
AR	2,400	700	1,200	0.720	1.200	1.100
FL	1,600	100	300	0.600	0.950	1.400
GA	15,000	3,000	10,000	0.640	1.240	0.800
KS	2,000	1,800	3,200	0.870	1.750	1.300
LA	16,000	6,500	3,000	0.680	0.950	0.900
MS <sup>2</sup>	2,200	300	100	0.500	0.800	1.000
MO <sup>2</sup>			1,800			1.190
NC	300	30	300	0.500	1.500	0.750
OK	4,500	22,000	14,000	0.800	1.350	1.650
SC	1,200	300	500	0.720	1.400	0.900
TX	33,000	12,000	15,000	0.690	1.270	0.780
US	79,200	46,830	50,200	0.683	1.280	1.090
<b>All Pecans</b>						
AL	8,000	1,100	4,000	0.909	1.180	0.990
AZ	22,500	14,000	21,000	1.040	1.850	1.600
AR	3,800	1,700	2,700	0.860	1.320	1.270
CA	3,700	3,500	3,700	1.420	2.210	1.620
FL	2,100	500	1,000	0.695	1.390	1.470
GA	75,000	45,000	70,000	0.928	1.730	1.230
KS	2,000	1,800	3,200	0.870	1.750	1.300
LA	20,000	9,000	4,000	0.760	1.080	1.100
MS <sup>2</sup>	7,000	1,000	800	0.747	1.150	1.440
MO <sup>2</sup>			2,000			1.230
NM	55,000	39,000	62,000	1.280	2.280	1.800
NC	2,500	100	1,700	0.808	1.850	0.874
OK	6,000	28,000	16,000	0.880	1.400	1.690
SC	4,500	1,100	2,500	0.815	1.690	1.220
TX	70,000	40,000	65,000	0.912	1.670	1.700
US	282,100	185,800	259,600	0.984	1.760	1.540

<sup>1</sup> Budded, grafted, or topworked varieties.

<sup>2</sup> Estimates began in 2005.

**Pecans: Value of Production by Variety,  
State, and United States, 2003-2005**

Variety and State	Value of Production		
	2003 <i>1,000 Dollars</i>	2004 <i>1,000 Dollars</i>	2005 <i>1,000 Dollars</i>
<b>Improved Varieties <sup>1</sup></b>			
AL	6,580	1,210	3,328
AZ	23,400	25,900	33,600
AR	1,540	1,400	2,100
CA	5,254	7,735	5,994
FL	500	600	1,050
GA	60,000	74,340	78,000
LA	4,320	3,500	1,700
MS	4,128	910	1,050
MO <sup>2</sup>			310
NM	70,400	88,920	111,600
NC	1,870	140	1,260
OK	1,680	9,600	3,900
SC	2,805	1,440	2,600
TX	41,070	51,520	99,000
US	223,547	267,215	345,492
<b>Native and Seedling</b>			
AL	690	84	632
AR	1,728	840	1,320
FL	960	95	420
GA	9,600	3,720	8,000
KS	1,740	3,150	4,160
LA	10,880	6,175	2,700
MS	1,100	240	100
MO <sup>2</sup>			2,142
NC	150	45	225
OK	3,600	29,700	23,100
SC	864	420	450
TX	22,770	15,240	11,700
US	54,082	59,709	54,949
<b>All Pecans</b>			
AL	7,270	1,294	3,960
AZ	23,400	25,900	33,600
AR	3,268	2,240	3,420
CA	5,254	7,735	5,994
FL	1,460	695	1,470
GA	69,600	78,060	86,000
KS	1,740	3,150	4,160
LA	15,200	9,675	4,400
MS	5,228	1,150	1,150
MO <sup>2</sup>			2,452
NM	70,400	88,920	111,600
NC	2,020	185	1,485
OK	5,280	39,300	27,000
SC	3,669	1,860	3,050
TX	63,840	66,760	110,700
US	277,629	326,924	400,441

<sup>1</sup> Budded, grafted, or topworked varieties.

<sup>2</sup> Estimates began in 2005.

## Definition of Terms

**Apples, Commercial Crop** refers to orchards of 100 or more bearing age trees.

**Bearing Acreage** - An orchard, grove, or vineyard is considered bearing when it reaches an age when it can normally be expected to produce a commercially significant quantity of the crop. Bearing age is a function of many factors including variety, rootstock, year planted, etc. Bearing acreage is primarily based upon periodic orchard surveys. In non-survey years, bearing acreage is based on trends, county extension service data, end-of-year production surveys, and other indications.

**Prices** are a marketing year average for all methods of sale. For a crop sold for both fresh market and processing, the **Marketing Year Average Price (MYA)** is a weighted average of the fresh and processing price.

Prices for fresh fruit are the average prices producers receive at the point of first sale. This is commonly referred to as the **average price as sold**. Since the point of first sale is not the same for all producers, prices for the various methods of sale are weighted by the proportionate quantity sold. For example, if in a given State part of the fruit is sold F.O.B. packed by growers, part is sold as bulk fruit at the packinghouse door, and some is sold retail at roadside stands, the fresh fruit **average price as sold** is a weighted average of the average price for each method of sale. The exception is fresh fruit sales in California, Washington, and New York (apples only) which are equivalent returns at packinghouse door. The equivalent packinghouse returns represent adjusted prices.

F.O.B. packed prices are adjusted to an equivalent incoming packinghouse door price by subtracting all costs that accumulate between the incoming packinghouse door and the F.O.B. price. These costs include grading, packing, inspecting fees, selling, and other costs.

Prices for fruit sold for processing are equivalent returns for fruit delivered to the processing plant door except for cranberries, California olives, and clingstone peaches which are priced at the first delivery point.

Crop value estimates in this report cover the marketing season or crop year and should not be confused with cash receipts from these crops which are on a calendar year.

**Total Production** is the quantity actually harvested plus quantities which would have been acceptable for fresh market or processing but were not harvested because of economic or natural reasons.

**Unutilized Production** is the difference between total and utilized production which is marketable fruit not harvested for economic or natural reasons and harvested fruit not sold or utilized.

**Harvested not sold** is fruit of marketable quality that was picked but not sold for various reasons. Harvested not sold amounts up to 2 percent of total production are considered normal seasonal losses and are excluded from total production.

**Unharvested Production** is marketable fruit produced, but not harvested for various reasons. Unharvested amounts up to 2 percent of total production are considered normal seasonal losses and are excluded from total production.

**Utilization** refers to first utilization, not necessarily final utilization. For example, frozen fruit includes some fruit that may be later used for making preserves. Grade-outs for fresh market fruit which are processed are included in the processing quantity. Fruit graded-out from canning or freezing and utilized for juice is included with juice.

**Utilized Production** is the amount sold plus the quantities used at home or held in storage.

**Yield per Acre** is based on total production which includes unharvested production and fruit harvested but not sold due to marketing conditions.



## State Value of Utilized Production and MYA Price Computations

The following procedure is used to compute State Values of Utilized Production and MYA Prices:

**Fresh Market Value** =            Fresh Market MYA  
   Times  
   Fresh Market Utilization

**Process Market Value** =            Process Market MYA  
   Times  
   Process Market Utilization

**"All" Sales Value** =                Fresh Market Value  
   Plus  
   Process Market Value

**"All" Sales MYA** =                 "All" Sales Value  
   Divided By  
   "All" Sales Utilization

For commodities with components not identified by market channel, substitute breakdown name for fresh/processing market and use the same procedure.

## U.S. MYA Price Computations

The following procedure is used to compute the U.S. MYA Prices:

**Fresh Market MYA** =                Fresh Market Value For All States  
   Divided By  
   Fresh Market Utilization For All States

**Process Market MYA** =                Process Market Value For All States  
   Divided By  
   Process Market Utilization For All States

**"All" Sales MYA** =                 Sales Value For All States  
   Divided By  
   Sales Utilization For All States

## Marketing Seasons for Noncitrus Fruits <sup>1</sup>

**Apples:**

All South Atlantic States, plus AR, CA, IL, IN, KY, MO, NM, TN . . . . . June - May  
 OR, WA . . . . . August - July  
 All other States . . . . . July - June

**Apricots:**

Fresh Fruit . . . . . May 25 - August 20  
 Canning . . . . . June 15 - August 15  
 Dried (CA) . . . . . June 20 - August 20

**Avocados:**

CA . . . . . November 1 through November 30 the following year  
 FL . . . . . June 20 - February 28  
 HI . . . . . January 1 - December 31 (peak harvest March 1 - April 30)

**Bananas:** . . . . . January 1 - December 31

**Cherries, Sweet:** . . . . . May 1 - August 15

**Cherries, Tart:** . . . . . June 15 - August 20

**Cranberries:** . . . . . September 5 - December 20

**Dates:** . . . . . August 15 - March 15

**Figs:**

Fresh Fruit . . . . . June 5 - October 31  
 Canning . . . . . August 1 - October 15  
 Dried (CA) . . . . . June 20 - October 31

**Grapes:**

Fresh (CA) . . . . . May 25 - April 30  
 Fresh (AZ) . . . . . June 5 - July 15  
 Fresh (All other States) . . . . . July 10 - October 31  
 Crushed for Juice, Wine, or Brandy . . . . . August 1 - December 15  
 Dried for Raisins (CA) . . . . . September 1 - May 31

**Guavas:** . . . . . January 1 - December 31 (peak harvest September 1 - October 31)

**Kiwifruit:** . . . . . November 1 - April 30

**Nectarines:** . . . . . June 10 - August 31

<sup>1</sup>See footnote on next page.

**Marketing Seasons for Noncitrus Fruits <sup>1</sup> (continued)**

<b>Olives:</b> .....	September 25 - March 15
<b>Papayas:</b> .....	January 1 - December 31
<b>Peaches:</b>	
Fresh (GA and SC) .....	May 20 - August 31
Fresh (Other South Atlantic States, South Central States, CA) .....	June 1 - September 30
Fresh (New England States, ID, MI, NY) .....	August 1 - September 30
Fresh (All other States) .....	July 1 - September 30
Canning (CA) .....	July 1 - September 10
Dried (CA) .....	August 1 - October 10
<b>Pears:</b>	
Fresh (CA) .....	July 1 - April 30
Fresh (WA and OR) .....	August 10 - July 31
Fresh (Other States) .....	July 1 - December 15
Canning and Dried (CA, OR, WA) .....	August 1 - November 30
<b>Pineapples:</b> .....	January 1 - December 31 (peak harvest March 1 - July 31)
<b>Plums:</b>	
Fresh (CA) .....	May 25 - September 30
Canning (CA) .....	June 1 - September 30
<b>Prunes, Dried (CA):</b> .....	August 1 - April 30
<b>Prune and Plums:</b>	
Fresh and Canning (ID, MI, OR, WA) .....	August 10 - October 20

**Marketing Seasons for Tree Nuts <sup>1</sup>**

<b>Almonds:</b> .....	August 5 - November 15
<b>Hazelnuts (Filberts):</b> .....	October 1 - September 30
<b>Macadamia Nuts:</b> .....	January 1 - December 31 (peak harvest August 1 - December 31)
<b>Pecans:</b> .....	September 30 - March 15
<b>Pistachios:</b> .....	September 1 - October 31
<b>Walnuts:</b> .....	September 15 - December 31

<sup>1</sup>For detail by States, see Agricultural Handbook No. 186, "Fruits and Tree Nuts, Blooming, Harvesting, and Marketing Dates," Dec 1975.

## Reliability of January Noncitrus Fruit Production Estimates

**Reliability:** To assist users in evaluating the reliability of the January noncitrus fruit production estimates, the "Root Mean Square Error," a statistical measure based on past performance, is computed. The deviation between the first January production estimate and the final estimate is expressed as a percentage of the final estimate. The average of squared percentage deviations for the latest 20-year period is computed. The square root of the average becomes statistically the "Root Mean Square Error." Probability statements can be made concerning expected differences in the current estimate relative to the final end-of-season estimate, assuming that factors affecting this year's estimate are not different from those influencing recent years. For example, the "Root Mean Square Error" for the January apple production estimate is 3.0 percent. This means that chances are 2 out of 3 that the current production estimate will not be above or below the final estimate by more than 3.0 percent. Chances are 9 out of 10 (90 percent confidence level) that the difference will not exceed 5.2 percent.

Also, shown in the following table is a 20-year record for selected crops of the differences between the first January production estimate and the final estimate. Using apples again as an example, changes between the first January estimate and the final estimate during the last 20 years have averaged 114.6 thousand tons, ranging from 6.1 thousand tons to 398.9 thousand tons. The first January estimate has been below the final estimate 9 times and above 11 times. This does not imply that the January estimate this year is likely to understate or overstate the final production.

**Reliability of Selected Noncitrus Fruit Estimates**

Crop	Unit	Root Mean Square Error		20-Year Record of Differences Between Initial Estimate and Final Estimate				
		Percent	90 Percent Confidence Interval	Quantity			Years	
				Average	Smallest	Largest	Below Final	Above Final
				<i>1,000</i>	<i>1,000</i>	<i>1,000</i>	<i>Number</i>	<i>Number</i>
Apples	Tons	3.0	5.2	114.6	6.1	398.9	9	11
Grapes	Tons	3.5	6.0	171.1	8.6	454.6	17	3
Peaches	Tons	1.4	2.4	14.0	0.1	29.8	8	12
Pears	Tons	2.9	5.0	19.8	1.5	63.9	14	6

## Information Contacts

Listed below are the commodity specialists in the Crops Branch of the National Agricultural Statistics Service to contact for additional information.

Joe Prusacki, Chief	(202) 720-2127
Field Crops Section	
Greg Thessen, Head	(202) 720-2127
Shiela Corley - Cotton, Cotton Ginnings	(202) 720-5944
Scott Cox - Wheat, Rye	(202) 720-8068
Ty Kalaus - Corn, Proso Millet, Flaxseed	(202) 720-9526
Dennis Koong - Peanuts, Rice	(202) 720-7688
Jason Lamprecht - Soybeans, Sunflower, Other Oilseeds	(202) 720-7369
Travis Thorson - Hay, Oats, Sorghum	(202) 690-3234
Brian Young - Crop Weather, Barley, Sugar Crops	(202) 720-7621
Fruit, Vegetable & Special Crops Section	
Jim Smith, Head	(202) 720-2127
Leslie Colburn - Berries, Grapes, Maple Syrup, Tobacco	(202) 720-7235
Debbie Flippin - Austrian Winter Peas, Dry Edible Peas, Lentils, Mint, Mushrooms, Peaches, Pears, Wrinkled Seed Peas	(202) 720-3250
Rich Holcomb - Citrus, Tropical Fruits	(202) 720-5412
Doug Marousek - Floriculture, Nursery, Nuts	(202) 720-4215
Terry O'Connor - Apples, Apricots, Cherries, Cranberries, Plums, Prunes	(202) 720-4288
Kim Ritchie - Hops	(360) 902-1940
Cathy Scherrer - Dry Beans, Potatoes, Sweet Potatoes	(202) 720-4285
Jim Smith - Fresh and Processing Vegetables, Onions, Strawberries	(202) 720-2127

## ACCESS TO REPORTS!!

---

For your convenience, there are several ways to obtain NASS reports, data products, and services:

### INTERNET ACCESS

All NASS reports are available free of charge on the worldwide Internet. For access, connect to the Internet and go to the NASS Home Page at [www.nass.usda.gov](http://www.nass.usda.gov).

### E-MAIL SUBSCRIPTION

All NASS reports are available by subscription free of charge direct to your e-mail address. Starting with the NASS Home Page at [www.nass.usda.gov](http://www.nass.usda.gov), under the right navigation, *Receive reports by Email*, click on **National** or **State**. Follow the instructions on the screen.

-----

### PRINTED REPORTS OR DATA PRODUCTS

**CALL OUR TOLL-FREE ORDER DESK: 800-999-6779 (U.S. and Canada)**  
**Other areas, please call 703-605-6220      FAX: 703-605-6900**  
**(Visa, MasterCard, check, or money order acceptable for payment.)**

-----

### ASSISTANCE

For **assistance** with general agricultural statistics or further information about NASS or its products or services, contact the **Agricultural Statistics Hotline** at **800-727-9540**, 7:30 a.m. to 4:00 p.m. ET, or e-mail: [nass@nass.usda.gov](mailto:nass@nass.usda.gov).

The U.S. Department of Agriculture (USDA) prohibits discrimination in all its programs and activities on the basis of race, color, national origin, age, disability, and where applicable, sex, marital status, familial status, parental status, religion, sexual orientation, genetic information, political beliefs, reprisal, or because all or part of an individual's income is derived from any public assistance program. (Not all prohibited bases apply to all programs.) Persons with disabilities who require alternative means for communication of program information (Braille, large print, audiotape, etc.) should contact USDA's TARGET Center at (202) 720-2600 (voice and TDD).

To file a complaint of discrimination, write to USDA, Director, Office of Civil Rights, 1400 Independence Avenue, S.W., Washington, D.C. 20250-9410, or call (800) 795-3272 (voice) or (202) 720-6382 (TDD). USDA is an equal opportunity provider and employer.

# Prospering in Rural America



**February 16-17, 2006**  
**Crystal Gateway**  
**Marriott Hotel**  
**Arlington, Virginia**

The theme is "Prospering in Rural America," and the program will highlight the economic development of rural America. In addition, there will be a broad range of sessions, including Shifting Trade Patterns, Chinese Agriculture, Homeland Security, the African Growth & Opportunity Act, Bio-fuel Production and New Energy Forms in Rural Areas, Community Supported Agriculture, and Feedback from the 2007 Farm Bill Listening Sessions.

Agriculture Secretary Mike Johanns and other top experts in agriculture will be among the more than 130 speakers.

Find full program and registration details at [www.usda.gov/oce/forum](http://www.usda.gov/oce/forum) or call toll free, 1-877-572-6043. Forum speeches can be downloaded after February 17, 2006.

[www.usda.gov/oce/forum](http://www.usda.gov/oce/forum)

**(877) 572-6043 toll free**