



United States
Department of
Agriculture

National
Agricultural
Statistics
Service



Noncitrus Fruits and Nuts 2007 Summary

July 2008

Fr Nt 1-3 (08) a

USDA



Contents

	Page
Noncitrus Fruits and Tree Nuts	
Bearing Acreage, U.S.	7
Bearing Acreage and Yield per Acre by Crop	4
Narrative	3
Price and Value by Crop	6
Production Utilization, U.S.....	7
Total and Utilized Production by Crop.....	5
 Noncitrus Fruits	
Apples, Commercial Crop	10, 64, 68
Apricots.....	20, 26, 27, 66
Avocados	20
Bananas.....	62
Berries (excluding strawberries)	30, 67
California Dry Fruits.....	27
Cherries, Sweet	36, 40, 66
Cherries, Tart	38, 40, 65
Cranberries.....	42, 65
Dates	20
Figs	22, 26, 27
Grapes	27, 44, 66, 69
Guavas	62
Hawaii Crops	62
Kiwifruit	22, 66
Nectarines	22
Olives	22, 26
Papayas	62
Peaches	27, 50, 65, 69
Pears.....	27, 58, 66, 69
Pineapples	62
Plums	22, 66
Prunes (dried basis).....	24, 27, 66
Prunes and Plums.....	24, 26, 66
Strawberries	28
Unutilized Production	64
 Tree Nuts	
Almonds.....	70
Hazelnuts	70
Macadamia Nuts	70
Pecans	71, 72
Pistachios	70
Walnuts.....	70
Definition of Terms	74
Information Contacts.....	79
Marketing Seasons	76
Reliability of Production Data in this Report	78
State Value of Utilized Production Computation	75
U.S. MYA Price Computation.....	75

This page intentionally left blank.

Update Alert

Monthly average grape prices received for 2007 were updated on page 69.

2007 Noncitrus Fruit Utilized Production Up 1 Percent, Value Up 8 Percent

In 2007, the Nation's revised utilized production of the leading noncitrus fruit crops totaled 17.1 million tons, up 1 percent from the 2006 utilized production. Utilized production increased from 2006 for olives (CA), apricots, blackberries (OR), avocados, nectarines, boysenberries, papayas (HI), peaches, figs (CA), grapes, sweet cherries, pears, strawberries, wild and cultivated blueberries, and tart cherries.

The revised value of utilized production for noncitrus fruit crops totaled 11.4 billion dollars, up 8 percent from 2006. The value of utilized production for olives (CA) increased 378 percent, apricots increased 43 percent, wild blueberries (ME) increased 38 percent, red raspberries are up 28 percent, tart cherries increased 27 percent, avocados are up 22 percent, and sweet cherries increased 20 percent. However, the utilized value of production for black raspberries (OR) decreased 63 percent, prunes (CA) are down 55 percent, prunes and plums (ID, MI, OR, and WA) and guavas (HI) decreased 43 percent, boysenberries are down 35 percent, blackberries (OR) are down 21 percent, and nectarines decreased 20 percent.

Highlights

Utilized apple production for 2007 is revised to 9.07 billion pounds, down 7 percent from 2006. Utilized apple production in Washington decreased 6 percent to 5.20 billion pounds from 2006. Michigan's utilized production decreased 10 percent from 2006, while utilized production in New York increased 4 percent from 2006. In Washington, growers harvested apples from lower yielding, younger trees. Low summer precipitation levels in Michigan reduced fruit sizes but fruit quality remained high. In New York, hailstorms damaged some of the crop, however, apple numbers and quality were high. A severe frost decimated orchards in the Southeast and Iowa, Missouri, Illinois, and Kentucky. Reports of tree damage and total crop loss were common in these States.

Utilized grape production for 2007 is revised to 7.02 million tons, up 10 percent from the 2006 crop. The California crop, which accounts for 89 percent of the 2007 U.S. utilized grape production, is up 8 percent from the previous year. Also for California, wine type production increased 3 percent, while table type and raisin type production rose 10 percent and 16 percent from 2006, respectively. Utilized production increased from 2006 in all grape States except Arkansas, Georgia, Missouri, North Carolina, and Virginia. In the south, a freeze Easter weekend damaged grape vines, reducing the crop in many southern States.

Utilized peach production in 2007 is revised to 1.12 million tons, up 13 percent from the previous year but 2 percent below 2005. The California crop, accounting for 85 percent of the U.S. utilized peach production, is up 33 percent from 2006. For California, the Clingstone utilized production is up 40 percent and the Freestone utilized production is up 26 percent from 2006. Cold temperatures in early April damaged peach orchards in the Atlantic States from New York to Georgia, with the southeastern States being affected the most.

Utilized pear production for 2007 is revised to 871,850 tons, up 5 percent from the previous year. Washington, the top producing State, utilized 402,000 tons, up 11 percent from 2006. California, the second largest producer at 243,000 tons, is up 6 percent from the previous season. Utilized pear production in Oregon, the third largest producing State, is 206,000 tons, down 4 percent from 2006.

U.S. Tree Nut Production Up 25 Percent, Value Up 8 Percent

U.S. tree nut production for crop year 2007 is revised to 1.99 million tons (in-shell basis), 25 percent greater than a year earlier. The almond crop is 1.21 million tons, up 27 percent from 2006. Walnut production in 2007, at 325,000 tons, is down 6 percent from the previous year. The pistachio crop is 208,000 tons, 75 percent larger than 2006. Pecan production in 2007 totals 192,700 tons, an 86 percent increase from 2006. The hazelnut crop, at 35,500 tons, is 17 percent smaller than the previous year. Macadamia nut production is 18,000 tons, down 38 percent.

Value of U.S. utilized nut production in 2007 is revised to 3.97 billion dollars, up 8 percent from the 2006 value. The almond crop is valued at 2.13 billion dollars, 6 percent less than last year. Walnuts are valued at 754 million dollars, 34 more than 2006. Pistachio value for 2007, at 562 million dollars, is 25 percent more than last year. The value of the pecan crop increased 35 percent to 435 million dollars. Hazelnut value, at 72.4 million dollars, is 56 percent above last year. The macadamia nut crop is valued at 20.9 million dollars, down 46 percent.

**Noncitrus Fruits and Nuts: Bearing Acreage and Yield per Acre
by Crop, United States, 2005-2007**

Crop	Bearing Acreage			Yield per Acre		
	2005	2006	2007	2005	2006	2007
	<i>Acres</i>	<i>Acres</i>	<i>Acres</i>	<i>Tons</i>	<i>Tons</i>	<i>Tons</i>
Noncitrus Fruits						
Apples	376,660	369,990	363,440	12.90	13.40	12.60
Apricots	15,830	14,870	14,870	5.16	2.99	5.95
Avocados	67,700	71,780	73,250	4.61	2.04	2.72
Bananas (HI) ¹	980	1,000	1,000	10.70	10.00	9.85
Blackberries (OR) ^{1 2}	6,500	6,900	7,100	3.73	3.07	4.15
Blueberries						
Cultivated ¹	48,710	54,220	52,220	2.45	2.61	2.71
Wild (ME) ³						
Boysenberries ¹	910	920	1,120	2.80	3.23	3.25
Loganberries (OR) ¹	60	60	30	1.84	1.00	1.50
Raspberries ¹						
Black (OR)	1,300	1,500	1,400	1.63	1.34	1.31
Red	11,400	11,500	11,200	3.40	2.77	2.69
All (CA)	4,200	4,300	4,400	12.00	13.50	11.30
Cherries, Sweet	78,790	81,600	83,570	3.18	3.60	3.72
Cherries, Tart	36,350	35,800	34,700	3.72	3.66	3.65
Cranberries	39,000	39,000	38,800	8.01	8.85	8.45
Dates (CA)	5,700	6,000	5,900	3.02	2.95	2.76
Figs (CA)	12,800	11,500	10,200	4.08	4.05	5.06
Grapes	934,850	934,400	932,150	8.36	6.82	7.53
Guavas (HI) ¹	620	365	150	6.55	10.20	12.70
Kiwifruit (CA)	4,500	4,000	4,000	8.27	6.53	6.13
Nectarines	36,900	36,900	36,900	6.79	6.28	7.67
Olives (CA)	32,000	31,000	31,000	4.44	0.76	4.27
Papayas (HI) ¹	1,480	1,530	1,310	11.10	9.40	12.80
Peaches	139,430	134,860	134,140	8.50	7.49	8.41
Pears	60,480	59,780	59,530	13.60	14.10	14.70
Pineapples (HI) ⁴	14,000	12,600				
Plums (CA)	36,000	37,000	37,000	4.75	4.27	4.11
Prunes (CA)	67,000	65,000	65,000	4.42	9.75	3.70
Prunes & Plums ⁵	3,530	3,430	3,270	2.58	6.27	3.70
Strawberries ¹	52,200	53,280	53,730	22.20	22.60	23.30
Total	2,089,880	2,085,085	2,061,380			
Tree Nuts						
Almonds (CA) ⁶	580,000	585,000	615,000	1.34	1.64	1.97
Hazelnuts (OR)	28,300	28,200	28,100	0.98	1.52	1.26
Macadamias (HI)	18,000	15,000	15,000	1.50	1.94	1.20
Pecans ³						
Pistachios (CA)	105,000	112,000	114,000	1.35	1.07	1.83
Walnuts (CA)	215,000	216,000	218,000	1.65	1.60	1.49
Total	946,300	956,200	990,100			

¹ Harvested acreage. Yield based on utilized production.

² Cultivated.

³ Bearing acreage and yield not estimated.

⁴ Acreage is total acres in crop, not harvested acreage. Yield is not estimated. 2007 data not published to avoid disclosure of individual operations.

⁵ ID, MI, OR, and WA.

⁶ Yield based on in-shell basis. Shelling ratios are: 2005, 0.590; 2006, 0.585; 2007, 0.573.

**Noncitrus Fruits and Nuts: Total and Utilized Production
by Crop, United States, 2005-2007**

Crop	Total Production			Utilized Production		
	2005	2006	2007	2005	2006	2007
	<i>1,000 Tons Fresh Equivalent</i>	<i>1,000 Tons Fresh Equivalent</i>	<i>1,000 Tons Fresh Equivalent</i>	<i>1,000 Tons Fresh Equivalent</i>	<i>1,000 Tons Fresh Equivalent</i>	<i>1,000 Tons Fresh Equivalent</i>
Noncitrus Fruits						
Apples	4,852.5	4,935.9	4,557.0	4,801.3	4,887.8	4,535.0
Apricots	81.7	44.5	88.5	76.6	44.5	88.5
Avocados	312.4	146.4	198.9	312.4	146.4	198.9
Bananas (HI) ¹				10.5	10.0	9.9
Blackberries (OR) ²	24.5	21.3	32.0	24.2	21.2	29.5
Blueberries						
Cultivated	119.3	141.5	141.7	119.1	141.3	141.5
Wild (ME)	30.1	37.3	38.6	30.1	37.3	38.6
Boysenberries	2.6	3.0	3.9	2.6	3.0	3.6
Loganberries (OR) ³	0.1	0.1		0.1	0.1	
Raspberries						
Black (OR)	2.1	2.0	1.9	2.1	2.0	1.8
Red	38.8	31.9	30.1	38.8	31.9	30.1
All (CA)	50.4	58.1	49.5	50.4	58.1	49.5
Cherries, Sweet	250.8	294.2	310.7	243.6	287.5	306.2
Cherries, Tart	135.2	131.0	126.6	134.2	124.3	124.4
Cranberries	312.2	345.0	327.7	312.2	339.8	327.7
Dates (CA)	17.2	17.7	16.3	17.2	17.7	16.3
Figs (CA)	52.2	46.6	51.6	52.2	46.6	51.6
Grapes	7,813.7	6,377.2	7,018.0	7,810.5	6,365.9	7,017.0
Guavas (HI) ¹				4.1	3.7	1.9
Kiwifruit (CA)	37.2	26.1	24.5	36.2	25.4	23.7
Nectarines	250.5	231.9	283.0	250.5	231.9	283.0
Olives (CA)	142.0	23.5	132.5	142.0	23.5	132.5
Papayas (HI) ¹				16.5	14.4	16.7
Peaches	1,184.6	1,010.1	1,128.7	1,145.1	987.1	1,117.2
Pears	823.3	842.0	873.0	821.7	831.1	871.9
Pineapples (HI) ^{1 4}				212.0	185.0	
Plums (CA)	171.0	158.0	152.0	171.0	158.0	152.0
Prunes (CA)	295.9	633.6	240.8	286.7	604.8	234.9
Prunes & Plums ⁵	9.1	21.5	12.1	9.1	19.2	10.9
Strawberries ¹				1,161.1	1,202.0	1,249.7
Total				18,294.1	16,851.5	17,064.5
	<i>1,000 Tons In-Shell Equivalent</i>	<i>1,000 Tons In-Shell Equivalent</i>	<i>1,000 Tons In-Shell Equivalent</i>	<i>1,000 Tons In-Shell Equivalent</i>	<i>1,000 Tons In-Shell Equivalent</i>	<i>1,000 Tons In-Shell Equivalent</i>
Tree Nuts ¹						
Almonds (CA)				775.4	957.3	1,212.9
Hazelnuts (OR)				27.6	43.0	35.5
Macadamias (HI)				27.0	29.0	18.0
Pecans				140.1	103.7	192.7
Pistachios (CA)				141.5	119.0	208.0
Walnuts (CA)				355.0	346.0	325.0
Total				1,466.6	1,598.0	1,992.1

¹ Only utilized production estimated.

² Cultivated.

³ Production less than 0.1 thousand tons in 2007.

⁴ 2007 data not published to avoid disclosure of individual operations.

⁵ ID, MI, OR, and WA.

**Noncitrus Fruits and Nuts: Price and Value
by Crop, United States, 2005-2007**

Crop	Unit ¹	Price			Value of Utilized Production		
		2005	2006	2007	2005	2006	2007
		<i>Dollars</i>	<i>Dollars</i>	<i>Dollars</i>	<i>1,000 Dollars</i>	<i>1,000 Dollars</i>	<i>1,000 Dollars</i>
Noncitrus Fruits							
Apples	Lb	0.174	0.229	0.284	1,675,097	2,236,112	2,579,714
Apricots	Ton	520.00	665.00	477.00	39,880	29,563	42,227
Avocados	Ton	1,130.00	1,800.00	1,620.00	353,808	264,166	322,181
Bananas (HI)	Lb	0.439	0.490	0.410	9,175	9,800	8,077
Blackberries (OR) ²	Lb	0.762	0.854	0.486	36,867	36,193	28,597
Blueberries	Lb						
Cultivated	Lb	1.440	1.760	1.840	342,311	497,966	519,326
Wild (ME)	Lb	0.656	0.805	1.070	39,430	60,040	83,031
Boysenberries	Lb	1.400	1.200	0.637	7,158	7,128	4,634
Loganberries (OR)	Lb	0.855	0.833	0.978	188	100	88
Raspberries	Lb						
Black (OR)	Lb	2.460	2.440	0.982	10,418	9,780	3,583
Red	Lb	0.583	0.398	0.538	45,184	25,346	32,320
All (CA)	Lb	1.990	2.150	2.880	200,592	249,615	285,120
Cherries, Sweet	Ton	1,990.00	1,620.00	1,820.00	484,348	465,225	557,056
Cherries, Tart	Lb	0.238	0.215	0.273	63,936	53,454	67,923
Cranberries	Bbl	35.20	41.10	46.90	219,985	279,281	307,233
Dates (CA)	Ton	1,430.00	2,140.00	2,290.00	24,596	37,878	37,327
Figs (CA)	Ton	497.00	554.00	483.00	25,919	25,815	24,921
Grapes	Ton	447.00	519.00	491.00	3,494,095	3,303,668	3,447,034
Guavas (HI)	Lb	0.139	0.142	0.157	1,126	1,051	597
Kiwifruit (CA)	Ton	620.00	911.00	950.00	22,461	23,148	22,517
Nectarines	Ton	507.00	522.00	340.00	126,942	121,004	96,305
Olives (CA)	Ton	564.00	771.00	654.00	80,097	18,119	86,694
Papayas (HI)	Lb	0.342	0.385	0.392	11,241	11,049	13,094
Peaches	Ton	447.00	520.00	452.00	511,520	512,867	504,566
Pears	Ton	358.00	397.00	416.00	293,863	329,928	363,092
Pineapples (HI) ³	Ton	374.00	398.00		79,288	73,652	
Plums (CA)	Ton	541.00	688.00	665.00	92,463	108,648	101,077
Prunes (CA) ⁴	Ton	1,470.00	1,390.00	1,450.00	138,180	262,710	117,450
Prunes & Plums ⁵	Ton	562.00	452.00	454.00	5,085	8,678	4,956
Strawberries	Cwt	60.10	63.20	69.80	1,395,724	1,519,960	1,745,609
Total					9,830,977	10,581,944	11,406,349
Tree Nuts							
Almonds (CA)	Lb	2.810	2.060	1.550	2,525,909	2,258,790	2,127,375
(Shelled)	Lb						
Hazelnuts (OR)	Ton	2,240.00	1,080.00	2,040.00	61,824	46,440	72,420
Macadamias (HI)	Lb	0.810	0.670	0.580	43,740	38,860	20,880
Pecans	Lb	1.450	1.560	1.130	406,920	322,493	434,725
Pistachios (CA)	Lb	2.050	1.890	1.350	580,150	449,820	561,600
Walnuts (CA)	Ton	1,570.00	1,630.00	2,320.00	557,350	563,980	754,000
Total					4,175,893	3,680,383	3,971,000

¹ Ton refers to the 2,000 lb. short ton.

² Cultivated.

³ 2007 data not published to avoid disclosure of individual operations.

⁴ Price is for dried basis.

⁵ ID, MI, OR, and WA.

**Fruits and Nuts: Bearing Acreage,
United States, 2005-2007**

Year	Citrus Fruits ¹	Major Deciduous Fruits ²	Miscellaneous Noncitrus ³	Nuts ⁴	Total
	<i>Acres</i>	<i>Acres</i>	<i>Acres</i>	<i>Acres</i>	<i>Acres</i>
2005	945,700	1,785,820	304,060	946,300	3,981,880
2006	877,700	1,773,630	311,455	956,200	3,918,985
2007 ⁵	856,200	1,764,570	296,810	990,100	3,907,680

¹ Grapefruit, lemons, oranges, tangelos, tangerines, and Temples.

² Commercial apples, apricots, cherries, grapes, nectarines, peaches, pears, plums, and prunes.

³ Avocados, bananas, berries, cranberries, dates, figs, guavas, kiwifruit, olives, papayas, pineapples, and strawberries.

⁴ Almonds, hazelnuts, macadamia nuts, pistachios, and walnuts.

⁵ Pineapples not included.

**Noncitrus Fruits: Production Utilization,
United States, 2005-2007 ¹**

Year	Utilized Production	Fresh	Processed ²					Other
			Canned	Dried	Juice	Frozen	Wine	
	<i>1,000 Tons</i>	<i>1,000 Tons</i>	<i>1,000 Tons</i>	<i>1,000 Tons</i>	<i>1,000 Tons</i>	<i>1,000 Tons</i>	<i>1,000 Tons</i>	<i>1,000 Tons</i>
2005	18,294.1	7,201.8	1,575.0	2,101.4	1,562.2	712.9	4,551.2	277.4
2006	16,851.5	6,958.6	1,400.8	2,219.4	1,261.9	675.1	3,725.3	270.6
2007 ³	17,064.5	7,062.6	1,435.0	2,012.3	1,260.2	709.4	3,919.6	337.7

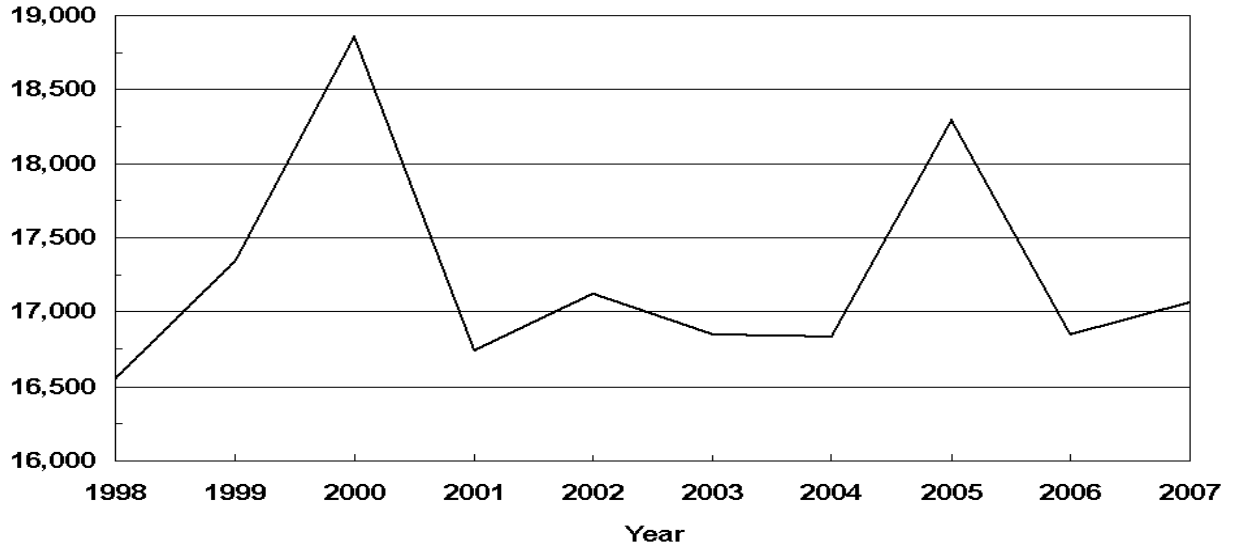
¹ Cranberry quantity included in utilized production, excluded from fresh and processed breakdown.

² Processed strawberries are included in frozen.

³ Pineapples not included.

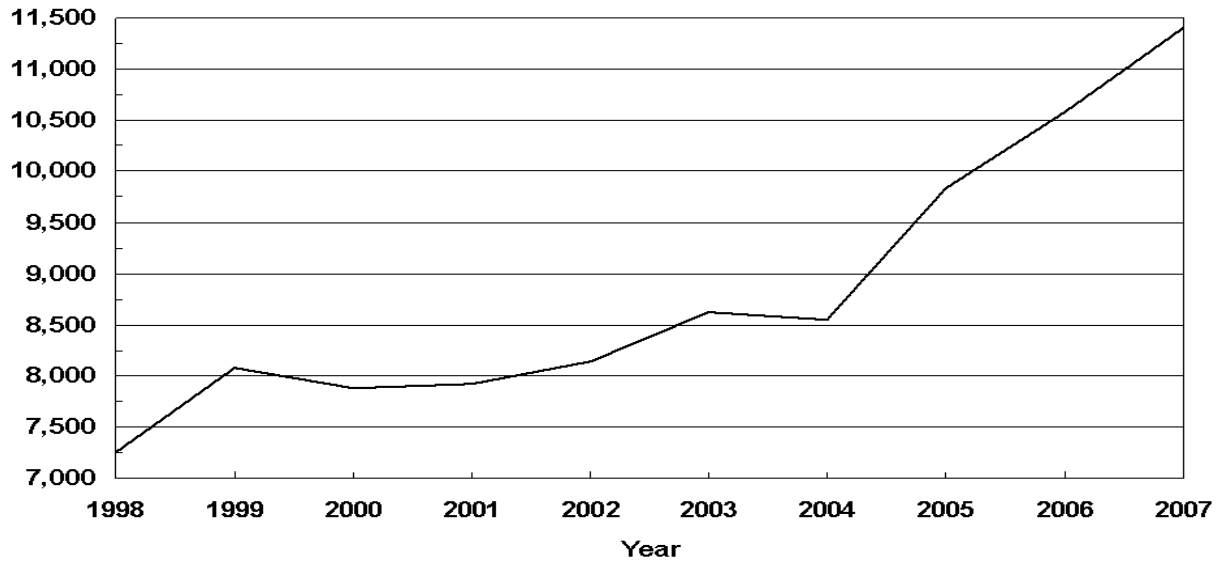
U.S. Noncitrus Fruits Utilized Production 1998-2007

(000) Tons Fresh
Equivalent



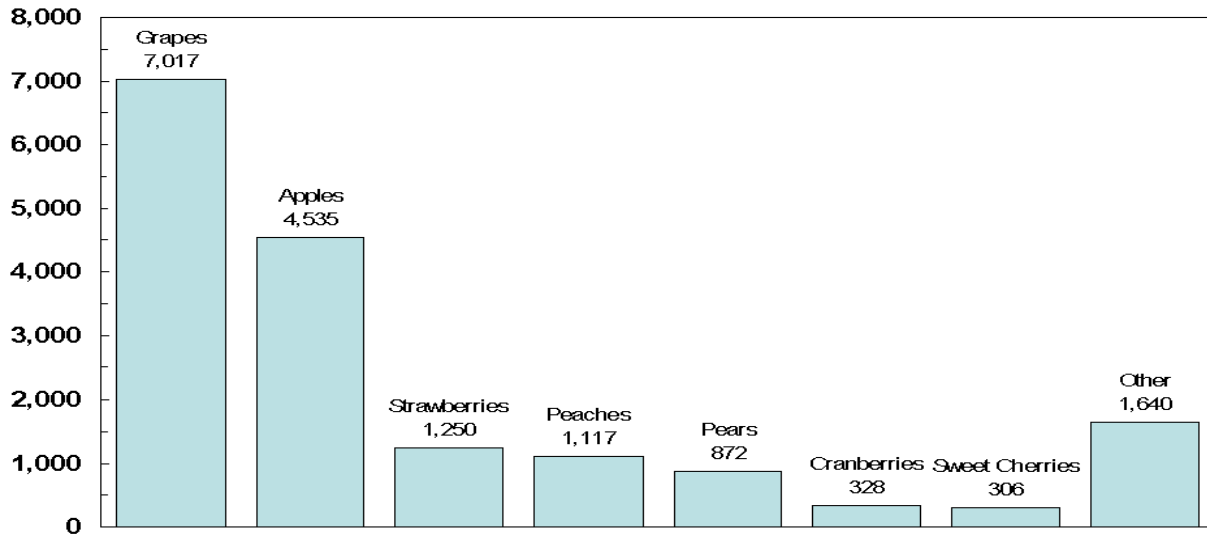
U.S. Noncitrus Fruits Value of Utilized Production 1998-2007

Million Dollars



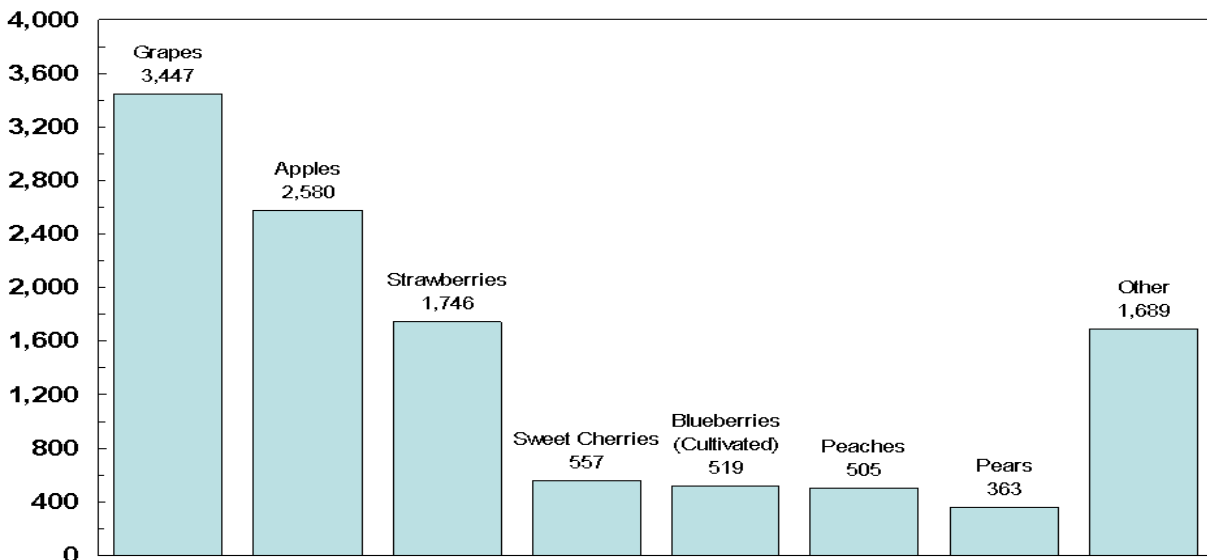
U.S. Noncitrus Fruits Utilized Production by Major Fruit, 2007

(000) Tons Fresh
Equivalent



U.S. Noncitrus Fruits Value of Utilized Production by Major Fruit, 2007

Million Dollars



**Apples, Commercial: Bearing Acreage and Yield
by State and United States, 2005-2007**

State	Bearing Acreage			Yield per Acre ¹		
	2005	2006	2007	2005	2006	2007
	<i>Acres</i>	<i>Acres</i>	<i>Acres</i>	<i>Pounds</i>	<i>Pounds</i>	<i>Pounds</i>
AZ	1,100	1,100	1,200	20,200	27,400	19,200
CA	24,000	21,000	20,500	14,800	16,900	16,800
CO	1,500	1,500	1,400	20,700	10,000	9,290
CT	2,200	2,200	2,200	7,050	7,950	10,500
GA	1,300	1,300	1,300	10,800	10,000	1,540
ID	3,100	2,800	2,800	22,600	21,400	12,500
IL	4,000	4,000	4,000	12,300	13,100	1,250
IN	4,000	4,000	4,000	12,500	13,800	8,250
IA	1,600	1,600	1,600	1,310	4,190	1,690
KY	860	790	740	6,400	8,730	811
ME	3,500	3,400	3,400	8,860	6,910	11,800
MD	2,400	2,400	2,400	17,100	14,200	13,800
MA	4,100	4,000	4,000	6,950	8,000	9,630
MI	40,000	38,000	35,000	19,000	23,200	22,000
MN	2,400	2,700	3,000	9,170	8,520	8,670
MO	4,100	4,100	4,100	12,000	12,900	732
NH	2,100	2,100	2,100	10,000	13,600	16,400
NJ	2,300	2,200	2,100	19,600	20,500	20,000
NY	45,000	45,000	42,000	23,200	28,000	31,200
NC	6,800	6,800	6,800	19,100	25,400	8,820
OH	7,300	7,300	7,000	13,600	14,000	7,940
OR	4,200	4,200	4,200	34,500	35,700	32,100
PA	21,800	21,000	21,500	22,900	22,400	21,900
RI	300	300	300	5,330	6,670	8,670
SC	700	600	500	5,710	5,000	600
TN	900	900	800	9,440	11,100	125
UT	1,600	1,300	1,300	23,800	7,690	14,600
VT	2,700	2,700	2,700	12,200	13,300	14,100
VA	13,000	12,000	12,000	19,200	18,300	17,900
WA	157,000	158,000	158,000	36,300	35,100	32,900
WV	5,000	5,000	5,000	17,400	18,000	16,000
WI	5,800	5,700	5,500	8,970	11,400	10,700
US	376,660	369,990	363,440	25,800	26,700	25,100

¹ Yield is based on total production, which includes unharvested production and fruit harvested but not sold due to market conditions.

**Apples, Commercial: Total and Utilized Production
by State and United States, 2005-2007**

State	Total Production			Utilized Production		
	2005	2006	2007	2005	2006	2007
	<i>Million Pounds</i>	<i>Million Pounds</i>	<i>Million Pounds</i>	<i>Million Pounds</i>	<i>Million Pounds</i>	<i>Million Pounds</i>
AZ	22.2	30.1	23.0	22.0	30.0	23.0
CA	355.0	355.0	345.0	355.0	355.0	345.0
CO	31.0	15.0	13.0	27.0	14.0	13.0
CT	15.5	17.5	23.0	15.0	16.5	22.0
GA	14.0	13.0	2.0	14.0	12.0	2.0
ID	70.0	60.0	35.0	70.0	55.0	35.0
IL	49.0	52.5	5.0	38.5	44.8	4.9
IN	50.0	55.0	33.0	40.0	48.5	30.0
IA	2.1	6.7	2.7	1.9	5.8	1.7
KY	5.5	6.9	0.6	4.7	6.3	0.4
ME	31.0	23.5	40.0	29.0	23.5	36.0
MD	41.0	34.0	33.0	40.8	34.0	33.0
MA	28.5	32.0	38.5	26.0	30.5	36.5
MI	760.0	880.0	770.0	755.0	855.0	770.0
MN	22.0	23.0	26.0	16.0	17.0	20.1
MO	49.0	53.0	3.0	47.0	51.0	2.9
NH	21.0	28.5	34.5	19.5	27.5	33.0
NJ	45.0	45.0	42.0	44.0	44.0	42.0
NY	1,045.0	1,260.0	1,310.0	1,035.0	1,250.0	1,300.0
NC	130.0	173.0	60.0	118.0	170.0	60.0
OH	99.0	102.0	55.6	98.0	101.0	55.6
OR	145.0	150.0	135.0	135.0	150.0	135.0
PA	500.0	470.0	470.0	495.0	467.0	467.0
RI	1.6	2.0	2.6	1.4	1.8	2.4
SC	4.0	3.0	0.3	2.5	2.4	0.3
TN	8.5	10.0	0.1	7.5	9.0	0.1
UT	38.0	10.0	19.0	35.7	9.9	18.0
VT	33.0	36.0	38.0	29.5	32.0	33.0
VA	250.0	220.0	215.0	247.0	214.0	215.0
WA	5,700.0	5,550.0	5,200.0	5,700.0	5,550.0	5,200.0
WV	87.0	90.0	80.0	83.0	88.0	77.0
WI	52.0	65.0	59.0	49.5	60.0	56.0
US	9,704.9	9,871.7	9,113.9	9,602.5	9,775.5	9,069.9

**Apples, Commercial: Price and Value by State
by State and United States, 2005-2007**

State	Price per Pound			Value of Utilized Production		
	2005	2006	2007	2005	2006	2007
	<i>Dollars</i>	<i>Dollars</i>	<i>Dollars</i>	<i>1,000 Dollars</i>	<i>1,000 Dollars</i>	<i>1,000 Dollars</i>
AZ	0.240	0.181	0.219	5,275	5,438	5,040
CA	0.210	0.240	0.263	74,718	85,068	90,769
CO	0.179	0.270	0.215	4,824	3,780	2,790
CT	0.462	0.534	0.489	6,930	8,807	10,766
GA	0.236	0.202	0.500	3,310	2,419	1,000
ID	0.179	0.193	0.252	12,503	10,625	8,820
IL	0.372	0.348	0.756	14,320	15,582	3,703
IN	0.294	0.299	0.323	11,770	14,498	9,679
IA	0.453	0.504	0.642	861	2,921	1,092
KY	0.346	0.377	0.518	1,628	2,376	207
ME	0.341	0.419	0.409	9,900	9,851	14,739
MD	0.144	0.201	0.182	5,884	6,820	6,009
MA	0.448	0.494	0.437	11,659	15,072	15,960
MI	0.126	0.147	0.168	95,038	125,275	129,000
MN	0.535	0.543	0.637	8,563	9,228	12,807
MO	0.165	0.215	0.208	7,744	10,973	604
NH	0.310	0.352	0.356	6,045	9,683	11,750
NJ	0.313	0.410	0.229	13,779	18,060	9,609
NY	0.162	0.201	0.220	167,900	250,905	285,855
NC	0.117	0.144	0.098	13,859	24,560	5,864
OH	0.286	0.346	0.435	28,069	34,977	24,159
OR	0.157	0.198	0.281	21,238	29,712	37,943
PA	0.100	0.128	0.142	49,550	59,813	66,489
RI	0.524	0.542	0.561	734	975	1,346
SC	0.172	0.156	0.473	430	375	142
TN	0.268	0.273	0.400	2,012	2,456	40
UT	0.159	0.368	0.329	5,671	3,643	5,916
VT	0.304	0.316	0.332	8,970	10,125	10,961
VA	0.096	0.098	0.127	23,727	20,964	27,375
WA	0.181	0.254	0.336	1,031,504	1,407,632	1,745,620
WV	0.084	0.092	0.096	7,010	8,058	7,406
WI	0.397	0.424	0.469	19,672	25,441	26,254
US	0.174	0.229	0.284	1,675,097	2,236,112	2,579,714

**Apples, Commercial: Fresh Market Utilization and Price
by State and United States, 2005-2007 ¹**

State	Fresh Market					
	Quantity			Price per Pound ²		
	2005	2006	2007	2005	2006	2007
	<i>Million Pounds</i>	<i>Million Pounds</i>	<i>Million Pounds</i>	<i>Dollars</i>	<i>Dollars</i>	<i>Dollars</i>
AZ	5.0	4.0	4.0	0.630	0.400	0.560
CA	160.0	155.0	155.0	0.378	0.412	0.431
CO	14.0	10.0	6.0	0.271	0.350	0.360
CT	13.0	14.5	19.5	0.520	0.585	0.535
ID	35.0	30.0	20.0	0.340	0.330	0.375
IN	26.5	31.5	20.0	0.415	0.429	0.450
KY	4.3			0.372		
ME	24.0	19.0	28.5	0.400	0.500	0.490
MD	17.8	20.0	15.0	0.241	0.285	0.307
MA	22.0	26.0	30.5	0.520	0.570	0.510
MI	265.0	295.0	265.0	0.210	0.245	0.290
MO	27.0	35.0	1.4	0.242	0.271	0.328
NH	12.5	17.5	21.0	0.450	0.520	0.520
NJ	33.0	33.0	26.0	0.393	0.524	0.327
NY	490.0	690.0	680.0	0.264	0.302	0.341
NC	35.0	68.0	4.8	0.229	0.251	0.340
OH	85.4	87.3	48.7	0.319	0.390	0.483
OR	95.0	105.0	90.0	0.209	0.267	0.387
PA	127.0	132.0	137.0	0.185	0.257	0.294
SC	1.2	0.9	0.2	0.264	0.293	0.650
UT	27.4	8.9	15.6	0.200	0.400	0.370
VT	24.0	27.5	21.0	0.360	0.360	0.470
VA	51.0	34.0	44.0	0.205	0.238	0.290
WA	4,400.0	4,350.0	4,350.0	0.228	0.314	0.382
WV	16.0	16.0	14.0	0.173	0.173	0.187
WI	42.0	50.0	47.0	0.450	0.490	0.540
Oth Sts	64.3	81.7	26.8	0.442	0.420	0.719
US	6,117.4	6,341.8	6,091.0	0.244	0.317	0.377

¹ Missing data included in Other States to avoid disclosure of individual operations.

² Equivalent packinghouse door returns for CA, MI, NY, and WA; price at first sale for all other States.

**Apples, Commercial: Value of Fresh Market Production
by State and United States, 2005-2007 ¹**

State	Fresh Market		
	Value of Production		
	2005	2006	2007
	<i>1,000 Dollars</i>	<i>1,000 Dollars</i>	<i>1,000 Dollars</i>
AZ	3,150	1,600	2,240
CA	60,480	63,860	66,805
CO	3,794	3,500	2,160
CT	6,760	8,483	10,433
ID	11,900	9,900	7,500
IN	10,998	13,514	9,000
KY	1,600		
ME	9,600	9,500	13,965
MD	4,290	5,700	4,605
MA	11,440	14,820	15,555
MI	55,650	72,275	76,850
MO	6,534	9,485	459
NH	5,625	9,100	10,920
NJ	12,969	17,292	8,502
NY	129,360	208,380	231,880
NC	8,015	17,068	1,632
OH	27,243	34,047	23,522
OR	19,855	28,035	34,830
PA	23,495	33,924	40,278
SC	317	264	130
UT	5,480	3,560	5,772
VT	8,640	9,900	9,870
VA	10,455	8,092	12,760
WA	1,003,200	1,365,900	1,661,700
WV	2,768	2,768	2,618
WI	18,900	24,500	25,380
Oth Sts	28,424	34,302	19,273
US	1,490,942	2,009,769	2,298,639

¹ Missing data included in Other States to avoid disclosure of individual operations.

**Apples, Commercial: Processed Utilization and Price
by State and United States, 2005-2007¹**

State	Processed					
	Quantity			Price per Ton		
	2005	2006	2007	2005	2006	2007
	<i>Million Pounds</i>	<i>Million Pounds</i>	<i>Million Pounds</i>	<i>Dollars</i>	<i>Dollars</i>	<i>Dollars</i>
AZ	17.0	26.0	19.0	250.00	295.00	295.00
CA	195.0	200.0	190.0	146.00	212.00	252.00
CO	13.0	4.0	7.0	158.00	140.00	180.00
CT	2.0	2.0	2.5	170.00	324.00	266.00
ID	35.0	25.0	15.0	34.50	58.00	176.00
IN	13.5	17.0	10.0	114.00	116.00	136.00
KY	0.4			140.00		
ME	5.0	4.5	7.5	120.00	156.00	206.00
MD	23.0	14.0	18.0	139.00	160.00	156.00
MA	4.0	4.5	6.0	110.00	112.00	135.00
MI	490.0	560.0	505.0	161.00	189.00	207.00
MO	20.0	16.0	1.5	121.00	186.00	193.00
NH	7.0	10.0	12.0	120.00	117.00	138.00
NJ	11.0	11.0	16.0	147.00	140.00	138.00
NY	545.0	560.0	620.0	141.00	152.00	174.00
NC	83.0	102.0	55.2	141.00	147.00	153.00
OH	12.6	13.7	6.9	131.00	136.00	185.00
OR	40.0	45.0	45.0	69.20	74.50	138.00
PA	368.0	335.0	330.0	142.00	155.00	159.00
SC	1.3	1.5	0.1	174.00	148.00	240.00
UT	8.3	1.0	2.4	46.00	166.00	120.00
VT	5.5	4.5	12.0	120.00	100.00	182.00
VA	196.0	180.0	171.0	135.00	143.00	171.00
WA	1,300.0	1,200.0	850.0	43.50	69.60	197.00
WV	67.0	72.0	63.0	127.00	147.00	152.00
WI	7.5	10.0	9.0	206.00	188.00	194.00
Oth Sts	15.0	15.0	4.8	183.00	221.00	384.00
US	3,485.1	3,433.7	2,978.9	106.00	132.00	189.00

¹ Missing data included in Other States to avoid disclosure of individual operations.

**Apples, Commercial: Value of Processed Production
by State and United States, 2005-2007¹**

State	Processed		
	Value of Production		
	2005	2006	2007
	<i>1,000 Dollars</i>	<i>1,000 Dollars</i>	<i>1,000 Dollars</i>
AZ	2,125	3,838	2,800
CA	14,238	21,208	23,964
CO	1,030	280	630
CT	170	324	333
ID	603	725	1,320
IN	772	984	679
KY	28		
ME	300	351	774
MD	1,594	1,120	1,404
MA	219	252	405
MI	39,388	53,000	52,150
MO	1,210	1,488	145
NH	420	583	830
NJ	810	768	1,107
NY	38,540	42,525	53,975
NC	5,844	7,492	4,232
OH	826	930	637
OR	1,383	1,677	3,113
PA	26,055	25,889	26,211
SC	113	111	12
UT	191	83	144
VT	330	225	1,091
VA	13,272	12,872	14,615
WA	28,304	41,732	83,920
WV	4,242	5,290	4,788
WI	772	941	874
Oth Sts	1,376	1,655	922
US	184,155	226,343	281,075

¹ Missing data included in Other States to avoid disclosure of individual operations.

**Apples, Commercial: Processed Utilization, Use, and Price
by State and United States, 2005-2007¹**

Use and State	Processed Utilization					
	Quantity			Price per Ton		
	2005	2006	2007	2005	2006	2007
	<i>Million Pounds</i>	<i>Million Pounds</i>	<i>Million Pounds</i>	<i>Dollars</i>	<i>Dollars</i>	<i>Dollars</i>
Canned						
MI	195.0	215.0	170.0	175.00	170.00	210.00
NY	290.0	300.0	320.0	156.00	172.00	173.00
NC	48.0	59.0	30.4	160.00	160.00	164.00
PA	267.0	258.0	230.0	160.00	168.00	166.00
VA	131.0	117.0	114.0	149.00	157.00	171.00
WA	140.0	150.0	120.0	76.50	92.10	207.00
WV	44.0	47.0	43.0	140.00	163.00	163.00
Oth Sts	49.0	22.3	27.8	154.00	150.00	203.00
US	1,164.0	1,168.3	1,055.2	149.00	158.00	181.00
Juice & Cider						
CA	180.0	175.0		149.00	222.00	
MI	140.0	175.0	140.0	110.00	120.00	145.00
NY	180.0	190.0	220.0	88.00	112.00	144.00
NC	20.0	30.0	19.7	106.00	118.00	137.00
OR	21.0	27.0	25.0	26.00	46.00	100.00
PA	92.0	67.0	90.0	85.00	102.00	140.00
VA	42.0	42.0	37.0	92.00	102.00	171.00
WA	870.0	700.0	450.0	28.00	54.50	192.00
WV	19.0	20.0	16.0	101.00	110.00	125.00
Oth Sts	145.4	135.1	266.3	119.00	162.00	224.00
US	1,709.4	1,561.1	1,264.0	67.90	102.00	177.00

See footnote(s) at end of table.

--continued

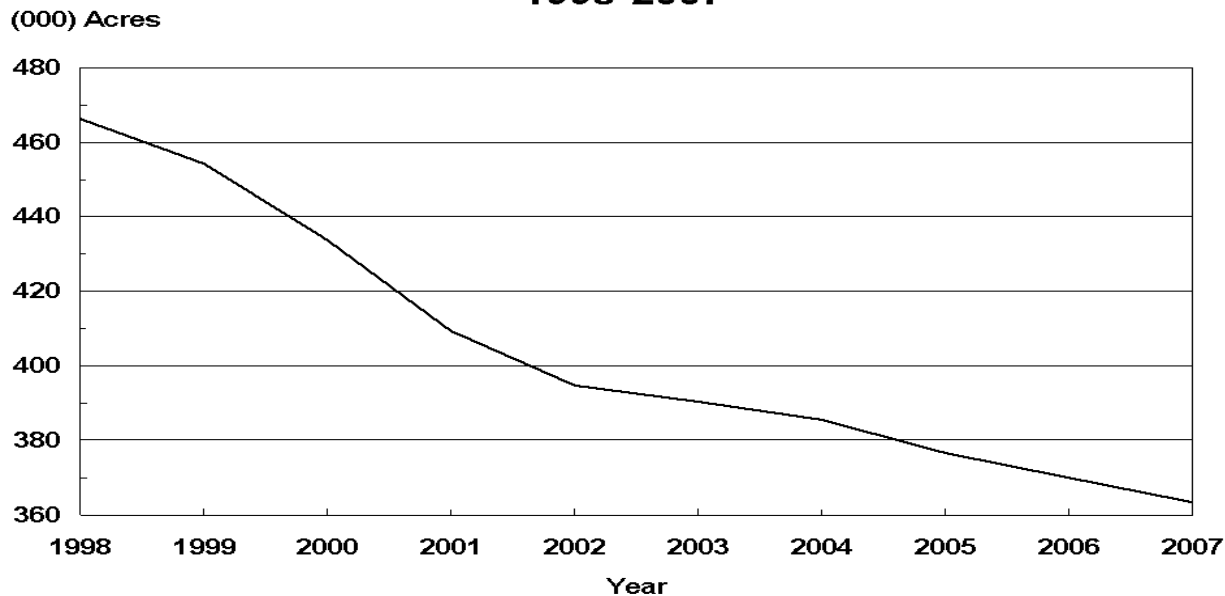
**Apples, Commercial: Processed Utilization, Use, and Price
by State and United States, 2005-2007¹ (continued)**

Use and State	Processed Utilization					
	Quantity			Price per Ton		
	2005	2006	2007	2005	2006	2007
	<i>Million Pounds</i>	<i>Million Pounds</i>	<i>Million Pounds</i>	<i>Dollars</i>	<i>Dollars</i>	<i>Dollars</i>
Frozen						
NY	40.0	50.0	50.0	174.00	181.00	291.00
Oth Sts	219.4	149.8	127.7	126.00	137.00	214.00
US	259.4	199.8	177.7	134.00	148.00	236.00
Dried						
US	191.1	252.8	203.7	119.00	124.00	364.00
Fresh Slices						
US	97.7	190.3	215.4	229.00	284.00	260.00
Other ²						
MI	8.0			180.00		
NY	5.0	10.0	10.0	140.00	156.00	108.00
Oth Sts	50.5	51.4	52.9	158.00	165.00	202.00
US	63.5	61.4	62.9	160.00	163.00	187.00

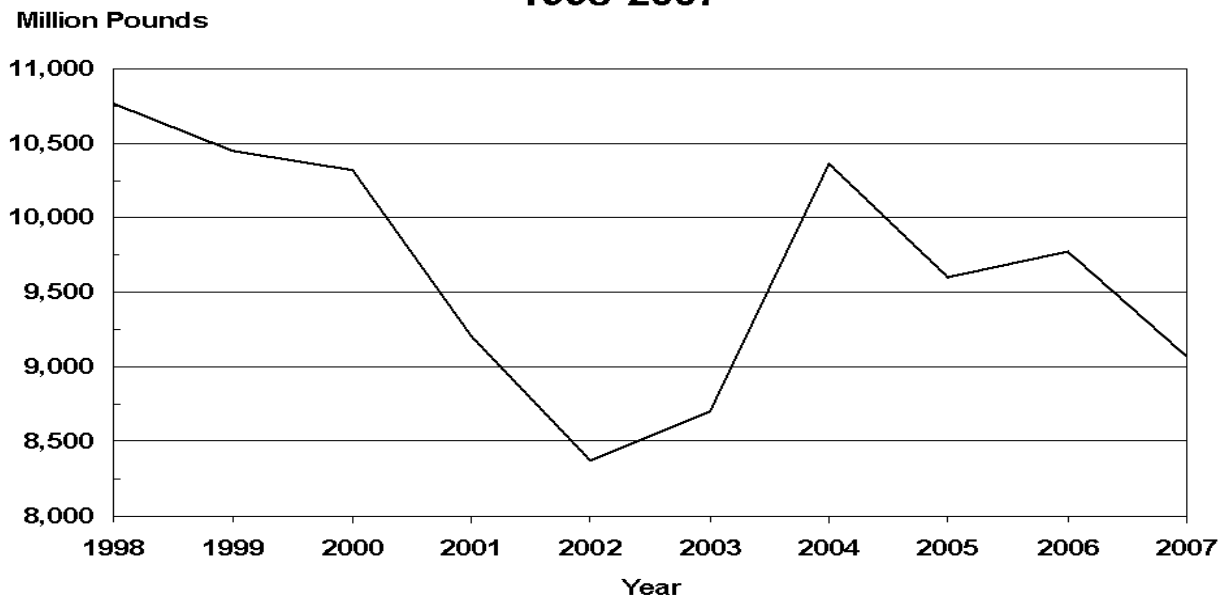
¹ Missing data included in Other States to avoid disclosure of individual operations.

² Includes vinegar, wine, and slices for pie making.

U.S. Apples Bearing Acres 1998-2007



U.S. Apples Utilized Production 1998-2007



**Miscellaneous Fruits: Bearing Acreage, Yield, Production, and Utilization
by State and United States, 2005-2007**

Crop, State, and Season	Bearing Acreage	Yield Per Acre ¹	Production		Utilization	
			Total	Utilized	Fresh	Processed
	<i>Acres</i>	<i>Tons</i>	<i>Tons</i>	<i>Tons</i>	<i>Tons</i>	<i>Tons</i>
Apricots ²						
CA						
2005	14,500	5.21	75,500	70,500	18,500	52,000
2006	13,800	2.83	39,000	39,000	9,000	30,000
2007	13,800	5.87	81,000	81,000	23,000	58,000
UT						
2005			250	245		
2006			280	255		
2007			260	260		
WA						
2005			5,900	5,900		
2006			5,200	5,200		
2007			7,200	7,200		
US						
2005	15,830	5.16	81,650	76,645	23,645	53,000
2006	14,870	2.99	44,480	44,455	13,755	30,700
2007	14,870	5.95	88,460	88,460	29,270	59,190
Avocados						
CA						
2005-06	62,100	4.83	300,000	300,000	300,000	
2006-07	65,000	2.03	132,000	132,000	132,000	
2007-08	66,000	2.59	171,000	171,000	171,000	
FL						
2005-06	5,300	2.26	12,000	12,000	12,000	
2006-07	6,500	2.15	14,000	14,000	14,000	
2007-08	7,000	3.93	27,500	27,500	27,500	
HI						
2005-06	300	1.33	400	400	400	
2006-07	280	1.57	440	440	440	
2007-08	250	1.68	420	420	420	
US						
2005-06	67,700	4.61	312,400	312,400	312,400	
2006-07	71,780	2.04	146,440	146,440	146,440	
2007-08	73,250	2.72	198,920	198,920	198,920	
Dates						
CA						
2005	5,700	3.02	17,200	17,200	17,200	
2006	6,000	2.95	17,700	17,700	17,700	
2007	5,900	2.76	16,300	16,300	16,300	

¹ Yield is based on total production.

² Missing data not published to avoid disclosure of individual operations.

**Miscellaneous Fruits: Price and Value by State
and United States, 2005-2007 ¹**

Crop, State, and Season	Price per Ton			Value of Production		
	Fresh	Processed	All	Fresh	Processed	Total
	<i>Dollars</i>	<i>Dollars</i>	<i>Dollars</i>	<i>1,000 Dollars</i>	<i>1,000 Dollars</i>	<i>1,000 Dollars</i>
Apricots ²						
CA						
2005	1,090.00	271.00	481.00	20,165	13,765	33,930
2006	1,510.00	321.00	593.00	13,590	9,538	23,128
2007	742.00	330.00	431.00	17,066	17,812	34,878
UT						
2005			959.00			235
2006			1,000.00			255
2007			815.00			212
WA						
2005			969.00			5,715
2006			1,190.00			6,180
2007			991.00			7,137
US						
2005	1,100.00	266.00	520.00	26,035	13,845	39,880
2006	1,450.00	314.00	665.00	19,965	9,598	29,563
2007	829.00	325.00	477.00	24,261	17,966	42,227
Avocados						
CA						
2005-06	1,140.00		1,140.00	342,000		342,000
2006-07	1,900.00		1,900.00	250,800		250,800
2007-08	1,810.00		1,810.00	309,510		309,510
FL						
2005-06	940.00		940.00	11,280		11,280
2006-07	912.00		912.00	12,768		12,768
2007-08	440.00		440.00	12,100		12,100
HI						
2005-06	1,320.00		1,320.00	528		528
2006-07	1,360.00		1,360.00	598		598
2007-08	1,360.00		1,360.00	571		571
US						
2005-06	1,130.00		1,130.00	353,808		353,808
2006-07	1,800.00		1,800.00	264,166		264,166
2007-08	1,620.00		1,620.00	322,181		322,181
Dates						
CA						
2005	1,430.00		1,430.00	24,596		24,596
2006	2,140.00		2,140.00	37,878		37,878
2007	2,290.00		2,290.00	37,327		37,327

¹ Missing data not published to avoid disclosure of individual operations.

² Apricot processed price excludes dried. Processing value includes dried.

**Miscellaneous Fruits: Bearing Acreage, Yield, Production, and Utilization
by State and United States, 2005-2007¹**

Crop, State, and Season	Bearing Acreage	Yield Per Acre ²	Production		Utilization	
			Total	Utilized	Fresh	Processed
	<i>Acres</i>	<i>Tons</i>	<i>Tons</i>	<i>Tons</i>	<i>Tons</i>	<i>Tons</i>
Figs ³						
CA						
2005	12,800	4.08	52,200	52,200	6,900	45,300
2006	11,500	4.05	46,600	46,600	7,600	39,000
2007	10,200	5.06	51,600	51,600	8,100	43,500
Kiwifruit						
CA						
2005	4,500	8.27	37,200	36,200	34,200	2,000
2006	4,000	6.53	26,100	25,400	23,400	2,000
2007	4,000	6.13	24,500	23,700	21,700	2,000
Nectarines ⁴						
CA						
2005	35,500	6.73	239,000	239,000	239,000	
2006	35,500	6.14	218,000	218,000	218,000	
2007	35,500	7.58	269,000	269,000	269,000	
WA						
2005	1,400	8.21	11,500	11,500	11,500	
2006	1,400	9.93	13,900	13,900	13,900	
2007	1,400	10.00	14,000	14,000	14,000	
US						
2005	36,900	6.79	250,500	250,500	250,500	
2006	36,900	6.28	231,900	231,900	231,900	
2007	36,900	7.67	283,000	283,000	283,000	
Olives						
CA						
2005	32,000	4.44	142,000	142,000	500	141,500
2006	31,000	0.76	23,500	23,500	500	23,000
2007	31,000	4.27	132,500	132,500	500	132,000
Plums						
CA						
2005	36,000	4.75	171,000	171,000		
2006	37,000	4.27	158,000	158,000		
2007	37,000	4.11	152,000	152,000		

¹ Missing data not published to avoid disclosure of individual operations.

² Yield is based on total production.

³ Small quantities of canned figs are included in fresh to avoid disclosure of individual operations.

⁴ Small quantities of processed nectarines are included in fresh to avoid disclosure of individual operations.

**Miscellaneous Fruits: Price and Value by State
and United States, 2005-2007¹**

Crop, State, and Season	Price per Ton			Value of Production		
	Fresh	Processed	All	Fresh	Processed	Total
	<i>Dollars</i>	<i>Dollars</i>	<i>Dollars</i>	<i>1,000 Dollars</i>	<i>1,000 Dollars</i>	<i>1,000 Dollars</i>
Figs						
CA						
2005			497.00			25,919
2006			554.00			25,815
2007			483.00			24,921
Kiwifruit						
CA						
2005			620.00			22,461
2006			911.00			23,148
2007			950.00			22,517
Nectarines ²						
CA						
2005	504.00		504.00	120,456		120,456
2006	517.00		517.00	112,706		112,706
2007	331.00		331.00	89,039		89,039
WA						
2005	564.00		564.00	6,486		6,486
2006	597.00		597.00	8,298		8,298
2007	519.00		519.00	7,266		7,266
US						
2005	507.00		507.00	126,942		126,942
2006	522.00		522.00	121,004		121,004
2007	340.00		340.00	96,305		96,305
Olives						
CA						
2005	500.00	564.00	564.00	250	79,847	80,097
2006	500.00	777.00	771.00	250	17,869	18,119
2007	500.00	655.00	654.00	250	86,444	86,694
Plums						
CA						
2005			541.00			92,463
2006			688.00			108,648
2007			665.00			101,077

¹ Missing data not published to avoid disclosure of individual operations.

² Small quantities of processed nectarines are included in fresh to avoid disclosure of individual operations.

**Miscellaneous Fruits: Bearing Acreage, Yield, Production, and Utilization
by State and United States, 2005-2007 ¹**

Crop, State, and Season	Bearing Acreage	Yield Per Acre ²	Production		Utilization	
			Total	Utilized	Fresh	Processed
	<i>Acres</i>	<i>Tons</i>	<i>Tons</i>	<i>Tons</i>	<i>Tons</i>	<i>Tons</i>
Prunes & Plums						
ID						
2005	480	4.17	2,000	1,950		
2006	480	4.17	2,000	1,900		
2007	470	3.83	1,800	1,720		
MI						
2005	750	2.67	2,000	2,000	450	1,550
2006	700	5.14	3,600	3,400	1,800	1,600
2007	650	4.77	3,100	2,000	900	1,100
OR						
2005	1,500	1.00	1,500	1,500	1,200	300
2006	1,500	7.00	10,500	8,500	2,500	6,000
2007	1,500	2.00	3,000	3,000	1,800	1,200
WA						
2005	800	4.50	3,600	3,600		
2006	750	7.20	5,400	5,400		
2007	650	6.46	4,200	4,200		
4-State Total						
2005	3,530	2.58	9,100	9,050	5,500	3,550
2006	3,430	6.27	21,500	19,200	9,550	9,650
2007	3,270	3.70	12,100	10,920	6,420	4,500
Prunes (Dried Basis)						
CA						
2005	67,000	1.45	97,000	94,000		94,000
2006	65,000	3.05	198,000	189,000		189,000
2007	65,000	1.28	83,000	81,000		81,000

¹ Missing data not published to avoid disclosure of individual operations.

² Yield is based on total production.

**Miscellaneous Fruits: Price and Value by State
and United States, 2005-2007¹**

Crop, State, and Season	Price per Ton			Value of Production		
	Fresh	Processed	All	Fresh	Processed	Total
	<i>Dollars</i>	<i>Dollars</i>	<i>Dollars</i>	<i>1,000 Dollars</i>	<i>1,000 Dollars</i>	<i>1,000 Dollars</i>
Prunes & Plums						
ID						
2005			999.00			1,948
2006			887.00			1,686
2007			709.00			1,219
MI						
2005	760.00	245.00	361.00	342	380	722
2006	730.00	249.00	504.00	1,314	399	1,713
2007	765.00	173.00	440.00	689	190	879
OR						
2005	445.00	300.00	416.00	534	90	624
2006	496.00	274.00	339.00	1,240	1,645	2,885
2007	501.00	302.00	421.00	902	362	1,264
WA						
2005			498.00			1,791
2006			443.00			2,394
2007			380.00			1,594
4-State Total						
2005	759.00	257.00	562.00	4,172	913	5,085
2006	639.00	267.00	452.00	6,105	2,573	8,678
2007	622.00	213.00	454.00	3,996	960	4,956
Prunes (Dried Basis)						
CA						
2005		1,470.00	1,470.00		138,180	138,180
2006		1,390.00	1,390.00		262,710	262,710
2007		1,450.00	1,450.00		117,450	117,450

¹ Missing data not published to avoid disclosure of individual operations.

**Miscellaneous Fruits: Processed Utilization, Use, and Price
by State and United States, 2005-2007**

Crop, Use, and State	Processed Utilization					
	Quantity			Price per Ton		
	2005	2006	2007	2005	2006	2007
	<i>Tons</i>	<i>Tons</i>	<i>Tons</i>	<i>Dollars</i>	<i>Dollars</i>	<i>Dollars</i>
Apricots						
Canned						
CA	23,500	14,900	24,000	285.00	359.00	362.00
Dried (Fresh Basis)						
CA	11,500	5,500	13,000	244.00	303.00	229.00
Figs						
Dried (Fresh Basis)						
CA	45,300	39,000	43,500	282.00	276.00	291.00
Olives						
Canned						
CA	100,000	17,000	96,000	667.00	926.00	700.00
Crushed for Oil						
CA	14,000	4,000	12,000	526.00	405.00	775.00
Limited						
CA	21,200	1,500	20,000	271.00	335.00	496.00
Undersized						
CA	6,300	500	4,000	6.00	7.00	6.00
Prunes & Plums						
Canned						
4-State Total	2,450	3,250	2,550	262.00	277.00	217.00
Frozen						
4-State Total	420	2,100	650	250.00	213.00	200.00
Dried & Other						
4-State Total	680	4,300	1,300	244.00	285.00	213.00

**Olives: Variety and Total Production, California
2005-2007**

Variety	Total Production		
	2005	2006	2007
	<i>Tons</i>	<i>Tons</i>	<i>Tons</i>
Manzanillo	116,000	16,000	112,000
Sevillano	20,000	5,500	14,000
All Other ¹	6,000	2,000	6,500
Total	142,000	23,500	132,500

¹ Includes production for varieties that were or will be used for canned, oil, and other specialty products.

California Dry Fruits: Production, Use, and Price, 2005-2007¹

Crop	Quantity			Price per Ton		
	2005	2006	2007	2005	2006	2007
	<i>Tons</i>	<i>Tons</i>	<i>Tons</i>	<i>Dollars</i>	<i>Dollars</i>	<i>Dollars</i>
Fresh Basis						
Apricots	11,500	5,500	13,000	244.00	303.00	229.00
Figs	45,300	39,000	43,500	282.00	276.00	291.00
Grapes						
Raisin	1,604,000	1,394,000	1,575,000	217.00	233.00	236.00
Table	41,000	30,000	28,000	239.00	232.00	231.00
Peaches						
Freestone	12,700	13,100	12,700	46.00	79.00	57.00
Pears						
Bartlett	2,700			240.00		
Prunes	286,700	604,800	234,900	482.00	434.00	500.00
Dried Basis						
Apricots ²	1,360	640	1,970	2,060.00	2,600.00	1,510.00
Figs ³						
Standard	12,500	11,100	11,100	1,010.00	960.00	1,120.00
Sub-Std.	2,600	1,900	3,400	60.00	60.00	60.00
All Dried	15,100	13,000	14,500	847.00	829.00	873.00
Grapes						
Raisin ^{4 5}	348,600	303,000	350,000	1,000.00	1,070.00	1,060.00
Table ⁶	8,900	6,500	6,000	1,100.00	1,070.00	1,080.00
Peaches ⁷						
Freestone	1,160	1,290	1,365	504.00	802.00	530.00
Pears ⁸						
Bartlett	400			1,620.00		
Prunes ⁹	94,000	189,000	81,000	1,470.00	1,390.00	1,450.00

¹ Missing data not published to avoid disclosure of individual operations.

² Dried basis 1 ton of dried apricots equivalent to 8.46 for 2005, 8.59 tons for 2006, and 6.60 tons for 2007.

³ Dried basis 1 ton of all figs equivalent to 3.00 tons for 2005, 2006, and 2007.

⁴ Includes substandard raisins diverted to other uses.

⁵ Dried basis 1 ton of raisins equivalent to 4.60 tons for 2005, 4.60 tons for 2006, and 4.50 tons for 2007.

⁶ Dried basis 1 ton of table type raisins equivalent to 4.61 tons for 2005, 4.62 tons for 2006, and 4.67 tons for 2007.

⁷ Dried basis 1 ton of Freestone peaches equivalent to 10.95 tons for 2005, 10.16 tons for 2006, and 9.30 tons for 2007.

⁸ Dried basis 1 ton of Bartlett pears equivalent to 6.75 tons for 2005.

⁹ Dried basis 1 ton of dried prunes equivalent to 3.05 tons for 2005, 3.20 tons for 2006, and 2.90 tons for 2007.

**Strawberries for Fresh Market and Processing: Area Planted and Harvested,
Yield, Production, Price, and Value by State and United States, 2005-2007**

State	Area Planted			Area Harvested		
	2005	2006	2007	2005	2006	2007
	<i>Acres</i>	<i>Acres</i>	<i>Acres</i>	<i>Acres</i>	<i>Acres</i>	<i>Acres</i>
CA	34,300	35,800	35,500	34,300	35,800	35,500
FL	7,300	7,400	8,400	7,300	7,300	8,300
MI	1,100	1,000	950	1,000	850	800
NY	1,700	1,700	1,700	1,500	1,500	1,500
NC	1,600	1,700	1,700	1,500	1,600	1,500
OH	1,100	1,100	1,100	800	750	780
OR	3,100	3,100	2,800	2,200	2,100	1,900
PA	1,300	1,300	1,300	1,300	1,300	1,300
WA	1,500	1,400	1,400	1,500	1,400	1,400
WI	900	830	800	800	680	750
US	53,900	55,330	55,650	52,200	53,280	53,730
	Yield per Acre			Production		
	2005	2006	2007	2005	2006	2007
	<i>Cwt</i>	<i>Cwt</i>	<i>Cwt</i>	<i>1,000 Cwt</i>	<i>1,000 Cwt</i>	<i>1,000 Cwt</i>
CA	600	590	605	20,580	21,163	21,540
FL	245	280	320	1,789	2,044	2,656
MI	52	65	50	52	55	40
NY	35	29	31	52	44	46
NC	130	135	125	195	216	189
OH	53	57	49	42	43	38
OR	115	110	130	250	230	247
PA	54	57	47	70	74	61
WA	100	91	96	150	128	134
WI	51	63	57	41	43	43
US	445	451	465	23,221	24,040	24,994
	Value					
	Per Cwt			Total		
	2005	2006	2007	2005	2006	2007
	<i>Dollars</i>	<i>Dollars</i>	<i>Dollars</i>	<i>1,000 Dollars</i>	<i>1,000 Dollars</i>	<i>1,000 Dollars</i>
CA	54.60	56.70	62.10	1,122,834	1,199,341	1,338,585
FL	110.00	117.00	124.00	196,790	239,148	329,344
MI	93.80	114.00	117.00	4,878	6,285	4,668
NY	155.00	170.00	165.00	8,060	7,480	7,590
NC	95.00	90.00	95.00	18,525	19,440	17,955
OH	137.00	152.00	154.00	5,754	6,536	5,852
OR	54.70	69.10	66.30	13,680	15,882	16,378
PA	183.00	167.00	187.00	12,810	12,358	11,407
WA	46.30	60.40	59.60	6,940	7,728	7,982
WI	133.00	134.00	136.00	5,453	5,762	5,848
US	60.10	63.20	69.80	1,395,724	1,519,960	1,745,609

**Strawberries for Fresh Market and Processing: Production, Price, and Value
by Utilization, State, and United States, 2005-2007**

Utilization and State	Production					
	2005		2006		2007	
	<i>1,000 Cwt</i>		<i>1,000 Cwt</i>		<i>1,000 Cwt</i>	
Fresh Market						
CA	15,825		16,542		17,159	
FL	1,789		2,044		2,656	
MI	47		52		38	
NY	52		44		46	
NC	195		216		189	
OH	42		43		38	
OR	24		36		27	
PA	70		74		61	
WA	20		17		18	
WI	41		43		43	
US	18,105		19,111		20,275	
Processing						
CA	4,755		4,621		4,381	
MI	5		3		2	
OR	226		194		220	
WA	130		111		116	
US	5,116		4,929		4,719	
	Value					
	Per Unit			Total		
	2005	2006	2007	2005	2006	2007
	<i>Dollars Per Cwt</i>	<i>Dollars Per Cwt</i>	<i>Dollars Per Cwt</i>	<i>1,000 Dollars</i>	<i>1,000 Dollars</i>	<i>1,000 Dollars</i>
Fresh Market						
CA	62.60	65.10	71.50	990,645	1,076,884	1,226,869
FL	110.00	117.00	124.00	196,790	239,148	329,344
MI	99.00	118.00	120.00	4,653	6,136	4,560
NY	155.00	170.00	165.00	8,060	7,480	7,590
NC	95.00	90.00	95.00	18,525	19,440	17,955
OH	137.00	152.00	154.00	5,754	6,536	5,852
OR	118.00	134.00	134.00	2,832	4,824	3,618
PA	183.00	167.00	187.00	12,810	12,358	11,407
WA	113.00	91.50	97.40	2,260	1,556	1,753
WI	133.00	134.00	136.00	5,453	5,762	5,848
US	68.90	72.20	79.60	1,247,782	1,380,124	1,614,796
Processing						
CA	27.80	26.50	25.50	132,189	122,457	111,716
MI	45.00	49.50	54.00	225	149	108
OR	48.00	57.00	58.00	10,848	11,058	12,760
WA	36.00	55.60	53.70	4,680	6,172	6,229
US	28.90	28.40	27.70	147,942	139,836	130,813

**Berries: Harvested Acreage, Yield, Production, and Utilization
by Crop, State, and United States, 2005-2007**

Crop, State, and Year	Area Harvested	Yield Per Acre ¹	Production		Utilization	
			Total	Utilized	Fresh	Processed
	<i>Acres</i>	<i>Pounds</i>	<i>1,000 Pounds</i>	<i>1,000 Pounds</i>	<i>1,000 Pounds</i>	<i>1,000 Pounds</i>
Cultivated Blueberries						
AL ²						
2005	280	1,860	750	520	520	
2006	270	1,190	440	320	320	
2007	170	1,530	290	260	260	
AR ²						
2005	530	2,550	1,500	1,350	1,350	
2006	530	3,020	1,650	1,600	1,600	
2007	150	467	70	70	70	
CA						
2005 ²	2,000	4,550	9,100	9,100	9,100	
2006 ²	2,300	4,350	10,000	10,000	10,000	
2007	2,700	6,110	16,500	16,500	14,500	2,000
FL ²						
2005	2,500	2,080	5,200	5,200	5,200	
2006	2,600	2,690	7,040	7,000	7,000	
2007	2,600	3,000	7,800	7,800	7,800	
GA						
2005	6,000	4,330	26,000	26,000	12,000	14,000
2006	7,000	4,500	31,500	31,500	16,000	15,500
2007	4,500	2,000	9,000	9,000	6,000	3,000
IN						
2005	600	5,830	3,500	3,500	2,000	1,500
2006	620	5,480	3,400	3,400	1,900	1,500
2007	500	2,800	1,600	1,400	800	600
MI						
2005	16,800	3,930	66,000	66,000	25,000	41,000
2006	18,100	4,970	90,000	90,000	29,000	61,000
2007	18,500	5,030	93,000	93,000	30,000	63,000
MS ³						
2005						
2006	2,000	2,300	4,600	4,600	2,600	2,000
2007	2,300	4,130	9,500	9,500	5,000	4,500
NJ						
2005	7,500	6,000	45,000	45,000	33,000	12,000
2006	7,600	6,840	52,000	52,000	40,000	12,000
2007	7,600	7,110	54,000	54,000	41,000	13,000
NY						
2005	700	2,000	1,500	1,400	1,350	50
2006	700	2,860	2,200	2,000	1,950	50
2007	700	3,290	2,500	2,300	2,250	50
NC						
2005	5,000	5,200	26,000	26,000	16,100	9,900
2006	4,700	5,430	25,500	25,500	17,900	7,600
2007	4,200	3,450	14,500	14,500	9,800	4,700
OR						
2005	4,000	8,630	34,500	34,500	13,800	20,700
2006	4,400	8,090	35,600	35,600	13,900	21,700
2007	4,600	9,780	45,000	45,000	16,800	28,200
WA						
2005	2,800	7,000	19,600	19,600	3,900	15,700
2006	3,400	5,590	19,000	19,000	4,500	14,500
2007	3,700	8,000	29,600	29,600	11,200	18,400
US						
2005	48,710	4,890	238,650	238,170	123,100	115,070
2006	54,220	5,210	282,930	282,520	146,130	136,390
2007	52,220	5,420	283,360	282,930	145,480	137,450

¹ Yield is based on utilized production.

² Small quantities of processed blueberries are included in fresh to avoid disclosure of individual operations.

³ Estimates began in 2006.

**Berries: Price and Value by Crop, State,
and United States, 2005-2007**

Crop, State and Year	Price per Pound			Value of Production		
	Fresh	Processed	All	Fresh	Processed	Total
	<i>Dollars</i>	<i>Dollars</i>	<i>Dollars</i>	<i>1,000 Dollars</i>	<i>1,000 Dollars</i>	<i>1,000 Dollars</i>
Cultivated Blueberries						
AL ¹						
2005	0.906		0.906	471		471
2006	1.380		1.380	442		442
2007	1.590		1.590	413		413
AR ¹						
2005	1.740		1.740	2,349		2,349
2006	1.550		1.550	2,486		2,486
2007	1.640		1.640	115		115
CA						
2005 ¹	4.460		4.460	40,583		40,583
2006 ¹	2.320		2.320	23,156		23,156
2007	1.950	0.970	1.830	28,275	1,940	30,215
FL ¹						
2005	6.300		6.300	32,760		32,760
2006	4.700		4.700	32,900		32,900
2007	5.000		5.000	39,000		39,000
GA						
2005	1.730	0.790	1.220	20,760	11,060	31,820
2006	2.370	1.410	1.900	37,920	21,855	59,775
2007	3.100	1.420	2.540	18,600	4,260	22,860
IN						
2005	1.410	0.970	1.220	2,820	1,455	4,275
2006	1.600	1.320	1.480	3,040	1,980	5,020
2007	2.200	1.550	1.920	1,760	930	2,690
MI						
2005	1.700	1.000	1.270	42,500	41,000	83,500
2006	2.150	1.430	1.660	62,350	87,305	149,655
2007	2.050	1.650	1.780	61,500	103,956	165,456
MS ²						
2005						
2006	1.400	1.200	1.310	3,640	2,400	6,040
2007	2.100	1.500	1.820	10,500	6,750	17,250
NJ						
2005	1.310	1.020	1.230	43,230	12,240	55,470
2006	1.640	1.510	1.610	65,600	18,120	83,720
2007	1.700	1.580	1.670	69,700	20,540	90,240
NY						
2005	1.420	0.920	1.400	1,917	46	1,963
2006	1.410	0.920	1.400	2,750	46	2,796
2007	1.470	1.300	1.470	3,308	65	3,373
NC						
2005	1.800	0.780	1.410	28,980	7,722	36,702
2006	2.150	1.350	1.910	38,485	10,260	48,745
2007	2.400	1.500	2.110	23,520	7,050	30,570
OR						
2005	1.210	0.800	0.964	16,698	16,560	33,258
2006	1.790	1.300	1.490	24,881	28,210	53,091
2007	1.600	1.440	1.500	26,880	40,608	67,488
WA						
2005	1.330	0.890	0.978	5,187	13,973	19,160
2006	2.380	1.340	1.590	10,710	19,430	30,140
2007	2.150	1.390	1.680	24,080	25,576	49,656
US						
2005	1.930	0.910	1.440	237,595	104,716	342,311
2006	2.110	1.390	1.760	307,762	190,204	497,966
2007	2.110	1.540	1.840	307,651	211,675	519,326

¹ Small quantities of processed blueberries are included in fresh to avoid disclosure of individual operations.

² Estimates began in 2006.

**Berries: Harvested Acreage, Yield, Production, and Utilization
by Crop, State, and United States, 2005-2007**

Crop, State, and Year	Area Harvested	Yield Per Acre ¹	Production		Utilization	
			Total	Utilized	Fresh	Processed
	<i>Acres</i>	<i>Pounds</i>	<i>1,000 Pounds</i>	<i>1,000 Pounds</i>	<i>1,000 Pounds</i>	<i>1,000 Pounds</i>
Wild						
Blueberries						
ME						
2005			60,150	60,150	350	59,800
2006			74,600	74,600	400	74,200
2007			77,250	77,250	450	76,800
Boysenberries						
CA ²						
2005	310	9,030	2,800	2,800		
2006	320	11,300	3,630	3,630		
2007	320	10,600	3,380	3,380		
OR						
2005	600	3,830	2,330	2,300	200	2,100
2006	600	3,830	2,400	2,300	100	2,200
2007	800	4,880	4,400	3,900	100	3,800
US ²						
2005	910	5,600	5,130	5,100		
2006	920	6,450	6,030	5,930		
2007	1,120	6,500	7,780	7,280		
Loganberries						
OR						
2005	60	3,670	290	220	20	200
2006	60	2,000	125	120	10	110
2007	30	3,000	90	90	10	80
Black						
Raspberries						
OR						
2005	1,300	3,260	4,240	4,240	20	4,220
2006	1,500	2,670	4,010	4,010	10	4,000
2007	1,400	2,610	3,700	3,650	50	3,600
Red						
Raspberries						
OR						
2005	1,900	3,790	7,200	7,200	1,300	5,900
2006	1,900	3,240	6,200	6,150	950	5,200
2007	1,700	2,940	5,000	5,000	900	4,100
WA						
2005	9,500	7,400	70,300	70,300	1,400	68,900
2006	9,600	6,000	57,600	57,600	850	56,750
2007	9,500	5,800	55,100	55,100	550	54,550
US						
2005	11,400	6,800	77,500	77,500	2,700	74,800
2006	11,500	5,540	63,800	63,750	1,800	61,950
2007	11,200	5,370	60,100	60,100	1,450	58,650
All						
Raspberries						
CA ²						
2005	4,200	24,000	100,800	100,800		
2006	4,300	27,000	116,100	116,100		
2007	4,400	22,500	99,000	99,000		

¹ Yield is based on utilized production.

² No breakdown of utilization available.

**Berries: Price and Value by Crop, State,
and United States, 2005-2007**

Crop, State, and Year	Price per Pound			Value of Production		
	Fresh	Processed	All	Fresh	Processed	Total
	<i>Dollars</i>	<i>Dollars</i>	<i>Dollars</i>	<i>1,000 Dollars</i>	<i>1,000 Dollars</i>	<i>1,000 Dollars</i>
Wild						
Blueberries						
ME						
2005	1.600	0.650	0.656	560	38,870	39,430
2006	1.700	0.800	0.805	680	59,360	60,040
2007	1.900	1.070	1.070	855	82,176	83,031
Boysenberries						
CA ¹						
2005			1.330			3,724
2006			1.070			3,868
2007			0.718			2,428
OR						
2005	1.630	1.480	1.490	326	3,108	3,434
2006	1.580	1.410	1.420	158	3,102	3,260
2007	1.540	0.540	0.566	154	2,052	2,206
US ¹						
2005			1.400			7,158
2006			1.200			7,128
2007			0.637			4,634
Loganberries						
OR						
2005	1.420	0.800	0.855	28	160	188
2006	1.320	0.791	0.833	13	87	100
2007	1.620	0.900	0.978	16	72	88
Black						
Raspberries						
OR						
2005	1.870	2.460	2.460	37	10,381	10,418
2006	1.980	2.440	2.440	20	9,760	9,780
2007	1.810	0.970	0.982	91	3,492	3,583
Red						
Raspberries						
OR						
2005	1.550	0.660	0.821	2,015	3,894	5,909
2006	1.730	0.610	0.783	1,644	3,172	4,816
2007	1.510	0.750	0.887	1,359	3,075	4,434
WA						
2005	1.970	0.530	0.559	2,758	36,517	39,275
2006	2.120	0.330	0.356	1,802	18,728	20,530
2007	1.110	0.500	0.506	611	27,275	27,886
US						
2005	1.770	0.540	0.583	4,773	40,411	45,184
2006	1.910	0.354	0.398	3,446	21,900	25,346
2007	1.360	0.517	0.538	1,970	30,350	32,320
All						
Raspberries						
CA ¹						
2005			1.990			200,592
2006			2.150			249,615
2007			2.880			285,120

¹ No breakdown of utilization available.

Oregon Blackberries: Harvested Acreage, Yield, Production, and Utilization by Variety, 2005-2007

Variety and Year	Area Harvested	Yield Per Acre ¹	Production		Utilization	
			Total	Utilized	Fresh	Processed
	<i>Acres</i>	<i>Pounds</i>	<i>1,000 Pounds</i>	<i>1,000 Pounds</i>	<i>1,000 Pounds</i>	<i>1,000 Pounds</i>
Cultivated Blackberries (OR)						
Marion						
2005	4,300	6,140	26,800	26,400	400	26,000
2006	4,500	5,090	22,900	22,900	900	22,000
2007	4,500	6,510	32,300	29,300	300	29,000
Evergreen						
2005	900	6,330	5,700	5,700	300	5,400
2006	800	6,000	4,800	4,800	200	4,600
2007	600	10,500	6,300	6,300	400	5,900
Other						
2005	1,300	12,500	16,400	16,300	1,500	14,800
2006	1,600	9,190	14,900	14,700	1,600	13,100
2007	2,000	11,700	25,300	23,300	2,000	21,300
All						
2005	6,500	7,450	48,900	48,400	2,200	46,200
2006	6,900	6,140	42,600	42,400	2,700	39,700
2007	7,100	8,300	63,900	58,900	2,700	56,200

¹ Yield is based on utilized production.

**Oregon Blackberries: Price and Value
by Variety, 2005-2007**

Variety and Year	Price per Pound			Value of Production		
	Fresh	Processed	All	Fresh	Processed	Total
	<i>Dollars</i>	<i>Dollars</i>	<i>Dollars</i>	<i>1,000 Dollars</i>	<i>1,000 Dollars</i>	<i>1,000 Dollars</i>
Cultivated Blackberries (OR)						
Marion						
2005	1.360	0.710	0.720	544	18,460	19,004
2006	1.740	0.800	0.837	1,566	17,600	19,166
2007	1.330	0.490	0.499	399	14,210	14,609
Evergreen						
2005	1.260	0.680	0.711	378	3,672	4,050
2006	1.800	0.690	0.736	360	3,174	3,534
2007	1.490	0.340	0.413	596	2,006	2,602
Other						
2005	1.710	0.760	0.847	2,565	11,248	13,813
2006	1.310	0.870	0.918	2,096	11,397	13,493
2007	1.220	0.420	0.489	2,440	8,946	11,386
All						
2005	1.590	0.723	0.762	3,487	33,380	36,867
2006	1.490	0.810	0.854	4,022	32,171	36,193
2007	1.270	0.448	0.486	3,435	25,162	28,597

**Sweet Cherries: Bearing Acreage, Yield, Production, and Utilization
by State and United States, 2005-2007 ¹**

State and Year	Bearing Acreage	Yield Per Acre ²	Production		Utilization	
			Total	Utilized	Fresh	Processed
	<i>Acres</i>	<i>Tons</i>	<i>Tons</i>	<i>Tons</i>	<i>Tons</i>	<i>Tons</i>
CA						
2005	27,000	1.95	52,700	48,600	35,600	13,000
2006	29,000	1.45	42,100	40,200	32,400	7,800
2007	30,000	2.83	85,000	81,800	67,400	14,400
ID						
2005	850	2.00	1,700	1,700		
2006	900	4.22	3,800	3,530		
2007	900	1.67	1,500	1,500		
MI						
2005	7,900	3.42	27,000	27,000	600	26,400
2006	7,700	2.60	20,000	20,000	1,000	19,000
2007	7,200	3.79	27,300	27,300	800	26,500
MT						
2005	740	1.66	1,230	1,180		
2006	750	3.20	2,400	580		
2007	720	3.39	2,440	2,180		
NY						
2005	700	1.14	800	740		
2006	700	1.37	960	860		
2007	700	1.70	1,190	1,180		
OR						
2005	12,000	2.38	28,600	25,600	14,000	11,600
2006	12,000	4.59	55,100	52,600	29,600	23,000
2007	12,500	2.80	35,000	34,000	20,500	13,500
UT						
2005	600	3.00	1,800	1,750	980	770
2006	550	3.27	1,800	1,750	910	840
2007	550	2.27	1,250	1,250	900	350
WA						
2005	29,000	4.72	137,000	137,000	113,000	24,000
2006	30,000	5.60	168,000	168,000	123,000	45,000
2007	31,000	5.06	157,000	157,000	129,000	28,000
US						
2005	78,790	3.18	250,830	243,570	167,190	76,380
2006	81,600	3.60	294,160	287,520	190,770	96,750
2007	83,570	3.72	310,680	306,210	222,560	83,650

¹ Missing data not published to avoid disclosure of individual operations.

² Yield is based on total production.

**Sweet Cherries: Price and Value by State
and United States, 2005-2007¹**

State and Year	Price per Ton			Value of Production		
	Fresh	Processed	All	Fresh	Processed	All
	<i>Dollars</i>	<i>Dollars</i>	<i>Dollars</i>	<i>1,000 Dollars</i>	<i>1,000 Dollars</i>	<i>1,000 Dollars</i>
CA						
2005	2,210.00	467.00	1,740.00	78,676	6,075	84,751
2006	3,740.00	412.00	3,090.00	121,176	3,215	124,391
2007	2,250.00	234.00	1,900.00	151,650	3,366	155,016
ID						
2005			1,950.00			3,313
2006			1,110.00			3,922
2007			2,100.00			3,146
MI						
2005	1,770.00	594.00	620.00	1,062	15,670	16,732
2006	2,750.00	671.00	775.00	2,750	12,742	15,492
2007	2,060.00	606.00	649.00	1,648	16,061	17,709
MT						
2005			3,530.00			4,165
2006			1,850.00			1,071
2007			1,630.00			3,561
NY						
2005			1,710.00			1,267
2006			2,290.00			1,973
2007			2,980.00			3,518
OR						
2005	1,930.00	876.00	1,450.00	27,020	10,166	37,186
2006	1,048.00	733.00	910.00	31,021	16,862	47,883
2007	1,892.00	776.00	1,450.00	38,786	10,470	49,256
UT						
2005	2,000.00	600.00	1,380.00	1,960	462	2,422
2006	2,320.00	700.00	1,540.00	2,111	588	2,699
2007	1,680.00	600.00	1,380.00	1,512	210	1,722
WA						
2005	2,830.00	613.00	2,440.00	319,790	14,722	334,512
2006	1,970.00	566.00	1,590.00	242,310	25,484	267,794
2007	2,400.00	483.00	2,060.00	309,600	13,528	323,128
US						
2005	2,610.00	620.00	1,990.00	436,992	47,356	484,348
2006	2,130.00	616.00	1,620.00	405,637	59,588	465,225
2007	2,310.00	527.00	1,820.00	512,968	44,088	557,056

¹ Missing data not published to avoid disclosure of individual operations.

**Tart Cherries: Bearing Acreage, Yield, Production, and Utilization
by State and United States, 2005-2007 ¹**

State and Year	Bearing Acreage	Yield Per Acre ²	Production		Utilization	
			Total	Utilized	Fresh	Processed
	<i>Acres</i>	<i>Pounds</i>	<i>Million Pounds</i>	<i>Million Pounds</i>	<i>Million Pounds</i>	<i>Million Pounds</i>
MI						
2005	26,700	7,790	208.0	208.0	0.5	207.5
2006	26,400	7,200	190.0	180.3	0.5	179.8
2007	25,700	7,630	196.0	193.0	0.5	192.5
NY						
2005	2,000	3,750	7.5	7.5		
2006	2,000	4,300	8.6	8.6		
2007	1,700	6,650	11.3	11.3		
OR						
2005	750	400	0.3	0.3		
2006	750	4,530	3.4	3.4		
2007	750	667	0.5	0.5		
PA						
2005	800	3,250	2.6	2.6		
2006	700	7,430	5.2	5.2		
2007	600	5,830	3.5	3.5		
UT						
2005	2,700	10,400	28.0	26.0		26.0
2006	2,700	10,400	28.0	25.0		25.0
2007	2,700	7,410	20.0	19.0		19.0
WA						
2005	1,600	10,300	16.5	16.5		
2006	1,550	14,400	22.3	21.7		
2007	1,550	7,420	11.5	11.4		
WI						
2005	1,800	4,170	7.5	7.5	0.1	7.4
2006	1,700	2,650	4.5	4.4		4.4
2007	1,700	6,120	10.4	10.0	0.2	9.8
US						
2005	36,350	7,440	270.4	268.4	1.2	267.2
2006	35,800	7,320	262.0	248.6	1.4	247.2
2007	34,700	7,300	253.2	248.7	1.6	247.1

¹ Missing data not published to avoid disclosure of individual operations.

² Yield is based on total production.

**Tart Cherries: Price and Value by State
and United States, 2005-2007¹**

State and Year	Price per Pound			Value of Production		
	Fresh	Processed	All	Fresh	Processed	All
	<i>Dollars</i>	<i>Dollars</i>	<i>Dollars</i>	<i>1,000 Dollars</i>	<i>1,000 Dollars</i>	<i>1,000 Dollars</i>
MI						
2005	0.500	0.228	0.229	250	47,305	47,555
2006	0.850	0.191	0.192	425	34,272	34,697
2007	0.950	0.262	0.264	475	50,430	50,905
NY						
2005			0.432			3,243
2006			0.317			2,725
2007			0.343			3,871
OR						
2005			0.380			114
2006			0.276			938
2007			0.346			173
PA						
2005			0.315			819
2006			0.283			1,474
2007			0.398			1,392
UT						
2005		0.233	0.233		6,058	6,058
2006		0.265	0.265		6,625	6,625
2007		0.250	0.250		4,750	4,750
WA						
2005			0.239			3,951
2006			0.259			5,630
2007			0.350			3,990
WI						
2005	0.500	0.290	0.293	50	2,146	2,196
2006		0.310	0.310		1,365	1,365
2007	0.490	0.280	0.284	98	2,744	2,842
US						
2005	0.893	0.235	0.238	1,071	62,865	63,936
2006	0.990	0.211	0.215	1,392	52,062	53,454
2007	1.050	0.268	0.273	1,679	66,244	67,923

¹ Missing data not published to avoid disclosure of individual operations.

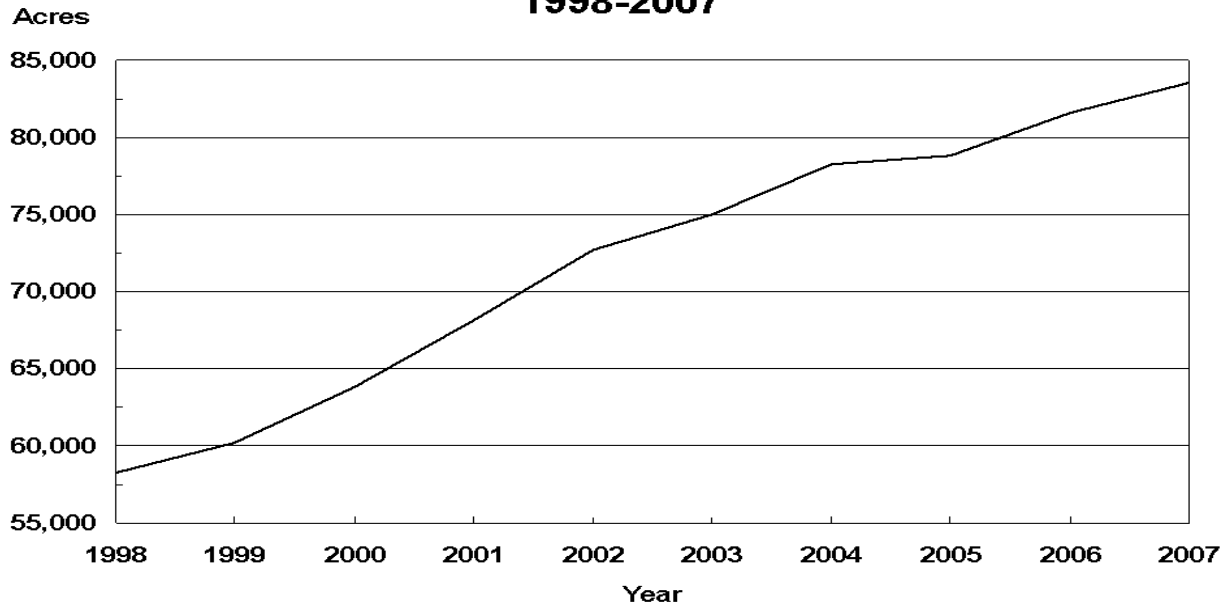
**Sweet and Tart Cherries: Processed Utilization, Use,
and Price by State and United States, 2005-2007**

Crop, Use, and State	Processed Utilization					
	Quantity			Price per Unit		
	2005	2006	2007	2005	2006	2007
	<i>Tons</i>	<i>Tons</i>	<i>Tons</i>	<i>Dollars per Ton</i>	<i>Dollars per Ton</i>	<i>Dollars per Ton</i>
Sweet Cherries						
Canned						
MI	4,350	670	1,060	630.00	800.00	730.00
OR	1,300	2,700	1,500	1,060.00	900.00	1,010.00
WA	4,000	5,500	4,000	810.00	1,130.00	1,170.00
US	9,650	8,870	6,560	763.00	1,035.00	1,062.00
Brined						
MI	17,800	12,200	17,400	550.00	550.00	440.00
OR	8,000	18,000	8,300	880.00	732.00	765.00
WA	13,000	20,000	13,000	719.00	669.00	508.00
Oth Sts	7,530	6,030	9,460	779.00	637.00	315.00
US	46,330	56,230	48,160	692.00	660.00	490.00
Other ¹						
MI	4,250	6,130	8,040	739.00	897.00	949.00
OR	2,300	2,300	3,700	760.00	546.00	704.00
WA	7,000	19,500	11,000	305.00	302.00	204.00
Oth Sts	6,850	3,720	6,190	137.00	177.00	169.00
US	20,400	31,650	28,930	390.00	420.00	468.00
	<i>Million Pounds</i>	<i>Million Pounds</i>	<i>Million Pounds</i>	<i>Dollars per Pound</i>	<i>Dollars per Pound</i>	<i>Dollars per Pound</i>
Tart Cherries						
Canned						
MI	51.0	39.0	39.0	0.240	0.160	0.270
Oth Sts	6.9	9.8	8.7	0.315	0.242	0.306
US	57.9	48.8	47.7	0.249	0.176	0.277
Frozen						
MI	146.0	114.0	143.0	0.230	0.210	0.265
Oth Sts	41.9	42.8	36.3	0.255	0.270	0.273
US	187.9	156.8	179.3	0.236	0.226	0.267
Other ²						
MI	10.5	26.8	10.5	0.141	0.153	0.191
Oth Sts	10.9	14.8	9.6	0.250	0.261	0.340
US	21.4	41.6	20.1	0.196	0.192	0.262

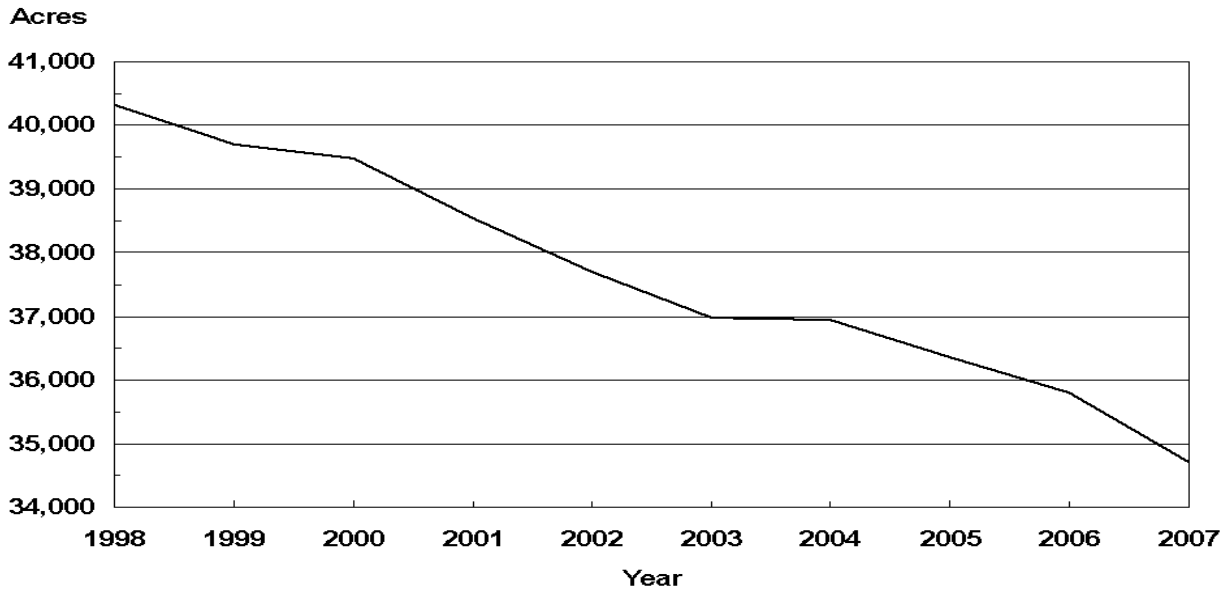
¹ Includes California canned utilization and other processed utilizations (frozen, juice, etc.) from all States.

² Juice, wine, brined, and dried.

U.S. Sweet Cherries Bearing Acres 1998-2007



U.S. Tart Cherries Bearing Acres 1998-2007



**Cranberries: Area Harvested, Yield, Production and Utilization
by State and United States, 2005-2007**

Year and State	Area Harvested	Yield per Acre ¹	Production		Utilization	
			Total	Utilized	Fresh	Processed
	<i>Acres</i>	<i>Barrels</i> ²	<i>Barrels</i> ²	<i>Barrels</i> ²	<i>Barrels</i> ²	<i>Barrels</i> ²
2005						
MA	14,100	100.9	1,423,000	1,423,000	124,000	1,299,000
NJ ³	3,100	171.9	533,000	533,000		533,000
OR	2,700	163.0	440,000	440,000	5,000	435,000
WA	1,700	110.0	187,000	187,000	18,000	169,000
WI	17,400	210.3	3,660,000	3,660,000	200,000	3,460,000
US	39,000	160.1	6,243,000	6,243,000	347,000	5,896,000
2006						
MA	14,000	135.4	1,896,000	1,896,000	155,000	1,741,000
NJ ³	3,100	156.5	485,000	480,000		480,000
OR ³	2,700	172.2	465,000	465,000		465,000
WA	1,700	67.1	114,000	114,000	30,500	83,500
WI	17,500	225.1	3,940,000	3,840,000	170,000	3,670,000
US	39,000	176.9	6,900,000	6,795,000	355,500	6,439,500
2007						
MA	13,700	111.1	1,522,000	1,522,000	101,000	1,421,000
NJ ³	3,100	171.3	531,000	531,000		531,000
OR ³	2,700	183.3	495,000	495,000		495,000
WA	1,700	103.5	176,000	176,000	29,000	147,000
WI	17,600	217.6	3,830,000	3,830,000	230,000	3,600,000
US	38,800	168.9	6,554,000	6,554,000	360,000	6,194,000

¹ Yield is based on total production.

² A barrel weighs 100 pounds.

³ Small quantities of fresh cranberries are included in processed to avoid disclosure of individual operations.

**Cranberries: Utilization, Price, and Value
by State and United States, 2005-2007**

Year and State	Price per Barrel ^{1 2}			Value of Utilized Production		
	Fresh	Processed	All	Fresh	Processed	All
	<i>Dollars</i>	<i>Dollars</i>	<i>Dollars</i>	<i>1,000 Dollars</i>	<i>1,000 Dollars</i>	<i>1,000 Dollars</i>
2005						
MA	55.90	33.70	35.60	6,932	43,776	50,708
NJ ³		35.30	35.30		18,815	18,815
OR	48.70	34.40	34.60	244	14,964	15,208
WA	56.30	35.70	37.70	1,013	6,033	7,046
WI	56.30	33.80	35.00	11,260	116,948	128,208
US	56.00	34.00	35.20	19,449	200,536	219,985
2006						
MA	63.50	39.30	41.30	9,843	68,421	78,264
NJ ³		39.20	39.20		18,816	18,816
OR ³		48.30	48.30		22,460	22,460
WA	60.70	40.00	45.50	1,851	3,340	5,191
WI	60.70	39.30	40.20	10,319	144,231	154,550
US	61.90	40.00	41.10	22,013	257,268	279,281
2007						
MA	68.60	45.00	46.60	6,929	63,945	70,874
NJ ³		42.20	42.20		22,408	22,408
OR ³		59.60	59.60		29,502	29,502
WA	64.00	42.40	46.00	1,856	6,233	8,089
WI	64.00	44.90	46.00	14,720	161,640	176,360
US	65.30	45.80	46.90	23,505	283,728	307,233

¹ Weighted average of co-op and independent sales. Co-op prices represent pool proceeds less returns for processing non-cranberry products, capital stock dividends, capital stock retains, and other retains.

² A barrel weighs 100 pounds.

³ Small quantities of fresh cranberries are included in processed to avoid disclosure of individual operations.

**Grapes: Bearing Acreage and Yield by Type,
State, and United States, 2005-2007**

State and Type	Bearing Acreage			Yield per Acre ¹		
	2005	2006	2007	2005	2006	2007
	<i>Acres</i>	<i>Acres</i>	<i>Acres</i>	<i>Tons</i>	<i>Tons</i>	<i>Tons</i>
AZ	400	400	400	2.50	2.25	2.75
AR	750	700	750	2.53	3.29	0.67
CA						
All Types	800,000	797,000	789,000	8.70	7.18	7.87
Wine	477,000	480,000	480,000	7.98	6.62	6.85
Table	83,000	83,000	82,000	10.50	8.64	9.65
Raisin	240,000	234,000	227,000	9.52	7.83	9.40
GA	1,100	1,100	1,100	3.18	2.64	2.64
MI	14,200	14,200	14,100	7.23	2.29	7.10
MO	1,200	1,300	1,400	3.25	3.21	1.79
NY	31,000	31,000	34,000	5.74	5.00	5.29
NC	1,300	1,300	1,400	3.00	3.52	2.29
OH	2,200	2,200	2,300	3.86	1.41	3.30
OR	11,800	12,600	13,800	2.29	2.73	2.80
PA	12,000	12,100	12,100	7.50	6.78	6.94
TX	2,900	2,900	2,900	3.34	2.45	1.69
VA	2,000	2,100	2,400	2.80	2.95	2.33
WA						
All Types	54,000	55,500	56,500	7.69	5.69	6.65
Wine	28,000	29,500	30,500	3.93	4.07	4.16
Juice	26,000	26,000	26,000	11.70	7.54	9.58
US	934,850	934,400	932,150	8.36	6.82	7.53

¹ Yield is based on total production.

**Grapes: Total and Utilized Production, Price, and Value
by Type, State, and United States, 2005-2007**

State and Type	Total Production			Utilized Production		
	2005	2006	2007	2005	2006	2007
	<i>Tons</i>	<i>Tons</i>	<i>Tons</i>	<i>Tons</i>	<i>Tons</i>	<i>Tons</i>
AZ	1,000	900	1,100	1,000	900	1,100
AR	1,900	2,300	500	1,900	2,200	500
CA						
All Types	6,963,000	5,726,000	6,211,000	6,963,000	5,726,000	6,211,000
Wine	3,806,000	3,176,000	3,287,000	3,806,000	3,176,000	3,287,000
Table ¹	872,000	717,000	791,000	872,000	717,000	791,000
Raisin ¹	2,285,000	1,833,000	2,133,000	2,285,000	1,833,000	2,133,000
GA	3,500	2,900	2,900	3,500	2,900	2,900
MI	102,700	32,500	100,100	102,700	27,500	100,100
MO	3,900	4,170	2,500	3,900	4,170	2,500
NY	178,000	155,000	180,000	178,000	153,000	180,000
NC	3,900	4,580	3,200	3,900	4,480	3,200
OH	8,500	3,100	7,600	8,500	3,100	7,600
OR	27,000	34,400	38,600	25,000	34,400	38,600
PA	90,000	82,000	84,000	90,000	82,000	84,000
TX	9,700	7,100	4,900	8,500	3,200	4,100
VA	5,600	6,200	5,600	5,600	6,000	5,400
WA						
All Types	415,000	316,000	376,000	415,000	316,000	376,000
Wine	110,000	120,000	127,000	110,000	120,000	127,000
Juice	305,000	196,000	249,000	305,000	196,000	249,000
US	7,813,700	6,377,150	7,018,000	7,810,500	6,365,850	7,017,000
	Price per Ton			Value of Utilized Production		
	2005	2006	2007	2005	2006	2007
	<i>Dollars</i>	<i>Dollars</i>	<i>Dollars</i>	<i>1,000 Dollars</i>	<i>1,000 Dollars</i>	<i>1,000 Dollars</i>
AZ ²	538.00	832.00		538	749	
AR ²	539.00	621.00		1,024	1,366	
CA						
All Types	459.00	524.00	496.00	3,197,820	2,999,958	3,077,769
Wine	582.00	582.00	564.00	2,215,248	1,848,288	1,854,555
Table ¹	442.00	898.00	787.00	385,116	643,777	622,774
Raisin ¹	261.00	277.00	282.00	597,456	507,893	600,440
GA	1,390.00	1,270.00	1,200.00	4,850	3,690	3,477
MI	210.00	340.00	279.00	21,518	9,357	27,950
MO	774.00	698.00	932.00	3,017	2,912	2,331
NY	216.00	264.00	273.00	38,535	40,394	49,222
NC	937.00	1,030.00	1,260.00	3,653	4,624	4,040
OH	311.00	625.00	393.00	2,643	1,936	2,985
OR	1,680.00	1,750.00	1,880.00	42,000	60,200	72,568
PA	214.00	251.00	249.00	19,221	20,607	20,913
TX	1,250.00	1,200.00	1,160.00	10,625	3,855	4,751
VA	1,360.00	1,440.00	1,400.00	7,616	8,640	7,560
WA						
All Types	340.00	460.00	458.00	141,035	145,380	172,203
Wine	930.00	942.00	954.00	102,300	113,040	121,158
Juice ³	127.00	165.00		38,735	32,340	
Other States			791.00			1,265
US	447.00	519.00	491.00	3,494,095	3,303,668	3,447,034

¹ Fresh equivalent of dried and not dried.

² Missing estimates included in Other States to avoid disclosure of individual operations.

³ Official estimates of price and value for 2007 are not published.

**Grapes: Fresh and Processed Utilization, and Price
by Type, State and United States, 2005-2007**

Utilization, State, and Type	Fresh and Processed Utilization					
	Quantity			Price per Ton		
	2005	2006	2007	2005	2006	2007
	<i>Tons</i>	<i>Tons</i>	<i>Tons</i>	<i>Dollars</i>	<i>Dollars</i>	<i>Dollars</i>
Fresh						
CA						
All Types ¹	988,000	792,000	913,000	567.00	986.00	870.00
Wine	50,000	40,000	40,000	510.00	500.00	500.00
Table	725,000	601,000	700,000	500.00	1,040.00	868.00
Raisin ¹	213,000	151,000	173,000	808.00	902.00	962.00
MI	700	100	1,100	800.00	1,600.00	2,500.00
MO	60	70	60	740.00	600.00	1,040.00
NY	3,000	3,000	4,000	680.00	720.00	900.00
NC	200	180	200	1,800.00	1,800.00	2,200.00
OH	100	100	100	820.00	760.00	1,260.00
PA	500	300	500	670.00	700.00	850.00
TX ²		100	300		1,350.00	1,270.00
Oth Sts	3,050	1,720	1,070	1,350.00	1,300.00	1,300.00
US ¹	995,610	797,570	920,330	570.00	986.00	873.00
Processed						
CA						
All Types	5,975,000	4,934,000	5,298,000	441.00	450.00	431.00
Wine	3,756,000	3,136,000	3,247,000	583.00	583.00	565.00
Table	147,000	116,000	91,000	154.00	162.00	167.00
Raisin	2,072,000	1,682,000	1,960,000	205.00	221.00	221.00
MI	102,000	27,400	99,000	205.00	336.00	255.00
MO	3,840	4,100	2,440	774.00	700.00	930.00
NY	175,000	150,000	176,000	209.00	255.00	259.00
NC	3,700	4,300	3,000	890.00	1,000.00	1,200.00
OH	8,400	3,000	7,500	305.00	620.00	381.00
OR ³	25,000	34,400	38,600	1,680.00	1,750.00	1,880.00
PA	89,500	81,700	83,500	211.00	250.00	245.00
TX ⁴	8,500	3,100	3,800	1,250.00	1,200.00	1,150.00
VA	5,600	6,000	5,400	1,360.00	1,440.00	1,400.00
WA						
All Types	415,000	316,000	376,000	340.00	460.00	458.00
Wine	110,000	120,000	127,000	930.00	942.00	954.00
Juice ⁵	305,000	196,000	249,000	127.00	165.00	
Oth Sts	3,350	4,280	3,430	685.00	835.00	978.00
US	6,814,890	5,568,280	6,096,670	429.00	452.00	434.00

¹ Grapes canned are included in fresh in 2005 to avoid disclosure of individual operations.

² Quantities sold fresh are included in processed in 2005.

³ Includes small quantities sold fresh.

⁴ Includes small quantities sold fresh in 2005.

⁵ Official estimate of price for 2007 is not published.

**Grapes: Fresh and Processed Value by Type,
State and United States, 2005-2007**

Utilization, State, and Type	Fresh and Processed Utilization		
	Value of Utilized Production		
	2005	2006	2007
	<i>1,000 Dollars</i>	<i>1,000 Dollars</i>	<i>1,000 Dollars</i>
Fresh			
CA			
All Types ¹	560,104	781,242	794,026
Wine	25,500	20,000	20,000
Table	362,500	625,040	607,600
Raisin ¹	172,104	136,202	166,426
MI	560	160	2,750
MO	44	42	62
NY	2,040	2,160	3,600
NC	360	324	440
OH	82	76	126
PA	335	210	425
TX ²		135	381
Oth Sts	4,118	2,233	1,386
US ¹	567,643	786,582	803,196
Processed			
CA			
All Types	2,637,716	2,218,716	2,283,743
Wine	2,189,748	1,828,288	1,834,555
Table	22,616	18,737	15,174
Raisin	425,352	371,691	434,014
MI	20,958	9,197	25,200
MO	2,973	2,870	2,269
NY	36,495	38,234	45,622
NC	3,293	4,300	3,600
OH	2,561	1,860	2,859
OR ³	42,000	60,200	72,568
PA	18,886	20,397	20,488
TX ⁴	10,625	3,720	4,370
VA	7,616	8,640	7,560
WA			
All Types	141,035	145,380	172,203
Wine	102,300	113,040	121,158
Juice ⁵	38,735	32,340	
Oth Sts	2,294	3,572	3,356
US	2,926,452	2,517,086	2,643,838

¹ Grapes canned are included in fresh in 2005 to avoid disclosure of individual operations.

² Quantities sold fresh are included in processed in 2005.

³ Includes small quantities sold fresh.

⁴ Includes small quantities sold fresh in 2005.

⁵ Official estimate of value for 2007 is not published.

**Grapes: Processed Utilization, Use, and Price
by Type, State and United States, 2005-2007**

Use and State	Processed Utilization					
	Quantity			Price per Ton		
	2005	2006	2007	2005	2006	2007
	<i>Tons</i>	<i>Tons</i>	<i>Tons</i>	<i>Dollars</i>	<i>Dollars</i>	<i>Dollars</i>
Canned ¹						
CA						
Raisin		21,000	21,000		303.00	314.00
Juice ^{2 3 4}						
MI	97,400	23,100	93,600	167.00	212.00	
NY	135,000	112,000	135,000	169.00	225.00	
OH	7,000	1,600	5,800	174.00	279.00	
PA	74,400	65,500	69,000	168.00	210.00	
WA	305,000	196,000	249,000	127.00	165.00	
Oth Sts ⁵	310		1,000	500.00		
US	619,110	398,200	553,400	148.00	192.00	
Wine						
CA						
All Types	4,330,000	3,489,000	3,674,000	526.00	539.00	517.00
Wine	3,756,000	3,136,000	3,247,000	583.00	583.00	565.00
Table	106,000	86,000	63,000	121.00	137.00	138.00
Raisin	468,000	267,000	364,000	164.00	154.00	155.00
MI	4,600	4,300	5,400	1,020.00	1,000.00	940.00
MO	3,830	4,100	2,440	775.00	700.00	930.00
NY	40,000	38,000	41,000	342.00	343.00	362.00
NC	3,700	4,300	3,000	890.00	1,000.00	1,200.00
OH	1,400	1,400	1,700	959.00	1,010.00	880.00
OR ³	25,000	34,400	38,600	1,680.00	1,750.00	1,880.00
PA	15,100	16,200	14,500	423.00	410.00	485.00
TX ⁶	8,500	3,100	3,800	1,250.00	1,200.00	1,150.00
VA	5,600	6,000	5,400	1,360.00	1,440.00	1,400.00
WA	110,000	120,000	127,000	930.00	942.00	954.00
Oth Sts ⁵	3,050	4,280	2,430	703.00	835.00	1,070.00
US	4,550,780	3,725,080	3,919,270	544.00	564.00	547.00
Dried (Fr Basis)						
CA						
All Types	1,645,000	1,424,000	1,603,000	218.00	233.00	236.00
Table	41,000	30,000	28,000	239.00	232.00	231.00
Raisin	1,604,000	1,394,000	1,575,000	217.00	233.00	236.00

¹ Grapes canned are included with fresh in 2005 to avoid disclosure of individual operations.

² Includes small quantities of other processed (jam, jelly, etc.).

³ Includes small quantities for other uses.

⁴ Official estimates of prices for 2007 are not published.

⁵ Grapes processed for juice in 2006 are included in Other States wine to avoid disclosure of individual operations.

⁶ Includes small quantities for other uses in 2005.

**Concord Grapes: Processed Utilization by State
and United States, 2005-2007**

State	Processed Utilization		
	2005	2006	2007
	<i>Tons</i>	<i>Tons</i>	<i>Tons</i>
MI	66,500	15,350	61,000
NY	137,000	108,600	131,000
OH	6,800	1,600	5,800
PA	77,500	71,400	71,500
WA	275,000	175,000	226,000
Oth Sts	460	920	172
US	563,260	372,870	495,472

**Niagara Grapes: Processed Utilization by State
and United States, 2005-2007**

State	Processed Utilization		
	2005	2006	2007
	<i>Tons</i>	<i>Tons</i>	<i>Tons</i>
MI	31,000	8,100	33,500
NY	18,000	18,500	21,000
OH	550	200	500
PA	6,000	5,000	5,600
WA	30,000	21,000	23,000
US	85,550	52,800	83,600

**Peaches: Bearing Acreage and Yield by Type,
State, and United States, 2005-2007**

State	Bearing Acreage			Yield per Acre ¹		
	2005	2006	2007	2005	2006	2007
	<i>Acres</i>	<i>Acres</i>	<i>Acres</i>	<i>Tons</i>	<i>Tons</i>	<i>Tons</i>
AL	2,800	2,700	2,500	4.29	3.33	1.20
AR	1,500	1,400	1,500	3.30	3.00	0.01
CA						
Freestone	36,000	36,000	36,000	10.70	9.81	12.40
CO	2,100	2,300	2,300	5.71	6.09	5.65
CT	400	400	400	1.75	2.25	2.75
GA	11,500	11,500	12,000	3.48	3.57	1.08
ID	1,000	1,050	1,000	8.00	8.57	7.00
IL	1,600	1,600	1,600	7.00	7.11	0.06
KY	280	270	240	2.68	4.07	0.04
LA	270	260	250	2.41	2.12	2.40
MD	1,000	900	850	4.20	4.06	3.88
MA	380	380	400	2.63	3.68	4.13
MI	5,000	4,500	4,200	2.80	4.20	4.88
MO	1,500	1,500	1,700	3.87	4.26	0.01
NJ	7,400	7,200	7,100	4.73	4.72	4.51
NY	1,700	1,700	1,700	2.50	4.12	3.71
NC	1,200	1,200	1,200	5.00	4.69	0.54
OH	1,300	1,400	1,300	1.62	2.31	3.15
OK	900	900	900	2.22	2.00	1.11
OR	600	600	600	4.67	3.50	5.00
PA	4,500	4,300	4,300	5.91	5.02	4.51
SC	14,000	14,000	14,000	5.36	4.29	0.89
TN ²	500	500	500	4.00	3.80	
TX	6,000	5,800	5,600	1.46	0.27	1.55
UT	1,100	1,100	1,100	4.27	5.09	4.09
VA	850	800	800	5.53	5.00	2.00
WA	2,700	2,650	2,650	7.74	8.68	6.98
WV	950	950	950	5.79	5.47	4.42
Total Above	109,030	107,860	107,640	6.43	6.04	5.81
CA						
Clingstone	30,400	27,000	26,500	15.90	13.30	19.00
US	139,430	134,860	134,140	8.50	7.49	8.41

¹ Yield is based on total production.

² No significant commercial production in 2007 due to freeze damage.

**Peaches: Bearing Acreage and Yield by Type,
California, 2005-2007**

Type	Bearing Acreage			Yield per Acre ¹		
	2005	2006	2007	2005	2006	2007
	<i>Acres</i>	<i>Acres</i>	<i>Acres</i>	<i>Tons</i>	<i>Tons</i>	<i>Tons</i>
Freestone	36,000	36,000	36,000	10.70	9.81	12.40
Clingstone	30,400	27,000	26,500	15.90	13.30	19.00
Total	66,400	63,000	62,500	13.10	11.30	15.20

¹ Yield is based on total production.

**Peaches: Total and Utilized Production, by Type,
State, and United States, 2005-2007**

State	Total Production			Utilized Production		
	2005	2006	2007	2005	2006	2007
	<i>Tons</i>	<i>Tons</i>	<i>Tons</i>	<i>Tons</i>	<i>Tons</i>	<i>Tons</i>
AL	12,000	9,000	3,000	10,000	5,000	2,500
AR	4,950	4,200	15	4,650	3,850	10
CA						
Freestone	385,000	353,000	446,000	385,000	353,000	446,000
CO	12,000	14,000	13,000	11,000	13,000	11,000
CT	700	900	1,100	700	900	1,100
GA	40,000	41,000	13,000	37,000	37,000	12,000
ID	8,000	9,000	7,000	8,000	9,000	6,860
IL	11,200	11,370	100	11,000	10,740	90
KY	750	1,100	10	650	1,000	10
LA	650	550	600	650	550	600
MD	4,200	3,650	3,300	4,200	3,630	3,200
MA	1,000	1,400	1,650	990	1,400	1,600
MI	14,000	18,900	20,500	14,000	18,700	19,100
MO	5,800	6,390	15	5,800	6,390	15
NJ	35,000	34,000	32,000	33,700	34,000	28,800
NY	4,250	7,000	6,300	4,100	6,730	6,300
NC	6,000	5,630	650	6,000	5,290	650
OH	2,100	3,240	4,100	2,100	3,000	4,000
OK	2,000	1,800	1,000	1,860	1,700	900
OR	2,800	2,100	3,000	2,700	2,000	2,700
PA	26,600	21,600	19,400	26,600	21,300	19,400
SC	75,000	60,000	12,500	45,000	50,000	12,000
TN ¹	2,000	1,900		1,800	1,800	
TX	8,750	1,590	8,700	8,350	750	6,900
UT	4,700	5,600	4,500	4,420	5,400	4,400
VA	4,700	4,000	1,600	4,630	3,950	1,550
WA	20,900	23,000	18,500	20,900	23,000	18,500
WV	5,500	5,200	4,200	5,300	5,000	4,000
Total Above	700,550	651,120	625,740	661,100	628,080	614,185
CA						
Clingstone	484,000	359,000	503,000	484,000	359,000	503,000
US	1,184,550	1,010,120	1,128,740	1,145,100	987,080	1,117,185

¹ No significant commercial production in 2007 due to freeze damage.

**Peaches: Total and Utilized Production, by Type,
California, 2005-2007**

Type	Total Production			Utilized Production		
	2005	2006	2007	2005	2006	2007
	<i>Tons</i>	<i>Tons</i>	<i>Tons</i>	<i>Tons</i>	<i>Tons</i>	<i>Tons</i>
Freestone	385,000	353,000	446,000	385,000	353,000	446,000
Clingstone	484,000	359,000	503,000	484,000	359,000	503,000
Total	869,000	712,000	949,000	869,000	712,000	949,000

**Peaches: Price and Value by Type, State,
and United States, 2005-2007**

State	Price per Ton			Value of Utilized Production		
	2005	2006	2007	2005	2006	2007
	<i>Dollars</i>	<i>Dollars</i>	<i>Dollars</i>	<i>1,000 Dollars</i>	<i>1,000 Dollars</i>	<i>1,000 Dollars</i>
AL	808.00	1,030.00	1,050.00	8,080	5,142	2,625
AR	1,100.00	1,030.00	1,300.00	5,130	3,970	13
CA						
Freestone	408.00	469.00	402.00	157,048	165,562	179,175
CO	1,080.00	1,310.00	1,550.00	11,880	17,030	17,080
CT	1,600.00	1,800.00	1,800.00	1,120	1,620	1,980
GA	743.00	892.00	819.00	27,476	33,020	9,830
ID	967.00	655.00	1,150.00	7,735	5,899	7,879
IL	1,250.00	1,200.00	1,200.00	13,780	12,896	108
KY	1,000.00	1,260.00	2,100.00	650	1,260	21
LA	1,730.00	1,730.00	1,900.00	1,125	952	1,140
MD	919.00	1,030.00	1,170.00	3,860	3,739	3,744
MA	1,500.00	1,940.00	1,800.00	1,485	2,716	2,880
MI	570.00	699.00	853.00	7,982	13,066	16,298
MO	980.00	880.00	1,730.00	5,684	5,623	26
NJ	916.00	1,050.00	1,140.00	30,869	35,700	32,832
NY	690.00	667.00	634.00	2,828	4,489	3,995
NC	850.00	967.00	1,130.00	5,100	5,115	735
OH	1,220.00	1,220.00	1,510.00	2,562	3,660	6,040
OK	1,010.00	1,100.00	1,590.00	1,879	1,870	1,431
OR	966.00	1,180.00	970.00	2,608	2,350	2,618
PA	715.00	913.00	903.00	19,011	19,454	17,524
SC	703.00	749.00	1,130.00	31,641	37,474	13,616
TN ¹	1,280.00	1,410.00		2,304	2,538	
TX	1,680.00	1,640.00	1,950.00	14,047	1,230	13,455
UT	775.00	672.00	667.00	3,424	3,627	2,934
VA	800.00	790.00	1,040.00	3,704	3,121	1,618
WA	561.00	522.00	480.00	11,732	12,008	8,873
WV	724.00	578.00	858.00	3,837	2,890	3,431
Total Above	588.00	650.00	573.00	388,581	408,021	351,901
CA						
Clingstone	254.00	292.00	304.00	122,939	104,846	152,665
US	447.00	520.00	452.00	511,520	512,867	504,566

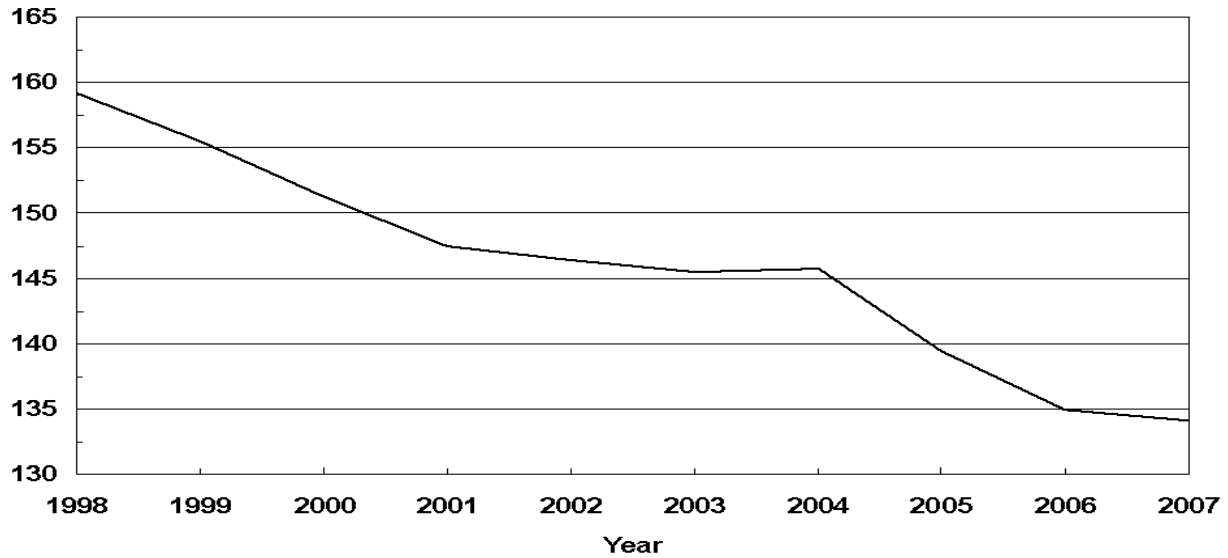
¹ No significant commercial production in 2007 due to freeze damage.

**Peaches: Price and Value by Type,
California, 2005-2007**

Type	Price per Ton			Value of Utilized Production		
	2005	2006	2007	2005	2006	2007
	<i>Dollars</i>	<i>Dollars</i>	<i>Dollars</i>	<i>1,000 Dollars</i>	<i>1,000 Dollars</i>	<i>1,000 Dollars</i>
Freestone	408.00	469.00	402.00	157,048	165,562	179,175
Clingstone	254.00	292.00	304.00	122,939	104,846	152,665
Total	322.00	380.00	350.00	279,987	270,408	331,840

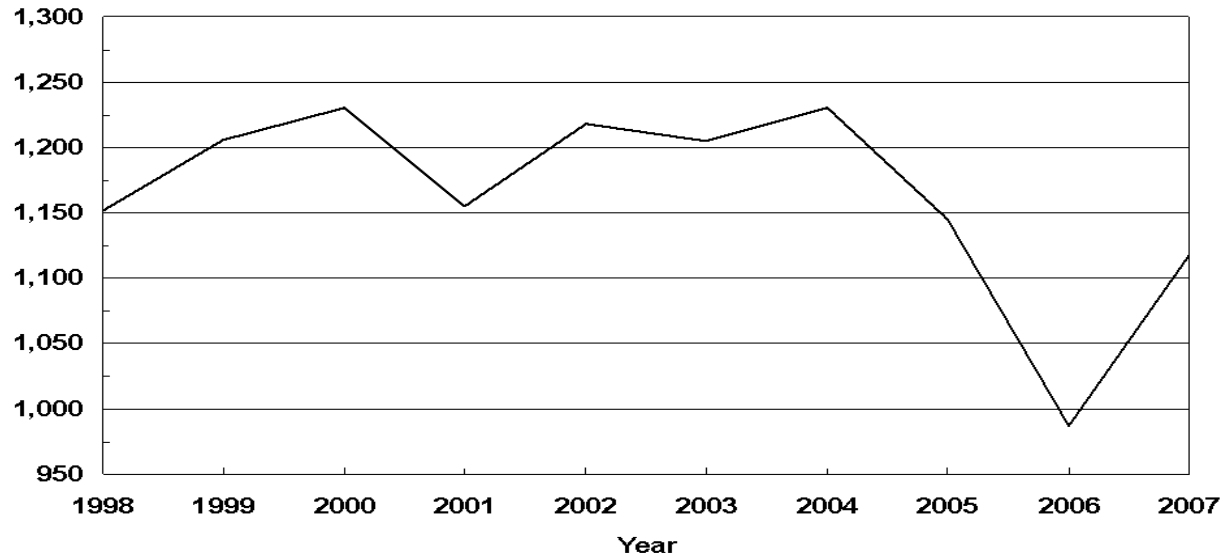
U.S. Peaches Bearing Acres 1998-2007

(000) Acres



U.S. Peaches Utilized Production 1998-2007

(000) Tons



**Peaches: Fresh and Processed Utilization, and Price
by Type, State, and United States, 2005-2007**

Use and State	Fresh and Processed Utilization					
	Quantity			Price per Unit		
	2005	2006	2007	2005	2006	2007
	<i>Tons</i>	<i>Tons</i>	<i>Tons</i>	<i>Dollars per Ton</i>	<i>Dollars per Ton</i>	<i>Dollars per Ton</i>
Fresh						
AL	10,000	4,900	2,500	808.00	977.00	1,050.00
CA						
Freestone	252,000	242,000	297,000	540.00	597.00	498.00
CT	700	900	1,100	1,600.00	1,800.00	1,800.00
GA ¹			11,500			840.00
IL	10,800	10,700	90	1,250.00	1,200.00	1,200.00
KY	650	1,000	10	1,000.00	1,260.00	2,100.00
LA	650	550	600	1,730.00	1,730.00	1,900.00
MD	4,000	3,630	3,200	950.00	1,030.00	1,170.00
MA	990	1,400	1,600	1,500.00	1,940.00	1,800.00
MI ²	7,000	11,350		780.00	860.00	
MO	5,800	6,390	15	980.00	880.00	1,730.00
NY	1,950	3,050	3,000	900.00	784.00	754.00
OH	2,100	3,000	4,000	1,220.00	1,220.00	1,510.00
OK	1,860	1,700	900	1,010.00	1,100.00	1,590.00
SC	42,000	39,000	11,000	733.00	866.00	1,200.00
TN ³	1,800	1,800		1,280.00	1,410.00	
TX	8,230	750	6,900	1,690.00	1,640.00	1,950.00
VA	4,630	3,950	1,550	800.00	790.00	1,040.00
WV	5,300	5,000	4,000	724.00	578.00	858.00
Oth Sts	141,590	140,380	93,510	867.00	966.00	1,090.00
US	502,050	481,450	442,475	718.00	779.00	709.00
	<i>Tons</i>	<i>Tons</i>	<i>Tons</i>	<i>Dollars per Ton</i>	<i>Dollars per Ton</i>	<i>Dollars per Ton</i>
Processed						
CA						
Clingstone	484,000	359,000	503,000	254.00	292.00	304.00
Freestone ⁴	133,000	111,000	149,000	158.00	190.00	210.00
GA ¹			500			340.00
MI ²	7,000	7,350		360.00	450.00	
NY	2,150	3,680	3,300	499.00	570.00	525.00
SC	3,000	11,000	1,000	285.00	336.00	416.00
Oth Sts	13,900	13,600	17,910	189.00	215.00	250.00
US ⁵	643,050	505,630	674,710	235.00	273.00	283.00

¹ State level estimates published individually beginning in 2007.

² Missing data included in Other States to avoid disclosure of individual operations.

³ No significant commercial production in 2007 due to freeze damage.

⁴ CA Freestone quantity and value include dried, price excludes dried.

⁵ US quantity, price, and value include dried.

**Peaches: Fresh and Processed Value by State
and United States, 2005-2007**

Use and State	Fresh and Processed Utilization		
	Value of Utilized Production		
	2005	2006	2007
	<i>1,000 Dollars</i>	<i>1,000 Dollars</i>	<i>1,000 Dollars</i>
Fresh			
AL	8,080	4,787	2,625
CA			
Freestone	136,080	144,474	147,906
CT	1,120	1,620	1,980
GA ¹			9,660
IL	13,500	12,840	108
KY	650	1,260	21
LA	1,125	952	1,140
MD	3,800	3,739	3,744
MA	1,485	2,716	2,880
MI ²	5,460	9,761	
MO	5,684	5,623	26
NY	1,755	2,391	2,262
OH	2,562	3,660	6,040
OK	1,879	1,870	1,431
SC	30,786	33,774	13,200
TN ³	2,304	2,538	
TX	13,909	1,230	13,455
VA	3,704	3,121	1,618
WV	3,837	2,890	3,431
Oth Sts	122,817	135,661	102,317
US	360,537	374,907	313,844
Processed			
CA			
Clingstone	122,939	104,846	152,665
Freestone ⁴	20,968	21,088	31,269
GA ¹			170
MI ²	2,522	3,305	
NY	1,073	2,098	1,733
SC	855	3,700	416
Oth Sts	2,626	2,923	4,469
US ⁵	150,983	137,960	190,722

¹ State level estimates published individually beginning in 2007.

² Missing data included in Other States to avoid disclosure of individual operations.

³ No significant commercial production in 2007 due to freeze damage.

⁴ CA Freestone quantity and value include dried, price excludes dried.

⁵ US quantity, price, and value include dried.

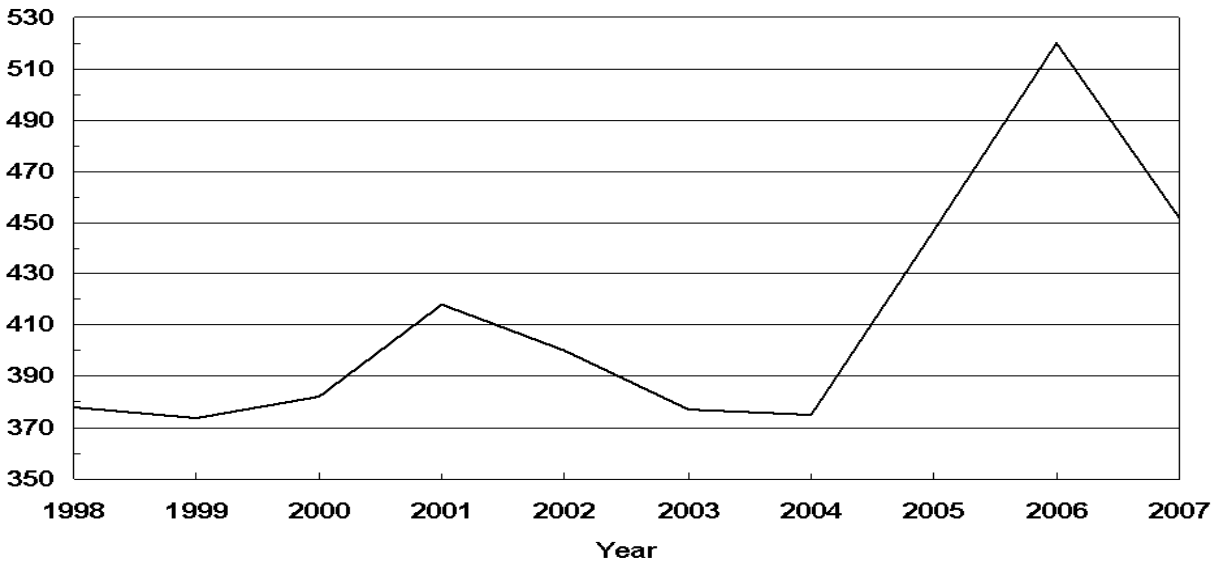
**Peaches: Processed Utilization, and Price by Use,
State, and United States, 2005-2007**

Use and State	Processed Utilization					
	Quantity			Price per Ton		
	2005	2006	2007	2005	2006	2007
	<i>Tons</i>	<i>Tons</i>	<i>Tons</i>	<i>Dollars</i>	<i>Dollars</i>	<i>Dollars</i>
Canned						
CA						
Clingstone	459,000	344,000	466,000	256.00	295.00	308.00
NY						
Freestone	1,900			512.00		
Oth Sts	18,760	30,090	18,820	276.00	365.00	352.00
US	479,660	374,090	484,820	258.00	301.00	310.00
Frozen						
CA						
Freestone	82,800	84,100	107,900	202.00	209.00	249.00
NY						
Freestone	250			400.00		
Oth Sts	18,200	12,130	27,500	334.00	403.00	322.00
US	101,250	96,230	135,400	226.00	234.00	264.00
Dried						
CA						
Freestone	12,700	13,100	12,700	46.00	79.00	57.00
US	12,700	13,100	12,700	46.00	79.00	57.00
Other ¹						
US	49,440	22,210	41,790	78.00	90.00	98.00

¹ Pickled, wine, brandy, juice, and baby food.

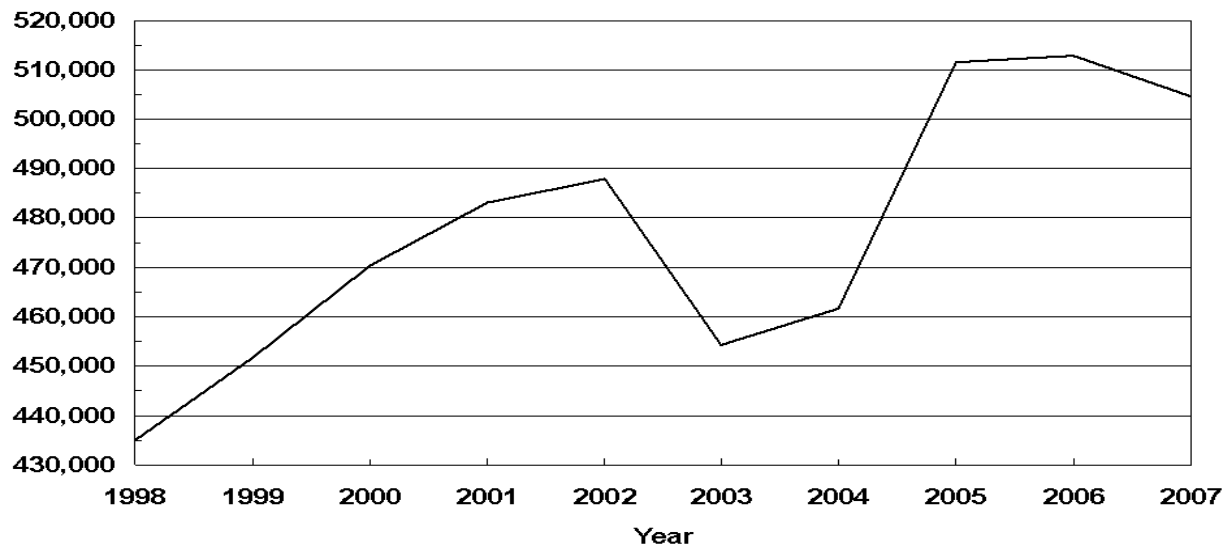
U.S. Peaches Prices Received 1998-2007

Dollars Per Ton



U.S. Peaches Value of Utilized Production 1998-2007

(000) Dollars



**All Pears: Bearing Acreage, Yield, Production, and Utilization
by State and United States, 2005-2007 ¹**

State and Year	Bearing Acreage	Yield Per Acre ²	Production		Utilization	
			Total	Utilized	Fresh	Processed
	<i>Acres</i>	<i>Tons</i>	<i>Tons</i>	<i>Tons</i>	<i>Tons</i>	<i>Tons</i>
CA						
2005	16,000	12.60	202,000	202,000		
2006	16,000	14.90	239,000	229,000		
2007	16,000	15.20	243,000	243,000		
CO						
2005			2,500	2,200		
2006			2,300	2,000		
2007			1,700	1,700		
CT						
2005			1,000	1,000		
2006			1,000	1,000		
2007			1,000	1,000		
MI						
2005	800	2.50	2,000	1,970		
2006	800	4.50	3,600	3,500		
2007	750	5.33	4,000	3,600		
NY						
2005	1,400	6.07	8,500	8,200		
2006	1,400	11.40	16,000	15,600		
2007	1,200	9.17	11,000	10,300		
OR						
2005	16,200	11.90	192,000	191,000		
2006	16,200	13.30	215,000	215,000		
2007	16,200	12.70	206,000	206,000		
PA						
2005	800	2.63	2,100	2,100		
2006	800	4.88	3,900	3,800		
2007	800	5.00	4,000	4,000		
UT						
2005	60	3.67	220	200		
2006	60	3.92	235	220		
2007	60	4.17	250	250		
WA						
2005	24,700	16.70	413,000	413,000		
2006	24,000	15.00	361,000	361,000		
2007	24,000	16.80	402,000	402,000		
US ³						
2005	60,480	13.60	823,320	821,670	504,400	317,270
2006	59,780	14.10	842,035	831,120	500,720	330,400
2007	59,530	14.70	872,950	871,850	551,960	319,890

¹ Missing data not published to avoid disclosure of individual operations.

² Yield is based on total production.

³ Processed mostly canned, but includes small quantities dried and other uses not published separately to avoid disclosure of individual operations.

**All Pears: Price and Value by State
and United States, 2005-2007 ¹**

State and Year	Price per Ton			Value of Production		
	Fresh	Processed Exc. Dried	All	Fresh	Processed Inc. Dried	All
	<i>Dollars</i>	<i>Dollars</i>	<i>Dollars</i>	<i>1,000 Dollars</i>	<i>1,000 Dollars</i>	<i>1,000 Dollars</i>
CA						
2005			395.00			79,790
2006			298.00			68,269
2007			340.00			82,691
CO						
2005			455.00			1,002
2006			543.00			1,085
2007			976.00			1,660
CT						
2005			952.00			952
2006			1,100.00			1,100
2007			1,300.00			1,300
MI						
2005			423.00			834
2006			320.00			1,120
2007			450.00			1,621
NY						
2005			499.00			4,088
2006			429.00			6,685
2007			497.00			5,120
OR						
2005			334.00			63,808
2006			417.00			89,592
2007			434.00			89,417
PA						
2005			597.00			1,254
2006			712.00			2,706
2007			717.00			2,869
UT						
2005			645.00			129
2006			636.00			140
2007			760.00			190
WA						
2005			344.00			142,006
2006			441.00			159,231
2007			443.00			178,224
US ²						
2005	461.00	193.00	358.00	232,291	61,572	293,863
2006	528.00	199.00	397.00	264,222	65,706	329,928
2007	534.00	214.00	416.00	294,645	68,447	363,092

¹ Missing data not published to avoid disclosure of individual operations.

² Processed mostly canned, but includes small quantities dried and other uses not published separately to avoid disclosure of individual operations.

**Pears: Bearing Acreage, Yield, Production, and Utilization
by Type, State, and United States, 2005-2007 ¹**

Type, State and Year	Bearing Acreage	Yield Per Acre ²	Production		Utilization	
			Total	Utilized	Fresh	Processed
	<i>Acres</i>	<i>Tons</i>	<i>Tons</i>	<i>Tons</i>	<i>Tons</i>	<i>Tons</i>
Bartlett ³						
CA						
2005	12,000	13.80	166,000	166,000	47,000	119,000
2006	12,000	16.60	199,000	189,000	59,000	130,000
2007	12,000	16.80	201,000	201,000	64,000	137,000
OR						
2005	4,200	13.80	58,000	57,000	28,000	29,000
2006	4,200	15.00	63,000	63,000	30,000	33,000
2007	4,200	14.00	59,000	59,000	31,000	28,000
WA						
2005	11,200	14.90	167,000	167,000	59,000	108,000
2006	11,000	15.00	165,000	165,000	54,000	111,000
2007	11,000	14.80	163,000	163,000	66,000	97,000
Total						
2005	27,400	14.30	391,000	390,000	134,000	256,000
2006	27,200	15.70	427,000	417,000	143,000	274,000
2007	27,200	15.60	423,000	423,000	161,000	262,000
Other ⁴						
CA						
2005	4,000	9.00	36,000	36,000		
2006	4,000	10.00	40,000	40,000		
2007	4,000	10.50	42,000	42,000		
OR						
2005	12,000	11.20	134,000	134,000		
2006	12,000	12.70	152,000	152,000		
2007	12,000	12.30	147,000	147,000		
WA						
2005	13,500	18.20	246,000	246,000		
2006	13,000	15.10	196,000	196,000		
2007	13,000	18.40	239,000	239,000		
Total						
2005	29,500	14.10	416,000	416,000	359,000	57,000
2006	29,000	13.40	388,000	388,000	338,000	50,000
2007	29,000	14.80	428,000	428,000	375,500	52,500

¹ Missing data not published to avoid disclosure of individual operations.

² Yield is based on total production.

³ Processed mostly canned, but includes small quantities dried and other uses not published separately to avoid disclosure of individual operations.

⁴ Processed mostly juice, but includes small quantities canned and other uses not published separately to avoid disclosure of individual operations.

**Pears: Price and Value by Type, State,
and United States, 2005-2007 ¹**

Type, State and Year	Price per Ton			Value of Production		
	Fresh	Processed Exc. Dried	All	Fresh	Processed Inc. Dried	All
	<i>Dollars</i>	<i>Dollars</i>	<i>Dollars</i>	<i>1,000 Dollars</i>	<i>1,000 Dollars</i>	<i>1,000 Dollars</i>
Bartlett ²						
CA						
2005	424.00	247.00	297.00	19,928	29,406	49,334
2006	210.00	249.00	237.00	12,390	32,319	44,709
2007	367.00	253.00	289.00	23,488	34,610	58,098
OR						
2005	485.00	213.00	347.00	13,580	6,176	19,756
2006	552.00	229.00	383.00	16,560	7,571	24,131
2007	517.00	219.00	375.00	16,027	6,120	22,147
WA						
2005	580.00	212.00	342.00	34,220	22,852	57,072
2006	642.00	202.00	346.00	34,668	22,454	57,122
2007	573.00	239.00	374.00	37,818	23,172	60,990
Total						
2005	505.00	228.00	323.00	67,728	58,434	126,162
2006	445.00	227.00	302.00	63,618	62,344	125,962
2007	480.00	244.00	334.00	77,333	63,902	141,235
Other ³						
CA						
2005			846.00			30,456
2006			589.00			23,560
2007			586.00			24,593
OR						
2005			329.00			44,052
2006			431.00			65,461
2007			458.00			67,270
WA						
2005			345.00			84,934
2006			521.00			102,109
2007			491.00			117,234
Total						
2005	439.00	33.70	383.00	157,521	1,921	159,442
2006	560.00	36.90	493.00	189,284	1,846	191,130
2007	549.00	55.40	489.00	206,191	2,906	209,097

¹ Missing data not published to avoid disclosure of individual operations.

² Processed mostly canned, but includes small quantities dried and other uses not published separately to avoid disclosure of individual operations.

³ Processed mostly juice, but includes small quantities canned and other uses not published separately to avoid disclosure of individual operations.

**Hawaii Crops: Acreage Harvested, Yield, Utilized
Production, and Utilization, 2005-2007**

Crop and Year	Acreage Harvested	Yield Per Acre	Utilized Production	Utilization	
				Fresh	Processed
	<i>Acres</i>	<i>1,000 Pounds</i>	<i>1,000 Pounds</i>	<i>1,000 Pounds</i>	<i>1,000 Pounds</i>
Bananas					
2005	980	21.3	20,900	20,900	
2006	1,000	20.0	20,000	20,000	
2007	1,000	19.7	19,700	19,700	
Guavas					
2005	620	13.1	8,100		8,100
2006	365	20.3	7,400		7,400
2007	150	25.3	3,800		3,800
Papayas					
2005	1,480	22.2	32,900	30,700	2,200
2006	1,530	18.8	28,700	26,600	2,100
2007	1,310	25.5	33,400	31,200	2,200
	<i>Acres</i>		<i>Tons</i>	<i>Tons</i>	<i>Tons</i>
Pineapples ¹					
2005	14,000		212,000	106,000	106,000
2006	12,600		185,000	96,000	89,000
2007 ²					

¹ Acreage is total acres in crop, not harvested acreage. Yield is not estimated. Production and processed utilization on a fresh weight basis.

² 2007 data not published to avoid disclosure of individual operations.

Hawaii Crops: Price and Value, 2005-2007

Crop and Year	Price			Value of Production		
	Fresh	Processed	All	Fresh	Processed	Total
	<i>Dollars per Pound</i>	<i>Dollars per Pound</i>	<i>Dollars per Pound</i>	<i>1,000 Dollars</i>	<i>1,000 Dollars</i>	<i>1,000 Dollars</i>
Bananas						
2005	0.439		0.439	9,175		9,175
2006	0.490		0.490	9,800		9,800
2007	0.410		0.410	8,077		8,077
Guavas						
2005		0.139	0.139		1,126	1,126
2006		0.142	0.142		1,051	1,051
2007		0.157	0.157		597	597
Papayas						
2005	0.364	0.030	0.342	11,175	66	11,241
2006	0.413	0.030	0.385	10,986	63	11,049
2007	0.417	0.038	0.392	13,010	84	13,094
	<i>Dollars per Ton</i>	<i>Dollars per Ton</i>	<i>Dollars per Ton</i>			
Pineapples ¹						
2005	600.00	148.00	374.00	63,600	15,688	79,288
2006	630.00	148.00	398.00	60,480	13,172	73,652
2007 ²						

¹ Processed price is for fresh fruit delivered to processing plant door. Fresh price is for fruit at wholesale establishments for local sales and at shippers dock for mainland and foreign sales.

² 2007 data not published to avoid disclosure of individual operations.

**Apples: Unutilized Production by State
and United States, 2005-2007**

Crop	Unharvested Production			Harvested Not Sold		
	2005	2006	2007	2005	2006	2007
	<i>Million Pounds</i>	<i>Million Pounds</i>	<i>Million Pounds</i>	<i>Million Pounds</i>	<i>Million Pounds</i>	<i>Million Pounds</i>
Apples						
AZ	0.2	0.1				
CO	4.0	1.0				
CT	0.5	1.0	1.0			
GA					1.0	
ID		5.0				
IL	9.9	6.8		0.6	0.9	0.1
IN	10.0	6.5	3.0			
IA	0.2	0.9	1.0			
KY	0.7	0.4	0.2	0.1	0.2	
ME	2.0		3.0			1.0
MD	0.1			0.1		
MA	2.5	1.5	2.0			
MI	5.0	25.0				
MN	4.6	4.8	4.9	1.4	1.2	1.0
MO	2.0	1.0			1.0	0.1
NH	1.0	1.0	1.5	0.5		
NJ	1.0	1.0				
NY	10.0	10.0	10.0			
NC	12.0	1.5			1.5	
OH	1.0	1.0				
OR	10.0					
PA	5.0	3.0	3.0			
RI		0.2	0.2	0.2		
SC	0.1	0.5		1.4	0.1	
TN	1.0	1.0				
UT	1.9		1.0	0.4	0.1	
VT	3.0	4.0	5.0	0.5		
VA	3.0	6.0				
WV	3.0	2.0	3.0	1.0		
WI	2.5	5.0	2.0			1.0
US	96.2	90.2	40.8	6.2	6.0	3.2

**Miscellaneous Crops: Unutilized Production
by State and United States, 2005-2007**

Crop and State	Unharvested Production			Harvested Not Sold		
	2005	2006	2007	2005	2006	2007
	<i>Tons</i>	<i>Tons</i>	<i>Tons</i>	<i>Tons</i>	<i>Tons</i>	<i>Tons</i>
Peaches						
AL	1,050	2,000	400	950	2,000	100
AR	150	50		150	300	5
CO	500	500	2,000	500	500	
GA				3,000	4,000	1,000
ID						140
IL	20	400	10	180	230	
KY	100	100				
MD		20	100			
MA	10		50			
MI		200	1,400			
NJ	1,200		3,200	100		
NY	150	200			70	
NC		230			110	
OH		240	50			50
OK	140	100	100			
OR	100	100	300			
PA		100			200	
SC	25,000	9,000	100	5,000	1,000	400
TN	200	100				
TX	290	830	1,630	110	10	170
UT	170	90	60	110	110	40
VA	70		50		50	
WV		100	100	200	100	100
US	29,150	14,360	9,550	10,300	8,680	2,005
	<i>Million Pounds</i>	<i>Million Pounds</i>	<i>Million Pounds</i>	<i>Million Pounds</i>	<i>Million Pounds</i>	<i>Million Pounds</i>
Cherries (Tart)						
MI			3.0		9.7	
UT	2.0	3.0	1.0			
WA					0.6	0.1
WI					0.1	0.4
US	2.0	3.0	4.0		10.4	0.5
	<i>Barrels¹</i>	<i>Barrels¹</i>	<i>Barrels¹</i>	<i>Barrels¹</i>	<i>Barrels¹</i>	<i>Barrels¹</i>
Cranberries						
NJ					5,000	
WI		100,000				
US		100,000			5,000	

¹ A barrel weighs 100 pounds.

**Miscellaneous Crops: Unutilized Production
by State and United States, 2005-2007**

Crop and State	Unharvested Production			Harvested Not Sold		
	2005	2006	2007	2005	2006	2007
	<i>Tons</i>	<i>Tons</i>	<i>Tons</i>	<i>Tons</i>	<i>Tons</i>	<i>Tons</i>
Apricots						
CA	5,000					
UT		15		5	10	
US	5,000	15		5	10	
Cherries (Sweet)						
CA				4,100	1,900	3,200
ID		40			230	
MT		1,700	140	50	120	120
NY	50	90	10	10	10	
OR	2,000	2,000	1,000	1,000	500	
UT	30	40		20	10	
US	2,080	3,870	1,150	5,180	2,770	3,320
Grapes						
AR		100				
MI		5,000				
NY		2,000				
NC		100				
OR	2,000					
TX	1,200	3,900	800			
VA					200	200
US	3,200	11,100	800		200	200
Kiwifruit						
CA				1,000	700	800
Pears						
CA		10,000				
CO	300	300				
MI	30	100	400			
NY	300	400	700			
OR	1,000					
PA		100				
UT	20	15				
US	1,650	10,915	1,100			
Prunes & Plums						
ID	50	50	80		50	
MI		200	1,100			
OR		2,000				
US	50	2,250	1,180		50	
Prunes						
CA ¹		3,000	500	3,000	6,000	1,500

¹ CA prunes are on a dried basis.

**Berries: Unutilized Production by State
and United States, 2005-2007**

Crop and State	Unharvested Production			Harvested Not Sold		
	2005	2006	2007	2005	2006	2007
	<i>1,000 Pounds</i>	<i>1,000 Pounds</i>	<i>1,000 Pounds</i>	<i>1,000 Pounds</i>	<i>1,000 Pounds</i>	<i>1,000 Pounds</i>
Red Raspberries OR		50				
Black Raspberries OR			50			
Cultivated Blueberries						
AL	140	110	30	90	10	
AR	150	50				
FL		40				
IN			200			
NY	100	200	200			
US	390	400	430	90	10	
Boysenberries OR	30	100	500			
Loganberries OR	70	5				
Cultivated Blackberries (OR)						
Marion	400		3,000			
Other	100	200	2,000			
All	500	200	5,000			

**Apples for Fresh Use: Prices Received, by State, July 2005 - June 2008
and United States, July 2003 - June 2008¹**

State	2005						2006					
	Jul	Aug	Sep	Oct	Nov	Dec	Jan	Feb	Mar	Apr	May	Jun
	<i>Dollars per Pound</i>	<i>Dollars per Pound</i>	<i>Dollars per Pound</i>	<i>Dollars per Pound</i>	<i>Dollars per Pound</i>	<i>Dollars per Pound</i>	<i>Dollars per Pound</i>	<i>Dollars per Pound</i>	<i>Dollars per Pound</i>	<i>Dollars per Pound</i>	<i>Dollars per Pound</i>	<i>Dollars per Pound</i>
CA		0.385	0.371	0.391	0.311	0.380	0.476	0.449				
MI		0.220	0.235	0.225	0.210	0.210	0.195	0.195	0.200	0.205	0.205	0.190
NY			0.261	0.283	0.268	0.270	0.269	0.265	0.259	0.256	0.244	0.228
OH		0.330	0.330	0.338	0.324	0.316	0.315	0.304	0.269	0.245		
PA		0.190	0.185	0.185	0.180	0.180	0.180	0.190	0.190	0.200	0.200	
VA			0.205	0.203	0.207	0.206	0.206	0.207	0.206	0.200		
WA	0.098	0.111	0.253	0.249	0.266	0.206	0.207	0.198	0.191	0.183	0.185	0.229
State	2006						2007					
	Jul	Aug	Sep	Oct	Nov	Dec	Jan	Feb	Mar	Apr	May	Jun
	<i>Dollars per Pound</i>	<i>Dollars per Pound</i>	<i>Dollars per Pound</i>	<i>Dollars per Pound</i>	<i>Dollars per Pound</i>	<i>Dollars per Pound</i>	<i>Dollars per Pound</i>	<i>Dollars per Pound</i>	<i>Dollars per Pound</i>	<i>Dollars per Pound</i>	<i>Dollars per Pound</i>	<i>Dollars per Pound</i>
CA		0.473	0.445	0.371	0.392	0.302	0.304	0.328				
MI			0.305	0.285	0.230	0.230	0.225	0.230	0.230	0.230	0.220	0.225
NY			0.344	0.351	0.323	0.291	0.295	0.291	0.282	0.275	0.277	0.274
OH	0.423	0.398	0.400	0.390	0.382	0.387	0.396	0.387	0.406	0.366	0.360	
PA		0.317	0.270	0.258	0.240	0.242	0.237	0.238	0.264	0.277		
VA			0.220	0.200	0.190	0.190	0.270	0.320	0.310	0.310		
WA	0.281	0.334	0.399	0.358	0.361	0.291	0.287	0.287	0.287	0.288	0.301	0.298
State	2007						2008					
	Jul	Aug	Sep	Oct	Nov	Dec	Jan	Feb	Mar	Apr	May	Jun
	<i>Dollars per Pound</i>	<i>Dollars per Pound</i>	<i>Dollars per Pound</i>	<i>Dollars per Pound</i>	<i>Dollars per Pound</i>	<i>Dollars per Pound</i>	<i>Dollars per Pound</i>	<i>Dollars per Pound</i>	<i>Dollars per Pound</i>	<i>Dollars per Pound</i>	<i>Dollars per Pound</i>	<i>Dollars per Pound</i>
CA		0.520	0.422	0.412	0.339							
MI		0.325	0.325	0.315	0.285	0.280	0.275	0.275	0.275	0.260	0.250	
NY			0.358	0.343	0.343	0.336	0.322	0.323	0.332	0.347	0.375	0.383
OH	0.550	0.500	0.465	0.430	0.450	0.440	0.410	0.425	0.370	0.400	0.515	0.560
PA		0.360	0.360	0.330	0.260	0.220	0.263	0.268	0.264			
VA		0.273	0.275	0.304	0.295	0.295	0.294	0.280	0.280			
WA	0.293	0.298	0.421	0.395	0.430	0.362	0.371	0.359	0.352	0.340	0.363	0.410
	Jul	Aug	Sep	Oct	Nov	Dec	Jan ²	Feb	Mar	Apr	May	Jun
	United States											
2003	0.208	0.346	0.270	0.278	0.305	0.288	0.297	0.300	0.304	0.298	0.296	0.296
2004	0.300	0.268	0.236	0.239	0.218	0.224	0.221	0.222	0.216	0.211	0.204	0.239
2005	0.098	0.165	0.260	0.257	0.261	0.217	0.217	0.206	0.198	0.193	0.189	0.228
2006	0.282	0.352	0.382	0.347	0.348	0.287	0.286	0.285	0.284	0.284	0.295	0.292
2007	0.306	0.344	0.402	0.379	0.403	0.350	0.355	0.348	0.344	0.338	0.362	0.409

¹ Equivalent packinghouse-door returns for CA, MI, NY, and WA; prices at point of first sale for other States.

² January of the following year.

**Grapes for Fresh Use: Monthly Average Prices Received,
United States, May 2003 - December 2007**

Year	May	Jun	Jul	Aug	Sep	Oct	Nov	Dec
	<i>Dollars Per Ton</i>	<i>Dollars Per Ton</i>	<i>Dollars Per Ton</i>	<i>Dollars Per Ton</i>	<i>Dollars Per Ton</i>	<i>Dollars Per Ton</i>	<i>Dollars Per Ton</i>	<i>Dollars Per Ton</i>
2003	930	970	760	650	620	600	660	730
2004	1,540	830	570	560	680	830	1,030	1,160
2005	1,010	910	530	530	610	600	490	390
2006	(¹)	2,420	1,030	880	910	830	930	1,310
2007	(¹)	770	660	680	790	940	1,200	1,710

¹ Insufficient sales to establish a price.

**Peaches for Fresh Use: Monthly Average Prices Received,
United States, 2003-2007¹**

State	May	Jun	Jul	Aug	Sep
	<i>Dollars per Ton</i>	<i>Dollars per Ton</i>	<i>Dollars per Ton</i>	<i>Dollars per Ton</i>	<i>Dollars per Ton</i>
2003	945	509	524	455	489
2004	918	476	412	427	522
2005	756	596	576	743	622
2006	(²)	809	721	746	589
2007	937	562	579	593	563

¹ Equivalent packinghouse-door returns for CA and WA; price at point of first sale for other States.

² Insufficient sales to establish a price.

**Pears for Fresh Use: Monthly Average Prices Received,
United States, July 2003 - June 2008¹**

Year	Jul	Aug	Sep	Oct	Nov	Dec	Jan ²	Feb	Mar	Apr	May	Jun
	<i>Dollars Per Ton</i>	<i>Dollars Per Ton</i>	<i>Dollars Per Ton</i>	<i>Dollars Per Ton</i>	<i>Dollars Per Ton</i>	<i>Dollars Per Ton</i>	<i>Dollars Per Ton</i>	<i>Dollars Per Ton</i>	<i>Dollars Per Ton</i>	<i>Dollars Per Ton</i>	<i>Dollars Per Ton</i>	<i>Dollars Per Ton</i>
2003	335	272	293	412	387	384	352	332	336	359	443	(³)
2004	325	381	390	432	434	437	445	465	458	465	482	513
2005	667	583	541	440	451	423	404	392	339	356	419	596
2006	759	286	288	568	573	563	541	517	537	597	651	687
2007	584	374	380	526	514	557	560	552	537	527	525	654

¹ Equivalent packinghouse-door returns for CA, NY, and WA; price at point of first sale for other States.

² January of the following year.

³ Insufficient sales to establish a price.

**Tree Nuts: Acreage, Yield, Production, Price and Value
by Crop, and State, 2005-2007**

Crop, State, and Year	Bearing Acreage	Yield per Acre ¹	Utilized Production	Price per Unit	Value of Utilized Production
	<i>Acres</i>	<i>Pounds</i>	<i>1,000 Pounds</i>	<i>Dollars per Pound</i>	<i>1,000 Dollars</i>
Almonds ² <i>(Shelled Basis)</i>					
CA					
2005	580,000	1,580	915,000	2.810	2,525,909
2006	585,000	1,920	1,120,000	2.060	2,258,790
2007	615,000	2,260	1,390,000	1.550	2,127,375
	<i>Acres</i>	<i>Tons</i>	<i>Tons</i>	<i>Dollars per Ton</i>	<i>1,000 Dollars</i>
Hazelnuts <i>(In-Shell Basis)</i>					
OR					
2005	28,300	0.98	27,600	2,240.00	61,824
2006	28,200	1.52	43,000	1,080.00	46,440
2007	28,100	1.26	35,500	2,040.00	72,420
	<i>Acres</i>	<i>Pounds</i>	<i>1,000 Pounds</i>	<i>Dollars per Pound</i>	<i>1,000 Dollars</i>
Macadamia Nuts <i>(In-Shell Basis)</i>					
HI					
2005	18,000	3,000	54,000	0.810	43,740
2006	15,000	3,870	58,000	0.670	38,860
2007	15,000	2,400	36,000	0.580	20,880
	<i>Acres</i>	<i>Pounds</i>	<i>1,000 Pounds</i>	<i>Dollars per Pound</i>	<i>1,000 Dollars</i>
Pistachios <i>(In-Shell Basis)</i>					
CA					
2005	105,000	2,700	283,000	2.050	580,150
2006	112,000	2,130	238,000	1.890	449,820
2007	114,000	3,650	416,000	1.350	561,600
	<i>Acres</i>	<i>Tons</i>	<i>Tons</i>	<i>Dollars per Ton</i>	<i>1,000 Dollars</i>
Walnuts (English) <i>(In-Shell Basis)</i>					
CA					
2005	215,000	1.65	355,000	1,570.00	557,350
2006	216,000	1.60	346,000	1,630.00	563,980
2007	218,000	1.49	325,000	2,320.00	754,000

¹ Yield is based on utilized production.

² Price and value are based on the edible portion of the crop only. Production includes inedible quantities of no value as follows: 2005, 16.1 million pounds; 2006, 23.5 million pounds; 2007, 17.5 million pounds. Shelling ratios are: 2005, 0.590; 2006, 0.585; 2007, 0.573.

**Tree Nuts: Utilization and Meat Production
by Crop, State, and United States, 2005-2007**

Crop, State, and Year	Utilized Production		Meat Production of Nuts Sold Shelled
	Sold In-Shell	Sold Shelled ¹	
	<i>Tons</i>	<i>Tons</i>	<i>Tons</i>
Hazelnuts			
OR			
2005	14,600	13,000	4,900
2006	24,000	19,000	8,200
2007	23,800	11,700	4,600
	<i>1,000 Pounds</i>	<i>1,000 Pounds</i>	<i>1,000 Pounds</i>
Pecans			
US			
2005	47,550	232,700	104,000
2006	20,400	186,900	82,400
2007	69,005	316,300	147,000
	<i>1,000 Pounds</i>	<i>1,000 Pounds</i>	<i>1,000 Pounds</i>
Pistachios			
CA			
2005	215,000	68,000	33,400
2006	201,000	37,000	18,500
2007	333,000	83,000	41,300
	<i>Tons</i>	<i>Tons</i>	<i>Tons</i>
Walnuts (English)			
CA			
2005	82,000	273,000	121,500
2006	71,000	275,000	118,000
2007	65,000	260,000	111,000

¹ In-shell basis.

**Pecans: Utilized Production and Price by Variety,
State, and United States, 2005-2007**

Variety and State	Utilized Production			Price per Pound		
	2005	2006	2007	2005	2006	2007
	<i>1,000 Pounds</i>	<i>1,000 Pounds</i>	<i>1,000 Pounds</i>	<i>Dollars</i>	<i>Dollars</i>	<i>Dollars</i>
Improved Varieties ¹						
AL	3,200	5,400	8,700	1.160	1.260	0.890
AZ	22,000	14,000	23,000	1.600	1.750	1.600
AR	1,100	1,150	1,500	1.400	1.330	1.090
CA	3,950	3,400	4,400	1.800	1.720	1.780
FL	300	200	1,700	1.400	1.800	1.000
GA	72,000	36,000	135,000	1.320	1.640	1.100
LA	1,000	3,500	3,000	1.750	1.400	1.200
MS	800	2,000	2,200	1.900	1.300	1.150
MO	200	160	2	1.880	1.650	1.200
NM	65,000	47,000	74,000	1.700	1.850	1.300
NC	1,650	420	160	1.000	1.350	1.510
OK	6,000	5,000	3,000	1.900	1.700	2.250
SC	1,500	900	1,500	1.090	1.790	1.160
TX	50,000	33,000	44,000	1.590	1.790	1.350
US	228,700	152,130	302,162	1.540	1.730	1.240
Native and Seedling						
AL	800	600	1,300	0.840	0.970	0.660
AR	1,200	1,050	800	1.100	1.150	0.760
FL	700	300	200	0.850	1.500	0.700
GA	8,000	6,000	15,000	0.800	1.210	0.720
KS	3,200	2,000	500	1.300	1.300	0.900
LA	4,000	17,500	11,000	1.000	0.900	0.700
MS	200	500	800	1.200	1.000	0.700
MO	2,400	940	3	1.240	1.350	1.000
NC	350	80	40	0.800	1.000	0.810
OK	15,000	12,000	27,000	1.200	1.150	0.750
SC	700	200	500	0.820	1.050	0.900
TX	15,000	14,000	26,000	1.090	1.160	0.700
US	51,550	55,170	83,143	1.080	1.090	0.722
All Pecans						
AL	4,000	6,000	10,000	1.100	1.230	0.860
AZ	22,000	14,000	23,000	1.600	1.750	1.600
AR	2,300	2,200	2,300	1.240	1.240	0.975
CA	3,950	3,400	4,400	1.800	1.720	1.780
FL	1,000	500	1,900	1.020	1.620	0.968
GA	80,000	42,000	150,000	1.270	1.580	1.060
KS	3,200	2,000	500	1.300	1.300	0.900
LA	5,000	21,000	14,000	1.150	0.983	0.807
MS	1,000	2,500	3,000	1.760	1.240	1.030
MO	2,600	1,100	5	1.290	1.390	1.000
NM	65,000	47,000	74,000	1.700	1.850	1.300
NC	2,000	500	200	0.965	1.290	1.370
OK	21,000	17,000	30,000	1.400	1.310	0.900
SC	2,200	1,100	2,000	1.000	1.660	1.100
TX	65,000	47,000	70,000	1.470	1.600	1.110
US	280,250	207,300	385,305	1.450	1.560	1.130

¹ Budded, grafted, or topworked varieties.

**Pecans: Value of Production by Variety,
State, and United States, 2005-2007**

Variety and State	Value of Production		
	2005	2006	2007
	<i>1,000 Dollars</i>	<i>1,000 Dollars</i>	<i>1,000 Dollars</i>
Improved Varieties ¹			
AL	3,712	6,804	7,743
AZ	35,200	24,500	36,800
AR	1,540	1,530	1,635
CA	7,110	5,848	7,832
FL	420	360	1,700
GA	95,040	59,040	148,500
LA	1,750	4,900	3,600
MS	1,520	2,600	2,530
MO	376	264	2
NM	110,500	86,950	96,200
NC	1,650	567	242
OK	11,400	8,500	6,750
SC	1,635	1,611	1,740
TX	79,500	59,070	59,400
US	351,353	262,544	374,674
Native and Seedling			
AL	672	582	858
AR	1,320	1,208	608
FL	595	450	140
GA	6,400	7,260	10,800
KS	4,160	2,600	450
LA	4,000	15,750	7,700
MS	240	500	560
MO	2,976	1,269	3
NC	280	80	32
OK	18,000	13,800	20,250
SC	574	210	450
TX	16,350	16,240	18,200
US	55,567	59,949	60,051
All Pecans			
AL	4,384	7,386	8,601
AZ	35,200	24,500	36,800
AR	2,860	2,738	2,243
CA	7,110	5,848	7,832
FL	1,015	810	1,840
GA	101,440	66,300	159,300
KS	4,160	2,600	450
LA	5,750	20,650	11,300
MS	1,760	3,100	3,090
MO	3,352	1,533	5
NM	110,500	86,950	96,200
NC	1,930	647	274
OK	29,400	22,300	27,000
SC	2,209	1,821	2,190
TX	95,850	75,310	77,600
US	406,920	322,493	434,725

¹ Budded, grafted, or topworked varieties.

Definition of Terms

Apples, Commercial Crop refers to orchards of 100 or more bearing age trees.

Bearing Acreage - An orchard, grove, or vineyard is considered bearing when it reaches an age when it can normally be expected to produce a commercially significant quantity of the crop. Bearing age is a function of many factors including variety, rootstock, year planted, etc. Bearing acreage is primarily based upon periodic orchard surveys. In non-survey years, bearing acreage is based on trends, county extension service data, end-of-year production surveys, and other indications.

Prices are a marketing year average for all methods of sale. For a crop sold for both fresh market and processing, the **Marketing Year Average Price (MYA)** is a weighted average of the fresh and processing price.

Prices for fresh fruit are the average prices producers receive at the point of first sale. This is commonly referred to as the **average price as sold**. Since the point of first sale is not the same for all producers, prices for the various methods of sale are weighted by the quantity sold. For example, in a given State, part of the fruit is sold free on board (F.O.B.) packed by growers, part is sold as bulk fruit at the packinghouse door, and some is sold retail at roadside stands. The fresh fruit **average price as sold** is a weighted average of the average price for each method of sale. The exception is fresh fruit sales in California, Washington, and New York (apples only) which are equivalent returns at packinghouse door. The equivalent packinghouse returns represent adjusted prices.

F.O.B. packed prices are adjusted to an equivalent incoming packinghouse door price by subtracting all costs that accumulate between the incoming packinghouse door and the F.O.B. price. These costs include grading, packing, inspecting fees, selling, and other costs.

Prices for fruit sold for processing are equivalent returns for fruit delivered to the processing plant door except for cranberries, California olives, and freestone peaches, which are priced at the first delivery point.

Crop value estimates in this report cover the marketing season or crop year and should not be confused with cash receipts from these crops which are on a calendar year.

Total Production is the quantity actually harvested plus quantities which would have been acceptable for fresh market or processing but were not harvested because of economic or natural reasons.

Unutilized Production is the difference between total and utilized production which is marketable fruit not harvested for economic or natural reasons and harvested fruit not sold or utilized.

Harvested not sold is fruit of marketable quality that was picked but not sold for various reasons. Harvested not sold amounts up to 2 percent of total production are considered normal seasonal losses and are excluded from total production. Reported values are above and beyond these normal seasonal losses.

Unharvested Production is marketable fruit produced, but not harvested for various reasons. Unharvested amounts up to 2 percent of total production are considered normal seasonal losses and are excluded from total production. Reported values are above and beyond these normal seasonal losses.

Utilization refers to first utilization, not necessarily final utilization. For example, frozen fruit includes some fruit that may be later used for making preserves. Grade-outs for fresh market fruit which are processed are included in the processing quantity. Fruit graded-out from canning or freezing and utilized for juice is included with juice.

Utilized Production is the amount sold plus the quantities used at home or held in storage.

Yield per Acre is based on total production which includes unharvested production and fruit harvested but not sold due to marketing conditions.

State Value of Utilized Production and MYA Price Computations

The following procedure is used to compute State Values of Utilized Production and MYA Prices:

Fresh Market Value = Fresh Market MYA
Times
Fresh Market Utilization

Process Market Value = Process Market MYA
Times
Process Market Utilization

"All" Sales Value = Fresh Market Value
Plus
Process Market Value

"All" Sales MYA = "All" Sales Value
Divided By
"All" Sales Utilization

For commodities with components not identified by market channel, substitute breakdown name for fresh/processing market and use the same procedure.

U.S. MYA Price Computations

The following procedure is used to compute the U.S. MYA Prices:

Fresh Market MYA = Fresh Market Value For All States
Divided By
Fresh Market Utilization For All States

Process Market MYA = Process Market Value For All States
Divided By
Process Market Utilization For All States

"All" Sales MYA = Sales Value For All States
Divided By
Sales Utilization For All States

Marketing Seasons for Noncitrus Fruits ¹

Apples

Eastern States, excluding GA, NJ, and SC.....	August - June
Central States, excluding IA, KY, MN, MO, TN, and WI.....	July - May
Western States, excluding AZ.....	August - June
All Other States.....	August - December

Apricots

CA.....	May 15 - July 5
UT.....	June 10 - August 15
WA.....	June 20 - August 1

Avocados

CA.....	November 1 - October 31
FL.....	June 20 - March 1
HI.....	January 1 - December 31

Bananas January 1 - December 31

Cherries, Sweet

CA.....	April 25 - June 15
MT.....	July 20 - August 20
All Other States.....	June - July

Cherries, Tart June 25 - August 15

Cranberries September 15 - January 1

Dates August 15 - March 15

Figs..... June 5 - October 30

Grapes

Table (CA).....	May 25 - July 20
Raisin (CA).....	June 5 - July 31
Wine (CA and WA).....	August 15 - December 15
Juice (WA).....	September 15 - November 1
All Other States.....	July - October

Guavas January 1 - December 31

Kiwifruit.....October 1 - May 31

¹See footnote on next page.

Marketing Seasons for Noncitrus Fruits ¹ (continued)

Nectarines	April 30 - October 15
Olives	
Fresh, Canned, and Other Processing	August 1 - July 31
Crushed for Oil	December 1 - November 30
Papayas	January 1 - December 31
Peaches	
Clingstone (CA).....	July 10 - September 15
Freestone (CA).....	April 20 - October 10
GA and SC.....	May - August
All Other States.....	July - September
Pears	
Bartlett (CA, OR, and WA)	July - December
Other (CA, OR, and WA)	July - June
All Other States.....	August - November
Pineapples	January 1 - December 31
Plums (CA)	May 15 - October 20
Prunes, Dried (CA)	August 20 - April 15
Prunes and Plums	
Fresh and Canning (ID, MI, OR, WA)	August 15 - October 15

Marketing Seasons for Tree Nuts ¹

Almonds	August 5 - November 15
Hazelnuts	October 1 - November 30
Macadamia Nuts	July 1 - June 30
Pecans	October 1 - March 31
Pistachios	September 30 - January 30
Walnuts	September 15 - November 10

¹ For detail by States, see Agricultural Handbook No. 729, "Fruits and Tree Nuts: Blooming, Harvesting, and Marketing Dates," Dec 2006.

Reliability of July Noncitrus Fruit Production Estimates

Reliability: To assist users in evaluating the reliability of the July noncitrus fruit total production estimates, the "Root Mean Square Error," a statistical measure based on past performance, is computed. The deviation between the first July total production estimate and the final estimate is expressed as a percentage of the final estimate. The average of squared percentage deviations for the latest 20-year period is computed. The square root of the average becomes statistically the "Root Mean Square Error." Probability statements can be made concerning expected differences in the current estimate relative to the final end-of-season estimate, assuming that factors affecting this year's estimate are not different from those influencing recent years. For example, the "Root Mean Square Error" for the July apple total production estimate is 1.3 percent. This means that chances are 2 out of 3 that the current production estimate will not be above or below the final estimate by more than 1.3 percent. Chances are 9 out of 10 (90 percent confidence level) that the difference will not exceed 2.2 percent.

Also, shown in the following table is a 20-year record for selected crops of the differences between the first July total production estimate and the final estimate. Using apples again as an example, changes between the first July estimate and the final estimate during the last 20 years have averaged 53.9 thousand tons, ranging from 10.3 thousand tons to 129.5 thousand tons. The first July estimate has been below the final estimate 7 times and above 13 times. This does not imply that the July estimate this year is likely to understate or overstate the final production.

Reliability of Selected Noncitrus Fruit Estimates

Crop	Unit	Root Mean Square Error		20-Year Record of Differences Between Initial Estimate and Final Estimate				
		Percent	90 Percent Confidence Interval	Quantity			Years	
				Average	Smallest	Largest	Below Final	Above Final
				<i>1,000</i>	<i>1,000</i>	<i>1,000</i>	<i>Number</i>	<i>Number</i>
Apples	Tons	1.3	2.2	53.9	10.3	129.5	7	13
Grapes	Tons	0.5	0.8	18.9	0.0	83.0	11	6
Peaches	Tons	1.2	2.0	10.9	0.0	25.1	7	9
Pears	Tons	1.4	2.4	8.0	0.0	35.0	6	13

Information Contacts

Listed below are the commodity statisticians in the Crops Branch of the National Agricultural Statistics Service to contact for additional information.

Jeff Geuder, Chief (202) 720-2127

Field Crops Section

Lance Honig, Head (202) 720-2127
Todd Ballard - Wheat, Rye (202) 720-8068
Shiela Corley - Cotton, Cotton Ginnings (202) 720-5944
Don Gephart - Hay, Oats, Sorghum (202) 690-3234
Ty Kalas - Corn, Proso Millet, Flaxseed (202) 720-9526
Dawn Keen - Crop Weather, Barley, Sugar Crops (202) 720-7621
Anthony Prillaman - Peanuts, Rice (202) 720-7688
Travis Thorson - Soybeans, Sunflower, Other Oilseeds (202) 720-7369

Fruits, Vegetables & Special Crops Section

Jorge Garcia-Pratts, Head (202) 720-2127
Leslie Colburn - Berries, Grapes, Maple Syrup, Tobacco (202) 720-7235
Debbie Flippin - Fresh and Processing Vegetables,
Onions, Strawberries (202) 720-2157
Mike Jacobsen - Apples, Apricots, Cherries, Cranberries,
Plums, Prunes (202) 720-4288
Doug Marousek - Floriculture, Nursery, Tree Nuts (202) 720-4215
Dan Norris - Austrian Winter Peas, Dry Edible Peas,
Lentils, Mint, Mushrooms, Peaches, Pears,
Wrinkled Seed Peas (202) 720-3250
Faye Propsom - Citrus, Tropical Fruits (202) 720-5412
Faye Propsom - Dry Beans, Potatoes, Sweet Potatoes (202) 720-4285
Kim Ritchie - Hops (360) 902-1940

ACCESS TO REPORTS!!

For your convenience, there are several ways to obtain NASS reports, data products, and services:

INTERNET ACCESS

All NASS reports are available free of charge on the worldwide Internet. For access, connect to the Internet and go to the NASS Home Page at: www.nass.usda.gov.

E-MAIL SUBSCRIPTION

All NASS reports are available by subscription free of charge direct to your e-mail address. Starting with the NASS Home Page at www.nass.usda.gov, under the right navigation, *Receive reports by Email*, click on **National** or **State**. Follow the instructions on the screen.

PRINTED REPORTS OR DATA PRODUCTS

CALL OUR TOLL-FREE ORDER DESK: 800-999-6779 (U.S. and Canada)
Other areas, please call 703-605-6220 FAX: 703-605-6900
(Visa, MasterCard, check, or money order acceptable for payment.)

ASSISTANCE

For **assistance** with general agricultural statistics or further information about NASS or its products or services, contact the **Agricultural Statistics Hotline** at **800-727-9540**, 7:30 a.m. to 4:00 p.m. ET, or e-mail: nass@nass.usda.gov.

The U.S. Department of Agriculture (USDA) prohibits discrimination in all its programs and activities on the basis of race, color, national origin, age, disability, and where applicable, sex, marital status, familial status, parental status, religion, sexual orientation, genetic information, political beliefs, reprisal, or because all or a part of an individual's income is derived from any public assistance program. (Not all prohibited bases apply to all programs.) Persons with disabilities who require alternative means for communication of program information (Braille, large print, audiotape, etc.) should contact USDA's TARGET Center at (202) 720-2600 (voice and TDD).

To file a complaint of discrimination, write to USDA, Director, Office of Civil Rights, 1400 Independence Avenue, S.W., Washington, D.C. 20250-9410, or call (800) 795-3272 (voice) or (202) 720-6382 (TDD). USDA is an equal opportunity provider and employer.