



United States
Department of
Agriculture

National
Agricultural
Statistics
Service



Noncitrus Fruits and Nuts 2008 Preliminary Summary

January 2009

Fr Nt 1-3 (09) a

USDA



Contents

	Page
Noncitrus Fruits and Tree Nuts	
Bearing Acreage, U.S.	7
Bearing Acreage and Yield per Acre by Crop	4
Narrative	3
Price and Value by Crop	6
Production Utilization, U.S.....	7
Total and Utilized Production by Crop.....	5
Noncitrus Fruits	
Apples, Commercial Crop	10, 64, 68
Apricots.....	20, 26, 27, 66, 70
Avocados	20
Bananas.....	62
Berries (excluding strawberries)	30, 67
California Dry Fruits.....	27
Cherries, Sweet	36, 40, 66
Cherries, Tart	38, 40, 65
Cranberries.....	42, 65
Dates	20
Figs	22, 26, 27
Grapes	27, 44, 66, 69, 70
Guavas	62
Hawaii Crops	62
Kiwifruit	22, 66
Nectarines	22
Olives	22, 26
Papayas	62
Peaches	27, 50, 65, 69
Pears.....	58, 66, 69, 70
Pineapples	62
Plums	22, 70
Prunes (dried basis).....	24, 27, 66
Prunes and Plums.....	24, 26, 66
Strawberries	28
Unutilized Production	64
Tree Nuts	
Almonds.....	71, 72
Hazelnuts	72
Macadamia Nuts	72
Pecans	73, 74
Pistachios	72
Walnuts.....	71, 72
Definition of Terms	76
Information Contacts.....	81
Marketing Seasons	78
Reliability of Production Data in this Report	80
State Value of Utilized Production Computation	77
U.S. MYA Price Computation.....	77

This page intentionally left blank.

Update Alert

Fresh and processed peach estimates for 2008 have been corrected on pages 54 and 55.

2008 Noncitrus Fruit Utilized Production Up 4 Percent, Value Up 2 Percent

In 2008, the Nation's utilized production of the leading noncitrus fruit crops totaled 17.7 million tons, up 4 percent from the 2007 utilized production. Utilized production increased from 2007 for CA prunes, prunes and plums (ID, MI, OR, and WA), cultivated and wild blueberries, cranberries, apples, CA dates, grapes, nectarines, strawberries, and CA plums.

The value of utilized production for noncitrus fruit crops totaled 11.6 billion dollars, up 2 percent from 2007. The value of utilized production for red raspberries increased 209 percent, CA prunes increased 63 percent, OR black raspberries increased 47 percent, cranberries increased 45 percent, tart cherries increased 21 percent, and prunes and plums (ID, MI, OR, and WA) increased 20 percent. However, the utilized value of production for CA plums decreased 46 percent, CA olives are down 41 percent, boysenberries and ME wild blueberries decreased 34 percent, CA dates decreased 30 percent, and OR loganberries are down 28 percent.

Highlights

Utilized apple production for 2008 is estimated at 10.0 billion pounds, up 10 percent from 2007. Utilized production in Washington increased 17 percent to 6.10 billion pounds from 2007. New York's utilized production decreased 6 percent from 2007, and Michigan's utilized production decreased 27 percent from 2007. In Washington, early spring frosts lead growers to begin harvesting later in the season, resulting in larger and more mature fruit. Furthermore, the late-maturing varieties were unaffected by the frosts. Summer hailstorms reduced yields in New York. Michigan orchards suffered through spring frosts and summer hail, resulting in greatly reduced yields. Most of the Southeast and Midwest States have recovered from the 2007 frost, with yields and production amounts returning to historic levels.

Utilized grape production for 2008 is estimated at 7.42 million tons, up 5 percent from the 2007 crop. The California crop, which accounts for 90 percent of the 2008 U.S. utilized grape production, is up 7 percent from the previous year. Also for California, wine type production increased 3 percent, while raisin type and table type production rose 11 percent and 10 percent from 2007, respectively. Utilized production increased from 2007 in all grape States except Arizona, Michigan, New York, Ohio, Texas, and Washington. Growers in some Midwest States experienced a spring freeze that reduced yields.

Utilized peach production for 2008 is estimated at 1.10 million tons, down 1 percent from the previous year but 11 percent above 2006. The California crop, accounting for 77 percent of the U.S. utilized peach production, is down 10 percent from 2007. For California, the Clingstone peach variety utilized production is down 15 percent and the Freestone peach variety utilized production is down 4 percent from 2007. Unusually cold temperatures on April 19 and 20 resulted in significant frost damaged to California's Clingstone peaches.

Utilized pear production for 2008 is estimated at 817,480 tons, down 6 percent from the previous year. Washington, the top producing State, utilized 363,000 tons, down 10 percent from 2007. California, the second largest producer at 240,000 tons, is down 1 percent from the previous season. Utilized pear production in Oregon, the third largest producing State, is 197,000 tons, down 4 percent from 2007.

U.S. Tree Nut Production Up 1 Percent, Value Down 7 Percent

U.S. tree nut production for crop year 2008 is 2.02 million tons (in-shell basis), 1 percent above a year earlier. The almond crop is 1.35 million tons, up 12 percent from 2007. Walnut production in 2008, at 375,000 tons, is up 14.3 percent from the previous year. The pistachio crop is 139,000 tons, 33 percent less than 2007. Pecan production in 2008 totals 95,500 tons, a 51 percent decrease from 2007. The hazelnut crop, at 32,000 tons, is 14 percent smaller than the previous year. Macadamia nut production is 27,000 tons, up 32 percent.

Value of U.S. utilized nut production in 2008 is 3.98 billion dollars, down 7 percent from the 2007 value. The 2008 almond crop is valued at 2.23 billion dollars, 7 percent less than the previous year. Pistachio value for 2008, at 539 million dollars, is 8 percent less than 2007. The value of the 2008 pecan crop decreased 61 percent to 270 million dollars. Hazelnut value, at 52.2 million dollars, is 31 percent below last year. The 2008 macadamia nut crop is valued at 31.1 million dollars, up 27 percent from 2007.

**Noncitrus Fruits and Nuts: Bearing Acreage and Yield per Acre
by Crop, United States, 2006-2008**

Crop	Bearing Acreage			Yield per Acre		
	2006	2007	2008	2006	2007	2008
	<i>Acres</i>	<i>Acres</i>	<i>Acres</i>	<i>Tons Fresh Equivalent</i>	<i>Tons Fresh Equivalent</i>	<i>Tons Fresh Equivalent</i>
Noncitrus Fruits						
Apples	359,990	350,890	349,890	13.70	13.00	14.40
Apricots	13,050	12,650	12,450	3.41	6.99	6.55
Avocados ¹	71,830	73,350		2.04	2.56	
Bananas (HI) ²	1,100	1,300	1,200	10.00	9.85	9.50
Blackberries (OR) ^{2,3}	6,900	6,700	6,300	3.07	4.40	3.01
Blueberries						
Cultivated ²	54,440	53,420	60,180	2.61	2.69	2.90
Wild (ME) ⁴						
Boysenberries ²	710	810	770	2.50	3.13	1.81
Loganberries (OR) ²	60	40	30	1.00	1.13	1.00
Raspberries ²						
Black (OR)	1,500	1,400	1,500	1.34	1.31	0.94
Red	11,500	11,200	11,100	2.77	2.69	2.70
All (CA)	3,600	3,500	3,400	13.50	11.30	8.50
Cherries, Sweet	80,600	81,670	82,610	3.65	3.80	2.99
Cherries, Tart	35,550	34,750	34,650	3.69	3.65	3.10
Cranberries	38,500	38,100	38,200	8.95	8.60	9.96
Dates (CA)	5,500	5,300	5,300	3.22	3.08	3.34
Figs (CA)	10,300	9,100	9,400	4.16	5.25	4.26
Grapes	940,600	936,500	938,550	6.78	7.51	7.92
Guavas (HI) ^{2,5}	365	170		10.20	12.70	
Kiwifruit (CA)	4,200	4,200	4,200	6.21	5.83	4.83
Nectarines	34,400	32,400	32,300	6.74	8.73	9.09
Olives (CA)	31,000	30,000	30,000	0.76	4.42	2.23
Papayas (HI) ²	1,530	1,310	1,340	9.40	12.80	12.40
Peaches	129,130	125,310	124,000	7.82	8.99	9.05
Pears	59,840	58,640	58,640	14.10	14.90	14.00
Pineapples (HI) ⁶	12,600					
Plums (CA)	31,000	29,500	29,500	5.10	5.15	5.22
Prunes (CA)	65,000	64,000	64,000	9.75	3.76	5.61
Prunes & Plums ⁷	3,380	3,340	3,240	6.36	3.62	4.81
Strawberries ²	53,460	52,180	54,470	22.50	23.50	23.30
Total	2,061,635	2,021,730	1,957,220			
				<i>Tons In-Shell Equivalent</i>	<i>Tons In-Shell Equivalent</i>	<i>Tons In-Shell Equivalent</i>
Tree Nuts						
Almonds (CA) ⁸	610,000	640,000	660,000	1.57	1.89	2.05
Hazelnuts (OR)	28,200	28,600	28,400	1.52	1.29	1.13
Macadamias (HI)	15,000	15,000	16,000	1.94	1.37	1.69
Pecans ⁴						
Pistachios (CA)	112,000	115,000	118,000	1.07	1.81	1.18
Walnuts (CA)	216,000	218,000	218,000	1.60	1.50	1.72
Total	981,200	1,016,600	1,040,400			

¹ Estimates for 2008 will be published on July 8, 2009.

² Harvested acreage. Yield based on utilized production.

³ Cultivated.

⁴ Bearing acreage and yield not estimated.

⁵ Estimates for 2008 will be published on May 9, 2009.

⁶ Acreage is total acres in crop, not harvested acreage. Yield is not estimated. 2007 and 2008 data not published to avoid disclosure of individual operations.

⁷ ID, MI, OR, and WA.

⁸ Yield based on in-shell equivalent. Shelling ratios are: 2006 - 0.585; 2007 - 0.573; 2008 - 0.573.

**Noncitrus Fruits and Nuts: Total and Utilized Production
by Crop, United States, 2006-2008**

Crop	Total Production			Utilized Production		
	2006	2007	2008	2006	2007	2008
	<i>1,000 Tons Fresh Equivalent</i>	<i>1,000 Tons Fresh Equivalent</i>	<i>1,000 Tons Fresh Equivalent</i>	<i>1,000 Tons Fresh Equivalent</i>	<i>1,000 Tons Fresh Equivalent</i>	<i>1,000 Tons Fresh Equivalent</i>
Noncitrus Fruits						
Apples	4,911.7	4,544.7	5,017.6	4,865.1	4,522.7	4,969.8
Apricots	44.5	88.5	81.5	44.5	88.5	77.4
Avocados ¹	146.5	188.1		146.5	188.1	
Bananas (HI) ²				11.0	12.8	11.4
Blackberries (OR) ³	21.3	32.0	19.6	21.2	29.5	19.0
Blueberries						
Cultivated	142.0	143.6	174.5	141.8	143.4	174.3
Wild (ME)	37.3	38.6	45.0	37.3	38.6	45.0
Boysenberries	1.8	2.8	1.5	1.8	2.5	1.4
Loganberries (OR) ⁴	0.1			0.1		
Raspberries						
Black (OR)	2.0	1.9	1.4	2.0	1.8	1.4
Red	31.9	30.1	30.0	31.9	30.1	30.0
All (CA)	48.6	39.4	28.9	48.6	39.4	28.9
Cherries, Sweet	294.2	310.7	247.1	287.5	306.2	239.7
Cherries, Tart	131.0	126.6	107.2	124.3	124.4	106.6
Cranberries	344.5	327.7	380.3	339.3	327.7	380.3
Dates (CA)	17.7	16.3	17.7	17.7	16.3	17.7
Figs (CA)	42.8	47.8	40.0	42.8	47.8	40.0
Grapes	6,377.5	7,037.3	7,434.9	6,366.2	7,036.3	7,421.2
Guavas (HI) ^{2 5}				3.7	2.2	
Kiwifruit (CA)	26.1	24.5	20.3	25.4	23.7	19.3
Nectarines	231.9	283.0	293.5	231.9	283.0	293.5
Olives (CA)	23.5	132.5	66.8	23.5	132.5	66.8
Papayas (HI) ²				14.4	16.7	16.6
Peaches	1,010.3	1,127.2	1,121.9	987.2	1,115.9	1,100.1
Pears	842.0	873.0	818.5	831.1	871.9	817.5
Pineapples (HI) ⁶				185.0		
Plums (CA)	158.0	152.0	154.0	158.0	152.0	154.0
Prunes (CA)	633.6	240.8	359.0	604.8	234.9	359.0
Prunes & Plums ⁷	21.5	12.1	15.6	19.2	10.9	15.6
Strawberries ²				1,201.9	1,222.7	1,265.9
Total				16,815.7	17,022.5	17,672.4
	<i>1,000 Tons In-Shell Equivalent</i>	<i>1,000 Tons In-Shell Equivalent</i>	<i>1,000 Tons In-Shell Equivalent</i>	<i>1,000 Tons In-Shell Equivalent</i>	<i>1,000 Tons In-Shell Equivalent</i>	<i>1,000 Tons In-Shell Equivalent</i>
Tree Nuts ²						
Almonds (CA)				957.3	1,212.9	1,352.5
Hazelnuts (OR)				43.0	37.0	32.0
Macadamias (HI)				29.0	20.5	27.0
Pecans				103.7	193.7	95.5
Pistachios (CA)				119.0	208.0	139.0
Walnuts (CA)				346.0	328.0	375.0
Total				1,598.0	2,000.1	2,021.0

¹ Estimates for 2008 will be published on July 8, 2009.

² Only utilized production estimated.

³ Cultivated.

⁴ Production less than 0.1 thousand tons in 2007 and 2008.

⁵ Estimates for 2008 will be published on May 9, 2009.

⁶ Only utilized production estimated. 2007 and 2008 data not published to avoid disclosure of individual operations.

⁷ ID, MI, OR, and WA.

**Noncitrus Fruits and Nuts: Price and Value
by Crop, United States, 2006-2008**

Crop	Unit ¹	Price			Value of Utilized Production		
		2006	2007	2008	2006	2007	2008
		<i>Dollars</i>	<i>Dollars</i>	<i>Dollars</i>	<i>1,000 Dollars</i>	<i>1,000 Dollars</i>	<i>1,000 Dollars</i>
Noncitrus Fruits							
Apples	Lb	0.227	0.288	0.262	2,213,155	2,608,220	2,599,499
Apricots	Ton	665.00	477.00	532.00	29,563	42,227	41,183
Avocados ²	Ton	1,800.00	1,740.00		262,942	328,089	
Bananas (HI)	Lb	0.490	0.410	0.440	10,780	10,496	10,032
Blackberries (OR) ³	Lb	0.854	0.486	0.605	36,193	28,597	22,941
Blueberries	Lb						
Cultivated	Lb	1.760	1.850	1.540	500,052	531,075	538,674
Wild (ME)	Lb	0.805	1.070	0.608	60,040	83,031	54,707
Boysenberries	Lb	1.290	0.602	0.728	4,583	3,051	2,024
Loganberries (OR)	Lb	0.833	0.978	1.050	100	88	63
Raspberries	Lb						
Black (OR)	Lb	2.440	0.982	1.870	9,780	3,583	5,260
Red	Lb	0.398	0.538	1.670	25,346	32,320	99,915
All (CA)	Lb	2.150	2.880	3.100	208,980	226,800	179,180
Cherries, Sweet	Ton	1,620.00	1,820.00	2,380.00	465,225	557,056	570,756
Cherries, Tart	Lb	0.215	0.273	0.385	53,454	67,923	82,099
Cranberries	Bbl	41.10	46.90	58.40	278,888	307,233	444,104
Dates (CA)	Ton	2,140.00	2,290.00	1,470.00	37,878	37,327	26,019
Figs (CA) ²	Ton	426.00	401.00		18,253	19,145	
Grapes	Ton	519.00	491.00	450.00	3,304,631	3,451,855	3,341,758
Guavas (HI) ²	Lb	0.142	0.157		1,051	675	
Kiwifruit (CA) ²	Ton	911.00	950.00		23,148	22,517	
Nectarines	Ton	522.00	340.00	366.00	121,004	96,305	107,480
Olives (CA)	Ton	771.00	654.00	767.00	18,119	86,694	51,253
Papayas (HI)	Lb	0.385	0.392	0.432	11,049	13,094	14,286
Peaches	Ton	520.00	450.00	490.00	513,093	502,087	539,491
Pears	Ton	397.00	416.00	473.00	329,928	363,092	386,787
Pineapples (HI) ⁴	Ton	398.00		529.00	73,652		
Plums (CA)	Ton	688.00	665.00	356.00	108,648	101,077	54,824
Prunes (CA) ⁵	Ton	1,390.00	1,450.00	1,520.00	262,710	117,450	191,520
Prunes & Plums ⁶	Ton	452.00	454.00	380.00	8,678	4,956	5,926
Strawberries	Cwt	63.20	71.60	74.40	1,519,494	1,751,108	1,884,799
Total ⁷					10,510,417	11,397,171	11,617,719
Tree Nuts							
Almonds (CA)	Lb	2.060	1.750	1.450	2,258,790	2,401,875	2,228,650
(Shelled)	Lb	2.060	1.750	1.450	2,258,790	2,401,875	2,228,650
Hazelnuts (OR)	Ton	1,080.00	2,040.00	1,630.00	46,440	75,480	52,160
Macadamias (HI)	Lb	0.670	0.600	0.580	38,860	24,600	31,320
Pecans	Lb	1.560	1.120	1.410	322,493	433,644	269,985
Pistachios (CA)	Lb	1.890	1.410	1.940	449,820	586,560	539,320
Walnuts (CA) ²	Ton	1,630.00	2,290.00		563,980	751,120	
Total ⁷					3,680,383	4,273,279	3,980,185

¹ Ton refers to the 2,000 lb. short ton.

² Estimates for 2008 will be published on July 8, 2009.

³ Cultivated.

⁴ 2007 and 2008 data not published to avoid disclosure of individual operations.

⁵ Price is for dried basis.

⁶ ID, MI, OR, and WA.

⁷ Includes estimated 2008 value of production for crops noted by footnote 2. Used 2007 price to compute the 2008 fig, kiwifruit, and walnut value. The 2007 values for avocados and guavas are carried forward.

**Fruits and Nuts: Bearing Acreage,
United States, 2006-2008**

Year	Citrus Fruits ¹	Major Deciduous Fruits ²	Miscellaneous Noncitrus ³	Nuts ⁴	Total
	<i>Acres</i>	<i>Acres</i>	<i>Acres</i>	<i>Acres</i>	<i>Acres</i>
2006	886,800	1,752,540	309,095	981,200	3,929,635
2007	866,200	1,729,650	292,080	1,016,600	3,904,530
2008 ⁵	841,000	1,729,830	227,390	1,040,400	3,838,620

¹ Grapefruit, lemons, oranges, tangelos, tangerines, and Temples.

² Commercial apples, apricots, cherries, grapes, nectarines, peaches, pears, plums, and prunes.

³ Avocados, bananas, berries, cranberries, dates, figs, guavas, kiwifruit, olives, papayas, pineapples, and strawberries.

⁴ Almonds, hazelnuts, macadamia nuts, pistachios, and walnuts.

⁵ Preliminary. Avocados, guavas, and pineapples not included.

**Noncitrus Fruits: Production Utilization,
United States, 2006-2008 ¹**

Year	Utilized Production	Fresh	Processed ²					
			Canned	Dried	Juice	Frozen	Wine	Other
	<i>1,000 Tons</i>	<i>1,000 Tons</i>	<i>1,000 Tons</i>	<i>1,000 Tons</i>	<i>1,000 Tons</i>	<i>1,000 Tons</i>	<i>1,000 Tons</i>	<i>1,000 Tons</i>
2006	16,815.7	6,930.0	1,400.3	2,219.4	1,256.4	710.2	3,725.6	234.5
2007 ³	17,022.5	7,007.9	1,453.0	2,030.3	1,256.9	748.1	3,920.8	277.8
2008 ³	17,672.4							

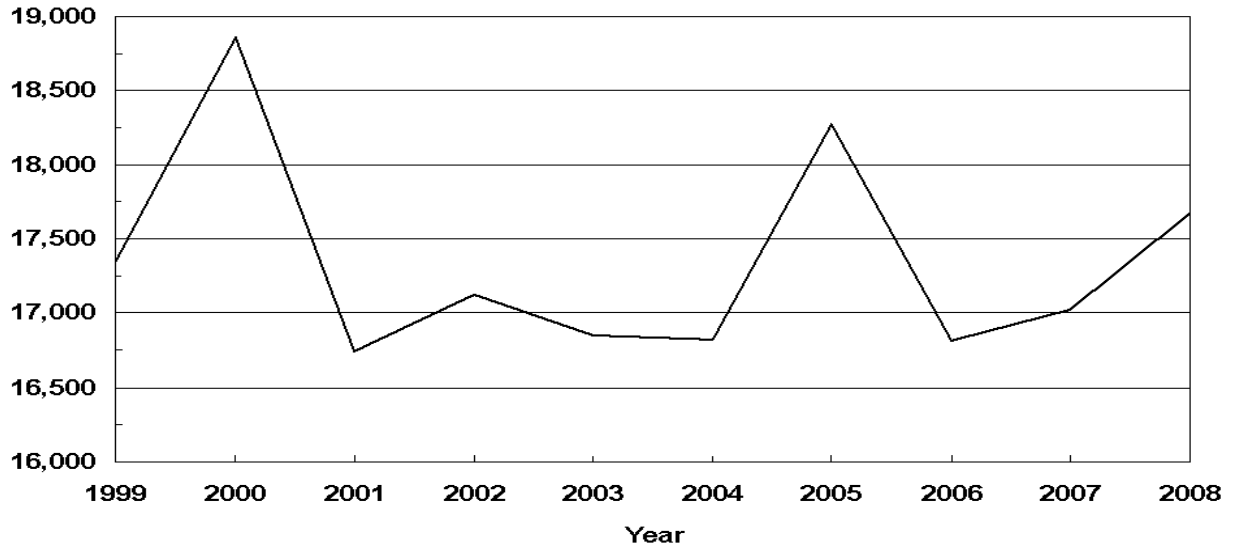
¹ 2008 is preliminary. Avocados and guavas not included. Fresh and processed tons will be published on July 8, 2009. Cranberry quantity included in utilized production, excluded from fresh and processed breakdown.

² Processed strawberries are included in frozen.

³ Pineapples not included.

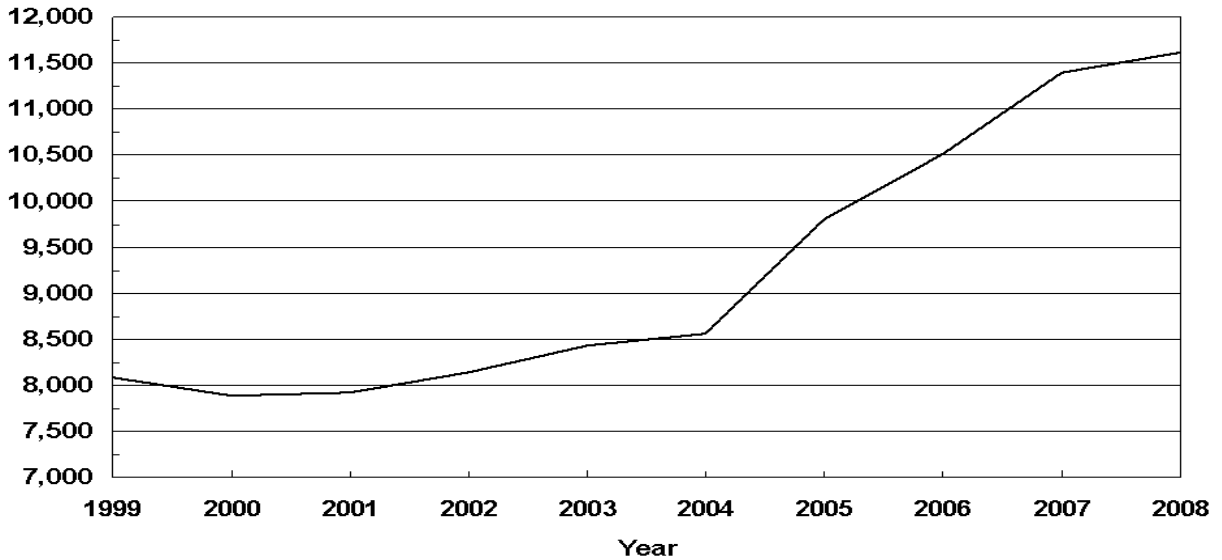
U.S. Noncitrus Fruits Utilized Production 1999-2008

(000) Tons Fresh
Equivalent



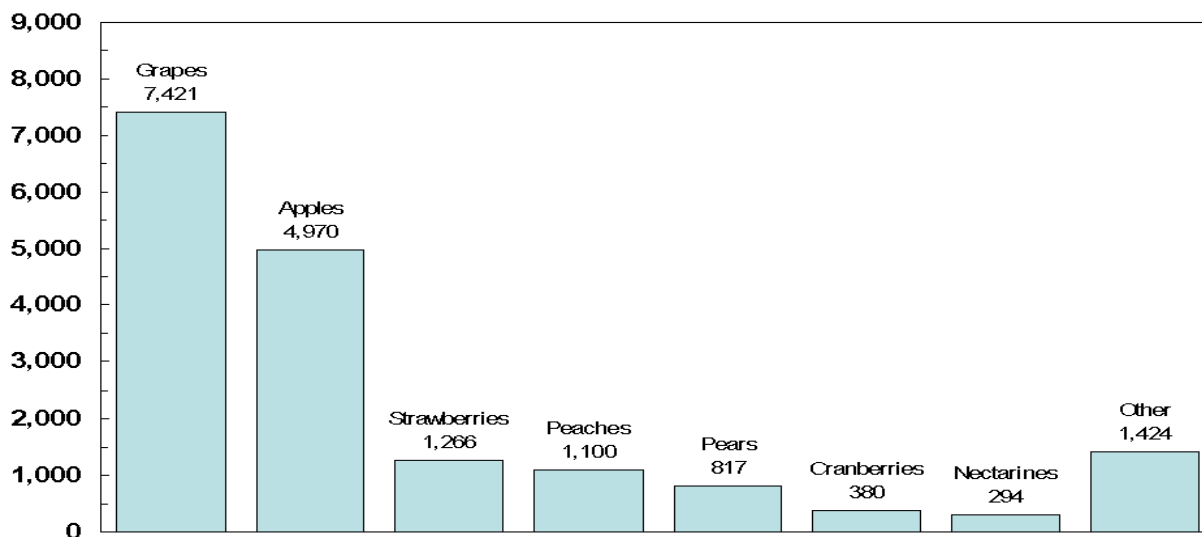
U.S. Noncitrus Fruits Value of Utilized Production 1999-2008

Million Dollars



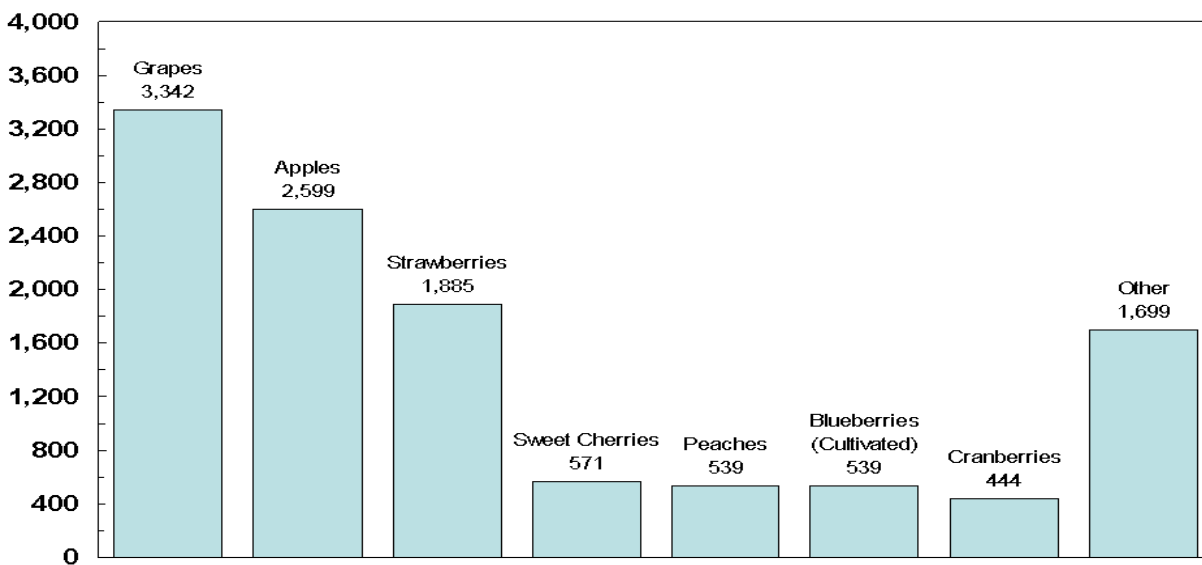
U.S. Noncitrus Fruits Utilized Production by Major Fruit, 2008

(000) Tons Fresh
Equivalent



U.S. Noncitrus Fruits Value of Utilized Production by Major Fruit, 2008

Million Dollars



**Apples, Commercial: Bearing Acreage and Yield
by State and United States, 2006-2008**

State	Bearing Acreage			Yield per Acre ¹		
	2006	2007	2008	2006	2007	2008
	<i>Acres</i>	<i>Acres</i>	<i>Acres</i>	<i>Pounds</i>	<i>Pounds</i>	<i>Pounds</i>
AZ	1,100	1,200	1,200	27,400	19,200	15,000
CA	21,000	20,500	19,500	16,900	16,800	16,900
CO	1,500	1,600	1,400	10,000	8,130	12,900
CT	2,200	2,200	2,200	7,950	10,500	9,320
GA	1,300	600	600	10,000	3,330	20,000
ID	2,800	2,800	2,800	21,400	12,500	32,100
IL	3,000	2,500	2,500	17,500	2,400	18,500
IN	2,300	2,100	2,100	15,900	9,520	11,000
IA	1,300	1,100	1,100	5,150	2,450	4,270
KY	790	790	790	8,730	759	9,750
ME	3,200	3,100	3,100	7,340	12,900	12,600
MD	2,300	2,100	1,900	14,200	13,800	17,600
MA	4,000	4,000	4,000	8,000	9,630	9,750
MI	38,500	36,000	35,500	22,900	21,400	15,800
MN	2,700	3,000	3,000	8,520	8,670	9,030
MO	2,400	2,000	1,900	13,500	750	15,900
NH	2,100	2,100	2,100	13,600	16,400	16,700
NJ	2,100	2,000	2,000	21,400	21,000	20,000
NY	45,000	42,000	42,000	28,000	31,200	29,300
NC	6,800	6,800	6,800	25,400	8,820	25,700
OH	6,400	6,000	7,000	15,900	9,270	14,900
OR	4,200	4,800	4,800	35,700	28,100	35,400
PA	21,000	20,800	21,000	22,400	22,600	20,700
RI	300	300	300	6,670	8,670	7,670
SC	600	500	500	5,000	600	14,000
TN	1,000	1,000	900	10,000	100	11,100
UT	1,400	1,400	1,400	7,140	13,600	8,570
VT	2,700	2,800	2,800	13,300	13,600	15,700
VA	12,000	12,000	12,000	18,300	17,900	19,200
WA	154,000	153,000	153,000	36,000	34,000	39,900
WV	5,000	5,000	5,000	18,000	16,000	17,000
WI	5,000	4,800	4,700	11,400	10,800	12,100
US	359,990	350,890	349,890	27,300	25,900	28,700

¹ Yield is based on total production, which includes unharvested production and fruit harvested but not sold due to market conditions.

**Apples, Commercial: Total and Utilized Production
by State and United States, 2006-2008**

State	Total Production			Utilized Production		
	2006	2007	2008	2006	2007	2008
	<i>Million Pounds</i>	<i>Million Pounds</i>	<i>Million Pounds</i>	<i>Million Pounds</i>	<i>Million Pounds</i>	<i>Million Pounds</i>
AZ	30.1	23.0	18.0	30.0	23.0	18.0
CA	355.0	345.0	330.0	355.0	345.0	330.0
CO	15.0	13.0	18.0	14.0	13.0	17.0
CT	17.5	23.0	20.5	16.5	22.0	20.0
GA	13.0	2.0	12.0	12.0	2.0	12.0
ID	60.0	35.0	90.0	55.0	35.0	90.0
IL	52.5	6.0	46.2	44.8	4.9	39.6
IN	36.5	20.0	23.0	32.0	18.0	21.5
IA	6.7	2.7	4.7	5.8	1.7	3.9
KY	6.9	0.6	7.7	6.3	0.4	6.9
ME	23.5	40.0	39.0	23.5	36.0	37.0
MD	32.7	29.0	33.5	32.7	29.0	33.0
MA	32.0	38.5	39.0	30.5	36.5	37.0
MI	880.0	770.0	560.0	855.0	770.0	560.0
MN	23.0	26.0	27.1	17.0	20.1	24.3
MO	32.5	1.5	30.2	30.5	1.4	30.0
NH	28.5	34.5	35.0	27.5	33.0	34.0
NJ	45.0	42.0	40.0	44.0	42.0	36.0
NY	1,260.0	1,310.0	1,230.0	1,250.0	1,300.0	1,180.0
NC	173.0	60.0	175.0	170.0	60.0	175.0
OH	102.0	55.6	104.0	101.0	55.6	104.0
OR	150.0	135.0	170.0	150.0	135.0	170.0
PA	470.0	470.0	435.0	467.0	467.0	425.0
RI	2.0	2.6	2.3	1.8	2.4	2.2
SC	3.0	0.3	7.0	2.4	0.3	6.3
TN	10.0	0.1	10.0	9.0	0.1	8.7
UT	10.0	19.0	12.0	9.9	18.0	11.6
VT	36.0	38.0	44.0	32.0	33.0	41.0
VA	220.0	215.0	230.0	214.0	215.0	230.0
WA	5,550.0	5,200.0	6,100.0	5,550.0	5,200.0	6,100.0
WV	90.0	80.0	85.0	88.0	77.0	81.0
WI	57.0	52.0	57.0	53.0	49.0	54.5
US	9,823.4	9,089.4	10,035.2	9,730.2	9,045.4	9,939.5

**Apples, Commercial: Price and Value
by State and United States, 2006-2008**

State	Price per Pound			Value of Utilized Production		
	2006	2007	2008	2006	2007	2008
	<i>Dollars</i>	<i>Dollars</i>	<i>Dollars</i>	<i>1,000 Dollars</i>	<i>1,000 Dollars</i>	<i>1,000 Dollars</i>
AZ	0.181	0.219	0.223	5,438	5,040	4,021
CA	0.240	0.263	0.258	85,068	90,769	85,288
CO	0.270	0.215	0.206	3,780	2,790	3,500
CT	0.534	0.489	0.545	8,807	10,766	10,890
GA	0.202	0.500	0.373	2,419	1,000	4,470
ID	0.193	0.252	0.289	10,625	8,820	25,985
IL	0.348	0.688	0.394	15,582	3,373	15,602
IN	0.290	0.280	0.364	9,271	5,045	7,835
IA	0.504	0.642	0.516	2,921	1,092	2,011
KY	0.377	0.518	0.540	2,376	207	3,727
ME	0.419	0.409	0.500	9,851	14,739	18,509
MD	0.197	0.196	0.239	6,450	5,697	7,896
MA	0.494	0.437	0.527	15,072	15,960	19,486
MI	0.141	0.169	0.216	120,386	130,325	121,000
MN	0.543	0.637	0.734	9,228	12,807	17,827
MO	0.213	0.213	0.253	6,486	298	7,600
NH	0.352	0.356	0.427	9,683	11,750	14,504
NJ	0.410	0.229	0.314	18,060	9,609	11,310
NY	0.201	0.222	0.221	250,905	288,260	260,525
NC	0.144	0.098	0.161	24,560	5,864	28,247
OH	0.346	0.435	0.397	34,977	24,159	41,302
OR	0.198	0.281	0.222	29,712	37,943	37,752
PA	0.128	0.142	0.183	59,813	66,489	77,629
RI	0.542	0.561	0.670	975	1,346	1,475
SC	0.156	0.473	0.178	375	142	1,119
TN	0.273	0.400	0.344	2,456	40	2,991
UT	0.308	0.329	0.286	3,047	5,916	3,315
VT	0.316	0.332	0.476	10,125	10,961	19,514
VA	0.098	0.121	0.169	20,964	26,122	38,788
WA	0.253	0.342	0.274	1,403,282	1,780,420	1,669,200
WV	0.092	0.098	0.100	8,058	7,557	8,077
WI	0.423	0.468	0.516	22,403	22,914	28,104
US	0.227	0.288	0.262	2,213,155	2,608,220	2,599,499

**Apples, Commercial: Fresh Market Utilization and Price
by State and United States, 2006-2008¹**

State	Fresh Market					
	Quantity			Price per Pound ²		
	2006	2007	2008	2006	2007	2008
	<i>Million Pounds</i>	<i>Million Pounds</i>	<i>Million Pounds</i>	<i>Dollars</i>	<i>Dollars</i>	<i>Dollars</i>
AZ	4.0	4.0		0.400	0.560	
CA	155.0	155.0		0.412	0.431	
CO	10.0	6.0		0.350	0.360	
CT	14.5	19.5		0.585	0.535	
ID	30.0	20.0		0.330	0.375	
IN	20.0	10.0		0.429	0.450	
ME	19.0	28.5		0.500	0.490	
MD	18.7	15.0		0.285	0.307	
MA	26.0	30.5		0.570	0.510	
MI	295.0	265.0		0.245	0.290	
MO	20.5	0.7		0.271	0.328	
NH	17.5	21.0		0.520	0.520	
NJ	33.0	26.0		0.524	0.327	
NY	690.0	690.0		0.302	0.341	
NC	68.0	4.8		0.251	0.340	
OH	87.3	48.7		0.390	0.483	
OR	105.0	90.0		0.267	0.387	
PA	132.0	137.0		0.257	0.294	
SC	0.9	0.2		0.293	0.650	
UT	8.9	15.6		0.333	0.370	
VT	27.5	21.0		0.360	0.470	
VA	34.0	37.0		0.238	0.290	
WA	4,350.0	4,350.0		0.313	0.390	
WV	16.0	14.0		0.173	0.187	
WI	44.0	41.0		0.490	0.540	
Oth Sts	81.7	26.8		0.420	0.719	
US	6,308.5	6,077.3		0.316	0.383	

¹ Estimates for 2008 will be published on July 8, 2009.

² Equivalent packinghouse door returns for CA, MI, NY, and WA; price at first sale for all Other States.

**Apples, Commercial: Value of Fresh Market Production
by State and United States, 2006-2008 ¹**

State	Fresh Market		
	Value of Production		
	2006	2007	2008
	<i>1,000 Dollars</i>	<i>1,000 Dollars</i>	<i>1,000 Dollars</i>
AZ	1,600	2,240	
CA	63,860	66,805	
CO	3,500	2,160	
CT	8,483	10,433	
ID	9,900	7,500	
IN	8,580	4,500	
ME	9,500	13,965	
MD	5,330	4,605	
MA	14,820	15,555	
MI	72,275	76,850	
MO	5,556	230	
NH	9,100	10,920	
NJ	17,292	8,502	
NY	208,380	235,290	
NC	17,068	1,632	
OH	34,047	23,522	
OR	28,035	34,830	
PA	33,924	40,278	
SC	264	130	
UT	2,964	5,772	
VT	9,900	9,870	
VA	8,092	10,730	
WA	1,361,550	1,696,500	
WV	2,768	2,618	
WI	21,560	22,140	
Oth Sts	34,302	19,273	
US	1,992,650	2,326,850	

¹ Estimates for 2008 will be published on July 8, 2009.

**Apples, Commercial: Processed Utilization and Price
by State and United States, 2006-2008 ¹**

State	Processed					
	Quantity			Price per Ton		
	2006	2007	2008	2006	2007	2008
	<i>Million Pounds</i>	<i>Million Pounds</i>	<i>Million Pounds</i>	<i>Dollars</i>	<i>Dollars</i>	<i>Dollars</i>
AZ	26.0	19.0		295.00	295.00	
CA	200.0	190.0		212.00	252.00	
CO	4.0	7.0		140.00	180.00	
CT	2.0	2.5		324.00	266.00	
ID	25.0	15.0		58.00	176.00	
IN	12.0	8.0		115.00	136.00	
ME	4.5	7.5		156.00	206.00	
MD	14.0	14.0		160.00	156.00	
MA	4.5	6.0		112.00	135.00	
MI	560.0	505.0		172.00	212.00	
MO	10.0	0.7		186.00	194.00	
NH	10.0	12.0		117.00	138.00	
NJ	11.0	16.0		140.00	138.00	
NY	560.0	610.0		152.00	174.00	
NC	102.0	55.2		147.00	153.00	
OH	13.7	6.9		136.00	185.00	
OR	45.0	45.0		74.50	138.00	
PA	335.0	330.0		155.00	159.00	
SC	1.5	0.1		148.00	240.00	
UT	1.0	2.4		166.00	120.00	
VT	4.5	12.0		100.00	182.00	
VA	180.0	178.0		143.00	173.00	
WA	1,200.0	850.0		69.60	197.00	
WV	72.0	63.0		147.00	157.00	
WI	9.0	8.0		187.00	194.00	
Oth Sts	15.0	4.8		221.00	247.00	
US	3,421.7	2,968.1		129.00	190.00	

¹ Estimates for 2008 will be published on July 8, 2009.

**Apples, Commercial: Value of Processed Production
by State and United States, 2006-2008 ¹**

State	Processed		
	Value of Production		
	2006	2007	2008
	<i>1,000 Dollars</i>	<i>1,000 Dollars</i>	<i>1,000 Dollars</i>
AZ	3,838	2,800	
CA	21,208	23,964	
CO	280	630	
CT	324	333	
ID	725	1,320	
IN	691	545	
ME	351	774	
MD	1,120	1,092	
MA	252	405	
MI	48,111	53,475	
MO	930	68	
NH	583	830	
NJ	768	1,107	
NY	42,525	52,970	
NC	7,492	4,232	
OH	930	637	
OR	1,677	3,113	
PA	25,889	26,211	
SC	111	12	
UT	83	144	
VT	225	1,091	
VA	12,872	15,392	
WA	41,732	83,920	
WV	5,290	4,939	
WI	843	774	
Oth Sts	1,655	592	
US	220,505	281,370	

¹ Estimates for 2008 will be published on July 8, 2009.

**Apples, Commercial: Processed Utilization, Use, and Price
by State and United States, 2006-2008¹**

Use and State	Processed Utilization					
	Quantity			Price per Ton		
	2006	2007	2008	2006	2007	2008
	<i>Million Pounds</i>	<i>Million Pounds</i>	<i>Million Pounds</i>	<i>Dollars</i>	<i>Dollars</i>	<i>Dollars</i>
Canned						
MI	215.0	165.0		170.00	220.00	
NY	300.0	330.0		172.00	174.00	
NC	59.0	30.4		160.00	164.00	
PA	258.0	230.0		168.00	166.00	
VA	117.0	145.0		157.00	177.00	
WA	150.0	120.0		92.10	207.00	
WV	47.0	43.0		163.00	169.00	
Oth Sts	21.3	27.8		149.00	201.00	
US	1,167.3	1,091.2		158.00	184.00	
Juice & Cider						
CA ²	175.0			222.00		
MI	175.0	155.0		120.00	160.00	
NY	190.0	210.0		112.00	145.00	
NC	30.0	19.7		118.00	137.00	
OR	27.0	25.0		46.00	100.00	
PA	67.0	90.0		102.00	140.00	
VA	42.0	29.0		102.00	157.00	
WA	700.0	450.0		54.50	192.00	
WV	20.0	16.0		110.00	127.00	
Oth Sts	124.2	262.6		163.00	223.00	
US	1,550.2	1,257.3		102.00	179.00	

See footnote(s) at end of table.

--continued

**Apples, Commercial: Processed Utilization, Use, and Price
by State and United States, 2006-2008¹ (continued)**

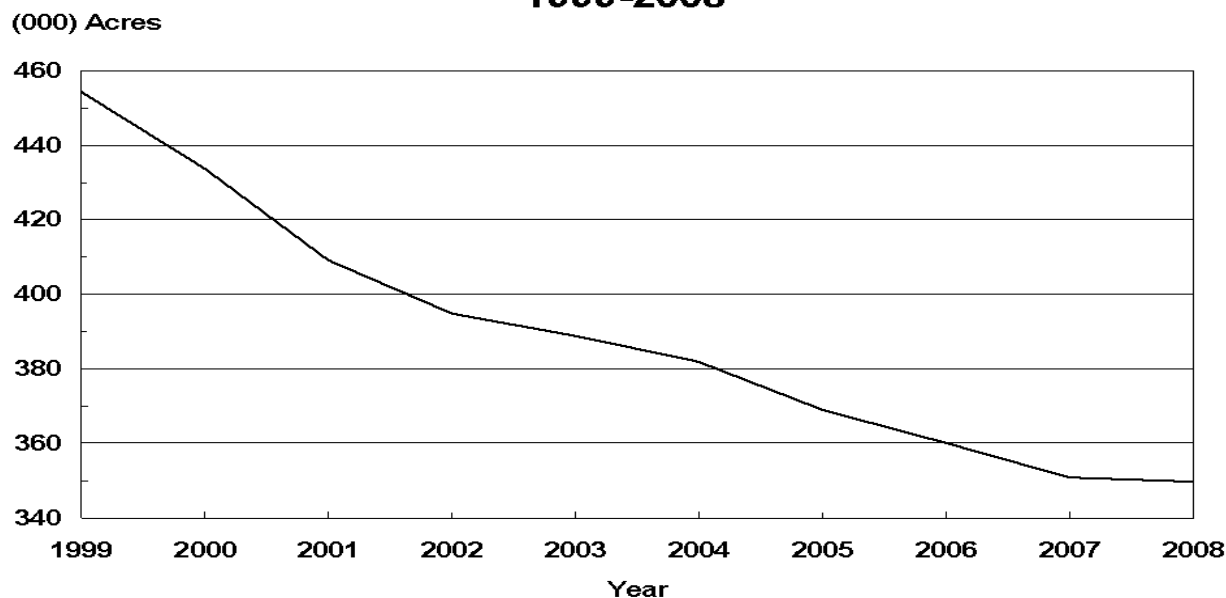
Use and State	Processed Utilization					
	Quantity			Price per Ton		
	2006	2007	2008	2006	2007	2008
	<i>Million Pounds</i>	<i>Million Pounds</i>	<i>Million Pounds</i>	<i>Dollars</i>	<i>Dollars</i>	<i>Dollars</i>
Frozen						
NY	50.0	50.0		181.00	282.00	
Oth Sts	221.8	207.7		164.00	228.00	
US	271.8	257.7		167.00	238.00	
Dried						
US	252.8	203.7		61.90	182.00	
Fresh Slices						
US	118.2	98.3		240.00	286.00	
Other ³						
NY	10.0	10.0		156.00	113.00	
Oth Sts	51.4	49.9		165.00	193.00	
US	61.4	59.9		163.00	189.00	

¹ Estimates for 2008 will be published on July 8, 2009.

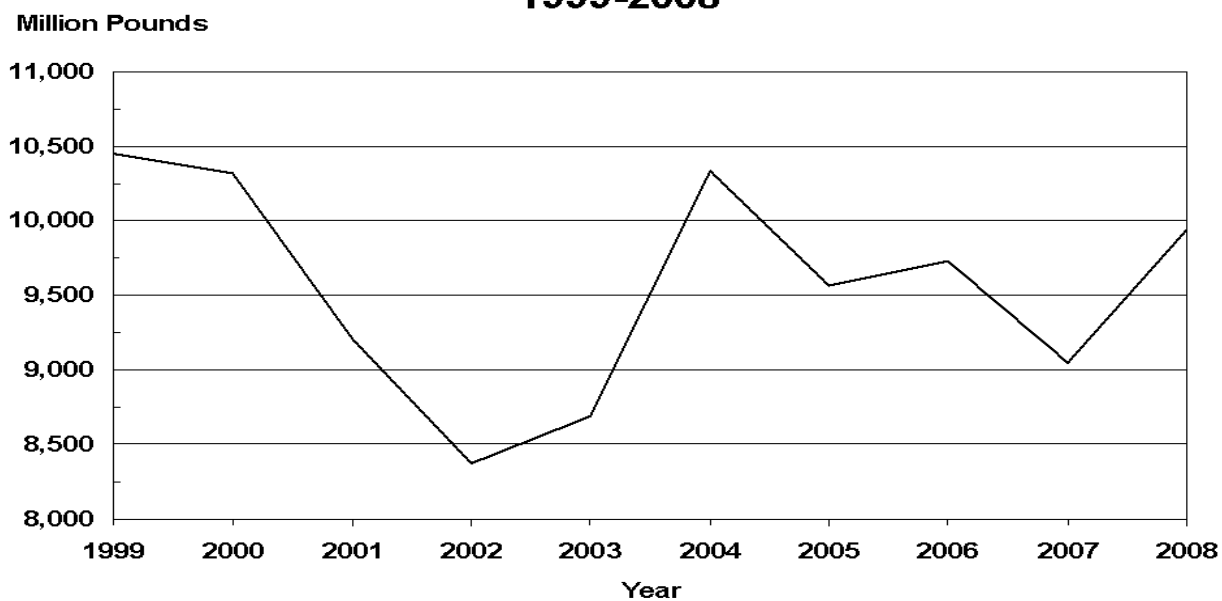
² 2007 data included in Other States to avoid disclosure of individual operations.

³ Includes vinegar, wine, and slices for pie making.

U.S. Apples Bearing Acres 1999-2008



U.S. Apples Utilized Production 1999-2008



**Miscellaneous Fruits: Bearing Acreage, Yield, Production, and Utilization
by State and United States, 2006-2008**

Crop, State, and Season	Bearing Acreage	Yield Per Acre ¹	Production		Utilization	
			Total	Utilized	Fresh	Processed
	<i>Acres</i>	<i>Tons</i>	<i>Tons</i>	<i>Tons</i>	<i>Tons</i>	<i>Tons</i>
Apricots ²						
CA						
2006	11,700	3.33	39,000	39,000	9,000	30,000
2007	11,300	7.17	81,000	81,000	23,000	58,000
2008	11,100	6.94	77,000	72,900	22,000	50,900
UT						
2006			280	255		
2007			260	260		
2008			410	380		
WA						
2006			5,200	5,200		
2007			7,200	7,200		
2008			4,100	4,100		
US						
2006	13,050	3.41	44,480	44,455	13,755	30,700
2007	12,650	6.99	88,460	88,460	29,270	59,190
2008	12,450	6.55	81,510	77,380	25,760	51,620
Avocados ³						
CA						
2006-07	65,000	2.03	132,000	132,000	132,000	
2007-08	66,000	2.42	160,000	160,000	160,000	
2008-09						
FL						
2006-07	6,500	2.15	14,000	14,000	14,000	
2007-08	7,000	3.93	27,500	27,500	27,500	
2008-09						
HI						
2006-07	330	1.55	510	510	510	
2007-08	350	1.66	580	580	580	
2008-09						
US						
2006-07	71,830	2.04	146,510	146,510	146,510	
2007-08	73,350	2.56	188,080	188,080	188,080	
2008-09						
Dates						
CA						
2006	5,500	3.22	17,700	17,700	17,700	
2007	5,300	3.08	16,300	16,300	16,300	
2008	5,300	3.34	17,700	17,700	17,700	

¹ Yield is based on total production.

² Missing data not published to avoid disclosure of individual operations.

³ Estimates for 2008-09 will be published on July 8, 2009.

**Miscellaneous Fruits: Price and Value by State
and United States, 2006-2008**

Crop, State, and Season	Price per Ton			Value of Production		
	Fresh	Processed	All	Fresh	Processed	Total
	<i>Dollars</i>	<i>Dollars</i>	<i>Dollars</i>	<i>1,000 Dollars</i>	<i>1,000 Dollars</i>	<i>1,000 Dollars</i>
Apricots ^{1 2}						
CA						
2006	1,510.00	321.00	593.00	13,590	9,538	23,128
2007	742.00	330.00	431.00	17,066	17,812	34,878
2008	775.00	353.00	472.00	17,050	17,354	34,404
UT						
2006			1,000.00			255
2007			815.00			212
2008			468.00			178
WA						
2006			1,190.00			6,180
2007			991.00			7,137
2008			1,610.00			6,601
US						
2006	1,450.00	314.00	665.00	19,965	9,598	29,563
2007	829.00	325.00	477.00	24,261	17,966	42,227
2008	918.00	351.00	532.00	23,653	17,530	41,183
Avocados ³						
CA						
2006-07	1,890.00		1,890.00	249,480		249,480
2007-08	1,970.00		1,970.00	315,200		315,200
2008-09						
FL						
2006-07	912.00		912.00	12,768		12,768
2007-08	440.00		440.00	12,100		12,100
2008-09						
HI						
2006-07	1,360.00		1,360.00	694		694
2007-08	1,360.00		1,360.00	789		789
2008-09						
US						
2006-07	1,800.00		1,800.00	262,942		262,942
2007-08	1,740.00		1,740.00	328,089		328,089
2008-09						
Dates						
CA						
2006	2,140.00		2,140.00	37,878		37,878
2007	2,290.00		2,290.00	37,327		37,327
2008	1,470.00		1,470.00	26,019		26,019

¹ Missing data not published to avoid disclosure of individual operations.

² Apricot processed price excludes dried. Processing value includes dried.

³ Estimates for 2008-09 will be published on July 8, 2009.

**Miscellaneous Fruits: Bearing Acreage, Yield, Production, and Utilization
by State and United States, 2006-2008 ¹**

Crop, State, and Season	Bearing Acreage	Yield Per Acre ²	Production		Utilization	
			Total	Utilized	Fresh	Processed
	<i>Acres</i>	<i>Tons</i>	<i>Tons</i>	<i>Tons</i>	<i>Tons</i>	<i>Tons</i>
Figs ³						
CA						
2006	10,300	4.16	42,800	42,800	3,800	39,000
2007	9,100	5.25	47,800	47,800	4,300	43,500
2008	9,400	4.26	40,000	40,000	4,000	36,000
Kiwifruit						
CA						
2006	4,200	6.21	26,100	25,400	23,400	2,000
2007	4,200	5.83	24,500	23,700	21,700	2,000
2008	4,200	4.83	20,300	19,300	17,700	1,600
Nectarines ⁴						
CA						
2006	33,000	6.61	218,000	218,000	218,000	
2007	31,000	8.68	269,000	269,000	269,000	
2008	31,000	9.29	288,000	288,000	288,000	
WA						
2006	1,400	9.93	13,900	13,900	13,900	
2007	1,400	10.00	14,000	14,000	14,000	
2008	1,300	4.23	5,500	5,500	5,500	
US						
2006	34,400	6.74	231,900	231,900	231,900	
2007	32,400	8.73	283,000	283,000	283,000	
2008	32,300	9.09	293,500	293,500	293,500	
Olives						
CA						
2006	31,000	0.76	23,500	23,500	500	23,000
2007	30,000	4.42	132,500	132,500	500	132,000
2008	30,000	2.23	66,800	66,800	500	66,300
Plums						
CA						
2006	31,000	5.10	158,000	158,000		
2007	29,500	5.15	152,000	152,000		
2008	29,500	5.22	154,000	154,000		

¹ Missing data not published to avoid disclosure of individual operations.

² Yield is based on total production.

³ Small quantities of canned figs are included in fresh to avoid disclosure of individual operations.

⁴ Small quantities of processed nectarines are included in fresh to avoid disclosure of individual operations.

**Miscellaneous Fruits: Price and Value by State
and United States, 2006-2008¹**

Crop, State, and Season	Price per Ton			Value of Production		
	Fresh	Processed	All	Fresh	Processed	Total
	<i>Dollars</i>	<i>Dollars</i>	<i>Dollars</i>	<i>1,000 Dollars</i>	<i>1,000 Dollars</i>	<i>1,000 Dollars</i>
Figs						
CA						
2006			426.00			18,253
2007			401.00			19,145
2008 ²						
Kiwifruit						
CA						
2006			911.00			23,148
2007			950.00			22,517
2008 ²						
Nectarines ³						
CA						
2006	517.00		517.00	112,706		112,706
2007	331.00		331.00	89,039		89,039
2008	365.00		365.00	105,120		105,120
WA						
2006	597.00		597.00	8,298		8,298
2007	519.00		519.00	7,266		7,266
2008	429.00		429.00	2,360		2,360
US						
2006	522.00		522.00	121,004		121,004
2007	340.00		340.00	96,305		96,305
2008	366.00		366.00	107,480		107,480
Olives						
CA						
2006	500.00	777.00	771.00	250	17,869	18,119
2007	500.00	655.00	654.00	250	86,444	86,694
2008	500.00	769.00	767.00	250	51,003	51,253
Plums						
CA						
2006			688.00			108,648
2007			665.00			101,077
2008			356.00			54,824

¹ Missing data not published to avoid disclosure of individual operations.

² Estimates for 2008 will be published on July 8, 2009.

³ Small quantities of processed nectarines are included in fresh to avoid disclosure of individual operations.

**Miscellaneous Fruits: Bearing Acreage, Yield, Production, and Utilization
by State and 4-State Total, 2006-2008 ¹**

Crop, State, and Year	Bearing Acreage	Yield Per Acre ²	Production		Utilization	
			Total	Utilized	Fresh	Processed
	<i>Acres</i>	<i>Tons</i>	<i>Tons</i>	<i>Tons</i>	<i>Tons</i>	<i>Tons</i>
Prunes & Plums						
ID						
2006	480	4.17	2,000	1,900		
2007	490	3.67	1,800	1,720		
2008	490	4.49	2,200	2,180		
MI						
2006	750	4.80	3,600	3,400	1,800	1,600
2007	750	4.13	3,100	2,000	900	1,100
2008	650	3.54	2,300	2,300	700	1,600
OR						
2006	1,500	7.00	10,500	8,500	2,500	6,000
2007	1,500	2.00	3,000	3,000	1,800	1,200
2008	1,500	5.00	7,500	7,500	3,500	4,000
WA						
2006	650	8.31	5,400	5,400		
2007	600	7.00	4,200	4,200		
2008	600	6.00	3,600	3,600		
4-State Total						
2006	3,380	6.36	21,500	19,200	9,550	9,650
2007	3,340	3.62	12,100	10,920	6,420	4,500
2008	3,240	4.81	15,600	15,580	8,700	6,880
Prunes (Dried Basis)						
CA						
2006	65,000	3.05	198,000	189,000		189,000
2007	64,000	1.30	83,000	81,000		81,000
2008	64,000	1.97	126,000	126,000		126,000

¹ Missing data not published to avoid disclosure of individual operations.

² Yield is based on total production.

**Miscellaneous Fruits: Price and Value by State
and 4-State Total, 2006-2008¹**

Crop, State, and Year	Price per Ton			Value of Production		
	Fresh	Processed	All	Fresh	Processed	Total
	<i>Dollars</i>	<i>Dollars</i>	<i>Dollars</i>	<i>1,000 Dollars</i>	<i>1,000 Dollars</i>	<i>1,000 Dollars</i>
Prunes & Plums						
ID						
2006			887.00			1,686
2007			709.00			1,219
2008			585.00			1,275
MI						
2006	730.00	249.00	504.00	1,314	399	1,713
2007	765.00	173.00	440.00	689	190	879
2008	775.00	174.00	357.00	543	278	821
OR						
2006	496.00	274.00	339.00	1,240	1,645	2,885
2007	501.00	302.00	421.00	902	362	1,264
2008	407.00	165.00	278.00	1,425	658	2,083
WA						
2006			443.00			2,394
2007			380.00			1,594
2008			485.00			1,747
4-State Total						
2006	639.00	267.00	452.00	6,105	2,573	8,678
2007	622.00	213.00	454.00	3,996	960	4,956
2008	547.00	170.00	380.00	4,758	1,168	5,926
Prunes (Dried Basis)						
CA						
2006		1,390.00	1,390.00		262,710	262,710
2007		1,450.00	1,450.00		117,450	117,450
2008		1,520.00	1,520.00		191,520	191,520

¹ Missing data not published to avoid disclosure of individual operations.

**Miscellaneous Fruits: Processed Utilization, Use, and Price
by State and United States, 2006-2008**

Crop, Use, and State	Processed Utilization					
	Quantity			Price per Ton		
	2006	2007	2008	2006	2007	2008
	<i>Tons</i>	<i>Tons</i>	<i>Tons</i>	<i>Dollars</i>	<i>Dollars</i>	<i>Dollars</i>
Apricots						
Canned						
CA	14,900	24,000	22,000	359.00	362.00	389.00
Dried (Fresh Basis)						
CA	5,500	13,000	14,000	303.00	229.00	309.00
Figs ¹						
Dried (Fresh Basis)						
CA	39,000	43,500	36,000	276.00	291.00	
Olives						
Canned						
CA	17,000	96,000	45,000	926.00	700.00	767.00
Crushed for Oil						
CA	4,000	12,000	14,000	405.00	775.00	940.00
Limited						
CA	1,500	20,000	6,000	335.00	496.00	552.00
Undersized						
CA	500	4,000	1,300	7.00	6.00	12.00
Prunes & Plums						
Canned						
4-State Total	3,250	2,550	2,130	277.00	217.00	182.00
Frozen						
4-State Total	2,100	650	1,110	213.00	200.00	207.00
Dried & Other						
4-State Total	4,300	1,300	3,640	285.00	213.00	151.00

¹ Price estimates for 2008 will be published on July 8, 2009.

**Olives: Variety and Total Production, California
2006-2008**

Variety	Total Production		
	2006	2007	2008
	<i>Tons</i>	<i>Tons</i>	<i>Tons</i>
Manzanillo	16,000	112,000	54,000
Sevillano	5,500	14,000	9,500
All Other ¹	2,000	6,500	3,300
Total	23,500	132,500	66,800

¹ Includes production for varieties that were or will be used for canned, oil, and other specialty products.

California Dry Fruits: Production, Use, and Price, 2006-2008

Crop	Quantity			Price per Ton		
	2006	2007	2008	2006	2007	2008
	<i>Tons</i>	<i>Tons</i>	<i>Tons</i>	<i>Dollars</i>	<i>Dollars</i>	<i>Dollars</i>
Fresh Basis						
Apricots	5,500	13,000	14,000	303.00	229.00	309.00
Figs ¹	39,000	43,500	36,000	276.00	291.00	
Grapes						
Raisin	1,394,000	1,593,000	1,661,000	233.00	231.00	216.00
Table	30,000	28,000	43,000	232.00	236.00	243.00
Peaches						
Freestone	13,100	12,700	9,500	79.00	57.00	50.00
Prunes	604,800	234,900	359,000	434.00	500.00	533.00
Dried Basis						
Apricots ²	640	1,970	1,830	2,600.00	1,510.00	2,364.00
Figs ^{1 3}						
Standard	11,100	11,100	11,000	960.00	1,120.00	
Sub-Std.	1,900	3,400	1,000	60.00	60.00	
All Dried	13,000	14,500	12,000	829.00	873.00	
Grapes						
Raisin ^{4 5}	303,000	354,000	339,000	1,070.00	1,040.00	1,060.00
Table ⁶	6,500	6,000	8,700	1,070.00	1,100.00	1,200.00
Peaches ⁷						
Freestone	1,290	1,365	1,050	802.00	530.00	452.00
Prunes ⁸	189,000	81,000	126,000	1,390.00	1,450.00	1,520.00

¹ Price estimates for 2008 will be published on July 8, 2009.

² Dried basis 1 ton of apricots equivalent to 8.59 tons for 2006, 6.60 tons for 2007, and 7.65 tons for 2008.

³ Dried basis 1 ton of all figs equivalent to 3.00 tons for 2006, 2007, and 2008.

⁴ Includes substandard raisins diverted to other uses.

⁵ Dried basis 1 ton of raisins equivalent to 4.60 tons for 2006, 4.50 tons for 2007, and 4.90 tons for 2008.

⁶ Dried basis 1 ton of table type raisins equivalent to 4.62 tons for 2006, 4.67 tons for 2007, and 4.94 tons for 2008.

⁷ Dried basis 1 ton of Freestone peaches equivalent to 10.16 tons for 2006, 9.30 tons for 2007, and 9.05 tons for 2008.

⁸ Dried basis 1 ton of dried prunes equivalent to 3.20 tons for 2006, 2.90 tons for 2007, and 2.85 tons for 2008.

**Strawberries for Fresh Market and Processing: Area Planted and Harvested,
Yield, Production, Price, and Value by State and United States, 2006-2008**

State	Area Planted			Area Harvested		
	2006	2007	2008	2006	2007	2008
	<i>Acres</i>	<i>Acres</i>	<i>Acres</i>	<i>Acres</i>	<i>Acres</i>	<i>Acres</i>
CA	35,800	35,500	37,600	35,800	35,500	37,600
FL	7,400	6,600	6,900	7,300	6,600	6,900
MI	1,000	1,000	950	850	850	800
NY	1,700	1,600	1,600	1,500	1,400	1,400
NC	1,700	1,700	1,700	1,600	1,500	1,600
OH	1,100	1,100	1,100	750	780	770
OR	2,400	2,200	2,100	2,100	1,900	1,800
PA	1,300	1,200	1,200	1,200	1,200	1,200
WA	1,600	1,600	1,600	1,600	1,600	1,600
WI	930	900	910	760	850	800
US	54,930	53,400	55,660	53,460	52,180	54,470
	Yield per Acre			Production		
	2006	2007	2008	2006	2007	2008
	<i>Cwt</i>	<i>Cwt</i>	<i>Cwt</i>	<i>1,000 Cwt</i>	<i>1,000 Cwt</i>	<i>1,000 Cwt</i>
CA	590	605	605	21,163	21,540	22,675
FL	280	320	260	2,044	2,112	1,794
MI	65	51	61	55	43	49
NY	29	33	32	44	46	45
NC	135	125	130	216	189	208
OH	57	49	55	43	38	42
OR	110	130	130	230	247	238
PA	57	47	61	68	56	73
WA	80	84	90	128	134	144
WI	62	56	61	47	48	49
US	450	469	465	24,038	24,453	25,317
	Value					
	Per Cwt			Total		
	2006	2007	2008	2006	2007	2008
	<i>Dollars</i>	<i>Dollars</i>	<i>Dollars</i>	<i>1,000 Dollars</i>	<i>1,000 Dollars</i>	<i>1,000 Dollars</i>
CA	56.70	65.50	68.10	1,199,341	1,410,652	1,544,686
FL	117.00	124.00	139.00	239,148	261,888	249,366
MI	114.00	117.00	119.00	6,285	5,028	5,846
NY	170.00	165.00	165.00	7,480	7,590	7,425
NC	90.00	95.00	100.00	19,440	17,955	20,800
OH	152.00	154.00	174.00	6,536	5,852	7,308
OR	69.10	66.30	70.50	15,882	16,378	16,768
PA	167.00	187.00	211.00	11,356	10,472	15,403
WA	60.40	65.40	70.10	7,728	8,765	10,092
WI	134.00	136.00	145.00	6,298	6,528	7,105
US	63.20	71.60	74.40	1,519,494	1,751,108	1,884,799

**Strawberries for Fresh Market and Processing: Production, Price, and Value
by Utilization, State, and United States, 2006-2008**

Utilization and State	Production					
	2006		2007		2008	
	<i>1,000 Cwt</i>		<i>1,000 Cwt</i>		<i>1,000 Cwt</i>	
Fresh Market						
CA	16,542		17,159		18,605	
FL	2,044		2,112		1,794	
MI	52		41		47	
NY	44		46		45	
NC	216		189		208	
OH	43		38		42	
OR	36		27		26	
PA	68		56		73	
WA	17		17		22	
WI	47		48		49	
US	19,109		19,733		20,911	
Processing						
CA	4,621		4,381		4,070	
MI	3		2		2	
OR	194		220		212	
WA	111		117		122	
US	4,929		4,720		4,406	
	Value					
	Per Unit			Total		
	2006	2007	2008	2006	2007	2008
	<i>Dollars Per Cwt</i>	<i>Dollars Per Cwt</i>	<i>Dollars Per Cwt</i>	<i>1,000 Dollars</i>	<i>1,000 Dollars</i>	<i>1,000 Dollars</i>
Fresh Market						
CA	65.10	75.70	75.50	1,076,884	1,298,936	1,404,678
FL	117.00	124.00	139.00	239,148	261,888	249,366
MI	118.00	120.00	122.00	6,136	4,920	5,734
NY	170.00	165.00	165.00	7,480	7,590	7,425
NC	90.00	95.00	100.00	19,440	17,955	20,800
OH	152.00	154.00	174.00	6,536	5,852	7,308
OR	134.00	134.00	172.00	4,824	3,618	4,472
PA	167.00	187.00	211.00	11,356	10,472	15,403
WA	91.50	146.00	172.00	1,556	2,482	3,784
WI	134.00	136.00	145.00	6,298	6,528	7,105
US	72.20	82.10	82.50	1,379,658	1,620,241	1,726,075
Processing						
CA	26.50	25.50	34.40	122,457	111,716	140,008
MI	49.50	54.00	56.00	149	108	112
OR	57.00	58.00	58.00	11,058	12,760	12,296
WA	55.60	53.70	51.70	6,172	6,283	6,308
US	28.40	27.70	36.00	139,836	130,867	158,724

**Berries: Harvested Acreage, Yield, Production, and Utilization
by Crop, State, and United States, 2006-2008**

Crop, State, and Year	Area Harvested	Yield Per Acre ¹	Production		Utilization	
			Total	Utilized	Fresh	Processed
	<i>Acres</i>	<i>Pounds</i>	<i>1,000 Pounds</i>	<i>1,000 Pounds</i>	<i>1,000 Pounds</i>	<i>1,000 Pounds</i>
Cultivated						
Blueberries						
AL ²						
2006	290	1,210	470	350	350	
2007	270	1,520	460	410	410	
2008	320	1,130	400	360	360	
AR ²						
2006	530	3,020	1,650	1,600	1,600	
2007	270	259	70	70	70	
2008	300	2,670	800	800	800	
CA						
2006 ²	2,000	5,000	10,000	10,000	10,000	
2007	2,300	7,170	16,500	16,500	14,500	2,000
2008	2,500	5,600	14,000	14,000	12,500	1,500
FL ²						
2006	2,600	2,690	7,040	7,000	7,000	
2007	2,600	3,000	7,800	7,800	7,800	
2008	3,000	3,270	9,800	9,800	9,800	
GA						
2006	7,000	4,500	31,500	31,500	16,000	15,500
2007	4,800	2,290	11,000	11,000	9,000	2,000
2008	9,500	4,320	41,000	41,000	24,000	17,000
IN						
2006	620	5,480	3,400	3,400	1,900	1,500
2007	580	2,410	1,600	1,400	800	600
2008	660	5,760	3,800	3,800	2,200	1,600
MI						
2006	18,100	4,970	90,000	90,000	29,000	61,000
2007	18,500	5,030	93,000	93,000	30,000	63,000
2008	18,600	5,910	110,000	110,000	40,000	70,000
MS						
2006	2,000	2,300	4,600	4,600	2,600	2,000
2007	2,200	4,320	9,500	9,500	5,000	4,500
2008	2,700	1,480	4,000	4,000	2,600	1,400
NJ						
2006	7,600	6,840	52,000	52,000	40,000	12,000
2007	7,600	7,110	54,000	54,000	41,000	13,000
2008	7,600	7,760	59,000	59,000	46,000	13,000
NY						
2006	900	2,220	2,200	2,000	1,950	50
2007	900	2,560	2,500	2,300	2,250	50
2008	900	2,560	2,500	2,300	2,200	100
NC						
2006	4,900	5,430	26,600	26,600	18,600	8,000
2007	4,700	3,450	16,200	16,200	11,000	5,200
2008	4,800	5,940	28,500	28,500	20,000	8,500
OR						
2006	4,500	7,910	35,600	35,600	13,900	21,700
2007	5,000	9,000	45,000	45,000	16,800	28,200
2008	5,200	8,290	43,100	43,100	19,400	23,700
WA						
2006	3,400	5,590	19,000	19,000	4,500	14,500
2007	3,700	8,000	29,600	29,600	11,200	18,400
2008	4,100	7,800	32,000	32,000	12,000	20,000
US						
2006	54,440	5,210	284,060	283,650	146,860	136,790
2007	53,420	5,370	287,230	286,780	149,830	136,950
2008	60,180	5,790	348,900	348,660	191,860	156,800

¹ Yield is based on utilized production.

² Small quantities of processed blueberries are included in fresh to avoid disclosure of individual operations.

**Berries: Price and Value by Crop, State,
and United States, 2006-2008**

Crop, State and Year	Price per Pound			Value of Production		
	Fresh	Processed	All	Fresh	Processed	Total
	<i>Dollars</i>	<i>Dollars</i>	<i>Dollars</i>	<i>1,000 Dollars</i>	<i>1,000 Dollars</i>	<i>1,000 Dollars</i>
Cultivated Blueberries						
AL ¹						
2006	1.380		1.380	483		483
2007	1.590		1.590	652		652
2008	1.330		1.330	479		479
AR ¹						
2006	1.550		1.550	2,486		2,486
2007	1.640		1.640	115		115
2008	1.610		1.610	1,288		1,288
CA						
2006 ¹	2.320		2.320	23,156		23,156
2007	1.950	0.970	1.830	30,215	1,940	30,215
2008	3.900	1.080	3.600	48,750	1,620	50,370
FL ¹						
2006	4.700		4.700	32,900		32,900
2007	5.000		5.000	39,000		39,000
2008	5.300		5.300	51,940		51,940
GA						
2006	2.370	1.410	1.900	37,920	21,855	59,775
2007	3.100	1.420	2.790	27,900	2,840	30,740
2008	2.230	0.980	1.710	53,520	16,660	70,180
IN						
2006	1.600	1.320	1.480	3,040	1,980	5,020
2007	2.200	1.550	1.920	1,760	930	2,690
2008	2.000	0.890	1.530	4,400	1,424	5,824
MI						
2006	2.150	1.430	1.660	62,350	87,305	149,655
2007	2.050	1.650	1.780	61,500	103,956	165,456
2008	1.700	0.800	1.130	68,000	56,000	124,000
MS						
2006	1.400	1.200	1.310	3,640	2,400	6,040
2007	2.100	1.500	1.820	10,500	6,750	17,250
2008	2.400	1.200	1.980	6,240	1,680	7,920
NJ						
2006	1.640	1.510	1.610	65,600	18,120	83,720
2007	1.700	1.580	1.670	69,700	20,540	90,240
2008	1.480	1.070	1.390	68,080	13,910	81,990
NY						
2006	1.410	0.920	1.400	2,750	46	2,796
2007	1.470	1.300	1.470	3,308	65	3,373
2008	1.820	1.030	1.790	4,004	103	4,107
NC						
2006	2.150	1.350	1.910	39,990	10,800	50,790
2007	2.400	1.500	2.110	26,400	7,800	34,200
2008	2.100	0.700	1.680	42,000	5,950	47,950
OR						
2006	1.790	1.300	1.490	24,881	28,210	53,091
2007	1.600	1.440	1.500	26,880	40,608	67,488
2008	1.440	0.900	1.140	27,936	21,330	49,266
WA						
2006	2.380	1.340	1.590	10,710	19,430	30,140
2007	2.150	1.390	1.680	24,080	25,576	49,656
2008	2.280	0.800	1.360	27,360	16,000	43,360
US						
2006	2.110	1.390	1.760	309,308	190,744	500,052
2007	2.140	1.540	1.850	320,070	211,005	531,075
2008	2.110	0.859	1.540	403,997	134,677	538,674

¹ Small quantities of processed blueberries are included in fresh to avoid disclosure of individual operations.

**Berries: Harvested Acreage, Yield, Production, and Utilization
by Crop, State, and United States, 2006-2008**

Crop, State, and Year	Area Harvested	Yield Per Acre ¹	Production		Utilization	
			Total	Utilized	Fresh	Processed
	<i>Acres</i>	<i>Pounds</i>	<i>1,000 Pounds</i>	<i>1,000 Pounds</i>	<i>1,000 Pounds</i>	<i>1,000 Pounds</i>
Wild						
Blueberries						
ME						
2006			74,600	74,600	400	74,200
2007			77,250	77,250	450	76,800
2008			89,950	89,950	550	89,400
Boysenberries						
CA ²						
2006	110	11,300	1,240	1,240		
2007	110	10,600	1,170	1,170		
2008	70	8,000	560	560		
OR						
2006	600	3,830	2,400	2,300	100	2,200
2007	700	5,570	4,400	3,900	100	3,800
2008	700	3,170	2,360	2,220	220	2,000
US ²						
2006	710	4,990	3,640	3,540		
2007	810	6,260	5,570	5,070		
2008	770	3,610	2,920	2,780		
Loganberries						
OR						
2006	60	2,000	125	120	10	110
2007	40	2,250	90	90	10	80
2008 ³	30	2,000	60	60		
Black						
Raspberries						
OR						
2006	1,500	2,670	4,010	4,010	10	4,000
2007	1,400	2,610	3,700	3,650	50	3,600
2008 ³	1,500	1,880	2,820	2,820		
Red						
Raspberries						
OR						
2006	1,900	3,240	6,200	6,150	950	5,200
2007	1,700	2,940	5,000	5,000	900	4,100
2008	1,500	3,270	4,910	4,910	910	4,000
WA						
2006	9,600	6,000	57,600	57,600	850	56,750
2007	9,500	5,800	55,100	55,100	550	54,550
2008	9,600	5,730	55,000	55,000	550	54,450
US						
2006	11,500	5,540	63,800	63,750	1,800	61,950
2007	11,200	5,370	60,100	60,100	1,450	58,650
2008	11,100	5,400	59,910	59,910	1,460	58,450
All						
Raspberries						
CA ²						
2006	3,600	27,000	97,200	97,200		
2007	3,500	22,500	78,750	78,750		
2008	3,400	17,000	57,800	57,800		

¹ Yield is based on utilized production.

² No breakdown of utilization available.

³ Missing data not published to avoid disclosure of individual operations.

**Berries: Price and Value by Crop, State,
and United States, 2006-2008**

Crop, State, and Year	Price per Pound			Value of Production		
	Fresh	Processed	All	Fresh	Processed	Total
	<i>Dollars</i>	<i>Dollars</i>	<i>Dollars</i>	<i>1,000 Dollars</i>	<i>1,000 Dollars</i>	<i>1,000 Dollars</i>
Wild						
Blueberries						
ME						
2006	1.700	0.800	0.805	680	59,360	60,040
2007	1.900	1.070	1.070	855	82,176	83,031
2008	1.940	0.600	0.608	1,067	53,640	54,707
Boysenberries						
CA ¹						
2006			1.070			1,323
2007			0.722			845
2008			0.725			406
OR						
2006	1.580	1.410	1.420	158	3,102	3,260
2007	1.540	0.540	0.566	154	2,052	2,206
2008	1.080	0.690	0.729	238	1,380	1,618
US ¹						
2006			1.290			4,583
2007			0.602			3,051
2008			0.728			2,024
Loganberries						
OR						
2006	1.320	0.791	0.833	13	87	100
2007	1.620	0.900	0.978	16	72	88
2008 ²			1.050			63
Black						
Raspberries						
OR						
2006	1.980	2.440	2.440	20	9,760	9,780
2007	1.810	0.970	0.982	91	3,492	3,583
2008 ²			1.870			5,260
Red						
Raspberries						
OR						
2006	1.730	0.610	0.783	1,644	3,172	4,816
2007	1.510	0.750	0.887	1,359	3,075	4,434
2008	1.870	1.530	1.590	1,702	6,120	7,822
WA						
2006	2.120	0.330	0.356	1,802	18,728	20,530
2007	1.110	0.500	0.506	611	27,275	27,886
2008	2.110	1.670	1.670	1,161	90,932	92,093
US						
2006	1.910	0.354	0.398	3,446	21,900	25,346
2007	1.360	0.517	0.538	1,970	30,350	32,320
2008	1.960	1.660	1.670	2,863	97,052	99,915
All						
Raspberries						
CA ¹						
2006			2.150			208,980
2007			2.880			226,800
2008			3.100			179,180

¹ No breakdown of utilization available.

² Missing data not published to avoid disclosure of individual operations.

Oregon Blackberries: Harvested Acreage, Yield, Production, and Utilization by Variety, 2006-2008

Variety and Year	Area Harvested	Yield Per Acre ¹	Production		Utilization	
			Total	Utilized	Fresh	Processed
	<i>Acres</i>	<i>Pounds</i>	<i>1,000 Pounds</i>	<i>1,000 Pounds</i>	<i>1,000 Pounds</i>	<i>1,000 Pounds</i>
Cultivated Blackberries (OR)						
Marion						
2006	4,500	5,090	22,900	22,900	900	22,000
2007	4,400	6,660	32,300	29,300	300	29,000
2008	4,000	4,550	19,000	18,200	200	18,000
Evergreen						
2006	800	6,000	4,800	4,800	200	4,600
2007	600	10,500	6,300	6,300	400	5,900
2008	500	7,400	3,700	3,700	300	3,400
Other						
2006	1,600	9,190	14,900	14,700	1,600	13,100
2007	1,700	13,700	25,300	23,300	2,000	21,300
2008	1,800	8,890	16,500	16,000	1,900	14,100
All						
2006	6,900	6,140	42,600	42,400	2,700	39,700
2007	6,700	8,790	63,900	58,900	2,700	56,200
2008	6,300	6,020	39,200	37,900	2,400	35,500

¹ Yield is based on utilized production.

**Oregon Blackberries: Price and Value
by Variety, 2006-2008**

Variety and Year	Price per Pound			Value of Production		
	Fresh	Processed	All	Fresh	Processed	Total
	<i>Dollars</i>	<i>Dollars</i>	<i>Dollars</i>	<i>1,000 Dollars</i>	<i>1,000 Dollars</i>	<i>1,000 Dollars</i>
Cultivated Blackberries (OR)						
Marion						
2006	1.740	0.800	0.837	1,566	17,600	19,166
2007	1.330	0.490	0.499	399	14,210	14,609
2008	1.440	0.580	0.589	288	10,440	10,728
Evergreen						
2006	1.800	0.690	0.736	360	3,174	3,534
2007	1.490	0.340	0.413	596	2,006	2,602
2008	1.860	0.430	0.546	558	1,462	2,020
Other						
2006	1.310	0.870	0.918	2,096	11,397	13,493
2007	1.220	0.420	0.489	2,440	8,946	11,386
2008	1.580	0.510	0.637	3,002	7,191	10,193
All						
2006	1.490	0.810	0.854	4,022	32,171	36,193
2007	1.270	0.448	0.486	3,435	25,162	28,597
2008	1.600	0.538	0.605	3,848	19,093	22,941

**Sweet Cherries: Bearing Acreage, Yield, Production, and Utilization
by State and United States, 2006-2008 ¹**

State and Year	Bearing Acreage	Yield Per Acre ²	Production		Utilization	
			Total	Utilized	Fresh	Processed
	<i>Acres</i>	<i>Tons</i>	<i>Tons</i>	<i>Tons</i>	<i>Tons</i>	<i>Tons</i>
CA						
2006	26,000	1.62	42,100	40,200	32,400	7,800
2007	26,000	3.27	85,000	81,800	67,400	14,400
2008	27,000	3.19	86,000	82,800	67,400	15,400
ID						
2006	900	4.22	3,800	3,530		
2007	900	1.67	1,500	1,500		
2008	1,000	1.90	1,900	1,800		
MI						
2006	7,700	2.60	20,000	20,000	1,000	19,000
2007	7,300	3.74	27,300	27,300	800	26,500
2008	7,200	3.68	26,500	26,300	1,200	25,100
MT						
2006	750	3.20	2,400	580		
2007	720	3.39	2,440	2,180		
2008	710	2.20	1,560	1,450		
NY						
2006	700	1.37	960	860		
2007	700	1.70	1,190	1,180		
2008	700	1.50	1,050	920		
OR						
2006	12,000	4.59	55,100	52,600	29,600	23,000
2007	12,500	2.80	35,000	34,000	20,500	13,500
2008	12,500	2.40	30,000	26,400	17,200	9,200
UT						
2006	550	3.27	1,800	1,750	910	840
2007	550	2.27	1,250	1,250	900	350
2008	500	0.10	50	50	50	
WA						
2006	32,000	5.25	168,000	168,000	123,000	45,000
2007	33,000	4.76	157,000	157,000	129,000	28,000
2008	33,000	3.03	100,000	100,000	85,000	15,000
US						
2006	80,600	3.65	294,160	287,520	190,770	96,750
2007	81,670	3.80	310,680	306,210	222,560	83,650
2008	82,610	2.99	247,060	239,720	174,620	65,100

¹ Missing data not published to avoid disclosure of individual operations.

² Yield is based on total production.

**Sweet Cherries: Price and Value by State
and United States, 2006-2008¹**

State and Year	Price per Ton			Value of Production		
	Fresh	Processed	All	Fresh	Processed	All
	<i>Dollars</i>	<i>Dollars</i>	<i>Dollars</i>	<i>1,000 Dollars</i>	<i>1,000 Dollars</i>	<i>1,000 Dollars</i>
CA						
2006	3,740.00	412.00	3,090.00	121,176	3,215	124,391
2007	2,250.00	234.00	1,900.00	151,650	3,366	155,016
2008	2,840.00	202.00	2,350.00	191,416	3,118	194,534
ID						
2006			1,110.00			3,922
2007			2,100.00			3,146
2008			3,120.00			5,622
MI						
2006	2,750.00	671.00	775.00	2,750	12,742	15,492
2007	2,060.00	606.00	649.00	1,648	16,061	17,709
2008	2,620.00	479.00	576.00	3,144	12,015	15,159
MT						
2006			1,850.00			1,071
2007			1,630.00			3,561
2008			2,730.00			3,958
NY						
2006			2,290.00			1,973
2007			2,980.00			3,518
2008			3,520.00			3,241
OR						
2006	1,048.00	733.00	910.00	31,021	16,862	47,883
2007	1,892.00	776.00	1,450.00	38,786	10,470	49,256
2008	2,690.00	969.00	2,090.00	46,268	8,916	55,184
UT						
2006	2,320.00	700.00	1,540.00	2,111	588	2,699
2007	1,680.00	600.00	1,380.00	1,512	210	1,722
2008	2,430.00		2,440.00	122		122
WA						
2006	1,970.00	566.00	1,590.00	242,310	25,484	267,794
2007	2,400.00	483.00	2,060.00	309,600	13,528	323,128
2008	3,350.00	546.00	2,930.00	284,750	8,186	292,936
US						
2006	2,130.00	616.00	1,620.00	405,637	59,588	465,225
2007	2,310.00	527.00	1,820.00	512,968	44,088	557,056
2008	3,080.00	499.00	2,380.00	538,278	32,478	570,756

¹ Missing data not published to avoid disclosure of individual operations.

**Tart Cherries: Bearing Acreage, Yield, Production, and Utilization
by State and United States, 2006-2008 ¹**

State and Year	Bearing Acreage	Yield Per Acre ²	Production		Utilization	
			Total	Utilized	Fresh	Processed
	<i>Acres</i>	<i>Pounds</i>	<i>Million Pounds</i>	<i>Million Pounds</i>	<i>Million Pounds</i>	<i>Million Pounds</i>
MI						
2006	26,400	7,200	190.0	180.3	0.5	179.8
2007	26,100	7,510	196.0	193.0	0.5	192.5
2008	25,900	6,370	165.0	165.0	0.5	164.5
NY						
2006	1,800	4,780	8.6	8.6		
2007	1,600	7,060	11.3	11.3		
2008	1,600	6,000	9.6	9.4		
OR						
2006	750	4,530	3.4	3.4		
2007	650	769	0.5	0.5		
2008	650	4,310	2.8	2.8		
PA						
2006	700	7,430	5.2	5.2		
2007	600	5,830	3.5	3.5		
2008	600	6,500	3.9	3.9		
UT						
2006	2,800	10,000	28.0	25.0		25.0
2007	2,800	7,140	20.0	19.0		19.0
2008	2,900	6,900	20.0	19.0		19.0
WA						
2006	1,400	15,900	22.3	21.7		
2007	1,300	8,850	11.5	11.4		
2008	1,300	9,620	12.5	12.5		
WI						
2006	1,700	2,650	4.5	4.4		4.4
2007	1,700	6,120	10.4	10.0	0.2	9.8
2008	1,700	353	0.6	0.6		0.6
US						
2006	35,550	7,370	262.0	248.6	1.4	247.2
2007	34,750	7,290	253.2	248.7	1.6	247.1
2008	34,650	6,190	214.4	213.2	1.0	212.2

¹ Missing data not published to avoid disclosure of individual operations.

² Yield is based on total production.

**Tart Cherries: Price and Value by State
and United States, 2006-2008¹**

State and Year	Price per Pound			Value of Production		
	Fresh	Processed	All	Fresh	Processed	All
	<i>Dollars</i>	<i>Dollars</i>	<i>Dollars</i>	<i>1,000 Dollars</i>	<i>1,000 Dollars</i>	<i>1,000 Dollars</i>
MI						
2006	0.850	0.191	0.192	425	34,272	34,697
2007	0.950	0.262	0.264	475	50,430	50,905
2008	1.100	0.390	0.393	550	64,235	64,785
NY						
2006			0.317			2,725
2007			0.343			3,871
2008			0.413			3,879
OR						
2006			0.276			938
2007			0.346			173
2008			0.419			1,172
PA						
2006			0.283			1,474
2007			0.398			1,392
2008			0.425			1,658
UT						
2006		0.265	0.265		6,625	6,625
2007		0.250	0.250		4,750	4,750
2008		0.330	0.330		6,270	6,270
WA						
2006			0.259			5,630
2007			0.350			3,990
2008			0.330			4,125
WI						
2006		0.310	0.310		1,365	1,365
2007	0.490	0.280	0.284	98	2,744	2,842
2008		0.350	0.350		210	210
US						
2006	0.990	0.211	0.215	1,392	52,062	53,454
2007	1.050	0.268	0.273	1,679	66,244	67,923
2008	1.390	0.380	0.385	1,388	80,711	82,099

¹ Missing data not published to avoid disclosure of individual operations.

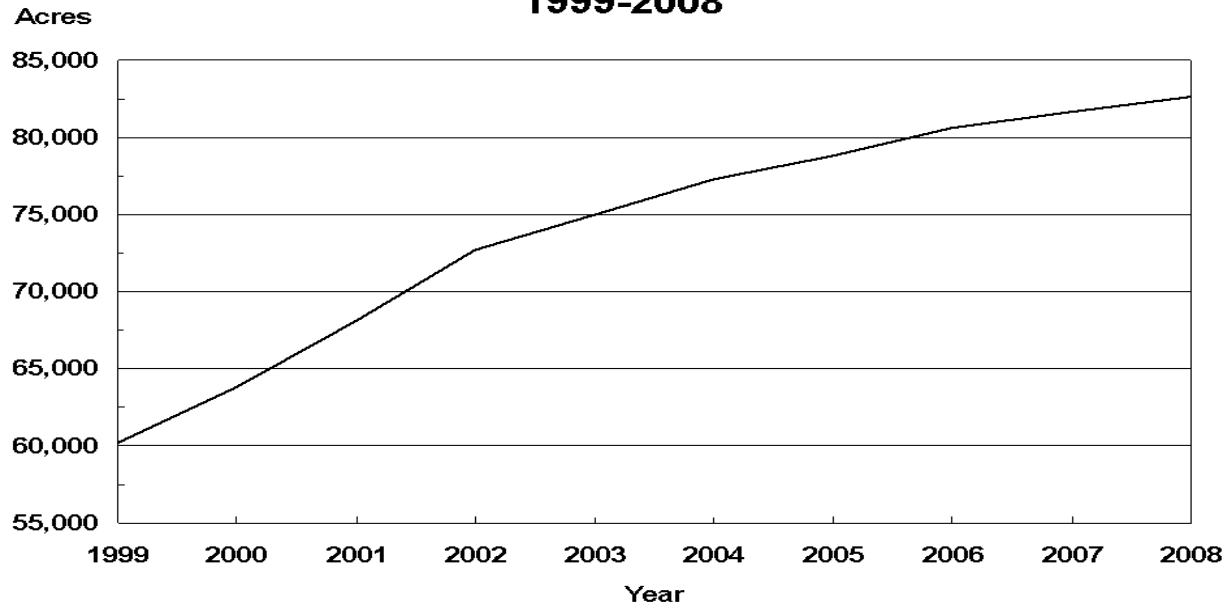
**Sweet and Tart Cherries: Processed Utilization, Use,
and Price by State and United States, 2006-2008**

Crop, Use, and State	Processed Utilization					
	Quantity			Price per Unit		
	2006	2007	2008	2006	2007	2008
	<i>Tons</i>	<i>Tons</i>	<i>Tons</i>	<i>Dollars per Ton</i>	<i>Dollars per Ton</i>	<i>Dollars per Ton</i>
Sweet Cherries						
Canned						
MI	670	1,060	1,830	800.00	730.00	460.00
OR	2,700	1,500	400	900.00	1,010.00	1,290.00
WA	5,500	4,000	2,000	1,130.00	1,170.00	1,390.00
US	8,870	6,560	4,230	1,035.00	1,062.00	978.00
Brined						
MI	12,200	17,400	14,100	550.00	440.00	380.00
OR	18,000	8,300	8,200	732.00	765.00	957.00
WA	20,000	13,000	8,000	669.00	508.00	502.00
Oth Sts	6,030	9,460	10,150	637.00	315.00	244.00
US	56,230	48,160	40,450	660.00	490.00	487.00
Other ¹						
MI	6,130	8,040	9,170	897.00	949.00	634.00
OR	2,300	3,700	600	546.00	704.00	922.00
WA	19,500	11,000	5,000	302.00	204.00	278.00
Oth Sts	3,720	6,190	5,650	177.00	169.00	153.00
US	31,650	28,930	20,420	420.00	468.00	422.00
	<i>Million Pounds</i>	<i>Million Pounds</i>	<i>Million Pounds</i>	<i>Dollars per Pound</i>	<i>Dollars per Pound</i>	<i>Dollars per Pound</i>
Tart Cherries						
Canned						
MI	39.0	39.0	39.0	0.160	0.270	0.450
Oth Sts	9.8	8.7	10.8	0.242	0.306	0.372
US	48.8	47.7	49.8	0.176	0.277	0.433
Frozen						
MI	114.0	143.0	117.0	0.210	0.265	0.380
Oth Sts	42.8	36.3	28.0	0.270	0.273	0.339
US	156.8	179.3	145.0	0.226	0.267	0.372
Other ²						
MI	26.8	10.5	8.5	0.153	0.191	0.262
Oth Sts	14.8	9.6	8.9	0.261	0.340	0.331
US	41.6	20.1	17.4	0.192	0.262	0.297

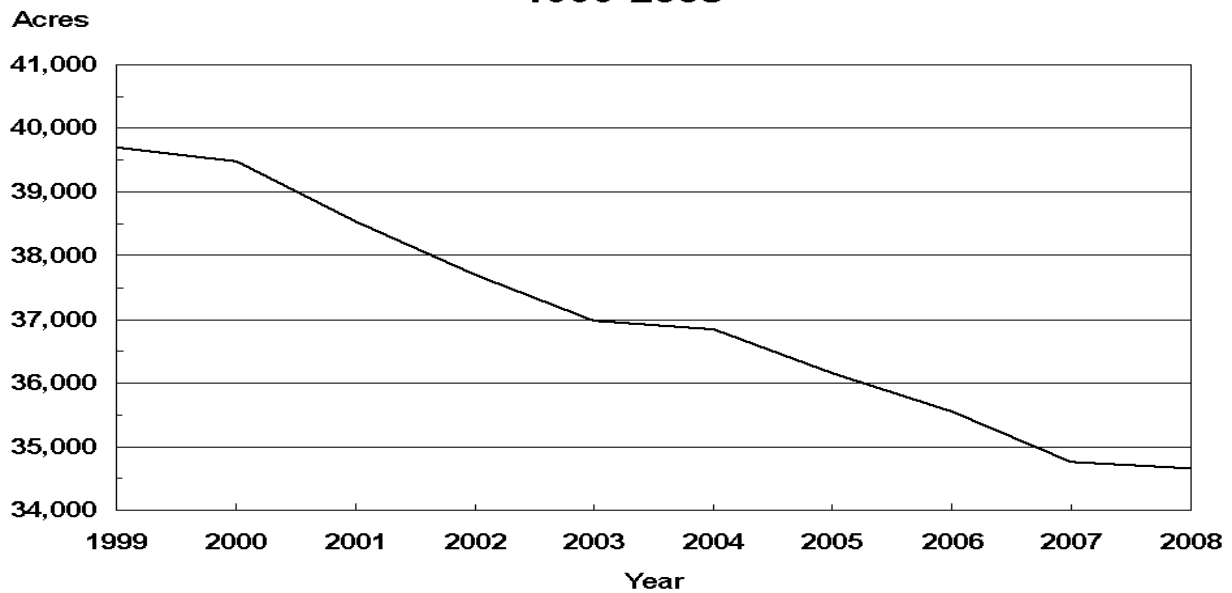
¹ Includes Montana canned utilization and other processed utilizations (frozen, juice, etc.) from all States.

² Juice, wine, brined, and dried.

U.S. Sweet Cherries Bearing Acres 1999-2008



U.S. Tart Cherries Bearing Acres 1999-2008



**Cranberries: Area Harvested, Yield, Production and Utilization
by State and United States, 2006-2008**

Year and State	Area Harvested	Yield per Acre ¹	Production		Utilization	
			Total	Utilized	Fresh	Processed
	<i>Acres</i>	<i>Barrels</i> ²	<i>Barrels</i> ²	<i>Barrels</i> ²	<i>Barrels</i> ²	<i>Barrels</i> ²
2006						
MA	13,500	139.7	1,886,000	1,886,000	155,000	1,731,000
NJ ³	3,100	156.5	485,000	480,000		480,000
OR ³	2,700	172.2	465,000	465,000		465,000
WA	1,700	67.1	114,000	114,000	30,500	83,500
WI	17,500	225.1	3,940,000	3,840,000	170,000	3,670,000
US	38,500	179.0	6,890,000	6,785,000	355,500	6,429,500
2007						
MA	13,000	117.1	1,522,000	1,522,000	101,000	1,421,000
NJ ³	3,100	171.3	531,000	531,000		531,000
OR ³	2,700	183.3	495,000	495,000		495,000
WA	1,700	103.5	176,000	176,000	29,000	147,000
WI	17,600	217.6	3,830,000	3,830,000	230,000	3,600,000
US	38,100	172.0	6,554,000	6,554,000	360,000	6,194,000
2008						
MA	13,000	176.9	2,300,000	2,300,000	129,000	2,171,000
NJ ³	3,100	165.2	512,000	512,000		512,000
OR ³	2,700	148.1	400,000	400,000		400,000
WA	1,700	55.3	94,000	94,000	19,500	74,500
WI	17,700	242.9	4,300,000	4,300,000	200,000	4,100,000
US	38,200	199.1	7,606,000	7,606,000	348,500	7,257,500

¹ Yield is based on total production.

² A barrel weighs 100 pounds.

³ Small quantities of fresh cranberries are included in processed to avoid disclosure of individual operations.

**Cranberries: Utilization, Price, and Value
by State and United States, 2006-2008**

Year and State	Price per Barrel ^{1 2}			Value of Utilized Production		
	Fresh	Processed	All	Fresh	Processed	All
	<i>Dollars</i>	<i>Dollars</i>	<i>Dollars</i>	<i>1,000 Dollars</i>	<i>1,000 Dollars</i>	<i>1,000 Dollars</i>
2006						
MA	63.50	39.30	41.30	9,843	68,028	77,871
NJ ³		39.20	39.20		18,816	18,816
OR ³		48.30	48.30		22,460	22,460
WA	60.70	40.00	45.50	1,851	3,340	5,191
WI	60.70	39.30	40.20	10,319	144,231	154,550
US	61.90	40.00	41.10	22,013	256,875	278,888
2007						
MA	68.60	45.00	46.60	6,929	63,945	70,874
NJ ³		42.20	42.20		22,408	22,408
OR ³		59.60	59.60		29,502	29,502
WA	64.00	42.40	46.00	1,856	6,233	8,089
WI	64.00	44.90	46.00	14,720	161,640	176,360
US	65.30	45.80	46.90	23,505	283,728	307,233
2008						
MA	70.90	55.00	55.90	9,146	119,405	128,551
NJ ³		49.70	49.70		25,446	25,446
OR ³		91.50	91.50		36,600	36,600
WA	68.00	49.00	52.90	1,326	3,651	4,977
WI	68.00	57.30	57.80	13,600	234,930	248,530
US	69.10	57.90	58.40	24,072	420,032	444,104

¹ Weighted average of co-op and independent sales. Co-op prices represent pool proceeds less returns for processing non-cranberry products, capital stock dividends, capital stock retains, and other retains.

² A barrel weighs 100 pounds.

³ Small quantities of fresh cranberries are included in processed to avoid disclosure of individual operations.

**Grapes: Bearing Acreage and Yield by Type,
State, and United States, 2006-2008**

State and Type	Bearing Acreage			Yield per Acre ¹		
	2006	2007	2008	2006	2007	2008
	<i>Acres</i>	<i>Acres</i>	<i>Acres</i>	<i>Tons</i>	<i>Tons</i>	<i>Tons</i>
AZ	300	250	250	3.00	3.60	3.20
AR	700	750	700	3.29	0.67	2.43
CA						
All Types	797,000	789,000	789,000	7.18	7.90	8.44
Wine	480,000	480,000	480,000	6.62	6.85	7.08
Table	83,000	82,000	82,000	8.64	9.65	10.60
Raisin	234,000	227,000	227,000	7.83	9.48	10.50
GA	1,100	1,200	1,200	2.64	2.42	2.92
MI	14,200	14,100	14,200	2.29	7.10	5.19
MO	1,300	1,400	1,500	3.21	1.79	3.47
NY	36,000	37,000	37,000	4.31	4.86	4.65
NC	1,500	1,700	1,700	3.27	2.15	3.29
OH	2,100	1,900	1,900	1.48	4.00	2.98
OR	12,600	13,800	14,500	2.73	2.80	2.80
PA	13,300	13,600	13,600	6.17	6.18	7.88
TX	2,900	2,900	2,500	2.45	1.69	1.68
VA	2,100	2,400	2,500	2.95	2.33	2.70
WA						
All Types	55,500	56,500	58,000	5.69	6.65	6.03
Wine	29,500	30,500	32,000	4.07	4.16	4.53
Juice	26,000	26,000	26,000	7.54	9.58	7.88
US	940,600	936,500	938,550	6.78	7.51	7.92

¹ Yield is based on total production.

**Grapes: Total and Utilized Production, Price, and Value
by Type, State, and United States, 2006-2008**

State and Type	Total Production			Utilized Production		
	2006	2007	2008	2006	2007	2008
	<i>Tons</i>	<i>Tons</i>	<i>Tons</i>	<i>Tons</i>	<i>Tons</i>	<i>Tons</i>
AZ	900	900	800	900	900	800
AR	2,300	500	1,700	2,200	500	1,700
CA						
All Types	5,726,000	6,230,000	6,658,000	5,726,000	6,230,000	6,658,000
Wine	3,176,000	3,288,000	3,400,000	3,176,000	3,288,000	3,400,000
Table ¹	717,000	791,000	867,000	717,000	791,000	867,000
Raisin ¹	1,833,000	2,151,000	2,391,000	1,833,000	2,151,000	2,391,000
GA	2,900	2,900	3,500	2,900	2,900	3,500
MI	32,500	100,100	73,700	27,500	100,100	73,700
MO	4,170	2,500	5,200	4,170	2,500	5,200
NY	155,000	180,000	172,000	153,000	180,000	172,000
NC	4,900	3,650	5,600	4,800	3,650	5,600
OH	3,100	7,600	5,660	3,100	7,600	5,350
OR	34,400	38,600	40,600	34,400	38,600	40,600
PA	82,000	84,000	107,200	82,000	84,000	94,200
TX	7,100	4,900	4,200	3,200	4,100	4,000
VA	6,200	5,600	6,750	6,000	5,400	6,550
WA						
All Types	316,000	376,000	350,000	316,000	376,000	350,000
Wine	120,000	127,000	145,000	120,000	127,000	145,000
Juice	196,000	249,000	205,000	196,000	249,000	205,000
US	6,377,470	7,037,250	7,434,910	6,366,170	7,036,250	7,421,200
	Price per Ton			Value of Utilized Production		
	2006	2007	2008	2006	2007	2008
	<i>Dollars</i>	<i>Dollars</i>	<i>Dollars</i>	<i>1,000 Dollars</i>	<i>1,000 Dollars</i>	<i>1,000 Dollars</i>
AZ ²	832.00		775.00	749		620
AR ²	621.00		1,080.00	1,366		1,844
CA						
All Types	524.00	494.00	437.00	2,999,958	3,075,614	2,912,209
Wine	582.00	564.00	564.00	1,848,288	1,855,120	1,918,400
Table ¹	898.00	787.00	423.00	643,777	622,894	366,704
Raisin ¹	277.00	278.00	262.00	507,893	597,600	627,105
GA	1,270.00	1,200.00	1,130.00	3,690	3,477	3,950
MI	336.00	286.00	364.00	9,242	28,605	26,794
MO	698.00	932.00	962.00	2,912	2,331	5,001
NY	261.00	299.00	339.00	39,946	53,843	58,354
NC	1,030.00	1,270.00	1,170.00	4,960	4,630	6,563
OH	608.00	390.00	356.00	1,885	2,962	1,902
OR	1,750.00	1,880.00	2,000.00	60,200	72,568	81,200
PA	247.00	270.00	292.00	20,280	22,707	27,477
TX	1,200.00	1,160.00	1,200.00	3,855	4,751	4,804
VA	1,440.00	1,400.00	1,500.00	8,640	7,560	9,825
WA						
All Types	465.00	457.00	575.00	146,948	171,705	201,215
Wine	942.00	954.00	1,030.00	113,040	121,158	149,350
Juice	173.00	203.00	253.00	33,908	50,547	51,865
Oth Sts		787.00			1,102	
US	519.00	491.00	450.00	3,304,631	3,451,855	3,341,758

¹ Fresh equivalent of dried and not dried.

² Missing estimates included in Other States to avoid disclosure of individual operations.

**Grapes: Fresh and Processed Utilization, and Price
by Type, State, and United States, 2006-2008**

Utilization, State, and Type	Fresh and Processed Utilization					
	Quantity			Price per Ton		
	2006	2007	2008	2006	2007	2008
	<i>Tons</i>	<i>Tons</i>	<i>Tons</i>	<i>Dollars</i>	<i>Dollars</i>	<i>Dollars</i>
Fresh						
CA						
All Types	792,000	913,000	969,000	986.00	870.00	517.00
Wine	40,000	40,000	40,000	500.00	500.00	500.00
Table	601,000	700,000	724,000	1,040.00	868.00	461.00
Raisin	151,000	173,000	205,000	902.00	962.00	718.00
MI	100	1,100	1,200	1,600.00	2,500.00	2,700.00
MO	70	60	70	600.00	1,040.00	1,080.00
NY	3,000	4,000	4,000	720.00	900.00	727.00
NC	200	250	350	1,800.00	2,200.00	2,250.00
OH	100	100	70	760.00	1,260.00	1,150.00
PA	300	500	1,500	700.00	850.00	700.00
TX	100	300	50	1,350.00	1,270.00	1,280.00
Oth Sts	1,720	1,020	1,960	1,300.00	1,330.00	1,310.00
US	797,590	920,330	978,200	986.00	873.00	523.00
Processed						
CA						
All Types	4,934,000	5,317,000	5,689,000	450.00	429.00	424.00
Wine	3,136,000	3,248,000	3,360,000	583.00	565.00	565.00
Table	116,000	91,000	143,000	162.00	168.00	230.00
Raisin	1,682,000	1,978,000	2,186,000	221.00	218.00	220.00
MI	27,400	99,000	72,500	331.00	261.00	325.00
MO	4,100	2,440	5,130	700.00	930.00	960.00
NY	150,000	176,000	168,000	252.00	285.00	330.00
NC	4,600	3,400	5,250	1,000.00	1,200.00	1,100.00
OH	3,000	7,500	5,280	603.00	378.00	345.00
OR ¹	34,400	38,600	40,600	1,750.00	1,880.00	2,000.00
PA	81,700	83,500	92,700	246.00	267.00	285.00
TX	3,100	3,800	3,950	1,200.00	1,150.00	1,200.00
VA	6,000	5,400	6,550	1,440.00	1,400.00	1,500.00
WA						
All Types	316,000	376,000	350,000	465.00	457.00	575.00
Wine	120,000	127,000	145,000	942.00	954.00	1,030.00
Juice	196,000	249,000	205,000	173.00	203.00	253.00
Oth Sts	4,280	3,280	4,040	835.00	984.00	954.00
US	5,568,580	6,115,920	6,443,000	452.00	433.00	439.00

¹ Includes small quantities sold fresh.

**Grapes: Fresh and Processed Value by Type,
State, and United States, 2006-2008**

Utilization, State, and Type	Fresh and Processed Utilization		
	Value of Utilized Production		
	2006	2007	2008
	<i>1,000 Dollars</i>	<i>1,000 Dollars</i>	<i>1,000 Dollars</i>
Fresh			
CA			
All Types	781,242	794,026	500,954
Wine	20,000	20,000	20,000
Table	625,040	607,600	333,764
Raisin	136,202	166,426	147,190
MI	160	2,750	3,240
MO	42	62	76
NY	2,160	3,600	2,908
NC	360	550	788
OH	76	126	81
PA	210	425	1,050
TX	135	381	64
Oth Sts	2,233	1,351	2,558
US	786,618	803,271	511,719
Processed			
CA			
All Types	2,218,716	2,281,588	2,411,255
Wine	1,828,288	1,835,120	1,898,400
Table	18,737	15,294	32,940
Raisin	371,691	431,174	479,915
MI	9,082	25,855	23,554
MO	2,870	2,269	4,925
NY	37,786	50,243	55,446
NC	4,600	4,080	5,775
OH	1,809	2,836	1,821
OR ¹	60,200	72,568	81,200
PA	20,070	22,282	26,427
TX	3,720	4,370	4,740
VA	8,640	7,560	9,825
WA			
All Types	146,948	171,705	201,215
Wine	113,040	121,158	149,350
Juice	33,908	50,547	51,865
Oth Sts	3,572	3,228	3,856
US	2,518,013	2,648,584	2,830,039

¹ Includes small quantities sold fresh.

**Grapes: Processed Utilization, Use, and Price
by Type, State, and United States, 2006-2008**

Use and State	Processed Utilization					
	Quantity			Price per Ton		
	2006	2007	2008	2006	2007	2008
	<i>Tons</i>	<i>Tons</i>	<i>Tons</i>	<i>Dollars</i>	<i>Dollars</i>	<i>Dollars</i>
Canned						
CA						
Raisin	21,000	21,000	25,000	303.00	314.00	323.00
Juice ^{1 2}						
MI	23,100	93,600	67,200	207.00	222.00	274.00
NY	112,000	135,000	123,000	221.00	227.00	262.00
OH	1,600	5,800	4,430	247.00	231.00	265.00
PA	65,500	69,000	79,500	205.00	221.00	265.00
WA	196,000	249,000	205,000	173.00	203.00	253.00
Oth Sts ³		1,000			747.00	
US	398,200	553,400	479,130	194.00	216.00	260.00
Wine						
CA						
All Types	3,489,000	3,675,000	3,960,000	539.00	517.00	513.00
Wine	3,136,000	3,248,000	3,360,000	583.00	565.00	565.00
Table	86,000	63,000	100,000	137.00	138.00	225.00
Raisin	267,000	364,000	500,000	154.00	155.00	225.00
MI	4,300	5,400	5,300	1,000.00	940.00	970.00
MO	4,100	2,440	5,130	700.00	930.00	960.00
NY	38,000	41,000	45,000	343.00	478.00	516.00
NC	4,600	3,400	5,250	1,000.00	1,200.00	1,100.00
OH	1,400	1,700	850	1,010.00	880.00	761.00
OR ²	34,400	38,600	40,600	1,750.00	1,880.00	2,000.00
PA	16,200	14,500	13,200	410.00	485.00	406.00
TX	3,100	3,800	3,950	1,200.00	1,150.00	1,200.00
VA	6,000	5,400	6,550	1,440.00	1,400.00	1,500.00
WA	120,000	127,000	145,000	942.00	954.00	1,030.00
Oth Sts ³	4,280	2,280	4,040	835.00	1,090.00	954.00
US	3,725,380	3,920,520	4,234,870	564.00	548.00	550.00
Dried (Fr Basis)						
CA						
All Types	1,424,000	1,621,000	1,704,000	233.00	231.00	217.00
Table	30,000	28,000	43,000	232.00	236.00	243.00
Raisin	1,394,000	1,593,000	1,661,000	233.00	231.00	216.00

¹ Includes small quantities of other processed (jam, jelly, etc.).

² Includes small quantities for other uses.

³ Grapes processed for juice in 2006 and 2008 are included in Other States wine to avoid disclosure of individual operations.

**Concord Grapes: Processed Utilization by State
and United States, 2006-2008**

State	Processed Utilization		
	2006	2007	2008
	<i>Tons</i>	<i>Tons</i>	<i>Tons</i>
MI	15,350	61,000	45,800
NY	108,600	131,000	127,000
OH	1,600	5,800	4,400
PA	71,400	71,500	81,500
WA	175,000	226,000	188,000
Oth.Sts	920	172	430
US	372,870	495,472	447,130

**Concord Grapes for Processing: Marketing Year Average Prices,
New York and Pennsylvania, 2006-2008**

State	2006	2007	2008
	<i>Dollars per Ton</i>	<i>Dollars per Ton</i>	<i>Dollars per Ton</i>
NY	217.00	223.00	253.00
PA	205.00	219.00	256.00

**Niagara Grapes: Processed Utilization by State
and United States, 2006-2008**

State	Processed Utilization		
	2006	2007	2008
	<i>Tons</i>	<i>Tons</i>	<i>Tons</i>
MI	8,100	33,500	22,000
NY	18,500	21,000	15,000
OH	200	500	190
PA	5,000	5,600	6,200
WA	21,000	23,000	17,000
US	52,800	83,600	60,390

**Peaches: Bearing Acreage and Yield by Type,
State, and United States, 2006-2008**

State	Bearing Acreage			Yield per Acre ¹		
	2006	2007	2008	2006	2007	2008
	<i>Acres</i>	<i>Acres</i>	<i>Acres</i>	<i>Tons</i>	<i>Tons</i>	<i>Tons</i>
AL	2,700	2,500	2,500	3.33	1.20	2.80
AR	1,400	1,300	1,300	3.00	0.01	3.38
CA						
Freestone	32,000	31,000	31,000	11.00	14.40	13.70
CO	2,300	2,300	2,300	6.09	5.65	6.09
CT	400	400	400	2.25	2.75	3.00
GA	10,000	9,500	9,500	4.10	1.37	2.95
ID	1,050	1,100	1,200	8.57	6.36	6.67
IL	1,600	1,600	1,600	7.11	0.06	5.46
KY	360	380	380	4.06	0.05	4.47
LA	260	250	240	2.12	2.40	1.88
MD	900	850	850	4.06	3.88	4.09
MA	410	430	430	3.41	3.84	3.84
MI	4,500	4,300	4,300	4.20	4.77	3.26
MO	1,500	1,700	1,700	4.26	0.01	3.59
NJ	6,600	6,300	6,200	5.15	5.08	5.48
NY	1,700	1,700	1,600	4.12	3.71	3.44
NC	1,200	1,200	1,200	4.69	0.54	4.67
OH	1,400	1,300	1,300	2.31	3.15	5.08
OK	800	800	800	2.00	1.13	1.25
OR	600	650	650	3.50	4.62	2.46
PA	4,300	4,400	4,400	5.02	4.41	4.82
SC	14,000	14,000	14,000	4.29	0.89	4.29
TN ²	500	500	500	3.80		3.20
TX	5,800	4,600	4,900	0.27	1.57	1.61
UT	1,400	1,500	1,500	4.00	3.00	3.33
VA	1,100	1,000	1,000	3.64	1.60	3.20
WA	2,400	2,300	2,300	9.58	8.04	5.39
WV	950	950	950	5.47	4.42	5.89
Total Above	102,130	98,810	99,000	6.38	6.32	7.03
CA						
Clingstone	27,000	26,500	25,000	13.30	19.00	17.00
US	129,130	125,310	124,000	7.82	8.99	9.05

¹ Yield is based on total production.

² No significant commercial production in 2007 due to freeze damage.

**Peaches: Bearing Acreage and Yield by Type,
California, 2006-2008**

Type	Bearing Acreage			Yield per Acre ¹		
	2006	2007	2008	2006	2007	2008
	<i>Acres</i>	<i>Acres</i>	<i>Acres</i>	<i>Tons</i>	<i>Tons</i>	<i>Tons</i>
Freestone	32,000	31,000	31,000	11.00	14.40	13.70
Clingstone	27,000	26,500	25,000	13.30	19.00	17.00
Total	59,000	57,500	56,000	12.10	16.50	15.20

¹ Yield is based on total production.

**Peaches: Total and Utilized Production, by Type,
State, and United States, 2006-2008**

State	Total Production			Utilized Production		
	2006	2007	2008	2006	2007	2008
	<i>Tons</i>	<i>Tons</i>	<i>Tons</i>	<i>Tons</i>	<i>Tons</i>	<i>Tons</i>
AL	9,000	3,000	7,000	5,000	2,500	6,000
AR	4,200	15	4,400	3,850	10	4,200
CA						
Freestone	353,000	446,000	426,000	353,000	446,000	426,000
CO	14,000	13,000	14,000	13,000	11,000	13,000
CT	900	1,100	1,200	900	1,100	1,200
GA	41,000	13,000	28,000	37,000	12,000	25,000
ID	9,000	7,000	8,000	9,000	6,860	7,420
IL	11,370	100	8,730	10,740	90	7,960
KY	1,460	20	1,700	1,330	20	1,600
LA	550	600	450	550	600	450
MD	3,650	3,300	3,480	3,630	3,200	3,470
MA	1,400	1,650	1,650	1,400	1,600	1,650
MI	18,900	20,500	14,000	18,700	19,100	13,700
MO	6,390	15	6,100	6,390	15	6,100
NJ	34,000	32,000	34,000	34,000	28,800	26,000
NY	7,000	6,300	5,500	6,730	6,300	5,200
NC	5,630	650	5,600	5,290	650	5,250
OH	3,240	4,100	6,600	3,000	4,000	6,500
OK	1,600	900	1,000	1,500	800	800
OR	2,100	3,000	1,600	2,000	2,700	1,500
PA	21,600	19,400	21,200	21,300	19,400	21,200
SC	60,000	12,500	60,000	50,000	12,000	57,000
TN ¹	1,900		1,600	1,800		1,600
TX	1,590	7,200	7,900	750	5,700	6,300
UT	5,600	4,500	5,000	5,400	4,400	4,500
VA	4,000	1,600	3,200	3,950	1,550	3,130
WA	23,000	18,500	12,400	23,000	18,500	12,400
WV	5,200	4,200	5,600	5,000	4,000	5,000
Total Above	651,280	624,150	695,910	628,210	612,895	674,130
CA						
Clingstone	359,000	503,000	426,000	359,000	503,000	426,000
US	1,010,280	1,127,150	1,121,910	987,210	1,115,895	1,100,130

¹ No significant commercial production in 2007 due to freeze damage.

**Peaches: Total and Utilized Production, by Type,
California, 2006-2008**

Type	Total Production			Utilized Production		
	2006	2007	2008	2006	2007	2008
	<i>Tons</i>	<i>Tons</i>	<i>Tons</i>	<i>Tons</i>	<i>Tons</i>	<i>Tons</i>
Freestone	353,000	446,000	426,000	353,000	446,000	426,000
Clingstone	359,000	503,000	426,000	359,000	503,000	426,000
Total	712,000	949,000	852,000	712,000	949,000	852,000

**Peaches: Price and Value by Type, State,
and United States, 2006-2008**

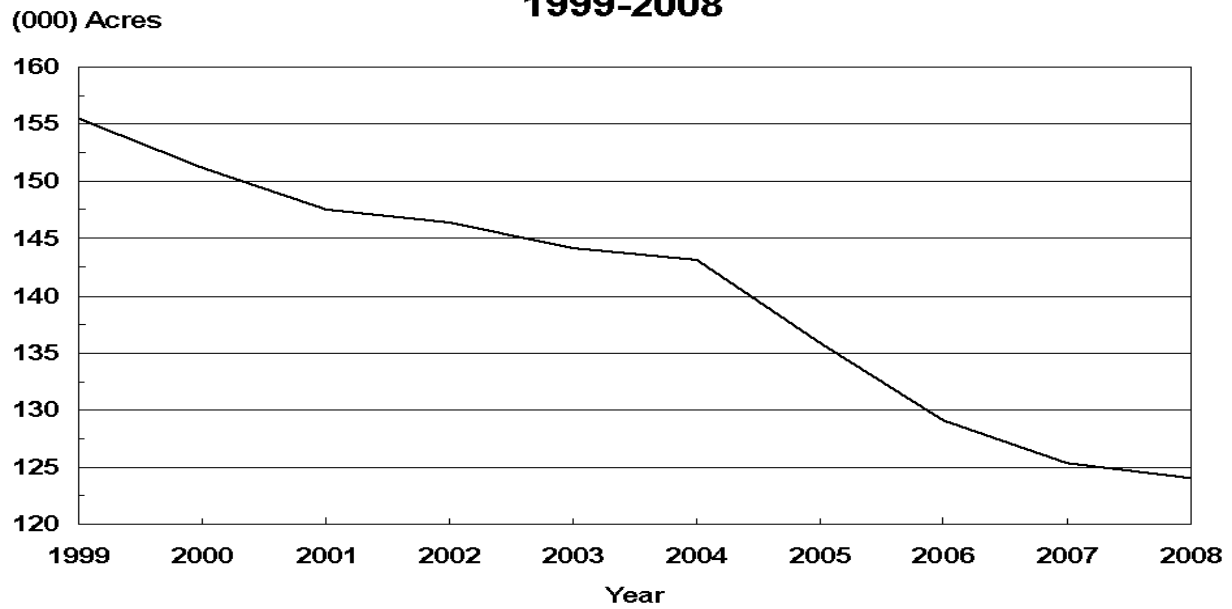
State	Price per Ton			Value of Utilized Production		
	2006	2007	2008	2006	2007	2008
	<i>Dollars</i>	<i>Dollars</i>	<i>Dollars</i>	<i>1,000 Dollars</i>	<i>1,000 Dollars</i>	<i>1,000 Dollars</i>
AL	1,030.00	1,050.00	1,030.00	5,142	2,625	6,184
AR	1,030.00	1,300.00	1,110.00	3,970	13	4,660
CA						
Freestone	469.00	402.00	338.00	165,562	179,175	143,927
CO	1,310.00	1,550.00	1,430.00	17,030	17,080	18,540
CT	1,800.00	1,800.00	1,800.00	1,620	1,980	2,160
GA	892.00	819.00	773.00	33,020	9,830	19,326
ID	655.00	1,150.00	681.00	5,899	7,879	5,050
IL	1,200.00	1,200.00	1,160.00	12,896	108	9,259
KY	1,260.00	2,050.00	1,630.00	1,676	41	2,608
LA	1,730.00	1,900.00	2,310.00	952	1,140	1,040
MD	1,030.00	1,170.00	1,150.00	3,739	3,744	3,977
MA	1,940.00	1,800.00	2,000.00	2,716	2,880	3,300
MI	699.00	853.00	661.00	13,066	16,298	9,052
MO	880.00	1,730.00	1,850.00	5,623	26	11,285
NJ	1,050.00	1,140.00	920.00	35,700	32,832	23,920
NY	667.00	634.00	922.00	4,489	3,995	4,796
NC	967.00	1,130.00	1,010.00	5,115	735	5,303
OH	1,220.00	1,510.00	1,370.00	3,660	6,040	8,905
OK	1,120.00	1,590.00	1,600.00	1,680	1,272	1,280
OR	1,180.00	970.00	1,000.00	2,350	2,618	1,504
PA	913.00	903.00	1,020.00	19,454	17,524	21,528
SC	749.00	1,130.00	874.00	37,474	13,616	49,831
TN ¹	1,410.00		1,580.00	2,538		2,528
TX	1,640.00	1,950.00	2,100.00	1,230	11,115	13,230
UT	672.00	667.00	868.00	3,627	2,934	3,906
VA	790.00	1,040.00	1,070.00	3,121	1,618	3,349
WA	522.00	480.00	640.00	12,008	8,873	7,936
WV	578.00	858.00	650.00	2,890	3,431	3,250
Total Above	650.00	570.00	581.00	408,247	349,422	391,634
CA						
Clingstone	292.00	304.00	347.00	104,846	152,665	147,857
US	520.00	450.00	490.00	513,093	502,087	539,491

¹ No significant commercial production in 2007 due to freeze damage.

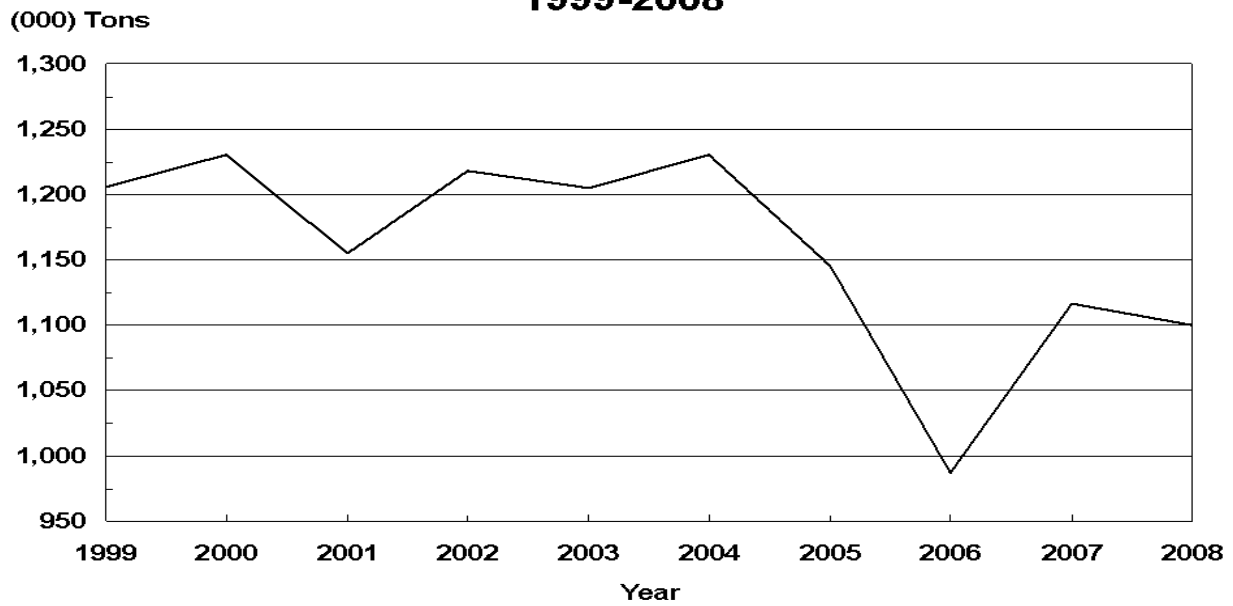
**Peaches: Price and Value by Type,
California, 2006-2008**

Type	Price per Ton			Value of Utilized Production		
	2006	2007	2008	2006	2007	2008
	<i>Dollars</i>	<i>Dollars</i>	<i>Dollars</i>	<i>1,000 Dollars</i>	<i>1,000 Dollars</i>	<i>1,000 Dollars</i>
Freestone	469.00	402.00	338.00	165,562	179,175	143,927
Clingstone	292.00	304.00	347.00	104,846	152,665	147,857
Total	380.00	350.00	342.00	270,408	331,840	291,784

U.S. Peaches Bearing Acres 1999-2008



U.S. Peaches Utilized Production 1999-2008



**Peaches: Fresh and Processed Utilization, and Price
by Type, State, and United States, 2006-2008**

Use and State	Fresh and Processed Utilization					
	Quantity			Price per Unit		
	2006	2007	2008	2006	2007	2008
	<i>Tons</i>	<i>Tons</i>	<i>Tons</i>	<i>Dollars per Ton</i>	<i>Dollars per Ton</i>	<i>Dollars per Ton</i>
Fresh						
AL ¹	4,900	2,500		977.00	1,050.00	
CA						
Freestone	242,000	297,000	292,000	597.00	498.00	395.00
CT	900	1,100	1,200	1,800.00	1,800.00	1,800.00
GA ²		11,500	24,000		840.00	792.00
IL ¹	10,700	90		1,200.00	1,200.00	
KY	1,330	20	1,600	1,260.00	2,050.00	1,630.00
LA	550	600	450	1,730.00	1,900.00	2,310.00
MD	3,630	3,200	3,360	1,030.00	1,170.00	1,170.00
MA	1,400	1,600	1,650	1,940.00	1,800.00	2,000.00
MI ¹	11,350			860.00		
MO	6,390	15	6,100	880.00	1,730.00	1,850.00
NY ¹	3,050	3,000		784.00	754.00	
OH	3,000	4,000	6,500	1,220.00	1,510.00	1,370.00
OK	1,500	800	800	1,120.00	1,590.00	1,600.00
SC	39,000	11,000	53,000	866.00	1,200.00	915.00
TN ³	1,800		1,600	1,410.00		1,580.00
TX	750	5,700	6,300	1,640.00	1,950.00	2,100.00
VA	3,950	1,550	3,130	790.00	1,040.00	1,070.00
WV	5,000	4,000	5,000	578.00	858.00	650.00
Oth Sts	140,380	93,510	114,140	966.00	1,090.00	1,020.00
US	481,580	441,185	520,830	779.00	706.00	684.00
	<i>Tons</i>	<i>Tons</i>	<i>Tons</i>	<i>Dollars per Ton</i>	<i>Dollars per Ton</i>	<i>Dollars per Ton</i>
Processed						
CA						
Clingstone	359,000	503,000	426,000	292.00	304.00	347.00
Freestone ⁴	111,000	149,000	134,000	205.00	224.00	226.00
GA ²		500	1,000		340.00	318.00
MD			110			418.00
MI ¹	7,350			450.00		
NY ¹	3,680	3,300		570.00	525.00	
SC	11,000	1,000	4,000	336.00	416.00	334.00
Oth Sts	13,600	17,910	14,190	215.00	250.00	358.00
US ⁵	505,630	674,710	579,300	273.00	283.00	316.00

¹ Missing data included in Other States to avoid disclosure of individual operations.

² State level estimates published individually beginning in 2007.

³ No significant commercial production in 2007 due to freeze damage.

⁴ CA Freestone quantity and value include dried, price excludes dried.

⁵ US quantity, price, and value include dried.

**Peaches: Fresh and Processed Value by State
and United States, 2006-2008**

Use and State	Fresh and Processed Utilization		
	Value of Utilized Production		
	2006	2007	2008
	<i>1,000 Dollars</i>	<i>1,000 Dollars</i>	<i>1,000 Dollars</i>
Fresh			
AL ¹	4,787	2,625	
CA	144,474	147,906	115,340
Freestone			
CT	1,620	1,980	2,160
GA ²		9,660	19,008
IL ¹	12,840	108	
KY	1,676	41	2,608
LA	952	1,140	1,040
MD	3,739	3,744	3,931
MA	2,716	2,880	3,300
MI ¹	9,761		
MO	5,623	26	11,285
NY ¹	2,391	2,262	
OH	3,660	6,040	8,905
OK	1,680	1,272	1,280
SC	33,774	13,200	48,495
TN ³	2,538		2,528
TX	1,230	11,115	13,230
VA	3,121	1,618	3,349
WV	2,890	3,431	3,250
Oth Sts	135,661	102,317	116,558
US	375,133	311,365	356,267
Processed			
CA			
Clingstone	104,846	152,665	147,857
Freestone ⁴	21,088	31,269	28,587
GA ²		170	318
MD			46
MI ¹	3,305		
NY ¹	2,098	1,733	
SC	3,700	416	1,336
Oth Sts	2,923	4,469	5,080
US ⁵	137,960	190,722	183,224

¹ Missing data included in Other States to avoid disclosure of individual operations.

² State level estimates published individually beginning in 2007.

³ No significant commercial production in 2007 due to freeze damage.

⁴ CA Freestone quantity and value include dried, price excludes dried.

⁵ US quantity, price, and value include dried.

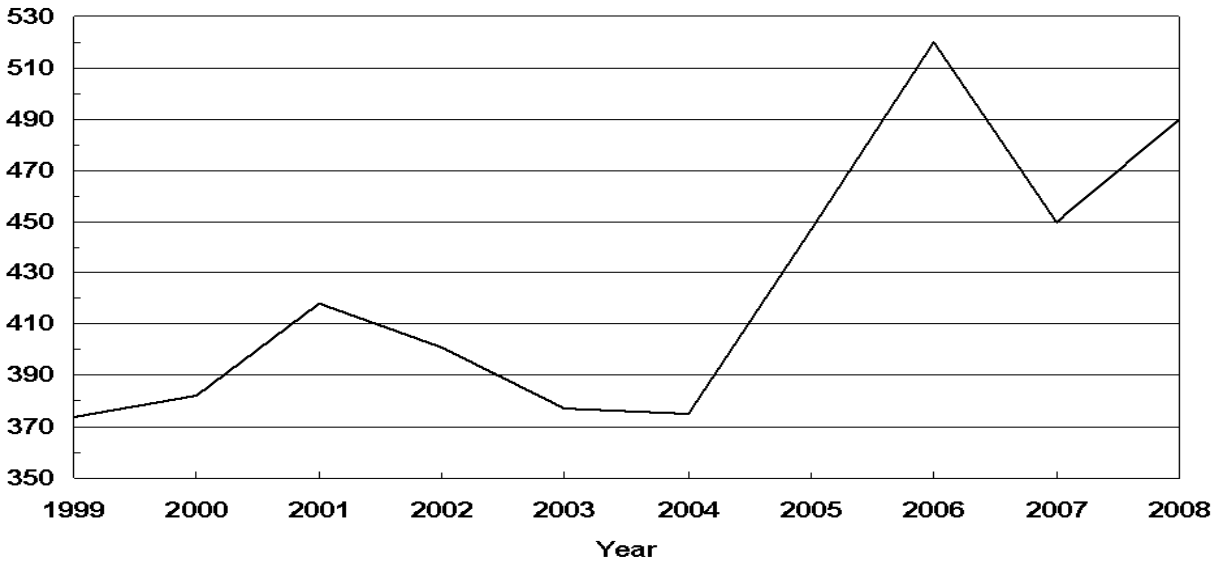
**Peaches: Processed Utilization, and Price by Use,
State, and United States, 2006-2008**

Use and State	Processed Utilization					
	Quantity			Price per Ton		
	2006	2007	2008	2006	2007	2008
	<i>Tons</i>	<i>Tons</i>	<i>Tons</i>	<i>Dollars</i>	<i>Dollars</i>	<i>Dollars</i>
Canned						
CA						
Clingstone	344,000	466,000	407,000	295.00	308.00	351.00
Oth Sts	30,090	18,820	19,280	365.00	352.00	336.00
US	374,090	484,820	426,280	301.00	310.00	350.00
Frozen						
CA						
Freestone	84,100	107,900	95,100	209.00	249.00	251.00
Oth Sts	12,130	27,500	16,320	403.00	322.00	380.00
US	96,230	135,400	111,420	234.00	264.00	270.00
Dried						
CA						
Freestone	13,100	12,700	9,500	79.00	57.00	50.00
US	13,100	12,700	9,500	79.00	57.00	50.00
Other ¹						
US	22,210	41,790	32,100	90.00	98.00	104.00

¹ Pickled, wine, brandy, juice, and baby food.

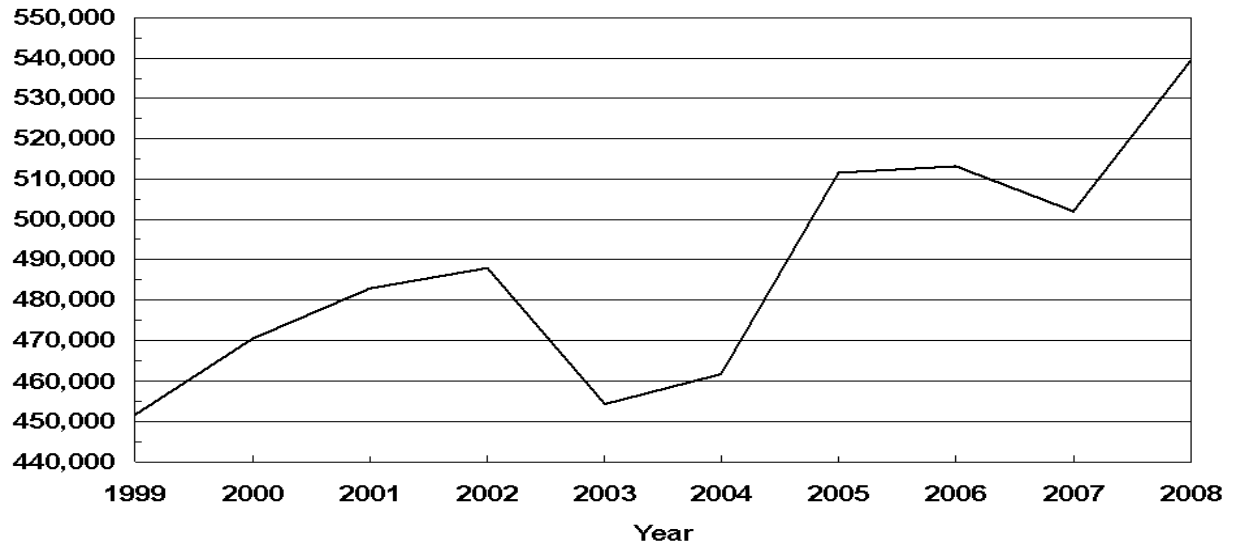
U.S. Peaches Prices Received 1999-2008

Dollars Per Ton



U.S. Peaches Value of Utilized Production 1999-2008

(000) Dollars



**All Pears: Bearing Acreage, Yield, Production, and Utilization
by State and United States, 2006-2008 ¹**

State and Year	Bearing Acreage	Yield Per Acre ²	Production		Utilization	
			Total	Utilized	Fresh	Processed
	<i>Acres</i>	<i>Tons</i>	<i>Tons</i>	<i>Tons</i>	<i>Tons</i>	<i>Tons</i>
CA						
2006	16,000	14.90	239,000	229,000		
2007	15,000	16.20	243,000	243,000		
2008	15,000	16.00	240,000	240,000		
CO						
2006			2,300	2,000		
2007			1,700	1,700		
2008			1,900	1,900		
CT						
2006			1,000	1,000		
2007			1,000	1,000		
2008			700	700		
MI						
2006	800	4.50	3,600	3,500		
2007	800	5.00	4,000	3,600		
2008	800	3.56	2,850	2,800		
NY						
2006	1,400	11.40	16,000	15,600		
2007	1,200	9.17	11,000	10,300		
2008	1,200	8.58	10,300	9,400		
OR						
2006	16,200	13.30	215,000	215,000		
2007	16,200	12.70	206,000	206,000		
2008	16,200	12.20	197,000	197,000		
PA						
2006	800	4.88	3,900	3,800		
2007	800	5.00	4,000	4,000		
2008	800	3.00	2,400	2,400		
UT						
2006	120	1.96	235	220		
2007	120	2.08	250	250		
2008	120	2.50	300	280		
WA						
2006	24,000	15.00	361,000	361,000		
2007	24,000	16.80	402,000	402,000		
2008	24,000	15.10	363,000	363,000		
US ³						
2006	59,840	14.10	842,035	831,120	500,720	330,400
2007	58,640	14.90	872,950	871,850	551,960	319,890
2008	58,640	14.00	818,450	817,480	519,880	297,600

¹ Missing data not published to avoid disclosure of individual operations.

² Yield is based on total production.

³ Processed mostly canned, but includes small quantities dried and other uses not published separately to avoid disclosure of individual operations.

**All Pears: Price and Value by State
and United States, 2006-2008¹**

State and Year	Price per Ton			Value of Production		
	Fresh	Processed Exc. Dried	All	Fresh	Processed Inc. Dried	All
	<i>Dollars</i>	<i>Dollars</i>	<i>Dollars</i>	<i>1,000 Dollars</i>	<i>1,000 Dollars</i>	<i>1,000 Dollars</i>
CA						
2006			298.00			68,269
2007			340.00			82,691
2008			471.00			113,153
CO						
2006			543.00			1,085
2007			976.00			1,660
2008			602.00			1,144
CT						
2006			1,100.00			1,100
2007			1,300.00			1,300
2008			1,300.00			910
MI						
2006			320.00			1,120
2007			450.00			1,621
2008			414.00			1,158
NY						
2006			429.00			6,685
2007			497.00			5,120
2008			504.00			4,742
OR						
2006			417.00			89,592
2007			434.00			89,417
2008			470.00			92,582
PA						
2006			712.00			2,706
2007			717.00			2,869
2008			744.00			1,786
UT						
2006			636.00			140
2007			760.00			190
2008			729.00			204
WA						
2006			441.00			159,231
2007			443.00			178,224
2008			471.00			171,108
US ²						
2006	528.00	199.00	397.00	264,222	65,706	329,928
2007	534.00	214.00	416.00	294,645	68,447	363,092
2008	598.00	255.00	473.00	311,040	75,747	386,787

¹ Missing data not published to avoid disclosure of individual operations.

² Processed mostly canned, but includes small quantities dried and other uses not published separately to avoid disclosure of individual operations.

**Pears: Bearing Acreage, Yield, Production, and Utilization
by Type, State, and United States, 2006-2008 ¹**

Type, State and Year	Bearing Acreage	Yield Per Acre ²	Production		Utilization	
			Total	Utilized	Fresh	Processed
	<i>Acres</i>	<i>Tons</i>	<i>Tons</i>	<i>Tons</i>	<i>Tons</i>	<i>Tons</i>
Bartlett ³						
CA						
2006	12,000	16.60	199,000	189,000	59,000	130,000
2007	11,000	18.30	201,000	201,000	64,000	137,000
2008	11,000	17.70	195,000	195,000	70,000	125,000
OR						
2006	4,200	15.00	63,000	63,000	30,000	33,000
2007	4,200	14.00	59,000	59,000	31,000	28,000
2008	4,200	13.60	57,000	57,000	29,000	28,000
WA						
2006	11,000	15.00	165,000	165,000	54,000	111,000
2007	11,000	14.80	163,000	163,000	66,000	97,000
2008	11,000	14.40	158,000	158,000	63,000	95,000
Total						
2006	27,200	15.70	427,000	417,000	143,000	274,000
2007	26,200	16.20	423,000	423,000	161,000	262,000
2008	26,200	15.70	410,000	410,000	162,000	248,000
Other ⁴						
CA						
2006	4,000	10.00	40,000	40,000		
2007	4,000	10.50	42,000	42,000		
2008	4,000	11.30	45,000	45,000		
OR						
2006	12,000	12.70	152,000	152,000		
2007	12,000	12.30	147,000	147,000		
2008	12,000	11.70	140,000	140,000		
WA						
2006	13,000	15.10	196,000	196,000		
2007	13,000	18.40	239,000	239,000		
2008	13,000	15.80	205,000	205,000		
Total						
2006	29,000	13.40	388,000	388,000	338,000	50,000
2007	29,000	14.80	428,000	428,000	375,500	52,500
2008	29,000	13.50	390,000	390,000	345,000	45,000

¹ Missing data not published to avoid disclosure of individual operations.

² Yield is based on total production.

³ Processed mostly canned, but includes small quantities dried and other uses not published separately to avoid disclosure of individual operations.

⁴ Processed mostly juice, but includes small quantities canned and other uses not published separately to avoid disclosure of individual operations.

**Pears: Price and Value by Type, State,
and United States, 2006-2008**¹

Type, State and Year	Price per Ton			Value of Production		
	Fresh	Processed Exc. Dried	All	Fresh	Processed Inc. Dried	All
	<i>Dollars</i>	<i>Dollars</i>	<i>Dollars</i>	<i>1,000 Dollars</i>	<i>1,000 Dollars</i>	<i>1,000 Dollars</i>
Bartlett ²						
CA						
2006	210.00	249.00	237.00	12,390	32,319	44,709
2007	367.00	253.00	289.00	23,488	34,610	58,098
2008	532.00	345.00	411.00	37,240	42,942	80,182
OR						
2006	552.00	229.00	383.00	16,560	7,571	24,131
2007	517.00	219.00	375.00	16,027	6,120	22,147
2008	552.00	226.00	392.00	16,008	6,333	22,341
WA						
2006	642.00	202.00	346.00	34,668	22,454	57,122
2007	573.00	239.00	374.00	37,818	23,172	60,990
2008	581.00	237.00	374.00	36,603	22,535	59,138
Total						
2006	445.00	227.00	302.00	63,618	62,344	125,962
2007	480.00	244.00	334.00	77,333	63,902	141,235
2008	555.00	290.00	394.00	89,851	71,810	161,661
Other ³						
CA						
2006			589.00			23,560
2007			586.00			24,593
2008			733.00			32,971
OR						
2006			431.00			65,461
2007			458.00			67,270
2008			502.00			70,241
WA						
2006			521.00			102,109
2007			491.00			117,234
2008			546.00			111,970
Total						
2006	560.00	36.90	493.00	189,284	1,846	191,130
2007	549.00	55.40	489.00	206,191	2,906	209,097
2008	616.00	60.10	552.00	212,479	2,703	215,182

¹ Missing data not published to avoid disclosure of individual operations.

² Processed mostly canned, but includes small quantities dried and other uses not published separately to avoid disclosure of individual operations.

³ Processed mostly juice, but includes small quantities canned and other uses not published separately to avoid disclosure of individual operations.

**Hawaii Crops: Acreage Harvested, Yield, Utilized
Production, and Utilization, 2006-2008**

Crop and Year	Acreage Harvested	Yield Per Acre	Utilized Production	Utilization	
				Fresh	Processed
	<i>Acres</i>	<i>1,000 Pounds</i>	<i>1,000 Pounds</i>	<i>1,000 Pounds</i>	<i>1,000 Pounds</i>
Bananas					
2006	1,100	20.0	22,000	22,000	
2007	1,300	19.7	25,600	25,600	
2008	1,200	19.0	22,800	22,800	
Guavas					
2006	365	20.3	7,400		7,400
2007	170	25.3	4,300		4,300
2008 ¹					
Papayas					
2006	1,530	18.8	28,700	26,600	2,100
2007	1,310	25.5	33,400	31,200	2,200
2008	1,340	24.7	33,100	30,700	2,400
	<i>Acres</i>	<i>1,000 Pounds</i>	<i>Tons</i>	<i>Tons</i>	<i>Tons</i>
Pineapples ²					
2006	12,600		185,000	96,000	89,000
2007 ³					
2008 ³					

¹ Acreage, yield, and production estimates for 2008 will be published on May 12, 2009. Fresh and processed utilization estimates for 2008 will be published on July 8, 2009.

² Acreage is total acres in crop, not harvested acreage. Yield is not estimated. Production and processed utilization on a fresh weight basis.

³ Missing data not published to avoid disclosure of individual operations.

Hawaii Crops: Price and Value, 2006-2008

Crop and Year	Price			Value of Production		
	Fresh	Processed	All	Fresh	Processed	Total
	<i>Dollars per Pound</i>	<i>Dollars per Pound</i>	<i>Dollars per Pound</i>	<i>1,000 Dollars</i>	<i>1,000 Dollars</i>	<i>1,000 Dollars</i>
Bananas						
2006	0.490		0.490	10,780		10,780
2007	0.410		0.410	10,496		10,496
2008	0.440		0.440	10,032		10,032
Guavas						
2006		0.142	0.142		1,051	1,051
2007		0.157	0.157		675	675
2008 ¹						
Papayas						
2006	0.413	0.030	0.385	10,986	63	11,049
2007	0.417	0.038	0.392	13,010	84	13,094
2008	0.463	0.030	0.432	14,214	72	14,286
Pineapples ²	<i>Dollars per Ton</i>	<i>Dollars per Ton</i>	<i>Dollars per Ton</i>			
2006	630.00	148.00	398.00	60,480	13,172	73,652
2007 ³						
2008 ³						

¹ Estimates for 2008 will be published on July 8, 2009.

² Processed price is for fresh fruit delivered to processing plant door. Fresh price is for fruit at wholesale establishments for local sales and at shippers dock for mainland and foreign sales.

³ Missing data not published to avoid disclosure of individual operations.

**Apples: Unutilized Production by State
and United States, 2006-2008**

State	Unharvested Production			Harvested Not Sold		
	2006	2007	2008	2006	2007	2008
	<i>Million Pounds</i>	<i>Million Pounds</i>	<i>Million Pounds</i>	<i>Million Pounds</i>	<i>Million Pounds</i>	<i>Million Pounds</i>
AZ	0.1					
CO	1.0					1.0
CT	1.0	1.0	0.5			
GA				1.0		
ID	5.0					
IL	6.8	1.0	4.9	0.9	0.1	1.7
IN	4.5	2.0	1.5			
IA	0.9	1.0	0.8			
KY	0.4	0.2	0.8	0.2		
ME		3.0	2.0		1.0	
MD			0.3			0.2
MA	1.5	2.0	2.0			
MI	25.0					
MN	4.8	4.9	2.6	1.2	1.0	0.2
MO	1.0		0.1	1.0	0.1	0.1
NH	1.0	1.5	1.0			
NJ	1.0		4.0			
NY	10.0	10.0	50.0			
NC	1.5			1.5		
OH	1.0					
PA	3.0	3.0	10.0			
RI	0.2	0.2	0.1			
SC	0.5		0.6	0.1		0.1
TN	1.0		1.1			0.2
UT		1.0	0.4	0.1		
VT	4.0	5.0	3.0			
VA	6.0					
WV	2.0	3.0	3.0			1.0
WI	4.0	2.0	2.5		1.0	
US	87.2	40.8	91.2	6.0	3.2	4.5

**Miscellaneous Crops: Unutilized Production
by State and United States, 2006-2008**

Crop and State	Unharvested Production			Harvested Not Sold		
	2006	2007	2008	2006	2007	2008
	<i>Tons</i>	<i>Tons</i>	<i>Tons</i>	<i>Tons</i>	<i>Tons</i>	<i>Tons</i>
Peaches						
AL	2,000	400	300	2,000	100	700
AR	50		60	300	5	140
CO	500	2,000		500		1,000
GA			1,000	4,000	1,000	2,000
ID			160		140	420
IL	400	10	420	230		350
KY	130		100			
MD	20	100	10			
MA		50				
MI	200	1,400	300			
NJ		3,200	6,500			1,500
NY	200		200	70		100
NC	230		300	110		50
OH	240	50	50		50	50
OK	100	100	200			
OR	100	300	100			
PA	100			200		
SC	9,000	100	2,000	1,000	400	1,000
TN	100					
TX	830	1,350	1,430	10	150	170
UT	90	60	270	110	40	230
VA		50	70	50		
WV	100	100	400	100	100	200
US	14,390	9,270	13,870	8,680	1,985	7,910
	<i>Million Pounds</i>	<i>Million Pounds</i>	<i>Million Pounds</i>	<i>Million Pounds</i>	<i>Million Pounds</i>	<i>Million Pounds</i>
Cherries (Tart)						
MI		3.0		9.7		
NY			0.2			
UT	3.0	1.0	1.0			
WA				0.6	0.1	
WI				0.1	0.4	
US	3.0	4.0	1.2	10.4	0.5	
	<i>Barrels¹</i>	<i>Barrels¹</i>	<i>Barrels¹</i>	<i>Barrels¹</i>	<i>Barrels¹</i>	<i>Barrels¹</i>
Cranberries						
NJ				5,000		
WI	100,000					
US	100,000			5,000		

¹ A barrel weighs 100 pounds.

**Miscellaneous Crops: Unutilized Production
by State and United States, 2006-2008**

Crop and State	Unharvested Production			Harvested Not Sold		
	2006	2007	2008	2006	2007	2008
	<i>Tons</i>	<i>Tons</i>	<i>Tons</i>	<i>Tons</i>	<i>Tons</i>	<i>Tons</i>
Apricots						
CA			4,100			
UT	15		10	10		20
US	15		4,110	10		20
Cherries (Sweet)						
CA				1,900	3,200	3,200
ID	40			230		100
MI			200			
MT	1,700	140	10	120	120	100
NY	90	10	130	10		
OR	2,000	1,000	3,600	500		
UT	40			10		
US	3,870	1,150	3,940	2,770	3,320	3,400
Grapes						
AR	100					
MI	5,000					
NY	2,000					
NC	100					
OH			310			
PA			13,000			
TX	3,900	800	200			
VA			70	200	200	130
US	11,100	800	13,580	200	200	130
Kiwifruit						
CA				700	800	1,000
Pears						
CA	10,000					
CO	300					
MI	100	400	50			
NY	400	700	900			
PA	100					
UT	15		10			10
US	10,915	1,100	960			10
Prunes & Plums						
ID	50	80		50		20
MI	200	1,100				
OR	2,000					
US	2,250	1,180		50		20
Prunes						
CA ¹	3,000	500		6,000	1,500	

¹ CA prunes are on a dried basis.

**Berries: Unutilized Production by State
and United States, 2006-2008**

Crop and State	Unharvested Production			Harvested Not Sold		
	2006	2007	2008	2006	2007	2008
	<i>1,000 Pounds</i>	<i>1,000 Pounds</i>	<i>1,000 Pounds</i>	<i>1,000 Pounds</i>	<i>1,000 Pounds</i>	<i>1,000 Pounds</i>
Red Raspberries OR	50					
Black Raspberries OR		50				
Cultivated Blueberries						
AL	110	50	40	10		
AR	50					
FL	40					
IN		200				
NY	200	200	200			
US	400	450	240	10		
Boysenberries OR	100	500	140			
Loganberries OR	5					
Cultivated Blackberries (OR)						
Marion		3,000	800			
Other	200	2,000	500			
All	200	5,000	1,300			

**Apples for Fresh Use: Prices Received, United States
July 2004 - December 2008¹**

Year	Jul	Aug	Sep	Oct	Nov	Dec	Jan ²	Feb	Mar	Apr	May	Jun
	<i>Dollars Per Pound</i>	<i>Dollars Per Pound</i>	<i>Dollars Per Pound</i>	<i>Dollars Per Pound</i>	<i>Dollars Per Pound</i>	<i>Dollars Per Pound</i>	<i>Dollars Per Pound</i>	<i>Dollars Per Pound</i>	<i>Dollars Per Pound</i>	<i>Dollars Per Pound</i>	<i>Dollars Per Pound</i>	<i>Dollars Per Pound</i>
2004	0.243	0.227	0.246	0.232	0.214	0.185	0.177	0.161	0.139	0.127	0.123	0.116
2005	0.098	0.177	0.264	0.257	0.255	0.217	0.217	0.206	0.199	0.193	0.189	0.228
2006	0.283	0.360	0.382	0.347	0.348	0.287	0.286	0.285	0.284	0.284	0.294	0.292
2007	0.305	0.340	0.403	0.379	0.403	0.350	0.355	0.348	0.344	0.338	0.362	0.412
2008	0.446	0.534	0.536	0.442	0.342	0.296						

¹ Equivalent packinghouse-door returns for CA, MI, NY, and WA; price at point of first sale for other States.

² January for the following year.

**Apples for Fresh Use: Monthly Average Prices, by State and United States,
July 2007 - August 2008^{1,2}**

State	2007						2008
	Jul	Aug	Sep	Oct	Nov	Dec	Jan
	<i>Dollars per Pound</i>	<i>Dollars per Pound</i>	<i>Dollars per Pound</i>	<i>Dollars per Pound</i>	<i>Dollars per Pound</i>	<i>Dollars per Pound</i>	<i>Dollars per Pound</i>
CA		0.520	0.422	0.412	0.339		
MI		0.325	0.325	0.315	0.285	0.280	0.275
NY			0.358	0.343	0.343	0.336	0.322
OH	0.550	0.500	0.465	0.430	0.450	0.440	0.410
PA		0.360	0.360	0.330	0.260	0.220	0.263
VA		0.273	0.275	0.304	0.295	0.295	0.294
WA	0.293	0.298	0.421	0.395	0.430	0.362	0.371
US	0.305	0.340	0.403	0.379	0.403	0.350	0.355
State	2008						
	Feb	Mar	Apr	May	Jun	Jul	Aug
	<i>Dollars per Pound</i>	<i>Dollars per Pound</i>	<i>Dollars per Pound</i>	<i>Dollars per Pound</i>	<i>Dollars per Pound</i>	<i>Dollars per Pound</i>	<i>Dollars per Pound</i>
CA							0.560
MI	0.275	0.275	0.260	0.250			
NY	0.323	0.332	0.347	0.375	0.383		
OH	0.425	0.370	0.400	0.515	0.560		0.525
PA	0.268	0.264					0.496
VA	0.280	0.280					
WA	0.359	0.352	0.340	0.363	0.416	0.446	0.530
US	0.348	0.344	0.338	0.362	0.412	0.446	0.534

¹ Equivalent packinghouse-door returns for CA, MI, NY, and WA; price at point of first sale for Other States.

² Prices for July and August 2008 are preliminary for all States and the U.S. except WA. These two months represent the start of the 2008 crop marketing season in most States, but in WA they are the final months of the 2007 crop marketing season.

**Peaches for Fresh Use: Monthly Prices Received,
United States, May 2004-September 2008**¹

State	May	Jun	Jul	Aug	Sep
	<i>Dollars per Ton</i>	<i>Dollars per Ton</i>	<i>Dollars per Ton</i>	<i>Dollars per Ton</i>	<i>Dollars per Ton</i>
2004	918	476	412	427	522
2005	756	596	576	743	622
2006	(²)	809	721	746	589
2007	937	562	579	593	563
2008	960	442	490	513	470

¹ Equivalent packinghouse-door returns for CA and WA; price at point of first sale for Other States.

² Insufficient sales to establish a price.

**Pears for Fresh Use: Monthly Prices Received,
United States, July 2004 - December 2008**¹

Year	Jul	Aug	Sep	Oct	Nov	Dec	Jan ²	Feb	Mar	Apr	May	Jun
	<i>Dollars Per Ton</i>	<i>Dollars Per Ton</i>	<i>Dollars Per Ton</i>	<i>Dollars Per Ton</i>	<i>Dollars Per Ton</i>	<i>Dollars Per Ton</i>	<i>Dollars Per Ton</i>	<i>Dollars Per Ton</i>	<i>Dollars Per Ton</i>	<i>Dollars Per Ton</i>	<i>Dollars Per Ton</i>	<i>Dollars Per Ton</i>
2004	325	381	390	432	434	437	445	465	458	465	482	513
2005	639	583	541	440	451	423	404	392	339	355	419	596
2006	759	286	288	568	573	563	541	517	537	597	651	687
2007	584	374	380	526	514	557	560	552	537	527	525	654
2008	710	588	554	569	538	561						

¹ Equivalent packinghouse-door returns for CA, NY, and WA; price at point of first sale for Other States.

² January for the following year.

**Grapes for Fresh Use: Monthly Prices Received,
United States, May 2004 - December 2008**

Year	May	Jun	Jul	Aug	Sep	Oct	Nov	Dec
	<i>Dollars Per Ton</i>	<i>Dollars Per Ton</i>	<i>Dollars Per Ton</i>	<i>Dollars Per Ton</i>	<i>Dollars Per Ton</i>	<i>Dollars Per Ton</i>	<i>Dollars Per Ton</i>	<i>Dollars Per Ton</i>
2004	1,540	830	570	560	680	830	1,030	1,160
2005	1,010	910	530	530	610	600	490	390
2006	(¹)	2,420	1,030	880	910	830	930	1,310
2007	(¹)	770	660	680	790	940	1,200	1,710
2008	420	590	660	530	480	370	360	300

¹ Insufficient sales to establish a price.

**Pears: Equivalent On-tree Returns,
by State and United States, 2006-2008**

State and Variety	Fresh			Processed			All		
	2006	2007	2008	2006	2007	2008	2006	2007	2008
	<i>Dollars per Ton</i>	<i>Dollars per Ton</i>	<i>Dollars per Ton</i>	<i>Dollars per Ton</i>	<i>Dollars per Ton</i>	<i>Dollars per Ton</i>	<i>Dollars per Ton</i>	<i>Dollars per Ton</i>	<i>Dollars per Ton</i>
Bartlett									
CA	144	301	466	183	184	278	171	221	345
OR	431	417	452	136	119	126	276	276	292
WA	572	473	481	122	139	137	269	274	274
US	366	394	469	153	160	207	226	249	311
Other ¹									
US	443	383	496						

¹ Pears other than Bartlett; missing data unavailable or not published to avoid disclosure.

**Apricots and Plums: Equivalent Returns,
California, 2006-2008**

	Equivalent First Delivery Point Returns			Equivalent On-tree Returns		
	2006	2007	2008	2006	2007	2008
	Plums					
	<i>Dollars per Ton</i>	<i>Dollars per Ton</i>	<i>Dollars per Ton</i>	<i>Dollars per Ton</i>	<i>Dollars per Ton</i>	<i>Dollars per Ton</i>
All Sales	691	668	356	608	585	273
	Apricots					
	<i>Dollars per Ton</i>	<i>Dollars per Ton</i>	<i>Dollars per Ton</i>	<i>Dollars per Ton</i>	<i>Dollars per Ton</i>	<i>Dollars per Ton</i>
Fresh	1,510	742	775	1,343	575	605
Processing	318	307	341	187	176	210
All Sales	593	431	472	453	290	329

**Grapes: Equivalent First Delivery Point Returns,
by Utilization and Variety Group, California, 2006-2008 ¹**

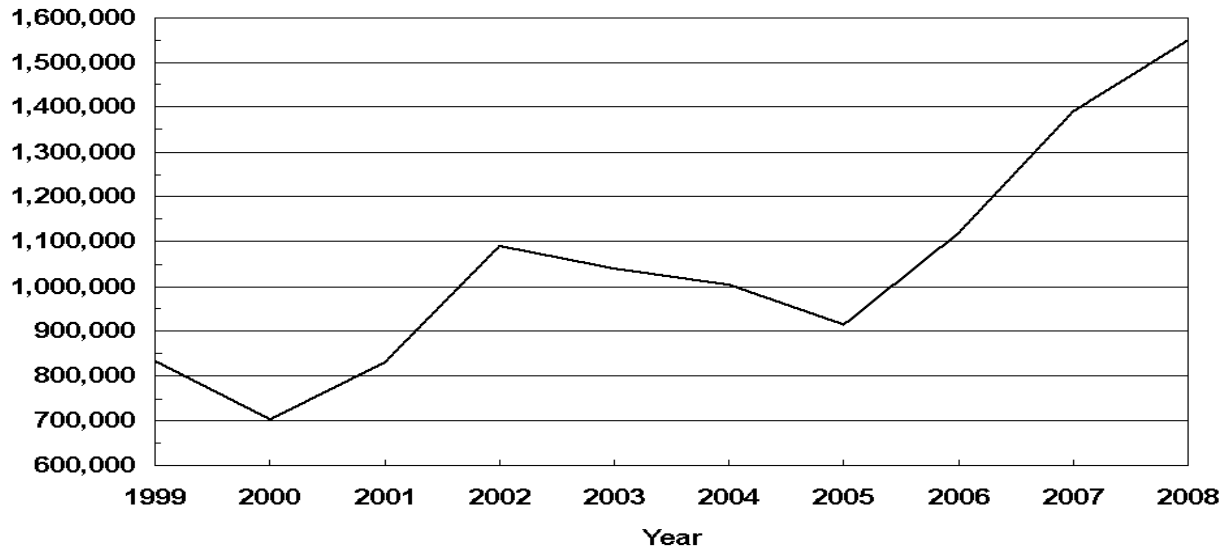
Variety and Utilization	2006	2007	2008
	<i>Dollars per Ton</i>	<i>Dollars per Ton</i>	<i>Dollars per Ton</i>
Raisin Varieties Dried by Variety or Type			
Natural Thompson Seedless	1,080	1,010	
Natural Muscats	(²)	(²)	
Natural Sultanas	890	930	
Natural Zante Currents	1,110	990	
Dehydrated, All Types	1,350	1,530	

¹ Missing data are not available.

² Insufficient sales to establish a price.

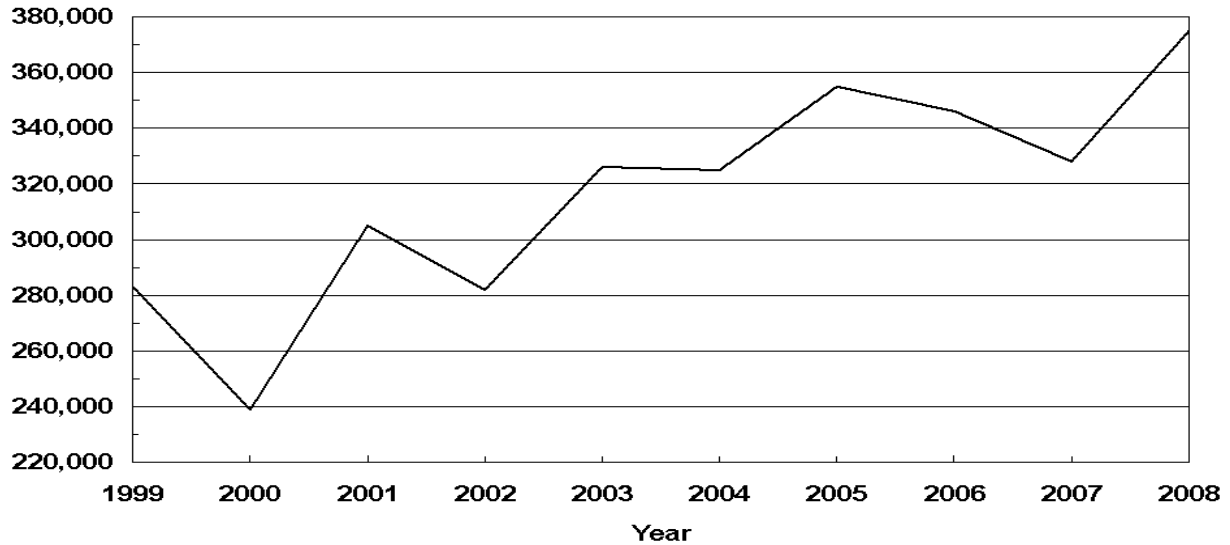
California Almonds Utilized Production 1999-2008

(000) Pounds
Shelled Basis



California Walnuts (English) Utilized Production 1999-2008

Tons
In-Shell Basis



**Tree Nuts: Acreage, Yield, Production, Price and Value
by Crop, and State 2006-2008**

Crop, State, and Year	Bearing Acreage	Yield per Acre ¹	Utilized Production	Price per Unit	Value of Utilized Production
	<i>Acres</i>	<i>Pounds</i>	<i>1,000 Pounds</i>	<i>Dollars per Pound</i>	<i>1,000 Dollars</i>
Almonds ² (<i>Shelled Basis</i>) ³ CA					
2006	610,000	1,840	1,120,000	2.060	2,258,790
2007	640,000	2,170	1,390,000	1.750	2,401,875
2008	660,000	2,350	1,550,000	1.450	2,228,650
	<i>Acres</i>	<i>Tons</i>	<i>Tons</i>	<i>Dollars per Ton</i>	<i>1,000 Dollars</i>
Hazelnuts (<i>In-Shell Basis</i>) OR					
2006	28,200	1.52	43,000	1,080.00	46,440
2007	28,600	1.29	37,000	2,040.00	75,480
2008	28,400	1.13	32,000	1,630.00	52,160
	<i>Acres</i>	<i>Pounds</i>	<i>1,000 Pounds</i>	<i>Dollars per Pound</i>	<i>1,000 Dollars</i>
Macadamia Nuts (<i>In-Shell Basis</i>) HI					
2006	15,000	3,870	58,000	0.670	38,860
2007	15,000	2,730	41,000	0.600	24,600
2008	16,000	3,380	54,000	0.580	31,320
	<i>Acres</i>	<i>Pounds</i>	<i>1,000 Pounds</i>	<i>Dollars per Pound</i>	<i>1,000 Dollars</i>
Pistachios (<i>In-Shell Basis</i>) CA					
2006	112,000	2,130	238,000	1.890	449,820
2007	115,000	3,620	416,000	1.410	586,560
2008	118,000	2,360	278,000	1.940	539,320
	<i>Acres</i>	<i>Tons</i>	<i>Tons</i>	<i>Dollars per Ton</i>	<i>1,000 Dollars</i>
Walnuts (English) (<i>In-Shell Basis</i>) CA					
2006	216,000	1.60	346,000	1,630.00	563,980
2007	218,000	1.50	328,000	2,290.00	751,120
2008 ⁴	218,000	1.72	375,000		

¹ Yield is based on utilized production.

² Price and value are based on the edible portion of the crop only. Production includes inedible quantities of no value as follows: 2006 - 23.5 million pounds; 2007 - 17.5 million pounds; 2008 - 13.0 million pounds.

³ Shelling ratios are: 2006 - 0.585; 2007 - 0.573; 2008 - 0.573.

⁴ Price and value for 2008 will be published on July 8, 2009.

**Tree Nuts: Utilization and Meat Production
by Crop, State, and United States, 2006-2008**

Crop, State, and Year	Utilized Production		Meat Production of Nuts Sold Shelled
	Sold In-Shell	Sold Shelled ¹	
	<i>Tons</i>	<i>Tons</i>	<i>Tons</i>
Hazelnuts			
OR			
2006	24,000	19,000	8,200
2007	24,900	12,100	4,800
2008 ²			
	<i>1,000 Pounds</i>	<i>1,000 Pounds</i>	<i>1,000 Pounds</i>
Pecans			
US			
2006	20,400	186,900	82,400
2007	69,305	318,000	148,000
2008 ²			
	<i>1,000 Pounds</i>	<i>1,000 Pounds</i>	<i>1,000 Pounds</i>
Pistachios			
CA			
2006	201,000	37,000	18,500
2007	333,000	83,000	41,300
2008	231,000	47,000	23,600
	<i>1,000 Pounds</i>	<i>1,000 Pounds</i>	<i>1,000 Pounds</i>
Walnuts (English)			
CA			
2006	71,000	275,000	118,000
2007	66,000	262,000	112,000
2008 ²			

¹ In-shell basis.

² Estimates for 2008 will be published on July 8, 2009.

**Pecans: Production
by Variety, State, and United States, 2006-2008**

Variety and State	Utilized Production (In-Shell Basis)		
	2006	2007	2008
	<i>1,000 Pounds</i>	<i>1,000 Pounds</i>	<i>1,000 Pounds</i>
Improved Varieties ¹			
AL	5,400	10,000	6,300
AZ	14,000	23,000	16,500
AR	1,150	1,500	550
CA	3,400	4,400	3,500
FL	200	1,700	1,400
GA	36,000	135,000	65,000
LA	3,500	3,000	1,500
MS	2,000	2,200	900
MO	160	2	140
NM	47,000	74,000	45,000
NC	420	160	600
OK	5,000	3,000	2,000
SC	900	1,500	1,800
TX	33,000	44,000	20,000
US	152,130	303,462	165,190
Native and Seedling			
AL	600	2,000	700
AR	1,050	800	450
FL	300	200	300
GA	6,000	15,000	2,000
KS	2,000	500	1,200
LA	17,500	11,000	3,500
MS	500	800	400
MO	940	3	540
NC	80	40	100
OK	12,000	27,000	6,000
SC	200	500	700
TX	14,000	26,000	10,000
US	55,170	83,843	25,890
All Pecans			
AL	6,000	12,000	7,000
AZ	14,000	23,000	16,500
AR	2,200	2,300	1,000
CA	3,400	4,400	3,500
FL	500	1,900	1,700
GA	42,000	150,000	67,000
KS	2,000	500	1,200
LA	21,000	14,000	5,000
MS	2,500	3,000	1,300
MO	1,100	5	680
NM	47,000	74,000	45,000
NC	500	200	700
OK	17,000	30,000	8,000
SC	1,100	2,000	2,500
TX	47,000	70,000	30,000
US	207,300	387,305	191,080

¹ Budded, grafted, or topworked varieties.

**Pecans: Price and Value
by Variety, State, and United States, 2006-2008**

Variety and State	Price per Pound			Value of Utilized Production		
	2006	2007	2008	2006	2007	2008
	<i>Dollars</i>	<i>Dollars</i>	<i>Dollars</i>	<i>1,000 Dollars</i>	<i>1,000 Dollars</i>	<i>1,000 Dollars</i>
Improved Varieties ¹						
AL	1.260	0.890	1.350	6,804	8,900	8,505
AZ	1.750	1.600	1.500	24,500	36,800	24,750
AR	1.330	1.090	1.360	1,530	1,635	748
CA	1.720	1.780	1.180	5,848	7,832	4,130
FL	1.800	1.000	2.000	360	1,700	2,800
GA	1.640	1.100	1.510	59,040	148,500	98,150
LA	1.400	1.200	1.250	4,900	3,600	1,875
MS	1.300	1.150	1.300	2,600	2,530	1,170
MO	1.650	1.200	1.700	264	2	238
NM	1.850	1.300	1.450	86,950	96,200	65,250
NC	1.350	1.510	1.470	567	242	882
OK	1.700	1.350	1.600	8,500	4,050	3,200
SC	1.790	1.160	1.050	1,611	1,740	1,890
TX	1.790	1.350	1.540	59,070	59,400	30,800
US	1.730	1.230	1.480	262,544	373,131	244,388
Native and Seedling						
AL	0.970	0.660	0.890	582	1,320	623
AR	1.150	0.760	1.020	1,208	608	459
FL	1.500	0.700	1.100	450	140	330
GA	1.210	0.720	1.300	7,260	10,800	2,600
KS	1.300	0.900	1.500	2,600	450	1,800
LA	0.900	0.700	0.850	15,750	7,700	2,975
MS	1.000	0.700	1.000	500	560	400
MO	1.350	1.000	1.350	1,269	3	729
NC	1.000	0.810	0.770	80	32	77
OK	1.150	0.750	0.700	13,800	20,250	4,200
SC	1.050	0.900	0.720	210	450	504
TX	1.160	0.700	1.090	16,240	18,200	10,900
US	1.090	0.722	0.989	59,949	60,513	25,597
All Pecans						
AL	1.230	0.852	1.300	7,386	10,220	9,128
AZ	1.750	1.600	1.500	24,500	36,800	24,750
AR	1.240	0.975	1.210	2,738	2,243	1,207
CA	1.720	1.780	1.180	5,848	7,832	4,130
FL	1.620	0.968	1.840	810	1,840	3,130
GA	1.580	1.060	1.500	66,300	159,300	100,750
KS	1.300	0.900	1.500	2,600	450	1,800
LA	0.983	0.807	0.970	20,650	11,300	4,850
MS	1.240	1.030	1.210	3,100	3,090	1,570
MO	1.390	1.000	1.420	1,533	5	967
NM	1.850	1.300	1.450	86,950	96,200	65,250
NC	1.290	1.370	1.370	647	274	959
OK	1.310	0.810	0.925	22,300	24,300	7,400
SC	1.660	1.100	0.958	1,821	2,190	2,394
TX	1.600	1.110	1.390	75,310	77,600	41,700
US	1.560	1.120	1.410	322,493	433,644	269,985

¹ Budded, grafted, or topworked varieties.

Definition of Terms

Apples, Commercial Crop refers to orchards of 100 or more bearing age trees.

Bearing Acreage - An orchard, grove, or vineyard is considered bearing when it reaches an age when it can normally be expected to produce a commercially significant quantity of the crop. Bearing age is a function of many factors including variety, rootstock, year planted, etc. Bearing acreage is primarily based upon periodic orchard surveys. In non-survey years, bearing acreage is based on trends, county extension service data, end-of-year production surveys, and other indications.

Prices are a marketing year average for all methods of sale. For a crop sold for both fresh market and processing, the **Marketing Year Average Price (MYA)** is a weighted average of the fresh and processing price.

Prices for fresh fruit are the average prices producers receive at the point of first sale. This is commonly referred to as the **average price as sold**. Since the point of first sale is not the same for all producers, prices for the various methods of sale are weighted by the quantity sold. For example, in a given State, part of the fruit is sold free on board (F.O.B.) packed by growers, part is sold as bulk fruit at the packinghouse door, and some is sold retail at roadside stands. The fresh fruit **average price as sold** is a weighted average of the average price for each method of sale. The exception is fresh fruit sales in California, Washington, and New York (apples only) which are equivalent returns at packinghouse door. The equivalent packinghouse returns represent adjusted prices.

F.O.B. packed prices are adjusted to an equivalent incoming packinghouse door price by subtracting all costs that accumulate between the incoming packinghouse door and the F.O.B. price. These costs include grading, packing, inspecting fees, selling, and other costs.

Prices for fruit sold for processing are equivalent returns for fruit delivered to the processing plant door except for cranberries, California olives, and freestone peaches, which are priced at the first delivery point.

Crop value estimates in this report cover the marketing season or crop year and should not be confused with cash receipts from these crops which are on a calendar year.

Total Production is the quantity actually harvested plus quantities which would have been acceptable for fresh market or processing but were not harvested because of economic or natural reasons.

Unutilized Production is the difference between total and utilized production which is marketable fruit not harvested for economic or natural reasons and harvested fruit not sold or utilized.

Harvested not sold is fruit of marketable quality that was picked but not sold for various reasons. Harvested not sold amounts up to 2 percent of total production are considered normal seasonal losses and are excluded from total production. Reported values are above and beyond these normal seasonal losses.

Unharvested Production is marketable fruit produced, but not harvested for various reasons. Unharvested amounts up to 2 percent of total production are considered normal seasonal losses and are excluded from total production. Reported values are above and beyond these normal seasonal losses.

Utilization refers to first utilization, not necessarily final utilization. For example, frozen fruit includes some fruit that may be later used for making preserves. Grade-outs for fresh market fruit which are processed are included in the processing quantity. Fruit graded-out from canning or freezing and utilized for juice is included with juice.

Utilized Production is the amount sold plus the quantities used at home or held in storage.

Yield per Acre is based on total production which includes unharvested production and fruit harvested but not sold due to marketing conditions.

State Value of Utilized Production and MYA Price Computations

The following procedure is used to compute State Values of Utilized Production and MYA Prices:

Fresh Market Value = Fresh Market MYA
Times
Fresh Market Utilization

Process Market Value = Process Market MYA
Times
Process Market Utilization

"All" Sales Value = Fresh Market Value
Plus
Process Market Value

"All" Sales MYA = "All" Sales Value
Divided By
"All" Sales Utilization

For commodities with components not identified by market channel, substitute breakdown name for fresh/processing market and use the same procedure.

U.S. MYA Price Computations

The following procedure is used to compute the U.S. MYA Prices:

Fresh Market MYA = Fresh Market Value For All States
Divided By
Fresh Market Utilization For All States

Process Market MYA = Process Market Value For All States
Divided By
Process Market Utilization For All States

"All" Sales MYA = Sales Value For All States
Divided By
Sales Utilization For All States

Marketing Seasons for Noncitrus Fruits ¹

Apples

Eastern States, excluding GA, NJ, and SC.....	August - June
Central States, excluding IA, KY, MN, MO, TN, and WI.....	July - May
Western States, excluding AZ.....	August - June
All Other States.....	August - December

Apricots

CA.....	May 15 - July 5
UT.....	June 10 - August 15
WA.....	June 20 - August 1

Avocados

CA.....	November 1 - October 31
FL.....	June 20 - March 1
HI.....	January 1 - December 31

Bananas January 1 - December 31

Cherries, Sweet

CA.....	April 25 - June 15
MT.....	July 20 - August 20
All Other States.....	June - July

Cherries, Tart June 25 - August 15

Cranberries September 15 - January 1

Dates August 15 - March 15

Figs..... June 5 - October 30

Grapes

Table (CA).....	May 25 - July 20
Raisin (CA).....	June 5 - July 31
Wine (CA and WA).....	August 15 - December 15
Juice (WA).....	September 15 - November 1
All Other States.....	July - October

Guavas January 1 - December 31

Kiwifruit..... October 1 - May 31

¹See footnote on next page.

Marketing Seasons for Noncitrus Fruits ¹ (continued)

Nectarines	April 30 - October 15
Olives	
Fresh, Canned, and Other Processing	August 1 - July 31
Crushed for Oil	December 1 - November 30
Papayas	January 1 - December 31
Peaches	
Clingstone (CA).....	July 10 - September 15
Freestone (CA).....	April 20 - October 10
GA and SC.....	May - August
All Other States.....	July - September
Pears	
Bartlett (CA, OR, and WA)	July - December
Other (CA, OR, and WA)	July - June
All Other States.....	August - November
Pineapples	January 1 - December 31
Plums (CA)	May 15 - October 20
Prunes, Dried (CA)	August 20 - April 15
Prunes and Plums	
Fresh and Canning (ID, MI, OR, WA)	August 15 - October 15

Marketing Seasons for Tree Nuts ¹

Almonds	August 5 - November 15
Hazelnuts	October 1 - November 30
Macadamia Nuts	July 1 - June 30
Pecans	October 1 - March 31
Pistachios	September 30 - January 30
Walnuts	September 15 - November 10

¹ For detail by States, see Agricultural Handbook No. 729, "Fruits and Tree Nuts: Blooming, Harvesting, and Marketing Dates," Dec 2006.

Reliability of January Noncitrus Fruit Production Estimates

Reliability: To assist users in evaluating the reliability of the January noncitrus fruit total production estimates, the "Root Mean Square Error," a statistical measure based on past performance, is computed. The deviation between the first January total production estimate and the final estimate is expressed as a percentage of the final estimate. The average of squared percentage deviations for the latest 20-year period is computed. The square root of the average becomes statistically the "Root Mean Square Error." Probability statements can be made concerning expected differences in the current estimate relative to the final end-of-season estimate, assuming that factors affecting this year's estimate are not different from those influencing recent years. For example, the "Root Mean Square Error" for the January apple total production estimate is 2.6 percent. This means that chances are 2 out of 3 that the current production estimate will not be above or below the final estimate by more than 2.6 percent. Chances are 9 out of 10 (90 percent confidence level) that the difference will not exceed 4.5 percent.

Also, shown in the following table is a 20-year record for selected crops of the differences between the first January total production estimate and the final estimate. Using apples again as an example, changes between the first January estimate and the final estimate during the last 20 years have averaged 105.1 thousand tons, ranging from 6.1 thousand tons to 351.4 thousand tons. The first January estimate has been below the final estimate 7 times and above 13 times. This does not imply that the January estimate this year is likely to understate or overstate the final production.

Reliability of Selected Noncitrus Fruit Estimates

Crop	Unit	Root Mean Square Error		20-Year Record of Differences Between Initial Estimate and Final Estimate				
		Percent	90 Percent Confidence Interval	Quantity			Years	
				Average	Smallest	Largest	Below Final	Above Final
				<i>1,000</i>	<i>1,000</i>	<i>1,000</i>	<i>Number</i>	<i>Number</i>
Apples	Tons	2.6	4.5	105.1	6.1	351.4	7	13
Grapes	Tons	4.0	7.0	206.7	8.6	838.8	18	2
Peaches	Tons	1.3	2.3	13.2	0.2	29.9	11	9
Pears	Tons	2.9	4.9	19.6	1.0	63.9	13	7

Information Contacts

Listed below are the commodity statisticians in the Crops Branch of the National Agricultural Statistics Service to contact for additional information.

Lance Honig, Chief (202) 720-2127

Field Crops Section

Jacqueline Moore, Head (202) 720-2127
Todd Ballard - Wheat, Rye (202) 720-8068
Shiela Corley - Cotton, Cotton Ginnings (202) 720-5944
Don Gephart - Hay, Oats, Sorghum (202) 690-3234
Ty Kalas - Corn, Proso Millet, Flaxseed (202) 720-9526
Jacqueline Moore - Crop Weather, Barley, Sugar Crops (202) 720-2127
Anthony Prillaman - Peanuts, Rice (202) 720-7688
Travis Thorson - Soybeans, Sunflower, Other Oilseeds (202) 720-7369

Fruits, Vegetables & Special Crops Section

Jorge Garcia-Pratts, Head (202) 720-2127
Leslie Colburn - Berries, Grapes, Maple Syrup, Tobacco (202) 720-7235
Debbie Flippin - Fresh and Processing Vegetables,
Onions, Strawberries (202) 720-2157
Mike Jacobsen - Apples, Apricots, Cherries, Cranberries,
Plums, Prunes (202) 720-4288
Dawn Keen - Floriculture, Nursery, Tree Nuts (202) 720-4215
Dan Norris - Austrian Winter Peas, Dry Edible Peas,
Lentils, Mint, Mushrooms, Peaches, Pears,
Wrinkled Seed Peas (202) 720-3250
Suzanne Avilla - Citrus, Coffee, Tropical Fruits (202) 720-5412
Faye Propsom - Dry Beans, Potatoes, Sweet Potatoes (202) 720-4285
Kim Ritchie - Hops (360) 902-1940

ACCESS TO REPORTS!!

For your convenience, there are several ways to obtain NASS reports, data products, and services:

INTERNET ACCESS

All NASS reports are available free of charge on the worldwide Internet. For access, connect to the Internet and go to the NASS Home Page at: www.nass.usda.gov.

E-MAIL SUBSCRIPTION

All NASS reports are available by subscription free of charge direct to your e-mail address. Starting with the NASS Home Page at www.nass.usda.gov, under the right navigation, *Receive reports by Email*, click on **National** or **State**. Follow the instructions on the screen.

PRINTED REPORTS OR DATA PRODUCTS

CALL OUR TOLL-FREE ORDER DESK: 800-999-6779 (U.S. and Canada)
Other areas, please call 703-605-6220 FAX: 703-605-6900
(Visa, MasterCard, check, or money order acceptable for payment.)

ASSISTANCE

For **assistance** with general agricultural statistics or further information about NASS or its products or services, contact the **Agricultural Statistics Hotline** at **800-727-9540**, 7:30 a.m. to 4:00 p.m. ET, or e-mail: nass@nass.usda.gov.

The U.S. Department of Agriculture (USDA) prohibits discrimination in all its programs and activities on the basis of race, color, national origin, age, disability, and where applicable, sex, marital status, familial status, parental status, religion, sexual orientation, genetic information, political beliefs, reprisal, or because all or a part of an individual's income is derived from any public assistance program. (Not all prohibited bases apply to all programs.) Persons with disabilities who require alternative means for communication of program information (Braille, large print, audiotape, etc.) should contact USDA's TARGET Center at (202) 720-2600 (voice and TDD).

To file a complaint of discrimination, write to USDA, Director, Office of Civil Rights, 1400 Independence Avenue, S.W., Washington, D.C. 20250-9410, or call (800) 795-3272 (voice) or (202) 720-6382 (TDD). USDA is an equal opportunity provider and employer.



Global Agriculture & Rural America in Transition

Food & Energy: Expectations & Realities

February 26-27, 2009

Crystal Gateway Marriott Hotel
Arlington, Virginia

www.usda.gov/oce/forum

Early Bird Registration \$350 until January 23, 2009 * \$375 after January 23

Topical Sessions Will Address:

- *Commodity Markets
- *Trade & Farm Policy
- *Conservation
- *Risk Management
- *Food Prices
- *Rural America
- *Food Safety & Food Security
- *Energy
- *Biotechnology
- *World Markets