

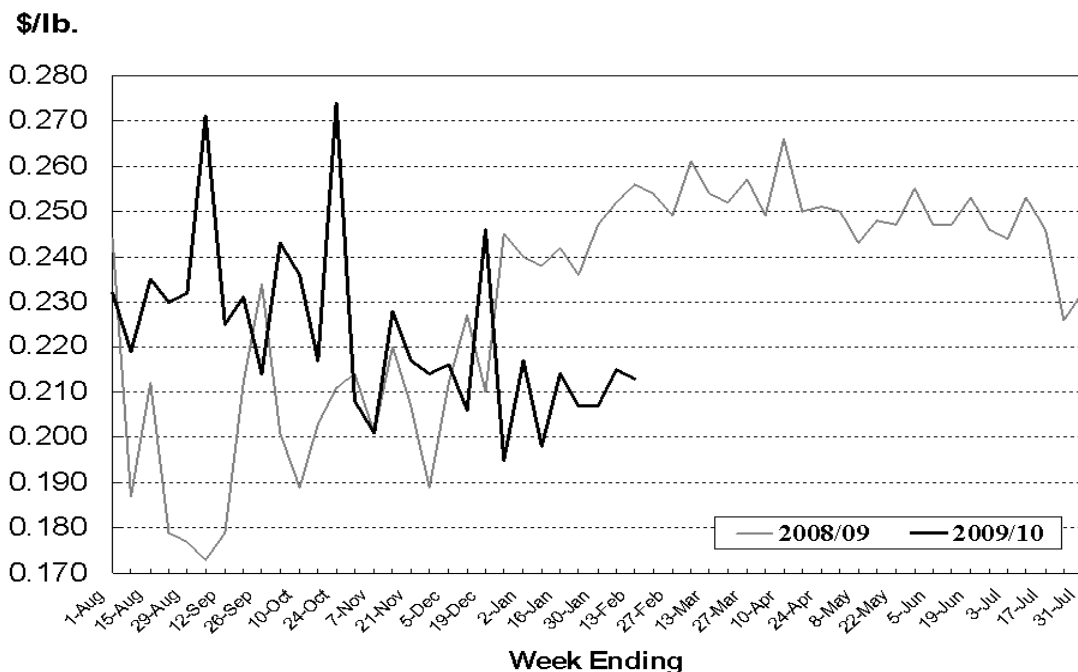
Released February 19, 2010, by the National Agricultural Statistics Service (NASS), Agricultural Statistics Board, U.S. Department of Agriculture. For information on *Peanut Prices* call Suzanne Avilla at (202) 720-7688, office hours 7:00 a.m. to 4:00 p.m. ET.

Peanut Price Highlights

Peanut prices received by farmers for all farmer stock peanuts averaged 21.3 cents per pound for the week ending February 13. The price per pound decreased 0.2 cent from the previous week. Marketings of all farmer stock peanuts for the week ending February 13 totaled 71.4 million pounds, down 17.2 million pounds from the previous week.

The average price of **Runner** type peanuts was 19.9 cents per pound for the week ending February 13, down 0.1 cent from the previous week. Marketings of Runner type peanuts were 49.2 million pounds, down 15.3 million pounds from the previous week.

U.S. All Peanut Prices



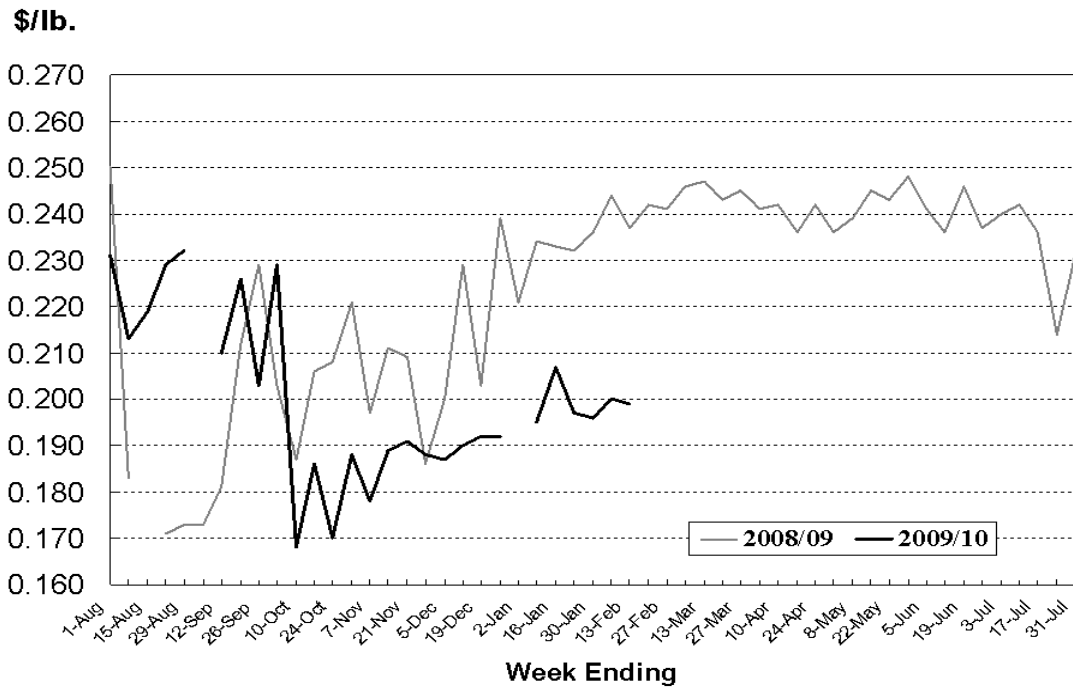
Peanuts: Prices and Marketings by Type and Week, United States

Item and Type	Week Ending				
	Feb 13, 2010	Feb 6, 2010	Jan 30, 2010	Jan 23, 2010	Jan 16, 2010
Average Price	<i>Dollars per Pound</i>	<i>Dollars per Pound</i>	<i>Dollars per Pound</i>	<i>Dollars per Pound</i>	<i>Dollars per Pound</i>
Runners	0.199	0.200	0.196	0.197	0.207
Spanish		*	0.192	*	*
Valencias		*		*	*
Virginias	0.242	0.229	0.231	0.239	0.230
All	0.213	0.215	0.207	0.207	0.214
Marketings ¹	<i>1,000 Pounds</i>	<i>1,000 Pounds</i>	<i>1,000 Pounds</i>	<i>1,000 Pounds</i>	<i>1,000 Pounds</i>
Runners	49,230	64,555	75,397	49,717	25,339
Spanish	0	*	10,138	*	*
Valencias	0	*	0	*	*
Virginias	22,133	21,009	38,211	16,021	10,962
All	71,363	88,576	123,746	65,900	36,301

* Not published to avoid disclosing individual operations.

¹ Quantity purchased from farmers.

U.S. Runner Type Peanut Prices



Survey Procedures: Price and marketing information included in this report is provided the beginning of each week by first buyers of farmer stock peanuts. Each week, respondents are asked to report total pounds purchased (marketings) from farmers and total dollars paid, by type (Runners, Spanish, Valencias, and Virginias), for the previous week. The reported data is to include all qualities and grades and excludes peanuts used for seed. Data are collected by telephone, fax, and internet each week for the previous week. The peanut price survey is an enumeration of all known first buyers of farmer stock peanuts from growers. Every effort is made to obtain a report from all buyers.

Summary and Estimation Procedures: Since a complete report is not received from all buyers each week, the reported quantities purchased and total dollars paid for each type are expanded to account for non-response. These expanded data are then used to calculate the weighted average price for each type. Estimates of price and marketings are prepared by the Agricultural Statistics Board and reviewed for reasonableness with recent historic estimates and between the different peanut types.

Revisions: Price and marketing estimates for the prior 3 weeks are subject to revision based on late reports. At the end of the marketing year, all buyers will have an opportunity to update or provide any late data for any week during the marketing year. After this data is incorporated with previously reported data, revised weekly estimates will be published for the entire marketing year.

Reliability: The peanut price survey is subject to non-sampling errors such as omission, duplication, imputation for missing data, and mistakes in reporting, recording, and processing the data. These errors cannot be measured directly, but are minimized through rigid quality controls in the data collection process and a careful review of all reported data for consistency and reasonableness.

ACCESS TO REPORTS!!

For your convenience, there are several ways to obtain NASS reports, data products, and services:

INTERNET ACCESS

All NASS reports are available free of charge. For free access, connect to the Internet and go to the NASS Home Page at: www.nass.usda.gov.

E-MAIL SUBSCRIPTION

All NASS reports are available by subscription free of charge direct to your e-mail address. Starting with the NASS Home Page at www.nass.usda.gov, under the right navigation, *Receive reports by Email*, click on **National** or **State**. Follow the instructions on the screen.

PRINTED REPORTS OR DATA PRODUCTS

CALL OUR TOLL-FREE ORDER DESK: 800-999-6779 (U.S. and Canada)
Other areas, please call 703-605-6220 FAX: 703-605-6880
(Visa, MasterCard, check, or money order acceptable for payment.)

ASSISTANCE

For **assistance** with general agricultural statistics or further information about NASS or its products or services, contact the **Agricultural Statistics Hotline** at **800-727-9540**, 7:30 a.m. to 4:00 p.m. ET, or e-mail: nass@nass.usda.gov.

The U.S. Department of Agriculture (USDA) prohibits discrimination in all its programs and activities on the basis of race, color, national origin, age, disability, and where applicable, sex, marital status, familial status, parental status, religion, sexual orientation, genetic information, political beliefs, reprisal, or because all or a part of an individual's income is derived from any public assistance program. (Not all prohibited bases apply to all programs.) Persons with disabilities who require alternative means for communication of program information (Braille, large print, audiotape, etc.) should contact USDA's TARGET Center at (202) 720-2600 (voice and TDD).

To file a complaint of discrimination, write to USDA, Director, Office of Civil Rights, 1400 Independence Avenue, S.W., Washington, D.C. 20250-9410, or call (800) 795-3272 (voice) or (202) 720-6382 (TDD). USDA is an equal opportunity provider and employer.