



# Peanut Prices

ISSN: 1949-1891

Released February 4, 2011, by the National Agricultural Statistics Service (NASS), Agricultural Statistics Board, United States Department of Agriculture (USDA).

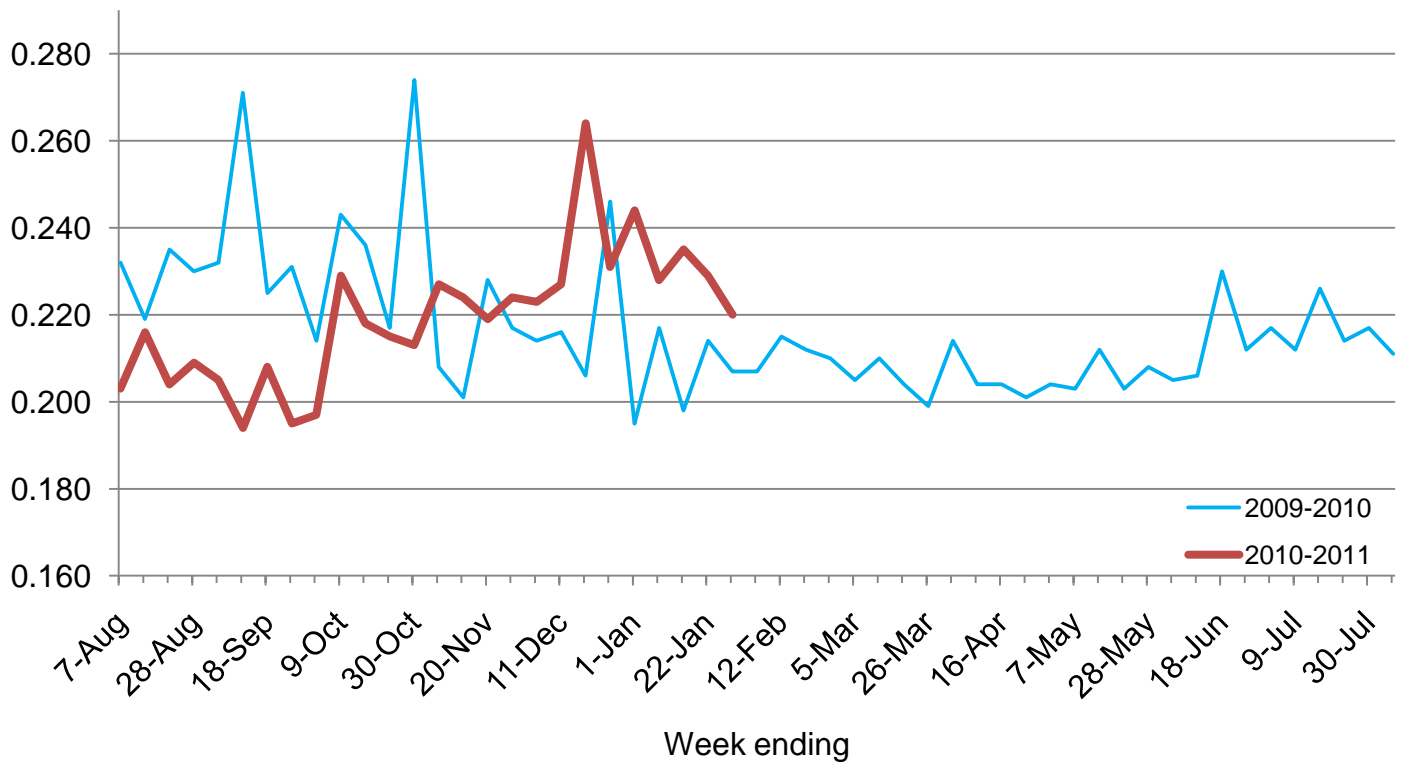
## Peanut Price Highlights

**Peanut** prices received by farmers for all farmer stock peanuts averaged 22.0 cents per pound for the week ending January 29, down 0.9 cent from the previous week. Marketings of all farmer stock peanuts for the week ending January 29 totaled 58.5 million pounds, up 686,000 pounds from the previous week.

**Runner-type** peanut prices averaged 21.6 cents per pound for the week ending January 29, unchanged from the previous week. Marketings of Runner-type peanuts were 54.3 million pounds, up 4.32 million pounds from the previous week.

## All Peanut Prices – United States

Dollars per pound



## Peanut Prices and Marketings by Type – United States: January 1, 2011-January 29, 2011

Item and type	Week ending				
	January 1, 2011	January 8, 2011	January 15, 2011	January 22, 2011	January 29, 2011
	(dollars per pound)	(dollars per pound)	(dollars per pound)	(dollars per pound)	(dollars per pound)
<b>Average price</b>					
Runners .....	0.243	0.214	0.233	0.216	0.216
Spanish .....	(D)	0.188	(D)	0.355	0.269
Valencias .....	(D)	(X)	(D)	(D)	(X)
Virginias .....	0.261	0.254	0.244	(D)	(X)
All .....	0.244	0.228	0.235	0.229	0.220
	(1,000 pounds)	(1,000 pounds)	(1,000 pounds)	(1,000 pounds)	(1,000 pounds)
<b>Marketings <sup>1</sup></b>					
Runners .....	24,867	33,449	41,698	50,009	54,330
Spanish .....	(D)	84	(D)	2,178	4,166
Valencias .....	(D)	-	(D)	(D)	-
Virginias .....	1,986	17,017	2,727	(D)	-
All .....	26,895	50,550	46,708	57,810	58,496

- Represents zero.

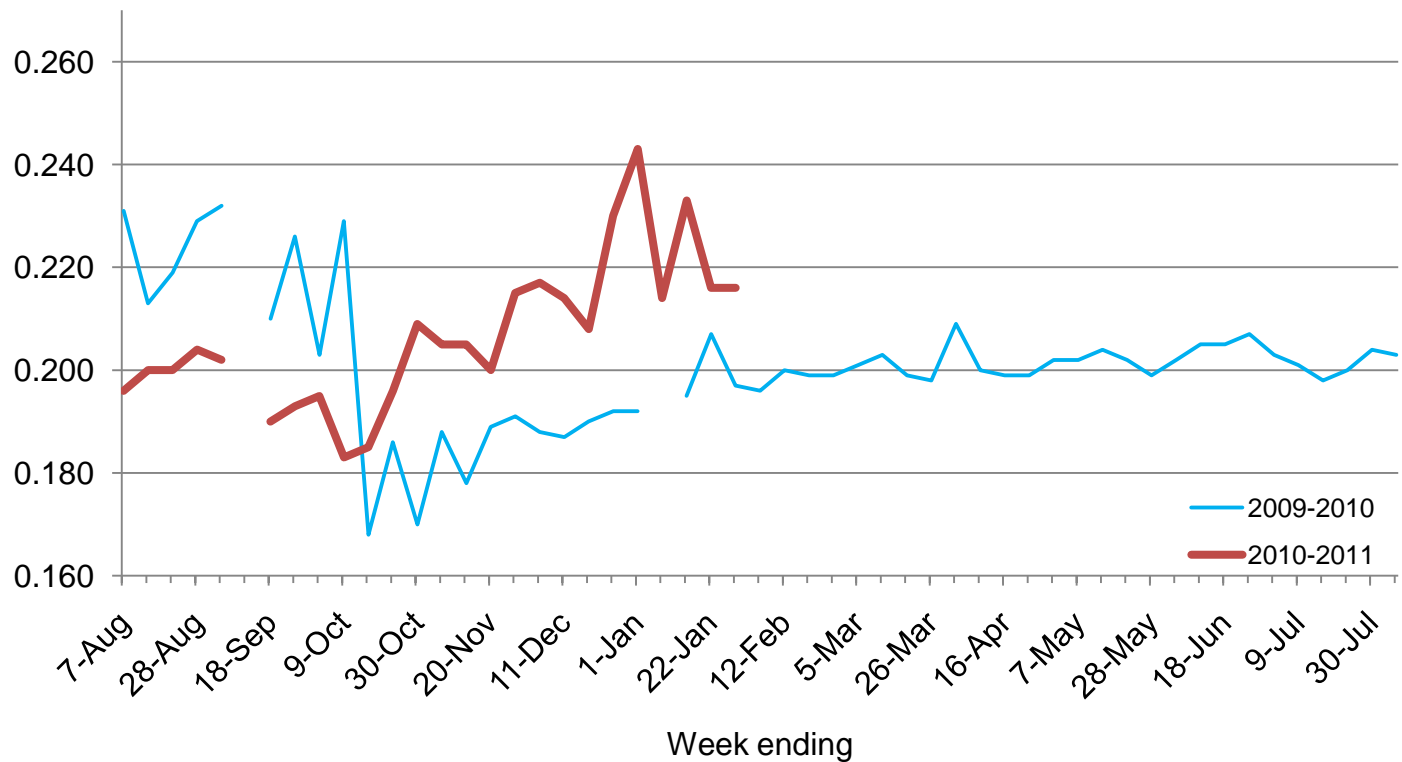
(D) Withheld to avoid disclosing data for individual operations.

(X) Not applicable.

<sup>1</sup> Quantity purchased from farmers.

## Runner-Type Peanut Prices – United States

Dollars per pound



## Statistical Methodology

**Survey Procedures:** Price and marketing information included in this report is provided the beginning of each week by first buyers of farmer stock peanuts. Each week, respondents are asked to report total pounds purchased (marketings) from farmers and total dollars paid, by type (Runners, Spanish, Valencias, and Virginias), for the previous week. The reported data are to include all qualities and grades and exclude peanuts used for seed. Data are collected by telephone, fax, and internet each week for the previous week. The peanut price survey is an enumeration of all known first buyers of farmer stock peanuts from growers. Every effort is made to obtain a report from all buyers.

**Estimating Procedures:** Since a complete report is not received from all buyers each week, the reported quantities purchased and total dollars paid for each type are expanded to account for non-response. These expanded data are then used to calculate the weighted average price for each type. Estimates of price and marketings are prepared by the Agricultural Statistics Board and reviewed for reasonableness with recent historic estimates and between the different peanut types.

**Revision Policy:** Price and marketing estimates for the prior three weeks are subject to revision based on late reports. At the end of the marketing year, all buyers will have an opportunity to update or provide any late data for any week during the marketing year. After this data is incorporated with previously reported data, revised weekly estimates will be published for the entire marketing year.

**Reliability:** The peanut price survey is subject to non-sampling errors such as omission, duplication, imputation for missing data, and mistakes in reporting, recording, and processing the data. These errors cannot be measured directly, but are minimized through rigid quality controls in the data collection process and a careful review of all reported data for consistency and reasonableness.

## Information Contacts

Listed below are the commodity statisticians in the Crops Branch of the National Agricultural Statistics Service to contact for additional information. E-mail inquiries may be sent to [nass@nass.usda.gov](mailto:nass@nass.usda.gov)

Lance Honig, Chief, Crops Branch.....	(202) 720-2127
Jacqueline Moore, Head, Field Crops Section.....	(202) 720-2127
Suzanne Avilla – Peanuts, Rice .....	(202) 720-7688
Bryan Durham – Hay, Oats.....	(202) 690-3234
Steve Maliszewski – Cotton, Cotton Ginnings, Sorghum.....	(202) 720-5944
Anthony Prillaman – Corn, Proso Millet, Flaxseed .....	(202) 720-9526
Nick Schauer – Wheat, Rye .....	(202) 720-8068
Julie Schmidt – Crop Weather, Barley, Sugar Crops.....	(202) 720-7621
Travis Thorson – Soybeans, Sunflower, Other Oilseeds .....	(202) 720-7369

## Access to NASS Reports

For your convenience, you may access NASS reports and products the following ways:

- All reports are available electronically, at no cost, on the NASS web site: <http://www.nass.usda.gov>
- Both national and state specific reports are available via a free e-mail subscription. To set-up this free subscription, visit <http://www.nass.usda.gov> and in the “Receive NASS Updates” box under “Receive reports by Email,” click on “National” or “State” to select the reports you would like to receive.
- Printed reports may be purchased from the National Technical Information Service (NTIS) by calling toll-free (800) 999-6779, or (703) 605-6220 if calling from outside the United States or Canada. Accepted methods of payment are Visa, MasterCard, check, or money order.

For more information on NASS surveys and reports, call the NASS Agricultural Statistics Hotline at (800) 727-9540, 7:30 a.m. to 4:00 p.m. ET, or e-mail: [nass@nass.usda.gov](mailto:nass@nass.usda.gov).

The United States Department of Agriculture (USDA) prohibits discrimination in all its programs and activities on the basis of race, color, national origin, age, disability, and where applicable, sex, marital status, familial status, parental status, religion, sexual orientation, political beliefs, genetic information, reprisal, or because all or a part of an individual's income is derived from any public assistance program. (Not all prohibited bases apply to all programs.) Persons with disabilities who require alternative means for communication of program information (Braille, large print, audiotape, etc.) should contact USDA's TARGET Center at (202) 720-2600 (voice and TDD).

To file a complaint of discrimination, write to USDA, Assistant Secretary for Civil Rights, Office of the Assistant Secretary for Civil Rights, 1400 Independence Avenue, S.W., Stop 9410, Washington, DC 20250-9410, or call toll-free at (866) 632-9992 (English) or (800) 877-8339 (TDD) or (866) 377-8642 (English Federal-relay) or (800) 845-6136 (Spanish Federal-relay). USDA is an equal opportunity provider and employer.



## **Today's Strategies & Tomorrow's Opportunities**

**February 24-25, 2011**

Crystal Gateway Marriott Hotel  
Arlington, Virginia

**[www.usda.gov/oce/forum](http://www.usda.gov/oce/forum)**

Early Bird Registration \$350 until January 21, 2011  
\* \$375 after January 21

***Topical Sessions Will Address:***

- \*Risk Management
- \*Renewable Energy
- \*Rural Communities
- \*Land Tenure Issues
- \*Sustainability
- \*Foreign Trade & Domestic Markets
- \*Conservation & the Environment
- \*Nutrition & USDA Dietary Guidelines
- \*Broadband