

Released June 28, 2013, by the National Agricultural Statistics Service (NASS), Agricultural Statistics Board, United States Department of Agriculture (USDA).

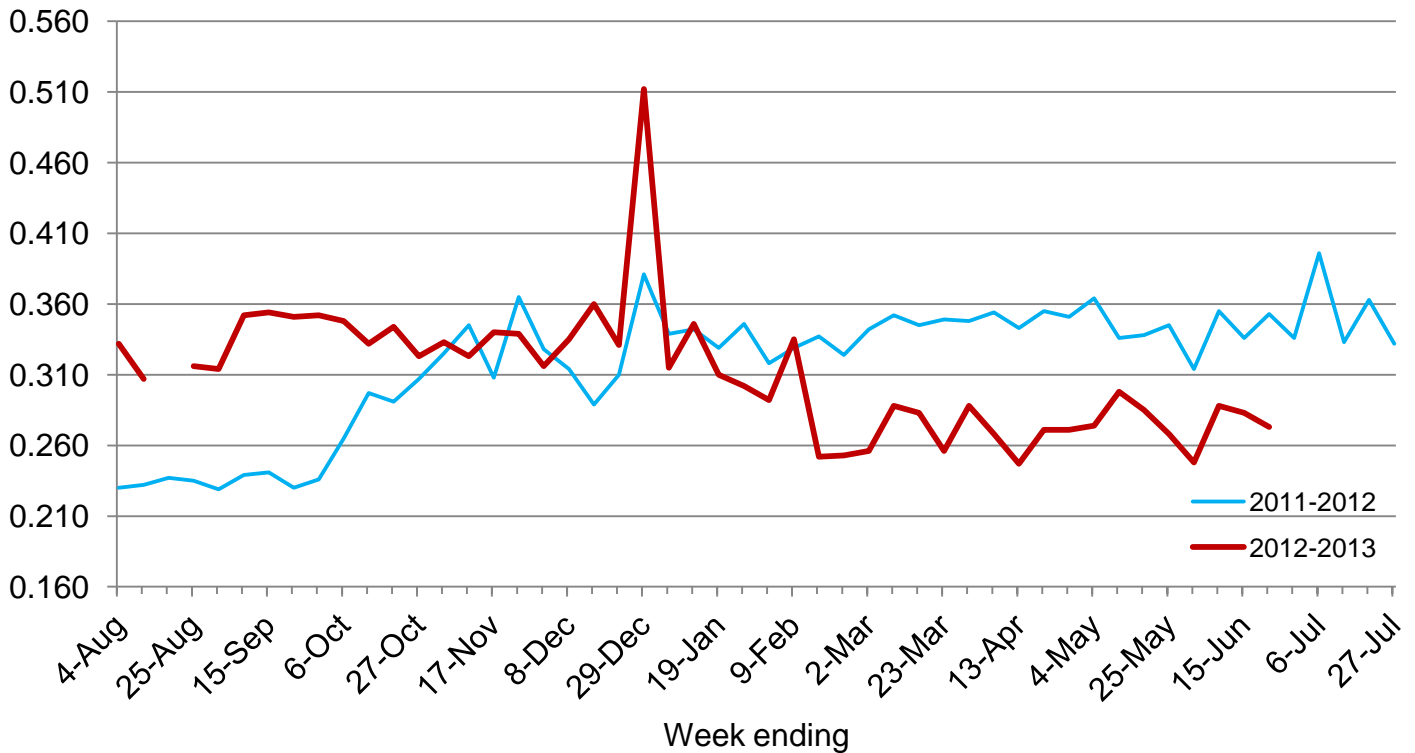
Peanut Price Highlights

Peanut prices received by farmers for all farmer stock peanuts averaged 27.3 cents per pound for the week ending June 22, down 1.0 cent from the previous week. Marketings of all farmer stock peanuts for the week ending June 22 totaled 107 million pounds, up 13.9 million pounds from the previous week.

Runner-type peanut prices averaged 26.6 cents per pound for the week ending June 22. Marketings of runner-type peanuts were 96.8 million pounds.

All Peanut Prices – United States

Dollars per pound



Peanut Prices and Marketings by Type – United States: May 25, 2013-June 22, 2013

Item and type	Week ending				
	May 25, 2013	June 1, 2013	June 8, 2013	June 15, 2013	June 22, 2013
	(dollars per pound)	(dollars per pound)	(dollars per pound)	(dollars per pound)	(dollars per pound)
Average price					
Runner	0.261	0.245	0.284	(D)	0.266
Spanish	(X)	(X)	(X)	(X)	(D)
Valencia	(X)	(X)	(X)	(X)	(X)
Virginia	0.315	0.312	0.325	(D)	(D)
All	0.268	0.248	0.288	0.283	0.273
	(1,000 pounds)	(1,000 pounds)	(1,000 pounds)	(1,000 pounds)	(1,000 pounds)
Marketings ¹					
Runner	87,490	137,981	63,174	(D)	96,750
Spanish	-	-	-	-	(D)
Valencia	-	-	-	-	-
Virginia	13,909	6,282	6,543	(D)	(D)
All	101,399	144,263	69,717	93,157	107,101

- Represents zero.

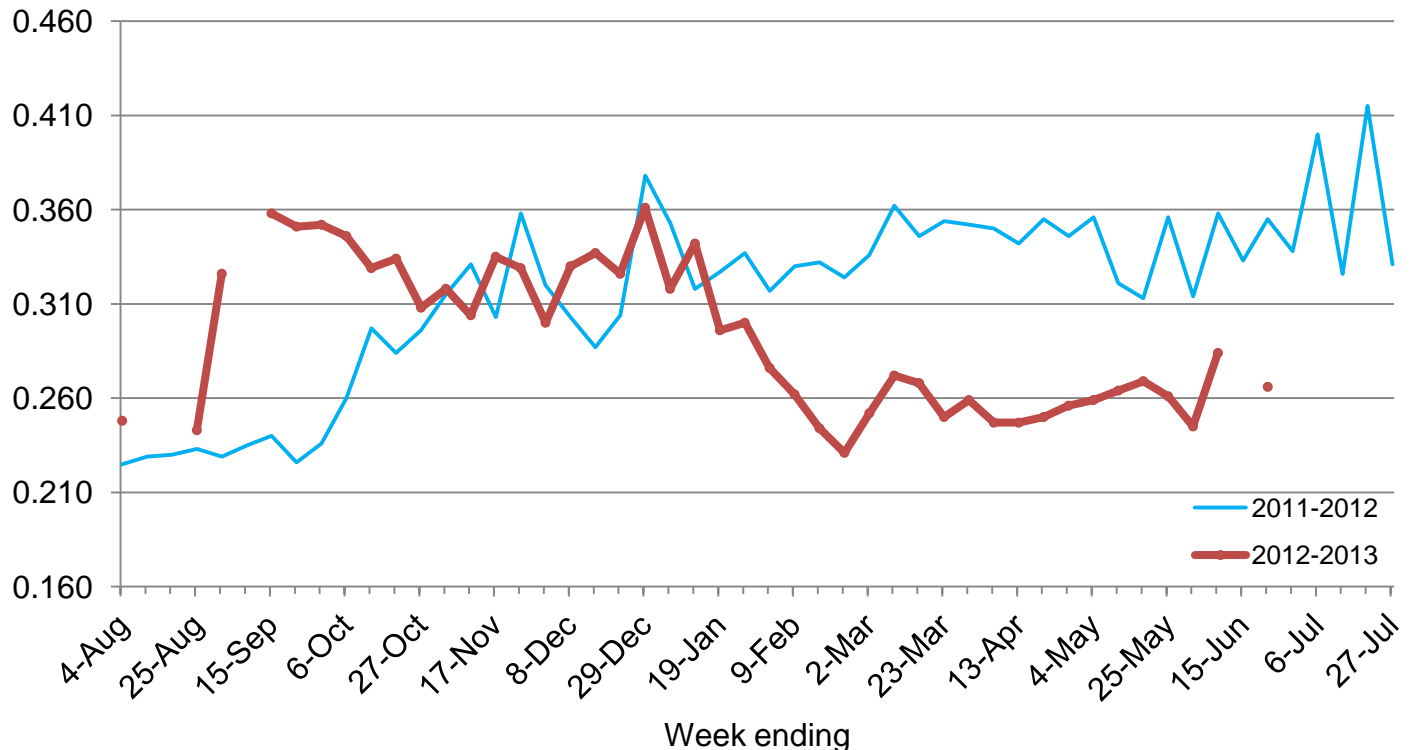
(D) Withheld to avoid disclosing data for individual operations.

(X) Not applicable.

¹ Quantity purchased from farmers.

Runner-Type Peanut Prices – United States

Dollars per pound



Statistical Methodology

Survey procedures: Price and marketing information included in this report is provided the beginning of each week by first buyers of farmer stock peanuts. Each week, respondents are asked to report total pounds purchased (marketings) from farmers and total dollars paid, by type (Runners, Spanish, Valencias, and Virginias), for the previous week. The reported data are to include all qualities and grades and exclude peanuts used for seed. Data are collected by telephone, fax, and internet each week for the previous week. The peanut price survey is an enumeration of all known first buyers of farmer stock peanuts from growers. Every effort is made to obtain a report from all buyers.

Estimating procedures: Since a complete report is not received from all buyers each week, the reported quantities purchased and total dollars paid for each type are expanded to account for non-response. These expanded data are then used to calculate the weighted average price for each type. Estimates of price and marketings are prepared by the Agricultural Statistics Board and reviewed for reasonableness with recent historic estimates and between the different peanut types.

Revision policy: Price and marketing estimates for the prior three weeks are subject to revision based on late reports. At the end of the marketing year, all buyers will have an opportunity to update or provide any late data for any week during the marketing year. After this data is incorporated with previously reported data, revised weekly estimates will be published for the entire marketing year.

Reliability: The peanut price survey is subject to non-sampling errors such as omission, duplication, imputation for missing data, and mistakes in reporting, recording, and processing the data. These errors cannot be measured directly, but are minimized through rigid quality controls in the data collection process and a careful review of all reported data for consistency and reasonableness.

Information Contacts

Listed below are the commodity statisticians in the Crops Branch of the National Agricultural Statistics Service to contact for additional information. E-mail inquiries may be sent to nass@nass.usda.gov

Lance Honig, Chief, Crops Branch.....	(202) 720-2127
Anthony Prillaman, Head, Field Crops Section.....	(202) 720-2127
Brent Chittenden – Oats, Rye, Wheat.....	(202) 720-8068
Angie Considine – Peanuts, Rice.....	(202) 720-7688
Chris Hawthorn – Corn, Flaxseed, Proso Millet.....	(202) 720-9526
Steve Maliszewski – Cotton, Cotton Ginnings, Sorghum.....	(202) 720-5944
Julie Schmidt – Crop Weather, Barley, Hay.....	(202) 720-7621
Travis Thorson – Soybeans, Sunflower, Other Oilseeds.....	(202) 720-7369

Access to NASS Reports

For your convenience, you may access NASS reports and products the following ways:

- All reports are available electronically, at no cost, on the NASS web site: <http://www.nass.usda.gov>
- Both national and state specific reports are available via a free e-mail subscription. To set-up this free subscription, visit <http://www.nass.usda.gov> and in the “Follow NASS” box under “Receive reports by Email,” click on “National” or “State” to select the reports you would like to receive.

For more information on NASS surveys and reports, call the NASS Agricultural Statistics Hotline at (800) 727-9540, 7:30 a.m. to 4:00 p.m. ET, or e-mail: nass@nass.usda.gov.

The United States Department of Agriculture (USDA) prohibits discrimination in all its programs and activities on the basis of race, color, national origin, age, disability, and where applicable, sex, marital status, familial status, parental status, religion, sexual orientation, political beliefs, genetic information, reprisal, or because all or a part of an individual's income is derived from any public assistance program. (Not all prohibited bases apply to all programs.) Persons with disabilities who require alternative means for communication of program information (Braille, large print, audiotape, etc.) should contact USDA's TARGET Center at (202) 720-2600 (voice and TDD).

To file a complaint of discrimination, write to USDA, Assistant Secretary for Civil Rights, Office of the Assistant Secretary for Civil Rights, 1400 Independence Avenue, S.W., Stop 9410, Washington, DC 20250-9410, or call toll-free at (866) 632-9992 (English) or (800) 877-8339 (TDD) or (866) 377-8642 (English Federal-relay) or (800) 845-6136 (Spanish Federal-relay). USDA is an equal opportunity provider and employer.