

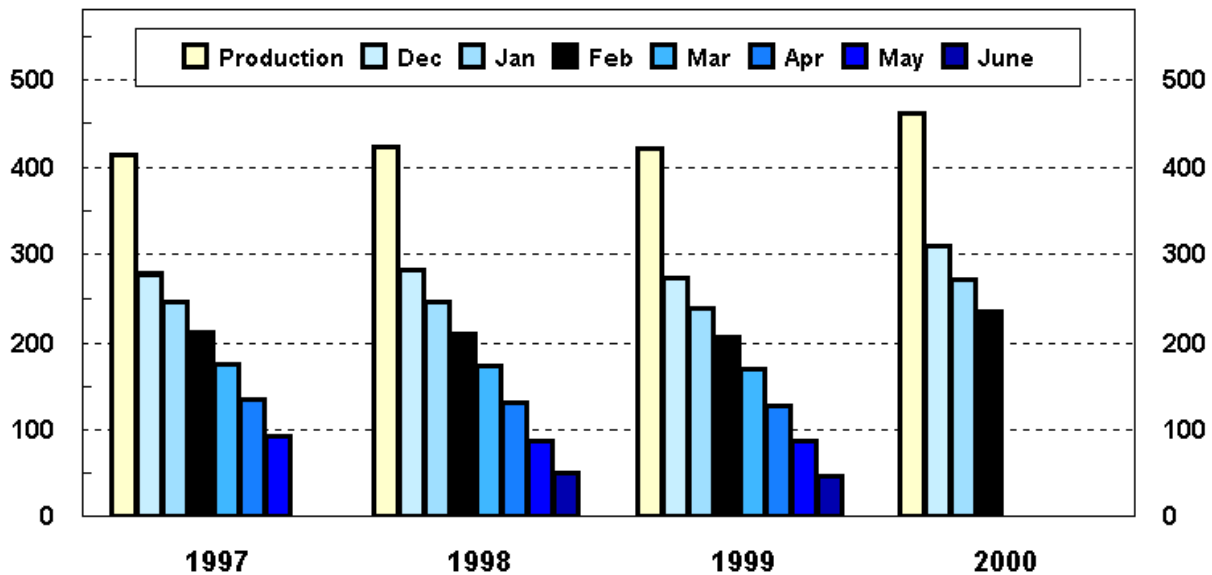
Released February 14, 2001, by the National Agricultural Statistics Service (NASS), Agricultural Statistics Board, U.S. Department of Agriculture. For information on "Potato Stocks" call Arvin Budge at (202) 720-4285, office hours 7:30 a.m. to 4:00 p.m. ET.

February Potato Stocks Record High, Up 13 Percent

The 15 major potato States held a record high 235 million cwt of potatoes on February 1, 2001, up 13 percent from last year and 4 percent above the previous record set in February 1997. Potatoes in storage accounted for 51 percent of the 2000 fall storage States' production, up 2 percentage points from a year ago. This year's storage held more reds but fewer round whites than a year earlier. Disappearance, at a record high 227 million cwt, is up 6 percent from last year and 4 percent above the previous record set during the 1996 season. Also, potatoes used for processing to February 1 was a record high 113 million cwt, up 4 percent from last year and less than 1 percent above the previous record set during the 1996 season for comparable States.

Fall Potatoes: Production and Stocks 15 Storage States

Mil Cwt



Production by crop year. Stocks by months following harvest.

Fall Potatoes: Production and Stocks, 15 Major States, 1991-2000

Crop Year	Production	Dec 1	Jan 1	Feb 1	Mar 1	Apr 1	May 1	Jun 1 ¹
	<i>1,000 Cwt</i>	<i>1,000 Cwt</i>	<i>1,000 Cwt</i>	<i>1,000 Cwt</i>	<i>1,000 Cwt</i>	<i>1,000 Cwt</i>	<i>1,000 Cwt</i>	<i>1,000 Cwt</i>
1991	363,541	242,070	211,005	178,515	145,820	108,865	69,110	
1992	368,516	246,820	215,990	184,560	152,795	115,785	75,040	
1993	376,954	249,410	217,300	185,490	153,435	115,170	72,860	
1994	410,839	273,290	238,560	202,470	169,570	129,825	87,600	
1995	394,785	256,710	223,550	189,360	156,020	115,855	75,870	
1996	443,704	295,100	261,320	226,080	189,210	147,635	103,210	
1997	413,513	278,830	246,550	212,562	175,870	134,190	92,840	
1998	423,170	280,910	246,230	209,640	173,650	131,220	87,895	50,270
1999	420,567	275,100	239,910	207,150	169,620	128,410	86,915	47,220
2000	461,827	309,520	272,960	235,050				

¹ Data not available prior to 1998.

Potatoes: Quantity Used for Processing, 9 States, 1997-2000 ¹

State and Crop Year	Dec 1	Jan 1	Feb 1	Mar 1	Apr 1	May 1	Jun 1 ²	Season
	<i>1,000 Cwt</i>	<i>1,000 Cwt</i>	<i>1,000 Cwt</i>	<i>1,000 Cwt</i>	<i>1,000 Cwt</i>	<i>1,000 Cwt</i>	<i>1,000 Cwt</i>	<i>1,000 Cwt</i>
ID & OR-Mal								
1997	26,880	33,950	41,050	49,470	57,620	65,750		91,450
1998	27,510	34,700	42,670	51,210	60,040	68,550	76,410	92,860
1999	27,970	34,490	40,790	49,220	57,820	66,080	74,110	88,210
2000	29,290	35,720	43,470					
ME ³								
1997	1,250	1,720	2,265	2,735	3,355	3,900		5,870
1998	1,430	1,935	2,530	2,985	3,595	4,180	4,705	5,945
1999	1,270	1,700	2,385	3,070	3,765	4,560	5,150	6,670
2000	1,845	2,475	3,105					
WA & OR-Oth								
1997	28,580	33,990	38,690	46,400	53,720	59,780		76,930
1998	33,630	38,890	45,650	53,290	60,930	67,180	74,190	83,730
1999	33,320	39,620	45,500	53,350	61,080	67,230	74,840	83,210
2000	34,770	40,970	47,720					
Oth Sts ⁴								
1997	11,645	13,960	17,115	19,905	23,515	26,365		37,842
1998	11,570	14,465	18,030	20,850	24,850	28,190	31,365	39,865
1999	12,455	15,035	17,950	20,855	24,305	27,220	30,410	36,435
2000 ⁵	12,650	15,860	18,255					
Total								
1997	68,355	83,620	99,120	118,510	138,210	155,795		212,092
1998	74,140	89,990	108,880	128,335	149,415	168,100	186,670	222,400
1999	75,015	90,845	106,625	126,495	146,970	165,090	184,510	214,525
2000 ⁵	78,555	95,025	112,550					

¹ Total quantity received and used for processing regardless of the State in which the potatoes were produced. Amount excludes quantities used for potato chips in ME, MI, and WI.

² Data not available prior to 1998.

³ Includes Maine grown potatoes only.

⁴ MN, ND, NV, SD, and WI in 2000. MI, MN, ND, and WI in 1997-1999.

⁵ January 1 data revised.

Fall Potatoes: Production and Stocks on February 1, 2000-01

State	Crop of 1999			Crop of 2000		
	Prod	Stocks Feb 1, 2000	% of Prod	Prod	Stocks Feb 1, 2001	% of Prod
	<i>1,000 Cwt</i>	<i>1,000 Cwt</i>	<i>Percent</i>	<i>1,000 Cwt</i>	<i>1,000 Cwt</i>	<i>Percent</i>
CA	4,005	2,200	55	3,741	1,700	45
CO	25,762	15,100	59	27,972	15,100	54
ID	133,330	76,500	57	152,320	86,500	57
ME	17,813	11,300	63	17,920	10,900	61
MI	14,963	5,800	39	14,963	5,200	35
MN	18,020	7,500	42	21,240	11,600	55
MT	3,325	3,000	90	3,503	3,150	90
NE	8,904	3,250	37	10,127	4,200	41
NY	6,758	1,800	27	5,964	1,300	22
ND	26,400	11,000	42	26,950	13,300	49
OH	987	100	10	1,134	150	13
OR	28,020	18,600	66	30,683	20,500	67
PA	3,080	1,000	32	3,510	950	27
WA	95,200	35,000	37	108,000	47,000	44
WI	34,000	15,000	44	33,800	13,500	40
15 States	420,567	207,150	49	461,827	235,050	51

**Fall Potatoes: Stocks by Type as Percent of Total Stocks,
11 Selected States, February 1, 2000-2001**

State	Potato Types							
	Reds		Round Whites		Long Whites		Russets	
	2000	2001	2000	2001	2000	2001	2000	2001
	<i>Percent</i>	<i>Percent</i>	<i>Percent</i>	<i>Percent</i>	<i>Percent</i>	<i>Percent</i>	<i>Percent</i>	<i>Percent</i>
CO	4	5	2	2			94	93
ID					5	6	95	94
ME	3	4	46	45	8	2	43	49
MI	1	1	89	86			10	13
MN	4	9	5	4			91	87
NY	5	5	90	90			5	5
ND	10	12	22	15	6	3	62	70
OR			1		1	1	98	99
PA	3	3	97	97				
WA	1	1			3	3	96	96
WI	1	4	24	36			75	60
11 St Avg	1	2	10	9	3	3	86	86

**Fall Potatoes: Production, February 1 Stocks, and Farm Disposition,
15 Storage States and 23 Fall Season States, 1997-2000 Crop Years**

State	Crop Year	Production	Stocks Feb 1	Total Used For Fall Seed	Farm Disposition		
					Where Grown		Sold
					Seed, Feed, Home Use	Shrinkage and Loss	
		<i>1,000 Cwt</i>	<i>1,000 Cwt</i>	<i>1,000 Cwt</i>	<i>1,000 Cwt</i>	<i>1,000 Cwt</i>	<i>1,000 Cwt</i>
CA	1997	4,200	2,100	206	20	340	3,840
	1998	3,708	2,000	157	29	720	2,959
	1999	4,005	2,200	179	17	383	3,605
	2000	3,741	1,700				
CO	1997	24,993	14,700	1,895	1,340	2,773	20,880
	1998	25,360	14,200	1,930	1,615	2,615	21,130
	1999	25,762	15,100	1,971	1,705	2,967	21,090
	2000	27,972	15,100				
ID	1997	140,314	81,000	8,700	1,130	9,258	129,926
	1998	138,000	77,500	8,300	1,280	9,756	126,964
	1999	133,330	76,500	8,700	1,150	9,300	122,880
	2000	152,320	86,500				
ME	1997	19,080	12,100	1,430	275	1,760	17,045
	1998	18,060	10,500	1,430	360	1,740	15,960
	1999	17,813	11,300	1,408	330	1,850	15,633
	2000	17,920	10,900				
MI	1997	14,250	5,500	864	200	1,300	12,750
	1998	14,648	5,400	888	200	1,348	13,100
	1999	14,963	5,800	1,005	213	1,300	13,450
	2000	14,963	5,200				
MN	1997	20,440	10,500	1,640	450	1,717	18,273
	1998	21,170	10,500	1,400	254	1,440	19,476
	1999	18,020	7,500	1,254	170	1,980	15,870
	2000	21,240	11,600				
MT	1997	3,328	2,980	244	152	208	2,968
	1998	3,180	2,850	253	145	265	2,770
	1999	3,325	3,000	288	151	213	2,961
	2000	3,503	3,150				
NE	1997	7,761	3,300	462	203	380	7,178
	1998	8,175	2,900	469	166	881	7,128
	1999	8,904	3,250	598	209	742	7,953
	2000	10,127	4,200				
NY	1997	7,150	1,500	607	139	315	6,696
	1998	7,290	1,500	572	110	330	6,850
	1999	6,758	1,800	484	95	323	6,340
	2000	5,964	1,300				

--continued

**Fall Potatoes: Production, February 1 Stocks, and Farm Disposition,
15 Storage States and 23 Fall Season States, 1997-2000 Crop Years**

State	Crop Year	Production	Stocks Feb 1	Total Used For Fall Seed	Farm Disposition		
					Where Grown		Sold
					Seed, Feed, Home Use	Shrinkage and Loss	
		<i>1,000 Cwt</i>	<i>1,000 Cwt</i>	<i>1,000 Cwt</i>	<i>1,000 Cwt</i>	<i>1,000 Cwt</i>	<i>1,000 Cwt</i>
ND	1997	22,000	11,900	2,142	355	2,266	19,379
	1998	28,670	15,000	2,178	395	2,840	25,435
	1999	26,400	11,000	2,232	340	4,600	21,460
	2000	26,950	13,300				
OH	1997	1,170	82	105	8	37	1,125
	1998	1,200	90	100	8	37	1,155
	1999	987	100	84	6	60	921
	2000	1,134	150				
OR	1997	27,319	16,000	1,405	195	1,555	25,569
	1998	26,229	15,800	1,334	195	2,206	23,828
	1999	28,020	18,600	1,368	239	1,607	26,174
	2000	30,683	20,500				
PA	1997	3,173	1,200	276	78	176	2,919
	1998	3,360	900	261	50	252	3,058
	1999	3,080	1,000	270	31	172	2,877
	2000	3,510	950				
WA	1997	88,160	36,500	3,840	300	6,400	81,460
	1998	93,225	36,500	4,080	300	6,500	86,425
	1999	95,200	35,000	4,200	300	6,500	88,400
	2000	108,000	47,000				
WI	1997	30,175	13,200	1,764	275	1,448	28,452
	1998	30,895	14,000	1,720	265	2,360	28,270
	1999	34,000	15,000	1,720	310	1,420	32,270
	2000	33,800	13,500				
15 Sts	1997	413,513	212,562	25,580	5,120	29,933	378,460
	1998	423,170	209,640	25,072	5,372	33,290	384,508
	1999	420,567	207,150	25,761	5,266	33,417	381,884
	2000	461,827	235,050				
Fall Sts	1997	423,190		26,224	5,260	30,841	387,089
	1998	432,737		25,657	5,584	34,231	392,922
	1999	429,847		26,355	5,377	34,260	390,210
	2000	470,504					

**Fall Potatoes: Farm Marketings, Selected States,
1997-1999 Marketing Years**

State	Crop Year	Jul	Aug	Sep	Oct	Nov	Dec	Jan	Feb	Mar	Apr	May	Jun	Jul
		<i>Percent</i>	<i>Percent</i>	<i>Percent</i>	<i>Percent</i>	<i>Percent</i>	<i>Percent</i>	<i>Percent</i>	<i>Percent</i>	<i>Percent</i>	<i>Percent</i>	<i>Percent</i>	<i>Percent</i>	<i>Percent</i>
CA	1997													
	1998				13	12	13	11	10	12	10	8	7	4
	1999				5	12	14	10	12	9	10	10	11	7
CO	1997		1	4	8	9	11	10	8	11	11	10	10	7
	1998			5	8	9	12	10	10	12	11	10	9	4
	1999			4	7	10	10	10	10	12	11	10	10	6
ID	1997		6	15	12	8	8	8	6	7	7	9	7	7
	1998		6	11	20	6	6	7	6	8	9	9	6	6
	1999		3	15	18	6	6	5	7	9	10	9	6	6
ME	1997		1	6	7	8	8	10	9	15	17	10	9	
	1998		1	7	9	9	9	10	11	14	12	9	9	
	1999		3	6	7	7	9	10	10	12	16	11	9	
MI	1997	3	9	10	8	11	11	11	12	11	8	6		
	1998	3	8	9	9	9	12	14	9	12	10	5		
	1999	3	7	8	9	15	12	9	9	9	11	6	2	
MN	1997		5	22	25	11	7	5	6	7	7	5		
	1998		11	16	14	10	5	7	6	8	9	6	8	
	1999		8	12	13	11	8	8	7	9	8	6	5	5
NY	1997		8	15	15	16	15	13	9	5	3	1		
	1998		7	16	16	16	15	11	8	6	4	1		
	1999		4	21	18	11	9	10	8	9	10			
ND	1997		1	12	16	13	8	12	9	9	8	6	5	1
	1998		3	13	14	10	10	8	7	7	9	10	6	3
	1999		2	13	20	7	10	12	7	7	8	7	6	1
OR	1997	1	9	14	30	8	6	5	6	6	5	6	3	1
	1998	2	12	15	27	8	5	4	5	6	6	4	4	2
	1999	2	13	10	21	7	6	7	8	7	7	7	3	2
PA	1997	1	13	13	12	12	12	10	8	7	8	3	1	
	1998		14	12	11	12	15	11	9	7	6	2	1	
	1999		14	13	12	12	13	11	9	7	6	2	1	
WA	1997		12	14	31	7	4	4	4	6	6	6	5	1
	1998		16	13	25	7	3	5	6	7	5	6	6	1
	1999		17	14	24	6	6	5	5	6	5	6	5	1
WI	1997	1	7	17	14	10	9	8	11	10	7	4	2	
	1998	1	6	18	13	10	10	10	9	9	8	4	2	
	1999	2	7	16	12	11	9	8	10	9	9	5	2	

Potato Stocks Record High, Up 13 Percent

February 1, 2001 **potato stocks** totaled a record high 235 million cwt, up 13 percent from last year and 4 percent above the previous record set in February 1997. Potatoes in storage accounted for 51 percent of the fall storage States' production, up 2 percentage points from a year ago. Stocks by type were 2 percent reds, 9 percent round whites, 3 percent long white, and 86 percent russets, with more reds but fewer round whites than a year ago.

Disappearance from the start of harvest to February 1 was a record high 227 million cwt. This disappearance was up 6 percent from last year and 4 percent above the previous record set during the 1996 season. January disappearance of 37.9 million cwt was also record high for the month. Shrink and loss to this point in the season was 27.9 million cwt, up 21 percent from last year and 23 percent above two years ago. This disappearance and loss includes potatoes diverted and destroyed by growers under a cooperative program to reduce surpluses.

Processing of 2000 crop potatoes totaled a record high 113 million cwt to February 1, up 4 percent from the 1999 crop and less than 1 percent above the previous record set during the 1996 season for comparable States. In January, processors used 17.5 million cwt of potatoes, up 10 percent from a year ago for comparable States. Revisions in processing data places December usage at 16.5 million cwt instead of the 18.5 million previously reported.

Eastern States stored 13.2 million cwt of potatoes on February 1, 2001, down 7 percent from a year ago but 2 percent above two years ago. Maine's holdings were down 4 percent and New York's stocks were off 28 percent from last year. Pennsylvania's storage was down 5 percent from a year ago.

Central States accounted for 48.0 million cwt of potato stocks this February 1, 12 percent above 2000 and slightly above 1999. Minnesota's stocks were up 55 percent and Nebraska's were up 29 percent. Stocks in North Dakota were up 21 percent and Ohio was up 50 percent from last year. Wisconsin's and Michigan's potato stocks were each down 10 percent from a year ago.

Western States held 174 million cwt of potatoes in storage on February 1, 2001, up 16 percent from last year and 17 percent above 1999. Washington's potato stocks were up 34 percent from a year ago, while Idaho's stocks were up 13 percent, and Oregon's were up 10 percent. Colorado was equal to last year and Montana was up 5 percent. California's potato stocks were down 23 percent from a year ago.

Potatoes: Shrinkage and Loss, 15 Fall Storage States, 1997-2000

Crop Year	To Dec 1	To Jan 1	To Feb 1	To Mar 1	To Apr 1	To May 1	Total Jun 1 ¹	Season
	<i>Million Cwt</i>	<i>Million Cwt</i>	<i>Million Cwt</i>	<i>Million Cwt</i>	<i>Million Cwt</i>	<i>Million Cwt</i>	<i>Million Cwt</i>	<i>Million Cwt</i>
1997	15.3	17.3	19.3	21.3	23.5	25.6		29.9
1998	18.4	20.6	22.7	24.7	26.9	29.0	30.9	33.3
1999	18.2	21.0	23.0	25.0	27.1	29.2	31.1	33.4
2000	19.5	22.5	27.9					

¹ Data not available prior to 1998.

Reliability of February 1 Stocks Estimates

The "Root Mean Square Error" for the February 1 stocks estimate is 3.2 percent. This means that chances are 2 out of 3 that the current estimate of 235 million cwt will not be above or below the final estimate by more than 3.2 percent or approximately 7.5 million cwt. Chances are 9 out of 10 (90 percent confidence level) that the difference will not exceed 5.6 percent or approximately 13.2 million cwt.

The 10-year (1991-2000) record of differences between the February 1 stocks estimates and the final estimates averaged 5.7 million cwt, ranging from 1.46 million cwt above the final to 14.2 million cwt below the final. During the 10-year period, the February 1 estimate has been below the final estimate 8 years and above 2 years.

**Fall Potato Stocks: Preliminary and Final February 1 Stocks,
United States, 1990-2000**

Crop Year	Preliminary Stocks	% of Final	Final Stocks
	<i>1,000 Cwt</i>	<i>Percent</i>	<i>1,000 Cwt</i>
1990	154,310	94.8	162,850
1991	178,965	100.3	178,515
1992	170,385	92.3	184,560
1993	178,070	96.0	185,490
1994	196,005	96.8	202,470
1995	184,755	97.6	189,360
1996	220,465	97.5	226,080
1997	205,850	96.8	212,562
1998	211,100	100.7	209,640
1999	205,780	99.3	207,150
2000	235,050		

Note: Stocks are defined as the quantity (whether sold or not) remaining in storage for all purposes and uses, including seed potatoes not yet moved, and shrinkage, waste, and other losses that occur after the date of each report. Sales of fall potatoes for all purposes for the past 5 years averaged 90.9 percent of the total fall production. Shrinkage and loss and home use accounted for the remaining 9.1 percent. Most seed for use the following crop year is on hand and remains part of stocks until moved or planted.

**Potatoes: Production, Sold, Not Sold, and Kept for Seed,
United States, 1995-2000**

Crop Year	Fall Potatoes					Amount Used for Seed All Seasons Following year
	Production	Sold	Sold as % of Prod	Not Sold	Not Sold as % of Prod	
	<i>1,000 Cwt</i>	<i>1,000 Cwt</i>	<i>Percent</i>	<i>1,000 Cwt</i>	<i>Percent</i>	<i>1,000 Cwt</i>
1995	404,852	370,679	91.6	34,173	8.4	30,561
1996	454,388	408,247	89.8	46,141	10.2	29,138
1997	423,190	387,089	91.5	36,101	8.5	29,975
1998	432,737	392,922	90.8	39,815	9.2	29,217
1999	429,847	390,210	90.8	39,637	9.2	29,726
2000	470,504					

The next "Potato Stocks" report will be released at 3 p.m. ET on March 14, 2001.

The United States Department of Agriculture (USDA) prohibits discrimination in all its programs on the basis of race, color, national origin, gender, religion, age, disability, political beliefs, sexual orientation, and marital or family status. (Not all prohibited bases apply to all programs.) Persons with disabilities who require alternative means for communication of program information (braille, large print, audiotape, etc.) should contact the USDA's TARGET Center at 202-720-2600 (voice and TDD).

To file a complaint of discrimination, write USDA, Director, Office of Civil Rights, Room 326-W, Whitten Building, 14th and Independence Avenue, SW, Washington, D.C., 20250-9410, or call 202-720-5964 (voice or TDD). USDA is an equal opportunity provider and employer.

ACCESS TO REPORTS!!

For your convenience, there are several ways to obtain NASS reports, data products, and services:

INTERNET ACCESS

All NASS reports are available free of charge on the worldwide Internet. For access, connect to the Internet and go to the NASS Home Page at: <http://www.usda.gov/nass/>. Select "Today's Reports" or Publications and then Reports by Calendar or Publications and then Search, by Title or Subject.

E-MAIL SUBSCRIPTION

There are two options for subscribing via e-mail. All NASS reports are available by subscription free of charge direct to your e-mail address. 1) Starting with the NASS Home Page at <http://www.usda.gov/nass/>, click on **Publications**, then click on the **Subscribe by E-mail** button which takes you to the page describing e-mail delivery of reports. Finally, click on **Go to the Subscription Page** and follow the instructions. 2) If you do NOT have Internet access, send an e-mail message to: usda-reports@usda.mannlib.cornell.edu. In the body of the message type the word: **list**.

AUTOFAX ACCESS

NASSFax service is available for some reports from your fax machine. Please call 202-720-2000, using the handset attached to your fax. Respond to the voice prompts. Document 0411 is a list of available reports.

PRINTED REPORTS OR DATA PRODUCTS

CALL OUR TOLL-FREE ORDER DESK: 800-999-6779 (U.S. and Canada)
Other areas, please call 703-834-0125 FAX: 703-834-0110
(Visa, MasterCard, check, or money order acceptable for payment.)

ASSISTANCE

For **assistance** with general agricultural statistics or further information about NASS or its products or services, contact the **Agricultural Statistics Hotline** at **800-727-9540**, 7:30 a.m. to 4:00 p.m. ET, or e-mail: nass@nass.usda.gov.

Agricultural Outlook Forum



February 22-23, 2001
Arlington, Virginia

USDA's 77th outlook conference will offer timely forecasts of farm prospects and insight on developments affecting the farm economy. The program will feature top business leaders and officials. Networking opportunities abound at this popular event, attended by over 1,300 people last February.

Policy Debate. Future farm policy will be a hot topic during 2001. The Forum will open with high-level panels on the next farm bill and world trade talks. Focus sessions during the two-day program will preview key policy issues on next year's agenda.

Farm Prospects. Attendees will hear leading analysts discuss the 2001 commodity outlook and industry trends, and receive USDA's latest 10-year projections.

Act Now. Get registration details and program updates at the Forum website. Can't attend in person? Sign up now to get speeches by e-mail after the Forum, or download them from the website.

agforum@oce.usda.gov
(202) 720-3050

<http://www.usda.gov/oc/waob/oc2001/press.htm>