

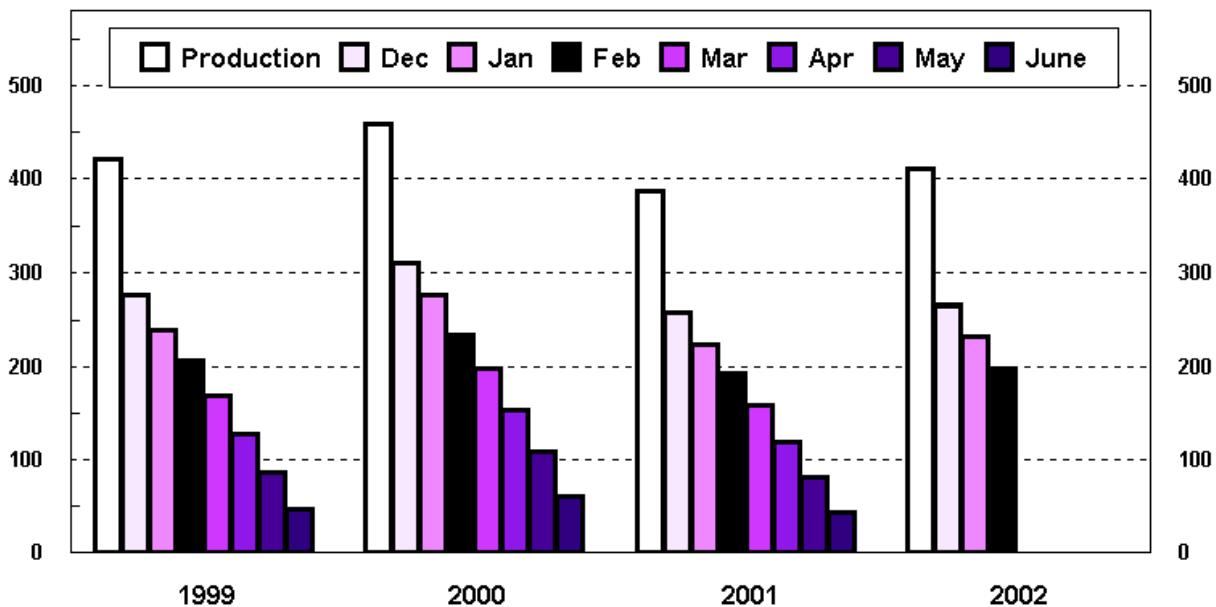
Released February 14, 2003, by the National Agricultural Statistics Service (NASS), Agricultural Statistics Board, U.S. Department of Agriculture. For information on "Potato Stocks" call Arvin Budge at (202) 720-4285, office hours 7:30 a.m. to 4:00 p.m. ET.

## Potato Stocks Up 3 Percent

The 15 major potato States held 197 million cwt of potatoes in storage February 1, 2003, up 3 percent from last year but 16 percent below 2001. Storage accounts for 48 percent of the 2002 fall storage States' production, down 2 percentage points from last year. Stocks by type show more reds and round whites but fewer long whites and russets than a year ago. Disappearance of 213 million cwt, is up 9 percent from last year but 5 percent below 2000 crop movement. Shrink and loss, of 20.4 million cwt so far this season, is up 3 percent from last year but 22 percent below the same date in 2000. Processors in the 9 major States used 109 million cwt of potatoes this season, up 13 percent from a year ago but 4 percent below two years ago. Dehydrating usage accounts for 23.7 million cwt of the total processing. This report contains corrected variety information on percent of potatoes planted. This table was previously published in the November 2002 Crop Production report.

### Fall Potatoes: Production and Stocks 15 Storage States

Mil Cwt



Production by crop year. Stocks by months following harvest.

**Fall Potatoes: Production and Stocks, 15 Major States, 1993-2002**

| Crop Year | Production       | Dec 1            | Jan 1            | Feb 1            | Mar 1            | Apr 1            | May 1            | Jun 1 <sup>1</sup> |
|-----------|------------------|------------------|------------------|------------------|------------------|------------------|------------------|--------------------|
|           | <i>1,000 Cwt</i> | <i>1,000 Cwt</i> | <i>1,000 Cwt</i> | <i>1,000 Cwt</i> | <i>1,000 Cwt</i> | <i>1,000 Cwt</i> | <i>1,000 Cwt</i> | <i>1,000 Cwt</i>   |
| 1993      | 376,954          | 249,410          | 217,300          | 185,490          | 153,435          | 115,170          | 72,860           |                    |
| 1994      | 410,839          | 273,290          | 238,560          | 202,470          | 169,570          | 129,825          | 87,600           |                    |
| 1995      | 394,785          | 256,710          | 223,550          | 189,360          | 156,020          | 115,855          | 75,870           |                    |
| 1996      | 443,704          | 295,100          | 261,320          | 226,080          | 189,210          | 147,635          | 103,210          |                    |
| 1997      | 413,513          | 278,830          | 246,550          | 212,562          | 175,870          | 134,190          | 92,840           |                    |
| 1998      | 423,170          | 280,910          | 246,230          | 209,640          | 173,650          | 131,220          | 87,895           | 50,270             |
| 1999      | 420,567          | 275,100          | 239,910          | 207,150          | 169,620          | 128,410          | 86,915           | 47,220             |
| 2000      | 458,827          | 310,300          | 275,270          | 234,260          | 197,670          | 153,520          | 109,160          | 61,240             |
| 2001      | 387,179          | 258,750          | 224,680          | 192,190          | 158,590          | 119,950          | 81,200           | 42,990             |
| 2002      | 410,912          | 265,890          | 232,140          | 197,470          |                  |                  |                  |                    |

<sup>1</sup> Data not available prior to 1998.

**Potatoes: Quantity Used for Processing, 9 States, 2000-2002 <sup>1</sup>**

| State and Crop Year            | Dec 1            | Jan 1            | Feb 1            | Mar 1            | Apr 1            | May 1            | Jun 1            | Season           |
|--------------------------------|------------------|------------------|------------------|------------------|------------------|------------------|------------------|------------------|
|                                | <i>1,000 Cwt</i> | <i>1,000 Cwt</i> | <i>1,000 Cwt</i> | <i>1,000 Cwt</i> | <i>1,000 Cwt</i> | <i>1,000 Cwt</i> | <i>1,000 Cwt</i> | <i>1,000 Cwt</i> |
| <b>ID &amp; OR-Mal</b>         |                  |                  |                  |                  |                  |                  |                  |                  |
| 2000                           | 29,290           | 35,720           | 43,470           | 50,580           | 58,910           | 66,760           | 75,270           | 93,460           |
| 2001                           | 20,940           | 27,330           | 33,620           | 40,860           | 47,710           | 54,150           | 61,200           | 73,390           |
| 2002                           | 28,380           | 34,860           | 41,200           |                  |                  |                  |                  |                  |
| <b>ME <sup>2</sup></b>         |                  |                  |                  |                  |                  |                  |                  |                  |
| 2000                           | 1,845            | 2,475            | 3,105            | 3,695            | 4,225            | 4,760            | 5,340            | 7,015            |
| 2001                           | 1,975            | 2,440            | 3,110            | 3,700            | 4,285            | 4,775            | 5,515            | 7,195            |
| 2002                           | 2,275            | 2,720            | 3,300            |                  |                  |                  |                  |                  |
| <b>WA &amp; OR-Oth</b>         |                  |                  |                  |                  |                  |                  |                  |                  |
| 2000                           | 34,770           | 40,970           | 47,720           | 55,250           | 62,860           | 69,850           | 78,010           | 91,130           |
| 2001                           | 29,320           | 35,310           | 40,540           | 47,910           | 54,970           | 61,360           | 69,400           | 77,180           |
| 2002                           | 33,680           | 39,490           | 45,640           |                  |                  |                  |                  |                  |
| <b>Oth Sts <sup>3</sup></b>    |                  |                  |                  |                  |                  |                  |                  |                  |
| 2000                           | 12,665           | 16,215           | 18,975           | 22,095           | 25,410           | 28,695           | 31,765           | 39,020           |
| 2001                           | 13,270           | 15,325           | 19,060           | 22,255           | 24,865           | 28,095           | 30,810           | 36,300           |
| 2002                           | 13,275           | 15,720           | 18,960           |                  |                  |                  |                  |                  |
| <b>Total</b>                   |                  |                  |                  |                  |                  |                  |                  |                  |
| 2000                           | 78,570           | 95,380           | 113,270          | 131,620          | 151,405          | 170,065          | 190,385          | 230,625          |
| 2001                           | 65,505           | 80,405           | 96,330           | 114,725          | 131,830          | 148,380          | 166,925          | 194,065          |
| 2002                           | 77,610           | 92,790           | 109,100          |                  |                  |                  |                  |                  |
| <b>Dehydrated <sup>4</sup></b> |                  |                  |                  |                  |                  |                  |                  |                  |
| 2000 <sup>5</sup>              |                  |                  |                  |                  |                  |                  |                  | 51,946           |
| 2001 <sup>5</sup>              |                  |                  |                  |                  |                  |                  |                  | 38,581           |
| 2002                           | 15,660           | 19,655           | 23,690           |                  |                  |                  |                  |                  |

<sup>1</sup> Total quantity received and used for processing regardless of the State in which the potatoes were produced. Amount excludes quantities used for potato chips in ME, CO, MI, and WI.

<sup>2</sup> Includes Maine grown potatoes only.

<sup>3</sup> MN, NV, ND, SD, and WI in 2000 and 2001. CO, MN, NV, ND, and WI in 2002.

<sup>4</sup> Dehydrated products except starch and flour. Included in above totals. Includes CO, ID, NV, ND, OR, WA, and WI.

<sup>5</sup> No monthly data available.

**Fall Potatoes: Production and Stocks on February 1, 2002-2003 <sup>1</sup>**

| State     | Crop of 2001     |                          |                 | Crop of 2002     |                          |                 |
|-----------|------------------|--------------------------|-----------------|------------------|--------------------------|-----------------|
|           | Prod             | Stocks<br>Feb 1,<br>2002 | %<br>of<br>Prod | Prod             | Stocks<br>Feb 1,<br>2003 | %<br>of<br>Prod |
|           | <i>1,000 Cwt</i> | <i>1,000 Cwt</i>         | <i>Percent</i>  | <i>1,000 Cwt</i> | <i>1,000 Cwt</i>         | <i>Percent</i>  |
| CA        | 1,424            | 800                      | 56              | 4,450            | 1,300                    | 29              |
| CO        | 21,357           | 11,000                   | 52              | 27,885           | 15,000                   | 54              |
| ID        | 120,200          | 68,000                   | 57              | 133,385          | 72,500                   | 54              |
| ME        | 16,430           | 8,900                    | 54              | 16,960           | 9,500                    | 56              |
| MI        | 13,950           | 4,800                    | 34              | 13,878           | 5,500                    | 40              |
| MN        | 18,425           | 9,500                    | 52              | 18,700           | 9,100                    | 49              |
| MT        | 3,296            | 2,630                    | 80              | 3,224            | 2,900                    | 90              |
| NE        | 8,400            | 3,200                    | 38              | 8,611            | 3,900                    | 45              |
| NY        | 5,942            | 1,000                    | 17              | 5,500            | 1,100                    | 20              |
| ND        | 26,400           | 14,500                   | 55              | 23,460           | 11,200                   | 48              |
| OH        | 1,097            | 60                       | 5               | 1,008            | 120                      | 12              |
| OR        | 20,730           | 14,000                   | 68              | 24,936           | 12,000                   | 48              |
| PA        | 3,173            | 1,000                    | 32              | 2,590            | 850                      | 33              |
| WA        | 94,400           | 40,000                   | 42              | 95,200           | 40,000                   | 42              |
| WI        | 31,955           | 12,800                   | 40              | 31,125           | 12,500                   | 40              |
| 15 States | 387,179          | 192,190                  | 50              | 410,912          | 197,470                  | 48              |

<sup>1</sup> Stocks include processor holdings and most of the seed to plant following year's crop. Seed usage for all seasons in 2002 totaled 29.3 million cwt.

**Fall Potatoes: Stocks by Type as Percent of Total Stocks,  
11 Selected States, February 1, 2002-2003**

| State     | Potato Types   |                |                |                |                |                |                |                |
|-----------|----------------|----------------|----------------|----------------|----------------|----------------|----------------|----------------|
|           | Reds           |                | Round Whites   |                | Long Whites    |                | Russets        |                |
|           | 2002           | 2003           | 2002           | 2003           | 2002           | 2003           | 2002           | 2003           |
|           | <i>Percent</i> | <i>Percent</i> | <i>Percent</i> | <i>Percent</i> | <i>Percent</i> | <i>Percent</i> | <i>Percent</i> | <i>Percent</i> |
| CO        | 6              | 4              | 1              | 1              |                |                | 93             | 95             |
| ID        |                | 1              |                |                | 6              | 4              | 94             | 95             |
| ME        | 3              | 5              | 46             | 44             | 2              | 1              | 49             | 50             |
| MI        | 1              |                | 89             | 98             |                |                | 10             | 2              |
| MN        | 6              | 11             | 5              | 5              |                |                | 89             | 84             |
| NY        | 5              | 5              | 90             | 90             |                |                | 5              | 5              |
| ND        | 16             | 12             | 13             | 15             | 3              | 3              | 68             | 70             |
| OR        |                |                |                | 1              |                | 1              | 100            | 98             |
| PA        | 3              | 3              | 97             | 97             |                |                |                |                |
| WA        | 1              | 1              |                |                | 1              | 3              | 98             | 96             |
| WI        | 1              | 3              | 25             | 24             |                |                | 74             | 73             |
| 11 St Avg | 2              | 3              | 8              | 9              | 3              | 2              | 87             | 86             |

**Fall Potatoes: Production, February 1 Stocks, and Farm Disposition,  
15 Storage States and 23 Fall Season States, 1999-2002 Crop Years**

| State | Crop Year | Production       | Stocks Feb 1     | Total Used For Fall Seed | Farm Disposition     |                    |                  |
|-------|-----------|------------------|------------------|--------------------------|----------------------|--------------------|------------------|
|       |           |                  |                  |                          | Where Grown          |                    | Sold             |
|       |           |                  |                  |                          | Seed, Feed, Home Use | Shrinkage and Loss |                  |
|       |           | <i>1,000 Cwt</i> | <i>1,000 Cwt</i> | <i>1,000 Cwt</i>         | <i>1,000 Cwt</i>     | <i>1,000 Cwt</i>   | <i>1,000 Cwt</i> |
| CA    | 1999      | 4,005            | 2,200            | 183                      | 17                   | 383                | 3,605            |
|       | 2000      | 3,741            | 1,700            | 58                       | 11                   | 300                | 3,430            |
|       | 2001      | 1,424            | 800              | 231                      | 3                    | 128                | 1,293            |
|       | 2002      | 4,450            | 1,300            |                          |                      |                    |                  |
| CO    | 1999      | 25,762           | 15,100           | 1,971                    | 1,705                | 2,967              | 21,090           |
|       | 2000      | 27,972           | 15,100           | 1,771                    | 1,485                | 3,847              | 22,640           |
|       | 2001      | 21,357           | 11,000           | 1,790                    | 1,465                | 1,887              | 18,005           |
|       | 2002      | 27,885           | 15,000           |                          |                      |                    |                  |
| ID    | 1999      | 133,330          | 76,500           | 8,700                    | 1,150                | 9,300              | 122,880          |
|       | 2000      | 152,320          | 87,500           | 8,140                    | 1,190                | 13,718             | 137,412          |
|       | 2001      | 120,200          | 68,000           | 8,690                    | 1,230                | 8,261              | 110,709          |
|       | 2002      | 133,385          | 72,500           |                          |                      |                    |                  |
| ME    | 1999      | 17,813           | 11,300           | 1,408                    | 330                  | 1,850              | 15,633           |
|       | 2000      | 17,920           | 10,900           | 1,302                    | 315                  | 1,490              | 16,115           |
|       | 2001      | 16,430           | 8,900            | 1,344                    | 301                  | 849                | 15,280           |
|       | 2002      | 16,960           | 9,500            |                          |                      |                    |                  |
| MI    | 1999      | 14,963           | 5,800            | 1,005                    | 213                  | 1,300              | 13,450           |
|       | 2000      | 14,963           | 5,200            | 1,135                    | 250                  | 1,700              | 13,013           |
|       | 2001      | 13,950           | 4,800            | 1,181                    | 245                  | 945                | 12,760           |
|       | 2002      | 13,878           | 5,500            |                          |                      |                    |                  |
| MN    | 1999      | 18,020           | 7,500            | 1,254                    | 170                  | 1,980              | 15,870           |
|       | 2000      | 21,240           | 11,600           | 1,140                    | 130                  | 1,700              | 19,410           |
|       | 2001      | 18,425           | 9,500            | 1,159                    | 190                  | 1,700              | 16,535           |
|       | 2002      | 18,700           | 9,100            |                          |                      |                    |                  |
| MT    | 1999      | 3,325            | 3,000            | 276                      | 151                  | 213                | 2,961            |
|       | 2000      | 3,503            | 3,000            | 211                      | 133                  | 732                | 2,638            |
|       | 2001      | 3,296            | 2,630            | 225                      | 152                  | 188                | 2,956            |
|       | 2002      | 3,224            | 2,900            |                          |                      |                    |                  |
| NE    | 1999      | 8,904            | 3,250            | 621                      | 240                  | 711                | 7,953            |
|       | 2000      | 10,127           | 4,600            | 542                      | 182                  | 730                | 9,215            |
|       | 2001      | 8,400            | 3,200            | 557                      | 153                  | 720                | 7,527            |
|       | 2002      | 8,611            | 3,900            |                          |                      |                    |                  |
| NY    | 1999      | 6,758            | 1,800            | 484                      | 95                   | 323                | 6,340            |
|       | 2000      | 5,964            | 1,400            | 517                      | 108                  | 406                | 5,450            |
|       | 2001      | 5,942            | 1,000            | 495                      | 100                  | 502                | 5,340            |
|       | 2002      | 5,500            | 1,100            |                          |                      |                    |                  |

--continued

**Fall Potatoes: Production, February 1 Stocks, and Farm Disposition,  
15 Storage States and 23 Fall Season States, 1999-2002 Crop Years (continued)**

| State    | Crop Year | Production       | Stocks Feb 1     | Total Used For Fall Seed | Farm Disposition     |                    |                  |
|----------|-----------|------------------|------------------|--------------------------|----------------------|--------------------|------------------|
|          |           |                  |                  |                          | Where Grown          |                    | Sold             |
|          |           |                  |                  |                          | Seed, Feed, Home Use | Shrinkage and Loss |                  |
|          |           | <i>1,000 Cwt</i> | <i>1,000 Cwt</i> | <i>1,000 Cwt</i>         | <i>1,000 Cwt</i>     | <i>1,000 Cwt</i>   | <i>1,000 Cwt</i> |
| ND       | 1999      | 26,400           | 11,000           | 2,232                    | 340                  | 4,600              | 21,460           |
|          | 2000      | 26,950           | 13,700           | 2,035                    | 295                  | 3,235              | 23,420           |
|          | 2001      | 26,400           | 14,500           | 2,340                    | 320                  | 3,960              | 22,120           |
|          | 2002      | 23,460           | 11,200           |                          |                      |                    |                  |
| OH       | 1999      | 987              | 100              | 88                       | 6                    | 60                 | 921              |
|          | 2000      | 1,134            | 60               | 102                      | 2                    | 35                 | 1,097            |
|          | 2001      | 1,097            | 60               | 90                       | 3                    | 36                 | 1,058            |
|          | 2002      | 1,008            | 120              |                          |                      |                    |                  |
| OR       | 1999      | 28,020           | 18,600           | 1,368                    | 239                  | 1,607              | 26,174           |
|          | 2000      | 30,683           | 20,000           | 957                      | 140                  | 1,915              | 28,628           |
|          | 2001      | 20,730           | 14,000           | 1,212                    | 175                  | 1,059              | 19,496           |
|          | 2002      | 24,936           | 12,000           |                          |                      |                    |                  |
| PA       | 1999      | 3,080            | 1,000            | 270                      | 31                   | 172                | 2,877            |
|          | 2000      | 3,510            | 1,100            | 252                      | 44                   | 165                | 3,301            |
|          | 2001      | 3,173            | 1,000            | 285                      | 59                   | 120                | 2,994            |
|          | 2002      | 2,590            | 850              |                          |                      |                    |                  |
| WA       | 1999      | 95,200           | 35,000           | 4,320                    | 300                  | 6,500              | 88,400           |
|          | 2000      | 105,000          | 44,500           | 3,960                    | 300                  | 9,500              | 95,200           |
|          | 2001      | 94,400           | 40,000           | 4,200                    | 300                  | 7,000              | 87,100           |
|          | 2002      | 95,200           | 40,000           |                          |                      |                    |                  |
| WI       | 1999      | 34,000           | 15,000           | 1,720                    | 310                  | 1,420              | 32,270           |
|          | 2000      | 33,800           | 13,900           | 1,700                    | 264                  | 1,949              | 31,587           |
|          | 2001      | 31,955           | 12,800           | 1,615                    | 278                  | 1,947              | 29,730           |
|          | 2002      | 31,125           | 12,500           |                          |                      |                    |                  |
| 15 Sts   | 1999      | 420,567          | 207,150          | 25,900                   | 5,297                | 33,386             | 381,884          |
|          | 2000      | 458,827          | 234,260          | 23,822                   | 4,849                | 41,422             | 412,556          |
|          | 2001      | 387,179          | 192,190          | 25,414                   | 4,974                | 29,302             | 352,903          |
|          | 2002      | 410,912          | 197,470          |                          |                      |                    |                  |
| Fall Sts | 1999      | 429,847          |                  | 26,449                   | 5,408                | 34,229             | 390,210          |
|          | 2000      | 467,504          |                  | 24,249                   | 4,968                | 42,257             | 420,279          |
|          | 2001      | 393,750          |                  | 25,834                   | 5,039                | 29,757             | 358,954          |
|          | 2002      | 417,228          |                  |                          |                      |                    |                  |

**Fall Potatoes: Farm Marketings, Selected States,  
1999-2001 Marketing Years**

| State | Crop Year | Jul            | Aug            | Sep            | Oct            | Nov            | Dec            | Jan            | Feb            | Mar            | Apr            | May            | Jun            | Jul            |
|-------|-----------|----------------|----------------|----------------|----------------|----------------|----------------|----------------|----------------|----------------|----------------|----------------|----------------|----------------|
|       |           | <i>Percent</i> | <i>Percent</i> | <i>Percent</i> | <i>Percent</i> | <i>Percent</i> | <i>Percent</i> | <i>Percent</i> | <i>Percent</i> | <i>Percent</i> | <i>Percent</i> | <i>Percent</i> | <i>Percent</i> | <i>Percent</i> |
| CA    | 1999      |                |                |                | 5              | 12             | 14             | 10             | 12             | 9              | 10             | 10             | 11             | 7              |
|       | 2000      |                |                |                | 9              | 11             | 13             | 10             | 9              | 11             | 7              | 11             | 9              | 10             |
|       | 2001      |                |                |                |                | 15             | 11             | 17             | 17             | 22             | 18             |                |                |                |
| CO    | 1999      |                |                | 4              | 7              | 10             | 10             | 10             | 10             | 12             | 11             | 10             | 10             | 6              |
|       | 2000      |                |                | 5              | 8              | 10             | 10             | 11             | 8              | 11             | 11             | 12             | 9              | 5              |
|       | 2001      |                |                | 5              | 10             | 11             | 12             | 12             | 9              | 11             | 10             | 11             | 7              | 2              |
| ID    | 1999      |                | 3              | 15             | 18             | 6              | 6              | 5              | 7              | 9              | 10             | 9              | 6              | 6              |
|       | 2000      |                | 5              | 9              | 10             | 9              | 6              | 7              | 6              | 9              | 9              | 13             | 8              | 9              |
|       | 2001      |                | 3              | 12             | 13             | 8              | 6              | 7              | 9              | 10             | 10             | 10             | 6              | 6              |
| ME    | 1999      |                | 3              | 6              | 7              | 7              | 9              | 10             | 10             | 12             | 16             | 11             | 9              |                |
|       | 2000      |                | 2              | 8              | 8              | 7              | 9              | 9              | 12             | 12             | 15             | 10             | 5              | 3              |
|       | 2001      |                | 1              | 9              | 10             | 9              | 9              | 12             | 11             | 11             | 12             | 8              | 5              | 3              |
| MI    | 1999      | 3              | 7              | 8              | 9              | 15             | 12             | 9              | 9              | 9              | 11             | 6              | 2              |                |
|       | 2000      | 3              | 7              | 8              | 12             | 12             | 12             | 11             | 12             | 11             | 7              | 4              | 1              |                |
|       | 2001      | 3              | 7              | 8              | 12             | 11             | 12             | 13             | 11             | 11             | 8              | 3              | 1              |                |
| MN    | 1999      |                | 8              | 12             | 13             | 11             | 8              | 8              | 7              | 9              | 8              | 6              | 5              | 5              |
|       | 2000      | 2              | 8              | 8              | 7              | 6              | 5              | 6              | 7              | 10             | 11             | 12             | 18             |                |
|       | 2001      |                | 10             | 9              | 7              | 7              | 6              | 7              | 9              | 10             | 10             | 9              | 8              | 8              |
| NY    | 1999      |                | 4              | 21             | 18             | 11             | 9              | 10             | 8              | 9              | 10             |                |                |                |
|       | 2000      |                | 2              | 26             | 18             | 11             | 12             | 8              | 8              | 10             | 5              |                |                |                |
|       | 2001      |                | 4              | 20             | 18             | 17             | 15             | 9              | 7              | 6              | 4              |                |                |                |
| ND    | 1999      |                | 2              | 13             | 20             | 7              | 10             | 12             | 7              | 7              | 8              | 7              | 6              | 1              |
|       | 2000      |                | 4              | 21             | 11             | 10             | 5              | 8              | 5              | 9              | 11             | 8              | 8              |                |
|       | 2001      |                |                | 18             | 10             | 12             | 7              | 8              | 7              | 7              | 14             | 11             | 6              |                |
| OR    | 1999      | 2              | 13             | 10             | 21             | 7              | 6              | 7              | 8              | 7              | 7              | 7              | 3              | 2              |
|       | 2000      | 3              | 9              | 12             | 21             | 4              | 5              | 5              | 6              | 7              | 7              | 9              | 6              | 6              |
|       | 2001      |                | 7              | 13             | 21             | 8              | 6              | 5              | 7              | 7              | 8              | 8              | 7              | 3              |
| PA    | 1999      |                | 14             | 13             | 12             | 12             | 13             | 11             | 9              | 7              | 6              | 2              | 1              |                |
|       | 2000      |                | 14             | 13             | 12             | 12             | 13             | 11             | 9              | 7              | 6              | 2              | 1              |                |
|       | 2001      |                | 17             | 16             | 15             | 12             | 12             | 10             | 8              | 7              | 2              | 1              |                |                |
| WA    | 1999      |                | 17             | 14             | 24             | 6              | 6              | 5              | 5              | 6              | 5              | 6              | 5              | 1              |
|       | 2000      |                | 16             | 14             | 25             | 7              | 4              | 6              | 5              | 5              | 5              | 5              | 5              | 3              |
|       | 2001      |                | 11             | 13             | 25             | 7              | 6              | 5              | 7              | 7              | 6              | 7              | 5              | 1              |
| WI    | 1999      | 2              | 7              | 16             | 12             | 11             | 9              | 8              | 10             | 9              | 9              | 5              | 2              |                |
|       | 2000      | 1              | 7              | 15             | 14             | 11             | 8              | 8              | 9              | 10             | 10             | 5              | 2              |                |
|       | 2001      | 1              | 6              | 13             | 14             | 12             | 10             | 9              | 8              | 10             | 11             | 5              | 1              |                |

## February Potato Stocks Up 3 Percent

The 15 major potato States held 197 million cwt of potatoes on February 1, 2003, up 3 percent from last year but 16 percent below 2001. Storage accounts for 48 percent of the 2002 fall storage State's production, down 2 percentage points from last year. Stocks by type are 3 percent red, 9 percent round white, 2 percent long white (Shepody), and 86 percent russet. There are more reds and round whites but fewer long whites and russets than a year ago.

Disappearance, at 213 million cwt, from the start of harvest to February 1, is up 9 percent from the same period last year but 5 percent below two years ago. January disappearance was 34.7 million cwt, up 7 percent from a year ago but 15 percent below two years ago. Shrink and loss, at 20.4 million cwt, is up 3 percent from last year but 22 percent below two years ago.

Processors used 109 million cwt of 2002 crop potatoes so far this season, up 13 percent from a year ago but 4 percent below two years ago. January usage of 16.3 million cwt is 2 percent above last year but 9 percent below two years ago. Dehydrators used 23.7 million cwt to date.

Western States held 144 million cwt of potatoes in storage on February 1, up 5 percent from last year but 16 percent below two years ago. Idaho's potato stocks are up 7 percent from last year and Colorado's are up 36 percent. California's stocks are 63 percent above last year and Montana's are up 10 percent. Washington's potato stocks are equal to last year, while Oregon's storage is down 14 percent.

Central States account for 42.3 million cwt of potato stocks this February 1, down 6 percent from last year and 14 percent below two years ago. North Dakota's stocks dropped 23 percent, Minnesota slipped 4 percent, and Wisconsin is down 2 percent from a year earlier. Potato stocks in Nebraska are up 22 percent from last year, Michigan is up 15 percent, and Ohio's small remainder is double last year's level.

Eastern States stored 11.5 million cwt of potatoes on February 1, up 5 percent from last year but 15 percent below the 2000 crop. Maine's stocks are up 7 percent and New York's are up 10 percent from a year ago, while Pennsylvania's have dropped 15 percent from last year.

**Potatoes: Shrinkage and Loss, 15 Fall Storage States, 1999-2002**

| Crop Year | To Dec 1           | To Jan 1           | To Feb 1           | To Mar 1           | To Apr 1           | To May 1           | Total Jun 1        | Season             |
|-----------|--------------------|--------------------|--------------------|--------------------|--------------------|--------------------|--------------------|--------------------|
|           | <i>Million Cwt</i> | <i>Million Cwt</i> | <i>Million Cwt</i> | <i>Million Cwt</i> | <i>Million Cwt</i> | <i>Million Cwt</i> | <i>Million Cwt</i> | <i>Million Cwt</i> |
| 1999      | 19.7               | 22.4               | 24.1               | 25.9               | 27.7               | 29.6               | 31.3               | 33.4               |
| 2000      | 18.7               | 21.3               | 26.3               | 29.2               | 33.1               | 36.0               | 38.4               | 41.4               |
| 2001      | 14.7               | 17.3               | 19.7               | 21.7               | 23.5               | 25.1               | 26.7               | 29.3               |
| 2002      | 16.2               | 18.4               | 20.4               |                    |                    |                    |                    |                    |

## Reliability of February 1 Stocks Estimates

The "Root Mean Square Error" for the February 1 stocks estimate is 3.2 percent. This means that chances are 2 out of 3 that the current estimate of 197 million cwt will not be above or below the final estimate by more than 3.2 percent or approximately 6.3 million cwt. Chances are 9 out of 10 (90 percent confidence level) that the difference will not exceed 5.6 percent or approximately 11.1 million cwt.

The 10-year (1992-2001) record of differences between the February 1 stocks estimates and the final estimates averaged 5.8 million cwt, ranging from 9.6 million cwt above the final to 14.2 million cwt below the final. During the 10-year period, the February 1 estimate has been below the final estimate 7 years and above 3 years.

### Fall Potato Stocks: Preliminary and Final February 1 Stocks, United States, 1992-2002

| Crop Year | Preliminary Stocks |         | % of Final     |       | Final Stocks     |         |
|-----------|--------------------|---------|----------------|-------|------------------|---------|
|           | <i>1,000 Cwt</i>   |         | <i>Percent</i> |       | <i>1,000 Cwt</i> |         |
| 1992      |                    | 170,385 |                | 92.3  |                  | 184,560 |
| 1993      |                    | 178,070 |                | 96.0  |                  | 185,490 |
| 1994      |                    | 196,005 |                | 96.8  |                  | 202,470 |
| 1995      |                    | 184,755 |                | 97.6  |                  | 189,360 |
| 1996      |                    | 220,465 |                | 97.5  |                  | 226,080 |
| 1997      |                    | 205,850 |                | 96.8  |                  | 212,562 |
| 1998      |                    | 211,100 |                | 100.7 |                  | 209,640 |
| 1999      |                    | 205,780 |                | 99.3  |                  | 207,150 |
| 2000      |                    | 235,050 |                | 100.3 |                  | 234,260 |
| 2001      |                    | 201,750 |                | 105.0 |                  | 192,190 |
| 2002      |                    | 197,470 |                |       |                  |         |

NOTE: Stocks are defined as the quantity (whether sold or not) remaining in storage for all purposes and uses, including seed potatoes not yet moved, and shrinkage, waste, and other losses that occur after the date of each report. Sales of fall potatoes for all purposes for the past 5 years averaged 90.8 percent of the total fall production. Shrinkage, loss, and home use account for the remaining 9.2 percent.

### Potatoes: Production, Sold, Not Sold, and Kept for Seed, United States, 1997-2002

| Crop Year | Fall Potatoes    |                  |                   |                  |                       | Amount Used for Seed All Seasons Following year |
|-----------|------------------|------------------|-------------------|------------------|-----------------------|---|
|           | Production       | Sold             | Sold as % of Prod | Not Sold         | Not Sold as % of Prod |   |
|           | <i>1,000 Cwt</i> | <i>1,000 Cwt</i> | <i>Percent</i>    | <i>1,000 Cwt</i> | <i>Percent</i>        | <i>1,000 Cwt</i>                                |
| 1997      | 423,190          | 387,089          | 91.5              | 36,101           | 8.5                   | 29,975  |
| 1998      | 432,737          | 392,922          | 90.8              | 39,815           | 9.2                   | 29,217  |
| 1999      | 429,847          | 390,210          | 90.8              | 39,637           | 9.2                   | 29,709  |
| 2000      | 467,504          | 420,279          | 89.9              | 47,225           | 10.1                  | 27,145  |
| 2001      | 393,750          | 358,954          | 91.2              | 34,796           | 8.8                   | 29,251  |
| 2002      | 417,228          |                  |                   |                  |                       |   |



### Fall Potatoes: Percent of Varieties Planted, 2002 Crop (Revised)

The table below is a correction of the "Percent of Major Varieties Planted" table published in the November 2002 Crop Production report. Silverton Russets were erroneously coded in the original publication. The source of the data is the Potato Objective Yield Survey and a special variety survey from Colorado accounting for 89 percent of the estimated U. S. fall potato production. Variety data shown below are actual percentages from these surveys.

**Fall Potatoes: Percent of Major Varieties Planted,  
Selected States and 8 States Total, 2002 Crop**

| State and Varieties | Pct. of Planted Acres | State and Varieties | Pct. of Planted Acres | State and Varieties | Pct. of Planted Acres |
|---------------------|-----------------------|---------------------|-----------------------|---------------------|-----------------------|
| CO                  |                       | La Soda             | 2.2                   | WI                  |                       |
| R Norkotah          | 59.1                  | NorValley           | 1.7                   | R Burbank           | 18.7                  |
| R Nugget            | 12.7                  | Shepody             | 1.4                   | R Norkotah          | 17.7                  |
| Centennial R        | 6.5                   | Snowden             | 1.2                   | Frito-Lay           | 15.3                  |
| Yukon Gold          | 3.6                   | Yukon Gold          | 1.1                   | Goldrush            | 11.9                  |
| Sangre              | 2.0                   | Other               | 10.1                  | Norland             | 9.8                   |
| Silverton R         | 1.9                   | Total               | 100.0                 | Snowden             | 6.1                   |
| Cherry Red          | 0.8                   |                     |                       | Superior            | 5.7                   |
| Other               | 13.4                  | ND                  |                       | Silverton R         | 5.5                   |
| Total               | 100.0                 | R Burbank           | 39.3                  | Atlantic            | 2.7                   |
|                     |                       | Shepody             | 20.1                  | Pike                | 1.1                   |
| ID                  |                       | NorValley           | 10.2                  | Ontario             | 1.0                   |
| R Burbank           | 71.0                  | Norland             | 5.6                   | Other               | 4.5                   |
| Ranger R            | 12.0                  | Frito-Lay           | 4.8                   | Total               | 100.0                 |
| R Norkotah          | 7.5                   | Dakota Pearl        | 3.4                   |                     |                       |
| Shepody             | 3.4                   | Snowden             | 2.6                   | TOTAL(8 States)     |                       |
| Other               | 6.1                   | La Soda             | 2.3                   | R Burbank           | 45.9                  |
| Total               | 100.0                 | Goldrush            | 2.2                   | R Norkotah          | 11.8                  |
|                     |                       | La Rouge            | 1.3                   | Ranger R            | 9.3                   |
| ME                  |                       | Other               | 8.2                   | Shepody             | 7.1                   |
| R Burbank           | 36.4                  | Total               | 100.0                 | Frito-Lay           | 3.1                   |
| Frito-Lay           | 10.9                  |                     |                       | Norland             | 2.8                   |
| Ontario             | 9.7                   | OR                  |                       | Umatilla R          | 1.5                   |
| Shepody             | 9.2                   | R Burbank           | 24.3                  | Goldrush            | 1.3                   |
| Superior            | 7.2                   | Ranger R            | 19.2                  | NorValley           | 1.3                   |
| R Norkotah          | 4.7                   | Shepody             | 18.8                  | Snowden             | 1.0                   |
| Atlantic            | 3.4                   | R Norkotah          | 16.8                  | Superior            | 1.0                   |
| Norwis              | 2.2                   | Frito-Lay           | 11.0                  | R Nugget            | 0.9                   |
| Chieftain           | 1.8                   | Umatilla R          | 1.8                   | Chieftain           | 0.8                   |
| Katahdin            | 1.6                   | Other               | 8.1                   | La Soda             | 0.7                   |
| Norland             | 1.6                   | Total               | 100.0                 | Ontario             | 0.6                   |
| Snowden             | 1.4                   |                     |                       | Silverton R         | 0.6                   |
| Yukon Gold          | 1.4                   | WA                  |                       | Centennial R        | 0.5                   |
| Goldrush            | 1.1                   | R Burbank           | 34.8                  | Atlantic            | 0.4                   |
| Other               | 7.4                   | Ranger R            | 22.3                  | Yukon Gold          | 0.4                   |
| Total               | 100.0                 | R Norkotah          | 11.8                  | Dakota Pearl        | 0.4                   |
|                     |                       | Shepody             | 10.3                  | Pontiac             | 0.3                   |
| MN                  |                       | Umatilla R          | 8.1                   | Cascade             | 0.2                   |
| R Burbank           | 55.2                  | Chieftain           | 3.9                   | La Rouge            | 0.2                   |
| Norland             | 20.1                  | La Soda             | 1.8                   | Sangre              | 0.1                   |
| Pontiac             | 4.2                   | Other               | 7.0                   | Other               | 7.8                   |
| Cascade             | 2.8                   | Total               | 100.0                 | Total               | 100.0                 |

The next "Potato Stocks" report will be released at 3 p.m. ET on March 13, 2003.

The United States Department of Agriculture (USDA) prohibits discrimination in all its programs on the basis of race, color, national origin, gender, religion, age, disability, political beliefs, sexual orientation, and marital or family status. (Not all prohibited bases apply to all programs.) Persons with disabilities who require alternative means for communication of program information (braille, large print, audiotape, etc.) should contact the USDA's TARGET Center at 202-720-2600 (voice and TDD).

To file a complaint of discrimination, write USDA, Director, Office of Civil Rights, Room 326-W, Whitten Building, 1400 Independence Avenue, SW, Washington, D.C., 20250-9410, or call 202-720-5964 (voice or TDD). USDA is an equal opportunity provider and employer.

## **ACCESS TO REPORTS!!**

---

For your convenience, there are several ways to obtain NASS reports, data products, and services:

### **INTERNET ACCESS**

All NASS reports are available free of charge on the worldwide Internet. For access, connect to the Internet and go to the NASS Home Page at: <http://www.usda.gov/nass/>. Select "Today's Reports" or Publications and then Reports Calendar or Publications and then Search, by Title or Subject.

### **E-MAIL SUBSCRIPTION**

All NASS reports are available by subscription free of charge direct to your e-mail address. Starting with the NASS Home Page at <http://www.usda.gov/nass/>, click on **Publications**, then click on the **Subscribe by E-mail** button which takes you to the page describing e-mail delivery of reports. Finally, click on **Go to the Subscription Page** and follow the instructions.

### **AUTOFAX ACCESS**

NASSFax service is available for some reports from your fax machine. Please call 202-720-2000, using the handset attached to your fax. Respond to the voice prompts. Document 0411 is a list of available reports.

-----

### **PRINTED REPORTS OR DATA PRODUCTS**

**CALL OUR TOLL-FREE ORDER DESK: 800-999-6779 (U.S. and Canada)**  
**Other areas, please call 703-605-6220      FAX: 703-605-6900**  
**(Visa, MasterCard, check, or money order acceptable for payment.)**

-----

### **ASSISTANCE**

For **assistance** with general agricultural statistics or further information about NASS or its products or services, contact the **Agricultural Statistics Hotline** at **800-727-9540**, 7:30 a.m. to 4:00 p.m. ET, or e-mail: [nass@nass.usda.gov](mailto:nass@nass.usda.gov).

---

# Competing in the 21st Century

---

## Agricultural Outlook Forum 2003



**February 20-21, 2003**

**Crystal Gateway**

**Marriott Hotel**

**Arlington, Virginia**

**2003 Commodity Prospects  
Emerging Export Competitors  
Farming under New Programs  
Coping with Regulations  
Shifting consumer Preferences  
Ensuring Food Safety  
Impact of El Nino**

Sharpen your strategic focus at USDA's 79th annual Agricultural Outlook Forum. Note experts, industry leaders and producers will discuss many facets of competing in domestic and world markets.

The program will examine growing competition from Central and Eastern Europe, Brazil and Asia, as well as progress in WTO negotiations.

Focus sessions will highlight many challenges producers face in the competitive arena, ranging from the growing complexity and cost of regulation, to dealing with food safety and changing eating habits.

As always, leading analysts will be on hand to debate planting, trade and price prospects for farm commodities for the year ahead. Attendees will receive new 10-year commodity projections from USDA.

Networking opportunities abound at the Forum, which attracted 1,400 attendees last February. Register now for the best value. See full details at [www.usda.gov/oce](http://www.usda.gov/oce).

**[www.usda.gov/oce](http://www.usda.gov/oce)   [agforum@oce.usda.gov](mailto:agforum@oce.usda.gov)   (877) 891-2208 toll free**