

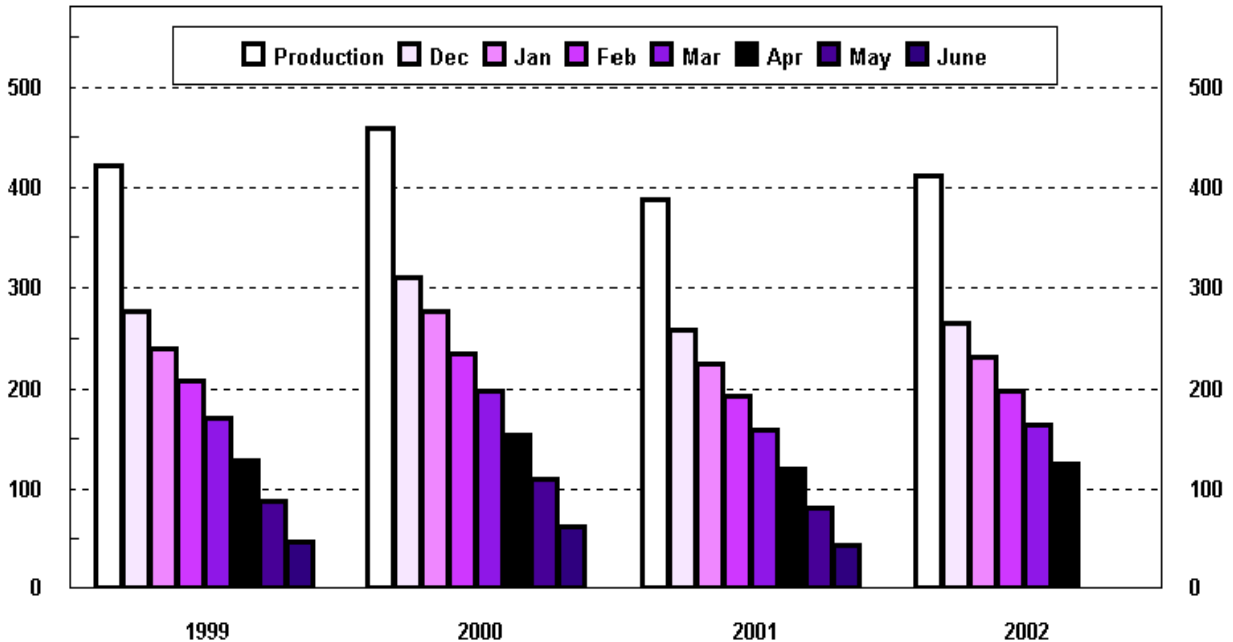
Released April 15, 2003, by the National Agricultural Statistics Service (NASS), Agricultural Statistics Board, U.S. Department of Agriculture. For information on "Potato Stocks" call Arvin Budge at (202) 720-4285, office hours 7:30 a.m. to 4:00 p.m. ET.

Potato Stocks Up 4 Percent

The 15 major potato States held 125 million cwt of potatoes in storage April 1, 2003, up 4 percent from last year but 19 percent below 2001. Storage accounts for 30 percent of the 2002 fall storage States' production, down 1 percentage point from last year. Disappearance of 286 million cwt of potatoes from the 2002 crop is up 7 percent from 2001 but 6 percent below 2000 crop movement. Shrink and loss, of 23.9 million cwt so far in the 2002 season, is up 2 percent from last year but 28 percent below two years ago. Processors in the 9 major States used 145 million cwt of potatoes this season, up 10 percent from a year ago but 4 percent below two years ago. Dehydrating usage accounts for 31.9 million cwt of the total processing.

Fall Potatoes: Production and Stocks 15 Storage States

Mil Cwt



Production by crop year. Stocks by months following harvest.

Fall Potatoes: Production and Stocks, 15 Major States, 1993-2002

Crop Year	Production	Dec 1	Jan 1	Feb 1	Mar 1	Apr 1	May 1	Jun 1 ¹
	<i>1,000 Cwt</i>	<i>1,000 Cwt</i>	<i>1,000 Cwt</i>	<i>1,000 Cwt</i>	<i>1,000 Cwt</i>	<i>1,000 Cwt</i>	<i>1,000 Cwt</i>	<i>1,000 Cwt</i>
1993	376,954	249,410	217,300	185,490	153,435	115,170	72,860	
1994	410,839	273,290	238,560	202,470	169,570	129,825	87,600	
1995	394,785	256,710	223,550	189,360	156,020	115,855	75,870	
1996	443,704	295,100	261,320	226,080	189,210	147,635	103,210	
1997	413,513	278,830	246,550	212,562	175,870	134,190	92,840	
1998	423,170	280,910	246,230	209,640	173,650	131,220	87,895	50,270
1999	420,567	275,100	239,910	207,150	169,620	128,410	86,915	47,220
2000	458,827	310,300	275,270	234,260	197,670	153,520	109,160	61,240
2001	387,179	258,750	224,680	192,190	158,590	119,950	81,200	42,990
2002	410,912	265,890	232,140	197,470	163,900	125,030		

¹ Data not available prior to 1998.

Potatoes: Quantity Used for Processing, 9 States, 2000-2002 ¹

State and Crop Year	Dec 1	Jan 1	Feb 1	Mar 1	Apr 1	May 1	Jun 1	Season
	<i>1,000 Cwt</i>	<i>1,000 Cwt</i>	<i>1,000 Cwt</i>	<i>1,000 Cwt</i>	<i>1,000 Cwt</i>	<i>1,000 Cwt</i>	<i>1,000 Cwt</i>	<i>1,000 Cwt</i>
ID & OR-Mal								
2000	29,290	35,720	43,470	50,580	58,910	66,760	75,270	93,460
2001	20,940	27,330	33,620	40,860	47,710	54,150	61,200	73,390
2002	28,380	34,860	41,200	48,600	56,240			
ME ²								
2000	1,845	2,475	3,105	3,695	4,225	4,760	5,340	7,015
2001	1,975	2,440	3,110	3,700	4,285	4,775	5,515	7,195
2002	2,275	2,720	3,300	3,855	4,485			
WA & OR-Oth								
2000	34,770	40,970	47,720	55,250	62,860	69,850	78,010	91,130
2001	29,320	35,310	40,540	47,910	54,970	61,360	69,400	77,180
2002	33,680	39,490	44,190	51,920	58,710			
Oth Sts ³								
2000	12,665	16,215	18,975	22,095	25,410	28,695	31,765	39,020
2001	13,270	15,325	19,060	22,255	24,865	28,095	30,810	36,300
2002	13,275	15,720	18,960	22,115	25,205			
Total								
2000	78,570	95,380	113,270	131,620	151,405	170,065	190,385	230,625
2001	65,505	80,405	96,330	114,725	131,830	148,380	166,925	194,065
2002	77,610	92,790	107,650	126,490	144,640			
Dehydrated ⁴								
2000 ⁵								51,946
2001 ⁵								38,581
2002	15,660	19,655	23,690	27,950	31,915			

¹ Total quantity received and used for processing regardless of the State in which the potatoes were produced. Amount excludes quantities used for potato chips in ME, CO, MI, and WI.

² Includes Maine grown potatoes only.

³ MN, NV, ND, SD, and WI in 2000 and 2001. CO, MN, NV, ND, and WI in 2002.

⁴ Dehydrated products except starch and flour. Included in above totals. Includes CO, ID, NV, ND, OR, WA, and WI.

⁵ No monthly data available.

Fall Potatoes: Production and Stocks on April 1, 2002-2003 ¹

State	Crop of 2001			Crop of 2002		
	Prod	Stocks Apr 1, 2002	% of Prod	Prod	Stocks Apr 1, 2003	% of Prod
	<i>1,000 Cwt</i>	<i>1,000 Cwt</i>	<i>Percent</i>	<i>1,000 Cwt</i>	<i>1,000 Cwt</i>	<i>Percent</i>
CA	1,424	300	21	4,450	600	13
CO	21,357	7,300	34	27,885	9,500	34
ID	120,200	45,000	37	133,385	49,000	37
ME	16,430	5,300	32	16,960	6,300	37
MI	13,950	1,500	11	13,878	2,800	20
MN	18,425	6,100	33	18,700	6,100	33
MT	3,296	1,790	54	3,224	1,800	56
NE ²	8,400			8,611		
NY	5,942	300	5	5,500	300	5
ND	26,400	10,400	39	23,460	7,000	30
OH ²	1,097			1,008		
OR	20,730	8,500	41	24,936	7,500	30
PA	3,173	300	9	2,590	350	14
WA	94,400	25,000	26	95,200	25,500	27
WI	31,955	6,700	21	31,125	6,200	20
Oth Sts		1,460			2,080	
15 States	387,179	119,950	31	410,912	125,030	30

¹ Stocks include processor holdings and most of the seed to plant following year's crop. Seed usage for all seasons in 2002 totaled 29.3 million cwt.

² Combined into "Other States".

Potatoes: Shrinkage and Loss, 15 Fall Storage States, 1999-2002

Crop Year	To Dec 1	To Jan 1	To Feb 1	To Mar 1	To Apr 1	To May 1	Total Jun 1	Season
	<i>Million Cwt</i>	<i>Million Cwt</i>	<i>Million Cwt</i>	<i>Million Cwt</i>	<i>Million Cwt</i>	<i>Million Cwt</i>	<i>Million Cwt</i>	<i>Million Cwt</i>
1999	19.7	22.4	24.1	25.9	27.7	29.6	31.3	33.4
2000	18.7	21.3	26.3	29.2	33.1	36.0	38.4	41.4
2001	14.7	17.3	19.7	21.7	23.5	25.1	26.7	29.3
2002	16.2	18.4	20.4	22.2	23.9			

**Fall Potatoes: Production, April 1 Stocks, and Farm Disposition,
15 Storage States and 23 Fall Season States, 1999-2002 Crop Years**

State	Crop Year	Production	Stocks Apr 1	Total Used For Fall Seed	Farm Disposition		
					Where Grown		Sold
					Seed, Feed, Home Use	Shrinkage and Loss	
		<i>1,000 Cwt</i>	<i>1,000 Cwt</i>	<i>1,000 Cwt</i>	<i>1,000 Cwt</i>	<i>1,000 Cwt</i>	<i>1,000 Cwt</i>
CA	1999	4,005	1,400	183	17	383	3,605
	2000	3,741	1,100	58	11	300	3,430
	2001	1,424	300	231	3	128	1,293
	2002	4,450	600				
CO	1999	25,762	10,100	1,971	1,705	2,967	21,090
	2000	27,972	10,300	1,771	1,485	3,847	22,640
	2001	21,357	7,300	1,790	1,465	1,887	18,005
	2002	27,885	9,500				
ID	1999	133,330	50,000	8,700	1,150	9,300	122,880
	2000	152,320	61,500	8,140	1,190	13,718	137,412
	2001	120,200	45,000	8,690	1,230	8,261	110,709
	2002	133,385	49,000				
ME	1999	17,813	7,200	1,408	330	1,850	15,633
	2000	17,920	6,600	1,302	315	1,490	16,115
	2001	16,430	5,300	1,344	301	849	15,280
	2002	16,960	6,300				
MI	1999	14,963	2,700	1,005	213	1,300	13,450
	2000	14,963	1,500	1,135	250	1,700	13,013
	2001	13,950	1,500	1,181	245	945	12,760
	2002	13,878	2,800				
MN	1999	18,020	4,700	1,254	170	1,980	15,870
	2000	21,240	8,100	1,140	130	1,700	19,410
	2001	18,425	6,100	1,159	190	1,700	16,535
	2002	18,700	6,100				
MT	1999	3,325	1,650	276	151	213	2,961
	2000	3,503	2,200	211	133	732	2,638
	2001	3,296	1,790	225	152	188	2,956
	2002	3,224	1,800				
NE ¹	1999	8,904		621	240	711	7,953
	2000	10,127		542	182	730	9,215
	2001	8,400		557	153	720	7,527
	2002	8,611					
NY	1999	6,758	700	484	95	323	6,340
	2000	5,964	400	517	108	406	5,450
	2001	5,942	300	495	100	502	5,340
	2002	5,500	300				

--continued

**Fall Potatoes: Production, April 1 Stocks, and Farm Disposition,
15 Storage States and 23 Fall Season States, 1999-2002 Crop Years (continued)**

State	Crop Year	Production	Stocks Apr 1	Total Used For Fall Seed	Farm Disposition		
					Where Grown		Sold
					Seed, Feed, Home Use	Shrinkage and Loss	
		<i>1,000 Cwt</i>	<i>1,000 Cwt</i>	<i>1,000 Cwt</i>	<i>1,000 Cwt</i>	<i>1,000 Cwt</i>	<i>1,000 Cwt</i>
ND	1999	26,400	6,900	2,232	340	4,600	21,460
	2000	26,950	9,500	2,035	295	3,235	23,420
	2001	26,400	10,400	2,340	320	3,960	22,120
	2002	23,460	7,000				
OH ¹	1999	987		88	6	60	921
	2000	1,134		102	2	35	1,097
	2001	1,097		90	3	36	1,058
	2002	1,008					
OR	1999	28,020	13,000	1,368	239	1,607	26,174
	2000	30,683	13,600	957	140	1,915	28,628
	2001	20,730	8,500	1,212	175	1,059	19,496
	2002	24,936	7,500				
PA	1999	3,080	500	270	31	172	2,877
	2000	3,510	300	252	44	165	3,301
	2001	3,173	300	285	59	120	2,994
	2002	2,590	350				
WA	1999	95,200	20,500	4,320	300	6,500	88,400
	2000	105,000	29,500	3,960	300	9,500	95,200
	2001	94,400	25,000	4,200	300	7,000	87,100
	2002	95,200	25,500				
WI	1999	34,000	7,700	1,720	310	1,420	32,270
	2000	33,800	6,900	1,700	264	1,949	31,587
	2001	31,955	6,700	1,615	278	1,947	29,730
	2002	31,125	6,200				
Oth Sts	1999		1,360				
	2000		2,020				
	2001		1,460				
	2002		2,080				
15 Sts	1999	420,567	128,410	25,900	5,297	33,386	381,884
	2000	458,827	153,520	23,822	4,849	41,422	412,556
	2001	387,179	119,950	25,414	4,974	29,302	352,903
	2002	410,912	125,030				
Fall Sts	1999	429,847		26,449	5,408	34,229	390,210
	2000	467,504		23,868	4,968	42,257	420,279
	2001	393,750		25,834	5,039	29,757	358,954
	2002	417,228					

¹ Combined into "Other States".

**Fall Potatoes: Farm Marketings, Selected States,
1999-2001 Marketing Years**

State	Crop Year	Jul	Aug	Sep	Oct	Nov	Dec	Jan	Feb	Mar	Apr	May	Jun	Jul
		<i>Percent</i>	<i>Percent</i>	<i>Percent</i>	<i>Percent</i>	<i>Percent</i>	<i>Percent</i>	<i>Percent</i>	<i>Percent</i>	<i>Percent</i>	<i>Percent</i>	<i>Percent</i>	<i>Percent</i>	<i>Percent</i>
CA	1999				5	12	14	10	12	9	10	10	11	7
	2000				9	11	13	10	9	11	7	11	9	10
	2001					15	11	17	17	22	18			
CO	1999			4	7	10	10	10	10	12	11	10	10	6
	2000			5	8	10	10	11	8	11	11	12	9	5
	2001			5	10	11	12	12	9	11	10	11	7	2
ID	1999		3	15	18	6	6	5	7	9	10	9	6	6
	2000		5	9	10	9	6	7	6	9	9	13	8	9
	2001		3	12	13	8	6	7	9	10	10	10	6	6
ME	1999		3	6	7	7	9	10	10	12	16	11	9	
	2000		2	8	8	7	9	9	12	12	15	10	5	3
	2001		1	9	10	9	9	12	11	11	12	8	5	3
MI	1999	3	7	8	9	15	12	9	9	9	11	6	2	
	2000	3	7	8	12	12	12	11	12	11	7	4	1	
	2001	3	7	8	12	11	12	13	11	11	8	3	1	
MN	1999		8	12	13	11	8	8	7	9	8	6	5	5
	2000	2	8	8	7	6	5	6	7	10	11	12	18	
	2001		10	9	7	7	6	7	9	10	10	9	8	8
NY	1999		4	21	18	11	9	10	8	9	10			
	2000		2	26	18	11	12	8	8	10	5			
	2001		4	20	18	17	15	9	7	6	4			
ND	1999		2	13	20	7	10	12	7	7	8	7	6	1
	2000		4	21	11	10	5	8	5	9	11	8	8	
	2001			18	10	12	7	8	7	7	14	11	6	
OR	1999	2	13	10	21	7	6	7	8	7	7	7	3	2
	2000	3	9	12	21	4	5	5	6	7	7	9	6	6
	2001		7	13	21	8	6	5	7	7	8	8	7	3
PA	1999		14	13	12	12	13	11	9	7	6	2	1	
	2000		14	13	12	12	13	11	9	7	6	2	1	
	2001		17	16	15	12	12	10	8	7	2	1		
WA	1999		17	14	24	6	6	5	5	6	5	6	5	1
	2000		16	14	25	7	4	6	5	5	5	5	5	3
	2001		11	13	25	7	6	5	7	7	6	7	5	1
WI	1999	2	7	16	12	11	9	8	10	9	9	5	2	
	2000	1	7	15	14	11	8	8	9	10	10	5	2	
	2001	1	6	13	14	12	10	9	8	10	11	5	1	

April Potato Stocks Up 4 Percent

The 15 major potato storage States held 125 million cwt of potatoes on April 1, 2003, up 4 percent from last year but 19 percent below 2001. Storage accounts for 30 percent of the 2002 fall storage State's production, down 1 percentage point from last year.

Disappearance, at 286 million cwt, from the start of harvest in 2002 to April 1, is up 7 percent from the same period last year but 6 percent below two years ago. March disappearance was 38.9 million cwt, up 1 percent from a year ago but 12 percent below two years ago. Shrink and loss, at 23.9 million cwt, is up 2 percent from last year but 28 percent below two years ago.

Processors used 145 million cwt of 2002 crop potatoes so far this season, up 10 percent from a year ago but 4 percent below two years ago. March usage of 18.2 million cwt is 6 percent above last year but 8 percent below two years ago. Dehydrators used 31.9 million cwt to date.

Western States held 93.9 million cwt of potatoes in storage on April 1, up 7 percent from last year but 21 percent below two years ago. Idaho's potato stocks are up 9 percent from last year and Colorado's are up 30 percent. Washington's potato stocks are 2 percent above last year but Oregon's storage is down 12 percent. California's stocks are double last year and Montana's are up 1 percent.

Central States account for 24.2 million cwt of potato stocks this April 1, down 8 percent from last year and 14 percent below two years ago. North Dakota's stocks dropped 33 percent, Wisconsin's stocks are down 7 percent from a year earlier, but Minnesota's stocks are the same as last year. Potatoes stored in Michigan are up 87 percent from last year, while stocks in Nebraska and Ohio together are up 42 percent.

Eastern States stored 6.95 million cwt of potatoes on April 1, up 18 percent from last year but 5 percent below the 2000 crop. Maine's stocks are up 19 percent from last year, Pennsylvania's gained 17 percent, but New York's are unchanged from a year ago.

Reliability of April 1 Stocks Estimates

The "Root Mean Square Error" for the April 1 stocks estimate is 4.8 percent. This means that chances are 2 out of 3 that the current estimate of 125 million cwt will not be above or below the final estimate by more than 4.8 percent or approximately 6.0 million cwt. Chances are 9 out of 10 (90 percent confidence level) that the difference will not exceed 8.4 percent or approximately 10.5 million cwt.

The 10-year (1993-2002) record of differences between the April 1 stocks estimates and the final estimates averaged 4.9 million cwt, ranging from 8.98 million cwt above the final to 12.8 million cwt below the final. During the 10-year period, the April 1 estimate has been below the final estimate 8 years and above 2 years.

**Fall Potato Stocks: Preliminary and Final April 1 Stocks,
United States, 1992-2002**

Crop Year	Preliminary Stocks	% of Final	Final Stocks
	<i>1,000 Cwt</i>	<i>Percent</i>	<i>1,000 Cwt</i>
1992	103,010	89.0	115,785
1993	108,455	94.2	115,170
1994	123,285	95.0	129,825
1995	112,925	97.5	115,855
1996	143,235	97.1	147,585
1997	129,340	96.4	134,190
1998	130,890	99.7	131,220
1999	127,570	99.3	128,410
2000	154,030	100.3	153,520
2001	128,930	107.5	119,950
2002	125,030		

NOTE: Stocks are defined as the quantity (whether sold or not) remaining in storage for all purposes and uses, including seed potatoes not yet moved, and shrinkage, waste, and other losses that occur after the date of each report. Sales of fall potatoes for all purposes for the past 5 years averaged 90.8 percent of the total fall production. Shrinkage, loss, and home use account for the remaining 9.2 percent.

**Potatoes: Production, Sold, Not Sold, and Kept for Seed,
United States, 1997-2002**

Crop Year	Fall Potatoes					Amount Used for Seed All Seasons Following year
	Production	Sold	Sold as % of Prod	Not Sold	Not Sold as % of Prod	
	<i>1,000 Cwt</i>	<i>1,000 Cwt</i>	<i>Percent</i>	<i>1,000 Cwt</i>	<i>Percent</i>	<i>1,000 Cwt</i>
1997	423,190	387,089	91.5	36,101	8.5	29,975
1998	432,737	392,922	90.8	39,815	9.2	29,217
1999	429,847	390,210	90.8	39,637	9.2	29,709
2000	467,504	420,279	89.9	47,225	10.1	27,145
2001	393,750	358,954	91.2	34,796	8.8	29,251
2002	417,228					

The next "Potato Stocks" report will be released at 3 p.m. ET on May 14, 2003.

The United States Department of Agriculture (USDA) prohibits discrimination in all its programs on the basis of race, color, national origin, gender, religion, age, disability, political beliefs, sexual orientation, and marital or family status. (Not all prohibited bases apply to all programs.) Persons with disabilities who require alternative means for communication of program information (braille, large print, audiotape, etc.) should contact the USDA's TARGET Center at 202-720-2600 (voice and TDD).

To file a complaint of discrimination, write USDA, Director, Office of Civil Rights, Room 326-W, Whitten Building, 1400 Independence Avenue, SW, Washington, D.C., 20250-9410, or call 202-720-5964 (voice or TDD). USDA is an equal opportunity provider and employer.

ACCESS TO REPORTS!!

For your convenience, there are several ways to obtain NASS reports, data products, and services:

INTERNET ACCESS

All NASS reports are available free of charge on the worldwide Internet. For access, connect to the Internet and go to the NASS Home Page at: <http://www.usda.gov/nass/>. Select "Today's Reports" or Publications and then Reports Calendar or Publications and then Search, by Title or Subject.

E-MAIL SUBSCRIPTION

All NASS reports are available by subscription free of charge direct to your e-mail address. Starting with the NASS Home Page at <http://www.usda.gov/nass/>, click on **Publications**, then click on the **Subscribe by E-mail** button which takes you to the page describing e-mail delivery of reports. Finally, click on **Go to the Subscription Page** and follow the instructions.

AUTOFAX ACCESS

NASSFax service is available for some reports from your fax machine. Please call 202-720-2000, using the handset attached to your fax. Respond to the voice prompts. Document 0411 is a list of available reports.

PRINTED REPORTS OR DATA PRODUCTS

CALL OUR TOLL-FREE ORDER DESK: 800-999-6779 (U.S. and Canada)
Other areas, please call 703-605-6220 FAX: 703-605-6900
(Visa, MasterCard, check, or money order acceptable for payment.)

ASSISTANCE

For **assistance** with general agricultural statistics or further information about NASS or its products or services, contact the **Agricultural Statistics Hotline** at **800-727-9540**, 7:30 a.m. to 4:00 p.m. ET, or e-mail: nass@nass.usda.gov.
