

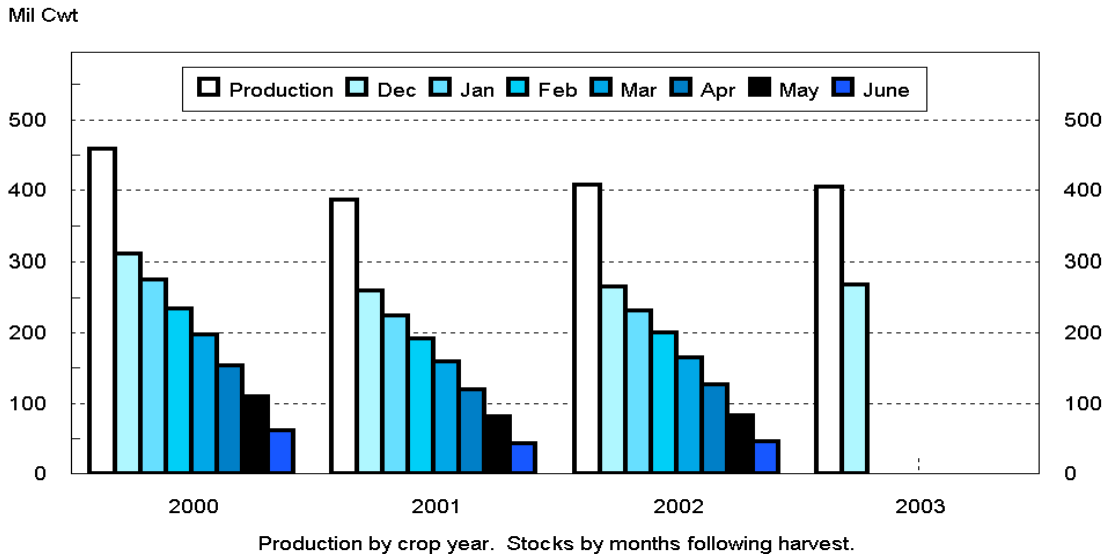
Released December 15, 2003, by the National Agricultural Statistics Service (NASS), Agricultural Statistics Board, U.S. Department of Agriculture. For information on "Potato Stocks" call Michael Miller at (202) 720-7235, office hours 7:30 a.m. to 4:00 p.m. ET.

Potato Stocks Up 1 Percent

The 15 major potato States held 267 million cwt of potatoes in storage December 1, 2003, up 1 percent from last year and 3 percent above 2001. Potatoes in storage account for 66 percent of the 2003 fall storage States' production, up 1 percentage point from last year. Disappearance of 137 million cwt of potatoes is down 4 percent from last year but 7 percent above 2001 movement. Shrink and loss, at 14.7 million cwt so far this season, is down 5 percent from last year but unchanged from the same date in 2001. Processors in the 9 major States used 70.7 million cwt of potatoes this season, down 8 percent from a year ago but 8 percent above two years ago. Dehydrating usage accounts for 14.3 million cwt of the total processing, down 9 percent from last year.

Please see page 17 for a tribute to Arvin Budge, NASS potato statistician for over 20 years.

Fall Potatoes: Production and Stocks 15 Storage States



Fall Potatoes: Production and Stocks, 15 Major States, 1994-2003

Crop Year	Production	Dec 1	Jan 1	Feb 1	Mar 1	Apr 1	May 1	Jun 1 ¹
	<i>1,000 Cwt</i>	<i>1,000 Cwt</i>	<i>1,000 Cwt</i>	<i>1,000 Cwt</i>	<i>1,000 Cwt</i>	<i>1,000 Cwt</i>	<i>1,000 Cwt</i>	<i>1,000 Cwt</i>
1994	410,839	273,290	238,560	202,470	169,570	129,825	87,600	
1995	394,785	256,710	223,550	189,360	156,020	115,855	75,870	
1996	443,704	295,100	261,320	226,080	189,210	147,635	103,210	
1997	413,513	278,830	246,550	212,562	175,870	134,190	92,840	
1998	423,170	280,910	246,230	209,640	173,650	131,220	87,895	50,270
1999	420,567	275,100	239,910	207,150	169,620	128,410	86,915	47,220
2000	458,827	310,300	275,270	234,260	197,670	153,520	109,160	61,240
2001	387,179	258,750	224,680	192,190	158,590	119,950	81,200	42,990
2002	407,821	264,585	231,690	199,320	165,310	125,870	82,940	45,980
2003	404,459	267,160						

¹ Data not available prior to 1998.

Potatoes: Quantity Used for Processing, 9 States, 2001-2003 ¹

State and Crop Year	Dec 1	Jan 1	Feb 1	Mar 1	Apr 1	May 1	Jun 1	Season
	<i>1,000 Cwt</i>	<i>1,000 Cwt</i>	<i>1,000 Cwt</i>	<i>1,000 Cwt</i>	<i>1,000 Cwt</i>	<i>1,000 Cwt</i>	<i>1,000 Cwt</i>	<i>1,000 Cwt</i>
ID & OR-Mal								
2001	20,940	27,330	33,620	40,860	47,710	54,150	61,200	73,390
2002	28,380	34,860	41,200	48,600	56,240	63,840	71,280	85,390
2003	24,310							
ME ²								
2001	1,975	2,440	3,110	3,700	4,285	4,775	5,515	7,195
2002	2,230	2,715	3,345	3,905	4,505	5,225	5,905	7,835
2003	1,585							
WA & OR-Oth								
2001	29,320	35,310	40,540	47,910	54,970	61,360	69,400	77,180
2002	33,680	39,490	44,190	51,920	58,710	64,300	71,480	79,110
2003	32,240							
Oth Sts ³								
2001	13,170	14,925	19,000	22,115	24,655	27,815	30,460	37,740
2002	12,190	14,865	17,865	20,740	23,580	26,000	29,075	36,705
2003	12,570							
Total								
2001	65,405	80,005	96,270	114,585	131,620	148,100	166,575	195,505
2002	76,480	91,930	106,600	125,165	143,035	159,365	177,740	209,040
2003	70,705							
Dehydrated ⁴								
2001 ⁵								38,581
2002	15,670	19,660	23,710	27,950	31,910	36,105	40,455	48,943
2003	14,250							

¹ Total quantity received and used for processing regardless of the State in which the potatoes were produced. Amount excludes quantities used for potato chips in ME, CO, MI, and WI.

² Includes Maine grown potatoes only.

³ MN, NV, ND, SD, and WI in 2001. CO, MN, NV, ND, and WI in 2002 and 2003.

⁴ Dehydrated products except starch and flour. Included in above totals. Includes CO, ID, NV, ND, OR, WA, and WI.

⁵ No monthly data available.

Fall Potatoes: Production and Stocks, 15 Major States, December 1, 2002-2003 ¹

State	Crop of 2002			Crop of 2003		
	Prod	Stocks Dec 1, 2002	% of Prod	Prod	Stocks Dec 1, 2003	% of Prod
	<i>1,000 Cwt</i>	<i>1,000 Cwt</i>	<i>Percent</i>	<i>1,000 Cwt</i>	<i>1,000 Cwt</i>	<i>Percent</i>
CA	4,264	3,300	77	3,444	2,700	78
CO	27,885	20,500	74	23,652	17,800	75
ID	133,385	92,000	69	123,180	86,000	70
ME	16,960	12,600	74	17,030	13,500	79
MI	13,878	7,900	57	15,015	8,400	56
MN	18,700	12,000	64	22,330	14,000	63
MT	3,224	3,100	96	3,392	3,200	94
NE	8,611	5,500	64	9,660	6,700	69
NY	5,500	2,400	44	6,510	3,000	46
ND	23,460	16,000	68	26,880	19,400	72
OH	903	85	9	1,290	260	20
OR	24,936	17,500	70	20,991	18,000	86
PA	2,590	1,400	54	3,915	2,200	56
WA	92,400	50,000	54	93,150	51,000	55
WI	31,125	20,300	65	34,020	21,000	62
15 States	407,821	264,585	65	404,459	267,160	66

¹ Stocks include processor holdings and most of the seed to plant following year's crop. Seed usage for all seasons in 2003 totaled 28.3 million cwt.

**Fall Potatoes: Stocks by Type as Percent of Total Stocks,
11 Selected States, December 1, 2002-2003**

State	Potato Types							
	Reds		Round Whites		Long Whites		Russets	
	2002	2003	2002	2003	2002	2003	2002	2003
	<i>Percent</i>	<i>Percent</i>	<i>Percent</i>	<i>Percent</i>	<i>Percent</i>	<i>Percent</i>	<i>Percent</i>	<i>Percent</i>
CO	4	5	1	2			95	93
ID	1	1			4	3	95	96
ME	4	4	47	46	2	2	47	48
MI	1	1	88	86			11	13
MN	12	14	7	4		1	81	81
NY	5	5	90	90			5	5
ND	15	14	16	23	6	7	63	56
OR	1	1	1	1			98	98
PA	3	4	97	96				
WA	1	1	1	1	6	6	92	92
WI	3	7	31	29			66	64
11 St Avg	3	4	11	12	3	3	83	81

Fall Potatoes: Area Planted and Harvested by State, 2001-2003

State	Area Planted			Area Harvested		
	2001	2002	2003	2001	2002	2003
	<i>1,000 Acres</i>	<i>1,000 Acres</i>	<i>1,000 Acres</i>	<i>1,000 Acres</i>	<i>1,000 Acres</i>	<i>1,000 Acres</i>
CA	3.2	8.2	8.4	3.2	8.2	8.4
CO	68.1	71.6	66.3	67.8	71.5	65.7
ID	350.0	375.0	360.0	348.0	373.0	358.0
10 SW Co	23.0	27.0	25.0	23.0	27.0	25.0
Other ID	327.0	348.0	335.0	325.0	346.0	333.0
IN	3.1	2.9	3.0	2.9	2.8	2.7
ME	62.0	64.0	66.0	62.0	64.0	65.5
MA	2.9	3.3	3.0	2.8	3.2	2.8
MI	46.0	46.5	46.0	45.0	45.5	45.5
MN	59.0	61.0	60.0	55.0	55.0	58.0
MT	10.5	10.5	10.7	10.3	10.4	10.6
NE	22.5	22.0	23.5	22.4	21.8	23.0
NV	6.5	7.6	8.3	6.5	7.6	8.0
NM	4.2	4.0	4.0	4.2	4.0	4.0
NY	23.5	22.5	22.2	23.3	22.0	21.7
ND	118.0	118.0	117.0	110.0	102.0	112.0
OH	4.4	4.3	4.5	4.3	4.2	4.3
OR	45.0	50.0	42.8	44.5	49.8	42.6
Malheur	9.0	8.0	5.8	9.0	8.0	5.8
Other OR	36.0	42.0	37.0	35.5	41.8	36.8
PA	14.0	15.0	14.5	13.5	14.0	13.5
RI	0.5	0.5	0.6	0.5	0.5	0.5
SD	2.8	1.1	1.0	2.7	1.1	1.0
UT	1.3	0.8	1.0	1.3	0.8	1.0
WA	160.0	165.0	163.0	160.0	165.0	162.0
WI	84.0	85.0	82.0	83.0	83.0	81.0
Total	1,091.5	1,138.8	1,107.8	1,073.2	1,109.4	1,091.8

Fall Potatoes: Yield and Production by State, 2001-2003

State	Yield			Production		
	2001	2002	2003	2001	2002	2003
	<i>Cwt</i>	<i>Cwt</i>	<i>Cwt</i>	<i>1,000 Cwt</i>	<i>1,000 Cwt</i>	<i>1,000 Cwt</i>
CA	445	520	410	1,424	4,264	3,444
CO	315	390	360	21,357	27,885	23,652
ID	345	358	344	120,200	133,385	123,180
10 SW Co	450	455	465	10,350	12,285	11,625
Other ID	338	350	335	109,850	121,100	111,555
IN	320	260	250	928	728	675
ME	265	265	260	16,430	16,960	17,030
MA	265	255	275	742	816	770
MI	310	305	330	13,950	13,878	15,015
MN	335	340	385	18,425	18,700	22,330
MT	320	310	320	3,296	3,224	3,392
NE	375	395	420	8,400	8,611	9,660
NV	360	350	415	2,340	2,660	3,320
NM	340	400	400	1,428	1,600	1,600
NY	255	250	300	5,942	5,500	6,510
ND	240	230	240	26,400	23,460	26,880
OH	255	215	300	1,097	903	1,290
OR	466	501	493	20,730	24,936	20,991
Malheur	410	400	415	3,690	3,200	2,407
Other OR	480	520	505	17,040	21,736	18,584
PA	235	185	290	3,173	2,590	3,915
RI	280	235	300	140	118	150
SD	240	300	340	648	330	340
UT	265	305	335	345	244	335
WA	590	560	575	94,400	92,400	93,150
WI	385	375	420	31,955	31,125	34,020
Total	367	373	377	393,750	414,317	411,649

**Fall Potatoes: Production, December 1 Stocks, and Farm Disposition,
15 Storage States and 23 Fall Season States, 2000-2003 Crop Years**

State	Crop Year	Production	Stocks Dec 1	Total Used For Fall Seed	Farm Disposition		
					Where Grown		Sold
					Seed, Feed, Home Use	Shrinkage and Loss	
		<i>1,000 Cwt</i>	<i>1,000 Cwt</i>	<i>1,000 Cwt</i>	<i>1,000 Cwt</i>	<i>1,000 Cwt</i>	<i>1,000 Cwt</i>
CA	2000	3,741	2,700	58	11	300	3,430
	2001	1,424	1,200	223	3	128	1,293
	2002	4,264	3,300	198	16	400	3,848
	2003	3,444	2,700				
CO	2000	27,972	20,300	1,771	1,485	3,847	22,640
	2001	21,357	15,600	1,790	1,465	1,887	18,005
	2002	27,885	20,500	1,724	1,460	2,845	23,580
	2003	23,652	17,800				
ID	2000	152,320	111,000	8,140	1,190	13,718	137,412
	2001	120,200	87,500	8,250	1,230	8,261	110,709
	2002	133,385	92,000	7,920	1,440	8,650	123,295
	2003	123,180	86,000				
ME	2000	17,920	14,100	1,302	315	1,490	16,115
	2001	16,430	12,200	1,344	301	849	15,280
	2002	16,960	12,600	1,386	310	790	15,860
	2003	17,030	13,500				
MI	2000	14,963	8,700	1,135	250	1,700	13,013
	2001	13,950	8,200	1,181	245	945	12,760
	2002	13,878	7,900	1,123	205	1,400	12,273
	2003	15,015	8,400				
MN	2000	21,240	14,200	1,140	130	1,700	19,410
	2001	18,425	12,000	1,159	190	1,700	16,535
	2002	18,700	12,000	1,098	130	1,400	17,170
	2003	22,330	14,000				
MT	2000	3,503	3,350	211	133	732	2,638
	2001	3,296	3,000	263	152	188	2,956
	2002	3,224	3,100	254	145	142	2,937
	2003	3,392	3,200				
NE	2000	10,127	7,500	542	182	730	9,215
	2001	8,400	4,850	570	153	720	7,527
	2002	8,611	5,500	611	149	612	7,850
	2003	9,660	6,700				
NY	2000	5,964	2,600	517	108	406	5,450
	2001	5,942	2,400	495	100	502	5,340
	2002	5,500	2,400	488	100	350	5,050
	2003	6,510	3,000				

--continued

**Fall Potatoes: Production, December 1 Stocks, and Farm Disposition,
15 Storage States and 23 Fall Season States, 2000-2003 Crop Years (continued)**

State	Crop Year	Production	Stocks Dec 1	Total Used For Fall Seed	Farm Disposition		
					Where Grown		Sold
					Seed, Feed, Home Use	Shrinkage and Loss	
		<i>1,000 Cwt</i>	<i>1,000 Cwt</i>	<i>1,000 Cwt</i>	<i>1,000 Cwt</i>	<i>1,000 Cwt</i>	<i>1,000 Cwt</i>
ND	2000	26,950	18,500	2,035	295	3,235	23,420
	2001	26,400	19,500	2,301	320	3,960	22,120
	2002	23,460	16,000	2,242	450	2,650	20,360
	2003	26,880	19,400				
OH	2000	1,134	350	102	2	35	1,097
	2001	1,097	300	90	3	36	1,058
	2002	903	85	89	2	12	889
	2003	1,290	260				
OR	2000	30,683	25,000	957	140	1,915	28,628
	2001	20,730	17,500	1,200	175	1,059	19,496
	2002	24,936	17,500	1,021	266	1,386	23,284
	2003	20,991	18,000				
PA	2000	3,510	2,000	252	44	165	3,301
	2001	3,173	1,800	285	59	120	2,994
	2002	2,590	1,400	276	38	78	2,474
	2003	3,915	2,200				
WA	2000	105,000	59,000	3,960	300	9,500	95,200
	2001	94,400	53,000	3,960	300	7,000	87,100
	2002	92,400	50,000	3,960	300	6,500	85,600
	2003	93,150	51,000				
WI	2000	33,800	21,000	1,700	264	1,949	31,587
	2001	31,955	19,700	1,615	278	1,947	29,730
	2002	31,125	20,300	1,848	265	1,775	29,085
	2003	34,020	21,000				
15 Sts	2000	458,827	310,300	23,822	4,849	41,422	412,556
	2001	387,179	258,750	24,726	4,974	29,302	352,903
	2002	407,821	264,585	24,238	5,276	28,990	373,555
	2003	404,459	267,160				
Fall Sts	2000	467,504		24,249	4,968	42,257	420,279
	2001	393,750		25,143	5,039	29,757	358,954
	2002	414,317		24,681	5,401	29,425	379,491
	2003	411,649					

NOTE: Stocks are defined as the quantity (whether sold or not) remaining in storage for all purposes and uses, including seed potatoes that are not yet moved, and shrinkage, waste, and other losses that occur after the date of each report. Sales of fall potatoes for all purposes for the past 5 years averaged 90.8 percent of the total fall production. Shrinkage, loss, and home use account for the remaining 9.2 percent.

**Potatoes: Production, Sold, Not Sold, and Kept for Seed,
United States, 1998-2003**

Crop Year	Fall Potatoes					Amount Used for Seed All Seasons Following year
	Production	Sold	Sold as % of Prod	Not Sold	Not Sold as % of Prod	
	<i>1,000 Cwt</i>	<i>1,000 Cwt</i>	<i>Percent</i>	<i>1,000 Cwt</i>	<i>Percent</i>	<i>1,000 Cwt</i>
1998	432,737	392,922	90.8	39,815	9.2	29,217
1999	429,847	390,210	90.8	39,637	9.2	29,709
2000	467,504	420,279	89.9	47,225	10.1	27,145
2001	393,750	358,954	91.2	34,796	8.8	28,639
2002	414,317	379,491	91.6	34,826	8.4	28,299
2003	411,649					

Potatoes: Shrinkage and Loss, 15 Fall Storage States, 2000-2003

Crop Year	To Dec 1	To Jan 1	To Feb 1	To Mar 1	To Apr 1	To May 1	Total Jun 1	Season
	<i>Million Cwt</i>	<i>Million Cwt</i>	<i>Million Cwt</i>	<i>Million Cwt</i>	<i>Million Cwt</i>	<i>Million Cwt</i>	<i>Million Cwt</i>	<i>Million Cwt</i>
2000	18.7	21.3	26.3	29.2	33.1	36.0	38.4	41.4
2001	14.7	17.3	19.7	21.7	23.5	25.1	26.7	29.3
2002	15.5	18.1	20.3	22.2	24.0	25.7	27.2	29.0
2003	14.7							

2003 Potato Objective Yield Survey

The National Agricultural Statistics Service conducted potato objective yield surveys in the 7 major fall producing States in 2003. These 7 States account for 82 percent of the fall potato production. Sample plots were located in potato fields that were selected on a random basis using a scientifically designed sampling procedure. Field workers recorded counts and measurements. Survey data from the objective yield counts are presented in the following two tables. They are provided to show information about the crop and trends in production.

Potatoes: Harvest Loss by Type, Seven Objective Yield States, 2002-2003 ^{1 2}

State	Crop Year	Reds	Whites	Russets	All Types
		<i>Cwt per Acre</i>	<i>Cwt per Acre</i>	<i>Cwt per Acre</i>	<i>Cwt per Acre</i>
ID	2002		18	26	26
	2003	18	30	27	27
ME	2002		16	15	15
	2003		15	22	17
MN	2002	14	12	32	24
	2003	17	22	29	24
ND	2002	27	25	38	30
	2003	10	24	26	24
OR	2002		14	21	17
	2003		12	19	17
WA	2002		29	26	26
	2003		23	34	31
WI	2002	8	12	13	12
	2003		18	14	16

¹ Potatoes left in the field at time of harvest. Based on counts in potato fields selected for postharvest samples.

² Missing data represents insufficient number of samples.

Potatoes: Number of Hills by Type, Seven Objective Yield States, 2002-2003 ¹

State	Crop Year	Reds		Whites		Russets	
		Number of Samples	Avg No. Hills per Acre	Number of Samples	Avg No. Hills per Acre	Number of Samples	Avg No. Hills per Acre
ID	2002			14	13,553	276	12,454
	2003	4	14,819	9	12,621	268	12,480
ME	2002	5	13,946	91	13,440	62	9,596
	2003	4	13,060	84	13,235	66	9,731
MN	2002	38	11,761	17	11,273	77	12,366
	2003	47	13,364	13	11,642	81	11,458
ND	2002	15	9,906	63	10,197	54	11,253
	2003	23	10,653	50	10,055	64	11,106
OR	2002	5	15,193	32	13,903	45	13,603
	2003			32	13,267	75	13,928
WA	2002	7	15,440	17	14,951	99	14,692
	2003	10	15,489	29	14,570	133	14,931
WI	2002	10	15,822	37	15,208	74	12,671
	2003	9	15,404	49	14,218	63	12,091

¹ Based on row measurements and counts in potato fields selected for objective yield samples.

Potato Size and Grade

Size and grade measurements came from potatoes harvested in the objective yield survey sample plots. Potatoes were harvested from six hills per sample randomly selected in each State using a scientifically designed sampling procedure. Potatoes were sent to laboratories for sizing and grading according to accepted U.S. fresh grading standards. The following tables contain percent measurements as they actually occurred.

Grading Categories of Potatoes ¹

Type and State	No. 1 2 Inch Minimum ²		No. 2 or Processing Usable 1 1/2 Inch Minimum ³		Cull ⁴		Total	
	2002	2003	2002	2003	2002	2003	2002	2003
	<i>Percent</i>	<i>Percent</i>	<i>Percent</i>	<i>Percent</i>	<i>Percent</i>	<i>Percent</i>	<i>Percent</i>	<i>Percent</i>
Round Red Potatoes								
MN	73.9	73.6	18.4	21.8	7.7	4.6	100.0	100.0
Round White Potatoes								
ME ⁵	82.8	77.4	10.8	10.7	6.4	11.9	100.0	100.0
MN ⁶	79.1		10.5		10.4		100.0	
ND	88.7	82.1	10.0	11.9	1.3	6.0	100.0	100.0
WI ⁷	67.2	80.4	14.3	19.4	18.5	0.2	100.0	100.0
Long Potatoes: (Russet and Shepody)								
ID ⁸	67.6	69.7	31.3	29.4	1.1	0.9	100.0	100.0
ME ⁵	76.0	61.2	17.0	21.7	7.0	17.1	100.0	100.0
MN	74.3	80.1	22.5	17.0	3.2	2.9	100.0	100.0
ND	78.3	73.9	18.9	18.1	2.8	8.0	100.0	100.0
OR	76.0	77.3	23.3	21.8	0.7	0.9	100.0	100.0
WA	72.0	79.1	26.5	19.2	1.5	1.7	100.0	100.0
WI ⁷	69.2	83.8	15.2	16.2	15.6		100.0	100.0

¹ Gross yield basis.

² Potatoes which meet the requirements for US #1, as stated in United States Standards for Grades of Potatoes, United States Department of Agriculture, Agriculture Marketing Service.

³ Potatoes which meet the requirements for US #2, as stated in United States Standards for Grades of Potatoes, United States Department of Agriculture, Agriculture Marketing Service.

⁴ Potatoes not meeting the requirements for US #1 or US #2, as stated in United States Standards for Grades of Potatoes, United States Department of Agriculture, Agriculture Marketing Service.

⁵ Percent of net yield - adjusted for field loss.

⁶ For 2003, data were not published due to insufficient number of samples.

⁷ For 2002, 1 7/8 in. minimum for No. 2's. In 2002, culls include potatoes less than 1 7/8 in. but greater than or equal to 1 1/2 in.

⁸ Russets only.

Round Potatoes: Size Categories ¹

Type State and Year	1 1/2	1 7/8	2	2 1/4	2 1/2	3 1/2	4 Inch and over	Total
	- 1 7/8	- 2	- 2 1/4	- 2 1/2	- 3 1/2	- 4		
	Inches							
	<i>Percent</i>	<i>Percent</i>	<i>Percent</i>	<i>Percent</i>	<i>Percent</i>	<i>Percent</i>	<i>Percent</i>	<i>Percent</i>
2002								
Red Potatoes								
MN	4.6	4.1	12.0	17.6	56.2	5.2	0.3	100.0
White Potatoes								
ME ²	3.9	4.3	14.4	21.5	49.9	4.4	1.6	100.0
MN	4.7	3.5	9.3	15.4	60.1	6.5	0.5	100.0
ND	3.8	3.0	9.0	14.2	63.1	6.3	0.6	100.0
WI	5.8	3.5	14.3	17.4	54.7	3.8	0.5	100.0
	<i>Percent</i>	<i>Percent</i>	<i>Percent</i>	<i>Percent</i>	<i>Percent</i>	<i>Percent</i>	<i>Percent</i>	<i>Percent</i>
2003								
Red Potatoes								
MN	7.8	6.0	15.5	21.9	47.4	1.4		100.0
White Potatoes								
ME ²	3.1	4.2	13.9	19.7	55.6	3.1	0.4	100.0
MN	3.9	2.1	8.1	11.9	63.9	7.7	2.4	100.0
ND	5.1	4.7	11.8	14.2	58.7	3.0	2.5	100.0
WI	4.0	2.9	10.6	17.4	61.7	3.1	0.3	100.0

¹ Gross yield basis.

² Percent of net yield - adjusted for field loss.

Maine Long Potatoes (Russet & Shepody): Size Categories ¹

Crop Year	1 1/2 - 1 7/8	1 7/8 - 2	2 in. or 4-6	6-8	8-10	10-12	12-14	14 and Over	Total
	Inches			Ounce					
	<i>Percent</i>	<i>Percent</i>	<i>Percent</i>	<i>Percent</i>	<i>Percent</i>	<i>Percent</i>	<i>Percent</i>	<i>Percent</i>	<i>Percent</i>
2002	6.8	6.3	36.2	20.9	11.3	7.4	4.3	6.8	100.0
2003	9.1	7.5	32.9	21.4	12.5	7.4	5.2	4.0	100.0

¹ Percent of net yield - adjusted for field loss.

Long Potatoes (Russet & Shepody): Size Categories ¹

State and Year	1 1/2 - 1 5/8	1 5/8 - 1 7/8	1 7/8 - 2	2 in. or 4-6	6	7	8	9	10	11	12	13	14 and Over	Total
	Inches				Ounce									
	<i>Pct</i>	<i>Pct</i>	<i>Pct</i>	<i>Pct</i>	<i>Pct</i>	<i>Pct</i>	<i>Pct</i>	<i>Pct</i>	<i>Pct</i>	<i>Pct</i>	<i>Pct</i>	<i>Pct</i>	<i>Pct</i>	<i>Pct</i>
2002														
ID ²	1.7	4.9	3.7	21.8	8.2	8.4	7.1	6.3	5.7	5.0	4.2	3.9	19.1	100.0
MN	1.8	9.3	4.0	24.8	12.4	11.0	7.8	6.9	5.6	4.3	2.8	3.3	6.0	100.0
ND	1.3	6.1	4.1	23.5	11.3	9.5	9.1	6.1	7.6	4.3	3.7	2.8	10.6	100.0
OR	1.0	3.2	2.4	18.3	8.8	8.6	7.3	8.1	6.4	5.3	5.2	4.5	20.9	100.0
WA	1.2	4.3	3.5	23.1	9.6	9.7	8.7	6.8	5.7	5.0	4.1	3.7	14.6	100.0
WI	3.6	8.1	7.0	32.9	11.9	9.0	7.7	5.2	4.3	3.3	2.5	1.4	3.1	100.0
	<i>Pct</i>	<i>Pct</i>	<i>Pct</i>	<i>Pct</i>	<i>Pct</i>	<i>Pct</i>	<i>Pct</i>	<i>Pct</i>	<i>Pct</i>	<i>Pct</i>	<i>Pct</i>	<i>Pct</i>	<i>Pct</i>	<i>Pct</i>
2003														
ID ²	2.2	8.6	6.2	28.8	9.7	8.8	6.5	5.9	4.6	3.9	3.5	2.4	8.9	100.0
MN	1.6	6.4	4.9	28.4	11.8	10.7	9.1	7.1	5.7	3.7	3.4	1.7	5.5	100.0
ND	1.1	6.3	3.8	23.5	11.1	10.9	8.5	7.7	6.0	4.8	4.3	2.4	9.6	100.0
OR	1.7	4.7	3.6	22.9	9.9	9.2	8.0	5.9	6.1	5.0	4.1	3.3	15.6	100.0
WA	1.0	3.9	3.8	21.7	8.5	8.5	8.4	7.7	5.8	5.6	4.6	3.7	16.8	100.0
WI	3.0	3.4	4.5	30.9	11.4	9.9	8.3	7.0	4.4	3.9	3.1	2.5	7.7	100.0

¹ Gross yield basis.

² Russets only.

**Fall Potatoes: Farm Marketings, Selected States,
2000-2002 Marketing Years**

State	Crop Year	Jul	Aug	Sep	Oct	Nov	Dec	Jan	Feb	Mar	Apr	May	Jun	Jul
		<i>Percent</i>	<i>Percent</i>	<i>Percent</i>	<i>Percent</i>	<i>Percent</i>	<i>Percent</i>	<i>Percent</i>	<i>Percent</i>	<i>Percent</i>	<i>Percent</i>	<i>Percent</i>	<i>Percent</i>	<i>Percent</i>
CA	2000				9	11	13	10	9	11	7	11	9	10
	2001					15	11	17	17	22	18			
	2002				11	11	11	10	10	10	13	8	9	7
CO	2000			5	8	10	10	11	8	11	11	12	9	5
	2001			5	10	11	12	12	9	11	10	11	7	2
	2002			4	9	10	10	11	9	11	11	10	7	8
ID	2000		5	9	10	9	6	7	6	9	9	13	8	9
	2001		3	12	13	8	6	7	9	10	10	10	6	6
	2002		4	8	11	10	7	8	8	10	11	10	7	6
ME	2000		2	8	8	7	9	9	12	12	15	10	5	3
	2001		1	9	10	9	9	12	11	11	12	8	5	3
	2002		2	7	11	9	8	10	9	10	15	10	5	4
MI	2000	3	7	8	12	12	12	11	12	11	7	4	1	
	2001	3	7	8	12	11	12	13	11	11	8	3	1	
	2002	4	7	11	12	13	8	6	8	12	13	6		
MN	2000	2	8	8	7	6	5	6	7	10	11	12	18	
	2001		10	9	7	7	6	7	9	10	10	9	8	8
	2002		9	9	9	7	8	7	9	7	9	12	8	6
NY	2000		2	26	18	11	12	8	8	10	5			
	2001		4	20	18	17	15	9	7	6	4			
	2002		8	17	16	14	11	14	10	7	3			
ND	2000		4	21	11	10	5	8	5	9	11	8	8	
	2001			18	10	12	7	8	7	7	14	11	6	
	2002		2	22	10	9	6	9	4	8	10	13	5	2
OR	2000	3	9	12	21	4	5	5	6	7	7	9	6	6
	2001		7	13	21	8	6	5	7	7	8	8	7	3
	2002		11	9	21	9	9	6	9	8	6	7	3	2
PA	2000		14	13	12	12	13	11	9	7	6	2	1	
	2001		17	16	15	12	12	10	8	7	2	1		
	2002		18	14	17	14	10	9	6	5	4	3		
WA	2000		16	14	25	7	4	6	5	5	5	5	5	3
	2001		11	13	25	7	6	5	7	7	6	7	5	1
	2002		17	12	19	9	5	5	7	6	6	7	6	1
WI	2000	1	7	15	14	11	8	8	9	10	10	5	2	
	2001	1	6	13	14	12	10	9	8	10	11	5	1	
	2002	1	7	12	12	12	9	9	8	12	10	6	2	

Reliability of December 1 Production and Stocks Estimates

The "Root Mean Square Error" for the December 1 stocks estimate is 2.4 percent. This means that chances are 2 out of 3 that the current estimate of 267 million cwt will not be above or below the final estimate by more than 2.4 percent or approximately 6.4 million cwt. Chances are 9 out of 10 (90 percent confidence level) that the difference will not exceed 4.2 percent or approximately 11.2 million cwt.

Also shown is the 10-year (1993-2002) record of the differences between the December 1 production and stocks estimates and the final estimates. Using stocks again as an example, changes between the December 1 estimate and the final estimate during the 10 years have averaged 4.0 million cwt. During the 10-year period, the December 1 stocks estimates have been below the final estimate 7 out of 10 years. Production estimates have been below the final estimate 6 years and above 4 years.

Reliability of December 1 Fall Potato Estimates

Estimate	Root Mean Square Error		Ten Year Record of Difference Between Dec 1 and Final Estimate					
	Percent	90% Confidence Level		Quantity			Number of Years	
		Percent	Quantity	Avg	Small	Large	Below Final	Above Final
			<i>Million Cwt</i>	<i>Million Cwt</i>	<i>Million Cwt</i>	<i>Million Cwt</i>		
Stocks	2.4	4.2	11.22	4.04	0.11	9.20	7	3
Production	1.7	2.9	11.94	4.78	0.40	11.30	6	4

Fall Potato Stocks: Preliminary and Final December 1 Stocks, United States, 1993-2003

Crop Year	Preliminary Stocks	% of Final	Final Stocks
	<i>1,000 Cwt</i>	<i>Percent</i>	<i>1,000 Cwt</i>
1993	240,370	96.4	249,410
1994	264,090	96.6	273,290
1995	252,030	98.2	256,710
1996	291,650	98.8	295,100
1997	274,250	98.4	278,830
1998	281,020	100.0	280,910
1999	274,870	99.9	275,100
2000	309,520	99.7	310,300
2001	266,520	103.0	258,750
2002	265,190	100.2	264,585
2003	267,160		

December Potato Stocks Up 1 Percent from Last Year

The 15 major potato storage States held 267 million cwt of potatoes on December 1, 2003, up 1 percent from last year and 3 percent above 2001. Storage accounted for 66 percent of the 2003 fall storage States' production, up 1 percentage point from last year. Stocks by type were 4 percent red, 12 percent round white, 3 percent long white (Shepody), and 81 percent russet, with more reds and round whites and fewer russets than a year ago.

Disappearance of 137 million cwt from the start of harvest to December 1, is down 4 percent from the same period last year but 7 percent above two years ago. Shrink and loss, at 14.7 million cwt, is down 5 percent from last year but unchanged from two years ago.

Processors used 70.7 million cwt of 2003 crop potatoes so far this season, down 8 percent from a year ago but 8 percent above two years ago. Idaho and Malheur processing decreased 14 percent while Washington and the rest of Oregon processed 4 percent less 2003 crop potatoes than a year ago. Dehydrators used 14.3 million cwt to date, down 9 percent from last year.

Western States held 179 million cwt of potatoes in storage on December 1, down 4 percent from last year but up 1 percent from two years ago. Idaho's potato stocks are down 7 percent from last year and Colorado's stocks are down 13 percent. California's stocks decreased 18 percent from last year but Oregon's stocks increased by 3 percent. Washington's sheds stored 2 percent more than last year and Montana's stocks are up 3 percent.

Central States accounted for 69.8 million cwt of potato stocks this December, up 13 percent from last year and 8 percent above two years ago. North Dakota's stocks gained 21 percent, Ohio jumped 206 percent, Michigan went up 6 percent and Wisconsin increased 3 percent from last year's level. Minnesota's stocks are 17 percent above last year and Nebraska's storages hold 22 percent more than in 2002.

Eastern States stored 18.7 million cwt of potatoes on December 1, up 14 percent from both of the last two years. Maine's stocks were up 7 percent, New York's gained 25 percent, and Pennsylvania stocks increased 57 percent.

Fall Potato Production Down less than 1 Percent from November

Production of fall potatoes for 2003 is forecast at 412 million cwt, down less than 1 percent from the November forecast and 1 percent below last year. Area harvested, at 1.09 million acres, is down 2 percent from last year but 2 percent above two years ago. The average yield is forecast at 377 cwt per acre, 1 cwt below last month but 4 cwt above last year. Production estimates are generally higher this year in the Central and Eastern States but lower in the West.

Western States production is forecast at 273 million cwt, down 6 percent from last year but 3 percent above 2001. Acreage harvested, at 660,300 acres, decreased 4 percent from last year. The average yield of 414 cwt per acre is down 7 cwt. Production decreased in 4 of the 9 Western States. California's yield is down due to hot weather and problems with seed quality. Colorado's production fell 15 percent as farmers reduced planted acreage to conserve underground water supplies following drought conditions during the past two years. Idaho's production decreased 8 percent from last year due to above normal summer temperatures which adversely affected tuber development. In Oregon, dry conditions during June and July reduced yield and tuber sizes. Utah has the largest percentage production increase, up 37 percent from last year. Production in Nevada and Montana increased 25 percent and 5 percent, respectively. Washington's production is 1 percent above last year, while New Mexico's production remains unchanged.

Central States production is forecast at 110 million cwt, up 13 percent from last year and 8 percent above 2001. Harvested area, estimated at 327,500 acres, is up 4 percent, while the average yield of 337 cwt per acre is up 27 cwt from a year ago. Production is above last year for all Central States except Indiana, where heavy rains during July caused ponding and flooding in many fields. Hot and dry weather in August contributed to a lower quality crop. Production increases range from 3 percent in South Dakota to 43 percent in Ohio. Minnesota is up 19 percent, North Dakota increased 15 percent, Wisconsin rose 9 percent, Michigan went up 8 percent, and Nebraska increased 12 percent.

Eastern States production is forecast at 28.4 million cwt, up 9 percent from last year and 7 percent above two years ago. Area for harvest totaled 104,000 acres, virtually unchanged from last year. The average yield rose to 273 cwt per acre, 22 cwt above last season. Production increases occurred in 4 of the 5 Eastern States. Pennsylvania holds the largest increase, 51 percent higher, due to drought conditions in 2002 which made yields lower than usual. Rhode Island production is up 27 percent, New York rose 18 percent, and Maine increased less than 1 percent. Massachusetts shows a decrease of 6 percent from last year's production.

*Arvin Budge, NASS potato statistician for over 20 years, passed away on July 18, 2003.
The tribute below was written by one of his colleagues.*



A Tribute to Arvin Budge

*As Crops Branch prepares this issue of Potato Stocks in December
We take the opportunity to give thanks, show appreciation, and remember,*

*For as another holiday season is about to pass us by
We pay tribute to a dedicated colleague we lost this past July,*

*Though our colleague was as committed to his job as any employee can be
He was highly recognized for the sincere devotion he felt towards his family,*

*He spoke with pride as he told tales of refereeing basketball hoops
As well as his adventures of camping and canoeing with his Boy Scout troops,*

*His knowledge of the subject matter was obvious, anyone could see
For Arvin was well known and respected throughout the potato industry,*

*From his determination and strength he worked the very last day of his life
And he continues to be missed by his children, friends, and Nola his wife,*

*His passing was unexpected as he was suddenly called home
NASS has lost a valuable commodity in this statistician alone.*

The next "*Potato Stocks*" report will be released at 3 p.m. ET on January 15, 2004.

The United States Department of Agriculture (USDA) prohibits discrimination in all its programs on the basis of race, color, national origin, gender, religion, age, disability, political beliefs, sexual orientation, and marital or family status. (Not all prohibited bases apply to all programs.) Persons with disabilities who require alternative means for communication of program information (braille, large print, audiotape, etc.) should contact the USDA's TARGET Center at 202-720-2600 (voice and TDD).

To file a complaint of discrimination, write USDA, Director, Office of Civil Rights, Room 326-W, Whitten Building, 1400 Independence Avenue, SW, Washington, D.C., 20250-9410, or call 202-720-5964 (voice or TDD). USDA is an equal opportunity provider and employer.

ACCESS TO REPORTS!!

For your convenience, there are several ways to obtain NASS reports, data products, and services:

INTERNET ACCESS

All NASS reports are available free of charge on the worldwide Internet. For access, connect to the Internet and go to the NASS Home Page at: <http://www.usda.gov/nass/>. Select "Today's Reports" or Publications and then Reports Calendar or Publications and then Search, by Title or Subject.

E-MAIL SUBSCRIPTION

All NASS reports are available by subscription free of charge direct to your e-mail address. Starting with the NASS Home Page at <http://www.usda.gov/nass/>, click on **Publications**, then click on the **Subscribe by E-mail** button which takes you to the page describing e-mail delivery of reports. Finally, click on **Go to the Subscription Page** and follow the instructions.

PRINTED REPORTS OR DATA PRODUCTS

CALL OUR TOLL-FREE ORDER DESK: 800-999-6779 (U.S. and Canada)
Other areas, please call 703-605-6220 FAX: 703-605-6900
(Visa, MasterCard, check, or money order acceptable for payment.)

ASSISTANCE

For **assistance** with general agricultural statistics or further information about NASS or its products or services, contact the **Agricultural Statistics Hotline** at **800-727-9540**, 7:30 a.m. to 4:00 p.m. ET, or e-mail: nass@nass.usda.gov.
