

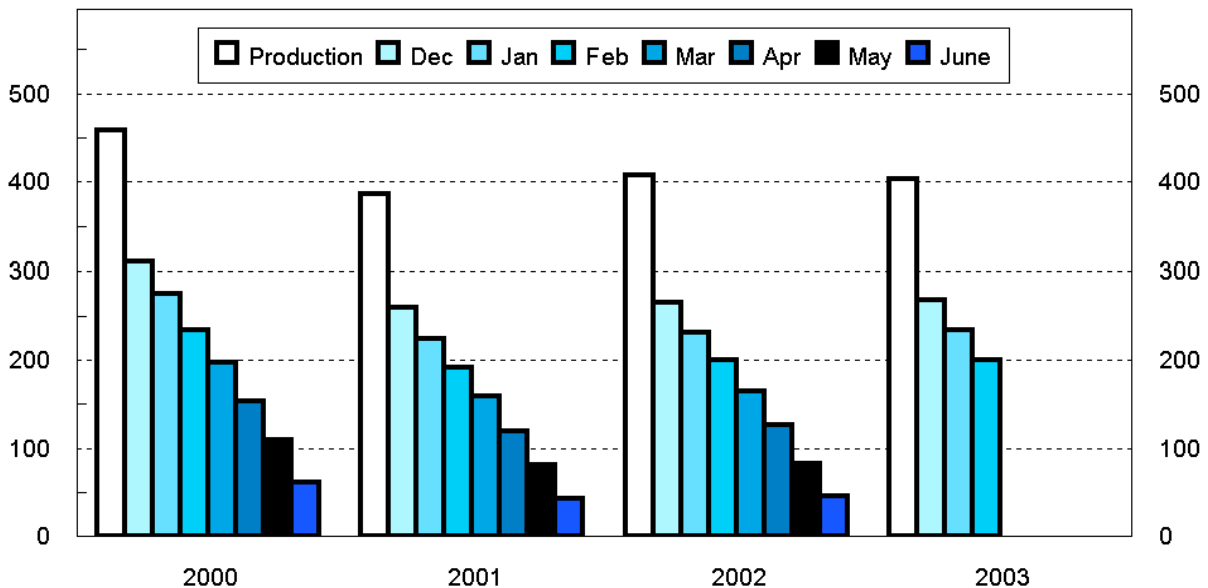
Released February 13, 2004, by the National Agricultural Statistics Service (NASS), Agricultural Statistics Board, U.S. Department of Agriculture. For information on "Potato Stocks" call Cathy Scherrer at (202) 720-4285, office hours 7:30 a.m. to 4:00 p.m. ET.

## Potato Stocks Up 1 Percent

The 15 major potato States held 201 million cwt of potatoes in storage February 1, 2004, up 1 percent from last year and 4 percent above 2002. Potatoes in storage account for 50 percent of the 2003 fall storage States' production, up 1 percentage point from last year. Stocks by type show more reds and round whites and fewer russets than a year ago. Disappearance of 203 million cwt of potatoes is down 2 percent from last year but 4 percent above two years ago. Shrink and loss, at 20.6 million cwt so far this season, is up 1 percent from last year and 5 percent above the same date in 2002. Processors in the 9 major States used 101 million cwt of potatoes this season, down 5 percent from a year ago but 5 percent above two years ago. Dehydrating usage accounts for 22.1 million cwt of the total processing, down 7 percent from last year.

## Fall Potatoes: Production and Stocks 15 Storage States

Mil Cwt



Production by crop year. Stocks by months following harvest.

**Fall Potatoes: Production and Stocks, 15 Major States, 1994-2003**

Crop Year	Production	Dec 1	Jan 1	Feb 1	Mar 1	Apr 1	May 1	Jun 1 <sup>1</sup>
	<i>1,000 Cwt</i>	<i>1,000 Cwt</i>	<i>1,000 Cwt</i>	<i>1,000 Cwt</i>	<i>1,000 Cwt</i>	<i>1,000 Cwt</i>	<i>1,000 Cwt</i>	<i>1,000 Cwt</i>
1994	410,839	273,290	238,560	202,470	169,570	129,825	87,600	
1995	394,785	256,710	223,550	189,360	156,020	115,855	75,870	
1996	443,704	295,100	261,320	226,080	189,210	147,635	103,210	
1997	413,513	278,830	246,550	212,562	175,870	134,190	92,840	
1998	423,170	280,910	246,230	209,640	173,650	131,220	87,895	50,270
1999	420,567	275,100	239,910	207,150	169,620	128,410	86,915	47,220
2000	458,827	310,300	275,270	234,260	197,670	153,520	109,160	61,240
2001	387,179	258,750	224,680	192,190	158,590	119,950	81,200	42,990
2002	407,821	264,585	231,690	199,320	165,310	125,870	82,940	45,980
2003	403,946	267,860	233,880	200,530				

<sup>1</sup> Data not available prior to 1998.

**Potatoes: Quantity Used for Processing, 9 States, 2001-2003 <sup>1</sup>**

State and Crop Year	Dec 1	Jan 1	Feb 1	Mar 1	Apr 1	May 1	Jun 1	Season
	<i>1,000 Cwt</i>	<i>1,000 Cwt</i>	<i>1,000 Cwt</i>	<i>1,000 Cwt</i>	<i>1,000 Cwt</i>	<i>1,000 Cwt</i>	<i>1,000 Cwt</i>	<i>1,000 Cwt</i>
<b>ID &amp; OR-Mal</b>								
2001	20,940	27,330	33,620	40,860	47,710	54,150	61,200	73,390
2002	28,380	34,860	41,200	48,600	56,240	63,840	71,280	85,390
2003	24,310	30,730	36,260					
<b>ME <sup>2</sup></b>								
2001	1,975	2,440	3,110	3,700	4,285	4,775	5,515	7,195
2002	2,230	2,715	3,345	3,905	4,505	5,225	5,905	7,835
2003	1,590	2,095	2,725					
<b>WA &amp; OR-Oth</b>								
2001	29,320	35,310	40,540	47,910	54,970	61,360	69,400	77,180
2002	33,680	39,490	44,190	51,920	58,710	64,300	71,480	79,110
2003	32,670	38,520	43,600					
<b>Oth Sts <sup>3</sup></b>								
2001	13,170	14,925	19,000	22,115	24,655	27,815	30,460	37,740
2002	12,190	14,865	17,865	20,740	23,580	26,000	29,075	36,705
2003 <sup>4</sup>	12,570	15,410	18,760					
<b>Total</b>								
2001	65,405	80,005	96,270	114,585	131,620	148,100	166,575	195,505
2002	76,480	91,930	106,600	125,165	143,035	159,365	177,740	209,040
2003 <sup>4</sup>	71,140	86,755	101,345					
<b>Dehydrated <sup>5</sup></b>								
2001 <sup>6</sup>								38,581
2002	15,670	19,660	23,710	27,950	31,910	36,105	40,455	48,943
2003 <sup>4</sup>	14,250	18,370	22,050					

<sup>1</sup> Total quantity received and used for processing regardless of the State in which the potatoes were produced. Amount excludes quantities used for potato chips in ME, CO, MI, and WI.

<sup>2</sup> Includes Maine grown potatoes only.

<sup>3</sup> MN, NV, ND, SD, and WI in 2001. CO, MN, NV, ND, and WI in 2002 and 2003.

<sup>4</sup> January revised.

<sup>5</sup> Dehydrated products except starch and flour. Included in above totals. Includes CO, ID, NV, ND, OR, WA, and WI.

<sup>6</sup> No monthly data available.

**Fall Potatoes: Production and Stocks on February 1, 2003-2004 <sup>1</sup>**

State	Crop of 2002			Crop of 2003		
	Prod	Stocks Feb 1, 2003	% of Prod	Prod	Stocks Feb 1, 2004	% of Prod
	<i>1,000 Cwt</i>	<i>1,000 Cwt</i>	<i>Percent</i>	<i>1,000 Cwt</i>	<i>1,000 Cwt</i>	<i>Percent</i>
CA	4,264	2,400	56	3,444	2,000	58
CO	27,885	15,300	55	23,652	12,200	52
ID	133,385	72,500	54	123,180	67,000	54
ME	16,960	9,500	56	17,030	10,500	62
MI	13,878	5,600	40	15,015	5,600	37
MN	18,700	9,100	49	22,330	11,100	50
MT	3,224	2,900	90	3,339	3,000	90
NE	8,611	3,700	43	9,860	4,500	46
NY	5,500	1,100	20	6,510	2,400	37
ND	23,460	11,600	49	27,440	15,000	55
OH	903	20	2	1,290	130	10
OR	24,936	12,500	50	20,991	13,500	64
PA	2,590	900	35	3,915	1,100	28
WA	92,400	38,500	42	93,150	38,000	41
WI	31,125	13,700	44	32,800	14,500	44
15 States	407,821	199,320	49	403,946	200,530	50

<sup>1</sup> Stocks include processor holdings and most of the seed to plant following year's crop. Seed usage for all seasons in 2003 totaled 28.3 million cwt.

**Fall Potatoes: Stocks by Type as Percent of Total Stocks,  
11 Selected States, February 1, 2003-2004**

State	Potato Types							
	Reds		Round Whites		Long Whites		Russets	
	2003	2004	2003	2004	2003	2004	2003	2004
	<i>Percent</i>	<i>Percent</i>	<i>Percent</i>	<i>Percent</i>	<i>Percent</i>	<i>Percent</i>	<i>Percent</i>	<i>Percent</i>
CO	4	5	1	2			95	93
ID	1	1			4	3	95	96
ME	5	4	44	46	1	1	50	49
MI			98	90			2	10
MN	11	11	5	4			84	85
NY	5	5	90	90			5	5
ND	12	13	15	28	3	4	70	55
OR		2	1	1	1		98	97
PA	3	4	97	96				
WA	1	1			3	3	96	96
WI	3	2	24	32			73	66
11 St Avg	3	4	9	14	2	2	86	80

**Fall Potatoes: Production, February 1 Stocks, and Farm Disposition,  
15 Storage States and 23 Fall Season States, 2000-2003 Crop Years**

State	Crop Year	Production	Stocks Feb 1	Total Used For Fall Seed	Farm Disposition		
					Where Grown		Sold
					Seed, Feed, Home Use	Shrinkage and Loss	
		<i>1,000 Cwt</i>	<i>1,000 Cwt</i>	<i>1,000 Cwt</i>	<i>1,000 Cwt</i>	<i>1,000 Cwt</i>	<i>1,000 Cwt</i>
CA	2000	3,741	1,700	58	11	300	3,430
	2001	1,424	800	223	3	128	1,293
	2002	4,264	2,400	198	16	400	3,848
	2003	3,444	2,000				
CO	2000	27,972	15,100	1,771	1,485	3,847	22,640
	2001	21,357	11,000	1,790	1,465	1,887	18,005
	2002	27,885	15,300	1,724	1,460	2,845	23,580
	2003	23,652	12,200				
ID	2000	152,320	87,500	8,140	1,190	13,718	137,412
	2001	120,200	68,000	8,250	1,230	8,261	110,709
	2002	133,385	72,500	7,920	1,440	8,650	123,295
	2003	123,180	67,000				
ME	2000	17,920	10,900	1,302	315	1,490	16,115
	2001	16,430	8,900	1,344	301	849	15,280
	2002	16,960	9,500	1,386	310	790	15,860
	2003	17,030	10,500				
MI	2000	14,963	5,200	1,135	250	1,700	13,013
	2001	13,950	4,800	1,181	245	945	12,760
	2002	13,878	5,600	1,123	205	1,400	12,273
	2003	15,015	5,600				
MN	2000	21,240	11,600	1,140	130	1,700	19,410
	2001	18,425	9,500	1,159	190	1,700	16,535
	2002	18,700	9,100	1,098	130	1,400	17,170
	2003	22,330	11,100				
MT	2000	3,503	3,000	211	133	732	2,638
	2001	3,296	2,630	263	152	188	2,956
	2002	3,224	2,900	254	145	142	2,937
	2003	3,339	3,000				
NE	2000	10,127	4,600	542	182	730	9,215
	2001	8,400	3,200	570	153	720	7,527
	2002	8,611	3,700	611	149	612	7,850
	2003	9,860	4,500				
NY	2000	5,964	1,400	517	108	406	5,450
	2001	5,942	1,000	495	100	502	5,340
	2002	5,500	1,100	488	100	350	5,050
	2003	6,510	2,400				

--continued

**Fall Potatoes: Production, February 1 Stocks, and Farm Disposition,  
15 Storage States and 23 Fall Season States, 2000-2003 Crop Years (continued)**

State	Crop Year	Production	Stocks Feb 1	Total Used For Fall Seed	Farm Disposition		
					Where Grown		Sold
					Seed, Feed, Home Use	Shrinkage and Loss	
		<i>1,000 Cwt</i>	<i>1,000 Cwt</i>	<i>1,000 Cwt</i>	<i>1,000 Cwt</i>	<i>1,000 Cwt</i>	<i>1,000 Cwt</i>
ND	2000	26,950	13,700	2,035	295	3,235	23,420
	2001	26,400	14,500	2,301	320	3,960	22,120
	2002	23,460	11,600	2,242	450	2,650	20,360
	2003	27,440	15,000				
OH	2000	1,134	60	102	2	35	1,097
	2001	1,097	60	90	3	36	1,058
	2002	903	20	89	2	12	889
	2003	1,290	130				
OR	2000	30,683	20,000	957	140	1,915	28,628
	2001	20,730	14,000	1,200	175	1,059	19,496
	2002	24,936	12,500	1,021	266	1,386	23,284
	2003	20,991	13,500				
PA	2000	3,510	1,100	252	44	165	3,301
	2001	3,173	1,000	285	59	120	2,994
	2002	2,590	900	276	38	78	2,474
	2003	3,915	1,100				
WA	2000	105,000	44,500	3,960	300	9,500	95,200
	2001	94,400	40,000	3,960	300	7,000	87,100
	2002	92,400	38,500	3,960	300	6,500	85,600
	2003	93,150	38,000				
WI	2000	33,800	13,900	1,700	264	1,949	31,587
	2001	31,955	12,800	1,615	278	1,947	29,730
	2002	31,125	13,700	1,848	265	1,775	29,085
	2003	32,800	14,500				
15 Sts	2000	458,827	234,260	23,822	4,849	41,422	412,556
	2001	387,179	192,190	24,726	4,974	29,302	352,903
	2002	407,821	199,320	24,238	5,276	28,990	373,555
	2003	403,946	200,530				
Fall Sts	2000	467,504		24,249	4,968	42,257	420,279
	2001	393,750		25,143	5,039	29,757	358,954
	2002	414,317		24,681	5,401	29,425	379,491
	2003	411,386					

**Fall Potatoes: Farm Marketings, Selected States,  
2000-2002 Marketing Years**

State	Crop Year	Jul	Aug	Sep	Oct	Nov	Dec	Jan	Feb	Mar	Apr	May	Jun	Jul
		<i>Percent</i>	<i>Percent</i>	<i>Percent</i>	<i>Percent</i>	<i>Percent</i>	<i>Percent</i>	<i>Percent</i>	<i>Percent</i>	<i>Percent</i>	<i>Percent</i>	<i>Percent</i>	<i>Percent</i>	<i>Percent</i>
CA	2000				9	11	13	10	9	11	7	11	9	10
	2001					15	11	17	17	22	18			
	2002				11	11	11	10	10	10	13	8	9	7
CO	2000			5	8	10	10	11	8	11	11	12	9	5
	2001			5	10	11	12	12	9	11	10	11	7	2
	2002			4	9	10	10	11	9	11	11	10	7	8
ID	2000		5	9	10	9	6	7	6	9	9	13	8	9
	2001		3	12	13	8	6	7	9	10	10	10	6	6
	2002		4	8	11	10	7	8	8	10	11	10	7	6
ME	2000		2	8	8	7	9	9	12	12	15	10	5	3
	2001		1	9	10	9	9	12	11	11	12	8	5	3
	2002		2	7	11	9	8	10	9	10	15	10	5	4
MI	2000	3	7	8	12	12	12	11	12	11	7	4	1	
	2001	3	7	8	12	11	12	13	11	11	8	3	1	
	2002	4	7	11	12	13	8	6	8	12	13	6		
MN	2000	2	8	8	7	6	5	6	7	10	11	12	18	
	2001		10	9	7	7	6	7	9	10	10	9	8	8
	2002		9	9	9	7	8	7	9	7	9	12	8	6
NY	2000		2	26	18	11	12	8	8	10	5			
	2001		4	20	18	17	15	9	7	6	4			
	2002		8	17	16	14	11	14	10	7	3			
ND	2000		4	21	11	10	5	8	5	9	11	8	8	
	2001			18	10	12	7	8	7	7	14	11	6	
	2002		2	22	10	9	6	9	4	8	10	13	5	2
OR	2000	3	9	12	21	4	5	5	6	7	7	9	6	6
	2001		7	13	21	8	6	5	7	7	8	8	7	3
	2002		11	9	21	9	9	6	9	8	6	7	3	2
PA	2000		14	13	12	12	13	11	9	7	6	2	1	
	2001		17	16	15	12	12	10	8	7	2	1		
	2002		18	14	17	14	10	9	6	5	4	3		
WA	2000		16	14	25	7	4	6	5	5	5	5	5	3
	2001		11	13	25	7	6	5	7	7	6	7	5	1
	2002		17	12	19	9	5	5	7	6	6	7	6	1
WI	2000	1	7	15	14	11	8	8	9	10	10	5	2	
	2001	1	6	13	14	12	10	9	8	10	11	5	1	
	2002	1	7	12	12	12	9	9	8	12	10	6	2	

## February Potato Stocks Up 1 Percent from Last Year

The 15 major potato States held 201 million cwt of potatoes in storage February 1, 2004, up 1 percent from last year and 4 percent above 2002. Potatoes in storage account for 50 percent of the 2003 fall storage States' production, up 1 percentage point from last year. Stocks by type were 4 percent red, 14 percent round white, 2 percent long white (Shepody), and 80 percent russet, with more reds and round whites and fewer russets than a year ago.

Disappearance of 203 million cwt from the start of harvest to February 1, is down 2 percent from the same period last year but 4 percent above two years ago. Shrink and loss, at 20.6 million cwt, is up 1 percent from last year and 5 percent above two years ago.

Processors used 101 million cwt of 2003 crop potatoes so far this season, down 5 percent from a year ago but 5 percent above two years ago. January usage of 14.6 million cwt is 1 percent below last year and 10 percent below two years ago. Dehydrators used 22.1 million cwt to date, down 7 percent from last year.

Western States held 136 million cwt of potatoes in storage on February 1, down 6 percent from last year and 1 percent below two years ago. Idaho's potato stocks are down 8 percent from last year, Washington decreased 1 percent, Colorado's storages held 20 percent less, and California lost 17 percent. Oregon's sheds stored 8 percent more than last year and Montana increased 3 percent.

Central States accounted for 50.8 million cwt of potato stocks this February, up 16 percent from last year and 13 percent above two years ago. North Dakota's stocks increased 29 percent from last year's level, Wisconsin gained 6 percent, and Minnesota went up 22 percent. Nebraska's stocks are 22 percent more than last year, and Ohio jumped 550 percent. Michigan's storages hold the same amount as last year at this time.

Eastern States stored 14.0 million cwt of potatoes on February 1, up 22 percent from last year and 28 percent above two years ago. Maine's stocks are up 11 percent, New York's gained 118 percent, and Pennsylvania stocks increased 22 percent.

**Potatoes: Shrinkage and Loss, 15 Fall Storage States, 2000-2003**

Crop Year	To Dec 1	To Jan 1	To Feb 1	To Mar 1	To Apr 1	To May 1	Total Jun 1	Season
	<i>Million Cwt</i>	<i>Million Cwt</i>	<i>Million Cwt</i>	<i>Million Cwt</i>	<i>Million Cwt</i>	<i>Million Cwt</i>	<i>Million Cwt</i>	<i>Million Cwt</i>
2000	18.7	21.3	26.3	29.2	33.1	36.0	38.4	41.4
2001	14.7	17.3	19.7	21.7	23.5	25.1	26.7	29.3
2002	15.5	18.1	20.3	22.2	24.0	25.7	27.2	29.0
2003	14.9	17.4	20.6					

## Reliability of February 1 Stocks Estimates

To assist users in evaluating the reliability of the February 1 stocks estimate, the "Root Mean Square Error," a statistical measure based on past performance, is computed. The deviation between the February 1 stocks estimate and the final estimate is expressed as a percentage of the final estimate. The average of squared percentage deviations for the latest 20-year period is computed. The square root of the average becomes statistically the "Root Mean Square Error." Probability statements can be made concerning expected differences in the current estimate relative to the final end-of-season estimate, assuming that factors affecting this year's estimate are not different from those influencing recent years.

The "Root Mean Square Error" for the February 1 stocks estimate is 3.1 percent. This means that chances are 2 out of 3 that the current estimate of 201 million cwt will not be above or below the final estimate by more than 3.1 percent or approximately 6.2 million cwt. Chances are 9 out of 10 (90 percent confidence level) that the difference will not exceed 5.4 percent or approximately 10.8 million cwt.

The 10-year (1993-2002) record of differences between the February 1 stocks estimates and the final estimates averaged 4.6 million cwt, ranging from 9.6 million cwt above the final to 7.4 million cwt below the final. During the 10-year period, the February 1 estimate has been below the final estimate 7 years and above 3 years.

### Fall Potato Stocks: Preliminary and Final February 1 Stocks, United States, 1993-2003

Crop Year	Preliminary Stocks <i>1,000 Cwt</i>	% of Final <i>Percent</i>	Final Stocks <i>1,000 Cwt</i>
1993	178,070	96.0	185,490
1994	196,005	96.8	202,470
1995	184,755	97.6	189,360
1996	220,465	97.5	226,080
1997	205,850	96.8	212,562
1998	211,100	100.7	209,640
1999	205,780	99.3	207,150
2000	235,050	100.3	234,260
2001	201,750	105.0	192,190
2002	197,470	99.1	199,320
2003	200,530		

NOTE: Stocks are defined as the quantity (whether sold or not) remaining in storage for all purposes and uses, including seed potatoes that are not yet moved, and shrinkage, waste, and other losses that occur after the date of each report. Sales of fall potatoes for all purposes for the past 5 years averaged 90.8 percent of the total fall production. Shrinkage, loss, and home use account for the remaining 9.2 percent.

### Potatoes: Production, Sold, Not Sold, and Kept for Seed, United States, 1998-2003

Crop Year	Fall Potatoes					Amount Used for Seed All Seasons Following year <i>1,000 Cwt</i>
	Production <i>1,000 Cwt</i>	Sold <i>1,000 Cwt</i>	Sold as % of Prod <i>Percent</i>	Not Sold <i>1,000 Cwt</i>	Not Sold as % of Prod <i>Percent</i>	
1998	432,737	392,922	90.8	39,815	9.2	29,217
1999	429,847	390,210	90.8	39,637	9.2	29,709
2000	467,504	420,279	89.9	47,225	10.1	27,145
2001	393,750	358,954	91.2	34,796	8.8	28,639
2002	414,317	379,491	91.6	34,826	8.4	28,299
2003	411,386					



The next "*Potato Stocks*" report will be released at 3 p.m. ET on March 15, 2004.

The United States Department of Agriculture (USDA) prohibits discrimination in all its programs on the basis of race, color, national origin, gender, religion, age, disability, political beliefs, sexual orientation, and marital or family status. (Not all prohibited bases apply to all programs.) Persons with disabilities who require alternative means for communication of program information (braille, large print, audiotape, etc.) should contact the USDA's TARGET Center at 202-720-2600 (voice and TDD).

To file a complaint of discrimination, write USDA, Director, Office of Civil Rights, Room 326-W, Whitten Building, 1400 Independence Avenue, SW, Washington, D.C., 20250-9410, or call 202-720-5964 (voice or TDD). USDA is an equal opportunity provider and employer.

## ACCESS TO REPORTS!!

---

For your convenience, there are several ways to obtain NASS reports, data products, and services:

### INTERNET ACCESS

All NASS reports are available free of charge on the worldwide Internet. For access, connect to the Internet and go to the NASS Home Page at: [www.usda.gov/nass/](http://www.usda.gov/nass/). Select "Today's Reports" or Publications and then Reports Calendar or Publications and then Search, by Title or Subject.

### E-MAIL SUBSCRIPTION

All NASS reports are available by subscription free of charge direct to your e-mail address. Starting with the NASS Home Page at [www.usda.gov/nass/](http://www.usda.gov/nass/), click on **Publications**, then click on the **Subscribe by E-mail** button which takes you to the page describing e-mail delivery of reports. Finally, click on **Go to the Subscription Page** and follow the instructions.

-----

### PRINTED REPORTS OR DATA PRODUCTS

**CALL OUR TOLL-FREE ORDER DESK: 800-999-6779 (U.S. and Canada)**  
**Other areas, please call 703-605-6220      FAX: 703-605-6900**  
**(Visa, MasterCard, check, or money order acceptable for payment.)**

-----

### ASSISTANCE

For **assistance** with general agricultural statistics or further information about NASS or its products or services, contact the **Agricultural Statistics Hotline** at **800-727-9540**, 7:30 a.m. to 4:00 p.m. ET, or e-mail: [nass@nass.usda.gov](mailto:nass@nass.usda.gov).

---

# Ensuring a Healthy Food Supply



**February 19-20, 2004**  
**Crystal Gateway**  
**Marriott Hotel**  
**Arlington, Virginia**

Shoppers demand affordable food that's safe, healthy and right for their family's diet. Foreign consumers, too, have high standards for American-grown foods. Meeting their expectations poses challenges for farmers and ranchers, the food industry and government.

At Agricultural Outlook Forum 2004, you will hear about the latest developments in food safety, health concerns and innovative products. The program also features in-depth analysis of 2004 commodity planting, trade and market prospects. And you will receive new 10-year commodity projections from USDA.

Networking opportunities abound at this popular event. Register online today. For program updates, send your name and e-mail address to [agforum@oce.usda.gov](mailto:agforum@oce.usda.gov).

[www.usda.gov/oce](http://www.usda.gov/oce)    [agforum@oce.usda.gov](mailto:agforum@oce.usda.gov)    (877) 891-2208 toll free