

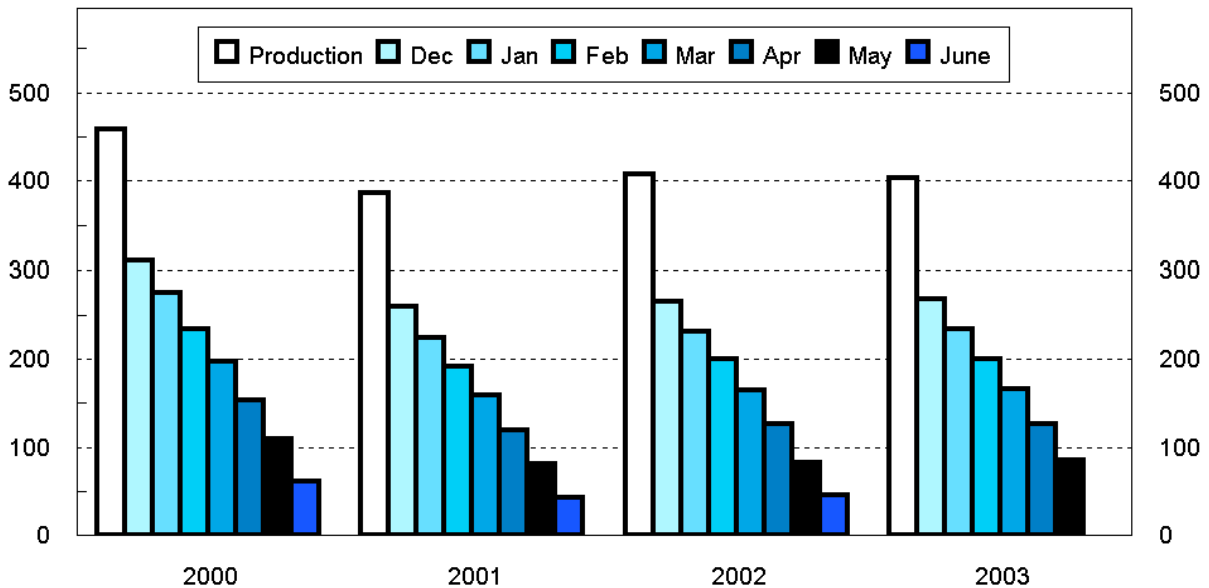
Released May 14, 2004, by the National Agricultural Statistics Service (NASS), Agricultural Statistics Board, U.S. Department of Agriculture. For information on *Potato Stocks* call Cathy Scherrer at (202) 720-4285, office hours 7:30 a.m. to 4:00 p.m. ET.

## Potato Stocks Up 2 Percent

The 15 major potato States held 84.8 million cwt of potatoes in storage May 1, 2004, up 2 percent from last year and 4 percent above 2002. Potatoes in storage account for 21 percent of the 2003 fall storage States' production, 1 percentage point above last year. Disappearance of 319 million cwt of potatoes is down 2 percent from last year but 4 percent above two years ago. Shrink and loss, at 27.0 million cwt so far this season, is up 5 percent from last year and 8 percent above the same date in 2002. Processors in the 9 major States used 154 million cwt of potatoes this season, down 3 percent from a year ago but 4 percent above two years ago. Dehydrating usage accounts for 34.6 million cwt of the total processing, down 4 percent from last year.

## Fall Potatoes: Production and Stocks 15 Storage States

Mil Cwt



Production by crop year. Stocks by months following harvest.

**Fall Potatoes: Production and Stocks, 15 Major States, 1994-2003**

Crop Year	Production	Dec 1	Jan 1	Feb 1	Mar 1	Apr 1	May 1	Jun 1 <sup>1</sup>
	<i>1,000 Cwt</i>	<i>1,000 Cwt</i>	<i>1,000 Cwt</i>	<i>1,000 Cwt</i>	<i>1,000 Cwt</i>	<i>1,000 Cwt</i>	<i>1,000 Cwt</i>	<i>1,000 Cwt</i>
1994	410,839	273,290	238,560	202,470	169,570	129,825	87,600	
1995	394,785	256,710	223,550	189,360	156,020	115,855	75,870	
1996	443,704	295,100	261,320	226,080	189,210	147,635	103,210	
1997	413,513	278,830	246,550	212,562	175,870	134,190	92,840	
1998	423,170	280,910	246,230	209,640	173,650	131,220	87,895	50,270
1999	420,567	275,100	239,910	207,150	169,620	128,410	86,915	47,220
2000	458,827	310,300	275,270	234,260	197,670	153,520	109,160	61,240
2001 <sup>2</sup>	387,033	258,750	224,680	192,190	158,590	119,950	81,200	42,990
2002 <sup>2</sup>	407,085	264,585	231,690	199,320	165,310	125,870	82,940	45,980
2003	403,946	267,860	233,880	200,530	166,690	126,410	84,800	

<sup>1</sup> Data not available prior to 1998.

<sup>2</sup> Production revised in *Field Crops, Final Estimates 1997 - 2002* publication released March 17, 2004. Stocks will be revised in *Potatoes and Sweet Potatoes, Final Estimates 1997 - 2002* publication tentatively scheduled for release August 20, 2004.

**Potatoes: Quantity Used for Processing, 9 States, 2001-2003 <sup>1</sup>**

State and Crop Year	Dec 1	Jan 1	Feb 1	Mar 1	Apr 1	May 1	Jun 1	Season
	<i>1,000 Cwt</i>	<i>1,000 Cwt</i>	<i>1,000 Cwt</i>	<i>1,000 Cwt</i>	<i>1,000 Cwt</i>	<i>1,000 Cwt</i>	<i>1,000 Cwt</i>	<i>1,000 Cwt</i>
<b>ID &amp; OR-Mal</b>								
2001	20,940	27,330	33,620	40,860	47,710	54,150	61,200	73,390
2002	28,380	34,860	41,200	48,600	56,240	63,840	71,280	85,390
2003	24,310	30,730	36,260	43,640	49,570	56,380		
<b>ME <sup>2</sup></b>								
2001	1,975	2,440	3,110	3,700	4,285	4,775	5,515	7,195
2002	2,230	2,715	3,345	3,905	4,505	5,225	5,905	7,835
2003	1,590	2,095	2,725	3,415	4,105	4,760		
<b>WA &amp; OR-Oth</b>								
2001	29,320	35,310	40,540	47,910	54,970	61,360	69,400	77,180
2002	33,680	39,490	44,190	51,920	58,710	64,300	71,480	79,110
2003 <sup>3</sup>	32,670	38,520	43,610	51,210	58,500	64,160		
<b>Other Sts <sup>4</sup></b>								
2001	13,170	14,925	19,000	22,115	24,655	27,815	30,460	37,740
2002	12,190	14,865	17,865	20,740	23,580	26,000	29,075	36,705
2003	12,570	15,410	18,760	21,885	25,055	28,585		
<b>Total</b>								
2001	65,405	80,005	96,270	114,585	131,620	148,100	166,575	195,505
2002	76,480	91,930	106,600	125,165	143,035	159,365	177,740	209,040
2003 <sup>3</sup>	71,140	86,755	101,355	120,150	137,230	153,885		
<b>Dehydrated <sup>5</sup></b>								
2001 <sup>6</sup>								38,581
2002	15,670	19,660	23,710	27,950	31,910	36,105	40,455	48,943
2003	14,250	18,370	22,050	26,090	30,290	34,630		

<sup>1</sup> Total quantity received and used for processing regardless of the State in which the potatoes were produced. Amount excludes quantities used for potato chips in ME, CO, MI, and WI.

<sup>2</sup> Includes Maine grown potatoes only.

<sup>3</sup> April revised.

<sup>4</sup> MN, NV, ND, SD, and WI in 2001. CO, MN, NV, ND, and WI in 2002 and 2003.

<sup>5</sup> Dehydrated products except starch and flour. Included in above totals. Includes CO, ID, NV, ND, OR, WA, and WI.

<sup>6</sup> No monthly data available.

**Fall Potatoes: Production and Stocks on May 1, 2003-2004 <sup>1</sup>**

State	Crop of 2002			Crop of 2003		
	Prod	Stocks May 1, 2003 <sup>2</sup>	% of Prod	Prod	Stocks May 1, 2004 <sup>2</sup>	% of Prod
	<i>1,000 Cwt</i>	<i>1,000 Cwt</i>	<i>Percent</i>	<i>1,000 Cwt</i>	<i>1,000 Cwt</i>	<i>Percent</i>
CA <sup>3</sup>	4,316	1,000	23	3,444	1,200	35
CO	27,885	5,800	21	23,652	3,600	15
ID	133,385	34,500	26	123,180	33,500	27
ME	16,960	3,900	23	17,030	4,100	24
MI	13,878	1,000	7	15,015	1,600	11
MN <sup>3</sup>	18,810	4,300	23	22,330	5,500	25
MT	3,224	400	12	3,339	500	15
NE	8,611			9,860		
NY	5,500			6,510	450	7
ND	23,460	5,500	23	27,440	8,300	30
OH <sup>3</sup>	902			1,290		
OR	24,936	5,000	20	20,991	5,500	26
PA <sup>3</sup>	2,128			3,915	100	3
WA <sup>3</sup>	92,340	16,500	18	93,150	15,000	16
WI <sup>3</sup>	30,750	3,700	12	32,800	3,800	12
Other Sts		1,340			1,650	
15 Sts <sup>3</sup>	407,085	82,940	20	403,946	84,800	21

<sup>1</sup> Stocks include processor holdings and most of the seed to plant following year's crop. Seed usage for all seasons in 2003 totaled 28.3 million cwt.

<sup>2</sup> Missing stocks combined into "Other Sts".

<sup>3</sup> 2002 production revised in *Field Crops, Final Estimates 1997 - 2002* publication released March 17, 2004. Stocks will be revised in *Potatoes and Sweet Potatoes, Final Estimates 1997 - 2002* publication tentatively scheduled for release August 20, 2004.

NOTE: Stocks are defined as the quantity (whether sold or not) remaining in storage for all purposes and uses, including seed potatoes that are not yet moved, and shrinkage, waste, and other losses that occur after the date of each report. Sales of fall potatoes for all purposes for the past 5 years averaged 90.8 percent of the total fall production. Shrinkage, loss, and home use account for the remaining 9.2 percent.

**Potatoes: Production, Sold, Not Sold, and Kept for Seed,  
United States, 1998-2003**

Crop Year	Fall Potatoes					Amount Used for Seed All Seasons Following year
	Production	Sold	Sold as % of Prod	Not Sold	Not Sold as % of Prod	
	<i>1,000 Cwt</i>	<i>1,000 Cwt</i>	<i>Percent</i>	<i>1,000 Cwt</i>	<i>Percent</i>	<i>1,000 Cwt</i>
1998	432,737	392,922	90.8	39,815	9.2	29,217
1999	429,847	390,210	90.8	39,637	9.2	29,709
2000 <sup>1</sup>	467,529	420,279	89.9	47,225	10.1	27,145
2001 <sup>1</sup>	393,631	358,954	91.2	34,796	8.8	28,639
2002 <sup>1</sup>	413,581	379,491	91.6	34,826	8.4	28,299
2003	411,386					

<sup>1</sup> Production revised in *Field Crops, Final Estimates 1997 - 2002* publication released March 17, 2004. Disposition will be revised in *Potatoes and Sweet Potatoes, Final Estimates 1997 - 2002* publication tentatively scheduled for release August 20, 2004.

**Fall Potatoes: Production, May 1 Stocks, and Farm Disposition,  
15 Storage States and 23 Fall Season States, 2000-2003 Crop Years**

State	Crop Year	Production	Stocks May 1 <sup>1</sup>	Total Used For Fall Seed	Farm Disposition		
					Where Grown		Sold
					Seed, Feed, Home Use	Shrinkage and Loss	
		<i>1,000 Cwt</i>	<i>1,000 Cwt</i>	<i>1,000 Cwt</i>	<i>1,000 Cwt</i>	<i>1,000 Cwt</i>	<i>1,000 Cwt</i>
CA	2000	3,741	800	58	11	300	3,430
	2001 <sup>2</sup>	1,513		223	3	128	1,293
	2002 <sup>2</sup>	4,316	1,000	198	16	400	3,848
	2003	3,444	1,200				
CO	2000	27,972	7,400	1,771	1,485	3,847	22,640
	2001	21,357	5,100	1,790	1,465	1,887	18,005
	2002	27,885	5,800	1,724	1,460	2,845	23,580
	2003	23,652	3,600				
ID	2000	152,320	47,000	8,140	1,190	13,718	137,412
	2001	120,200	32,500	8,250	1,230	8,261	110,709
	2002	133,385	34,500	7,920	1,440	8,650	123,295
	2003	123,180	33,500				
ME	2000	17,920	4,000	1,302	315	1,490	16,115
	2001	16,430	3,300	1,344	301	849	15,280
	2002	16,960	3,900	1,386	310	790	15,860
	2003	17,030	4,100				
MI	2000	14,963	700	1,135	250	1,700	13,013
	2001	13,950	400	1,181	245	945	12,760
	2002	13,878	1,000	1,123	205	1,400	12,273
	2003	15,015	1,600				
MN	2000	21,240	5,800	1,140	130	1,700	19,410
	2001	18,425	4,300	1,159	190	1,700	16,535
	2002 <sup>2</sup>	18,810	4,300	1,098	130	1,400	17,170
	2003	22,330	5,500				
MT	2000	3,503	750	211	133	732	2,638
	2001	3,296	450	263	152	188	2,956
	2002	3,224	400	254	145	142	2,937
	2003	3,339	500				
NE	2000	10,127		542	182	730	9,215
	2001	8,400		570	153	720	7,527
	2002	8,611		611	149	612	7,850
	2003	9,860					
NY	2000	5,964		517	108	406	5,450
	2001	5,942		495	100	502	5,340
	2002	5,500		488	100	350	5,050
	2003	6,510	450				

--continued

**Fall Potatoes: Production, May 1 Stocks, and Farm Disposition,  
15 Storage States and 23 Fall Season States, 2000-2003 Crop Years (continued)**

State	Crop Year	Production	Stocks May 1 <sup>1</sup>	Total Used For Fall Seed	Farm Disposition		
					Where Grown		Sold
					Seed, Feed, Home Use	Shrinkage and Loss	
		<i>1,000 Cwt</i>	<i>1,000 Cwt</i>	<i>1,000 Cwt</i>	<i>1,000 Cwt</i>	<i>1,000 Cwt</i>	<i>1,000 Cwt</i>
ND	2000	26,950	6,800	2,035	295	3,235	23,420
	2001	26,400	6,900	2,301	320	3,960	22,120
	2002	23,460	5,500	2,242	450	2,650	20,360
	2003	27,440	8,300				
OH	2000	1,134		102	2	35	1,097
	2001	1,097		90	3	36	1,058
	2002 <sup>2</sup>	902		89	2	12	889
	2003	1,290					
OR	2000	30,683	10,000	957	140	1,915	28,628
	2001	20,730	6,500	1,200	175	1,059	19,496
	2002	24,936	5,000	1,021	266	1,386	23,284
	2003	20,991	5,500				
PA	2000	3,510		252	44	165	3,301
	2001 <sup>2</sup>	2,938		285	59	120	2,994
	2002 <sup>2</sup>	2,128		276	38	78	2,474
	2003	3,915	100				
WA	2000	105,000	21,500	3,960	300	9,500	95,200
	2001	94,400	18,000	3,960	300	7,000	87,100
	2002 <sup>2</sup>	92,340	16,500	3,960	300	6,500	85,600
	2003	93,150	15,000				
WI	2000	33,800	3,300	1,700	264	1,949	31,587
	2001	31,955	3,000	1,615	278	1,947	29,730
	2002 <sup>2</sup>	30,750	3,700	1,848	265	1,775	29,085
	2003	32,800	3,800				
Other Sts	2000		1,110				
	2001		750				
	2002		1,340				
	2003		1,650				
15 Sts	2000	458,827	109,160	23,822	4,849	41,422	412,556
	2001 <sup>2</sup>	387,033	81,200	24,726	4,974	29,302	352,903
	2002 <sup>2</sup>	407,085	82,940	24,238	5,276	28,990	373,555
	2003	403,946	84,800				
Fall Sts	2000 <sup>2</sup>	467,529		24,249	4,968	42,257	420,279
	2001 <sup>2</sup>	393,631		25,143	5,039	29,757	358,954
	2002 <sup>2</sup>	413,581		24,681	5,401	29,425	379,491
	2003	411,386					

<sup>1</sup> Missing stocks combined into "Other Sts" to avoid disclosure of individual operations.

<sup>2</sup> Production revised in *Field Crops, Final Estimates 1997 - 2002* publication released March 17, 2004. Disposition will be revised in *Potatoes and Sweet Potatoes, Final Estimates 1997 - 2002* publication tentatively scheduled for release August 20, 2004.

**Fall Potatoes: Farm Marketings, Selected States,  
2000-2002 Marketing Years**

State	Crop Year	Jul	Aug	Sep	Oct	Nov	Dec	Jan	Feb	Mar	Apr	May	Jun	Jul
		<i>Percent</i>	<i>Percent</i>	<i>Percent</i>	<i>Percent</i>	<i>Percent</i>	<i>Percent</i>	<i>Percent</i>	<i>Percent</i>	<i>Percent</i>	<i>Percent</i>	<i>Percent</i>	<i>Percent</i>	<i>Percent</i>
CA	2000				9	11	13	10	9	11	7	11	9	10
	2001					15	11	17	17	22	18			
	2002				11	11	11	10	10	10	13	8	9	7
CO	2000			5	8	10	10	11	8	11	11	12	9	5
	2001			5	10	11	12	12	9	11	10	11	7	2
	2002			4	9	10	10	11	9	11	11	10	7	8
ID	2000		5	9	10	9	6	7	6	9	9	13	8	9
	2001		3	12	13	8	6	7	9	10	10	10	6	6
	2002		4	8	11	10	7	8	8	10	11	10	7	6
ME	2000		2	8	8	7	9	9	12	12	15	10	5	3
	2001		1	9	10	9	9	12	11	11	12	8	5	3
	2002		2	7	11	9	8	10	9	10	15	10	5	4
MI	2000	3	7	8	12	12	12	11	12	11	7	4	1	
	2001	3	7	8	12	11	12	13	11	11	8	3	1	
	2002	4	7	11	12	13	8	6	8	12	13	6		
MN	2000	2	8	8	7	6	5	6	7	10	11	12	18	
	2001		10	9	7	7	6	7	9	10	10	9	8	8
	2002		9	9	9	7	8	7	9	7	9	12	8	6
NY	2000		2	26	18	11	12	8	8	10	5			
	2001		4	20	18	17	15	9	7	6	4			
	2002		8	17	16	14	11	14	10	7	3			
ND	2000		4	21	11	10	5	8	5	9	11	8	8	
	2001			18	10	12	7	8	7	7	14	11	6	
	2002		2	22	10	9	6	9	4	8	10	13	5	2
OR	2000	3	9	12	21	4	5	5	6	7	7	9	6	6
	2001		7	13	21	8	6	5	7	7	8	8	7	3
	2002		11	9	21	9	9	6	9	8	6	7	3	2
PA	2000		14	13	12	12	13	11	9	7	6	2	1	
	2001		17	16	15	12	12	10	8	7	2	1		
	2002		18	14	17	14	10	9	6	5	4	3		
WA	2000		16	14	25	7	4	6	5	5	5	5	5	3
	2001		11	13	25	7	6	5	7	7	6	7	5	1
	2002		17	12	19	9	5	5	7	6	6	7	6	1
WI	2000	1	7	15	14	11	8	8	9	10	10	5	2	
	2001	1	6	13	14	12	10	9	8	10	11	5	1	
	2002	1	7	12	12	12	9	9	8	12	10	6	2	

## May Potato Stocks Up 2 Percent from Last Year

The 15 major potato States held 84.8 million cwt of potatoes in storage May 1, 2004, up 2 percent from last year and 4 percent above 2002. Potatoes in storage account for 21 percent of the 2003 fall storage States' production, up 1 percentage point from last year.

Disappearance of 319 million cwt of potatoes is down 2 percent from last year but 4 percent above two years ago. Shrink and loss, at 27.0 million cwt so far this season, is up 5 percent from last year and 8 percent above two years ago. This disappearance and loss includes unmarketable Maine potatoes disposed of through the Natural Resources Conservation Service's Environmental Quality Incentives Program.

Processors used 154 million cwt of 2003 crop potatoes so far this season, down 3 percent from a year ago but 4 percent above two years ago. April usage of 16.7 million cwt is 2 percent above last year and up 1 percent from two years ago. Dehydrators used 34.6 million cwt to date, down 4 percent from last year.

Western States held 59.3 million cwt of potatoes in storage on May 1, down 6 percent from last year and 5 percent below two years ago. Idaho's potato stocks are down 3 percent from last year, Washington decreased 9 percent, and Colorado's storages held 38 percent less. Potato sheds in Oregon stored 10 percent more than last year, California increased 20 percent, and Montana's storages gained 25 percent.

Central States accounted for 20.9 million cwt of potato stocks on May 1, up 35 percent from last year and 38 percent above two years ago. North Dakota potato sheds stored 51 percent more than last year, Minnesota stocks increased 28 percent, Wisconsin went up 3 percent, and Michigan gained 60 percent. Nebraska and Ohio together are up 65 percent.

Eastern States stored 4.65 million cwt of potatoes on May 1, up 10 percent from last year and 34 percent above two years ago. Maine's stocks are up 5 percent from last year, while New York and Pennsylvania combined increased 62 percent.

**Potatoes: Shrinkage and Loss, 15 Fall Storage States, 2000-2003**

Crop Year	To Dec 1	To Jan 1	To Feb 1	To Mar 1	To Apr 1	To May 1	Total Jun 1	Season
	<i>Million Cwt</i>	<i>Million Cwt</i>	<i>Million Cwt</i>	<i>Million Cwt</i>	<i>Million Cwt</i>	<i>Million Cwt</i>	<i>Million Cwt</i>	<i>Million Cwt</i>
2000	18.7	21.3	26.3	29.2	33.1	36.0	38.4	41.4
2001	14.7	17.3	19.7	21.7	23.5	25.1	26.7	29.3
2002	15.5	18.1	20.3	22.2	24.0	25.7	27.2	29.0
2003	14.9	17.4	20.6	22.6	25.0	27.0		

## Reliability of May 1 Stocks Estimates

To assist users in evaluating the reliability of the May 1 stocks estimate, the "Root Mean Square Error," a statistical measure based on past performance, is computed. The deviation between the May 1 stocks estimate and the final estimate is expressed as a percentage of the final estimate. The average of squared percentage deviations for the latest 20-year period is computed. The square root of the average becomes statistically the "Root Mean Square Error." Probability statements can be made concerning expected differences in the current estimate relative to the final end-of-season estimate, assuming that factors affecting this year's estimate are not different from those influencing recent years.

The "Root Mean Square Error" for the May 1 stocks estimate is 6.8 percent. This means that chances are 2 out of 3 that the current estimate of 84.8 million cwt will not be above or below the final estimate by more than 6.8 percent or approximately 5.8 million cwt. Chances are 9 out of 10 (90 percent confidence level) that the difference will not exceed 11.7 percent or approximately 9.9 million cwt.

The 10-year (1993-2002) record of differences between the May 1 stocks estimates and the final estimates averaged 3.7 million cwt, ranging from 9.9 million cwt above the final to 6.1 million cwt below the final. During the 10-year period, the May 1 estimate has been below the final estimate 7 years and above 3 years.

**Fall Potato Stocks: Preliminary and Final May 1 Stocks,  
United States, 1993-2003**

Crop Year	Preliminary Stocks <i>1,000 Cwt</i>	% of Final <i>Percent</i>	Final Stocks <i>1,000 Cwt</i>
1993	68,060	93.4	72,860
1994	81,495	93.0	87,600
1995	72,210	95.2	75,870
1996	100,780	97.6	103,210
1997	87,113	93.8	92,840
1998	87,640	99.7	87,895
1999	85,670	98.6	86,915
2000	111,425	102.1	109,160
2001	91,140	112.2	81,200
2002	83,180	100.3	82,940
2003	84,800		



The next *Potato Stocks* report will be released at 3 p.m. ET on June 15, 2004.

The United States Department of Agriculture (USDA) prohibits discrimination in all its programs on the basis of race, color, national origin, gender, religion, age, disability, political beliefs, sexual orientation, and marital or family status. (Not all prohibited bases apply to all programs.) Persons with disabilities who require alternative means for communication of program information (braille, large print, audiotape, etc.) should contact the USDA's TARGET Center at 202-720-2600 (voice and TDD).

To file a complaint of discrimination, write USDA, Director, Office of Civil Rights, Room 326-W, Whitten Building, 1400 Independence Avenue, SW, Washington, D.C., 20250-9410, or call 202-720-5964 (voice or TDD). USDA is an equal opportunity provider and employer.

## ACCESS TO REPORTS!!

---

For your convenience, there are several ways to obtain NASS reports, data products, and services:

### INTERNET ACCESS

All NASS reports are available free of charge on the worldwide Internet. For access, connect to the Internet and go to the NASS Home Page at: [www.usda.gov/nass/](http://www.usda.gov/nass/). Select "Today's Reports" or Publications and then Reports Calendar or Publications and then Search, by Title or Subject.

### E-MAIL SUBSCRIPTION

All NASS reports are available by subscription free of charge direct to your e-mail address. Starting with the NASS Home Page at [www.usda.gov/nass/](http://www.usda.gov/nass/), click on **Publications**, then click on the **Subscribe by E-mail** button which takes you to the page describing e-mail delivery of reports. Finally, click on **Go to the Subscription Page** and follow the instructions.

-----

### PRINTED REPORTS OR DATA PRODUCTS

**CALL OUR TOLL-FREE ORDER DESK: 800-999-6779 (U.S. and Canada)**  
**Other areas, please call 703-605-6220      FAX: 703-605-6900**  
**(Visa, MasterCard, check, or money order acceptable for payment.)**

-----

### ASSISTANCE

For **assistance** with general agricultural statistics or further information about NASS or its products or services, contact the **Agricultural Statistics Hotline** at **800-727-9540**, 7:30 a.m. to 4:00 p.m. ET, or e-mail: [nass@nass.usda.gov](mailto:nass@nass.usda.gov).

---