

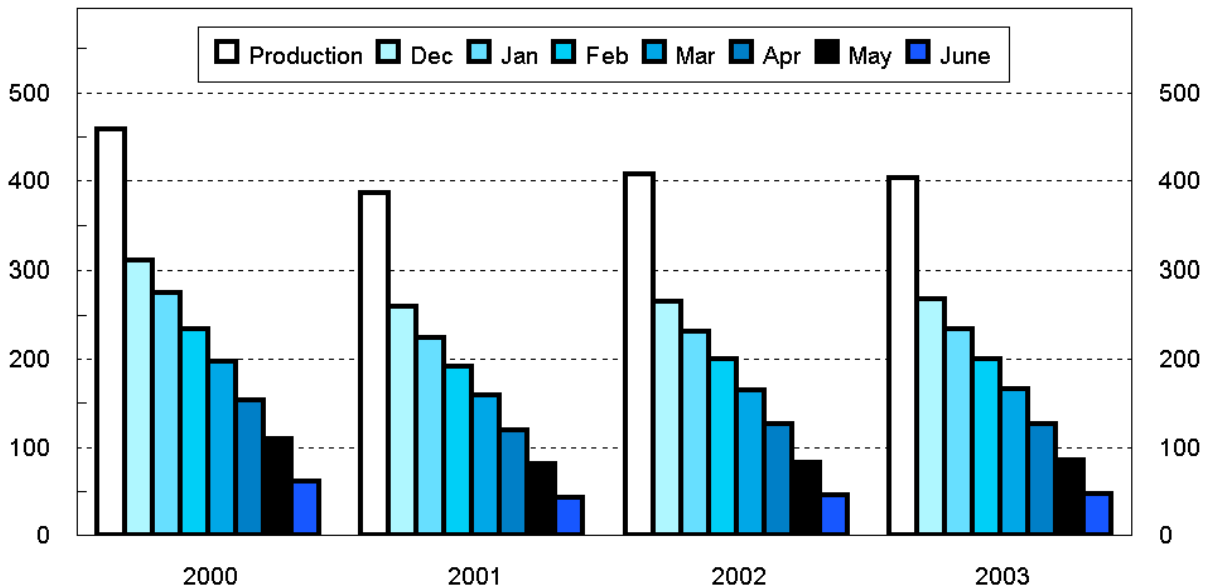
Released June 15, 2004, by the National Agricultural Statistics Service (NASS), Agricultural Statistics Board, U.S. Department of Agriculture. For information on *Potato Stocks* call Cathy Scherrer at (202) 720-4285, office hours 7:30 a.m. to 4:00 p.m. ET.

Potato Stocks Up 3 Percent

The 15 major potato States held 47.4 million cwt of potatoes in storage June 1, 2004, up 3 percent from last year and 10 percent above 2002. Potatoes in storage account for 12 percent of the 2003 fall storage States' production, 1 percentage point above last year. Disappearance of 357 million cwt of potatoes is down 1 percent from last year but 4 percent above two years ago. Shrink and loss, at 29.2 million cwt so far this season, is up 7 percent from last year and 9 percent above the same date in 2002. Processors in the 9 major States used 173 million cwt of potatoes this season, down 2 percent from a year ago but 4 percent above two years ago. Dehydrating usage accounts for 39.1 million cwt of the total processing, down 3 percent from last year.

Fall Potatoes: Production and Stocks 15 Storage States

Mil Cwt



Production by crop year. Stocks by months following harvest.

Fall Potatoes: Production and Stocks, 15 Major States, 1994-2003

Crop Year	Production	Dec 1	Jan 1	Feb 1	Mar 1	Apr 1	May 1	Jun 1 ¹
	<i>1,000 Cwt</i>	<i>1,000 Cwt</i>	<i>1,000 Cwt</i>	<i>1,000 Cwt</i>	<i>1,000 Cwt</i>	<i>1,000 Cwt</i>	<i>1,000 Cwt</i>	<i>1,000 Cwt</i>
1994	410,839	273,290	238,560	202,470	169,570	129,825	87,600	
1995	394,785	256,710	223,550	189,360	156,020	115,855	75,870	
1996	443,704	295,100	261,320	226,080	189,210	147,635	103,210	
1997	413,513	278,830	246,550	212,562	175,870	134,190	92,840	
1998	423,170	280,910	246,230	209,640	173,650	131,220	87,895	50,270
1999	420,567	275,100	239,910	207,150	169,620	128,410	86,915	47,220
2000	458,827	310,300	275,270	234,260	197,670	153,520	109,160	61,240
2001 ²	387,033	258,750	224,680	192,190	158,590	119,950	81,200	42,990
2002 ²	407,085	264,585	231,690	199,320	165,310	125,870	82,940	45,980
2003	403,946	267,860	233,880	200,530	166,690	126,410	84,800	47,410

¹ Data not available prior to 1998.

² Production revised in *Field Crops, Final Estimates 1997 - 2002* publication released March 17, 2004. Stocks will be revised in *Potatoes and Sweet Potatoes, Final Estimates 1997 - 2002* publication tentatively scheduled for release August 20, 2004.

Potatoes: Quantity Used for Processing, 9 States, 2001-2003 ¹

State and Crop Year	Dec 1	Jan 1	Feb 1	Mar 1	Apr 1	May 1	Jun 1	Season
	<i>1,000 Cwt</i>	<i>1,000 Cwt</i>	<i>1,000 Cwt</i>	<i>1,000 Cwt</i>	<i>1,000 Cwt</i>	<i>1,000 Cwt</i>	<i>1,000 Cwt</i>	<i>1,000 Cwt</i>
ID & OR-Mal								
2001	20,940	27,330	33,620	40,860	47,710	54,150	61,200	73,390
2002	28,380	34,860	41,200	48,600	56,240	63,840	71,280	85,390
2003	24,310	30,730	36,260	43,640	49,570	56,380	63,770	
ME ²								
2001	1,975	2,440	3,110	3,700	4,285	4,775	5,515	7,195
2002	2,230	2,715	3,345	3,905	4,505	5,225	5,905	7,835
2003 ³	1,590	2,095	2,725	3,415	4,105	4,730	5,335	
WA & OR-Oth								
2001	29,320	35,310	40,540	47,910	54,970	61,360	69,400	77,180
2002	33,680	39,490	44,190	51,920	58,710	64,300	71,480	79,110
2003	32,670	38,520	43,610	51,210	58,500	64,160	72,350	
Other Sts ⁴								
2001	13,170	14,925	19,000	22,115	24,655	27,815	30,460	37,740
2002	12,190	14,865	17,865	20,740	23,580	26,000	29,075	36,705
2003	12,570	15,410	18,760	21,885	25,055	28,585	31,920	
Total								
2001	65,405	80,005	96,270	114,585	131,620	148,100	166,575	195,505
2002	76,480	91,930	106,600	125,165	143,035	159,365	177,740	209,040
2003 ³	71,140	86,755	101,355	120,150	137,230	153,855	173,375	
Dehydrated ⁵								
2001 ⁶								38,581
2002	15,670	19,660	23,710	27,950	31,910	36,105	40,455	48,943
2003	14,250	18,370	22,050	26,090	30,290	34,630	39,085	

¹ Total quantity received and used for processing regardless of the State in which the potatoes were produced. Amount excludes quantities used for potato chips in ME, CO, MI, and WI.

² Includes Maine grown potatoes only.

³ May revised.

⁴ MN, NV, ND, SD, and WI in 2001. CO, MN, NV, ND, and WI in 2002 and 2003.

⁵ Dehydrated products except starch and flour. Included in above totals. Includes CO, ID, NV, ND, OR, WA, and WI.

⁶ No monthly data available.

Fall Potatoes: Production and Stocks on June 1, 2003-2004 ¹

State	Crop of 2002			Crop of 2003		
	Prod	Stocks Jun 1, 2003 ²	% of Prod	Prod	Stocks Jun 1, 2004 ²	% of Prod
	<i>1,000 Cwt</i>	<i>1,000 Cwt</i>	<i>Percent</i>	<i>1,000 Cwt</i>	<i>1,000 Cwt</i>	<i>Percent</i>
CA ³	4,316	700	16	3,444		
CO	27,885	3,800	14	23,652	1,800	8
ID	133,385	21,000	16	123,180	20,500	17
ME	16,960	2,100	12	17,030	2,300	14
MI	13,878			15,015		
MN ³	18,810	2,300	12	22,330	3,500	16
MT	3,224			3,339		
NE	8,611			9,860		
NY	5,500			6,510		
ND	23,460	2,700	12	27,440	5,000	18
OH ³	902			1,290		
OR	24,936	2,300	9	20,991	2,900	14
PA ³	2,128			3,915		
WA ³	92,340	9,000	10	93,150	7,000	8
WI ³	30,750	1,300	4	32,800	2,000	6
Other Sts		780			2,410	
15 Sts ³	407,085	45,980	11	403,946	47,410	12

¹ Stocks include processor holdings and most of the seed to plant following year's crop. Seed usage for all seasons in 2003 totaled 28.3 million cwt.

² Missing stocks combined into "Other Sts".

³ 2002 production revised in *Field Crops, Final Estimates 1997 - 2002* publication released March 17, 2004. Stocks will be revised in *Potatoes and Sweet Potatoes, Final Estimates 1997 - 2002* publication tentatively scheduled for release August 20, 2004.

NOTE: Stocks are defined as the quantity (whether sold or not) remaining in storage for all purposes and uses, including seed potatoes that are not yet moved, and shrinkage, waste, and other losses that occur after the date of each report. Sales of fall potatoes for all purposes for the past 5 years averaged 90.8 percent of the total fall production. Shrinkage, loss, and home use account for the remaining 9.2 percent.

**Potatoes: Production, Sold, Not Sold, and Kept for Seed,
United States, 1998-2003**

Crop Year	Fall Potatoes					Amount Used for Seed All Seasons Following year
	Production	Sold	Sold as % of Prod	Not Sold	Not Sold as % of Prod	
	<i>1,000 Cwt</i>	<i>1,000 Cwt</i>	<i>Percent</i>	<i>1,000 Cwt</i>	<i>Percent</i>	<i>1,000 Cwt</i>
1998	432,737	392,922	90.8	39,815	9.2	29,217
1999	429,847	390,210	90.8	39,637	9.2	29,709
2000 ¹	467,529	420,279	89.9	47,225	10.1	27,145
2001 ¹	393,631	358,954	91.2	34,796	8.8	28,639
2002 ¹	413,581	379,491	91.6	34,826	8.4	28,299
2003	411,386					

¹ Production revised in *Field Crops, Final Estimates 1997 - 2002* publication released March 17, 2004. Disposition will be revised in *Potatoes and Sweet Potatoes, Final Estimates 1997 - 2002* publication tentatively scheduled for release August 20, 2004.

**Fall Potatoes: Production, June 1 Stocks, and Farm Disposition,
15 Storage States and 23 Fall Season States, 2000-2003 Crop Years**

State	Crop Year	Production	Stocks Jun 1 ¹	Total Used For Fall Seed	Farm Disposition		
					Where Grown		Sold
					Seed, Feed, Home Use	Shrinkage and Loss	
		<i>1,000 Cwt</i>	<i>1,000 Cwt</i>	<i>1,000 Cwt</i>	<i>1,000 Cwt</i>	<i>1,000 Cwt</i>	<i>1,000 Cwt</i>
CA	2000	3,741	500	58	11	300	3,430
	2001 ²	1,513		223	3	128	1,293
	2002 ²	4,316	700	198	16	400	3,848
	2003	3,444					
CO	2000	27,972	3,500	1,771	1,485	3,847	22,640
	2001	21,357	1,700	1,790	1,465	1,887	18,005
	2002	27,885	3,800	1,724	1,460	2,845	23,580
	2003	23,652	1,800				
ID	2000	152,320	26,500	8,140	1,190	13,718	137,412
	2001	120,200	18,500	8,250	1,230	8,261	110,709
	2002	133,385	21,000	7,920	1,440	8,650	123,295
	2003	123,180	20,500				
ME	2000	17,920	1,900	1,302	315	1,490	16,115
	2001	16,430	1,800	1,344	301	849	15,280
	2002	16,960	2,100	1,386	310	790	15,860
	2003	17,030	2,300				
MI	2000	14,963		1,135	250	1,700	13,013
	2001	13,950		1,181	245	945	12,760
	2002	13,878		1,123	205	1,400	12,273
	2003	15,015					
MN	2000	21,240	3,500	1,140	130	1,700	19,410
	2001	18,425	2,600	1,159	190	1,700	16,535
	2002 ²	18,810	2,300	1,098	130	1,400	17,170
	2003	22,330	3,500				
MT	2000	3,503	320	211	133	732	2,638
	2001	3,296		263	152	188	2,956
	2002	3,224		254	145	142	2,937
	2003	3,339					
NE	2000	10,127		542	182	730	9,215
	2001	8,400		570	153	720	7,527
	2002	8,611		611	149	612	7,850
	2003	9,860					
NY	2000	5,964		517	108	406	5,450
	2001	5,942		495	100	502	5,340
	2002	5,500		488	100	350	5,050
	2003	6,510					

--continued

**Fall Potatoes: Production, June 1 Stocks, and Farm Disposition,
15 Storage States and 23 Fall Season States, 2000-2003 Crop Years (continued)**

State	Crop Year	Production	Stocks Jun 1 ¹	Total Used For Fall Seed	Farm Disposition		
					Where Grown		Sold
					Seed, Feed, Home Use	Shrinkage and Loss	
		<i>1,000 Cwt</i>	<i>1,000 Cwt</i>	<i>1,000 Cwt</i>	<i>1,000 Cwt</i>	<i>1,000 Cwt</i>	<i>1,000 Cwt</i>
ND	2000	26,950	4,000	2,035	295	3,235	23,420
	2001	26,400	4,000	2,301	320	3,960	22,120
	2002	23,460	2,700	2,242	450	2,650	20,360
	2003	27,440	5,000				
OH	2000	1,134		102	2	35	1,097
	2001	1,097		90	3	36	1,058
	2002 ²	902		89	2	12	889
	2003	1,290					
OR	2000	30,683	6,400	957	140	1,915	28,628
	2001	20,730	3,000	1,200	175	1,059	19,496
	2002	24,936	2,300	1,021	266	1,386	23,284
	2003	20,991	2,900				
PA	2000	3,510		252	44	165	3,301
	2001 ²	2,938		285	59	120	2,994
	2002 ²	2,128		276	38	78	2,474
	2003	3,915					
WA	2000	105,000	13,000	3,960	300	9,500	95,200
	2001	94,400	10,000	3,960	300	7,000	87,100
	2002 ²	92,340	9,000	3,960	300	6,500	85,600
	2003	93,150	7,000				
WI	2000	33,800	1,400	1,700	264	1,949	31,587
	2001	31,955	1,100	1,615	278	1,947	29,730
	2002 ²	30,750	1,300	1,848	265	1,775	29,085
	2003	32,800	2,000				
Other Sts	2000		220				
	2001		290				
	2002		780				
	2003		2,410				
15 Sts	2000	458,827	61,240	23,822	4,849	41,422	412,556
	2001 ²	387,033	42,990	24,726	4,974	29,302	352,903
	2002 ²	407,085	45,980	24,238	5,276	28,990	373,555
	2003	403,946	47,410				
Fall Sts	2000 ²	467,529		24,249	4,968	42,257	420,279
	2001 ²	393,631		25,143	5,039	29,757	358,954
	2002 ²	413,581		24,681	5,401	29,425	379,491
	2003	411,386					

¹ Missing stocks combined into "Other Sts" to avoid disclosure of individual operations.

² Production revised in *Field Crops, Final Estimates 1997 - 2002* publication released March 17, 2004. Disposition will be revised in *Potatoes and Sweet Potatoes, Final Estimates 1997 - 2002* publication tentatively scheduled for release August 20, 2004.

**Fall Potatoes: Farm Marketings, Selected States,
2000-2002 Marketing Years**

State	Crop Year	Jul	Aug	Sep	Oct	Nov	Dec	Jan	Feb	Mar	Apr	May	Jun	Jul
		<i>Percent</i>	<i>Percent</i>	<i>Percent</i>	<i>Percent</i>	<i>Percent</i>	<i>Percent</i>	<i>Percent</i>	<i>Percent</i>	<i>Percent</i>	<i>Percent</i>	<i>Percent</i>	<i>Percent</i>	<i>Percent</i>
CA	2000				9	11	13	10	9	11	7	11	9	10
	2001					15	11	17	17	22	18			
	2002				11	11	11	10	10	10	13	8	9	7
CO	2000			5	8	10	10	11	8	11	11	12	9	5
	2001			5	10	11	12	12	9	11	10	11	7	2
	2002			4	9	10	10	11	9	11	11	10	7	8
ID	2000		5	9	10	9	6	7	6	9	9	13	8	9
	2001		3	12	13	8	6	7	9	10	10	10	6	6
	2002		4	8	11	10	7	8	8	10	11	10	7	6
ME	2000		2	8	8	7	9	9	12	12	15	10	5	3
	2001		1	9	10	9	9	12	11	11	12	8	5	3
	2002		2	7	11	9	8	10	9	10	15	10	5	4
MI	2000	3	7	8	12	12	12	11	12	11	7	4	1	
	2001	3	7	8	12	11	12	13	11	11	8	3	1	
	2002	4	7	11	12	13	8	6	8	12	13	6		
MN	2000	2	8	8	7	6	5	6	7	10	11	12	18	
	2001		10	9	7	7	6	7	9	10	10	9	8	8
	2002		9	9	9	7	8	7	9	7	9	12	8	6
NY	2000		2	26	18	11	12	8	8	10	5			
	2001		4	20	18	17	15	9	7	6	4			
	2002		8	17	16	14	11	14	10	7	3			
ND	2000		4	21	11	10	5	8	5	9	11	8	8	
	2001			18	10	12	7	8	7	7	14	11	6	
	2002		2	22	10	9	6	9	4	8	10	13	5	2
OR	2000	3	9	12	21	4	5	5	6	7	7	9	6	6
	2001		7	13	21	8	6	5	7	7	8	8	7	3
	2002		11	9	21	9	9	6	9	8	6	7	3	2
PA	2000		14	13	12	12	13	11	9	7	6	2	1	
	2001		17	16	15	12	12	10	8	7	2	1		
	2002		18	14	17	14	10	9	6	5	4	3		
WA	2000		16	14	25	7	4	6	5	5	5	5	5	3
	2001		11	13	25	7	6	5	7	7	6	7	5	1
	2002		17	12	19	9	5	5	7	6	6	7	6	1
WI	2000	1	7	15	14	11	8	8	9	10	10	5	2	
	2001	1	6	13	14	12	10	9	8	10	11	5	1	
	2002	1	7	12	12	12	9	9	8	12	10	6	2	

June Potato Stocks Up 3 Percent from Last Year

The 15 major potato States held 47.4 million cwt of potatoes in storage June 1, 2004, up 3 percent from last year and 10 percent above 2002. Potatoes in storage account for 12 percent of the 2003 fall storage States' production, up 1 percentage point from last year.

Disappearance of 357 million cwt of potatoes is down 1 percent from last year but 4 percent above two years ago. Shrink and loss, at 29.2 million cwt so far this season, is up 7 percent from last year and 9 percent above two years ago. This disappearance and loss includes unmarketable Maine potatoes disposed of through the Natural Resources Conservation Service's Environmental Quality Incentives Program.

Processors used 173 million cwt of 2003 crop potatoes so far this season, down 2 percent from a year ago but 4 percent above two years ago. May usage of 19.5 million cwt is 6 percent above both last year and two years ago. Dehydrators used 39.1 million cwt to date, down 3 percent from last year.

Western States held 33.2 million cwt of potatoes in storage on June 1, down 10 percent from last year but less than 1 percent below two years ago. Idaho's potato stocks are down 2 percent from last year, Washington decreased 22 percent, and Colorado's storages held 53 percent less. Potato sheds in Oregon stored 26 percent more than last year. California's and Montan's storages combined gained 26 percent.

Central States accounted for 11.9 million cwt of potato stocks on June 1, up 75 percent from last year and 50 percent above two years ago. North Dakota potato sheds stored 85 percent more than last year, Minnesota stocks increased 52 percent, and Wisconsin went up 54 percent. Michigan, Nebraska, and Ohio together are up 180 percent from a year ago.

Eastern States stored 2.33 million cwt of potatoes on June 1, up 1 percent from last year and 29 percent above two years ago. Maine's stocks are up 10 percent from last year, while New York and Pennsylvania combined decreased 85 percent.

Potatoes: Shrinkage and Loss, 15 Fall Storage States, 2000-2003

Crop Year	To Dec 1	To Jan 1	To Feb 1	To Mar 1	To Apr 1	To May 1	Total Jun 1	Season
	<i>Million Cwt</i>	<i>Million Cwt</i>	<i>Million Cwt</i>	<i>Million Cwt</i>	<i>Million Cwt</i>	<i>Million Cwt</i>	<i>Million Cwt</i>	<i>Million Cwt</i>
2000	18.7	21.3	26.3	29.2	33.1	36.0	38.4	41.4
2001	14.7	17.3	19.7	21.7	23.5	25.1	26.7	29.3
2002	15.5	18.1	20.3	22.2	24.0	25.7	27.2	29.0
2003	14.9	17.4	20.6	22.6	25.0	27.0	29.2	

The next *Potato Stocks* report will be released at 3 p.m. ET on December 15, 2004.

ACCESS TO REPORTS!!

For your convenience, there are several ways to obtain NASS reports, data products, and services:

INTERNET ACCESS

All NASS reports are available free of charge on the worldwide Internet. For access, connect to the Internet and go to the NASS Home Page at: www.usda.gov/nass/. Select "Today's Reports" or Publications and then Reports Calendar or Publications and then Search, by Title or Subject.

E-MAIL SUBSCRIPTION

All NASS reports are available by subscription free of charge direct to your e-mail address. Starting with the NASS Home Page at www.usda.gov/nass/, click on **Publications**, then click on the **Subscribe by E-mail** button which takes you to the page describing e-mail delivery of reports. Finally, click on **Go to the Subscription Page** and follow the instructions.

PRINTED REPORTS OR DATA PRODUCTS

CALL OUR TOLL-FREE ORDER DESK: 800-999-6779 (U.S. and Canada)
Other areas, please call 703-605-6220 FAX: 703-605-6900
(Visa, MasterCard, check, or money order acceptable for payment.)

ASSISTANCE

For **assistance** with general agricultural statistics or further information about NASS or its products or services, contact the **Agricultural Statistics Hotline** at **800-727-9540**, 7:30 a.m. to 4:00 p.m. ET, or e-mail: nass@nass.usda.gov.

The United States Department of Agriculture (USDA) prohibits discrimination in all its programs on the basis of race, color, national origin, gender, religion, age, disability, political beliefs, sexual orientation, and marital or family status. (Not all prohibited bases apply to all programs.) Persons with disabilities who require alternative means for communication of program information (braille, large print, audiotape, etc.) should contact the USDA's TARGET Center at 202-720-2600 (voice and TDD).

To file a complaint of discrimination, write USDA, Director, Office of Civil Rights, Room 326-W, Whitten Building, 1400 Independence Avenue, SW, Washington, D.C., 20250-9410, or call 202-720-5964 (voice or TDD). USDA is an equal opportunity provider and employer.