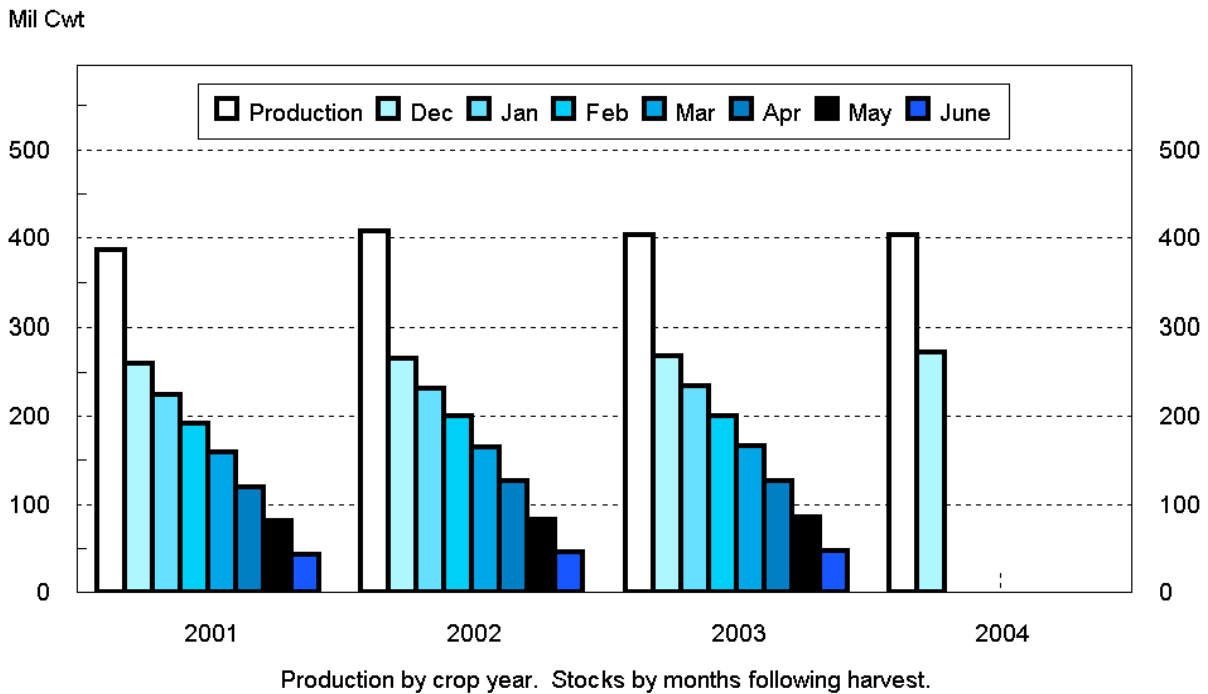


Released December 15, 2004, by the National Agricultural Statistics Service (NASS), Agricultural Statistics Board, U.S. Department of Agriculture. For information on *Potato Stocks* call Cathy Scherrer at (202) 720-4285, office hours 7:30 a.m. to 4:00 p.m. ET.

Potato Stocks Up 1 Percent from Last Year

The 15 major potato States held 272 million cwt of potatoes in storage December 1, 2004, up 1 percent from last year and 3 percent above 2002. Potatoes in storage account for 67 percent of the 2004 fall storage States' production, 1 percentage point above last year. Disappearance of 132 million cwt of potatoes is down 3 percent from last year and 8 percent below two years ago. Shrink and loss, at 16.8 million cwt so far this season, is up 12 percent from last year and 8 percent above the same date in 2002. Processors in the 9 major States used 70.7 million cwt of potatoes this season, down 2 percent from a year ago and 8 percent below two years ago. Dehydrating usage accounts for 13.4 million cwt of the total processing, down 6 percent from last year and 15 percent below the same date in 2002.

Fall Potatoes: Production and Stocks 15 Storage States



Fall Potatoes: Production and Stocks, 15 Major States, 1995-2004

Crop Year	Production	Dec 1	Jan 1	Feb 1	Mar 1	Apr 1	May 1	Jun 1 ¹
	<i>1,000 Cwt</i>	<i>1,000 Cwt</i>	<i>1,000 Cwt</i>	<i>1,000 Cwt</i>	<i>1,000 Cwt</i>	<i>1,000 Cwt</i>	<i>1,000 Cwt</i>	<i>1,000 Cwt</i>
1995	394,785	256,710	223,550	189,360	156,020	115,855	75,870	
1996	443,704	295,100	261,320	226,080	189,210	147,635	103,210	
1997	413,513	278,830	246,550	212,562	175,870	134,190	92,840	
1998	423,170	280,910	246,230	209,640	173,650	131,220	87,895	50,270
1999	420,567	275,100	239,910	207,150	169,620	128,410	86,915	47,220
2000	458,827	310,300	275,270	234,260	197,670	153,520	109,160	61,270
2001	387,033	258,750	224,680	192,090	158,590	119,950	81,200	42,990
2002	407,085	264,485	231,490	199,020	165,210	125,770	83,040	45,880
2003	403,181	267,900	233,590	200,230	166,280	126,110	85,000	46,020
2004	403,127	271,600						

¹ Data not available prior to 1998.

Potatoes: Quantity Used for Processing, 9 States, 2002-2004 ¹

State and Crop Year	Dec 1	Jan 1	Feb 1	Mar 1	Apr 1	May 1	Jun 1	Season
	<i>1,000 Cwt</i>	<i>1,000 Cwt</i>	<i>1,000 Cwt</i>	<i>1,000 Cwt</i>	<i>1,000 Cwt</i>	<i>1,000 Cwt</i>	<i>1,000 Cwt</i>	<i>1,000 Cwt</i>
ID & OR-Mal								
2002	28,380	34,860	41,200	48,600	56,240	63,840	71,280	85,390
2003	24,310	30,730	36,260	43,640	49,570	56,380	63,770	77,530
2004	24,360							
ME ²								
2002	2,230	2,715	3,345	3,905	4,505	5,225	5,905	7,835
2003	1,590	2,085	2,720	3,420	4,095	4,740	5,400	7,270
2004	1,555							
WA & OR-Oth								
2002	33,680	39,490	44,190	51,920	58,710	64,300	71,480	79,110
2003	32,670	38,520	43,610	51,210	58,500	64,160	72,350	79,800
2004	32,270							
Other Sts ³								
2002	12,675	15,530	18,735	21,780	24,810	27,405	30,655	38,700
2003	13,835	16,505	19,590	22,685	25,920	29,480	32,845	42,160
2004	12,525							
Total								
2002	76,965	92,595	107,470	126,205	144,265	160,770	179,320	211,035
2003	72,405	87,840	102,180	120,955	138,085	154,760	174,365	206,760
2004	70,710							
Dehydrated ⁴								
2002	15,675	19,660	23,710	27,950	31,915	36,105	40,455	48,940
2003	14,250	18,440	22,050	26,090	30,290	34,630	39,070	47,750
2004	13,365							

¹ Total quantity received and used for processing regardless of the State in which the potatoes were produced. Amount excludes quantities used for potato chips in ME, MI, and WI.

² Includes Maine grown potatoes only.

³ CO, MN, NV, ND, and WI.

⁴ Dehydrated products except starch and flour. Included in above totals. Includes CO, ID, NV, ND, OR, WA, and WI.

Fall Potatoes: Production and Stocks, 15 Major States, December 1, 2003-2004 ¹

State	Crop of 2003			Crop of 2004		
	Prod	Stocks Dec 1, 2003	% of Prod	Prod	Stocks Dec 1, 2004	% of Prod
	<i>1,000 Cwt</i>	<i>1,000 Cwt</i>	<i>Percent</i>	<i>1,000 Cwt</i>	<i>1,000 Cwt</i>	<i>Percent</i>
CA	3,528	2,700	77	3,876	3,200	83
CO	23,652	17,500	74	23,148	17,200	74
ID	123,180	86,000	70	131,970	93,500	71
ME	17,030	13,500	79	19,220	15,000	78
MI	15,015	9,200	61	13,650	8,600	63
MN	22,330	14,000	63	18,920	13,000	69
MT	3,339	3,100	93	3,551	3,400	96
NE	9,744	6,500	67	8,938	5,800	65
NY	6,510	2,700	41	5,184	2,900	56
ND	27,440	19,400	71	26,765	19,600	73
OH	1,097	300	27	1,080	200	19
OR	20,991	18,000	86	19,775	17,000	86
PA	3,375	1,900	56	2,530	1,200	47
WA	93,150	51,000	55	93,810	50,000	53
WI	32,800	22,100	67	30,710	21,000	68
15 Sts	403,181	267,900	66	403,127	271,600	67

¹ Stocks include processor holdings and most of the seed to plant following year's crop. Seed usage for all seasons in 2004 totaled 26.4 million cwt.

**Fall Potatoes: Stocks by Type as Percent of Total Stocks,
11 Selected States, December 1, 2003-2004**

State	Potato Types							
	Reds		Round Whites		Long Whites		Russets	
	2003	2004	2003	2004	2003	2004	2003	2004
	<i>Percent</i>	<i>Percent</i>	<i>Percent</i>	<i>Percent</i>	<i>Percent</i>	<i>Percent</i>	<i>Percent</i>	<i>Percent</i>
CO	5	5	2	2			93	93
ID	1	1			3	5	96	94
ME	4	3	46	45	2	3	48	49
MI	1	1	86	89			13	10
MN	14	9	4	4	1	1	81	86
NY	5	5	90	90			5	5
ND	14	13	25	20	7	11	54	56
OR	1	1	1	1		1	98	97
PA	4	2	96	98				
WA	1	1	1	1	6	6	92	92
WI	7	4	29	36			64	60
11 St Avg	4	3	12	12	3	4	81	81

Fall Potatoes: Area Planted and Harvested by State, 2002-2004

State	Area Planted			Area Harvested		
	2002	2003	2004	2002	2003	2004
	<i>1,000 Acres</i>	<i>1,000 Acres</i>	<i>1,000 Acres</i>	<i>1,000 Acres</i>	<i>1,000 Acres</i>	<i>1,000 Acres</i>
CA	8.3	8.3	7.6	8.3	8.3	7.6
CO	71.6	66.3	65.0	71.5	65.7	64.3
ID	375.0	360.0	355.0	373.0	358.0	353.0
10 SW Co	27.0	25.0	25.0	27.0	25.0	25.0
Other ID	348.0	335.0	330.0	346.0	333.0	328.0
IN	2.9	3.8	3.4	2.8	3.7	3.2
ME	64.5	66.0	63.5	64.0	65.5	62.0
MA	3.3	3.0	2.6	3.2	2.7	2.5
MI	46.5	46.0	43.0	45.5	45.5	42.0
MN	62.0	60.0	47.0	57.0	58.0	44.0
MT	10.5	10.7	10.7	10.4	10.6	10.6
NE	22.0	23.5	22.0	21.8	23.2	21.8
NV	7.6	8.3	6.7	7.6	8.0	6.7
NM	4.0	4.0	4.0	4.0	4.0	4.0
NY	22.5	22.2	20.0	22.0	21.7	19.2
ND	118.0	117.0	105.0	102.0	112.0	101.0
OH	4.5	4.5	3.7	4.4	4.3	3.6
OR	50.0	42.8	37.0	49.8	42.6	37.0
Malheur	8.0	5.8	5.2	8.0	5.8	5.2
Other OR	42.0	37.0	31.8	41.8	36.8	31.8
PA	12.5	13.0	12.0	11.5	12.5	11.0
RI	0.5	0.6	0.5	0.5	0.6	0.5
SD ¹	1.1	1.0		1.1	1.0	
UT ¹	0.8	1.0		0.8	1.0	
WA	162.0	163.0	160.0	162.0	162.0	159.0
WI	84.0	81.0	75.0	82.0	80.0	74.0
Total	1,134.1	1,106.0	1,043.7	1,105.2	1,090.9	1,027.0

¹ Estimates discontinued in 2004.

Fall Potatoes: Yield and Production by State, 2002-2004

State	Yield			Production		
	2002	2003	2004	2002	2003	2004
	<i>Cwt</i>	<i>Cwt</i>	<i>Cwt</i>	<i>1,000 Cwt</i>	<i>1,000 Cwt</i>	<i>1,000 Cwt</i>
CA	520	425	510	4,316	3,528	3,876
CO	390	360	360	27,885	23,652	23,148
ID	358	344	374	133,385	123,180	131,970
10 SW Co	455	465	490	12,285	11,625	12,250
Other ID	350	335	365	121,100	111,555	119,720
IN	260	250	350	728	925	1,120
ME	265	260	310	16,960	17,030	19,220
MA	255	265	320	816	716	800
MI	305	330	325	13,878	15,015	13,650
MN	330	385	430	18,810	22,330	18,920
MT	310	315	335	3,224	3,339	3,551
NE	395	420	410	8,611	9,744	8,938
NV	350	415	430	2,660	3,320	2,881
NM	400	400	430	1,600	1,600	1,720
NY	250	300	270	5,500	6,510	5,184
ND	230	245	265	23,460	27,440	26,765
OH	205	255	300	902	1,097	1,080
OR	501	493	534	24,936	20,991	19,775
Malheur	400	415	470	3,200	2,407	2,444
Other OR	520	505	545	21,736	18,584	17,331
PA	185	270	230	2,128	3,375	2,530
RI	235	285	350	118	171	175
SD ¹	300	340		330	340	
UT ¹	305	335		244	335	
WA	570	575	590	92,340	93,150	93,810
WI	375	410	415	30,750	32,800	30,710
Total	374	376	399	413,581	410,588	409,823

¹ Estimates discontinued in 2004.

**Fall Potatoes: Production, December 1 Stocks, and Farm Disposition,
15 Storage States and 23 Fall Season States, 2001-2004 Crop Years**

State	Crop Year	Production	Stocks Dec 1	Total Used For Fall Seed	Farm Disposition		
					Where Grown		Sold
					Seed, Feed, Home Use	Shrinkage and Loss	
		<i>1,000 Cwt</i>	<i>1,000 Cwt</i>	<i>1,000 Cwt</i>	<i>1,000 Cwt</i>	<i>1,000 Cwt</i>	<i>1,000 Cwt</i>
CA	2001	1,513	1,200	226	3	150	1,360
	2002	4,316	3,400	208	16	399	3,901
	2003	3,528	2,700	169	1	343	3,184
	2004	3,876	3,200				
CO	2001	21,357	15,600	1,790	1,465	1,887	18,005
	2002	27,885	20,500	1,724	1,460	2,845	23,580
	2003	23,652	17,500	1,625	1,410	2,507	19,735
	2004	23,148	17,200				
ID	2001	120,200	87,500	8,250	1,230	8,261	110,709
	2002	133,385	92,000	7,920	1,440	8,650	123,295
	2003	123,180	86,000	7,700	1,463	8,900	112,817
	2004	131,970	93,500				
ME	2001	16,430	12,200	1,355	301	849	15,280
	2002	16,960	12,600	1,386	310	790	15,860
	2003	17,030	13,500	1,245	215	2,430	14,385
	2004	19,220	15,000				
MI	2001	13,950	8,200	1,181	245	945	12,760
	2002	13,878	7,900	1,099	205	1,400	12,273
	2003	15,015	9,200	1,060	265	1,680	13,070
	2004	13,650	8,600				
MN	2001	18,425	12,000	1,178	190	1,700	16,535
	2002	18,810	12,000	1,080	130	1,400	17,280
	2003	22,330	14,000	1,060	130	1,800	20,400
	2004	18,920	13,000				
MT	2001	3,296	3,000	263	152	188	2,956
	2002	3,224	3,100	257	145	142	2,937
	2003	3,339	3,100	268	160	270	2,909
	2004	3,551	3,400				
NE	2001	8,400	4,850	570	153	720	7,527
	2002	8,611	5,500	611	149	612	7,850
	2003	9,744	6,500	616	194	840	8,710
	2004	8,938	5,800				
NY	2001	5,942	2,400	495	100	502	5,340
	2002	5,500	2,400	488	100	350	5,050
	2003	6,510	2,700	440	100	520	5,890
	2004	5,184	2,900				

--continued

**Fall Potatoes: Production, December 1 Stocks, and Farm Disposition,
15 States and Fall Season, 2001-04 (continued)**

State	Crop Year	Production	Stocks Dec 1	Total Used For Fall Seed	Farm Disposition		
					Where Grown		Sold
					Seed, Feed, Home Use	Shrinkage and Loss	
		<i>1,000 Cwt</i>	<i>1,000 Cwt</i>	<i>1,000 Cwt</i>	<i>1,000 Cwt</i>	<i>1,000 Cwt</i>	<i>1,000 Cwt</i>
ND	2001	26,400	19,500	2,301	320	3,960	22,120
	2002	23,460	16,000	2,223	450	2,650	20,360
	2003	27,440	19,400	1,805	390	3,700	23,350
	2004	26,765	19,600				
OH	2001	1,097	300	95	3	36	1,058
	2002	902	85	95	2	11	889
	2003	1,097	300	76	6	40	1,051
	2004	1,080	200				
OR	2001	20,730	17,500	1,200	175	1,059	19,496
	2002	24,936	17,500	1,021	266	1,386	23,284
	2003	20,991	18,000	955	275	1,290	19,426
	2004	19,775	17,000				
PA	2001	2,938	1,800	238	59	120	2,759
	2002	2,128	1,300	238	36	78	2,014
	2003	3,375	1,900	228	42	287	3,046
	2004	2,530	1,200				
WA	2001	94,400	53,000	3,888	300	7,000	87,100
	2002	92,340	50,000	3,912	300	6,500	85,540
	2003	93,150	51,000	4,000	280	5,600	87,270
	2004	93,810	50,000				
WI	2001	31,955	19,700	1,596	278	1,947	29,730
	2002	30,750	20,200	1,782	265	1,738	28,747
	2003	32,800	22,100	1,650	300	2,750	29,750
	2004	30,710	21,000				
15 Sts	2001	387,033	258,750	24,626	4,974	29,324	352,735
	2002	407,085	264,485	24,044	5,274	28,951	372,860
	2003	403,181	267,900	22,897	5,231	32,957	364,993
	2004	403,127	271,600				
Fall Sts	2001	393,631		25,043	5,039	29,780	358,812
	2002	413,581		24,496	5,399	29,386	378,796
	2003	410,588		23,249	5,254	33,579	371,755
	2004	409,823					

NOTE: Stocks are defined as the quantity (whether sold or not) remaining in storage for all purposes and uses, including seed potatoes that are not yet moved, and shrinkage, waste, and other losses that occur after the date of each report. Sales of fall potatoes for all purposes for the past 5 years averaged 90.8 percent of the total fall production. Shrinkage, loss, and home use account for the remaining 9.2 percent.

**Potatoes: Production, Sold, Not Sold, and Kept for Seed,
United States, 1999-2004**

Crop Year	Fall Potatoes					Amount Used for Seed All Seasons Following year <i>1,000 Cwt</i>
	Production <i>1,000 Cwt</i>	Sold <i>1,000 Cwt</i>	Sold as % of Prod <i>Percent</i>	Not Sold <i>1,000 Cwt</i>	Not Sold as % of Prod <i>Percent</i>	
1999	429,847	390,210	90.8	39,637	9.2	29,580
2000	467,529	420,301	89.9	47,228	10.1	27,137
2001	393,631	358,812	91.2	34,819	8.8	28,625
2002	413,581	378,796	91.6	34,785	8.4	28,149
2003	410,588	371,755	90.5	38,833	9.5	26,360
2004	409,823					

Potatoes: Shrinkage and Loss, 15 Fall Storage States, 2001-2004

Crop Year	To Dec 1 <i>Million Cwt</i>	To Jan 1 <i>Million Cwt</i>	To Feb 1 <i>Million Cwt</i>	To Mar 1 <i>Million Cwt</i>	To Apr 1 <i>Million Cwt</i>	To May 1 <i>Million Cwt</i>	Total Jun 1 <i>Million Cwt</i>	Season <i>Million Cwt</i>
2001	14.8	17.4	19.8	21.8	23.6	25.1	26.7	29.3
2002	15.5	18.2	20.5	22.4	24.2	25.8	27.2	29.0
2003	15.0	17.4	20.5	22.6	25.4	27.5	29.9	33.0
2004	16.8							

2004 Potato Objective Yield Survey

The National Agricultural Statistics Service conducted potato objective yield surveys in the 7 major fall producing States in 2004. These 7 States account for 83 percent of the fall potato production. Sample plots were located in potato fields that were selected on a random basis using a scientifically designed sampling procedure. Field workers recorded counts and measurements. Survey data from the objective yield counts are presented in the following two tables. They are provided to show information about the crop and trends in production.

Potatoes: Harvest Loss by Type, Seven Objective Yield States, 2003-2004 ^{1 2}

State	Crop Year	Reds	Whites	Russets	All Types
		<i>Cwt per Acre</i>	<i>Cwt per Acre</i>	<i>Cwt per Acre</i>	<i>Cwt per Acre</i>
ID	2003	18	30	27	27
	2004			25	25
ME	2003		15	22	17
	2004		23	30	25
MN	2003	17	22	29	24
	2004	28	21	27	26
ND	2003	10	24	26	24
	2004		21	32	25
OR	2003		12	19	17
	2004		14	30	27
WA	2003		23	34	31
	2004		14	26	24
WI	2003		18	14	16
	2004		10	24	18

¹ Potatoes left in the field at time of harvest. Based on counts in potato fields selected for postharvest samples.

² Missing data represents insufficient number of samples.

Potatoes: Number of Hills by Type, Seven Objective Yield States, 2003-2004 ^{1 2}

State	Crop Year	Reds		Whites		Russets	
		Number of Samples	Avg No. Hills per Acre	Number of Samples	Avg No. Hills per Acre	Number of Samples	Avg No. Hills per Acre
ID	2003	4	14,819	9	12,621	268	12,480
	2004	4	16,372	13	12,747	259	12,628
ME	2003	4	13,060	84	13,235	66	9,731
	2004	6	12,598	77	13,495	62	10,012
MN	2003	47	13,364	13	11,642	81	11,458
	2004	34	13,649	18	11,700	82	12,601
ND	2003	23	10,653	50	10,055	64	11,106
	2004	19	11,435	58	11,134	68	12,007
OR	2003			32	13,267	75	13,928
	2004	3	9,585	19	14,917	79	13,995
WA	2003	10	15,489	29	14,570	133	14,931
	2004	6	17,155	26	16,739	146	15,306
WI	2003	9	15,404	49	14,218	63	12,091
	2004	11	13,513	41	14,554	68	12,559

¹ Based on row measurements and counts in potato fields selected for objective yield samples.

² Missing data represents insufficient number of samples.

Potato Size and Grade

Size and grade measurements came from potatoes harvested in the objective yield survey sample plots. Potatoes were harvested from six hills per sample randomly selected in each State using a scientifically designed sampling procedure. Potatoes were sent to laboratories for sizing and grading according to accepted U.S. fresh grading standards. The following tables contain percent measurements as they actually occurred.

Grading Categories of Potatoes ¹

Type and State	No. 1 2 Inch Minimum ²		No. 2 or Processing Usable 1 1/2 Inch Minimum ³		Cull ⁴		Total	
	2003	2004	2003	2004	2003	2004	2003	2004
	<i>Percent</i>	<i>Percent</i>	<i>Percent</i>	<i>Percent</i>	<i>Percent</i>	<i>Percent</i>	<i>Percent</i>	<i>Percent</i>
Round Red Potatoes								
MN	73.6	81.0	21.8	14.6	4.6	4.4	100.0	100.0
Round White Potatoes								
ME ⁵	77.4	85.5	10.7	7.9	11.9	6.6	100.0	100.0
ND	82.1	86.4	11.9	8.8	6.0	4.8	100.0	100.0
WI	80.4	80.0	19.4	19.9	0.2	0.1	100.0	100.0
Long Potatoes: (Russet and Shepody)								
ID ⁶	69.7	78.6	29.4	20.9	0.9	0.5	100.0	100.0
ME ⁵	61.2	70.2	21.7	12.4	17.1	17.4	100.0	100.0
MN	80.1	77.0	17.0	19.9	2.9	3.1	100.0	100.0
ND	73.9	77.8	18.1	17.5	8.0	4.7	100.0	100.0
OR	77.3	78.2	21.8	21.2	0.9	0.6	100.0	100.0
WA	79.1	82.6	19.2	16.7	1.7	0.7	100.0	100.0
WI	83.8	79.9	16.2	20.0		0.1	100.0	100.0

¹ Gross yield basis.

² Potatoes which meet the requirements for US #1, as stated in United States Standards for Grades of Potatoes, United States Department of Agriculture, Agricultural Marketing Service.

³ Potatoes which meet the requirements for US #2, as stated in United States Standards for Grades of Potatoes, United States Department of Agriculture, Agricultural Marketing Service.

⁴ Potatoes not meeting the requirements for US #1 or US #2, as stated in United States Standards for Grades of Potatoes, United States Department of Agriculture, Agricultural Marketing Service.

⁵ Percent of net yield - adjusted for field loss.

⁶ Russets only.

Round Potatoes: Size Categories ¹

Type State and Year	1 1/2	1 7/8	2	2 1/4	2 1/2	3 1/2	4 Inch and over	Total
	- 1 7/8	- 2	- 2 1/4	- 2 1/2	- 3 1/2	- 4		
	Inches							
	<i>Percent</i>	<i>Percent</i>	<i>Percent</i>	<i>Percent</i>	<i>Percent</i>	<i>Percent</i>	<i>Percent</i>	<i>Percent</i>
2003								
Red Potatoes								
MN	7.8	6.0	15.5	21.9	47.4	1.4		100.0
White Potatoes								
ME ²	3.1	4.2	13.9	19.7	55.6	3.1	0.4	100.0
ND	5.1	4.7	11.8	14.2	58.7	3.0	2.5	100.0
WI	4.0	2.9	10.6	17.4	61.7	3.1	0.3	100.0
2004								
Red Potatoes								
MN	6.9	6.1	14.5	18.6	52.5	1.4		100.0
White Potatoes								
ME ²	1.7	3.0	9.8	16.2	63.2	5.7	0.4	100.0
ND	4.1	3.8	11.0	19.3	55.0	5.6	1.2	100.0
WI	3.6	2.8	8.9	13.7	64.7	5.6	0.7	100.0

¹ Gross yield basis.

² Percent of net yield - adjusted for field loss.

Maine Long Potatoes (Russet & Shepody): Size Categories ¹

Crop Year	1 1/2 -1 7/8	1 7/8 -2	2 in. or 4-6	6-8	8-10	10-12	12-14	14 and Over	Total
	Inches			Ounce					
	<i>Percent</i>	<i>Percent</i>	<i>Percent</i>	<i>Percent</i>	<i>Percent</i>	<i>Percent</i>	<i>Percent</i>	<i>Percent</i>	<i>Percent</i>
2003	9.1	7.5	32.9	21.4	12.5	7.4	5.2	4.0	100.0
2004	2.8	3.7	26.5	21.0	15.2	10.3	6.0	14.5	100.0

¹ Percent of net yield - adjusted for field loss.

Long Potatoes (Russet & Shepody): Size Categories ¹

State and Year	1 1/2 -1 5/8	1 5/8 -1 7/8	1 7/8 -2	2 in. or 4-6	6	7	8	9	10	11	12	13	14 and Over	Total
	Inches				Ounce									
	<i>Percent</i>	<i>Percent</i>	<i>Percent</i>	<i>Percent</i>	<i>Percent</i>	<i>Percent</i>	<i>Percent</i>	<i>Percent</i>	<i>Percent</i>	<i>Percent</i>	<i>Percent</i>	<i>Percent</i>	<i>Percent</i>	<i>Percent</i>
2003														
ID ²	2.2	8.6	6.2	28.8	9.7	8.8	6.5	5.9	4.6	3.9	3.5	2.4	8.9	100.0
MN	1.6	6.4	4.9	28.4	11.8	10.7	9.1	7.1	5.7	3.7	3.4	1.7	5.5	100.0
ND	1.1	6.3	3.8	23.5	11.1	10.9	8.5	7.7	6.0	4.8	4.3	2.4	9.6	100.0
OR	1.7	4.7	3.6	22.9	9.9	9.2	8.0	5.9	6.1	5.0	4.1	3.3	15.6	100.0
WA	1.0	3.9	3.8	21.7	8.5	8.5	8.4	7.7	5.8	5.6	4.6	3.7	16.8	100.0
WI	3.0	3.4	4.5	30.9	11.4	9.9	8.3	7.0	4.4	3.9	3.1	2.5	7.7	100.0
2004														
ID ²	1.8	6.7	4.9	26.8	9.2	8.7	7.8	6.1	5.2	4.4	3.5	2.7	12.2	100.0
MN	1.8	8.8	7.2	35.0	11.6	9.9	7.8	4.9	3.8	2.4	1.9	1.1	3.8	100.0
ND	1.1	6.9	5.5	26.1	10.7	9.9	8.7	6.7	5.9	3.7	3.6	2.3	8.9	100.0
OR	1.8	4.3	3.1	20.2	9.3	9.4	8.5	8.0	6.3	5.4	4.4	2.9	16.4	100.0
WA	0.9	3.7	3.0	21.7	10.0	9.0	8.2	7.0	6.3	5.7	4.8	4.0	15.7	100.0
WI	4.5	4.3	5.9	32.4	12.2	9.7	8.2	6.5	3.9	3.7	2.4	2.1	4.2	100.0

¹ Gross yield basis.

² Russets only.

**Fall Potatoes: Farm Marketings, Selected States,
2001-2003 Marketing Years**

State	Crop Year	Jul	Aug	Sep	Oct	Nov	Dec	Jan	Feb	Mar	Apr	May	Jun	Jul
		<i>Percent</i>	<i>Percent</i>	<i>Percent</i>	<i>Percent</i>	<i>Percent</i>	<i>Percent</i>	<i>Percent</i>	<i>Percent</i>	<i>Percent</i>	<i>Percent</i>	<i>Percent</i>	<i>Percent</i>	<i>Percent</i>
CA	2001					21	6	20	13	20	20			
	2002				11	11	11	10	10	10	13	8	9	7
	2003				13	12	15	14	9	8	10	7	12	
CO	2001			5	10	11	12	12	9	11	10	11	7	2
	2002			4	9	10	10	11	9	11	11	10	7	8
	2003			6	8	9	10	11	9	12	14	8	7	6
ID	2001		3	12	13	8	6	7	9	10	10	10	6	6
	2002		4	8	11	10	7	8	8	10	11	10	7	6
	2003		4	8	10	11	8	7	8	10	11	11	6	6
ME	2001		1	9	10	9	9	12	11	11	12	8	5	3
	2002		2	7	11	9	8	10	9	10	15	10	5	4
	2003		1	5	11	8	9	10	10	11	15	10	6	4
MI	2001	3	7	8	12	11	12	13	11	11	8	3	1	
	2002	4	7	11	12	13	8	6	8	12	13	6		
	2003	1	7	8	11	11	11	10	8	13	12	8		
MN	2001		10	9	7	7	6	7	9	10	10	9	8	8
	2002		9	9	9	7	8	7	9	7	10	12	8	5
	2003		9	10	10	9	6	5	6	9	10	9	9	8
NY	2001		4	20	18	17	15	9	7	6	4			
	2002		8	17	16	14	11	14	10	7	3			
	2003		1	8	29	20	17	8	7	6	4			
ND	2001			18	10	12	7	8	7	7	14	11	6	
	2002		2	22	10	9	6	9	4	8	10	13	5	2
	2003			23	10	6	7	6	9	7	11	10	9	2
OR	2001		7	13	21	8	6	5	7	7	8	8	7	3
	2002		11	9	21	9	9	6	9	8	6	7	3	2
	2003		10	9	19	9	8	7	7	7	8	8	5	3
PA	2001		17	16	15	12	12	10	8	7	2	1		
	2002		18	14	17	14	10	9	6	5	4	3		
	2003		15	18	14	11	10	10	9	6	5	2		
WA	2001		11	13	25	7	6	5	7	7	6	7	5	1
	2002		17	12	19	9	5	5	7	6	6	7	6	1
	2003		16	12	22	7	6	5	7	6	6	7	5	1
WI	2001	1	6	13	14	12	10	9	8	10	11	5	1	
	2002	1	7	12	12	12	9	9	8	12	10	6	2	
	2003	1	6	12	12	12	10	9	10	10	9	7	2	

December Potato Stocks Up 1 Percent from Last Year

The 15 major potato States held 272 million cwt of potatoes in storage December 1, 2004, up 1 percent from last year and 3 percent above 2002. Potatoes in storage account for 67 percent of the 2004 fall storage States' production, 1 percentage point above last year. Stocks by type were 3 percent red, 12 percent round white, 4 percent long white (Shepody), and 81 percent russets, with fewer reds and more long whites than a year ago.

Disappearance of 132 million cwt from the start of harvest to December 1, is down 3 percent from last year and 8 percent below two years ago. Shrink and loss, at 16.8 million cwt, is up 12 percent from last year and 8 percent above the same date in 2002.

Processors used 70.7 million cwt of 2004 crop potatoes so far this season, down 2 percent from a year ago and 8 percent below two years ago. Idaho and Malheur County, Oregon, processing increased less than 1 percent, while Washington and the rest of Oregon processed 1 percent less of the 2004 crop than of the 2003 crop. Dehydrating usage accounts for 13.4 million cwt of the total processing, down 6 percent from last year and 15 percent below the same date in 2002.

Western States held 184 million cwt of potatoes in storage on December 1, up 3 percent from last year but 1 percent below two years ago. Idaho's potato stocks are up 9 percent from last year, California increased 19 percent, and Montana's storages held 10 percent more. Potato sheds in Washington and Colorado both stored 2 percent less than last year and Oregon sheds were down 6 percent.

Central States accounted for 68.2 million cwt of potato stocks on December 1, down 5 percent from last year but 11 percent above two years ago. Wisconsin potato sheds stored 5 percent less than last year, Minnesota and Michigan stocks both decreased 7 percent, Nebraska went down 11 percent, and Ohio's potato sheds stored 33 percent less. North Dakota's sheds are the only ones in the central States storing more potatoes than last year with an increase of 1 percent.

Eastern States stored 19.1 million cwt of potatoes on December 1, up 6 percent from last year and 17 percent above two years ago. Maine's stocks are up 11 percent from last year, while New York stocks increased 7 percent. Pennsylvania's sheds decreased 37 percent from a year ago.

Fall Potato Production Up Less than 1 Percent from November

Production of fall potatoes for 2004 is forecast at 410 million cwt, up less than 1 percent from last month but virtually unchanged from last year for comparable States. South Dakota and Utah were dropped from the program starting in 2004. Area harvested, at 1.03 million acres, is up less than 1 percent from November but 6 percent below last year. The average yield is forecast at 399 cwt per acre, 14 cwt above last month and 23 cwt above last year. If realized, this will be a record high yield, 7 cwt above the previous record set in 2000.

Western States production is forecast at 281 million cwt, virtually unchanged from the November forecast but up 3 percent from last year for comparable States. Acreage harvested, at 642,200 acres, decreased 3 percent from last year, but the average yield of 437 cwt per acre is up 23 cwt from 2003. Record high yields in Idaho increased production 7 percent from the previous year. Favorable growing conditions during the season contributed to the good size and quality of the tubers. Production in Washington went up 1 percent from last year. Colorado's production decreased 2 percent as more acres were abandoned due to higher disease rates and water management issues. Oregon growers expect to harvest 19.8 million cwt of potatoes, down 6 percent from last year. This decrease is due to a 13 percent reduction in harvested acres but yields are forecast at 41 cwt above last season. California's production is up 10 percent from last year. Ideal weather and excellent soil conditions increased yields 85 cwt from 2003 to 510 cwt per acre, more than offsetting the decrease in harvested acres. Growers in Montana expect production to be 6 percent above the 2003 crop. Nevada's production is expected to decrease 13 percent. New Mexico production is expected to be 8 percent above last season.

Central States production is forecast at 101 million cwt, up 1 percent from the November forecast but down 7 percent from last year for comparable States. Harvested area, estimated at 289,600 acres, is up 1 percent from November but 11 percent below a year ago. Average yields, at 349 cwt per acre, are up 2 cwt from last month and 14 cwt above a year ago. Production in Michigan is 9 percent below 2003 and Minnesota's production is down 15 percent from last year. A record high yield of 430 cwt per acre in Minnesota does not make up for the 24 percent decrease in harvested acres. Due to very wet spring conditions producers planted less potato acreage and reported higher rates of abandonment in Minnesota and Michigan. However, moderate summer temperatures led to good yields. Growers in North Dakota expect a 2 percent decrease from last season. North Dakota growers also expect a record high yield of 265 cwt per acre, 20 cwt above the previous record set in 2003. Indiana's production increased 21 percent from last year. Wisconsin growers are expecting a record high yield of 415 cwt per acre, 5 cwt above last year. However, production is expected to decrease 6 percent due to fewer harvested acres. Nebraska growers expect production to decrease 8 percent and Ohio 2 percent.

Eastern States production is forecast at 27.9 million cwt, up 2 percent from the November forecast and up less than 1 percent from last year. Area for harvest totaled 95,200 acres, up 1 percent from last month but 8 percent below last year. Average yield, at 293 cwt per acre, is up 4 cwt from November and 23 cwt above last season. Heavy rains late in the season drowned out low lying fields in Maine, New York, and Pennsylvania, resulting in quality problems and higher rates of abandonment. Record high yields in Maine and Massachusetts more than offset lower harvested acres. A 13 percent production increase from last year is expected in Maine. Massachusetts production is up 12 percent from a year ago. New York production is expected to decrease 20 percent from 2003. Pennsylvania growers expect a 25 percent decrease from last year. Rhode Island production is expected to increase 2 percent from 2003.

Reliability of December 1 Stocks Estimates

To assist users in evaluating the reliability of the December 1 stocks estimate, the “Root Mean Square Error,” a statistical measure based on past performance, is computed. The deviation between the December 1 stocks estimate and the final estimate is expressed as a percentage of the final estimate. The average of squared percentage deviations for the latest 20-year period is computed. The square root of the average becomes statistically the “Root Mean Square Error.” Probability statements can be made concerning expected differences in the current estimate relative to the final end-of-season estimate, assuming that factors affecting this year’s estimate are not different from those influencing recent years.

The "Root Mean Square Error" for the December 1 stocks estimate is 2.4 percent. This means that chances are 2 out of 3 that the current estimate of 272 million cwt will not be above or below the final estimate by more than 2.4 percent or approximately 6.5 million cwt. Chances are 9 out of 10 (90 percent confidence level) that the difference will not exceed 4.1 percent or approximately 11.1 million cwt.

The 10-year (1994-2003) record of differences between the December 1 stocks estimates and the final estimates averaged 3.2 million cwt, ranging from 7.8 million cwt above the final to 9.2 million cwt below the final. During the 10-year period, the December 1 estimate has been below the final estimate 7 years and above 3 years.

Reliability of December 1 Fall Potato Estimates

Estimate	Root Mean Square Error		Ten Year Record of Difference Between Dec 1 and Final Estimate					
	Percent	90% Confidence Level		Quantity			Number of Years	
		Percent	Quantity	Avg	Small	Large	Below Final	Above Final
			<i>Million Cwt</i>	<i>Million Cwt</i>	<i>Million Cwt</i>	<i>Million Cwt</i>		
Stocks	2.4	4.1	11.14	3.23	0.11	9.20	7	3
Production	1.6	2.7	11.07	3.80	0.40	10.27	7	3

Fall Potato Stocks: Preliminary and Final December 1 Stocks, United States, 1994-2004

Crop Year	Preliminary Stocks	% of Final	Final Stocks
	<i>1,000 Cwt</i>	<i>Percent</i>	<i>1,000 Cwt</i>
1994	264,090	96.6	273,290
1995	252,030	98.2	256,710
1996	291,650	98.8	295,100
1997	274,250	98.4	278,830
1998	281,020	100.0	280,910
1999	274,870	99.9	275,100
2000	309,520	99.7	310,300
2001	266,520	103.0	258,750
2002	265,190	100.3	264,485
2003	267,160	99.7	267,900
2004	271,600		

ACCESS TO REPORTS!!

For your convenience, there are several ways to obtain NASS reports, data products, and services:

INTERNET ACCESS

All NASS reports are available free of charge on the worldwide Internet. For access, connect to the Internet and go to the NASS Home Page at: www.usda.gov/nass/. Select "Today's Reports" or Publications and then Reports Calendar or Publications and then Search, by Title or Subject.

E-MAIL SUBSCRIPTION

All NASS reports are available by subscription free of charge direct to your e-mail address. Starting with the NASS Home Page at www.usda.gov/nass/, click on **Publications**, then click on the **Subscribe by E-mail** button which takes you to the page describing e-mail delivery of reports. Finally, click on **Go to the Subscription Page** and follow the instructions.

PRINTED REPORTS OR DATA PRODUCTS

CALL OUR TOLL-FREE ORDER DESK: 800-999-6779 (U.S. and Canada)
Other areas, please call 703-605-6220 FAX: 703-605-6900
(Visa, MasterCard, check, or money order acceptable for payment.)

ASSISTANCE

For **assistance** with general agricultural statistics or further information about NASS or its products or services, contact the **Agricultural Statistics Hotline** at **800-727-9540**, 7:30 a.m. to 4:00 p.m. ET, or e-mail: nass@nass.usda.gov.

The United States Department of Agriculture (USDA) prohibits discrimination in all its programs on the basis of race, color, national origin, gender, religion, age, disability, political beliefs, sexual orientation, and marital or family status. (Not all prohibited bases apply to all programs.) Persons with disabilities who require alternative means for communication of program information (braille, large print, audiotape, etc.) should contact the USDA's TARGET Center at 202-720-2600 (voice and TDD).

To file a complaint of discrimination, write USDA, Director, Office of Civil Rights, Room 326-W, Whitten Building, 1400 Independence Avenue, SW, Washington, D.C., 20250-9410, or call 202-720-5964 (voice or TDD). USDA is an equal opportunity provider and employer.