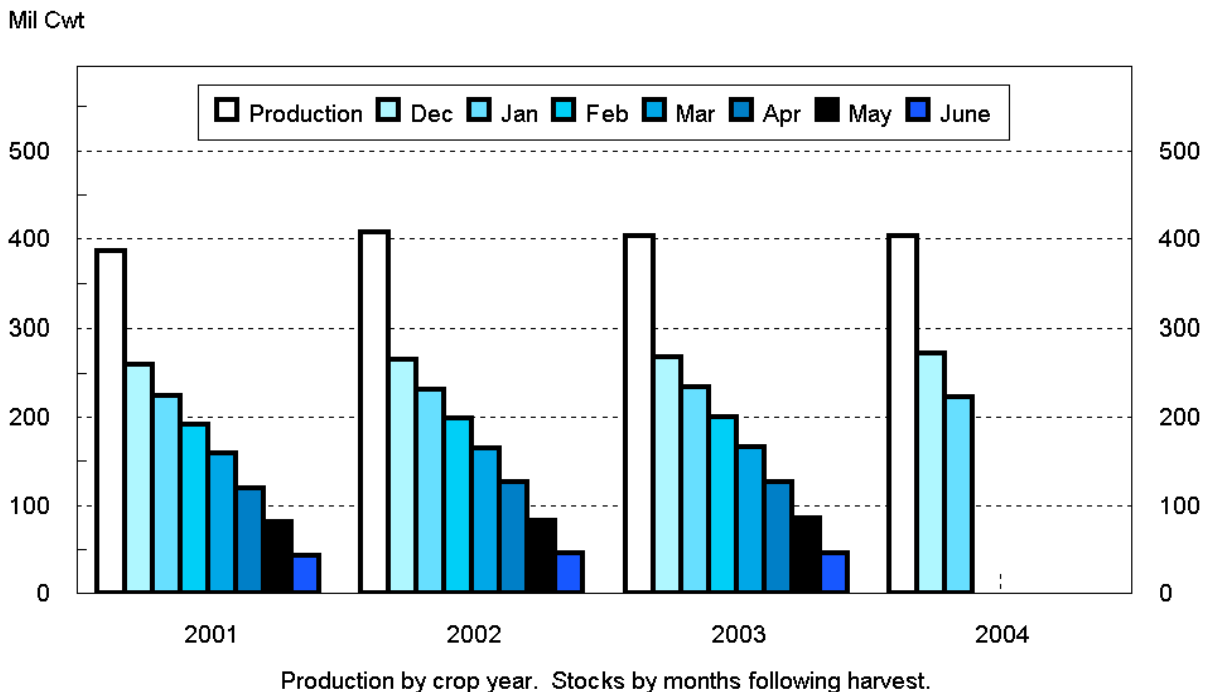


Released January 14, 2005, by the National Agricultural Statistics Service (NASS), Agricultural Statistics Board, U.S. Department of Agriculture. For information on *Potato Stocks* call Cathy Scherrer at (202) 720-4285, office hours 7:30 a.m. to 4:00 p.m. ET.

Potato Stocks Up 2 Percent from Last Year

The 15 major potato States held 238 million cwt of potatoes in storage January 1, 2005, up 2 percent from last year and 3 percent above 2003. Potatoes in storage account for 59 percent of the 2004 fall storage States' production, 1 percentage point above last year. Stocks by type show a smaller percentage of reds and round whites but a larger percentage of long whites and russets than a year ago. Disappearance of 165 million cwt of potatoes is down 3 percent from last year and 6 percent below two years ago. Shrink and loss, at 20.0 million cwt so far this season, is up 15 percent from last year and 10 percent above the same date in 2003. Processors in the 9 major States used 86.0 million cwt of potatoes this season, down 2 percent from a year ago and 7 percent below two years ago. Dehydrating usage accounts for 17.0 million cwt of the total processing, down 8 percent from last year and 13 percent below the same date in 2003. December 1, 2004, stocks were revised up fractionally, with changes in Nebraska, New York, and Pennsylvania.

Fall Potatoes: Production and Stocks 15 Storage States



Fall Potatoes: Production and Stocks, 15 Major States, 1995-2004

Crop Year	Production	Dec 1	Jan 1	Feb 1	Mar 1	Apr 1	May 1	Jun 1 ¹
	<i>1,000 Cwt</i>	<i>1,000 Cwt</i>	<i>1,000 Cwt</i>	<i>1,000 Cwt</i>	<i>1,000 Cwt</i>	<i>1,000 Cwt</i>	<i>1,000 Cwt</i>	<i>1,000 Cwt</i>
1995	394,785	256,710	223,550	189,360	156,020	115,855	75,870	
1996	443,704	295,100	261,320	226,080	189,210	147,635	103,210	
1997	413,513	278,830	246,550	212,562	175,870	134,190	92,840	
1998	423,170	280,910	246,230	209,640	173,650	131,220	87,895	50,270
1999	420,567	275,100	239,910	207,150	169,620	128,410	86,915	47,220
2000	458,827	310,300	275,270	234,260	197,670	153,520	109,160	61,270
2001	387,033	258,750	224,680	192,090	158,590	119,950	81,200	42,990
2002	407,085	264,485	231,490	199,020	165,210	125,770	83,040	45,880
2003	403,181	267,900	233,590	200,230	166,280	126,110	85,000	46,020
2004 ²	403,327	271,800	238,220					

¹ Data not available prior to 1998.

² December 1, 2004, stocks revised.

Potatoes: Quantity Used for Processing, 9 States, 2002-2004 ¹

State and Crop Year	Dec 1	Jan 1	Feb 1	Mar 1	Apr 1	May 1	Jun 1	Season
	<i>1,000 Cwt</i>	<i>1,000 Cwt</i>	<i>1,000 Cwt</i>	<i>1,000 Cwt</i>	<i>1,000 Cwt</i>	<i>1,000 Cwt</i>	<i>1,000 Cwt</i>	<i>1,000 Cwt</i>
ID & OR-Mal								
2002	28,380	34,860	41,200	48,600	56,240	63,840	71,280	85,390
2003	24,310	30,730	36,260	43,640	49,570	56,380	63,770	77,530
2004	24,360	30,840						
ME ²								
2002	2,230	2,715	3,345	3,905	4,505	5,225	5,905	7,835
2003	1,590	2,085	2,720	3,420	4,095	4,740	5,400	7,270
2004	1,555	1,985						
WA & OR-Oth								
2002	33,680	39,490	44,190	51,920	58,710	64,300	71,480	79,110
2003	32,670	38,520	43,610	51,210	58,500	64,160	72,350	79,800
2004 ³	32,305	38,130						
Other Sts ⁴								
2002	12,675	15,530	18,735	21,780	24,810	27,405	30,655	38,700
2003	13,835	16,505	19,590	22,685	25,920	29,480	32,845	42,160
2004	12,525	15,035						
Total								
2002	76,965	92,595	107,470	126,205	144,265	160,770	179,320	211,035
2003	72,405	87,840	102,180	120,955	138,085	154,760	174,365	206,760
2004 ³	70,745	85,990						
Dehydrated ⁵								
2002	15,675	19,660	23,710	27,950	31,915	36,105	40,455	48,940
2003	14,250	18,440	22,050	26,090	30,290	34,630	39,070	47,750
2004	13,365	17,015						

¹ Total quantity received and used for processing regardless of the State in which the potatoes were produced. Amount excludes quantities used for potato chips in ME, MI, and WI.

² Includes Maine grown potatoes only.

³ December revised.

⁴ CO, MN, NV, ND, and WI.

⁵ Dehydrated products except starch and flour. Included in above totals. Includes CO, ID, NV, ND, OR, WA, and WI.

Fall Potatoes: Production and Stocks on January 1, 2004-2005 ¹

State	Crop of 2003			Crop of 2004			
	Prod	Stocks Jan 1, 2004	% of Prod	Prod	Stocks Dec 1, 2004	Stocks Jan 1, 2005	Jan % of Prod
	<i>1,000 Cwt</i>	<i>1,000 Cwt</i>	<i>Percent</i>	<i>1,000 Cwt</i>	<i>1,000 Cwt</i>	<i>1,000 Cwt</i>	<i>Percent</i>
CA	3,528	2,100	60	3,876	3,200	2,800	72
CO	23,652	15,300	65	23,148	17,200	15,000	65
ID	123,180	76,500	62	131,970	93,500	84,500	64
ME	17,030	12,100	71	19,220	15,000	12,800	67
MI	15,015	7,700	51	13,650	8,600	6,900	51
MN	22,330	12,400	56	18,920	13,000	11,600	61
MT	3,339	3,000	90	3,551	3,400	3,300	93
NE ²	9,744	5,600	57	9,288	6,300	5,300	57
NY ²	6,510	1,600	25	5,184	2,500	1,800	35
ND	27,440	17,300	63	26,765	19,600	17,500	65
OH	1,097	190	17	1,080	200	120	11
OR	20,991	15,800	75	19,775	17,000	14,500	73
PA ²	3,375	1,500	44	2,640	1,300	1,100	42
WA	93,150	44,000	47	93,810	50,000	43,000	46
WI	32,800	18,500	56	30,450	21,000	18,000	59
15 States ²	403,181	233,590	58	403,327	271,800	238,220	59

¹ Stocks include processor holdings and most of the seed to plant the following year's crop. Seed usage for all seasons in 2004 totaled 26.4 million cwt.

² December 1, 2004, stocks revised.

**Fall Potatoes: Stocks by Type as Percent of Total Stocks,
11 Major States, January 1, 2004-2005**

State	Potato Types											
	Reds			Round Whites			Long Whites			Russets		
	Jan 2004	Dec 2004	Jan 2005	Jan 2004	Dec 2004	Jan 2005	Jan 2004	Dec 2004	Jan 2005	Jan 2004	Dec 2004	Jan 2005
	<i>Percent</i>	<i>Percent</i>	<i>Percent</i>	<i>Percent</i>	<i>Percent</i>	<i>Percent</i>	<i>Percent</i>	<i>Percent</i>	<i>Percent</i>	<i>Percent</i>	<i>Percent</i>	<i>Percent</i>
CO	5	5	5	2	2	2				93	93	93
ID	1	1	1				3	5	5	96	94	94
ME	4	3	3	47	45	42	1	3	1	48	49	54
MI	1	1		88	89	90				11	10	10
MN	12	9	9	5	4	5		1		83	86	86
NY	5	5	5	90	90	90				5	5	5
ND	13	13	11	25	20	16	7	11	10	55	56	63
OR	2	1	1	1	1	1		1	1	97	97	97
PA	4	2	1	96	98	99						
WA	1	1	1		1		4	6	4	95	92	95
WI	3	4	1	34	36	38				63	60	61
11 St Avg	3	3	2	12	12	11	3	4	4	82	81	83

**Fall Potatoes: Production, January 1 Stocks, and Farm Disposition,
15 Storage States and 23 Fall Season States, 2001-2004 Crop Years**

State	Crop Year	Production	Stocks Jan 1	Total Used For Fall Seed	Farm Disposition		
					Where Grown		Sold
					Seed, Feed, Home Use	Shrinkage and Loss	
		<i>1,000 Cwt</i>	<i>1,000 Cwt</i>	<i>1,000 Cwt</i>	<i>1,000 Cwt</i>	<i>1,000 Cwt</i>	<i>1,000 Cwt</i>
CA	2001	1,513	1,100	226	3	150	1,360
	2002	4,316	2,900	208	16	399	3,901
	2003	3,528	2,100	169	1	343	3,184
	2004	3,876	2,800				
CO	2001	21,357	13,300	1,790	1,465	1,887	18,005
	2002	27,885	18,100	1,724	1,460	2,845	23,580
	2003	23,652	15,300	1,625	1,410	2,507	19,735
	2004	23,148	15,000				
ID	2001	120,200	78,000	8,250	1,230	8,261	110,709
	2002	133,385	82,500	7,920	1,440	8,650	123,295
	2003	123,180	76,500	7,700	1,463	8,900	112,817
	2004	131,970	84,500				
ME	2001	16,430	10,800	1,355	301	849	15,280
	2002	16,960	11,200	1,386	310	790	15,860
	2003	17,030	12,100	1,245	215	2,430	14,385
	2004	19,220	12,800				
MI	2001	13,950	6,200	1,181	245	945	12,760
	2002	13,878	6,500	1,099	205	1,400	12,273
	2003	15,015	7,700	1,060	265	1,680	13,070
	2004	13,650	6,900				
MN	2001	18,425	10,800	1,178	190	1,700	16,535
	2002	18,810	10,500	1,080	130	1,400	17,280
	2003	22,330	12,400	1,060	130	1,800	20,400
	2004	18,920	11,600				
MT	2001	3,296	2,780	263	152	188	2,956
	2002	3,224	3,000	257	145	142	2,937
	2003	3,339	3,000	268	160	270	2,909
	2004	3,551	3,300				
NE	2001	8,400	4,050	570	153	720	7,527
	2002	8,611	4,550	611	149	612	7,850
	2003	9,744	5,600	616	194	840	8,710
	2004	9,288	5,300				
NY	2001	5,942	1,500	495	100	502	5,340
	2002	5,500	1,800	488	100	350	5,050
	2003	6,510	1,600	440	100	520	5,890
	2004	5,184	1,800				

--continued

**Fall Potatoes: Production, January 1 Stocks, and Farm Disposition,
15 Storage States and 23 Fall Season States, 2001-2004 Crop Years (continued)**

State	Crop Year	Production	Stocks Jan 1	Total Used For Fall Seed	Farm Disposition		
					Where Grown		Sold
					Seed, Feed, Home Use	Shrinkage and Loss	
		<i>1,000 Cwt</i>	<i>1,000 Cwt</i>	<i>1,000 Cwt</i>	<i>1,000 Cwt</i>	<i>1,000 Cwt</i>	<i>1,000 Cwt</i>
ND	2001	26,400	16,900	2,301	320	3,960	22,120
	2002	23,460	14,000	2,223	450	2,650	20,360
	2003	27,440	17,300	1,805	390	3,700	23,350
	2004	26,765	17,500				
OH	2001	1,097	150	95	3	36	1,058
	2002	902	40	95	2	11	889
	2003	1,097	190	76	6	40	1,051
	2004	1,080	120				
OR	2001	20,730	15,500	1,200	175	1,059	19,496
	2002	24,936	15,000	1,021	266	1,386	23,284
	2003	20,991	15,800	955	275	1,290	19,426
	2004	19,775	14,500				
PA	2001	2,938	1,400	238	59	120	2,759
	2002	2,128	1,000	238	36	78	2,014
	2003	3,375	1,500	228	42	287	3,046
	2004	2,640	1,100				
WA	2001	94,400	46,000	3,888	300	7,000	87,100
	2002	92,340	43,500	3,912	300	6,500	85,540
	2003	93,150	44,000	4,000	280	5,600	87,270
	2004	93,810	43,000				
WI	2001	31,955	16,200	1,596	278	1,947	29,730
	2002	30,750	16,900	1,782	265	1,738	28,747
	2003	32,800	18,500	1,650	300	2,750	29,750
	2004	30,450	18,000				
15 Sts	2001	387,033	224,680	24,626	4,974	29,324	352,735
	2002	407,085	231,490	24,044	5,274	28,951	372,860
	2003	403,181	233,590	22,897	5,231	32,957	364,993
	2004	403,327	238,220				
Fall Sts	2001	393,631		25,043	5,039	29,780	358,812
	2002	413,581		24,496	5,399	29,386	378,796
	2003	410,588		23,249	5,254	33,579	371,755
	2004	410,023					

NOTE: Stocks are defined as the quantity (whether sold or not) remaining in storage for all purposes and uses, including seed potatoes that are not yet moved, and shrinkage, waste, and other losses that occur after the date of each report. Sales of fall potatoes for all purposes for the past 5 years averaged 90.8 percent of the total fall production. Shrinkage, loss, and home use account for the remaining 9.2 percent.

**Potatoes: Production, Sold, Not Sold, and Kept for Seed,
United States, 1999-2004**

Crop Year	Fall Potatoes					Amount Used for Seed All Seasons Following year <i>1,000 Cwt</i>
	Production <i>1,000 Cwt</i>	Sold <i>1,000 Cwt</i>	Sold as % of Prod <i>Percent</i>	Not Sold <i>1,000 Cwt</i>	Not Sold as % of Prod <i>Percent</i>	
1999	429,847	390,210	90.8	39,637	9.2	29,580
2000	467,529	420,301	89.9	47,228	10.1	27,137
2001	393,631	358,812	91.2	34,819	8.8	28,625
2002	413,581	378,796	91.6	34,785	8.4	28,149
2003	410,588	371,755	90.5	38,833	9.5	26,360
2004	410,023					

Potatoes: Shrinkage and Loss, 15 Fall Storage States, 2001-2004

Crop Year	To Dec 1 <i>Million Cwt</i>	To Jan 1 <i>Million Cwt</i>	To Feb 1 <i>Million Cwt</i>	To Mar 1 <i>Million Cwt</i>	To Apr 1 <i>Million Cwt</i>	To May 1 <i>Million Cwt</i>	Total Jun 1 <i>Million Cwt</i>	Season <i>Million Cwt</i>
2001	14.8	17.4	19.8	21.8	23.6	25.1	26.7	29.3
2002	15.5	18.2	20.5	22.4	24.2	25.8	27.2	29.0
2003	15.0	17.4	20.5	22.6	25.4	27.5	29.9	33.0
2004 ¹	16.6	20.0						

¹ December 1, 2004, shrink and loss revised.

**Fall Potatoes: Farm Marketings, Selected States,
2001-2003 Marketing Years**

State	Crop Year	Jul	Aug	Sep	Oct	Nov	Dec	Jan	Feb	Mar	Apr	May	Jun	Jul
		<i>Percent</i>	<i>Percent</i>	<i>Percent</i>	<i>Percent</i>	<i>Percent</i>	<i>Percent</i>	<i>Percent</i>	<i>Percent</i>	<i>Percent</i>	<i>Percent</i>	<i>Percent</i>	<i>Percent</i>	<i>Percent</i>
CA	2001					21	6	20	13	20	20			
	2002				11	11	11	10	10	10	13	8	9	7
	2003				13	12	15	14	9	8	10	7	12	
CO	2001			5	10	11	12	12	9	11	10	11	7	2
	2002			4	9	10	10	11	9	11	11	10	7	8
	2003			6	8	9	10	11	9	12	14	8	7	6
ID	2001		3	12	13	8	6	7	9	10	10	10	6	6
	2002		4	8	11	10	7	8	8	10	11	10	7	6
	2003		4	8	10	11	8	7	8	10	11	11	6	6
ME	2001		1	9	10	9	9	12	11	11	12	8	5	3
	2002		2	7	11	9	8	10	9	10	15	10	5	4
	2003		1	5	11	8	9	10	10	11	15	10	6	4
MI	2001	3	7	8	12	11	12	13	11	11	8	3	1	
	2002	4	7	11	12	13	8	6	8	12	13	6		
	2003	1	7	8	11	11	11	10	8	13	12	8		
MN	2001		10	9	7	7	6	7	9	10	10	9	8	8
	2002		9	9	9	7	8	7	9	7	10	12	8	5
	2003		9	10	10	9	6	5	6	9	10	9	9	8
NY	2001		4	20	18	17	15	9	7	6	4			
	2002		8	17	16	14	11	14	10	7	3			
	2003		1	8	29	20	17	8	7	6	4			
ND	2001			18	10	12	7	8	7	7	14	11	6	
	2002		2	22	10	9	6	9	4	8	10	13	5	2
	2003			23	10	6	7	6	9	7	11	10	9	2
OR	2001		7	13	21	8	6	5	7	7	8	8	7	3
	2002		11	9	21	9	9	6	9	8	6	7	3	2
	2003		10	9	19	9	8	7	7	7	8	8	5	3
PA	2001		17	16	15	12	12	10	8	7	2	1		
	2002		18	14	17	14	10	9	6	5	4	3		
	2003		15	18	14	11	10	10	9	6	5	2		
WA	2001		11	13	25	7	6	5	7	7	6	7	5	1
	2002		17	12	19	9	5	5	7	6	6	7	6	1
	2003		16	12	22	7	6	5	7	6	6	7	5	1
WI	2001	1	6	13	14	12	10	9	8	10	11	5	1	
	2002	1	7	12	12	12	9	9	8	12	10	6	2	
	2003	1	6	12	12	12	10	9	10	10	9	7	2	

January Potato Stocks Up 2 Percent from Last Year

The 15 major potato States held 238 million cwt of potatoes in storage January 1, 2005, up 2 percent from last year and 3 percent above 2003. Potatoes in storage account for 59 percent of the 2004 fall storage States' production, 1 percentage point above last year. Stocks by type were 2 percent red, 11 percent round white, 4 percent long white (Shepody), and 83 percent russets, with a smaller percentage of reds and round whites but a larger percentage of long whites and russets than a year ago.

Disappearance of 165 million cwt from the start of harvest to January 1, is down 3 percent from last year and 6 percent below two years ago. Shrink and loss, at 20.0 million cwt, is up 15 percent from last year and 10 percent above the same date in 2003.

Processors used 86.0 million cwt of 2004 crop potatoes so far this season, down 2 percent from a year ago and 7 percent below two years ago. Idaho and Malheur County, Oregon, processing increased less than 1 percent from a year ago, while Washington and the rest of Oregon processed 1 percent less than last season. December usage, at 15.2 million cwt, is 1 percent below last year and down 2 percent from two years ago. Dehydrating usage accounts for 17.0 million cwt of the total processing, down 8 percent from last year and 13 percent below the same date in 2003.

Western States held 163 million cwt of potatoes in storage on January 1, up 4 percent from last year but 1 percent below two years ago. California's potato stocks are up 33 percent from last year, while Idaho's and Montana's storages both hold 10 percent more. Potato sheds in Oregon are down 8 percent and Washington's and Colorado's sheds both stored 2 percent less than last year.

Central States accounted for 59.4 million cwt of potato stocks on January 1, down 4 percent from last year but 13 percent above two years ago. Ohio's potato stocks are down 37 percent, Michigan potato sheds stored 10 percent less than last year, and Minnesota's stocks decreased 6 percent. Nebraska's potato stocks went down 5 percent and Wisconsin's sheds stored 3 percent less. North Dakota's sheds are the only ones in the Central States storing more potatoes than last year, with an increase of 1 percent.

Eastern States stored 15.7 million cwt of potatoes on January 1, up 3 percent from last year and 12 percent above two years ago. New York's stocks are up 13 percent from last year, while Maine stocks increased 6 percent. Pennsylvania's sheds decreased 27 percent from a year ago.

Reliability of January 1 Stocks Estimates

To assist users in evaluating the reliability of the January 1 stocks estimate, the "Root Mean Square Error," a statistical measure based on past performance, is computed. The deviation between the January 1 stocks estimate and the final estimate is expressed as a percentage of the final estimate. The average of squared percentage deviations for the latest 20-year period is computed. The square root of the average becomes statistically the "Root Mean Square Error." Probability statements can be made concerning expected differences in the current estimate relative to the final end-of-season estimate, assuming that factors affecting this year's estimate are not different from those influencing recent years.

The "Root Mean Square Error" for the January 1 stocks estimate is 2.6 percent. This means that chances are 2 out of 3 that the current estimate of 238 million cwt will not be above or below the final estimate by more than 2.6 percent or approximately 6.2 million cwt. Chances are 9 out of 10 (90 percent confidence level) that the difference will not exceed 4.6 percent or approximately 11.0 million cwt.

The 10-year (1994-2003) record of differences between the January 1 stocks estimates and the final estimates averaged 3.8 million cwt, ranging from 8.7 million cwt above the final to 9.2 million cwt below the final. During the 10-year period, the January 1 estimate has been below the final estimate 7 years and above 3 years.

**Fall Potato Stocks: Preliminary and Final January 1 Stocks,
United States, 1994-2004**

Crop Year	Preliminary Stocks	% of Final	Final Stocks
	<i>1,000 Cwt</i>	<i>Percent</i>	<i>1,000 Cwt</i>
1994	229,350	96.1	238,560
1995	218,970	98.0	223,550
1996	256,520	98.2	261,320
1997	240,850	97.7	246,550
1998	246,220	100.0	246,230
1999	238,160	99.3	239,910
2000	272,960	99.2	275,270
2001	233,420	103.9	224,680
2002	232,140	100.3	231,490
2003	233,880	100.1	233,590
2004	238,220		

ACCESS TO REPORTS!!

For your convenience, there are several ways to obtain NASS reports, data products, and services:

INTERNET ACCESS

All NASS reports are available free of charge on the worldwide Internet. For access, connect to the Internet and go to the NASS Home Page at: www.usda.gov/nass/. Select "Today's Reports" or Publications and then Reports Calendar or Publications and then Search, by Title or Subject.

E-MAIL SUBSCRIPTION

All NASS reports are available by subscription free of charge direct to your e-mail address. Starting with the NASS Home Page at www.usda.gov/nass/, click on **Publications**, then click on the **Subscribe by E-mail** button which takes you to the page describing e-mail delivery of reports. Finally, click on **Go to the Subscription Page** and follow the instructions.

PRINTED REPORTS OR DATA PRODUCTS

CALL OUR TOLL-FREE ORDER DESK: 800-999-6779 (U.S. and Canada)
Other areas, please call 703-605-6220 FAX: 703-605-6900
(Visa, MasterCard, check, or money order acceptable for payment.)

ASSISTANCE

For **assistance** with general agricultural statistics or further information about NASS or its products or services, contact the **Agricultural Statistics Hotline** at **800-727-9540**, 7:30 a.m. to 4:00 p.m. ET, or e-mail: nass@nass.usda.gov.

The United States Department of Agriculture (USDA) prohibits discrimination in all its programs on the basis of race, color, national origin, gender, religion, age, disability, political beliefs, sexual orientation, and marital or family status. (Not all prohibited bases apply to all programs.) Persons with disabilities who require alternative means for communication of program information (braille, large print, audiotape, etc.) should contact the USDA's TARGET Center at 202-720-2600 (voice and TDD).

To file a complaint of discrimination, write USDA, Director, Office of Civil Rights, Room 326-W, Whitten Building, 1400 Independence Avenue, SW, Washington, D.C., 20250-9410, or call 202-720-5964 (voice or TDD). USDA is an equal opportunity provider and employer.

Science, Markets, Policy—What's Ahead?

Agricultural Outlook Forum 2005



**Arlington, Virginia
Feb. 24-25, 2005**

Count on USDA's Outlook Forum 2005 for the latest farm and commodity prospects and insight on news shaping the outlook for agriculture.

Outlook sessions will feature USDA's first 2005 forecasts for planting, production, trade and prices and speakers on market developments.

The program will feature the science-agriculture connection. Today as never before, science is crossing paths with farming, farm policy and the marketplace. Topics include managing risks from BSE and Avian Influenza; prospects for energy prices, ethanol and co-products; early debate over the next Farm Bill; new dietary guidelines; the future of the North American marketplace; WTO talks and the bio-safety protocol.

Attendees will receive new USDA long-term commodity projections to 2014. USDA agencies will demonstrate new e-government tools for better service.

Networking opportunities abound at this popular event. Register online today. For program updates, send your name and e-mail address to agforum@oce.usda.gov.

www.usda.gov/oce/forum

agforum@oce.usda.gov