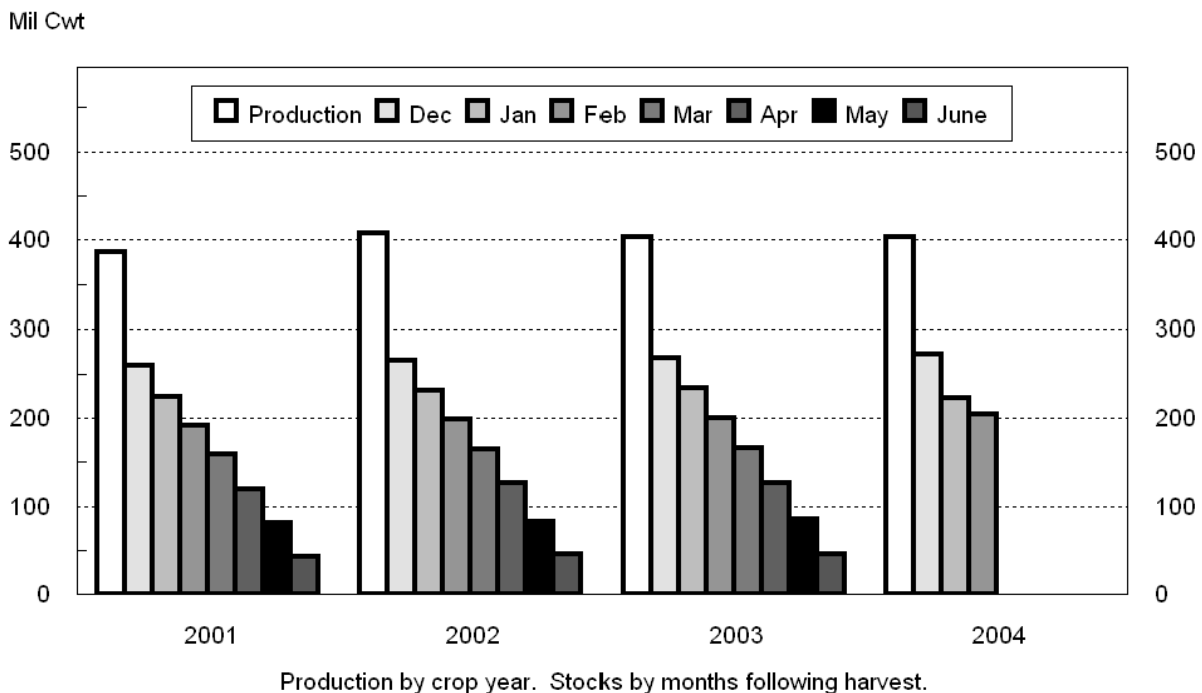


Released February 15, 2005, by the National Agricultural Statistics Service (NASS), Agricultural Statistics Board, U.S. Department of Agriculture. For information on *Potato Stocks* call Cathy Scherrer at (202) 720-4285, office hours 7:30 a.m. to 4:00 p.m. ET.

## Potato Stocks Up 2 Percent from Last Year

The 15 major potato States held 204 million cwt of potatoes in storage February 1, 2005, up 2 percent from last year and 3 percent above 2003. Potatoes in storage account for 51 percent of the 2004 fall storage States' production, 1 percentage point above last year. Stocks by type show a smaller percentage of reds and round whites but a larger percentage of russets than a year ago. Disappearance of 199 million cwt of potatoes is down 2 percent from last year and 4 percent below two years ago. Shrink and loss, at 22.5 million cwt so far this season, is up 10 percent from both last year and the same date in 2003. Processors in the 9 major States used 101 million cwt of potatoes this season, down 1 percent from a year ago and 6 percent below two years ago. Dehydrating usage accounts for 20.0 million cwt of the total processing, down 9 percent from last year and 16 percent below the same date in 2003.

## Fall Potatoes: Production and Stocks 15 Storage States



**Fall Potatoes: Production and Stocks, 15 Major States, 1995-2004**

Crop Year	Production	Dec 1	Jan 1	Feb 1	Mar 1	Apr 1	May 1	Jun 1 <sup>1</sup>
	<i>1,000 Cwt</i>	<i>1,000 Cwt</i>	<i>1,000 Cwt</i>	<i>1,000 Cwt</i>	<i>1,000 Cwt</i>	<i>1,000 Cwt</i>	<i>1,000 Cwt</i>	<i>1,000 Cwt</i>
1995	394,785	256,710	223,550	189,360	156,020	115,855	75,870	
1996	443,704	295,100	261,320	226,080	189,210	147,635	103,210	
1997	413,513	278,830	246,550	212,562	175,870	134,190	92,840	
1998	423,170	280,910	246,230	209,640	173,650	131,220	87,895	50,270
1999	420,567	275,100	239,910	207,150	169,620	128,410	86,915	47,220
2000	458,827	310,300	275,270	234,260	197,670	153,520	109,160	61,270
2001	387,033	258,750	224,680	192,090	158,590	119,950	81,200	42,990
2002	407,085	264,485	231,490	199,020	165,210	125,770	83,040	45,880
2003	403,181	267,900	233,590	200,230	166,280	126,110	85,000	46,020
2004	403,327	271,800	238,220	204,190				

<sup>1</sup> Data not available prior to 1998.

**Potatoes: Quantity Used for Processing, 9 States, 2002-2004 <sup>1</sup>**

State and Crop Year	Dec 1	Jan 1	Feb 1	Mar 1	Apr 1	May 1	Jun 1	Season
	<i>1,000 Cwt</i>	<i>1,000 Cwt</i>	<i>1,000 Cwt</i>	<i>1,000 Cwt</i>	<i>1,000 Cwt</i>	<i>1,000 Cwt</i>	<i>1,000 Cwt</i>	<i>1,000 Cwt</i>
ID & OR-Mal								
2002	28,380	34,860	41,200	48,600	56,240	63,840	71,280	85,390
2003	24,310	30,730	36,260	43,640	49,570	56,380	63,770	77,530
2004	24,360	30,840	36,820					
ME <sup>2</sup>								
2002	2,230	2,715	3,345	3,905	4,505	5,225	5,905	7,835
2003	1,590	2,085	2,720	3,420	4,095	4,740	5,400	7,270
2004	1,555	1,985	2,615					
WA & OR-Oth								
2002	33,680	39,490	44,190	51,920	58,710	64,300	71,480	79,110
2003	32,670	38,520	43,610	51,210	58,500	64,160	72,350	79,800
2004	32,305	38,130	43,570					
Other Sts <sup>3</sup>								
2002	12,675	15,530	18,735	21,780	24,810	27,405	30,655	38,700
2003	13,835	16,505	19,590	22,685	25,920	29,480	32,845	42,160
2004	12,525	15,035	18,005					
Total								
2002	76,965	92,595	107,470	126,205	144,265	160,770	179,320	211,035
2003	72,405	87,840	102,180	120,955	138,085	154,760	174,365	206,760
2004	70,745	85,990	101,010					
Dehydrated <sup>4</sup>								
2002	15,675	19,660	23,710	27,950	31,915	36,105	40,455	48,940
2003	14,250	18,440	22,050	26,090	30,290	34,630	39,070	47,750
2004	13,365	17,015	19,995					

<sup>1</sup> Total quantity received and used for processing regardless of the State in which the potatoes were produced. Amount excludes quantities used for potato chips in ME, MI, and WI.

<sup>2</sup> Includes Maine grown potatoes only.

<sup>3</sup> CO, MN, NV, ND, and WI.

<sup>4</sup> Dehydrated products except starch and flour. Included in above totals. Includes CO, ID, NV, ND, OR, WA, and WI.

**Fall Potatoes: Production and Stocks on February 1, 2004-2005 <sup>1</sup>**

State	Crop of 2003			Crop of 2004		
	Prod	Stocks Feb 1, 2004	% of Prod	Prod	Stocks Feb 1, 2005 <sup>2</sup>	% of Prod
	<i>1,000 Cwt</i>	<i>1,000 Cwt</i>	<i>Percent</i>	<i>1,000 Cwt</i>	<i>1,000 Cwt</i>	<i>Percent</i>
CA	3,528	1,600	45	3,876	1,900	49
CO	23,652	12,600	53	23,148	12,900	56
ID	123,180	67,000	54	131,970	75,000	57
ME	17,030	10,500	62	19,220	11,100	58
MI	15,015	6,200	41	13,650	5,300	39
MN	22,330	11,100	50	18,920	10,200	54
MT	3,339	2,900	87	3,551	3,250	92
NE	9,744	4,600	47	9,288		
NY	6,510	1,100	17	5,184	1,300	25
ND	27,440	15,000	55	26,765	15,300	57
OH	1,097	130	12	1,080		
OR	20,991	13,500	64	19,775	11,800	60
PA	3,375	1,100	33	2,640	900	34
WA	93,150	38,000	41	93,810	36,500	39
WI	32,800	14,900	45	30,450	14,500	48
Other Sts					4,240	
15 Sts	403,181	200,230	50	403,327	204,190	51

<sup>1</sup> Stocks include processor holdings and most of the seed to plant following year's crop. Seed usage for all seasons in 2004 totaled 26.4 million cwt.

<sup>2</sup> Missing stocks combined into "Other Sts".

**Fall Potatoes: Stocks by Type as Percent of Total Stocks,  
11 Selected States, February 1, 2004-2005**

State	Potato Types							
	Reds		Round Whites		Long Whites		Russets	
	2004	2005	2004	2005	2004	2005	2004	2005
	<i>Percent</i>	<i>Percent</i>	<i>Percent</i>	<i>Percent</i>	<i>Percent</i>	<i>Percent</i>	<i>Percent</i>	<i>Percent</i>
CO	5	5	2	2			93	93
ID	1	1			3	3	96	96
ME	4	3	46	45	1	1	49	51
MI			90	92			10	8
MN	11	8	4	5			85	87
NY	5	5	90	90			5	5
ND	13	10	28	11	4	7	55	72
OR	2	1	1	1		1	97	97
PA	4	3	96	97				
WA	1	1			3	3	96	96
WI	2	1	32	42			66	57
11 St Avg	3	2	12	11	2	2	83	85

**Fall Potatoes: Production, February 1 Stocks, and Farm Disposition,  
15 Storage States and 23 Fall Season States, 2001-2004 Crop Years**

State	Crop Year	Production	Stocks Feb 1 <sup>1</sup>	Total Used For Fall Seed	Farm Disposition		
					Where Grown		Sold
					Seed, Feed, Home Use	Shrinkage and Loss	
		<i>1,000 Cwt</i>	<i>1,000 Cwt</i>	<i>1,000 Cwt</i>	<i>1,000 Cwt</i>	<i>1,000 Cwt</i>	<i>1,000 Cwt</i>
CA	2001	1,513	800	226	3	150	1,360
	2002	4,316	2,500	208	16	399	3,901
	2003	3,528	1,600	169	1	343	3,184
	2004	3,876	1,900				
CO	2001	21,357	11,000	1,790	1,465	1,887	18,005
	2002	27,885	15,300	1,724	1,460	2,845	23,580
	2003	23,652	12,600	1,625	1,410	2,507	19,735
	2004	23,148	12,900				
ID	2001	120,200	68,000	8,250	1,230	8,261	110,709
	2002	133,385	72,500	7,920	1,440	8,650	123,295
	2003	123,180	67,000	7,700	1,463	8,900	112,817
	2004	131,970	75,000				
ME	2001	16,430	8,900	1,355	301	849	15,280
	2002	16,960	9,500	1,386	310	790	15,860
	2003	17,030	10,500	1,245	215	2,430	14,385
	2004	19,220	11,100				
MI	2001	13,950	4,800	1,181	245	945	12,760
	2002	13,878	5,600	1,099	205	1,400	12,273
	2003	15,015	6,200	1,060	265	1,680	13,070
	2004	13,650	5,300				
MN	2001	18,425	9,500	1,178	190	1,700	16,535
	2002	18,810	9,100	1,080	130	1,400	17,280
	2003	22,330	11,100	1,060	130	1,800	20,400
	2004	18,920	10,200				
MT	2001	3,296	2,630	263	152	188	2,956
	2002	3,224	2,900	257	145	142	2,937
	2003	3,339	2,900	268	160	270	2,909
	2004	3,551	3,250				
NE	2001	8,400	3,200	570	153	720	7,527
	2002	8,611	3,700	611	149	612	7,850
	2003	9,744	4,600	616	194	840	8,710
	2004	9,288					
NY	2001	5,942	1,000	495	100	502	5,340
	2002	5,500	1,100	488	100	350	5,050
	2003	6,510	1,100	440	100	520	5,890
	2004	5,184	1,300				

See footnote(s) at end of table.

-continued

**Fall Potatoes: Production, February 1 Stocks, and Farm Disposition,  
15 Storage States and 23 Fall Season States, 2001-2004 Crop Years (continued)**

State	Crop Year	Production	Stocks Feb 1 <sup>1</sup>	Total Used For Fall Seed	Farm Disposition		
					Where Grown		Sold
					Seed, Feed, Home Use	Shrinkage and Loss	
		<i>1,000 Cwt</i>	<i>1,000 Cwt</i>	<i>1,000 Cwt</i>	<i>1,000 Cwt</i>	<i>1,000 Cwt</i>	<i>1,000 Cwt</i>
ND	2001	26,400	14,500	2,301	320	3,960	22,120
	2002	23,460	11,600	2,223	450	2,650	20,360
	2003	27,440	15,000	1,805	390	3,700	23,350
	2004	26,765	15,300				
OH	2001	1,097	60	95	3	36	1,058
	2002	902	20	95	2	11	889
	2003	1,097	130	76	6	40	1,051
	2004	1,080					
OR	2001	20,730	14,000	1,200	175	1,059	19,496
	2002	24,936	12,500	1,021	266	1,386	23,284
	2003	20,991	13,500	955	275	1,290	19,426
	2004	19,775	11,800				
PA	2001	2,938	900	238	59	120	2,759
	2002	2,128	700	238	36	78	2,014
	2003	3,375	1,100	228	42	287	3,046
	2004	2,640	900				
WA	2001	94,400	40,000	3,888	300	7,000	87,100
	2002	92,340	38,500	3,912	300	6,500	85,540
	2003	93,150	38,000	4,000	280	5,600	87,270
	2004	93,810	36,500				
WI	2001	31,955	12,800	1,596	278	1,947	29,730
	2002	30,750	13,500	1,782	265	1,738	28,747
	2003	32,800	14,900	1,650	300	2,750	29,750
	2004	30,450	14,500				
Other Sts	2001						
	2002						
	2003						
	2004		4,240				
15 Sts	2001	387,033	192,090	24,626	4,974	29,324	352,735
	2002	407,085	199,020	24,044	5,274	28,951	372,860
	2003	403,181	200,230	22,897	5,231	32,957	364,993
	2004	403,327	204,190				
Fall Sts	2001	393,631		25,043	5,039	29,780	358,812
	2002	413,581		24,496	5,399	29,386	378,796
	2003	410,588		23,249	5,254	33,579	371,755
	2004	410,023					

<sup>1</sup> Missing stocks combined into "Other Sts" to avoid disclosure of individual operations.

NOTE: Stocks are defined as the quantity (whether sold or not) remaining in storage for all purposes and uses, including seed potatoes that are not yet moved, and shrinkage, waste, and other losses that occur after the date of each report. Sales of fall potatoes for all purposes for the past 5 years averaged 90.8 percent of the total fall production. Shrinkage, loss, and home use account for the remaining 9.2 percent.

**Potatoes: Production, Sold, Not Sold, and Kept for Seed,  
United States, 1999-2004**

Crop Year	Fall Potatoes					Amount Used for Seed All Seasons Following year <i>1,000 Cwt</i>
	Production <i>1,000 Cwt</i>	Sold <i>1,000 Cwt</i>	Sold as % of Prod <i>Percent</i>	Not Sold <i>1,000 Cwt</i>	Not Sold as % of Prod <i>Percent</i>	
1999	429,847	390,210	90.8	39,637	9.2	29,580
2000	467,529	420,301	89.9	47,228	10.1	27,137
2001	393,631	358,812	91.2	34,819	8.8	28,625
2002	413,581	378,796	91.6	34,785	8.4	28,149
2003	410,588	371,755	90.5	38,833	9.5	26,360
2004	410,023					

**Potatoes: Shrinkage and Loss, 15 Fall Storage States, 2001-2004**

Crop Year	To Dec 1 <i>Million Cwt</i>	To Jan 1 <i>Million Cwt</i>	To Feb 1 <i>Million Cwt</i>	To Mar 1 <i>Million Cwt</i>	To Apr 1 <i>Million Cwt</i>	To May 1 <i>Million Cwt</i>	Total Jun 1 <i>Million Cwt</i>	Season <i>Million Cwt</i>
2001	14.8	17.4	19.8	21.8	23.6	25.1	26.7	29.3
2002	15.5	18.2	20.5	22.4	24.2	25.8	27.2	29.0
2003	15.0	17.4	20.5	22.6	25.4	27.5	29.9	33.0
2004	16.6	20.0	22.5					

**Fall Potatoes: Farm Marketings, Selected States,  
2001-2003 Marketing Years**

State	Crop Year	Jul	Aug	Sep	Oct	Nov	Dec	Jan	Feb	Mar	Apr	May	Jun	Jul
		<i>Percent</i>	<i>Percent</i>	<i>Percent</i>	<i>Percent</i>	<i>Percent</i>	<i>Percent</i>	<i>Percent</i>	<i>Percent</i>	<i>Percent</i>	<i>Percent</i>	<i>Percent</i>	<i>Percent</i>	<i>Percent</i>
CA	2001					21	6	20	13	20	20			
	2002				11	11	11	10	10	10	13	8	9	7
	2003				13	12	15	14	9	8	10	7	12	
CO	2001			5	10	11	12	12	9	11	10	11	7	2
	2002			4	9	10	10	11	9	11	11	10	7	8
	2003			6	8	9	10	11	9	12	14	8	7	6
ID	2001		3	12	13	8	6	7	9	10	10	10	6	6
	2002		4	8	11	10	7	8	8	10	11	10	7	6
	2003		4	8	10	11	8	7	8	10	11	11	6	6
ME	2001		1	9	10	9	9	12	11	11	12	8	5	3
	2002		2	7	11	9	8	10	9	10	15	10	5	4
	2003		1	5	11	8	9	10	10	11	15	10	6	4
MI	2001	3	7	8	12	11	12	13	11	11	8	3	1	
	2002	4	7	11	12	13	8	6	8	12	13	6		
	2003	1	7	8	11	11	11	10	8	13	12	8		
MN	2001		10	9	7	7	6	7	9	10	10	9	8	8
	2002		9	9	9	7	8	7	9	7	10	12	8	5
	2003		9	10	10	9	6	5	6	9	10	9	9	8
NY	2001		4	20	18	17	15	9	7	6	4			
	2002		8	17	16	14	11	14	10	7	3			
	2003		1	8	29	20	17	8	7	6	4			
ND	2001			18	10	12	7	8	7	7	14	11	6	
	2002		2	22	10	9	6	9	4	8	10	13	5	2
	2003			23	10	6	7	6	9	7	11	10	9	2
OR	2001		7	13	21	8	6	5	7	7	8	8	7	3
	2002		11	9	21	9	9	6	9	8	6	7	3	2
	2003		10	9	19	9	8	7	7	7	8	8	5	3
PA	2001		17	16	15	12	12	10	8	7	2	1		
	2002		18	14	17	14	10	9	6	5	4	3		
	2003		15	18	14	11	10	10	9	6	5	2		
WA	2001		11	13	25	7	6	5	7	7	6	7	5	1
	2002		17	12	19	9	5	5	7	6	6	7	6	1
	2003		16	12	22	7	6	5	7	6	6	7	5	1
WI	2001	1	6	13	14	12	10	9	8	10	11	5	1	
	2002	1	7	12	12	12	9	9	8	12	10	6	2	
	2003	1	6	12	12	12	10	9	10	10	9	7	2	

## February Potato Stocks Up 2 Percent from Last Year

The 15 major potato States held 204 million cwt of potatoes in storage February 1, 2005, up 2 percent from last year and 3 percent above 2003. Potatoes in storage account for 51 percent of the 2004 fall storage States' production, 1 percentage point above last year. Stocks by type were 2 percent red, 11 percent round white, 2 percent long white (Shepody), and 85 percent russets, with a smaller percentage of reds and round whites but a larger percentage of russets than a year ago.

Disappearance of 199 million cwt from the start of harvest to February 1, is down 2 percent from last year and 4 percent below two years ago. Shrink and loss, at 22.5 million cwt, is up 10 percent from both last year and the same date in 2003.

Processors used 101 million cwt of 2004 crop potatoes so far this season, down 1 percent from a year ago and 6 percent below two years ago. Idaho and Malheur County, Oregon, processing increased 2 percent from a year ago, while Washington and the rest of Oregon processing is virtually unchanged from last season. December usage, at 15.0 million cwt, is 5 percent above last year and up 1 percent from two years ago. Dehydrating usage accounts for 20.0 million cwt of the total processing, down 9 percent from last year and 16 percent below the same date in 2003.

Western States held 141 million cwt of potatoes in storage on February 1, up 4 percent from last year but 2 percent below two years ago. California's potato stocks are up 19 percent from last year, while Idaho's and Montana's storages both hold 12 percent more. Potato sheds in Colorado stored 2 percent more than last year. Oregon's potato stocks are down 13 percent and Washington's sheds stored 4 percent less than last year.

Central States accounted for 49.5 million cwt of potato stocks on February 1, down 5 percent from last year but 14 percent above two years ago. Michigan's potato stocks are down 15 percent, Minnesota potato sheds stored 8 percent less than last year, and Wisconsin's stocks decreased 3 percent. Nebraska and Ohio potato stocks combined decreased 10 percent from last year. North Dakota's sheds are the only ones in the Central States storing more potatoes than last year, with an increase of 2 percent.

Eastern States stored 13.3 million cwt of potatoes on February 1, up 5 percent from last year and 18 percent above two years ago. New York's stocks are up 18 percent from last year, while Maine stocks increased 6 percent. Pennsylvania's sheds decreased 18 percent from a year ago.



## Reliability of February 1 Stocks Estimates

To assist users in evaluating the reliability of the February 1 stocks estimate, the “Root Mean Square Error,” a statistical measure based on past performance, is computed. The deviation between the February 1 stocks estimate and the final estimate is expressed as a percentage of the final estimate. The average of squared percentage deviations for the latest 20-year period is computed. The square root of the average becomes statistically the “Root Mean Square Error.” Probability statements can be made concerning expected differences in the current estimate relative to the final end-of-season estimate, assuming that factors affecting this year’s estimate are not different from those influencing recent years.

The "Root Mean Square Error" for the February 1 stocks estimate is 3.1 percent. This means that chances are 2 out of 3 that the current estimate of 204 million cwt will not be above or below the final estimate by more than 3.1 percent or approximately 6.3 million cwt. Chances are 9 out of 10 (90 percent confidence level) that the difference will not exceed 5.3 percent or approximately 10.8 million cwt.

The 10-year (1994-2003) record of differences between the February 1 stocks estimates and the final estimates averaged 3.9 million cwt, ranging from 9.7 million cwt above the final to 6.7 million cwt below the final. During the 10-year period, the February 1 estimate has been below the final estimate 6 years and above 4 years.

**Fall Potato Stocks: Preliminary and Final February 1 Stocks,  
United States, 1994-2004**

Crop Year	Preliminary Stocks	% of Final	Final Stocks
	<i>1,000 Cwt</i>	<i>Percent</i>	<i>1,000 Cwt</i>
1994	196,005	96.8	202,470
1995	184,755	97.6	189,360
1996	220,465	97.5	226,080
1997	205,850	96.8	212,562
1998	211,100	100.7	209,640
1999	205,780	99.3	207,150
2000	235,050	100.3	234,260
2001	201,750	105.0	192,090
2002	197,470	99.2	199,020
2003	200,530	100.1	200,230
2004	204,190		

## ACCESS TO REPORTS!!

---

For your convenience, there are several ways to obtain NASS reports, data products, and services:

### INTERNET ACCESS

All NASS reports are available free of charge on the worldwide Internet. For access, connect to the Internet and go to the NASS Home Page at: [www.usda.gov/nass/](http://www.usda.gov/nass/). Select "Today's Reports" or Publications and then Reports Calendar or Publications and then Search, by Title or Subject.

### E-MAIL SUBSCRIPTION

All NASS reports are available by subscription free of charge direct to your e-mail address. Starting with the NASS Home Page at [www.usda.gov/nass/](http://www.usda.gov/nass/), click on **Publications**, then click on the **Subscribe by E-mail** button which takes you to the page describing e-mail delivery of reports. Finally, click on **Go to the Subscription Page** and follow the instructions.

-----

### PRINTED REPORTS OR DATA PRODUCTS

**CALL OUR TOLL-FREE ORDER DESK: 800-999-6779 (U.S. and Canada)**  
**Other areas, please call 703-605-6220      FAX: 703-605-6900**  
**(Visa, MasterCard, check, or money order acceptable for payment.)**

-----

### ASSISTANCE

For **assistance** with general agricultural statistics or further information about NASS or its products or services, contact the **Agricultural Statistics Hotline** at **800-727-9540**, 7:30 a.m. to 4:00 p.m. ET, or e-mail: [nass@nass.usda.gov](mailto:nass@nass.usda.gov).

The United States Department of Agriculture (USDA) prohibits discrimination in all its programs on the basis of race, color, national origin, gender, religion, age, disability, political beliefs, sexual orientation, and marital or family status. (Not all prohibited bases apply to all programs.) Persons with disabilities who require alternative means for communication of program information (braille, large print, audiotape, etc.) should contact the USDA's TARGET Center at 202-720-2600 (voice and TDD).

To file a complaint of discrimination, write USDA, Director, Office of Civil Rights, Room 326-W, Whitten Building, 1400 Independence Avenue, SW, Washington, D.C., 20250-9410, or call 202-720-5964 (voice or TDD). USDA is an equal opportunity provider and employer.

# Science, Markets, Policy—What's Ahead?

---

## Agricultural Outlook Forum 2005



---

**Arlington, Virginia  
Feb. 24-25, 2005**

Count on USDA's Outlook Forum 2005 for the latest farm and commodity prospects and insight on news shaping the outlook for agriculture.

Outlook sessions will feature USDA's first 2005 forecasts for planting, production, trade and prices and speakers on market developments.

The program will feature the science-agriculture connection. Today as never before, science is crossing paths with farming, farm policy and the marketplace. Topics include managing risks from BSE and Avian Influenza; prospects for energy prices, ethanol and co-products; early debate over the next Farm Bill; new dietary guidelines; the future of the North American marketplace; WTO talks and the bio-safety protocol.

Attendees will receive new USDA long-term commodity projections to 2014. USDA agencies will demonstrate new e-government tools for better service.

Networking opportunities abound at this popular event. Register online today. For program updates, send your name and e-mail address to [agforum@oce.usda.gov](mailto:agforum@oce.usda.gov).

[www.usda.gov/oce/forum](http://www.usda.gov/oce/forum)

[agforum@oce.usda.gov](mailto:agforum@oce.usda.gov)