



# NASS

FACT FINDERS FOR AGRICULTURE  
UNITED STATES DEPARTMENT OF AGRICULTURE

Washington, D.C.

# Potato Stocks

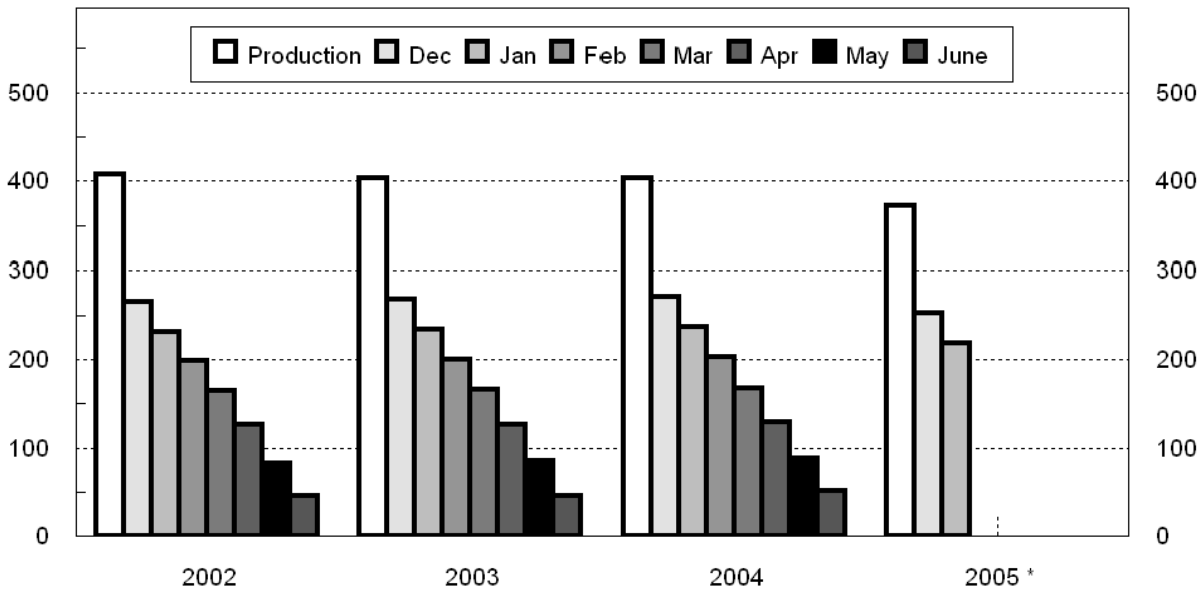
Released January 17, 2006, by the National Agricultural Statistics Service (NASS), Agricultural Statistics Board, U.S. Department of Agriculture. For information on *Potato Stocks* call Cathy Scherrer at (202) 720-4285, office hours 7:30 a.m. to 4:00 p.m. ET.

## Potato Stocks Down 7 Percent from Last Year

The 13 major potato States held 219 million cwt of potatoes in storage January 1, 2006, down 7 percent from last year and 6 percent below January 1, 2004, for comparable States. Ohio and Pennsylvania were dropped from the potato stocks program starting with the 2005 storage season. Potatoes in storage account for 59 percent of the 2005 fall storage States' production, unchanged from last year. Disappearance of 154 million cwt of potatoes is down 7 percent from last year for comparable States. Shrink and loss, at 16.2 million cwt so far this season, is down 14 percent from last year for comparable States. Processors in the 9 major States have used 81.7 million cwt of potatoes this season, down 5 percent from a year ago and 7 percent below two years ago. Dehydrating usage accounts for 16.0 million cwt of the total processing, down 14 percent from last year and 13 percent below the same date in 2004.

## Fall Potatoes: Production and Stocks 15 Storage States

Mil Cwt



Production by crop year. Stocks by months following harvest.  
\* 13 Storage States for 2005.

**Fall Potatoes: Production and Stocks, 15 Major States, 1996-2005**

Crop Year	Production	Dec 1	Jan 1	Feb 1	Mar 1	Apr 1	May 1	Jun 1 <sup>1</sup>
	<i>1,000 Cwt</i>	<i>1,000 Cwt</i>	<i>1,000 Cwt</i>	<i>1,000 Cwt</i>	<i>1,000 Cwt</i>	<i>1,000 Cwt</i>	<i>1,000 Cwt</i>	<i>1,000 Cwt</i>
1996	443,704	295,100	261,320	226,080	189,210	147,635	103,210	
1997	413,513	278,830	246,550	212,562	175,870	134,190	92,840	
1998	423,170	280,910	246,230	209,640	173,650	131,220	87,895	50,270
1999	420,567	275,100	239,910	207,150	169,620	128,410	86,915	47,220
2000	458,827	310,300	275,270	234,260	197,670	153,520	109,160	61,270
2001	387,033	258,750	224,680	192,090	158,590	119,950	81,200	42,990
2002	407,085	264,485	231,490	199,020	165,210	125,770	83,040	45,880
2003	403,181	267,900	233,590	200,230	166,280	126,110	85,000	46,020
2004	403,587	271,100	236,700	203,490	168,020	128,900	88,550	51,700
2005 <sup>2 3</sup>	372,581	251,800	218,900					

<sup>1</sup> Data not available prior to 1998.

<sup>2</sup> December 1, 2005, stocks revised.

<sup>3</sup> 13 major States.

**Potatoes: Quantity Used for Processing, 9 States, 2003-2005 <sup>1</sup>**

State and Crop Year	Dec 1	Jan 1	Feb 1	Mar 1	Apr 1	May 1	Jun 1	Season
	<i>1,000 Cwt</i>	<i>1,000 Cwt</i>	<i>1,000 Cwt</i>	<i>1,000 Cwt</i>	<i>1,000 Cwt</i>	<i>1,000 Cwt</i>	<i>1,000 Cwt</i>	<i>1,000 Cwt</i>
<b>ID &amp; OR-Mal</b>								
2003	24,310	30,730	36,260	43,640	49,570	56,380	63,770	77,530
2004	24,360	30,840	36,820	44,610	51,000	58,090	65,800	84,600
2005	22,590	28,960						
<b>ME <sup>2</sup></b>								
2003	1,590	2,085	2,720	3,420	4,095	4,740	5,400	7,270
2004	1,540	1,970	2,600	3,135	3,700	4,340	4,910	6,590
2005 <sup>3</sup>	1,290	1,805						
<b>WA &amp; OR-Oth</b>								
2003	32,670	38,520	43,610	51,210	58,500	64,160	72,350	79,800
2004	32,305	38,130	43,570	50,730	57,140	63,855	71,355	78,680
2005 <sup>3</sup>	30,310	35,880						
<b>Other Sts <sup>4</sup></b>								
2003	13,835	16,505	19,590	22,685	25,920	29,480	32,845	42,160
2004	12,490	15,000	17,965	20,910	24,150	27,480	30,945	41,175
2005 <sup>3</sup>	11,820	15,030						
<b>Total</b>								
2003	72,405	87,840	102,180	120,955	138,085	154,760	174,365	206,760
2004	70,695	85,940	100,955	119,385	135,990	153,765	173,010	211,045
2005 <sup>3</sup>	66,010	81,675						
<b>Dehydrated <sup>5</sup></b>								
2003	14,250	18,440	22,050	26,090	30,290	34,630	39,070	47,750
2004	14,525	18,540	21,875	25,970	30,020	33,685	38,505	47,805
2005 <sup>3</sup>	12,180	15,995						

<sup>1</sup> Total quantity received and used for processing regardless of the State in which the potatoes were produced. Amount excludes quantities used for potato chips in ME, MI, and WI.

<sup>2</sup> Includes Maine grown potatoes only.

<sup>3</sup> December revised.

<sup>4</sup> CO, MN, NV, ND, and WI.

<sup>5</sup> Dehydrated products except starch and flour. Included in above totals. Includes CO, ID, NV, ND, OR, WA, and WI.

**Fall Potatoes: Production and Stocks on January 1, 2005-2006 <sup>1</sup>**

State	Crop of 2004			Crop of 2005			
	Prod	Stocks Jan 1, 2005	% of Prod	Prod	Stocks Dec 1, 2005	Stocks Jan 1, 2006	Jan % of Prod
	<i>1,000 Cwt</i>	<i>1,000 Cwt</i>	<i>Percent</i>	<i>1,000 Cwt</i>	<i>1,000 Cwt</i>	<i>1,000 Cwt</i>	<i>Percent</i>
CA	3,648	2,300	63	3,240	1,600	1,300	40
CO	23,791	15,800	66	22,292	16,300	14,000	63
ID	131,970	84,500	64	116,975	84,000	74,500	64
ME <sup>2</sup>	19,065	12,800	67	15,736	12,800	11,500	73
MI <sup>2</sup>	13,650	6,300	46	13,920	7,900	6,400	46
MN	18,920	11,600	61	17,630	13,500	11,100	63
MT <sup>2</sup>	3,551	3,400	96	3,434	3,400	3,300	96
NE	9,288	5,300	57	8,245	5,700	4,900	59
NY	5,184	1,600	31	5,226	3,100	2,300	44
ND	26,765	17,500	65	20,500	14,000	11,300	55
OH <sup>3</sup>	1,080	100	9				
OR	19,775	14,500	73	22,023	19,000	16,500	75
PA <sup>3</sup>	2,640	1,100	42				
WA	93,810	43,000	46	95,480	52,000	46,000	48
WI <sup>2</sup>	30,450	16,900	56	27,880	18,500	15,800	57
15 Sts <sup>2 4</sup>	403,587	236,700	59	372,581	251,800	218,900	59

<sup>1</sup> Stocks include processor holdings and most of the seed to plant the following year's crop. Seed usage for all seasons in 2005 totaled 24.7 million cwt.

<sup>2</sup> December 1, 2005, stocks revised.

<sup>3</sup> Stock estimates discontinued in 2005.

<sup>4</sup> 13 States for the 2005 crop.

**Fall Potatoes: Stocks by Type as Percent of Total Stocks,  
11 Major States, January 1, 2005-2006**

State	Potato Types											
	Reds			Round Whites			Long Whites			Russets		
	Jan 2005	Dec 2005	Jan 2006	Jan 2005	Dec 2005	Jan 2006	Jan 2005	Dec 2005	Jan 2006	Jan 2005	Dec 2005	Jan 2006
	<i>Percent</i>	<i>Percent</i>	<i>Percent</i>	<i>Percent</i>	<i>Percent</i>	<i>Percent</i>	<i>Percent</i>	<i>Percent</i>	<i>Percent</i>	<i>Percent</i>	<i>Percent</i>	<i>Percent</i>
CO	5	4	4	2	11	11				93	85	85
ID	1	3	2				5	2	2	94	95	96
ME	3	2	1	42	42	41	1	3	2	54	53	56
MI		1		90	87	90				10	12	10
MN	9	7	8	5	6	5				86	87	87
NY	5	5	5	90	90	90				5	5	5
ND	11	13	11	16	18	16	10	4	2	63	65	71
OR	1	1	1	1	1	1	1	2	2	97	96	96
PA <sup>1</sup>	1			99								
WA	1	1	1		1		4	5	3	95	93	96
WI	1	4	2	38	38	29				61	58	69
11 St Avg	3	3	2	11	12	10	3	2	2	83	83	86

<sup>1</sup> Estimates discontinued in 2005.

**Fall Potatoes: Production, January 1 Stocks, and Farm Disposition,  
15 Storage States and Fall Season States, 2002-2005 Crop Years**

State	Crop Year	Production	Stocks Jan 1	Total Used For Fall Seed	Farm Disposition		
					Where Grown		Sold
					Seed, Feed, Home Use	Shrinkage and Loss	
		<i>1,000 Cwt</i>	<i>1,000 Cwt</i>	<i>1,000 Cwt</i>	<i>1,000 Cwt</i>	<i>1,000 Cwt</i>	<i>1,000 Cwt</i>
CA	2002	4,316	2,900	208	16	399	3,901
	2003	3,528	2,100	167	1	343	3,184
	2004	3,648	2,300	202	1	292	3,355
	2005	3,240	1,300				
CO	2002	27,885	18,100	1,724	1,460	2,845	23,580
	2003	23,652	15,300	1,625	1,410	2,507	19,735
	2004	23,791	15,800	1,513	1,300	2,286	20,205
	2005	22,292	14,000				
ID	2002	133,385	82,500	7,920	1,440	8,650	123,295
	2003	123,180	76,500	7,810	1,463	8,900	112,817
	2004	131,970	84,500	7,260	1,250	10,902	119,818
	2005	116,975	74,500				
ME	2002	16,960	11,200	1,386	310	790	15,860
	2003	17,030	12,100	1,245	215	2,430	14,385
	2004	19,065	12,800	1,188	190	4,900	13,975
	2005	15,736	11,500				
MI	2002	13,878	6,500	1,099	205	1,400	12,273
	2003	15,015	7,700	1,060	265	1,680	13,070
	2004	13,650	6,300	860	194	1,656	11,800
	2005	13,920	6,400				
MN	2002	18,810	10,500	1,080	130	1,400	17,280
	2003	22,330	12,400	1,060	130	1,800	20,400
	2004	18,920	11,600	837	100	1,750	17,070
	2005	17,630	11,100				
MT	2002	3,224	3,000	257	145	142	2,937
	2003	3,339	3,000	268	160	270	2,909
	2004	3,551	3,400	264	156	276	3,119
	2005	3,434	3,300				
NE	2002	8,611	4,550	611	149	612	7,850
	2003	9,744	5,600	616	194	840	8,710
	2004	9,288	5,300	532	212	906	8,170
	2005	8,245	4,900				
NY	2002	5,500	1,800	488	100	350	5,050
	2003	6,510	1,600	440	100	520	5,890
	2004	5,184	1,600	451	100	513	4,571
	2005	5,226	2,300				

--continued

**Fall Potatoes: Production, January 1 Stocks, and Farm Disposition,  
15 Storage States and Fall Season States, 2002-2005 Crop Years (continued)**

State	Crop Year	Production	Stocks Jan 1	Total Used For Fall Seed	Farm Disposition		
					Where Grown		Sold
					Seed, Feed, Home Use	Shrinkage and Loss	
		<i>1,000 Cwt</i>	<i>1,000 Cwt</i>	<i>1,000 Cwt</i>	<i>1,000 Cwt</i>	<i>1,000 Cwt</i>	<i>1,000 Cwt</i>
ND	2002	23,460	14,000	2,223	450	2,650	20,360
	2003	27,440	17,300	1,995	390	3,700	23,350
	2004	26,765	17,500	1,755	240	2,825	23,700
	2005	20,500	11,300				
OH <sup>1</sup>	2002	902	40	95	2	11	889
	2003	1,097	190	76	6	40	1,051
	2004	1,080	100	71	6	33	1,041
	2005						
OR	2002	24,936	15,000	1,021	266	1,386	23,284
	2003	20,991	15,800	883	275	1,290	19,426
	2004	19,775	14,500	892	241	1,264	18,270
	2005	22,023	16,500				
PA <sup>1</sup>	2002	2,128	1,000	238	36	78	2,014
	2003	3,375	1,500	228	42	287	3,046
	2004	2,640	1,100	253	39	216	2,385
	2005						
WA	2002	92,340	43,500	3,912	300	6,500	85,540
	2003	93,150	44,000	4,000	280	5,600	87,270
	2004	93,810	43,000	3,850	240	5,600	87,970
	2005	95,480	46,000				
WI	2002	30,750	16,900	1,782	265	1,738	28,747
	2003	32,800	18,500	1,562	300	2,750	29,750
	2004	30,450	16,900	1,420	260	1,985	28,205
	2005	27,880	15,800				
15 Sts <sup>2</sup>	2002	407,085	231,490	24,044	5,274	28,951	372,860
	2003	403,181	233,590	23,035	5,231	32,957	364,993
	2004	403,587	236,700	21,348	4,529	35,404	363,654
	2005	372,581	218,900				
Fall Sts	2002	413,581		24,496	5,399	29,386	378,796
	2003	410,588		23,387	5,254	33,579	371,755
	2004	410,253		21,639	4,549	35,923	369,781
	2005	381,026					

<sup>1</sup> Stock estimates discontinued in 2005.

<sup>2</sup> 13 storage States starting in 2005.

NOTE: Stocks are defined as the quantity (whether sold or not) remaining in storage for all purposes and uses, including seed potatoes that are not yet moved, and shrinkage, waste, and other losses that occur after the date of each report. Sales of fall potatoes for all purposes for the past 5 years averaged 90.7 percent of the total fall production. Shrinkage, loss, and home use account for the remaining 9.3 percent.

**Potatoes: Production, Sold, Not Sold, and Kept for Seed,  
United States, 2000-2005**

Crop Year	Fall Potatoes					Amount Used for Seed All Seasons Following year <i>1,000 Cwt</i>
	Production <i>1,000 Cwt</i>	Sold <i>1,000 Cwt</i>	Sold as % of Prod <i>Percent</i>	Not Sold <i>1,000 Cwt</i>	Not Sold as % of Prod <i>Percent</i>	
2000	467,529	420,301	89.9	47,228	10.1	27,137
2001	393,631	358,812	91.2	34,819	8.8	28,625
2002	413,581	378,796	91.6	34,785	8.4	28,149
2003	410,588	371,755	90.5	38,833	9.5	26,687
2004	410,253	369,781	90.1	40,472	9.9	24,695
2005	381,026					

**Potatoes: Shrinkage and Loss, 15 Fall Storage States, 2002-2005**

Crop Year	To Dec 1 <i>Million Cwt</i>	To Jan 1 <i>Million Cwt</i>	To Feb 1 <i>Million Cwt</i>	To Mar 1 <i>Million Cwt</i>	To Apr 1 <i>Million Cwt</i>	To May 1 <i>Million Cwt</i>	Total Jun 1 <i>Million Cwt</i>	Season <i>Million Cwt</i>
2002	15.5	18.2	20.5	22.4	24.2	25.8	27.2	29.0
2003	15.0	17.4	20.5	22.6	25.4	27.5	29.9	33.0
2004	15.5	19.1	22.0	24.8	27.3	29.7	32.5	35.4
2005 <sup>1 2</sup>	13.9	16.2						

<sup>1</sup> December 1, 2005, shrink and loss revised.

<sup>2</sup> 13 fall storage States.

**Fall Potatoes: Farm Marketings, Selected States,  
2002-2004 Marketing Years**

State	Crop Year	Jul	Aug	Sep	Oct	Nov	Dec	Jan	Feb	Mar	Apr	May	Jun	Jul
		<i>Percent</i>	<i>Percent</i>	<i>Percent</i>	<i>Percent</i>	<i>Percent</i>	<i>Percent</i>	<i>Percent</i>	<i>Percent</i>	<i>Percent</i>	<i>Percent</i>	<i>Percent</i>	<i>Percent</i>	<i>Percent</i>
CA	2002				11	11	11	10	10	10	13	8	9	7
	2003				13	12	15	14	9	8	10	7	12	
	2004				8	9	21	13	8	14	12	7	8	
CO	2002			4	9	10	10	11	9	11	11	10	7	8
	2003			6	8	9	10	11	9	12	14	8	7	6
	2004			5	7	9	10	10	8	12	10	11	11	7
ID	2002		4	8	11	10	7	8	8	10	11	10	7	6
	2003		4	8	10	11	8	7	8	10	11	11	6	6
	2004		6	9	10	11	7	6	6	9	10	9	10	7
ME	2002		2	7	11	9	8	10	9	10	15	10	5	4
	2003		1	5	11	8	9	10	10	11	15	10	6	4
	2004		1	9	6	7	10	10	10	11	15	10	7	4
MI	2002	4	7	11	12	13	8	6	8	12	13	6		
	2003	1	7	8	11	11	11	10	8	13	12	8		
	2004	1	10	11	11	12	12	11	8	10	9	5		
MN	2002		9	9	9	7	8	7	9	7	10	12	8	5
	2003		9	10	10	9	6	5	6	9	10	9	9	8
	2004		9	8	8	6	6	7	8	13	7	9	10	9
NY	2002		8	17	16	14	11	14	10	7	3			
	2003		1	8	29	20	17	8	7	6	4			
	2004		4	16	19	16	13	10	9	8	5			
ND	2002		2	22	10	9	6	9	4	8	10	13	5	2
	2003			23	10	6	7	6	9	7	11	10	9	2
	2004		1	20	9	6	6	8	7	11	11	7	8	6
OR	2002		11	9	21	9	9	6	9	8	6	7	3	2
	2003		10	9	19	9	8	7	7	7	8	8	5	3
	2004		12	11	16	8	6	4	9	10	9	8	4	3
PA	2002		18	14	17	14	10	9	6	5	4	3		
	2003		15	18	14	11	10	10	9	6	5	2		
	2004	1	18	16	15	8	15	8	6	5	6	2		
WA	2002		17	12	19	9	5	5	7	6	6	7	6	1
	2003		16	12	22	7	6	5	7	6	6	7	5	1
	2004		18	14	21	6	5	5	7	6	6	6	5	1
WI	2002	1	7	12	12	12	9	9	8	12	10	6	2	
	2003	1	6	12	12	12	10	9	10	10	9	7	2	
	2004		6	14	12	12	9	9	9	11	10	6	2	
US	2002		8	10	13	10	7	8	8	9	9	9	6	3
	2003		7	10	14	10	8	7	8	9	10	9	5	3
	2004		9	11	13	9	7	7	7	9	9	8	7	4

## January Potato Stocks Down 7 Percent from Last Year

The 13 major potato States held 219 million cwt of potatoes in storage January 1, 2006, down 7 percent from last year and 6 percent below January 1, 2004, for comparable States. Ohio and Pennsylvania were dropped from the potato stocks program starting with the 2005 storage season. Potatoes in storage account for 59 percent of the 2005 fall storage States' production, unchanged from last year. Stocks by type were 2 percent red, 10 percent round white, 2 percent long white (Shepody), and 86 percent russets, with a smaller percentage of reds and long whites but a larger percentage of russets than a year ago for comparable States.

Disappearance of 154 million cwt from the start of harvest to January 1, is down 7 percent from last year for comparable States. Shrink and loss, at 16.2 million cwt, is down 14 percent from last year for comparable States.

Processors have used 81.7 million cwt of 2005 crop potatoes so far this season, down 5 percent from a year ago and 7 percent below 2 years ago. Both Idaho and Malheur County, Oregon, and Washington and the rest of Oregon total processing dropped 6 percent from last season. Dehydrating usage accounts for 16.0 million cwt of the total processing, down 14 percent from last year and 13 percent below the same date in 2004.

Western States held 156 million cwt of potatoes in storage on January 1, down 5 percent from last year. Idaho's potato stocks are down 12 percent from last year, Colorado's potato sheds stored 11 percent less than in 2005, stocks in Montana are 3 percent below last season, and California's stocks decreased 43 percent from last year. Oregon's potato stocks are up 14 percent from last year and Washington's potato sheds stored 7 percent more than last season.

Central States accounted for 49.5 million cwt of potato stocks on January 1, down 14 percent from last year for comparable States. Minnesota's potato stocks decreased 4 percent from last year, Wisconsin's stocks are down 7 percent from 2005, Nebraska's potato sheds stored 8 percent less than last season, and stocks in North Dakota are 35 percent below January 1, 2005. Michigan potato sheds stored 2 percent more than last year.

Eastern States stored 13.8 million cwt of potatoes on January 1, down 4 percent from last year for comparable States. Maine's potato sheds hold 10 percent less than last year, while New York's potato stocks increased 44 percent from a year ago.



## Reliability of January 1 Stocks Estimates

To assist users in evaluating the reliability of the January 1 stocks estimate, the “Root Mean Square Error,” a statistical measure based on past performance, is computed. The deviation between the January 1 stocks estimate and the final estimate is expressed as a percentage of the final estimate. The average of squared percentage deviations for the latest 20-year period is computed. The square root of the average becomes statistically the “Root Mean Square Error.” Probability statements can be made concerning expected differences in the current estimate relative to the final end-of-season estimate, assuming that factors affecting this year’s estimate are not different from those influencing recent years.

The "Root Mean Square Error" for the January 1 stocks estimate is 2.6 percent. This means that chances are 2 out of 3 that the current estimate of 219 million cwt will not be above or below the final estimate by more than 2.6 percent or approximately 5.7 million cwt. Chances are 9 out of 10 (90 percent confidence level) that the difference will not exceed 4.6 percent or approximately 10.1 million cwt.

The 10-year (1995-2004) record of differences between the January 1 stocks estimates and the final estimates averaged 3.0 million cwt, ranging from 8.7 million cwt above the final to 5.7 million cwt below the final. During the 10-year period, the January 1 estimate has been below the final estimate 6 years and above 4 years.

**Fall Potato Stocks: Preliminary and Final January 1 Stocks,  
United States, 1995-2005**

Crop Year	Preliminary Stocks	% of Final	Final Stocks
	<i>1,000 Cwt</i>	<i>Percent</i>	<i>1,000 Cwt</i>
1995	218,970	98.0	223,550
1996	256,520	98.2	261,320
1997	240,850	97.7	246,550
1998	246,220	100.0	246,230
1999	238,160	99.3	239,910
2000	272,960	99.2	275,270
2001	233,420	103.9	224,680
2002	232,140	100.3	231,490
2003	233,880	100.1	233,590
2004	238,220	100.6	236,700
2005	218,900		

## ACCESS TO REPORTS!!

---

For your convenience, there are several ways to obtain NASS reports, data products, and services:

### INTERNET ACCESS

All NASS reports are available free of charge on the worldwide Internet. For access, connect to the Internet and go to the NASS Home Page at: [www.nass.usda.gov](http://www.nass.usda.gov).

### E-MAIL SUBSCRIPTION

All NASS reports are available by subscription free of charge direct to your e-mail address. Starting with the NASS Home Page at [www.nass.usda.gov](http://www.nass.usda.gov), under the right navigation, *Receive reports by Email*, click on **National** or **State**. Follow the instructions on the screen.

-----

### PRINTED REPORTS OR DATA PRODUCTS

**CALL OUR TOLL-FREE ORDER DESK: 800-999-6779 (U.S. and Canada)**  
**Other areas, please call 703-605-6220      FAX: 703-605-6900**  
**(Visa, MasterCard, check, or money order acceptable for payment.)**

-----

### ASSISTANCE

For **assistance** with general agricultural statistics or further information about NASS or its products or services, contact the **Agricultural Statistics Hotline** at **800-727-9540**, 7:30 a.m. to 4:00 p.m. ET, or e-mail: [nass@nass.usda.gov](mailto:nass@nass.usda.gov).

The U.S. Department of Agriculture (USDA) prohibits discrimination in all its programs and activities on the basis of race, color, national origin, age, disability, and where applicable, sex, marital status, familial status, parental status, religion, sexual orientation, genetic information, political beliefs, reprisal, or because all or part of an individual's income is derived from any public assistance program. (Not all prohibited bases apply to all programs.) Persons with disabilities who require alternative means for communication of program information (Braille, large print, audiotape, etc.) should contact USDA's TARGET Center at (202) 720-2600 (voice and TDD).

To file a complaint of discrimination, write to USDA, Director, Office of Civil Rights, 1400 Independence Avenue, S.W., Washington, D.C. 20250-9410, or call (800) 795-3272 (voice) or (202) 720-6382 (TDD). USDA is an equal opportunity provider and employer.

# Prospering in Rural America



**February 16-17, 2006**  
**Crystal Gateway**  
**Marriott Hotel**  
**Arlington, Virginia**

The theme is "Prospering in Rural America," and the program will highlight the economic development of rural America. In addition, there will be a broad range of sessions, including Shifting Trade Patterns, Chinese Agriculture, Homeland Security, the African Growth & Opportunity Act, Bio-fuel Production and New Energy Forms in Rural Areas, Community Supported Agriculture, and Feedback from the 2007 Farm Bill Listening Sessions.

Agriculture Secretary Mike Johanns and other top experts in agriculture will be among the more than 130 speakers.

Find full program and registration details at [www.usda.gov/oce/forum](http://www.usda.gov/oce/forum) or call toll free, 1-877-572-6043. Forum speeches can be downloaded after February 17, 2006.

[www.usda.gov/oce/forum](http://www.usda.gov/oce/forum)

**(877) 572-6043 toll free**