



# NASS

FACT FINDERS FOR AGRICULTURE  
UNITED STATES DEPARTMENT OF AGRICULTURE

Washington, D.C.

# Potato Stocks

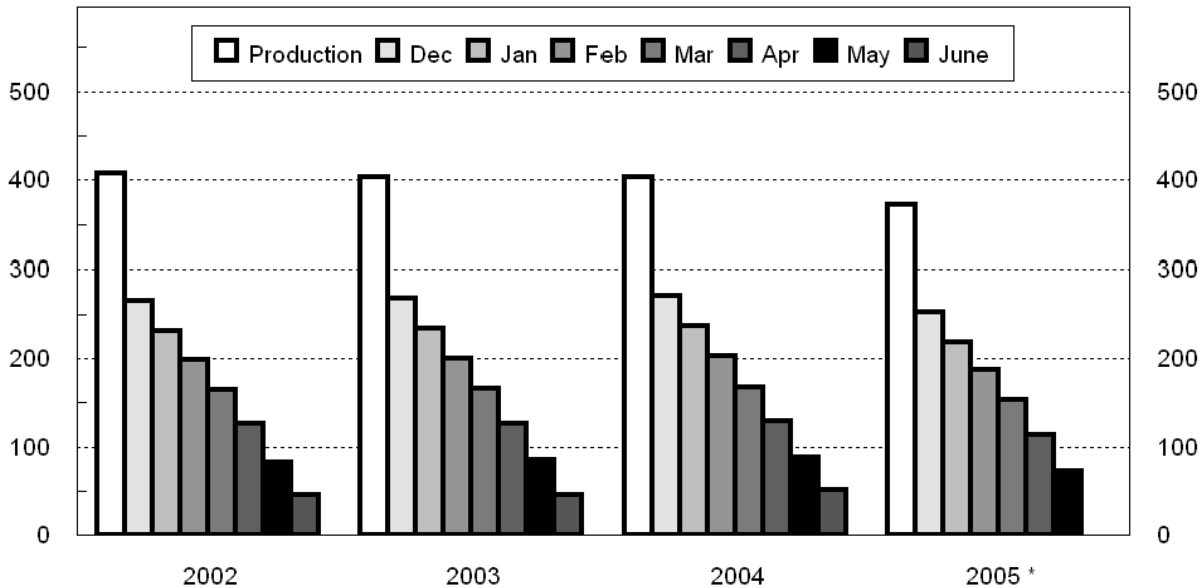
Released May 16, 2006, by the National Agricultural Statistics Service (NASS), Agricultural Statistics Board, U.S. Department of Agriculture. For information on *Potato Stocks* call Cathy Scherrer at (202) 720-4285, office hours 7:30 a.m. to 4:00 p.m. ET.

## Potato Stocks Down 17 Percent from Last Year

The 13 major potato States held 73.0 million cwt of potatoes in storage May 1, 2006, down 17 percent from last year and 14 percent below May 1, 2004, for comparable States. Ohio and Pennsylvania were dropped from the potato stocks program starting with the 2005 storage season. Potatoes in storage account for 20 percent of the 2005 fall storage States' production, down 2 percentage points from last year. Disappearance of 300 million cwt of potatoes is down 4 percent from last year for comparable States. Shrink and loss, at 23.2 million cwt so far this season, is down 21 percent from last year for comparable States. Processors in the 9 major States have used 150 million cwt of potatoes this season, down 2 percent from a year ago and 3 percent below 2 years ago. Dehydrating usage accounts for 30.8 million cwt of the total processing, down 8 percent from last year and 11 percent below the same date in 2004.

## Fall Potatoes: Production and Stocks 15 Storage States

Mil Cwt



Production by crop year. Stocks by months following harvest.  
\* 13 Storage States for 2005.

**Fall Potatoes: Production and Stocks, 15 Major States, 1996-2005**

Crop Year	Production	Dec 1	Jan 1	Feb 1	Mar 1	Apr 1	May 1	Jun 1 <sup>1</sup>
	<i>1,000 Cwt</i>	<i>1,000 Cwt</i>	<i>1,000 Cwt</i>	<i>1,000 Cwt</i>	<i>1,000 Cwt</i>	<i>1,000 Cwt</i>	<i>1,000 Cwt</i>	<i>1,000 Cwt</i>
1996	443,704	295,100	261,320	226,080	189,210	147,635	103,210	
1997	413,513	278,830	246,550	212,562	175,870	134,190	92,840	
1998	423,170	280,910	246,230	209,640	173,650	131,220	87,895	50,270
1999	420,567	275,100	239,910	207,150	169,620	128,410	86,915	47,220
2000	458,827	310,300	275,270	234,260	197,670	153,520	109,160	61,270
2001	387,033	258,750	224,680	192,090	158,590	119,950	81,200	42,990
2002	407,085	264,485	231,490	199,020	165,210	125,770	83,040	45,880
2003	403,181	267,900	233,590	200,230	166,280	126,110	85,000	46,020
2004	403,587	271,100	236,700	203,490	168,020	128,900	88,550	51,700
2005 <sup>2</sup>	372,581	251,800	218,900	187,600	153,700	113,900	72,950	

<sup>1</sup> Data not available prior to 1998.

<sup>2</sup> 13 major States.

**Potatoes: Quantity Used for Processing, 9 States, 2003-2005 <sup>1</sup>**

State and Crop Year	Dec 1	Jan 1	Feb 1	Mar 1	Apr 1	May 1	Jun 1	Season
	<i>1,000 Cwt</i>	<i>1,000 Cwt</i>	<i>1,000 Cwt</i>	<i>1,000 Cwt</i>	<i>1,000 Cwt</i>	<i>1,000 Cwt</i>	<i>1,000 Cwt</i>	<i>1,000 Cwt</i>
ID & OR-Mal								
2003	24,310	30,730	36,260	43,640	49,570	56,380	63,770	77,530
2004	24,360	30,840	36,820	44,610	51,000	58,090	65,800	84,600
2005	22,590	28,960	35,570	42,800	50,220	57,120		
ME <sup>2</sup>								
2003	1,590	2,085	2,720	3,420	4,095	4,740	5,400	7,270
2004	1,540	1,970	2,600	3,135	3,700	4,340	4,910	6,590
2005	1,290	1,805	2,405	3,015	3,740	4,400		
WA & OR-Oth								
2003	32,670	38,520	43,610	51,210	58,500	64,160	72,350	79,800
2004	32,305	38,130	43,570	50,730	57,140	63,855	71,355	78,680
2005	30,310	35,895	40,545	48,290	55,320	61,855		
Other Sts <sup>3</sup>								
2003	13,835	16,505	19,590	22,685	25,920	29,480	32,845	42,160
2004	12,490	15,000	17,965	20,910	24,150	27,480	30,945	41,175
2005 <sup>4</sup>	11,820	15,030	17,980	21,230	24,080	26,990		
Total								
2003	72,405	87,840	102,180	120,955	138,085	154,760	174,365	206,760
2004	70,695	85,940	100,955	119,385	135,990	153,765	173,010	211,045
2005 <sup>4</sup>	66,010	81,690	96,500	115,335	133,360	150,365		
Dehydrated <sup>5</sup>								
2003	14,250	18,440	22,050	26,090	30,290	34,630	39,070	47,750
2004	14,525	18,540	21,875	25,970	30,020	33,685	38,505	47,805
2005 <sup>4</sup>	12,180	15,920	19,515	23,210	27,205	30,825		

<sup>1</sup> Total quantity received and used for processing regardless of the State in which the potatoes were produced. Amount excludes quantities used for potato chips in ME, MI, and WI.

<sup>2</sup> Includes Maine grown potatoes only.

<sup>3</sup> CO, MN, NV, ND, and WI.

<sup>4</sup> April revised.

<sup>5</sup> Dehydrated products except starch and flour. Included in above totals. Includes CO, ID, NV, ND, OR, WA, and WI.

**Fall Potatoes: Production and Stocks on May 1, 2005-2006 <sup>1</sup>**

State	Crop of 2004			Crop of 2005		
	Prod	Stocks May 1, 2005 <sup>2</sup>	% of Prod	Prod	Stocks May 1, 2006 <sup>2</sup>	% of Prod
	<i>1,000 Cwt</i>	<i>1,000 Cwt</i>	<i>Percent</i>	<i>1,000 Cwt</i>	<i>1,000 Cwt</i>	<i>Percent</i>
CA	3,648	500	14	3,240	400	12
CO	23,791	6,000	25	22,292	4,300	19
ID	131,970	38,500	29	116,975	30,000	26
ME	19,065	5,000	26	15,736	4,600	29
MI	13,650	900	7	13,920	900	6
MN	18,920	5,100	27	17,630	2,700	15
MT	3,551	500	14	3,434		
NE	9,288			8,245	1,200	15
NY	5,184			5,226		
ND	26,765	7,200	27	20,500	2,800	14
OH <sup>3</sup>	1,080					
OR	19,775	3,900	20	22,023	5,000	23
PA <sup>3</sup>	2,640					
WA	93,810	15,500	17	95,480	17,000	18
WI	30,450	3,800	12	27,880	3,700	13
Other Sts		1,650			350	
15 Sts <sup>4</sup>	403,587	88,550	22	372,581	72,950	20

<sup>1</sup> Stocks include processor holdings and most of the seed to plant following year's crop. Seed usage for all seasons in 2005 totaled 24.7 million cwt.

<sup>2</sup> Missing stocks combined into "Other Sts".

<sup>3</sup> Stock estimates discontinued for the 2005 crop.

<sup>4</sup> 13 States for the 2005 crop.

NOTE: Stocks are defined as the quantity (whether sold or not) remaining in storage for all purposes and uses, including seed potatoes that are not yet moved, and shrinkage, waste, and other losses that occur after the date of each report. Sales of fall potatoes for all purposes for the past 5 years averaged 90.7 percent of the total fall production. Shrinkage, loss, and home use account for the remaining 9.3 percent.

**Potatoes: Production, Sold, Not Sold, and Kept for Seed,  
United States, 2000-2005**

Crop Year	Fall Potatoes					Amount Used for Seed All Seasons Following year
	Production	Sold	Sold as % of Prod	Not Sold	Not Sold as % of Prod	
	<i>1,000 Cwt</i>	<i>1,000 Cwt</i>	<i>Percent</i>	<i>1,000 Cwt</i>	<i>Percent</i>	<i>1,000 Cwt</i>
2000	467,529	420,301	89.9	47,228	10.1	27,137
2001	393,631	358,812	91.2	34,819	8.8	28,625
2002	413,581	378,796	91.6	34,785	8.4	28,149
2003	410,588	371,755	90.5	38,833	9.5	26,687
2004	410,253	369,781	90.1	40,472	9.9	24,695
2005	381,026					

**Fall Potatoes: Production, May 1 Stocks, and Farm Disposition,  
15 Storage States and All Fall Season States, 2002-2005 Crop Years**

State	Crop Year	Production	Stocks May 1 <sup>1</sup>	Total Used For Fall Seed	Farm Disposition		
					Where Grown		Sold
					Seed, Feed, Home Use	Shrinkage and Loss	
		<i>1,000 Cwt</i>	<i>1,000 Cwt</i>	<i>1,000 Cwt</i>	<i>1,000 Cwt</i>	<i>1,000 Cwt</i>	<i>1,000 Cwt</i>
CA	2002	4,316	1,000	208	16	399	3,901
	2003	3,528	700	167	1	343	3,184
	2004	3,648	500	202	1	292	3,355
	2005	3,240	400				
CO	2002	27,885	5,800	1,724	1,460	2,845	23,580
	2003	23,652	4,300	1,625	1,410	2,507	19,735
	2004	23,791	6,000	1,513	1,300	2,286	20,205
	2005	22,292	4,300				
ID	2002	133,385	34,500	7,920	1,440	8,650	123,295
	2003	123,180	33,000	7,810	1,463	8,900	112,817
	2004	131,970	38,500	7,260	1,250	10,902	119,818
	2005	116,975	30,000				
ME	2002	16,960	3,900	1,386	310	790	15,860
	2003	17,030	4,100	1,245	215	2,430	14,385
	2004	19,065	5,000	1,188	190	4,900	13,975
	2005	15,736	4,600				
MI	2002	13,878	1,000	1,099	205	1,400	12,273
	2003	15,015	1,500	1,060	265	1,680	13,070
	2004	13,650	900	860	194	1,656	11,800
	2005	13,920	900				
MN	2002	18,810	4,500	1,080	130	1,400	17,280
	2003	22,330	5,500	1,060	130	1,800	20,400
	2004	18,920	5,100	837	100	1,750	17,070
	2005	17,630	2,700				
MT	2002	3,224	400	257	145	142	2,937
	2003	3,339	1,000	268	160	270	2,909
	2004	3,551	500	264	156	276	3,119
	2005	3,434					
NE	2002	8,611		611	149	612	7,850
	2003	9,744		616	194	840	8,710
	2004	9,288		532	212	906	8,170
	2005	8,245	1,200				
NY	2002	5,500		488	100	350	5,050
	2003	6,510		440	100	520	5,890
	2004	5,184		451	100	513	4,571
	2005	5,226					

See footnote(s) at end of table.

--continued

**Fall Potatoes: Production, May 1 Stocks, and Farm Disposition,  
15 Storage States and All Fall Season States, 2002-2005 Crop Years (continued)**

State	Crop Year	Production	Stocks May 1 <sup>1</sup>	Total Used For Fall Seed	Farm Disposition		
					Where Grown		Sold
					Seed, Feed, Home Use	Shrinkage and Loss	
		<i>1,000 Cwt</i>	<i>1,000 Cwt</i>	<i>1,000 Cwt</i>	<i>1,000 Cwt</i>	<i>1,000 Cwt</i>	<i>1,000 Cwt</i>
ND	2002	23,460	5,500	2,223	450	2,650	20,360
	2003	27,440	8,300	1,995	390	3,700	23,350
	2004	26,765	7,200	1,755	240	2,825	23,700
	2005	20,500	2,800				
OH <sup>2</sup>	2002	902		95	2	11	889
	2003	1,097		76	6	40	1,051
	2004	1,080		71	6	33	1,041
	2005						
OR	2002	24,936	5,000	1,021	266	1,386	23,284
	2003	20,991	5,500	883	275	1,290	19,426
	2004	19,775	3,900	892	241	1,264	18,270
	2005	22,023	5,000				
PA <sup>2</sup>	2002	2,128		238	36	78	2,014
	2003	3,375		228	42	287	3,046
	2004	2,640		253	39	216	2,385
	2005						
WA	2002	92,340	16,500	3,912	300	6,500	85,540
	2003	93,150	15,000	4,000	280	5,600	87,270
	2004	93,810	15,500	3,850	240	5,600	87,970
	2005	95,480	17,000				
WI	2002	30,750	3,600	1,782	265	1,738	28,747
	2003	32,800	4,200	1,562	300	2,750	29,750
	2004	30,450	3,800	1,420	260	1,985	28,205
	2005	27,880	3,700				
Other Sts	2002		1,340				
	2003		1,900				
	2004		1,650				
	2005		350				
15 Sts <sup>3</sup>	2002	407,085	83,040	24,044	5,274	28,951	372,860
	2003	403,181	85,000	23,035	5,231	32,957	364,993
	2004	403,587	88,550	21,348	4,529	35,404	363,654
	2005	372,581	72,950				
Fall Sts	2002	413,581		24,496	5,399	29,386	378,796
	2003	410,588		23,387	5,254	33,579	371,755
	2004	410,253		21,639	4,549	35,923	369,781
	2005	381,026					

<sup>1</sup> Missing stocks combined into "Other Sts" to avoid disclosure of individual operations.

<sup>2</sup> Stock estimates discontinued in crop year 2005.

<sup>3</sup> 13 storage States starting in crop year 2005.

**Fall Potatoes: Farm Marketings, Selected States,  
2002-2004 Marketing Years**

State	Crop Year	Jul	Aug	Sep	Oct	Nov	Dec	Jan	Feb	Mar	Apr	May	Jun	Jul
		<i>Percent</i>	<i>Percent</i>	<i>Percent</i>	<i>Percent</i>	<i>Percent</i>	<i>Percent</i>	<i>Percent</i>	<i>Percent</i>	<i>Percent</i>	<i>Percent</i>	<i>Percent</i>	<i>Percent</i>	<i>Percent</i>
CA	2002				11	11	11	10	10	10	13	8	9	7
	2003				13	12	15	14	9	8	10	7	12	
	2004				8	9	21	13	8	14	12	7	8	
CO	2002			4	9	10	10	11	9	11	11	10	7	8
	2003			6	8	9	10	11	9	12	14	8	7	6
	2004			5	7	9	10	10	8	12	10	11	11	7
ID	2002		4	8	11	10	7	8	8	10	11	10	7	6
	2003		4	8	10	11	8	7	8	10	11	11	6	6
	2004		6	9	10	11	7	6	6	9	10	9	10	7
ME	2002		2	7	11	9	8	10	9	10	15	10	5	4
	2003		1	5	11	8	9	10	10	11	15	10	6	4
	2004		1	9	6	7	10	10	10	11	15	10	7	4
MI	2002	4	7	11	12	13	8	6	8	12	13	6		
	2003	1	7	8	11	11	11	10	8	13	12	8		
	2004	1	10	11	11	12	12	11	8	10	9	5		
MN	2002		9	9	9	7	8	7	9	7	10	12	8	5
	2003		9	10	10	9	6	5	6	9	10	9	9	8
	2004		9	8	8	6	6	7	8	13	7	9	10	9
NY	2002		8	17	16	14	11	14	10	7	3			
	2003		1	8	29	20	17	8	7	6	4			
	2004		4	16	19	16	13	10	9	8	5			
ND	2002		2	22	10	9	6	9	4	8	10	13	5	2
	2003			23	10	6	7	6	9	7	11	10	9	2
	2004		1	20	9	6	6	8	7	11	11	7	8	6
OR	2002		11	9	21	9	9	6	9	8	6	7	3	2
	2003		10	9	19	9	8	7	7	7	8	8	5	3
	2004		12	11	16	8	6	4	9	10	9	8	4	3
PA	2002		18	14	17	14	10	9	6	5	4	3		
	2003		15	18	14	11	10	10	9	6	5	2		
	2004	1	18	16	15	8	15	8	6	5	6	2		
WA	2002		17	12	19	9	5	5	7	6	6	7	6	1
	2003		16	12	22	7	6	5	7	6	6	7	5	1
	2004		18	14	21	6	5	5	7	6	6	6	5	1
WI	2002	1	7	12	12	12	9	9	8	12	10	6	2	
	2003	1	6	12	12	12	10	9	10	10	9	7	2	
	2004		6	14	12	12	9	9	9	11	10	6	2	
US	2002		8	10	13	10	7	8	8	9	9	9	6	3
	2003		7	10	14	10	8	7	8	9	10	9	5	3
	2004		9	11	13	9	7	7	7	9	9	8	7	4

## May Potato Stocks Down 17 Percent from Last Year

The 13 major potato States held 73.0 million cwt of potatoes in storage May 1, 2006, down 17 percent from last year and 14 percent below May 1, 2004, for comparable States. Ohio and Pennsylvania were dropped from the potato stocks program starting with the 2005 storage season. Potatoes in storage account for 20 percent of the 2005 fall storage States' production, down 2 percentage points from last year.

Disappearance of 300 million cwt from the start of harvest to May 1, is down 4 percent from last year for comparable States. Shrink and loss, at 23.2 million cwt, is down 21 percent from last year for comparable States.

Processors have used 150 million cwt of 2005 crop potatoes so far this season, down 2 percent from a year ago and 3 percent below 2 years ago. Idaho and Malheur County, Oregon, total processing decreased 2 percent from a year ago and Washington and the rest of Oregon total processing dropped 3 percent from last season. Dehydrating usage accounts for 30.8 million cwt of the total processing, down 8 percent from last year and 11 percent below the same date in 2004.

Comparisons by region will not be made in this narrative to avoid disclosure of individual operations. Comparisons for individual States are as follows. Idaho's potato stocks are down 22 percent from last year, while Maine's sheds held 8 percent less than last year, and Colorado's stocks dropped 28 percent from last season. Stocks in Wisconsin decreased 3 percent from 2005. North Dakota's potato stocks dropped 61 percent from last year, while Minnesota's stocks are 47 percent below last year, and California's potato sheds held 20 percent less than in 2005. Montana, Nebraska, and New York's potato stocks combined decreased 18 percent from last year. Michigan potato stocks are unchanged from the same date in 2005. Washington and Oregon are the only States where potato stocks have increased from the same date in 2005, with stocks up 10 percent and 28 percent, respectively.

**Potatoes: Shrinkage and Loss, 15 Fall Storage States, 2002-2005**

Crop Year	To Dec 1	To Jan 1	To Feb 1	To Mar 1	To Apr 1	To May 1	Total Jun 1	Season
	<i>Million Cwt</i>	<i>Million Cwt</i>	<i>Million Cwt</i>	<i>Million Cwt</i>	<i>Million Cwt</i>	<i>Million Cwt</i>	<i>Million Cwt</i>	<i>Million Cwt</i>
2002	15.5	18.2	20.5	22.4	24.2	25.8	27.2	29.0
2003	15.0	17.4	20.5	22.6	25.4	27.5	29.9	33.0
2004	15.5	19.1	22.0	24.8	27.3	29.7	32.5	35.4
2005 <sup>1</sup>	13.9	16.2	18.1	20.1	21.6	23.2		

<sup>1</sup> 13 fall storage States.

## Reliability of May 1 Stocks Estimates

To assist users in evaluating the reliability of the May 1 stocks estimate, the “Root Mean Square Error,” a statistical measure based on past performance, is computed. The deviation between the May 1 stocks estimate and the final estimate is expressed as a percentage of the final estimate. The average of squared percentage deviations for the latest 20-year period is computed. The square root of the average becomes statistically the “Root Mean Square Error.” Probability statements can be made concerning expected differences in the current estimate relative to the final end-of-season estimate, assuming that factors affecting this year’s estimate are not different from those influencing recent years.

The “Root Mean Square Error” for the May 1 stocks estimate is 6.5 percent. This means that chances are 2 out of 3 that the current estimate of 73.0 million cwt will not be above or below the final estimate by more than 6.5 percent or approximately 4.7 million cwt. Chances are 9 out of 10 (90 percent confidence level) that the difference will not exceed 11.3 percent or approximately 8.2 million cwt.

The 10-year (1995-2004) record of differences between the May 1 stocks estimates and the final estimates averaged 2.7 million cwt, ranging from 9.9 million cwt above the final to 5.7 million cwt below the final. During the 10-year period, the May 1 estimate has been below the final estimate 7 years and above 3 years.

**Fall Potato Stocks: Preliminary and Final May 1 Stocks,  
United States, 1995-2005**

Crop Year	Preliminary Stocks	% of Final	Final Stocks
	<i>1,000 Cwt</i>	<i>Percent</i>	<i>1,000 Cwt</i>
1995	72,210	95.2	75,870
1996	100,780	97.6	103,210
1997	87,113	93.8	92,840
1998	87,640	99.7	87,895
1999	85,670	98.6	86,915
2000	111,425	102.1	109,160
2001	91,140	112.2	81,200
2002	83,180	100.2	83,040
2003	84,800	99.8	85,000
2004	86,990	98.2	88,550
2005	72,950		



## ACCESS TO REPORTS!!

---

For your convenience, there are several ways to obtain NASS reports, data products, and services:

### INTERNET ACCESS

All NASS reports are available free of charge on the worldwide Internet. For access, connect to the Internet and go to the NASS Home Page at: [www.nass.usda.gov](http://www.nass.usda.gov).

### E-MAIL SUBSCRIPTION

All NASS reports are available by subscription free of charge direct to your e-mail address. Starting with the NASS Home Page at [www.nass.usda.gov](http://www.nass.usda.gov), under the right navigation, *Receive reports by Email*, click on **National** or **State**. Follow the instructions on the screen.

-----

### PRINTED REPORTS OR DATA PRODUCTS

**CALL OUR TOLL-FREE ORDER DESK: 800-999-6779 (U.S. and Canada)**  
**Other areas, please call 703-605-6220      FAX: 703-605-6900**  
**(Visa, MasterCard, check, or money order acceptable for payment.)**

-----

### ASSISTANCE

For **assistance** with general agricultural statistics or further information about NASS or its products or services, contact the **Agricultural Statistics Hotline** at **800-727-9540**, 7:30 a.m. to 4:00 p.m. ET, or e-mail: [nass@nass.usda.gov](mailto:nass@nass.usda.gov).

The U.S. Department of Agriculture (USDA) prohibits discrimination in all its programs and activities on the basis of race, color, national origin, age, disability, and where applicable, sex, marital status, familial status, parental status, religion, sexual orientation, genetic information, political beliefs, reprisal, or because all or part of an individual's income is derived from any public assistance program. (Not all prohibited bases apply to all programs.) Persons with disabilities who require alternative means for communication of program information (Braille, large print, audiotape, etc.) should contact USDA's TARGET Center at (202) 720-2600 (voice and TDD).

To file a complaint of discrimination, write to USDA, Director, Office of Civil Rights, 1400 Independence Avenue, S.W., Washington, D.C. 20250-9410, or call (800) 795-3272 (voice) or (202) 720-6382 (TDD). USDA is an equal opportunity provider and employer.