



NASS

FACT FINDERS FOR AGRICULTURE
UNITED STATES DEPARTMENT OF AGRICULTURE

Washington, D.C.

Potato Stocks

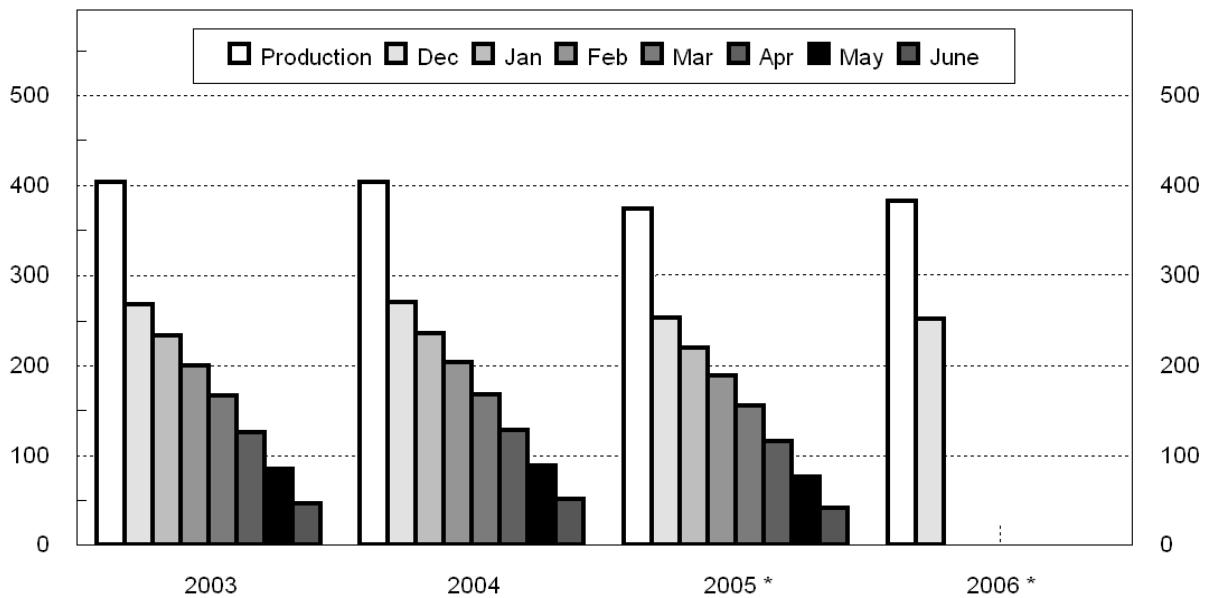
Released December 15, 2006, by the National Agricultural Statistics Service (NASS), Agricultural Statistics Board, U.S. Department of Agriculture. For information on *Potato Stocks* call Cathy Scherrer at (202) 720-4285, office hours 7:00 a.m. to 3:30 p.m. ET.

Potato Stocks Down 1 Percent from Last Year

The 13 major potato States held 252 million cwt of potatoes in storage December 1, 2006, down 1 percent from last year and 6 percent below December 1, 2004, for comparable States. Ohio and Pennsylvania were dropped from the potato stocks program starting with the 2005 storage season. Potatoes in storage account for 66 percent of the 2006 fall storage States' production, down 2 percentage points from last year. Klamath Basin stocks have been added to the potato stocks program starting with December 2006 and total 4.0 million cwt. Klamath Basin includes California and Klamath County, Oregon, potato stocks. Potato disappearance, at 130 million cwt, is up 8 percent from last year. Season to date shrink and loss, at 14.0 million cwt, is up 10 percent from last year. Processors in the 9 major States have used 72.3 million cwt of potatoes this season, up 10 percent from a year ago and 2 percent above 2 years ago. Dehydrating usage accounts for 12.9 million cwt of the total processing, up 8 percent from last year but 11 percent below the same date in 2004.

Fall Potatoes: Production and Stocks 15 Storage States

Mil Cwt



Production by crop year. Stocks by months following harvest.

* 13 Storage States for 2005 and 2006.

Table of Contents

	Page
December Stocks	3
Monthly Processing, 9 States	4
Stocks by Type	4
Area, Yield, and Production	
By Season and State	5
By State and United States	8
Disposition and December Stocks 2002-2005	10
Production, Sold, Not Sold, and Kept for Seed, United States	12
Shrinkage and Loss	12
Potato Objective Yield Survey Results	12
Potato Size and Grade	14
Farm Marketings	17
Stocks Comment	18
Production Comment	19
Reliability	20

Fall Potatoes: Production and Stocks, 13 Major States, December 1, 2005-2006 ¹

State	Crop of 2005			Crop of 2006		
	Prod	Stocks Dec 1, 2005	% of Prod	Prod	Stocks Dec 1, 2006	% of Prod
	<i>1,000 Cwt</i>	<i>1,000 Cwt</i>	<i>Percent</i>	<i>1,000 Cwt</i>	<i>1,000 Cwt</i>	<i>Percent</i>
CA	3,306	1,600	48	3,783	1,800	48
CO	22,910	17,200	75	22,686	17,200	76
ID	118,288	85,000	72	121,820	84,000	69
ME	15,455	12,500	81	18,270	14,700	80
MI	13,910	7,900	57	14,190	8,200	58
MN	17,630	13,500	77	20,400	12,000	59
MT	3,445	3,400	99	3,413	3,400	100
NE	8,245	5,600	68	8,589	5,800	68
NY	5,226	2,900	55	5,700	2,800	49
ND	20,500	14,000	68	25,480	17,300	68
OR	22,023	19,000	86	18,533	16,000	86
WA	95,480	52,500	55	89,900	49,000	55
WI	27,880	18,700	67	29,370	20,100	68
13 Sts	374,298	253,800	68	382,134	252,300	66
Klamath Basin ²					4,000	

¹ Stocks include processor holdings and most of the seed to plant following year's crop. Seed usage for all seasons in 2006 totaled 25.6 million cwt.

² Estimates began in 2006. Includes potato stocks in CA and Klamath Co. OR.

Fall Potatoes: Production and Stocks, 15 Major States, 1997-2006

Crop Year	Production	Dec 1	Jan 1	Feb 1	Mar 1	Apr 1	May 1	Jun 1 ¹
	<i>1,000 Cwt</i>	<i>1,000 Cwt</i>	<i>1,000 Cwt</i>	<i>1,000 Cwt</i>	<i>1,000 Cwt</i>	<i>1,000 Cwt</i>	<i>1,000 Cwt</i>	<i>1,000 Cwt</i>
1997	413,513	278,830	246,550	212,562	175,870	134,190	92,840	
1998	423,170	280,910	246,230	209,640	173,650	131,220	87,895	50,270
1999	420,567	275,100	239,910	207,150	169,620	128,410	86,915	47,220
2000	458,827	310,300	275,270	234,260	197,670	153,520	109,160	61,270
2001	387,033	258,750	224,680	192,090	158,590	119,950	81,200	42,990
2002	407,085	264,485	231,490	199,020	165,210	125,770	83,040	45,880
2003	403,181	267,900	233,590	200,230	166,280	126,110	85,000	46,020
2004	403,587	271,100	236,700	203,490	168,020	128,900	88,550	51,700
2005 ²	374,298	253,800	220,500	189,100	155,500	115,700	75,900	41,560
2006 ²	382,134	252,300						

¹ Data not available prior to 1998.

² 13 major States.

NOTE: Stocks are defined as the quantity (whether sold or not) remaining in storage for all purposes and uses, including seed potatoes that are not yet moved, and shrinkage, waste, and other losses that occur after the date of each report. Sales of fall potatoes for all purposes for the past 5 years averaged 91.0 percent of the total fall production. Shrinkage, loss, and home use account for the remaining 9.0 percent.

Potatoes: Quantity Used for Processing, 9 States, 2004-2006 ¹

State and Crop Year	Dec 1	Jan 1	Feb 1	Mar 1	Apr 1	May 1	Jun 1	Season
	<i>1,000 Cwt</i>	<i>1,000 Cwt</i>	<i>1,000 Cwt</i>	<i>1,000 Cwt</i>	<i>1,000 Cwt</i>	<i>1,000 Cwt</i>	<i>1,000 Cwt</i>	<i>1,000 Cwt</i>
ID & OR-Mal								
2004	24,360	30,840	36,820	44,610	51,000	58,090	65,800	84,600
2005	22,840	29,300	35,970	43,300	50,820	57,830	65,030	77,360
2006	26,130							
ME ²								
2004	1,540	1,970	2,600	3,135	3,700	4,340	4,910	6,590
2005	1,365	1,880	2,485	3,090	3,800	4,450	5,130	6,825
2006	1,755							
WA & OR-Oth								
2004	32,305	38,130	43,570	50,730	57,140	63,855	71,355	78,680
2005	30,310	35,895	40,545	48,290	55,320	61,855	69,360	78,550
2006	30,980							
Other Sts ³								
2004	12,490	15,000	17,965	20,910	24,150	27,480	30,945	41,175
2005	11,055	14,070	17,005	19,895	22,520	25,270	27,740	35,535
2006	13,465							
Total								
2004	70,695	85,940	100,955	119,385	135,990	153,765	173,010	211,045
2005	65,570	81,145	96,005	114,575	132,460	149,405	167,260	198,270
2006	72,330							
Dehydrated ⁴								
2004	14,525	18,540	21,875	25,970	30,020	33,685	38,505	47,805
2005	11,920	15,655	19,225	22,765	26,605	30,065	34,130	41,625
2006	12,860							

¹ Total quantity received and used for processing regardless of the State in which the potatoes were produced. Amount excludes quantities used for potato chips in ME and WI.

² Includes Maine grown potatoes only.

³ CO, MN, NV, ND, and WI.

⁴ Dehydrated products except starch and flour. Included in above totals. Includes CO, ID, NV, ND, OR, WA, and WI.

**Fall Potatoes: Stocks by Type as Percent of Total Stocks,
10 Selected States, December 1, 2005-2006**

State	Potato Types							
	Reds		Round Whites		Long Whites		Russets	
	2005	2006	2005	2006	2005	2006	2005	2006
	<i>Percent</i>	<i>Percent</i>	<i>Percent</i>	<i>Percent</i>	<i>Percent</i>	<i>Percent</i>	<i>Percent</i>	<i>Percent</i>
CO	4	3	11	13			85	84
ID	3	2			2	2	95	96
ME	2	3	42	37	3		53	60
MI	1	1	87	87			12	12
MN	7	12	6	4		2	87	82
NY	5	5	90	90			5	5
ND	13	15	18	17	4	2	65	66
OR	1	1	1	2	2	2	96	95
WA	1	2	1	1	5	5	93	92
WI	4	4	38	14			58	82
10 St Avg	3	4	12	10	2	2	83	84

**Potatoes: Area Planted, Harvested, Yield, and Production
by Seasonal Group, State, and United States, 2004-2006**

Seasonal Group and State	Area Planted			Area Harvested		
	2004	2005	2006	2004	2005	2006
	<i>1,000 Acres</i>	<i>1,000 Acres</i>	<i>1,000 Acres</i>	<i>1,000 Acres</i>	<i>1,000 Acres</i>	<i>1,000 Acres</i>
Winter ¹						
CA	13.0	14.0	12.0	13.0	14.0	12.0
FL	5.7	6.0	5.7	5.5	5.8	5.5
Total	18.7	20.0	17.7	18.5	19.8	17.5
Spring ¹						
AZ	6.2	4.3	3.9	6.2	4.3	3.9
CA	17.5	15.1	14.9	17.5	15.1	14.9
FL	24.8	23.6	24.1	24.5	23.2	23.7
Hastings	18.2	17.3	18.0	18.0	17.0	17.7
Other FL	6.6	6.3	6.1	6.5	6.2	6.0
NC	17.0	15.5	17.5	13.5	15.0	17.0
TX	11.0	9.5	10.7	10.5	9.1	10.2
Total	76.5	68.0	71.1	72.2	66.7	69.7
State	Yield			Production		
	2004	2005	2006	2004	2005	2006
	<i>Cwt</i>	<i>Cwt</i>	<i>Cwt</i>	<i>1,000 Cwt</i>	<i>1,000 Cwt</i>	<i>1,000 Cwt</i>
Winter ¹						
CA	250	250	260	3,250	3,500	3,120
FL	285	240	250	1,568	1,392	1,375
Total	260	247	257	4,818	4,892	4,495
Spring ¹						
AZ	285	275	300	1,767	1,183	1,170
CA	475	405	420	8,313	6,116	6,258
FL	313	281	294	7,678	6,527	6,962
Hastings	320	280	295	5,760	4,760	5,222
Other FL	295	285	290	1,918	1,767	1,740
NC	200	190	200	2,700	2,850	3,400
TX	210	225	280	2,205	2,048	2,856
Total	314	281	296	22,663	18,724	20,646

¹ Estimates for current year carried forward from an earlier forecast.

Potatoes: Area Planted and Harvested by State, 2004-2006

Seasonal Group and State	Area Planted			Area Harvested		
	2004	2005	2006	2004	2005	2006
	<i>1,000 Acres</i>	<i>1,000 Acres</i>	<i>1,000 Acres</i>	<i>1,000 Acres</i>	<i>1,000 Acres</i>	<i>1,000 Acres</i>
Summer ¹						
AL	2.3	1.6	1.7	1.3	1.3	1.5
CA	7.0	6.2	6.3	7.0	6.2	6.3
CO	5.8	5.0	4.1	5.7	4.9	4.0
DE	3.3	3.3	3.0	3.1	3.1	2.1
IL	5.0	5.7	6.5	4.8	5.5	6.3
KS	3.5	5.1	7.0	3.4	5.0	6.6
MD	4.7	3.5	4.0	4.6	3.4	2.8
MO	6.9	6.5	7.9	6.2	6.3	7.5
NJ	2.3	2.1	2.4	2.2	2.1	2.4
NM ²	1.2			1.0		
TX	10.4	9.4	10.5	9.6	8.7	9.7
VA	6.0	5.0	6.0	5.0	4.9	5.6
Total	58.4	53.4	59.4	53.9	51.4	54.8
Fall						
CA	7.6	7.6	7.8	7.6	7.6	7.8
CO	65.0	58.2	59.9	64.3	58.0	59.7
ID	355.0	325.0	330.0	353.0	323.0	328.0
10 SW Co	25.0	21.0	20.0	25.0	21.0	20.0
Other ID	330.0	304.0	310.0	328.0	302.0	308.0
IN ³	3.4			3.2		
ME	63.5	57.5	58.5	61.5	56.2	58.0
MA	2.6	2.5	3.1	2.5	2.4	3.1
MI	43.0	43.0	43.5	42.0	42.8	43.0
MN	47.0	46.0	51.0	44.0	43.0	48.0
MT	10.7	10.7	10.6	10.6	10.6	10.5
NE	22.0	19.5	19.5	21.6	19.4	19.3
NV	6.7	5.5	6.6	6.7	5.5	6.6
NM ²	4.0	4.7	5.0	4.0	4.2	5.0
NY	20.0	20.5	20.6	19.2	20.1	19.0
ND	105.0	92.0	100.0	101.0	82.0	98.0
OH	3.7	3.7	3.3	3.6	3.6	3.1
OR	37.0	37.3	35.0	37.0	37.1	35.0
Malheur	5.2	3.8	3.5	5.2	3.8	3.5
Other OR	31.8	33.5	31.5	31.8	33.3	31.5
PA	12.0	11.5	11.0	11.0	11.0	10.8
RI	0.5	0.5	0.5	0.5	0.5	0.5
WA	160.0	154.0	156.0	159.0	154.0	155.0
WI	71.0	68.0	66.0	70.0	68.0	66.0
Total	1,039.7	967.7	987.9	1,022.3	949.0	976.4
US	1,193.3	1,109.1	1,136.1	1,166.9	1,086.9	1,118.4

¹ Estimates for current year carried forward from an earlier forecast.

² Summer potatoes combined with fall potatoes in 2005.

³ Estimates discontinued in 2005.

Potatoes: Yield and Production by State, 2004-2006

Seasonal Group and State	Yield			Production		
	2004	2005	2006	2004	2005	2006
	<i>Cwt</i>	<i>Cwt</i>	<i>Cwt</i>	<i>1,000 Cwt</i>	<i>1,000 Cwt</i>	<i>1,000 Cwt</i>
Summer ¹						
AL	175	150	170	228	195	255
CA	350	355	350	2,450	2,201	2,205
CO	350	375	370	1,995	1,838	1,480
DE	260	260	240	806	806	504
IL	415	380	410	1,992	2,090	2,583
KS	400	360	320	1,360	1,800	2,112
MD	260	260	320	1,196	884	896
MO	310	340	280	1,922	2,142	2,100
NJ	270	255	270	594	536	648
NM ²	340			340		
TX	440	465	440	4,224	4,046	4,268
VA	240	210	300	1,200	1,029	1,680
Total	340	342	342	18,307	17,567	18,731
Fall						
CA	480	435	485	3,648	3,306	3,783
CO	370	395	380	23,791	22,910	22,686
ID	374	366	371	131,970	118,288	121,820
10 SW Co	490	470	470	12,250	9,870	9,400
Other ID	365	359	365	119,720	108,418	112,420
IN ³	350			1,120		
ME	310	275	315	19,065	15,455	18,270
MA	320	260	260	800	624	806
MI	325	325	330	13,650	13,910	14,190
MN	430	410	425	18,920	17,630	20,400
MT	335	325	325	3,551	3,445	3,413
NE	430	425	445	9,288	8,245	8,589
NV	430	425	445	2,881	2,338	2,937
NM ²	430	420	420	1,720	1,764	2,100
NY	270	260	300	5,184	5,226	5,700
ND	265	250	260	26,765	20,500	25,480
OH	300	240	320	1,080	864	992
OR	534	594	530	19,775	22,023	18,533
Malheur	470	450	435	2,444	1,710	1,523
Other OR	545	610	540	17,331	20,313	17,010
PA	240	250	260	2,640	2,750	2,808
RI	290	210	250	145	105	125
WA	590	620	580	93,810	95,480	89,900
WI	435	410	445	30,450	27,880	29,370
Total	401	403	401	410,253	382,743	391,902
US	391	390	390	456,041	423,926	435,774

¹ Estimates for current year carried forward from an earlier forecast.

² Summer potatoes combined with fall potatoes in 2005.

³ Estimates discontinued in 2005.

**Potatoes: Area Planted and Harvested by State
and United States, 2004-2006**

State State	Area Planted			Area Harvested		
	2004	2005	2006	2004	2005	2006
	<i>1,000 Acres</i>	<i>1,000 Acres</i>	<i>1,000 Acres</i>	<i>1,000 Acres</i>	<i>1,000 Acres</i>	<i>1,000 Acres</i>
AL	2.3	1.6	1.7	1.3	1.3	1.5
AZ	6.2	4.3	3.9	6.2	4.3	3.9
CA	45.1	42.9	41.0	45.1	42.9	41.0
CO	70.8	63.2	64.0	70.0	62.9	63.7
DE	3.3	3.3	3.0	3.1	3.1	2.1
FL	30.5	29.6	29.8	30.0	29.0	29.2
ID	355.0	325.0	330.0	353.0	323.0	328.0
IL	5.0	5.7	6.5	4.8	5.5	6.3
IN ¹	3.4			3.2		
KS	3.5	5.1	7.0	3.4	5.0	6.6
ME	63.5	57.5	58.5	61.5	56.2	58.0
MD	4.7	3.5	4.0	4.6	3.4	2.8
MA	2.6	2.5	3.1	2.5	2.4	3.1
MI	43.0	43.0	43.5	42.0	42.8	43.0
MN	47.0	46.0	51.0	44.0	43.0	48.0
MO	6.9	6.5	7.9	6.2	6.3	7.5
MT	10.7	10.7	10.6	10.6	10.6	10.5
NE	22.0	19.5	19.5	21.6	19.4	19.3
NV	6.7	5.5	6.6	6.7	5.5	6.6
NJ	2.3	2.1	2.4	2.2	2.1	2.4
NM	5.2	4.7	5.0	5.0	4.2	5.0
NY	20.0	20.5	20.6	19.2	20.1	19.0
NC	17.0	15.5	17.5	13.5	15.0	17.0
ND	105.0	92.0	100.0	101.0	82.0	98.0
OH	3.7	3.7	3.3	3.6	3.6	3.1
OR	37.0	37.3	35.0	37.0	37.1	35.0
PA	12.0	11.5	11.0	11.0	11.0	10.8
RI	0.5	0.5	0.5	0.5	0.5	0.5
TX	21.4	18.9	21.2	20.1	17.8	19.9
VA	6.0	5.0	6.0	5.0	4.9	5.6
WA	160.0	154.0	156.0	159.0	154.0	155.0
WI	71.0	68.0	66.0	70.0	68.0	66.0
US	1,193.3	1,109.1	1,136.1	1,166.9	1,086.9	1,118.4

¹ Estimates discontinued in 2005.

**Potatoes: Yield and Production by State
and United States, 2004-2006**

State State	Yield ¹			Production		
	2004	2005	2006	2004	2005	2006
	<i>Cwt</i>	<i>Cwt</i>	<i>Cwt</i>	<i>1,000 Cwt</i>	<i>1,000 Cwt</i>	<i>1,000 Cwt</i>
AL	175	150	170	228	195	255
AZ	285	275	300	1,767	1,183	1,170
CA	392	353	375	17,661	15,123	15,366
CO	368	393	379	25,786	24,748	24,166
DE	260	260	240	806	806	504
FL	308	273	286	9,246	7,919	8,337
ID	374	366	371	131,970	118,288	121,820
IL	415	380	410	1,992	2,090	2,583
IN ²	350			1,120		
KS	400	360	320	1,360	1,800	2,112
ME	310	275	315	19,065	15,455	18,270
MD	260	260	320	1,196	884	896
MA	320	260	260	800	624	806
MI	325	325	330	13,650	13,910	14,190
MN	430	410	425	18,920	17,630	20,400
MO	310	340	280	1,922	2,142	2,100
MT	335	325	325	3,551	3,445	3,413
NE	430	425	445	9,288	8,245	8,589
NV	430	425	445	2,881	2,338	2,937
NJ	270	255	270	594	536	648
NM	412	420	420	2,060	1,764	2,100
NY	270	260	300	5,184	5,226	5,700
NC	200	190	200	2,700	2,850	3,400
ND	265	250	260	26,765	20,500	25,480
OH	300	240	320	1,080	864	992
OR	534	594	530	19,775	22,023	18,533
PA	240	250	260	2,640	2,750	2,808
RI	290	210	250	145	105	125
TX	320	342	358	6,429	6,094	7,124
VA	240	210	300	1,200	1,029	1,680
WA	590	620	580	93,810	95,480	89,900
WI	435	410	445	30,450	27,880	29,370
US	391	390	390	456,041	423,926	435,774

¹ Derived

² Estimates discontinued in 2005.

**Fall Potatoes: Production, December 1 Stocks, and Farm Disposition,
15 Storage States and Fall Season States, 2003-2006 Crop Years**

State	Crop Year	Production	Stocks Dec 1	Total Used For Fall Seed	Farm Disposition		
					Where Grown		Sold
					Seed, Feed, Home Use	Shrinkage and Loss	
		<i>1,000 Cwt</i>	<i>1,000 Cwt</i>	<i>1,000 Cwt</i>	<i>1,000 Cwt</i>	<i>1,000 Cwt</i>	<i>1,000 Cwt</i>
CA	2003	3,528	2,700	167	1	343	3,184
	2004	3,648	3,000	213	1	292	3,355
	2005	3,306	1,600	226		331	2,975
	2006	3,783	1,800				
CO	2003	23,652	17,500	1,625	1,410	2,507	19,735
	2004	23,791	18,000	1,513	1,300	2,286	20,205
	2005	22,910	17,200	1,498	1,200	1,650	20,060
	2006	22,686	17,200				
ID	2003	123,180	86,000	7,810	1,463	8,900	112,817
	2004	131,970	93,500	7,150	1,250	10,902	119,818
	2005	118,288	85,000	7,260	1,230	7,800	109,258
	2006	121,820	84,000				
ME	2003	17,030	13,500	1,245	215	2,430	14,385
	2004	19,065	15,000	1,231	190	4,900	13,975
	2005	15,455	12,500	1,274	242	1,183	14,030
	2006	18,270	14,700				
MI	2003	15,015	9,200	1,060	265	1,680	13,070
	2004	13,650	8,000	860	194	1,656	11,800
	2005	13,910	7,900	1,056	182	1,728	12,000
	2006	14,190	8,200				
MN	2003	22,330	14,000	1,060	130	1,800	20,400
	2004	18,920	13,000	837	100	1,750	17,070
	2005	17,630	13,500	1,061	140	1,600	15,890
	2006	20,400	12,000				
MT	2003	3,339	3,100	268	160	270	2,909
	2004	3,551	3,500	257	156	276	3,119
	2005	3,445	3,400	242	156	210	3,079
	2006	3,413	3,400				
NE	2003	9,744	6,500	616	194	840	8,710
	2004	9,288	6,300	519	212	906	8,170
	2005	8,245	5,600	515	231	834	7,180
	2006	8,589	5,800				
NY	2003	6,510	2,700	440	100	520	5,890
	2004	5,184	2,300	451	100	513	4,571
	2005	5,226	2,900	453	100	491	4,635
	2006	5,700	2,800				

--continued

**Fall Potatoes: Production, December 1 Stocks, and Farm Disposition,
15 States and Fall Season, 2003-2006 (continued)**

State	Crop Year	Production	Stocks Dec 1	Total Used For Fall Seed	Farm Disposition		
					Where Grown		Sold
					Seed, Feed, Home Use	Shrinkage and Loss	
		<i>1,000 Cwt</i>	<i>1,000 Cwt</i>	<i>1,000 Cwt</i>	<i>1,000 Cwt</i>	<i>1,000 Cwt</i>	<i>1,000 Cwt</i>
ND	2003	27,440	19,400	1,995	390	3,700	23,350
	2004	26,765	19,600	1,794	240	2,825	23,700
	2005	20,500	14,000	1,900	240	1,810	18,450
	2006	25,480	17,300				
OH ¹	2003	1,097	300	76	6	40	1,051
	2004	1,080	200	73	6	33	1,041
	2005						
	2006						
OR	2003	20,991	18,000	883	275	1,290	19,426
	2004	19,775	17,000	955	241	1,264	18,270
	2005	22,023	19,000	837	255	1,392	20,376
	2006	18,533	16,000				
PA ¹	2003	3,375	1,900	228	42	287	3,046
	2004	2,640	1,600	253	39	216	2,385
	2005						
	2006						
WA	2003	93,150	51,000	4,000	280	5,600	87,270
	2004	93,810	50,000	3,850	240	5,600	87,970
	2005	95,480	52,500	3,900	240	6,000	89,240
	2006	89,900	49,000				
WI	2003	32,800	22,100	1,562	300	2,750	29,750
	2004	30,450	20,100	1,360	260	1,985	28,205
	2005	27,880	18,700	1,474	300	1,380	26,200
	2006	29,370	20,100				
15 Sts ²	2003	403,181	267,900	23,035	5,231	32,957	364,993
	2004	403,587	271,100	21,316	4,529	35,404	363,654
	2005	374,298	253,800	21,696	4,516	26,409	343,373
	2006	382,134	252,300				
Fall Sts	2003	410,588		23,387	5,254	33,579	371,755
	2004	410,253		21,593	4,549	35,923	369,781
	2005	382,743		22,338	4,545	27,115	351,083
	2006	391,902					

¹ Stock estimates discontinued in 2005.

² 13 Storage States starting in 2005.

**Potatoes: Production, Sold, Not Sold, and Kept for Seed,
United States, 2001-2006**

Crop Year	Fall Potatoes					Amount Used for Seed All Seasons Following year
	Production	Sold	Sold as % of Prod	Not Sold	Not Sold as % of Prod	
	<i>1,000 Cwt</i>	<i>1,000 Cwt</i>	<i>Percent</i>	<i>1,000 Cwt</i>	<i>Percent</i>	<i>1,000 Cwt</i>
2001	393,631	358,812	91.2	34,819	8.8	28,625
2002	413,581	378,796	91.6	34,785	8.4	28,149
2003	410,588	371,755	90.5	38,833	9.5	26,687
2004	410,253	369,781	90.1	40,472	9.9	24,768
2005	382,743	351,083	91.7	31,660	8.3	25,628
2006	391,902					

Potatoes: Shrinkage and Loss, 15 Fall Storage States, 2003-2006

Crop Year	To Dec 1	To Jan 1	To Feb 1	To Mar 1	To Apr 1	To May 1	Total Jun 1	Season
	<i>Million Cwt</i>	<i>Million Cwt</i>	<i>Million Cwt</i>	<i>Million Cwt</i>	<i>Million Cwt</i>	<i>Million Cwt</i>	<i>Million Cwt</i>	<i>Million Cwt</i>
2003	15.0	17.4	20.5	22.6	25.4	27.5	29.9	33.0
2004	15.5	19.1	22.0	24.8	27.3	29.7	32.5	35.4
2005 ¹	12.7	15.0	16.8	18.4	20.2	22.0	23.7	26.4
2006 ¹	14.0							

¹ 13 Fall Storage States.

2006 Potato Objective Yield Survey

The National Agricultural Statistics Service conducted potato objective yield surveys in the 7 major fall producing States in 2006. These 7 States account for 83 percent of the fall potato production. Sample plots were located in potato fields selected on a random basis using a scientifically designed sampling procedure. Field workers recorded counts and measurements. Survey data from the objective yield counts are presented in the following 2 tables and are provided to show information about the crop and trends in production.

Potatoes: Harvest Loss by Type, Seven Objective Yield States, 2005-2006^{1 2}

State	Crop Year	Reds	Whites	Russets	All Types
		<i>Cwt per Acre</i>	<i>Cwt per Acre</i>	<i>Cwt per Acre</i>	<i>Cwt per Acre</i>
ID	2005			28	28
	2006			31	30
ME	2005	9	15	15	14
	2006		20	23	21
MN	2005	19	10	28	23
	2006	10	28	24	20
ND	2005	15	17	52	37
	2006	13	21	38	28
OR	2005		18	27	26
	2006		18	36	34
WA	2005			22	22
	2006		15	20	19
WI	2005		15	12	13
	2006	24	10	13	14

¹ Potatoes left in the field at time of harvest. Based on counts in potato fields selected for postharvest samples.

² Missing data represents insufficient number of samples.

Potatoes: Number of Hills by Type, Seven Objective Yield States, 2005-2006¹

State	Crop Year	Reds		Whites		Russets	
		Number of Samples	Avg No. Hills per Acre	Number of Samples	Avg No. Hills per Acre	Number of Samples	Avg No. Hills per Acre
ID	2005	5	13,665	9	12,740	265	12,502
	2006	6	13,811	4	12,019	276	12,480
ME	2005	7	13,005	66	12,240	79	9,007
	2006	5	14,532	70	12,689	64	10,208
MN	2005	44	11,272	8	11,011	94	12,589
	2006	36	12,331	10	12,158	84	12,498
ND	2005	20	9,540	40	10,516	101	11,938
	2006	21	11,257	42	10,511	78	11,977
OR	2005	3	15,278	22	13,727	80	13,879
	2006			21	14,496	95	13,239
WA	2005	5	15,184	14	15,193	167	15,009
	2006	13	16,358	27	13,801	151	14,409
WI	2005	15	15,501	33	15,319	80	13,119
	2006	13	15,372	36	14,717	73	12,973

¹ Based on row measurements and counts in potato fields selected for objective yield samples.

Potato Size and Grade

Size and grade measurements came from potatoes harvested in the objective yield survey sample plots. Potatoes were harvested from six hills per sample randomly selected in each State using a scientifically designed sampling procedure. Potatoes were sent to laboratories for sizing and grading according to accepted U.S. fresh grading standards. The following tables contain percent measurements as they actually occurred.

Grading Categories of Potatoes ¹

Type and State	No. 1 2 Inch Minimum ²		No. 2 or Processing Usable 1 1/2 Inch Minimum ³		Cull ⁴		Total	
	2005	2006	2005	2006	2005	2006	2005	2006
	<i>Percent</i>	<i>Percent</i>	<i>Percent</i>	<i>Percent</i>	<i>Percent</i>	<i>Percent</i>	<i>Percent</i>	<i>Percent</i>
Round Red Potatoes								
MN	70.7	66.3	20.6	24.5	8.7	9.2	100.0	100.0
Round White Potatoes								
ME ⁵	83.2	78.1	8.1	9.6	8.7	12.3	100.0	100.0
WI	75.5	80.5	24.1	19.2	0.4	0.3	100.0	100.0
Long Potatoes: (Russet and Shepody)								
ID ⁶	74.8	77.0	24.0	21.8	1.2	1.2	100.0	100.0
ME ⁵	74.8	62.9	15.3	20.3	9.9	16.8	100.0	100.0
MN	72.2	70.7	22.2	19.9	5.6	9.4	100.0	100.0
ND	72.1	65.8	19.0	23.1	8.9	11.1	100.0	100.0
OR	77.7	75.3	21.2	23.7	1.1	1.0	100.0	100.0
WA	81.7	80.2	17.1	18.0	1.2	1.8	100.0	100.0
WI	81.3	80.8	18.6	18.3	0.1	0.9	100.0	100.0

¹ Gross yield basis.

² Potatoes which meet the requirements for US #1, as stated in United States Standards for Grades of Potatoes, United States Department of Agriculture, Agricultural Marketing Service.

³ Potatoes which meet the requirements for US #2, as stated in United States Standards for Grades of Potatoes, United States Department of Agriculture, Agricultural Marketing Service.

⁴ Potatoes not meeting the requirements for US #1 or US #2, as stated in United States Standards for Grades of Potatoes, United States Department of Agriculture, Agricultural Marketing Service.

⁵ Percent of net yield - adjusted for field loss.

⁶ Russets only.

Round Potatoes: Size Categories ¹

Type State and Year	1 1/2	1 7/8	2	2 1/4	2 1/2	3 1/2	4 Inch and over	Total
	- 1 7/8	- 2	- 2 1/4	- 2 1/2	- 3 1/2	- 4		
	Inches							
	<i>Percent</i>	<i>Percent</i>	<i>Percent</i>	<i>Percent</i>	<i>Percent</i>	<i>Percent</i>	<i>Percent</i>	<i>Percent</i>
2005								
Red Potatoes								
MN	6.3	5.1	14.4	19.7	52.1	2.1	0.3	100.0
White Potatoes								
ME ²	2.3	2.8	8.7	15.2	61.5	8.5	1.0	100.0
WI	3.4	2.4	8.9	12.0	63.1	9.9	0.3	100.0
2006								
Red Potatoes								
MN	5.2	3.4	12.8	19.9	57.1	1.2	0.4	100.0
White Potatoes								
ME ²		2.1	10.8	18.5	63.7	4.2	0.7	100.0
WI	3.0	2.8	8.6	13.4	62.8	8.1	1.3	100.0

¹ Gross yield basis.

² Percent of net yield - adjusted for field loss.

Maine Long Potatoes (Russet & Shepody): Size Categories ¹

Crop Year	1 1/2 -1 7/8	1 7/8 -2	2 in. or 4-6	6-8	8-10	10-12	12-14	14 and Over	Total
	Inches			Ounce					
	Percent	Percent	Percent	Percent	Percent	Percent	Percent	Percent	Percent
2005	4.4	3.9	31.3	18.4	15.7	10.0	5.9	10.4	100.0
2006	5.5	6.3	32.7	18.6	13.4	8.3	5.5	9.7	100.0

¹ Percent of net yield - adjusted for field loss.

Long Potatoes (Russet & Shepody): Size Categories ¹

State and Year	1 1/2 -1 5/8	1 5/8 -1 7/8	1 7/8 -2	2 in. or 4-6	6	7	8	9	10	11	12	13	14 and Over	Total
	Inches				Ounce									
	Percent	Percent	Percent	Percent	Percent	Percent	Percent	Percent	Percent	Percent	Percent	Percent	Percent	Percent
2005														
ID ²	1.9	7.2	4.2	25.6	9.2	8.9	7.7	6.7	5.6	4.5	4.0	2.6	11.9	100.0
MN	1.8	8.0	5.6	29.3	11.7	10.3	8.0	6.4	4.6	4.4	2.9	2.0	5.0	100.0
ND	1.4	6.7	4.5	25.3	11.2	11.1	8.0	7.7	4.9	4.6	3.8	2.4	8.4	100.0
OR	2.0	4.8	3.4	23.8	9.0	9.1	8.2	7.4	5.4	4.7	4.3	3.3	14.6	100.0
WA	0.8	3.4	2.5	22.5	8.6	9.4	7.9	7.3	6.3	5.2	5.1	3.8	17.2	100.0
WI	1.1	5.9	4.8	27.2	10.0	9.3	8.5	7.0	5.8	4.8	4.1	3.0	8.5	100.0
2006														
ID ²	1.6	6.8	3.6	26.1	9.6	9.0	7.0	6.4	5.3	4.7	3.5	3.1	13.3	100.0
MN	1.5	6.3	5.4	25.8	10.8	9.5	8.5	6.6	5.3	4.6	3.1	3.3	9.3	100.0
ND	1.0	6.6	4.8	28.0	10.8	9.1	8.4	6.3	5.2	4.7	3.8	2.3	9.0	100.0
OR	1.7	5.3	3.1	21.9	8.4	9.8	7.7	6.7	7.1	4.9	3.9	3.6	15.9	100.0
WA	0.9	4.3	2.5	23.6	9.0	9.6	8.7	7.3	6.2	5.2	4.5	2.7	15.5	100.0
WI	0.8	5.2	4.5	28.1	11.2	9.1	8.3	7.6	5.3	4.4	4.3	2.7	8.5	100.0

¹ Gross yield basis.

² Russets only.

**Fall Potatoes: Farm Marketings, Selected States,
2003-2005 Marketing Years**

State	Crop Year	Jul	Aug	Sep	Oct	Nov	Dec	Jan	Feb	Mar	Apr	May	Jun	Jul
		<i>Percent</i>	<i>Percent</i>	<i>Percent</i>	<i>Percent</i>	<i>Percent</i>	<i>Percent</i>	<i>Percent</i>	<i>Percent</i>	<i>Percent</i>	<i>Percent</i>	<i>Percent</i>	<i>Percent</i>	<i>Percent</i>
CA	2003				13	12	15	14	9	8	10	7	12	
	2004				8	9	21	13	8	14	12	7	8	
	2005				4	14	22	10	11	12	12	8	7	
CO	2003			6	8	9	10	11	9	12	14	8	7	6
	2004			5	7	9	10	10	8	12	10	11	11	7
	2005			5	8	10	10	10	8	11	10	12	10	6
ID	2003		4	8	10	11	8	7	8	10	11	11	6	6
	2004		6	9	10	11	7	6	6	9	10	9	10	7
	2005		2	11	13	8	7	8	7	11	10	10	6	7
ME	2003		1	5	11	8	9	10	10	11	15	10	6	4
	2004		1	9	6	7	10	10	10	11	15	10	7	4
	2005			5	11	8	9	10	9	12	15	10	6	5
MI	2003	1	7	8	11	11	11	10	8	13	12	8		
	2004	1	10	11	11	12	12	11	8	10	9	5		
	2005	1	8	11	13	12	12	12	10	10	8	3		
MN	2003		9	10	10	9	6	5	6	9	10	9	9	8
	2004		9	8	8	6	6	7	8	13	7	9	10	9
	2005		7	6	4	7	15	12	12	14	9	3	6	5
NY	2003		1	8	29	20	17	8	7	6	4			
	2004		4	16	19	16	13	10	9	8	5			
	2005		2	14	14	12	13	10	12	14	7	2		
ND	2003			23	10	6	7	6	9	7	11	10	9	2
	2004		1	20	9	6	6	8	7	11	11	7	8	6
	2005		2	25	13	5	9	9	9	8	10	7	2	1
OR	2003		10	9	19	9	8	7	7	7	8	8	5	3
	2004		12	11	16	8	6	4	9	10	9	8	4	3
	2005		17	10	13	5	7	5	8	9	10	8	4	4
PA ¹	2003		15	18	14	11	10	10	9	6	5	2		
	2004	1	18	16	15	8	15	8	6	5	6	2		
	2005													
WA	2003		16	12	22	7	6	5	7	6	6	7	5	1
	2004		18	14	21	6	5	5	7	6	6	6	5	1
	2005		14	13	23	7	6	4	6	7	7	7	5	1
WI	2003	1	6	12	12	12	10	9	10	10	9	7	2	
	2004		6	14	12	12	9	9	9	11	10	6	2	
	2005	1	6	16	11	10	10	9	9	10	8	8	2	
US	2003		7	10	14	10	8	7	8	9	10	9	5	3
	2004		9	11	13	9	7	7	7	9	9	8	7	4
	2005		7	12	14	8	8	7	8	10	9	8	5	4

¹ Farm Marketing estimates discontinued in 2005.

December Potato Stocks Down 1 Percent from Last Year

The 13 major potato States held 252 million cwt of potatoes in storage December 1, 2006, down 1 percent from last year and 6 percent below December 1, 2004, for comparable States. Ohio and Pennsylvania were dropped from the potato stocks program starting with the 2005 storage season. Potatoes in storage account for 66 percent of the 2006 fall storage States' production, down 2 percentage point from last year. Klamath Basin stocks have been added to the potato stocks program starting with December 2006 and total 4.0 million cwt. Klamath Basin includes California and Klamath County, Oregon, potato stocks.

Disappearance of 130 million cwt from the start of harvest to December 1, is up 8 percent from last year. Shrink and loss, at 14.0 million cwt, is up 10 percent from the previous year.

Processors have used 72.3 million cwt of 2006 crop potatoes so far this season, up 10 percent from a year ago and 2 percent above 2 years ago. Idaho and Malheur County, Oregon, total processing increased 14 percent from a year ago, Maine's total processing was 29 percent above the same date in 2005, and Washington and the rest of Oregon total processing was up 2 percent from last season. Dehydrating usage accounts for 12.9 million cwt of the total processing, up 8 percent from last year but 11 percent below the same date in 2004.

Western States held 171 million cwt of potatoes in storage on December 1, down 4 percent from last year. Idaho's potato stocks are down 1 percent from last year, Washington's potato sheds held 7 percent less than last year, and Oregon's stocks declined 16 percent from last season. Colorado and Montana's December potato stocks were unchanged from 2005. California's potato stocks are up 13 percent from last year.

Central States accounted for 63.4 million cwt of potato stocks on December 1, up 6 percent from last year. Wisconsin's potato stocks increased 7 percent from last year, North Dakota's sheds held 24 percent more than the previous year, and Michigan and Nebraska's stocks are both 4 percent above 2005. Minnesota's potato stocks declined 11 percent from the same date in 2005.

Eastern States stored 17.5 million cwt of potatoes on December 1, up 14 percent from last year. Maine's potato sheds held 18 percent more than last year, while New York's potato stocks decreased 3 percent from a year ago.

Fall Potato Production Up Less than 1 Percent from November

Production of fall potatoes for 2006 is forecast at 392 million cwt, up less than 1 percent from last month and 2 percent above last year. Area harvested, at 976,400 acres, is virtually unchanged from November but increased 3 percent from last year. The average yield is forecast at 401 cwt per acre, up 1 cwt from last month but 2 cwt below the record high set last year.

Western States production is forecast at 265 million cwt, virtually unchanged from the November forecast but down 2 percent from last year. Area harvested, at 607,600 acres, increased 1 percent from last year but the average yield of 436 cwt per acre is down 13 cwt from 2005. Idaho's potato production, forecast at 122 million cwt, is 3 percent above last year. Yield is expected to be 371 cwt per acre, 5 cwt above last year. If realized, this would be the second highest yield on record, 3 cwt below the record high set in 2004. Extremely hot weather in late July caused some concern, but crop progress was advanced enough that yields were not substantially affected. Production in Washington is forecast at 89.9 million cwt, 6 percent below last year. If realized, this will be the lowest production since 1997. Colorado's production is expected to decrease 1 percent from 2005 and yields are down 15 cwt per acre. Unusually wet and cool growing conditions along with early hail hampered development, lowering yields and tuber sizes. Oregon's production, at 18.5 million cwt, is 16 percent below last year. Yield is expected to be 530 cwt per acre, 64 cwt below the record high yield set in 2005. In California, production is forecast to be up 14 percent. Good growing conditions resulted in larger tuber size and higher yields. In Montana, production is expected to be down 1 percent but the crop quality is reported to be good. Nevada growers expect a 26 percent increase in production. Growing conditions were good and irrigation water supplies adequate. New Mexico's production is expected to be up 19 percent from last year. This increase is due mainly to more harvested acres.

Central States production is forecast at 99.0 million cwt, up 1 percent from the November forecast and 11 percent above last year. Harvested area, estimated at 277,400 acres, is 7 percent above a year ago and the average yield of 357 cwt per acre is 13 cwt above a year ago. Wisconsin growers are expecting production to increase 5 percent from last year. Yield is expected to be 445 cwt per acre, up 35 cwt from last year. If realized, this will be a record high yield. North Dakota's production is expected to be up 24 percent from last year. The average yield, forecast at 260 cwt per acre, is 10 cwt above 2005. If realized, this will be the second highest yield on record. Minnesota production is forecast to increase 16 percent from last year. Drier conditions allowed harvest to progress ahead of last year. Michigan production is expected to increase 2 percent from 2005. Cool wet weather during October delayed harvest but drier weather the first part of November allowed harvest to be completed. The unfavorable weather may lead to some quality issues in storage potatoes. Nebraska's yield is forecast at 445 cwt per acre, 20 cwt above last year. If realized, this will be a record yield. Ohio production is expected to be 15 percent above last year. An 80 cwt per acre increase in yield more than offset a 14 percent decrease in harvested acres.

Eastern States production is forecast at 27.7 million cwt, up 1 percent from the November forecast and 15 percent above last year. Area for harvest totaled 91,400 acres, virtually unchanged from last month but up 1 percent from last year. Average yield, at 303 cwt per acre, is 4 cwt above November and up 35 cwt from last season. Maine production is forecast at 18.3 million cwt, 18 percent above 2005. The average yield is expected to be 315 cwt, 40 cwt above the previous year. If realized, this would be a record high. Growers in New York expect the average yield to be 300 cwt per acre, 40 cwt above last year. If realized, this would tie the record high yield set in 2003. Pennsylvania production is forecast at 2 percent above last year. Massachusetts and Rhode Island expect production to increase 29 percent and 19 percent, respectively.

Reliability of December 1 Stocks Estimates

To assist users in evaluating the reliability of the December 1 stocks estimate, the “Root Mean Square Error,” a statistical measure based on past performance, is computed. The deviation between the December 1 stocks estimate and the final estimate is expressed as a percentage of the final estimate. The average of squared percentage deviations for the latest 20-year period is computed. The square root of the average becomes statistically the “Root Mean Square Error.” Probability statements can be made concerning expected differences in the current estimate relative to the final end-of-season estimate, assuming that factors affecting this year’s estimate are not different from those influencing recent years.

The “Root Mean Square Error” for the December 1 stocks estimate is 2.4 percent. This means that chances are 2 out of 3 that the current estimate of 252 million cwt will not be above or below the final estimate by more than 2.4 percent or approximately 6.1 million cwt. Chances are 9 out of 10 (90 percent confidence level) that the difference will not exceed 4.1 percent or approximately 10.3 million cwt.

The 20-year (1986-2005) record of differences between the December 1 stocks estimates and the final estimates averaged 4.1 million cwt, ranging from 7.8 million cwt above the final to 14.5 million cwt below the final. During the 20-year period, the December 1 estimate has been below the final estimate 16 years and above 4 years.

Reliability of December 1 Fall Potato Estimates

Estimate	Root Mean Square Error		20-Year Record of Difference Between December 1 and Final Estimate					
	Percent	90% Confidence Level		Quantity			Number of Years	
		Percent	Quantity	Avg	Small	Large	Below Final	Above Final
		<i>Million Cwt</i>	<i>Million Cwt</i>	<i>Million Cwt</i>	<i>Million Cwt</i>	<i>Million Cwt</i>		
Stocks	2.4	4.1	10.34	4.12	0.11	14.50	16	4
Production	1.6	2.7	10.58	4.40	0.05	13.46	15	5

Fall Potato Stocks: Preliminary and Final December 1 Stocks, United States, 1996-2006

Crop Year	Preliminary Stocks	% of Final	Final Stocks
	<i>1,000 Cwt</i>	<i>Percent</i>	<i>1,000 Cwt</i>
1996	291,650	98.8	295,100
1997	274,250	98.4	278,830
1998	281,020	100.0	280,910
1999	274,870	99.9	275,100
2000	309,520	99.7	310,300
2001	266,520	103.0	258,750
2002	265,190	100.3	264,485
2003	267,160	99.7	267,900
2004	271,600	100.2	271,100
2005	253,400	99.8	253,800
2006	252,300		

ACCESS TO REPORTS!!

For your convenience, there are several ways to obtain NASS reports, data products, and services:

INTERNET ACCESS

All NASS reports are available free of charge on the worldwide Internet. For access, connect to the Internet and go to the NASS Home Page at: www.nass.usda.gov.

E-MAIL SUBSCRIPTION

All NASS reports are available by subscription free of charge direct to your e-mail address. Starting with the NASS Home Page at www.nass.usda.gov, under the right navigation, *Receive reports by Email*, click on **National** or **State**. Follow the instructions on the screen.

PRINTED REPORTS OR DATA PRODUCTS

CALL OUR TOLL-FREE ORDER DESK: 800-999-6779 (U.S. and Canada)
Other areas, please call 703-605-6220 FAX: 703-605-6900
(Visa, MasterCard, check, or money order acceptable for payment.)

ASSISTANCE

For **assistance** with general agricultural statistics or further information about NASS or its products or services, contact the **Agricultural Statistics Hotline** at **800-727-9540**, 7:30 a.m. to 4:00 p.m. ET, or e-mail: nass@nass.usda.gov.

The U.S. Department of Agriculture (USDA) prohibits discrimination in all its programs and activities on the basis of race, color, national origin, age, disability, and where applicable, sex, marital status, familial status, parental status, religion, sexual orientation, genetic information, political beliefs, reprisal, or because all or a part of an individual's income is derived from any public assistance program. (Not all prohibited bases apply to all programs.) Persons with disabilities who require alternative means for communication of program information (Braille, large print, audiotape, etc.) should contact USDA's TARGET Center at (202) 720-2600 (voice and TDD).

To file a complaint of discrimination, write to USDA, Director, Office of Civil Rights, 1400 Independence Avenue, S.W., Washington, D.C. 20250-9410, or call (800) 795-3272 (voice) or (202) 720-6382 (TDD). USDA is an equal opportunity provider and employer.