



NASS

FACT FINDERS FOR AGRICULTURE
UNITED STATES DEPARTMENT OF AGRICULTURE

Washington, D.C.

Potato Stocks

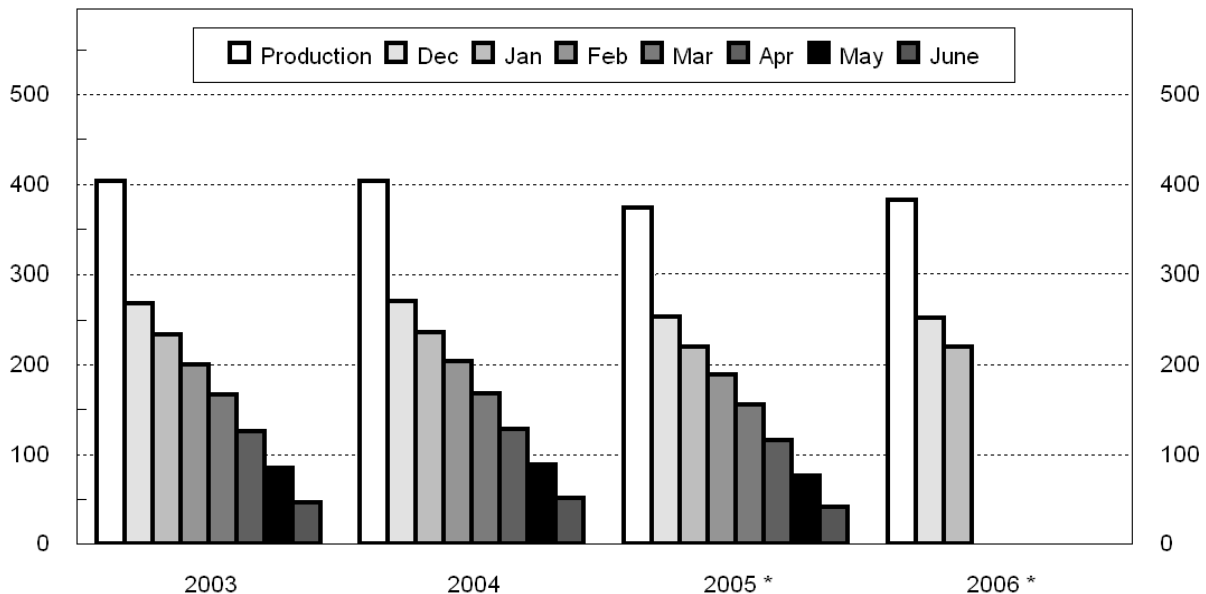
Released January 17, 2007, by the National Agricultural Statistics Service (NASS), Agricultural Statistics Board, U.S. Department of Agriculture. For information on *Potato Stocks* call Cathy Scherrer at (202) 720-4285, office hours 7:00 a.m. to 3:30 p.m. ET.

Potato Stocks Virtually Unchanged from Last Year

The 13 major potato States held 220 million cwt of potatoes in storage January 1, 2007, virtually unchanged from last year but 7 percent below January 1, 2005, for comparable States. Ohio and Pennsylvania were dropped from the potato stocks program starting with the 2005 storage season. Potatoes in storage account for 58 percent of the 2006 fall storage States' production, down 1 percentage point from last year. Klamath Basin stocks were added to the potato stocks program starting with December 2006 and total 3.40 million cwt on January 1, 2007. Klamath Basin includes California and Klamath County, Oregon potato stocks. Potato disappearance, at 162 million cwt, is up 6 percent from last year. Season to date shrink and loss, at 16.1 million cwt, is up 7 percent from last year. Processors in the 9 major States have used 88.5 million cwt of potatoes this season, up 9 percent from a year ago and 3 percent above 2 years ago. Dehydrating usage accounts for 16.5 million cwt of the total processing, up 5 percent from last year but 11 percent below the same date in 2005.

Fall Potatoes: Production and Stocks 15 Storage States

Mil Cwt



Production by crop year. Stocks by months following harvest.

* 13 Storage States for 2005 and 2006.

Fall Potatoes: Production and Stocks, 15 Major States, 1997-2006

Crop Year	Production	Dec 1	Jan 1	Feb 1	Mar 1	Apr 1	May 1	Jun 1 ¹
	<i>1,000 Cwt</i>	<i>1,000 Cwt</i>	<i>1,000 Cwt</i>	<i>1,000 Cwt</i>	<i>1,000 Cwt</i>	<i>1,000 Cwt</i>	<i>1,000 Cwt</i>	<i>1,000 Cwt</i>
1997	413,513	278,830	246,550	212,562	175,870	134,190	92,840	
1998	423,170	280,910	246,230	209,640	173,650	131,220	87,895	50,270
1999	420,567	275,100	239,910	207,150	169,620	128,410	86,915	47,220
2000	458,827	310,300	275,270	234,260	197,670	153,520	109,160	61,270
2001	387,033	258,750	224,680	192,090	158,590	119,950	81,200	42,990
2002	407,085	264,485	231,490	199,020	165,210	125,770	83,040	45,880
2003	403,181	267,900	233,590	200,230	166,280	126,110	85,000	46,020
2004	403,587	271,100	236,700	203,490	168,020	128,900	88,550	51,700
2005 ²	374,298	253,800	220,500	189,100	155,500	115,700	75,900	41,560
2006 ^{2 3}	382,283	252,200	220,000					

¹ Data not available prior to 1998.

² 13 major States.

³ December 1, 2006, stocks revised.

Potatoes: Quantity Used for Processing, 9 States, 2004-2006 ¹

State and Crop Year	Dec 1	Jan 1	Feb 1	Mar 1	Apr 1	May 1	Jun 1	Season
	<i>1,000 Cwt</i>	<i>1,000 Cwt</i>	<i>1,000 Cwt</i>	<i>1,000 Cwt</i>	<i>1,000 Cwt</i>	<i>1,000 Cwt</i>	<i>1,000 Cwt</i>	<i>1,000 Cwt</i>
ID & OR-Mal								
2004	24,360	30,840	36,820	44,610	51,000	58,090	65,800	84,600
2005	22,840	29,300	35,970	43,300	50,820	57,830	65,030	77,360
2006	26,130	32,810						
ME ²								
2004	1,540	1,970	2,600	3,135	3,700	4,340	4,910	6,590
2005	1,365	1,880	2,485	3,090	3,800	4,450	5,130	6,825
2006	1,755	2,360						
WA & OR-Oth								
2004	32,305	38,130	43,570	50,730	57,140	63,855	71,355	78,680
2005	30,310	35,895	40,545	48,290	55,320	61,855	69,360	78,550
2006	30,980	37,060						
Other Sts ³								
2004	12,490	15,000	17,965	20,910	24,150	27,480	30,945	41,175
2005	11,055	14,070	17,005	19,895	22,520	25,270	27,740	35,535
2006	13,465	16,265						
Total								
2004	70,695	85,940	100,955	119,385	135,990	153,765	173,010	211,045
2005	65,570	81,145	96,005	114,575	132,460	149,405	167,260	198,270
2006	72,330	88,495						
Dehydrated ⁵								
2004	14,525	18,540	21,875	25,970	30,020	33,685	38,505	47,810
2005	11,920	15,655	19,225	22,765	26,605	30,065	34,130	41,625
2006	12,860	16,490						

¹ Total quantity received and used for processing regardless of the State in which the potatoes were produced. Amount excludes quantities used for potato chips in ME and WI.

² Includes Maine grown potatoes only.

³ CO, MN, NV, ND, and WI.

⁴ Dehydrated products except starch and flour. Included in above totals. Includes CO, ID, NV, ND, OR, WA, and WI.

Fall Potatoes: Production and Stocks on January 1, 2006-2007 ¹

State	Crop of 2005			Crop of 2006			
	Prod	Stocks Jan 1, 2006	% of Prod	Prod	Stocks Dec 1, 2006	Stocks Jan 1, 2007	Jan % of Prod
	<i>1,000 Cwt</i>	<i>1,000 Cwt</i>	<i>Percent</i>	<i>1,000 Cwt</i>	<i>1,000 Cwt</i>	<i>1,000 Cwt</i>	<i>Percent</i>
CA	3,306	1,300	39	3,783	1,800	1,500	40
CO	22,910	15,000	65	22,686	17,200	15,200	67
ID	118,288	75,500	64	121,820	84,000	74,500	61
ME ²	15,455	11,200	72	18,270	14,600	13,000	71
MI	13,910	6,200	45	14,190	8,200	6,600	47
MN	17,630	11,100	63	20,400	12,000	10,700	52
MT	3,445	3,300	96	3,518	3,400	3,400	97
NE	8,245	4,700	57	8,633	5,800	4,800	56
NY	5,226	2,200	42	5,700	2,800	1,900	33
ND	20,500	11,500	56	25,480	17,300	15,000	59
OR	22,023	16,500	75	18,533	16,000	13,900	75
WA	95,480	46,500	49	89,900	49,000	42,500	47
WI	27,880	15,500	56	29,370	20,100	17,000	58
13 Sts ²	374,298	220,500	59	382,283	252,200	220,000	58
Klamath Basin ³					4,000	3,400	

¹ Stocks include processor holdings and most of the seed to plant the following year's crop. Seed usage for all seasons in 2006 totaled 25.6 million cwt.

² December 1, 2006, stocks revised.

³ Estimates began in December 2006. Includes potato stocks in CA and Klamath Co. OR.

**Fall Potatoes: Stocks by Type as Percent of Total Stocks,
10 Major States, January 1, 2006-2007**

State	Potato Types											
	Reds			Round Whites			Long Whites			Russets		
	Jan 2006	Dec 2006	Jan 2007	Jan 2006	Dec 2006	Jan 2007	Jan 2006	Dec 2006	Jan 2007	Jan 2006	Dec 2006	Jan 2007
	<i>Percent</i>	<i>Percent</i>	<i>Percent</i>	<i>Percent</i>	<i>Percent</i>	<i>Percent</i>	<i>Percent</i>	<i>Percent</i>	<i>Percent</i>	<i>Percent</i>	<i>Percent</i>	<i>Percent</i>
CO	4	3	3	11	13	13				85	84	84
ID	2	2	2				2	2	2	96	96	96
ME ¹	1	2	2	41	38	39	2			56	60	59
MI		1		90	87	90				10	12	10
MN	8	12	11	5	4	4		2	2	87	82	83
NY	5	5	5	90	90	90				5	5	5
ND	11	15	15	16	17	15	2	2	2	71	66	68
OR	1	1	1	1	2	2	2	2	2	96	95	95
WA	1	2	2		1		3	5	3	96	92	95
WI	2	4	3	29	14	33				69	82	64
10 St Avg	2	4	3	10	10	11	2	2	2	86	84	84

¹ December 2006 Revised.

**Fall Potatoes: Production, January 1 Stocks, and Farm Disposition,
15 Storage States and Fall Season States, 2003-2006 Crop Years**

State	Crop Year	Production	Stocks Jan 1	Total Used For Fall Seed	Farm Disposition		
					Where Grown		Sold
					Seed, Feed, Home Use	Shrinkage and Loss	
		<i>1,000 Cwt</i>	<i>1,000 Cwt</i>	<i>1,000 Cwt</i>	<i>1,000 Cwt</i>	<i>1,000 Cwt</i>	<i>1,000 Cwt</i>
CA	2003	3,528	2,100	167	1	343	3,184
	2004	3,648	2,300	213	1	292	3,355
	2005	3,306	1,300	226		331	2,975
	2006	3,783	1,500				
CO	2003	23,652	15,300	1,625	1,410	2,507	19,735
	2004	23,791	15,800	1,513	1,300	2,286	20,205
	2005	22,910	15,000	1,498	1,200	1,650	20,060
	2006	22,686	15,200				
ID	2003	123,180	76,500	7,810	1,463	8,900	112,817
	2004	131,970	84,500	7,150	1,250	10,902	119,818
	2005	118,288	75,500	7,260	1,230	7,800	109,258
	2006	121,820	74,500				
ME	2003	17,030	12,100	1,245	215	2,430	14,385
	2004	19,065	12,800	1,231	190	4,900	13,975
	2005	15,455	11,200	1,274	242	1,183	14,030
	2006	18,270	13,000				
MI	2003	15,015	7,700	1,060	265	1,680	13,070
	2004	13,650	6,300	860	194	1,656	11,800
	2005	13,910	6,200	1,056	182	1,728	12,000
	2006	14,190	6,600				
MN	2003	22,330	12,400	1,060	130	1,800	20,400
	2004	18,920	11,600	837	100	1,750	17,070
	2005	17,630	11,100	1,061	140	1,600	15,890
	2006	20,400	10,700				
MT	2003	3,339	3,000	268	160	270	2,909
	2004	3,551	3,400	257	156	276	3,119
	2005	3,445	3,300	242	156	210	3,079
	2006	3,518	3,400				
NE	2003	9,744	5,600	616	194	840	8,710
	2004	9,288	5,300	519	212	906	8,170
	2005	8,245	4,700	515	231	834	7,180
	2006	8,633	4,800				
NY	2003	6,510	1,600	440	100	520	5,890
	2004	5,184	1,600	451	100	513	4,571
	2005	5,226	2,200	453	100	491	4,635
	2006	5,700	1,900				

--continued

**Fall Potatoes: Production, January 1 Stocks, and Farm Disposition,
15 Storage States and Fall Season States, 2003-2006 Crop Years (continued)**

State	Crop Year	Production	Stocks Jan 1	Total Used For Fall Seed	Farm Disposition		
					Where Grown		Sold
					Seed, Feed, Home Use	Shrinkage and Loss	
		<i>1,000 Cwt</i>	<i>1,000 Cwt</i>	<i>1,000 Cwt</i>	<i>1,000 Cwt</i>	<i>1,000 Cwt</i>	<i>1,000 Cwt</i>
ND	2003	27,440	17,300	1,995	390	3,700	23,350
	2004	26,765	17,500	1,794	240	2,825	23,700
	2005	20,500	11,500	1,900	240	1,810	18,450
	2006	25,480	15,000				
OH ¹	2003	1,097	190	76	6	40	1,051
	2004	1,080	100	73	6	33	1,041
	2005						
	2006						
OR	2003	20,991	15,800	883	275	1,290	19,426
	2004	19,775	14,500	955	241	1,264	18,270
	2005	22,023	16,500	837	255	1,392	20,376
	2006	18,533	13,900				
PA ¹	2003	3,375	1,500	228	42	287	3,046
	2004	2,640	1,100	253	39	216	2,385
	2005						
	2006						
WA	2003	93,150	44,000	4,000	280	5,600	87,270
	2004	93,810	43,000	3,850	240	5,600	87,970
	2005	95,480	46,500	3,900	240	6,000	89,240
	2006	89,900	42,500				
WI	2003	32,800	18,500	1,562	300	2,750	29,750
	2004	30,450	16,900	1,360	260	1,985	28,205
	2005	27,880	15,500	1,474	300	1,380	26,200
	2006	29,370	17,000				
15 Sts ²	2003	403,181	233,590	23,035	5,231	32,957	364,993
	2004	403,587	236,700	21,316	4,529	35,404	363,654
	2005	374,298	220,500	21,696	4,516	26,409	343,373
	2006	382,283	220,000				
Fall Sts	2003	410,588		23,387	5,254	33,579	371,755
	2004	410,253		21,593	4,549	35,923	369,781
	2005	382,743		22,338	4,545	27,115	351,083
	2006	391,978					

¹ Stock estimates discontinued in 2005.

² 13 storage States starting in 2005.

NOTE: Stocks are defined as the quantity (whether sold or not) remaining in storage for all purposes and uses, including seed potatoes that are not yet moved, and shrinkage, waste, and other losses that occur after the date of each report. Sales of fall potatoes for all purposes for the past 5 years averaged 91.0 percent of the total fall production. Shrinkage, loss, and home use account for the remaining 9.0 percent.

**Potatoes: Production, Sold, Not Sold, and Kept for Seed,
United States, 2001-2006**

Crop Year	Fall Potatoes					Amount Used for Seed All Seasons Following year <i>1,000 Cwt</i>
	Production <i>1,000 Cwt</i>	Sold <i>1,000 Cwt</i>	Sold as % of Prod <i>Percent</i>	Not Sold <i>1,000 Cwt</i>	Not Sold as % of Prod <i>Percent</i>	
2001	393,631	358,812	91.2	34,819	8.8	28,625
2002	413,581	378,796	91.6	34,785	8.4	28,149
2003	410,588	371,755	90.5	38,833	9.5	26,687
2004	410,253	369,781	90.1	40,472	9.9	24,768
2005	382,743	351,083	91.7	31,660	8.3	25,628
2006	391,978					

Potatoes: Shrinkage and Loss, 15 Fall Storage States, 2003-2006

Crop Year	To Dec 1 <i>Million Cwt</i>	To Jan 1 <i>Million Cwt</i>	To Feb 1 <i>Million Cwt</i>	To Mar 1 <i>Million Cwt</i>	To Apr 1 <i>Million Cwt</i>	To May 1 <i>Million Cwt</i>	Total Jun 1 <i>Million Cwt</i>	Season <i>Million Cwt</i>
2003	15.0	17.4	20.5	22.6	25.4	27.5	29.9	33.0
2004	15.5	19.1	22.0	24.8	27.3	29.7	32.5	35.4
2005 ¹	12.7	15.0	16.8	18.4	20.2	22.0	23.7	26.4
2006 ^{1 2}	13.5	16.1						

¹ 13 fall storage States.

² December 1, 2006, shrink and loss revised.

**Fall Potatoes: Farm Marketings, Selected States,
2003-2005 Marketing Years**

State	Crop Year	Jul	Aug	Sep	Oct	Nov	Dec	Jan	Feb	Mar	Apr	May	Jun	Jul
		<i>Percent</i>	<i>Percent</i>	<i>Percent</i>	<i>Percent</i>	<i>Percent</i>	<i>Percent</i>	<i>Percent</i>	<i>Percent</i>	<i>Percent</i>	<i>Percent</i>	<i>Percent</i>	<i>Percent</i>	<i>Percent</i>
CA	2003				13	12	15	14	9	8	10	7	12	
	2004				8	9	21	13	8	14	12	7	8	
	2005				4	14	22	10	11	12	12	8	7	
CO	2003			6	8	9	10	11	9	12	14	8	7	6
	2004			5	7	9	10	10	8	12	10	11	11	7
	2005			5	8	10	10	10	8	11	10	12	10	6
ID	2003		4	8	10	11	8	7	8	10	11	11	6	6
	2004		6	9	10	11	7	6	6	9	10	9	10	7
	2005		2	11	13	8	7	8	7	11	10	10	6	7
ME	2003		1	5	11	8	9	10	10	11	15	10	6	4
	2004		1	9	6	7	10	10	10	11	15	10	7	4
	2005			5	11	8	9	10	9	12	15	10	6	5
MI	2003	1	7	8	11	11	11	10	8	13	12	8		
	2004	1	10	11	11	12	12	11	8	10	9	5		
	2005	1	8	11	13	12	12	12	10	10	8	3		
MN	2003		9	10	10	9	6	5	6	9	10	9	9	8
	2004		9	8	8	6	6	7	8	13	7	9	10	9
	2005		7	6	4	7	15	12	12	14	9	3	6	5
NY	2003		1	8	29	20	17	8	7	6	4			
	2004		4	16	19	16	13	10	9	8	5			
	2005		2	14	14	12	13	10	12	14	7	2		
ND	2003			23	10	6	7	6	9	7	11	10	9	2
	2004		1	20	9	6	6	8	7	11	11	7	8	6
	2005		2	25	13	5	9	9	9	8	10	7	2	1
OR	2003		10	9	19	9	8	7	7	7	8	8	5	3
	2004		12	11	16	8	6	4	9	10	9	8	4	3
	2005		17	10	13	5	7	5	8	9	10	8	4	4
PA ¹	2003		15	18	14	11	10	10	9	6	5	2		
	2004	1	18	16	15	8	15	8	6	5	6	2		
	2005													
WA	2003		16	12	22	7	6	5	7	6	6	7	5	1
	2004		18	14	21	6	5	5	7	6	6	6	5	1
	2005		14	13	23	7	6	4	6	7	7	7	5	1
WI	2003	1	6	12	12	12	10	9	10	10	9	7	2	
	2004		6	14	12	12	9	9	9	11	10	6	2	
	2005	1	6	16	11	10	10	9	9	10	8	8	2	
US	2003		7	10	14	10	8	7	8	9	10	9	5	3
	2004		9	11	13	9	7	7	7	9	9	8	7	4
	2005		7	12	14	8	8	7	8	10	9	8	5	4

¹ Farm marketing estimates discontinued in 2005.

January Potato Stocks Virtually Unchanged from Last Year

The 13 major potato States held 220 million cwt of potatoes in storage January 1, 2007, virtually unchanged from last year but 7 percent below January 1, 2005, for comparable States. Ohio and Pennsylvania were dropped from the potato stocks program starting with the 2005 storage season. Potatoes in storage account for 58 percent of the 2006 fall storage States' production, down 1 percentage point from last year. Klamath Basin stocks were added to the potato stocks program starting with December 2006 and total 3.40 million cwt on January 1, 2007. Klamath Basin includes California and Klamath County, Oregon potato stocks.

Disappearance of 162 million cwt from the start of harvest to January 1, is up 6 percent from last year. Shrink and loss, at 16.1 million cwt, is up 7 percent from the previous year.

Processors have used 88.5 million cwt of 2006 crop potatoes so far this season, up 9 percent from a year ago and 3 percent above 2 years ago. Idaho and Malheur County, Oregon total processing increased 12 percent from a year ago, Maine's total processing was 26 percent above the same date in 2006, and Washington and the rest of Oregon total processing was up 3 percent from last season. Dehydrating usage accounts for 16.5 million cwt of the total processing, up 5 percent from last year but 11 percent below the same date in 2005.

Western States held 151 million cwt of potatoes in storage on January 1, down 4 percent from last year. Idaho's potato stocks are down 1 percent from last year, Washington's potato sheds held 9 percent less than last year, and Oregon's stocks declined 16 percent from last season. Colorado potato sheds held 1 percent more stocks than last year, Montana's stocks are up 3 percent from 2006, and California's potato stocks increased 15 percent from last season.

Central States accounted for 54.1 million cwt of potato stocks on January 1, up 10 percent from last year. Wisconsin's potato stocks increased 10 percent from last year, North Dakota's sheds held 30 percent more, Michigan stocks are up 6 percent, and potato stocks in Nebraska are 2 percent above last season. Minnesota's potato stocks declined 4 percent from the same date in 2006.

Eastern States stored 14.9 million cwt of potatoes on January 1, up 11 percent from last year. Maine's potato sheds held 16 percent more than last year, while New York's potato stocks declined 4 percent from a year ago.

Reliability of January 1 Stocks Estimates

To assist users in evaluating the reliability of the January 1 stocks estimate, the “Root Mean Square Error,” a statistical measure based on past performance, is computed. The deviation between the January 1 stocks estimate and the final estimate is expressed as a percentage of the final estimate. The average of squared percentage deviations for the latest 20-year period is computed. The square root of the average becomes statistically the “Root Mean Square Error.” Probability statements can be made concerning expected differences in the current estimate relative to the final end-of-season estimate, assuming that factors affecting this year’s estimate are not different from those influencing recent years.

The “Root Mean Square Error” for the January 1 stocks estimate is 2.6 percent. This means that chances are 2 out of 3 that the current estimate of 220 million cwt will not be above or below the final estimate by more than 2.6 percent or approximately 5.7 million cwt. Chances are 9 out of 10 (90 percent confidence level) that the difference will not exceed 4.6 percent or approximately 10.1 million cwt.

The 20-year (1986-2005) record of differences between the January 1 stocks estimates and the final estimates averaged 4.2 million cwt, ranging from 8.7 million cwt above the final to 14.3 million cwt below the final. During the 20-year period, the January 1 estimate has been below the final estimate 16 years and above 4 years.

**Fall Potato Stocks: Preliminary and Final January 1 Stocks,
United States, 1996-2006**

Crop Year	Preliminary Stocks	% of Final	Final Stocks
	<i>1,000 Cwt</i>	<i>Percent</i>	<i>1,000 Cwt</i>
1996	256,520	98.2	261,320
1997	240,850	97.7	246,550
1998	246,220	100.0	246,230
1999	238,160	99.3	239,910
2000	272,960	99.2	275,270
2001	233,420	103.9	224,680
2002	232,140	100.3	231,490
2003	233,880	100.1	233,590
2004	238,220	100.6	236,700
2005	218,900	99.3	220,500
2006	220,000		

ACCESS TO REPORTS!!

For your convenience, there are several ways to obtain NASS reports, data products, and services:

INTERNET ACCESS

All NASS reports are available free of charge on the worldwide Internet. For access, connect to the Internet and go to the NASS Home Page at: www.nass.usda.gov.

E-MAIL SUBSCRIPTION

All NASS reports are available by subscription free of charge direct to your e-mail address. Starting with the NASS Home Page at www.nass.usda.gov, under the right navigation, *Receive reports by Email*, click on **National** or **State**. Follow the instructions on the screen.

PRINTED REPORTS OR DATA PRODUCTS

CALL OUR TOLL-FREE ORDER DESK: 800-999-6779 (U.S. and Canada)
Other areas, please call 703-605-6220 FAX: 703-605-6900
(Visa, MasterCard, check, or money order acceptable for payment.)

ASSISTANCE

For **assistance** with general agricultural statistics or further information about NASS or its products or services, contact the **Agricultural Statistics Hotline** at **800-727-9540**, 7:30 a.m. to 4:00 p.m. ET, or e-mail: nass@nass.usda.gov.

The U.S. Department of Agriculture (USDA) prohibits discrimination in all its programs and activities on the basis of race, color, national origin, age, disability, and where applicable, sex, marital status, familial status, parental status, religion, sexual orientation, genetic information, political beliefs, reprisal, or because all or a part of an individual's income is derived from any public assistance program. (Not all prohibited bases apply to all programs.) Persons with disabilities who require alternative means for communication of program information (Braille, large print, audiotape, etc.) should contact USDA's TARGET Center at (202) 720-2600 (voice and TDD).

To file a complaint of discrimination, write to USDA, Director, Office of Civil Rights, 1400 Independence Avenue, S.W., Washington, D.C. 20250-9410, or call (800) 795-3272 (voice) or (202) 720-6382 (TDD). USDA is an equal opportunity provider and employer.

Agriculture at the Crossroads: Energy, Farm & Rural Policy



March 1-2, 2007
Crystal Gateway
Marriott Hotel
Arlington, Virginia

The Forum will feature Secretary Mike Johanns, distinguished guest speakers, and a panel of America's leading CEOs focusing on the impact of bioenergy on agriculture. Attendees at the 83rd annual Outlook Forum will include top officials, industry analysts, business leaders, farmers and ranchers, and other experts in agriculture.

- \$300 if you register by Feb. 5, 2007
- \$350 if you register after Feb. 5, 2007

For a program preview & to register, go to:
www.usda.gov/oce/forum

- Topical sessions, including luncheon and dinner speakers
- Networking opportunities, 1,500 expected to attend

Find full program and registration details at agforum@oce.usda.gov or write to 2007 Outlook Forum, Room 4426 South Building, USDA, Washington, D.C. 20250-3812.