



# NASS

FACT FINDERS FOR AGRICULTURE  
UNITED STATES DEPARTMENT OF AGRICULTURE

Washington, D.C.

# Potato Stocks

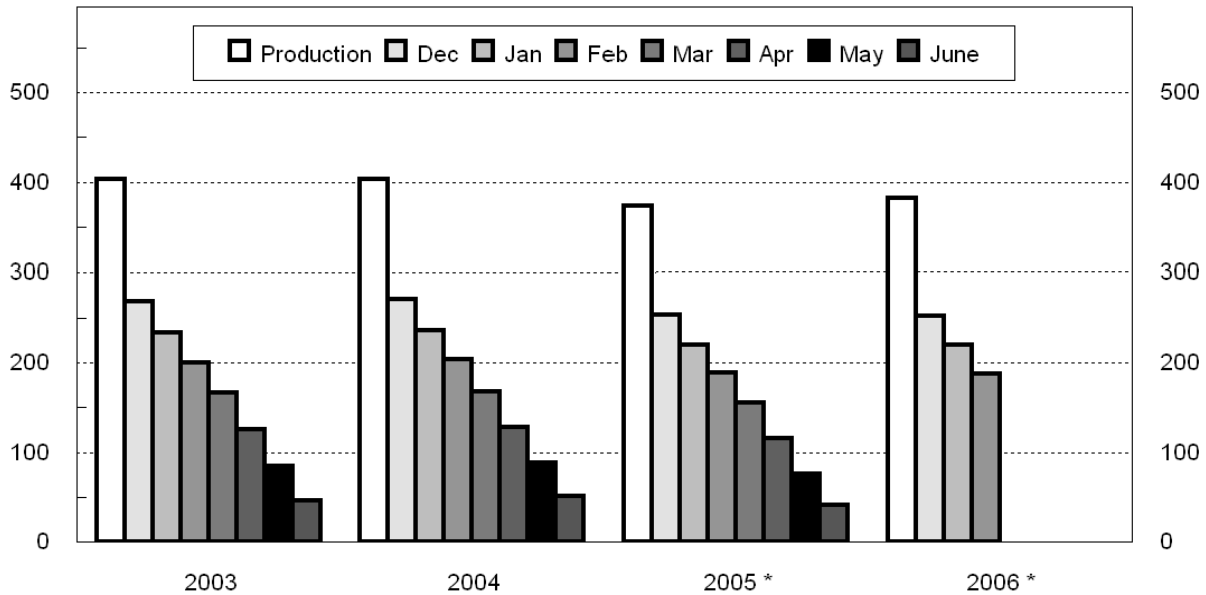
Released February 15, 2007, by the National Agricultural Statistics Service (NASS), Agricultural Statistics Board, U.S. Department of Agriculture. For information on *Potato Stocks* call Cathy Scherrer at (202) 720-4285, office hours 7:00 a.m. to 3:30 p.m. ET.

## Potato Stocks Down 1 Percent from Last Year

The 13 major potato States held 188 million cwt of potatoes in storage February 1, 2007, down 1 percent from last year and 7 percent below February 1, 2005, for comparable States. Ohio and Pennsylvania were dropped from the potato stocks program starting with the 2005 storage season. Potatoes in storage account for 49 percent of the 2006 fall storage States' production, down 2 percentage points from last year. Klamath Basin stocks were added to the potato stocks program starting with December 2006 and total 2.60 million cwt on February 1, 2007. Klamath Basin includes California and Klamath County, Oregon potato stocks. Potato disappearance, at 194 million cwt, is up 5 percent from last year. Season to date shrink and loss, at 18.2 million cwt, is up 8 percent from last year. Processors in the 9 major States have used 106 million cwt of potatoes this season, up 10 percent from a year ago and 5 percent above 2 years ago. Dehydrating usage accounts for 21.3 million cwt of the total processing, up 11 percent from last year but 3 percent below the same date in 2005.

## Fall Potatoes: Production and Stocks 15 Storage States

Mil Cwt



Production by crop year. Stocks by months following harvest.  
\* 13 Storage States for 2005 and 2006.

**Fall Potatoes: Production and Stocks, 15 Major States, 1997-2006**

Crop Year	Production	Dec 1	Jan 1	Feb 1	Mar 1	Apr 1	May 1	Jun 1 <sup>1</sup>
	<i>1,000 Cwt</i>	<i>1,000 Cwt</i>	<i>1,000 Cwt</i>	<i>1,000 Cwt</i>	<i>1,000 Cwt</i>	<i>1,000 Cwt</i>	<i>1,000 Cwt</i>	<i>1,000 Cwt</i>
1997	413,513	278,830	246,550	212,562	175,870	134,190	92,840	
1998	423,170	280,910	246,230	209,640	173,650	131,220	87,895	50,270
1999	420,567	275,100	239,910	207,150	169,620	128,410	86,915	47,220
2000	458,827	310,300	275,270	234,260	197,670	153,520	109,160	61,270
2001	387,033	258,750	224,680	192,090	158,590	119,950	81,200	42,990
2002	407,085	264,485	231,490	199,020	165,210	125,770	83,040	45,880
2003	403,181	267,900	233,590	200,230	166,280	126,110	85,000	46,020
2004	403,587	271,100	236,700	203,490	168,020	128,900	88,550	51,700
2005 <sup>2</sup>	374,298	253,800	220,500	189,100	155,500	115,700	75,900	41,560
2006 <sup>2</sup>	382,283	252,200	220,000	187,800				

<sup>1</sup> Data not available prior to 1998.

<sup>2</sup> 13 major States.

**Potatoes: Quantity Used for Processing, 9 States, 2004-2006 <sup>1</sup>**

State and Crop Year	Dec 1	Jan 1	Feb 1	Mar 1	Apr 1	May 1	Jun 1	Season
	<i>1,000 Cwt</i>	<i>1,000 Cwt</i>	<i>1,000 Cwt</i>	<i>1,000 Cwt</i>	<i>1,000 Cwt</i>	<i>1,000 Cwt</i>	<i>1,000 Cwt</i>	<i>1,000 Cwt</i>
ID & OR-Mal								
2004	24,360	30,840	36,820	44,610	51,000	58,090	65,800	84,600
2005	22,840	29,300	35,970	43,300	50,820	57,830	65,030	77,360
2006	26,130	32,810	40,100					
ME <sup>2</sup>								
2004	1,540	1,970	2,600	3,135	3,700	4,340	4,910	6,590
2005	1,365	1,880	2,485	3,090	3,800	4,450	5,130	6,825
2006	1,755	2,360	2,910					
WA & OR-Oth								
2004	32,305	38,130	43,570	50,730	57,140	63,855	71,355	78,680
2005	30,310	35,895	40,545	48,290	55,320	61,855	69,360	78,550
2006	30,980	37,060	42,190					
Other Sts <sup>3</sup>								
2004	12,490	15,000	17,965	20,910	24,150	27,480	30,945	41,175
2005	11,055	14,070	17,005	19,895	22,520	25,270	27,740	35,535
2006 <sup>4</sup>	13,465	16,905	20,450					
Total								
2004	70,695	85,940	100,955	119,385	135,990	153,765	173,010	211,045
2005	65,570	81,145	96,005	114,575	132,460	149,405	167,260	198,270
2006 <sup>4</sup>	72,330	89,135	105,650					
Dehydrated <sup>5</sup>								
2004	14,525	18,540	21,875	25,970	30,020	33,685	38,505	47,810
2005	11,920	15,655	19,225	22,765	26,605	30,065	34,130	41,625
2006 <sup>4</sup>	12,860	17,130	21,270					

<sup>1</sup> Total quantity received and used for processing regardless of the State in which the potatoes were produced. Amount excludes quantities used for potato chips in ME and WI.

<sup>2</sup> Includes Maine grown potatoes only.

<sup>3</sup> CO, MN, NV, ND, and WI.

<sup>4</sup> January revised.

<sup>5</sup> Dehydrated products except starch and flour. Included in above totals. Includes CO, ID, NV, ND, OR, WA, and WI.

**Fall Potatoes: Production and Stocks on February 1, 2006-2007 <sup>1</sup>**

State	Crop of 2005			Crop of 2006		
	Prod	Stocks Feb 1, 2006	% of Prod	Prod	Stocks Feb 1, 2007	% of Prod
	<i>1,000 Cwt</i>	<i>1,000 Cwt</i>	<i>Percent</i>	<i>1,000 Cwt</i>	<i>1,000 Cwt</i>	<i>Percent</i>
CA	3,306	1,100	33	3,783	1,300	34
CO	22,910	12,900	56	22,686	13,100	58
ID	118,288	66,000	56	121,820	64,500	53
ME	15,455	9,700	63	18,270	11,500	63
MI	13,910	4,500	32	14,190	5,100	36
MN	17,630	9,000	51	20,400	9,700	48
MT	3,445	3,300	96	3,518	3,400	97
NE	8,245	3,900	47	8,633	3,900	45
NY	5,226	1,700	33	5,700	1,100	19
ND	20,500	9,400	46	25,480	12,000	47
OR	22,023	14,500	66	18,533	11,700	63
WA	95,480	40,500	42	89,900	36,500	41
WI	27,880	12,600	45	29,370	14,000	48
13 Sts	374,298	189,100	51	382,283	187,800	49
Klamath Basin <sup>2</sup>					2,600	

<sup>1</sup> Stocks include processor holdings and most of the seed to plant following year's crop. Seed usage for all seasons in 2006 totaled 25.6 million cwt.

<sup>2</sup> Estimates began in December 2006. Includes potato stocks in CA and Klamath Co. OR.

**Fall Potatoes: Stocks by Type as Percent of Total Stocks,  
10 Selected States, February 1, 2006-2007**

State	Potato Types							
	Reds		Round Whites		Long Whites		Russets	
	2006	2007	2006	2007	2006	2007	2006	2007
	<i>Percent</i>	<i>Percent</i>	<i>Percent</i>	<i>Percent</i>	<i>Percent</i>	<i>Percent</i>	<i>Percent</i>	<i>Percent</i>
CO	4	3	11	13			85	84
ID	2	2			2	2	96	96
ME	1	2	42	40	1	1	56	57
MI			90	90			10	10
MN	8	11	5	4		2	87	83
NY	5	5	90	90			5	5
ND	9	13	14	15	2	2	75	70
OR	1	1	1	2	2	2	96	95
WA	1	1			2	2	97	97
WI	1	1	23	30			76	69
10 St Avg	2	3	9	10	2	2	87	85

**Fall Potatoes: Production, February 1 Stocks, and Farm Disposition,  
15 Storage States and All Fall Season States, 2003-2006 Crop Years**

State	Crop Year	Production	Stocks Feb 1 <sup>1</sup>	Total Used For Fall Seed	Farm Disposition		
					Where Grown		Sold
					Seed, Feed, Home Use	Shrinkage and Loss	
		<i>1,000 Cwt</i>	<i>1,000 Cwt</i>	<i>1,000 Cwt</i>	<i>1,000 Cwt</i>	<i>1,000 Cwt</i>	<i>1,000 Cwt</i>
CA	2003	3,528	1,600	167	1	343	3,184
	2004	3,648	1,800	213	1	292	3,355
	2005	3,306	1,100	226		331	2,975
	2006	3,783	1,300				
CO	2003	23,652	12,600	1,625	1,410	2,507	19,735
	2004	23,791	13,700	1,513	1,300	2,286	20,205
	2005	22,910	12,900	1,498	1,200	1,650	20,060
	2006	22,686	13,100				
ID	2003	123,180	67,000	7,810	1,463	8,900	112,817
	2004	131,970	75,000	7,150	1,250	10,902	119,818
	2005	118,288	66,000	7,260	1,230	7,800	109,258
	2006	121,820	64,500				
ME	2003	17,030	10,500	1,245	215	2,430	14,385
	2004	19,065	11,100	1,231	190	4,900	13,975
	2005	15,455	9,700	1,274	242	1,183	14,030
	2006	18,270	11,500				
MI	2003	15,015	6,200	1,060	265	1,680	13,070
	2004	13,650	4,800	860	194	1,656	11,800
	2005	13,910	4,500	1,056	182	1,728	12,000
	2006	14,190	5,100				
MN	2003	22,330	11,100	1,060	130	1,800	20,400
	2004	18,920	10,200	837	100	1,750	17,070
	2005	17,630	9,000	1,061	140	1,600	15,890
	2006	20,400	9,700				
MT	2003	3,339	2,900	268	160	270	2,909
	2004	3,551	3,350	257	156	276	3,119
	2005	3,445	3,300	242	156	210	3,079
	2006	3,518	3,400				
NE	2003	9,744	4,600	616	194	840	8,710
	2004	9,288		519	212	906	8,170
	2005	8,245	3,900	515	231	834	7,180
	2006	8,633	3,900				
NY	2003	6,510	1,100	440	100	520	5,890
	2004	5,184	1,200	451	100	513	4,571
	2005	5,226	1,700	453	100	491	4,635
	2006	5,700	1,100				

See footnote(s) at end of table.

--continued

**Fall Potatoes: Production, February 1 Stocks, and Farm Disposition,  
15 Storage States and All Fall Season States, 2003-2006 Crop Years (continued)**

State	Crop Year	Production	Stocks Feb 1 <sup>1</sup>	Total Used For Fall Seed	Farm Disposition		
					Where Grown		Sold
					Seed, Feed, Home Use	Shrinkage and Loss	
		<i>1,000 Cwt</i>	<i>1,000 Cwt</i>	<i>1,000 Cwt</i>	<i>1,000 Cwt</i>	<i>1,000 Cwt</i>	<i>1,000 Cwt</i>
ND	2003	27,440	15,000	1,995	390	3,700	23,350
	2004	26,765	15,300	1,794	240	2,825	23,700
	2005	20,500	9,400	1,900	240	1,810	18,450
	2006	25,480	12,000				
OH <sup>2</sup>	2003	1,097	130	76	6	40	1,051
	2004	1,080		73	6	33	1,041
	2005						
	2006						
OR	2003	20,991	13,500	883	275	1,290	19,426
	2004	19,775	11,800	955	241	1,264	18,270
	2005	22,023	14,500	837	255	1,392	20,376
	2006	18,533	11,700				
PA <sup>2</sup>	2003	3,375	1,100	228	42	287	3,046
	2004	2,640	900	253	39	216	2,385
	2005						
	2006						
WA	2003	93,150	38,000	4,000	280	5,600	87,270
	2004	93,810	36,500	3,850	240	5,600	87,970
	2005	95,480	40,500	3,900	240	6,000	89,240
	2006	89,900	36,500				
WI	2003	32,800	14,900	1,562	300	2,750	29,750
	2004	30,450	13,600	1,360	260	1,985	28,205
	2005	27,880	12,600	1,474	300	1,380	26,200
	2006	29,370	14,000				
Other Sts	2003						
	2004		4,240				
	2005						
	2006						
15 Sts <sup>3</sup>	2003	403,181	200,230	23,035	5,231	32,957	364,993
	2004	403,587	203,490	21,316	4,529	35,404	363,654
	2005	374,298	189,100	21,696	4,516	26,409	343,373
	2006	382,283	187,800				
Fall Sts	2003	410,588		23,387	5,254	33,579	371,755
	2004	410,253		21,593	4,549	35,923	369,781
	2005	382,743		22,338	4,545	27,115	351,083
	2006	391,978					

<sup>1</sup> Missing stocks combined into "Other Sts" to avoid disclosure of individual operations.

<sup>2</sup> Stock estimates discontinued in crop year 2005.

<sup>3</sup> 13 storage States starting in crop year 2005.

NOTE: Stocks are defined as the quantity (whether sold or not) remaining in storage for all purposes and uses, including seed potatoes that are not yet moved, and shrinkage, waste, and other losses that occur after the date of each report. Sales of fall potatoes for all purposes for the past 5 years averaged 91.0 percent of the total fall production. Shrinkage, loss, and home use account for the remaining 9.0 percent.

**Potatoes: Production, Sold, Not Sold, and Kept for Seed,  
United States, 2001-2006**

Crop Year	Fall Potatoes					Amount Used for Seed All Seasons Following Year
	Production	Sold	Sold as % of Production	Not Sold	Not Sold as % of Production	
	<i>1,000 Cwt</i>	<i>1,000 Cwt</i>	<i>Percent</i>	<i>1,000 Cwt</i>	<i>Percent</i>	<i>1,000 Cwt</i>
2001	393,631	358,812	91.2	34,819	8.8	28,625
2002	413,581	378,796	91.6	34,785	8.4	28,149
2003	410,588	371,755	90.5	38,833	9.5	26,687
2004	410,253	369,781	90.1	40,472	9.9	24,768
2005	382,743	351,083	91.7	31,660	8.3	25,628
2006	391,978					

**Potatoes: Shrinkage and Loss, 15 Fall Storage States, 2003-2006**

Crop Year	To Dec 1	To Jan 1	To Feb 1	To Mar 1	To Apr 1	To May 1	Total Jun 1	Season
	<i>Million Cwt</i>	<i>Million Cwt</i>	<i>Million Cwt</i>	<i>Million Cwt</i>	<i>Million Cwt</i>	<i>Million Cwt</i>	<i>Million Cwt</i>	<i>Million Cwt</i>
2003	15.0	17.4	20.5	22.6	25.4	27.5	29.9	33.0
2004	15.5	19.1	22.0	24.8	27.3	29.7	32.5	35.4
2005 <sup>1</sup>	12.7	15.0	16.8	18.4	20.2	22.0	23.7	26.4
2006 <sup>1</sup>	13.5	16.1	18.2					

<sup>1</sup> 13 fall storage States.

**Fall Potatoes: Farm Marketings, Selected States,  
2003-2005 Marketing Years**

State	Crop Year	Jul	Aug	Sep	Oct	Nov	Dec	Jan	Feb	Mar	Apr	May	Jun	Jul
		<i>Percent</i>	<i>Percent</i>	<i>Percent</i>	<i>Percent</i>	<i>Percent</i>	<i>Percent</i>	<i>Percent</i>	<i>Percent</i>	<i>Percent</i>	<i>Percent</i>	<i>Percent</i>	<i>Percent</i>	<i>Percent</i>
CA	2003				13	12	15	14	9	8	10	7	12	
	2004				8	9	21	13	8	14	12	7	8	
	2005				4	14	22	10	11	12	12	8	7	
CO	2003			6	8	9	10	11	9	12	14	8	7	6
	2004			5	7	9	10	10	8	12	10	11	11	7
	2005			5	8	10	10	10	8	11	10	12	10	6
ID	2003		4	8	10	11	8	7	8	10	11	11	6	6
	2004		6	9	10	11	7	6	6	9	10	9	10	7
	2005		2	11	13	8	7	8	7	11	10	10	6	7
ME	2003		1	5	11	8	9	10	10	11	15	10	6	4
	2004		1	9	6	7	10	10	10	11	15	10	7	4
	2005			5	11	8	9	10	9	12	15	10	6	5
MI	2003	1	7	8	11	11	11	10	8	13	12	8		
	2004	1	10	11	11	12	12	11	8	10	9	5		
	2005	1	8	11	13	12	12	12	10	10	8	3		
MN	2003		9	10	10	9	6	5	6	9	10	9	9	8
	2004		9	8	8	6	6	7	8	13	7	9	10	9
	2005		7	6	4	7	15	12	12	14	9	3	6	5
NY	2003		1	8	29	20	17	8	7	6	4			
	2004		4	16	19	16	13	10	9	8	5			
	2005		2	14	14	12	13	10	12	14	7	2		
ND	2003			23	10	6	7	6	9	7	11	10	9	2
	2004		1	20	9	6	6	8	7	11	11	7	8	6
	2005		2	25	13	5	9	9	9	8	10	7	2	1
OR	2003		10	9	19	9	8	7	7	7	8	8	5	3
	2004		12	11	16	8	6	4	9	10	9	8	4	3
	2005		17	10	13	5	7	5	8	9	10	8	4	4
PA <sup>1</sup>	2003		15	18	14	11	10	10	9	6	5	2		
	2004	1	18	16	15	8	15	8	6	5	6	2		
	2005													
WA	2003		16	12	22	7	6	5	7	6	6	7	5	1
	2004		18	14	21	6	5	5	7	6	6	6	5	1
	2005		14	13	23	7	6	4	6	7	7	7	5	1
WI	2003	1	6	12	12	12	10	9	10	10	9	7	2	
	2004		6	14	12	12	9	9	9	11	10	6	2	
	2005	1	6	16	11	10	10	9	9	10	8	8	2	
US	2003		7	10	14	10	8	7	8	9	10	9	5	3
	2004		9	11	13	9	7	7	7	9	9	8	7	4
	2005		7	12	14	8	8	7	8	10	9	8	5	4

<sup>1</sup> Farm marketing estimates discontinued in 2005.

## February Potato Stocks Down 1 Percent from Last Year

The 13 major potato States held 188 million cwt of potatoes in storage February 1, 2007, down 1 percent from last year and 7 percent below February 1, 2005, for comparable States. Ohio and Pennsylvania were dropped from the potato stocks program starting with the 2005 storage season. Potatoes in storage account for 49 percent of the 2006 fall storage States' production, down 2 percentage points from last year. Klamath Basin stocks were added to the potato stocks program starting with December 2006 and total 2.60 million cwt on February 1, 2007. Klamath Basin includes California and Klamath County, Oregon potato stocks.

Disappearance of 194 million cwt from the start of harvest to February 1, is up 5 percent from last year. Shrink and loss, at 18.2 million cwt, is up 8 percent from the previous year.

Processors have used 106 million cwt of 2006 crop potatoes so far this season, up 10 percent from a year ago and 5 percent above 2 years ago. Idaho and Malheur County, Oregon total processing increased 11 percent from a year ago, Maine's total processing was 17 percent above the same date in 2006, and Washington and the rest of Oregon total processing was up 4 percent from last season. Dehydrating usage accounts for 21.3 million cwt of the total processing, up 11 percent from last year but 3 percent below the same date in 2005.

Western States held 131 million cwt of potatoes in storage on February 1, down 6 percent from last year. Idaho's potato stocks are down 2 percent from last year, Washington's potato sheds held 10 percent less than last year, and Oregon's stocks declined 19 percent from last season. Colorado potato sheds held 2 percent more stocks than last year, Montana's stocks are up 3 percent from 2006, and California's potato stocks increased 18 percent from last season.

Central States accounted for 44.7 million cwt of potato stocks on February 1, up 13 percent from last year. Wisconsin's potato stocks increased 11 percent from last year, North Dakota's sheds held 28 percent more, Minnesota stocks are up 8 percent, and potato stocks in Michigan are 13 percent above last season. Nebraska's potato stocks are unchanged from the same date in 2006.

Eastern States stored 12.6 million cwt of potatoes on February 1, up 11 percent from last year. Maine's potato sheds held 19 percent more than last year, while New York's potato stocks declined 35 percent from a year ago.



## Reliability of February 1 Stocks Estimates

To assist users in evaluating the reliability of the February 1 stocks estimate, the “Root Mean Square Error,” a statistical measure based on past performance, is computed. The deviation between the February 1 stocks estimate and the final estimate is expressed as a percentage of the final estimate. The average of squared percentage deviations for the latest 20-year period is computed. The square root of the average becomes statistically the “Root Mean Square Error.” Probability statements can be made concerning expected differences in the current estimate relative to the final end-of-season estimate, assuming that factors affecting this year’s estimate are not different from those influencing recent years.

The “Root Mean Square Error” for the February 1 stocks estimate is 3.1 percent. This means that chances are 2 out of 3 that the current estimate of 188 million cwt will not be above or below the final estimate by more than 3.1 percent or approximately 5.8 million cwt. Chances are 9 out of 10 (90 percent confidence level) that the difference will not exceed 5.3 percent or approximately 10.0 million cwt.

The 20-year (1986-2005) record of differences between the February 1 stocks estimates and the final estimates averaged 4.2 million cwt, ranging from 9.7 million cwt above the final to 14.2 million cwt below the final. During the 20-year period, the February 1 estimate has been below the final estimate 14 years and above 6 years.

**Fall Potato Stocks: Preliminary and Final February 1 Stocks,  
United States, 1996-2006**

Crop Year	Preliminary Stocks	% of Final	Final Stocks
	<i>1,000 Cwt</i>	<i>Percent</i>	<i>1,000 Cwt</i>
1996	220,465	97.5	226,080
1997	205,850	96.8	212,562
1998	211,100	100.7	209,640
1999	205,780	99.3	207,150
2000	235,050	100.3	234,260
2001	201,750	105.0	192,090
2002	197,470	99.2	199,020
2003	200,530	100.1	200,230
2004	204,190	100.3	203,490
2005	187,600	99.2	189,100
2006	187,800		

## ACCESS TO REPORTS!!

---

For your convenience, there are several ways to obtain NASS reports, data products, and services:

### INTERNET ACCESS

All NASS reports are available free of charge on the worldwide Internet. For access, connect to the Internet and go to the NASS Home Page at: [www.nass.usda.gov](http://www.nass.usda.gov).

### E-MAIL SUBSCRIPTION

All NASS reports are available by subscription free of charge direct to your e-mail address. Starting with the NASS Home Page at [www.nass.usda.gov](http://www.nass.usda.gov), under the right navigation, *Receive reports by Email*, click on **National** or **State**. Follow the instructions on the screen.

-----

### PRINTED REPORTS OR DATA PRODUCTS

**CALL OUR TOLL-FREE ORDER DESK: 800-999-6779 (U.S. and Canada)**  
**Other areas, please call 703-605-6220      FAX: 703-605-6900**  
**(Visa, MasterCard, check, or money order acceptable for payment.)**

-----

### ASSISTANCE

For **assistance** with general agricultural statistics or further information about NASS or its products or services, contact the **Agricultural Statistics Hotline** at **800-727-9540**, 7:30 a.m. to 4:00 p.m. ET, or e-mail: [nass@nass.usda.gov](mailto:nass@nass.usda.gov).

The U.S. Department of Agriculture (USDA) prohibits discrimination in all its programs and activities on the basis of race, color, national origin, age, disability, and where applicable, sex, marital status, familial status, parental status, religion, sexual orientation, genetic information, political beliefs, reprisal, or because all or a part of an individual's income is derived from any public assistance program. (Not all prohibited bases apply to all programs.) Persons with disabilities who require alternative means for communication of program information (Braille, large print, audiotape, etc.) should contact USDA's TARGET Center at (202) 720-2600 (voice and TDD).

To file a complaint of discrimination, write to USDA, Director, Office of Civil Rights, 1400 Independence Avenue, S.W., Washington, D.C. 20250-9410, or call (800) 795-3272 (voice) or (202) 720-6382 (TDD). USDA is an equal opportunity provider and employer.

# Agriculture at the Crossroads: Energy, Farm & Rural Policy



**March 1-2, 2007**  
**Crystal Gateway**  
**Marriott Hotel**  
**Arlington, Virginia**

The Forum will feature Secretary Mike Johanns, distinguished guest speakers, and a panel of America's leading CEOs focusing on the impact of bioenergy on agriculture. Attendees at the 83<sup>rd</sup> annual Outlook Forum will include top officials, industry analysts, business leaders, farmers and ranchers, and other experts in agriculture.

- \$300 if you register by Feb. 5, 2007
- \$350 if you register after Feb. 5, 2007

For a program preview & to register, go to:  
[www.usda.gov/oce/forum](http://www.usda.gov/oce/forum)

- Topical sessions, including luncheon and dinner speakers
- Networking opportunities, 1,500 expected to attend

Find full program and registration details at [agforum@oce.usda.gov](mailto:agforum@oce.usda.gov) or write to 2007 Outlook Forum, Room 4426 South Building, USDA, Washington, D.C. 20250-3812.