



United States
Department of
Agriculture

National
Agricultural
Statistics
Service



Pou 3-1 (03)

Poultry - Production and Value 2002 Summary

April 2003

USDA



Production and Value by States, 2001-2002

Value of Production and Sales Down 15 Percent

The combined value of production from broilers, eggs, turkeys and the value of sales from chickens in 2002, was \$20.4 billion, down 15 percent from the \$24.0 billion in 2001. Of the combined total, 66 percent was from broilers, 21 percent from eggs, 13 percent from turkeys, and less than 1 percent from other chickens.

Value of Broiler Production Down 20 Percent

The value of broilers produced during 2002 was \$13.4 billion, down 20 percent from 2001. The total number of broilers produced in 2002 was 8.59 billion, up 2 percent from 2001. The total amount of live weight broilers produced in 2002 was 44.1 billion pounds, up 4 percent from 2001. The 2002 average price per pound on a live weight equivalent basis was 30.5 cents per pound, down 22 percent from 39.3 cents in 2001 and the lowest broiler price since 1987.

Value of Egg Production Down 4 Percent

Value of all egg production in 2002 was \$4.26 billion, down 4 percent from the \$4.45 billion in 2001. Egg production totaled 86.7 billion eggs, up 1 percent from the 85.7 billion eggs produced in 2001. In 2002, all eggs averaged 59.0 cents per dozen, compared with 62.2 cents in 2001.

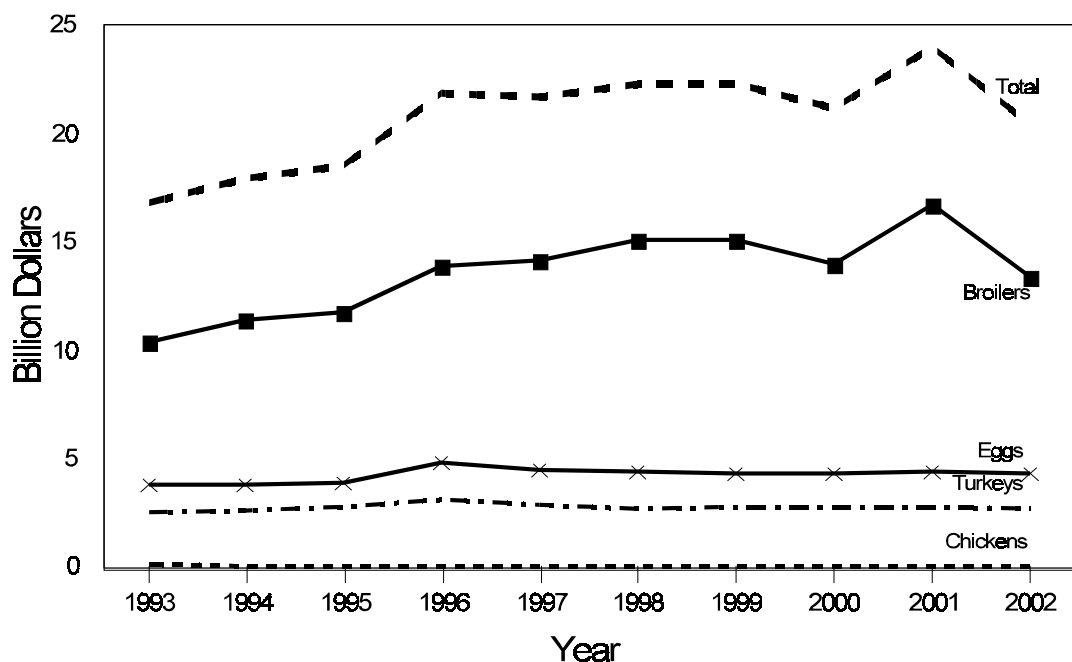
Value of Turkey Production Down 3 Percent

The value of turkeys produced during 2002 was \$2.70 billion, down 3 percent from the \$2.79 billion the previous year. Turkey production in 2002 totaled 7.41 billion pounds, compared with 7.15 billion pounds in 2001. The average price received by producers during 2002 was 36.5 cents per pound, compared with 39.0 cents in 2001.

Value of Sales of Chicken Up 6 Percent

The value of sales from chickens (excluding broilers) in 2002 was \$49.0 million, up 6 percent from the \$46.4 million a year ago. Prices averaged 4.7 cents per pound, compared with 4.5 cents in 2001. The number of chickens sold in 2002 totaled 198 million, down 1 percent from the total sold during the previous year.

Value of Production: Broilers, Eggs, Turkeys, Chickens and Total, United States, 1993-02



**Value of Production: Broilers, Eggs, Turkeys, Chickens,
and Total, United States, 1993-02**

Year	Broilers ¹	Eggs	Turkeys	Chickens ²	Total
	<i>1,000 Dollars</i>	<i>1,000 Dollars</i>	<i>1,000 Dollars</i>	<i>1,000 Dollars</i>	<i>1,000 Dollars</i>
1993	10,416,962	3,800,237	2,509,127	96,409	16,822,735
1994	11,371,723	3,789,834	2,643,057	73,050	17,877,664
1995	11,762,222	3,892,912	2,769,397	60,153	18,484,684
1996	13,903,479	4,776,252	3,124,496	59,187	21,863,414
1997	14,158,926	4,539,929	2,884,377	71,461	21,654,693
1998	15,144,551	4,439,446	2,679,301	75,542	22,338,840
1999	15,128,840	4,287,164	2,809,874	73,150	22,299,028
2000	13,988,434	4,345,382	2,822,736	63,925	21,220,477
2001	16,693,515	4,446,312	2,790,317	46,353	23,976,497
2002	13,434,771	4,262,662	2,700,333	49,023	20,446,789

¹ Excludes States which produced less than 500,000 broilers.

² Value of sales.

**All Eggs: Production, Price, and Value
by State and United States, 2001-02 ¹**

State	Eggs Produced		Price per Dozen ²		Value of Production	
	2001	2002	2001	2002	2001	2002
	<i>Million</i>	<i>Million</i>	<i>Dollars</i>	<i>Dollars</i>	<i>1,000 Dollars</i>	<i>1,000 Dollars</i>
AL	2,359	2,281	1.350	1.560	265,388	296,530
AR	3,431	3,329	1.060	1.070	303,072	296,836
CA	5,998	6,124	0.472	0.392	235,921	200,051
CO	946	1,008	0.612	0.591	48,246	49,644
CT	884	855	0.568	0.520	41,819	37,050
DE	369	347	0.676	0.606	20,787	17,524
FL	2,737	2,731	0.536	0.479	122,253	109,012
GA	5,086	4,961	0.868	0.861	367,887	355,952
HI	129.4	117.5	0.894	0.891	9,640	8,724
ID	251	242	0.586	0.576	12,257	11,616
IL	888	893	0.486	0.442	35,964	32,892
IN	6,025	5,973	0.515	0.479	258,573	238,422
IA	8,691	9,910	0.390	0.343	282,458	283,261
KY	933	921	0.935	0.801	72,696	61,477
LA	480	494	0.793	0.817	31,720	33,633
ME	1,100	1,079	0.618	0.591	56,650	53,136
MD	870	894	0.607	0.565	44,008	42,092
MA	80	80	0.657	0.630	4,380	4,200
MI	1,677	1,771	0.437	0.403	61,063	59,459
MN	3,112	3,124	0.435	0.408	112,810	106,216
MS	1,550	1,588	1.260	1.240	162,750	164,093
MO	1,789	1,837	0.507	0.497	75,585	76,082
MT	95	104	0.410	0.460	3,246	3,987
NE	3,001	2,977	0.382	0.341	95,532	84,596
NH	43	46	0.851	0.783	3,021	2,975
NJ	556	533	0.531	0.512	24,603	22,741
NY	1,143	1,100	0.567	0.489	54,007	44,825
NC	2,535	2,518	1.100	1.090	232,375	228,718
OH	7,900	7,940	0.491	0.447	323,242	295,765
OK	926	951	0.843	0.832	65,052	65,936
OR	818	760	0.600	0.536	40,900	33,947
PA	6,662	6,520	0.547	0.514	303,676	279,273
SC	1,416	1,380	0.674	0.626	79,532	71,990
SD	575	568	0.350	0.332	16,771	15,715
TN	294	300	1.300	1.240	31,850	31,000
TX	4,734	4,774	0.677	0.687	267,077	273,312
UT	865	894	0.440	0.420	31,717	31,290
VT	61	59	0.629	0.623	3,213	3,037
VA	766	734	0.961	0.988	61,344	60,433
WA	1,339	1,369	0.560	0.486	62,501	55,445
WV	235	261	1.410	1.400	27,612	30,450
WI	1,235	1,158	0.500	0.511	51,458	49,312
WY	3.6	3.6	0.560	0.486	168	146
Oth St ³	1,155	1,189	0.359	0.335	41,488	39,867
US ⁴	85,745	86,698	0.622	0.590	4,446,312	4,262,662

¹ Estimates cover the 12 month period Dec 1, previous year through Nov 30.

² Average of all eggs, including hatching eggs.

³ AK, AZ, KS, ND, NM, NV and RI combined to avoid disclosure of individual operations.

⁴ States may not add to U.S. total due to rounding.

**Broilers: Production, Price, and Value
by State and Total, 2001^{1 2}**

State	Number Produced	Pounds Produced	Price per Pound ³	Value of Production
	<i>1,000 Head</i>	<i>1,000 Pounds</i>	<i>Dollars</i>	<i>1,000 Dollars</i>
AL	1,007,600	5,138,800	0.390	2,004,132
AR	1,170,900	5,737,400	0.390	2,237,586
DE	257,700	1,494,700	0.400	597,880
FL	115,300	634,200	0.400	253,680
GA	1,247,300	6,236,500	0.390	2,432,235
HI	890	3,700	0.545	2,017
KY	253,400	1,292,300	0.390	503,997
MD	287,800	1,381,400	0.400	552,560
MN	43,900	219,500	0.390	85,605
MS	765,300	3,826,500	0.390	1,492,335
NE	3,400	18,000	0.390	7,020
NY	2,300	12,200	0.410	5,002
NC	712,300	4,202,600	0.400	1,681,040
OH	40,100	212,500	0.390	82,875
OK	226,800	1,111,300	0.390	433,407
PA	132,300	701,200	0.410	287,492
SC	198,000	1,049,400	0.390	409,266
TN	198,300	932,000	0.390	363,480
TX	565,500	2,714,400	0.390	1,058,616
VA	271,500	1,330,400	0.390	518,856
WV	89,800	368,200	0.390	143,598
WI	31,300	137,700	0.390	53,703
Oth Sts ⁴	767,400	3,690,900	0.403	1,487,133
Total ⁵	8,389,090	42,445,800	0.393	16,693,515
15 Weekly Sts ⁶	7,268,000	37,014,500	0.393	14,564,812

¹ December 1, 2000, through November 30, 2001.

² Broiler production including other domestic meat-type breeds.

³ Liveweight equivalent prices, derived from ready-to-cook (RTC) prices using the following formulas: RTC price minus processing cost X (dressing percentage) = liveweight equivalent price.

⁴ CA, IN, IA, LA, MO, OR & WA, combined to avoid disclosing individual operations.

⁵ Excludes States producing less than 500,000 birds.

⁶ 15 states in the weekly estimating program: AL, AR, CA, DE, FL, GA, MD, MS, NC, PA, SC, TN, TX, VA and WV.

**Broilers: Production, Price, and Value
by State and Total, 2002^{1 2}**

State	Number Produced	Pounds Produced	Price per Pound ³	Value of Production
	<i>1,000 Head</i>	<i>1,000 Pounds</i>	<i>Dollars</i>	<i>1,000 Dollars</i>
AL	1,051,300	5,361,600	0.300	1,608,480
AR	1,186,300	5,812,900	0.300	1,743,870
DE	257,400	1,544,400	0.320	494,208
FL	114,700	630,900	0.310	195,579
GA	1,290,500	6,452,500	0.300	1,935,750
HI	880	3,500	0.555	1,943
KY	269,900	1,403,500	0.300	421,050
MD	292,900	1,376,600	0.320	440,512
MN	44,200	229,800	0.300	68,940
MS	769,500	4,078,400	0.300	1,223,520
NE	3,700	20,700	0.300	6,210
NY	2,400	13,200	0.330	4,356
NC	735,200	4,411,200	0.310	1,367,472
OH	39,000	214,500	0.300	64,350
OK	232,800	1,140,700	0.300	342,210
PA	133,200	706,000	0.320	225,920
SC	192,900	1,080,200	0.300	324,060
TN	186,400	894,700	0.300	268,410
TX	588,100	2,881,700	0.310	893,327
VA	265,500	1,301,000	0.300	390,300
WV	89,700	358,800	0.300	107,640
WI	33,800	145,300	0.300	43,590
Oth Sts ⁴	809,900	3,988,300	0.317	1,263,074
Total ⁵	8,590,180	44,050,400	0.305	13,434,771
19 Weekly Sts ⁶	8,364,700	42,929,500	0.305	13,083,812

¹ December 1, 2001, through November 30, 2002.

² Broiler production including other domestic meat-type strains.

³ Live weight equivalent prices, derived from ready-to-cook (RTC) prices using the following formulas: RTC price minus processing cost X (dressing percentage) = live weight equivalent price.

⁴ CA, IN, IA, LA, MO, OR, & WA, combined to avoid disclosing individual operations.

⁵ Excludes States producing less than 500,000 broilers.

⁶ 19 states in the weekly estimating program: AL, AR, CA, DE, FL, GA, KY, LA, MD, MO, MS, NC, OK, PA, SC, TN, TX, VA and WV.

**Turkeys: Production, Price, and Value
by State and United States, 2001**

State	Number Raised ¹	Pounds Produced	Price per Pound ²	Value of Production
	<i>1,000 Head</i>	<i>1,000 Pounds</i>	<i>Dollars</i>	<i>1,000 Dollars</i>
AR	27,000	472,500	0.40	189,000
CA	18,700	450,670	0.47	211,815
CT	5	108	1.13	122
DE	4	109	0.39	43
IL	2,900	82,650	0.38	31,407
IN	14,000	399,000	0.38	151,620
IA	7,100	216,550	0.35	75,793
MD	460	15,042	0.39	5,866
MA	74	1,591	1.44	2,291
MI	4,500	162,000	0.35	56,700
MN	44,000	1,100,000	0.35	385,000
MO	24,000	660,000	0.41	270,600
NH	6	129	1.47	190
NJ	44	893	0.80	714
NY	510	11,067	0.41	4,537
NC	43,000	1,130,900	0.40	452,360
ND	1,600	42,080	0.35	14,728
OH	4,800	181,440	0.35	63,504
PA	9,500	213,750	0.46	98,325
SC	9,200	325,680	0.39	127,015
SD	4,900	166,110	0.35	58,139
VT	45	968	1.40	1,355
VA	24,000	530,400	0.39	206,856
WV	4,100	90,610	0.39	35,338
Oth Sts ³	27,611	900,534	0.39	346,999
US	272,059	7,154,781	0.390	2,790,317

¹ Based on turkeys placed Sep 1, 2000, through Aug 31, 2001. Excludes young turkeys lost.

² AR, CA, IL, IN, IA, MO, NY, NC, SC, VA and WV prices are equivalent live weight returns to producers. All other States' prices are actual live weight prices.

³ CO, KS, NE, OK, OR, TX, UT, and WI combined to avoid disclosing individual operations.

**Turkeys: Production, Price, and Value
by State and United States, 2002**

State	Number Raised ¹	Pounds Produced	Price per Pound ²	Value of Production
	<i>1,000 Head</i>	<i>1,000 Pounds</i>	<i>Dollars</i>	<i>1,000 Dollars</i>
AR	29,500	522,150	0.38	198,417
CA	17,700	438,960	0.36	158,026
CT	7	174	1.27	221
DE	3	94	0.37	35
IL	2,900	89,900	0.36	32,364
IN	13,000	403,000	0.36	145,080
IA	6,800	211,480	0.36	76,133
MD	435	14,181	0.37	5,247
MA	68	1,686	1.50	2,529
MI	4,800	179,520	0.35	62,832
MN	44,000	1,148,400	0.36	413,424
MO	25,500	782,850	0.36	281,826
NH	5	124	1.59	197
NJ	34	697	0.79	551
NY	520	12,220	0.37	4,521
NC	45,500	1,160,250	0.37	429,293
ND	1,900	49,590	0.33	16,365
OH	5,400	207,360	0.35	72,576
PA	9,900	233,640	0.39	91,120
SC	9,900	369,270	0.37	136,630
SD	4,800	158,880	0.35	55,608
VT	46	1,141	1.37	1,563
VA	20,000	446,000	0.37	165,020
WV	3,600	80,280	0.37	29,704
Oth Sts ³	26,111	894,203	0.36	321,051
US	272,429	7,406,050	0.365	2,700,333

¹ Based on turkeys placed Sep 1, 2001, through Aug 31, 2002. Excludes young turkeys lost.

² CT, MA, MI, NH, NJ, ND, PA, UT, and VT are actual live weight prices. All other States are equivalent live weight returns to producers.

³ CO, KS, NE, OK, OR, TX, UT, and WI combined to avoid disclosing individual operations.

**Chickens: Lost, Sold for Slaughter, Price, and Value
by State and United States, 2001 ¹**

State	Number Lost ²	Number Sold for Slaughter	Pounds Sold	Price per Pound	Value of Sales
	<i>1,000 Head</i>	<i>1,000 Head</i>	<i>1,000 Pounds</i>	<i>Dollars</i>	<i>1,000 Dollars</i>
AL	1,863	8,879	64,817	0.072	4,667
AR	2,935	14,310	97,308	0.080	7,785
CA	2,886	10,690	39,553	0.010	396
CO	960	1,457	6,119	0.002	12
CT	286	2,236	8,497	0.005	42
DE	173	1,443	7,215	0.011	79
FL	2,806	2,863	11,738	0.026	305
GA	5,264	19,630	147,225	0.078	11,484
HI	145	182	655	0.169	111
ID	90	375	1,463	0.020	29
IL	391	1,890	6,426	0.010	64
IN	1,970	10,011	34,037	0.010	340
IA	6,867	10,802	43,208	0.001	43
KY	537	2,800	16,520	0.060	991
LA	212	1,308	7,456	0.060	447
ME	1,102	2,245	8,756	0.004	35
MD	334	1,888	7,552	0.010	76
MA	22	683	2,664	0.004	11
MI	889	3,657	12,800	0.010	128
MN	1,635	5,792	20,851	0.001	21
MS	1,295	6,371	45,871	0.082	3,761
MO	908	3,375	16,875	0.030	506
MT	35	109	392	0.010	4
NE	2,636	4,830	16,422	0.001	16
NH	11	227	1,294	0.039	50
NJ	168	590	2,006	0.001	2
NY	482	2,613	10,975	0.001	11
NC	1,326	11,212	86,332	0.080	6,907
OH	4,969	17,038	57,929	0.001	58
OK	733	3,250	19,500	0.050	975
OR	348	1,219	4,388	0.001	4
PA	2,495	14,983	53,939	0.010	539
SC	2,017	2,145	16,517	0.046	760
SD	874	659	2,307	0.071	164
TN	172	1,335	8,811	0.059	520
TX	2,526	14,301	68,645	0.035	2,403
UT	272	1,499	5,247	0.020	105
VT	17	113	531	0.021	11
VA	427	2,943	20,012	0.075	1,501
WA	716	2,723	9,531	0.001	10
WV	210	1,073	8,584	0.090	773
WI	1,432	1,892	7,946	0.024	191
WY	1	12	41	0.020	1
Oth Sts ³	709	2,209	7,753	0.002	15
US	56,146	199,862	1,016,708	0.045	46,353

¹ Estimates cover the 12 month period Dec 1, previous year through Nov 30 and excludes broilers.

² Includes rendered, died, destroyed, composted or disappeared for any reason during the 12-month period.

³ AK, AZ, KS, ND, NM, NV and RI combined to avoid disclosing individual operations.

**Chickens: Lost, Sold for Slaughter, Price, and Value
by State and United States, 2002 ¹**

State	Number Lost ²	Number Sold for Slaughter	Pounds Sold	Price per Pound	Value of Sales
	<i>1,000 Head</i>	<i>1,000 Head</i>	<i>1,000 Pounds</i>	<i>Dollars</i>	<i>1,000 Dollars</i>
AL	1,634	9,229	70,140	0.076	5,331
AR	2,740	14,560	115,024	0.080	9,202
CA	3,106	9,761	36,116	0.008	289
CO	1,104	1,337	5,348	0.002	11
CT	276	2,122	7,851	0.003	24
DE	176	985	4,334	0.022	95
FL	2,879	4,122	19,373	0.041	794
GA	5,131	16,947	127,103	0.082	10,422
HI	118	158	569	0.179	102
ID	90	512	1,946	0.010	19
IL	442	1,329	5,316	0.015	80
IN	2,155	7,220	24,548	0.005	123
IA	7,137	12,014	42,049	0.001	42
KY	390	3,217	19,945	0.063	1,257
LA	482	1,344	7,661	0.056	429
ME	494	2,690	10,491	0.004	42
MD	338	2,345	9,146	0.010	91
MA	16	230	897	0.005	4
MI	467	3,620	12,670	0.001	13
MN	1,651	5,054	18,194	0.001	18
MS	945	7,590	54,648	0.080	4,372
MO	823	3,607	19,839	0.050	992
MT	37	115	414	0.010	4
NE	2,940	5,161	18,064	0.001	18
NH	12	252	1,411	0.036	51
NJ	143	1,151	3,913	0.001	4
NY	329	2,390	10,038	0.001	10
NC	1,321	13,264	102,133	0.070	7,149
OH	5,244	17,290	60,515	0.005	303
OK	737	3,260	19,560	0.080	1,565
OR	308	876	3,066	0.001	3
PA	2,014	14,694	52,898	0.010	529
SC	2,671	2,232	13,392	0.006	80
SD	740	567	1,985	0.027	54
TN	205	1,657	11,102	0.065	722
TX	2,504	12,897	63,195	0.039	2,465
UT	260	2,003	7,812	0.010	78
VT	17	211	823	0.007	6
VA	686	2,765	16,867	0.062	1,046
WA	569	2,272	7,498	0.001	7
WV	223	1,432	11,313	0.087	984
WI	1,049	1,733	7,105	0.022	156
WY	1	12	41	0.001	0
Oth Sts ³	563	1,808	6,332	0.006	37
US	55,167	198,035	1,032,685	0.047	49,023

¹ Estimates cover the 12 month period Dec 1, previous year through Nov 30 and excludes broilers.

² Includes rendered, died, destroyed, composted or disappeared for any reason during the 12-month period.

³ AK, AZ, KS, ND, NM, NV and RI combined to avoid disclosing individual operations.

Released April 29, 2003, by the National Agricultural Statistics Service (NASS), Agricultural Statistics Board, U.S. Department of Agriculture. For information on Eggs and Chickens, call Tom Kruchten at (202) 690-4870, Broilers, call Jody Roberts at (202) 690-8632, Turkeys, call John Lange at (202) 720-0585, office hours 7:30 a.m. to 4:00 p.m. ET.

The next "Poultry - Production and Value 2003 Summary" report will be released in April 2004.

The United States Department of Agriculture (USDA) prohibits discrimination in all its programs on the basis of race, color, national origin, gender, religion, age, disability, political beliefs, sexual orientation, and marital or family status. (Not all prohibited bases apply to all programs.) Persons with disabilities who require alternative means for communication of program information (braille, large print, audiotape, etc.) should contact the USDA's TARGET Center at 202-720-2600 (voice and TDD).

To file a complaint of discrimination, write USDA, Director, Office of Civil Rights, Room 326-W, Whitten Building, 1400 Independence Avenue, SW, Washington, D.C., 20250-9410, or call 202-720-5964 (voice or TDD). USDA is an equal opportunity provider and employer.

ACCESS TO REPORTS!!

For your convenience, there are several ways to obtain NASS reports, data products, and services:

INTERNET ACCESS

All NASS reports are available free of charge on the worldwide Internet. For access, connect to the Internet and go to the NASS Home Page at: <http://www.usda.gov/nass/>. Select "Today's Reports" or Publications and then Reports Calendar or Publications and then Search, by Title or Subject.

E-MAIL SUBSCRIPTION

All NASS reports are available by subscription free of charge direct to your e-mail address. Starting with the NASS Home Page at <http://www.usda.gov/nass/>, click on **Publications**, then click on the **Subscribe by E-mail** button which takes you to the page describing e-mail delivery of reports. Finally, click on **Go to the Subscription Page** and follow the instructions.

AUTOFAX ACCESS

NASSFax service is available for some reports from your fax machine. Please call 202-720-2000, using the handset attached to your fax. Respond to the voice prompts. Document 0411 is a list of available reports.

PRINTED REPORTS OR DATA PRODUCTS

CALL OUR TOLL-FREE ORDER DESK: 800-999-6779 (U.S. and Canada)
Other areas, please call 703-605-6220 FAX: 703-605-6900
(Visa, MasterCard, check, or money order acceptable for payment.)

ASSISTANCE

For **assistance** with general agricultural statistics or further information about NASS or its products or services, contact the **Agricultural Statistics Hotline** at **800-727-9540**, 7:30 a.m. to 4:00 p.m. ET, or e-mail: nass@nass.usda.gov.
