

POULTRY SLAUGHTER



Released: December 8, 1983
3:00 P.M. ET

Statistical Reporting
Service

U.S. Department
of Agriculture
Washington, D.C.
20250

October 1983

The preliminary total of Live Weight Poultry Inspections was 1.82 billion pounds (827 thousand metric tons) for October 1983, according to the Crop Reporting Board.

Inspections included 1.40 billion pounds (635 thousand metric tons) of young chickens, 1 percent above October 1982, and 61.6 million pounds (28.0 thousand metric tons) of mature chickens, a decrease of 8 percent from October 1982. Turkey inspections totaled 349 million pounds (158 thousand metric tons), 1 percent above a year ago. Duck inspections of 10.9 million pounds (4960 metric tons) were 4 percent above October last year.

Poultry Certified Wholesome during October 1983 was 1.36 billion pounds (615 thousand metric tons) ready-to-cook weight. Updated totals for September 1983 show 1.36 billion pounds (616 thousand metric tons) were certified.

Ante-Mortem Condemnations during October 1983 totaled 4.25 million pounds (1930 metric tons). Condemnations were .23 percent of the live weight inspected compared with .26 percent during October a year ago. Post-Mortem Condemnations were 24.3 million pounds (11.0 thousand metric tons) (N.Y.D. Weight), 1.48 percent of the quantities inspected compared with 1.54 percent a year earlier.

Further Processed poultry totaled 410 million pounds (186 thousand metric tons) ready-to-cook weight. Cut-up packaged poultry totaled 559 million pounds (253 thousand metric tons).

* NOTICE: Detail tables on numbers of birds condemned by causes for *
* Mature Chickens, Young Turkeys, Fryer-Roaster Turkeys, and Old Turkeys *
* were unavailable for this report. These tables will be included in the *
* next release of Poultry Slaughter scheduled for January 4, 1984. *
* *
* The data presented in this report were compiled by the Meat and Poultry *
* Inspection Program, Food Safety Inspection Service. Data for October *
* 1983 include reports available for summary in late November. The *
* degree of incompleteness due to late reports will vary from month to *
* month. *
* *
* Request for a subscription order form covering all available reports *
* should be directed to Crop Reporting Board Publications, Room 5829- *
* South Building, USDA, Washington, D.C. 20250 (Phone: (202) 447-4021). *

POULTRY: SLAUGHTERED UNDER FEDERAL INSPECTION, OCTOBER 1983 WITH COMPARISONS

NUMBER INSPECTED	CHICKENS			TURKEY			DUCKS	OTHER POULTRY	TOTAL POULTRY
	YOUNG	MATURE	TOTAL	FRYER-ROASTERS	YOUNG 2/	OLD			
SEPTEMBER 1983	349,947	14,320	364,267	484	16,885	76	17,445	1,792	---
OCTOBER 1982	336,440	14,736	351,176	554	17,116	88	17,758	1,633	---
OCTOBER 1983	338,700	13,154	351,854	503	17,279	68	17,850	1,739	---
JAN-OCT 1982	3,431,780	167,286	3,599,066	5,169	123,766	1,168	130,103	16,272	---
JAN-OCT 1983	3,507,022	154,258	3,661,280	3,719	130,622	1,103	135,444	17,187	---
POUNDS INSPECTED									
SEPTEMBER 1983	1,416,745	65,763	1,482,508	4,437	325,102	1,583	331,122	10,863	1,825,174
OCTOBER 1982	1,381,465	67,231	1,448,696	5,151	339,370	1,869	346,390	10,470	1,807,905
OCTOBER 1983	1,399,445	61,648	1,461,093	4,785	342,520	1,525	348,530	10,928	1,823,082
JAN-OCT 1982	13,846,777	750,167	14,596,944	47,919	2,405,711	24,584	2,478,314	102,904	5,242,183,404
JAN-OCT 1983	14,312,117	700,049	15,012,166	34,135	2,560,686	23,511	2,618,332	107,381	5,955,17,743,834

1/ OF THE MATURE CHICKENS INSPECTED, THE NUMBER REPORTED IN THOUSANDS AS HEAVY FOWL (BROILER BREEDING STOCK) WAS:

	SEPTEMBER 1983	OCTOBER 1982	OCTOBER 1983
AVERAGE LIVEWEIGHT	4.05	4.59	4.07
SEPTEMBER 1983	4.10	4.56	4.12
OCTOBER 1982	4.13	4.68	4.15
OCTOBER 1983	4.03	4.48	4.05
JAN-OCT 1982	4.08	4.53	4.10
JAN-OCT 1983			

2/ OF THE YOUNG TURKEYS INSPECTED, THE NUMBER REPORTED IN THOUSANDS AS YOUNG BANDED BREEDERS WAS:

	OCTOBER 1982	OCTOBER 1983
SEPTEMBER 1983	2,939	3,127
CHILLED FROZEN	055	062
TOTAL	055	062

POULTRY: POUNDS CERTIFIED (READY-TO-COOK WEIGHTS), OCTOBER 1983 WITH COMPARISONS

NUMBER INSPECTED	CHICKENS			TURKEY			DUCKS	OTHER POULTRY	TOTAL POULTRY
	YOUNG	MATURE	TOTAL	FRYER-ROASTERS	YOUNG	OLD			
SEPTEMBER 1983	970,925	36,076	1,007,001	2,691	69,914	617	73,222	1,260	1,081,525
OCTOBER 1982	73,823	4,966	78,789	794	189,057	626	190,477	6,272	275,906
OCTOBER 1983	1,044,748	41,042	1,085,790	3,485	258,971	1,243	263,699	7,532	1,357,431
JAN-OCT 1982	930,465	34,757	965,222	3,127	75,641	947	79,715	879	1,046,117
JAN-OCT 1983	79,942	6,798	86,740	939	195,422	523	196,884	6,348	291,203
CHILLED FROZEN	1,010,407	41,555	1,051,962	4,066	271,063	1,470	276,599	7,227	1,337,320
OCTOBER 1982	954,455	33,063	987,518	2,995	78,815	764	82,574	1,427	1,071,559
OCTOBER 1983	75,417	5,696	81,113	771	193,641	439	194,851	6,206	283,808
JAN-OCT 1982	1,029,872	38,759	1,068,631	3,766	272,456	1,203	277,425	7,633	1,355,367
JAN-OCT 1983	9,391,053	383,609	9,774,662	25,842	552,307	10,645	588,794	7,918	10,361,692
CHILLED FROZEN	756,905	80,020	836,925	11,873	1,367,184	8,493	1,387,550	64,201	2,291,534
TOTAL	10,137,958	463,629	10,601,587	37,715	1,919,491	19,138	1,976,344	72,119	12,653,226
JAN-OCT 1983	9,720,824	366,957	10,087,781	20,988	616,738	10,316	648,042	11,643	10,747,682
CHILLED FROZEN	780,767	68,226	848,993	5,879	1,419,529	8,044	1,433,452	63,150	2,348,978
TOTAL	10,501,591	435,183	10,936,774	26,867	2,036,267	18,360	2,081,494	74,793	13,096,660

POULTRY: CONDEMNATIONS OF POULTRY SLAUGHTERED UNDER FEDERAL INSPECTION, OCTOBER 1983 WITH COMPARISONS

	TURKEY									
	CHICKENS					DUCKS				
	YOUNG	MATURE	TOTAL	FRYER-ROASTERS	YOUNG	OLD	TOTAL	DUCKS	OTHER	TOTAL
ANTE-MORTEM										
1,000 POUNDS (LIVEWEIGHT)										
SEPTEMBER 1983	3,599	617	4,216	5	895	9	909	13	3	5,141
OCTOBER 1982	3,329	617	3,946	8	775	13	796	8	1	4,751
OCTOBER 1983	3,090	526	3,616	6	612	7	625	9	4	4,254
JAN-OCT 1982	41,165	9,211	50,376	108	5,976	162	6,246	130	6	56,758
JAN-OCT 1983	40,411	8,093	48,504	32	6,730	165	6,927	108	11	55,550
PERCENT 1/	.24	.91	.27	.15	.22	.72	.22	.08	.08	.26
OCTOBER 1982	.22	.85	.24	.12	.17	.48	.17	.08	.21	.23
OCTOBER 1983										
POST-MORTEM										
1,000 POUNDS (N.Y. DRESSED)										
SEPTEMBER 1983	16,721	1,991	18,712	41	6,207	70	6,318	175	8	25,213
OCTOBER 1982	17,028	2,153	19,181	43	5,559	79	5,681	147	13	25,022
OCTOBER 1983	16,021	1,925	17,946	41	6,049	39	6,129	213	25	24,313
JAN-OCT 1982	183,677	23,668	207,345	428	37,498	1,012	38,938	1,573	42	247,898
JAN-OCT 1983	185,856	22,568	208,424	301	40,642	832	41,775	1,747	62	252,008
PERCENT 2/	1.37	3.59	1.47	.94	1.82	4.81	1.82	1.56	.77	1.54
OCTOBER 1982	1.27	3.50	1.36	.98	1.96	2.93	1.95	2.17	1.23	1.48
OCTOBER 1983										

1/ POUNDS CONDEMNED AS PERCENT OF POUNDS (LIVEWEIGHT) INSPECTED. PERCENTAGE BASED ON UNROUNDED DATA.
 2/ POUNDS CONDEMNED AS PERCENT OF EQUIVALENT N.Y. DRESSED WEIGHT OF QUANTITY INSPECTED. PERCENTAGES BASED ON UNROUNDED DATA.

POULTRY: FURTHER PROCESSED AND CUT-UP (READY-TO-COOK) UNDER FEDERAL INSPECTION, OCTOBER 1983 WITH COMPARISONS

	CHICKENS						TURKEYS						TOTAL POULTRY
	YOUNG	MATURE	CUT-UP	FURTHER PROCESSED	WHOLE	CARCASS	YOUNG	MATURE	CUT-UP	FURTHER PROCESSED	WHOLE	CARCASS	
READY-TO-COOK WEIGHT POUNDS USED													
SEPTEMBER 1983	165,285	543,926	48,758	975	87,184	109,969	73,422	34,880	555	446,076	618,878		
OCTOBER 1982	135,822	514,160	47,900	3,517	89,601	104,702	75,651	29,035	131	407,060	593,459		
OCTOBER 1983	159,277	493,085	39,332	1,560	86,728	95,432	62,654	28,998	1,307	409,767	558,606		
JAN-OCT 1982	1,261,723	4,841,769	408,993	18,316	635,139	820,973	596,902	271,561	2,157	3,398,389	5,459,144		
JAN-OCT 1983	1,519,059	5,347,975	451,371	19,903	606,282	938,589	649,899	295,000	12,641	3,810,301	6,030,418		
PERCENT 1/	1.990	2.554	1.73	---	13	261	83	692	---	3,129	2,637		
OCTOBER 1982	3,199	2,891	61	30	14	290	576	167	---	3,731	3,437		
OCTOBER 1983	1,449	2,478	96	---	12	199	85	239	1	1,995	2,564		
JAN-OCT 1982	42,310	31,971	906	334	96	2,746	4,724	3,534	5	49,592	37,034		
JAN-OCT 1983	25,126	34,215	1,566	28	150	2,050	1,083	2,807	9	31,699	35,335		

1/ POULTRY PARTS AND FATS USED IN FURTHER PROCESSING THAT CANNOT BE IDENTIFIED BY CLASS ARE INCLUDED IN 'OTHER POULTRY'.
 2/ WHOLE CARCASS TURKEYS WHICH HAVE BEEN INJECTED, BASTED, MARINATED, SMOKED, BARBECUED, ETC., AND PACKED AS SUCH.
 3/ DATA DOES NOT INCLUDE TOTAL CONDEMNATIONS TO AVOID DISCLOSURE OF INDIVIDUAL OPERATIONS.

YOUNG CHICKENS: SLAUGHTERED UNDER FEDERAL INSPECTION, UNITED STATES TOTAL AND SELECTED STATE(S), OCTOBER 1982 AND 1983

STATE	NUMBER INSPECTED		POUNDS INSPECTED (LIVEWEIGHT)		AVERAGE LIVEWEIGHT INSPECTED/1		TOTAL POUNDS CERTIFIED		POST-MORTEM CONDEMNATIONS				
	1982	1983	1982	1983	1982	1983	1982	1983	1982	1983			
UNITED STATES	336,440	338,700	1,381,465	1,399,445	4.10	4.13	1,010,407	1,029,872	17,028	16,021	1.37	1.27	
ALABAMA	40,050	42,004	156,558	167,924	3.90	3.99	115,309	126,000	1,784	1,747	1.26	1.15	
ARKANSAS	51,301	53,713	200,485	210,372	3.90	3.91	145,575	152,556	2,399	2,273	1.33	1.20	
CALIFORNIA	13,456	13,081	62,213	60,225	4.62	4.60	46,132	44,062	1,148	1,173	2.05	2.17	
DELAWARE	13,631	14,391	66,748	69,328	4.89	4.81	49,576	51,033	891	780	1.49	1.25	
FLORIDA	5,797	6,859	23,387	28,348	4.03	4.13	16,904	20,523	219	309	1.05	1.22	
GEORGIA	48,326	47,656	197,315	195,367	4.08	4.09	145,771	145,799	2,350	2,059	1.32	1.17	
INDIANA	1,410	1,466	5,458	5,699	3.87	3.88	3,989	4,305	77	133	1.59	2.63	
LOUISIANA	7,462	8,229	29,688	31,414	3.97	3.81	18,931	24,619	307	308	1.15	1.09	
MARYLAND	16,392	15,330	67,770	62,799	4.13	4.09	49,744	44,673	803	606	1.32	1.07	
MASSACHUSETTS	3/	1,154	2,404	2,799	2.08	2.01	---	---	29	37	1.41	1.48	
MISSISSIPPI	25,149	24,602	102,805	101,074	4.08	4.10	77,659	76,063	985	1,062	1.06	1.17	
MISSOURI	6,474	6,619	26,477	28,174	4.08	4.25	19,091	20,547	457	282	1.92	1.12	
NEW YORK	502	700	2,104	3,219	4.19	4.59	1,319	2,041	33	47	1.78	1.66	
NORTH CAROLINA	34,529	33,306	145,411	145,731	4.21	4.37	106,689	106,600	1,872	1,773	1.43	1.35	
OREGON	---	1,110	5,218	---	4.70	---	---	3,569	---	142	---	3.06	---
PENNSYLVANIA	7,720	6,254	31,792	25,852	4.11	4.13	22,760	18,296	612	463	2.14	1.99	
SOUTH CAROLINA	6,225	6,135	22,952	22,880	3.68	3.72	16,019	16,097	310	266	1.51	1.30	
TENNESSEE	6,534	6,388	25,676	25,487	3.93	3.98	18,849	19,062	239	206	1.04	1.90	
TEXAS	18,418	19,552	76,358	81,290	4.14	4.15	56,657	60,342	757	851	1.10	1.16	
VIRGINIA	18,700	17,381	79,904	73,913	4.27	4.25	57,531	53,628	813	702	1.13	1.05	
WASHINGTON	1,555	1,526	6,898	6,726	4.43	4.40	5,095	5,003	155	113	2.53	1.88	

1/ AVERAGE WEIGHT BASED ON UNROUNDED DATA.

2/ POUNDS CONDEMNED AS PERCENT OF EQUIVALENT N.Y. DRESSED WEIGHT OF QUANTITY INSPECTED. PERCENTAGES BASED ON UNROUNDED DATA

3/ DATA NOT PUBLISHED TO AVOID DISCLOSURE OF INDIVIDUAL OPERATIONS.

YOUNG CHICKENS: NUMBER CONDEMNED POST-MORTEM BY CAUSE, UNITED STATES TOTAL AND SELECTED STATE(S), OCTOBER 1983

STATE	TUBERCULOSIS		LEUROSIS		KOSIS		SEPTICEMIA		AIRSAC-CULITIS		SYNDROMIC VITIS		TUMORS		BRUISES		CADAVER INACTION		CONTAMINATION		OVERSCALD		OTHER		TOTAL	
	1982	1983	1982	1983	1982	1983	1982	1983	1982	1983	1982	1983	1982	1983	1982	1983	1982	1983	1982	1983	1982	1983	1982	1983		
UNITED STATES	---	108,073	1,068,070	494,053	18,950	86,908	53,208	101,340	179,336	33,730	99,932	2,243,600	---	---	---	---	---	---	---	---	---	---	---	---	---	
ALABAMA	---	5,551	119,913	44,370	2,710	14,790	6,707	10,426	18,265	3,189	4,921	230,842	---	---	---	---	---	---	---	---	---	---	---	---	---	
ARKANSAS	---	5,362	164,736	79,104	5,915	13,514	8,497	12,515	20,093	4,610	8,418	322,764	---	---	---	---	---	---	---	---	---	---	---	---	---	
CALIFORNIA	---	2,468	86,536	61,740	983	2,327	1,230	3,574	4,833	3,791	1,781	169,263	---	---	---	---	---	---	---	---	---	---	---	---	---	
DELAWARE	---	24,845	38,394	19,087	234	4,789	1,294	5,770	5,654	762	5,717	106,546	---	---	---	---	---	---	---	---	---	---	---	---	---	
FLORIDA	---	430	23,864	7,629	1,158	2,960	1,388	2,532	6,176	168	2,658	48,963	---	---	---	---	---	---	---	---	---	---	---	---	---	
GEORGIA	---	2,923	128,691	35,223	1,420	11,921	7,868	15,804	44,264	3,603	12,192	263,909	---	---	---	---	---	---	---	---	---	---	---	---	---	
INDIANA 1/	---	---	---	---	---	---	---	---	---	---	---	---	---	---	---	---	---	---	---	---	---	---	---	---	---	
LOUISIANA	---	990	20,695	6,319	238	1,502	903	2,992	5,349	708	1,602	41,298	---	---	---	---	---	---	---	---	---	---	---	---	---	
MARYLAND	---	11,839	43,000	21,319	367	4,091	1,857	4,234	6,977	792	3,792	98,268	---	---	---	---	---	---	---	---	---	---	---	---	---	
MASSACHUSETTS	---	---	---	---	---	---	---	---	---	---	---	---	---	---	---	---	---	---	---	---	---	---	---	---	---	---
MISSISSIPPI	---	4,244	60,869	33,003	1,091	3,185	3,030	6,465	10,332	2,268	2,532	127,019	---	---	---	---	---	---	---	---	---	---	---	---	---	
MISSOURI	---	672	17,463	6,411	482	1,315	1,012	2,307	3,030	612	35,939	---	---	---	---	---	---	---	---	---	---	---	---	---	---	
NEW YORK	---	1,981	1,560	670	21	387	865	---	---	---	---	---	---	---	---	---	---	---	---	---	---	---	---	---	---	
NORTH CAROLINA	---	5,397	143,697	94,058	184	8,104	4,558	8,376	14,501	2,685	20,327	301,887	---	---	---	---	---	---	---	---	---	---	---	---	---	
OREGON 1/	---	---	---	---	---	---	---	---	---	---	---	---	---	---	---	---	---	---	---	---	---	---	---	---	---	
PENNSYLVANIA	---	14,629	23,142	11,283	380	1,122	1,816	1,856	8,543	33	9,162	71,966	---	---	---	---	---	---	---	---	---	---	---	---	---	
SOUTH CAROLINA	---	292	22,452	11,219	255	2,053	2,630	4,786	2,566	903	6,882	54,038	---	---	---	---	---	---	---	---	---	---	---	---	---	
TENNESSEE	---	486	17,369	2,139	85	2,075	637	1,643	1,943	158	1,817	28,352	---	---	---	---	---	---	---	---	---	---	---	---	---	
TEXAS	---	7,844	61,104	25,192	603	4,382	3,663	5,811	8,016	1,139	1,808	119,562	---	---	---	---	---	---	---	---	---	---	---	---	---	
VIRGINIA	---	9,777	33,914	15,556	68	4,745	1,352	6,484	5,849	3,199	86,303	---	---	---	---	---	---	---	---	---	---	---	---	---	---	
WASHINGTON	---	187	9,763	496	391	996	624	533	110	---	---	---	---	---	---	---	---	---	---	---	---	---	---	---	---	

1/ DATA NOT PUBLISHED TO AVOID DISCLOSURE OF INDIVIDUAL OPERATIONS.

MATURE CHICKENS: SLAUGHTERED UNDER FEDERAL INSPECTION, UNITED STATES TOTAL AND SELECTED STATE(S), OCTOBER 1982 AND 1983

STATE	NUMBER INSPECTED		POUNDS INSPECTED (LIVEWEIGHT)		AVERAGE LIVEWEIGHT INSPECTED/1		TOTAL POUNDS CERTIFIED (READY-TO-COOK WT.)		POST-MORTEM CONDEMNATIONS	
	1982	1983	1982	1983	1982	1983	1982	1983	1982	1983
UNITED STATES	14,736	13,154	67,231	61,648	4.56	4.68	41,555	38,759	2,153	1,925
CALIFORNIA	3/	1,438	5,810	4,820	4.03	4.02	---	2,912	232	136
GEORGIA		2,997	16,837	14,901	5.61	6.09	10,650	9,626	456	403
NEW JERSEY	3/	---	---	---	---	---	---	4,736	---	256

1/ AVERAGE WEIGHT BASED ON UNROUNDED DATA.

2/ POUNDS CONDEMNED AS PERCENT OF EQUIVALENT N.Y. DRESSED WEIGHT OF QUANTITY INSPECTED. PERCENTAGES BASED ON UNROUNDED DATA

3/ DATA NOT PUBLISHED TO AVOID DISCLOSURE OF INDIVIDUAL OPERATIONS.

YOUNG TURKEYS (MATURE): SLAUGHTERED UNDER FEDERAL INSPECTION, UNITED STATES TOTAL AND SELECTED STATE(S), OCTOBER 1982 AND 1983

STATE	NUMBER INSPECTED		POUNDS INSPECTED (LIVEWEIGHT)		AVERAGE LIVEWEIGHT INSPECTED/1		TOTAL POUNDS CERTIFIED (READY-TO-COOK WT.)		POST-MORTEM CONDEMNATIONS	
	1982	1983	1982	1983	1982	1983	1982	1983	1982	1983
UNITED STATES	17,116	17,279	339,370	342,220	19.82	19.80	271,063	272,456	5,559	6,049
ARKANSAS		1,212	22,574	24,437	18.61	18.64	18,279	19,611	464	606
CALIFORNIA		2,113	41,883	38,651	19.81	20.60	33,823	31,168	718	613
COLORADO	3/	---	---	10,125	---	26.60	---	7,277	---	174
INDIANA		748	12,665	15,887	16.92	18.43	10,173	12,650	195	246
IOWA		1,191	26,245	24,025	22.02	21.63	20,354	18,882	451	484
MASSACHUSETTS	3/	---	---	---	---	---	---	---	---	---
MINNESOTA		3,596	68,121	65,629	18.94	18.45	55,061	52,898	1,077	1,059
MISSOURI		1,258	23,993	25,834	19.06	18.24	19,291	20,952	451	539
NEW JERSEY	3/	---	---	---	---	---	---	---	---	---
NEW YORK		26	644	583	24.08	22.05	489	438	4	12
NORTH CAROLINA		1,711	32,558	29,984	19.02	18.24	25,883	24,417	406	342
OHIO		375	8,298	5,263	22.09	26.38	6,435	4,093	203	108
PENNSYLVANIA		683	13,648	15,173	19.98	19.69	10,931	12,074	135	226
TEXAS	3/	443	8,622	10,787	19.44	19.80	---	8,274	---	252
VIRGINIA	3/	1,552	29,406	32,054	18.94	18.89	---	25,040	---	416
WISCONSIN	3/	552	10,783	11,501	19.52	18.55	---	---	97	116

1/ AVERAGE WEIGHT BASED ON UNROUNDED DATA.

2/ POUNDS CONDEMNED AS PERCENT OF EQUIVALENT N.Y. DRESSED WEIGHT OF QUANTITY INSPECTED. PERCENTAGES BASED ON UNROUNDED DATA

3/ DATA NOT PUBLISHED TO AVOID DISCLOSURE OF INDIVIDUAL OPERATIONS.

Definitions Used to Report Federally Inspected Slaughter.

Young chickens - Commercially grown broilers-fryers and other young immature birds such as roasters and capons.

Mature chickens - Fowl from breeder and market egg flocks and stags and cocks.

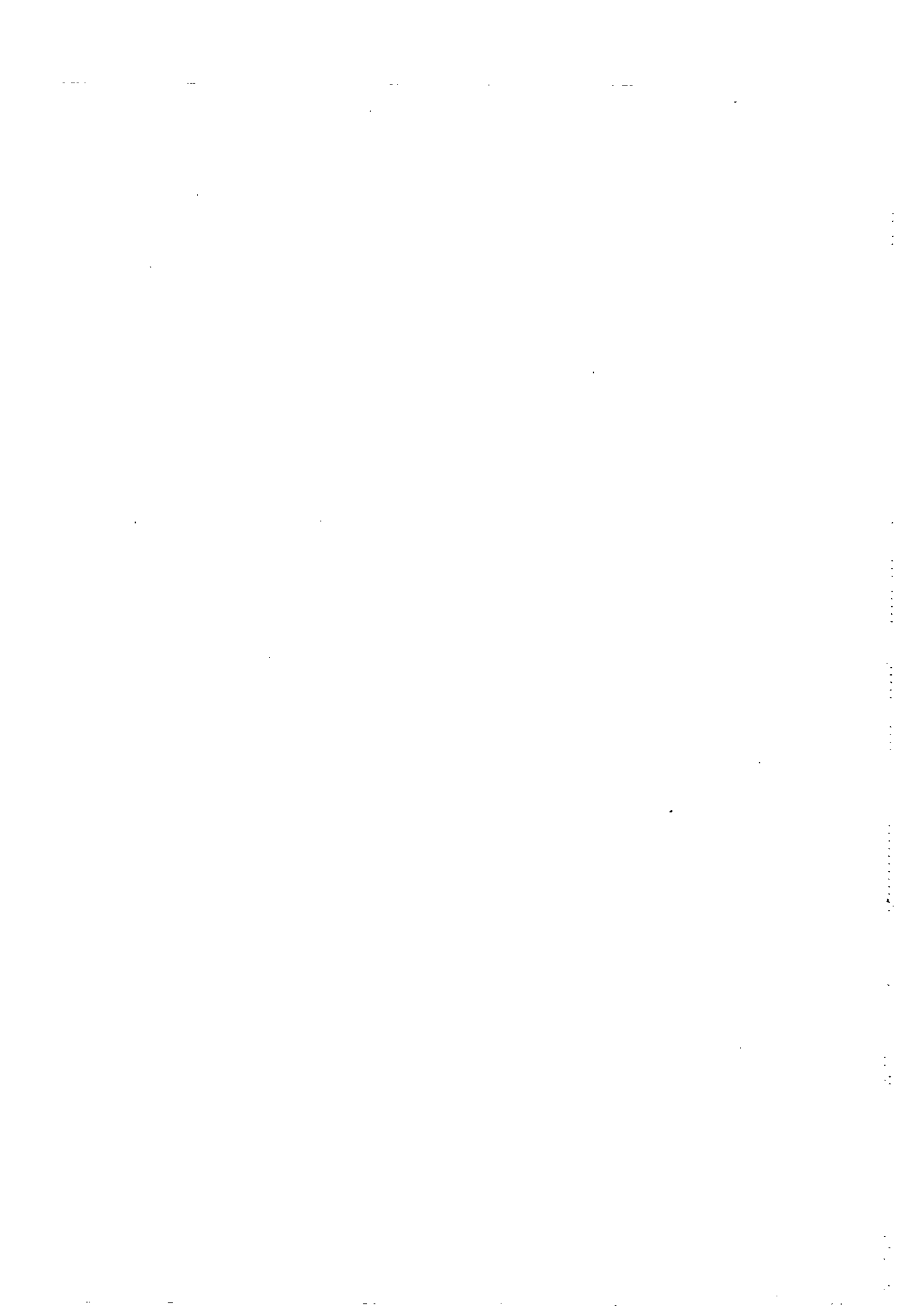
Fryer-roaster turkeys - Young immature birds, usually under 16 weeks of age.

Young turkeys (mature) - Young birds grown to a matured market age, usually 5 to 7 months.

Old turkeys (breeders) - Fully matured birds held for egg production, usually over 15 months of age.

Ducks - Includes all ducks regardless of age and weight.

Other poultry - Includes all other ready-to-cook products which bear the U.S.D.A. Inspected for Wholesomeness legend.



**UNITED STATES DEPARTMENT OF AGRICULTURE
WASHINGTON, D.C. 20250**

**OFFICIAL BUSINESS
PENALTY FOR PRIVATE USE, \$300**

To stop mailing or to change your
address send this sheet with label
intact, showing new address, to Crop
Reporting Board Publications, SRS, U.S.
Dept of Agriculture, Rm 5829 South
Building, 14th & Independence Ave. S.W.,
Wash., D.C. 20250

**POSTAGE AND FEES PAID
U.S. DEPARTMENT OF
AGRICULTURE
AGR 101
FIRST CLASS**

