



Poultry Slaughter

Released April 5, 2002, by the National Agricultural Statistics Service (NASS), Agricultural Statistics Board, U.S. Department of Agriculture. For information on "Poultry Slaughter" call John Lange at 202-720-0585, office hours 7:00 a.m. to 4:30 p.m. ET.

Ready-to-Cook Weight Up 6 Percent

Poultry certified wholesome during February 2002 (ready-to-cook weight) totaled 2.96 billion pounds, up 6 percent from the amount certified in February 2001. Updated totals for January 2002 show that 3.33 billion pounds were certified.

The preliminary total live weight of poultry inspected during February 2002 was 3.96 billion pounds, up 6 percent from a year ago. Young chickens inspected totaled 3.32 billion pounds, up 6 percent from February 2001, and mature chickens totaled 68.5 million pounds, up 3 percent. Turkey inspections totaled 563 million pounds, up 9 percent, while ducks totaled 12.5 million pounds, a 6 percent decrease.

Young chickens slaughtered during February 2002 averaged 5.09 pounds per bird, up 2 percent from February 2001. The average live weight of mature chickens was 5.12 pounds per bird, down 2 percent from a year ago. Turkeys slaughtered during February 2002 averaged 27.8 pounds per bird, up 3 percent from February 2001.

Ante-mortem condemnations during February 2002 totaled 17.0 million pounds. Condemnations were 0.43 percent of the live weight inspected, compared with 0.41 percent a year earlier. Post-mortem condemnations, at 47.5 million pounds (N.Y. dressed weight), were 1.33 percent of quantities inspected, compared with 1.67 percent a year earlier.

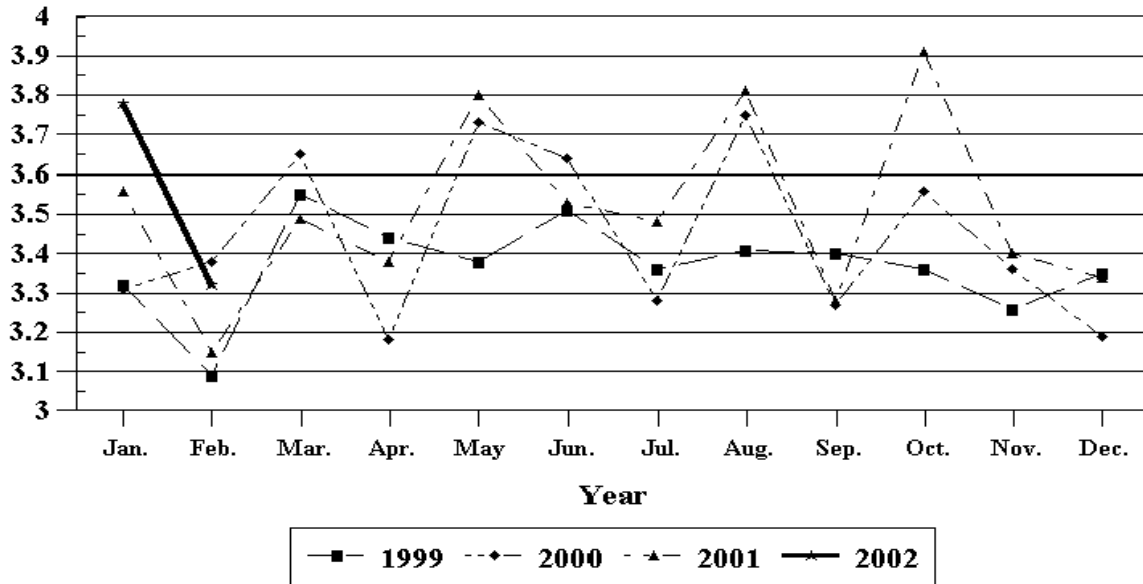
February 2002 contained 20 weekdays (including one holiday) and four Saturdays, the same as February 2001.

Contents

	Page
Poultry Slaughter: Number, Live Weight, and Average Live Weight by Type, United States, February 2002	4
Poultry Slaughter: Chilled and Frozen, Pounds Certified by Type, United States, February 2002	6
Poultry Slaughter: Ante-Mortem Condemnations by Type, United States, February 2002	8
Poultry Slaughter: Post-Mortem Condemnations by Type, United States, February 2002	9
Young Chickens Slaughtered: Number, Live Weight, and Average Live Weight, by State and United States, February 2002	10
Young Chickens Slaughtered: Pounds Certified and Post-Mortem Condemnations, by State and United States, February 2002	11
Young Chickens Slaughtered: Number Condemned Post-Mortem by Cause, by Type, by State and United States, February 2002	12
Young Turkeys (Mature) Slaughtered: Number, Live Weight, and Average Live Weight, by State and United States, February 2002	14
Young Turkeys (Mature) Slaughtered: Pounds Certified and Post-Mortem Condemnations, by State and United States, February 2002	14
Young Turkeys Slaughtered: Number Condemned Post-Mortem by Cause, by Type, by State and United States, February 2002	15
Reliability Statement	16
Definitions	17

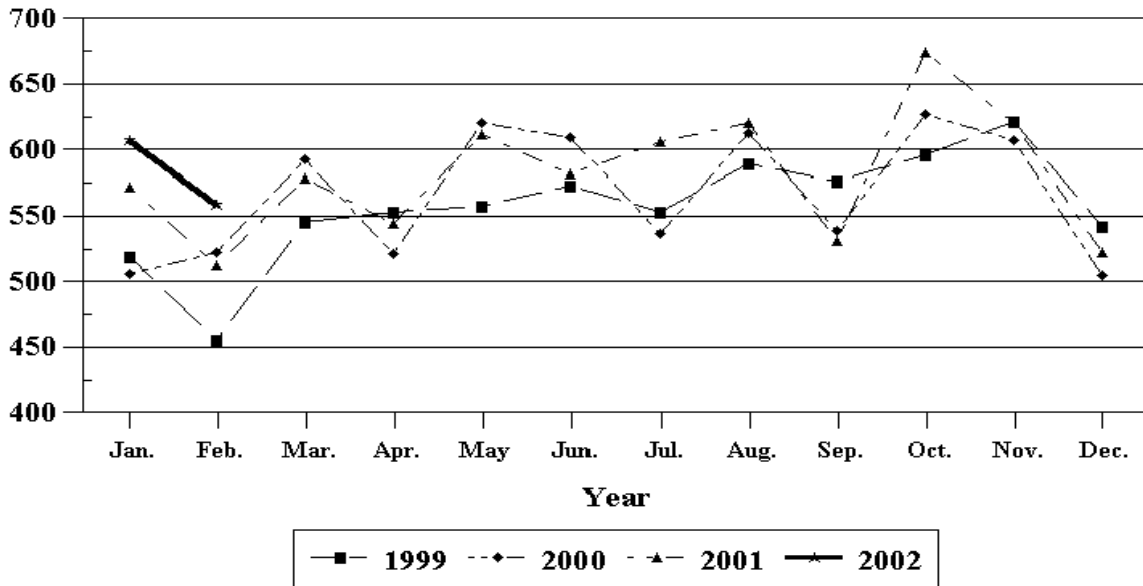
Young Chickens: Live Weight Slaughtered, by Month, 1999-2002

Billion Pounds



Young Turkeys: Live Weight Slaughtered, by Month, 1999-2002

Million Pounds



**Poultry Slaughter: Number, Live Weight, and Average Live Weight by Type,
United States, February 2002¹**

Commodity	Feb 2001	Jan 2002	Feb 2002	Percent of	
				Feb 2001	Jan 2002
	<i>1,000 Head</i>	<i>1,000 Head</i>	<i>1,000 Head</i>	<i>Percent</i>	<i>Percent</i>
Number Slaughtered					
Chickens					
Young	627,380	737,810	652,787	104	88
Mature	12,734	15,778	13,388	105	85
Light	7,485	9,809	8,188	109	83
Heavy	5,249	5,969	5,200	99	87
Total	640,114	753,588	666,175	104	88
Turkeys					
Young	19,108	21,486	20,112	105	94
Old	170	230	153	90	67
Total	19,278	21,716	20,265	105	93
Ducks	2,001	2,064	1,857	93	90
	<i>1,000 pounds</i>	<i>1,000 pounds</i>	<i>1,000 pounds</i>	<i>Percent</i>	<i>Percent</i>
Live Weight					
Chickens					
Young	3,145,972	3,778,125	3,319,831	106	88
Mature	66,369	79,998	68,508	103	86
Light	25,476	33,550	27,684	109	83
Heavy	40,893	46,448	40,824	100	88
Total	3,212,341	3,858,123	3,388,339	105	88
Turkeys					
Young	514,484	606,538	559,051	109	92
Old	4,389	6,523	4,294	98	66
Total	518,873	613,061	563,345	109	92
Ducks	13,252	14,088	12,492	94	89
Other Poultry	826	745	653	79	88
Total Poultry	3,745,292	4,486,017	3,964,829	106	88
	<i>Pounds</i>	<i>Pounds</i>	<i>Pounds</i>	<i>Percent</i>	<i>Percent</i>
Average Live Weight					
Chickens					
Young	5.01	5.12	5.09	102	99
Mature	5.21	5.07	5.12	98	101
Light	3.40	3.42	3.38	99	99
Heavy	7.79	7.78	7.85	101	101
Total	5.02	5.12	5.09	101	99
Turkeys					
Young	26.92	28.23	27.80	103	98
Old	25.80	28.39	28.02	109	99
Total	26.92	28.23	27.80	103	98
Ducks	6.62	6.83	6.73	102	99

See footnote(s) at end of table.

--continued

**Poultry Slaughter: Number, Live Weight, and Average Live Weight by Type,
United States, February 2002 ¹ (continued)**

Commodity	January to Date			Percent of	
	2000	2001	2002	2000	2001
	<i>1,000 Head</i>	<i>1,000 Head</i>	<i>1,000 Head</i>	<i>Percent</i>	<i>Percent</i>
Number Slaughtered					
Chickens					
Young	1,328,779	1,338,063	1,390,597	105	104
Mature	27,350	26,733	29,166	107	109
Light	16,691	15,864	17,997	108	113
Heavy	10,659	10,869	11,169	105	103
Total	1,356,129	1,364,796	1,419,763	105	104
Turkeys					
Young	39,185	40,279	41,598	106	103
Old	269	302	383	142	127
Total	39,454	40,581	41,981	106	103
Ducks	3,976	4,326	3,921	99	91
	<i>1,000 pounds</i>	<i>1,000 pounds</i>	<i>1,000 pounds</i>	<i>Percent</i>	<i>Percent</i>
Live Weight					
Chickens					
Young	6,689,050	6,717,708	7,097,956	106	106
Mature	139,577	138,451	148,506	106	107
Light	56,569	54,566	61,234	108	112
Heavy	83,008	83,885	87,272	105	104
Total	6,828,627	6,856,159	7,246,462	106	106
Turkeys					
Young	1,029,256	1,090,460	1,165,589	113	107
Old	7,082	8,033	10,817	153	135
Total	1,036,338	1,098,493	1,176,406	114	107
Ducks	26,461	28,658	26,580	100	93
Other Poultry	1,943	1,633	1,398	72	86
Total Poultry	7,893,369	7,984,943	8,450,846	107	106
	<i>Pounds</i>	<i>Pounds</i>	<i>Pounds</i>	<i>Percent</i>	<i>Percent</i>
Average Live Weight					
Chickens					
Young	5.03	5.02	5.10	101	102
Mature	5.10	5.18	5.09	100	98
Light	3.39	3.44	3.40	100	99
Heavy	7.79	7.72	7.81	100	101
Total	5.04	5.02	5.10	101	102
Turkeys					
Young	26.27	27.07	28.02	107	104
Old	26.33	26.60	28.25	107	106
Total	26.27	27.07	28.02	107	104
Ducks	6.66	6.63	6.78	102	102

¹ Federally inspected only.

**Poultry Slaughter: Chilled and Frozen, Pounds Certified by Type,
United States, February 2002 ¹**

Commodity	Feb 2001	Jan 2002	Feb 2002	Percent of	
				Feb 2001	Jan 2002
	<i>1,000 Pounds</i>	<i>1,000 Pounds</i>	<i>1,000 Pounds</i>	<i>Percent</i>	<i>Percent</i>
Chilled					
Chickens					
Young	2,117,267	2,533,948	2,238,759	106	88
Mature	38,889	46,508	39,795	102	86
Light	12,363	16,462	13,245	107	80
Heavy	26,526	30,046	26,550	100	88
Total	2,156,156	2,580,456	2,278,554	106	88
Turkeys					
Young	200,465	236,084	213,769	107	91
Old	2,784	4,243	2,563	92	60
Total	203,249	240,327	216,332	106	90
Ducks	3,628	4,154	3,515	97	85
Other Poultry	149	189	179	120	95
Total Poultry	2,363,182	2,825,126	2,498,580	106	88
Frozen					
Chickens					
Young	204,899	252,581	222,896	109	88
Mature	795	1,451	993	125	68
Light	682	1,111	874	128	79
Heavy	113	340	119	105	35
Total	205,694	254,032	223,889	109	88
Turkeys					
Young	205,458	243,039	228,368	111	94
Old	587	594	758	129	128
Total	206,045	243,633	229,126	111	94
Ducks	5,925	6,558	5,961	101	91
Other Poultry	278	261	237	85	91
Total Poultry	417,942	504,484	459,213	110	91
Total Chilled and Frozen					
Chickens					
Young	2,322,166	2,786,529	2,461,655	106	88
Mature	39,684	47,959	40,788	103	85
Light	13,045	17,573	14,119	108	80
Heavy	26,639	30,386	26,669	100	88
Total	2,361,850	2,834,488	2,502,443	106	88
Turkeys					
Young	405,923	479,123	442,137	109	92
Old	3,371	4,837	3,321	99	69
Total	409,294	483,960	445,458	109	92
Ducks	9,553	10,712	9,476	99	88
Other Poultry	427	450	416	97	92
Total Poultry	2,781,124	3,329,610	2,957,793	106	89

See footnote(s) at end of table.

--continued

**Poultry Slaughter: Chilled and Frozen, Pounds Certified by Type,
United States, February 2002 ¹ (continued)**

Commodity	January to Date			Percent of	
	2000	2001	2002	2000	2001
	<i>1,000 Pounds</i>	<i>1,000 Pounds</i>	<i>1,000 Pounds</i>	<i>Percent</i>	<i>Percent</i>
Chilled					
Chickens					
Young	4,488,795	4,520,333	4,772,707	106	106
Mature	78,050	80,625	86,303	111	107
Light	25,644	26,350	29,707	116	113
Heavy	52,406	54,275	56,596	108	104
Total	4,566,845	4,600,958	4,859,010	106	106
Turkeys					
Young	396,031	425,878	449,853	114	106
Old	4,233	5,337	6,806	161	128
Total	400,264	431,215	456,659	114	106
Ducks	7,404	7,857	7,669	104	98
Other Poultry	596	358	368	62	103
Total Poultry	4,975,109	5,040,388	5,323,706	107	106
Frozen					
Chickens					
Young	426,697	424,039	475,477	111	112
Mature	6,029	1,734	2,444	41	141
Light	3,463	1,396	1,985	57	142
Heavy	2,566	338	459	18	136
Total	432,726	425,773	477,921	110	112
Turkeys					
Young	413,441	438,361	471,407	114	108
Old	1,033	905	1,352	131	149
Total	414,474	439,266	472,759	114	108
Ducks	11,446	12,677	12,519	109	99
Other Poultry	587	574	498	85	87
Total Poultry	859,233	878,290	963,697	112	110
Total Chilled and Frozen					
Chickens					
Young	4,915,492	4,944,372	5,248,184	107	106
Mature	84,079	82,359	88,747	106	108
Light	29,107	27,746	31,692	109	114
Heavy	54,972	54,613	57,055	104	104
Total	4,999,571	5,026,731	5,336,931	107	106
Turkeys					
Young	809,472	864,239	921,260	114	107
Old	5,266	6,242	8,158	155	131
Total	814,738	870,481	929,418	114	107
Ducks	18,850	20,534	20,188	107	98
Other Poultry	1,183	932	866	73	93
Total Poultry	5,834,342	5,918,678	6,287,403	108	106

¹ Ready-to-cook weights.

**Poultry Slaughter: Ante-Mortem Condemnations by Type,
United States, February 2002 ¹**

Commodity	Feb 2001	Jan 2002	Feb 2002	Percent of		January to Date		Percent of 2001
				Feb 2001	Jan 2002	2001	2002	
	<i>1,000 Pounds</i>	<i>1,000 Pounds</i>	<i>1,000 Pounds</i>	<i>Percent</i>	<i>Percent</i>	<i>1,000 Pounds</i>	<i>1,000 Pounds</i>	<i>Percent</i>
Live Weight								
Chickens								
Young	12,522	15,889	14,240	114	90	29,110	30,129	104
Mature	1,139	1,295	1,101	97	85	2,375	2,396	101
Light	547	639	467	85	73	1,152	1,106	96
Heavy	592	656	634	107	97	1,223	1,290	105
Total	13,661	17,184	15,341	112	89	31,485	32,525	103
Turkeys								
Young	1,740	2,016	1,565	90	78	3,784	3,581	95
Old	46	72	35	76	49	108	107	99
Total	1,786	2,088	1,600	90	77	3,892	3,688	95
Ducks	19	69	19	100	28	42	88	210
Other Poultry	1	1	2	200	200	7	3	43
Total Poultry	15,467	19,342	16,962	110	88	35,426	36,304	102
	<i>Percent</i>	<i>Percent</i>	<i>Percent</i>	<i>Percent</i>	<i>Percent</i>	<i>Percent</i>	<i>Percent</i>	<i>Percent</i>
Percent of Total Weight Condemned ²								
Chickens								
Young	0.40	0.42	0.43	108	102	0.43	0.42	98
Mature	1.72	1.62	1.61	94	99	1.71	1.61	94
Light	2.15	1.91	1.69	79	88	2.11	1.81	86
Heavy	1.45	1.41	1.55	107	110	1.46	1.48	101
Total	0.43	0.45	0.45	105	100	0.46	0.45	98
Turkeys								
Young	0.34	0.33	0.28	82	85	0.35	0.31	89
Old	1.05	1.11	0.81	77	73	1.34	0.99	74
Total	0.34	0.34	0.28	82	82	0.35	0.31	89
Ducks	0.14	0.49	0.15	107	31	0.15	0.33	220
Other Poultry	0.17	0.12	0.29	171	242	0.44	0.20	45
Total Poultry	0.41	0.43	0.43	105	100	0.44	0.43	98

¹ Federally inspected only.

² Pounds condemned as a percent of live weight pounds inspected.

**Poultry Slaughter: Post-Mortem Condemnations by Type,
United States, February 2002 ¹**

Commodity	Feb 2001	Jan 2002	Feb 2002	Percent of		January to Date		Percent of 2001
				Feb 2001	Jan 2002	2001	2002	
				<i>1,000 Pounds</i>	<i>1,000 Pounds</i>			
N.Y. Dressed Weight				<i>Percent</i>	<i>Percent</i>			<i>Percent</i>
Chickens								
Young	40,014	37,371	32,989	82	88	86,933	70,360	81
Mature	3,551	4,294	3,558	100	83	7,301	7,852	108
Light	1,865	2,452	2,073	111	85	4,111	4,525	110
Heavy	1,686	1,842	1,485	88	81	3,190	3,327	104
Total	43,565	41,665	36,547	84	88	94,234	78,212	83
Turkeys								
Young	12,146	11,403	10,412	86	91	24,718	21,815	88
Old	279	446	284	102	64	520	730	140
Total	12,425	11,849	10,696	86	90	25,238	22,545	89
Ducks	312	262	230	74	88	702	492	70
Other Poultry	8	8	8	100	100	16	16	100
Total Poultry	56,310	53,784	47,481	84	88	120,190	101,265	84
	<i>Percent</i>	<i>Percent</i>	<i>Percent</i>	<i>Percent</i>	<i>Percent</i>	<i>Percent</i>	<i>Percent</i>	<i>Percent</i>
Percent of Total Weight Condemned ²								
Chickens								
Young	1.41	1.10	1.10	78	100	1.44	1.10	76
Mature	5.95	5.96	5.77	97	97	5.86	5.88	100
Light	8.13	8.12	8.32	102	102	8.37	8.21	98
Heavy	4.58	4.41	4.04	88	92	4.22	4.24	100
Total	1.51	1.20	1.20	79	100	1.53	1.20	78
Turkeys								
Young	2.62	2.09	2.07	79	99	2.52	2.08	83
Old	7.07	7.60	7.35	104	97	7.19	7.50	104
Total	2.66	2.15	2.11	79	98	2.55	2.13	84
Ducks	2.61	2.07	2.05	79	99	2.72	2.06	76
Other Poultry	0.98	1.21	1.50	153	124	1.06	1.34	126
Total Poultry	1.67	1.33	1.33	80	100	1.67	1.33	80

¹ Federally inspected only.

² Pounds condemned as a percent of N.Y. dressed weight of quantity inspected.

**Young Chickens Slaughtered: Number, Live Weight, and Average Live Weight,
by State and United States, February 2002**

State	Number Slaughtered		Live Weight		Average Live Weight	
	2001	2002	2001	2002	2001	2002
	<i>1,000 Head</i>	<i>1,000 Head</i>	<i>1,000 Pounds</i>	<i>1,000 Pounds</i>	<i>Pounds</i>	<i>Pounds</i>
AL	72,598	76,504	364,535	388,069	5.02	5.07
AR	88,464	91,362	431,990	450,807	4.88	4.93
CA	*	*	*	*	*	*
DE	18,980	20,092	109,553	120,880	5.77	6.02
FL	8,954	9,789	48,239	54,945	5.39	5.61
GA	89,693	94,077	442,868	468,174	4.94	4.98
KY	18,208	17,893	90,891	92,161	4.99	5.15
LA	12,688	13,618	58,731	69,603	4.63	5.11
MD	14,439	14,893	68,946	71,221	4.78	4.78
MS	53,352	57,775	259,531	294,732	4.86	5.10
MO	27,202	28,969	123,538	138,865	4.54	4.79
NJ	*	*	*	*	*	*
NY	*	*	*	*	*	*
NC	52,350	53,026	307,409	315,257	5.87	5.95
OH	2,531	2,864	12,661	16,242	5.00	5.67
PA	8,547	8,444	44,248	44,535	5.18	5.27
SC	16,862	18,838	89,725	104,834	5.32	5.57
TN	18,211	18,683	84,618	87,172	4.65	4.67
TX	44,506	47,114	217,453	230,468	4.89	4.89
VA	25,791	27,163	125,236	124,161	4.86	4.57
WA	*	4,379	*	23,612	*	5.39
Oth Sts	54,004	47,304	265,800	224,093	4.92	4.74
US	627,380	652,787	3,145,972	3,319,831	5.01	5.09

* Included in "Other States" to avoid disclosing individual operations.

**Young Chickens Slaughtered: Pounds Certified and Post-Mortem Condemnations
by State and United States, February 2002**

State	Total Chilled and Frozen Pounds Certified ¹		Post-Mortem Condemnations			
			N.Y. Dressed Weight		Percent ²	
	2001	2002	2001	2002	2001	2002
	<i>1,000 Pounds</i>	<i>1,000 Pounds</i>	<i>1,000 Pounds</i>	<i>1,000 Pounds</i>	<i>Percent</i>	<i>Percent</i>
AL	268,768	287,423	4,975	3,824	1.52	1.09
AR	310,005	325,070	5,959	5,547	1.53	1.37
CA	*	*	*	*	*	*
DE	79,677	86,973	2,207	2,112	2.24	1.94
FL	34,599	38,632	794	599	1.83	1.21
GA	328,041	330,378	4,968	3,808	1.25	0.90
KY	67,958	69,550	432	642	0.53	0.77
LA	41,505	46,832	498	418	0.94	0.67
MD	48,923	50,974	1,042	898	1.68	1.40
MS	199,615	224,598	2,368	1,954	1.01	0.74
MO	90,098	100,868	1,656	1,425	1.49	1.14
NJ	*	*	*	*	*	*
NY	*	*	*	*	*	*
NC	227,078	250,373	4,447	3,953	1.61	1.39
OH	9,047	11,750	207	273	1.81	1.87
PA	31,296	30,820	1,022	1,088	2.57	2.71
SC	65,904	76,420	1,196	880	1.48	0.93
TN	60,268	62,568	785	649	1.03	0.83
TX	167,626	190,970	2,529	1,842	1.29	0.89
VA	90,799	93,125	1,518	1,204	1.35	1.08
WA	*	17,632	*	329	*	1.55
Oth Sts	200,959	166,699	3,411	1,544	1.43	0.77
US	2,322,166	2,461,655	40,014	32,989	1.41	1.10

* Included in "Other States" to avoid disclosing individual operations.

¹ Ready-to-cook weights.

² Pounds condemned as percent of equivalent N.Y. dressed weight of quantity inspected.

**Chickens Slaughtered: Number Condemned Post-Mortem by Cause, by Type,
by State and United States, February 2002**

State	Tuber- culosis	Leukosis	Septicemia	Airsac- culitis	Synovitis	Tumors
	<i>Number of Head</i>	<i>Number of Head</i>	<i>Number of Head</i>	<i>Number of Head</i>	<i>Number of Head</i>	<i>Number of Head</i>
Young Birds						
AL		776	111,290	67,226	1,438	6,718
AR		4,186	255,527	132,645	6,018	2,308
CA		*	86,576	2,357	226	968
DE		2,508	98,916	54,960	*	*
FL		*	*	*	*	*
GA		731	94,250	112,758	414	5,616
IN		*	*	*	*	*
KY		*	25,835	*	*	*
LA		*	18,394	10,550	*	710
MD		3,298	52,383	31,606	66	*
MS		372	64,706	39,882	430	1,375
MO		*	82,360	*	1,671	*
NJ		*	*	*	*	*
NY	*	*	*	*	263	*
NC		2,120	103,076	58,833	85	15,977
OH		*	16,581	1,895	*	*
PA		477	30,504	24,031	239	*
SC		77	21,638	28,885	*	1,370
TN		518	36,397	13,109	425	577
TX		*	107,123	72,179	*	1,626
VA		*	54,776	42,376	22	*
WA		86	17,513	2,415	121	*
Oth Sts	1	49,265	65,336	87,809	2,498	25,011
US	1	64,414	1,343,181	783,516	13,916	62,256
Mature Birds						
Light		1,960	240,568	9,954	105	98,233
Heavy		1,060	66,260	2,575	262	7,989
US		3,020	306,828	12,529	367	106,222

See footnote(s) at end of table.

--continued

**Chickens Slaughtered: Number Condemned Post-Mortem by Cause, by Type,
by State and United States, February 2002 (continued)**

	Bruises	Cadaver	Contam-ination	Overscald	Other	Total ¹
	<i>Number of Head</i>	<i>Number of Head</i>	<i>Number of Head</i>	<i>Number of Head</i>	<i>Number of Head</i>	<i>Number of Head</i>
Young Birds						
AL	5,120	22,907	24,861	7,972	99,247	347,555
AR	6,518	35,124	30,460	2,630	62,642	538,058
CA	327	*	948	233	*	108,767
DE	2,121	9,122	8,572	5,998	30,202	218,374
FL	*	4,023	*	*	8,373	54,143
GA	5,600	36,440	19,637	4,913	156,525	436,884
IN	*	*	*	*	*	*
KY	274	10,196	4,075	*	7,242	68,447
LA	587	5,381	4,706	*	2,430	43,336
MD	1,970	12,983	*	267	21,629	160,046
MS	2,061	13,160	9,324	198	51,076	182,584
MO	1,385	12,178	9,581	1,031	26,714	190,149
NJ	*	*	*	*	*	*
NY	677	169	4,272	*	*	13,456
NC	3,977	28,357	19,873	10,520	58,606	301,424
OH	250	1,326	*	*	*	29,462
PA	1,511	5,043	5,159	*	41,411	109,490
SC	*	7,122	2,546	2,755	8,479	74,530
TN	1,577	8,610	4,940	1,063	19,081	86,297
TX	1,228	7,419	13,742	758	15,884	256,523
VA	1,378	8,399	*	1,044	20,479	147,419
WA	*	*	556	*	*	*
Oth Sts	4,468	8,760	67,673	2,504	47,806	128,725
US	41,029	236,719	230,925	41,886	677,826	3,495,669
Mature Birds						
Light	21,256	16,944	161,463	862	40,354	591,699
Heavy	1,552	15,289	14,667	931	36,223	146,808
US	22,808	32,233	176,130	1,793	76,577	738,507

* Included in "Other States" to avoid disclosing individual operations.

¹ The sum of the individual diseases does not add across to the total for "Other States".

Young Turkeys (Mature) Slaughtered: Number, Live Weight, and Average Live Weight, by State and United States, February 2002

State	Number Slaughtered		Live Weight		Average Live Weight	
	2001	2002	2001	2002	2001	2002
	<i>1,000 Head</i>	<i>1,000 Head</i>	<i>1,000 Pounds</i>	<i>1,000 Pounds</i>	<i>Pounds</i>	<i>Pounds</i>
AR	2,050	2,635	36,932	47,205	18.02	17.91
CA	*	*	*	*	*	*
IA	1,317	1,309	41,778	41,931	31.72	32.04
MN	2,667	2,394	68,344	69,018	25.63	28.84
MO	1,733	1,658	47,987	48,346	27.69	29.16
NC	2,545	2,841	67,603	79,739	26.56	28.07
OH	*	*	*	*	*	*
PA	*	*	*	*	*	*
VA	2,819	3,077	62,030	70,752	22.00	22.99
Oth Sts	5,977	6,198	189,810	202,060	31.76	32.60
US	19,108	20,112	514,484	559,051	26.92	27.80

* Included in "Other States" to avoid disclosing individual operations.

Young Turkeys (Mature) Slaughtered: Pounds Certified and Post-Mortem Condemnations, by State and United States, February 2002

State	Total Chilled and Frozen Pounds Certified ¹		Post-Mortem Condemnations			
			N.Y. Dressed Weight		Percent ²	
	2001	2002	2001	2002	2001	2002
	<i>1,000 Pounds</i>	<i>1,000 Pounds</i>	<i>1,000 Pounds</i>	<i>1,000 Pounds</i>	<i>Percent</i>	<i>Percent</i>
AR	30,265	39,603	711	706	2.14	1.66
CA	*	*	*	*	*	*
IA	32,339	32,412	1,379	1,231	3.67	3.26
MN	53,869	54,947	2,042	1,636	3.32	2.63
MO	37,468	37,775	1,580	979	3.66	2.25
NC	53,342	62,537	1,098	1,581	1.80	2.20
OH	*	*	*	*	*	*
PA	*	*	*	*	*	*
VA	48,006	53,965	821	896	1.47	1.41
Oth Sts	150,634	160,898	4,515	3,383	2.64	1.86
US	405,923	442,137	12,146	10,412	2.62	2.07

* Included in "Other States" to avoid disclosing individual operations.

¹ Ready-to-cook weights.

² Pounds condemned as percent of equivalent N.Y. dressed weight of quantity inspected.

**Turkeys Slaughtered: Number Condemned Post-Mortem by Cause, by Type,
by State and United States, February 2002**

State	Tuber- culosis	Leukosis	Septicemia	Airsac- culitis	Synovitis	Tumors
	<i>Number of Head</i>	<i>Number of Head</i>	<i>Number of Head</i>	<i>Number of Head</i>	<i>Number of Head</i>	<i>Number of Head</i>
Young (Mature)						
AR			7,255	*	*	*
CA		*	*	*	*	*
IA		*	6,462	3,979	*	*
MN		*	16,614	2,970	*	*
MO		*	11,873	*	*	*
NC		*	*	*	*	*
OH		*	*	*	*	*
PA		*	*	*	*	*
VA		*	3,248	235	*	*
Other States		113	34,603	9,063	5,422	135
US		113	80,055	16,247	5,422	135
Old (Breeders)						
US		272	2,525	702	98	151
	Bruises	Cadaver	Contam- ination	Overscald	Other	Total ¹
	<i>Number of Head</i>	<i>Number of Head</i>	<i>Number of Head</i>	<i>Number of Head</i>	<i>Number of Head</i>	<i>Number of Head</i>
Young (Mature)						
AR	*	696	*	30	*	10,971
CA	*	*	90	*	202	4,858
IA	42	*	554	*	*	14,866
MN	155	385	535	*	1,169	23,453
MO	48	347	531	*	*	15,402
NC	*	1,705	*	48	*	15,282
OH	*	*	*	*	*	*
PA	*	*	*	*	*	*
VA	32	*	*	*	*	8,005
Other States	508	5,007	8,765	2,836	11,935	44,755
US	785	8,140	10,475	2,914	13,306	137,592
Old (Breeders)						
US	16	232	158	58	972	5,184

* Included in "Other States" to avoid disclosing individual operations.

¹ The sum of the individual diseases does not add across to the total for "Other States".

Poultry Slaughter Estimates

Data Sources: Primary data for poultry slaughter estimates are obtained from the Poultry Inspection Form (FSIS 6000-21). This form is completed by inspectors of the Food Safety and Inspection Service (FSIS), USDA for all Federally Inspected (FI) plants. Over 99 percent of the total U.S. slaughter for any species is under FI. The FSIS 6000-21 forms collect number of head slaughtered daily under FI by species and class as well as condemnations and total live and dressed weights. Approximately 350 plants in the U.S. are operated under Federal Inspection.

Revision Policy: Revisions are generally the result of late reports received by FSIS from plants and are usually less than one-half of 1 percent of the preliminary totals. Revisions for the previous month and year-to-date totals are published in each monthly release. Final data are published in the annual summary released in April and reflect any late reports or corrections which occurred after the monthly revision were published.

Procedures and Reliability: Plant inspectors submit forms (FSIS 6000-21) weekly summarizing the plant's activity. When inconsistencies in the data are detected, the reports are returned to the inspectors for correction. Inspectors correct or validate the report and resubmit it. The reports cover weekly activities through Saturday night and reported data are allocated to the appropriate month as it enters the database.

A NASS computer program provides a review of current data with historical data for each plant. An edit provides checks for the detection of errors such as invalid plant information, duplication, and erroneous data. Data are summarized weekly and accumulated to monthly totals for this release.

Data for major slaughter plants with missing reports are adjusted prior to publication to assure that all plants slaughtering a significant portion of a specific class are accounted for each week. Estimates for missing weeks are made only after verifying that the plant was in operation. Adjustments are based on either the previous week's information or a week determined to be similar to the one missing. Late reports replace imputed data as they become available. While there is a varying degree of incompleteness from month to month, it has only a minimal impact on the published totals.

Poultry slaughter estimates are based on a census of operating plants and, therefore, have no sampling error. However, they may be subject to errors such as omissions, duplications, and mistakes in reporting, recording, and processing the data. These errors are minimized through strict quality controls in the edit and summarization process, and a careful review of all reported data for consistency and reasonableness.

State data are published for selected states for young chickens and young turkeys. State data are not published if less than three plants operate for a species in a State, or if one plant has 60 percent or more of the total live weight for that species. Data for all states not published are included in the "Other States" category. Also included in this category are data for published states that are confidential (denoted by an *). Data for all states are included in the U.S. totals. For 2001, young chickens were killed in 31 states, young turkeys in 21 states.

Definitions

Ante-Mortem Condemnations - Birds condemned prior to their entry into the slaughter plant.

Certified Ready-to-Cook - The weight of poultry certified wholesome by inspection after post-mortem condemnation pounds are removed. Ready-to-cook represents poultry meat ready for the marketing channel.

Ducks - Includes all ducks regardless of age and weight.

Fryer-Roaster Turkeys - Young immature birds, usually under 16 weeks of age. Included with young turkeys.

Mature Chickens - Fowl from breeder and market egg flocks and stags and cocks.

New York Dressed Weight - Carcass weight after only feathers and blood are removed. This weight is approximately 90% of live weight.

Old Turkeys (Breeders) - Fully matured birds held for egg production, usually over 15 months of age.

Other Poultry - Includes all other ready-to-cook products which bear the USDA Inspected for Wholesomeness legend.

Post-Mortem Condemnations - Carcasses or parts condemned by the inspector because of disease or mishandling and removed from the slaughter line and destroyed.

Young Chickens - Commercially grown broilers-fryers and other young immature birds such as roasters and capons.

Young Turkeys (Mature) - Young birds grown to a matured market age, about 5 months.

The next "Poultry Slaughter" report will be released at 3 p.m. ET on May 3, 2002.

The United States Department of Agriculture (USDA) prohibits discrimination in all its programs on the basis of race, color, national origin, gender, religion, age, disability, political beliefs, sexual orientation, and marital or family status. (Not all prohibited bases apply to all programs.) Persons with disabilities who require alternative means for communication of program information (braille, large print, audiotape, etc.) should contact the USDA's TARGET Center at 202-720-2600 (voice and TDD).

To file a complaint of discrimination, write USDA, Director, Office of Civil Rights, Room 326-W, Whitten Building, 1400 Independence Avenue, SW, Washington, D.C., 20250-9410, or call 202-720-5964 (voice or TDD). USDA is an equal opportunity provider and employer.

ACCESS TO REPORTS!!

For your convenience, there are several ways to obtain NASS reports, data products, and services:

INTERNET ACCESS

All NASS reports are available free of charge on the worldwide Internet. For access, connect to the Internet and go to the NASS Home Page at: <http://www.usda.gov/nass/>. Select "Today's Reports" or Publications and then Reports by Calendar or Publications and then Search, by Title or Subject.

E-MAIL SUBSCRIPTION

There are two options for subscribing via e-mail. All NASS reports are available by subscription free of charge direct to your e-mail address. 1) Starting with the NASS Home Page at <http://www.usda.gov/nass/>, click on **Publications**, then click on the **Subscribe by E-mail** button which takes you to the page describing e-mail delivery of reports. Finally, click on **Go to the Subscription Page** and follow the instructions. 2) If you do NOT have Internet access, send an e-mail message to: usda-reports@usda.mannlib.cornell.edu. In the body of the message type the word: **list**.

AUTOFAX ACCESS

NASSFax service is available for some reports from your fax machine. Please call 202-720-2000, using the handset attached to your fax. Respond to the voice prompts. Document 0411 is a list of available reports.

PRINTED REPORTS OR DATA PRODUCTS

CALL OUR TOLL-FREE ORDER DESK: 800-999-6779 (U.S. and Canada)
Other areas, please call 703-605-6220 FAX: 703-605-6900
(Visa, MasterCard, check, or money order acceptable for payment.)

ASSISTANCE

For **assistance** with general agricultural statistics or further information about NASS or its products or services, contact the **Agricultural Statistics Hotline** at **800-727-9540**, 7:30 a.m. to 4:00 p.m. ET, or e-mail: nass@nass.usda.gov.
