



Poultry Slaughter

Released May 3, 2002, by the National Agricultural Statistics Service (NASS), Agricultural Statistics Board, U.S. Department of Agriculture. For information on "Poultry Slaughter" call John Lange at 202-720-0585, office hours 7:00 a.m. to 4:30 p.m. ET.

Ready-to-Cook Weight Down 1 Percent

Poultry certified wholesome during March 2002 (ready-to-cook weight) totaled 3.09 billion pounds, down 1 percent from the amount certified in March 2001. Updated totals for February 2002 show that 2.97 billion pounds were certified.

The preliminary total live weight of poultry inspected during March 2002 was 4.16 billion pounds, down 1 percent from a year ago. Young chickens inspected totaled 3.51 billion pounds, down slightly from March 2001, and mature chickens totaled 71.5 million pounds, down 3 percent. Turkey inspections totaled 569 million pounds, down 3 percent, while ducks totaled 13.0 million pounds, a 7 percent decrease.

Young chickens slaughtered during March 2002 averaged 5.12 pounds per bird, up 2 percent from March 2001. The average live weight of mature chickens was 5.16 pounds per bird, up slightly from a year ago. Turkeys slaughtered during March 2002 averaged 27.2 pounds per bird, up 1 percent from March 2001.

Ante-mortem condemnations during March 2002 totaled 18.9 million pounds. Condemnations were 0.45 percent of the live weight inspected, compared with 0.42 percent a year earlier. Post-mortem condemnations, at 49.6 million pounds (N.Y. dressed weight), were 1.32 percent of quantities inspected, compared with 1.70 percent a year earlier.

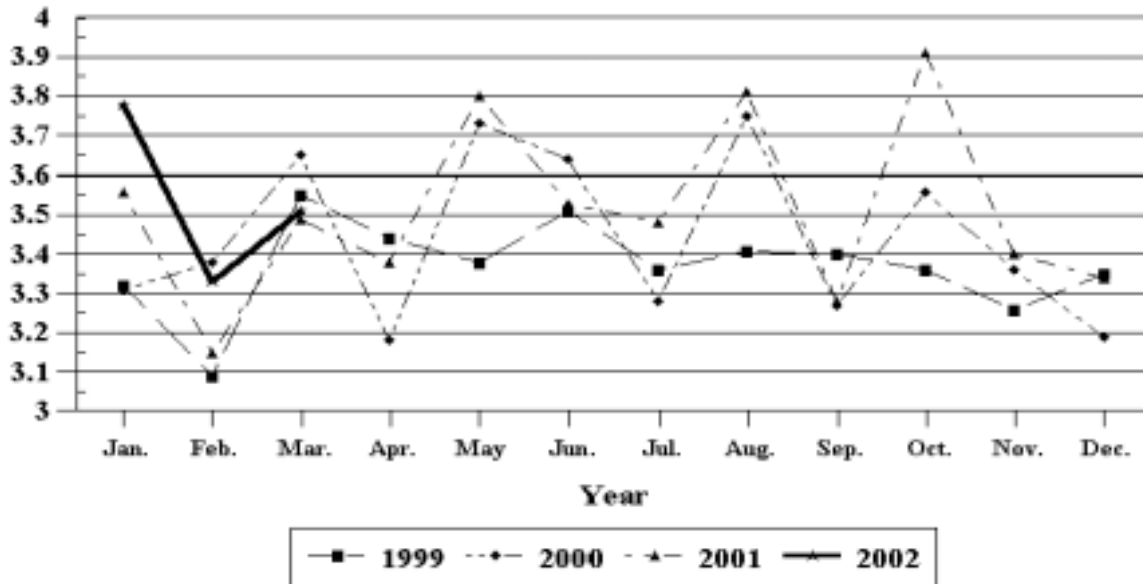
March 2002 contained 21 weekdays and five Saturdays.
March 2001 contained 22 weekdays and five Saturdays.

Contents

	Page
Poultry Slaughter: Number, Live Weight, and Average Live Weight by Type, United States, March 2002	4
Poultry Slaughter: Chilled and Frozen, Pounds Certified by Type, United States, March 2002	6
Poultry Slaughter: Ante-Mortem Condemnations by Type, United States, March 2002	8
Poultry Slaughter: Post-Mortem Condemnations by Type, United States, March 2002	9
Young Chickens Slaughtered: Number, Live Weight, and Average Live Weight, by State and United States, March 2002	10
Young Chickens Slaughtered: Pounds Certified and Post-Mortem Condemnations, by State and United States, March 2002	11
Young Chickens Slaughtered: Number Condemned Post-Mortem by Cause, by Type, by State and United States, March 2002	12
Young Turkeys (Mature) Slaughtered: Number, Live Weight, and Average Live Weight, by State and United States, March 2002	14
Young Turkeys (Mature) Slaughtered: Pounds Certified and Post-Mortem Condemnations, by State and United States, March 2002	14
Young Turkeys Slaughtered: Number Condemned Post-Mortem by Cause, by Type, by State and United States, March 2002	15
Reliability Statement	16
Definitions	17

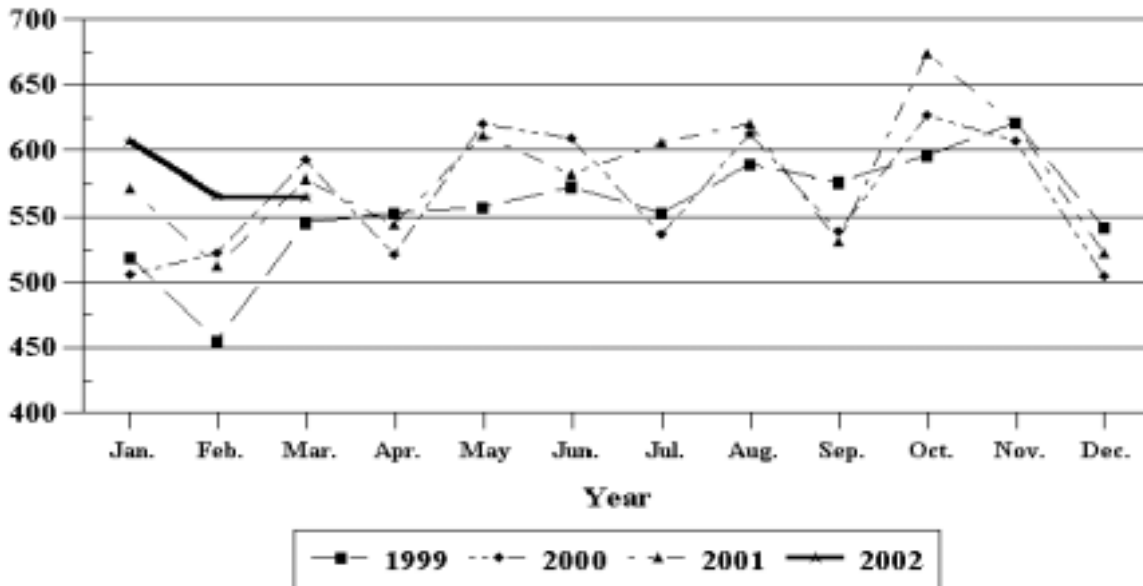
Young Chickens: Live Weight Slaughtered, by Month, 1999-2002

Billion Pounds



Young Turkeys: Live Weight Slaughtered, by Month, 1999-2002

Million Pounds



**Poultry Slaughter: Number, Live Weight, and Average Live Weight by Type,
United States, March 2002¹**

Commodity	Mar 2001	Feb 2002	Mar 2002	Percent of	
				Mar 2001	Feb 2002
	<i>1,000 Head</i>	<i>1,000 Head</i>	<i>1,000 Head</i>	<i>Percent</i>	<i>Percent</i>
Number Slaughtered					
Chickens					
Young	700,816	653,992	685,473	98	105
Mature	14,302	13,392	13,854	97	103
Light	8,679	8,188	8,378	97	102
Heavy	5,623	5,204	5,476	97	105
Total	715,118	667,384	699,327	98	105
Turkeys					
Young	21,638	20,547	20,772	96	101
Old	152	158	138	91	87
Total	21,790	20,705	20,910	96	101
Ducks	2,130	1,857	1,923	90	104
	<i>1,000 pounds</i>	<i>1,000 pounds</i>	<i>1,000 pounds</i>	<i>Percent</i>	<i>Percent</i>
Live Weight					
Chickens					
Young	3,515,792	3,325,731	3,509,044	100	106
Mature	73,629	68,559	71,498	97	104
Light	29,377	27,687	28,463	97	103
Heavy	44,252	40,872	43,035	97	105
Total	3,589,421	3,394,290	3,580,542	100	105
Turkeys					
Young	580,622	566,284	565,198	97	100
Old	4,259	4,411	3,867	91	88
Total	584,881	570,695	569,065	97	100
Ducks	14,015	12,492	13,027	93	104
Other Poultry	887	653	636	72	97
Total Poultry	4,189,204	3,978,130	4,163,270	99	105
	<i>Pounds</i>	<i>Pounds</i>	<i>Pounds</i>	<i>Percent</i>	<i>Percent</i>
Average Live Weight					
Chickens					
Young	5.02	5.09	5.12	102	101
Mature	5.15	5.12	5.16	100	101
Light	3.38	3.38	3.40	101	101
Heavy	7.87	7.85	7.86	100	100
Total	5.02	5.09	5.12	102	101
Turkeys					
Young	26.83	27.56	27.21	101	99
Old	28.01	28.00	27.94	100	100
Total	26.84	27.56	27.22	101	99
Ducks	6.58	6.73	6.78	103	101

See footnote(s) at end of table.

--continued

**Poultry Slaughter: Number, Live Weight, and Average Live Weight by Type,
United States, March 2002 ¹ (continued)**

Commodity	January to Date			Percent of	
	2000	2001	2002	2000	2001
	<i>1,000 Head</i>	<i>1,000 Head</i>	<i>1,000 Head</i>	<i>Percent</i>	<i>Percent</i>
Number Slaughtered					
Chickens					
Young	2,059,336	2,038,879	2,077,275	101	102
Mature	43,060	41,035	43,024	100	105
Light	26,063	24,543	26,375	101	107
Heavy	16,997	16,492	16,649	98	101
Total	2,102,396	2,079,914	2,120,299	101	102
Turkeys					
Young	61,646	61,917	62,805	102	101
Old	441	454	526	119	116
Total	62,087	62,371	63,331	102	102
Ducks	6,033	6,456	5,844	97	91
	<i>1,000 pounds</i>	<i>1,000 pounds</i>	<i>1,000 pounds</i>	<i>Percent</i>	<i>Percent</i>
Live Weight					
Chickens					
Young	10,335,474	10,233,500	10,612,900	103	104
Mature	221,327	212,080	220,055	99	104
Light	89,031	83,943	89,700	101	107
Heavy	132,296	128,137	130,355	99	102
Total	10,556,801	10,445,580	10,832,955	103	104
Turkeys					
Young	1,622,306	1,671,082	1,738,020	107	104
Old	11,735	12,292	14,801	126	120
Total	1,634,041	1,683,374	1,752,821	107	104
Ducks	40,241	42,673	39,607	98	93
Other Poultry	3,032	2,520	2,034	67	81
Total Poultry	12,234,115	12,174,147	12,627,417	103	104
	<i>Pounds</i>	<i>Pounds</i>	<i>Pounds</i>	<i>Percent</i>	<i>Percent</i>
Average Live Weight					
Chickens					
Young	5.02	5.02	5.11	102	102
Mature	5.14	5.17	5.11	99	99
Light	3.42	3.42	3.40	99	99
Heavy	7.78	7.77	7.83	101	101
Total	5.02	5.02	5.11	102	102
Turkeys					
Young	26.32	26.99	27.67	105	103
Old	26.61	27.07	28.15	106	104
Total	26.32	26.99	27.67	105	103
Ducks	6.67	6.61	6.78	102	103

¹ Federally inspected only.

**Poultry Slaughter: Chilled and Frozen, Pounds Certified by Type,
United States, March 2002 ¹**

Commodity	Mar 2001	Feb 2002	Mar 2002	Percent of	
				Mar 2001	Feb 2002
	<i>1,000 Pounds</i>	<i>1,000 Pounds</i>	<i>1,000 Pounds</i>	<i>Percent</i>	<i>Percent</i>
Chilled					
Chickens					
Young	2,359,358	2,242,990	2,357,862	100	105
Mature	43,729	39,794	41,303	94	104
Light	14,638	13,246	13,263	91	100
Heavy	29,091	26,548	28,040	96	106
Total	2,403,087	2,282,784	2,399,165	100	105
Turkeys					
Young	232,131	218,702	224,877	97	103
Old	2,498	2,632	2,325	93	88
Total	234,629	221,334	227,202	97	103
Ducks	3,886	3,515	3,668	94	104
Other Poultry	247	179	200	81	112
Total Poultry	2,641,849	2,507,812	2,630,235	100	105
Frozen					
Chickens					
Young	229,263	222,618	223,653	98	100
Mature	658	1,012	1,516	230	150
Light	547	874	1,395	255	160
Heavy	111	138	121	109	88
Total	229,921	223,630	225,169	98	101
Turkeys					
Young	226,596	229,109	222,901	98	97
Old	782	776	636	81	82
Total	227,378	229,885	223,537	98	97
Ducks	6,341	5,961	6,032	95	101
Other Poultry	279	237	191	68	81
Total Poultry	463,919	459,713	454,929	98	99
Total Chilled and Frozen					
Chickens					
Young	2,588,621	2,465,608	2,581,515	100	105
Mature	44,387	40,806	42,819	96	105
Light	15,185	14,120	14,658	97	104
Heavy	29,202	26,686	28,161	96	106
Total	2,633,008	2,506,414	2,624,334	100	105
Turkeys					
Young	458,727	447,811	447,778	98	100
Old	3,280	3,408	2,961	90	87
Total	462,007	451,219	450,739	98	100
Ducks	10,227	9,476	9,700	95	102
Other Poultry	526	416	391	74	94
Total Poultry	3,105,768	2,967,525	3,085,164	99	104

See footnote(s) at end of table.

--continued

**Poultry Slaughter: Chilled and Frozen, Pounds Certified by Type,
United States, March 2002 ¹ (continued)**

Commodity	January to Date			Percent of	
	2000	2001	2002	2000	2001
	<i>1,000 Pounds</i>	<i>1,000 Pounds</i>	<i>1,000 Pounds</i>	<i>Percent</i>	<i>Percent</i>
Chilled					
Chickens					
Young	6,938,578	6,879,691	7,134,800	103	104
Mature	123,188	124,354	127,605	104	103
Light	40,843	40,988	42,971	105	105
Heavy	82,345	83,366	84,634	103	102
Total	7,061,766	7,004,045	7,262,405	103	104
Turkeys					
Young	628,149	658,009	679,663	108	103
Old	6,222	7,835	9,200	148	117
Total	634,371	665,844	688,863	109	103
Ducks	11,033	11,743	11,337	103	97
Other Poultry	941	605	568	60	94
Total Poultry	7,708,111	7,682,237	7,963,173	103	104
Frozen					
Chickens					
Young	664,790	653,302	698,852	105	107
Mature	9,210	2,392	3,979	43	166
Light	5,147	1,943	3,380	66	174
Heavy	4,063	449	599	15	133
Total	674,000	655,694	702,831	104	107
Turkeys					
Young	647,556	664,957	695,049	107	105
Old	2,513	1,687	2,006	80	119
Total	650,069	666,644	697,055	107	105
Ducks	17,738	19,018	18,551	105	98
Other Poultry	927	853	689	74	81
Total Poultry	1,342,734	1,342,209	1,419,126	106	106
Total Chilled and Frozen					
Chickens					
Young	7,603,368	7,532,993	7,833,652	103	104
Mature	132,398	126,746	131,584	99	104
Light	45,990	42,931	46,351	101	108
Heavy	86,408	83,815	85,233	99	102
Total	7,735,766	7,659,739	7,965,236	103	104
Turkeys					
Young	1,275,705	1,322,966	1,374,712	108	104
Old	8,735	9,522	11,206	128	118
Total	1,284,440	1,332,488	1,385,918	108	104
Ducks	28,771	30,761	29,888	104	97
Other Poultry	1,868	1,458	1,257	67	86
Total Poultry	9,050,845	9,024,446	9,382,299	104	104

¹ Ready-to-cook weights.

**Poultry Slaughter: Ante-Mortem Condemnations by Type,
United States, March 2002 ¹**

Commodity	Mar 2001	Feb 2002	Mar 2002	Percent of		January to Date		Percent of 2001
				Mar 2001	Feb 2002	2001	2002	
				<i>1,000 Pounds</i>	<i>1,000 Pounds</i>			
Live Weight				<i>Percent</i>	<i>Percent</i>			<i>Percent</i>
Chickens								
Young	13,802	14,280	15,938	115	112	42,912	46,107	107
Mature	1,125	1,123	1,234	110	110	3,500	3,652	104
Light	496	467	477	96	102	1,648	1,583	96
Heavy	629	656	757	120	115	1,852	2,069	112
Total	14,927	15,403	17,172	115	111	46,412	49,759	107
Turkeys								
Young	2,604	1,586	1,622	62	102	6,388	5,224	82
Old	50	35	50	100	143	158	157	99
Total	2,654	1,621	1,672	63	103	6,546	5,381	82
Ducks	20	19	49	245	258	62	137	221
Other Poultry	4	2	3	75	150	11	6	55
Total Poultry	17,605	17,045	18,896	107	111	53,031	55,283	104
	<i>Percent</i>	<i>Percent</i>	<i>Percent</i>	<i>Percent</i>	<i>Percent</i>	<i>Percent</i>	<i>Percent</i>	<i>Percent</i>
Percent of Total Weight Condemned ²								
Chickens								
Young	0.39	0.43	0.45	115	105	0.42	0.43	102
Mature	1.53	1.64	1.73	113	105	1.65	1.66	101
Light	1.69	1.69	1.68	99	99	1.96	1.76	90
Heavy	1.42	1.61	1.76	124	109	1.45	1.59	110
Total	0.42	0.45	0.48	114	107	0.44	0.46	105
Turkeys								
Young	0.45	0.28	0.29	64	104	0.38	0.30	79
Old	1.18	0.79	1.28	108	162	1.29	1.06	82
Total	0.45	0.28	0.29	64	104	0.39	0.31	79
Ducks	0.15	0.15	0.38	253	253	0.15	0.34	227
Other Poultry	0.49	0.29	0.46	94	159	0.46	0.28	61
Total Poultry	0.42	0.43	0.45	107	105	0.44	0.44	100

¹ Federally inspected only.

² Pounds condemned as a percent of live weight pounds inspected.

**Poultry Slaughter: Post-Mortem Condemnations by Type,
United States, March 2002 ¹**

Commodity	Mar 2001	Feb 2002	Mar 2002	Percent of		January to Date		Percent of 2001
				Mar 2001	Feb 2002	2001	2002	
				<i>1,000 Pounds</i>				
	<i>1,000 Pounds</i>	<i>1,000 Pounds</i>	<i>1,000 Pounds</i>	<i>Percent</i>	<i>Percent</i>	<i>1,000 Pounds</i>	<i>1,000 Pounds</i>	<i>Percent</i>
N.Y. Dressed Weight								
Chickens								
Young	46,299	33,002	35,281	76	107	133,232	105,654	79
Mature	4,081	3,563	3,252	80	91	11,382	11,109	98
Light	2,226	2,073	1,811	81	87	6,337	6,336	100
Heavy	1,855	1,490	1,441	78	97	5,045	4,773	95
Total	50,380	36,565	38,533	76	105	144,614	116,763	81
Turkeys								
Young	13,071	10,513	10,537	81	100	37,789	32,453	86
Old	305	296	295	97	100	825	1,037	126
Total	13,376	10,809	10,832	81	100	38,614	33,490	87
Ducks	305	230	238	78	103	1,007	730	72
Other Poultry	9	8	8	89	100	25	24	96
Total Poultry	64,070	47,612	49,611	77	104	184,260	151,007	82
	<i>Percent</i>	<i>Percent</i>	<i>Percent</i>	<i>Percent</i>	<i>Percent</i>	<i>Percent</i>	<i>Percent</i>	<i>Percent</i>
Percent of Total Weight Condemned ²								
Chickens								
Young	1.46	1.10	1.12	77	102	1.45	1.11	77
Mature	6.16	5.77	5.05	82	88	5.96	5.61	94
Light	8.42	8.32	7.07	84	85	8.39	7.85	94
Heavy	4.66	4.05	3.72	80	92	4.37	4.07	93
Total	1.56	1.20	1.20	77	100	1.54	1.20	78
Turkeys								
Young	2.50	2.06	2.07	83	100	2.51	2.07	82
Old	7.94	7.46	8.47	107	114	7.45	7.79	105
Total	2.54	2.10	2.12	83	101	2.55	2.12	83
Ducks	2.42	2.05	2.03	84	99	2.62	2.05	78
Other Poultry	1.09	1.50	1.43	131	95	1.07	1.37	128
Total Poultry	1.70	1.33	1.32	78	99	1.68	1.33	79

¹ Federally inspected only.

² Pounds condemned as a percent of N.Y. dressed weight of quantity inspected.

**Young Chickens Slaughtered: Number, Live Weight, and Average Live Weight,
by State and United States, March 2002**

State	Number Slaughtered		Live Weight		Average Live Weight	
	2001	2002	2001	2002	2001	2002
	<i>1,000 Head</i>	<i>1,000 Head</i>	<i>1,000 Pounds</i>	<i>1,000 Pounds</i>	<i>Pounds</i>	<i>Pounds</i>
AL	82,316	81,279	416,570	424,263	5.06	5.22
AR	98,182	95,538	472,993	474,507	4.82	4.97
CA	*	*	*	*	*	*
DE	21,569	21,058	122,701	125,931	5.69	5.98
FL	10,263	9,980	55,850	56,293	5.44	5.64
GA	99,260	97,899	495,660	486,088	4.99	4.97
KY	20,243	20,239	104,670	103,368	5.17	5.11
LA	14,566	13,740	68,998	66,796	4.74	4.86
MD	16,692	15,777	78,653	75,421	4.71	4.78
MS	60,787	60,921	301,293	314,661	4.96	5.17
MO	30,656	29,089	138,071	137,730	4.50	4.73
NJ	*	*	*	*	*	*
NY	*	*	*	*	*	*
NC	53,786	53,395	312,657	315,191	5.81	5.90
OH	2,827	3,018	15,626	16,931	5.53	5.61
PA	9,506	8,532	49,650	44,619	5.22	5.23
SC	20,033	19,344	104,307	107,688	5.21	5.57
TN	19,014	19,002	88,673	89,802	4.66	4.73
TX	51,645	50,834	252,804	250,198	4.90	4.92
VA	29,324	27,237	144,762	133,668	4.94	4.91
WA	*	4,412	*	23,631	*	5.36
Oth Sts	60,147	54,179	291,854	262,258	4.85	4.84
US	700,816	685,473	3,515,792	3,509,044	5.02	5.12

* Included in "Other States" to avoid disclosing individual operations.

**Young Chickens Slaughtered: Pounds Certified and Post-Mortem Condemnations
by State and United States, March 2002**

State	Total Chilled and Frozen Pounds Certified ¹		Post-Mortem Condemnations			
			N.Y. Dressed Weight		Percent ²	
	2001	2002	2001	2002	2001	2002
	<i>1,000 Pounds</i>	<i>1,000 Pounds</i>	<i>1,000 Pounds</i>	<i>1,000 Pounds</i>	<i>Percent</i>	<i>Percent</i>
AL	300,611	304,607	6,146	4,030	1.64	1.06
AR	343,075	337,800	6,664	5,544	1.57	1.30
CA	*	*	*	*	*	*
DE	88,844	91,016	2,653	2,060	2.40	1.82
FL	40,211	39,864	860	611	1.71	1.21
GA	368,109	350,944	6,062	4,024	1.36	0.92
KY	77,844	76,524	620	787	0.66	0.85
LA	48,789	48,200	611	392	0.98	0.65
MD	55,422	54,724	1,240	985	1.75	1.45
MS	229,045	235,159	2,838	2,430	1.05	0.86
MO	98,125	99,200	1,988	1,431	1.60	1.15
NJ	*	*	*	*	*	*
NY	*	*	*	*	*	*
NC	234,226	251,387	4,822	4,032	1.71	1.42
OH	11,240	12,293	258	312	1.83	2.05
PA	34,989	31,174	1,110	1,144	2.48	2.85
SC	75,635	79,196	1,471	1,087	1.57	1.12
TN	64,342	65,447	723	633	0.91	0.78
TX	196,970	195,494	3,065	2,047	1.35	0.91
VA	104,110	97,449	1,595	1,355	1.22	1.13
WA	*	17,617	*	350	*	1.65
Oth Sts	217,034	193,420	3,573	2,027	1.36	0.86
US	2,588,621	2,581,515	46,299	35,281	1.46	1.12

* Included in "Other States" to avoid disclosing individual operations.

¹ Ready-to-cook weights.

² Pounds condemned as percent of equivalent N.Y. dressed weight of quantity inspected.

**Chickens Slaughtered: Number Condemned Post-Mortem by Cause, by Type,
by State and United States, March 2002**

State	Tuber- culosis	Leukosis	Septicemia	Airsac- culitis	Synovitis	Tumors
	<i>Number of Head</i>	<i>Number of Head</i>	<i>Number of Head</i>	<i>Number of Head</i>	<i>Number of Head</i>	<i>Number of Head</i>
Young Birds						
AL		833	124,587	69,047	1,841	5,212
AR		3,527	275,077	151,685	6,309	2,668
CA		5,689	121,747	3,696	154	1,420
DE		*	101,429	48,770	*	*
FL		*	*	*	*	*
GA		1,478	96,509	111,851	447	5,596
IN		*	*	*	*	*
KY		*	31,835	23,022	*	*
LA		*	16,288	13,774	178	576
MD		4,915	56,708	33,385	60	*
MS		*	77,106	86,411	*	1,179
MO		1,760	83,487	41,078	1,633	3,039
NJ		*	*	*	*	*
NY		*	*	*	210	*
NC		2,308	101,220	60,883	84	16,905
OH		*	20,043	3,464	*	446
PA		418	30,162	27,760	334	*
SC		135	23,907	*	29	1,287
TN		476	39,177	12,825	300	599
TX		*	111,211	67,169	306	1,738
VA		*	59,248	64,361	*	*
WA		*	22,295	*	*	*
Oth Sts		6,520	81,647	55,088	2,768	21,256
US		28,059	1,473,683	874,269	14,653	61,921
Mature Birds						
Light		2,563	220,941	11,282	260	112,616
Heavy		1,191	71,029	4,167	167	8,927
US		3,754	291,970	15,449	427	121,543

See footnote(s) at end of table.

--continued

**Chickens Slaughtered: Number Condemned Post-Mortem by Cause, by Type,
by State and United States, March 2002 (continued)**

	Bruises	Cadaver	Contam-ination	Overscald	Other	Total ¹
	<i>Number of Head</i>	<i>Number of Head</i>	<i>Number of Head</i>	<i>Number of Head</i>	<i>Number of Head</i>	<i>Number of Head</i>
Young Birds						
AL	5,319	23,382	27,967	5,440	102,840	366,468
AR	7,080	32,045	32,553	2,875	66,204	580,023
CA	303	*	1,268	*	11,586	151,598
DE	2,199	9,987	8,439	4,655	27,604	211,375
FL	*	3,801	*	*	10,128	57,935
GA	5,682	39,620	17,994	4,752	173,577	457,506
IN	115	*	*	2	*	14,135
KY	238	12,431	4,040	*	8,738	83,629
LA	542	4,237	*	*	2,175	43,734
MD	*	*	*	1,082	20,199	173,097
MS	2,363	13,099	9,874	374	56,967	248,235
MO	*	12,883	10,913	*	32,077	192,845
NJ	*	*	*		*	*
NY	730	*	4,275	*	*	*
NC	4,187	25,916	19,207	5,838	59,184	295,732
OH	270	*	*	*	*	38,169
PA	1,619	6,614	5,400	*	48,410	121,786
SC	*	6,163	3,645	*	10,344	78,750
TN	1,234	6,965	4,527	845	16,694	83,642
TX	1,181	8,645	15,144	*	24,253	231,560
VA	1,412	7,169	*	804	21,010	170,980
WA	*	*	447	*	*	*
Oth Sts	8,515	29,539	79,312	17,073	42,171	159,777
US	42,989	242,496	245,005	43,740	734,161	3,760,976
Mature Birds						
Light	15,441	18,793	116,978	2,173	27,625	528,672
Heavy	1,679	13,468	15,210	835	42,568	159,241
US	17,120	32,261	132,188	3,008	70,193	687,913

* Included in "Other States" to avoid disclosing individual operations.

¹ The sum of the individual diseases does not add across to the total for "Other States".

Young Turkeys (Mature) Slaughtered: Number, Live Weight, and Average Live Weight, by State and United States, March 2002

State	Number Slaughtered		Live Weight		Average Live Weight	
	2001	2002	2001	2002	2001	2002
	<i>1,000 Head</i>	<i>1,000 Head</i>	<i>1,000 Pounds</i>	<i>1,000 Pounds</i>	<i>Pounds</i>	<i>Pounds</i>
AR	2,297	2,591	41,571	45,050	18.10	17.38
CA	1,122	1,184	28,814	29,779	25.68	25.16
IA	1,323	1,321	42,447	41,686	32.07	31.55
MN	3,094	2,526	79,484	71,036	25.69	28.12
MO	2,070	1,726	53,657	53,647	25.92	31.09
NC	2,934	3,415	77,278	85,198	26.34	24.95
OH	*	*	*	*	*	*
PA	*	*	*	*	*	*
VA	3,069	2,885	69,074	64,019	22.51	22.19
Oth Sts	5,729	5,124	188,297	174,783	32.87	34.11
US	21,638	20,772	580,622	565,198	26.83	27.21

* Included in "Other States" to avoid disclosing individual operations.

Young Turkeys (Mature) Slaughtered: Pounds Certified and Post-Mortem Condemnations, by State and United States, March 2002

State	Total Chilled and Frozen Pounds Certified ¹		Post-Mortem Condemnations			
			N.Y. Dressed Weight		Percent ²	
	2001	2002	2001	2002	2001	2002
	<i>1,000 Pounds</i>	<i>1,000 Pounds</i>	<i>1,000 Pounds</i>	<i>1,000 Pounds</i>	<i>Percent</i>	<i>Percent</i>
AR	34,677	37,377	628	790	1.68	1.95
CA	24,689	26,292	610	520	2.35	1.94
IA	32,300	32,440	1,316	1,213	3.44	3.23
MN	62,977	56,821	2,637	1,649	3.69	2.58
MO	42,285	41,556	1,269	1,253	2.63	2.59
NC	60,889	67,069	1,484	1,298	2.13	1.69
OH	*	*	*	*	*	*
PA	*	*	*	*	*	*
VA	53,572	49,900	884	773	1.42	1.34
Oth Sts	147,338	136,323	4,243	3,041	2.50	1.93
US	458,727	447,778	13,071	10,537	2.50	2.07

* Included in "Other States" to avoid disclosing individual operations.

¹ Ready-to-cook weights.

² Pounds condemned as percent of equivalent N.Y. dressed weight of quantity inspected.

**Turkeys Slaughtered: Number Condemned Post-Mortem by Cause, by Type,
by State and United States, March 2002**

State	Tuber- culosis	Leukosis	Septicemia	Airsac- culitis	Synovitis	Tumors
	<i>Number of Head</i>	<i>Number of Head</i>	<i>Number of Head</i>	<i>Number of Head</i>	<i>Number of Head</i>	<i>Number of Head</i>
Young (Mature)						
AR		*	7,847	*	*	9
CA		*	*	*	*	*
IA			6,990	3,708	*	6
MN		*	15,195	3,012	*	*
MO			13,609	*	*	*
NC			*	*	*	*
OH		*	*	*	*	*
PA		*	*	482	*	*
VA			2,727	*	*	*
Other States		133	39,706	6,202	4,565	96
US		133	86,074	13,404	4,565	111
Old (Breeders)						
US		197	4,998	754	58	144
	Bruises	Cadaver	Contam- ination	Overscald	Other	Total ¹
	<i>Number of Head</i>	<i>Number of Head</i>	<i>Number of Head</i>	<i>Number of Head</i>	<i>Number of Head</i>	<i>Number of Head</i>
Young (Mature)						
AR	*	626	*	*	*	11,556
CA	74	*	111	*	460	7,238
IA	43	*	434	*	*	15,140
MN	110	381	479	11	1,121	21,117
MO	*	*	*	*	*	18,621
NC	94	*	*	*	*	12,556
OH	*	*	*	*	*	*
PA	*	*	*	*	*	*
VA	*	*	286	354	*	6,726
Other States	413	6,976	8,347	1,072	11,352	44,077
US	734	7,983	9,657	1,437	12,933	137,031
Old (Breeders)						
US	13	97	88	28	297	6,674

* Included in "Other States" to avoid disclosing individual operations.

¹ The sum of the individual diseases does not add across to the total for "Other States".

Poultry Slaughter Estimates

Data Sources: Primary data for poultry slaughter estimates are obtained from the Poultry Inspection Form (FSIS 6000-21). This form is completed by inspectors of the Food Safety and Inspection Service (FSIS), USDA for all Federally Inspected (FI) plants. Over 99 percent of the total U.S. slaughter for any species is under FI. The FSIS 6000-21 forms collect number of head slaughtered daily under FI by species and class as well as condemnations and total live and dressed weights. Approximately 350 plants in the U.S. are operated under Federal Inspection.

Revision Policy: Revisions are generally the result of late reports received by FSIS from plants and are usually less than one-half of 1 percent of the preliminary totals. Revisions for the previous month and year-to-date totals are published in each monthly release. Final data are published in the annual summary released in April and reflect any late reports or corrections which occurred after the monthly revision were published.

Procedures and Reliability: Plant inspectors submit forms (FSIS 6000-21) weekly summarizing the plant's activity. When inconsistencies in the data are detected, the reports are returned to the inspectors for correction. Inspectors correct or validate the report and resubmit it. The reports cover weekly activities through Saturday night and reported data are allocated to the appropriate month as it enters the database.

A NASS computer program provides a review of current data with historical data for each plant. An edit provides checks for the detection of errors such as invalid plant information, duplication, and erroneous data. Data are summarized weekly and accumulated to monthly totals for this release.

Data for major slaughter plants with missing reports are adjusted prior to publication to assure that all plants slaughtering a significant portion of a specific class are accounted for each week. Estimates for missing weeks are made only after verifying that the plant was in operation. Adjustments are based on either the previous week's information or a week determined to be similar to the one missing. Late reports replace imputed data as they become available. While there is a varying degree of incompleteness from month to month, it has only a minimal impact on the published totals.

Poultry slaughter estimates are based on a census of operating plants and, therefore, have no sampling error. However, they may be subject to errors such as omissions, duplications, and mistakes in reporting, recording, and processing the data. These errors are minimized through strict quality controls in the edit and summarization process, and a careful review of all reported data for consistency and reasonableness.

State data are published for selected states for young chickens and young turkeys. State data are not published if less than three plants operate for a species in a State, or if one plant has 60 percent or more of the total live weight for that species. Data for all states not published are included in the "Other States" category. Also included in this category are data for published states that are confidential (denoted by an *). Data for all states are included in the U.S. totals. For 2001, young chickens were killed in 31 states, young turkeys in 21 states.

Definitions

Ante-Mortem Condemnations - Birds condemned prior to their entry into the slaughter plant.

Certified Ready-to-Cook - The weight of poultry certified wholesome by inspection after post-mortem condemnation pounds are removed. Ready-to-cook represents poultry meat ready for the marketing channel.

Ducks - Includes all ducks regardless of age and weight.

Fryer-Roaster Turkeys - Young immature birds, usually under 16 weeks of age. Included with young turkeys.

Mature Chickens - Fowl from breeder and market egg flocks and stags and cocks.

New York Dressed Weight - Carcass weight after only feathers and blood are removed. This weight is approximately 90% of live weight.

Old Turkeys (Breeders) - Fully matured birds held for egg production, usually over 15 months of age.

Other Poultry - Includes all other ready-to-cook products which bear the USDA Inspected for Wholesomeness legend.

Post-Mortem Condemnations - Carcasses or parts condemned by the inspector because of disease or mishandling and removed from the slaughter line and destroyed.

Young Chickens - Commercially grown broilers-fryers and other young immature birds such as roasters and capons.

Young Turkeys (Mature) - Young birds grown to a matured market age, about 5 months.

The next "Poultry Slaughter" report will be released at 3 p.m. ET on June 7, 2002.

The United States Department of Agriculture (USDA) prohibits discrimination in all its programs on the basis of race, color, national origin, gender, religion, age, disability, political beliefs, sexual orientation, and marital or family status. (Not all prohibited bases apply to all programs.) Persons with disabilities who require alternative means for communication of program information (braille, large print, audiotape, etc.) should contact the USDA's TARGET Center at 202-720-2600 (voice and TDD).

To file a complaint of discrimination, write USDA, Director, Office of Civil Rights, Room 326-W, Whitten Building, 1400 Independence Avenue, SW, Washington, D.C., 20250-9410, or call 202-720-5964 (voice or TDD). USDA is an equal opportunity provider and employer.

ACCESS TO REPORTS!!

For your convenience, there are several ways to obtain NASS reports, data products, and services:

INTERNET ACCESS

All NASS reports are available free of charge on the worldwide Internet. For access, connect to the Internet and go to the NASS Home Page at: <http://www.usda.gov/nass/>. Select "Today's Reports" or Publications and then Reports by Calendar or Publications and then Search, by Title or Subject.

E-MAIL SUBSCRIPTION

There are two options for subscribing via e-mail. All NASS reports are available by subscription free of charge direct to your e-mail address. 1) Starting with the NASS Home Page at <http://www.usda.gov/nass/>, click on **Publications**, then click on the **Subscribe by E-mail** button which takes you to the page describing e-mail delivery of reports. Finally, click on **Go to the Subscription Page** and follow the instructions. 2) If you do NOT have Internet access, send an e-mail message to: usda-reports@usda.mannlib.cornell.edu. In the body of the message type the word: **list**.

AUTOFAX ACCESS

NASSFax service is available for some reports from your fax machine. Please call 202-720-2000, using the handset attached to your fax. Respond to the voice prompts. Document 0411 is a list of available reports.

PRINTED REPORTS OR DATA PRODUCTS

CALL OUR TOLL-FREE ORDER DESK: 800-999-6779 (U.S. and Canada)
Other areas, please call 703-605-6220 FAX: 703-605-6900
(Visa, MasterCard, check, or money order acceptable for payment.)

ASSISTANCE

For **assistance** with general agricultural statistics or further information about NASS or its products or services, contact the **Agricultural Statistics Hotline** at **800-727-9540**, 7:30 a.m. to 4:00 p.m. ET, or e-mail: nass@nass.usda.gov.
