



# Poultry Slaughter

---

Released August 2, 2002, by the National Agricultural Statistics Service (NASS), Agricultural Statistics Board, U.S. Department of Agriculture. For information on "Poultry Slaughter" call John Lange at 202-720-0585, office hours 7:00 a.m. to 4:30 p.m. ET.

## Ready-to-Cook Weight Down 3 Percent

Poultry certified wholesome during June 2002 (ready-to-cook weight) totaled 3.06 billion pounds, down 3 percent from the amount certified in June 2001. Updated totals for May 2002 show that 3.46 billion pounds were certified.

The preliminary total live weight of poultry inspected during June 2002 was 4.11 billion pounds, down 3 percent from a year ago. Young chickens inspected totaled 3.46 billion pounds, down 3 percent from June 2001, while mature chickens totaled 73.3 million pounds, up slightly from the previous year. Turkey inspections totaled 572 million pounds, down 3 percent, and ducks totaled 11.7 million pounds, a 20 percent decrease.

Young chickens slaughtered during June 2002 averaged 5.10 pounds per bird, up 2 percent from June 2001. The average live weight of mature chickens was 5.51 pounds per bird, up 2 percent from a year ago. Turkeys slaughtered during June 2002 averaged 26.8 pounds per bird, up 3 percent from June 2001.

Ante-mortem condemnations during June 2002 totaled 18.6 million pounds. Condemnations were 0.45 percent of the live weight inspected, the same as a year earlier. Post-mortem condemnations, at 43.4 million pounds (N.Y. dressed weight), were 1.17 percent of quantities inspected, compared with 1.46 percent a year earlier.

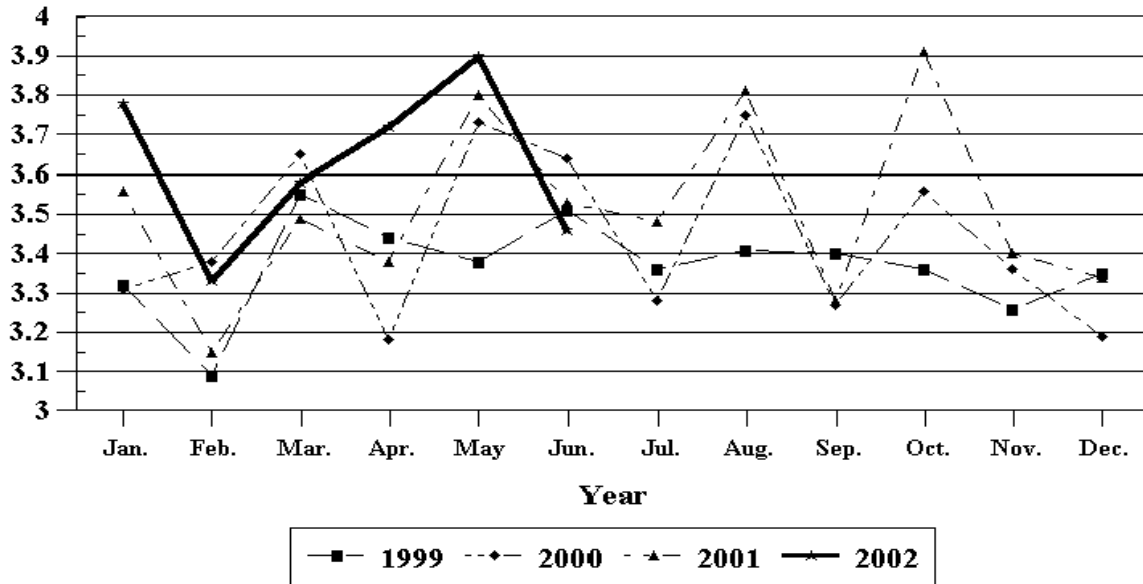
June 2002 contained 20 weekdays and five Saturdays.  
June 2001 contained 21 weekdays and five Saturdays

## Contents

	<b>Page</b>
Poultry Slaughter: Number, Live Weight, and Average Live Weight by Type, United States, June 2002 .....	4
Poultry Slaughter: Chilled and Frozen, Pounds Certified by Type, United States, June 2002 .....	6
Poultry Slaughter: Ante-Mortem Condemnations by Type, United States, June 2002 .....	8
Poultry Slaughter: Post-Mortem Condemnations by Type, United States, June 2002 .....	9
Young Chickens Slaughtered: Number, Live Weight, and Average Live Weight, by State and United States, June 2002 .....	10
Young Chickens Slaughtered: Pounds Certified and Post-Mortem Condemnations, by State and United States, June 2002 .....	11
Young Chickens Slaughtered: Number Condemned Post-Mortem by Cause, by Type, by State and United States, June 2002 .....	12
Young Turkeys (Mature) Slaughtered: Number, Live Weight, and Average Live Weight, by State and United States, June 2002 .....	14
Young Turkeys (Mature) Slaughtered: Pounds Certified and Post-Mortem Condemnations, by State and United States, June 2002 .....	14
Young Turkeys Slaughtered: Number Condemned Post-Mortem by Cause, by Type, by State and United States, June 2002 .....	15
Reliability Statement .....	16
Definitions .....	17

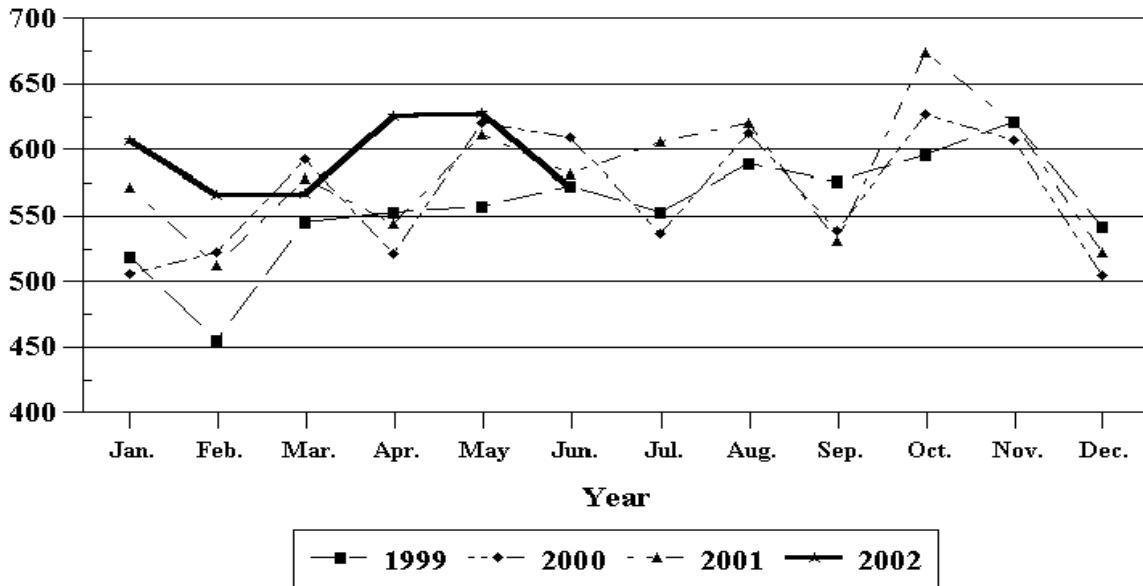
## Young Chickens: Live Weight Slaughtered, by Month, 1999-2002

**Billion Pounds**



## Young Turkeys: Live Weight Slaughtered, by Month, 1999-2002

**Million Pounds**



**Poultry Slaughter: Number, Live Weight, and Average Live Weight by Type,  
United States, June 2002<sup>1</sup>**

Commodity	Jun 2001	May 2002	Jun 2002	Percent of	
				Jun 2001	May 2002
	<i>1,000 Head</i>	<i>1,000 Head</i>	<i>1,000 Head</i>	<i>Percent</i>	<i>Percent</i>
Number Slaughtered					
Chickens					
Young	709,053	759,587	678,252	96	89
Mature	13,522	14,505	13,305	98	92
Light	7,676	8,341	7,273	95	87
Heavy	5,846	6,164	6,032	103	98
Total	722,575	774,092	691,557	96	89
Turkeys					
Young	22,414	23,503	21,204	95	90
Old	160	108	169	106	156
Total	22,574	23,611	21,373	95	91
Ducks	2,216	2,176	1,762	80	81
	<i>1,000 pounds</i>	<i>1,000 pounds</i>	<i>1,000 pounds</i>	<i>Percent</i>	<i>Percent</i>
Live Weight					
Chickens					
Young	3,560,370	3,895,481	3,456,386	97	89
Mature	73,043	76,992	73,283	100	95
Light	26,687	28,366	25,124	94	89
Heavy	46,356	48,626	48,159	104	99
Total	3,633,413	3,972,473	3,529,669	97	89
Turkeys					
Young	582,459	625,245	567,532	97	91
Old	4,202	2,997	4,423	105	148
Total	586,661	628,242	571,955	97	91
Ducks	14,652	14,526	11,725	80	81
Other Poultry	885	812	640	72	79
Total Poultry	4,235,611	4,616,053	4,113,989	97	89
	<i>Pounds</i>	<i>Pounds</i>	<i>Pounds</i>	<i>Percent</i>	<i>Percent</i>
Average Live Weight					
Chickens					
Young	5.02	5.13	5.10	102	99
Mature	5.40	5.31	5.51	102	104
Light	3.48	3.40	3.45	99	101
Heavy	7.93	7.89	7.98	101	101
Total	5.03	5.13	5.10	101	99
Turkeys					
Young	25.98	26.60	26.76	103	101
Old	26.30	27.68	26.10	99	94
Total	25.99	26.61	26.76	103	101
Ducks	6.61	6.68	6.65	101	100

See footnote(s) at end of table.

--continued

**Poultry Slaughter: Number, Live Weight, and Average Live Weight by Type,  
United States, June 2002 <sup>1</sup> (continued)**

Commodity	January to Date			Percent of	
	2000	2001	2002	2000	2001
	<i>1,000 Head</i>	<i>1,000 Head</i>	<i>1,000 Head</i>	<i>Percent</i>	<i>Percent</i>
<b>Number Slaughtered</b>					
Chickens					
Young	4,180,602	4,179,391	4,252,689	102	102
Mature	87,055	81,320	86,329	99	106
Light	51,254	47,152	51,623	101	109
Heavy	35,801	34,168	34,706	97	102
Total	4,267,657	4,260,711	4,339,018	102	102
Turkeys					
Young	128,952	127,864	130,441	101	102
Old	938	956	1,036	110	108
Total	129,890	128,820	131,477	101	102
Ducks	11,908	13,280	11,934	100	90
	<i>1,000 pounds</i>	<i>1,000 pounds</i>	<i>1,000 pounds</i>	<i>Percent</i>	<i>Percent</i>
<b>Live Weight</b>					
Chickens					
Young	20,891,858	21,037,964	21,703,935	104	103
Mature	453,834	428,740	449,641	99	105
Light	174,868	161,382	176,195	101	109
Heavy	278,966	267,358	273,446	98	102
Total	21,345,692	21,466,704	22,153,576	104	103
Turkeys					
Young	3,372,289	3,410,906	3,551,684	105	104
Old	24,798	25,599	28,671	116	112
Total	3,397,087	3,436,505	3,580,355	105	104
Ducks	79,064	87,694	80,299	102	92
Other Poultry	5,881	4,924	4,410	75	90
Total Poultry	24,827,724	24,995,827	25,818,640	104	103
	<i>Pounds</i>	<i>Pounds</i>	<i>Pounds</i>	<i>Percent</i>	<i>Percent</i>
<b>Average Live Weight</b>					
Chickens					
Young	5.00	5.03	5.10	102	101
Mature	5.21	5.27	5.21	100	99
Light	3.41	3.42	3.41	100	100
Heavy	7.79	7.82	7.88	101	101
Total	5.00	5.04	5.11	102	101
Turkeys					
Young	26.15	26.68	27.23	104	102
Old	26.44	26.79	27.67	105	103
Total	26.15	26.68	27.23	104	102
Ducks	6.64	6.60	6.73	101	102

<sup>1</sup> Federally inspected only.

**Poultry Slaughter: Chilled and Frozen, Pounds Certified by Type,  
United States, June 2002 <sup>1</sup>**

Commodity	Jun 2001	May 2002	Jun 2002	Percent of	
				Jun 2001	May 2002
	<i>1,000 Pounds</i>	<i>1,000 Pounds</i>	<i>1,000 Pounds</i>	<i>Percent</i>	<i>Percent</i>
<b>Chilled</b>					
Chickens					
Young	2,411,609	2,618,878	2,307,539	96	88
Mature	42,403	44,457	42,475	100	96
Light	12,464	12,745	11,627	93	91
Heavy	29,939	31,712	30,848	103	97
Total	2,454,012	2,663,335	2,350,014	96	88
Turkeys					
Young	205,003	245,105	218,106	106	89
Old	2,557	1,905	3,046	119	160
Total	207,560	247,010	221,152	107	90
Ducks	4,014	3,709	3,009	75	81
Other Poultry	265	220	177	67	80
<b>Total Poultry</b>	<b>2,665,851</b>	<b>2,914,274</b>	<b>2,574,352</b>	<b>97</b>	<b>88</b>
<b>Frozen</b>					
Chickens					
Young	225,019	280,189	251,547	112	90
Mature	1,616	2,039	1,557	96	76
Light	1,420	1,752	1,103	78	63
Heavy	196	287	454	232	158
Total	226,635	282,228	253,104	112	90
Turkeys					
Young	255,717	252,309	229,881	90	91
Old	599	361	379	63	105
Total	256,316	252,670	230,260	90	91
Ducks	6,400	6,692	5,328	83	80
Other Poultry	272	284	231	85	81
<b>Total Poultry</b>	<b>489,623</b>	<b>541,874</b>	<b>488,923</b>	<b>100</b>	<b>90</b>
<b>Total Chilled and Frozen</b>					
Chickens					
Young	2,636,628	2,899,067	2,559,086	97	88
Mature	44,019	46,496	44,032	100	95
Light	13,884	14,497	12,730	92	88
Heavy	30,135	31,999	31,302	104	98
Total	2,680,647	2,945,563	2,603,118	97	88
Turkeys					
Young	460,720	497,414	447,987	97	90
Old	3,156	2,266	3,425	109	151
Total	463,876	499,680	451,412	97	90
Ducks	10,414	10,401	8,337	80	80
Other Poultry	537	504	408	76	81
<b>Total Poultry</b>	<b>3,155,474</b>	<b>3,456,148</b>	<b>3,063,275</b>	<b>97</b>	<b>89</b>

See footnote(s) at end of table.

--continued

**Poultry Slaughter: Chilled and Frozen, Pounds Certified by Type,  
United States, June 2002 <sup>1</sup> (continued)**

Commodity	January to Date			Percent of	
	2000	2001	2002	2000	2001
	<i>1,000 Pounds</i>	<i>1,000 Pounds</i>	<i>1,000 Pounds</i>	<i>Percent</i>	<i>Percent</i>
<b>Chilled</b>					
Chickens					
Young	14,020,934	14,171,771	14,599,685	104	103
Mature	253,591	251,747	260,340	103	103
Light	81,062	77,894	83,019	102	107
Heavy	172,529	173,853	177,321	103	102
Total	14,274,525	14,423,518	14,860,025	104	103
Turkeys					
Young	1,280,618	1,302,249	1,375,927	107	106
Old	13,243	16,251	18,435	139	113
Total	1,293,861	1,318,500	1,394,362	108	106
Ducks	21,813	24,445	21,627	99	88
Other Poultry	1,707	1,265	1,219	71	96
<b>Total Poultry</b>	<b>15,591,906</b>	<b>15,767,728</b>	<b>16,277,233</b>	<b>104</b>	<b>103</b>
<b>Frozen</b>					
Chickens					
Young	1,336,739	1,349,147	1,478,697	111	110
Mature	19,069	6,883	9,131	48	133
Light	9,311	5,518	7,585	81	137
Heavy	9,758	1,365	1,546	16	113
Total	1,355,808	1,356,030	1,487,828	110	110
Turkeys					
Young	1,377,501	1,391,685	1,432,936	104	103
Old	5,229	3,272	3,369	64	103
Total	1,382,730	1,394,957	1,436,305	104	103
Ducks	34,614	38,718	37,584	109	97
Other Poultry	1,893	1,643	1,527	81	93
<b>Total Poultry</b>	<b>2,775,045</b>	<b>2,791,348</b>	<b>2,963,244</b>	<b>107</b>	<b>106</b>
<b>Total Chilled and Frozen</b>					
Chickens					
Young	15,357,673	15,520,918	16,078,382	105	104
Mature	272,660	258,630	269,471	99	104
Light	90,373	83,412	90,604	100	109
Heavy	182,287	175,218	178,867	98	102
Total	15,630,333	15,779,548	16,347,853	105	104
Turkeys					
Young	2,658,119	2,693,934	2,808,863	106	104
Old	18,472	19,523	21,804	118	112
Total	2,676,591	2,713,457	2,830,667	106	104
Ducks	56,427	63,163	59,211	105	94
Other Poultry	3,600	2,908	2,746	76	94
<b>Total Poultry</b>	<b>18,366,951</b>	<b>18,559,076</b>	<b>19,240,477</b>	<b>105</b>	<b>104</b>

<sup>1</sup> Ready-to-cook weights.

**Poultry Slaughter: Ante-Mortem Condemnations by Type,  
United States, June 2002 <sup>1</sup>**

Commodity	Jun 2001	May 2002	Jun 2002	Percent of		January to Date		Percent of 2001
				Jun 2001	May 2002	2001	2002	
	<i>1,000 Pounds</i>	<i>1,000 Pounds</i>	<i>1,000 Pounds</i>	<i>Percent</i>	<i>Percent</i>	<i>1,000 Pounds</i>	<i>1,000 Pounds</i>	<i>Percent</i>
Live Weight								
Chickens								
Young	15,582	13,224	14,876	95	112	84,603	87,576	104
Mature	1,521	1,207	1,684	111	140	7,034	7,976	113
Light	694	552	761	110	138	3,212	3,662	114
Heavy	827	655	923	112	141	3,822	4,314	113
Total	17,103	14,431	16,560	97	115	91,637	95,552	104
Turkeys								
Young	1,872	2,176	1,968	105	90	11,431	11,137	97
Old	63	35	54	86	154	362	316	87
Total	1,935	2,211	2,022	104	91	11,793	11,453	97
Ducks	36	17	19	53	112	160	191	119
Other Poultry	1	10	5	500	50	15	26	173
Total Poultry	19,075	16,669	18,606	98	112	103,605	107,222	103
	<i>Percent</i>	<i>Percent</i>	<i>Percent</i>	<i>Percent</i>	<i>Percent</i>	<i>Percent</i>	<i>Percent</i>	<i>Percent</i>
Percent of Total Weight Condemned <sup>2</sup>								
Chickens								
Young	0.44	0.34	0.43	98	126	0.40	0.40	100
Mature	2.08	1.57	2.30	111	146	1.64	1.77	108
Light	2.60	1.95	3.03	117	155	1.99	2.08	105
Heavy	1.78	1.35	1.92	108	142	1.43	1.58	110
Total	0.47	0.36	0.47	100	131	0.43	0.43	100
Turkeys								
Young	0.32	0.35	0.35	109	100	0.34	0.31	91
Old	1.49	1.15	1.22	82	106	1.41	1.10	78
Total	0.33	0.35	0.35	106	100	0.34	0.32	94
Ducks	0.25	0.12	0.16	64	133	0.18	0.24	133
Other Poultry	0.12	1.18	0.80	667	68	0.31	0.59	190
Total Poultry	0.45	0.36	0.45	100	125	0.41	0.42	102

<sup>1</sup> Federally inspected only.

<sup>2</sup> Pounds condemned as a percent of live weight pounds inspected.



**Poultry Slaughter: Post-Mortem Condemnations by Type,  
United States, June 2002 <sup>1</sup>**

Commodity	Jun 2001	May 2002	Jun 2002	Percent of		January to Date		Percent of 2001
				Jun 2001	May 2002	2001	2002	
	<i>1,000 Pounds</i>	<i>1,000 Pounds</i>	<i>1,000 Pounds</i>	<i>Percent</i>	<i>Percent</i>	<i>1,000 Pounds</i>	<i>1,000 Pounds</i>	<i>Percent</i>
<b>N.Y. Dressed Weight</b>								
Chickens								
Young	37,918	34,111	29,114	77	85	263,503	204,401	78
Mature	3,878	4,108	3,667	95	89	22,815	22,802	100
Light	1,882	2,085	1,663	88	80	11,610	12,262	106
Heavy	1,996	2,023	2,004	100	99	11,205	10,540	94
Total	41,796	38,219	32,781	78	86	286,318	227,203	79
Turkeys								
Young	13,356	11,147	10,081	75	90	74,259	65,075	88
Old	295	280	288	98	103	1,812	2,030	112
Total	13,651	11,427	10,369	76	91	76,071	67,105	88
Ducks	316	289	211	67	73	1,999	1,495	75
Other Poultry	11	11	8	73	73	52	54	104
<b>Total Poultry</b>	<b>55,774</b>	<b>49,946</b>	<b>43,369</b>	<b>78</b>	<b>87</b>	<b>364,440</b>	<b>295,857</b>	<b>81</b>
	<i>Percent</i>	<i>Percent</i>	<i>Percent</i>	<i>Percent</i>	<i>Percent</i>	<i>Percent</i>	<i>Percent</i>	<i>Percent</i>
<b>Percent of Total Weight Condemned <sup>2</sup></b>								
Chickens								
Young	1.18	0.97	0.94	80	97	1.39	1.05	76
Mature	5.90	5.93	5.56	94	94	5.91	5.63	95
Light	7.84	8.17	7.36	94	90	7.99	7.73	97
Heavy	4.78	4.62	4.63	97	100	4.66	4.28	92
Total	1.28	1.07	1.03	80	96	1.48	1.14	77
Turkeys								
Young	2.55	1.98	1.97	77	99	2.42	2.04	84
Old	7.81	10.40	7.25	93	70	7.86	7.87	100
Total	2.59	2.02	2.01	78	100	2.46	2.08	85
Ducks	2.40	2.21	2.00	83	90	2.53	2.07	82
Other Poultry	1.35	1.54	1.37	101	89	1.15	1.39	121
<b>Total Poultry</b>	<b>1.46</b>	<b>1.20</b>	<b>1.17</b>	<b>80</b>	<b>98</b>	<b>1.62</b>	<b>1.27</b>	<b>78</b>

<sup>1</sup> Federally inspected only.

<sup>2</sup> Pounds condemned as a percent of N.Y. dressed weight of quantity inspected.

**Young Chickens Slaughtered: Number, Live Weight, and Average Live Weight,  
by State and United States, June 2002**

State	Number Slaughtered		Live Weight		Average Live Weight	
	2001	2002	2001	2002	2001	2002
	<i>1,000 Head</i>	<i>1,000 Head</i>	<i>1,000 Pounds</i>	<i>1,000 Pounds</i>	<i>Pounds</i>	<i>Pounds</i>
AL	85,176	80,013	433,091	402,537	5.08	5.03
AR	97,497	92,801	470,463	457,683	4.83	4.93
CA	*	*	*	*	*	*
DE	21,938	20,268	129,437	121,365	5.90	5.99
FL	10,288	9,881	55,859	52,399	5.43	5.30
GA	100,581	97,988	496,276	485,177	4.93	4.95
KY	20,161	15,874	105,462	86,265	5.23	5.43
LA	15,574	15,762	74,461	70,411	4.78	4.47
MD	16,441	15,937	77,341	74,636	4.70	4.68
MS	62,627	58,375	312,719	311,274	4.99	5.33
MO	30,264	29,940	137,935	140,035	4.56	4.68
NJ	*	*	*	*	*	*
NY	*	*	*	*	*	*
NC	57,144	53,426	333,109	324,872	5.83	6.08
OH	3,208	3,544	17,373	19,217	5.42	5.42
PA	9,219	8,603	47,960	45,522	5.20	5.29
SC	19,638	19,725	101,761	110,282	5.18	5.59
TN	20,160	18,812	95,758	91,174	4.75	4.85
TX	50,153	50,168	238,447	243,727	4.75	4.86
VA	30,235	28,620	148,597	138,956	4.91	4.86
WA	*	4,894	*	26,060	*	5.32
Oth Sts	58,749	53,621	284,321	254,794	4.84	4.75
US	709,053	678,252	3,560,370	3,456,386	5.02	5.10

\* Included in "Other States" to avoid disclosing individual operations.

**Young Chickens Slaughtered: Pounds Certified and Post-Mortem Condemnations  
by State and United States, June 2002**

State	Total Chilled and Frozen Pounds Certified <sup>1</sup>		Post-Mortem Condemnations			
			N.Y. Dressed Weight		Percent <sup>2</sup>	
	2001	2002	2001	2002	2001	2002
	<i>1,000 Pounds</i>	<i>1,000 Pounds</i>	<i>1,000 Pounds</i>	<i>1,000 Pounds</i>	<i>Percent</i>	<i>Percent</i>
AL	320,107	297,924	5,074	3,588	1.30	0.99
AR	341,974	333,542	5,863	4,357	1.38	1.06
CA	*	*	*	*	*	*
DE	94,455	87,290	2,013	1,640	1.73	1.50
FL	40,759	36,991	731	514	1.45	1.09
GA	369,073	355,480	4,166	3,398	0.93	0.78
KY	78,201	62,359	679	737	0.71	0.95
LA	53,188	50,733	565	311	0.84	0.49
MD	55,497	53,488	926	781	1.33	1.16
MS	237,825	233,960	2,339	1,826	0.83	0.65
MO	100,280	101,803	2,016	1,015	1.62	0.81
NJ	*	*	*	*	*	*
NY	*	*	*	*	*	*
NC	256,971	253,447	3,911	2,966	1.30	1.01
OH	12,575	13,797	254	355	1.63	2.05
PA	34,093	31,382	975	1,008	2.26	2.46
SC	72,713	81,074	842	1,010	0.92	1.02
TN	68,767	66,242	731	605	0.85	0.74
TX	184,759	192,993	2,406	1,610	1.12	0.73
VA	106,264	98,042	1,484	1,234	1.11	0.99
WA	*	19,442	*	372	*	1.59
Oth Sts	209,127	189,097	2,943	1,787	1.15	0.78
US	2,636,628	2,559,086	37,918	29,114	1.18	0.94

\* Included in "Other States" to avoid disclosing individual operations.

<sup>1</sup> Ready-to-cook weights.

<sup>2</sup> Pounds condemned as percent of equivalent N.Y. dressed weight of quantity inspected.

**Chickens Slaughtered: Number Condemned Post-Mortem by Cause, by Type,  
by State and United States, June 2002**

State	Tuber- culosis	Leukosis	Septicemia	Airsac- culitis	Synovitis	Tumors
	<i>Number of Head</i>	<i>Number of Head</i>	<i>Number of Head</i>	<i>Number of Head</i>	<i>Number of Head</i>	<i>Number of Head</i>
Young Birds						
AL		767	105,587	39,369	1,876	4,155
AR		4,106	195,375	62,008	5,724	2,398
CA		4,389	*	2,570	175	799
DE		2,282	77,295	16,669	*	5,172
FL		118	*	4,528	*	*
GA		558	88,616	60,901	299	5,640
IN		24	4,530	*	*	*
KY		*	27,039	*	*	*
LA		97	13,015	7,579	*	277
MD		7,403	45,602	16,052	*	*
MS		*	63,794	16,515	518	*
MO		1,816	63,963	13,520	797	*
NJ		*	*	*	*	*
NY		215	*	*	237	*
NC		1,095	98,030	34,190	*	*
OH		*	21,812	*	58	391
PA		587	26,138	11,735	248	*
SC		162	20,431	*	*	*
TN		591	39,028	7,662	310	542
TX		*	95,856	48,638	233	1,374
VA		*	47,577	*	28	*
WA		*	*	*	*	*
Oth Sts		386,753	157,278	69,883	2,312	38,922
US		410,963	1,190,966	411,819	12,815	59,670
Mature Birds						
Light		2,552	172,707	12,784	99	100,364
Heavy		993	79,052	3,529	345	10,868
US		3,545	251,759	16,313	444	111,232

See footnote(s) at end of table.

--continued

**Chickens Slaughtered: Number Condemned Post-Mortem by Cause, by Type,  
by State and United States, June 2002 (continued)**

	Bruises	Cadaver	Contam-ination	Overscald	Other	Total <sup>1</sup>
	<i>Number of Head</i>	<i>Number of Head</i>	<i>Number of Head</i>	<i>Number of Head</i>	<i>Number of Head</i>	<i>Number of Head</i>
Young Birds						
AL	5,160	22,405	26,416	6,311	74,814	286,860
AR	7,072	21,733	29,293	4,144	45,998	377,851
CA	233	*	1,335	814	20,331	118,038
DE	2,296	9,926	10,411	*	19,891	154,263
FL	*	3,223	*	2,269	*	38,352
GA	5,190	36,516	17,760	5,817	119,556	340,853
IN	110	*	*	*	*	11,501
KY	220	*	3,245	*	5,370	73,846
LA	540	3,330	3,361	*	*	32,356
MD	*	17,021	*	1,248	13,933	127,993
MS	2,904	17,783	14,070	829	39,759	158,041
MO	1,404	9,301	11,723	*	30,231	139,994
NJ	*	*	*	*	*	*
NY	688	*	3,971	*	*	*
NC	3,996	23,119	20,761	6,842	60,672	265,391
OH	272	*	*	75	*	39,995
PA	1,418	5,250	4,855	*	53,645	104,733
SC	*	4,670	2,306	2,826	5,535	53,715
TN	1,167	9,219	4,529	662	13,590	77,300
TX	1,025	6,104	13,499	*	9,776	*
VA	1,434	10,891	*	*	27,022	136,780
WA	*	*	*	*	*	30,966
Oth Sts	6,701	29,597	63,375	24,970	54,458	671,621
US	41,830	230,088	230,910	56,807	594,581	3,240,449
Mature Birds						
Light	11,885	31,820	126,311	774	32,775	492,071
Heavy	1,703	23,814	13,691	4,593	52,648	191,236
US	13,588	55,634	140,002	5,367	85,423	683,307

\* Included in "Other States" to avoid disclosing individual operations.

<sup>1</sup> The sum of the individual diseases does not add across to the total for "Other States".

**Young Turkeys (Mature) Slaughtered: Number, Live Weight, and Average Live Weight, by State and United States, June 2002**

State	Number Slaughtered		Live Weight		Average Live Weight	
	2001	2002	2001	2002	2001	2002
	<i>1,000 Head</i>	<i>1,000 Head</i>	<i>1,000 Pounds</i>	<i>1,000 Pounds</i>	<i>Pounds</i>	<i>Pounds</i>
AR	2,393	2,790	40,965	49,124	17.12	17.61
CA	1,328	1,296	30,199	31,303	22.74	24.15
IA	1,466	1,458	44,148	44,830	30.12	30.76
MN	3,640	3,268	89,668	82,898	24.63	25.37
MO	1,778	1,684	50,701	54,829	28.51	32.56
NC	2,855	3,097	76,129	78,109	26.67	25.22
OH	*	*	*	*	*	*
PA	*	*	*	*	*	*
VA	3,076	2,134	69,287	46,589	22.52	21.83
Oth Sts	5,878	5,477	181,362	179,850	30.85	32.84
US	22,414	21,204	582,459	567,532	25.98	26.76

\* Included in "Other States" to avoid disclosing individual operations.

**Young Turkeys (Mature) Slaughtered: Pounds Certified and Post-Mortem Condemnations, by State and United States, June 2002**

State	Total Chilled and Frozen Pounds Certified <sup>1</sup>		Post-Mortem Condemnations			
			N.Y. Dressed Weight		Percent <sup>2</sup>	
	2001	2002	2001	2002	2001	2002
	<i>1,000 Pounds</i>	<i>1,000 Pounds</i>	<i>1,000 Pounds</i>	<i>1,000 Pounds</i>	<i>Percent</i>	<i>Percent</i>
AR	33,087	40,693	564	702	1.53	1.59
CA	26,366	26,117	461	477	1.70	1.69
IA	34,619	34,960	1,025	1,115	2.58	2.76
MN	70,815	66,075	2,174	1,811	2.69	2.43
MO	39,726	42,905	1,053	1,226	2.31	2.48
NC	60,212	61,176	1,272	1,171	1.86	1.67
OH	*	*	*	*	*	*
PA	*	*	*	*	*	*
VA	53,457	36,010	3,461	649	5.55	1.55
Oth Sts	142,438	140,051	3,346	2,930	2.05	1.81
US	460,720	447,987	13,356	10,081	2.55	1.97

\* Included in "Other States" to avoid disclosing individual operations.

<sup>1</sup> Ready-to-cook weights.

<sup>2</sup> Pounds condemned as percent of equivalent N.Y. dressed weight of quantity inspected.

**Turkeys Slaughtered: Number Condemned Post-Mortem by Cause, by Type,  
by State and United States, June 2002**

State	Tuber- culosis	Leukosis	Septicemia	Airsac- culitis	Synovitis	Tumors
	<i>Number of Head</i>	<i>Number of Head</i>	<i>Number of Head</i>	<i>Number of Head</i>	<i>Number of Head</i>	<i>Number of Head</i>
Young (Mature)						
AR			*	*	*	*
CA		12	*	*	5	*
IA			6,580	1,564	*	*
MN		*	15,794	*	*	*
MO			*	*	*	*
NC		*	*	*	*	*
OH		*	*	*	*	*
PA		19	*	*	*	4
VA		*	1,289	75		7
Other States		23	53,371	7,361	4,576	126
US		54	77,034	9,000	4,581	137
Old (Breeders)						
US		1	4,637	706	60	91
	<b>Bruises</b>	<b>Cadaver</b>	<b>Contam- ination</b>	<b>Overscald</b>	<b>Other</b>	<b>Total <sup>1</sup></b>
	<i>Number of Head</i>	<i>Number of Head</i>	<i>Number of Head</i>	<i>Number of Head</i>	<i>Number of Head</i>	<i>Number of Head</i>
Young (Mature)						
AR	*	965	*	*	*	*
CA	*	309	*	*	*	*
IA	75	*	360	*	*	17,268
MN	242	1,460	*	*	2,063	24,459
MO	49	*	373	*	*	16,806
NC	86	1,518	*	*	1,126	9,589
OH	*	*	*	*	*	*
PA	*	*	*	*	*	7,362
VA	14	*	*	*	*	3,527
Other States	387	6,195	6,766	2,115	18,674	54,572
US	853	10,447	7,499	2,115	21,863	133,583
Old (Breeders)						
US	21	179	164	66	1,110	7,035

\* Included in "Other States" to avoid disclosing individual operations.

<sup>1</sup> The sum of the individual diseases does not add across to the total for "Other States".

## Poultry Slaughter Estimates

**Data Sources:** Primary data for poultry slaughter estimates are obtained from the Poultry Inspection Form (FSIS 6000-21). This form is completed by inspectors of the Food Safety and Inspection Service (FSIS), USDA for all Federally Inspected (FI) plants. Over 99 percent of the total U.S. slaughter for any species is under FI. The FSIS 6000-21 forms collect number of head slaughtered daily under FI by species and class as well as condemnations and total live and dressed weights. Approximately 350 plants in the U.S. are operated under Federal Inspection.

**Revision Policy:** Revisions are generally the result of late reports received by FSIS from plants and are usually less than one-half of 1 percent of the preliminary totals. Revisions for the previous month and year-to-date totals are published in each monthly release. Final data are published in the annual summary released in April and reflect any late reports or corrections which occurred after the monthly revision were published.

**Procedures and Reliability:** Plant inspectors submit forms (FSIS 6000-21) weekly summarizing the plant's activity. When inconsistencies in the data are detected, the reports are returned to the inspectors for correction. Inspectors correct or validate the report and resubmit it. The reports cover weekly activities through Saturday night and reported data are allocated to the appropriate month as it enters the database.

A NASS computer program provides a review of current data with historical data for each plant. An edit provides checks for the detection of errors such as invalid plant information, duplication, and erroneous data. Data are summarized weekly and accumulated to monthly totals for this release.

Data for major slaughter plants with missing reports are adjusted prior to publication to assure that all plants slaughtering a significant portion of a specific class are accounted for each week. Estimates for missing weeks are made only after verifying that the plant was in operation. Adjustments are based on either the previous week's information or a week determined to be similar to the one missing. Late reports replace imputed data as they become available. While there is a varying degree of incompleteness from month to month, it has only a minimal impact on the published totals.

Poultry slaughter estimates are based on a census of operating plants and, therefore, have no sampling error. However, they may be subject to errors such as omissions, duplications, and mistakes in reporting, recording, and processing the data. These errors are minimized through strict quality controls in the edit and summarization process, and a careful review of all reported data for consistency and reasonableness.

State data are published for selected states for young chickens and young turkeys. State data are not published if less than three plants operate for a species in a State, or if one plant has 60 percent or more of the total live weight for that species. Data for all states not published are included in the "Other States" category. Also included in this category are data for published states that are confidential (denoted by an \*). Data for all states are included in the U.S. totals. For 2001, young chickens were killed in 31 states, young turkeys in 21 states.



## Definitions

**Ante-Mortem Condemnations** - Birds condemned prior to their entry into the slaughter plant.

**Certified Ready-to-Cook** - The weight of poultry certified wholesome by inspection after post-mortem condemnation pounds are removed. Ready-to-cook represents poultry meat ready for the marketing channel.

**Ducks** - Includes all ducks regardless of age and weight.

**Fryer-Roaster Turkeys** - Young immature birds, usually under 16 weeks of age. Included with young turkeys.

**Mature Chickens** - Fowl from breeder and market egg flocks and stags and cocks.

**New York Dressed Weight** - Carcass weight after only feathers and blood are removed. This weight is approximately 90% of live weight.

**Old Turkeys (Breeders)** - Fully matured birds held for egg production, usually over 15 months of age.

**Other Poultry** - Includes all other ready-to-cook products which bear the USDA Inspected for Wholesomeness legend.

**Post-Mortem Condemnations** - Carcasses or parts condemned by the inspector because of disease or mishandling and removed from the slaughter line and destroyed.

**Young Chickens** - Commercially grown broilers-fryers and other young immature birds such as roasters and capons.

**Young Turkeys (Mature)** - Young birds grown to a matured market age, about 5 months.

**The next "Poultry Slaughter" report will be released at 3 p.m. ET on September 6, 2002.**

The United States Department of Agriculture (USDA) prohibits discrimination in all its programs on the basis of race, color, national origin, gender, religion, age, disability, political beliefs, sexual orientation, and marital or family status. (Not all prohibited bases apply to all programs.) Persons with disabilities who require alternative means for communication of program information (braille, large print, audiotape, etc.) should contact the USDA's TARGET Center at 202-720-2600 (voice and TDD).

To file a complaint of discrimination, write USDA, Director, Office of Civil Rights, Room 326-W, Whitten Building, 1400 Independence Avenue, SW, Washington, D.C., 20250-9410, or call 202-720-5964 (voice or TDD). USDA is an equal opportunity provider and employer.

## **ACCESS TO REPORTS!!**

---

For your convenience, there are several ways to obtain NASS reports, data products, and services:

### **INTERNET ACCESS**

All NASS reports are available free of charge on the worldwide Internet. For access, connect to the Internet and go to the NASS Home Page at: <http://www.usda.gov/nass/>. Select "Today's Reports" or Publications and then Reports by Calendar or Publications and then Search, by Title or Subject.

### **E-MAIL SUBSCRIPTION**

There are two options for subscribing via e-mail. All NASS reports are available by subscription free of charge direct to your e-mail address. 1) Starting with the NASS Home Page at <http://www.usda.gov/nass/>, click on **Publications**, then click on the **Subscribe by E-mail** button which takes you to the page describing e-mail delivery of reports. Finally, click on **Go to the Subscription Page** and follow the instructions. 2) If you do NOT have Internet access, send an e-mail message to: [usda-reports@usda.mannlib.cornell.edu](mailto:usda-reports@usda.mannlib.cornell.edu). In the body of the message type the word: **list**.

### **AUTOFAX ACCESS**

NASSFax service is available for some reports from your fax machine. Please call 202-720-2000, using the handset attached to your fax. Respond to the voice prompts. Document 0411 is a list of available reports.

-----  
**PRINTED REPORTS OR DATA PRODUCTS**

**CALL OUR TOLL-FREE ORDER DESK: 800-999-6779 (U.S. and Canada)**  
**Other areas, please call 703-605-6220      FAX: 703-605-6900**  
**(Visa, MasterCard, check, or money order acceptable for payment.)**

-----

### **ASSISTANCE**

For **assistance** with general agricultural statistics or further information about NASS or its products or services, contact the **Agricultural Statistics Hotline** at **800-727-9540**, 7:30 a.m. to 4:00 p.m. ET, or e-mail: [nass@nass.usda.gov](mailto:nass@nass.usda.gov).

---