



Poultry Slaughter

Released May 2, 2003, by the National Agricultural Statistics Service (NASS), Agricultural Statistics Board, U.S. Department of Agriculture. For information on "Poultry Slaughter" call John Lange at 202-720-0585, office hours 7:00 a.m. to 4:30 p.m. ET.

Ready-to-Cook Weight Down 1 Percent

Poultry certified wholesome during March 2003 (ready-to-cook weight) totaled 3.07 billion pounds, down 1 percent from the amount certified in March 2002. Updated totals for February 2003 show that 2.89 billion pounds were certified.

The preliminary total live weight of poultry inspected during March 2003 was 4.13 billion pounds, down 1 percent from a year ago. Young chickens inspected totaled 3.46 billion pounds, down 2 percent from March 2002, and mature chickens at 67.7 million pounds, were down 5 percent from the previous year. Turkey inspections totaled 594 million pounds, up 4 percent, and ducks totaled 12.9 million pounds, down 8 percent.

Young chickens slaughtered during March 2003 averaged 5.13 pounds per bird, up 1 percent from March 2002. The average live weight of mature chickens was 5.39 pounds per bird, up 4 percent from a year ago. Turkeys slaughtered during March 2003 averaged 27.5 pounds per bird, up 1 percent from March 2002.

Ante-mortem condemnations during March 2003 totaled 17.0 million pounds. Condemnations were 0.41 percent of the live weight inspected, compared to 0.46 percent a year earlier. Post-mortem condemnations, at 46.6 million pounds (N.Y. dressed weight), were 1.25 percent of quantities inspected, compared with 1.32 percent a year earlier.

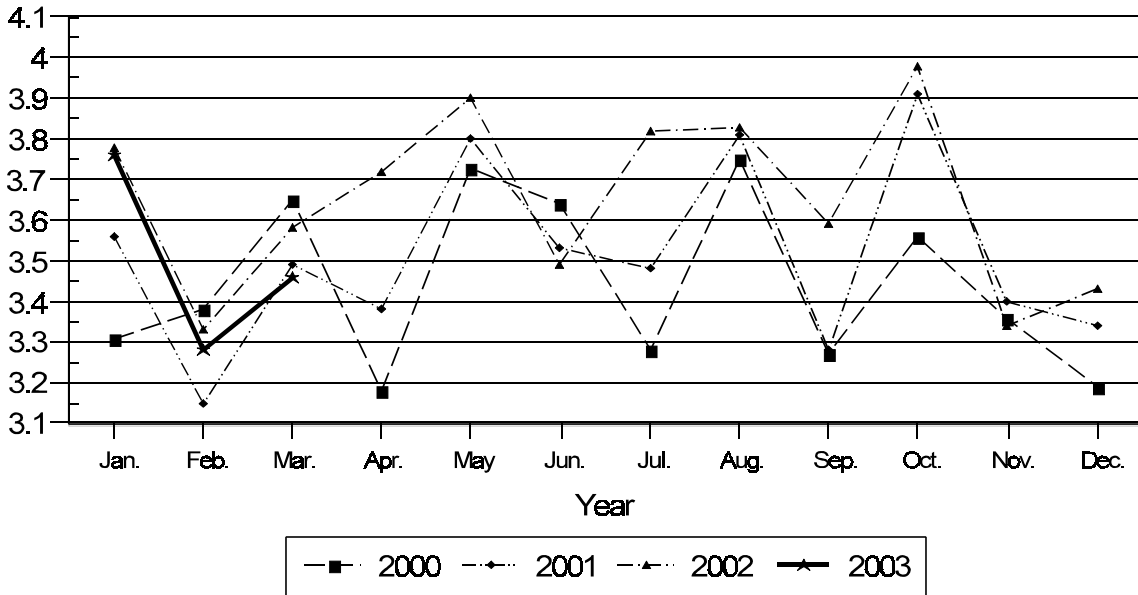
March 2003 contained 21 weekdays and five Saturdays. The same as March 2002.

Contents

	Page
Poultry Slaughter: Number, Live Weight, and Average Live Weight by Type, United States, March 2003	4
Poultry Slaughter: Chilled and Frozen, Pounds Certified by Type, United States, March 2003	6
Poultry Slaughter: Ante-Mortem Condemnations by Type, United States, March 2003	8
Poultry Slaughter: Post-Mortem Condemnations by Type, United States, March 2003	9
Young Chickens Slaughtered: Number, Live Weight, and Average Live Weight, by State and United States, March 2003	10
Young Chickens Slaughtered: Pounds Certified and Post-Mortem Condemnations, by State and United States, March 2003	11
Young Chickens Slaughtered: Number Condemned Post-Mortem by Cause, by Type, by State and United States, February 2003	12
Young Chickens Slaughtered: Number Condemned Post-Mortem by Cause, by Type, by State and United States, March 2003	14
Young Turkeys (Mature) Slaughtered: Number, Live Weight, and Average Live Weight, by State and United States, March 2003	16
Young Turkeys (Mature) Slaughtered: Pounds Certified and Post-Mortem Condemnations, by State and United States, March 2003	16
Young Turkeys Slaughtered: Number Condemned Post-Mortem by Cause, by Type, by State and United States, February 2003	17
Young Turkeys Slaughtered: Number Condemned Post-Mortem by Cause, by Type, by State and United States, March 2003	18
Reliability Statement	19
Definitions	20

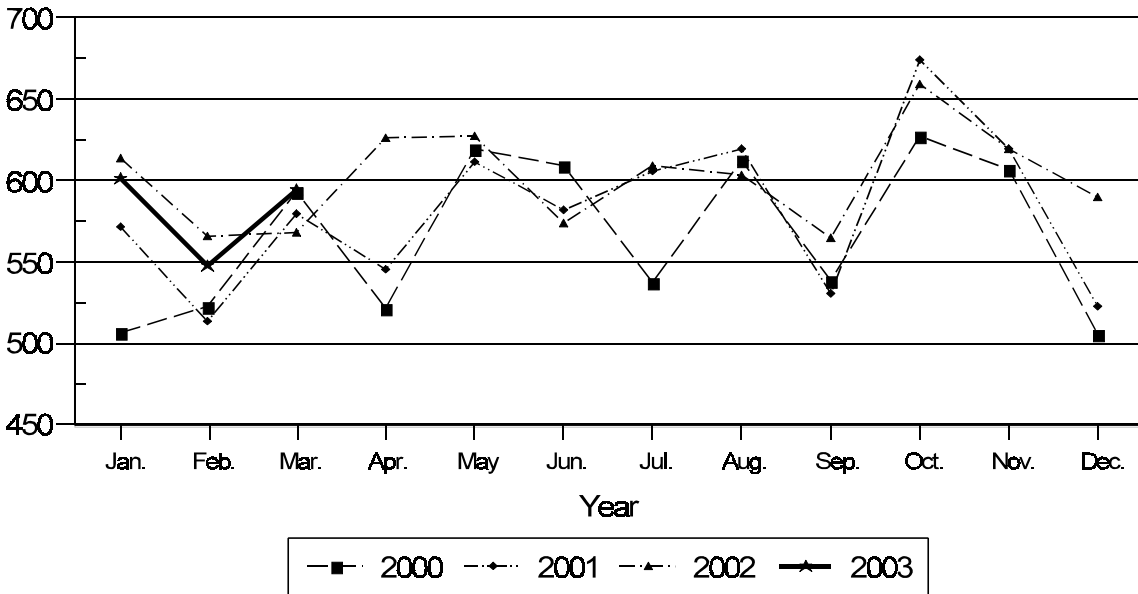
Young Chickens: Live Weight Slaughtered, by Month, 2000-2003

Billion Pounds



Young Turkeys: Live Weight Slaughtered, by Month, 2000-2003

Million Pounds



**Poultry Slaughter: Number, Live Weight, and Average Live Weight by Type,
United States, March 2003¹**

Commodity	Mar 2002	Feb 2003	Mar 2003	Percent of	
				Mar 2002	Feb 2003
	<i>1,000 Head</i>	<i>1,000 Head</i>	<i>1,000 Head</i>	<i>Percent</i>	<i>Percent</i>
Number Slaughtered					
Chickens					
Young	688,598	632,117	673,097	98	106
Mature	13,854	12,201	12,556	91	103
Light	8,378	6,815	6,963	83	102
Heavy	5,476	5,386	5,593	102	104
Total	702,452	644,318	685,653	98	106
Turkeys					
Young	20,725	19,975	21,429	103	107
Old	138	178	189	137	106
Total	20,863	20,153	21,618	104	107
Ducks	2,064	1,992	1,964	95	99
	<i>1,000 pounds</i>	<i>1,000 pounds</i>	<i>1,000 pounds</i>	<i>Percent</i>	<i>Percent</i>
Live Weight					
Chickens					
Young	3,514,073	3,276,278	3,455,479	98	105
Mature	71,498	65,333	67,734	95	104
Light	28,463	22,700	23,584	83	104
Heavy	43,035	42,633	44,150	103	104
Total	3,585,571	3,341,611	3,523,213	98	105
Turkeys					
Young	564,137	542,851	588,295	104	108
Old	3,867	4,960	5,217	135	105
Total	568,004	547,811	593,512	104	108
Ducks	13,956	12,921	12,860	92	100
Other Poultry	687	684	771	112	113
Total Poultry	4,168,218	3,903,027	4,130,356	99	106
	<i>Pounds</i>	<i>Pounds</i>	<i>Pounds</i>	<i>Percent</i>	<i>Percent</i>
Average Live Weight					
Chickens					
Young	5.10	5.18	5.13	101	99
Mature	5.16	5.35	5.39	104	101
Light	3.40	3.33	3.39	100	102
Heavy	7.86	7.92	7.89	100	100
Total	5.10	5.19	5.14	101	99
Turkeys					
Young	27.22	27.17	27.45	101	101
Old	27.94	27.89	27.55	99	99
Total	27.23	27.18	27.45	101	101
Ducks	6.76	6.49	6.55	97	101

See footnote(s) at end of table.

--continued

**Poultry Slaughter: Number, Live Weight, and Average Live Weight by Type,
United States, March 2003 ¹ (continued)**

Commodity	January to Date			Percent of	
	2001	2002	2003	2001	2002
	<i>1,000 Head</i>	<i>1,000 Head</i>	<i>1,000 Head</i>	<i>Percent</i>	<i>Percent</i>
Number Slaughtered					
Chickens					
Young	2,038,879	2,082,048	2,030,407	100	98
Mature	41,035	43,031	39,119	95	91
Light	24,543	26,379	22,002	90	83
Heavy	16,492	16,652	17,117	104	103
Total	2,079,914	2,125,079	2,069,526	100	97
Turkeys					
Young	61,917	62,790	62,746	101	100
Old	454	526	686	151	130
Total	62,371	63,316	63,432	102	100
Ducks	6,456	6,048	6,091	94	101
	<i>1,000 pounds</i>	<i>1,000 pounds</i>	<i>1,000 pounds</i>	<i>Percent</i>	<i>Percent</i>
Live Weight					
Chickens					
Young	10,233,500	10,629,696	10,495,270	103	99
Mature	212,080	220,077	208,310	98	95
Light	83,943	89,710	74,283	88	83
Heavy	128,137	130,367	134,027	105	103
Total	10,445,580	10,849,773	10,703,580	102	99
Turkeys					
Young	1,671,082	1,737,453	1,731,648	104	100
Old	12,292	14,801	18,808	153	127
Total	1,683,374	1,752,254	1,750,456	104	100
Ducks	42,673	40,990	40,045	94	98
Other Poultry	2,520	2,085	2,345	93	112
Total Poultry	12,174,147	12,645,102	12,496,426	103	99
	<i>Pounds</i>	<i>Pounds</i>	<i>Pounds</i>	<i>Percent</i>	<i>Percent</i>
Average Live Weight					
Chickens					
Young	5.02	5.11	5.17	103	101
Mature	5.17	5.11	5.33	103	104
Light	3.42	3.40	3.38	99	99
Heavy	7.77	7.83	7.83	101	100
Total	5.02	5.11	5.17	103	101
Turkeys					
Young	26.99	27.67	27.60	102	100
Old	27.07	28.15	27.42	101	97
Total	26.99	27.68	27.60	102	100
Ducks	6.61	6.78	6.57	99	97

¹ Federally inspected only.

**Poultry Slaughter: Chilled and Frozen, Pounds Certified by Type,
United States, March 2003 ¹**

Commodity	Mar 2002	Feb 2003	Mar 2003	Percent of	
				Mar 2002	Feb 2003
	<i>1,000 Pounds</i>	<i>1,000 Pounds</i>	<i>1,000 Pounds</i>	<i>Percent</i>	<i>Percent</i>
Chilled					
Chickens					
Young	2,361,025	2,184,403	2,306,024	98	106
Mature	41,303	38,584	40,173	97	104
Light	13,263	10,965	11,221	85	102
Heavy	28,040	27,619	28,952	103	105
Total	2,402,328	2,222,987	2,346,197	98	106
Turkeys					
Young	222,219	216,174	245,454	110	114
Old	2,325	3,158	3,410	147	108
Total	224,544	219,332	248,864	111	113
Ducks	3,852	3,073	2,971	77	97
Other Poultry	200	172	159	80	92
Total Poultry	2,630,924	2,445,564	2,598,191	99	106
Frozen					
Chickens					
Young	224,044	225,431	244,451	109	108
Mature	1,516	810	951	63	117
Light	1,395	563	781	56	139
Heavy	121	247	170	140	69
Total	225,560	226,241	245,402	109	108
Turkeys					
Young	221,984	210,938	218,709	99	104
Old	636	489	417	66	85
Total	222,620	211,427	219,126	98	104
Ducks	6,555	6,088	5,994	91	98
Other Poultry	223	260	295	132	113
Total Poultry	454,958	444,016	470,817	103	106
Total Chilled and Frozen					
Chickens					
Young	2,585,069	2,409,834	2,550,475	99	106
Mature	42,819	39,394	41,124	96	104
Light	14,658	11,528	12,002	82	104
Heavy	28,161	27,866	29,122	103	105
Total	2,627,888	2,449,228	2,591,599	99	106
Turkeys					
Young	444,203	427,112	464,163	104	109
Old	2,961	3,647	3,827	129	105
Total	447,164	430,759	467,990	105	109
Ducks	10,407	9,161	8,965	86	98
Other Poultry	423	432	454	107	105
Total Poultry	3,085,882	2,889,580	3,069,008	99	106

See footnote(s) at end of table.

--continued

**Poultry Slaughter: Chilled and Frozen, Pounds Certified by Type,
United States, March 2003¹ (continued)**

Commodity	January to Date			Percent of	
	2001	2002	2003	2001	2002
	<i>1,000 Pounds</i>	<i>1,000 Pounds</i>	<i>1,000 Pounds</i>	<i>Percent</i>	<i>Percent</i>
Chilled					
Chickens					
Young	6,879,691	7,123,731	6,996,626	102	98
Mature	124,354	127,623	123,056	99	96
Light	40,988	42,978	35,666	87	83
Heavy	83,366	84,645	87,390	105	103
Total	7,004,045	7,251,354	7,119,682	102	98
Turkeys					
Young	658,009	673,379	719,208	109	107
Old	7,835	9,200	12,067	154	131
Total	665,844	682,579	731,275	110	107
Ducks	11,743	11,544	9,735	83	84
Other Poultry	605	568	514	85	90
Total Poultry	7,682,237	7,946,045	7,861,206	102	99
Frozen					
Chickens					
Young	653,302	694,814	738,544	113	106
Mature	2,392	3,979	2,672	112	67
Light	1,943	3,380	2,073	107	61
Heavy	449	599	599	133	100
Total	655,694	698,793	741,216	113	106
Turkeys					
Young	664,957	693,532	645,633	97	93
Old	1,687	2,006	1,680	100	84
Total	666,644	695,538	647,313	97	93
Ducks	19,018	19,434	18,750	99	96
Other Poultry	853	721	908	106	126
Total Poultry	1,342,209	1,414,486	1,408,187	105	100
Total Chilled and Frozen					
Chickens					
Young	7,532,993	7,818,545	7,735,170	103	99
Mature	126,746	131,602	125,728	99	96
Light	42,931	46,358	37,739	88	81
Heavy	83,815	85,244	87,989	105	103
Total	7,659,739	7,950,147	7,860,898	103	99
Turkeys					
Young	1,322,966	1,366,911	1,364,841	103	100
Old	9,522	11,206	13,747	144	123
Total	1,332,488	1,378,117	1,378,588	103	100
Ducks	30,761	30,978	28,485	93	92
Other Poultry	1,458	1,289	1,422	98	110
Total Poultry	9,024,446	9,360,531	9,269,393	103	99

¹ Ready-to-cook weights.

**Poultry Slaughter: Ante-Mortem Condemnations by Type,
United States, March 2003 ¹**

Commodity	Mar 2002	Feb 2003	Mar 2003	Percent of		January to Date		Percent of 2002
				Mar 2002	Feb 2003	2002	2003	
	<i>1,000 Pounds</i>	<i>1,000 Pounds</i>	<i>1,000 Pounds</i>	<i>Percent</i>	<i>Percent</i>	<i>1,000 Pounds</i>	<i>1,000 Pounds</i>	<i>Percent</i>
Live Weight								
Chickens								
Young	16,020	13,545	12,982	81	96	46,334	45,523	98
Mature	1,234	1,034	853	69	82	3,652	3,065	84
Light	477	513	508	106	99	1,583	1,706	108
Heavy	757	521	345	46	66	2,069	1,359	66
Total	17,254	14,579	13,835	80	95	49,986	48,588	97
Turkeys								
Young	1,617	2,031	3,078	190	152	5,221	7,272	139
Old	50	114	108	216	95	157	491	313
Total	1,667	2,145	3,186	191	149	5,378	7,763	144
Ducks	50	23	21	42	91	138	79	57
Other Poultry	3	4	2	67	50	6	8	133
Total Poultry	18,974	16,751	17,044	90	102	55,508	56,438	102
	<i>Percent</i>	<i>Percent</i>	<i>Percent</i>	<i>Percent</i>	<i>Percent</i>	<i>Percent</i>	<i>Percent</i>	<i>Percent</i>
Percent of Total Weight Condemned ²								
Chickens								
Young	0.46	0.41	0.38	83	93	0.44	0.43	98
Mature	1.73	1.58	1.26	73	80	1.66	1.47	89
Light	1.68	2.26	2.15	128	95	1.76	2.30	131
Heavy	1.76	1.22	0.78	44	64	1.59	1.01	64
Total	0.48	0.44	0.39	81	89	0.46	0.45	98
Turkeys								
Young	0.29	0.37	0.52	179	141	0.30	0.42	140
Old	1.28	2.30	2.11	165	92	1.06	2.61	246
Total	0.29	0.39	0.54	186	138	0.31	0.44	142
Ducks	0.36	0.17	0.16	44	94	0.33	0.20	61
Other Poultry	0.48	0.58	0.34	71	59	0.29	0.34	117
Total Poultry	0.46	0.43	0.41	89	95	0.44	0.45	102

¹ Federally inspected only.

² Pounds condemned as a percent of live weight pounds inspected.

**Poultry Slaughter: Post-Mortem Condemnations by Type,
United States, March 2003 ¹**

Commodity	Mar 2002	Feb 2003	Mar 2003	Percent of		January to Date		Percent of 2002
				Mar 2002	Feb 2003	2002	2003	
				<i>1,000 Pounds</i>	<i>1,000 Pounds</i>	<i>1,000 Pounds</i>	<i>Percent</i>	
N.Y. Dressed Weight								
Chickens								
Young	35,337	28,610	31,105	88	109	105,888	94,754	89
Mature	3,252	3,667	3,593	110	98	11,110	11,849	107
Light	1,811	2,009	2,011	111	100	6,336	6,559	104
Heavy	1,441	1,658	1,582	110	95	4,774	5,290	111
Total	38,589	32,277	34,698	90	108	116,998	106,603	91
Turkeys								
Young	10,537	9,725	11,219	106	115	32,462	31,815	98
Old	295	382	438	148	115	1,037	1,399	135
Total	10,832	10,107	11,657	108	115	33,499	33,214	99
Ducks	255	273	274	107	100	751	831	111
Other Poultry	8	10	16	200	160	24	40	167
Total Poultry	49,684	42,667	46,645	94	109	151,272	140,688	93
	<i>Percent</i>	<i>Percent</i>	<i>Percent</i>	<i>Percent</i>	<i>Percent</i>	<i>Percent</i>	<i>Percent</i>	<i>Percent</i>
Percent of Total Weight Condemned ²								
Chickens								
Young	1.12	0.97	1.00	89	103	1.11	1.00	90
Mature	5.05	6.24	5.89	117	94	5.61	6.32	113
Light	7.07	9.84	9.47	134	96	7.85	9.81	125
Heavy	3.72	4.32	3.98	107	92	4.07	4.39	108
Total	1.20	1.07	1.09	91	102	1.20	1.11	93
Turkeys								
Young	2.08	1.99	2.12	102	107	2.08	2.04	98
Old	8.47	8.57	9.35	110	109	7.79	8.26	106
Total	2.12	2.05	2.18	103	106	2.12	2.11	100
Ducks	2.03	2.34	2.37	117	101	2.03	2.31	114
Other Poultry	1.36	1.77	2.54	187	144	1.35	1.90	141
Total Poultry	1.32	1.21	1.25	95	103	1.33	1.25	94

¹ Federally inspected only.

² Pounds condemned as a percent of N.Y. dressed weight of quantity inspected.

**Young Chickens Slaughtered: Number, Live Weight, and Average Live Weight,
by State and United States, March 2003**

State	Number Slaughtered		Live Weight		Average Live Weight	
	February	March	February	March	February	March
	<i>1,000 Head</i>	<i>1,000 Head</i>	<i>1,000 Pounds</i>	<i>1,000 Pounds</i>	<i>Pounds</i>	<i>Pounds</i>
AL	75,505	79,747	387,754	407,888	5.14	5.11
AR	84,465	91,447	414,832	450,581	4.91	4.93
CA	*	*	*	*	*	*
DE	19,486	21,504	118,890	128,485	6.10	5.97
FL	8,944	9,648	49,274	54,677	5.51	5.67
GA	90,702	98,151	459,704	487,165	5.07	4.96
KY	19,071	18,089	99,542	98,478	5.22	5.44
LA	13,583	15,577	71,580	79,928	5.27	5.13
MD	14,397	15,743	68,057	74,470	4.73	4.73
MS	56,460	58,333	299,863	310,087	5.31	5.32
MO	29,258	29,727	139,382	135,130	4.76	4.55
NJ	*	*	*	*	*	*
NY	*	*	*	*	*	*
NC	51,942	50,858	310,400	303,354	5.98	5.96
OH	2,741	3,006	15,554	17,524	5.67	5.83
PA	7,928	8,460	42,006	44,008	5.30	5.20
SC	17,340	20,078	99,739	115,615	5.75	5.76
TN	16,398	16,806	88,223	85,354	5.38	5.08
TX	47,673	51,810	236,071	254,610	4.95	4.91
VA	24,493	26,690	118,915	129,689	4.86	4.86
WA	*	*	*	*	*	*
Oth Sts	51,731	57,423	256,492	278,436	4.96	4.85
US	632,117	673,097	3,276,278	3,455,479	5.18	5.13

* Included in "Other States" to avoid disclosing individual operations.

**Young Chickens Slaughtered: Pounds Certified and Post-Mortem Condemnations
by State and United States, March 2003**

State	Total Chilled and Frozen Pounds Certified ¹		Post-Mortem Condemnations			
			N.Y. Dressed Weight		Percent ²	
	February	March	February	March	February	March
	<i>1,000 Pounds</i>	<i>1,000 Pounds</i>	<i>1,000 Pounds</i>	<i>1,000 Pounds</i>	<i>Percent</i>	<i>Percent</i>
AL	283,136	297,733	3,477	3,413	1.00	0.93
AR	297,867	325,932	3,836	4,258	1.03	1.05
CA	*	*	*	*	*	*
DE	85,539	93,901	1,897	1,985	1.77	1.72
FL	35,124	37,899	561	590	1.26	1.20
GA	335,294	354,685	3,090	3,275	0.75	0.75
KY	73,909	70,180	699	702	0.78	0.79
LA	51,677	58,916	387	431	0.60	0.60
MD	48,815	52,645	1,000	1,026	1.63	1.53
MS	223,348	235,395	1,663	2,301	0.62	0.82
MO	102,079	98,718	1,234	1,405	0.98	1.16
NJ	*	*	*	*	*	*
NY	*	*	*	*	*	*
NC	242,908	236,196	3,286	3,769	1.18	1.38
OH	11,070	12,336	368	347	2.63	2.20
PA	29,074	31,212	796	791	2.11	2.00
SC	73,632	85,030	628	622	0.70	0.60
TN	64,605	61,787	650	1,140	0.82	1.48
TX	182,567	198,038	1,890	1,909	0.89	0.83
VA	86,340	93,149	996	1,118	0.93	0.96
WA	*	*	*	*	*	*
Oth Sts	182,850	206,723	2,152	2,023	0.93	0.81
US	2,409,834	2,550,475	28,610	31,105	0.97	1.00

* Included in "Other States" to avoid disclosing individual operations.

¹ Ready-to-cook weights.

² Pounds condemned as percent of equivalent N.Y. dressed weight of quantity inspected.

**Chickens Slaughtered: Number Condemned Post-Mortem by Cause, by Type,
by State and United States, February 2003**

State	Tuber- culosis	Leukosis	Septicemia	Airsac- culitis	Synovitis	Tumors
	<i>Number of Head</i>	<i>Number of Head</i>	<i>Number of Head</i>	<i>Number of Head</i>	<i>Number of Head</i>	<i>Number of Head</i>
Young Birds						
AL		*	109,950	74,884	1,189	*
AR		4,414	192,004	110,427	4,307	2,837
CA		1,251	*	4,351	*	733
DE		3,959	98,978	40,828	*	*
FL		85	*	*	*	*
GA		352	79,490	86,947	271	4,606
IN		20	*	*	*	*
KY		*	27,735	*	47	*
LA		*	14,716	9,964	*	169
MD		2,057	57,300	41,550	*	5,427
MS		150	55,574	39,664	399	1,160
MO		1,077	104,269	*	620	*
NJ		*	*	*	4	*
NY		208	*	*	154	*
NC		*	93,741	73,203	57	*
OH		*	19,482	*	*	*
PA		*	23,084	20,360	216	*
SC		68	17,624	*	12	942
TN		*	39,120	11,512	161	738
TX		57	126,365	60,006	*	2,218
VA		*	46,002	27,525	30	*
WA		*	*	*	*	*
Oth Sts		9,440	187,847	119,261	2,455	72,642
US		23,138	1,293,281	722,090	9,922	91,472
Mature Birds						
Light	1	2,446	185,602	18,134	888	76,703
Heavy	28	1,541	70,905	3,991	429	8,951
US	29	3,987	256,507	22,125	1,317	85,654

See footnote(s) at end of table.

--continued

**Chickens Slaughtered: Number Condemned Post-Mortem by Cause, by Type,
by State and United States, February 2003 (continued)**

	Bruises	Cadaver	Contam- ination	Overscald	Other	Total ¹
	<i>Number of Head</i>	<i>Number of Head</i>	<i>Number of Head</i>	<i>Number of Head</i>	<i>Number of Head</i>	<i>Number of Head</i>
Young Birds						
AL	3,973	21,029	22,362	6,428	89,517	336,045
AR	6,319	20,645	26,882	3,609	41,447	412,891
CA	202	*	1,677	803	3,626	109,943
DE	2,152	12,463	8,634	2,912	19,176	196,518
FL	*	3,490	*	365	15,858	57,022
GA	3,188	30,876	14,044	2,320	87,436	309,530
IN	*	*	*	*	*	15,941
KY	163	8,315	*	468	5,482	70,508
LA	398	2,760	4,103	*	*	35,573
MD	1,673	20,289	*	1,458	18,686	169,344
MS	2,572	12,504	8,198	237	45,515	165,973
MO	1,151	12,535	10,677	918	29,196	211,619
NJ	*	*	*	*	*	*
NY	551	*	2,984	*	*	*
NC	3,630	24,008	15,845	5,066	75,144	310,457
OH	184	*	952	*	*	37,215
PA	1,093	3,450	4,818	133	*	74,710
SC	*	*	1,643	2,179	*	53,952
TN	922	9,247	4,086	*	*	80,809
TX	1,051	7,251	8,611	*	17,476	224,401
VA	1,404	9,723	*	*	17,207	139,399
WA	*	*	*	*	*	*
Oth Sts	4,496	22,898	78,305	6,906	92,144	190,191
US	35,122	221,483	213,821	33,802	557,910	3,202,041
Mature Birds						
Light	14,098	19,685	154,363	1,787	69,211	542,918
Heavy	2,011	22,528	22,048	1,974	49,837	184,243
US	16,109	42,213	176,411	3,761	119,048	727,161

* Included in "Other States" to avoid disclosing individual operations.

¹ The sum of the individual diseases does not add across to the total for "Other States".

**Chickens Slaughtered: Number Condemned Post-Mortem by Cause, by Type,
by State and United States, March 2003**

State	Tuber- culosis	Leukosis	Septicemia	Airsac- culitis	Synovitis	Tumors
	<i>Number of Head</i>	<i>Number of Head</i>	<i>Number of Head</i>	<i>Number of Head</i>	<i>Number of Head</i>	<i>Number of Head</i>
Young Birds						
AL		*	107,962	53,938	1,376	*
AR		3,839	207,851	122,611	4,004	2,858
CA		1,329	*	3,915	236	933
DE		6,311	92,247	42,660	*	*
FL		104	*	*	*	*
GA		378	86,774	81,107	233	5,554
IN		16	6,825	*	*	127
KY		*	30,332	*	64	*
LA		*	15,452	10,290	128	263
MD		4,368	62,432	36,204	*	*
MS		209	66,274	38,356	435	1,089
MO		1,048	105,980	*	623	*
NJ		*	*	*	*	*
NY		249	*	*	*	*
NC		620	88,385	53,091	*	*
OH		*	20,918	*	*	*
PA		255	21,702	18,064	228	511
SC		*	16,817	13,784	14	940
TN		*	44,040	12,669	216	*
TX		*	136,744	57,265	486	2,383
VA		*	49,928	23,905	*	*
WA		*	*	*	*	*
Oth Sts		3,060	177,359	143,480	2,333	57,153
US		21,850	1,338,022	711,339	10,376	71,811
Mature Birds						
Light		2,236	171,466	14,330	194	72,586
Heavy		996	72,586	3,516	202	9,474
US		3,232	244,052	17,846	396	82,060

See footnote(s) at end of table.

--continued

**Chickens Slaughtered: Number Condemned Post-Mortem by Cause, by Type,
by State and United States, March 2003 (continued)**

	Bruises	Cadaver	Contam- ination	Overscald	Other	Total ¹
	<i>Number of Head</i>	<i>Number of Head</i>	<i>Number of Head</i>	<i>Number of Head</i>	<i>Number of Head</i>	<i>Number of Head</i>
Young Birds						
AL	4,286	22,451	21,194	7,539	85,871	310,394
AR	7,063	18,494	27,555	2,807	47,209	444,291
CA	222	*	1,723	*	3,100	*
DE	2,369	12,146	11,010	*	24,569	205,501
FL	*	3,405	*	495	13,958	52,344
GA	3,517	33,323	20,794	3,492	83,389	318,561
IN	64	*	*	*	*	13,713
KY	173	7,823	*	*	4,718	69,849
LA	335	2,948	2,458	*	2,363	35,310
MD	1,956	19,165	*	2,671	20,189	178,373
MS	2,980	10,294	8,937	431	56,658	185,663
MO	1,180	12,069	12,850	*	33,859	270,027
NJ	*	*	*	*	*	*
NY	*	*	2,643	*	*	*
NC	3,328	18,788	16,523	4,030	52,620	256,996
OH	*	*	*	*	*	37,793
PA	1,101	*	4,616	99	*	67,272
SC	*	4,225	1,884	4,098	5,322	48,249
TN	881	7,267	3,655	*	*	88,045
TX	1,131	7,356	9,804	*	17,370	233,407
VA	1,392	10,297	*	*	17,012	126,214
WA	*	*	*	*	*	*
Oth Sts	5,839	16,784	79,950	16,113	71,890	263,516
US	37,817	206,835	225,596	41,775	540,097	3,205,518
Mature Birds						
Light	14,797	26,040	154,823	1,006	127,285	584,763
Heavy	1,953	14,651	23,132	1,747	66,065	194,322
US	16,750	40,691	177,955	2,753	193,350	779,085

* Included in "Other States" to avoid disclosing individual operations.

¹ The sum of the individual diseases does not add across to the total for "Other States".

Young Turkeys (Mature) Slaughtered: Number, Live Weight, and Average Live Weight, by State and United States, March 2003

State	Number Slaughtered		Live Weight		Average Live Weight	
	February	March	February	March	February	March
	<i>1,000 Head</i>	<i>1,000 Head</i>	<i>1,000 Pounds</i>	<i>1,000 Pounds</i>	<i>Pounds</i>	<i>Pounds</i>
AR	2,756	2,658	49,269	49,606	17.88	18.66
CA	*	*	*	*	*	*
IA	1,317	1,469	40,186	48,507	30.51	33.03
MN	2,440	2,793	67,889	79,542	27.82	28.47
MO	1,558	1,658	48,547	51,298	31.17	30.94
NC	3,222	3,382	84,223	84,855	26.14	25.09
OH	*	*	*	*	*	*
PA	*	*	*	*	*	*
VA	*	*	*	*	*	*
Oth Sts	8,682	9,469	252,737	274,487	29.11	28.99
US	19,975	21,429	542,851	588,295	27.17	27.45

* Included in "Other States" to avoid disclosing individual operations.

Young Turkeys (Mature) Slaughtered: Pounds Certified and Post-Mortem Condemnations, by State and United States, March 2003

State	Total Chilled and Frozen Pounds Certified ¹		Post-Mortem Condemnations			
			N.Y. Dressed Weight		Percent ²	
	February	March	February	March	February	March
	<i>1,000 Pounds</i>	<i>1,000 Pounds</i>	<i>1,000 Pounds</i>	<i>1,000 Pounds</i>	<i>Percent</i>	<i>Percent</i>
AR	41,276	41,352	739	788	1.67	1.76
CA	*	*	*	*	*	*
IA	27,889	38,107	872	1,192	2.41	2.73
MN	54,204	60,921	1,335	1,583	2.18	2.21
MO	37,918	40,025	1,092	1,191	2.50	2.58
NC	66,760	67,791	1,177	1,085	1.55	1.42
OH	*	*	*	*	*	*
PA	*	*	*	*	*	*
VA	*	*	*	*	*	*
Oth Sts	199,065	215,967	4,510	5,380	1.98	2.18
US	427,112	464,163	9,725	11,219	1.99	2.12

* Included in "Other States" to avoid disclosing individual operations.

¹ Ready-to-cook weights.

² Pounds condemned as percent of equivalent N.Y. dressed weight of quantity inspected.

**Turkeys Slaughtered: Number Condemned Post-Mortem by Cause, by Type,
by State and United States, February 2003**

State	Tuber- culosis	Leukosis	Septicemia	Airsac- culitis	Synovitis	Tumors
	<i>Number of Head</i>	<i>Number of Head</i>	<i>Number of Head</i>	<i>Number of Head</i>	<i>Number of Head</i>	<i>Number of Head</i>
Young (Mature)						
AR		*	*	*	*	2
CA		*	*	*	*	*
IA			6,796	1,433	*	*
MN		*	15,921	2,434	*	*
MO			17,211	*		
NC		*	*	*	7	*
OH			*	*	*	
PA		*	*	530	*	*
VA		*	*	*	*	*
Other States		774	51,177	8,847	4,461	133
US		774	91,105	13,244	4,468	135
Old (Breeders)						
US		46	7,377	891	21	74
	Bruises	Cadaver	Contam- ination	Overscald	Other	Total ¹
	<i>Number of Head</i>	<i>Number of Head</i>	<i>Number of Head</i>	<i>Number of Head</i>	<i>Number of Head</i>	<i>Number of Head</i>
Young (Mature)						
AR	*	545	*	*	*	*
CA	*	*	*	6	*	*
IA	98	421	583	75	305	11,414
MN	65	581	476	531	1,285	22,357
MO	38	*	345	*	*	19,932
NC	235	1,219	*	*	2,130	11,691
OH	*	*	*	*	*	*
PA	*	*	*	*	855	*
VA	*	*	*	*	*	*
Other States	372	4,034	5,025	1,072	9,765	74,393
US	808	6,800	6,429	1,684	14,340	139,787
Old (Breeders)						
US	11	218	195	7	1,255	10,095

* Included in "Other States" to avoid disclosing individual operations.

¹ The sum of the individual diseases does not add across to the total for "Other States".

**Turkeys Slaughtered: Number Condemned Post-Mortem by Cause, by Type,
by State and United States, March 2003**

State	Tuber- culosis	Leukosis	Septicemia	Airsac- culitis	Synovitis	Tumors
	<i>Number of Head</i>	<i>Number of Head</i>	<i>Number of Head</i>	<i>Number of Head</i>	<i>Number of Head</i>	<i>Number of Head</i>
Young (Mature)						
AR			*	*	*	*
CA		4	*	*	*	5
IA		*	6,635	2,194	*	*
MN		*	16,667	3,103	*	26
MO			17,658	*	*	*
NC		*	*	*	*	*
OH		*	*	*	*	*
PA			*	490	11	*
VA		*	*	*	*	*
Other States	1	349	53,511	9,683	4,663	34
US	1	353	94,471	15,470	4,674	65
Old (Breeders)						
US		9	3,869	1,174	105	98
	Bruises	Cadaver	Contam- ination	Overscald	Other	Total ¹
	<i>Number of Head</i>	<i>Number of Head</i>	<i>Number of Head</i>	<i>Number of Head</i>	<i>Number of Head</i>	<i>Number of Head</i>
Young (Mature)						
AR	14	652	*	*	*	*
CA	*	*	*	*	*	*
IA	*	577	535	88	680	12,879
MN	*	645	659	*	1,465	24,254
MO	*	*	407	7	*	21,370
NC	200	*	*	59	1,313	10,026
OH	*	*	*	*	*	*
PA	*	*	*	*	*	*
VA	*	*	*	*	*	*
Other States	735	5,572	3,831	1,837	10,969	76,750
US	949	7,446	5,432	1,991	14,427	145,279
Old (Breeders)						
US	39	310	396	18	1,712	7,730

* Included in "Other States" to avoid disclosing individual operations.

¹ The sum of the individual diseases does not add across to the total for "Other States".

Poultry Slaughter Estimates

Data Sources: Primary data for poultry slaughter estimates are obtained from the Poultry Inspection Form (FSIS 6000-21). This form is completed by inspectors of the Food Safety and Inspection Service (FSIS), USDA for all Federally Inspected (FI) plants. Over 99 percent of the total U.S. slaughter for any species is under FI. The FSIS 6000-21 forms collect number of head slaughtered daily under FI by species and class as well as condemnations and total live and dressed weights. Approximately 350 plants in the U.S. are operated under Federal Inspection.

Revision Policy: Revisions are generally the result of late reports received by FSIS from plants and are usually less than one-half of 1 percent of the preliminary totals. Revisions for the previous month and year-to-date totals are published in each monthly release. Final data are published in the annual summary released in April and reflect any late reports or corrections which occurred after the monthly revision were published.

Procedures and Reliability: Plant inspectors submit forms (FSIS 6000-21) weekly summarizing the plant's activity. When inconsistencies in the data are detected, the reports are returned to the inspectors for correction. Inspectors correct or validate the report and resubmit it. The reports cover weekly activities through Saturday night and reported data are allocated to the appropriate month as it enters the database.

A NASS computer program provides a review of current data with historical data for each plant. An edit provides checks for the detection of errors such as invalid plant information, duplication, and erroneous data. Data are summarized weekly and accumulated to monthly totals for this release.

Data for major slaughter plants with missing reports are adjusted prior to publication to assure that all plants slaughtering a significant portion of a specific class are accounted for each week. Estimates for missing weeks are made only after verifying that the plant was in operation. Adjustments are based on either the previous week's information or a week determined to be similar to the one missing. Late reports replace imputed data as they become available. While there is a varying degree of incompleteness from month to month, it has only a minimal impact on the published totals.

Poultry slaughter estimates are based on a census of operating plants and, therefore, have no sampling error. However, they may be subject to errors such as omissions, duplications, and mistakes in reporting, recording, and processing the data. These errors are minimized through strict quality controls in the edit and summarization process, and a careful review of all reported data for consistency and reasonableness.

State data are published for selected states for young chickens and young turkeys. State data are not published if less than three plants operate for a species in a State, or if one plant has 60 percent or more of the total live weight for that species. Data for all states not published are included in the "Other States" category. Also included in this category are data for published states that are confidential (denoted by an *). Data for all states are included in the U.S. totals. For 2001, young chickens were killed in 31 states, young turkeys in 21 states.

Definitions

Ante-Mortem Condemnations - Birds condemned prior to their entry into the slaughter plant.

Certified Ready-to-Cook - The weight of poultry certified wholesome by inspection after post-mortem condemnation pounds are removed. Ready-to-cook represents poultry meat ready for the marketing channel.

Ducks - Includes all ducks regardless of age and weight.

Fryer-Roaster Turkeys - Young immature birds, usually under 16 weeks of age. Included with young turkeys.

Mature Chickens - Fowl from breeder and market egg flocks and stags and cocks.

New York Dressed Weight - Carcass weight after only feathers and blood are removed. This weight is approximately 90% of live weight.

Old Turkeys (Breeders) - Fully matured birds held for egg production, usually over 15 months of age.

Other Poultry - Includes all other ready-to-cook products which bear the USDA Inspected for Wholesomeness legend.

Post-Mortem Condemnations - Carcasses or parts condemned by the inspector because of disease or mishandling and removed from the slaughter line and destroyed.

Young Chickens - Commercially grown broilers-fryers and other young immature birds such as roasters and capons.

Young Turkeys (Mature) - Young birds grown to a matured market age, about 5 months.

The next "Poultry Slaughter" report will be released at 8:30 a.m. ET on June 6, 2003.

The United States Department of Agriculture (USDA) prohibits discrimination in all its programs on the basis of race, color, national origin, gender, religion, age, disability, political beliefs, sexual orientation, and marital or family status. (Not all prohibited bases apply to all programs.) Persons with disabilities who require alternative means for communication of program information (braille, large print, audiotape, etc.) should contact the USDA's TARGET Center at 202-720-2600 (voice and TDD).

To file a complaint of discrimination, write USDA, Director, Office of Civil Rights, Room 326-W, Whitten Building, 1400 Independence Avenue, SW, Washington, D.C., 20250-9410, or call 202-720-5964 (voice or TDD). USDA is an equal opportunity provider and employer.

ACCESS TO REPORTS!!

For your convenience, there are several ways to obtain NASS reports, data products, and services:

INTERNET ACCESS

All NASS reports are available free of charge on the worldwide Internet. For access, connect to the Internet and go to the NASS Home Page at: <http://www.usda.gov/nass/>. Select "Today's Reports" or Publications and then Reports Calendar or Publications and then Search, by Title or Subject.

E-MAIL SUBSCRIPTION

All NASS reports are available by subscription free of charge direct to your e-mail address. Starting with the NASS Home Page at <http://www.usda.gov/nass/>, click on **Publications**, then click on the **Subscribe by E-mail** button which takes you to the page describing e-mail delivery of reports. Finally, click on **Go to the Subscription Page** and follow the instructions.

AUTOFAX ACCESS

NASSFax service is available for some reports from your fax machine. Please call 202-720-2000, using the handset attached to your fax. Respond to the voice prompts. Document 0411 is a list of available reports.

PRINTED REPORTS OR DATA PRODUCTS

CALL OUR TOLL-FREE ORDER DESK: 800-999-6779 (U.S. and Canada)
Other areas, please call 703-605-6220 FAX: 703-605-6900
(Visa, MasterCard, check, or money order acceptable for payment.)

ASSISTANCE

For **assistance** with general agricultural statistics or further information about NASS or its products or services, contact the **Agricultural Statistics Hotline** at **800-727-9540**, 7:30 a.m. to 4:00 p.m. ET, or e-mail: nass@nass.usda.gov.
